

## MARCH 2023 QUARTERLY ACTIVITIES REPORT

### HIGHLIGHTS

- ✓ **APPOINTMENT OF HIGHLY REGARDED TORONTO MINING EXEC AS CEO AND MANAGING DIRECTOR:** Greg Romain, former CEO and President of MacDonald Mines Exploration (TSX.V:BMK), appointed 24 April 2023. He brings a broad range of leadership, commercial and technical skills to Ardiden and has a deep understanding of both mining and exploration in Canada. Greg will be based in Toronto as Ardiden's first Canadian-based director, and will drive Ardiden to deliver on its strategy (ASX 19 April 2023).
- ✓ **STRONG DRILLING PROGRESS AT ARDIDEN'S 100%-OWNED DOROTHY PROSPECT:** Drilling is consistent with our model and is on schedule with >75% of the planned 24-hole diamond drill program completed. Ten holes are currently at the laboratory with a steady stream of results expected over the June quarter. Focus remains on the broad, anomalous mineralised zones that were intercepted in secondary and tertiary parallel structures during the 2022 drill program.
- ✓ **TECHNICAL ECOLOGICAL KNOWLEDGE STUDY (TEK) UNDERWAY:** Appointment of CE Strategies (CES) to lead an initial TEK for the benefit of Slate Falls First Nation, Cat Lake First Nation and Mishkeegogamang Ojibway First Nation. The aim is to preserve and boost the knowledge base used by First Nations to enhance effective decision making for the benefit of all parties.
- ✓ **EXPLORATION AGREEMENT REACHED:** Key Exploration Agreement executed with Cat Lake First Nation during PDAC, solidifying Ardiden's commitment to a mutually beneficial relationship within the traditional territories of the Cat Lake First Nation.
- ✓ **FULLY FUNDED FOR GOLD EXPLORATION INTO 2024:** Sale of final 20% interest in the Lithium Joint Venture to joint venture partner, Green Technology Metals (ASX: GT1) late last year, sees Ardiden fully funded for exploration programs through 2024. Ardiden maintains 5.14% equity holding in GT1.
- ✓ **TENEMENT ACQUISITIONS:** Ten additional tenements were acquired during the period, all within the prospective Western Hub.
- ✓ **EARLY EXPLORATION PERMITS:** Ardiden received the final four exploration permits from the Mines Department in Thunder Bay, Ontario, Canada. The Company now has active exploration permits across its 23 prospects within the Pickle Lake Gold Project.



*Figure 1 Drilling March 2023 Dorothy Prospect, Pickle Lake Gold Project*

Ardiden Limited ('Ardiden' or 'the Company') (ASX: ADV) is pleased to report on its Quarterly Activities at its highly prospective Pickle Lake Gold Project in northwest Ontario, Canada (Figure 2).

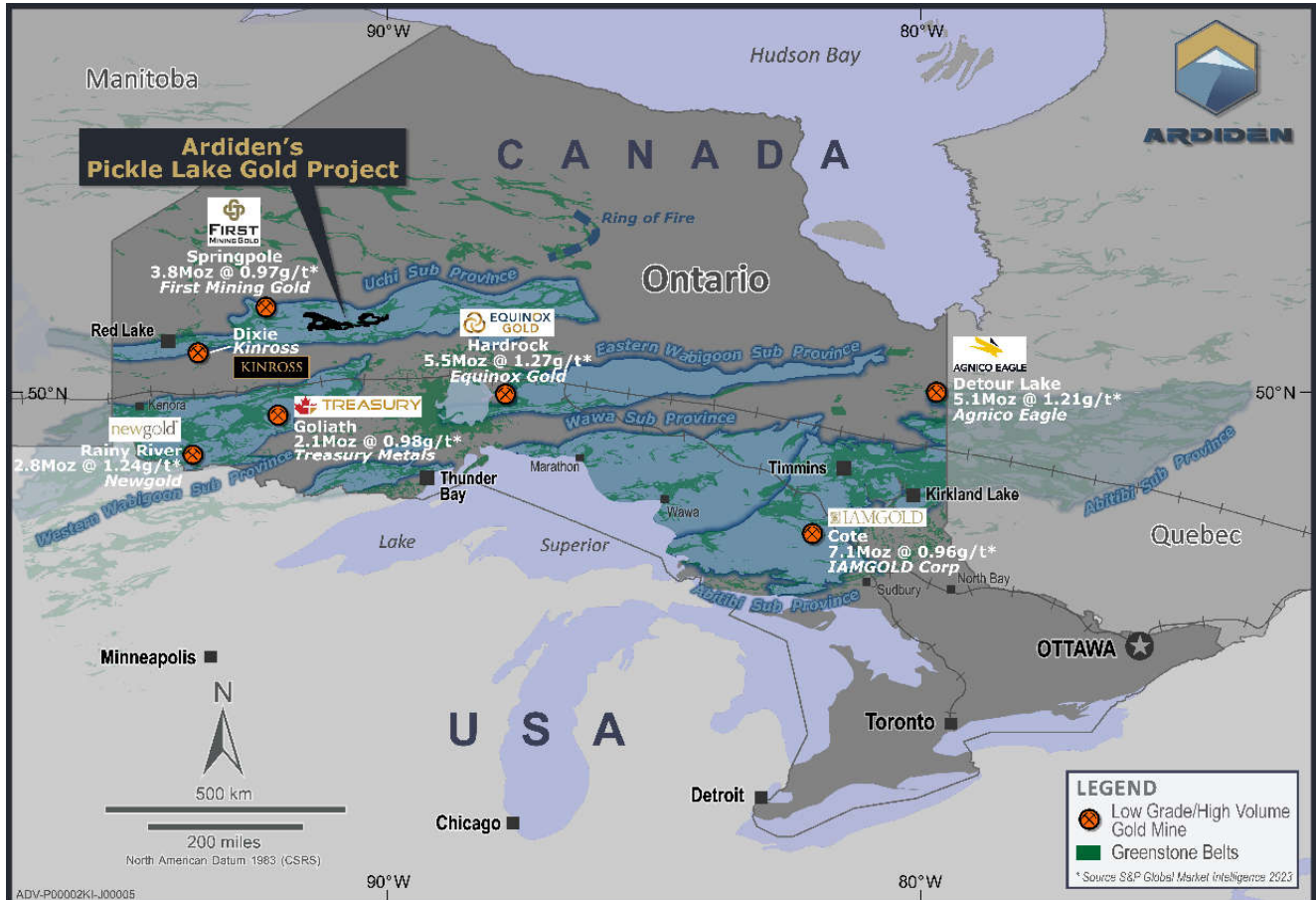


Figure 2 – Location of Ardiden's Pickle Lake Gold project within the Uchi Belt of northwest Ontario<sup>1</sup>.

### **GOLD EXPLORATION ACTIVITIES – Dorothy Prospect (Western Hub) – 100% owned Pickle Lake Gold Project**

The Pickle Lake Gold Project is a continuous District-Scale landholding, located east of Red Lake in the well-endowed Uchi Geological sub-province of north-western Ontario, Canada. The Uchi Province is host to numerous currently producing gold mines at Red Lake and at Musselwhite, and is a highly active exploration area with Evolution, Newmont, Kinross, and others all actively pursuing gold exploration work in the area.

Drilling commenced during the quarter at our 100%-owned Dorothy Prospect and is >75% complete. The program is comprised of ~24 drill holes covering 3,250m over a strike length of 2.5km to test the large mineralisation halo and semi massive to massive sulphide sequence, identified at both the Dorothy and Dobie prospects in the successful 2022 drill program (Figure 3 and Figure 4). The holes at the Dorothy prospect have been planned at 100m spacings up to 150m target depth with the aim of confirming the recently interpreted geological model. (ASX 3 March 2023)

Drilling to date confirms the geological model is consistent along the targeted strike at Dorothy with a consistent lithological package of rocks to those from the 2022 drilling. Ten holes are currently at the laboratory with a steady stream of assay results expected over the coming months.

<sup>1</sup> \* Source S&P Global Market Intelligence 2023

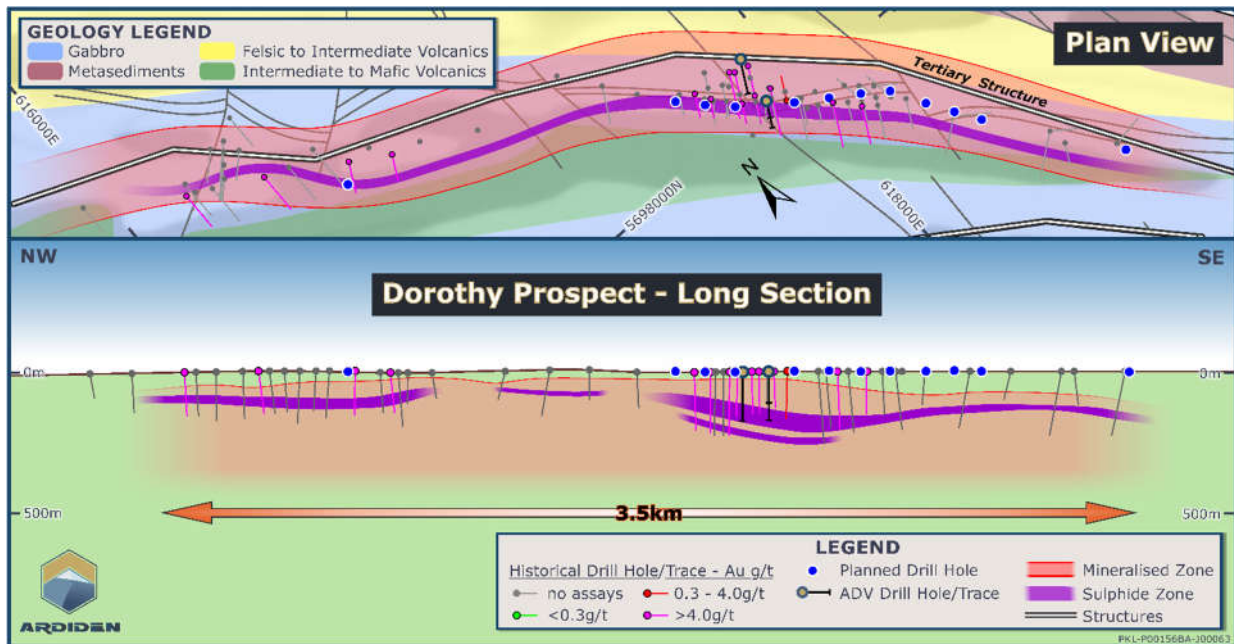


Figure 3 – Initial drill plan over the Dorothy Prospect.

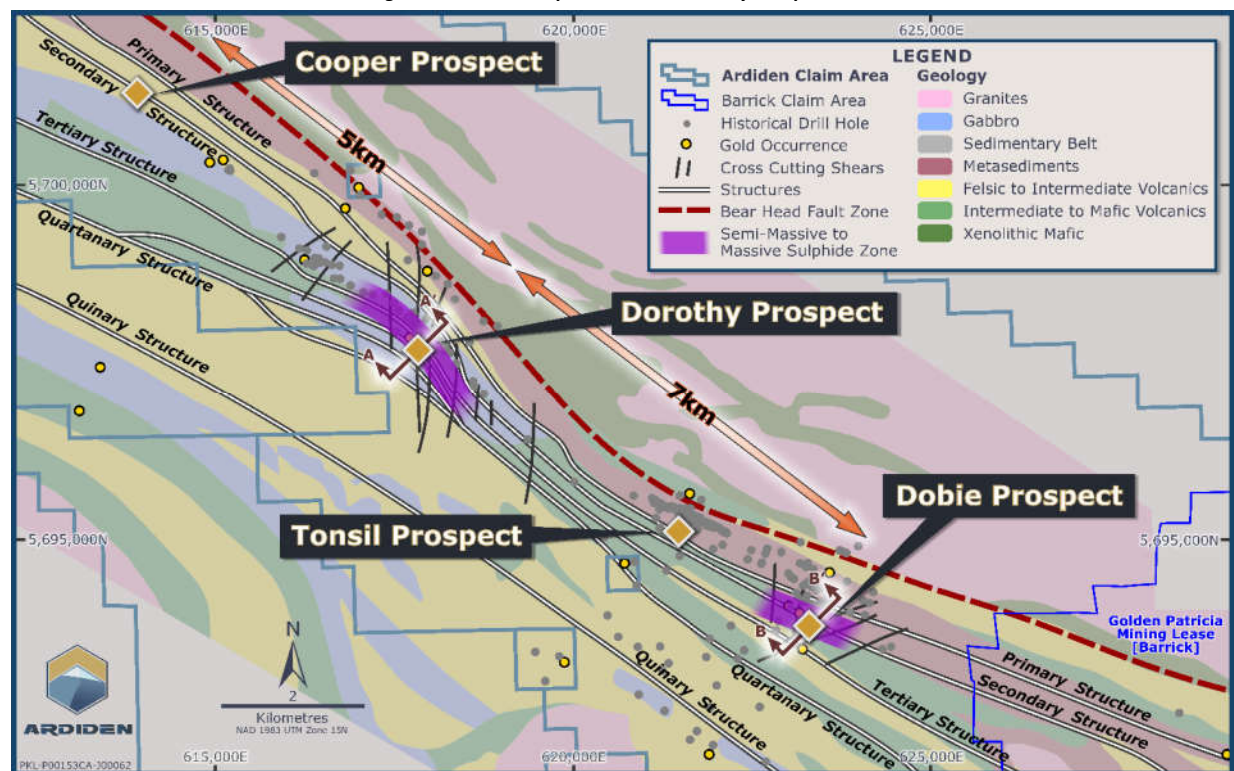


Figure 4 – Zones of semi-massive to massive sulphides at Ardiden's structurally complex Western Hub, Pickle Lake Gold Project.

Refer to ADV ASX release 18 Feb 2020, 17 Aug 2022, 15 Dec 2022, and 21 February 2023.

A 3D interpretation model of the Dorothy prospect (Figure 5 and Figure 6) represents the interpreted and modelled extent of a broad mineralisation halo (gold) with a consistent sulphide zone which displays a semi massive to massive texture in drill core (green). A video of the interpretation e modelled from the 2022 drill campaign and historical drilling can be found at [www.ardiden.com.au](http://www.ardiden.com.au). Historical drilling from the 1980's and 1990's at Dorothy support ADV's modelled continuity of the broad parallel structures to the primary structure. A detailed review of historical drill logs (combined with selective sampling) supports the view that previous owners were targeting narrow high grade, gold mineralisation. A number of the historical drill holes have either no reported assays or geological logs (grey).

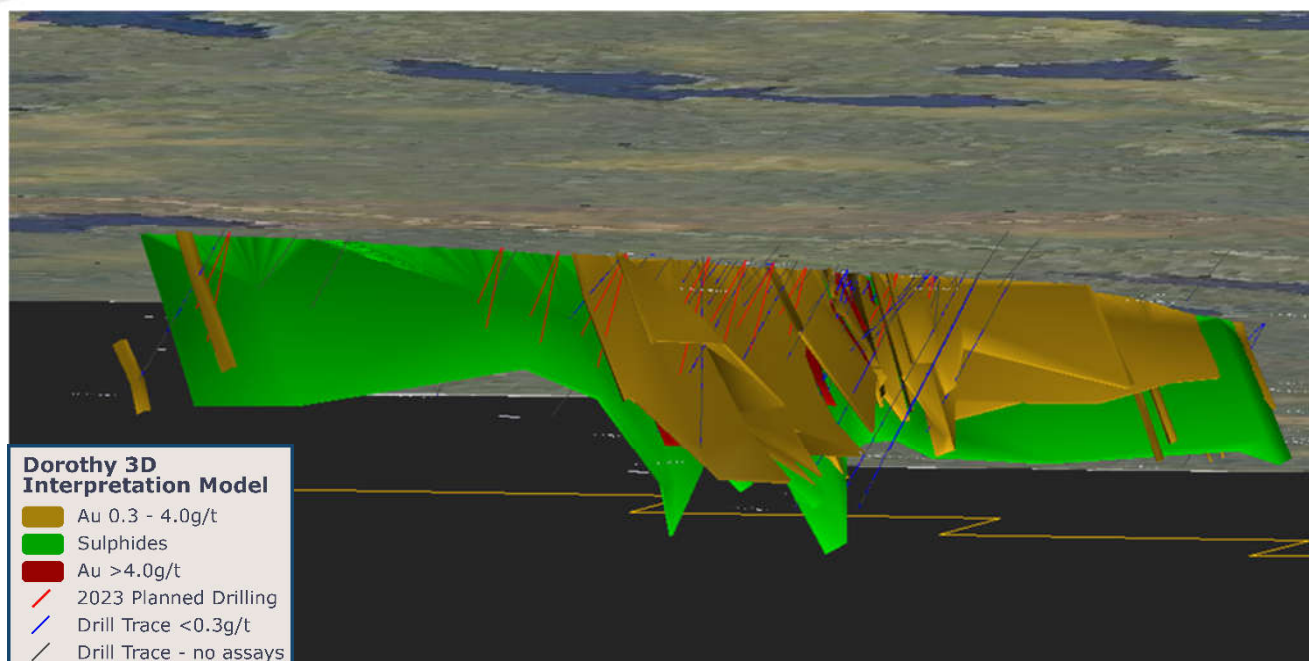


Figure 5 3D Geological Interpretations

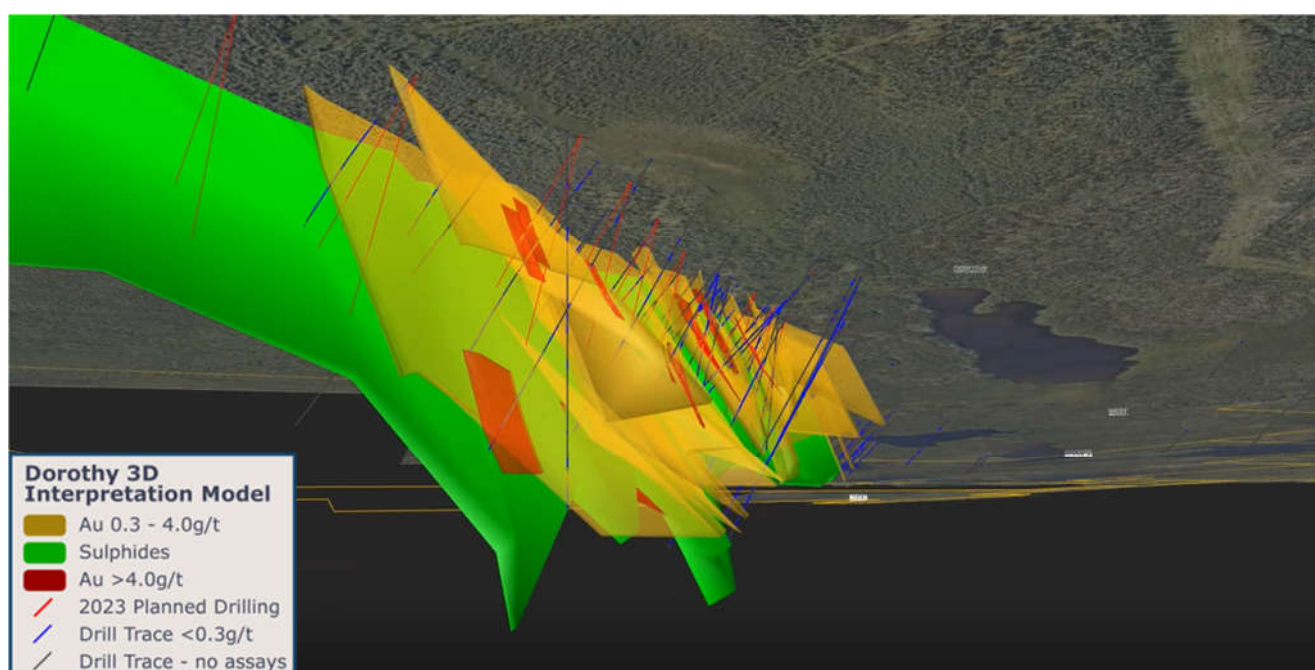


Figure 6 3D Geological interpretations

## TENEMENT ACQUISITIONS

Ten additional tenements were acquired during the period, all within the prospective Western Hub.

Ardiden is fully funded through 2024 from the sale of the final 20% of its Lithium Joint Venture to GT1 in November 2022, enabling the Company to target the broad anomalous zones across the Dorothy - Dobie Prospects.

## First Nations – ESG

### ***Technical Ecological Knowledge Study***

During the reporting period, the Company engaged CE Strategies to undertake a Technical Ecological Knowledge Study (TEK) over the Western Hub. The TEK is an important tool aimed at bolstering land and resources knowledge to facilitate positive communication and respectful consultation processes with First Nation stakeholders.

CE Strategies has been a local source of professional expertise for many communities and organisations throughout Ontario and Manitoba for over 10 years, providing services and tools that promote informed decision-making and strong, beneficial consultation practices.

### ***Exploration Agreement with Cat Lake First Nation***

A milestone Exploration Agreement with Cat Lake First Nation (Cat Lake) was also executed during the quarter. The Exploration Agreement outlines the Company's commitment to developing a positive relationship and co-existence within the Cat Lake Nation's traditional territory, home to Ardiden's 100%-owned Pickle Lake Gold Project. The Exploration Agreement was executed at the Prospector & Developers Association of Canada (PDAC) in Toronto, Canada and comes off the back of our first post-COVID visit to the Cat Lake settlement in late November 2022.



**Figure 7 – Chief Russell Wesley, Cat Lake First Nation and Haydn Daxter, Ardiden Exploration Manager PDAC March 2023**



**Figure 8 – Mobilised drill rig equipment and supplies**

## Permitting

The Company received the final four early exploration permits for its Pickle Lake Gold Project with the following 4 permits awarded by the Mines Department in Thunder Bay, Ontario, Canada during the quarter:

Permit #	Prospect	FN Communities
<b>PR-22-000310</b>	<i>Kasagiminnis North</i>	<i>Cat Lake - Mishkeegogamang - Slate Falls</i>
<b>PR-22-000311</b>	<i>Fry McVean</i>	<i>Cat Lake - Mishkeegogamang - Slate Falls</i>
<b>PR-22-000312</b>	<i>Relyea</i>	<i>Cat Lake - Mishkeegogamang - Slate Falls</i>
<b>PR-22-000334</b>	<i>Nabemakoseka</i>	<i>Cat Lake - Mishkeegogamang - Slate Falls</i>

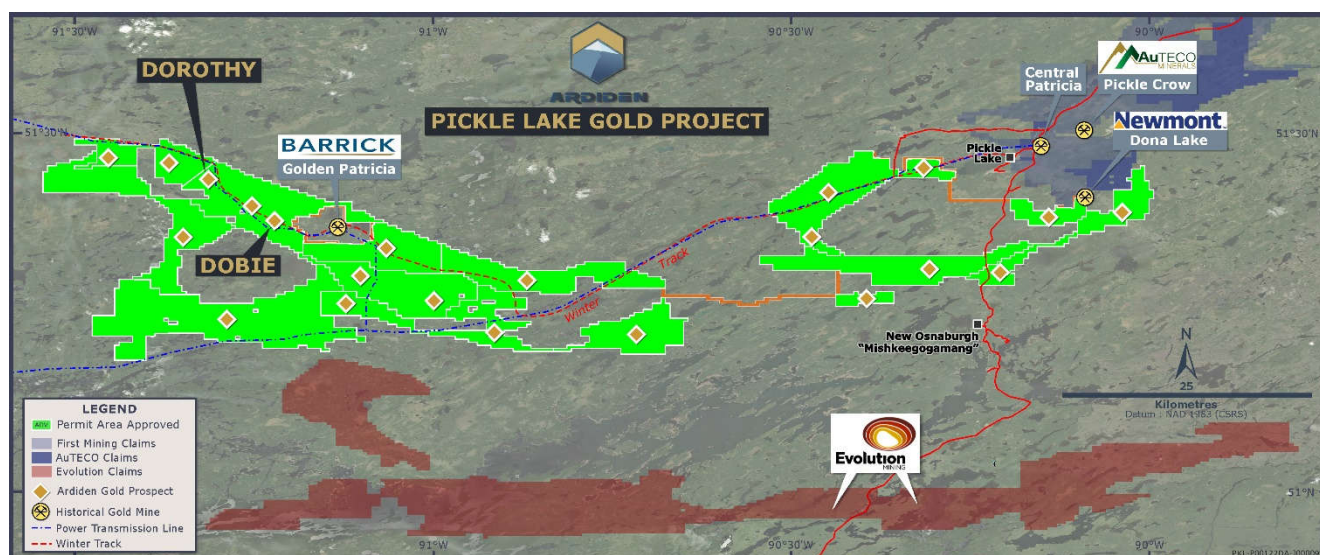


Figure 9 – Status of Permitting at the District-Scale Pickle Lake Gold project-

## CORPORATE

### Appointment of Chief Executive Officer and Managing Director

Earlier this month, Ardiden announced the appointment of experienced mining executive, Mr Gregory Romain, to the role of Chief Executive Officer and Managing Director, effective 24 April 2023. Mr Romain is based in Toronto, Ontario, which provides him efficient and timely access to oversee Ardiden’s 100%-owned Pickle Lake Gold Project.

Mr Romain is a highly regarded senior executive with greater than 30 years’ experience, most recently as CEO and President of MacDonald Mines Exploration Limited (TSX.V: BMK). Prior to this he was President & CEO of Gowest Gold Ltd (TSX.V: GWA) where he advanced its flagship Bradshaw gold project, located in Timmins Ontario, from a pure exploration play to a fully permitted 1,500 tonnes per day (TPD) underground development. He brings a broad range of leadership, commercial and technical skills to Ardiden and has a deep understanding of both mining and exploration in Canada.

This appointment sees the Company well positioned to continue to advance the Pickle Lake Project.



### **Financial Position**

The Company had a strong cash balance at 31 March 2023 of **A\$7.26 million**. A further A\$8 million received from the sale of the final 20% of the Lithium Joint Venture to Green Technologies Limited (ASX:GT1) in November 2022 remains in trust, subject to Canadian withholding tax. Ardiden expects the residual A\$8M to be remitted back to the Company following receipt of a tax clearance certificate from Canada Revenue in the second half of the year.

Ardiden continues to retain 5.14% equity holding of GT1, escrowed until November 2023. The current value of the holding is ~\$8.6M<sup>2</sup>.

Cash outflows for the quarter totalled A\$1.10m which substantially consisted of exploration activity and related capital of \$619k, staff costs \$144k, and corporate administration of \$339k.

Payments to related parties and their associates totalled \$70k (consisting of Non-executive Directors fees including salaries, and superannuation payments).

The detail of the cash receipts and payments is set out in Appendix 5B.

This information is authorised for ASX release by the Board.

ENDS

For further information:

**Investors:**

Bruce McFadzean  
Non-Executive Chairman  
Tel: +61 8 6184 5938  
[info@ardiden.com.au](mailto:info@ardiden.com.au)

Tara Robson  
Company Secretary  
Tel +61 8 6184 5938

For more information including modelling parameters and details, the ASX announcements pertaining to Exploration Results and Mineral Resources are available from the Company's website: [www.ardiden.com.au](http://www.ardiden.com.au)

### **Competent Person's Statement**

The Company confirms that it is not aware of any other new information or data that materially affects the information included in the original market announcements referred to above, and in the case of estimates of mineral resources, that all material assumptions and technical parameters underpinning the estimates in the relevant market announcement continue to apply and have not materially changed. The Company confirms that the form and context in which the Competent Person's findings are presented have not been materially modified from the original market announcements.

### **Forward Looking Statement**

This announcement may contain some references to forecasts, estimates, assumptions and other forward-looking statements. Although the company believes that its expectations, estimates and forecast outcomes are based on reasonable assumptions, it can give no assurance that they will be achieved. They may be affected by a variety of variables and changes in underlying assumptions that are subject to risk factors associated with the

---

<sup>2</sup> As at closing price (\$0.66) of GT1 on 19 April 2023.



nature of the business, which could cause actual results to differ materially from those expressed herein. All references to dollars (\$) and cents in this presentation are to Australian currency, unless otherwise stated. Investors should make and rely upon their own enquires and assessments before deciding to acquire or deal in the Company's securities.

#### **About Ardiden**

*Ardiden is focused on systematic gold exploration at its 100%- Owned Pickle Lake Gold Project in the well-endowed Uchi Geological Subprovince of north-west Ontario, Canada. The Company's District-Scale Gold Project is the largest continuous gold land holding in the Uchi Belt, where Barrick, Newmont, Kinross, and Evolution all hold significant gold mine and exploration assets. Ardiden's strategic landholding is situated on the same geological belt as Red Lake, the 'Uchi' Subprovince, which has produced over 30M oz of gold to date and where new Tier-1 gold discoveries are still being made, such as Kinross Gold Corporation's (NYSE:KGC)'s Great Bear Project, which reported a maiden resource of 5MOZ Au on 13 February 2023.*

*In addition to its Pickle Lake Gold Project, Ardiden has retained ~13 million shares in Green Technology Metals (ASX:GT1) which it acquired as part proceeds from the sale of Ardiden's lithium assets.*



## QUARTERLY TENEMENT SUMMARY

All of the Companies tenements are granted and located in Ontario, Canada.

- The mining tenements held at the end of the quarter and their location.

Gold Projects	Tenement Number/Claim ID	Beneficial Percentage Interest
Pickle Lake - Connections	536230, 536231, 536232, 536233, 536234, 536235, 536236, 536237, 536238, 536239, 536240, 536241, 536242, 536243, 536244, 536245, 536246, 536247, 536248, 536249, 541336, 541337, 541341, 541344, 541345, 541346, 541350, 541355, 541358, 541359, 541360, 541361, 541366, 541367, 541368, 541369, 541370, 541371, 541372, 541373, 541374, 541375, 541376, 541377, 541378, 541379, 541380, 541381, 541382, 541383, 541384, 541385, 541386, 541387, 541388, 541389, 541390, 541391, 541392, 541393, 541393, 541394, 541395, 541396, 541397, 541398, 541399, 541400, 541401, 566571, 566572, 566573, 566574, 566575, 566576, 566577, 566578, 566579, 566580, 566581, 566582, 566583, 566584, 566585, 566586, 566587, 566588, 566589, 566590, 566591, 566592, 566593, 566594, 566595, 566596, 566597, 566598, 566599, 566600, 566601, 566602, 566603, 566604, 566605, 566606, 566607, 566608, 566609, 566610, 566611, 566612, 566613, 566614, 566615, 566616, 566617.	100%
Pickle Lake – Dempster Lake	579770, 579771, 579772, 579773, 579774, 579997, 579998, 580004, 580005, 580006, 580007, 580008, 580009, 580010, 580015, 580016, 580017, 580018, 580019, 580020, 580021, 580022, 580023, 580024, 580025, 580026, 580027, 580028, 580029, 580030, 580031, 580032, 580033, 580034, 580035, 580036, 580037, 580038, 580039, 580040, 580041, 580042, 580043, 580044, 580045, 580046, 580047, 580048, 580049, 580050, 580051, 580052, 580053, 580054, 580055, 580056, 580057, 580058, 580059, 580060, 580061, 580062, 580063, 580064, 580065, 580066, 580067, 580068, 580069, 580070, 580071, 580072, 580073, 580074, 580075, 580076, 580077, 580078, 580079, 580080, 580081, 580082, 580083, 580084, 580085, 580086, 580087, 580088, 580089, 580090, 580091, 580092, 580093, 580094, 580095, 580096, 580097, 580098, 580099, 580100, 580101, 580102, 580103, 580104, 580105, 580106, 580107, 580108, 580109, 580110, 580111, 580112, 580113, 580114, 580115, 580116, 580117, 580118, 580119, 580120, 580121, 580122, 580123, 580124, 580125, 580126, 580127, 580128, 580129, 580130, 580131, 580132, 580133, 580134, 580135, 580136, 580137, 580138, 580139, 580140, 580141, 580142, 580151, 580152, 580153, 580154, 580155, 580156, 580189, 580190, 580295, 580296, 580297, 580298, 580299, 580300, 580301, 580302, 580303, 580304, 580305, 580306, 580307, 580308, 580309, 580310, 580311, 580312, 580313, 580314, 580315, 580316, 580317, 580318, 580319, 580320, 580321, 580322, 580323, 580324, 580325, 580326, 580327, 580328, 580329, 580330, 580331, 580332, 580333, 580334, 580335, 580336, 580337, 580338, 580339, 580340, 580341, 580342, 580343, 580344, 695376, 704865, 704866, 704867, 704868, 704869, 704870, 704871, 704872, 704873, 704874, 704875, 704876, 704877, 704878, 704879, 704880, 704881, 704882, 704883, 704884, 704884, 704885, 704886, 704887, 704888, 704889, 704890, 704891, 704893.	100%
Pickle Lake – Dorothy Dobie	104984, 105912, 106176, 106277, 106701, 108546, 108547, 110665, 112086, 112889, 112990, 123364, 124723, 128625, 129964, 130012, 130849, 130944, 130945, 131221, 133040, 133429, 134232, 134448, 134753, 135762, 136226, 140102, 140103, 140104, 141205, 143008, 143009, 145694, 146037, 146857,	100%

Gold Projects	Tenement Number/Claim ID	Beneficial Percentage Interest
	146858, 147714, 149493, 149494, 150199, 150524, 150822, 150823, 154016, 154661, 155274, 156088, 157127, 159811, 161295, 161344, 161961, 162581, 162582, 163914, 163956, 166547, 166548, 168691, 169333, 169948, 176602, 176661, 176770, 176793, 176991, 178279, 178630, 178776, 181433, 181634, 183363, 183657, 183658, 183659, 183660, 183661, 183802, 186059, 186838, 186839, 186840, 187792, 187793, 192633, 193812, 195459, 195771, 196502, 200893, 201767, 205183, 205184, 205185, 207317, 207318, 208735, 208736, 209087, 212985, 213019, 213020, 214000, 214531, 215430, 215446, 215505, 217414, 221873, 223180, 223229, 225203, 231209, 231210, 231211, 233344, 234028, 234647, 235998, 236504, 236505, 236506, 236858, 237737, 237738, 242025, 242026, 242027, 242865, 242885, 245369, 246370, 246778, 248523, 250184, 250376, 250377, 250729, 250918, 250919, 250920, 251226, 251227, 252855, 253832, 253833, 253834, 254138, 254139, 254140, 255485, 255486, 257815, 257816, 261457, 261968, 262541, 265913, 265914, 269312, 269419, 272648, 273934, 273935, 274481, 277187, 279407, 279431, 279432, 282045, 282178, 282650, 284007, 287953, 287954, 289318, 290701, 292076, 292077, 292078, 297909, 297946, 298040, 299720, 299721, 300389, 301466, 302098, 302509, 302510, 303780, 308300, 308702, 308703, 308704, 310059, 310268, 310973, 311804, 316960, 316961, 316984, 316985, 317711, 319530, 319856, 322018, 323277, 323278, 323279, 329251, 329351, 332358, 333405, 334448, 336319, 336320, 337656, 337657, 337827, 337828, 338360, 340200, 340994, 342957, 343786, 343787, 343788, 566618, 566619, 566620, 566621, 566622, 566623, 566624, 566625, 566626, 566627, 566628, 566629, 566630, 566631, 566632, 566633, 566634, 566635, 566636, 566637, 566638, 566639, 566640, 566641, 566642, 566643, 566644, 566645, 566646, 566647, 566648, 566649, 566650, 566651, 566652, 566653, 566654, 566655, 566656, 566657, 566658, 566659, 566660, 566661, 566662, 566663, 566664, 566935, 566936, 566937, 566938, 566939, 566940, 566941, 566942, 566943, 566944, 566945, 566946, 566947, 566948, 566949, 566950, 566951, 566952, 566953, 566954, 566955, 566956, 566957, 566958, 566959, 566960, 566961, 566962, 566963, 566964, 566965, 566966, 566967, 566968, 566969, 566970, 566971, 566972, 566973, 566974, 566975, 566976, 566977, 566978, 566979, 566980, 566981, 566982, 566983, 566984, 695378.	
Pickle Lake – Dorothy Dobie North	613951, 613952, 613953, 613954, 613955, 613956, 613957, 613958, 613959, 613960, 613961, 613962, 613963, 613964, 613965, 613966, 613967, 613968, 613969, 613970, 613971, 613972, 613973, 613974, 613975, 613976, 613977, 613978, 613979, 613980, 613981, 613982, 613983, 613984, 613985, 613986, 613987, 613988, 613989, 613990, 613991, 613992, 613993, 613994, 613995, 613996, 613997, 613998, 613999, 614000, 614001, 614002, 614003, 614004, 614005, 614006, 614007, 614008, 614009, 614010, 614011, 614012, 614013, 614014, 614015, 614016, 614017, 614018, 614019, 614020, 614021, 614022, 614023, 614024, 614025, 614026, 614027, 614028, 614029, 614030, 614031, 614032, 614033, 614034, 614035, 614036, 614037, 614038, 614039, 614040, 614041, 614042, 614043, 614044, 614045, 614046, 614047, 614048, 614049, 614050, 614051, 614052, 614053, 614054, 614055, 614056, 614057, 614058, 614059, 614060, 614061, 614062, 614063, 614064, 614065, 614066, 614067, 614068, 614069, 614070, 614071, 614072, 614073, 614074, 614075, 614076, 614077, 614078, 614079, 614080, 614081, 614082, 614083, 614084, 614085,	100%

Gold Projects	Tenement Number/Claim ID	Beneficial Percentage Interest
	614086, 614087, 614088, 614089, 614090, 614091, 614092, 614093, 614094, 614095, 614096, 614097, 614098, 614099, 614100, 614101, 614102, 614103, 614104, 614105, 614106, 614107, 614108, 614109, 614110, 614111, 614112, 614113, 614114, 614115, 614116, 614117, 614118, 614119, 614120, 614121, 614122, 614123, 614124, 614125, 614126, 614127, 614128, 614129, 614130, 614131, 614132, 614133, 614134, 614135, 614136, 614137, 614138, 614139, 614140, 614141, 614142, 614143, 614144, 614145, 614146, 614147, 614148, 614149, 614150, 614151, 614152, 614153, 614154, 614155, 614156, 614157, 614158, 614159, 614160, 614161, 614162, 614163, 614164, 614165, 614166, 614167, 614168, 614169, 614170, 614171, 614172, 614173, 614174, 614175, 614176, 614177, 614178, 614179, 614180, 614181, 614182, 614183, 614184, 614185, 614186, 614187, 614188, 614189, 614190, 614191, 614192, 614193, 614194, 614195, 614196, 614197, 614198, 614199, 614200, 614201, 614202, 614203, 614204, 614205, 614206, 614207, 614208, 614209, 614210, 614211, 614212, 614213, 614214, 614215, 614216, 614217, 614218, 614219, 614220, 614221, 614222, 614223, 614224, 614225, 614226, 614227, 614228, 614229, 614230, 614231, 614232, 695374.	
Pickle Lake – Duffell Lake	579696, 579697, 579698, 579699, 579700, 579701, 579702, 579703, 579704, 579705, 579706, 579707, 579708, 579709, 579710, 579711, 579712, 579713, 579714, 579715, 579716, 579717, 579718, 579719, 579720, 579721, 579722, 579723, 579724, 579725, 579726, 579727, 579728, 579729, 579730, 579731, 579732, 579733, 579734, 579735, 579736, 579737, 579738, 579739, 579740, 579741, 579742, 579743, 579744, 579745, 579746, 579747, 579748, 579749, 579750, 579751, 579752, 579753, 579754, 579755, 579756, 579757, 579758, 579759, 579760, 579761, 579762, 579763, 579764, 579765, 579766, 579767, 579768, 579769, 579993, 579994, 579995, 579996, 579999, 580000, 580001, 580002, 580003, 580011, 580012, 580013, 580014, 695351, 695352.	100%
Pickle Lake – Fry-McVean	581408, 581409, 581410, 581411, 581412, 581413, 581414, 581415, 581416, 581417, 581418, 581419, 581420, 581421, 581422, 581423, 581424, 581425, 581426, 581427, 581428, 581429, 581430, 581431, 581432, 581433, 581434, 581435, 581436, 581437, 581438, 581439, 581440, 581441, 581442, 581443, 581444, 581445, 581446, 581447, 581448, 581449, 581450, 581451, 581452, 581453, 581454, 581455, 581456, 581457, 581458, 581459, 581460, 581461, 581462, 581463, 581464, 581465, 581466, 581467, 581468, 581469, 581470, 581471, 581472, 581473, 581474, 581475, 581476, 581477, 581478, 581479, 581480, 581481, 581482, 581483, 581484, 581485, 581486, 581487, 581488, 581489, 581490, 581491, 581492, 581493, 581494, 581495, 581496, 581497, 581498, 581499, 581500, 581501, 581502, 581503, 581504, 581505, 581506, 581507, 581508, 581509, 581510, 581511, 581512, 581513, 581514, 581515, 581516, 581517, 581518, 581519, 581520, 581521, 581522, 581523, 581524, 581525, 581526, 581527, 581528, 581529, 581530, 581531, 581532, 581533, 581534, 581535, 581536, 581537, 581538, 581539, 581540, 581541, 581542, 581543, 581544, 581545, 581546, 581547, 581548, 581549, 581550, 581551, 581552, 581553, 581554, 581555, 581556, 581557, 581558, 581559, 581560, 581561, 581562, 581563, 581564, 581565, 581566, 581567, 581568, 581569, 581570, 581571, 581572, 581573, 581574, 581575, 581576, 581577, 581578, 581579, 581580, 581581, 581582, 581583, 581584, 581585, 581586, 581587, 581588, 581589, 581590, 581591, 581592, 581593, 581594, 581595, 581596.	100%

Gold Projects	Tenement Number/Claim ID	Beneficial Percentage Interest
	581597, 581598, 581599, 581600, 581601, 581602, 581603, 581604, 581605, 581606, 581607, 581608, 581609, 581610, 581611, 581612, 581613, 581614, 581615, 581616, 581617, 581618, 581619, 581620, 581621, 581622, 581623, 581624, 581625, 581626, 581627, 581628, 581629, 581630, 581631, 581632, 581633, 581634, 581635, 581636, 581637, 581638, 581639, 581640, 581641, 581642, 581643, 581644, 581645, 581646, 581647, 581648, 581649, 581650, 581651, 581652, 581653, 581654, 581655, 581656, 581657, 581658, 581659, 581660, 581661, 581662, 581663, 581664, 581665, 581666, 581667, 581668, 581669, 581670, 581671, 581672, 581673, 581674, 581675, 581676, 581677, 581678, 581679, 581680, 581681, 581682, 581683, 581684, 581685, 581686, 581687, 581688, 581689, 581690, 581691, 581692, 581693, 581694, 581695, 581696, 581697, 581698, 581699, 581700, 581701, 581702, 581703, 581704, 581705, 581706, 581707, 581726, 581727, 581728, 581729, 581730, 581731, 581732, 581733, 581734, 581735, 581736, 581737, 581738, 581739, 581740, 581741, 581742, 581743, 581744, 581745, 581746, 581747, 581748, 581749, 581750, 581751, 581752, 581753, 581754, 581755, 581756, 581757, 581758, 581759, 581760, 581761, 581762, 581763, 581764, 581765, 581766, 581767, 581768, 581769, 581770, 581771, 581772, 581773, 581774, 581775, 581779, 581780, 581781, 581782, 581783, 581784, 581785, 581786, 581787, 581788, 581789, 581790, 581791, 581792, 581793, 581794, 581795, 581796, 581797, 581798, 581799, 581800, 581801, 581802, 581803, 581804, 581805, 581806, 581807, 581808, 581809, 581810, 581811, 581812, 581813, 581814, 581815, 581816, 581817, 581818, 581819, 581820, 581821, 581822, 581823, 581824, 581825, 581826, 581827, 581828, 581830, 581831, 581832, 581833, 581834, 581835, 581836, 581837, 581838, 581839, 581840, 581841, 581842, 581843, 581844, 581845, 581846, 581847, 581848, 581849, 581850, 581851, 581852, 581853, 581854, 581855, 581856, 581857, 581858, 581859, 581860, 581861, 581862, 581863, 581864, 581865, 581866, 581867, 581868, 581869, 581870, 581871, 581872, 581873, 581874, 581875, 581876, 581877, 581878, 581879, 581880, 581881, 581882, 581883, 581884, 581885, 581886, 581887, 581888, 581889, 581890, 581891, 581892, 581893, 581894, 581895, 581896, 581897, 581898, 581899, 581900, 581901, 581902, 581903, 581904, 581905, 581906, 581907, 581908, 581909, 581910, 581911, 581912, 581913, 581914, 581915, 581916, 581917, 581918, 581919, 581920, 581921, 581922, 581923, 581924, 581925, 581926, 581927, 581928, 581929, 581930, 581931, 581932, 581933, 581934, 581935, 581936, 581937, 581938, 581939, 581940, 581941, 581942, 581943, 581944, 581945, 581946, 581947, 581948, 581949, 581950, 581951, 581952, 581953, 581954, 581955, 581956, 581957, 581958, 581959, 581960, 581961, 581962, 581963, 581964, 581965, 581966, 581967, 581968, 581969, 581970, 581971, 581972, 581973, 581974, 581975, 581976, 581977, 581978, 581979, 581981, 581982, 581983, 581984, 581985, 581986, 581987, 581988, 581989, 581990, 581991, 581992, 581993, 581994, 581995, 581996, 581997, 581998, 581999, 582000, 582001, 582002, 582003, 582004, 582005, 582006, 582007, 582008, 582009, 582010, 582011, 582012, 582013, 582014, 582015, 582016, 582017, 582018, 582019, 582020, 582021, 582022, 582023, 582024, 582025, 582026, 582027, 582028, 582029, 582030, 582031, 582032, 582033, 582034, 582035, 582036, 582037, 582038, 582039, 582040, 582041, 582042, 582043, 582044, 582045, 582046, 582047, 582048, 582049, 582050, 582051,	

Gold Projects	Tenement Number/Claim ID	Beneficial Percentage Interest
	582052, 582053, 582054, 582055, 582056, 582057, 582058, 582059, 582060, 582061, 582062, 582063, 582064, 582065, 582066, 582067, 582068, 582069, 582070, 582071, 582072, 582073, 582074, 582075, 582076, 582077, 582078, 582079, 582080, 582081, 582082, 582083, 582084, 582085, 582086, 582087, 582088, 582089, 582090, 582091, 582092, 582093, 582094, 582095, 582096, 582097, 582098, 582099, 582100, 582101, 582102, 582103, 582104, 582105, 582106, 582107, 582108, 582109, 582110, 582111, 582112, 582113, 582114, 582115, 582116, 582117, 582118, 582119, 582120, 582121, 582122, 582123, 582124, 582125, 582126, 582127, 582128, 582129, 582130, 582131, 582132, 582133, 582134, 582135, 582136, 582137, 582138, 582139, 582140, 582141, 582142, 582143, 582144, 582145, 582146, 582147, 582148, 582149, 582150, 582151, 582152, 582153, 582154, 582155, 582156, 582157, 582158, 582159, 582160, 582161, 582162, 582163, 582164, 582165, 582166, 582167, 582168, 582169, 582170, 582171, 582172, 582173, 582174, 582175, 582176, 582177, 582178, 582179, 582180, 582181, 582182, 582183, 582184, 582185, 582186, 582187, 582188, 582189, 582190, 582191, 582192, 582193, 582194, 582195, 582196, 582197, 582198, 582199, 582200, 582201, 582202, 582203, 582204, 582205, 582206, 582207, 582208, 582209, 582210, 582211, 582212, 582213, 582214, 582215, 582216, 582217, 582218, 582219, 582220, 582221, 582222, 582223, 582224, 582225, 582226, 582227, 582228, 582229, 582230, 582231, 582232, 672256, 695231, 695232, 695233, 695234, 695235, 695236, 695237, 695238, 695239, 695240, 695241, 695242, 695243, 695244, 695245, 695246, 695247, 695248, 695249, 695250, 695251, 695252, 695253, 695254, 695255, 695256, 695257, 695258, 695259, 695260, 695261, 695262, 695263, 695264, 695265, 695266, 695267, 695268, 695269, 695270, 695271, 695272, 695273, 695274, 695275, 695276, 695277, 695278, 695279, 695280, 695281, 695282, 695283, 695284, 695285, 695286, 695287, 695288, 695289, 695290, 695291, 695292, 695293, 695294, 695295, 695296, 695297, 695298, 695299, 695300, 695301, 695302, 695303, 695304, 695305, 695306, 695307, 695308, 695309, 695310, 695311, 695312, 695313, 695314, 695315, 695316, 695317, 695318, 695319, 695320, 695321, 695322, 695323, 695324, 695325, 695358, 695367, 695372, 723858, 723859, 723860, 723861, 723862, 723863, 723864.	
Pickle Lake – Jean Lake	574692, 574693, 574694, 574695, 574696, 574697, 574698, 574699, 574700, 574701, 574702, 574703, 574704, 574705, 574706, 574707, 574708, 574709, 574710, 574711, 574712, 574713, 574714, 574715, 574716, 574717, 574718, 574719, 574720, 574721, 574730, 574734, 574735, 574736, 574737, 574738, 574739, 574740, 574741, 574792, 574793, 574794, 574795, 574796, 574797, 574798, 574799, 574800, 574801, 574802, 574803, 574804, 574805, 574806, 574807, 574808, 574809, 574810, 574811, 574812, 574813, 574814, 574815, 574816, 574817, 574818, 574819, 574820, 574821, 574822, 574823, 574824, 574825, 574826, 574827, 574828, 574829, 574830, 574831, 574832, 574833, 574834, 574835, 574836, 574837, 574838, 574839, 574840, 574841, 574864, 574865, 574866, 574867, 574868, 574869, 574870.	100%
Pickle Lake – Kasagiminnis	107775, 110169, 122181, 122182, 122183, 122898, 122899, 124715, 124717, 133631, 136219, 136220, 136221, 141049, 142242, 181427, 186270, 187592, 188198, 198429, 198430, 199793, 200883, 236849, 254414, 265109, 266397,	100%

Gold Projects	Tenement Number/Claim ID	Beneficial Percentage Interest
	281542, 282778, 289590, 290904, 290905, 301653, 310309, 310310, 310311, 310962, 319583, 340456, 341762, 341763, 713441, 713443, 803062, 809113.	
Pickle Lake – Kasagiminnis North	614233, 614234, 614235, 614236, 614237, 614238, 614239, 614240, 614241, 614242, 614243, 614244, 614245, 614246, 614247, 614248, 614249, 614250, 614251, 614252, 614253, 614254, 614255, 614256, 614257, 614258, 614259, 614260, 614261, 614262, 614263, 614264, 614265, 614266, 614267, 614268, 614269, 614270, 614271, 614272, 614273, 614274, 614275, 614276, 614277, 614278, 614279, 614280, 614281, 614282, 614283, 614284, 614285, 614286, 614287, 614288, 614289, 614290, 614291, 614292, 614293, 614294, 614295, 614296, 614297, 614298, 614299, 614300, 614301, 614302, 614303, 614304, 614305, 614306, 614307, 614308, 614309, 614310, 614311, 614312, 614313, 614314, 614315, 614316, 614317, 614318, 614319, 614320, 614321, 614322, 614323, 614324, 614325, 614326, 614327, 614328, 614329, 614330, 614331, 614332, 614333, 614334, 614335, 614336, 614337, 614338, 614339, 614340, 614341, 614342, 614343, 614344, 614345, 614346, 614347, 614348, 614349, 614350, 614351, 614352, 614353, 614354, 614355, 614356, 614357, 614358, 614359, 614360, 614361, 614362, 614363, 614364, 614365, 614366, 614367, 614368, 614369, 614370, 614371, 614372, 614373, 614374, 614375, 614376, 614377, 614378, 614379, 614380, 614381, 614382, 614383, 614384, 614385, 614386, 614387, 614388, 614389, 614390, 614391, 614392, 614393, 614394, 614395, 614396, 614397, 614398, 614399, 614400, 614401, 614402, 614403, 614404, 614405, 614406, 614407, 614408, 614409, 614410, 614411, 614412, 614413, 614414, 614415, 614416, 614417, 614418, 614419, 614420, 614421, 614422, 614423, 614424, 614425, 614426, 614427, 614428, 614429, 614430, 614431, 614432, 614433, 614434, 614435, 614436, 614437, 614438, 614439, 614440, 614441, 614442, 614443, 614444, 614445, 614446, 614447, 614448, 614449, 614450, 614451, 614452, 614453, 614454, 614455, 614456, 614457, 614458, 614459, 614460, 614461, 614462, 614463, 614464, 614465, 614466, 614467, 614468, 614469, 614470, 614471, 614472, 614473, 614474, 614475, 614476, 614477, 614478, 614479, 614480, 614481, 614482, 614483, 614484, 614485, 614486, 614487, 614488, 614489, 614490, 614491, 614492, 614493, 614494, 614495, 614496, 614497, 614498, 614499, 614500, 614501, 614502, 614503, 614504, 614505, 614506, 614507, 614508, 614509, 614510, 614511, 614512, 614513, 614514, 614515, 614516, 614517, 614518, 614519, 614520, 614521, 614522, 614523, 614524, 614525, 614526, 614527, 614528, 614529, 614530, 614531, 614532, 614533, 614534, 614535, 614536, 614537, 614538, 614539, 614540, 614541, 614542, 614543, 614544, 614545, 614546, 614547, 614548, 614549, 614550, 614551, 614552, 614553, 614554, 614555, 614556, 614557, 614558, 614559, 614560, 614561, 614562, 614563, 614564, 614565, 614566, 614567, 614568, 614569, 614570, 614571, 614572, 614573, 614574, 614575, 614576, 614577, 614578, 614579, 614580, 614581, 614582, 614583, 614584, 614585, 614586, 614587, 614588, 614589, 614590, 614591, 614592, 614593, 614594, 614595, 614596, 614597, 614598, 614599, 614600, 614601, 614602, 614603, 614604, 614605, 614606, 614607, 614608, 614609, 614610, 742484, 742485, 742486, 742487, 742488, 742489, 742490, 742491, 742492, 742493, 742493, 742494, 742495, 742496, 742497, 742498.	100%

Gold Projects	Tenement Number/Claim ID	Beneficial Percentage Interest
Pickle Lake – Kawashe Lake	574871, 574872, 574873, 574874, 574875, 574876, 574877, 574878, 574879, 574880, 574881, 574882, 574883, 574884, 574885, 574886, 574887, 574888, 574889, 574890, 574891, 574892, 574893, 574894, 574895, 574896, 574897, 574898, 574899, 574900, 574901, 574902, 574903, 574904, 574905, 574906, 574907, 574908, 574909, 574910, 574911, 574912, 574913, 574914, 574915, 574916, 574917, 574918, 574919, 574920, 574921, 574922, 574923, 574924, 574925, 574926, 574927, 574928, 574929, 574930, 574931, 574932, 574933, 574934, 574935, 574936, 574937, 574938, 574939, 574940, 574941, 574942, 574943, 574944, 574945, 574946, 574947, 574948, 574949, 574950, 574951, 574952, 574953, 574954, 574955, 574956, 574957, 574958, 574959, 574960, 574961, 574962, 574963, 574964, 574965, 574966, 574967, 574968, 574969, 574970, 574971, 574972, 574973, 574974, 574975, 574976, 574977, 574978, 574979, 574980, 574981, 574982, 574983, 574984, 574985, 574986, 574987, 574988, 574989, 574990, 574991, 574992, 574993, 574994, 574995, 574996, 574997, 574998, 574999, 575000, 575001, 575002, 575003, 575004, 575005, 575006, 575007, 575008, 575009, 575010, 575011, 575012, 575013, 575014, 575015, 575016, 575017, 575018, 575019, 575020, 575021, 575022, 575023, 575024, 575025, 575026, 575027, 575028, 575029, 575030, 575031, 575032, 575033, 575034, 575035, 575036, 575037, 575038, 575039, 575040, 575041, 575042, 575043, 575044, 575045, 575046, 575047, 575048, 575049, 575050, 575051, 575052, 575053, 575054, 575055, 575056, 575057, 575058, 575059, 575060, 575061, 575062, 575063, 575064, 575065, 575066, 575067, 575068, 575069, 575070, 575071, 575072, 575073, 575074, 575075, 575076, 575077, 575078, 575079, 575080, 575081, 575082, 575083, 575084, 575085, 575086, 575087, 575088, 575089, 575090, 575091, 575092, 575093, 575094, 575095, 575096, 575097, 575098, 575099, 575100, 575101, 575102, 575103, 575104, 575105, 575106, 575107, 575108, 575109, 575110, 575111, 575112, 575113, 575114, 575115, 575116, 575117, 575118, 575119, 575120, 575121, 575122, 575123, 575124, 575125, 575126, 575127, 575128, 575129, 575130, 575131, 575132, 575133, 575134, 575135, 575136, 575137, 575138, 575139, 575140, 575141, 575142, 575143, 575144, 575145, 575146, 575147, 575148, 575149, 575150, 575151, 575152, 575153, 575154, 575155, 575156, 575157, 575158, 575159, 575160, 575161, 575162, 575163, 575164, 575165, 575166, 575167, 575168, 575169, 575170, 575171, 575172, 575173, 575174, 575175, 575176, 575177, 575178, 575179, 575180, 575181, 575182, 575183, 575184, 575185, 575186, 575187, 575188, 575189, 575190, 575191, 575192, 575193, 575194, 575195, 575196, 575197, 575198, 719921.	100%
Pickle Lake – Kawashe Lake North	625482, 625483, 625484, 625485, 625486, 625487, 625488, 625489, 625490, 625491, 625492, 625493, 625494, 625495, 625496, 625497, 625498, 625499, 625500, 625502, 625503, 625504, 625505, 625506, 625507, 625508, 625509, 625510, 625511, 625512, 625513, 625514, 625515, 625516, 625517, 625518, 625519, 625520, 625521, 625522, 625523, 625524, 625525, 625526, 625527, 625528, 625529, 625530, 625531, 625532, 625533, 625534, 625535, 625536, 625537, 625538, 625539, 625540, 625541, 625542, 625543, 625544, 625545, 625546.	100%
Pickle Lake – Keating Lake	574492, 574493, 574494, 574495, 574496, 574497, 574498, 574499, 574500, 574501, 574502, 574503, 574504, 574505, 574506, 574507, 574508, 574509,	100%

Gold Projects	Tenement Number/Claim ID	Beneficial Percentage Interest
	574510, 574511, 574512, 574513, 574514, 574515, 574516, 574517, 574518, 574519, 574520, 574521, 574522, 574523, 574524, 574525, 574526, 574527, 574528, 574529, 574530, 574531, 574532, 574533, 574534, 574535, 574536, 574537, 574538, 574539, 574540, 574541, 574542, 574543, 574544, 574545, 574546, 574547, 574548, 574549, 574550, 574551, 574552, 574553, 574554, 574555, 574556, 574557, 574558, 574559, 574560, 574561, 574562, 574563, 574564, 574565, 574566, 574567, 574568, 574569, 574570, 574571, 574572, 574573, 574574, 574575, 574576, 574577, 574578, 574579, 574580, 574581, 574582, 574583, 574584, 574585, 574586, 574587, 574588, 574589, 574590, 574591, 574722, 574723, 574724, 574725, 574726, 574727, 574728, 574729, 574731, 574732, 574733, 579929, 579930, 579931, 579932, 579933, 579934, 579935, 579936, 579937, 579938, 579939, 579940, 579941, 579942, 579943, 579944, 579945, 579946, 579947, 579948, 579949, 579950, 579951, 579952, 579953, 579954, 579955, 579956, 579957, 579958, 579959, 579960, 579961, 579962, 579963, 579964, 579965, 579966, 579967, 579968, 579969, 579970, 579971, 579972, 579973, 579974, 579975, 579976, 579977, 579978.	
Pickle Lake – Meen Lake	579775, 579776, 579777, 579778, 579779, 579780, 579781, 579782, 579783, 579784, 579785, 579786, 579787, 579788, 579789, 579790, 579791, 579792, 579793, 579794, 579795, 579796, 579797, 579798, 579799, 579800, 579801, 579802, 579803, 579804, 579805, 579806, 579807, 579808, 579809, 579810, 579811, 579812, 579813, 579814, 579815, 579816, 579817, 579818, 579819, 579820, 579821, 579822, 579823, 579824, 579825, 579826, 579827, 579828, 579829, 579830, 579831, 579832, 579833, 579834, 579835, 579836, 579837, 579838, 579839, 579840, 579841, 579842, 579843, 579844, 579845, 579846, 579847, 579848, 579849, 579850, 579851, 579852, 579853, 579854, 579855, 579856, 579857, 579858, 579859, 579860, 579861, 579862, 579863, 579864, 579865, 579866, 579867, 579868, 579869, 579870, 579871, 579872, 579873, 579874, 579875, 579876, 579877, 579878, 579879, 579880, 579881, 579882, 579883, 579884, 579885, 579886, 579887, 579888, 579889, 579890, 579891, 579892, 579893, 579894, 579895, 579896, 579897, 579898, 579899, 579900, 579901, 579902, 579903, 579904, 579905, 579906, 579907, 579908, 579909, 579910, 579911, 579912, 579913, 579914, 579915, 579916, 579917, 579918, 579919, 579920, 579921, 579922, 579923, 579924, 579925, 579926, 579927, 579928, 695369, 695683, 695688, 706126, 706127, 706128, 706129, 706130, 706131, 706132, 706133, 706134, 706135, 706136, 706137, 706138, 706139, 706140, 706141, 706142, 706143, 706144, 706145, 706146, 706149, 706150, 706151, 706152, 706153, 706154, 706155, 706156, 706157, 706158, 706159, 706160, 706161, 706162, 706163, 706164, 706165, 706166, 706167, 706168, 706169, 706170, 706171, 706172, 706173, 706174, 706175, 706176, 706177, 706178, 706179, 706180, 706181, 706182, 706183, 706184, 706185, 706186, 706187, 706188, 706189, 706190, 706191, 706192, 706193, 706194, 706195, 706196, 706197, 706198, 706199, 706200, 706201, 706202, 706203, 706204, 706205, 706206, 706207, 706208, 706209, 706210, 706211, 706212, 706213, 706214, 706215, 706216, 706217, 706218, 706219, 706220, 706221, 706222, 706223, 706224, 706225, 706226, 706227, 706228, 706229, 706230, 706231, 706232, 706233, 706234, 706235, 706236, 706237, 706238, 706239, 706240, 706241, 706242, 706243, 706244, 706245, 706246, 706247, 706248, 706249, 706250, 706251, 706252, 706253, 706254, 706255, 706256, 706257, 706258,	100%



Gold Projects	Tenement Number/Claim ID	Beneficial Percentage Interest
	706259, 706260, 706261, 706262, 706263, 706264, 706265, 706266, 706267, 706268, 706269, 706270, 706271, 706272, 706273, 706274, 706275, 706276, 706277, 706278, 706279, 706280, 706281, 706282, 706283, 706284, 706285, 706286, 706287, 706288, 706289, 706290, 706291, 706292, 706293, 706294, 706295, 706296, 706297, 706298, 706299, 706300, 706301, 706302, 706303, 706304, 706305, 706306, 706307, 706308, 706309, 706310, 706311, 706312, 706313, 706314, 706315, 706316, 706317, 706318, 706319, 706320, 706321, 706322, 706323, 706324, 706325, 706326, 706327, 706328, 706329, 706330, 706331, 706332, 706333, 706334, 706335, 706336, 706337, 706338, 706339, 706340, 706341, 706342, 706343, 706344, 706345, 706346, 706347, 706348.	
Pickle Lake - Nabemakoseka	704777, 704778, 704779, 704780, 704781, 704782, 704783, 704784, 704785, 704786, 704787, 704788, 704789, 704790, 704791, 704792, 704793, 704794, 704795, 704796, 704797, 704798, 704799, 704800, 704801, 704802, 704803, 704804, 704805, 704806, 704807, 704808, 704809, 704810, 704811, 704812, 704813, 704814, 704815, 704816, 704817, 704818, 704819, 704820, 704821, 704822, 704823, 704824, 704825, 704826, 704827, 704828, 704829, 704830, 704831, 704832, 704833, 704834, 704835, 704836, 704837, 704838, 704839, 704840, 704841, 704842, 704843, 704844, 704845, 704846, 704847, 704849, 704850, 704851, 704852, 704853, 704854, 704855, 704856, 704857, 704858, 704859, 704860, 704969, 704970, 704971, 704972, 704973, 704974, 704975, 704976, 704977, 704978, 704979, 704980, 704981, 704982, 704983, 704984, 704985, 704986, 704987, 904988, 704989, 704990, 704991, 704992, 704993, 704994, 704995, 704996, 704997, 704998, 704999, 705000, 705001, 705002, 705003, 705004, 705005, 705006, 705007, 705008, 705009, 705010, 705011, 705012, 705013, 705014, 705015, 705016, 705017, 705018, 705019, 705020, 705021, 705022, 705023, 705024, 705025, 705026, 705027, 705028, 705029, 705030, 705031, 705032, 705033, 705034, 705035, 705036, 705037, 705038, 705039, 705040, 705041, 705042, 705043, 705044, 705045, 705046, 705047, 705048, 705049, 705050, 705051, 705052, 705053, 705054, 705055, 705056, 705057, 705058, 705059, 705060, 705061, 705062, 705063, 705064, 705065, 705066, 705067, 705068, 705069, 705070, 705071, 705072, 705073, 705074, 705075, 705076, 705077, 705078, 705079, 705080, 705081, 705082, 705083, 705084, 705085, 705086, 705087, 705088, 705089, 705090, 705091, 705092, 705093, 705094, 705095, 705096, 705097, 705098, 705099, 705100, 705101, 705102, 705103, 705104, 705105, 705106, 705107, 705108, 705109, 705110, 705111, 705112, 705113, 705114, 705115, 705116, 705117, 705118, 706097, 706098, 706099, 706100, 706101, 706102, 706103, 706104, 706105, 706106, 706107, 706108, 706109, 706110, 706111, 706112, 706113, 706114, 706115, 706116, 706117, 706118, 706119, 706120, 706121, 706122, 706123, 706124, 706125, 733146, 733147, 733148, 733149, 795351.	100%
Pickle Lake – New Patricia	131784, 147867, 147868, 147869, 147870, 147871, 159805, 161958, 184465, 193806, 196500, 211821, 214522, 214523, 214524, 240460, 248516, 248517, 248518, 248519, 251221, 260527, 300387, 315009, 315010, 315011, 317709, 329913, 329914, 329915, 329916, 335930, 339299, 500919, 500920, 500921, 500922, 500923, 500924, 500925, 500926, 500927, 500928, 500929, 500930, 500931, 500932, 500933, 500934, 500935, 500936, 500937, 500938, 500939, 500940, 500941, 500942, 500943, 500944, 500945, 500946, 500947, 500948,	100%

Gold Projects	Tenement Number/Claim ID	Beneficial Percentage Interest
	500949, 500950, 500951, 500952, 500953, 500954, 500955, 500956, 500957, 500958, 500959, 500960, 500961, 500962, 500963, 500964, 500965, 500966, 500967, 500968, 500969, 500970, 500971, 500972, 500973, 500974, 500975, 500976, 500977, 500978, 500979, 500980, 500981, 500982, 500983, 500984, 500985, 500986, 500987, 500988, 500989, 500990, 500991, 500992, 500993, 500994, 500995, 500996, 500997, 500998, 500999, 501000, 501001, 501002, 501003, 501004, 501005, 501006, 501007, 501008, 501009, 501010, 501011, 501012, 501013, 501014, 501015, 501016, 501017, 501018, 501142, 501143, 501144, 501145, 501146, 501147, 501148, 501149, 501150, 501151, 501152, 501153, 501154, 501155, 501156, 501157, 501158, 501159, 501160, 501161, 501162, 501163, 501164, 501165, 501166, 501167, 501168, 501169, 501170, 501171, 501172, 501173, 501174, 501175, 501176, 501177, 501178, 501179, 501180, 501181, 501182, 501183, 501184, 501185, 501186, 501187, 501188, 501189, 501190, 501191, 501210, 501211, 501212, 501213, 501214, 501215, 501216, 501217, 501218, 501219, 501220, 501221, 501222, 501223, 501224, 501225, 501226, 501227, 501228, 501229, 501230, 501231, 501232, 501233, 501234, 501235, 501236, 501237, 501238, 501239, 501240, 501241, 501242, 501243, 501244, 501245, 501246, 501247, 501248, 501249, 501250, 501251, 501252, 501253, 501254, 501255, 501256, 501257, 501258, 501259, 501292, 501293, 501294, 501295, 501296, 501297, 501298, 501299, 501300, 501301, 501302, 501303, 501304, 501305, 501306, 501307, 501308, 501309, 501310, 501311, 501312, 501313, 501314, 501315, 501316, 501317, 501318, 501319, 501320, 501321, 501322, 501323, 501324, 501325, 501326, 501327, 501328, 501329, 501330, 501331, 501332, 501333, 501339, 501340, 501341, 501342, 501343, 501344, 501345, 501346, 501347, 501348, 501349, 501350, 501351, 501352, 501353, 501354, 501355, 501356, 501357, 501358, 501359, 501360, 501361, 501362, 501363, 501364, 501365, 501366, 501367, 501368, 501369, 501370, 501371, 501372, 501373, 501374, 501375, 501376, 501377, 501378, 501379, 501380, 501381, 501382, 501383, 501384, 501385, 501386, 501387, 501388, 501527, 501528, 501529, 501530, 501531, 501532, 501533, 501534, 501535, 501536, 501537, 501538, 501539, 501540, 501541, 501542, 501543, 501544, 501545, 501546, 501547, 501548, 501549, 501550, 501551, 501552, 501568, 501569, 501570, 501571, 501572, 501573, 501574, 501575, 501576, 501577, 501578, 501579, 501580, 501581, 501582, 501583, 501584, 501585, 501586, 501587, 501588, 501589, 501590, 501591, 501592, 501593, 501594, 501595, 501596, 501597, 501598, 501599, 501600, 501601, 501602, 501603, 501604, 501605, 501606, 501607, 501608, 501609, 501610, 501611, 501612, 501613, 501614, 501615, 501616, 501617, 501814, 501815, 501816, 501817, 501818, 501819, 501820, 501821, 501822, 501823, 501824, 501825, 501826, 501827, 501828, 501829, 501830, 501831, 501832, 501833, 501834, 501835, 501836, 501837, 501838, 501839, 501840, 501841, 501842, 501843, 501844, 501845, 501846, 501847, 501848, 501849, 501850, 501851, 501852, 501853, 501854, 501855, 501856, 501857, 501858, 501859, 501860, 501861, 501862, 501863, 502011, 502012, 502013, 502014, 502015, 502016, 502017, 502018, 502019, 502020, 502021, 502022, 502023, 502024, 502025, 502026, 502027, 502028, 502029, 502030, 502031, 502032, 502033, 502034, 502035, 502036, 502037, 502038, 502039, 502040, 502041, 502042, 502043, 502044, 502045, 502046, 502047, 502048, 502049, 502050, 502051, 502052, 502053, 502054,	

Gold Projects	Tenement Number/Claim ID	Beneficial Percentage Interest
	502055, 502056, 502057, 502058, 502059, 502060, 502132, 502133, 502134, 502135, 502136, 502137, 502138, 502139, 502140, 502141, 502142, 502143, 502144, 502145, 502146, 502147, 502148, 502149, 502150, 502151, 502152, 502153, 502154, 502155, 502156, 502157, 502158, 502159, 502160, 502161, 502162, 502163, 502164, 502165, 502166, 502167, 502168, 502169, 502170, 502171, 502172, 502173, 502174, 502175, 502176, 502177, 502178, 502179, 502180, 502181, 502227, 502229, 502231, 502232, 502234, 502236, 502238, 502240, 502241, 502243, 502245, 520337, 520338, 520339, 520340, 520935, 520936, 520937, 520938, 520939, 520940, 520941, 520942, 520943, 520944, 520945, 520946, 520947, 520948, 520949, 520950, 520951, 520952, 520953, 520954, 520955, 520956, 520957, 520958, 520959, 520960, 520961, 520962, 520963, 520964, 520965, 520966, 520967, 520968, 520969, 520970, 520971, 520972, 520973, 520974, 520975, 520976, 520977, 520978, 520979, 520980, 520981, 520982, 520983, 520984, 520985, 520986, 520987, 520988, 520989, 520990, 520991, 520992, 520993, 520994, 520995, 520996, 520997, 520998, 520999, 521000, 521001, 521002, 521003, 521004, 521005, 521006, 521007, 521008, 521009, 521010, 521011, 521012, 521013, 521014, 521015, 521016, 521017, 521018, 521019, 521020, 521021, 521022, 521023, 521024, 521025, 521026, 521027, 521028, 521029, 521030, 521031, 521032, 521033, 521034, 521035, 521036, 521037, 521038, 521039, 521040, 521041, 521042, 521043, 521044, 521045, 521046.	
Pickle Lake – Reylea Lake	580157, 580158, 580159, 580160, 580161, 580162, 580163, 580164, 580165, 580166, 580167, 580168, 580169, 580170, 580171, 580172, 580173, 580174, 580175, 580176, 580177, 580178, 580179, 580180, 580181, 580182, 580183, 580184, 580185, 580186, 580187, 580188, 580191, 580192, 580193, 580194, 580195, 580196, 580197, 580198, 580199, 580200, 580201, 580202, 580203, 580204, 580205, 580206, 580207, 580208, 580209, 580210, 580211, 580212, 580213, 580214, 580215, 580216, 580217, 580218, 580219, 580220, 580221, 580222, 580223, 580224, 580225, 580226, 580227, 580228, 580229, 580230, 580231, 580232, 580233, 580234, 580235, 580236, 580237, 580238, 580239, 580240, 580241, 580242, 580243, 580244, 580245, 580246, 580247, 580248, 580249, 580250, 580251, 580252, 580253, 580254, 580255, 580256, 580257, 580258, 580259, 580260, 580261, 580262, 580263, 580264, 580265, 580266, 580267, 580268, 580269, 580270, 580271, 580272, 580273, 580274, 580275, 580276, 580277, 580278, 580279, 580280, 580281, 580282, 580283, 580284, 580285, 580286, 580287, 580288, 580289, 580290, 580291, 580292, 580293, 580294.	100%
Pickle Lake – South Limb	100831, 101396, 101525, 101526, 102692, 102906, 116721, 118004, 118221, 121656, 121657, 125050, 125051, 125052, 125053, 125760, 125761, 125762, 129676, 160810, 164956, 166176, 166304, 166305, 169680, 169681, 173060, 178291, 178314, 178995, 178996, 178997, 179657, 189146, 189147, 189148, 194187, 194210, 194211, 194935, 194936, 194937, 195563, 218371, 219081, 224876, 225586, 225587, 225588, 226523, 226524, 226525, 227088, 231687, 232868, 260845, 262197, 262198, 265588, 266276, 266277, 266278, 268320, 268321, 268322, 273549, 273550, 281607, 282260, 282261, 285637, 285770, 289638, 289639, 293068, 293069, 293146, 293147, 297669, 297670, 321676, 321677, 322315, 328186, 328833, 328834, 328835, 341207, 341208, 535546,	100%

Gold Projects	Tenement Number/Claim ID	Beneficial Percentage Interest
	535547, 535548, 535549, 535550, 535551, 535552, 535553, 535554, 535555, 535556, 535557, 551427, 562023, 562024, 562025, 562026.	
Pickle Lake – Two Fifty	541335, 541338, 541339, 541340, 541342, 541343, 541347, 541348, 541349, 541351, 541352, 541353, 541354, 541356, 541357, 541362, 541363, 541364, 541365, 541367, 541368, 541369, 541370, 541371, 541372, 541373, 541374, 541376, 541377, 541378, 541379, 541380, 541381, 541382, 541383, 541384, 541385, 541387, 541388, 541389, 541390, 541391, 541392, 541393, 541394, 541395, 541396, 541397, 541398, 541399, 541400, 541401, 562623, 562624, 562625, 562626, 562627, 562628, 562629, 562630, 562631, 562632, 562633, 562634, 562635, 562637, 562638, 562639, 562640, 562641, 562642, 562643, 562644, 562645, 562646, 562647.	100%
Pickle Lake – Two Fifty North	614611, 614612, 614613, 614614, 614615, 614616, 614617, 614618, 614619, 614620, 614621, 614622, 614623, 614624, 614625, 614626, 614627, 614628, 614629, 614630, 614631, 614632, 614633, 614634, 614635, 614636, 614637, 614638, 614639, 614640, 614641, 614642, 614643, 614644, 614645, 614646, 614647, 614648, 614649, 614650, 614651, 614652, 614653, 614654, 614655, 614656, 614657, 614658, 614659, 614660, 614661, 614662, 614663, 614664, 614665, 614666, 614667, 614668, 614669, 614670, 614671, 614672, 614673, 614674, 614675, 614676, 614677, 614678, 614679, 614680, 614681, 614682, 614683, 614684, 614685, 614686, 614687, 614688, 614689, 614690, 614691, 614692, 614693, 614694, 614695, 614696, 614697, 614698, 614699, 614700, 614701, 614702, 614703, 614704, 614705, 614706, 614707, 614708, 614709, 614710, 614711, 614712, 614713, 614714, 614715, 614716, 614717, 614718, 614719, 614720, 614721, 614722, 614723, 614724, 614725, 614726, 614727, 614728, 614729, 614730, 614731, 614732, 614733, 614734, 614735, 614736, 614737, 614738, 614739, 614740, 614741, 614742, 614743, 614744, 614745, 614746, 614747, 614748, 614749, 614750, 614751, 614752, 614753, 614754, 614755, 614756, 614757, 614758, 614759, 614760, 614761, 614762, 614763, 614764, 614765, 614766, 614767, 614768, 614769, 614770, 614771, 614772, 614773, 614774, 614775, 614776, 614777, 614778, 614779, 614780, 614781, 614782, 614783, 614784, 614785, 614786, 614787, 614788, 614789, 614790, 614791, 614792, 614793, 614794, 614795, 614796, 614797, 614798, 614799, 614800, 614801, 614802, 614803, 614804, 614805, 614806, 614807, 614808, 614809, 614810, 614811, 614812, 614813, 614814, 614815, 614816, 614817, 614818, 614819, 614820, 614821, 614822, 614823, 614824, 614825, 614826, 614827, 614828, 614829, 614830, 614831, 614832, 614833, 614834, 614835, 614836, 614837, 614838, 614839, 614840, 614841, 614842, 614843, 614844, 614845, 614846, 614847, 614848, 614849, 614850, 614851, 614852, 614853, 614854, 614855, 614856, 614857, 614858, 614859, 614860, 614861, 614862, 614863, 614864, 614865, 614866, 614867, 614868, 614869, 614870, 614871, 614872, 614873, 614874, 614875, 614876, 614877, 614878, 614879, 614880, 614881, 614882, 614883, 614884, 614885, 614886, 614887, 614888, 614889, 614890, 614891, 614892, 614893, 614894, 614895, 614896, 614897, 614898, 614899, 614900, 614901, 614902, 614903, 614904, 614905, 614906, 614907, 614908, 614909, 614910, 614911, 614912, 614913, 706353, 706354, 706355, 706356, 706357, 706358, 706359, 706365, 706366, 706367, 706368, 706369, 706370, 706371, 706372, 706373, 706374, 706375, 706376, 706377, 706378, 706379, 706380, 706381, 706382, 706383, 706384, 706385, 706386.	100%

<b>Gold Projects</b>	<b>Tenement Number/Claim ID</b>	<b>Beneficial Percentage Interest</b>
Pickle Lake – West Pickle	104760, 104916, 104917, 104918, 104919, 104920, 105656, 105657, 120067, 120068, 126563, 128549, 128550, 138039, 139349, 147534, 147535, 147536, 155122, 155325, 165265, 171104, 171105, 171106, 171107, 173237, 173238, 176769, 184045, 187800, 191356, 191357, 199313, 199314, 199962, 207329, 227360, 227361, 236415, 239988, 248070, 248771, 248772, 250862, 256698, 256699, 266552, 267218, 267219, 273313, 285880, 285881, 287193, 293994, 295326, 295992, 300139, 303169, 306594, 316767, 316768, 320515, 323119, 325091, 325092, 333749, 333750, 333751, 335552, 336241, 336242, 338336, 345540, 345541, 345542, 345543, 541375, 541386.	100%

<b>Graphite Projects</b>	<b>Tenement Number/Claim ID</b>	<b>Beneficial Percentage Interest</b>
Pickle Lake - Manitouwadge	106808, 109041, 110086, 113625, 113626, 118723, 120303, 128662, 131666, 131972, 134369, 148355, 148356, 148357, 151037, 160975, 162102, 162103, 177448, 178748, 178749, 184310, 185993, 185994, 206507, 206508, 213679, 214769, 215274, 216286, 233311, 233312, 233313, 242045, 245488, 246007, 248870, 251308, 251595, 251596, 251597, 251598, 252658, 252659, 254326, 262718, 265818, 265819, 265820, 270688, 270689, 270690, 271714, 271715, 271716, 271717, 271718, 271719, 280111, 280112, 281804, 281805, 289867, 298697, 299651, 300011, 302379, 302380, 302381, 317648, 317649, 317650, 317651, 318725, 329071, 330634, 330635, 332614, 338507, 338508, 338509, 751443, 751444, 751445, 751446, 751447, 751448, 751449, 751450.	100%

2. Mining tenements acquired during the quarter and their location:

Gold Project	Tenement Number	Status	Location	Beneficial Percentage Interest
Pickle Lake – Dorothy Dobie	695378.	Granted	Ontario, Canada	100%
Pickle Lake – Fry McVean	672256, 695358, 695372.	Granted	Ontario, Canada	100%
Pickle Lake – Meen	695683.	Granted	Ontario, Canada	100%
Pickle Lake – Nabemakoseka	733146, 733147, 733148, 733149, 795351.	Granted	Ontario, Canada	100%

3. Mining tenements disposed of during the quarter and their location:

Project	Tenement Number	Status	Location	Beneficial Percentage Interest
	Nil			

4. Mining tenements amalgamated during the quarter and their location:

Gold Project	Tenement Number	Status	Location	Beneficial Percentage Interest
Pickle Lake – Kasagiminnis	124716, 236848, 292065, 292066 amalgamated to form claim 803062. 178845, 178846, 253606, 253607, 703842 amalgamated to form claim 809113.	Granted	Ontario, Canada	100%