

## Market Announcement

20 APRIL 2023

### Bannerman Energy Ltd (ASX:BMN, OTCQX:BNNLF, NSX:BMN)

#### Etango Profiled at World Nuclear Fuel Cycle Conference

Mr Brandon Munro, Chief Executive Officer, will deliver the attached presentation to a large audience of nuclear fuel buyers and other market participants.

Bannerman's Etango uranium project is one of four global uranium developments to be profiled in ***Session 4: Emergent Uranium Supply in an Undersupplied Market.***

#### This ASX release was authorised by:

Brandon Munro, Managing Director and Chief Executive Officer

20 April 2023

#### Contact

---

**Investors:**

Brandon Munro  
CEO and Managing Director  
T: +61 8 9831 1436  
[info@bmenergy.com](mailto:info@bmenergy.com)

**Media:**

Michael Vaughan  
Fivemark Partners  
T: +61 422 602 720  
[michael.vaughan@fivemark.com.au](mailto:michael.vaughan@fivemark.com.au)

---

# Etango – Namibian uranium meeting tomorrow's key supply criteria

World Nuclear Fuel Cycle,  
The Hague, 20 April 2023

# Important notices

## Cautionary Statement

Of the Mineral Resources scheduled for extraction and recovery in the Etango-8 Defined Feasibility Study production plan, 100% are classified as Measured or Indicated. Bannerman Energy Ltd (Bannerman, the Company) confirms that there are no Inferred Resources included in the DFS production schedule.

The Mineral Resources underpinning the Ore Reserve and production target in the DFS have been prepared by a competent person in accordance with the requirements of the JORC Code (2012). The Competent Person's Statement is found overleaf. For full details of the Mineral Resources estimate, please refer to the ASX release dated 6 December 2022 "*Etango-8 Definitive Feasibility Study*". Bannerman confirms that it is not aware of any new information or data that materially affects the information included in that release. All material assumptions and technical parameters underpinning the estimates in that ASX release continue to apply and have not materially changed.

This release contains a series of forward-looking statements. Generally, the words "expect," "potential", "intend," "estimate," "will" and similar expressions identify forward-looking statements. By their very nature forward-looking statements are subject to known and unknown risks and uncertainties that may cause our actual results, performance or achievements, to differ materially from those expressed or implied in any of our forward-looking statements, which are not guarantees of future performance. Statements in this release regarding Bannerman's business or proposed business, which are not historical facts, are forward-looking statements that involve risks and uncertainties, such as Mineral Resource estimates, Ore Reserve estimates, market prices of metals, capital and operating costs, changes in project parameters as plans continue to be evaluated, continued availability of capital and financing and general economic, market or business conditions, and statements that describe Bannerman's future plans, objectives or goals, including words to the effect that Bannerman or management expects a stated condition or result to occur. Forward-looking statements are necessarily based on estimates and assumptions that, while considered reasonable by Bannerman, are inherently subject to significant technical, business, economic, competitive, political and social uncertainties and contingencies. Since forward-looking statements address future events and conditions, by their very nature, they involve inherent risks and uncertainties. Actual results in each case could differ materially from those currently anticipated in such statements. Investors are cautioned not to place undue reliance on forward-looking statements, which speak only as of the date they are made.

Bannerman has concluded that it has a reasonable basis for providing these forward-looking statements and the forecast financial information included in the ASX release. This includes a reasonable basis to expect that it will be able to fund the development of Etango-8 upon successful delivery of key development milestones as and when required. The detailed reasons for these conclusions are outlined in the section of the ASX release dated 6 December 2022 "*Etango-8 Definitive Feasibility Study*" in the section titled "Funding pathway". While Bannerman considers all of the material assumptions to be based on reasonable grounds, there is no certainty that they will prove to be correct or that the range of outcomes indicated by the DFS will be achieved.

To achieve the range of outcomes indicated in the DFS, pre-production funding in excess of US\$320M will likely be required. There is no certainty that Bannerman will be able to source that amount of funding when required. It is also possible that such funding may only be available on terms that may be dilutive to or otherwise affect the value of Bannerman's shares. It is also possible that Bannerman could pursue other value realisation strategies such as a sale, partial sale or joint venture of the Etango-Project. These could materially reduce Bannerman's proportionate ownership of the Etango Project.

## Etango-8 Definitive Feasibility Study (2022)

For full details refer to Bannerman ASX release dated 6 December 2022, Etango-8 Definitive Feasibility Study. Bannerman confirms that all material assumptions underpinning the production target and forecast financial information within the DFS continue to apply and have not materially changed.

# Important notices

## Forward Looking Statements

This presentation includes various forward looking statements which are identified by the use of forward looking words such as “may”, “could”, “will”, “expect”, “believes”, “intend”, “plan”, “estimate”, “anticipate”, “continue”, and “guidance”, or other similar words and may include, without limitation statements regarding plans, strategies and objectives of management, anticipated production or construction commencement dates and expected costs or production outputs. Statements other than statements of historical fact may be forward looking statements. Bannerman believes that it has reasonable grounds for making all statements relating to future matters attributed to it in this presentation.

Forward looking statements inherently involve known and unknown risks, uncertainties and other factors that may cause the Company’s actual results, performance and achievements to differ materially from any future results, performance or achievements. Relevant factors may include, but are not limited to, changes in commodity prices, foreign exchange fluctuations and general economic conditions, increased costs and demand for production inputs, the speculative nature of exploration and project development, including the risks of obtaining necessary licences and permits and diminishing quantities or grades of resources or reserves, political and social risks, changes to the regulatory framework within which the Company operates or may in the future operate, environmental conditions including extreme weather conditions, recruitment and retention of personnel, industrial relations issues and litigation. Investors should note that any reference to past performance is not intended to be, nor should it be, relied upon as a guide to any future performance.

Forward looking statements are based on the Company and its management’s good faith assumptions relating to the financial, market, regulatory and other relevant environments that will exist and affect the Company’s business and operations in the future. The Company does not give any assurance that the assumptions on which forward looking statements are based will prove to be correct, or that the Company’s business or operations will not be affected in any material manner by these or other factors not foreseen or foreseeable by the Company or management or beyond the Company’s control.

Although the Company attempts to identify factors that would cause actual actions, events or results to differ materially from those disclosed in forward looking statements, there may be other factors that could cause actual results, performance, achievements or events not to be anticipated, estimated or intended, and many events are beyond the reasonable control of the Company. Accordingly, readers are cautioned not to place undue reliance on forward looking statements. Actual results, values, performance or achievements may differ materially from results, values, performance or achievements expressed or implied in any forward looking statement. None of Bannerman, its officers or any of its advisors make any representation or warranty (express or implied) as to the accuracy or likelihood of fulfilment of any forward looking statement, or any results, values, performance or achievements expressed or implied in any forward looking statement except to the extent required by law.

Forward looking statements in this release are given as at the date of issue only. Subject to any continuing obligations under applicable law or any relevant stock exchange listing rules, in providing this information the Company does not undertake any obligation to publicly update or revise any of the forward looking statements or to advise of any change in events, conditions or circumstances on which any such statement is based.

## Competent Person Statement

### Mineral Resources

The information in this release relating to the Mineral Resources (November 2021) of the Etango Project is based on a resource estimate compiled or reviewed by Mr Ian Glacken, Principal Consultant at Snowden Optiro Pty Ltd and a Fellow of the Australasian Institute of Mining and Metallurgy. Mr Glacken has sufficient experience that is relevant to the style of mineralisation and type of deposit under consideration and to the activity which he is undertaking to qualify as a Competent Person as defined in the 2012 Edition of the “Australasian Code for Reporting of Exploration Results, Mineral Resources and Ore Reserves”, is an independent consultant to Bannerman and a Qualified Person as defined by Canadian National Instrument 43-101. Mr Glacken consents, and provides corporate consent for Snowden Optiro Pty Ltd, to the inclusion in this release of the matters based on his information in the form and context in which it appears.

### Ore Reserves

The information in this release relating to the Ore Reserves (June 2022) of the Etango-8 DFS Project is based on information compiled or reviewed by Mr Werner K Moeller, a Director since 2016 of Qubeka Mining Consultants CC based in Klein Windhoek, Namibia. Prior to 2016 Mr. Moeller was a Director of VBKom Consulting Engineers (Pty) Ltd based in Centurion, South Africa from 2008. Mr Moeller is a Member of The Australasian Institute of Mining and Metallurgy (MAusIMM nr. 329888), a Member of the South African Institute of Mining and Metallurgy (MSAIMM nr. 704793) and a Member of the Canadian Institute of Mining, Metallurgy and Petroleum (MCIM nr. 708163). He graduated from the University of Pretoria, South Africa and holds a Bachelor degree, majoring in Mine Engineering (2001) and an Honours degree, majoring in Industrial Engineering (2002). Mr Moeller is a practising mining engineer, having practiced his profession continuously since 2002, and has sufficient experience relevant to the style of mineralisation and types of deposits under consideration and to the activity which is being undertaken to qualify him as a Competent Person as defined in the 2012 Edition of the “Australasian Code for Reporting of Exploration Results, Mineral Resources and Ore Reserves”. He has read and understood the requirements of the 2012 Edition of the Australasian Code for Reporting of Exploration Results and the Technical Report has been prepared in compliance with that code. Mr Moeller consents to the filing of this release with any stock exchange and other regulatory authority and any publication by them for regulatory purposes, including electronic publication in the public company files on their websites accessible by the public. Mr Moeller furthermore does not have nor does he expect to receive a direct or indirect interest in the Etango property of Bannerman, and he does not beneficially own, directly or indirectly, any securities of Bannerman or any associate or affiliate of such company. Mr Moeller consents to the inclusion in this release of the matters based on his information in the form and context in which it appears.





ABOUT BANNERMAN ENERGY

# Social leadership in the supply of raw materials for emissions free power

EVERY YEAR ETANGO-8 WILL DELIVER

# Globally significant impact

**3.5 Mlbs  
 $U_3O_8$**

Enough uranium to power 7-8 large nuclear reactors.

**25 million  
tonnes**

The equivalent amount of coal that our production displaces.

**64 million  
tonnes**

Carbon emissions avoided from nuclear power using our uranium (if displacing coal-fired power).

**760  
Namibian  
jobs**

760 well paid direct jobs and a multiplier effect of up to 5,000 indirect jobs.





# Etango Uranium Project



Proximate

Low risk

Long term

Expandable

Socially responsible

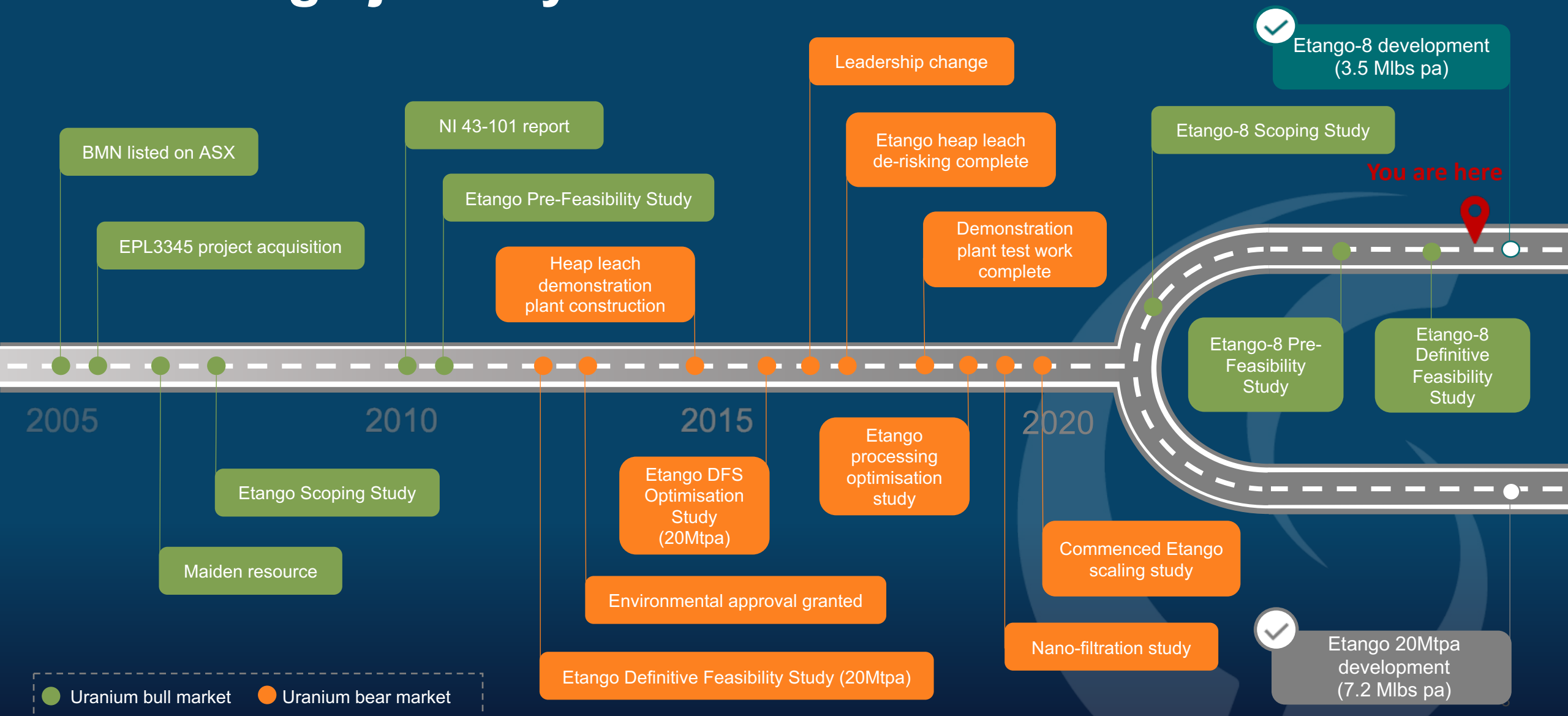


# Proximate

Near term production



# The Etango journey



# Established tenure and environmental permitting

## Mining Licence

application lodged

## Environmental Clearance Certificate

awarded for  
Etango mine

Community,  
political and  
government  
support for  
project

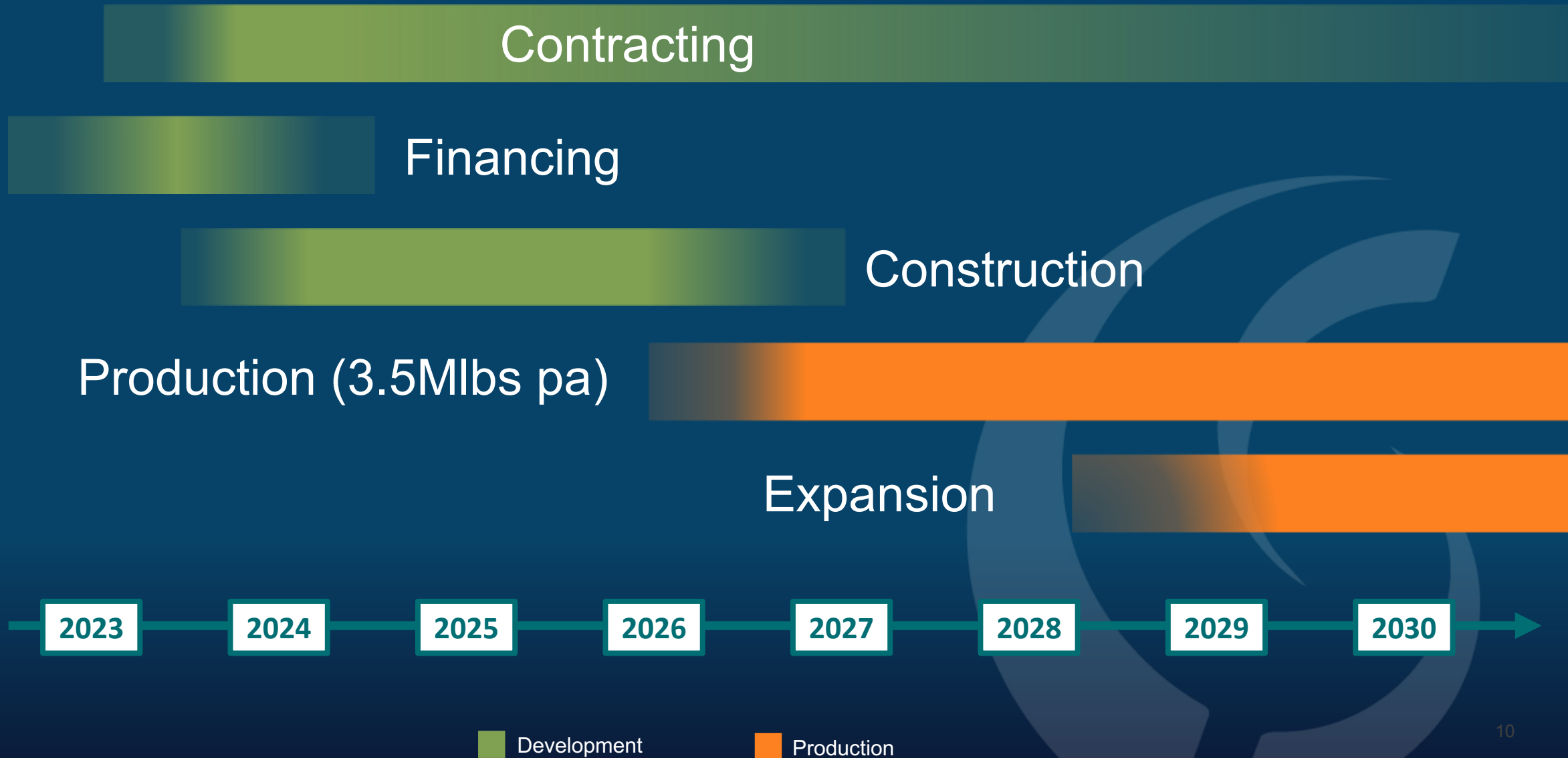
## Environmental Clearance Certificate

awarded for power  
lines, water  
pipeline, linear  
infrastructure



Bannerman constructs signs and barriers to reduce illegal recreational driving in the Namib Naukluft National Park

# The Etango production window





# Deep Namibian, uranium and nuclear expertise

**Ronnie Beevor**

NED, Chairman



**Mike Leech**

Non-Executive Director



**Alison Terry**

Non-Executive Director



**Clive Jones**

Non-Executive Director



**Ian Burvill**

Non-Executive Director



**Twapewa Kadhikwa**

Non-Executive Director, Namibia



**Brandon Munro**

MD & Chief Executive Officer



**Gavin Chamberlain**

Chief Operating Officer



**Werner Ewald**

Managing Director, Namibia



**Steve Herlihy**

Chief Financial Officer



**John Turney**

Project Adviser



**Norman Green**

Chair, Technical Steering Committee





# Low Risk

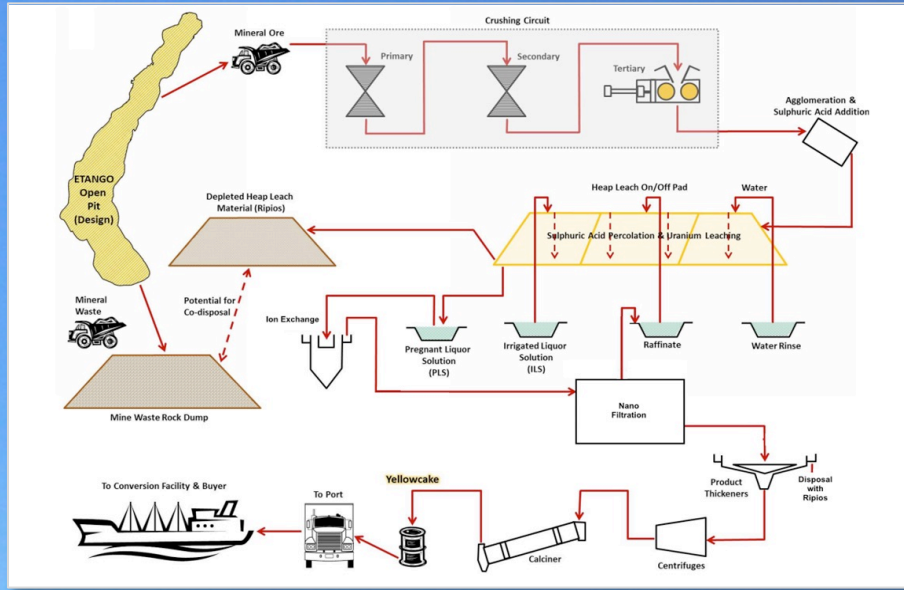
Simple, conventional and low technical risk project.

Established, reliable jurisdiction

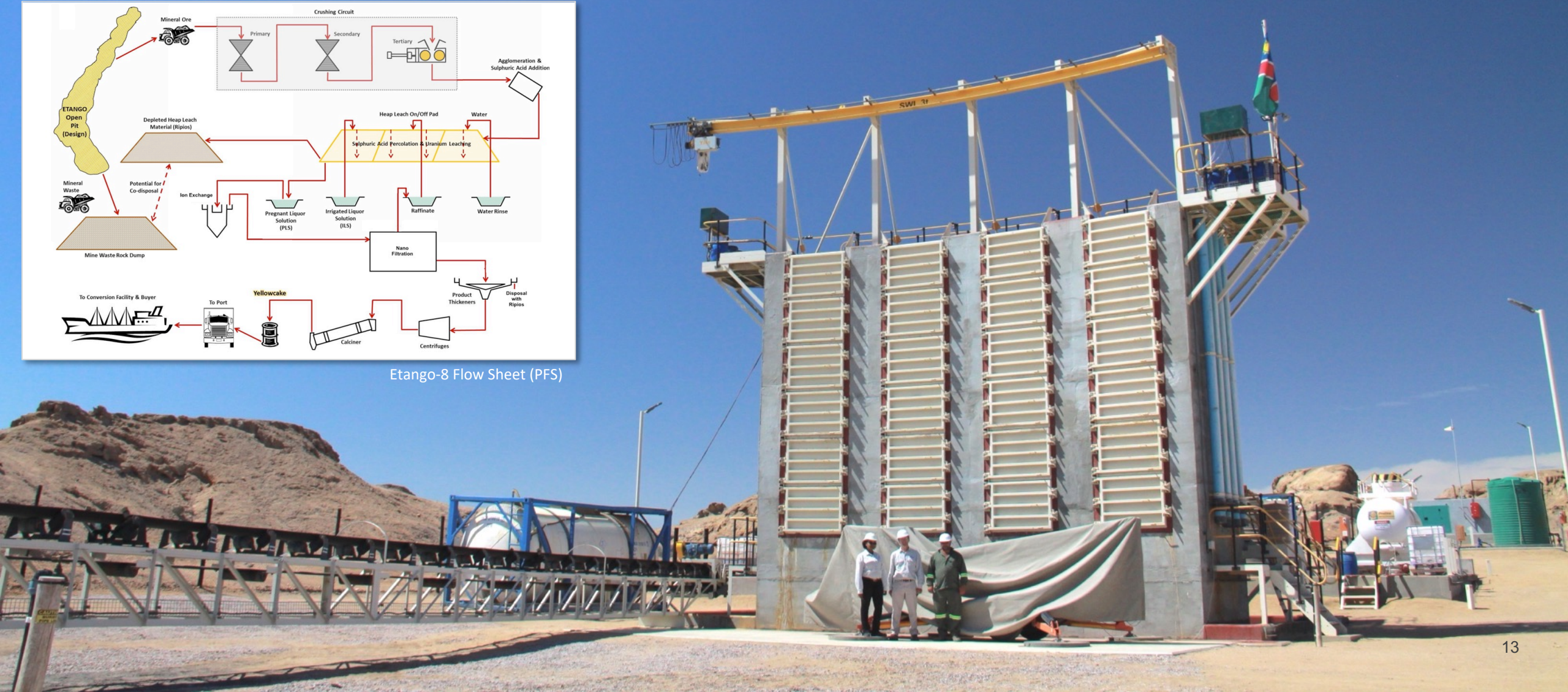


# PROVEN FLOW-SHEET DE-RISKED OVER SEVERAL YEARS

## Low technical risk



Etango-8 Flow Sheet (PFS)





PREMIER URANIUM JURISDICTION

# Namibia

**Etango**  
NAMIBIA

## Highly established nuclear regulatory regime

- ✓ Top 3 global uranium player
- ✓ 45 year production history and export credentials
- ✓ Three large-scale mines: Rossing, Husab, Langer Heinrich

## Ideal jurisdiction for uranium development

- ✓ Politically/socially supportive of uranium
- ✓ Excellent infrastructure: port/road/rail/water/power
- ✓ Uranium a key pillar of national development agenda

## First class operating jurisdiction

- ✓ Stable and secure
- ✓ Strong Rule of Law
- ✓ Transparent mining legislation





Image courtesy Oklo Inc

# Long term

Decades-long supply source



INITIAL PRODUCTION OF 3.5 Mlbs

# 15 year mine life... initially

- Capacity to extend production beyond 15 years
- Option of expanding production beyond 3.5 Mlbs per annum
- Geological continuity below resource



Rossing uranium mine, Namibia



# Multi-decade uranium inventory

**225 Mlbs U<sub>3</sub>O<sub>8</sub>**  
Total Etango-only resources (55ppm cut-off)

**Satellite  
deposits**  
(trucking distance)

**59.9 Mlbs**  
Etango-8 Ore  
reserve

**Expansion  
capacity**

**15 Years**  
Initial mine life

Scale-up and/or  
life extension

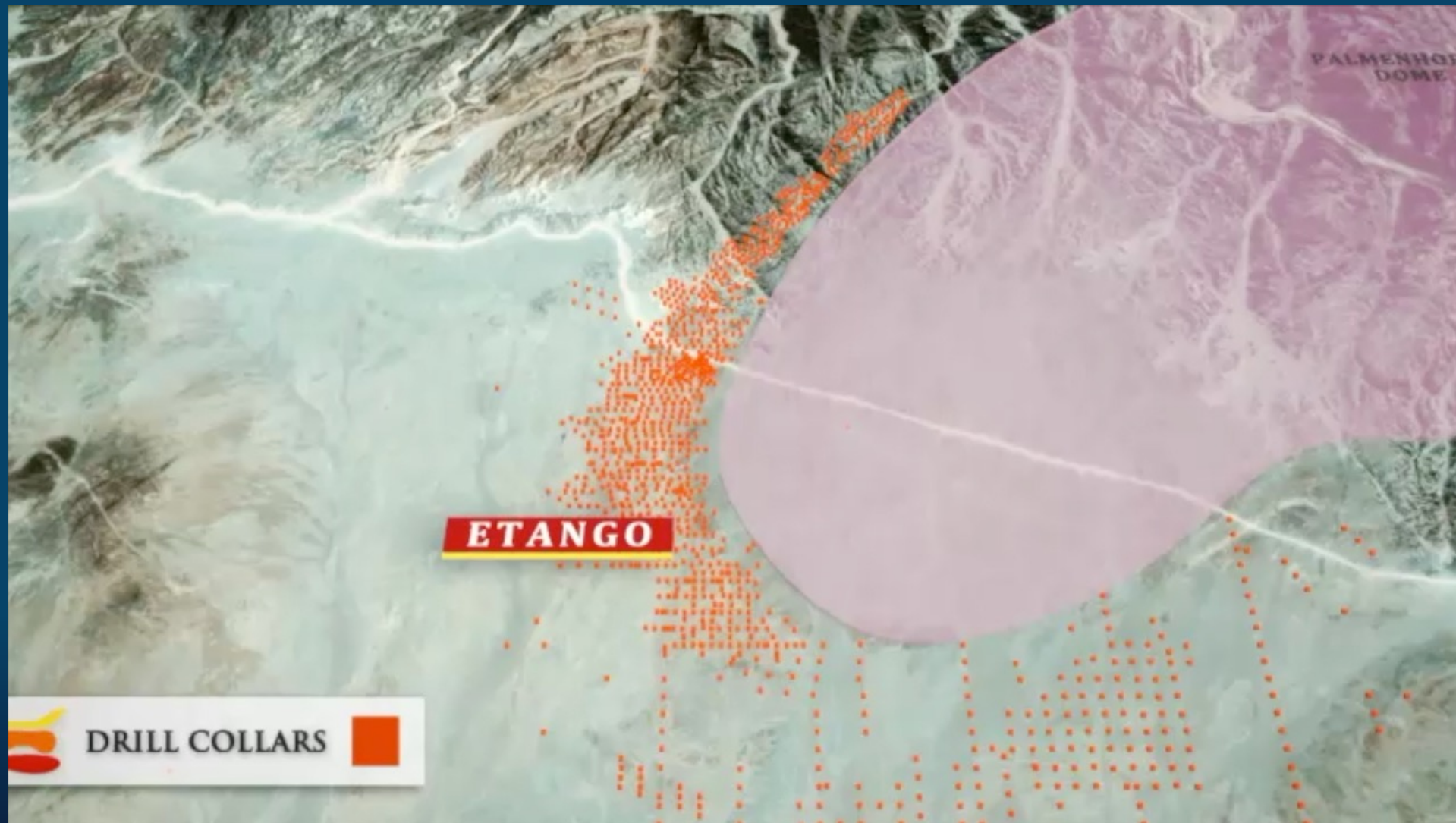
**Scale + scalability**

1. For full details of the Mineral Resources and Ore Reserve estimate and disclosures, please refer to ASX release dated 6 December 2022, "Etango-8 Definitive-Feasibility Study". The Mineral Resources underpinning the Ore Reserve have been prepared by a competent person in accordance with the requirements of the JORC Code (2012). The Competent Person's Statement(s) are found in the section of this ASX release titled "Competent Person's Statement(s)". Bannerman confirms that it is not aware of any new information or data that materially affects the information included in that release. All material assumptions and technical parameters underpinning the estimates in that ASX release continue to apply and have not materially changed

Nov 2021 Mineral Resource Estimate JORC (2012) reported within a US\$75 pit shell above a 55 ppm U <sub>3</sub> O <sub>8</sub> cut-off	Tonnes (Mt)	Grade (ppm U <sub>3</sub> O <sub>8</sub> )	Contained U <sub>3</sub> O <sub>8</sub> (Mlb)
<b>Resource Category</b>			
Measured	32.4	201	14.3
Indicated	345.7	195	148.5
Inferred	140.6	200	62.0
<b>Total</b>	<b>540.2</b>	<b>197</b>	<b>224.9</b>
Nov 2021 Mineral Resource Estimate JORC (2012) reported within a US\$75 pit shell above a 100 ppm U <sub>3</sub> O <sub>8</sub> cut-off	Tonnes (Mt)	Grade (ppm U <sub>3</sub> O <sub>8</sub> )	Contained metal (Mlb)
<b>Resource Category</b>			
Measured	26.6	226	13.3
Indicated	276.9	223	136.4
Inferred	112.5	230	57.1
<b>Total</b>	<b>428.7</b>	<b>225</b>	<b>206.8</b>

OVER 300,000m OF DRILLING DEFINES WORLD-CLASS SCALE ORE BODY

# The Etango ore body



ORE BODY OPEN AT DEPTH PLUS SATELLITE DEPOSITS

# Likely ore-body extension below existing resource



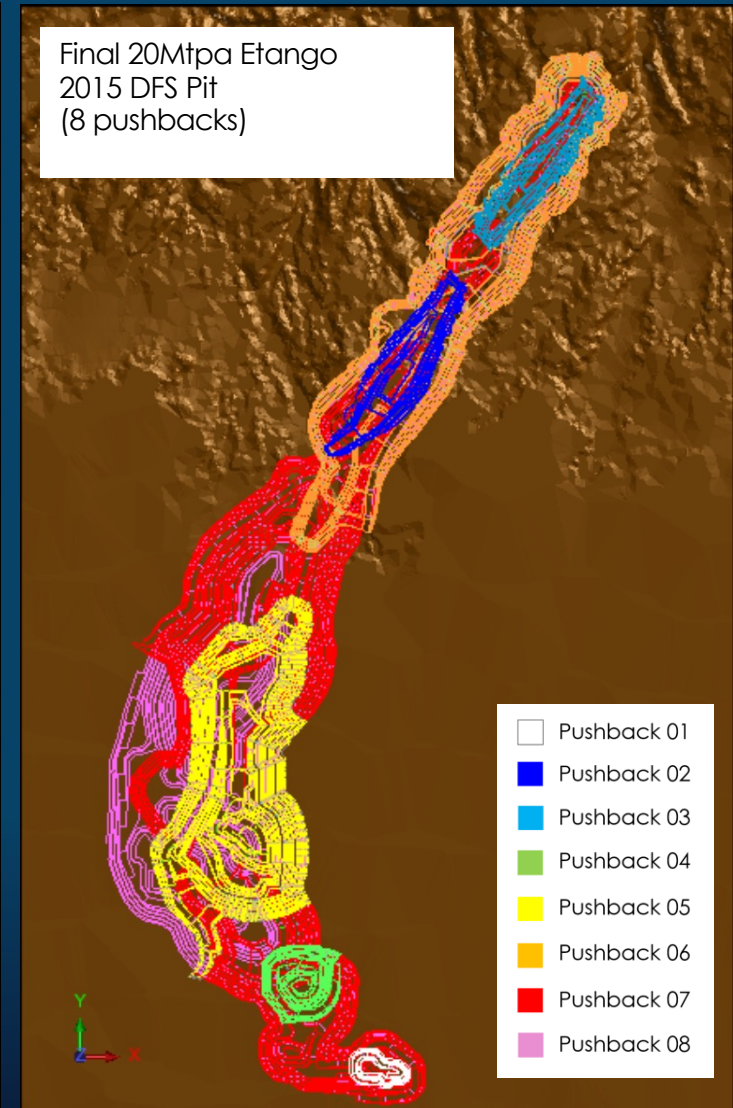
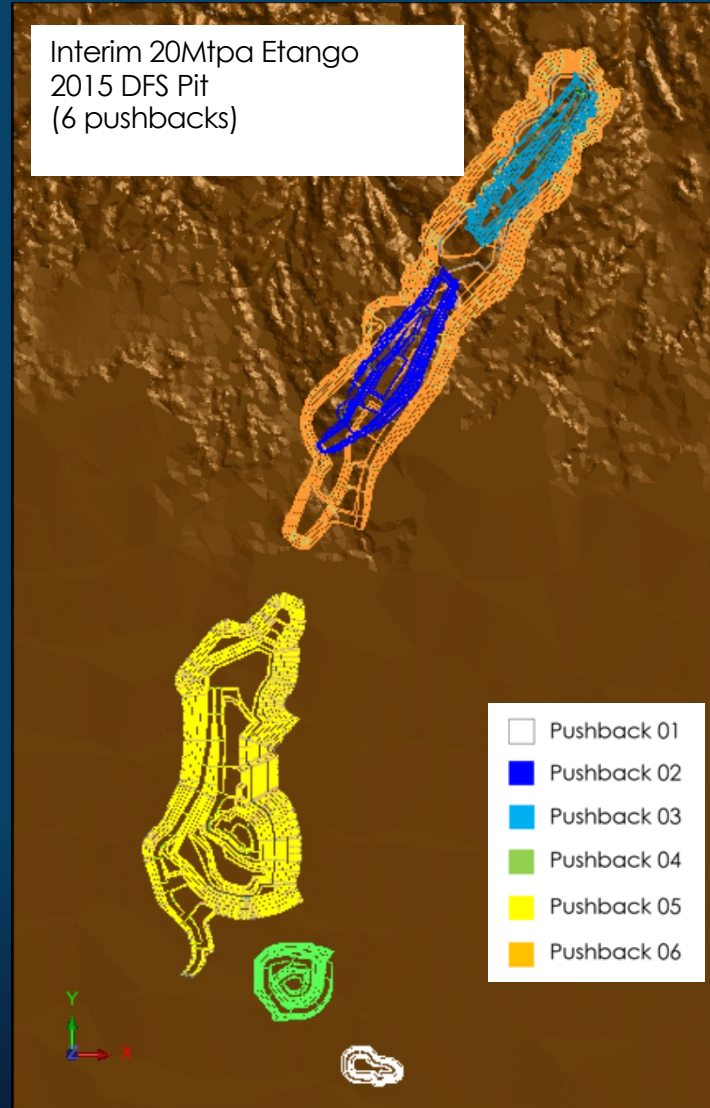
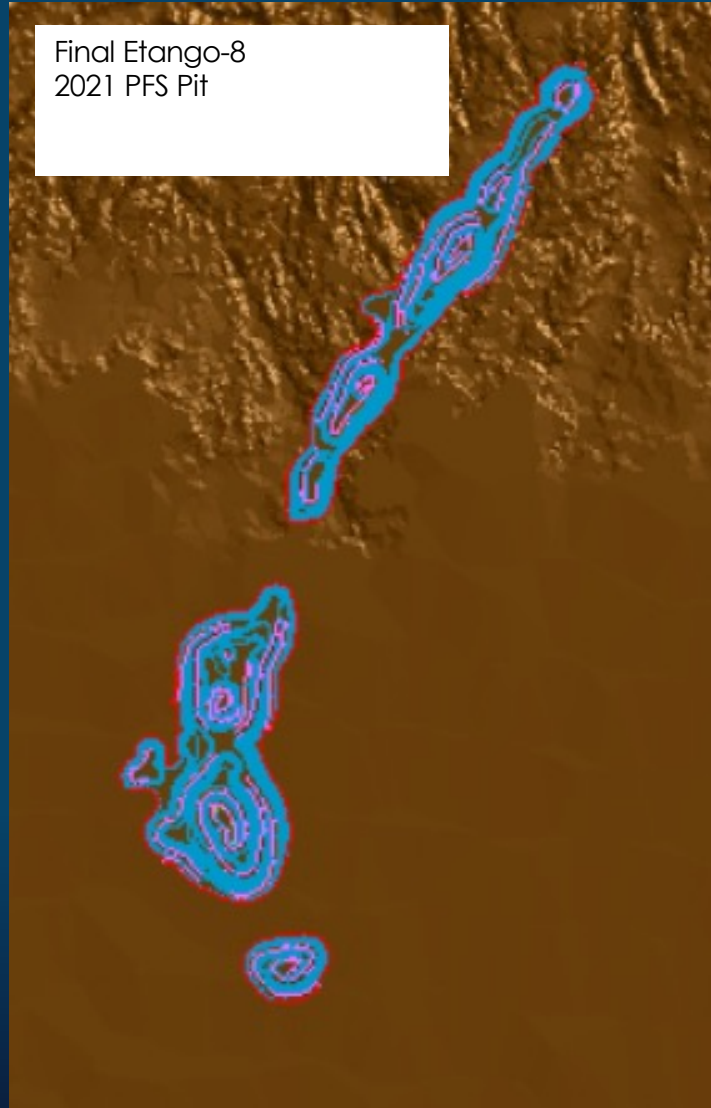




# Expandable

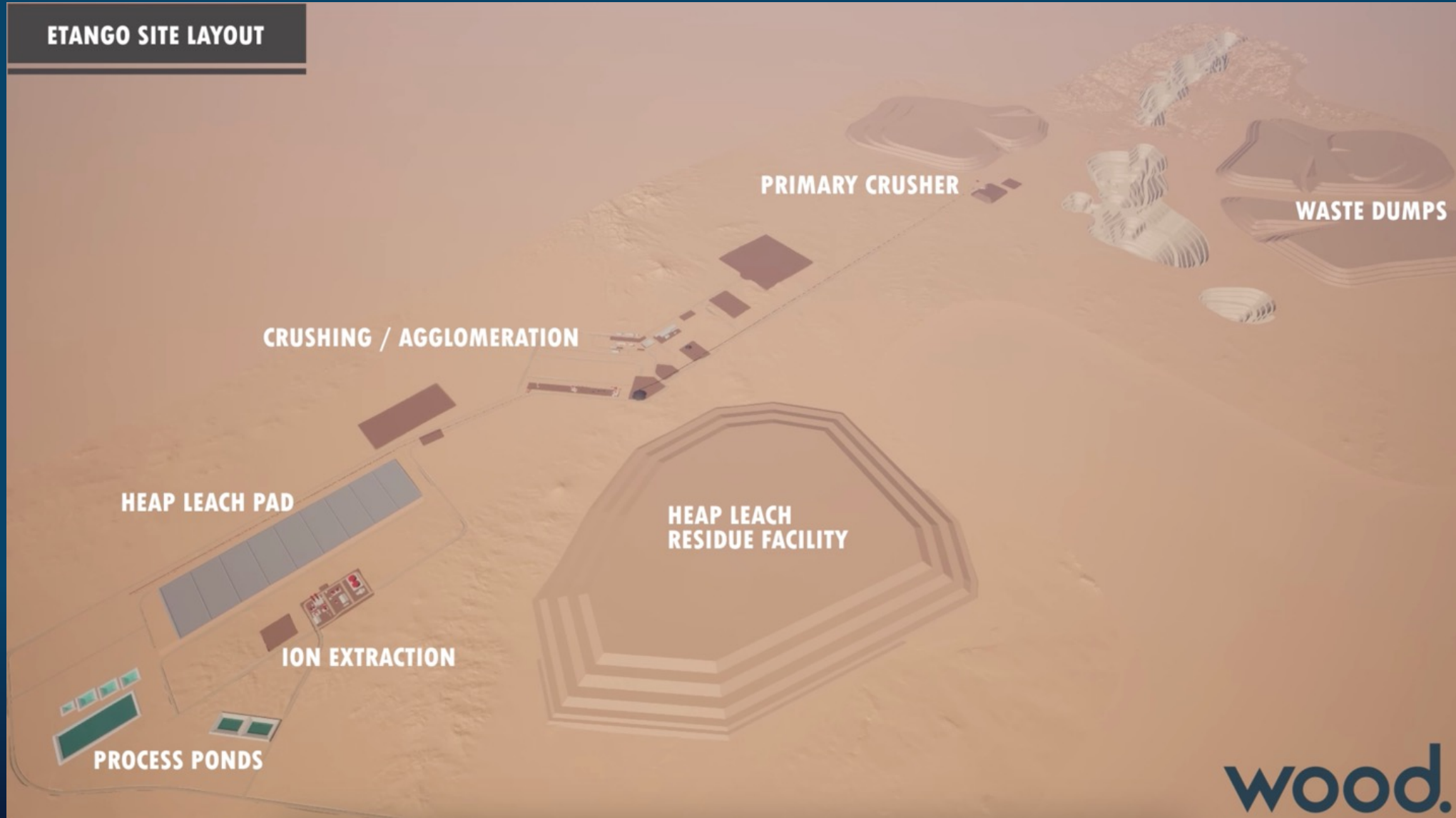
Up to 7.2 Mlbs per annum

# Comparison of pit shell (15 years)





# Layout and infrastructure







# Socially Responsible

We are changing lives in Namibia

LEADING THE NEXT GENERATION OF URANIUM PRODUCERS

# Recognition for our outstanding ESG credentials





ABOUT BANNERMAN ENERGY

**Social leadership in the supply of raw materials for  
emissions free power**



**BANNERMAN**  
energy

INVESTING IN  
**AFRICAN  
MINING**  
INDABA





# Strong ESG credentials built over 15 years

Environmental baseline  
monitoring since 2008

Environmental  
approvals granted for  
Etango mine

Peer reviewed, IFC  
compliant ESIA and  
management plans



# Early Learner Assistance program



6 Regions of  
Namibia



Launched in  
2011

Improve the rate of children  
dropping out of school, to  
ultimately keep them out of the  
poverty cycle.



15,000 kms  
travelled



School uniforms,  
shoes, backpacks  
& role models







We've  
impacted the  
life of 3,300  
children since  
2011....And we  
aren't even  
generating  
revenue yet

# Mining-Tourism partnership

Bannerman's partnership with the Namibian tourism sector has been cited internationally as a case study in exceptional community engagement

In the Erongo Region of Namibia, mining and tourism were adversaries, after years of mutual suspicion and fear

Our authentic engagement from 2006 culminated in:

- A partnership with the Hospitality Association of Namibia (HAN)
- Multiple sponsorships of tourism sector/events
- Investment in growing Namibia's inventory of attractions
- A "Mining and Tourism Synergies Workshop" that generated long term success stories
- Genuine trust between Bannerman and coastal tourism operators



In 2019, Werner Ewald (MD Namibia) was awarded ***HAN Tourism Personality of the Year.***

Bestowing this honour on a *mining executive* was an extraordinary acknowledgement of support.

"... Bannerman are the first Mine to support ANY Tourism related venture which is proof that Tourism and Mining can work together. CTAN was also acknowledged for being the Association who proved that it can work. I was and am VERY PROUD and want to THANK you and the Directors in investing in this Prestigious Event."

Merrilyn Leippert

Chair

Coastal Tourism Association of Namibia (CTAN)



"With your assistance and contribution, HAN was able to pull off one of its best Congresses and Gala events ever. Your video message came across extremely well and the message was powerful and impressive, thank you very, very much.

"We sincerely hope that we can maintain close relations between you as representative of the mining industry and the tourism industry to ensure that together we create an environment that is best for the long-term development of Namibia and its people."

Gitta Paetzold

CEO

Hospitality Association of Namibia

Testimonials from 2010



# One Economy Foundation



One Economy Foundation is a Namibian non-profit helping to build a bridge of economic opportunity between the dual economy. In 2017 Bannerman gifted OEF a 5% loan-carried shareholding in Etango.

In five years we have dramatically grown the value\* of OEF's 5% ownership of Etango

\* EV look-through basis



## Why partner with One Economy Foundation?

- ✓ Close alignment of OEF's community development programs and Bannerman's development philosophies
- ✓ OEF have a long-term perspective that aligns with our development pathway
- ✓ Sound understanding of Etango project and mining challenges – and therefore realistic expectations
- ✓ Loan carried ownership structure balances economic alignment with maintaining project financing attractiveness
- ✓ Future Etango cashflows can fund extensive capacity building, leveraging OEF's established and proven programs.



# Environmental leadership in the Namib desert



***“We found that Bannerman sets the highest environmental standards for all aspects of their operation. We applaud Bannerman for its openness and for setting an example.”***

Namibian Chamber of Environment

# Remaining steps to production

- ✓ Technical work complete (resource, mineralogy, metallurgy, processing, etc)
- ✓ Heap Leach demonstration plant operated between 2015-2019
- ✓ Environmental approvals in place
- ✓ Definitive Feasibility Study complete
- ✓ Front-End Engineering and Design (FEED) work underway
- ❑ Mining Licence approval – expected mid 2023
- ❑ Project financing and contracting/offtake workstreams
- ❑ Final Investment Decision (FID)

# Meeting tomorrow's key supply criteria

Globally significant output of 3.5 Mlbs pa with further expansion scalability

Robust economics and low hurdles to development

Environmental approvals with strong community and government support

Namibia a premier uranium mining jurisdiction with excellent infrastructure

Low technical risk through definitive study work and demonstration plant

Streamlined development path to meet forecast Uranium sector demand from 2026





Image courtesy Oklo Inc

# CONTACT

Brandon Munro  
Chief Executive Officer

E: [info@bmnenergy.com](mailto:info@bmnenergy.com)

T: +61 8 9381 1436



@BannermanEnergy



@Brandon\_Munro

# Appendix A: Bannerman team

## Strong and experienced board

<b>Ronnie Beevor (Non-Executive Chairman)</b>	<ul style="list-style-type: none"> <li>40+ years' investment banking experience incl. head of Rothschild Australia.</li> <li>Extensive listed co experience including past director of successful gold-copper developer, Oxiana Ltd.</li> </ul>
<b>Mike Leech (Non Executive Director)</b>	<ul style="list-style-type: none"> <li>30+ years' mining industry experience, Rio Tinto.</li> <li>Deep Namibian uranium operating experience.</li> <li>Former roles include MD and CFO at Rössing Uranium.</li> <li>Former President of Namibian Chamber of Mines.</li> </ul>
<b>Alison Terry (Non Executive Director)</b>	<ul style="list-style-type: none"> <li>Experienced senior executive with a deep understanding of sustainability, ESG dynamics, legal &amp; corporate affairs and complexities of major operations</li> <li>Former Director Sustainability &amp; Corporate Affairs at Fortescue Metals Group</li> </ul>
<b>Clive Jones (Non Executive Director)</b>	<ul style="list-style-type: none"> <li>30+ years in mineral exploration and founding/developing/transacting ASX companies.</li> <li>One of the original vendors of Etango project to BMN.</li> </ul>
<b>Ian Burvill (Non Executive Director)</b>	<ul style="list-style-type: none"> <li>35+ years' mining industry experience starting as a process plant engineer.</li> <li>Former partner of Resource Capital Funds.</li> </ul>
<b>Twapewa Kadhikwa (NED - Namibia)</b>	<ul style="list-style-type: none"> <li>High-profile Namibian businesswoman.</li> <li>Respected SME advisor to government.</li> <li>Speaker and business mentor.</li> </ul>

## Skilled management with Namibian expertise

<b>Brandon Munro (CEO &amp; Managing Director)</b>	<ul style="list-style-type: none"> <li>20+ years' transactional and financing experience as a corporate lawyer and resources executive.</li> <li>Member of World Nuclear Association Advisory Panel, former Chair of WNA Nuclear Fuel Demand Working Group.</li> <li>Lived in Namibia for 5+ years</li> </ul>
<b>Werner Ewald (Managing Director – Namibia)</b>	<ul style="list-style-type: none"> <li>30+ years' experience in uranium, diamond, coal mining</li> <li>Prior to joining BMN was Manager Mining at Rössing Uranium.</li> <li>Namibian born Electrical Engineer based in Swakopmund.</li> </ul>
<b>Steve Herlihy (Chief Financial Officer)</b>	<ul style="list-style-type: none"> <li>30+ years' experience as chartered accountant in resources</li> <li>Previously global Financial Controller for BHP Iron Ore and member of BHP's strategy and innovation leadership team.</li> <li>Deep commercial, M&amp;A, project finance experience.</li> </ul>
<b>Gavin Chamberlain (Chief Operating Officer)</b>	<ul style="list-style-type: none"> <li>30+ years in project development/construction, contracting</li> <li>Former Regional Director, Mining for AMEC (now Wood plc) and COO of Kore Potash.</li> <li>Project Director for construction of Husab uranium mine</li> </ul>
<b>Norman Green (Chair, Technical Steering Committee)</b>	<ul style="list-style-type: none"> <li>40+ years' experience, building resources projects in Southern Africa.</li> <li>Led development of, for example, Husab uranium mine (Namibia) and Skorpion zinc mine/refinery (Namibia).</li> <li>Based in Windhoek.</li> </ul>
<b>John Turney (Project Adviser – Etango)</b>	<ul style="list-style-type: none"> <li>40+ years in major mining/engineering companies, including Project Director of Bannerman.</li> <li>Led development of, for example, Cowal gold mine (Australia) and Tulawaka gold (Tanzania).</li> </ul>