

# Quarterly Report

21 April 2023



**Great Western**  
EXPLORATION

## Quarterly Activities Report for the Quarter ended 31 March 2023

### Summary

- Large Ultrafine+ soil anomalism (3.7km x 450m) defined at the Firebird Project, sharing similarities with gold deposits in the region, with work within higher tenor zones defined in the broader zone prioritised.
- Geological interpretation of magnetic data at the Firebird Project has found that higher tenor anomalism has a clear affinity with subtle magnetism and likely to streamline target generation and potentially accelerate a significant discovery.
- All approvals are in place for Aircore/Slimline RC at Firebird, which will test the extensive (3.7km x 450m) Ultrafine Soil anomaly at the project once access is possible after significant rain in the Wiluna area.
- Interpretation of Helicopter-borne electromagnetic (EM) data was completed at the Fairbairn Nickel-Copper Project, with seven compelling nickel-copper targets defined adjacent to magnetic highs prospective for magmatic nickel-copper deposits, obscured by shallow sedimentary basin cover.
- An infill passive seismic survey was recently completed at the Company's Lake Way Potash Project, which adjoins SO4's Lakeway Potash Project, to further define the continuation of the paleochannel containing high-grade potash brine levels.
- Angus Target within the Atley North Project defined as a large Ultrafine+ soil anomaly (950m x 450m) with bedrock obscured by colluvium cover, presenting a prospective blind potentially Archean Greenstone Target.
- Assay results were returned from the Harris' Find Phase 2 RC programme within the Yandal West Project, with predominately narrow low-grade results returned.
- On 30 March 2023, the Company announced a placement of ~\$2.8 mil of ~70 mil shares at 4 cents each. The Placement ensures that Great Western is fully funded for its exploration programmes.

Great Western Exploration Limited (ASX: GTE) ("the Company", "Great Western") is pleased to provide its Quarterly Activities Report for the Quarter ended 31 March 2023 (March 2023 Quarter).



GREAT WESTERN EXPLORATION LIMITED (ASX:GTE)  
Level 2, 160 St Georges Terrace, Perth WA

**Great Western**  
EXPLORATION

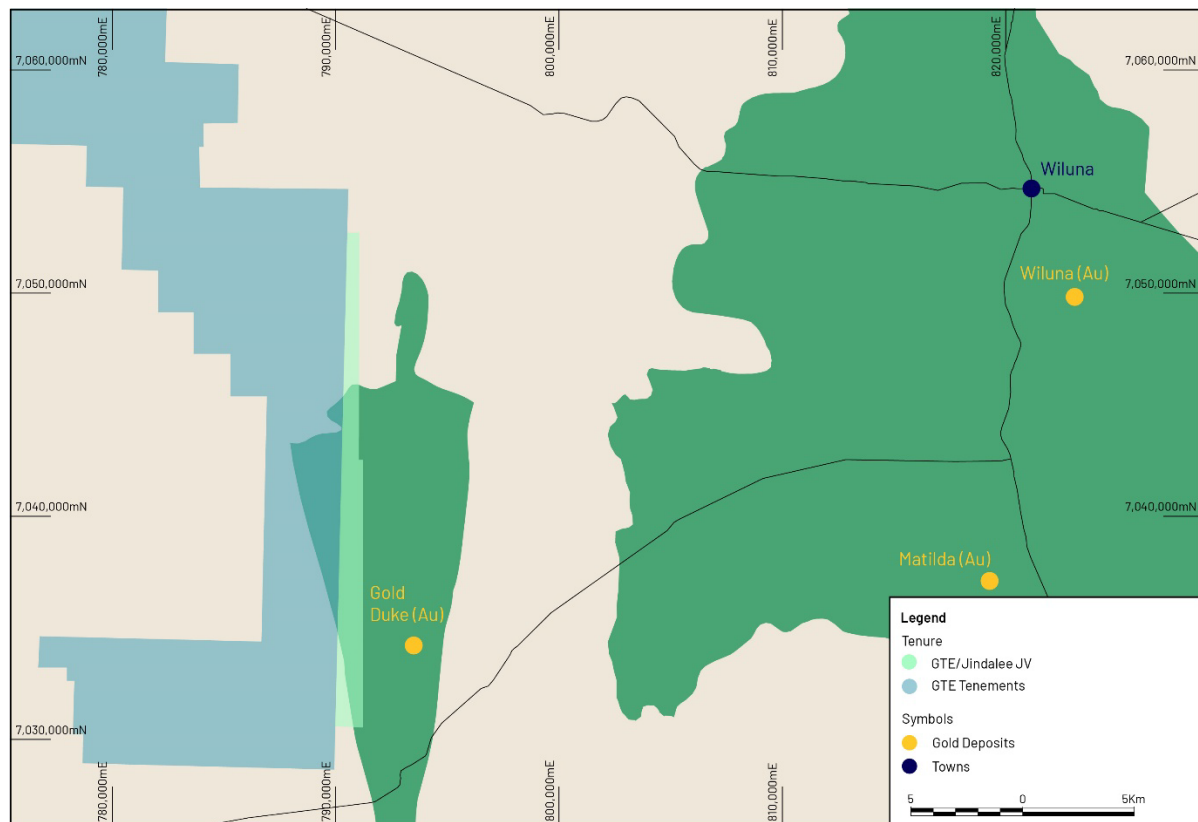
P + 61 8 6311 2852 F +61 8 6313 3997 W [greatwestern.net.au](http://greatwestern.net.au) ABN 53 123 631 470

Page 1

# Firebird Gold Project

GTE 100% (E53/1894, E53/2027) and GTE Earning up to 80% (E53/2129)

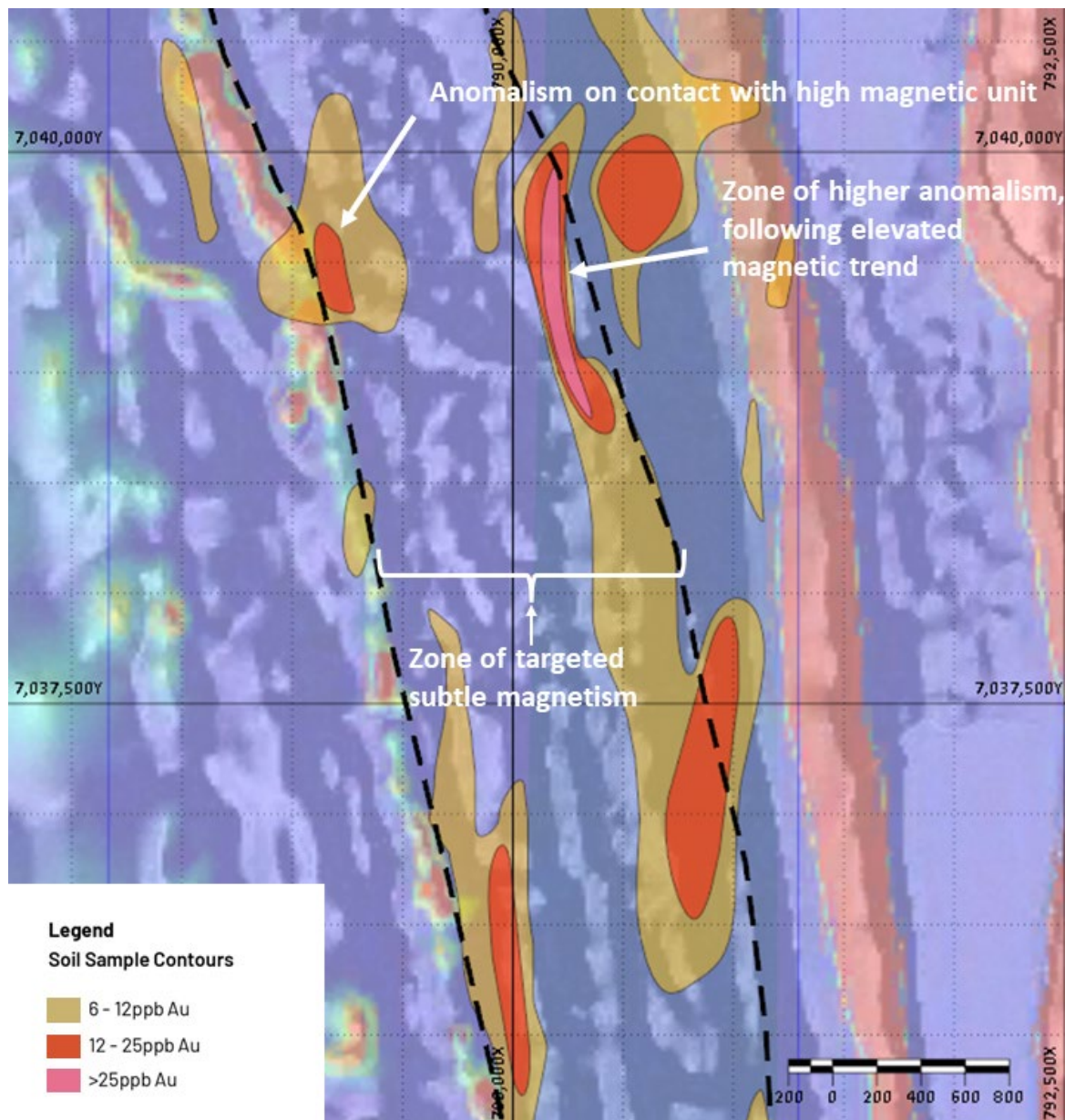
The Firebird Gold Project is located within the Youanmi Greenstone Belt, and 2.5km west of Western Gold's Gold Duke Project, which contains several Mineral Resources reported to JORC 2012 standard (Figure 1). The Firebird Gold Project is comprised of 100% owned GTE ground and the adjacent Joyner's Project JV, a joint venture held by Jindalee Resources where Great Western can earn 80%.



**Figure 1: Location of the Firebird Project in relation to Western Gold's Project.**

The Project contains a broad Ultrafine+ soil gold anomalous zones of 3.7km x 450m wide (GTE ASX Announcement 12 January 2023), indicative of a large zone of mineralisation previously untested. Importantly, the anomalism follows a north-west trend, consistent with government geological mapping of the Youanmi Greenstone Terrain. The Company interprets that mineralisation is potentially preferentially hosted by a unit/s within this greenstone sequence. Interpretation of magnetic and gravity data found gold anomalism aligned with discrete magnetic trends, potentially indicative of an individual volcanic rock unit within the greenstone package. Significantly this unit may be preferentially gold mineralised, with a higher tenor zone within the broad anomalism aligning well with this subtle elevated zone of magnetism, shown in Figure 2.

The Company interprets the anomalism to be coincident with the subtle magnetic trends and this will significantly enhance exploration targeting and potentially fast track a new gold discovery.



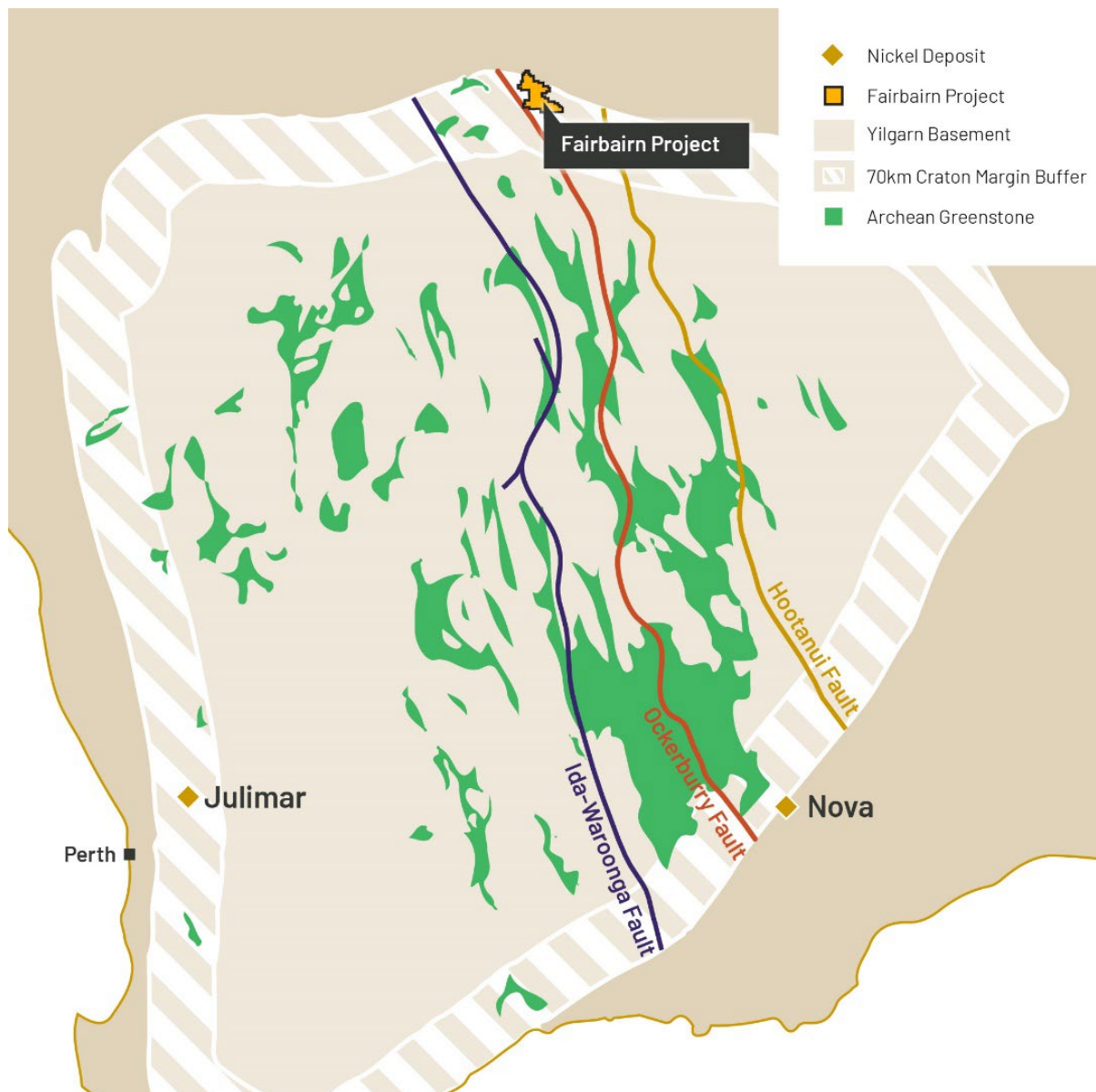
**Figure 2: Ultrafine soil anomalism on first vertical derivative magnetic image. Targeted subtle magnetic zone highlighted by black dotted lines.**

Great Western has prioritised Aircore/Slimline RC drill testing for this compelling project, with drill dates to be advised.

## Fairbairn Nickel-Copper Project

GTE 100% (E69/3443)

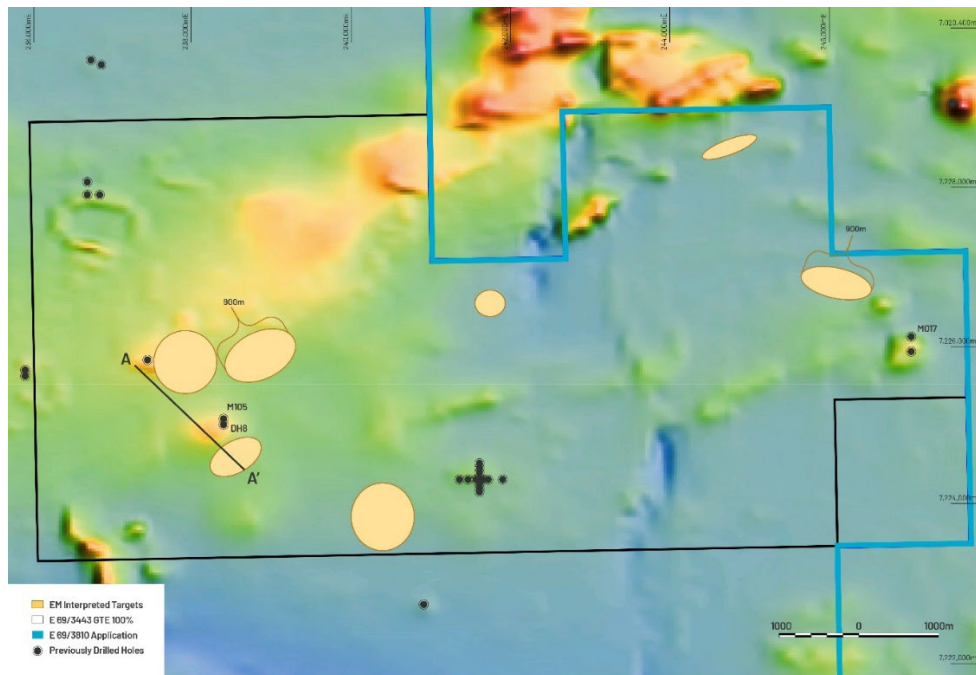
The Fairbairn Nickel-Copper Project is located 900km north-east of Perth, on the northern margin of the Yilgarn Craton and within the Earraheedy Basin. The Yilgarn Craton margin is highly prospective for base metal deposits, and host to both the Julimar and Nova Deposits (Figure 3). Little previous exploration has been completed at Fairbairn, with work completed during the 1980s and early-1990s focussed on diamond exploration rather than magmatic nickel-copper style mineralisation.



**Figure 3: Location of the Fairbairn Base Metal Project on the margin of the Yilgarn Craton, and the interpreted “mantle tapping” Ockerburry Fault, a potential conduit for metal deposit formation.**

A helicopter-borne electromagnetic (EM) survey was completed in January 2023 at the project (GTE ASX Announcement 11 February 2023<sup>1</sup>), with the aim of delineating magmatic nickel-copper targets. Interpretation of this data identified seven targets, defining plates with significant lateral extents, measuring up to 900m along the plate’s length (Figure 3). The plates sit below the government mapped and modelled sedimentary rocks of Earahedy Basin, with basement interpreted to be mafic and ultramafic rocks of Archean Greenstone Terrain, prospective for magmatic nickel-copper deposits.

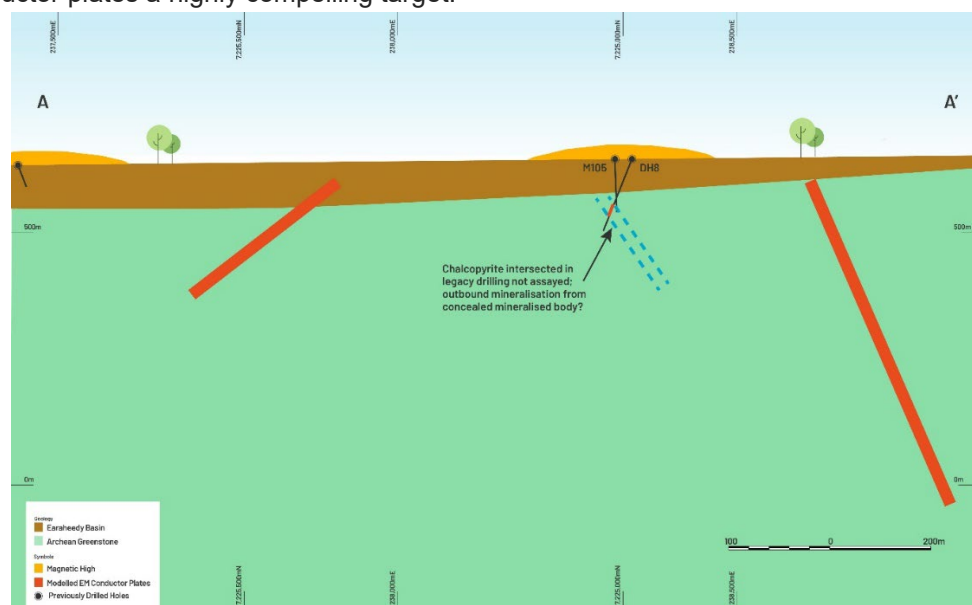




**Figure 4: Location of interpreted plates from the helicopter-borne EM Survey in yellow, overlaid on reduced to pole magnetic data. Note location of previously drilled holes M017, M105, and DH8, in relation to the newly defined targets.**

The magnetic highs shown in Figure 4 supports a greenstone basement interpretation, and legacy drilling completed in the 1990s intersected mafic and ultramafic rocks below basin cover. This drilling returned previously reported anomalous results of 20m @ 1,214ppm Ni from 28m (M017), from the limited suite of elements assayed at the time (GTE ASX Announcement 21 March 2022).

Review of government open file data found 1990s drilled holes M105 and DH8 (Figure 5) intersected ultramafic rocks with quartz-calcite veins and copper-sulphide mineralisation (described as chalcopyrite - DH8), adjacent to two modelled EM plates; no assays are available for this interval. These drilled intercepts potentially represent distal mineralisation from a mineralised source, making the modelled EM conductor plates a highly compelling target.



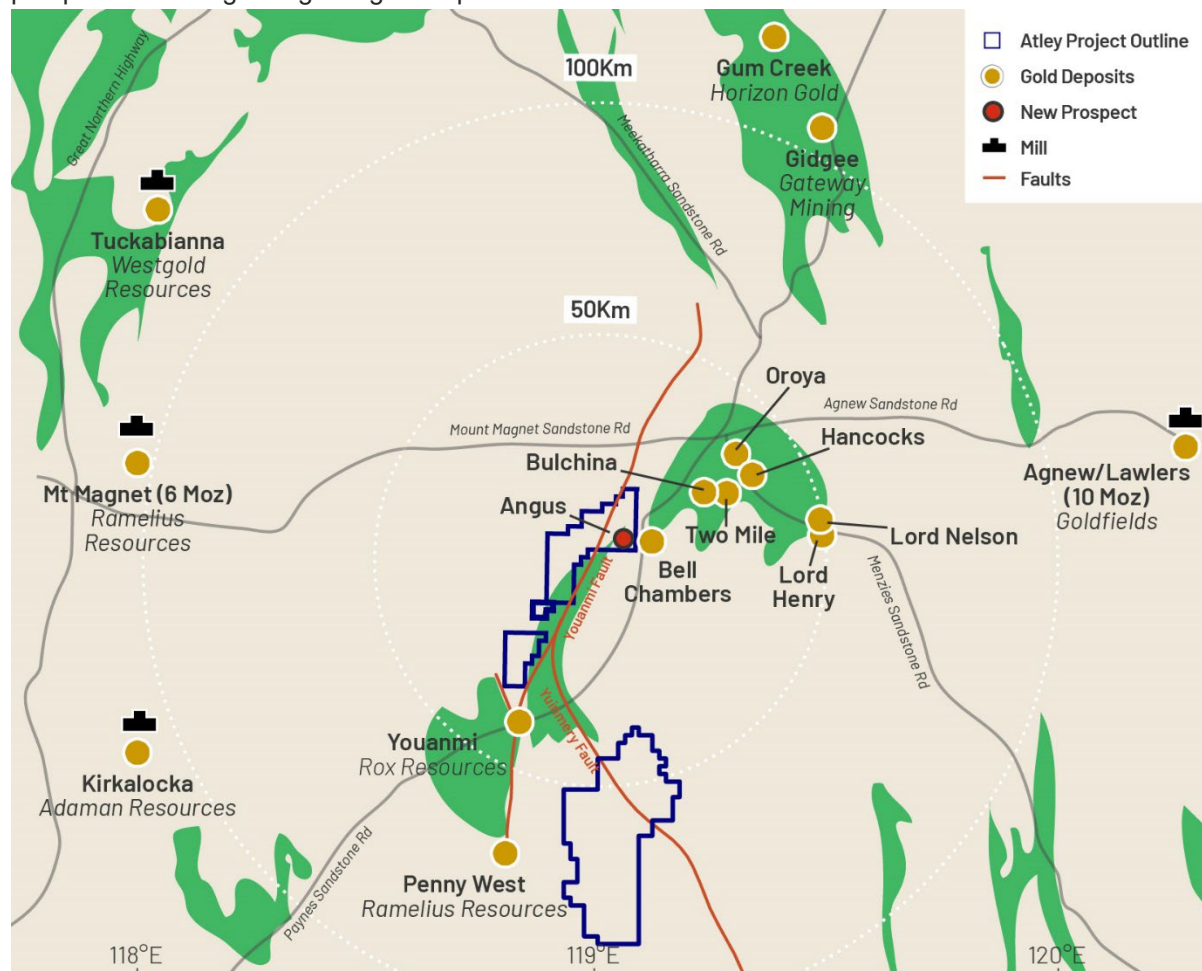
**Figure 5: Cross Section (A-A', refer Figure 2) showing modelled EM plates and 1990s legacy drilling where copper-sulphide mineralisation was described.**

Great Western has prioritised further exploration on this project, which will include field inspections and ground electromagnetic surveys, to precisely delineate the interpreted EM conductor plates for targeted drill testing.

## Atley North Project

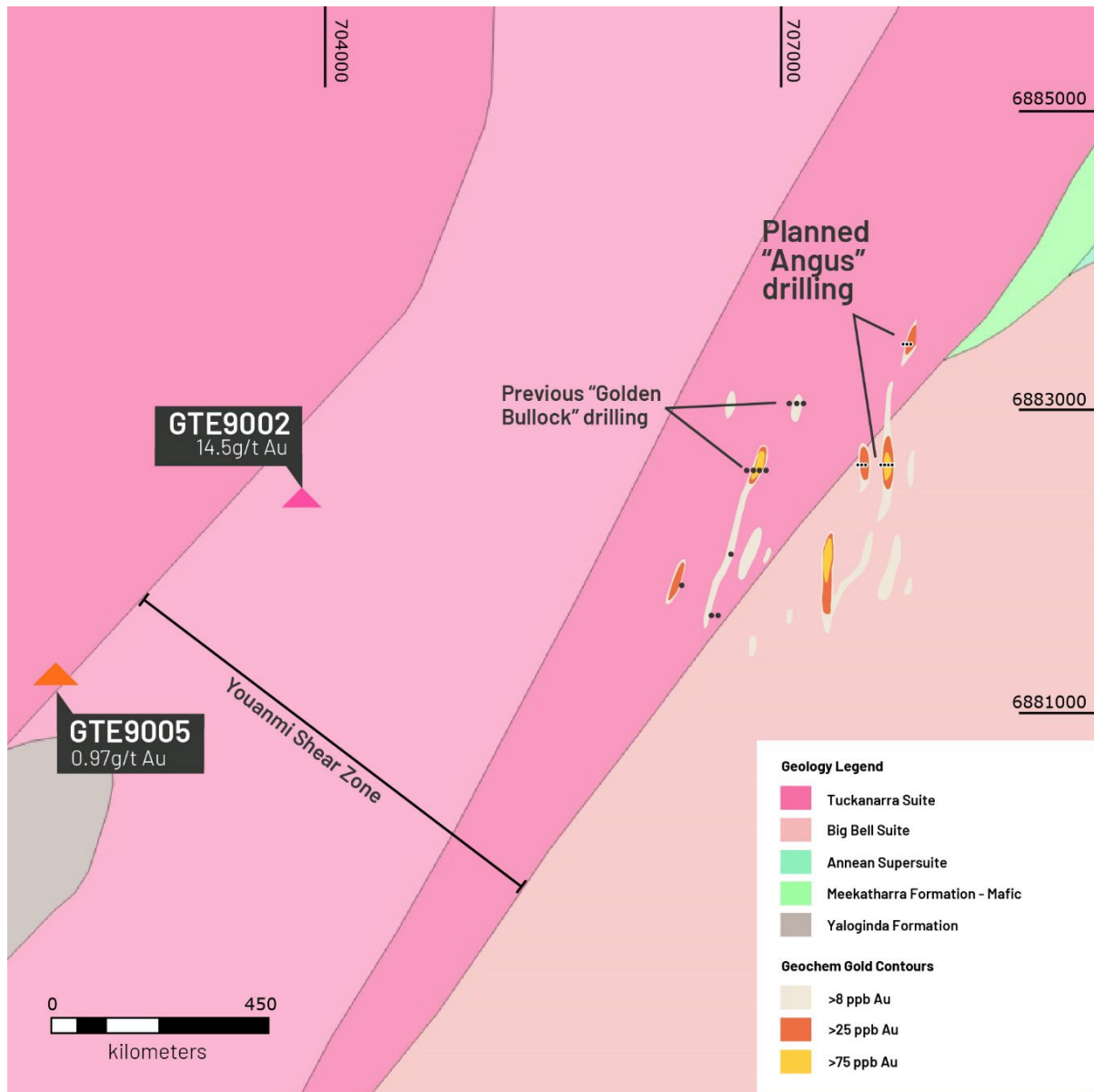
GTE 100% (E57/1130)

The Atley North Project is located along the Youanmi Shear, host to nearby gold deposits such as Youanmi (Rox Resources) and Penny West (Ramelius Resources), shown in Figure 6. The Angus Target within this project is a large Ultrafine+ soil anomaly, with extents of 950m x 450m (Figure 7). Government bedrock mapping interprets Archean granitoids at this location; however, bedrock is obscured by transported cover, which potentially conceals Archean Greenstone units, which are prospective for large orogenic gold deposits.



**Figure 6: Location of the Atley North Project in proximity to nearby gold mines.**

A reverse circulation (RC) drilling programme is planned to test the large 950m x 450m Ultrafine+ soil anomalism at the Angus Target, shown in Figure 7. The anomalous contours are sub-parallel with faulting of the Youanmi Shear Zone, with drilling designed to test the anomalies below shallow colluvial cover.



**Figure 7: Atley North Project: anomalous soil contours, planned drilling, and float sample locations.**

## Yerrida North Joint Venture

(Sandfire Resources ASX:SFR earning 70%)

Exploration completed and funded during the quarter by Sandfire Resources (ASX:SFR) included data processing of a 2,177-line km Airborne gravity and gradiometry (AGG) survey, undertaken in late-December 2022 by Xcalibur with a Falcon Airborne Gravity Gradiometer. Interpretation of this data and derived gravity image is shown in Figure 8 and was completed by Peter Kovac (an industry expert in AGG interpretation) and Sandfire Resources' geologists. Rock-chip sampling was undertaken on prospective targets generated from this interpretation, with a total of 81 samples taken and results expected in the final quarter of FY23 (Figure 9).

Soil sample results were returned from three prospects: Northern Anomaly, F8 Flank, and F5 West, with no significant results returned (Figure 10). A small number of elevated copper results were returned and were attributed to mafic units at the samples location, that record high background copper values.



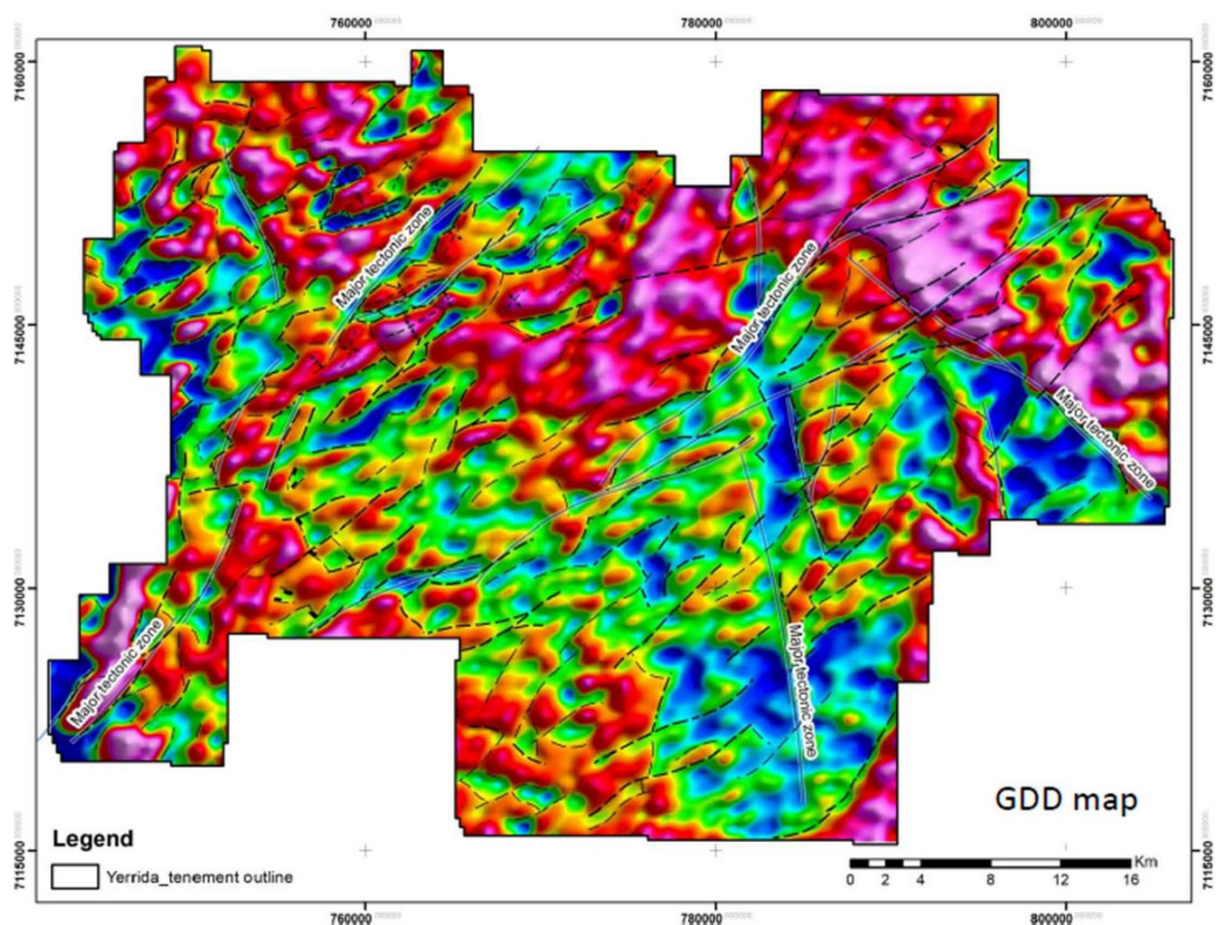


Figure 8: Airborne gravity and gradiometry with interpreted major tectonic zones.

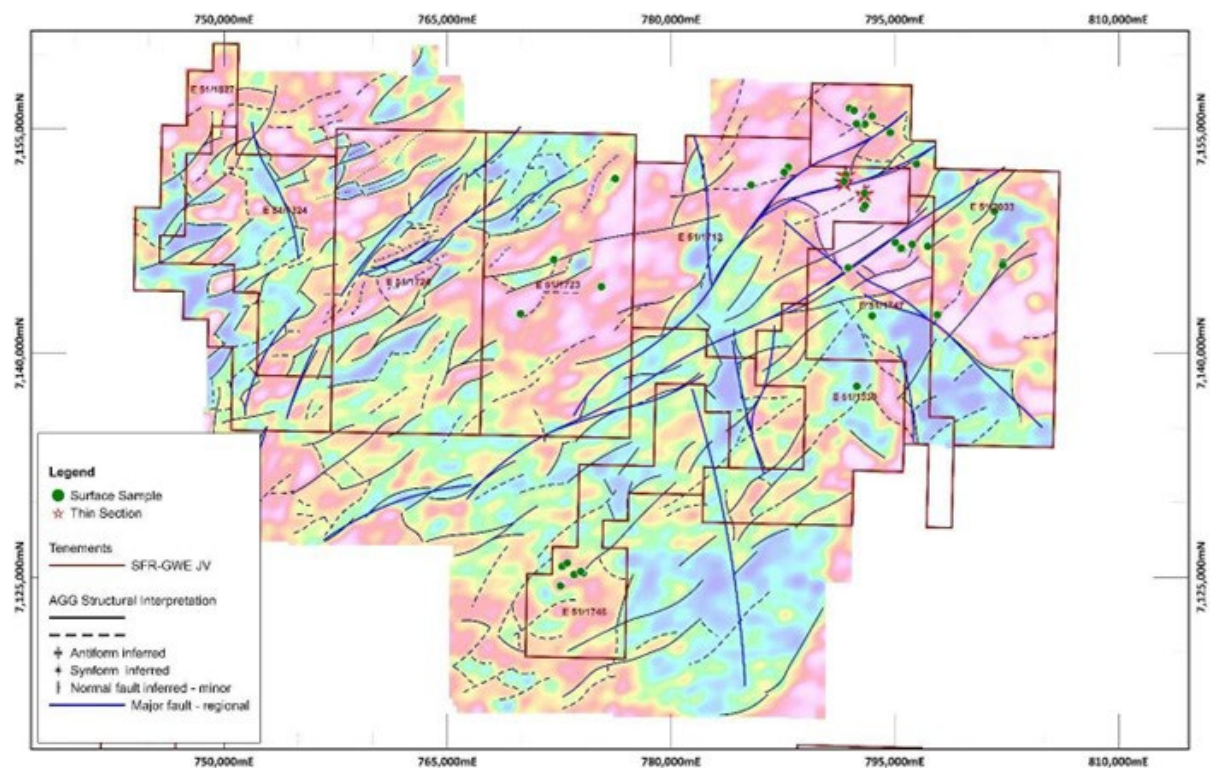
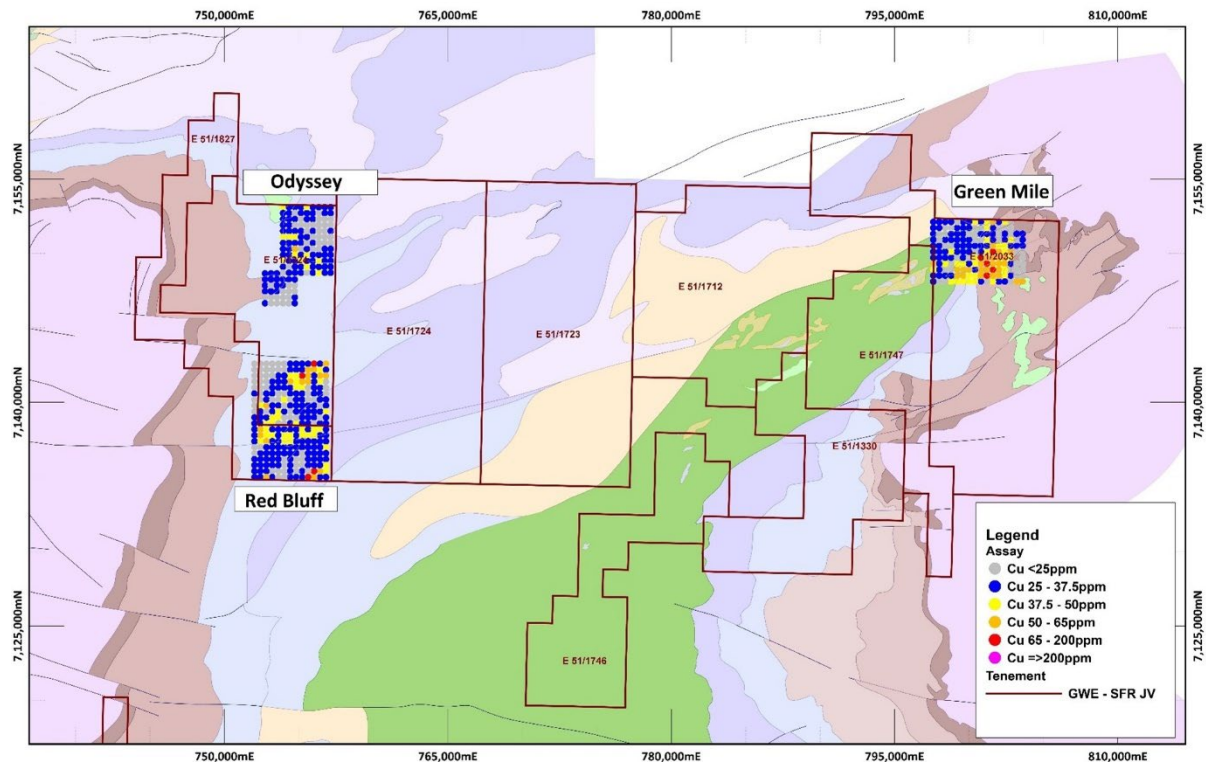


Figure 9: Rock-chip sample location overlaid on airborne gravity gradiometry image.





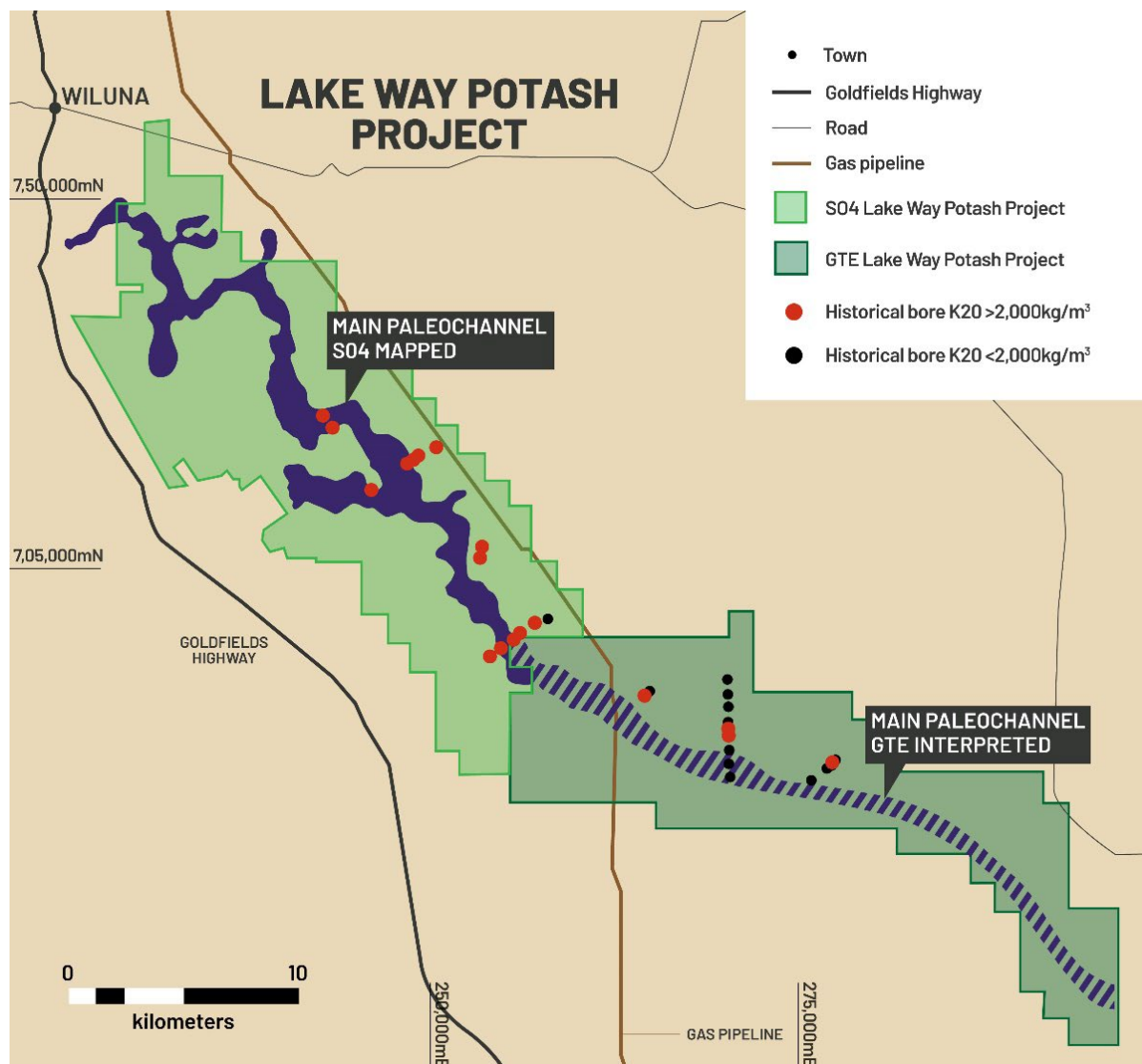
**Figure 10:** Soil sample results for copper returned for the March 2023 Quarter.

Additional geological and structural mapping will now be undertaken by Sandfire Resources for basin modelling and target generation for volcanic hosted massive sulphide and sediment hosted copper deposits, with potential drilling of generated targets planned in the second half of 2023.

## Lake Way Potash Project

GTE 100% (E53/1949, E53/2017, E53/2026, E53/2146, E53/2206)

Great Western's Lake Way Potash Project is immediately adjacent to SO4's Potash Project, approximately 30km south-east from Wiluna. SO4's Lakeway Potash Project resource is contained within lake sediments and a single paleochannel that continue into Great Western's tenure (Figure 11). A passive seismic survey was completed to better define the paleochannel for future drill testing. The Company will release results of this survey once data and interpretation of the data has been completed.



**Figure 11:** Interpreted continuation of SO4's Lakeway high grade potash basal channel into GTE's Lake Way Potash Project (GTE ASX Announcement 1 July 2021).

## Yandal West Project

GTE 80% (E53/1612)

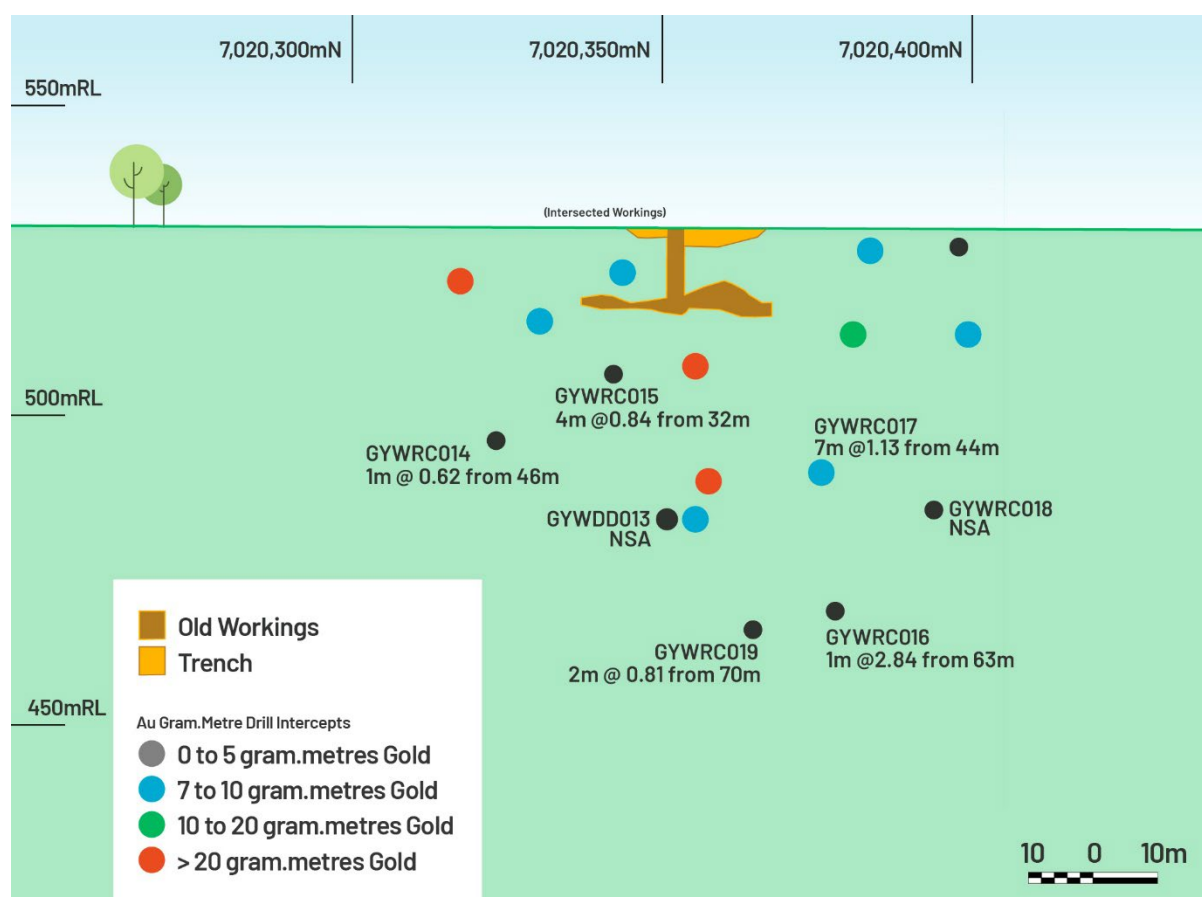
The Yandal West Project is located within the world class Yandal Greenstone Belt, approximately 55km north of the Bronzewing Gold Mine and 60km south of the Jundee Gold Mine. The Phase 2 Drill programme was completed at Harris' Find in January 2023, which aimed to extend high-grade mineralisation below and along strike of previously announced significant legacy drill intercepts at this location (GTE ASX Announcement 31 January 2023), which included 7m @ 4.3g/t from 27m. Results from the drilling programme were received, shown in Figure 12, Figure 13, and Table 1.

**Table 1: Harris' Find Phase 2 RC drilling results from the targeted Harris Find Structure (see Appendix 1 for further details)**

Drill hole	Drill Type	From	To	Drill Intercept
GYWDD013	DD	55.2	56	NSA
GYWRC014	RC	46	47	1m @ 0.6 g/t Au
GYWRC015	RC	32	36	4m @ 0.84g/t Au
GYWRC016	RC	63	64	1m @ 2.84 g/t Au
GYWRC017	RC	44	51	7m @ 1.13g/t Au
<b>Including</b>		<b>48</b>	<b>59</b>	<b>1m @ 3.16g/t Au</b>
GYWRC018	RC	55	58	NSA
GYWRC019	RC	70	72	2m @ 0.81g/t

NSA: No significant Assay

All drilled holes intersected the targeted mineralised structure; with predominately narrow low-grade results received from these intervals.



**Figure 12: Harris' Find longitudinal section, with previously reported drill intercepts displayed, coloured by gold grams x drilled metres, and results of the Phase 2 RC drilling programme.**

While the latest drill results have downgraded Harris' Find, the structure is open 3km to the north from Harris' Find along the Barwidgee Fault, with previously reported anomalous RAB drilling results and high-grade rock-chips along strike (GTE ASX Announcement 15 September 2022<sup>2</sup>). Re-ranking of the project alongside other projects/targets within the Company's portfolio will be undertaken.





Figure 13: Plan section of reported drill-hole results positions.

## Fieldwork Summary

Great Western is currently progressing several field work programmes across areas of the Company's substantial tenure that it expects will result in drill ready targets. This work includes:

- Soil sampling at a number of areas considered prospective for copper, nickel and/or gold;
- Aircore/Slimline RC drill testing of the extensive soil anomaly at the Firebird Project;
- Ground electromagnetic (EM) survey to be completed at the Fairbairn Nickel-Copper Project, focused on the targets generated from the Airborne EM survey, once access is possible after the significant rainfall event in the area;
- Surface sampling and drill targeting to be completed at the Yerrida North Joint Venture by Sandfire Resources; and
- Golden Corridor diamond drilling programme, testing gold in soil anomalies and modelled basement targets (refer ASX announcement 25 September 2022), with dates to be advised.

Great Western looks forward to keeping the market updated and providing results of the exploration programmes in due course.

## Corporate

### Placement announced on 30 March 2023

On 30 March 2023, the Company announced a fund raising of approximately \$2.8 million (before costs) by way of a two-tranche placement of approximately 70 million ordinary shares at an issue price of \$0.04 per share ("Placement") to professional and sophisticated investors. The Placement ensures that Great Western is fully funded for its exploration programs. Tranche 1, raising \$1.81 million, was completed on 6 April 2023.

Euroz Hartleys Limited and Peloton Capital acted as Joint Lead Managers for the Placement. Great Western directors are participating in Tranche 2 of the Placement which is expected to be completed following shareholder approval at the General Meeting to be held on 16 May 2023.

### ASX Additional Information

- ASX Listing Rule 5.3.1: Exploration & Evaluation Expenditure during the March 2023 Quarter was \$1,065,000. Full details of exploration activity during the March 2023 Quarter are in this report.
- ASX Listing Rule 5.3.2: There were no substantive mining production and development activities during the March 2023 Quarter.
- ASX Listing Rule 5.3.5: Payments to related parties of the Company and their associates during the March 2023 Quarter: \$98,000 in aggregate is for Managing Director's salary only as per the remuneration package disclosed in the 2022 Annual Report.

**Authorised for release** by the board of directors of Great Western Exploration Limited.

Tony Walsh

Company Secretary

Great Western Exploration Limited

Tel: 08 6311 2852

Email: [enquiries@greatwestex.com.au](mailto:enquiries@greatwestex.com.au)

### Competent Person Statement

*The information in this report that relates to Exploration Results, Mineral Resources or Ore Reserves is based on information compiled by Mr. Shane Pike who is a member of the Australian Institute of Mining and Metallurgy. Mr. Pike is an employee of Great Western Exploration Limited and has sufficient experience which is relevant to the style of mineralisation and type of deposit under consideration and to the activity which he is undertaking to qualify as a Competent Person as defined in the 2012 Edition of the 'Australasian Code for Reporting of Exploration Results, Mineral Resources and Ore Reserves'. Mr. Pike consents to the inclusion in the report of the matters based on his information in the form and context in which it appears.*

*The information in this report that relates to the Company's Exploration Results is a compilation of Results previously released to ASX by Great Western Exploration (23 August 2021, 3 March 2022, 21 March 2022, 31 August 2022, 15 September 2022, and 12 January 2023) Mr. Shane Pike consents to the inclusion of these Results in this report. Mr. Pike has advised that this consent remains in place for subsequent releases by the Company of the same information in the same form and context, until the consent is withdrawn or replaced by a subsequent report and accompanying consent. The Company confirms that it is not aware of any new information or data that materially affects the information included in the original market announcements and that all material assumptions and technical parameters in the market announcements continue to apply and have not materially changed. The Company confirms that the form and context in which the Competent Person's findings are presented have not been materially modified from the original market announcements.*

## Appendix 1: Tenement Schedule at 31 March 2023

Project	Tenement	Status	Holder	Ownership	Comments
Atley	E 57/1130	Live	Great Western Exploration Limited	100%	
Atley	E 57/1131	Live	Great Western Exploration Limited	100%	
Atley	E 57/1160	Live	Great Western Exploration Limited	100%	
Atley	E 57/1161	Live	Great Western Exploration Limited	100%	
Atley	E 57/1162	Live	Great Western Exploration Limited	100%	
Atley	E 57/1164	Live	Great Western Exploration Limited	100%	
Atley	E 57/1165	Live	Great Western Exploration Limited	100%	
Atley	E 57/1166	Live	Great Western Exploration Limited	100%	
Atley	E 57/1204	Live	Great Western Exploration Limited	100%	
Fairbairn	E 69/3443	Live	Vanguard Exploration Ltd	100%	100% Owned Subsidiary
Fairbairn	E 69/3810	Pending	Great Western Exploration Limited	100%	
Fairbairn	E 69/3899	Live	Great Western Exploration Limited	100%	
Fairbairn	E 69/3903	Pending	Great Western Exploration Limited	100%	
Fairbairn	E 69/3906	Live	Great Western Exploration Limited	100%	
Fairbairn	E 69/4065	Pending	Great Western Exploration Limited	100%	Reapplication of E 69/3903
Forrestania South	E 74/603	Live	Western Areas Ltd	10%	Free Carried To PFS
Firebird	E 53/2129	Live	Jindalee Resources Limited	0%	JV with Jindalee Resource Ltd, GTE Earning 80%
Golden Corridor	E 51/1855	Live	Great Western Exploration Limited	100%	
Golden Corridor	E 51/2046	Live	Great Western Exploration Limited	100%	
Golden Corridor	E51/2010	Live	Great Western Exploration Limited	90%	Westex Resources Free Carried to BFS
Golden Corridor	E 53/1983	Live	Great Western Exploration Limited	100%	
Golden Corridor	E 53/2124	Live	Great Western Exploration Limited	100%	
Golden Corridor	E 53/2138	Live	Great Western Exploration Limited	100%	
Golden Corridor	E 53/2139	Live	Great Western Exploration Limited	100%	
Golden Corridor	E 53/2141	Live	Great Western Exploration Limited	100%	
Golden Corridor	E 53/2142	Live	Great Western Exploration Limited	100%	
Lake Way Potash	E 53/1949	Live	Great Western Exploration Limited	100%	
Lake Way Potash	E 53/2017	Live	Great Western Exploration Limited	100%	
Lake Way Potash	E 53/2026	Live	Great Western Exploration Limited	100%	
Lake Way Potash	E 53/2146	Live	Great Western Exploration Limited	100%	
Yandal West	E 53/1369	Live	Vanguard Exploration Ltd	100%	100% Owned Subsidiary
Yandal West	E 53/1612	Live	Diversified Asset Holdings Pty Ltd	80%	Diversified Free Carried To BFS,
Yandal West	E 53/1816	Live	Diversified Asset Holdings Pty Ltd	80%	Diversified Free Carried To BFS



Project	Tenement	Status	Holder	Ownership	Comments
Yandal West	E 53/2206	Pending	Great Western Exploration Limited	100%	Competing Application, second drawn in ballot
Copper Ridge	E 51/1727	Live	Great Western Exploration Limited	100%	
Copper Ridge	E 51/1734	Live	Great Western Exploration Limited	100%	
Copper Ridge	E 51/1856	Live	Great Western Exploration Limited	100%	
Copper Ridge	E 53/1894	Live	Great Western Exploration Limited	100%	
Copper Ridge	E53/2156	Live	Great Western Exploration Limited	100%	
Yerrida South	E 51/1732	Live	Great Western Exploration Limited	100%	
Yerrida South	E 51/1733	Live	Great Western Exploration Limited	100%	
Yerrida South	E 51/1993	Live	Great Western Exploration Limited	100	
Yerrida South	E51/2062	Live	Great Western Exploration Limited	100%	
Yerrida South	E51/2063	Live	Great Western Exploration Limited	100%	
Yerrida South	E 53/2027	Live	Great Western Exploration Limited	100%	
Yerrida South	E 53/2077	Live	Great Western Exploration Limited	100%	
Yerrida South	E 53/2196	Live	Great Western Exploration Limited	100%	
Yerrida South	E 51/2078	Live	Great Western Exploration Limited	100%	
Yerrida North	E 51/2127	Pending	Great Western Exploration Limited	100%	
Yerrida North	E 51/2128	Pending	Great Western Exploration Limited	100%	
Yerrida North	E 51/2129	Pending	Great Western Exploration Limited	100%	
Calyerup	E 70/6032	Live	Great Western Exploration Limited	100%	
Weld Spring	E 69/4021	Pending	Great Western Exploration Limited	100%	
Weld Spring	E 69/4022	Pending	Great Western Exploration Limited	100%	
Weld Spring	E 69/4023	Pending	Great Western Exploration Limited	100%	
Weld Spring	E 69/4024	Pending	Great Western Exploration Limited	100%	
Weld Spring	E 69/4025	Pending	Great Western Exploration Limited	100%	
Weld Spring	E 69/4026	Pending	Great Western Exploration Limited	100%	
Weld Spring	E 69/4027	Pending	Great Western Exploration Limited	100%	
<b>Joint Venture with Sandfire Resources Limited (1)</b>					
Yerrida North JV	E 51/1324	Live	Great Western Exploration Limited	100%	Sandfire Earning 70%
Yerrida North JV	E 51/1330	Live	Great Western Exploration Limited	100%	Sandfire Earning 70%
Yerrida North JV	E 51/1560	Live	Great Western Exploration Limited	100%	Sandfire Earning 70%
Yerrida North JV	E 51/1712	Live	Great Western Exploration Limited	100%	Sandfire Earning 70%
Yerrida North JV	E 51/1723	Live	Great Western Exploration Limited	100%	Sandfire Earning 70%
Yerrida North JV	E 51/1724	Live	Great Western Exploration Limited	100%	Sandfire Earning 70%

Project	Tenement	Status	Holder	Ownership	Comments
Yerrida North JV	E 51/1728	Live	Great Western Exploration Limited	100%	Sandfire Earning 70%
Yerrida North JV	E 51/1746	Live	Great Western Exploration Limited	100%	Sandfire Earning 70%
Yerrida North JV	E 51/1747	Live	Great Western Exploration Limited	100%	Sandfire Earning 70%
Yerrida North JV	E 51/1819	Live	Great Western Exploration Limited	100%	Sandfire Earning 70%
Yerrida North JV	E 51/1827	Live	Great Western Exploration Limited	100%	Sandfire Earning 70%
Yerrida North JV	E 51/2033	Live	Great Western Exploration Limited	100%	Sandfire Earning 70%
Yerrida North JV	E 51/2068	Live	Great Western Exploration Limited	100%	Sandfire Earning 70%
Project	Tenement	Status	Holder	Ownership	Comments
Atley	E 57/1130	Live	Great Western Exploration Limited	100%	
Atley	E 57/1131	Live	Great Western Exploration Limited	100%	
Atley	E 57/1160	Live	Great Western Exploration Limited	100%	
Atley	E 57/1161	Live	Great Western Exploration Limited	100%	
Atley	E 57/1162	Live	Great Western Exploration Limited	100%	
Atley	E 57/1164	Live	Great Western Exploration Limited	100%	
Atley	E 57/1165	Live	Great Western Exploration Limited	100%	
Atley	E 57/1166	Live	Great Western Exploration Limited	100%	
Atley	E 57/1204	Live	Great Western Exploration Limited	100%	
Fairbairn	E 69/3443	Live	Vanguard Exploration Ltd	100%	100% Owned Subsidiary
Fairbairn	E 69/3810	Pending	Great Western Exploration Limited	100%	
Fairbairn	E 69/3899	Live	Great Western Exploration Limited	100%	
Fairbairn	E 69/3903	Pending	Great Western Exploration Limited	100%	
Fairbairn	E 69/3906	Live	Great Western Exploration Limited	100%	
Fairbairn	E 69/4065	Pending	Great Western Exploration Limited	100%	Reapplication of E 69/3903
Forrestania South	E 74/603	Live	Western Areas Ltd	10%	Free Carried To PFS
Firebird	E 53/2129	Live	Jindalee Resources Limited	0%	JV with Jindalee Resource Ltd, GTE Earning 80%
Golden Corridor	E 51/1855	Live	Great Western Exploration Limited	100%	
Golden Corridor	E 51/2046	Live	Great Western Exploration Limited	100%	
Golden Corridor	E51/2010	Live	Great Western Exploration Limited	90%	Westex Resources Free Carried to BFS
Golden Corridor	E 53/1983	Live	Great Western Exploration Limited	100%	
Golden Corridor	E 53/2124	Live	Great Western Exploration Limited	100%	
Golden Corridor	E 53/2138	Live	Great Western Exploration Limited	100%	
Golden Corridor	E 53/2139	Live	Great Western Exploration Limited	100%	
Golden Corridor	E 53/2141	Live	Great Western Exploration Limited	100%	
Golden Corridor	E 53/2142	Live	Great Western Exploration Limited	100%	

Project	Tenement	Status	Holder	Ownership	Comments
Lake Way Potash	E 53/1949	Live	Great Western Exploration Limited	100%	
Lake Way Potash	E 53/2017	Live	Great Western Exploration Limited	100%	
Lake Way Potash	E 53/2026	Live	Great Western Exploration Limited	100%	
Lake Way Potash	E 53/2146	Live	Great Western Exploration Limited	100%	
Yandal West	E 53/1369	Live	Vanguard Exploration Ltd	100%	100% Owned Subsidiary, Extension of Term pending
Yandal West	E 53/1612	Live	Diversified Asset Holdings Pty Ltd	80%	Diversified Free Carried To BFS,
Yandal West	E 53/1816	Live	Diversified Asset Holdings Pty Ltd	80%	Diversified Free Carried To BFS
Yandal West	E 53/2206	Pending	Great Western Exploration Limited	100%	Competing Application, second drawn in ballot
Copper Ridge	E 51/1727	Live	Great Western Exploration Limited	100%	Extension of Term pending
Copper Ridge	E 51/1734	Live	Great Western Exploration Limited	100%	
Copper Ridge	E 51/1856	Live	Great Western Exploration Limited	100%	
Copper Ridge	E 53/1894	Live	Great Western Exploration Limited	100%	
Copper Ridge	E53/2156	Live	Great Western Exploration Limited	100%	
Yerrida South	E 51/1732	Live	Great Western Exploration Limited	100%	
Yerrida South	E 51/1733	Live	Great Western Exploration Limited	100%	
Yerrida South	E 51/1993	Live	Great Western Exploration Limited	100	
Yerrida South	E51/2062	Live	Great Western Exploration Limited	100%	
Yerrida South	E51/2063	Live	Great Western Exploration Limited	100%	
Yerrida South	E 53/2027	Live	Great Western Exploration Limited	100%	
Yerrida South	E 53/2077	Live	Great Western Exploration Limited	100%	
Yerrida South	E 53/2196	Live	Great Western Exploration Limited	100%	
Yerrida South	E 51/2078	Live	Great Western Exploration Limited	100%	
Yerrida North	E 51/2127	Pending	Great Western Exploration Limited	100%	
Yerrida North	E 51/2128	Pending	Great Western Exploration Limited	100%	
Yerrida North	E 51/2129	Pending	Great Western Exploration Limited	100%	
Calyerup	E 70/6032	Live	Great Western Exploration Limited	100%	
Weld Spring	E 69/4021	Pending	Great Western Exploration Limited	100%	
Weld Spring	E 69/4022	Pending	Great Western Exploration Limited	100%	
Weld Spring	E 69/4023	Pending	Great Western Exploration Limited	100%	
Weld Spring	E 69/4024	Pending	Great Western Exploration Limited	100%	
Weld Spring	E 69/4025	Pending	Great Western Exploration Limited	100%	
Weld Spring	E 69/4026	Pending	Great Western Exploration Limited	100%	
Weld Spring	E 69/4027	Pending	Great Western Exploration Limited	100%	



Project	Tenement	Status	Holder	Ownership	Comments
Joint Venture with Sandfire Resources Limited					
Yerrida North JV	E 51/1324	Live	Great Western Exploration Limited	100%	Sandfire Earning 70%, Extension of Term pending
Yerrida North JV	E 51/1330	Live	Great Western Exploration Limited	100%	Sandfire Earning 70%
Yerrida North JV	E 51/1560	Live	Great Western Exploration Limited	100%	Sandfire Earning 70%
Yerrida North JV	E 51/1712	Live	Great Western Exploration Limited	100%	Sandfire Earning 70%
Yerrida North JV	E 51/1723	Live	Great Western Exploration Limited	100%	Sandfire Earning 70%
Yerrida North JV	E 51/1724	Live	Great Western Exploration Limited	100%	Sandfire Earning 70%
Yerrida North JV	E 51/1728	Live	Great Western Exploration Limited	100%	Sandfire Earning 70%
Yerrida North JV	E 51/1746	Live	Great Western Exploration Limited	100%	Sandfire Earning 70%
Yerrida North JV	E 51/1747	Live	Great Western Exploration Limited	100%	Sandfire Earning 70%
Yerrida North JV	E 51/1819	Live	Great Western Exploration Limited	100%	Sandfire Earning 70%
Yerrida North JV	E 51/1827	Live	Great Western Exploration Limited	100%	Sandfire Earning 70%, Extension of Term pending
Yerrida North JV	E 51/2033	Live	Great Western Exploration Limited	100%	Sandfire Earning 70%
Yerrida North JV	E 51/2068	Live	Great Western Exploration Limited	100%	Sandfire Earning 70%