



Perth, 28 April 2023

ASX Limited
20 Bridge St
SYDNEY NSW 2000
AUSTRALIA

CORRECTED QUARTERLY ACTIVITIES AND CASHFLOW REPORT FOR THE QUARTER ENDED 31 MARCH 2023

Please find attached corrected Quarterly Activities and Cashflow Report for the quarter ended 31 March 2023 replacing the Quarterly Activities and Cashflow Report lodged earlier today.

The corrected report amends the due date for the Loan Facility and the Credit Standby Arrangements disclosed in section 7.6 of the "*Appendix 5B, Mining exploration entity or oil and gas exploration entity quarterly cash flow report*" from **30 September 2023** to **31 March 2024**.

31 March 2024 is the correct due date for these liabilities, as previously reported in Note 10 to the Financial Statements in "*Korab Resources Interim Financial Report*" which was released to the market on 15 March 2023.

Yours sincerely

Andrej K Karpinski, FAICD, FFin
KORAB RESOURCES LIMITED
EXECUTIVE CHAIRMAN



KORAB RESOURCES LIMITED

KORAB HOUSE

www.korab.com.au

Issued Capital

Issued Shares: 367 Mln
Last Price: 2.7 cents
Capitalisation: \$10 Mln

Listing Code

ASX: KOR

Directors

Andrej K. Karpinski
Executive Chairman
Executive Director

Anthony G. Wills
Non-executive Director
(Independent)

Alicja Karpinski
Non-executive Director

Projects

Winchester
(Rum Jungle, NT)
Magnesium

Sundance
(Rum Jungle, NT)
Gold, Silver, Tin

Batchelor & G. Alligator
(Rum Jungle, NT)
Gold, Silver, Zinc, Lead, Nickel,
Copper, Cobalt, Tin, Rare Earth
Oxides, Scandium, Lithium,
Manganese, Iron Ore, Uranium

Geolsec
(Rum Jungle, NT)
Phosphate
Rare Earth Oxides
Uranium
(Sub-leased to third party)

Mt. Elephant
(Ashburton, WA)
Gold, Copper

Bobrikovo
(Luhansk, UKRAINE)
Gold, Silver, Zinc, Lead,
Antimony

28 April 2023

QUARTERLY ACTIVITIES REPORT TO 31 MARCH 2023

This is quarterly activities report for the period from 1 January 2023 to 31 March 2023 ("Report") by Korab Resources Ltd ("Korab", or "Company") (ASX: KOR) and its subsidiaries ("Korab Group").

OPERATIONS – EXPLORATION, EVALUATION, AND DEVELOPMENT

During the quarter Korab Group continued exploration and evaluation of its mineral assets, as well as the progression of the Winchester Magnesium Deposit to production.

During and following the quarter, the Company continued a scoping study into production of magnesium metal using alternative technology which does not use gas, ferrosilicon, aluminium, and grid electricity. During and following the end of the quarter Korab also continued updates of previously reported pre-feasibility studies. The results of the scoping study and updates of the pre-feasibility studies are expected to be reported to the market in 2023.

During and following the end of the quarter, the Company continued review of the lithium and Rare Earth Oxides (REO) potential of the Batchelor/Green Alligator Project, which was originally announced to the ASX on 12 September 2022. The review was commenced due to the Project's proximity to lithium-rich and REO-rich granites, Project's proximity to Finnis Lithium Project, Litchfield Lithium Project, and Bynoe Project, as well as Project's favourable geology similar to the geology of the projects held in the area by Core Lithium (ASX: CXO), Ragusa Minerals (ASX: RAS), Lithium Plus Minerals (ASX: LPM), and Evergreen Lithium (ASX: EG1). REO potential of the Batchelor/Green Alligator Project stems from the Project's proximity to REO-rich granites (as reported by the Northern Territory Geological Survey (NTGS)) and favourable geology (see Figure 4). Results of the lithium and REO review of the Batchelor/Green Alligator Project will be reported progressively as they become available with initial results expected to be reported in early May 2023.

WINCHESTER MAGNESIUM PROJECT (RUM JUNGLE MINERAL FIELD, NT)

SCOPING STUDY AND UPDATE OF PRE-FEASIBILITY STUDIES

During and following end of the quarter Korab continued a scoping study which is evaluating economics of an environmentally friendly production method to produce sustainable, "zero-carbon", "green" magnesium metal together with several additional sellable "bonus" products.

The production method being evaluated as part of this second scoping study does not utilise aluminium and ferrosilicon but instead relies on the more modern technologies developed in recent years. This production method aims to avoid calcination of magnesite (converting $MgCO_3$ into $MgO + CO_2$). This in turn would remove the need to use gas and would eliminate CO_2 emissions that would otherwise result from calcination and gas burning.

As part of this scoping study, the Company is assessing the use of two solar farms (Batchelor 1, and Batchelor 2) adjacent to the Winchester Project (see Figure 11) that have a combined capacity of 22MW-24MW to supply renewable electric power to the Project (crushers, screens, sorters and process plant).

Grid electricity, ferrosilicon, aluminium and gas contribute significantly to the cost of production forming approximately 76% of the cost base (see Figure 10). The cost of solar power is significantly lower than the grid electricity. Consequently, a method which dispenses with ferrosilicon, aluminium and gas, and allows for the use of solar power instead of grid electricity has a potential to reduce the production cost



20 PROWSE STREET, WEST PERTH, WA, 6005, AUSTRALIA
PO BOX 1958, WEST PERTH, WA, 6872, AUSTRALIA
TEL (08) 9474 6166 FAX (08) 9322 6333
ACN 082 140 252





KORAB RESOURCES LIMITED

KORAB HOUSE

www.korab.com.au

Issued Capital

Issued Shares: 367 Mln
Last Price: 2.7 cents
Capitalisation: \$10 Mln

Listing Code

ASX: KOR

Directors

Andrej K. Karpinski
Executive Chairman
Executive Director

Anthony G. Wills
Non-executive Director
(Independent)

Alicja Karpinski
Non-executive Director

Projects

Winchester
(Rum Jungle, NT)
Magnesium

Sundance
(Rum Jungle, NT)
Gold, Silver, Tin

Batchelor & G. Alligator
(Rum Jungle, NT)
Gold, Silver, Zinc, Lead, Nickel,
Copper, Cobalt, Tin, Rare Earth
Oxides, Scandium, Lithium,
Manganese, Iron Ore, Uranium

Geolsec
(Rum Jungle, NT)
Phosphate
Rare Earth Oxides
Uranium
(Sub-leased to third party)

Mt. Elephant
(Ashburton, WA)
Gold, Copper

Bobrikovo
(Luhansk, UKRAINE)
Gold, Silver, Zinc, Lead,
Antimony

of magnesium metal. The work on this study assessing the economics of producing “zero-carbon”, “green” magnesium metal using the alternative method is continuing. Results of this study are expected to be available for release to the market in 2023.

During the prior reporting periods, on 9 March 2022, Korab reported in a report titled “*Winchester Magnesium Scoping Study*” the results of a scoping study which assessed the economics of a tested and proven magnesium production method relying on electric arc furnace which uses as feed magnesium oxide, aluminium, and ferrosilicon to produce magnesium metal (the Study). The Study has shown that the Winchester Project is capable of producing 50,000 tonnes of magnesium metal per year for 14 years at a cost of between A\$5,300 and A\$5,400 per tonne. For the composition of the production cost components by input category see Figure 10. The Company confirms that all the material assumptions underpinning the production target and other scoping study results initially reported to the public on 9 March 2022 continue to apply and have not materially changed. The Company further confirms that all the material assumptions underpinning the forecast financial information derived from a production target in the initial public report released on 9 March 2022 continue to apply and have not materially changed.

The “*Winchester Magnesium Scoping Study*” report can be downloaded directly from the ASX website by either following the link below or by cutting and pasting this link into your browser:

https://cdn-api.markitdigital.com/apiman-gateway/ASX/asx-research/1.0/file/2924-02497261-6A1080972?access_token=83ff96335c2d45a094df02a206a39ff4

During the quarter, Korab Group continued an update of the previously reported pre-feasibility studies:

1. The pre-feasibility study into the production and sales of DSO magnesium carbonate rock (magnesite) from Winchester quarry, which was originally reported to the market on 21 March 2018;
2. The pre-feasibility study into the processing and sales of magnesium oxides (Caustic Calcined Magnesia and Dead Burned Magnesia), which was originally reported to the market on 12 September 2018; and
3. The pre-feasibility study into the sales of waste products from Winchester, which was originally reported to the market on 5 April 2019.

These updated pre-feasibility studies will form the basis for the selection of the general development strategy for the Winchester Magnesium Project. One of the scenarios being evaluated for the Winchester development is a 3-stage development of Winchester, where:

Stage 1 Korab Group would initially develop quarrying and sales of magnesium carbonate DSO product;

Stage 2 After the Winchester magnesium carbonate (magnesite) quarry became fully operational and a sufficient amount of suitable raw material was stockpiled, Korab Group would expand Winchester into production of various magnesium oxides (Dead Burned Magnesia, and Caustic Calcined Magnesia) using kilns owned and operated by third parties on a toll-treatment basis;

Stage 3 Finally, after implementation of Stage 1 and Stage 2, and subject to future:

1. Financial position of Korab Group;
2. Funding sources available to the Company;
3. Legislative framework (including any new legislation relating to climate change and/or emissions reduction goals); and
4. Market conditions;

Korab Group would proceed to construct own kilns and other facilities to enable in-house production of magnesium oxides and magnesium metal.



20 PROWSE STREET, WEST PERTH, WA, 6005, AUSTRALIA
PO BOX 1958, WEST PERTH, WA, 6872, AUSTRALIA
TEL (08) 9474 6166 FAX (08) 9322 6333
ACN 082 140 252





KORAB RESOURCES LIMITED

KORAB HOUSE

www.korab.com.au

Issued Capital

Issued Shares: 367 Mln

Last Price: 2.7 cents

Capitalisation: \$10 Mln

Listing Code

ASX: KOR

Directors

Andrej K. Karpinski

Executive Chairman
Executive Director

Anthony G. Wills

Non-executive Director
(Independent)

Alicja Karpinski

Non-executive Director

Projects

Winchester

(Rum Jungle, NT)

Magnesium

Sundance

(Rum Jungle, NT)

Gold, Silver, Tin

Batchelor & G. Alligator

(Rum Jungle, NT)

Gold, Silver, Zinc, Lead, Nickel,
Copper, Cobalt, Tin, Rare Earth
Oxides, Scandium, Lithium,
Manganese, Iron Ore, Uranium

Geolsec

(Rum Jungle, NT)

Phosphate
Rare Earth Oxides
Uranium
(Sub-leased to third party)

Mt. Elephant

(Ashburton, WA)

Gold, Copper

Bobrikovo

(Luhansk, UKRAINE)

Gold, Silver, Zinc, Lead,
Antimony

DISCUSSIONS REGARDING POTENTIAL JOINT VENTURES, OFFTAKES, AND FUNDING

During prior reporting period, on 2 May 2022, Korab Group received a Letter of Intent (LOI) from Speira GmbH (Speira) regarding supply of magnesium metal from the Winchester Magnesium Project to Speira.

Speira is a leading global manufacturer of advanced rolled aluminium/magnesium products, producing approximately one million tonnes of aluminium alloys per year. Speira supplies some of the best-known global companies in the automotive, packaging, printing, engineering, building and construction industries.

Speira's production base, with locations across Germany and Norway, includes JV Alunorf, the world's largest plant for casting and rolling of aluminium, and Grevenbroich, the world's largest rolled aluminium finishing mill. Speira employs around 5,000 people mainly in Germany and Norway. Speira closely collaborates with their value chain partners to better understand and improve the lifecycle effects of their aluminium products. The LOI confirmed Speira's interest (on a non-binding basis) in negotiating the procurement of various magnesium products to be used in production of aluminium/magnesium alloys subject to:

1. Korab Group commencing production of primary magnesium metal from Winchester Project;
2. Korab Group meeting Speira's quality and sustainability standards; and
3. Speira and Korab agreeing the commercial terms.

The LOI acknowledged Speira's appreciation of Korab's efforts to develop the Winchester Magnesium Project as a sustainable primary magnesium source to the market and Korab's approach to build a business model integrating the most innovative production technologies, recycling, and renewable electricity generation.

Discussions with Speira are incomplete and confidential. No commercial terms have been agreed between the parties and there can be no certainty that an agreement can be reached. Accordingly, no investment decision should be made on the basis of this information.

During the prior quarters, Korab Group has been approached by unrelated parties with an unsolicited proposal to enter into an agreement to jointly develop the Winchester quarry where the other party will fully fund the development in exchange for sharing the future profits from the quarry. No commercial terms have been agreed between the parties. There can be no certainty that any agreement or agreements can be reached with the other party or that any transaction will eventuate. Accordingly, no investment decision should be made on the basis of this information.

During the prior reporting periods Korab received unsolicited approaches from two separate Japanese conglomerates regarding potential supply of DSO magnesium carbonate rock from Winchester Project. During the prior quarter, one of these parties has sent a representative to meet with Korab directors and to visit the Winchester Magnesium Project and the port of Darwin. The Company is actively engaged in negotiations and discussions with the interested potential buyers but thus far no commercial terms have been agreed between Korab and these parties. There can be no certainty that any agreement or agreements can be reached with either of these parties or that any transaction will eventuate. Accordingly, no investment decision should be made on the basis of this information. During and following the quarter Korab also continued discussions with other potential buyers of magnesium carbonate rock (DSO) and of various magnesium oxides.

During the quarter, Korab continued discussions with various magnesium metal users and magnesium buyers, including aluminium/magnesium alloy producers supplying all major car makers (including Fiat and Daimler) regarding potential supply of magnesium metal from Winchester. No commercial terms have been agreed between the parties. There can be no certainty that any agreement or agreements can be reached with the other party or that any transaction will eventuate. Accordingly, no investment decision should be made on the basis of this information. As the discussions mentioned above are at



20 PROWSE STREET, WEST PERTH, WA, 6005, AUSTRALIA
PO BOX 1958, WEST PERTH, WA, 6872, AUSTRALIA
TEL (08) 9474 6166 FAX (08) 9322 6333
ACN 082 140 252



PAGE 3



KORAB RESOURCES LIMITED

KORAB HOUSE

www.korab.com.au

Issued Capital

Issued Shares: 367 Mln
Last Price: 2.7 cents
Capitalisation: \$10 Mln

Listing Code

ASX: KOR

Directors

Andrej K. Karpinski
Executive Chairman
Executive Director

Anthony G. Wills
Non-executive Director
(Independent)

Alicja Karpinski
Non-executive Director

Projects

Winchester
(Rum Jungle, NT)
Magnesium

Sundance
(Rum Jungle, NT)
Gold, Silver, Tin

Batchelor & G. Alligator
(Rum Jungle, NT)
Gold, Silver, Zinc, Lead, Nickel,
Copper, Cobalt, Tin, Rare Earth
Oxides, Scandium, Lithium,
Manganese, Iron Ore, Uranium

Geolsec
(Rum Jungle, NT)
Phosphate
Rare Earth Oxides
Uranium
(Sub-leased to third party)

Mt. Elephant
(Ashburton, WA)
Gold, Copper

Bobrikovo
(Luhansk, UKRAINE)
Gold, Silver, Zinc, Lead,
Antimony

an early stage and are incomplete any announcement of the details of these discussions would be premature and speculative.

PERMITTING

During the quarter, Korab Group continued to work on the MMP for the Winchester quarry with the aim of completing it as soon as possible. The work on the Mine Management Plan for the Winchester magnesite quarry has continued through the quarter and is progressing well.

This MMP for quarrying is still being worked on in parallel with work on other matters, projects, and initiatives covered in this report. There is still a considerable amount of work to be completed before this MMP can be submitted to NT DPIR. As a result of this, Korab Group is not in a position at this point in time to provide temporal guidance regarding the anticipated timing of the completion and the lodgment of this MMP. Korab Group will advise the market once the MMP for the Winchester quarry has been completed and lodged.

The process of MMP preparations is complex and in addition to the design of the start-up quarry, requires addressing issues relating to potential future expansion of the Project into production of magnesium metal and its related logistics and infrastructure. In essence, the mine, site infrastructure, and plant layout would be very simple and rudimentary if Winchester Project was to be operated as a direct shipping ore (DSO) quarry which does not require any on-site mineral processing (other than crushing, screening, and sorting).

The mine, mining schedule, site infrastructure, and plant layout would be quite different and much more complex if Winchester Project was expanded to include a kiln and a smelter based on the original, tested and proven production method to be operated as a magnesium metal producer. For the Winchester Magnesium Project layout based on the original tested technology see Figure 9. The layout would be even more complex if the alternative production method was to be used.

The MMP, which we are working on, should allow for this potential expansion to be accomplished with a minimum disruption to the ongoing DSO quarry operation and without the necessity to relocate the mine infrastructure including the pit access ramps, ROM pads, stockpiles, waste dumps, internal roads, plant site, etc. MMP development also includes "quarantining" of certain zones of the Project area to ensure that the infrastructure does not end up on top of the potential valuable mineral resource.

ABOUT WINCHESTER MAGNESIUM CARBONATE PROJECT

The proposed Winchester magnesium mine is located 2 km from the regional centre of Batchelor some 70 km south of Darwin along Stuart Highway. Please refer to Figure 5 and Figure 9 for details of the location of the proposed Winchester Magnesium Plant, and Korab Group's various mineral tenements in the area. Winchester Magnesium Deposit is covered by 3-6 meters of overburden consisting of loose clay and gravel. Massive magnesite mineralisation of high-grade magnesite commences immediately below the overburden (Figure 7 and Figure 8).

For the mineral resource statement and the Competent Person statement in respect of the Winchester Project please refer to page 59 of "KORAB RESOURCES LIMITED AND CONTROLLED ENTITIES ANNUAL REPORT FOR THE YEAR ENDED 30 JUNE 2022", copy of which is available from the ASX announcement platform and from Korab's website.

Magnesite rock (after it has been converted to magnesium oxide) is primarily used in the making of refractory linings necessary for the production of steel, cement, and glass. Other main uses of magnesium oxides and other magnesium compounds are in production of magnesium metal which is then used in production of aluminium/magnesium high-strength light-weight alloys used in car making (especially electric vehicles), aerospace, and packaging.

Other uses are in green hydrogen production, rechargeable and single-use magnesium-ion batteries, new-chemistry lithium-ion batteries (where magnesium alloy is used to replace much more expensive



20 PROWSE STREET, WEST PERTH, WA, 6005, AUSTRALIA
PO BOX 1958, WEST PERTH, WA, 6872, AUSTRALIA
TEL (08) 9474 6166 FAX (08) 9322 6333
ACN 082 140 252





KORAB RESOURCES LIMITED

KORAB HOUSE

www.korab.com.au

Issued Capital

Issued Shares: 367 Mln
Last Price: 2.7 cents
Capitalisation: \$10 Mln

Listing Code

ASX: KOR

Directors

Andrej K. Karpinski
Executive Chairman
Executive Director

Anthony G. Wills
Non-executive Director
(Independent)

Alicja Karpinski
Non-executive Director

Projects

Winchester
(Rum Jungle, NT)
Magnesium

Sundance
(Rum Jungle, NT)
Gold, Silver, Tin

Batchelor & G. Alligator
(Rum Jungle, NT)
Gold, Silver, Zinc, Lead, Nickel,
Copper, Cobalt, Tin, Rare Earth
Oxides, Scandium, Lithium,
Manganese, Iron Ore, Uranium

Geolsec
(Rum Jungle, NT)
Phosphate
Rare Earth Oxides
Uranium
(Sub-leased to third party)

Mt. Elephant
(Ashburton, WA)
Gold, Copper

Bobrikovo
(Luhansk, UKRAINE)
Gold, Silver, Zinc, Lead,
Antimony

nickel and cobalt), betavoltaic batteries (where nuclear waste is converted directly to electricity), water purification, cattle feed, and nickel and cobalt metallurgy.

China plans to increase the use of magnesium metal in cars from 8.5 Kg/car to 45 Kg/car in the near term. Between 2000 and 2021, China's control over global magnesium production increased from 12% of the global supply to 87% of global magnesium supply, creating an effective international monopoly on a 1.2 million tonnes per annum market. The situation is even more dramatic in Europe where China supplies over 95% of magnesium metal.

Magnesium prices in US are significantly higher than Chinese or European magnesium prices because US imposes approximately 140% anti-dumping import duty on Chinese magnesium (Figure 1). Consequently, exporting magnesium metal to US is a very attractive proposition for Korab Resources due to potentially much higher profit margin resulting from high local US prices and an exemption of Australian magnesium from import duties pursuant to the Australia–United States Free Trade Agreement.

WORLD PRIMARY MG PRICES

(2001-2022, US\$/t)

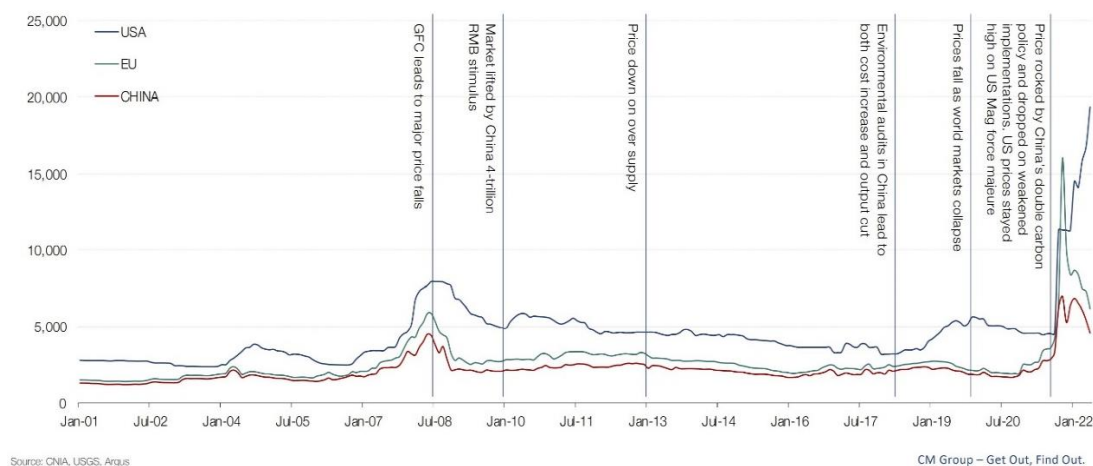


Figure 1 Global primary magnesium metal prices

Winchester Project waited for development for 2 decades primarily because of low magnesium prices prevailing between 2000 and 2020 (between \$1,300/t and \$2,000/t) and low magnesium oxide prices (CCM and DBM) during this period. These depressed prices were caused by rapid growth in Chinese production capacity of both magnesium metal and magnesium oxides, with supply growth outstripping the growth in demand. This has made the development of Winchester not feasible until few years ago when prices of magnesite and magnesium oxides have markedly improved.

DRILLING CAMPAIGN

Korab plans to undertake a drilling campaign aimed at: aggressive resource expansion at Korab Group's Winchester magnesium deposit; drill testing of potential lithium and Rare Earth Oxides (REO) targets generated by the first systematic in-depth review of lithium and REO potential of the Batchelor/Green Alligator Project currently being undertaken; and following up multiple nickel, copper and cobalt targets generated by prior drilling programs.

This drilling program will consist of 100-130 RC and diamond core drill holes for a total of up to 10,000-13,000 meters. This drilling campaign will target:

1. Areas within the current magnesium open pit envelope to increase the drilling density with the aim of providing data for updated mineral resource estimate;



20 PROWSE STREET, WEST PERTH, WA, 6005, AUSTRALIA
PO BOX 1958, WEST PERTH, WA, 6872, AUSTRALIA
TEL (08) 9474 6166 FAX (08) 9322 6333
ACN 082 140 252





KORAB RESOURCES LIMITED

KORAB HOUSE

www.korab.com.au

Issued Capital

Issued Shares: 367 Mln

Last Price: 2.7 cents

Capitalisation: \$10 Mln

Listing Code

ASX: KOR

Directors

Andrej K. Karpinski

Executive Chairman
Executive Director

Anthony G. Wills

Non-executive Director
(Independent)

Alicja Karpinski

Non-executive Director

Projects

Winchester

(Rum Jungle, NT)

Magnesium

Sundance

(Rum Jungle, NT)

Gold, Silver, Tin

Batchelor & G. Alligator
(Rum Jungle, NT)

Gold, Silver, Zinc, Lead, Nickel,
Copper, Cobalt, Tin, Rare Earth
Oxides, Scandium, Lithium,
Manganese, Iron Ore, Uranium

Geolsec

(Rum Jungle, NT)

Phosphate
Rare Earth Oxides
Uranium

(Sub-leased to third party)

Mt. Elephant

(Ashburton, WA)

Gold, Copper

Bobrikovo

(Luhansk, UKRAINE)

Gold, Silver, Zinc, Lead,
Antimony

2. Areas outside the current magnesium open pit envelope with the aim of in-filling the space between the multiple lines of historical RC, diamond core, and RAB drillholes completed in the past which that were not included in the estimation of the Winchester mineral resource due to the distance between the collars (see Figure 6);
3. Potential lithium and REO targets generated by the current review of Korab's exploration database;
4. Nickel, silver, gold, copper, scandium, and cobalt targets generated by the prior drilling programs undertaken by Korab and the current review of Korab's exploration database.

Planning of the RC and Diamond drilling program targeting massive magnesite and nickel, copper, and cobalt targets has been completed.

Planning of the drilling program targeting potential lithium and REO, silver, gold, and scandium targets generated by the ongoing review of Korab's exploration database is still continuing.

In parallel with the work on the Lithium and REO Review, Korab is making amendments to the Mine Management Plan for drilling to incorporate the new drill holes.

Korab has a pre-existing MMP for drilling already approved by NT DPIR covering some of the drill locations. This MMP is being expanded to cover additional drill hole locations. Once Korab finishes putting through the changes, the amended MMP for drilling will be submitted to NT DPIR for approval. Korab has already secured a field geologist, and a local drilling contractor with a drilling rig.

BATCHELOR/GREEN ALLIGATOR POLYMETALLIC PROJECT (RUM JUNGLE MINERAL FIELD, NT)

During the quarter Korab continued exploration and evaluation of Batchelor/Green Alligator Project with particular focus on gold, silver, cobalt, nickel, lead, scandium, rare earth oxides (REO), lithium, and base metals. No reportable exploration results (as the term is defined in the section 18 of the 2012 JORC code) were generated.

Korab has also continued discussions with third parties regarding potential JVs to explore the project for various commodities.

During the quarter, Korab reported that Exploration Licence EL31341 was renewed until 27 November 2024 and is eligible for further renewals. EL31341 covers 65 square kilometres and forms Green Alligator Project, part of the Batchelor/Green Alligator Project located some 70km south of Darwin (NT), near the regional town of Batchelor.

Batchelor/Green Alligator Project comprises 2 granted exploration licences (EL29550 and EL31341) and 8 granted mining leases (ML27362, ML30587, MLN512, MLN513, MLN514, MLN515, MLN542 and MLN543) covering an area of approximately 240 square kilometres of the highly prospective Pine Creek Orogen (PCO).

Portion of the Batchelor/Green Alligator Project is underlain by the Burrell Creek Formation, a part of the Finnis River Group. Other areas of the Project are underlain by Mount Bonnie Formation, Wildman Siltstone, Koolpin Formation, and Gerowie Tuff (see Figure 4).

Gold prospectivity of the Batchelor/Green Alligator Project stems from discovery of several large gold deposits in similar geological and structural settings elsewhere within the Pine Creek Orogen. According to NTGS records, Gerowie Tuff, Koolpin Formation, Mount Bonnie Formation, Burrell Creek Formation, and Wildman Siltstone are the host rocks of 11 of the 12 largest gold deposits historically mined in the PCO, including the 3 largest gold deposits discovered and mined within the PCO (each deposit greater than 1 Mln oz. Au): 111 tonnes Au Mount Todd deposit, 76 tonnes Au Union Reefs deposit, and 51 tonnes Au Rustlers Roost deposit (see Table 1). Other notable deposits with geological and structural setting similar to Batchelor/Green Alligator Project include 29 tonnes Au Cosmo Hawley deposit, and 19 tonnes Au Enterprise deposit.



20 PROWSE STREET, WEST PERTH, WA, 6005, AUSTRALIA
PO BOX 1958, WEST PERTH, WA, 6872, AUSTRALIA
TEL (08) 9474 6166 FAX (08) 9322 6333
ACN 082 140 252





KORAB RESOURCES LIMITED

KORAB HOUSE

www.korab.com.au

Issued Capital

Issued Shares: 367 Mln
Last Price: 2.7 cents
Capitalisation: \$10 Mln

Listing Code

ASX: KOR

Directors

Andrej K. Karpinski
Executive Chairman
Executive Director

Anthony G. Wills
Non-executive Director
(Independent)

Alicja Karpinski
Non-executive Director

Projects

Winchester
(Rum Jungle, NT)
Magnesium

Sundance
(Rum Jungle, NT)
Gold, Silver, Tin

Batchelor & G. Alligator
(Rum Jungle, NT)
Gold, Silver, Zinc, Lead, Nickel,
Copper, Cobalt, Tin, Rare Earth
Oxides, Scandium, Lithium,
Manganese, Iron Ore, Uranium

Geolsec
(Rum Jungle, NT)
Phosphate
Rare Earth Oxides
Uranium
(Sub-leased to third party)

Mt. Elephant
(Ashburton, WA)
Gold, Copper

Bobrikovo
(Luhansk, UKRAINE)
Gold, Silver, Zinc, Lead,
Antimony

Table 1 Twelve largest gold deposits within the Pine Creek Orogen arranged in alphabetical order (after Sener A.K. 2004)

Deposit	Resources	Tonnes Au	Formation	Host	Structural Style
<i>Brocks Creek Group</i>	7.9Mt @ 2.0g/t	16	Gerowie Tuff	Siltstone, carbonaceous siltstone, greywacke, tuff, chert & BIF	Fold
<i>Chinese Howley</i>	9.4Mt @ 1.5g/t	14	Gerowie Tuff	Greywacke, siltstone, shale, mudstone & tuff	Fold
<i>Cosmo Howley</i>	10.4Mt @ 2.8g/t	29	Koolpin Formation	Chert nodular BIF & iron-rich/partly carbonaceous mudstone	Fold
<i>Enterprise</i>	7.2Mt @ 2.7g/t	19	Mount Bonnie Formation	Greywacke, siltstone, shale & chert	Fold
<i>Goodall</i>	4.3Mt @ 2.4g/t	10	Burrell Creek Formation	Greywacke, shale & siltstone	Fold
<i>Maud Creek</i>	1.7Mt @ 7.4g/t	13	Tollis Formation	Mafic tuff, greywacke, mudstone & siltstone	Fault
<i>Mount Todd</i>	109.2Mt @ 1.0g/t	111	Burrell Creek Formation	Greywacke, shale & tuff	Fault
<i>Rustlers Roost</i>	51.0Mt @ 1.0g/t	51	Mount Bonnie Formation	Greywacke, siltstone, chert & dolomitic/carbonaceous shale	Fold
<i>Spring Hill</i>	11.9Mt @ 1.0g/t	12	Mount Bonnie Formation	Greywacke, mudstone, siltstone, chert, BIF & carbonaceous mudstone	Fold
<i>Toms Gully</i>	1.5Mt @ 9.6g/t	15	Wildman Siltstone	Carbonaceous siltstone & mudstone	Fault
<i>Union Reefs</i>	38.1Mt @ 2.0g/t	76	Burrell Creek Formation	Greywacke, shale & siltstone	Fault
<i>Woolwonga</i>	5.0Mt @ 2.8g/t	14	Mount Bonnie Formation	Greywacke & partly carbonaceous siltstone/mudstone	Fold

Lithium prospectivity of Batchelor/Green Alligator Project stems from the fact that Burrell Creek Formation hosts lithium mineralisation within nearby tenements owned or operated by Core Lithium (ASX: CXO), Ragusa Minerals (ASX: RAS), Lithium Plus Minerals (ASX: LPM), and Evergreen Lithium (ASX: EG1) (see Figure 2).

At the nearby Litchfield Pegmatite Belt, the Finniss Lithium Project, and Bynoe project lithium-bearing pegmatites are found within the same Burrell Creek Formation adjacent to and within aureole of I-type and S-type granites as the source of LCT pegmatites. The geological setting of the Batchelor/Green Alligator Project is broadly similar. The Batchelor/Green Alligator Project is proximal to I-type and S-type granites as the source of LCT pegmatites (see Figure 2 and Figure 4).



20 PROWSE STREET, WEST PERTH, WA, 6005, AUSTRALIA
PO BOX 1958, WEST PERTH, WA, 6872, AUSTRALIA
TEL (08) 9474 6166 FAX (08) 9322 6333
ACN 082 140 252





KORAB RESOURCES LIMITED

KORAB HOUSE

www.korab.com.au

Issued Capital

Issued Shares: 367 Mln

Last Price: 2.7 cents

Capitalisation: \$10 Mln

Listing Code

ASX: KOR

Directors

Andrej K. Karpinski

Executive Chairman

Executive Director

Anthony G. Wills

Non-executive Director

(Independent)

Alicja Karpinski

Non-executive Director

Projects

Winchester

(Rum Jungle, NT)

Magnesium

Sundance

(Rum Jungle, NT)

Gold, Silver, Tin

Batchelor & G. Alligator

(Rum Jungle, NT)

Gold, Silver, Zinc, Lead, Nickel,

Copper, Cobalt, Tin, Rare Earth

Oxides, Scandium, Lithium,

Manganese, Iron Ore, Uranium

Geolsec

(Rum Jungle, NT)

Phosphate

Rare Earth Oxides

Uranium

(Sub-leased to third party)

Mt. Elephant

(Ashburton, WA)

Gold, Copper

Bobrikovo

(Luhansk, UKRAINE)

Gold, Silver, Zinc, Lead,

Antimony

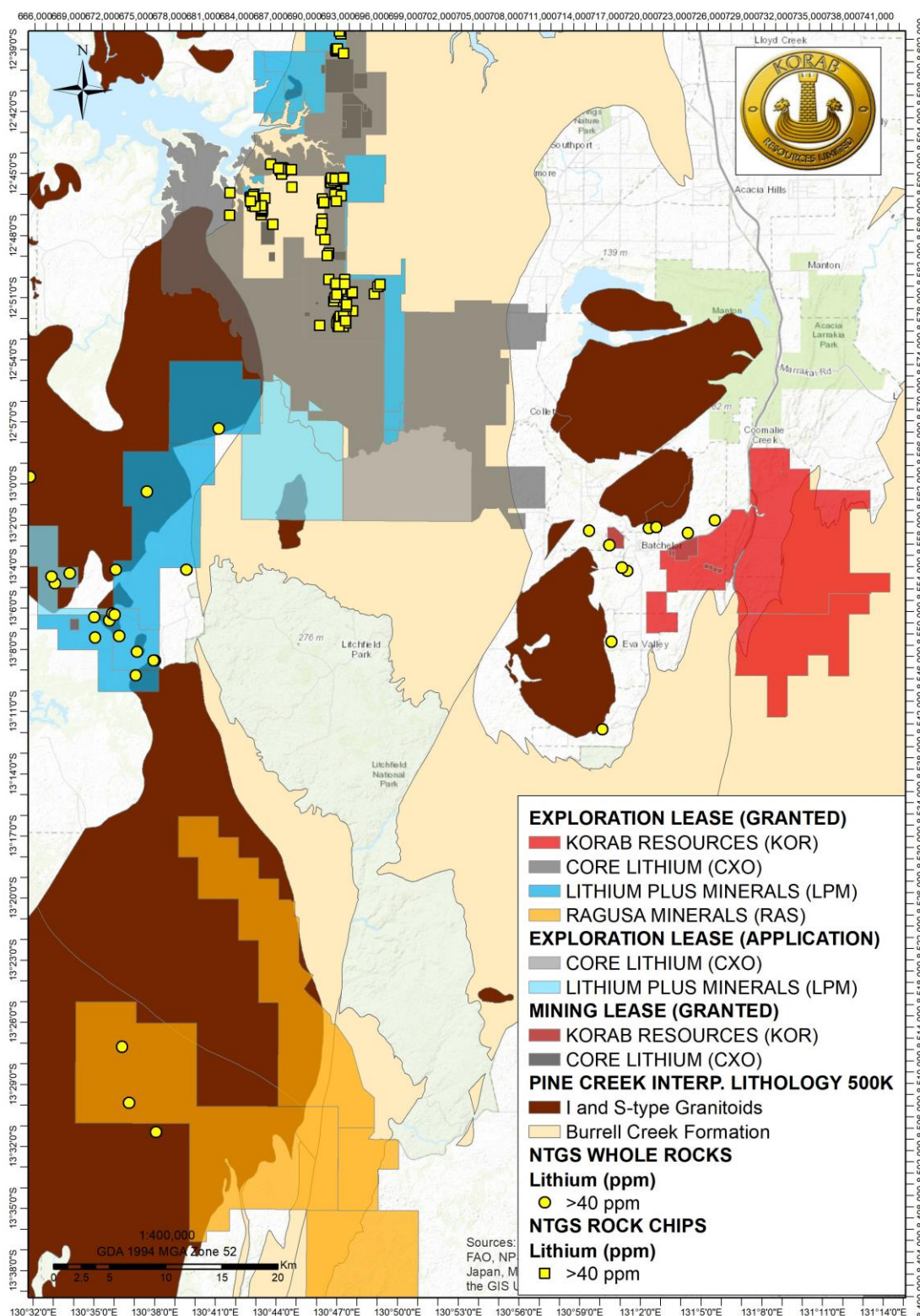


Figure 2 Core Lithium, Lithium Plus, and Ragusa projects relative to Korab projects showing lithium-rich samples, Burrell Creek Formation and source granites.



20 PROWSE STREET, WEST PERTH, WA, 6005, AUSTRALIA

PO BOX 1958, WEST PERTH, WA, 6872, AUSTRALIA

TEL (08) 9474 6166 FAX (08) 9322 6333

ACN 082 140 252





KORAB RESOURCES LIMITED

KORAB HOUSE

www.korab.com.au

Issued Capital

Issued Shares: 367 Mln
Last Price: 2.7 cents
Capitalisation: \$10 Mln

Listing Code

ASX: KOR

Directors

Andrej K. Karpinski
Executive Chairman
Executive Director

Anthony G. Wills
Non-executive Director
(Independent)

Alicja Karpinski
Non-executive Director

Projects

Winchester
(Rum Jungle, NT)
Magnesium

Sundance
(Rum Jungle, NT)
Gold, Silver, Tin

Batchelor & G. Alligator
(Rum Jungle, NT)
Gold, Silver, Zinc, Lead, Nickel,
Copper, Cobalt, Tin, Rare Earth
Oxides, Scandium, Lithium,
Manganese, Iron Ore, Uranium

Geolsec
(Rum Jungle, NT)
Phosphate
Rare Earth Oxides
Uranium
(Sub-leased to third party)

Mt. Elephant
(Ashburton, WA)
Gold, Copper

Bobrikovo
(Luhansk, UKRAINE)
Gold, Silver, Zinc, Lead,
Antimony

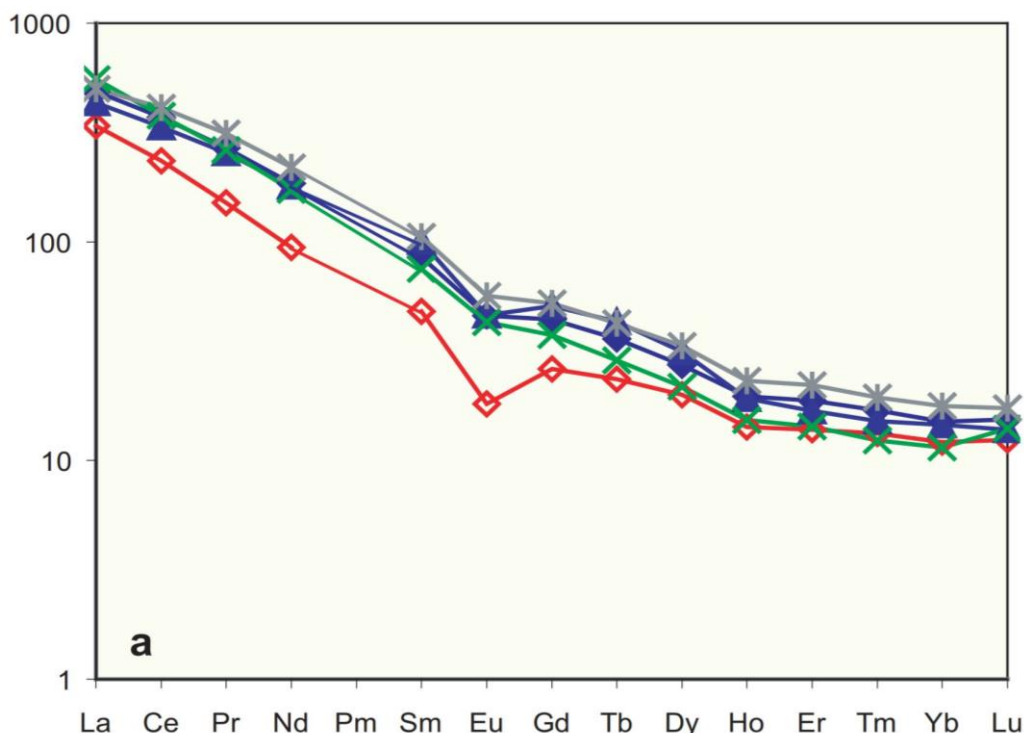


Figure 3 REO spidergram for Rum Jungle Complex granites; after Ahmad et al (2006), data from McCready et al (2004).

Northern Territory Geological Survey (NTGS) database confirms elevated lithium in whole-rock samples collected in close proximity to the Project, between the tenements forming Korab's Projects and the I-type and S-type granites to the north and west, as well as the presence of pegmatites and carbonatite rocks (including monazite) at numerous locations within Korab's Project (see Figure 2 and Figure 4). Furthermore, NTGS reports show that the Rum Jungle Complex granites immediately to the north of Batchelor/Green Alligator Project are enriched with REO, and are particularly rich in Praseodymium and Neodymium (see Figure 3).

Given the potential of Batchelor/Green Alligator Project to host lithium and rare earth oxides mineralisation, Korab Group is conducting first in-depth systematic review of the Group's exploration database consisting of results from Korab's previously reported historical exploration programs, as well as various closed file, and open file reports targeting lithium and REO.

According to U.S. Geological Survey, Lithium-caesium-tantalum (LCT) pegmatites comprise a compositionally defined subset of granitic pegmatites. The major minerals are quartz, potassium feldspar, albite, and muscovite; typical accessory minerals include biotite, garnet, tourmaline, and apatite. The principal lithium ore minerals are spodumene, petalite, and lepidolite; caesium mostly comes from pollucite; and tantalum mostly comes from columbite-tantalite. Tin ore as cassiterite and beryllium ore as beryl also occur in LCT pegmatites. Individual crystals in LCT pegmatites can be enormous: the largest spodumene was 14 meters long, the largest beryl was 18 meters long, and the largest potassium feldspar was 49 meters long. Most LCT pegmatites are hosted in metamorphosed supracrustal rocks in the upper greenschist to lower amphibolite facies. Lithium-caesium-tantalum pegmatite intrusions generally are emplaced late during orogeny, with emplacement being controlled by pre-existing structures. Typically, they crop out near evolved, peraluminous granites and leucogranites from which they are inferred to be derived by fractional crystallization. In cases where a parental granite pluton is not exposed, one is inferred to lie at depth. Lithium-caesium-tantalum LCT pegmatite melts are enriched in fluxing components including H₂O, F, P, and B, which depress the solidus temperature, lower the density, and increase rates of ionic diffusion. This, in turn, enables



20 PROWSE STREET, WEST PERTH, WA, 6005, AUSTRALIA
PO BOX 1958, WEST PERTH, WA, 6872, AUSTRALIA
TEL (08) 9474 6166 FAX (08) 9322 6333
ACN 082 140 252





KORAB RESOURCES LIMITED

KORAB HOUSE

www.korab.com.au

Issued Capital

Issued Shares: 367 Mln
Last Price: 2.7 cents
Capitalisation: \$10 Mln

Listing Code

ASX: KOR

Directors

Andrej K. Karpinski
Executive Chairman
Executive Director

Anthony G. Wills
Non-executive Director
(Independent)

Alicja Karpinski
Non-executive Director

Projects

Winchester
(Rum Jungle, NT)
Magnesium

Sundance
(Rum Jungle, NT)
Gold, Silver, Tin

Batchelor & G. Alligator
(Rum Jungle, NT)
Gold, Silver, Zinc, Lead, Nickel,
Copper, Cobalt, Tin, Rare Earth
Oxides, Scandium, Lithium,
Manganese, Iron Ore, Uranium

Geolsec
(Rum Jungle, NT)
Phosphate
Rare Earth Oxides
Uranium
(Sub-leased to third party)

Mt. Elephant
(Ashburton, WA)
Gold, Copper

Bobrikovo
(Luhansk, UKRAINE)
Gold, Silver, Zinc, Lead,
Antimony

pegmatites to form thin dikes and massive crystals despite having a felsic composition and temperatures that are significantly lower than ordinary granitic melts. Lithium-caesium-tantalum pegmatites crystallized at remarkably low temperatures (about 350–550 °C) in a remarkably short time (days to years). Lithium-caesium-tantalum pegmatites form in orogenic hinterlands as products of plate convergence. Most formed during collisional orogeny (for example, Kings Mountain district, North Carolina). Specific causes of LCT pegmatite-related magmatism could include: ordinary arc processes; over thickening of continental crust during collision or subduction; slab breakoff during or after collision; slab delamination before, during, or after collision; and late collisional extensional collapse and consequent decompression melting. Lithium-caesium-tantalum pegmatite deposits are present in all continents including Antarctica and in rocks spanning 3 billion years. The global age distribution of LCT pegmatites is similar to those of common pegmatites, orogenic granites, and detrital zircons. Peak times of LCT pegmatite genesis at about 2640, 1800, 960, 485, and 310 Ma (million years before present) correspond to times of collisional orogeny and supercontinent assembly. Between these pulses were long intervals when few or no LCT pegmatites formed. These minima overlap with supercontinent tenures at ca. 2450–2225, 1625–1000, 875–725, and 250–200 Ma. Exploration and assessment for LCT pegmatites are guided by a number of observations. In frontier areas where exploration has been minimal at best, the key first-order criteria are an orogenic hinterland setting, appropriate regional metamorphic grades, and the presence of evolved granites and common granitic pegmatites. New LCT pegmatites are most likely to be found near known deposits. Pegmatites tend to show a regional mineralogical and geochemical zoning pattern with respect to the inferred parental granite, with the greatest enrichment in the more distal pegmatites. Mineral-chemical trends in common pegmatites that can point toward an evolved LCT pegmatite include: increasing rubidium in potassium feldspar, increasing lithium in white mica, increasing manganese in garnet, and increasing tantalum and manganese in columbite-tantalite. Most LCT pegmatite bodies show a distinctive internal zonation featuring four zones: border, wall, intermediate (where lithium, caesium, and tantalum are generally concentrated), and core. This zonation is expressed both in cross section and map view; thus, what may appear to be a common pegmatite may instead be the edge of a mineralized body.

SUNDANCE GOLD MINE (RUM JUNGLE MINERAL FIELD, NT)

The Company has continued the work on re-opening of the Sundance gold mine located south of Darwin in the Northern Territory and on treating the rock (which has been stockpiled on the mining leases) at the processing plant owned by a third party. Discussions with third parties are ongoing but are incomplete and details are confidential. There can be no certainty that any agreement or agreements can be reached or that any agreement will eventuate from these discussions. Accordingly, no investment decision should be made on the basis of this information. The Sundance gold mine is located on granted mining leases MLN542 and MLN543 (100% owned by Korab). In addition to the planned Winchester RC and DD drilling campaign, the Company also plans an auger drilling program at Sundance gold mine to test the grade of the remaining stockpiles of previously mined rock located at Sundance.

GEOLSEC PHOSPHATE PROJECT (RUM JUNGLE MINERAL FIELD, NT)

During the quarter Korab Group focused on other mineral assets and consequently exploration work at the Geolsec Project was limited. An unrelated company (the Miner), is sub-leasing the Geolsec Phosphate Project from Korab Group (as reported to the market on 25 July 2018). During the last 6 months, Korab received several unsolicited expressions of interest from unrelated third parties seeking potential deals involving the Geolsec phosphate project. Korab's discussions with these parties regarding the Geolsec Project are incomplete and confidential and there can be no certainty that any agreement or agreements can be reached or that any transaction (or transactions) will eventuate. No commercial terms have been agreed between the parties. Third parties' interest in Geolsec Phosphate Project stems from high rock phosphate prices which are currently trading around AU\$515 per metric tonne (see Figure 12) and the attractive location of the Project: an elevated, all-weather, granted mining lease (ML27362) approximately 1 hour drive from Darwin Port (see Figure 4 and Figure 5).



20 PROWSE STREET, WEST PERTH, WA, 6005, AUSTRALIA
PO BOX 1958, WEST PERTH, WA, 6872, AUSTRALIA
TEL (08) 9474 6166 FAX (08) 9322 6333
ACN 082 140 252





KORAB RESOURCES LIMITED

KORAB HOUSE

www.korab.com.au

Issued Capital

Issued Shares: 367 Mln

Last Price: 2.7 cents

Capitalisation: \$10 Mln

Listing Code

ASX: KOR

Directors

Andrej K. Karpinski

Executive Chairman

Executive Director

Anthony G. Wills

Non-executive Director

(Independent)

Alicja Karpinski

Non-executive Director

Projects

Winchester

(Rum Jungle, NT)

Magnesium

Sundance

(Rum Jungle, NT)

Gold, Silver, Tin

Batchelor & G. Alligator

(Rum Jungle, NT)

Gold, Silver, Zinc, Lead, Nickel,

Copper, Cobalt, Tin, Rare Earth

Oxides, Scandium, Lithium,

Manganese, Iron Ore, Uranium

Geolsec

(Rum Jungle, NT)

Phosphate

Rare Earth Oxides

Uranium

(Sub-leased to third party)

Mt. Elephant

(Ashburton, WA)

Gold, Copper

Bobrikovo

(Luhansk, UKRAINE)

Gold, Silver, Zinc, Lead,

Antimony

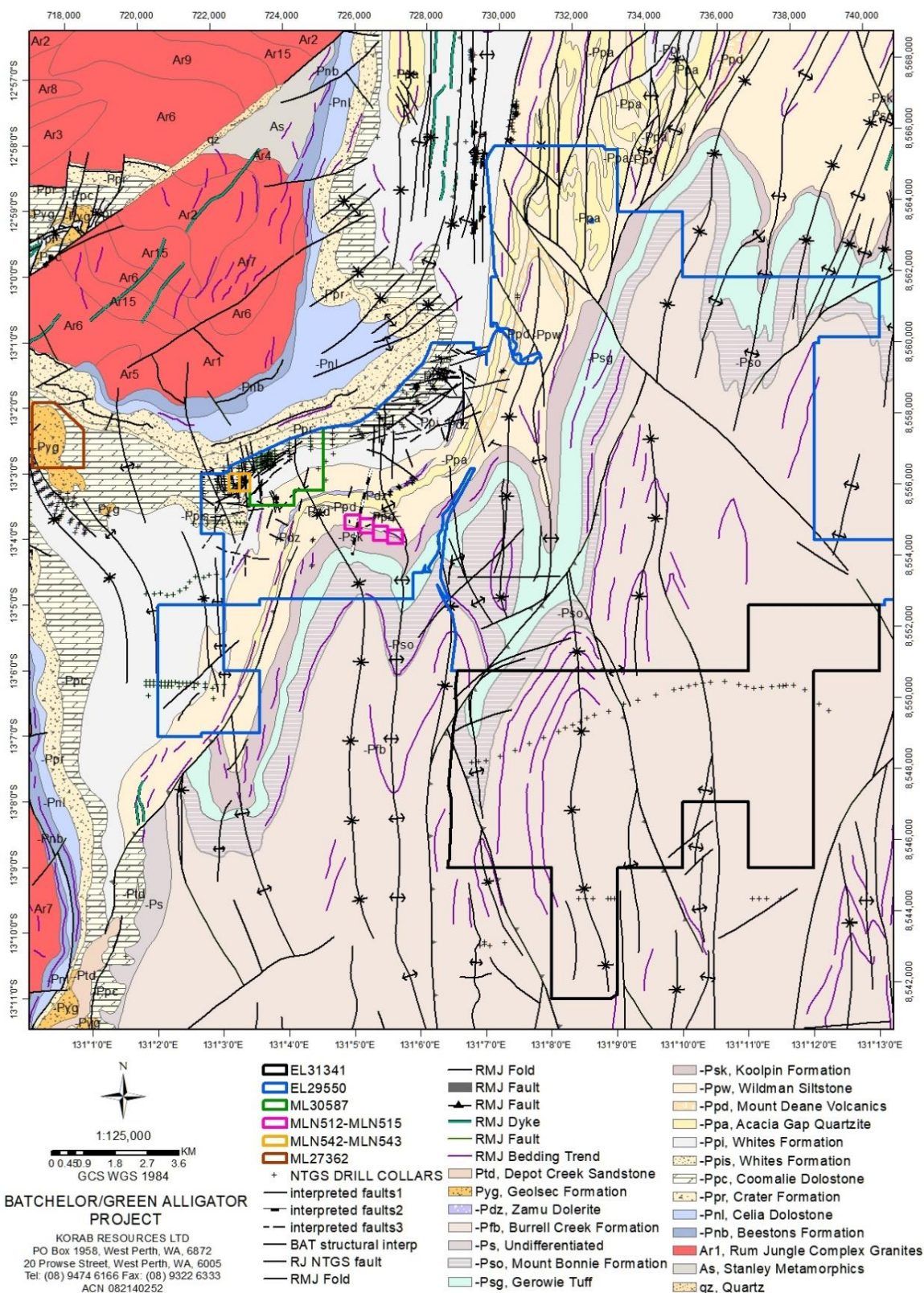


Figure 4 Korab Projects' location showing local geology, lithium-rich and REO-rich Rum Jungle Complex granites, potential conduits for lithium and/or REO accumulation, and historical drilling (after NTGS).



20 PROWSE STREET, WEST PERTH, WA, 6005, AUSTRALIA

PO BOX 1958, WEST PERTH, WA, 6872, AUSTRALIA

TEL (08) 9474 6166 FAX (08) 9322 6333

ACN 082 140 252





KORAB RESOURCES LIMITED

KORAB HOUSE

www.korab.com.au

Issued Capital

Issued Shares: 367 Mln

Last Price: 2.7 cents

Capitalisation: \$10 Mln

Listing Code

ASX: KOR

Directors

Andrej K. Karpinski

Executive Chairman
Executive Director

Anthony G. Wills

Non-executive Director
(Independent)

Alicja Karpinski

Non-executive Director

Projects

Winchester

(Rum Jungle, NT)

Magnesium

Sundance

(Rum Jungle, NT)

Gold, Silver, Tin

Batchelor & G. Alligator

(Rum Jungle, NT)

Gold, Silver, Zinc, Lead, Nickel,
Copper, Cobalt, Tin, Rare Earth
Oxides, Scandium, Lithium,
Manganese, Iron Ore, Uranium

Geolsec

(Rum Jungle, NT)

Phosphate
Rare Earth Oxides
Uranium
(Sub-leased to third party)

Mt. Elephant

(Ashburton, WA)

Gold, Copper

Bobrikovo

(Luhansk, UKRAINE)

Gold, Silver, Zinc, Lead,
Antimony

BOBRIKOV GOLD AND SILVER MINE (UKRAINE)

During the prior quarter, Korab paused the discussions with parties interested in acquiring mineral assets located in eastern Ukraine regarding a potential sale, or a joint venture development of the Bobrikovo Project. The discussions regarding the Bobrikovo Project may be resumed at any time. These discussions are incomplete and confidential and there can be no certainty that any agreement or agreements can be reached or that any transaction will eventuate. No commercial terms have been agreed between the parties. Accordingly, no investment decision should be made on the basis of this information. For the mineral resource statement and the Competent Person statement in respect of the Bobrikovo Project please refer to pages 59 and 60 of "KORAB RESOURCES LIMITED AND CONTROLLED ENTITIES ANNUAL REPORT FOR THE YEAR ENDED 30 JUNE 2022", copy of which is available from the ASX announcement platform and from Korab's website. Current situation in Ukraine is well known to the market from extensive media coverage. Accumulated capitalised exploration expenditure and acquisition costs of Bobrikovo Project have been written down to NIL at consolidation level in 2014.

MT. ELEPHANT PROJECT (ASHBURTON MINERAL FIELD, WA)

During the quarter, Korab Group continued the exploration and evaluation of the Mt. Elephant Project exploration licences E08/2307, E52/2724, E08/2756, and E08/2757, focusing primarily on their gold, iron ore, and base metals potential. No reportable exploration results (as the term is defined in the section 18 of the 2012 JORC code) were generated. Mt. Elephant Project consists of four granted exploration licences and two exploration licence applications (for details refer to Appendix A). As previously advised on 31 July 2020, Korab Group is in discussions with Great Fingall Mining Company NL (GFMC) regarding a potential option for GFMC to acquire the four exploration licences and two exploration licence applications. These discussions are incomplete and confidential and there can be no certainty that any agreement or agreements can be reached or that any transaction will eventuate. No commercial terms have been agreed between the parties. Accordingly, no investment decision should be made on the basis of this information. During the prior quarter, Korab received unsolicited expression of interest from yet another unrelated party to establish a JV regarding the Project. These discussions are incomplete and confidential and there can be no certainty that any agreement or agreements can be reached or that any transaction will eventuate. No commercial terms have been agreed between the parties. Accordingly, no investment decision should be made on the basis of this information.

PAYMENTS TO RELATED PARTIES

During the quarter, Korab repaid \$27,900 of the debt owed to Rheingold Investments Corporation Pty Ltd, a company controlled by Korab's Executive Chairman, Andrej K. Karpinski. This amount forms part of (and is included in) cashflow movements disclosed in Item 3 of the *Appendix 5B - Quarterly Cashflow Report*, which is appended to this Quarterly Activities Report.



20 PROWSE STREET, WEST PERTH, WA, 6005, AUSTRALIA
PO BOX 1958, WEST PERTH, WA, 6872, AUSTRALIA
TEL (08) 9474 6166 FAX (08) 9322 6333
ACN 082 140 252





KORAB RESOURCES LIMITED

KORAB HOUSE

www.korab.com.au

Issued Capital

Issued Shares: 367 Mln
Last Price: 2.7 cents
Capitalisation: \$10 Mln

Listing Code

ASX: KOR

Directors

Andrej K. Karpinski
Executive Chairman
Executive Director

Anthony G. Wills
Non-executive Director
(Independent)

Alicja Karpinski
Non-executive Director

Projects

Winchester
(Rum Jungle, NT)
Magnesium

Sundance
(Rum Jungle, NT)
Gold, Silver, Tin

Batchelor & G. Alligator
(Rum Jungle, NT)
Gold, Silver, Zinc, Lead, Nickel,
Copper, Cobalt, Tin, Rare Earth
Oxides, Scandium, Lithium,
Manganese, Iron Ore, Uranium

Geolsec
(Rum Jungle, NT)
Phosphate
Rare Earth Oxides
Uranium
(Sub-leased to third party)

Mt. Elephant
(Ashburton, WA)
Gold, Copper

Bobrikovo
(Luhansk, UKRAINE)
Gold, Silver, Zinc, Lead,
Antimony

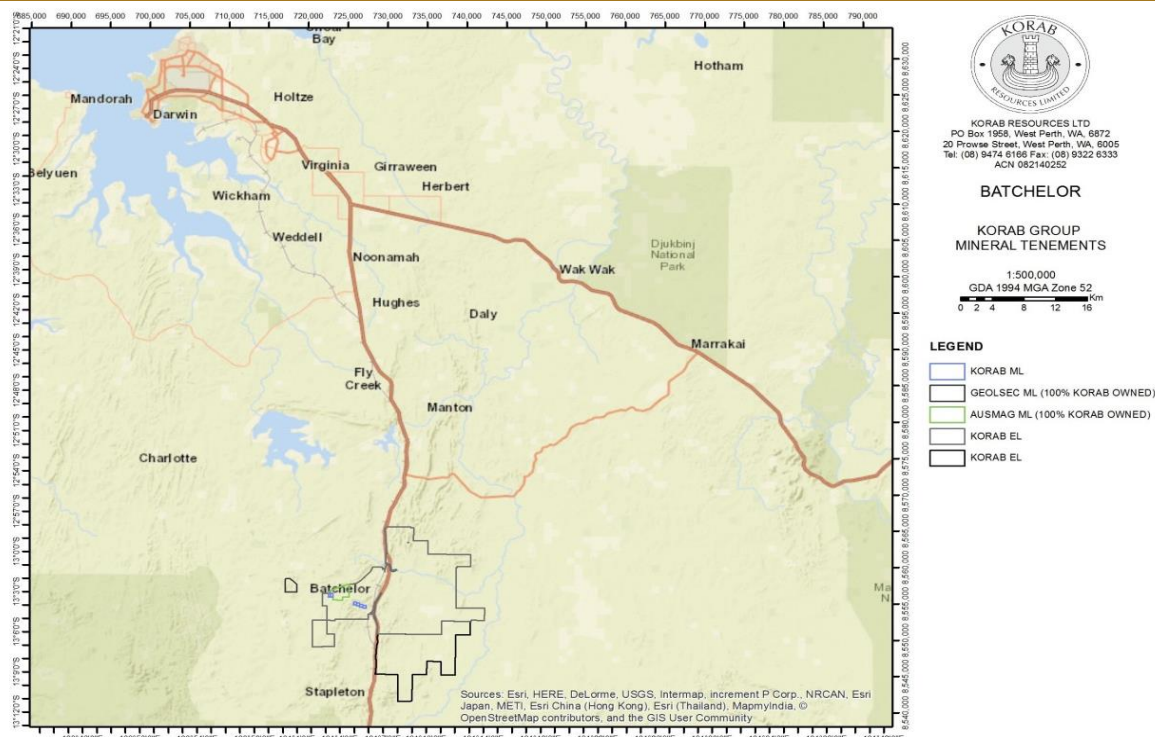


Figure 5 Location of Korab Group's mineral assets in the Northern territory relative to Darwin Port.

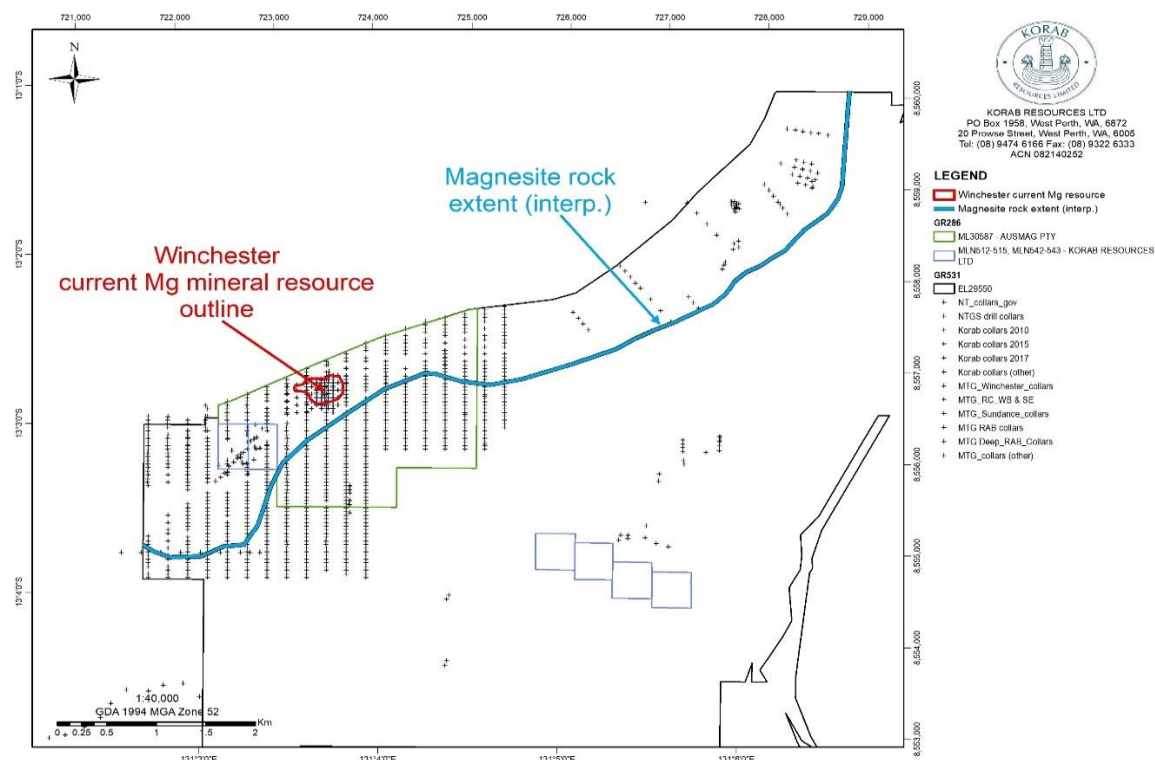


Figure 6 Historical drilling, current resource and extent of interpreted magnesite within Korab tenements



20 PROWSE STREET, WEST PERTH, WA, 6005, AUSTRALIA
PO BOX 1958, WEST PERTH, WA, 6872, AUSTRALIA
TEL (08) 9474 6166 FAX (08) 9322 6333
ACN 082 140 252





KORAB RESOURCES LIMITED

KORAB HOUSE

www.korab.com.au

Issued Capital

Issued Shares: 367 Mln

Last Price: 2.7 cents

Capitalisation: \$10 Mln

Listing Code

ASX: KOR

Directors

Andrej K. Karpinski

Executive Chairman
Executive Director

Anthony G. Wills

Non-executive Director
(Independent)

Alicja Karpinski

Non-executive Director

Projects

Winchester

(Rum Jungle, NT)

Magnesium

Sundance

(Rum Jungle, NT)

Gold, Silver, Tin

Batchelor & G. Alligator

(Rum Jungle, NT)

Gold, Silver, Zinc, Lead, Nickel,
Copper, Cobalt, Tin, Rare Earth
Oxides, Scandium, Lithium,
Manganese, Iron Ore, Uranium

Geolsec

(Rum Jungle, NT)

Phosphate
Rare Earth Oxides
Uranium
(Sub-leased to third party)

Mt. Elephant

(Ashburton, WA)

Gold, Copper

Bobrikovo

(Luhansk, UKRAINE)

Gold, Silver, Zinc, Lead,
Antimony



Figure 7 Test mining of magnesium at Winchester during the wet season (after blasting Level 0)

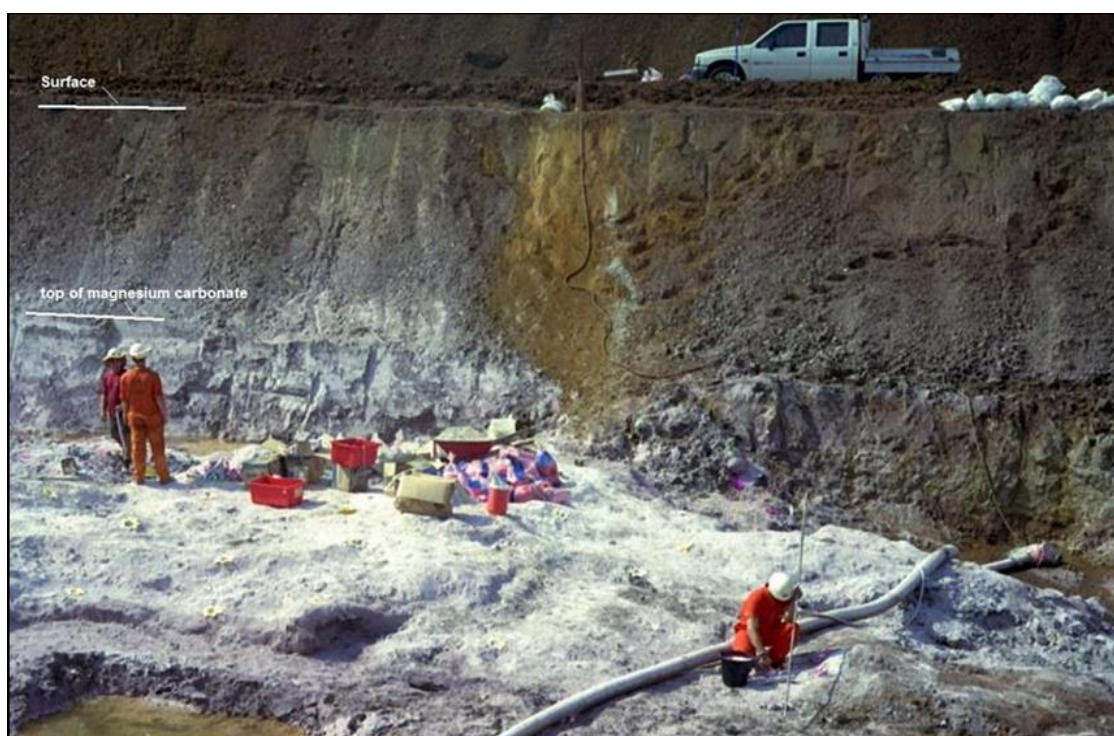


Figure 8 Test mining of magnesium at Winchester during the wet season (preparing to blast Level -1)



20 PROWSE STREET, WEST PERTH, WA, 6005, AUSTRALIA
PO BOX 1958, WEST PERTH, WA, 6872, AUSTRALIA
TEL (08) 9474 6166 FAX (08) 9322 6333
ACN 082 140 252



PAGE 14



KORAB RESOURCES LIMITED

KORAB HOUSE

www.korab.com.au

Issued Capital

Issued Shares: 367 Mln
Last Price: 2.7 cents
Capitalisation: \$10 Mln

Listing Code

ASX: KOR

Directors

Andrej K. Karpinski
Executive Chairman
Executive Director

Anthony G. Wills
Non-executive Director
(Independent)

Alicja Karpinski
Non-executive Director

Projects

Winchester
(Rum Jungle, NT)
Magnesium

Sundance
(Rum Jungle, NT)
Gold, Silver, Tin

Batchelor & G. Alligator
(Rum Jungle, NT)
Gold, Silver, Zinc, Lead, Nickel,
Copper, Cobalt, Tin, Rare Earth
Oxides, Scandium, Lithium,
Manganese, Iron Ore, Uranium

Geolsec
(Rum Jungle, NT)
Phosphate
Rare Earth Oxides
Uranium
(Sub-leased to third party)

Mt. Elephant
(Ashburton, WA)
Gold, Copper

Bobrikovo
(Luhansk, UKRAINE)
Gold, Silver, Zinc, Lead,
Antimony

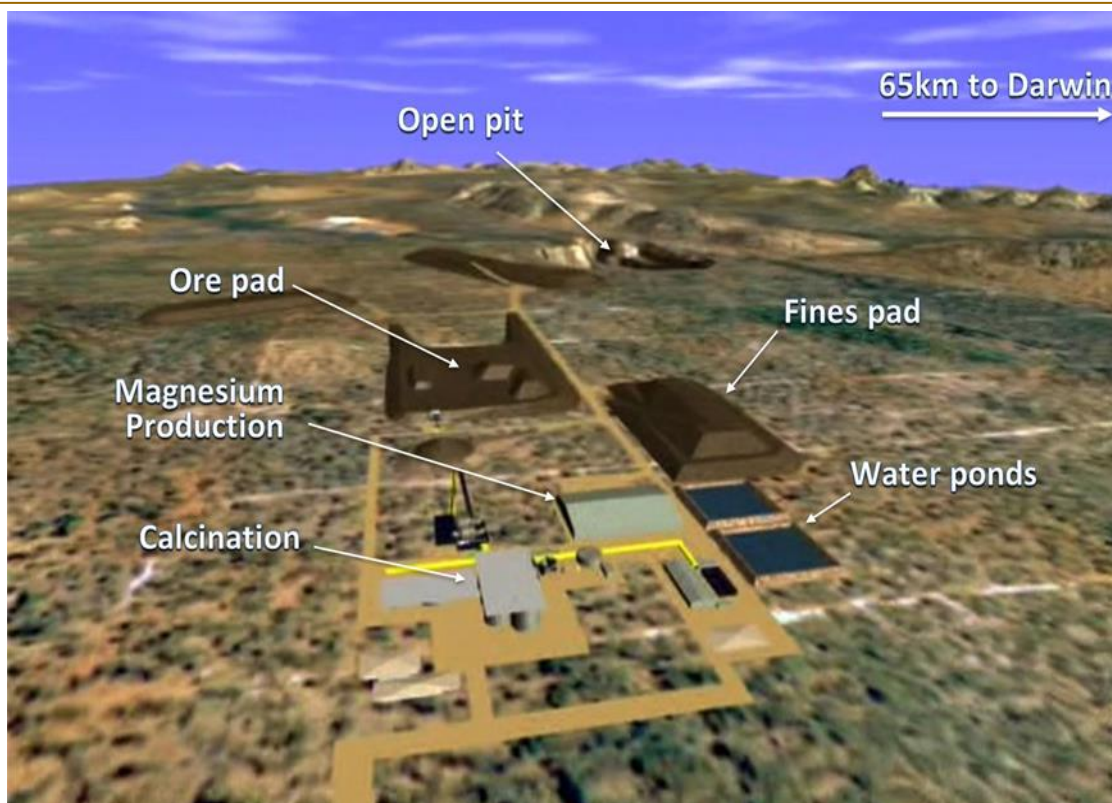


Figure 9 Layout of the Winchester magnesium plant and mine based on the technology using electric arc furnace and magnesium oxide, aluminium and ferrosilicon as feedstock.

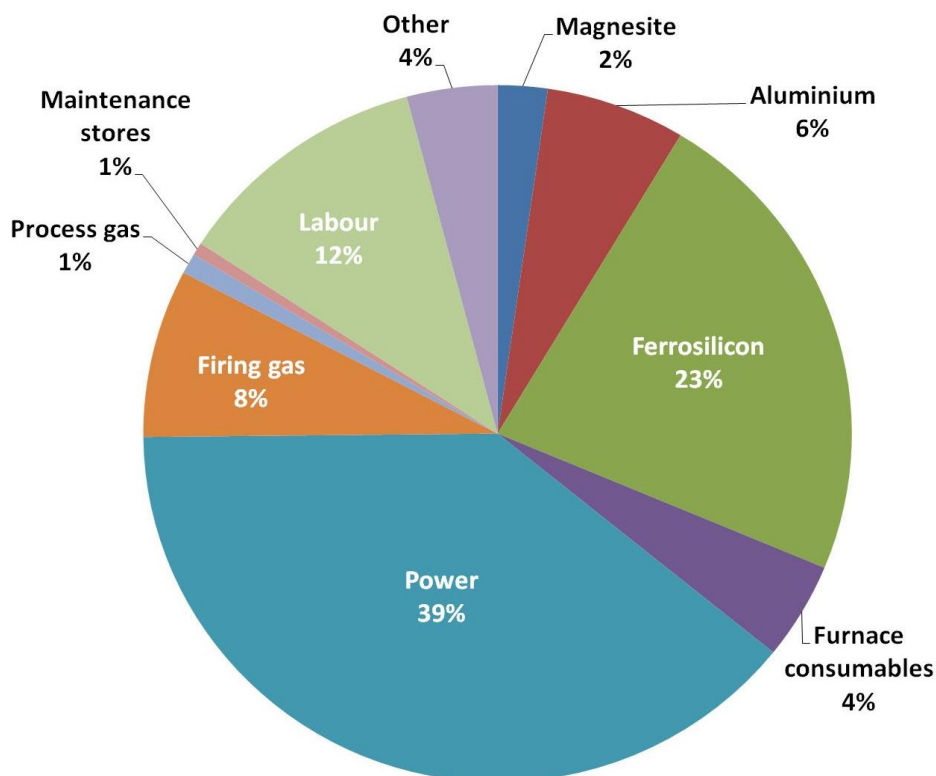


Figure 10 Production cost components by input category based on the technology using electric arc furnace and magnesium oxide, aluminium and ferrosilicon as feedstock.



20 PROWSE STREET, WEST PERTH, WA, 6005, AUSTRALIA
PO BOX 1958, WEST PERTH, WA, 6872, AUSTRALIA
TEL (08) 9474 6166 FAX (08) 9322 6333
ACN 082 140 252





KORAB RESOURCES LIMITED

KORAB HOUSE

www.korab.com.au

Issued Capital

Issued Shares: 367 Mln

Last Price: 2.7 cents

Capitalisation: \$10 Mln

Listing Code

ASX: KOR

Directors

Andrej K. Karpinski

Executive Chairman

Executive Director

Anthony G. Wills

Non-executive Director

(Independent)

Alicja Karpinski

Non-executive Director

Projects

Winchester

(Rum Jungle, NT)

Magnesium

Sundance

(Rum Jungle, NT)

Gold, Silver, Tin

Batchelor & G. Alligator

(Rum Jungle, NT)

Gold, Silver, Zinc, Lead, Nickel,

Copper, Cobalt, Tin, Rare Earth

Oxides, Scandium, Lithium,

Manganese, Iron Ore, Uranium

Geolsec

(Rum Jungle, NT)

Phosphate

Rare Earth Oxides

Uranium

(Sub-leased to third party)

Mt. Elephant

(Ashburton, WA)

Gold, Copper

Bobrikovo

(Luhansk, UKRAINE)

Gold, Silver, Zinc, Lead,

Antimony



Figure 11 Solar farms at Batchelor (Batchelor 1 and Batchelor 2) adjacent to the Winchester Project

Rock Phosphate Monthly Price - Australian Dollar per Metric Ton

Range 6m 1y 5y 10y 15y 20y

Mar 2018 - Mar 2023: 406.925 (373.23%)

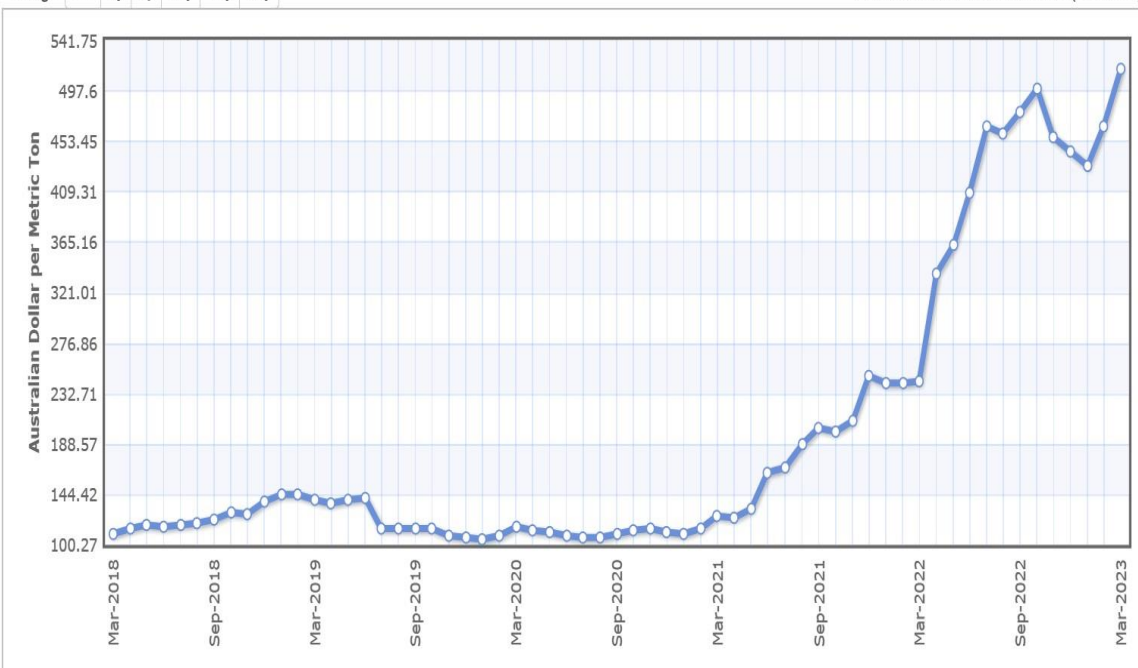


Figure 12 Rock phosphate prices in AUD have risen more than \$400/tonne (380%) between 2020 and 2023.



20 PROWSE STREET, WEST PERTH, WA, 6005, AUSTRALIA

PO BOX 1958, WEST PERTH, WA, 6872, AUSTRALIA

TEL (08) 9474 6166 FAX (08) 9322 6333

ACN 082 140 252





KORAB RESOURCES LIMITED

KORAB HOUSE

www.korab.com.au

Issued Capital

Issued Shares: 367 Mln
Last Price: 2.7 cents
Capitalisation: \$10 Mln

Listing Code

ASX: KOR

Directors

Andrej K. Karpinski
Executive Chairman
Executive Director

Anthony G. Wills
Non-executive Director
(Independent)

Alicja Karpinski
Non-executive Director

Projects

Winchester
(Rum Jungle, NT)
Magnesium

Sundance
(Rum Jungle, NT)
Gold, Silver, Tin

Batchelor & G. Alligator
(Rum Jungle, NT)
Gold, Silver, Zinc, Lead, Nickel,
Copper, Cobalt, Tin, Rare Earth
Oxides, Scandium, Lithium,
Manganese, Iron Ore, Uranium

Geolsec
(Rum Jungle, NT)
Phosphate
Rare Earth Oxides
Uranium
(Sub-leased to third party)

Mt. Elephant
(Ashburton, WA)
Gold, Copper

Bobrikovo
(Luhansk, UKRAINE)
Gold, Silver, Zinc, Lead,
Antimony

APPENDIX A

INTERESTS IN MINING TENEMENTS AS OF THE END OF THE REPORTING PERIOD

Project/Tenements	Location	Held at end of quarter	Acquired during quarter	Disposed during quarter
Batchelor/Green Alligator Project EL29550 MLN512 MLN513 MLN514 MLN515 MLN542 MLN543 EL31341	Northern Territory, Australia	100% 100% 100% 100% 100% 100% 100% 100%		
Winchester Project ML30587	Northern Territory, Australia	100%		
Geolsec Project ML27362	Northern Territory, Australia	100%		
Bobrikovo Project ¹ BKB169 4420381100646545 1589	Ukraine Luhansk Region	100% 100% 100%		
Mt. Elephant Project: E08/2307 E52/2724 E08/2756 E08/2757 ELA52/3872 ELA08/3264 ELA08/3302 ELA08/3561 ELA52/4205 ELA52/4223	Western Australia, Australia	100% 100% 100% 100% 0% 0% 0% 100% 0% 100%		100% 100% 100%
Farm-in agreements/Tenements	Location	Held at end of quarter	Acquired during quarter	Disposed during quarter
none				
Farm-out agreements/Tenements	Location	Held at end of quarter	Acquired during quarter	Disposed during quarter
none				

- END -

This report has been authorised by the Board of Directors of the Company

INVESTOR RELATIONS CONTACT

Andrej K. Karpinski - Executive Chairman
Australia: (08) 9474 6166
International: +61 8 9474 6166

ABOUT KORAB RESOURCES

Korab Resources Ltd is an international mining and exploration company with operations in Australia and Europe. Korab's projects include Winchester Magnesium Deposit at Batchelor in the Northern

¹ Bobrikovo Project is located in eastern Ukraine in the Donbas region. The accumulated capitalised expenditure on this Project has been written-off in full in the 2014 Annual Report at the consolidated entity level.



20 PROWSE STREET, WEST PERTH, WA, 6005, AUSTRALIA
PO BOX 1958, WEST PERTH, WA, 6872, AUSTRALIA
TEL (08) 9474 6166 FAX (08) 9322 6333
ACN 082 140 252





KORAB RESOURCES LIMITED

KORAB HOUSE

www.korab.com.au

Issued Capital

Issued Shares: 367 Mln

Last Price: 2.7 cents

Capitalisation: \$10 Mln

Listing Code

ASX: KOR

Directors

Andrej K. Karpinski

Executive Chairman
Executive Director

Anthony G. Wills

Non-executive Director
(Independent)

Alicja Karpinski

Non-executive Director

Projects

Winchester

(Rum Jungle, NT)

Magnesium

Sundance

(Rum Jungle, NT)

Gold, Silver, Tin

Batchelor & G. Alligator

(Rum Jungle, NT)

Gold, Silver, Zinc, Lead, Nickel,
Copper, Cobalt, Tin, Rare Earth
Oxides, Scandium, Lithium,
Manganese, Iron Ore, Uranium

Geolsec

(Rum Jungle, NT)

Phosphate
Rare Earth Oxides
Uranium

(Sub-leased to third party)

Mt. Elephant

(Ashburton, WA)

Gold, Copper

Bobrikovo

(Luhansk, UKRAINE)

Gold, Silver, Zinc, Lead,
Antimony

Territory of Australia, Geolsec phosphate and rare earth elements deposit also at Batchelor, and projects in Australia and overseas where gold, silver, copper, cobalt, nickel, lithium, scandium, lead, zinc, tin, manganese, uranium and other elements have been discovered. More information about Korab's projects can be sourced from Korab's website at www.korab.com.au. Korab's shares are traded on Australian Securities Exchange (ASX).

DISCLAIMER AND CAUTIONARY STATEMENT

Forward-looking statements are statements that are not historical facts. Words such as "expect(s)", "expected", "feel(s)", "believe(s)", "will", "may", "anticipate(s)", "should", "envisage(s)" and similar expressions are intended to identify such forward-looking information. This information includes, but is not limited to statements regarding future exploration results, resources, or reserves, and production. Anyone reading this report is cautioned not to place undue reliance on these forward-looking statements. All of such statements are subject to risks and uncertainties (many of which are difficult to predict and which generally are beyond the control of the Company) that could cause actual results to differ materially from those expressed in, or implied or projected by, the forward-looking information and statements. These risks and uncertainties include, but are not limited to: those relating to the interpretation of exploration results (including drill results), the geology, grade and continuity of mineral deposits and conclusions of economic evaluations; risks relating to possible variations in reserves, grade, mining dilution, ore loss, and recovery rates; risks relating to changes in project financial and technical parameters; risks relating to the potential for delays in exploration programs, project evaluation/review, completion of feasibility studies and project development; risks related to commodity prices and foreign exchange rate fluctuations; risks related to failure to secure adequate financing on a timely basis and on acceptable terms; risks related to delays in obtaining governmental, or other permits and approvals; risks related to security of tenure; and other risks and uncertainties related to the Company's prospects, properties and business strategy. Any forward-looking information contained in this report is provided as of the date of this report. Except as required under applicable listing rules and securities laws, the Company does not intend, and does not assume any obligation, to update this forward-looking information.



20 PROWSE STREET, WEST PERTH, WA, 6005, AUSTRALIA
PO BOX 1958, WEST PERTH, WA, 6872, AUSTRALIA
TEL (08) 9474 6166 FAX (08) 9322 6333
ACN 082 140 252



PAGE 18

Appendix 5B

Mining exploration entity or oil and gas exploration entity quarterly cash flow report

Name of entity

KORAB RESOURCES LIMITED

ABN

17082140252

Quarter ended ("current quarter")

31 March 2023

Consolidated statement of cash flows		Current quarter \$A'000	Year to date (9 months) \$A'000
1.	Cash flows from operating activities		
1.1	Receipts from customers		
1.2	Payments for		
	(a) exploration & evaluation (expensed)	(5)	(5)
	(b) development		
	(c) production		
	(d) staff costs		
	(e) administration and corporate costs	(15)	(153)
1.3	Dividends received (see note 3)		
1.4	Interest received	1	3
1.5	Interest and other costs of finance paid		
1.6	Taxes paid		
1.7	Government grants and tax incentives		
1.8	Other (provide details if material)		
1.9	Net cash from / (used in) operating activities	(19)	(155)
2.	Cash flows from investing activities		
2.1	Payments to acquire or for:		
	(a) entities		
	(b) tenements		(83)
	(c) property, plant and equipment		
	(d) exploration & evaluation (capitalised)	(5)	(101)
	(e) investments		
	(f) other non-current assets		

Consolidated statement of cash flows		Current quarter \$A'000	Year to date (9 months) \$A'000
2.2	Proceeds from the disposal of:		
	(a) entities		
	(b) tenements	58	58
	(c) property, plant and equipment		
	(d) investments		
	(e) other non-current assets		
2.3	Cash flows from loans to other entities		
2.4	Dividends received (see note 3)		
2.5	Other (rounding error)	1	1
2.6	Net cash from / (used in) investing activities	54	(125)

3.	Cash flows from financing activities		
3.1	Proceeds from issues of equity securities (excluding convertible debt securities)		
3.2	Proceeds from issue of convertible debt securities		
3.3	Proceeds from exercise of options		
3.4	Transaction costs related to issues of equity securities or convertible debt securities		
3.5	Proceeds from borrowings		3,735
3.6	Repayment of borrowings	(426)	(4,050)
3.7	Transaction costs related to loans and borrowings	(4)	(12)
3.8	Dividends paid		
3.9	Other (reimbursed MT Elephant expenses)		10
3.10	Net cash from / (used in) financing activities	(430)	(317)

4.	Net increase / (decrease) in cash and cash equivalents for the period		
4.1	Cash and cash equivalents at beginning of period	613	815
4.2	Net cash from / (used in) operating activities (item 1.9 above)	(19)	(155)
4.3	Net cash from / (used in) investing activities (item 2.6 above)	54	(125)
4.4	Net cash from / (used in) financing activities (item 3.10 above)	(430)	(317)

Mining exploration entity or oil and gas exploration entity quarterly cash flow report

Consolidated statement of cash flows		Current quarter \$A'000	Year to date (9 months) \$A'000
4.5	Effect of movement in exchange rates on cash held		
4.6	Cash and cash equivalents at end of period	218	218

5.	Reconciliation of cash and cash equivalents at the end of the quarter (as shown in the consolidated statement of cash flows) to the related items in the accounts	Current quarter \$A'000	Previous quarter \$A'000
5.1	Bank balances	205	600
5.2	Call deposits		
5.3	Bank overdrafts		
5.4	Other (term deposits and refundable prepayments)	13	13
5.5	Cash and cash equivalents at end of quarter (should equal item 4.6 above)	218	613

6.	Payments to related parties of the entity and their associates	Current quarter \$A'000
6.1	Aggregate amount of payments to related parties and their associates included in item 1	-
6.2	Aggregate amount of payments to related parties and their associates included in item 2	-

Note: if any amounts are shown in items 6.1 or 6.2, your quarterly activity report must include a description of, and an explanation for, such payments.

Mining exploration entity or oil and gas exploration entity quarterly cash flow report

7.	Financing facilities	Total facility amount at quarter end \$A'000	Amount drawn at quarter end \$A'000
<p><i>Note: the term "facility" includes all forms of financing arrangements available to the entity.</i></p> <p><i>Add notes as necessary for an understanding of the sources of finance available to the entity.</i></p>			
7.1	Loan facilities	144	72
7.2	Credit standby arrangements	600	590
7.3	Other		
7.4	Total financing facilities	744	662
7.5	Unused financing facilities available at quarter end		82
7.6	<p>Include in the box below a description of each facility above, including the lender, interest rate, maturity date and whether it is secured or unsecured. If any additional financing facilities have been entered into or are proposed to be entered into after quarter end, include a note providing details of those facilities as well.</p> <p>Loan facility – lender: Alicja Karpinski, interest: 12% pa, unsecured. Not due prior to 31 March 2024 but can be repaid early at Korab's discretion without penalties. Due and payable immediately upon change of control.</p> <p>Credit standby arrangements – lender: Rheingold Investments Corporation Pty Ltd, interest: 12% pa, unsecured. Not due prior to 31 March 2024 but can be repaid early at Korab's discretion without penalties. Due and payable immediately upon change of control.</p>		

8.	Estimated cash available for future operating activities	\$A'000
8.1	Net cash from / (used in) operating activities (item 1.9)	(19)
8.2	(Payments for exploration & evaluation classified as investing activities) (item 2.1(d))	(5)
8.3	Total relevant outgoings (item 8.1 + item 8.2)	(24)
8.4	Cash and cash equivalents at quarter end (item 4.6)	218
8.5	Unused finance facilities available at quarter end (item 7.5)	82
8.6	Total available funding (item 8.4 + item 8.5)	300
8.7	Estimated quarters of funding available (item 8.6 divided by item 8.3)	12.5
<p><i>Note: if the entity has reported positive relevant outgoings (ie a net cash inflow) in item 8.3, answer item 8.7 as "N/A". Otherwise, a figure for the estimated quarters of funding available must be included in item 8.7.</i></p>		
8.8	<p>If item 8.7 is less than 2 quarters, please provide answers to the following questions:</p> <p>8.8.1 Does the entity expect that it will continue to have the current level of net operating cash flows for the time being and, if not, why not?</p> <p>Answer: N/A.</p> <p>8.8.2 Has the entity taken any steps, or does it propose to take any steps, to raise further cash to fund its operations and, if so, what are those steps and how likely does it believe that they will be successful?</p> <p>Answer: N/A</p>	

Mining exploration entity or oil and gas exploration entity quarterly cash flow report

8.8.3 Does the entity expect to be able to continue its operations and to meet its business objectives and, if so, on what basis?

Answer: N/A

Note: where item 8.7 is less than 2 quarters, all of questions 8.8.1, 8.8.2 and 8.8.3 above must be answered.

Compliance statement

- 1 This statement has been prepared in accordance with accounting standards and policies which comply with Listing Rule 19.11A.
- 2 This statement gives a true and fair view of the matters disclosed.

28 April 2023

Date:

By the Board of Directors of the Company

Authorised by:
(Name of body or officer authorising release – see note 4)

Notes

1. This quarterly cash flow report and the accompanying activity report provide a basis for informing the market about the entity's activities for the past quarter, how they have been financed and the effect this has had on its cash position. An entity that wishes to disclose additional information over and above the minimum required under the Listing Rules is encouraged to do so.
2. If this quarterly cash flow report has been prepared in accordance with Australian Accounting Standards, the definitions in, and provisions of, *AASB 6: Exploration for and Evaluation of Mineral Resources* and *AASB 107: Statement of Cash Flows* apply to this report. If this quarterly cash flow report has been prepared in accordance with other accounting standards agreed by ASX pursuant to Listing Rule 19.11A, the corresponding equivalent standards apply to this report.
3. Dividends received may be classified either as cash flows from operating activities or cash flows from investing activities, depending on the accounting policy of the entity.
4. If this report has been authorised for release to the market by your board of directors, you can insert here: "By the board". If it has been authorised for release to the market by a committee of your board of directors, you can insert here: "By the [name of board committee – eg Audit and Risk Committee]". If it has been authorised for release to the market by a disclosure committee, you can insert here: "By the Disclosure Committee".
5. If this report has been authorised for release to the market by your board of directors and you wish to hold yourself out as complying with recommendation 4.2 of the ASX Corporate Governance Council's *Corporate Governance Principles and Recommendations*, the board should have received a declaration from its CEO and CFO that, in their opinion, the financial records of the entity have been properly maintained, that this report complies with the appropriate accounting standards and gives a true and fair view of the cash flows of the entity, and that their opinion has been formed on the basis of a sound system of risk management and internal control which is operating effectively.