



ASX ANNOUNCEMENT

2 May 2023



Hines Hill REE Drilling Completed

HIGHLIGHTS

- ❖ Follow up aircore drilling program completed at the Hines Hill REE Project
- ❖ 88 drillholes for 1,242 metres were drilled, ranging in depth from 2 metres to 24 metres
- ❖ 1,409 samples including duplicates and standards have been submitted and registered in at ALS Global Laboratory
- ❖ Results expected early June

White Cliff Minerals Limited (**White Cliff** or the **Company**) is pleased to provide an update on the Company's Hines Hill REE project in the Wheatbelt region, WA (**Figure 1**), where follow up drilling to the highly successful maiden aircore drilling program has been completed, with 1,409 samples (including duplicates and standards) now in at ALS Laboratories in Perth. Results are expected in around 4 to 5 weeks.

Commenting on the completion of follow up aircore drilling, White Cliff Technical Director Ed Mead said:

"It is pleasing to punch out the follow up program in such a short timeframe, and get the samples in to ALS Perth for assay. I look forward to the results and we can then refine the next steps to advance this project."

Hines Hill - REE Project

The Hines Hill REE project consists of two tenements (**Figure 1**), within the wheatbelt region, located about 200km east of Perth on the Great Eastern Highway. The tenement area of ~576Km² covers extensive broad acre grain growing properties.

Geochemical sampling by White Cliff has initially targeted two magnetic features tentatively interpreted to be carbonatite intrusions, although they may represent differential non-carbonatite intrusives (granitoids).

Drilling of the most north-eastern magnetic feature discovered shallow REE mineralisation (ASX release 16 January 2023) (**Figure 1**) within the clay horizon (**Figure 2**) and thought to be either enriched as Ionic absorption, or a granitoid with high REE background is weathering and the resulting clays have equivalent or higher REE content due to reduction associated with weathering. Further

ASX:WCN

wcminerals.com.au

White Cliff Minerals Limited
ABN 22 126 299 125

Level 8, 99 St Georges Tce, Perth WA 6000
PO Box 5638 St Georges Tce, Perth WA 6831

T + 61 8 9486 4036
F + 61 8 9486 4799

drilling and assay results will refine the geological model.

Follow up drilling which consisted of 88 holes and 11409 samples has now been completed with results due in 4 to 5 weeks.

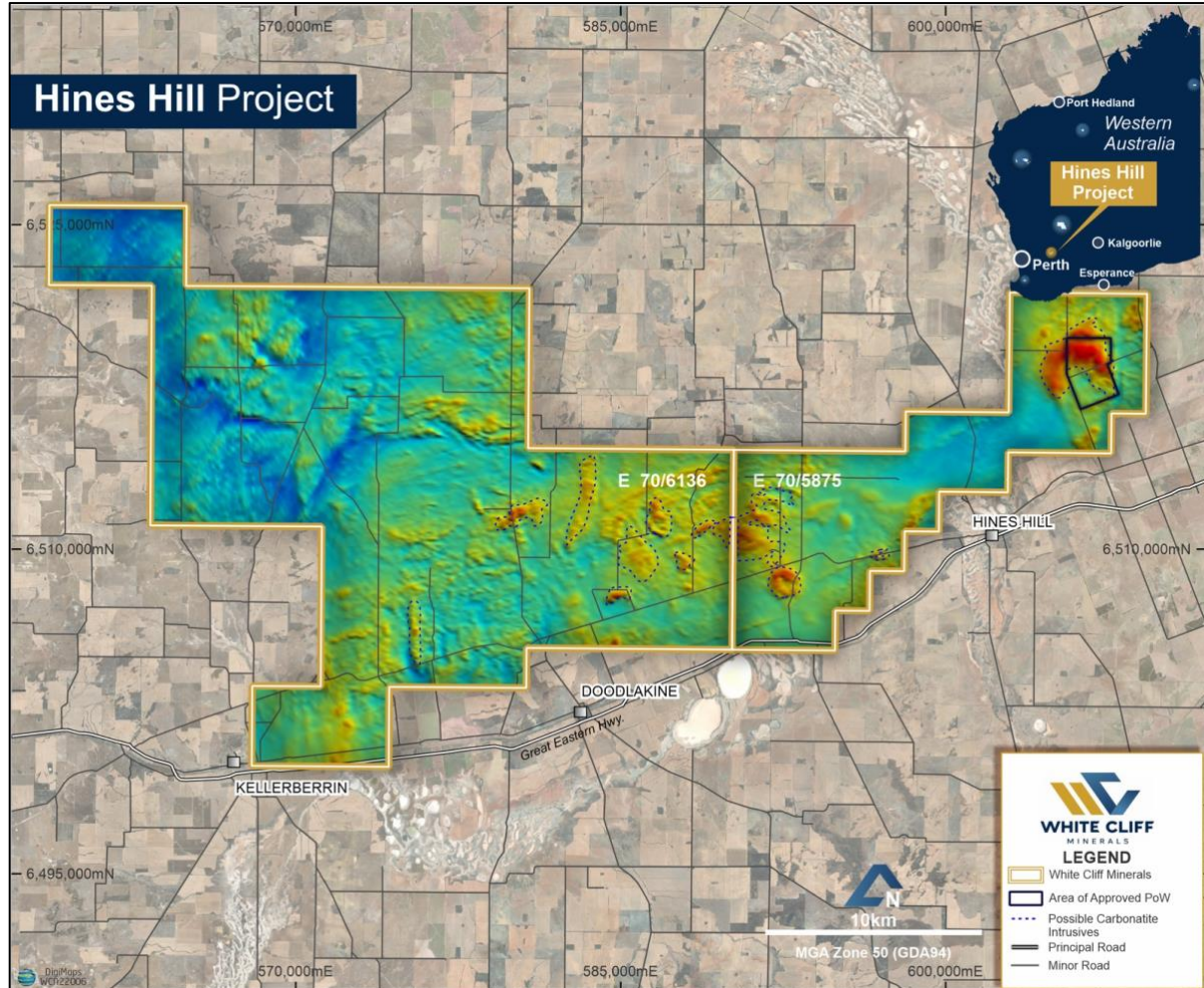


Figure 1: Hines Hill REE Project location map in Western Australia, which covers ~576km².

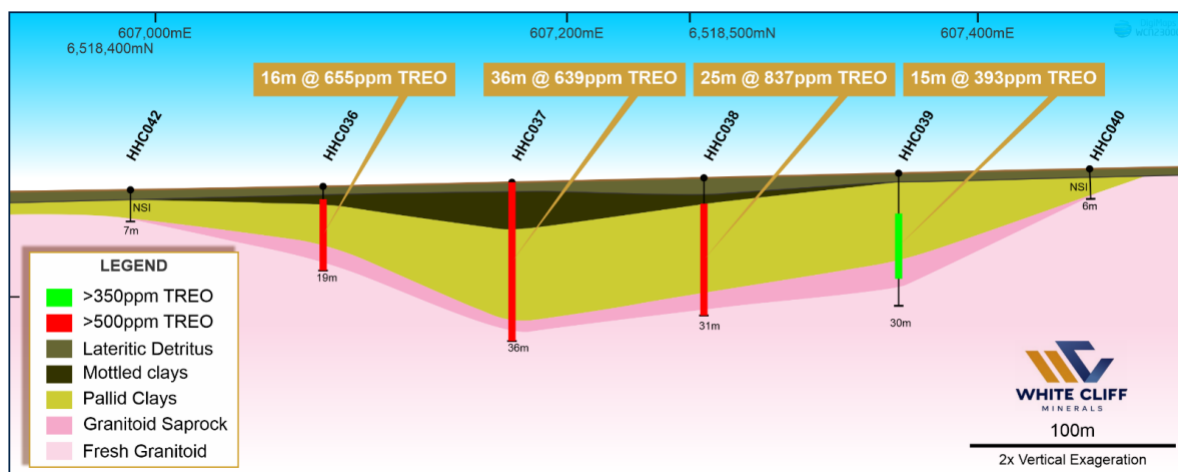


Figure 2: Hines Hill schematic drill section looking north, which formed the central area of follow up drilling with the 88 drill holes to ~20 metre depth.

ENDS

Further Information:

Dan Smith
Director
+61 8 9486 4036

Edward Mead
Director
+61 8 9486 4036

This announcement has been approved by the Board of White Cliff Minerals Limited.

Competent Persons Statement

The exploration results in this announcement were reported by the Company in accordance with listing rule 5.7 on 16 January 2023. The Company confirms it is not aware of any new information or data that materially affects the information included in the previous announcements.