

15 June 2023

LITHIUM EXPLORATION CONTINUES AT ANDOVER WEST

- ↳ **Ground reconnaissance and sampling of pegmatites at Andover West project continuing**
- ↳ **Results from initial samples pending**
- ↳ **Potential for lithium bearing pegmatites across Andover project tenement**
- ↳ **FLEM survey work aimed at uncovering additional drill targets for Ni/Cu mineralisation is completed with results pending**

Errawarra Resources Ltd (ASX:ERW) (**Errawarra** or the **Company**) is pleased to provide an update on exploration activities at its Andover West project in Western Australia's Pilbara region.

Tom Reddicliffe, Executive Chairman commented: "We are encouraged by the presence of further pegmatites on the Andover West project tenement with sampling of targets continuing. We are also pleased with the results achieved by our neighbour, Azure Minerals Ltd and their continued success in discovering and drilling for lithium, with the latest results being outstanding¹. We are very much excited by what the Pilbara region keeps delivering to the market and we look forward to continuing with our exploration activity".

ANDOVER WEST PEGMATITES

The Company is continuing with its exploratory work on the Andover West project for lithium bearing pegmatites which is focussed on the methodical field inspection and sampling of first and second priority pegmatite targets interpreted by Newexco using remote sensing datasets. Seven pegmatite samples were collected during the first field program conducted in May. These samples were dispatched to ALS Global in Perth and results are pending and will be reported when they come to hand. A second round of investigations involving the location and sampling of pegmatite targets is currently underway.

The pegmatite targets are located in the northwest corner of the Andover West project and in the same area where pegmatites were initially identified at surface, but which were also intersected and recognised in the drill core from the maiden drill program undertaken earlier this year (Figure 2). Although the pegmatite drill samples reported low level anomalous lithium in parts no significant assays were reported. The maiden drill program which was focussed on the testing of Ni-Cu conductor targets identified in both airborne and ground based VTEM and FLEM surveys². Azure has also reported intersecting pegmatite dykes during their Ni-Cu focussed drill programs.

¹ Refer to Azure Minerals Ltd, ASX Announcement, 13 Jun 2023.

² Refer to Errawarra Resources Ltd, ASX Announcement, 8 Feb 2023.

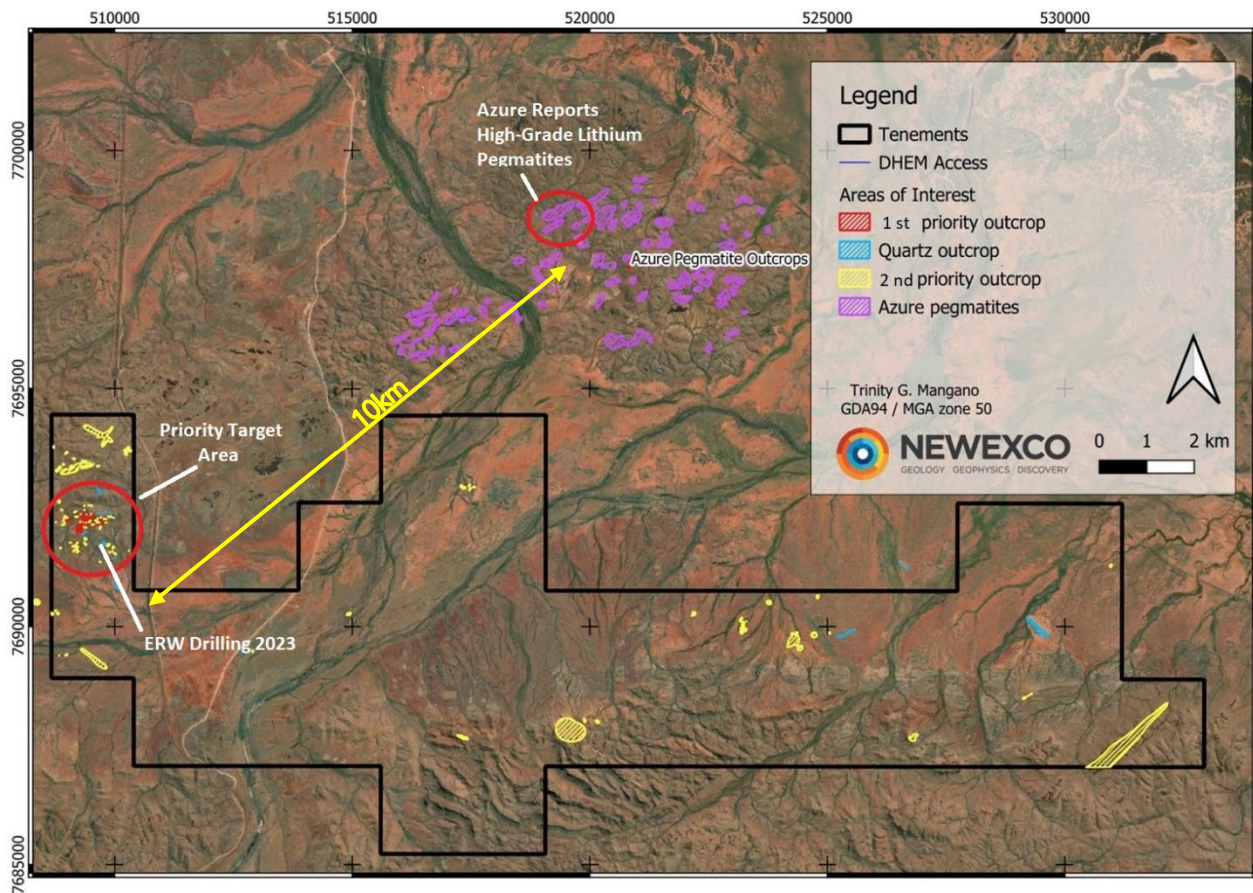


Figure 1. Andover West Project with Pegmatite Targets



Figure 2. Pegmatite intersected in Drill Core from Drill Hole 23EWDD-001³³

Errawarra has a significant and strategic tenement land holding of 100km² adjacent to Azure Minerals and their recent lithium discovery. This has given Errawarra confident that its ongoing exploration work will deliver further potential targets for testing. This region has been under-explored for battery metals including lithium.

The Pilbara and Andover region continues to demonstrate its prospectivity for lithium and other battery metals. A strong endorsement for the lithium potential of the area was given by SQM (Sociedad Quimica y Minera) in early 2023 when they invested \$20m into Azure to fast-track greenfield lithium exploration⁴.

³ Refer to Errawarra Resources Ltd, ASX Announcement, 22 Mar 2023.

⁴ Refer to Azure Minerals Ltd, ASX Announcement, 13 Mar 2023.



Figure 3. Pegmatite outcrop at Andover

ANDOVER WEST SURVEYS

The Company engaged its consultants to undertake additional follow up FLEM using a high-powered system aimed at penetrating to greater depths to identify targets with subtle conductive responses. The purpose of this program was to uncover additional targets for follow up drilling in the northern section of the tenement, based on the encouragement provided by the identification of a fertile Cu–Ni system as a consequence of the maiden drill program.

This survey is now complete, and the survey data is being interpreted by the company's consultants. Once all the data has been collated and reviewed, the Company can assess all potential targets and will look to undertake further drilling if warranted.

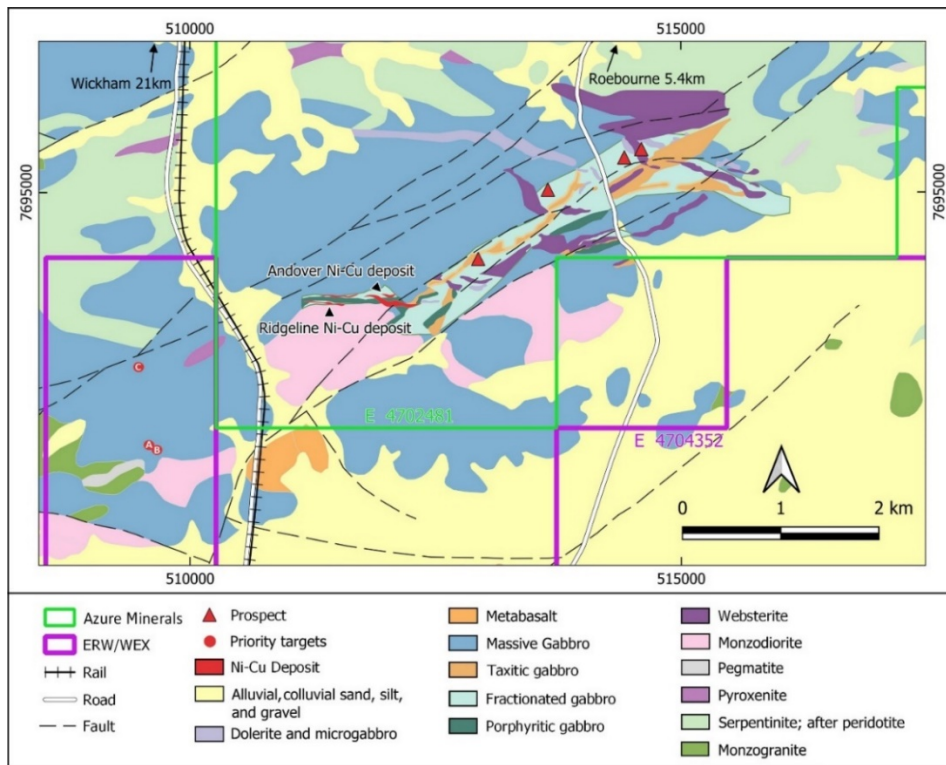


Figure 4. Andover West project showing previously drilled targets A, B and C

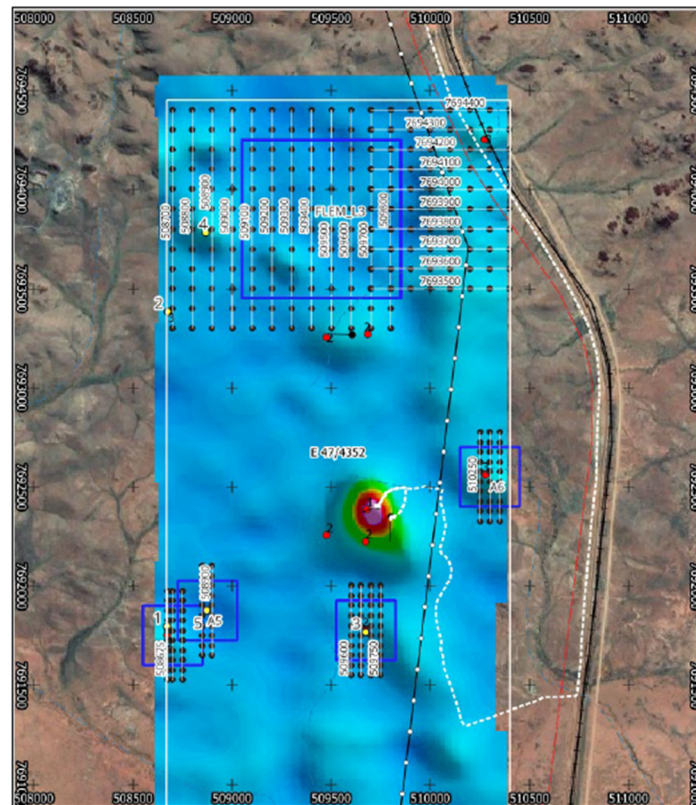


Figure 5. Follow-up FLEM Survey Areas at Andover West project

-ENDS-

This ASX announcement has been authorised for release by Thomas Reddicliffe, Executive Chairman on behalf of the Board of Directors.

For further information, please contact:

Tom Reddicliffe
Executive Chairman
Errawarra Resources Ltd
E: info@errawarra.com
T: +61 8 9322 3383

Competent Person Statement

Thomas Reddicliffe, BSc (Hons), MSc, a Director and Shareholder of the Company, is a Fellow of the AUSIMM, and has sufficient experience which is relevant to the style of mineralisation and type of deposit under consideration to qualify as a Competent Person as defined in the 2012 edition of the 'Australasian Code for Reporting of Exploration Results, Mineral Resources and Ore Reserves'. Thomas Reddicliffe consents to the inclusion in the report of the information in the form and context in which it appears.