



**ROX**  
RESOURCES

# Investor Presentation Gold Coast Investment Showcase 2023

21 June 2023

Robert Ryan

Managing Director

*Exploring and Developing the High-Grade Youanmi Gold Project*



# Disclaimers and Competent Person Statement



## Forward-Looking Statements

This presentation has been prepared by Rox Resources Limited. This document contains background information about Rox Resources Limited current at the date of this presentation. The presentation is in summary form and does not purport to be all inclusive or complete. Recipients should conduct their own investigations and perform their own analysis in order to satisfy themselves as to the accuracy and completeness of the information, statements and opinions contained in this presentation.

This presentation is for information purposes only. Neither this presentation nor the information contained in it constitutes an offer, invitation, solicitation or recommendation in relation to the purchase or sale of shares in any jurisdiction.

This presentation may not be distributed in any jurisdiction except in accordance with the legal requirements applicable in such jurisdiction. Recipients should inform themselves of the restrictions that apply in their own jurisdiction. A failure to do so may result in a violation of securities laws in such jurisdiction.

This presentation does not constitute investment advice and has been prepared without taking into account the recipient's investment objectives, financial circumstances or particular needs and the opinions and recommendations in this presentation are not intended to represent recommendations of particular investments to particular persons. Recipients should seek professional advice when deciding if an investment is appropriate. All securities transactions involve risks, which include, amongst others, the risk of adverse or unanticipated market, financial or political developments.

To the fullest extent permitted by law, Rox Resources Limited, its officers, employees, agents and advisers do not make any representation or warranty, express or implied, as to the currency, accuracy, reliability or completeness of any information, statements, opinions, estimates, forecasts or other representations contained in this presentation. No responsibility for any errors or omissions from this presentation arising out of negligence or otherwise is accepted.

This presentation may include forward-looking statements. Forward-looking statements are only predictions and are subject to risks, uncertainties and assumptions which are outside the control of Rox Resources Limited. Actual values, results or events may be materially different to those expressed or implied in this presentation. Given these uncertainties, recipients are cautioned not to place reliance on forward looking statements. Any forward-looking statements in this presentation speak only at the date of issue of this presentation. Subject to any continuing obligations under applicable law and the ASX Listing Rules, Rox Resources Limited does not undertake any obligation to update or revise any information or any of the forward-looking statements in this presentation or any changes in events, conditions or circumstances on which any such forward looking statement is based.

Refer to Rox Resources Limited ASX release 19 October 2022, for the Youanmi Gold Project Scoping Study details. Rox Resources Limited confirms that it is not aware of any new information or data that materially affects the information included in that release. All material assumptions and technical parameters underpinning that release continue to apply and have not materially changed.

## Competent Person Statements

### Exploration Results

The information in this report that relates to previous Exploration Results was prepared and first disclosed under the JORC Code 2012 and has been properly and extensively cross-referenced in the text to the date of the original announcement to the ASX.

Where reference is made to previous releases of exploration results in this announcement, the Company confirms that it is not aware of any new information or data that materially affects the information included in those announcements and all material assumptions and technical parameters underpinning the exploration results included in those announcements continue to apply and have not materially changed.

The information in this report that relates to previous Exploration Results was prepared and first disclosed under the JORC Code 2012 and has been properly and extensively cross-referenced in the text to the date of the original announcement to the ASX.

### Resource Statements

The Statement of Estimates of Mineral Resources for the Youanmi Near Surface Resource was reported by Rox in accordance with ASX Listing Rule 5.8 in the announcement released to the ASX on 20th April 2022. Rox confirms it is not aware of any new information or data that materially affects the information included in the previous announcements and that all material assumptions and technical parameters underpinning the estimates in the previous announcements continue to apply and have not materially changed.

The Statement of Estimates of Mineral Resources for the Youanmi Underground Resource was reported by Rox in accordance with ASX Listing Rule 5.8 in the announcement released to the ASX on 20th January 2022. Rox confirms it is not aware of any new information or data that materially affects the information included in the previous announcements and that all material assumptions and technical parameters underpinning the estimates in the previous announcements continue to apply and have not materially changed.

The Statement of Estimates of Mineral Resources that relates to gold Mineral Resources for the Mt Fisher – Mt Eureka Project was reported by Rox in accordance with ASX Listing Rule 5.8 in the announcement released to the ASX on 2 November 2022. Rox confirms it is not aware of any new information or data that materially affects the information included in the previous announcements and that all material assumptions and technical parameters underpinning the estimates in the previous announcements continue to apply and have not materially changed.

### International Financial Reporting Standards

This announcement contains certain financial measures relating to the Scoping Study that are not recognised under International Financial Reporting Standards (IFRS). Although the Company believes these measures provide useful information about the financial forecasts derived from the Scoping Study, they should not be considered in isolation or as a substitute for measures of performance or cash flow prepared in accordance with IFRS. As these measures are not based on IFRS, they do not have standardised definitions and the way the Company calculates these measures may not be comparable to similarly titled measures used by other companies. Consequently, undue reliance should not be placed on these measures.

### Other

All financial results are provided in Australian dollars and are in 100% terms (Rox currently owns 70% of the OYG Joint Venture) unless stated otherwise.

# Building Rox's Value



## Simple Ownership

- 100% ownership of the Youanmi Gold Project (OYG), post Venus transaction
- Increased investor and capital markets appeal



## Significant Upside

- Game changing discoveries in near mine areas:
  - Paddy's Lode and Midway
- Regional areas opportunities (Linda Gossan, Sovereign and Currans Find)
- Significant potential upside to the Scoping Study



## High Grade Production Target

- High-grade production target, + 5g/t
- High quality, low arsenic gold concentrate
- Low capital expenditure pathway to market
- Gold concentrate a proven commercialisation strategy



## Ongoing Exploration

- Continuous news flow as assays received
- Follow up drilling at Paddy's Lode discovery
- Renewed focus on regional tenures post transaction with full targeting study to commence



We are pleased to align our reporting to the United Nations **Sustainable Development Goals (SDG's)**, the **Global Reporting Initiative's (GRI)** Standards and the **Task Force for Climate-related Financial Disclosures (TCFD)**

## SUSTAINABLE DEVELOPMENT GOALS



### 2023 Goals



Publish Sustainability insert within our Annual Report



Establish baseline measurements for our material topic



Review and re-set ESG goals for the material topics

# Project Location



- Youanmi Gold Project located approximately 480km northeast of Perth and Mt Fisher – Mt Eureka Gold Project approximately 140km southeast of Wiluna
- Located in the **central part of the Youanmi Greenstone Belt**, which is situated in the Southern Cross Province of the Archaean Yilgarn Craton in Western Australia, “Australia’s premier gold province”
- **Proven track record of production** with historical production of 667koz of gold grading 5.42g/t from open pit and underground operations
- Leverage off **existing site infrastructure and decline**
- Surrounded by **million-ounce mines and major gold producers**

# Corporate Information

Rox Resources Limited (ASX: RXL) is a West Australian focused gold exploration and development Company. It is in the process of consolidating gold interests under the Youanmi Gold Project and is expected to be 100% owner and operator of the project post transaction. Rox also owns the Mt Fisher Gold Project and has earned in 75% of Mt Eureka Project.

## Board and Management

Stephen Dennis	Non-Executive Chairman
Robert Ryan	Managing Director
John Mair	Non-Executive Director
Chris Hunt	Chief Financial Officer
Daniel Marchesi	General Manager – Studies
Travis Craig	Exploration Manager

### Post Transaction Additional Board Member<sup>1</sup>

Matthew Hogan	Non-Executive Director
---------------	------------------------

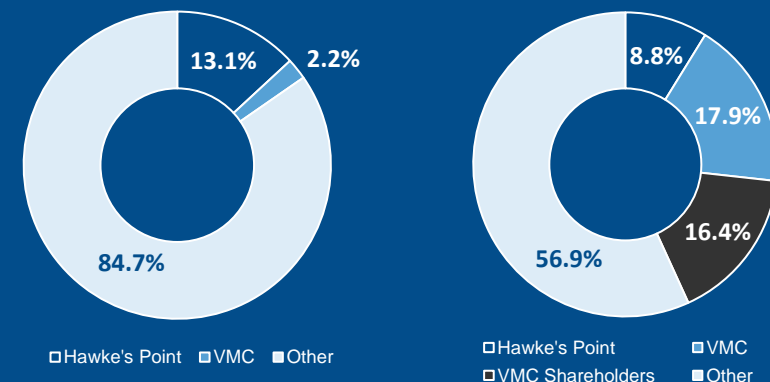
[www.roxresources.com.au](http://www.roxresources.com.au)



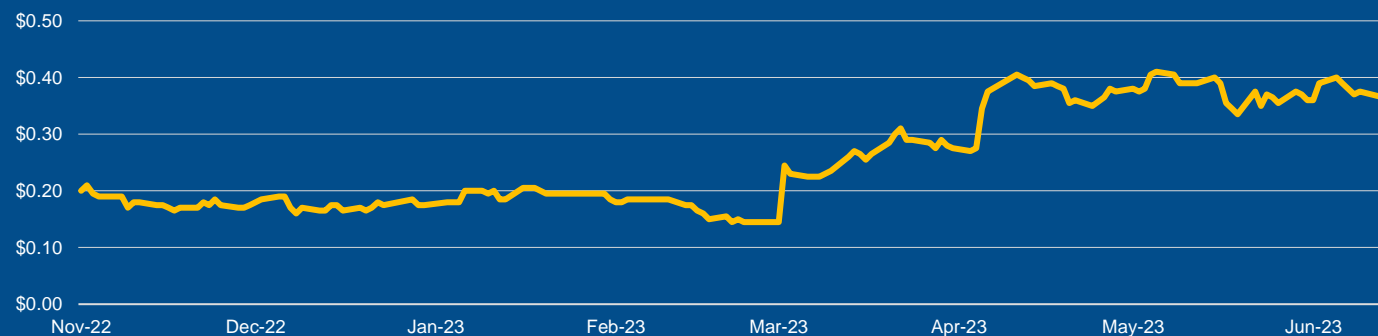
## Pro-forma Corporate Snapshot

	Current	Pro-forma <sup>1</sup>
Shares	224.4m	334.4m
Market Capitalisation (at 15/6/2023)	A\$80.8m	A\$120.4m
Options	16.1m	16.1m
Performance Rights	13.4m	13.4m
Cash (at 31/3/2023)	A\$8.2m	A\$8.2m

### Shareholders



## RXL Share Price

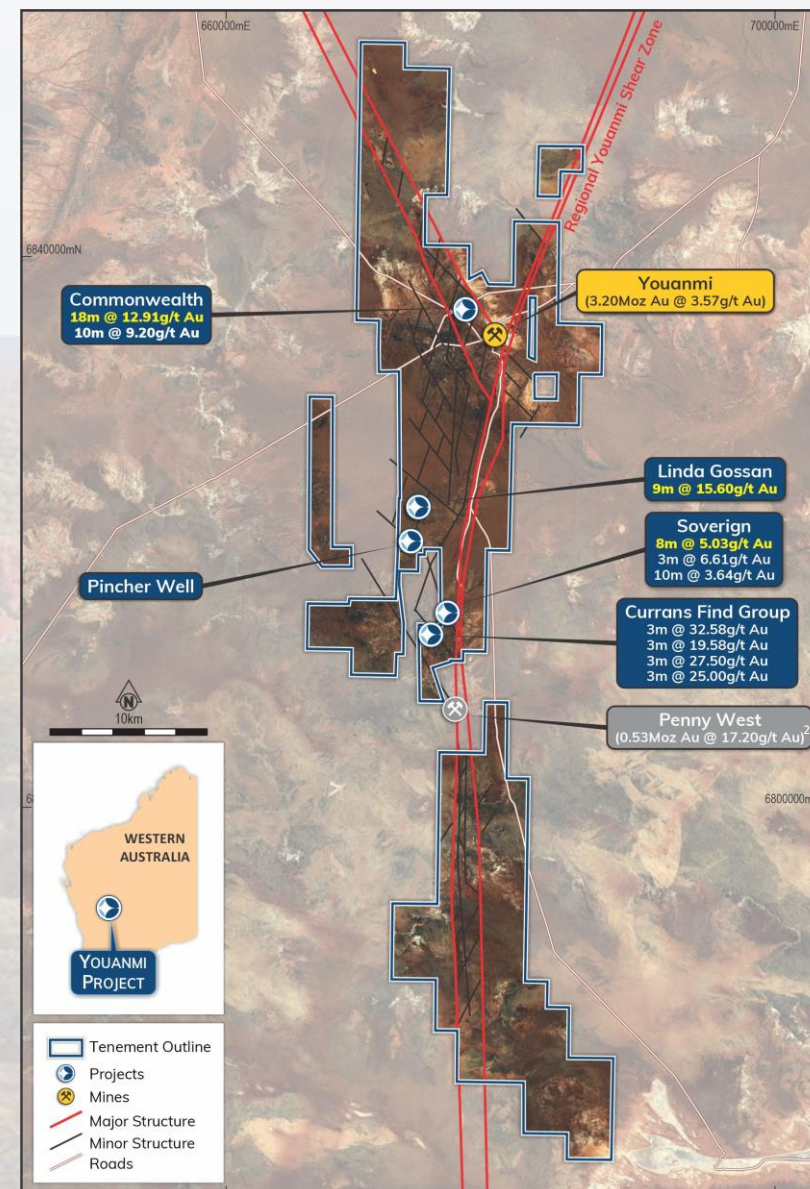


### Notes

1. Refer to ASX Announcements on 31 March 2023

# Consolidating the Youanmi Gold Belt

- Rox to acquire 100% interest in the OYG and 90% to 100% gold interests in the regional tenure
- Highly strategic consolidation of 697km<sup>2</sup> and >60km of strike of the Youanmi Shear Zone
- The belt is demonstrated to be host to extensive high-grade gold occurrences (Youanmi mine, Penny West etc) and is clearly highly fertile in gold endowment
- Near-mine exploration in the belt continues to be highly successful with high grade results from Midway and Paddy's Lode
- Regional exploration to ramp up with targets at Linda Gossan, Currans Find & Sovereign Hill



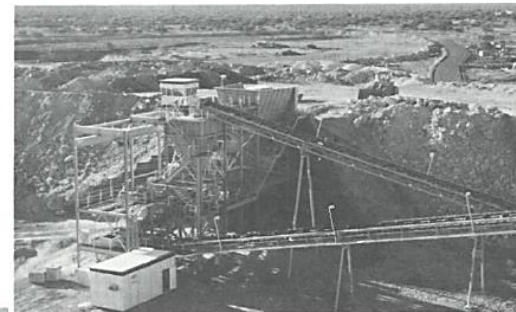
## Notes:

1. Refer to RXL ASX Announcements on 31 March 2023, 20 April 2022 and 17 April 2019  
Refer to Venus Metals Corporation Limited (ASX: VMC) announcements on 15 April 2019, 11 September 2020, 18 September 2020, and 10 October 2022
2. Refer to Ramelius Resources Limited (ASX: RMS) announcement on 13 September 2022

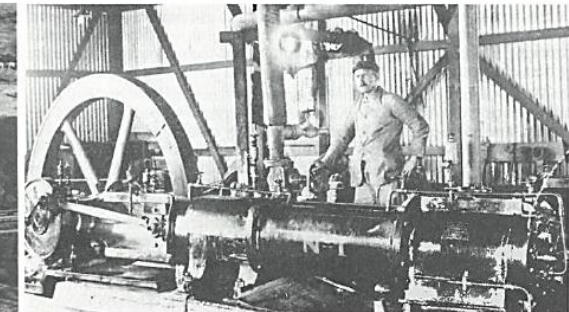
# Historical High-Grade Production

Over 660koz of historical production at high-grade, mine closed due to low gold price of ~A\$450/oz

- 1908 – 1921 Historical Shaft Mining  
Production **166koz @ 15.2g/t**
- 1937 – 1942 Historical Shaft Mining  
Production **95koz @ 8.1g/t**  
and **15koz @ 10.2g/t**
- 1987 – 1993 Open Pit Mining  
Production **263koz @ 3.1g/t**
- 1994 – 1997 Mechanized UG Mining  
Production **128koz @ 9.7g/t**
- 1997 Onward Operation closed in 1997  
due to prevailing gold price  
of ~A\$450/oz



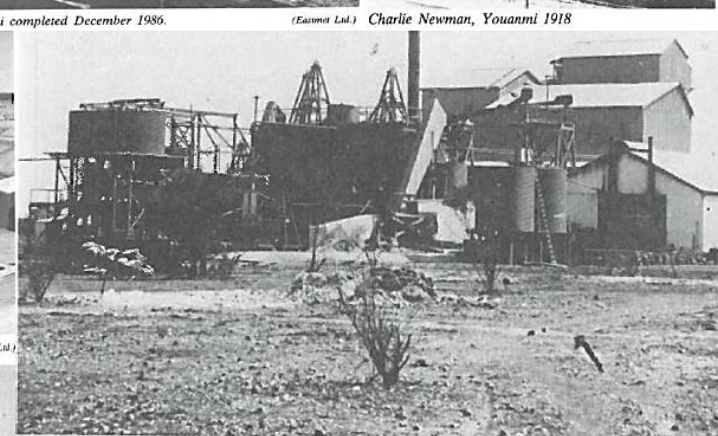
Crushing plant at Youanmi completed December 1936. (Eastrmet Ltd.)



Charlie Newman, Youanmi 1918 (Eastrmet Ltd.)



Youanmi Carbon in Leach Gold Plant completed December 1936. (Eastrmet Ltd.)



Youanmi Mine, 1914 (Eastrmet Ltd.)



Youanmi Mine, 1936 (p.)



Weathering structures, Youanmi Gold Mine, 1933



Youanmi State Battery, 1909



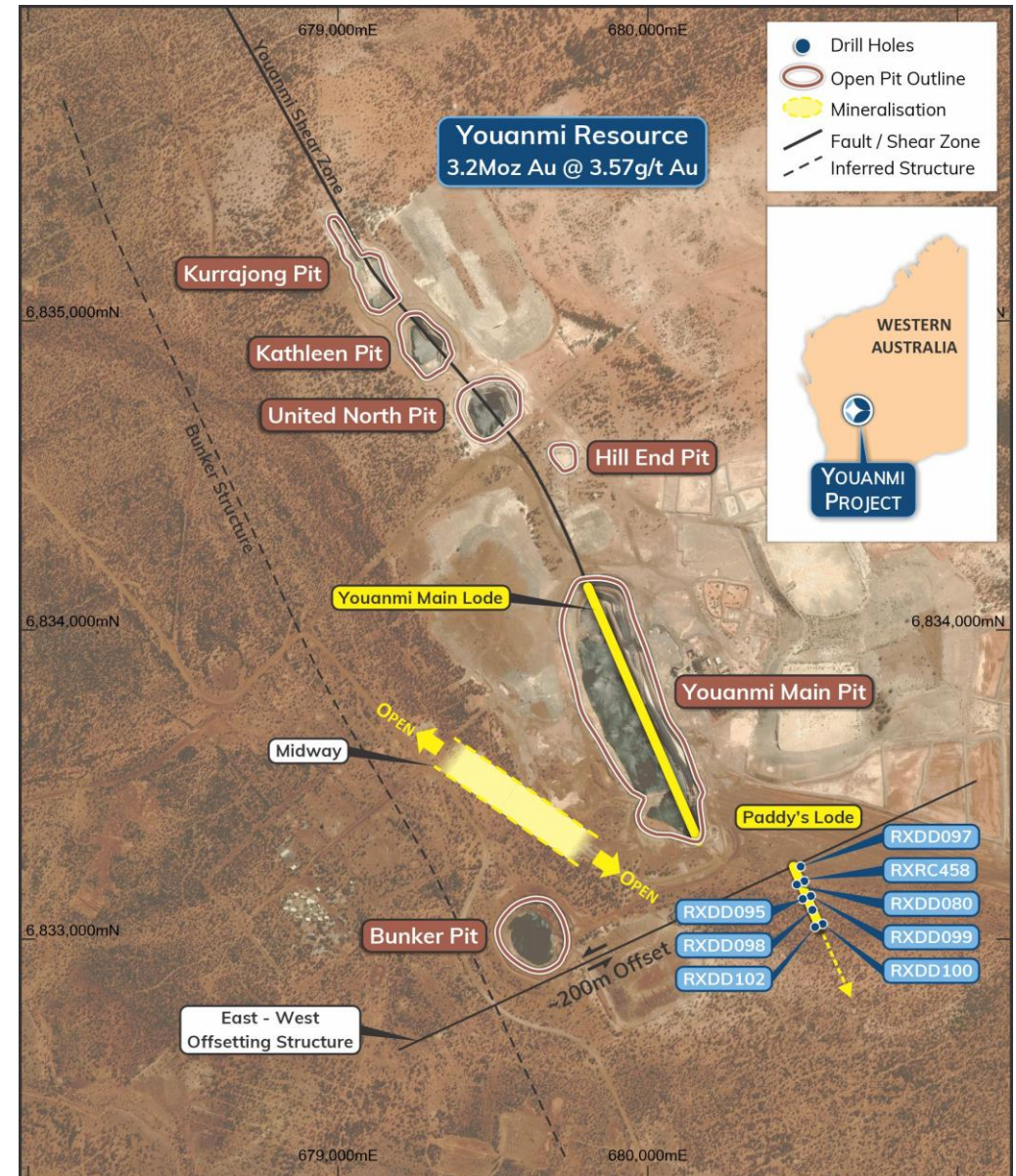
Staff residences & office, Youanmi 1913 (Eastrmet Ltd.)



# Youanmi South Discovery – Paddy's Lode

## Paddy's Lode Discovery

- **Bonanza intercept** in discovery hole RXRC458: **28m @ 34.81g/t Au** from 204m, including;
  - 18m @ 51.96g/t from 207m, including;
  - 10m @ 79.55g/t from 211m, including;
  - 3m @ 138.07g/t from 218m
- Follow-up drilling confirms the **discovery of Paddy's Lode**
- Initial results from the first four follow up diamond holes include:
  - RXDD080: 5.70m @ 8.26g/t Au from 233.30m,
  - RXDD095: 5.08m @ 9.56g/t Au from 225.80m
  - RXDD098: 3.32m @ 8.29g/t Au from 200.05m
- **Potential discovery of a 200m offset** of the Youanmi mineralised structure
- **Additional follow-up diamond holes** intersected the lode structure **to extend strike to 200m and remains open to the South**



### Notes

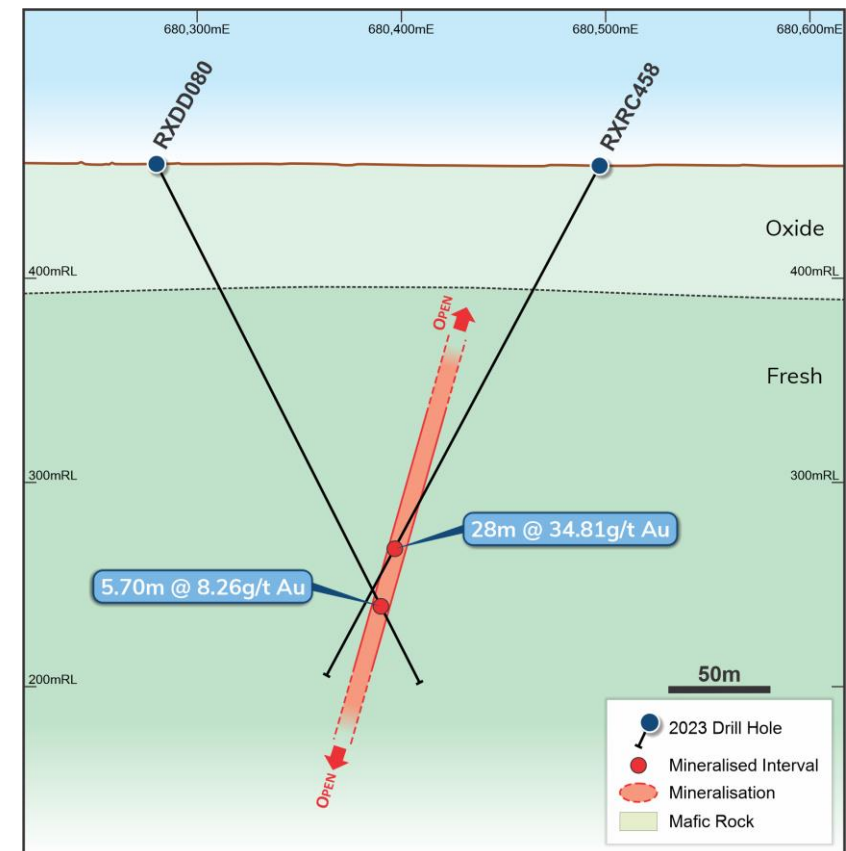
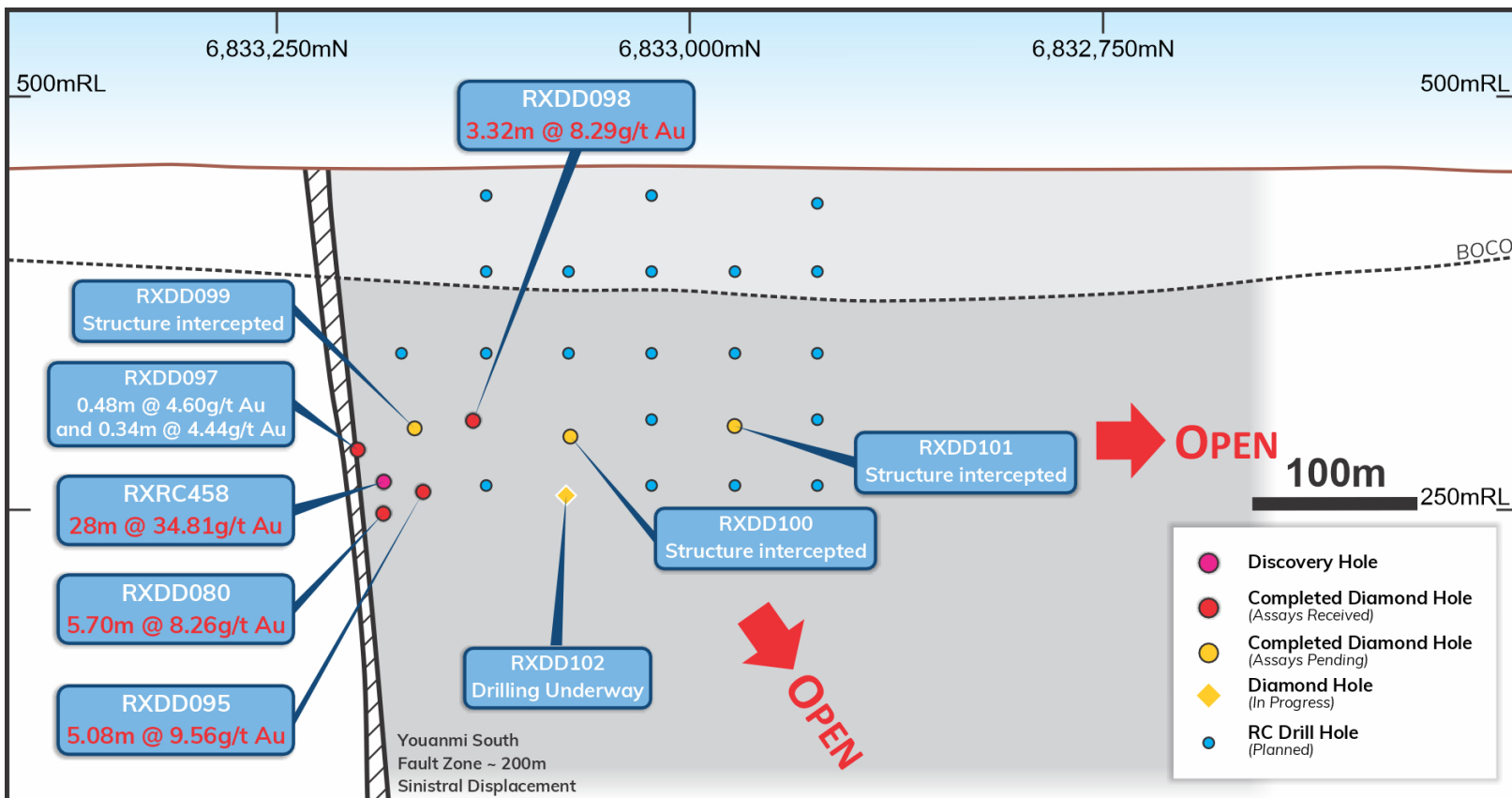
1. Refer to ASX Announcement 2 March 2023 and 16 May 2023

# Paddy's Lode Structure



## Paddy's Lode Potential

- The mineralised structure has been defined **over 200m in strike at 200m to 250m in depth**
- **Follow-up RC drilling** to commence to **expand mineralisation up and down dip**
- Southern extensions to Youanmi provide a **potential unmined, high-grade mining area**

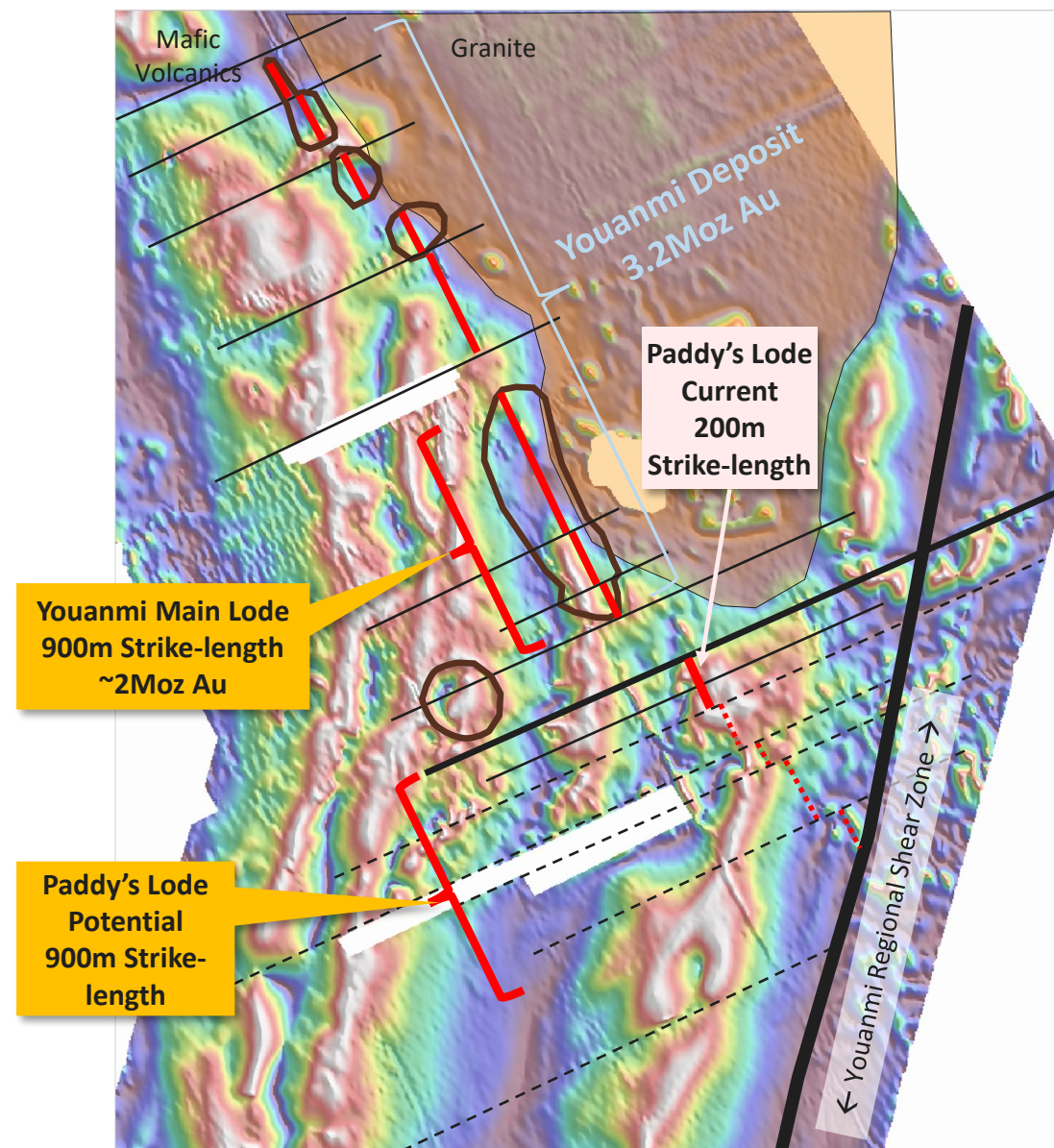


Notes  
1. Refer to ASX Announcement 2 March 2023 and 16 May 2023

# Paddy's Lode – Extensive Growth Potential

## Paddy's Lode Extensive Growth Potential

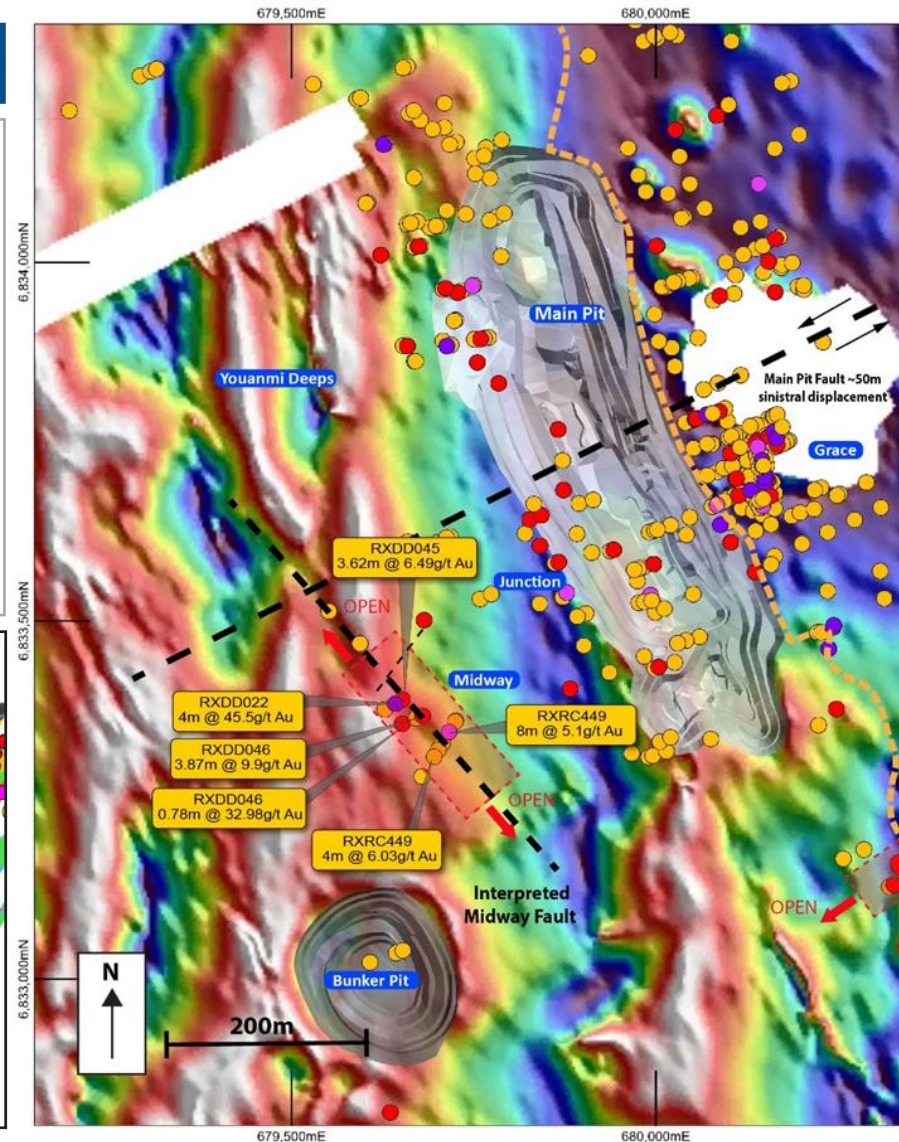
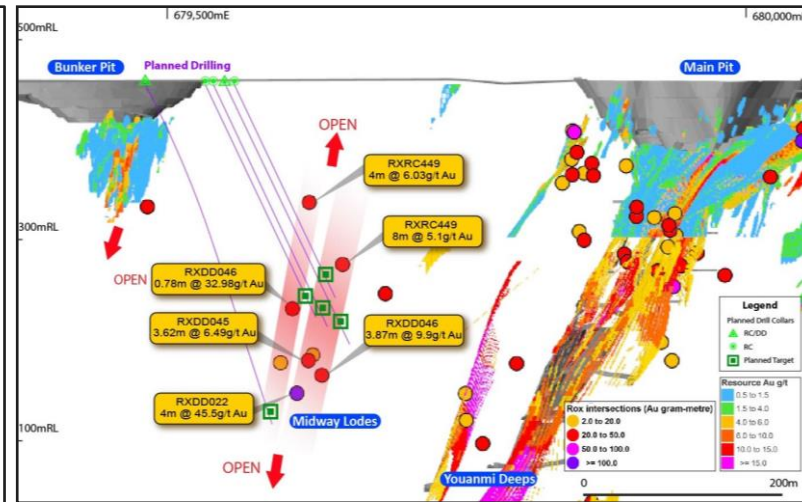
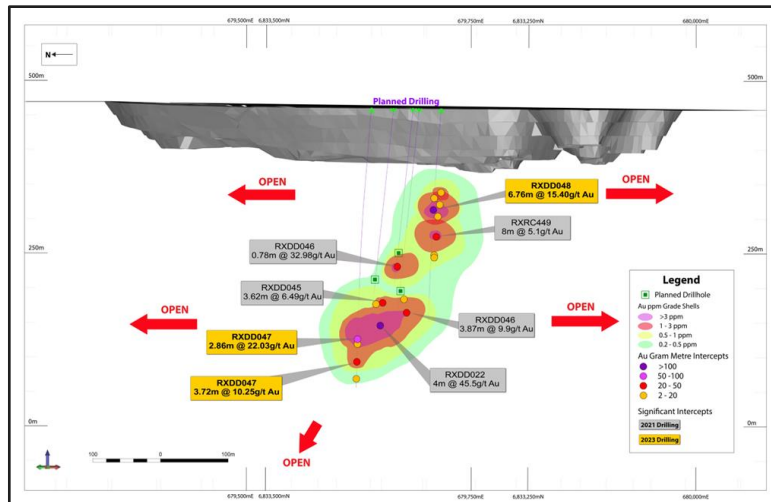
- Paddy's Lode structure has currently been intercepted along a 200m strike length.
- The 3.2Moz Au Youanmi deposit sits in a structurally complex setting with an array of E-W sinistral offsetting structures.
- Paddy's Lode sits in a similarly structurally complex setting with a series of interpreted E-W sinistral offsetting structures.
- The total **potential strike length of Paddy's Lode is 900m**, until it intersects the Youanmi Regional Shear Zone to the south. This is the **same strike length of the Youanmi Main Lode that hosts ~2Moz Au**.
- Exploration efforts are ongoing to trace the Paddy's Lode structure to the south.



# Midway – An Emerging Discovery

## Midway Discovery

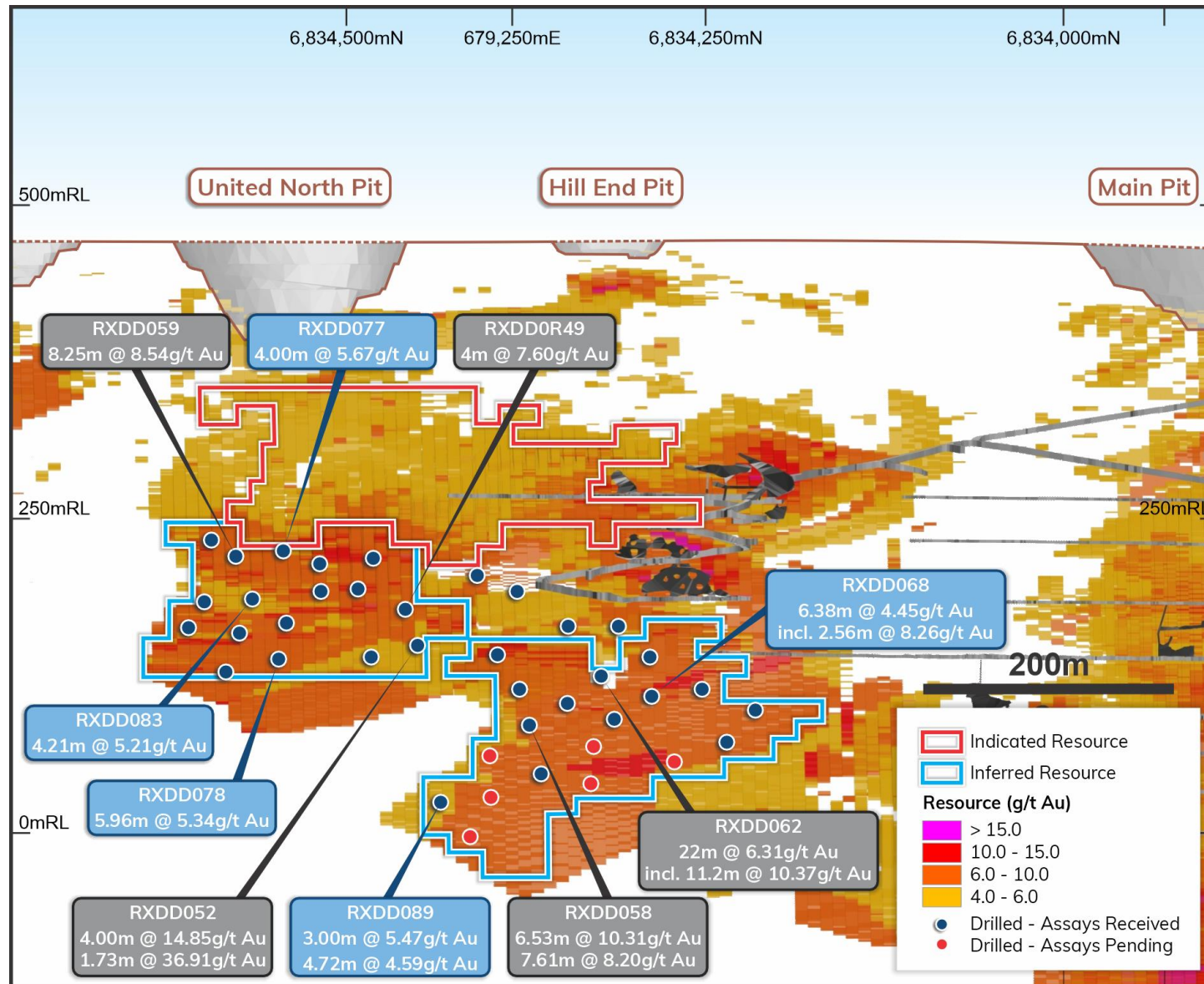
- **Newly defined exploration corridor** that is located within 300m of the hanging-wall of the Youanmi Main Lode and **open in all directions**
- Recent results:
  - RXDD047: 2.86m @ 22.03 g/t Au from 356.39m and;
  - RXDD047: 3.73m @ 10.25 g/t Au from 405.80m
  - RXDD048: 6.76m @ 15.40 g/t Au from 169.13m
- Drilling shown **thick continuous high-grade intersections**
- Potential to add **additional resources** to the Youanmi Gold Project



### Notes

1. Refer to ASX Announcement 6 September 2021, 18 November 2021, 8 June 2022, 16 January 2023 and 20 February 2023

# Link High-Grade Drilling Results



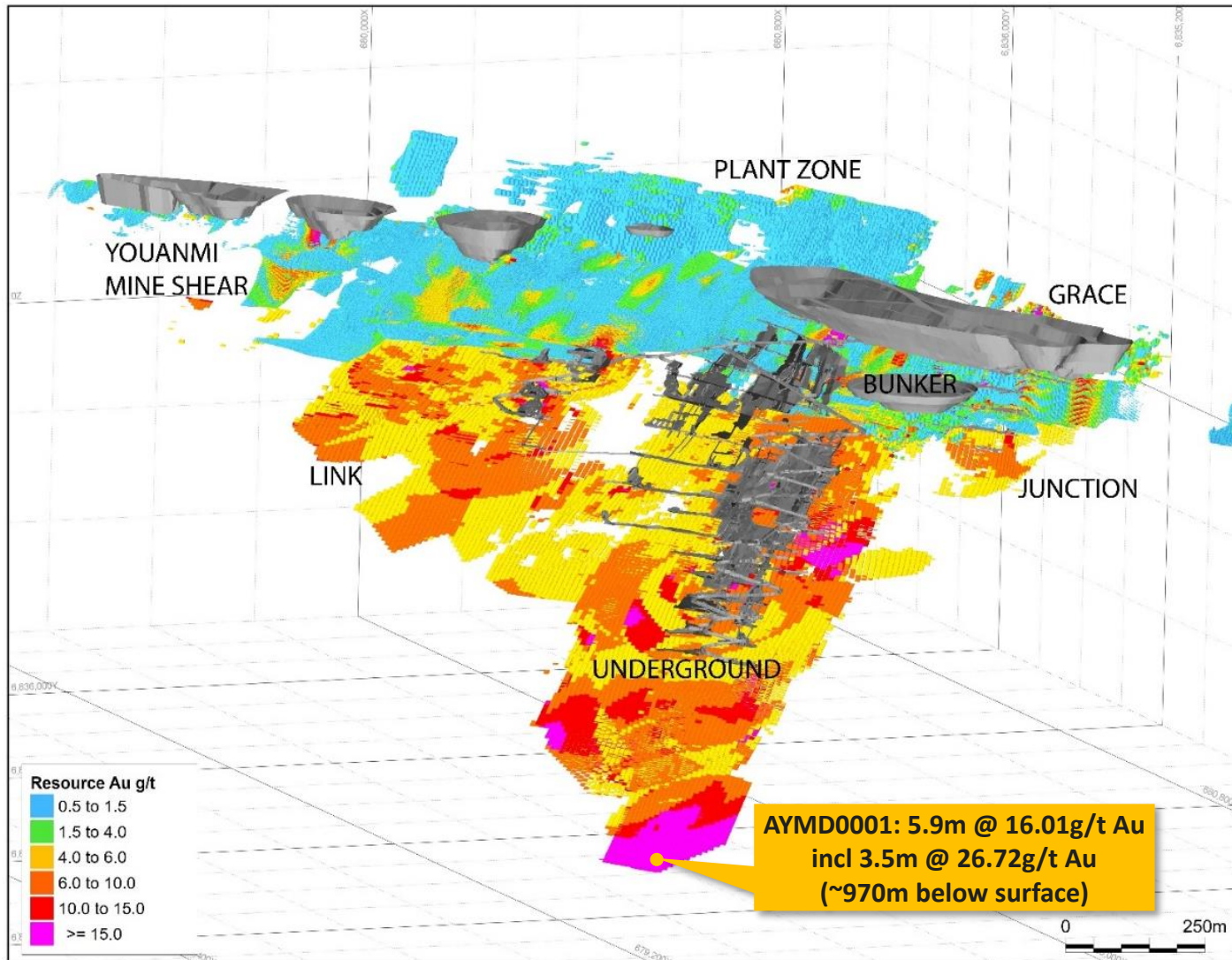
## Resource Development Drilling

- Drilling at Link **intersecting thick, high-grade mineralisation** with several standout intercepts:
  - RXDD052: 4.00m @ 14.85g/t Au
  - RXDD058: 6.53m @ 10.31g/t Au; and  
7.61m @ 8.20g/t Au
  - RXDD059: 8.25m @ 8.54g/t Au
  - RXDD062: 22.00m @ 6.31g/t Au, incl  
11.20m @ 10.37g/t Au
  - RXDD076: 4.26m @ 9.67g/t Au
- ➔ **Impressive grades and widths** that bode well for future underground mining operations
- The mineralisation at Link **remains open down-plunge**
- **Resource definition drilling** has now been **successfully completed** at both Link and Kathleen with final results expected in July

### Notes

1. Refer to ASX Announcement 5 April 2023, 26 April 2023 and 13 June 2023

# Youanmi Underground



## Youanmi Underground Overview

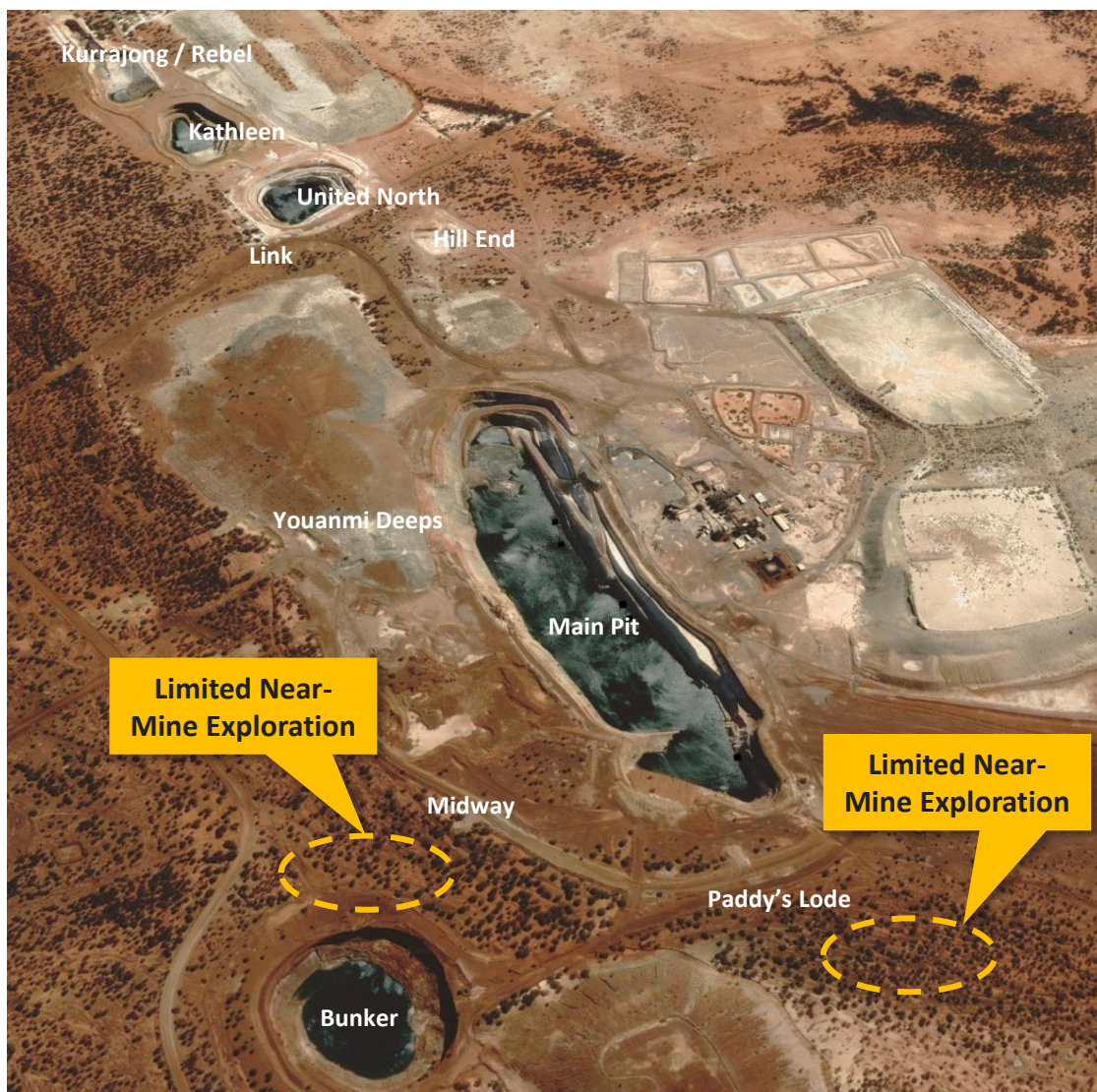
- Refers to the underground lodes mined by GMA during the 1990's. Above this lies the pre-1942 underground workings that contain remnant pillars left for structural support.
- Shear zone hosted, sulphide replacement style of mineralisation.
- Drilling highlights include:
  - RXXDD034: 0.73m @ 38.65g/t Au
  - RXDD031: 3.25m @ 32.22g/t Au and 4.38m @ 3.65g/t Au
  - RRXDD040: 4m @ 10.91g/t Au and 2.66m @ 11.6g/t Au
  - RXDD037: 1.12m @ 48.01g/t Au
  - RXDD036 : 2.09m @ 5.71g/t Au
  - RXRC418: 4m @ 4.78g/t Au
- Deepest hole (~970m below surface) AYMD0001: 5.9m @ 16.01g/t Au incl 3.5m @ 26.72g/t Au

### Notes

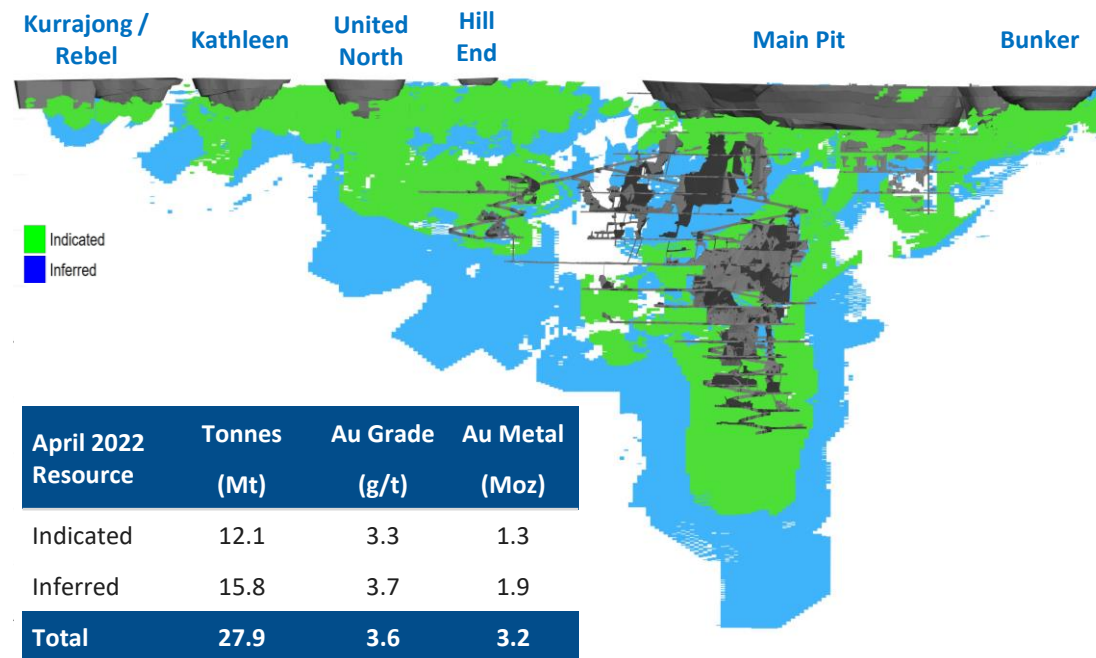
1. Refer to ASX Announcement 20 April 2022 and 17 April 2019

# Building Resource Confidence – Near Mine Exploration

## Limited Near-Mine Exploration



## Current Resource Statement – April 2022<sup>1</sup>



**Near-mine exploration drilling programme has commenced at Midway and Paddy's Lode. Initial results indicate potential to significantly contribute to the gold resource**

*Notes:*

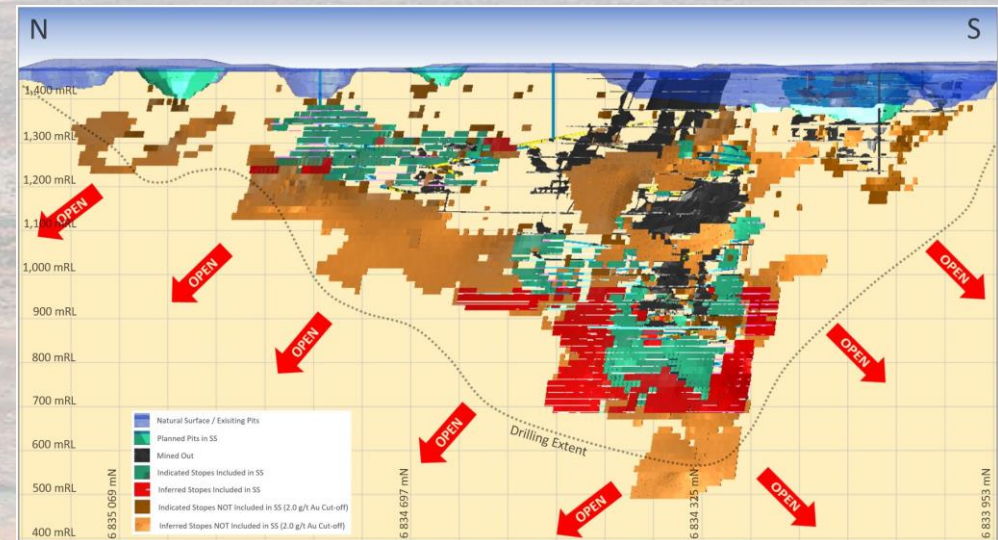
1. Refer to ASX Announcements on 20 April 2022

# Potential Upside to Scoping Study

## Scoping Study Key Metrics



## Potential Upside – Resource Stope Optimisation



## Processing Plant Layout



### Notes

1. Refer to ASX Announcement 19 October 2022

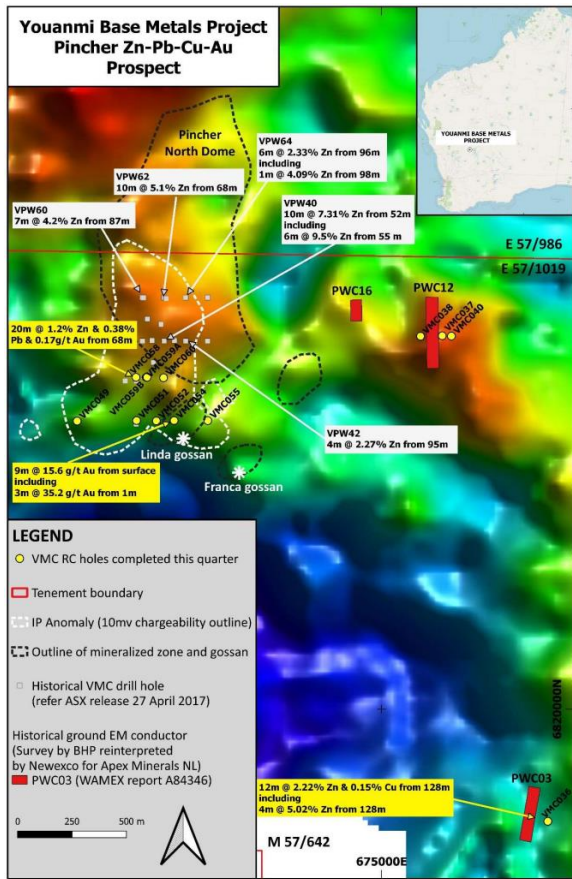


# Regional Drilling Programme



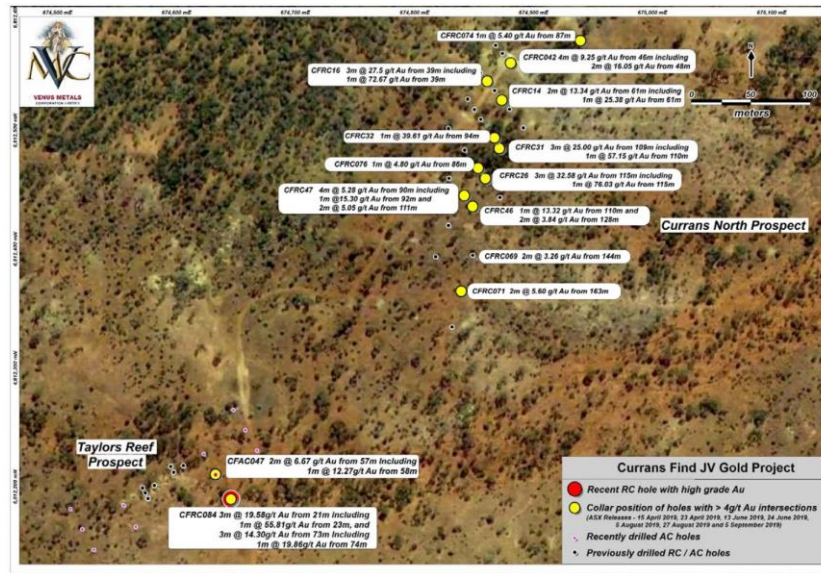
## Linda Gossan Prospect

- VMC054: **9m @ 15.6 g/t Au** from surface including **3m @ 35.2 g/t Au** from 1m



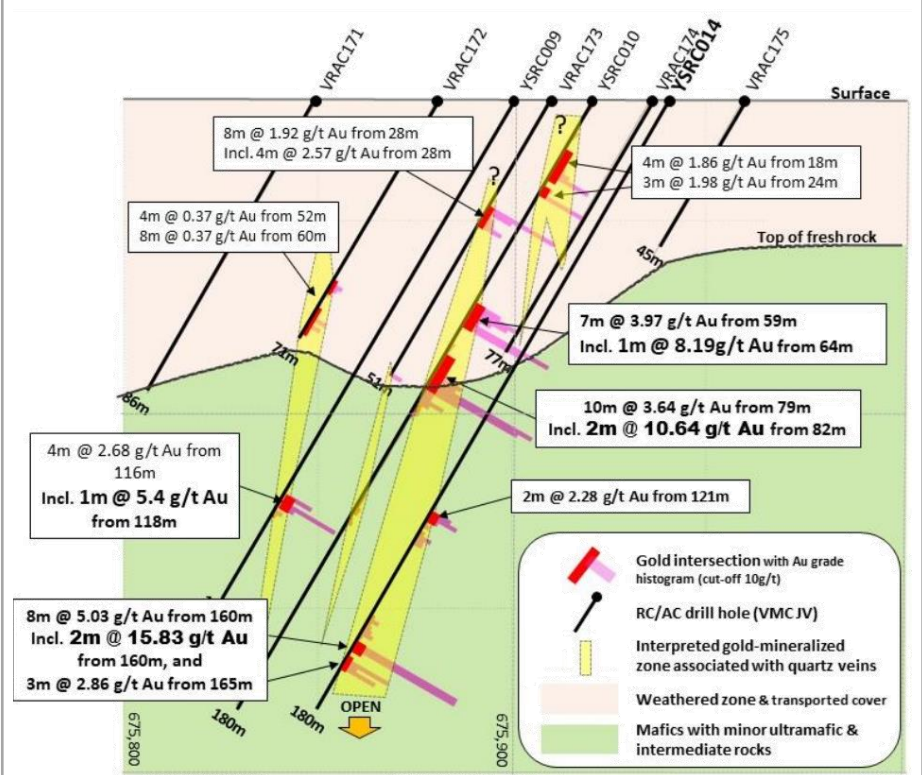
## Currans Find – Taylor’s Reef

- Historical production of 6,874 tons at a recovered average grade of 13 g/t Au
- Best results from the recent drilling at Taylor’s Reef Prospect include:
  - CFRC084 **3m @ 19.58g/t Au** from 21m incl. **1m @ 55.81g/t Au** from 23m, and **3m @ 14.30g/t Au** from 73m incl. **1m @ 19.86g/t Au** from 74m
  - CFAC047 **2m @ 6.67 g/t Au** from 57m incl. **1m @ 12.27g/t Au** from 58m



## Sovereign Prospect

- RC result:
  - YSRC014: **8m @ 5.03 g/t Au** from 160m including **2m @ 15.83 g/t Au** from 160m and **3m @ 2.86 g/t Au** from 165m



Notes  
 1. Refer to Venus Metals Corporation Limited (ASX: VMC) announcements: 15 April 2019, 11 September 2020, 18 September 2020, and 10 October 2022

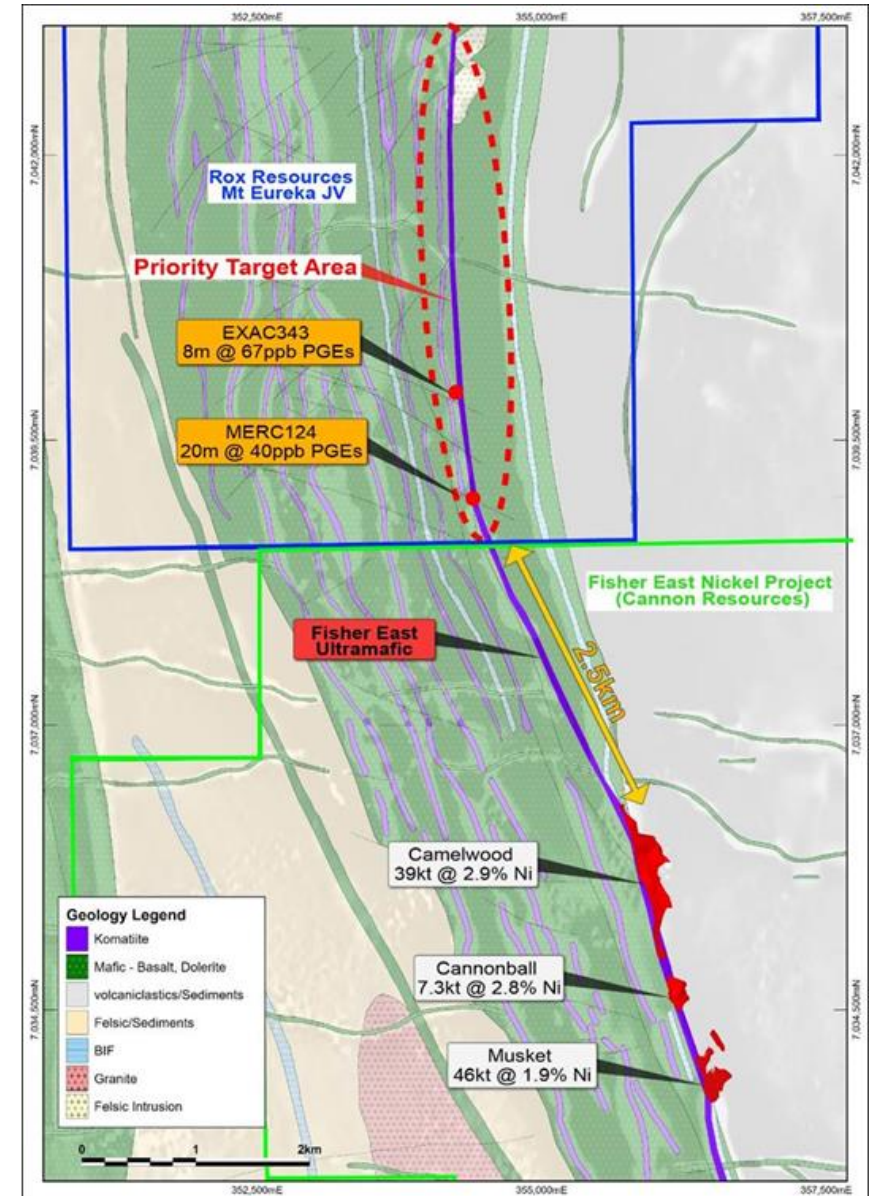
# Mt Fisher – Mt Eureka Gold Project (Non-Core Asset)

## Project Overview

- 850km<sup>2</sup> ground position in one of the **least explored greenstone belts** in the prolific Yilgarn Craton
- Located immediately along strike of **Cannon Resources' nickel deposits** (134kt of Ni at 1.8% Ni) with the host ultramafic unit extending onto Rox Resources Mt Eureka JV tenure
- Highly **prospective for gold and nickel mineralisation**
  - Comprised of 5 separate gold deposits with a total JORC Mineral Resource of **187koz at 1.65 g/t Au<sup>1</sup>**
  - Numerous ultramafic flows with associated **Ni-Cu-PGE anomalism** occur throughout the belt demonstrating potential for the project area to host **economically viable nickel deposits**
- Options to realise value from the Mt Fisher – Mt Eureka Gold Project are being actively pursued

### Notes

1. Refer to ASX Announcement 31 October 2022 and 2 November 2022



# Next Steps



## Corporate Transaction

- Finalise the consolidation of Youanmi Gold Project



## Resource Development and Exploration Drilling Programme Underway

- Resource definition drilling near completion
- Review and interpret drilling results at Paddy's Lode and Midway
- Review and update mineral resource



## Feasibility Work Ongoing

- Metallurgical test work to refine process selection
- Mine design and scheduling
- Process plant design and size to be determined



## Regional Exploration Program in Development Targeting New Discoveries

- Linda Gossan Project
- Currans Find – Penny North
- Sovereign
- Finding new high-grade “Penny West”





# THANK YOU

 Level 2, 87 Colin Street, West Perth, WA 6005

 (08) 9226 0044

 [admin@roxresources.com.au](mailto:admin@roxresources.com.au)

 [www.roxresources.com.au](http://www.roxresources.com.au)

