



ASX Announcement

27 June 2023

Notification of Expiry of Unlisted Options

Burley Minerals Ltd (ASX: **BUR**, "Burley" or "the Company") advises that 6,250,000 unlisted options with an exercise price of \$0.30 are scheduled to expire at 5.00pm WST on 5 July 2023 (Expiry Date). There is no obligation upon option holders to exercise their options, however if payment is not received by the Expiry Date the options will lapse and all rights under the options will cease at that time.

This announcement has been authorised for release by the board of Burly Minerals Limited.

For further information, please contact:

Lisa Wynne
Company Secretary
Burley Minerals Limited
+61 (8) 3228 6283
admin@burleyminerals.com.au

About Burley Minerals

Burley Minerals Ltd (**ASX: BUR**) is a well-funded, ASX-listed, Perth-based minerals explorer with Lithium and Iron Ore Projects, located within the World-Class Tier-1 provinces of Québec, Canada; and Western Australia. Burley acquired 100% ownership of the Chubb Lithium Project in Québec, Canada, and the Mt James and Dragon Lithium Projects in the Gascoyne region of Western Australia, in February 2023.

Burley's corporate strategy is to further expand its Canadian Lithium interests via the intended acquisition of the Bouvier Lithium Project, located just 14 Km from the Chubb Lithium Project.

Burley also owns a 70% interest in the Yerecoin Magnetite iron ore Project, located approximately 120km northeast of Perth, Western Australia, and which has a JORC 2012 compliant Inferred and Indicated Mineral Resource of 246.7Mt capable of producing a concentrate at >68% Fe¹.

Burley has the Cane Bore (exploration license application) in the world class Hamersley Iron Ore Province. The Cane Bore Prospect has 28kms of remnant outcropping Channel Iron Deposit (CID) mineralisation which on average is 400m wide.

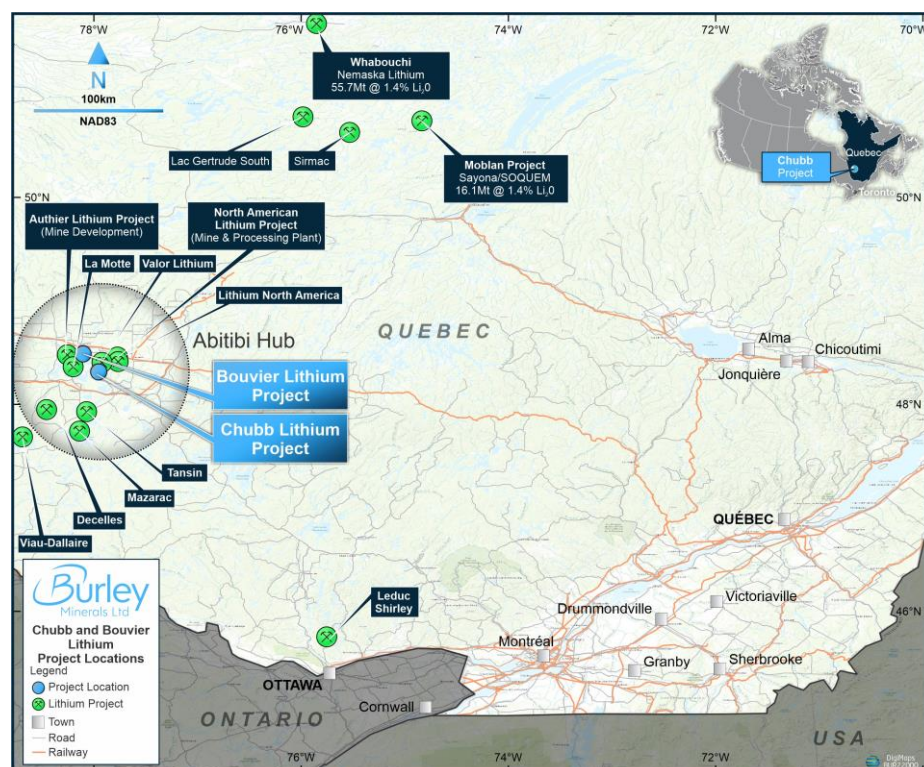


Figure 1: Location of the Chubb and Bouvier Lithium Projects and location respective of other significant lithium mines, concentrators, Infrastructure (road and rail) and ports¹

¹ Refer to Burley Minerals Ltd ASX Presentation dated 21 March 2023

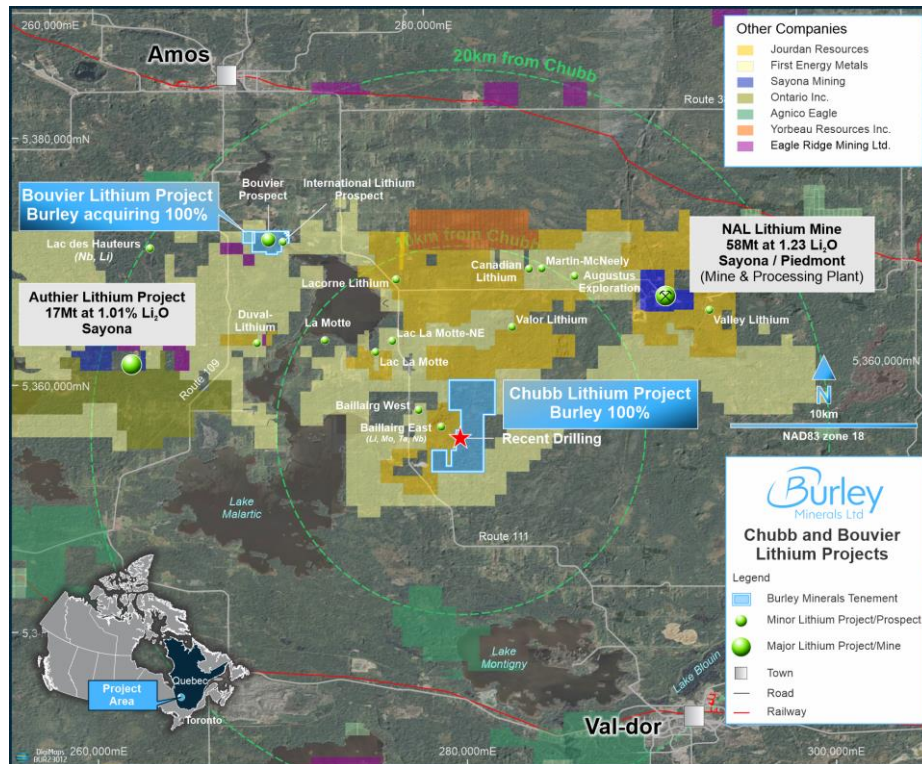


Figure 2: Location map of the Chubb and Bouvier Lithium showing proximity to the nearby NAL lithium mine and other company prospects.