

Exploring & Developing High -Grade Lithium Assets in North America

Investor Presentation

July 2023



Disclaimer

The presentation (in this projected form and as verbally presented) (**Presentation**) has been prepared by Patriot Lithium Limited (ACN 647 470 415) and is provided on the basis that none of the Company nor its respective officers, shareholders, related bodies corporate, partners, affiliates, employees, representatives and advisers make any representation or warranty (express or implied) as to the accuracy, reliability, relevance or completeness of the material contained in the Presentation and nothing contained in the Presentation is, or may be relied upon as a promise, representation or warranty, whether as to the past or the future. The Company hereby excludes all warranties that can be excluded by law.

The Presentation contains prospective material which is predictive in nature and may be affected by inaccurate assumptions or by known or unknown risks and uncertainties and may differ materially from results ultimately achieved.

The Presentation contains “forward-looking statements”. All statements other than those of historical facts included in the Presentation are forward-looking statements. Where the Company expresses or implies an expectation or belief as to future events or results, such expectation or belief is expressed in good faith and believed to have a reasonable basis. However, forward-looking statements are subject to risks, uncertainties and other factors, which could cause actual results to differ materially from future results expressed, projected or implied by such forward-looking statements. The Company does not undertake any obligation to release publicly any revisions to any “forward-looking statement”.

The Presentation contains general background information about the Company and its activities current as at the date of this presentation. The information in this Presentation is in summary form only and does not contain all the information necessary to fully evaluate any transaction or investment. It should be read in conjunction with the Company’s prospectus dated 20 October 2022 and any periodic and continuous disclosure announcements lodged with the ASX, which are available at www.asx.com.au and other publicly available information on the Company’s website at www.patriot-lithium.com.

Compliance Statement

The information in this presentation that relates to prior Exploration Results for the Projects of Patriot Lithium Limited is extracted from the following ASX Announcements lodged with ASX on 7 February 2023, 2 March 2023, 15 May 2023, 8 June 2023 which are available on the Company’s website www.patriot-lithium.com and the ASX website (ASX code: PAT). The Company confirms that it is not aware of any new information or data that materially affects the information included in the original market announcements and that all material assumptions and technical parameters underpinning the estimates in the market announcements continue to apply and have not materially changed. The Company confirm that form and context in which the Competent Person’s finding are presented have not been materially modified from the original market announcements.

Competent Persons’ Statements

The information in this presentation that relates to Exploration Results is based on information compiled and conclusions derived by Dr Oliver Kreuzer and Mr David Johnson. Mr Ralph Porter has reviewed the content and the rock and soil geochemical results presented.

Dr Kreuzer is a Member (#2762) and Registered Professional Geologist (RPGeo #10073) of the Australian Institute of Geoscientists (AIG) and a Member (#208656) of the Australasian Institute of Mining and Metallurgy (AusIMM). Dr Kreuzer is an employee of Patriot Lithium Limited and holds securities in the Company. Dr Kreuzer has sufficient experience which is relevant to the style of mineralisation and types of deposit under consideration and to the activity being undertaken to qualify as a Competent Person as defined in the 2012 Edition of the Joint Ore Reserves Committee (JORC) Australasian Code for Reporting of Exploration Results, Mineral Resources and Ore Reserves. Dr Kreuzer consents to the inclusion in the report of the matters based on his information in the form and context in which it appears.

Mr Johnson is a Member (#4358) of the Australian Institute of Geoscientists (AIG). Mr Johnson is an employee of Patriot Lithium Limited and holds securities in the Company. Mr Johnson has sufficient experience which is relevant to the style of mineralisation and types of deposit under consideration and to the activity being undertaken to qualify as a Competent Person as defined in the 2012 Edition of the Joint Ore Reserves Committee (JORC) Australasian Code for Reporting of Exploration Results, Mineral Resources and Ore Reserves. Mr Johnson consents to the inclusion in the report of the matters based on his information in the form and context in which it appears.

The information in this announcement that relates to the rock and soil geochemical results within this document has been reviewed by Mr Ralph Porter, a full-time employee of CSA Global Pty Ltd. Mr Porter is a professional geoscientist and Member of The Australian Institute of Geoscientists (#4836) and has sufficient experience relevant to the style of mineralisation and type of deposit under consideration, and to the activity which has been undertaken, to qualify as a Competent Person as defined in the 2012 Edition of the Joint Ore Reserves Committee (JORC) Australasian Code for Reporting of Exploration Results, Mineral Resources, and Ore Reserves. Mr Porter consents to the inclusion in this presentation of the matters based on this information in the form and context in which it appears.

North American High -Grade Lithium



Premium Locations

A diversified portfolio of lithium projects in the USA and Canada.

The projects have been systematically selected in highly prospective but underexplored areas with favourable geological characteristics.

Project selection prioritises high-grade mineralisation potential in mining friendly jurisdictions to maximise the probability of future economic development.



Sustained Demand

The demand driven fundamentals for lithium remain persistent, with demand for clean energy accelerating lithium demand and supply struggling to keep pace.

Target markets in the US and Canada where the vast majority of lithium is currently imported.

Strong encouragement and incentives for the EV supply chain from the US government for production in the US and Canada.



Responsible Exploration

The team has been assembling the project portfolio for over 3-years, demonstrating a systematic approach to project selection to maximise the possibility of long-term success.

Early engagement with local communities is recognised as a vital activity and efforts across all projects to incorporate and alleviate community concerns are underway.



Experienced Team

An experienced team, with proven experience in identifying, defining and developing resources projects, including hard rock lithium mines, concentrators and refineries.

Board and management team has over 130 years combined resources experience.

Patriot Values



BE THOROUGH

We take a systematic approach to identifying, exploring and developing our projects.



WORK AS A TEAM

We are a team of experts who collaborate, listen and respect diverse perspectives and input.



STAY AGILE

We embrace and encourage agile mindsets to seek and implement innovative solutions.



EMBRACE COURAGE

We make courageous decisions, embrace challenges and take decisive actions.



REMAIN ACCOUNTABLE

We prioritise accountability in our behaviour and deliver outcomes with integrity.

Experienced Team

Mr Phil Thick Chairman

Mr Thick is a Mining Executive with more than 30 years' experience as a senior executive and director in oil and gas, mining and chemical processing. During the past 5 years, Mr Thick headed up Tianqi Lithium Australia, a subsidiary of Tianqi Lithium Corp, one of the world's largest lithium companies and majority owner of the Greenbushes lithium mine. Mr Thick was charged with building the world's largest lithium hydroxide plant in Kwinana, south of Perth, an investment of nearly A\$1B.

Mr Nicholas Vickery CEO and Managing Director

Mr Nicholas (Nick) Vickery is a mining executive with 20 years' experience working in the resources industry, specialising in the development of major resource projects. Most recently Nick worked for 5 years in the leadership team at Covalent Lithium, the JV company developing and operating the \$2 billion Mount Holland Lithium Project on behalf of Wesfarmers and SQM. The Mount Holland Project included the development of a mine and concentrator for the globally significant, high-grade Earl Grey hard rock lithium deposit in Western Australia and a refinery to produce over 50,000 tonnes of battery grade lithium hydroxide per annum.

Mr Matt Gauci Executive Director

Mr Gauci is a Mining Executive with more than 20 years' experience having successfully financed and managed private and public mining exploration companies operating in Australia, Africa and South America. Mr Gauci has managed teams in the exploration, development and feasibility of a number of mining exploration projects. In the Lithium sector he was most recently generated and explored one of the Pilbara's largest lithium exploration portfolio's which was eventually sold to SQM.

Dr Oliver Kreuzer Technical Director

Dr Kreuzer is a Geoscientist with more than 20 years' experience as a company director and a world recognised project generator and explorer, having been involved in the generation and exploration of significant energy, battery metals, precious and base metals exploration projects across the globe. In the lithium sector he has most recently been involved in generating, evaluating and exploring lithium projects in the western and mid-western U.S., including the Black Hills in South Dakota and Pegmatite Belt in Arizona.

Mr Matt Worner Director

Mr Worner is a Lawyer with more than 20 years' experience in the mining and energy sector having worked with a number of ASX companies as a Company Secretary and Director. Mr Worner has a strong understanding of the ASX Listing Rules, the Corporations Act, IPO's, and Capital Raisings. Mr Worner has overseen the completion of multiple asset acquisitions and divestments across the globe, including the U.S., and maintains strong connections with regulatory bodies, governments and capital markets.

Experienced Team

Mr David Johnson
Chief Operating Officer

Mr Johnson is a U.S.-based geoscientist with more than 30 years' experience across a wide range of deposit types with companies including IGO, LionOre, Rio Tinto and WMC. Mr Johnson is a proven leader and mineral resource discoverer with significant experience in analysis and interpretation of geoscientific datasets to identify new exploration opportunities.

Mr Cameron O'Brien
Chief Financial Officer

Cameron specialises in corporate advisory, company secretarial and financial management services. Cameron is a qualified chartered accountant and, prior to joining Grange, spent four years in external audit at one of the leading international Audit, Tax & Advisory firms focused on engagements across the natural resources and industrial sectors. Following this Cameron spent two years in the firm's Corporate Finance division where he was focused on due diligence, expert reports, valuations and ASX listings.

Dr Joey Evensen
Consultant Geologist

Dr. Evensen is a geologist and geochemist who has extensive experience with LCT pegmatites and related granite ore systems in North America and elsewhere. His expertise combines high resolution field studies with quantitative constraints from experimental petrology and other geochemical datasets, which together heavily assist the success of mineral exploration programs. He pioneered much of the beryllium systematics and geochemical cycles known for pegmatites today.

Mr Ralphe Porter
Consultant Geologist

Mr Porter has significant experience in the identification and definition of pegmatite hosted lithium in particular in the Greenbushes and Pilgangoora districts, WA, two of the largest hard rock lithium producing districts, globally.

Mr Phil Smerchanski
Consultant Geologist

Mr Smerchanski has worked as a geologist for the Oxygen Capital group of companies, Anglo American, Inco, and Falconbridge and as an independent consultant. He is considered an expert in regional and near-mine exploration for metallic ore deposits.

Corporate Snapshot

CAPITAL STRUCTURE

Shares on Issue ¹	86,825,002
Market Capitalisation @ \$0.27	\$23,442,751
Options on Issue at Listing	5,800,000
Performance Rights on Issue	4,750,000

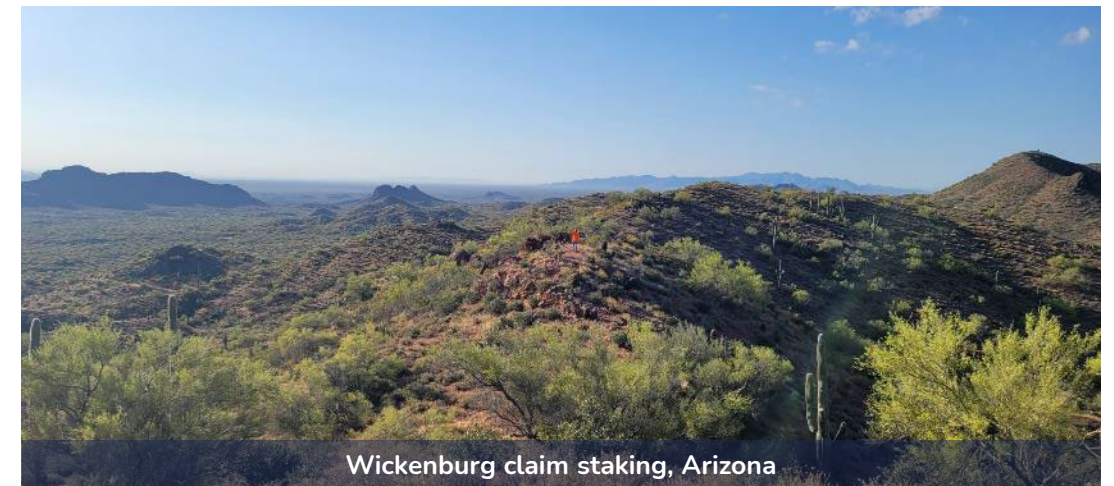
TOP SHAREHOLDERS²

Jason Peterson ²	8.1%
Oliver Kreuzer	6.2%
Matthew George Gauci	6.1%

1. Founders of the Company escrowed for 24 months from listing
2. Consolidated holdings of Jason Peterson held by under multiple entities



Historic Dove pegmatite mine, Wickenburg.



Wickenburg claim staking, Arizona

Project Portfolio

USA Projects

Wickenburg - located 90km North-West of Phoenix, Arizona.

Keystone - surrounds the historic lithium Etta Mine in the Black Hills which was known for the lithium-caesium-tantalum (LCT) pegmatites containing 'surfboard-sized' spodumene crystals*.

Tinton West - adjacent to the Giant Volney LCT pegmatite, a high-grade historic tantalum and lithium producer.

Canadian Projects

Gorman - 320 km² along strike from Frontier Lithium's PAK project (26Mt @ 1.6% Li₂O Measured & Indicated + 32.5Mt @ 1.4% Li₂O Inferred)**.

Forester - 145 km² with numerous mapped pegmatites and SE of a previously identified pegmatite swarm near the Musselwhite gold mine

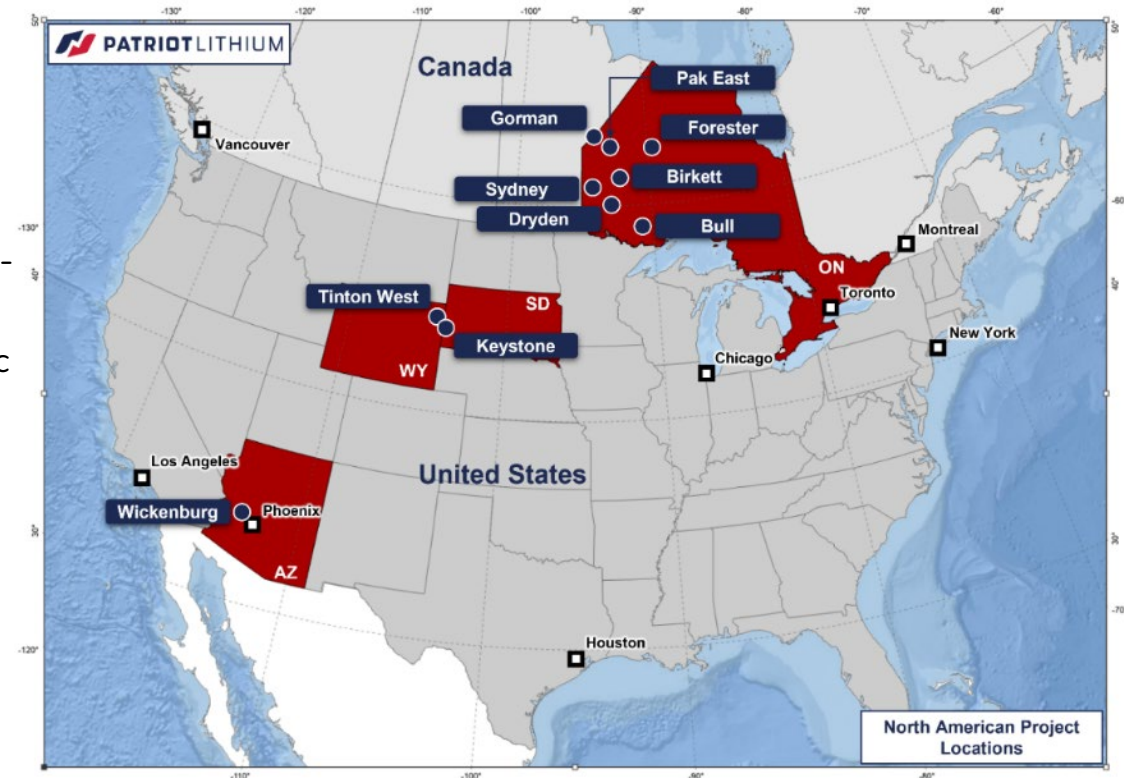
Birkett - 25 km² immediately west of a series of pegmatite swarms, known as the Allison Lake and Jubilee Lake pegmatite fields.

Pak East - 34 km² including mapped pegmatites and located 32km E of Frontier Lithium's PAK project.

Dryden -161 km² adjacent to Critical Resources' Mavis Lake lithium project and includes several mapped pegmatites.

Bull - 142 km² including mapped pegmatites 30 km along strike to the W from the Niobe-Nym Lakes LCT pegmatites.

Sydney - 342 km² containing mapped pegmatites, located 44km NE of the operating, globally significant Tanco LCT mine.



* Page et al. 1953 (USGS km² Paper 247)

** Frontier Lithium Corporate Presentation February 2023 (<https://www.frontierlithium.com/investors-1>).



Recent Highlights

New and Expanded Projects

Claim staking in Ontario has secured 1,169 km² of exploration ground across seven highly prospective lithium land packages.

Staking in Wickenburg, Arizona has added 148 new lode mining claims (~12km²) to the existing ~28km² already held.

New staking at Gorman project, which is along strike from Frontier Lithium PAK project.

New staking at Black Hills ongoing.

Further project generation work continuing.

Comprehensive Reconnaissance

Ongoing mapping across the Wickenburg Project has almost tripled the strike length of the Dove West and Dove East pegmatites to 440m+.

Exploration team has identified additional prospective pegmatite outcrops near Dove.

Equity Exploration has completed 6-week reconnaissance program across Patriot's seven Ontario Projects.

Initial Black Hills reconnaissance ongoing.

Wickenburg Exploration Progress

Selective spodumene samples from the Dove West pegmatite returned grades up to 5.88% Li₂O¹.

Soil sampling has identified zones of significant lithium, caesium and tantalum anomalism.

Mapping has further expanded the prospective LCT pegmatite swarm, expanding priority exploration area to ~2km by 2km.

Hyperspectral and gravity survey results are expected imminently.

First Drilling to Commence Imminently

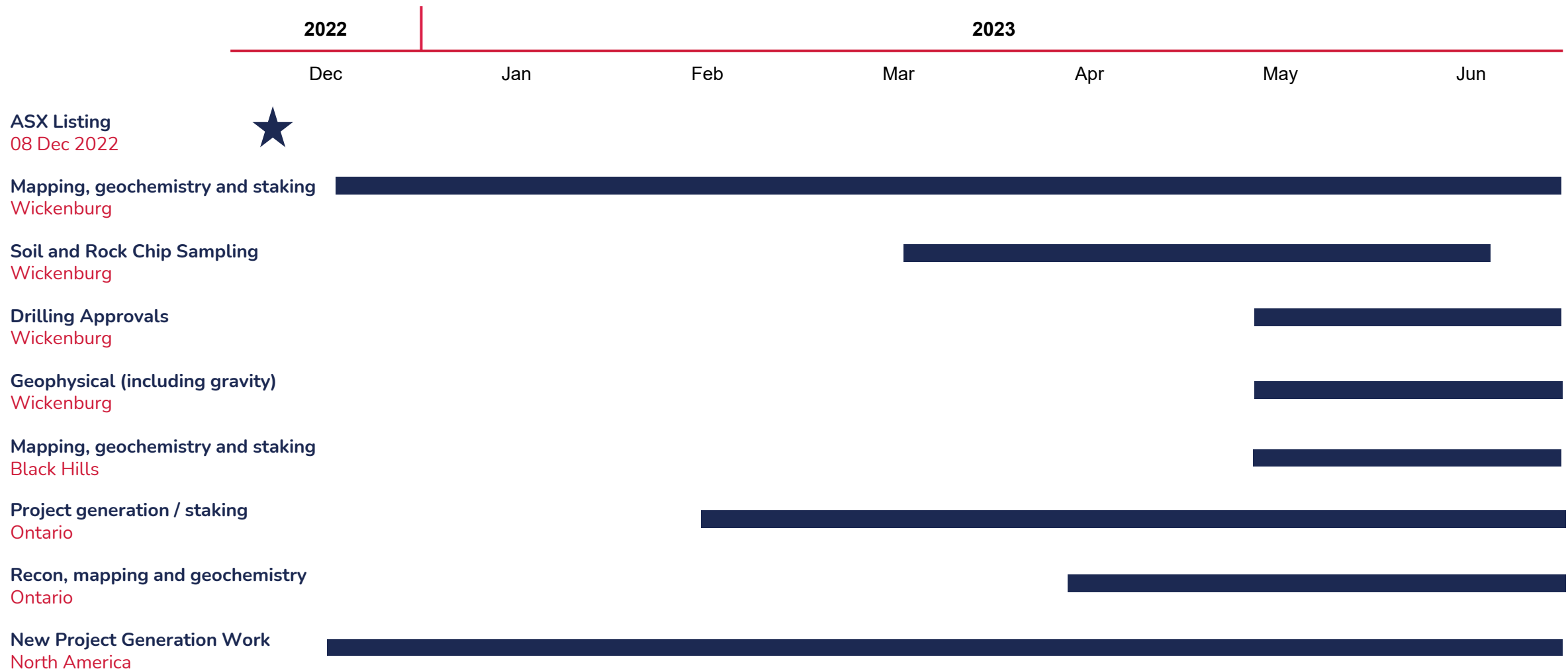
Approval received from the Bureau of Land Management for Patriot's maiden Phase 1 drilling program at its Wickenburg project.

Patriot plans to drill up to 14 diamond core holes for a total downhole length of up to 1,015m to test the outcropping Dove West spodumene pegmatite at the historic Dove pegmatite mine.

Patriot has engaged drilling contractor and expects to commence drilling shortly.

¹ The Company cautions that these samples were selectively taken from outcropping spodumene crystals strictly to confirm lithium contents within weathered samples. The samples are not considered representative of the exposed or any other portion of the Dove West pegmatite nor its overall grade.

Activities to Date



Wickenburg Project, Arizona

Large 100% owned property:

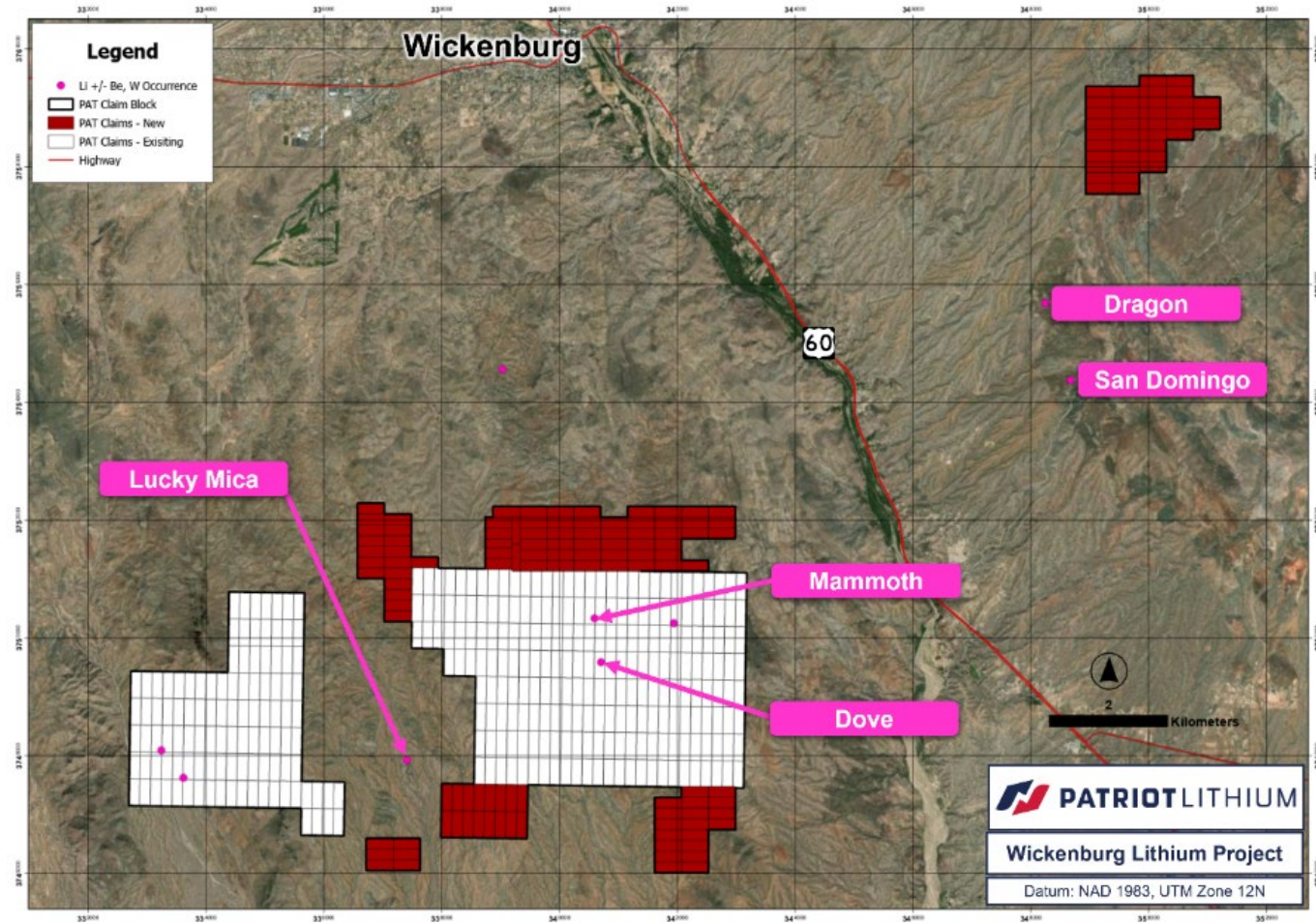
- Staking of 148 new unpatented lode mining claims or $\sim 12\text{km}^2$ ($\sim 3,043$ acres), adding to the existing 347 unpatented lode mining claims ($\sim 28\text{km}^2$ or $\sim 6,940$ acres)

Low-risk mining jurisdiction:

- Arizona consistently ranks high in the Fraser Institute Investment Attractiveness Index (2020: 2nd, 2021: 5th).

Simple exploration proposition

- Located within an USGS critical mineral focus area.
- Geology is well exposed and amenable to low cost and efficient surface sampling and remote sensing techniques.



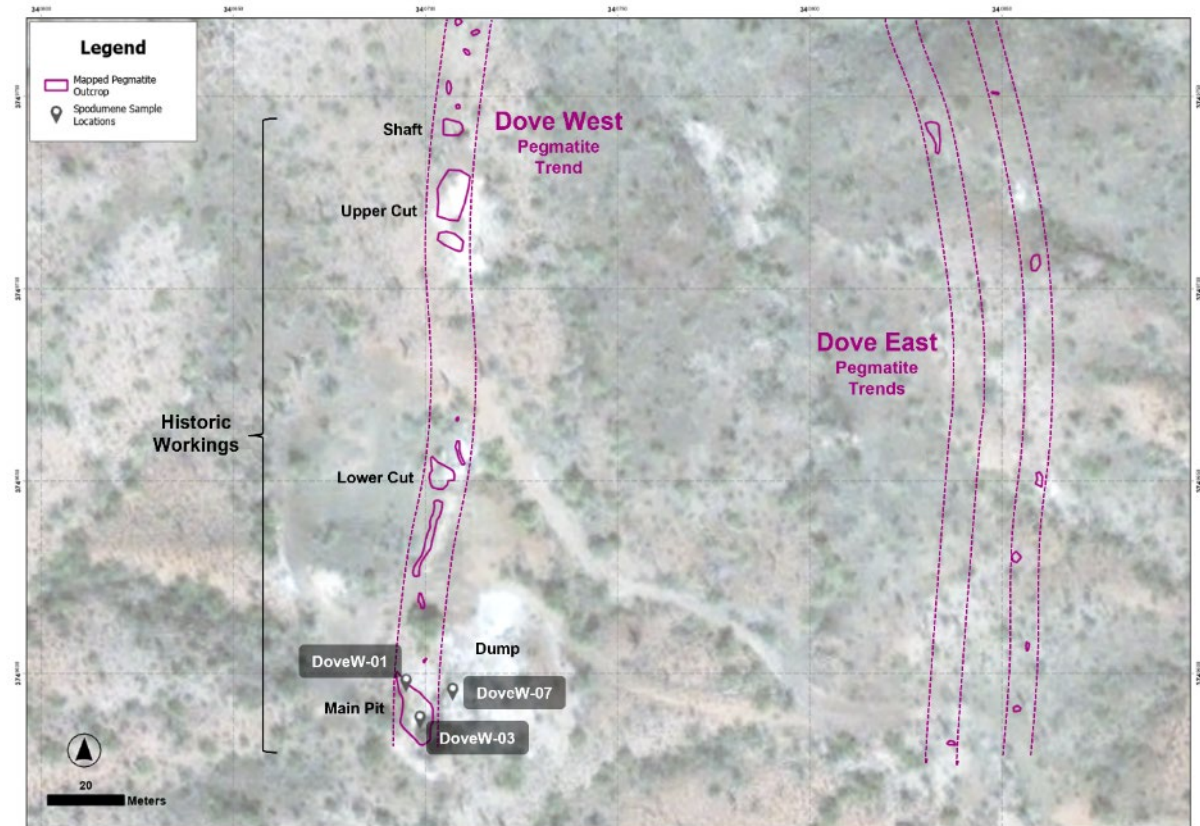
Wickenburg Project, Arizona

Encouraging early exploration

- Mapping has further expanded the prospective LCT pegmatite swarm at Wickenburg, expanding the exploration area to ~2x2km.
- Dove West spodumene has been selectively sampled at up to 5.88% Li_2O
- Rock chip samples from Dove West, Dove East and Mammoth have returned numerous anomalous results up to 1.35%
- Soil sampling has identified zones of significant LCT anomalism over the Dove, Mammoth and Vulture pegmatites and new target areas.

Next steps for Wickenburg

- Phase 1 exploration drilling to commence.
- Hyperspectral and gravity survey results to be returned.
- Further expanded and infill soil sampling and rock chip program.
- Planning of Phase 2 drilling program.



Sample ID	Easting	Northing	Sample Description	Li (%)	Li ₂ O (%)
DoveW-01	340695.06	3749595.21	Moderately weathered spodumene crystals; northern pit	2.60	5.59
DoveW-03	340698.73	3749585.68	Strongly weathered (rotten) spodumene crystals; southern pit	1.73	3.72
DoveW-07	340707.21	3749592.92	Relatively fresh spodumene crystals; main dump	2.73	5.88

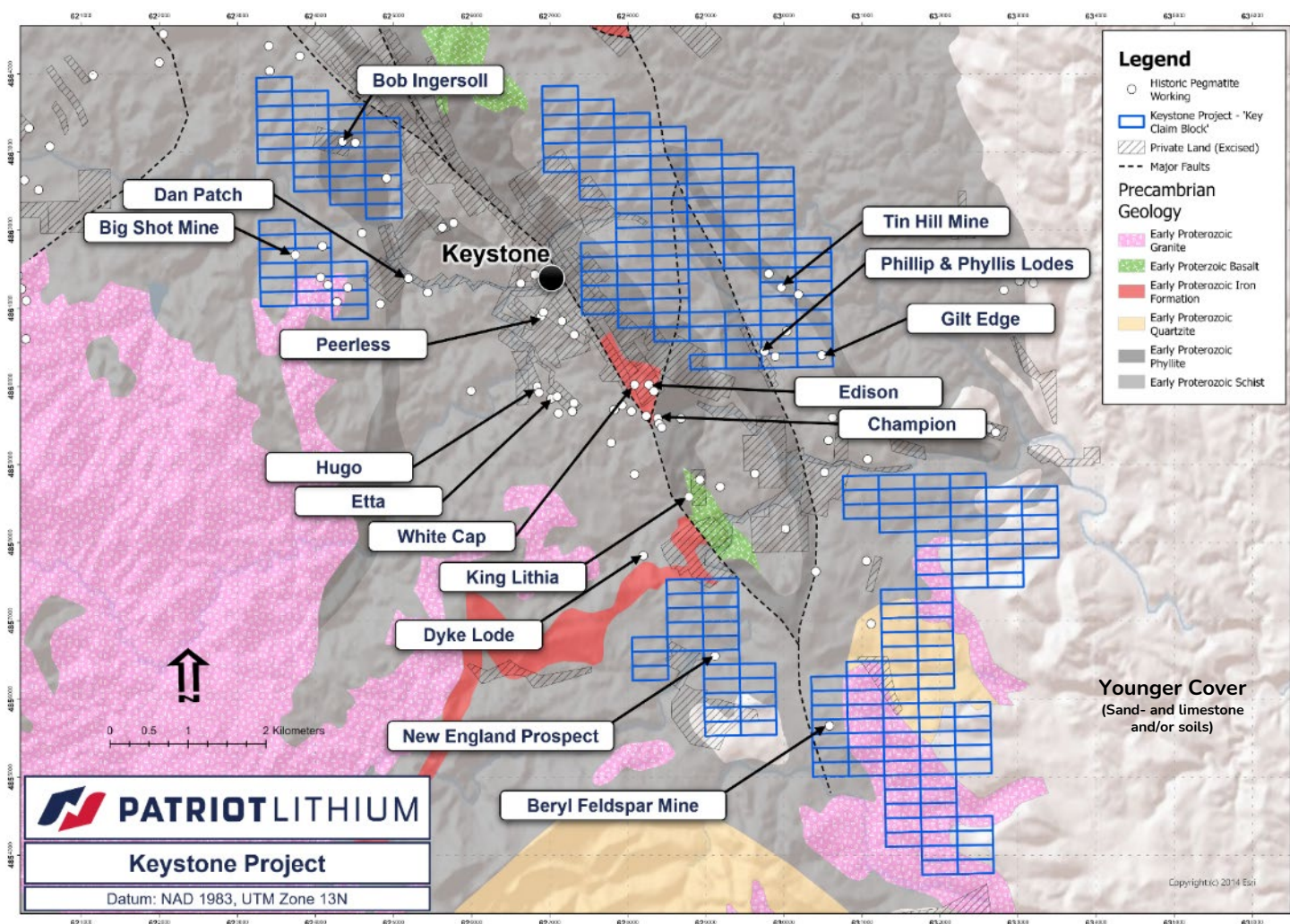
Keystone Project, South Dakota

255 unpatented lode mining claims surround and are along strike from the main historic lithium mines

- The Keystone district hosts the largest historic Black Hills lithium producers such as the Etta, Hugo, Peerless, Edison and Bob Ingersoll mines.
- Etta operated from 1898 to 1960, recording a head grade of ~6.0% Li_2O and yielded up to >14m-long spodumene crystals, the largest ever mined*

Walk-up targets

- Project area contains several historic mines, centred upon outcropping LCT pegmatites
- Reconnaissance site visit confirmed numerous additional pegmatites not recorded in any existing maps



*Page et al. 1953 (USGS Professional Paper 247)

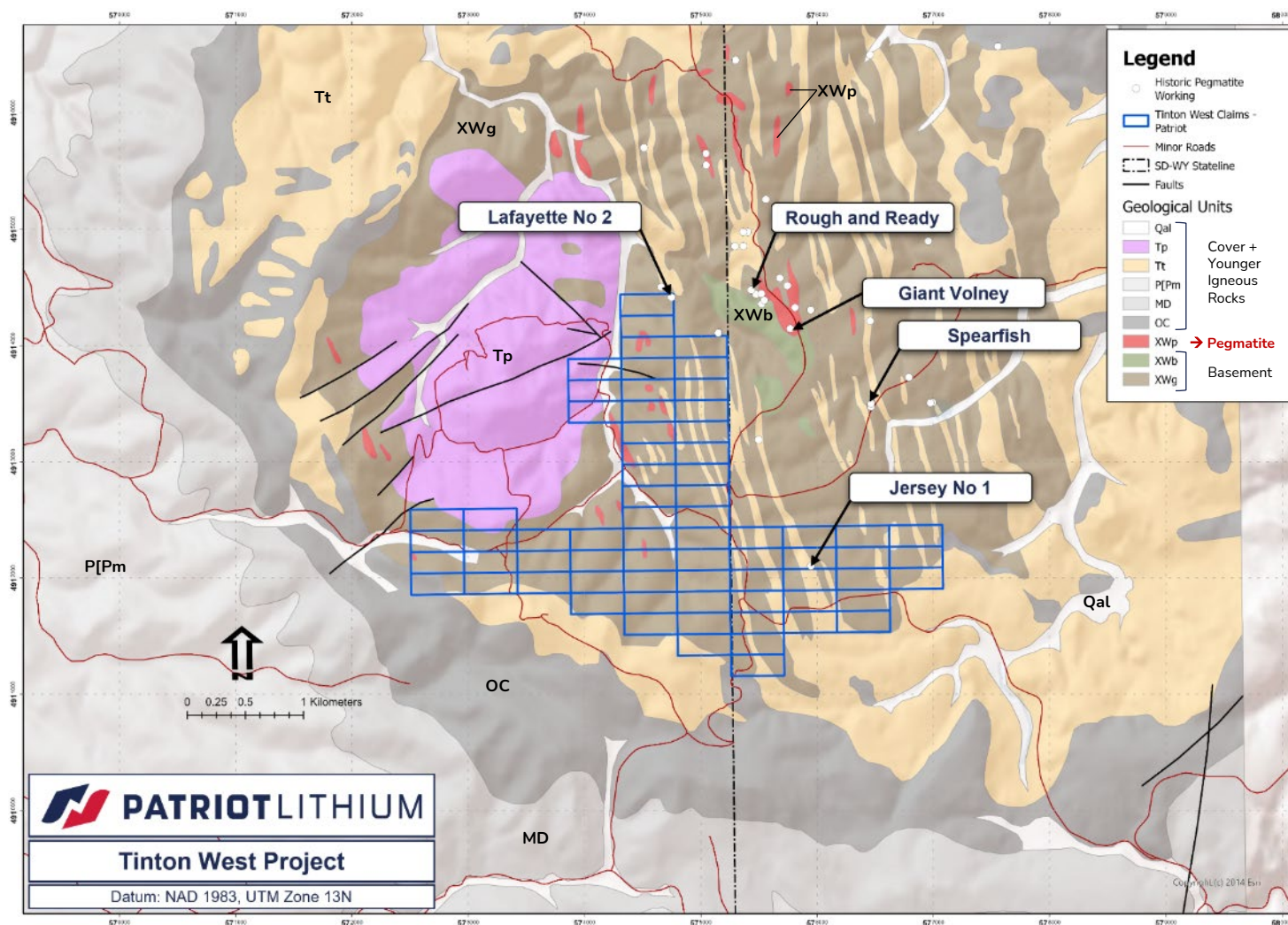
Tinton West Project, South Dakota

69 unpatented lode mining claims at the Tinton West Project

- Project adjacent to and along strike from the Giant Volney LCT pegmatite*
- Patriot claims contain several known pegmatites
- No systematic modern exploration

1930/40s hard rock lithium mining at Giant Volney tin-tantalum-lithium mine**:

- 400t of amblygonite concentrate at 8.3% Li_2O
- 1,080t of spodumene concentrate at between 5.7 and 6.3% Li_2O
- Average lithium ore grade was ~2.8% Li_2O



*Includes the historic 'Giant Volney' and 'Rough and Ready' pegmatite workings; **Page et al. 1953 (USGS Professional Paper 247)

Black Hills Exploration Activities

Early reconnaissance undertaken

- Rock chip samples collected from 55 pegmatites visited in the Keystone region.
- In northeastern portion of the Keystone Project exploration has revealed a trend of fertile LCT pegmatites using geological fieldwork and the application of portable X-ray fluorescence.
- A number of pegmatite outcrops with muscovite and potassium feldspar mineral chemistry (K/Rb ratio and other trace elements) estimated by portable x-ray fluorescence (pXRF) consistent with an evolved, potentially Li-fertile magma composition.*
- The lithium-prospective trend spans approximately 1km in length.

Next Steps

- Further priority rock chip samples to be collected and sent for assay.
- Further soil sampling and rock chip work being planned, particularly around anomalous outcrops.
- Further pegmatite mapping and sampling over remainder of Keystone and Tinton West areas.

* Bradley DC & McCauley LL (2016) A preliminary deposit model for lithium-cesium-tantalum (LCT) pegmatites. US Geological Survey Open File Report 1008.



Ontario Projects, Canada

Seven (7) projects in emerging lithium districts in north-western Ontario, Canada (Figure 1) (see ASX announcement dated 20 March 2023).

Gorman Project (~320 km²) - along strike from Frontier Lithium's (TSXV: FL) tier-one PAK lithium project.

Forester Project covers (~145 km²) - SE of the Musselwhite gold mine and includes numerous mapped pegmatites.

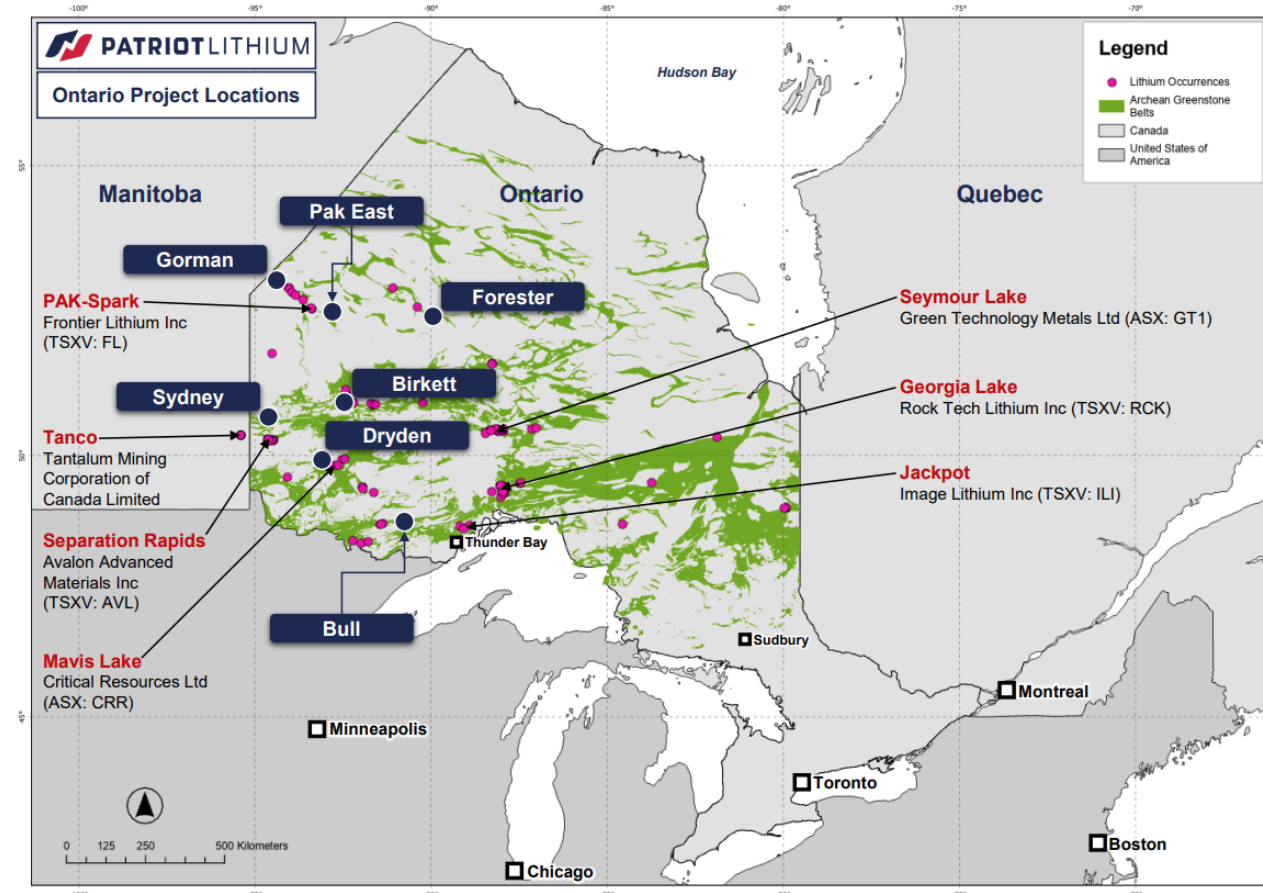
Birkett Project (~25 km²) - immediately west of Allison Lake and Jubilee Lake pegmatite fields.

The Pak East Project (~34 km²) captures mapped pegmatites and is ~32km E of Frontier Lithium's PAK lithium project.

Dryden Project (~161 km²) - adjacent to Critical Resources' (ASX: CRR) Mavis Lake lithium project and includes several mapped pegmatites.

Bull Project (~142 km²) - includes numerous mapped pegmatites along strike from the Niobe-Nym Lakes LCT pegmatites.

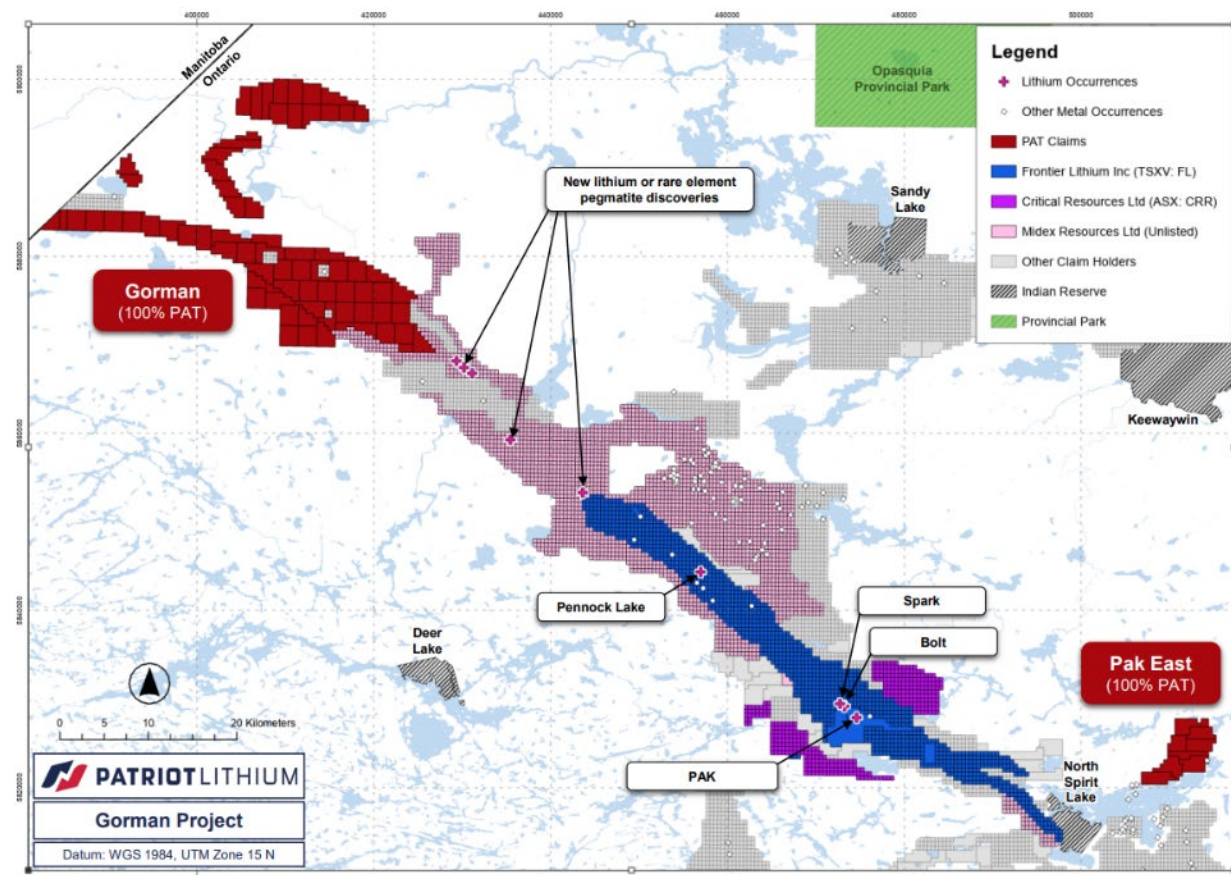
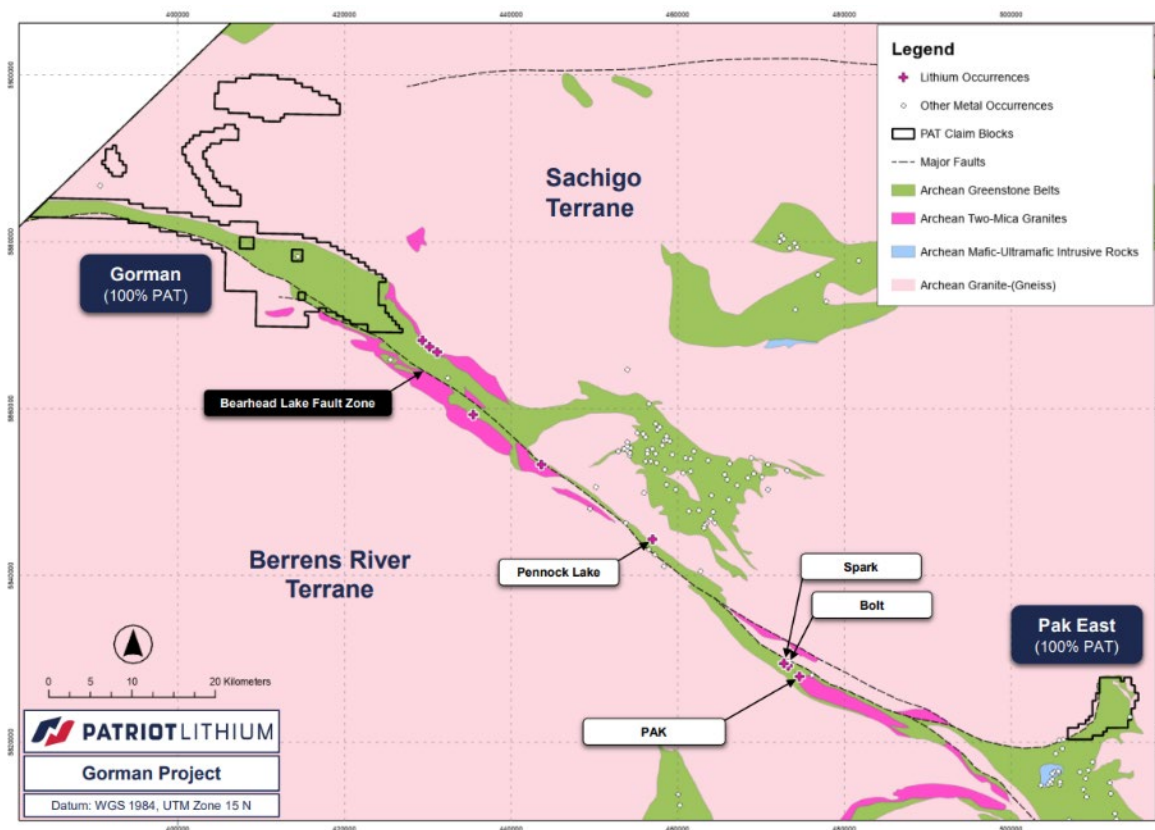
Sydney Project (~342 km²) - contains mapped pegmatites and is ~44km NE of the operating, globally significant Tanco LCT mine



Reconnaissance program completed with initial results expected imminently.

Gorman Project

- Located along strike from Frontier Lithium's (TSXV: FL) tier-one PAK lithium project (41.9Mt @ 1.54% Li_2O)¹, one of North America's largest and highest grade spodumene resources.
- Covers 72 multi-cell mining claims for a total area of ~320km².



- Equity Exploration and Accretive Metals Advisory have completed their initial reconnaissance program on behalf of Patriot over Ontario properties, with no safety incidents recorded.
- Awaiting report from Equity Exploration for details on mapping and sampling.

What's Next

Ready for the next stages of exploration

- ➔ The **maiden drilling program on the Wickenburg Project** has received approval from the BLM to proceed with initial drilling, with results of hyperspectral and gravity survey expected imminently and further exploration work being planned.
- ➔ Awaiting **Phase 2 reconnaissance report for Ontario**, including mapping of identified pegmatite trends and return of surface rock and soil sampling.
- ➔ **Completing initial reconnaissance and mapping at the Black Hills** and planning initial soil sampling program over pegmatite trends.
- ➔ The Company continues to review and pursue a **variety of prospective lithium opportunities** in North America



Surface outcropping pegmatite on Wickenburg tenements



Nicholas Vickery
Managing Director
Nicholas@patriot-lithium.com