



BLAZE
Minerals Limited

ABN 15 074 728 019

ASX:BLZ

JULY 2023



North Spirit Lithium Project
Electric Avenue, Ontario

Disclaimer



Disclaimer

This presentation has been prepared by Blaze Minerals Limited ("Company"). It does not purport to contain all the information that a prospective investor may require in connection with any potential investment in the Company. You should not treat the contents of this presentation, or any information provided in connection with it, as financial advice, financial product advice or advice relating to legal, taxation or investment matters.

No representation or warranty (whether express or implied) is made by the Company or any of its officers, advisers, agents or employees as to the accuracy, completeness or reasonableness of the information, statements, opinions or matters (express or implied) arising out of, contained in or derived from this presentation or provided in connection with it, or any omission from this presentation, nor as to the attainability of any estimates, forecasts or projections set out in this presentation.

This presentation is provided expressly on the basis that you will carry out your own independent inquiries into the matters contained in the presentation and make your own independent decisions about the affairs, financial position or prospects of the Company. The Company reserves the right to update, amend or supplement the information at any time in its absolute discretion (without incurring any obligation to do so). Neither the Company, nor its related bodies corporate, officers, their advisers, agents and employees accept any responsibility or liability to you or to any other person or entity arising out of this presentation including pursuant to the general law (whether for negligence, under statute or otherwise), or under the Australian Securities and Investments Commission Act 2001, Corporations Act 2001, Competition and Consumer Act 2010 or any corresponding provision of any Australian state or territory legislation (or the law of any similar legislation in any other jurisdiction), or similar provision under any applicable law. Any such responsibility or liability is, to the maximum extent permitted by law, expressly disclaimed and excluded.

Nothing in this material should be construed as either an offer to sell or a solicitation of an offer to buy or sell securities. It does not include all available information and should not be used in isolation as a basis to invest in the Company.

Future matters

This presentation contains reference to certain intentions, expectations, future plans, strategy and prospects of the Company. Those intentions, expectations, future plans, strategy and prospects may or may not be achieved. They are based on certain assumptions, which may not be met or on which views may differ and may be affected by known and unknown risks. The performance and operations of the Company may be influenced by a number of factors, many of which are outside the control of the Company. No representation or warranty, express or implied, is made by the Company, or any of its directors, officers, employees, advisers or agents that any intentions, expectations or plans will be achieved either totally or partially or that any particular rate of return will be achieved.

Given the risks and uncertainties that may cause the Company's actual future results, performance or achievements to be materially different from those expected, planned or intended, recipients should not place undue reliance on these intentions, expectations, future plans, strategy and prospects. The Company does not warrant or represent that the actual results, performance or achievements will be as expected, planned or intended.

Competent Person's Statement

The information in this announcement that relates to Exploration Results is based on and fairly represents information and supporting documentation prepared by Mr Simon Coxhell. Mr Coxhell is a technical director for Blaze and a member of the Australian Institute of Mining and Metallurgy. Mr Coxhell has sufficient experience relevant to the styles of mineralisation and types of deposits which are covered in this announcement and to the activity which they are undertaking to qualify as a Competent Person as defined in the 2012 edition of the 'Australasian Code for Reporting of Exploration Results, Mineral Resources and Ore Reserves' ("JORC Code"). Mr Coxhell consents to the inclusion in this announcement of the matters based on his information in the form and context in which it appears.

CORPORATE OVERVIEW



Current Issued Capital (1)	628,558,246
Options ("BLZOB") Quoted options exercisable at \$0.05 on or before 31 May 2024	362,500,000
Market Cap (At \$0.02)	\$12,571,165
Cash	\$2,300,000
Enterprise Value (At \$0.02)	~\$10,200,000

Notes:

1.Excluding any future anniversary milestones as part of transaction with vendors.

MAJOR SHAREHOLDERS

1 SUNSET CAPITAL MANAGEMENT PTY LTD	9.6%
2 EXIRO MINERALS CORPORATION	8.8%
3 GREAT SOUTHERN FLOUR MILLS PTY LTD	5.4%
4 RIMOYNE PTY LTD	3.9%
5 MR GAVIN JEREMY DUNHILL	3.5%

BOARD AND MANAGEMENT



David Prentice
Non-Exec Chairman

David is a senior resources executive with 30 years domestic and international corporate finance and executive management experience. David is also currently Managing Director of Brookside Energy Limited and Chairman of Noronex Limited, and Black Mesa Energy, LLC.



Simon Coxhell
Managing Director

Simon is an experienced geologist with over 35 years of experience exploring and developing a range of projects. He was previously MD of Echo Resources which under his leadership grew from an \$8M market capitalisation to \$244M, under a takeover by Northern Star Resources.



Mathew Walker
Corporate Director

Mr. Walker is a businessman and founder of numerous public and private enterprises. Specialising in the natural resources sector, Mr. Walker has served as Chairman or Managing Director of public enterprises with operations in Australia, Africa, Europe, Central Asia, North America and South America.



Steve Samuel
Company Secretary

Mr Samuel is a Chartered Accountant who commenced his career at a large international accounting firm and has since been involved with a number of mineral exploration companies operating in the resources sector, based in Australia.

TRANSACTION DETAILS



Corporate Advisor



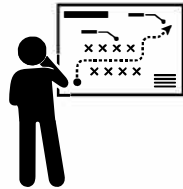
- **Initial Consideration Paid**
 - (i) CAD\$50,000 in cash upon execution
 - (ii) within 5 business days of the completion of DD
 - (A) CAD\$50,000 in cash & (B) 55,000,000 FPO shares @ \$0.01
- **First Anniversary Consideration:**
 - (i) CAD\$200,000 in cash
 - (ii) CAD\$500,000 FPO BLZ @ 20 Day VWAP
- **Second Anniversary Consideration:**
 - (i) CAD\$200,000 in cash
 - (ii) CAD\$750,000 FPO BLZ @ 20 Day VWAP
- **Third Anniversary Consideration:**
 - (i) CAD\$250,000 in cash
 - (ii) CAD\$1,000,000 FPO BLZ @ 20 Day VWAP
- **Fourth Anniversary Consideration:**
 - (i) CAD\$500,000 in cash
 - (ii) CAD\$2,250,000 FPO BLZ @ 20 Day VWAP
- **Scoping Study Milestone:**
 - (i) CAD\$500,000 in cash
 - (ii) CAD\$500,000 FPO BLZ @ 20 Day VWAP
- **Feasibility Study Milestone Consideration:**
 - (i) CAD\$1,000,000 in cash
 - (ii) CAD\$1,000,000 FPO BLZ @ 20 Day VWAP
- **Net Smelter Royalty of 2%**

VENDORS & IN COUNTRY GEOLOGY TEAM



PHILOSOPHY

- The next generation of high-grade long-lived Tier 1 mineral discoveries requires early-stage greenfields exploration; and
- Historical exploration data contains valuable geoscientific information that is generally neglected and overlooked.



STRATEGY

- Identify high-quality mineral exploration opportunities;
- Retain passive minority **exposure to discovery** upside on a growing
- Structure alliances with funding partners; and portfolio of projects.

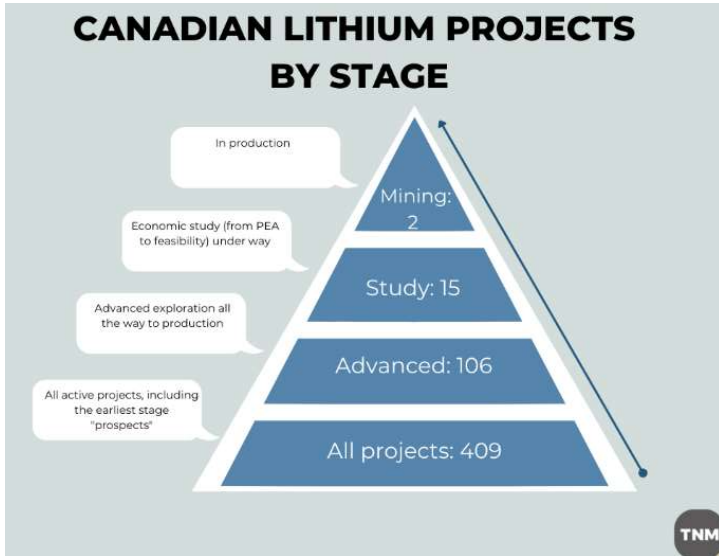


FOCUS

- Build the **largest proprietary collection** of exploration data;
- **Develop software** and processes to unlock the value of this data; and
- Identify Tier 1 and Tier 2 discovery opportunities.



LEADING THE NORTH AMERICAN EV TRANSITION



April 21 - Canada and Volkswagen (VOWG_p.DE), on Friday together committed more than C\$20 billion (\$14.8 billion) for a battery gigafactory in St. Thomas, Ontario, the biggest single investment ever in the country's electric-vehicle supply chain. (Reuters)

"The government is committed to making Canada the global supplier of choice for sustainably and responsibly sourced critical minerals, from exploration and extraction, to manufacturing and recycling, while also fostering mutually beneficial relationships between industry and Indigenous peoples," said Wilkinson in a news release Monday.

"Through the recently released critical minerals strategy, we are supporting responsible and sustainable critical mineral development, to create good jobs, lower emissions, and build the low-carbon economy."

Jonathan Wilkinson. Minister of Natural Resources
 Source: <https://globalnews.ca/news/9412972/justin-trudeau-saskatoon-plant-visit/>



NORTH SPIRIT PROJECT

- **Property**

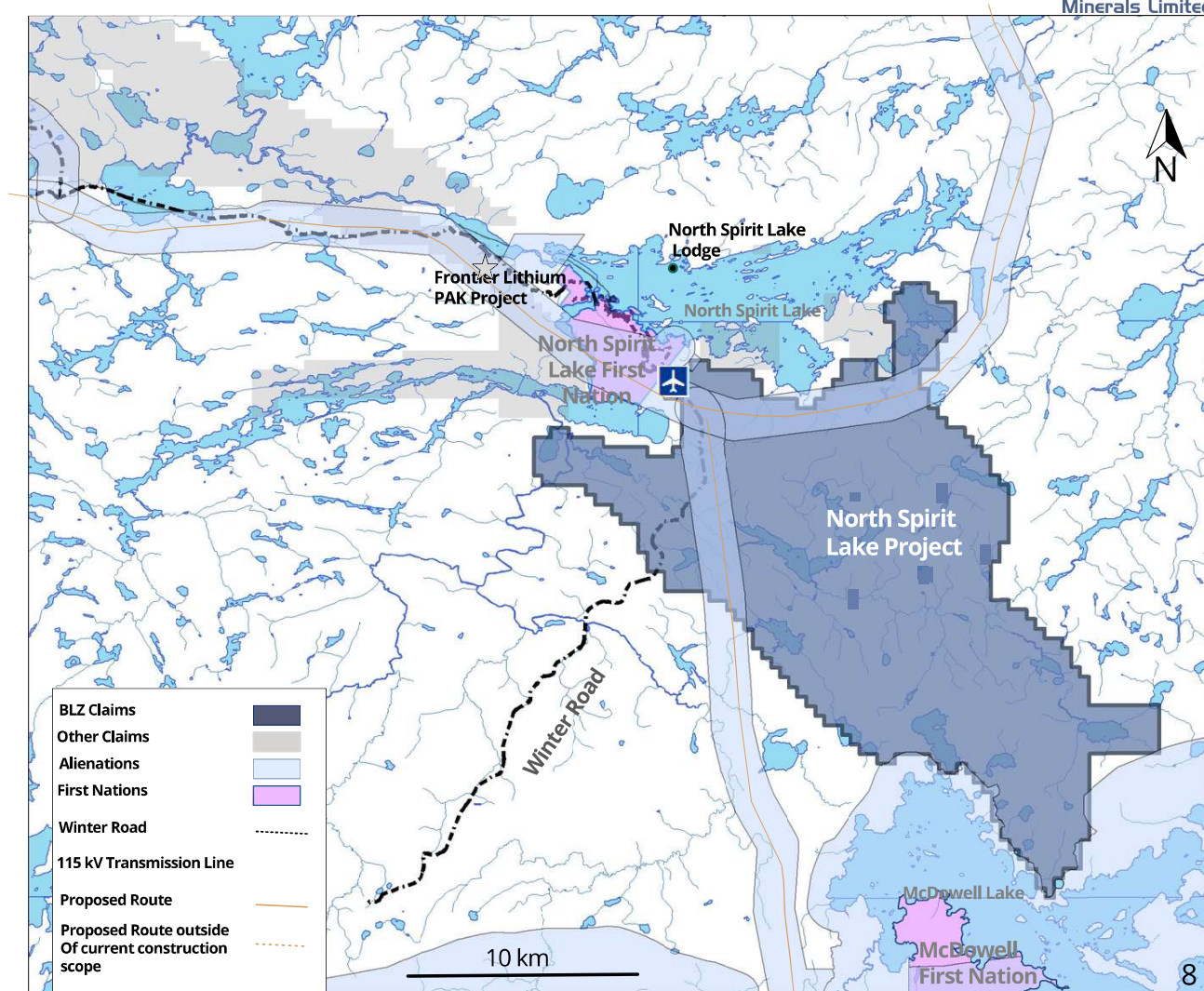
- 100% owned
- 1,827 cell claims
- 36,510 Ha

- **Access and Infrastructure**

- Wataynikaneyap Power Project
 - 115kV Transmission Line
- Commercial Airport (Bear Skin Airlines)
- Winter Road Access
- North Spirit Lake lodge

- **Indigenous Traditional Territories**

- Keewaytinook Okimakanak Council
 - North Spirit Lake First Nation
 - McDowell First Nation
 - Deer Lake First Nation

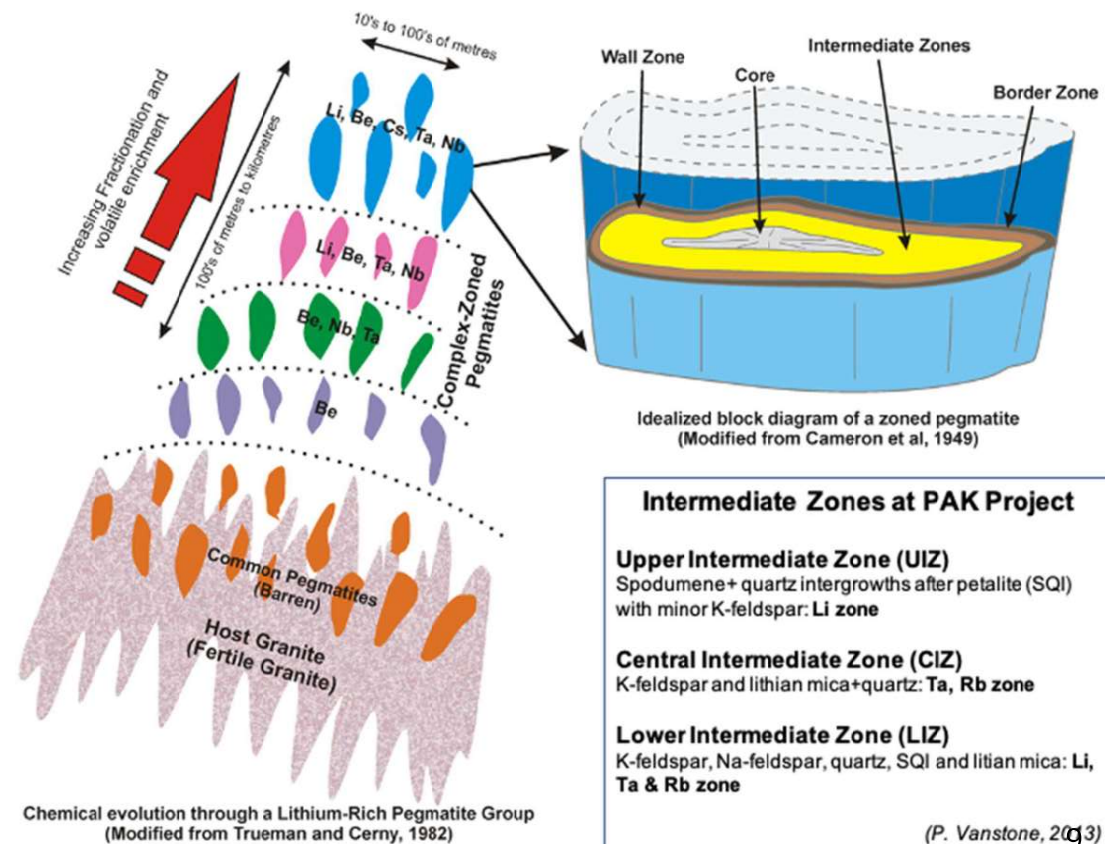


FERTILE GRANITE

Fertile granites and their pegmatite products tend to occur in the roots of orogeny belts formed by the collision of plate margins where erosion has revealed rocks formed at a depth of about 6 km. The fertile granites are apt to occur within linear belts of metasedimentary and metavolcanic rocks along faults, boundaries between major rock units, and other structural zones of weakness.

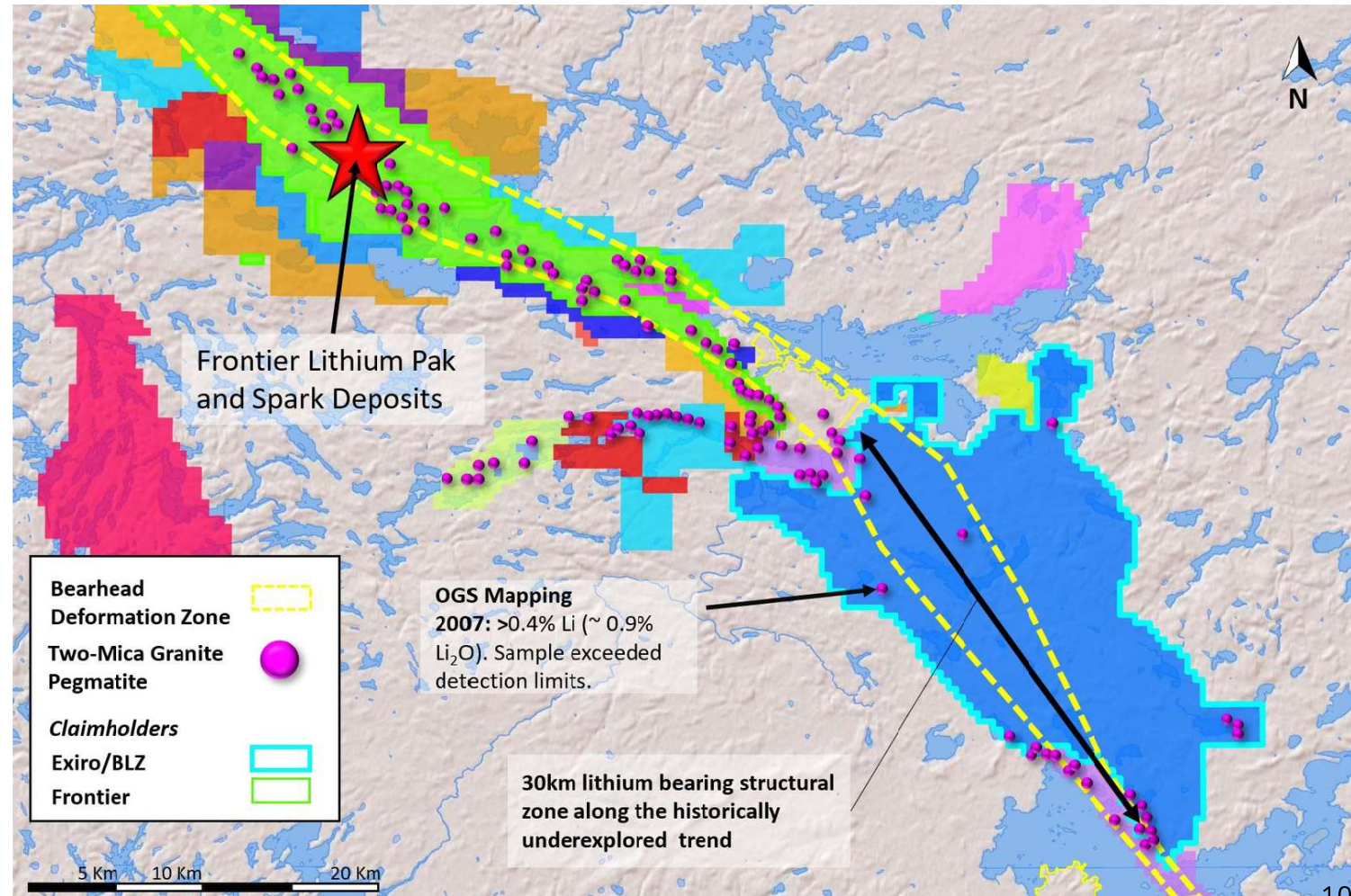
At North Spirit Lake

- S-Type plutonic rocks of the peraluminous suite are restricted to a stocks and dikes in greenstone belts and a series of elongate units at margins of the North Spirit Lake greenstone belt.
- The peraluminous rocks are coarse to pegmatitic, white and variably massive to foliated and mylonitic and one or both of biotite and muscovite may be present.
- Accessory minerals include garnet, tourmaline, cordierite and sillimanite.
- Pegmatite dikes of two-mica granite in the can be mineralized with tourmaline, beryl, spodumene and holmquistite.



ELECTRIC AVENUE, ONTARIO

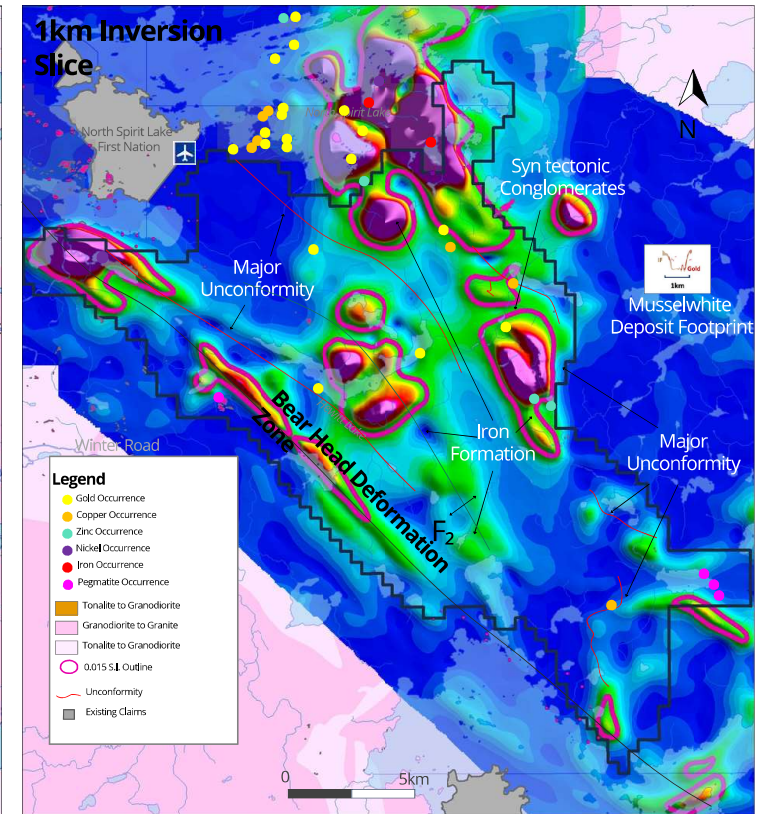
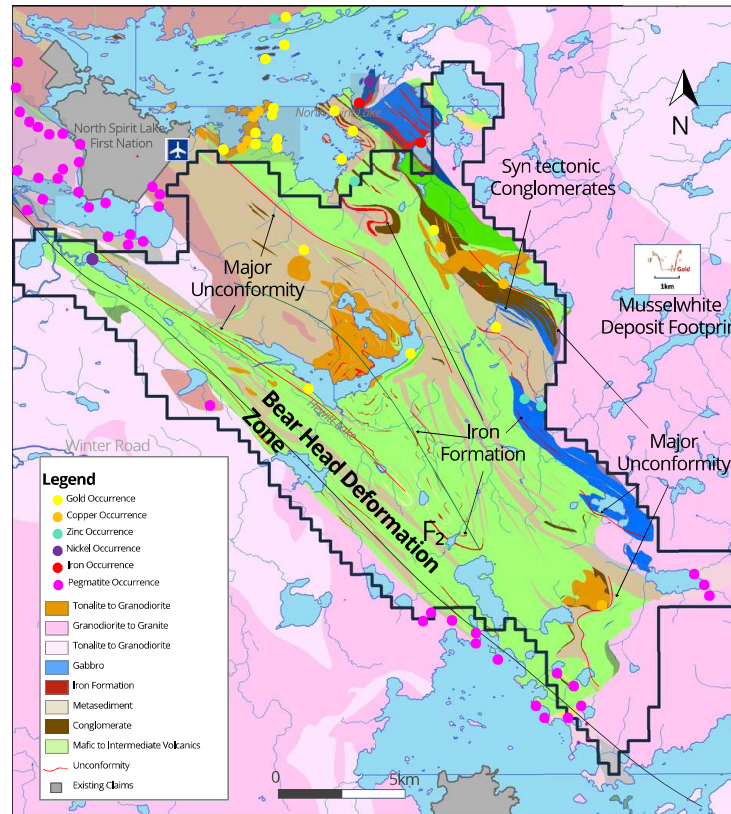
- Located 30km from Frontier Lithium's Deposits.
- Measured and Indicated Resources of:
 - **Pak:** 9.9 Mt @2% LiO₂
 - **Spark:** 18.8 Mt @1.52% Li₂O - Indicated & 29.7 Mt, @1.34% Li₂O - Inferred.
 - 398.25 metres of pegmatite averaging 1.88% Li₂O.
- Targeting two-mica granite pegmatites defined in regional OGS mapping.
- Same pegmatites on Blaze property.
- Additional staking completed recently to capture more of the known occurrences.



Source: <https://www.frontierlithium.com/>

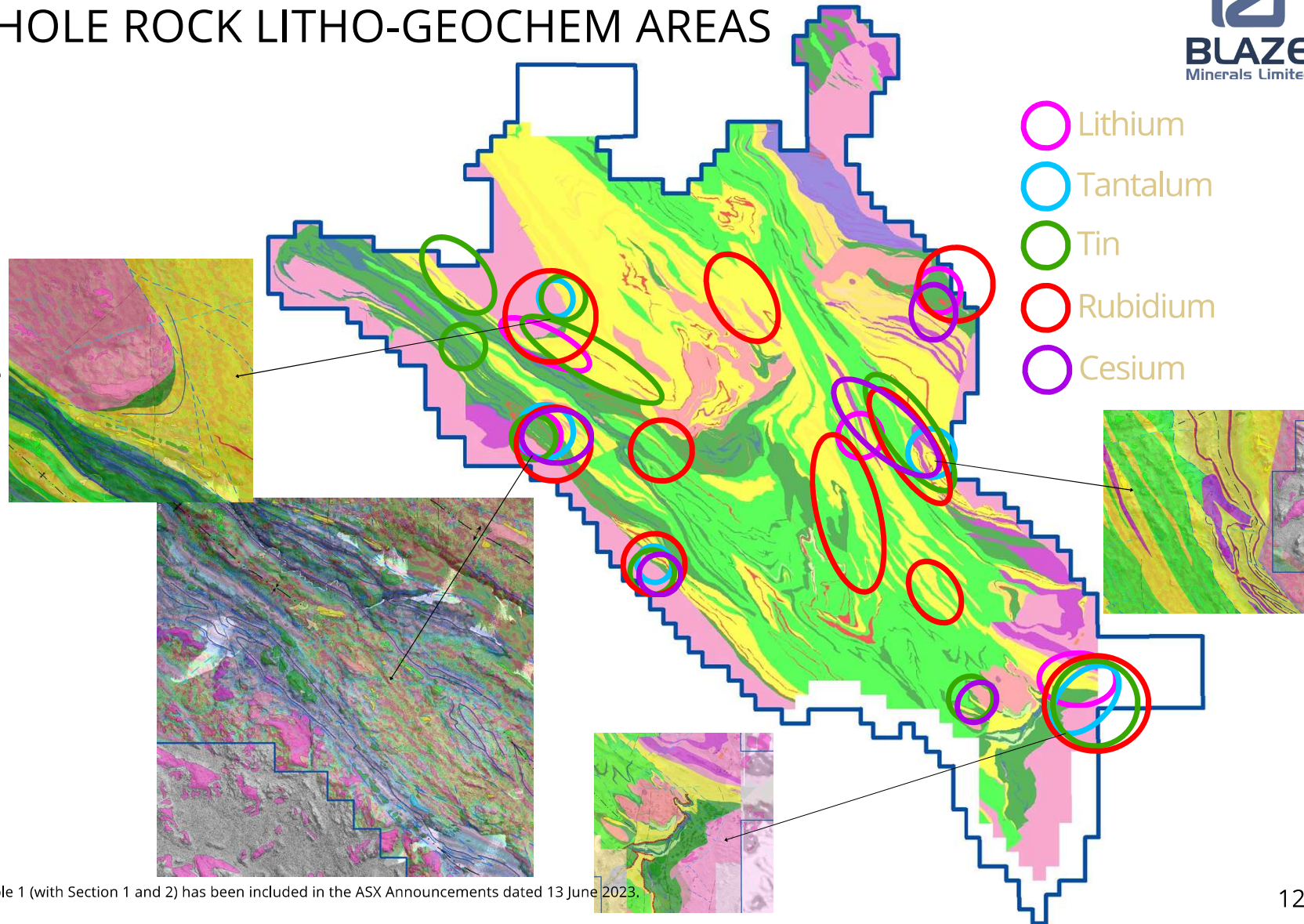
BEAR HEAD DEFORMATION ZONE

- A major 1st order crustal-scale structure extending over 400 km that cuts through the property.
- Host to several historic gold and more recent lithium deposits.
- Mineralization localized within greenstone sequences along 2nd and 3rd order shears.



ANOMALOUS WHOLE ROCK LITHO-GEOCHEM AREAS

- Whole rock analysis of the litho-geochemical data reveals multiple areas of fractionation and enrichment in key volatile elements.
- These largely occur along the outer margins of the North Spirit Lake Greenstone Assemblage.
- A targeted initiative within several of these areas would be an efficient initial approach.
- Several areas could be tested rather quickly utilizing the recent interpretation alongside recent magnetics and Lidar data.



*JORC Table 1 (with Section 1 and 2) has been included in the ASX Announcements dated 13 June 2023.

EARLY TARGETS

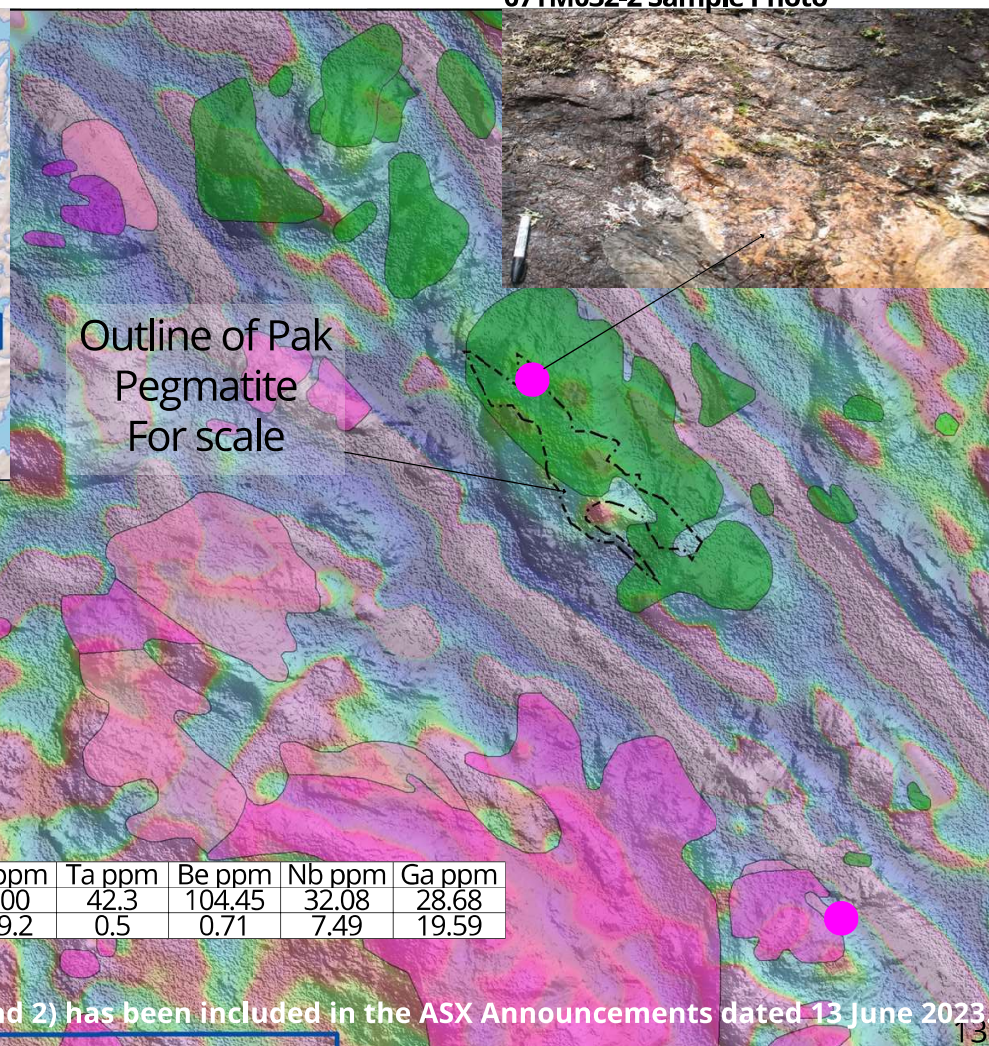
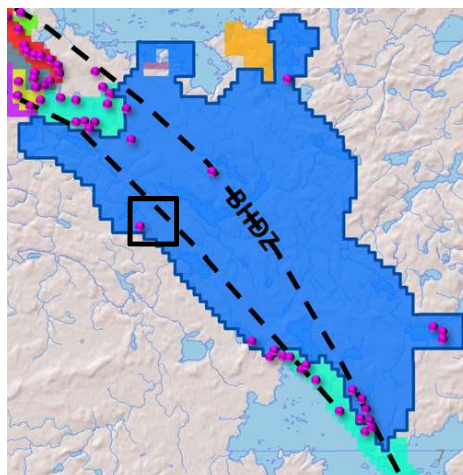
07TM032-2 Sample Photo



2001 (HLM): Pak Assay Numbers when working on outer wall zone

Sample	Li ppm	Cs ppm	Rb ppm	Ta ppm	Be ppm	Nb ppm	Ga ppm
M752508	5910	1110	4940	148	946	108	52
M752509	2470	700	6040	213	88	90	27
M752510	4900	691	5490	56	420	77	32
M752511	5670	1110	5070	181	541	119	52
M752512	8280	1080	5070	131	513	114	48
M761800	2080	779	8520	100	30	116	35
M761801	4340	880	7520	619	163	157	45
M761802	3180	772	8260	176	108	120	43
M761803	4810	903	440	123	254	86	31
M761804	2190	729	6000	102	83	99	33
M761805	731	698	9210	41	29	102	22
M761806	3980	882	5720	174	113	121	40

Source: Frontier Lithium 2001 Sampling & Assaying Exploration Program

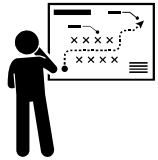


2007 OGS Samples

Sample	Li ppm	Cs ppm	Rb ppm	Ta ppm	Be ppm	Nb ppm	Ga ppm
07tm032-2	>4000	17.816	>300	42.3	104.45	32.08	28.68
07tm032-1	1390.4	37.098	109.2	0.5	0.71	7.49	19.59

*JORC Table 1 (with Section 1 and 2) has been included in the ASX Announcements dated 13 June 2023.

NEXT STEPS



REVIEW & STRATEGIZE



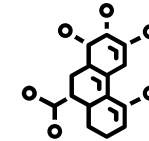
DISCUSS



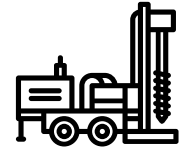
MAP



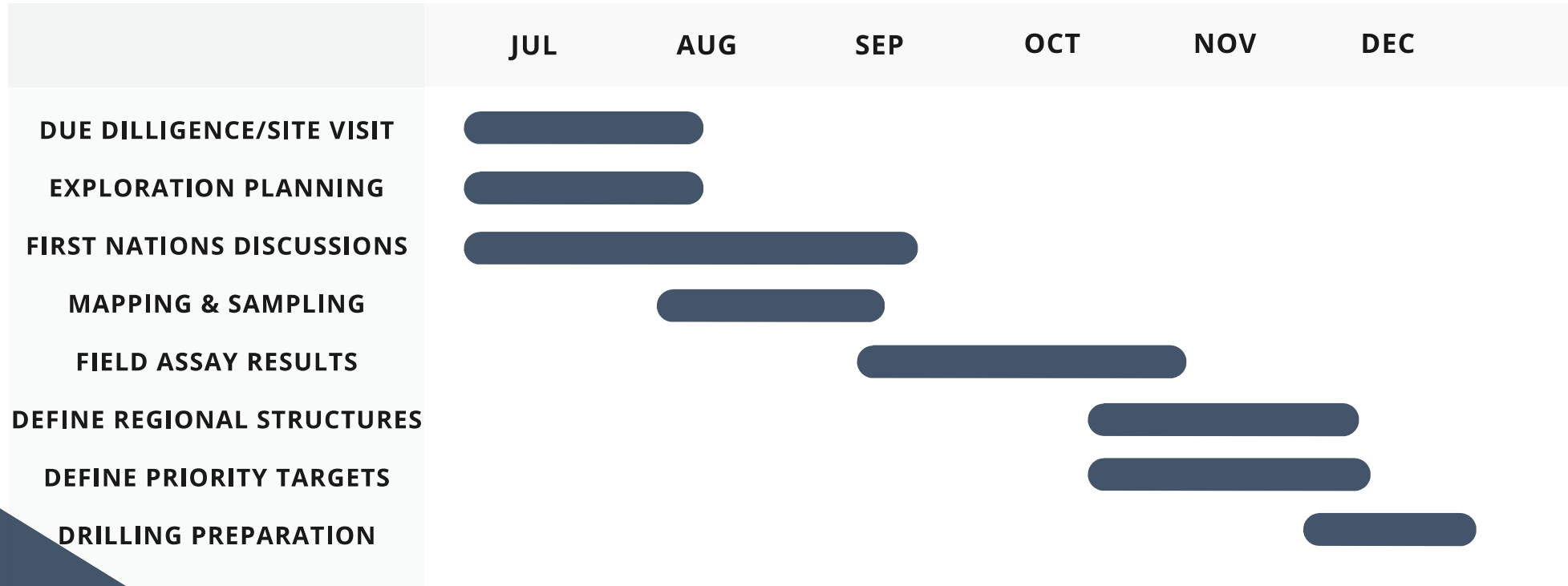
EXPLORE



ANALYZE



DRILL





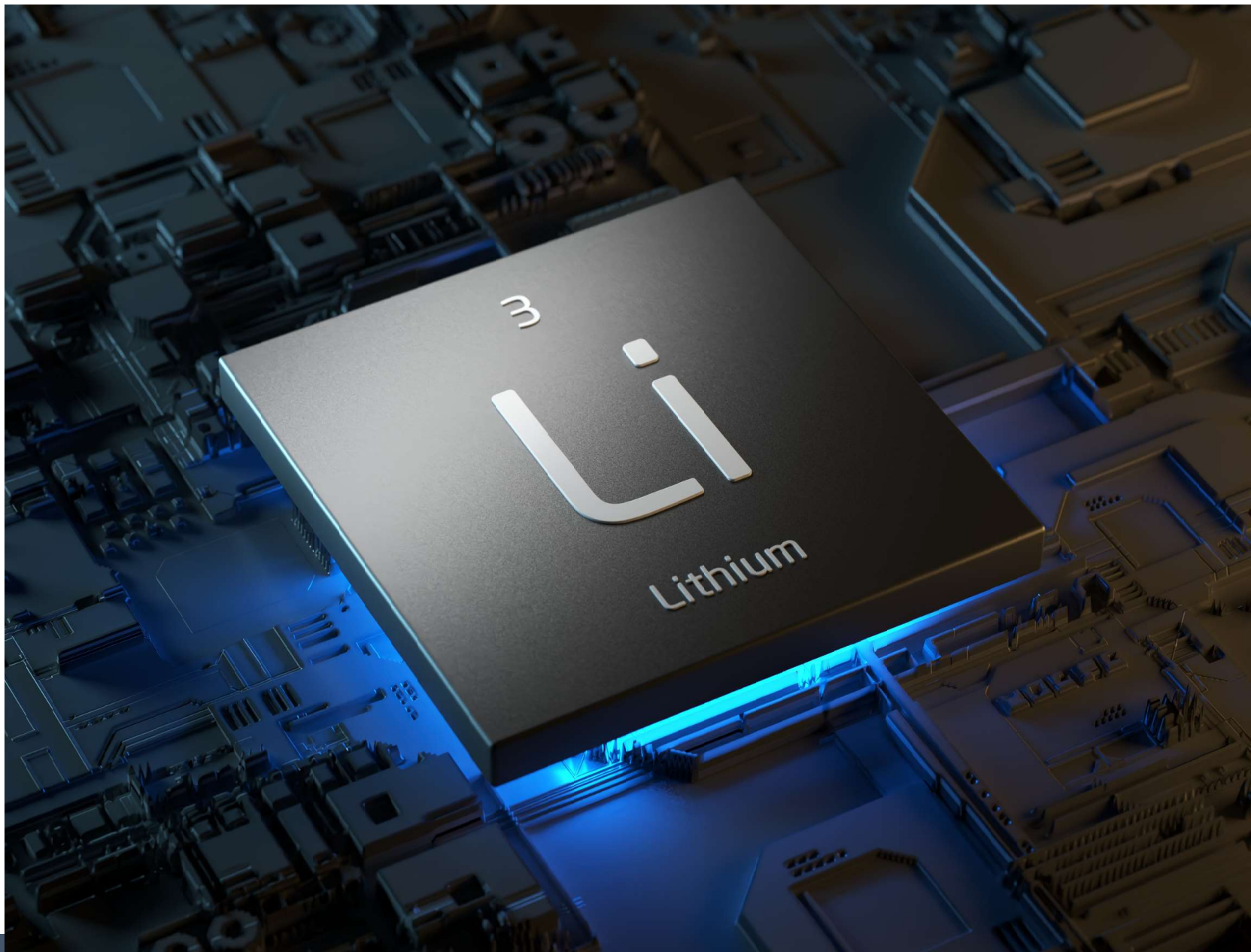
Mathew Walker
Corporate Director



info@blazelimited.com.au



<https://www.blazelimited.com.au/>



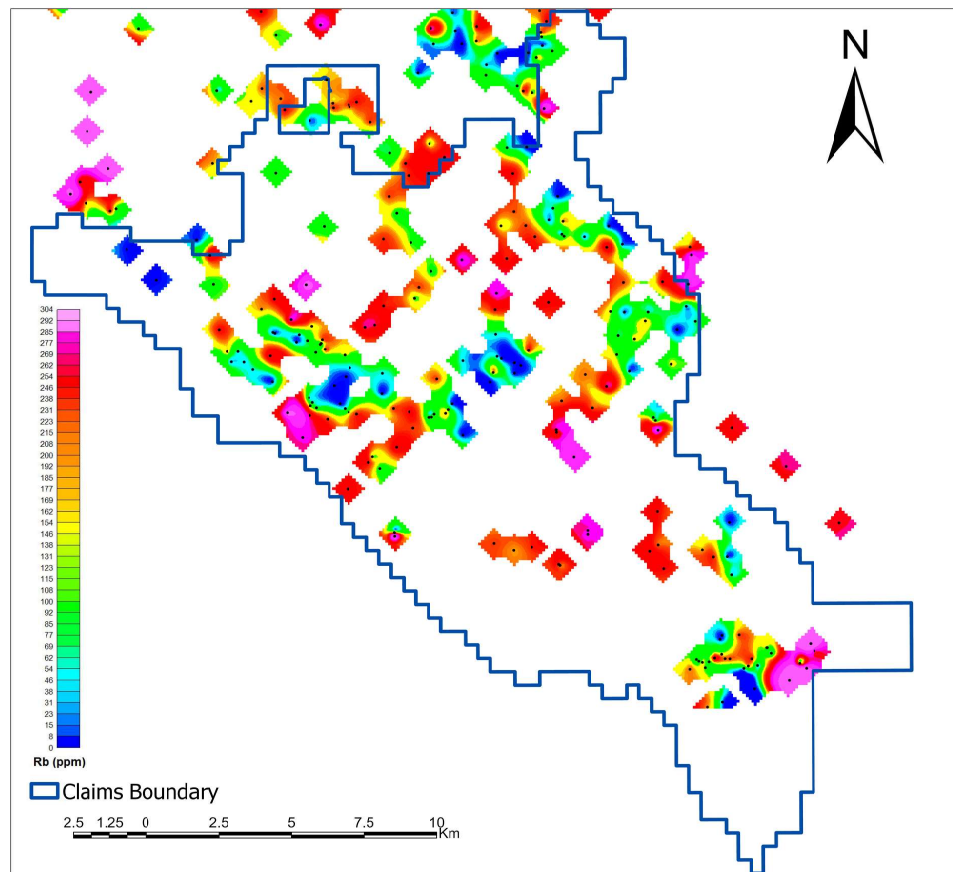
APPENDICIES



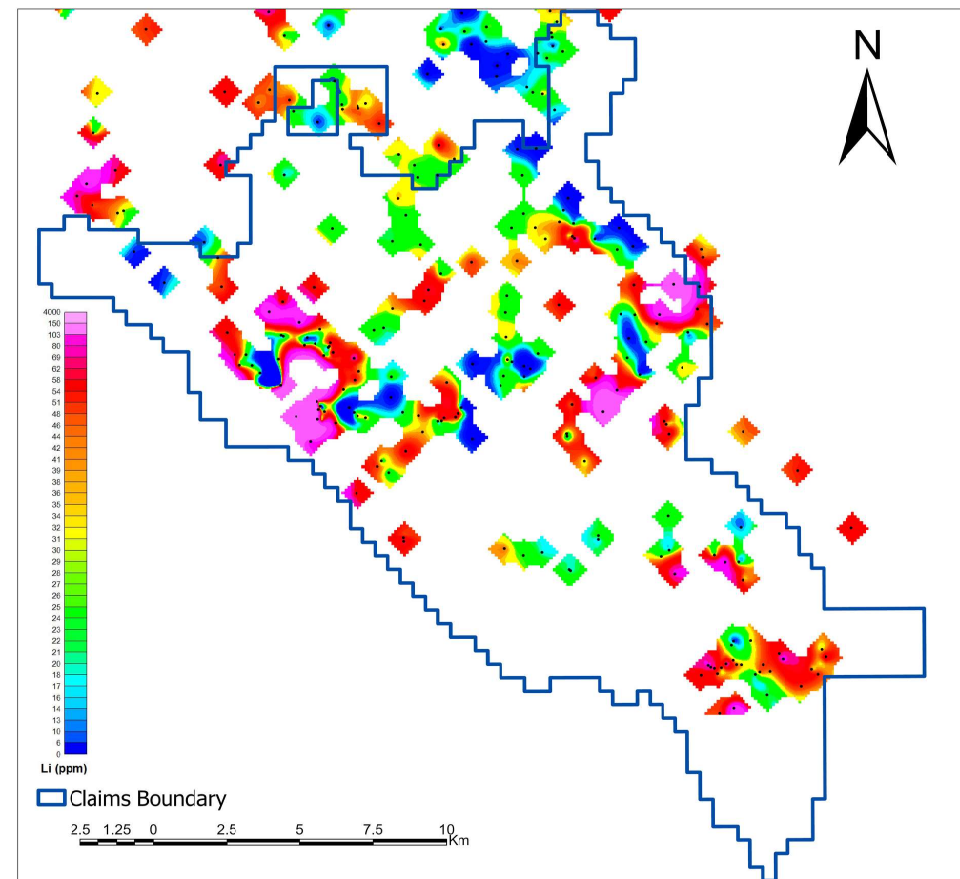
ASX Release Reference

This report contains information extracted from reports cited herein. These are available to view on the website, www.blazelimited.com.au The Company confirms that it is not aware of any new information or data that materially affects the information included in the original market announcements.

2007 OGS Sampling

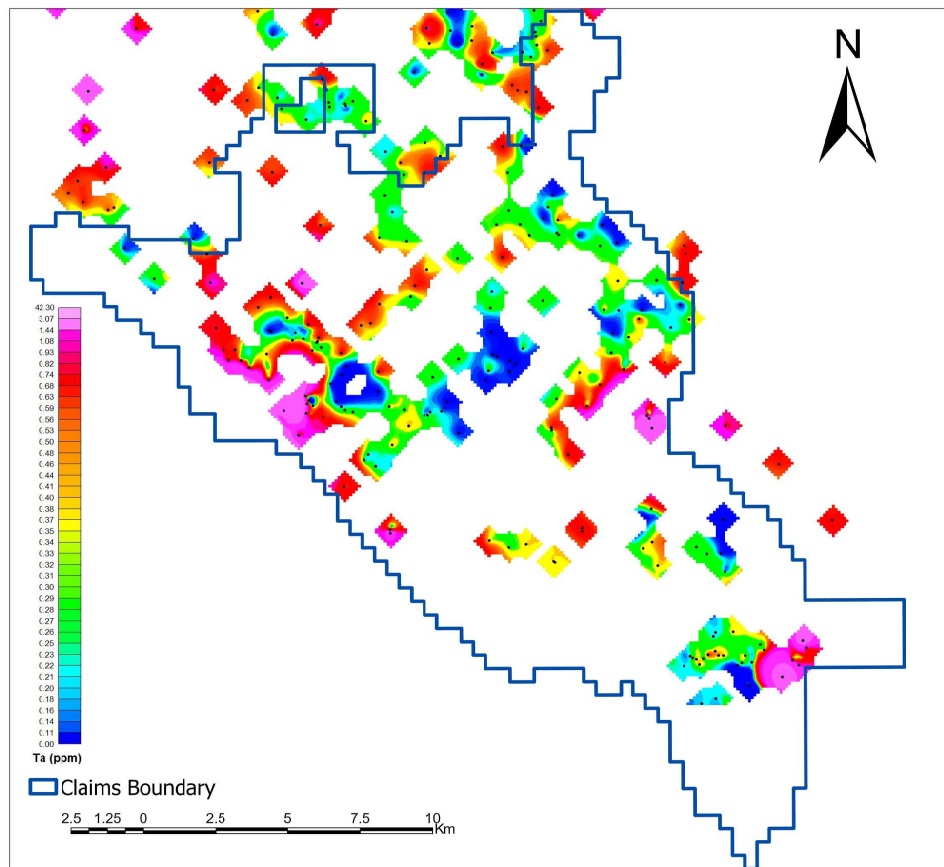


Rubidium

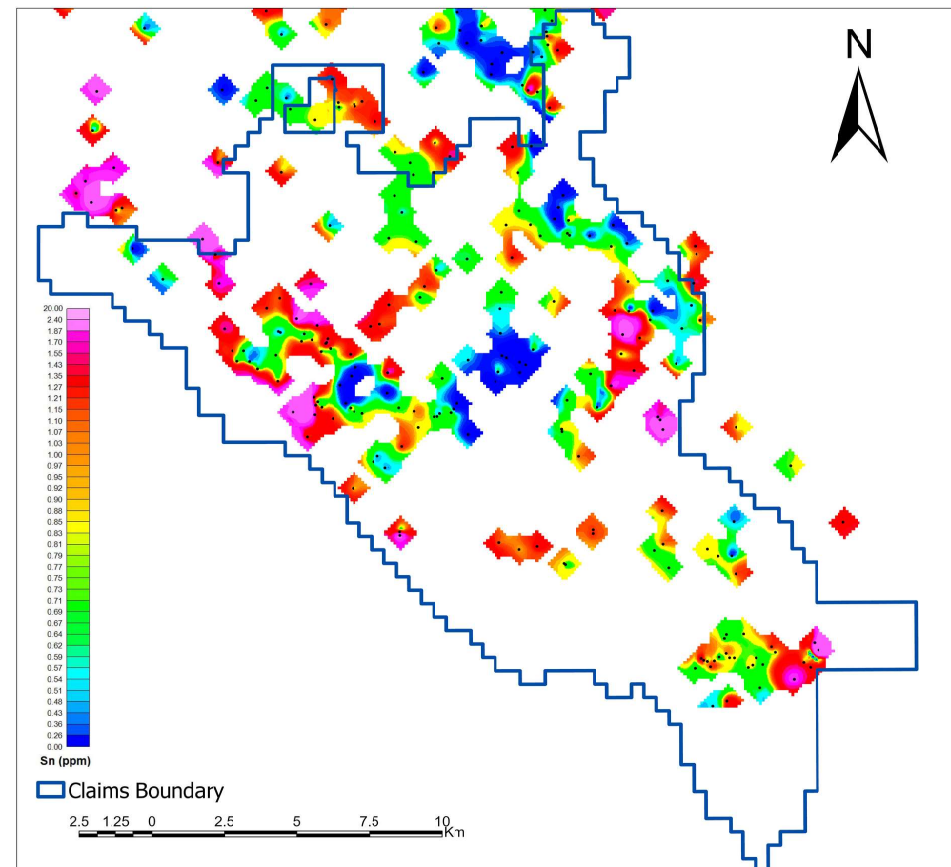


Lithium

2007 OGS Sampling



Tantalum



Tin

2007 OGS Sampling

Sample	Year	Easting	Northing	Project	Company	Sample_ty	Type	Ce_ppm	Ga_ppm	Li_ppm	Nb_ppm	Ni_ppm	Rb_ppm	Sn_ppm	Ta_ppm
07ah030-2	2007	536923	5805367	North Spirit Lake	OGS	Rock	ICP-MS	0.01	0.33	1	0.04	9	1.2	0.04	0.1
07ah034-1	2007	507991	5804185	North Spirit Lake	OGS	Rock	ICP-MS	60	18.82	34.3	4.93	12	68.8	0.83	0.4
07ah042	2007	535826	5806255	North Spirit Lake	OGS	Rock	ICP-MS	4	12.95	35.9	1.02	163	19.7	0.31	0.1
07ah094-1	2007	517715	5807871	North Spirit Lake	OGS	Rock	ICP-MS	20.6	22.16	45.2	6.58	33	28.2	1.11	0.4
07ah099	2007	518869	5806379	North Spirit Lake	OGS	Rock	ICP-MS	30.9	12.9	34.4	3.94	132	52.8	0.44	0.4
07ah102-2	2007	521507	5795928	North Spirit Lake	OGS	Rock	ICP-MS	74.3	16.14	46.6	12.4	8	188.7	1.22	1
07ah104-1	2007	521775	5796527	North Spirit Lake	OGS	Rock	ICP-MS	42.8	19.23	64.5	5.77	72	95.3	9.87	0.5
07ah106-1	2007	512644	5808519	North Spirit Lake	OGS	Rock	ICP-MS	36.3	17.83	51.3	4	39	85	0.79	0.3
07ah116-1	2007	514010	5800665	North Spirit Lake	OGS	Rock	ICP-MS	67.9	15.74	23.6	6.19	16	113	1.03	0.7
07ah123-2	2007	518865	5800947	North Spirit Lake	OGS	Rock	ICP-MS	6.8	15.02	12.9	1.97	183	1.6	0.43	0.1
07ah132-1	2007	516395	5801318	North Spirit Lake	OGS	Rock	ICP-MS	57.1	14.37	26.4	4.38	50	81.3	1.04	0.4
07ah137-1	2007	516423	5800169	North Spirit Lake	OGS	Rock	ICP-MS	72.9	14.01	14.4	5.79	80	62	1.01	0.4
07ah140-1	2007	519524	5796006	North Spirit Lake	OGS	Rock	ICP-MS	27.9	17.5	43.6	4.42	39	79.8	0.83	0.4
07ah141-3	2007	519375	5795923	North Spirit Lake	OGS	Rock	ICP-MS	6	0.65	5.2	0.14	349	1.9	0.78	0.1
07ah141-4	2007	519375	5795923	North Spirit Lake	OGS	Rock	ICP-MS	6.5	16.47	27.3	1.92	106	9.4	0.9	0.1
07ah144-2	2007	518880	5796256	North Spirit Lake	OGS	Rock	ICP-MS	37.9	17.72	34.4	4.41	56	72.2	0.84	0.4
07ah145-1	2007	518724	5796261	North Spirit Lake	OGS	Rock	ICP-MS	46.4	17.55	38.3	4.4	63	68.3	0.82	0.4
07ah147-1	2007	518612	5796411	North Spirit Lake	OGS	Rock	ICP-MS	45.1	18.18	31.1	4.49	47	48.5	0.99	0.4
07ah149-2	2007	518182	5796153	North Spirit Lake	OGS	Rock	ICP-MS	34.7	17.47	38.3	3.06	50	42.9	0.79	0.2
07ah150-1	2007	517957	5796134	North Spirit Lake	OGS	Rock	ICP-MS	40.2	18.15	74.3	4.51	34	56.7	0.83	0.4
07ah152-2	2007	518056	5795949	North Spirit Lake	OGS	Rock	ICP-MS	19.3	19.21	30.8	4.84	15	40.1	1.17	0.4
07ah154-1	2007	517752	5796237	North Spirit Lake	OGS	Rock	ICP-MS	24.3	11.4	86.4	3.11	78	8.1	1.61	0.2
07ah155-3	2007	517833	5796172	North Spirit Lake	OGS	Rock	ICP-MS	14.2	6.27	98.8	1.31	64	46.6	0.43	0.1
07ah158-2	2007	517519	5795898	North Spirit Lake	OGS	Rock	ICP-MS	44.3	17.38	45.4	2.82	49	67.1	0.64	0.2
07ah162-1	2007	511225	5810023	North Spirit Lake	OGS	Rock	ICP-MS	76.3	21.77	37.3	7.82	30	68.8	1.22	0.7
07ah178-1	2007	515000	5806716	North Spirit Lake	OGS	Rock	ICP-MS	20.9	14.35	21.1	2.43	104	46.5	0.69	0.2
07ah195-1	2007	513195	5810794	North Spirit Lake	OGS	Rock	ICP-MS	11.3	18.09	88.6	3.74	180	39.3	0.56	0.3
07ah203-1	2007	537422	5803532	North Spirit Lake	OGS	Rock	ICP-MS	96.4	20.26	60.8	5.8	54	97.7	1.17	0.4
07ah209-1	2007	517577	5810151	North Spirit Lake	OGS	Rock	ICP-MS	56.7	14.01	36.1	9.04	4	143.2	0.91	0.8
07ah220-1	2007	532772	5808286	North Spirit Lake	OGS	Rock	ICP-MS	49	20.43	163.6	5.55	329	64.5	1.1	0.5
07ah221-1	2007	503219	5808631	North Spirit Lake	OGS	Rock	ICP-MS	69.6	17.27	40.7	5.22	29	87	0.98	0.6
07ah225-1	2007	508193	5809036	North Spirit Lake	OGS	Rock	ICP-MS	28	17.49	70.2	5.59	103	71.4	1.12	0.6
07ah234-1	2007	508613	5809590	North Spirit Lake	OGS	Rock	ICP-MS	57.1	11.57	20.5	2.2	22	35.9	0.41	0.2
07ah234-1 SP	2007	508613	5809590	North Spirit Lake	OGS	Rock	ICP-MS	57.3	11.68	20.1	2.29	17	36.2	0.47	0.4
07JF026	2007	512393	5817797	Hewitt Lake	OGS	Rock	ICP-MS	19.3	19.57	30.6	1.68	34	79.1	0.44	0.2
07JF049	2007	533270	5812962	Hewitt Lake	OGS	Rock	ICP-MS	23.6	14.26	17.4	3.83	73	40.5	0.86	0.5
07JF081	2007	537826	5812877	Hewitt Lake	OGS	Rock	ICP-MS	59.3	17.6	23.7	3.71	30	78.5	0.7	0.3
07JF085A	2007	507917	5810576	Hewitt Lake	OGS	Rock	ICP-MS	141	15.47	35.4	3.59	9	50.5	0.73	0.3
07JF134	2007	530547	5810665	Hewitt Lake	OGS	Rock	ICP-MS	6.6	12.57	12.4	1.85	148	1.4	6.11	0.1
07JF173	2007	501006	5810128	Hewitt Lake	OGS	Rock	ICP-MS	112	17.45	35.4	6.84	11	110.8	0.63	0.4
07JF174	2007	501128	5809140	Hewitt Lake	OGS	Rock	ICP-MS	20.1	10.42	40.4	4.86	23	38.9	1.9	1.2
07JF217	2007	512098	5815729	Hewitt Lake	OGS	Rock	ICP-MS	34.4	15.85	33.2	6.07	67	31.1	0.51	0.5
07JF262	2007	501317	5807576	Hewitt Lake	OGS	Rock	ICP-MS	137.7	18.93	50	16.05	16	85.1	1.79	0.9
07JF279	2007	511485	5811637	Hewitt Lake	OGS	Rock	ICP-MS	33.8	18.11	27.6	3.74	42	68.7	0.68	0.3
07JF280	2007	511860	5811159	Hewitt Lake	OGS	Rock	ICP-MS	49.9	17.62	33.3	4.15	43	68.9	0.78	0.3
07JF282	2007	511026	5811149	Hewitt Lake	OGS	Rock	ICP-MS	42.7	19.01	18.4	4.07	82	44	0.83	0.3
07JF353	2007	539068	5813507	Hewitt Lake	OGS	Rock	ICP-MS	1	16.06	33.8	2.65	32	110.3	1.82	0.3
07JF391	2007	511429	5812947	Hewitt Lake	OGS	Rock	ICP-MS	62.9	18.16	27	3.61	29	85.6	0.74	0.3
07JF421	2007	511886	5813860	Hewitt Lake	OGS	Rock	ICP-MS	1.2	2.84	1.1	0.25	1691	1.2	0.04	0.1
07JF424	2007	507917	5810576	Hewitt Lake	OGS	Rock	ICP-MS	30.1	16.65	20.5	3.31	54	37.2	0.74	0.3
07JF425	2007	511233	5813834	Hewitt Lake	OGS	Rock	ICP-MS	4.4	19.03	8.3	7.36	107	21.4	1.61	0.7
07Is005-1	2007	533799	5807929	North Spirit Lake	OGS	Rock	ICP-MS	85.9	18.08	131.7	4.91	28	135.3	3.14	0.4
07Is021	2007	511485	5806432	North Spirit Lake	OGS	Rock	ICP-MS	2.2	1.06	1.3	0.04	31	5.7	0.08	0.1
07Is031-2	2007	539326	5805017	North Spirit Lake	OGS	Rock	ICP-MS	1.4	0.53	0.3	0.02	3	0.8	0.08	0.1
07Is076-1	2007	515227	5809203	North Spirit Lake	OGS	Rock	ICP-MS	16.1	14.93	65.2	4.49	65	67.8	0.9	0.4
07Is076-1 SP	2007	515227	5809203	North Spirit Lake	OGS	Rock	ICP-MS	16.8	15.05	63.8	4.63	69	70.9	0.98	0.4
07Is076-2	2007	515227	5809203	North Spirit Lake	OGS	Rock	ICP-MS	25.1	14.01	40.1	4.45	64	77.3	0.61	0.4
07Is079	2007	514766	5808212	North Spirit Lake	OGS	Rock	ICP-MS	25.1	14.06	17.2	4.22	83	48.9	0.89	0.4
07Is103-1	2007	534405	5805225	North Spirit Lake	OGS	Rock	ICP-MS	33.7	24.34	54.4	5.94	276	16.8	1.16	0.5
07Is109-1	2007	535038	5804491	North Spirit Lake	OGS	Rock	ICP-MS	30	17.77	38.4	5.36	51	70.8	1.02	0.5

2007 OGS Sampling



Sample	Year	Easting	Northing	Project	Company	Sample_ty	Type	Ce_ppm	Ga_ppm	Li_ppm	Nb_ppm	Ni_ppm	Rb_ppm	Sn_ppm	Ta_ppm
07Is109-1	2007	505038	5804431	North Spirit Lake	OGS	Rock	ICP-MS	30	17.77	38.4	5.36	51	70.8	1.02	0.5
07Is118-2	2007	519221	5797081	North Spirit Lake	OGS	Rock	ICP-MS	49.2	17.69	31.9	4.8	34	74.9	0.83	0.4
07Is121-1	2007	518618	5797060	North Spirit Lake	OGS	Rock	ICP-MS	10	15.9	7.8	2.36	85	3.1	0.6	0.2
07Is122-1	2007	518551	5796923	North Spirit Lake	OGS	Rock	ICP-MS	9	16.71	27.7	2.42	117	3.2	0.63	0.2
07Is126-2	2007	518378	5796286	North Spirit Lake	OGS	Rock	ICP-MS	26.2	14.72	99.6	5.67	208	111.5	0.64	0.6
07Is129-2	2007	511468	5799986	North Spirit Lake	OGS	Rock	ICP-MS	48.6	17.54	27.6	3.87	21	60.8	0.89	0.3
07Is134-2	2007	510788	5800221	North Spirit Lake	OGS	Rock	ICP-MS	84.5	17.85	38.6	3.98	58	72.9	0.95	0.3
07Mv036	2007	508512	5812949	Hewitt Lake	OGS	Rock	ICP-MS	131	19.3	25	6.27	12	85.2	0.87	0.6
07Mv168	2007	501095	5813237	Hewitt Lake	OGS	Rock	ICP-MS	20.8	18.63	73.9	5.4	13	61	0.84	0.5
07Mv182	2007	498153	5810341	Hewitt Lake	OGS	Rock	ICP-MS	2.3	4.75	10.1	0.71	1905	1.5	0.09	0.1
07NH007	2007	512575	5818177	Hewitt Lake	OGS	Rock	ICP-MS	48.5	17.78	28.6	3.62	39	85.6	0.76	0.3
07NH088	2007	511778	5815778	Hewitt Lake	OGS	Rock	ICP-MS	37.2	15.61	23	5.62	70	82.3	2.07	0.5
07NH165	2007	512500	5815180	Hewitt Lake	OGS	Rock	ICP-MS	10.4	14.26	17.1	11.1	15	163	1.44	0.9
07sb008-2	2007	504339	5807203	North Spirit Lake	OGS	Rock	ICP-MS	26.7	9.84	16	2.1	20	32.4	0.81	0.2
07sb013-1	2007	503167	5807485	North Spirit Lake	OGS	Rock	ICP-MS	6.7	14.58	20	1.85	83	8	0.52	0.1
07sb014-1	2007	503242	5807453	North Spirit Lake	OGS	Rock	ICP-MS	5.8	12.49	11.4	1.49	108	3.9	0.43	0.1
07sb016-2	2007	503972	5807146	North Spirit Lake	OGS	Rock	ICP-MS	18.6	14.59	18.2	2.98	196	1.6	0.74	0.2
07sb020-1	2007	505486	5805019	North Spirit Lake	OGS	Rock	ICP-MS	3	2.86	3.4	0.22	784	1.8	0.09	0.1
07sb028-3	2007	504436	5804619	North Spirit Lake	OGS	Rock	ICP-MS	30.8	22.03	47.1	8.36	76	101.1	1.49	0.6
07sb028-3 SP	2007	504436	5804619	North Spirit Lake	OGS	Rock	ICP-MS	30.8	21.5	42.4	8.3	76	97.3	1.47	0.7
07sb029-2	2007	504668	5804885	North Spirit Lake	OGS	Rock	ICP-MS	42.3	17.17	37.2	3.5	89	24	0.72	0.2
07sb042-1	2007	510868	5808833	North Spirit Lake	OGS	Rock	ICP-MS	25.2	13.14	23	2.98	370	132.1	0.73	0.2
07sb049-2	2007	505744	5802087	North Spirit Lake	OGS	Rock	ICP-MS	44.4	16.75	44.9	4.94	15	85.8	0.84	0.5
07sb058-1	2007	505649	5804853	North Spirit Lake	OGS	Rock	ICP-MS	27.3	11.1	21.9	2.41	55	17	1.11	0.2
07sb059-1	2007	517394	5808385	North Spirit Lake	OGS	Rock	ICP-MS	9.2	13.33	42.4	1.7	186	3.9	0.44	0.1
07sb062-1	2007	517077	5807588	North Spirit Lake	OGS	Rock	ICP-MS	12.8	16.71	15.1	3.65	148	2.5	0.61	0.2
07sb078-1	2007	511895	5806337	North Spirit Lake	OGS	Rock	ICP-MS	1.1	5.06	4.7	0.21	1117	0.3	0.04	0.1
07sb085-1	2007	511493	5806072	North Spirit Lake	OGS	Rock	ICP-MS	1.8	4.14	7	0.24	1377	0.7	0.09	0.1
07sb095-1	2007	507351	5800592	North Spirit Lake	OGS	Rock	ICP-MS	11	17.76	44.1	3.12	91	20.7	0.73	0.2
07sb098-1	2007	510843	5807425	North Spirit Lake	OGS	Rock	ICP-MS	5	16.84	33.9	1.5	195	22.6	0.52	0.1
07sb107	2007	507850	5804740	North Spirit Lake	OGS	Rock	ICP-MS	61.2	19.93	38.7	3.96	65	83.7	0.94	0.3
07sb108-1	2007	508518	5804554	North Spirit Lake	OGS	Rock	ICP-MS	4.1	11.61	9.3	1.23	453	0.8	0.51	0.1
07sb108-2	2007	508518	5804554	North Spirit Lake	OGS	Rock	ICP-MS	36.8	18.34	29.4	3.57	67	40.1	0.69	0.2
07sb109-1	2007	508639	5804564	North Spirit Lake	OGS	Rock	ICP-MS	51.7	18.69	26.8	3.95	13	56.7	0.73	0.3
07sb111-1	2007	508727	5804664	North Spirit Lake	OGS	Rock	ICP-MS	3.9	16.62	106.6	1.17	240	2.5	0.28	0.1
07sb112-2	2007	509700	5806505	North Spirit Lake	OGS	Rock	ICP-MS	18.7	10.77	3.5	3.74	657	16.8	0.54	0.3
07sb125-1	2007	509105	5804696	North Spirit Lake	OGS	Rock	ICP-MS	43.3	20.56	51	3.46	9	68.4	0.85	0.2
07sb126-1	2007	509193	5804820	North Spirit Lake	OGS	Rock	ICP-MS	4	14.1	75.7	0.6	180	43.2	0.23	0.1
07sb132-1	2007	516075	5808188	North Spirit Lake	OGS	Rock	ICP-MS	2.6	10.84	133.4	0.58	378	22.6	0.16	0.1
07sb133-1	2007	515983	5807887	North Spirit Lake	OGS	Rock	ICP-MS	28.9	12.73	39.6	4.41	112	64.4	0.61	0.5
07sb153-1	2007	515190	5810520	North Spirit Lake	OGS	Rock	ICP-MS	6.7	13.71	8.3	1.07	120	6	0.39	0.1
07sb154-1	2007	514704	5811143	North Spirit Lake	OGS	Rock	ICP-MS	2.2	5.14	6.2	0.27	1006	1.8	0.23	0.1
07sb154-1 SP	2007	514704	5811143	North Spirit Lake	OGS	Rock	ICP-MS	2.3	5.06	6.4	0.3	987	1.8	0.24	0.1
07sb156	2007	516574	5809229	North Spirit Lake	OGS	Rock	ICP-MS	33.4	17.01	304.8	3.85	52	96.2	0.65	0.3
07sb157-1	2007	517467	5809147	North Spirit Lake	OGS	Rock	ICP-MS	56.1	14.55	88.4	9.98	3	150.6	1.64	0.9
07sb163-1	2007	502471	5806199	North Spirit Lake	OGS	Rock	ICP-MS	14.4	16.08	29.5	4	51	22.7	0.62	0.3
07sb175-2	2007	521640	5796780	North Spirit Lake	OGS	Rock	ICP-MS	30.1	24.34	29	38.56	5	300	2.45	6.5
07sb177-1	2007	521282	5796098	North Spirit Lake	OGS	Rock	ICP-MS	11.3	18.37	28	3.3	93	2.2	0.76	0.2
07sb196-1	2007	504645	5806795	North Spirit Lake	OGS	Rock	ICP-MS	90.4	20.15	24.9	5.13	70	35.7	0.75	0.3
07sb203-1	2007	518131	5794594	North Spirit Lake	OGS	Rock	ICP-MS	19.2	16.38	44.8	2.19	72	60.3	0.55	0.2
07sb209-3	2007	519639	5796256	North Spirit Lake	OGS	Rock	ICP-MS	46.8	17.17	43.8	4.58	41	82.7	0.8	0.4
07sb214-1	2007	513011	5799506	North Spirit Lake	OGS	Rock	ICP-MS	46.2	19.06	18.9	4.36	37	82	0.83	0.4
07sb215-1	2007	513062	5799467	North Spirit Lake	OGS	Rock	ICP-MS	36.4	15.08	18.1	3.47	17	53.6	0.67	0.3
07sb220-1	2007	514008	5800531	North Spirit Lake	OGS	Rock	ICP-MS	39.4	17.5	13.2	7.57	7	150.3	1.16	0.7
07sb227-1	2007	518338	5799758	North Spirit Lake	OGS	Rock	ICP-MS	26	16.96	102.6	4.01	39	77.2	0.83	0.3
07sb236-1	2007	516328	5804444	North Spirit Lake	OGS	Rock	ICP-MS	32.9	19.98	22.3	12.3	15	4.6	1.75	0.8
07sb239-1	2007	516251	5804547	North Spirit Lake	OGS	Rock	ICP-MS	22.4	15.3	53.8	3.63	85	78.8	2.85	0.4
07sb239-3	2007	516251	5804547	North Spirit Lake	OGS	Rock	ICP-MS	6.6	12.99	90	1.12	295	14	0.33	0.1
07sb242-1	2007	515424	5806145	North Spirit Lake	OGS	Rock	ICP-MS	9.1	5.68	5.3	1.88	72	4.4	1.45	0.1
07sb257-1	2007	516611	5799356	North Spirit Lake	OGS	Rock	ICP-MS	42.3	16.99	87.3	3.94	19	83.6	0.7	0.4

2007 OGS Sampling



Sample	Year	Easting	Northing	Project	Company	Sample_ty	Type	Ce_ppm	Ga_ppm	Li_ppm	Nb_ppm	Ni_ppm	Rb_ppm	Sn_ppm	Ta_ppm
07sb258-1	2007	516126	5799952	North Spirit Lake	OGS	Rock	ICP-MS	45.8	16.96	25.2	4.92	21	92.4	0.7	0.4
07sb261-1	2007	517955	5799999	North Spirit Lake	OGS	Rock	ICP-MS	54.6	13.07	19.2	4.25	162	59	0.83	0.3
07sb265-1	2007	518942	5799147	North Spirit Lake	OGS	Rock	ICP-MS	5.2	16.88	26.3	1.31	28	5.6	1.07	0.1
07sb270-1	2007	518793	5799766	North Spirit Lake	OGS	Rock	ICP-MS	4.2	1.63	8.3	0.48	3	0.8	0.27	0.1
07sb271-2	2007	519868	5796025	North Spirit Lake	OGS	Rock	ICP-MS	8.8	14.88	37.1	2.62	97	10	0.66	0.2
07sb274-1	2007	519762	5795226	North Spirit Lake	OGS	Rock	ICP-MS	12.1	19.21	21.4	3.74	18	2	0.71	0.3
07sb279-2	2007	518634	5794771	North Spirit Lake	OGS	Rock	ICP-MS	10.4	21.57	126.3	3.64	116	5.3	1.3	0.2
07sb282-2	2007	519750	5800044	North Spirit Lake	OGS	Rock	ICP-MS	70.3	17.76	99.9	4.29	24	74.4	0.69	0.3
07tm149	2007	513109	5805119	North Spirit Lake	OGS	Rock	ICP-MS	42.9	18.83	36.6	3.6	27	63.9	0.76	0.3
07tm177-3	2007	514639	5810413	North Spirit Lake	OGS	Rock	ICP-MS	33.2	15.89	25.8	3.53	21	102.6	0.82	0.3
07tm181-3	2007	513119	5810862	North Spirit Lake	OGS	Rock	ICP-MS	65.1	11.84	7.9	2.13	571	2.4	1.03	0.2
07tm184-3	2007	512193	5810775	North Spirit Lake	OGS	Rock	ICP-MS	42	17.62	29.8	3.75	24	73.7	0.68	0.3
07tm196-3	2007	520169	5796637	North Spirit Lake	OGS	Rock	ICP-MS	26.1	13.97	76.4	3.89	108	54.5	1.36	0.3
07tm196-3 SP	2007	520169	5796637	North Spirit Lake	OGS	Rock	ICP-MS	22.1	12.05	57.7	3.52	92	45.6	1.01	0.3
07tm197-3	2007	520296	5796447	North Spirit Lake	OGS	Rock	ICP-MS	3.4	17.61	100	3.2	124	3.9	0.71	0.2
07tm203-3	2007	520926	5795520	North Spirit Lake	OGS	Rock	ICP-MS	48.4	20.69	43.4	26.34	3	254.3	2.16	4.9
07tm213-3	2007	512085	5800089	North Spirit Lake	OGS	Rock	ICP-MS	41.4	23.16	18	4.08	33	79.7	1.39	0.4
07tm251-3	2007	516418	5804110	North Spirit Lake	OGS	Rock	ICP-MS	3.3	33.49	67.3	42.01	5	170.4	7.17	21
07tm264-3	2007	513528	5803188	North Spirit Lake	OGS	Rock	ICP-MS	57.4	13.71	28.7	8.21	5	163.1	1	0.8
07tm317-3	2007	508047	5808662	North Spirit Lake	OGS	Rock	ICP-MS	24.2	17.18	54.8	4.14	40	39.4	0.5	0.3
07tm319-3	2007	509699	5803944	North Spirit Lake	OGS	Rock	ICP-MS	0.6	2.52	1.5	0.07	1718	0.9	0.04	0.1
07tm334-3	2007	514169	5804879	North Spirit Lake	OGS	Rock	ICP-MS	5.8	15.04	318.8	0.61	332	6.3	0.25	0.1
07tm342-3	2007	512929	5804128	North Spirit Lake	OGS	Rock	ICP-MS	46.8	13.89	24.3	7.12	9	123.1	0.93	0.6
07tm343-3	2007	512945	5804039	North Spirit Lake	OGS	Rock	ICP-MS	19.4	7.48	5.7	2.97	6	40.1	0.52	0.2
07tm347-3	2007	510887	5806655	North Spirit Lake	OGS	Rock	ICP-MS	4.7	16.29	46.3	1.63	137	18.4	0.2	0.1
07tm347-3 SP	2007	510887	5806655	North Spirit Lake	OGS	Rock	ICP-MS	5.5	15.87	43.5	1.67	127	18.6	0.26	0.1
07tm351-3	2007	510820	5808267	North Spirit Lake	OGS	Rock	ICP-MS	43.2	18.35	23	3.48	22	83.4	0.55	0.3
07tm364-3	2007	513891	5810773	North Spirit Lake	OGS	Rock	ICP-MS	10.9	9.22	7.1	0.88	163	9	0.33	0.1
07tm370-3	2007	506448	5803005	North Spirit Lake	OGS	Rock	ICP-MS	18.6	11.94	42.5	2.66	457	81.9	0.5	0.2
07tm372-3	2007	506847	5802793	North Spirit Lake	OGS	Rock	ICP-MS	23.5	13.66	22.2	2.93	352	35.8	0.45	0.2
07tm374-3	2007	506590	5803200	North Spirit Lake	OGS	Rock	ICP-MS	26.4	16.62	23.3	2.42	72	41.1	0.46	0.2
07tm379-3	2007	515624	5807260	North Spirit Lake	OGS	Rock	ICP-MS	20.9	9.92	25.5	3.52	88	58.9	0.69	0.4
07tm380-3	2007	515060	5807381	North Spirit Lake	OGS	Rock	ICP-MS	5.9	3.41	6.7	1.25	70	24.3	3.1	0.1
07tm384-3	2007	515256	5808188	North Spirit Lake	OGS	Rock	ICP-MS	7.8	16.79	24.9	2.93	49	6.4	0.24	0.2
07tm388-3	2007	504295	5809120	North Spirit Lake	OGS	Rock	ICP-MS	14.1	19.54	47.9	20.28	1.5	185.9	1.67	5.7
07tm402-3	2007	509668	5809980	North Spirit Lake	OGS	Rock	ICP-MS	36.6	16.38	44	3.95	132	131.9	0.59	0.3
07tm430-2	2007	501970	5806825	North Spirit Lake	OGS	Rock	ICP-MS	24.4	20.83	26.1	8.53	52	18.1	0.55	0.6
07tm433-2	2007	501583	5806823	North Spirit Lake	OGS	Rock	ICP-MS	25.7	25.53	73.7	9.47	103	64.1	1.11	0.6
07tm009-2	2007	504955	5806899	North Spirit Lake	OGS	Rock	ICP-MS	20.4	10.23	96.7	3.03	51	87.7	0.74	0.3
07tm010-2	2007	504795	5807069	North Spirit Lake	OGS	Rock	ICP-MS	17.3	6.35	7.3	1.82	27	6.8	1.25	0.2
07tm012-2	2007	504064	5807406	North Spirit Lake	OGS	Rock	ICP-MS	8.6	5.15	9.2	1.83	18	18.2	0.53	0.2
07tm015-2	2007	504514	5807695	North Spirit Lake	OGS	Rock	ICP-MS	58.5	18.33	35.6	8.33	50	48.2	1.95	0.9
07tm018-2	2007	506341	5807663	North Spirit Lake	OGS	Rock	ICP-MS	51.3	17.84	27.1	5.1	18	116.5	1.41	0.4
07tm019-2	2007	506990	5808401	North Spirit Lake	OGS	Rock	ICP-MS	32.1	16.66	35.7	5.21	50	75.7	1.07	0.4
07tm021-2	2007	506670	5807740	North Spirit Lake	OGS	Rock	ICP-MS	33.5	17.55	20	5.93	11	107.3	0.95	0.5
07tm022-2	2007	505646	5806703	North Spirit Lake	OGS	Rock	ICP-MS	45.6	22.84	101.5	6.33	58	55.1	1.7	0.7
07tm023-2	2007	506937	5806068	North Spirit Lake	OGS	Rock	ICP-MS	15.6	23.22	28.5	6.6	68	21.7	2.06	0.7
07tm025	2007	505679	5805955	North Spirit Lake	OGS	Rock	ICP-MS	2.3	8.56	51.8	0.42	556	5.7	0.14	0.1
07tm030	2007	504461	5804951	North Spirit Lake	OGS	Rock	ICP-MS	14.9	7.44	11.4	1.99	19	22.5	0.65	0.2
07tm032-1	2007	503678	5804711	North Spirit Lake	OGS	Rock	ICP-MS	25.5	19.59	1390.4	7.49	44	109.2	1.05	0.5
07tm032-2	2007	503678	5804711	North Spirit Lake	OGS	Rock	ICP-MS	0.4	28.68	4000	32.08	1.5	300	16.68	42.3
07tm098-2	2007	508815	5805872	North Spirit Lake	OGS	Rock	ICP-MS	31.1	19.12	37.4	3.51	15	74.5	0.78	0.3
07tm105	2007	507357	5800469	North Spirit Lake	OGS	Rock	ICP-MS	23.5	17.63	86.3	7.06	7	253.3	3.4	3.3
07tm105 SP	2007	507357	5800469	North Spirit Lake	OGS	Rock	ICP-MS	23.7	18.12	85.5	7.84	7	257.5	3.7	3.6
07tm111	2007	506057	5804671	North Spirit Lake	OGS	Rock	ICP-MS	35.4	19.56	34.4	3.62	24	79.3	0.8	0.3
07tm113	2007	505782	5804734	North Spirit Lake	OGS	Rock	ICP-MS	21.8	13.24	40.5	2.98	37	48.1	0.67	0.3
07tm121	2007	513922	5806029	North Spirit Lake	OGS	Rock	ICP-MS	40	17.5	41.1	4.24	33	65.6	0.7	0.4
07tm125	2007	514633	5805616	North Spirit Lake	OGS	Rock	ICP-MS	32.3	17.41	62.8	4.81	43	127.3	2.23	0.4

2007 OGS Sampling



Sample	Year	Easting	Northing	Project	Company	Sample_ty	Type	Ce_ppm	Ga_ppm	Li_ppm	Nb_ppm	Ni_ppm	Rb_ppm	Sn_ppm	Ta_ppm
07tm149	2007	513109	5805119	North Spirit Lake	OGS	Rock	ICP-MS	42.9	18.83	36.6	3.6	27	63.9	0.76	0.3
07tm177-3	2007	514639	5810413	North Spirit Lake	OGS	Rock	ICP-MS	33.2	15.89	25.8	3.53	21	102.6	0.82	0.3
07tm181-3	2007	513119	5810862	North Spirit Lake	OGS	Rock	ICP-MS	65.1	11.84	7.9	2.13	571	2.4	1.03	0.2
07tm184-3	2007	512193	5810775	North Spirit Lake	OGS	Rock	ICP-MS	42	17.62	29.8	3.75	24	73.7	0.68	0.3
07tm196-3	2007	520169	5796637	North Spirit Lake	OGS	Rock	ICP-MS	26.1	13.97	76.4	3.89	108	54.5	1.36	0.3
07tm196-3 SP	2007	520169	5796637	North Spirit Lake	OGS	Rock	ICP-MS	22.1	12.05	57.7	3.52	92	45.6	1.01	0.3
07tm197-3	2007	520296	5796447	North Spirit Lake	OGS	Rock	ICP-MS	9.4	17.61	100	3.2	124	3.9	0.71	0.2
07tm203-3	2007	520926	5795520	North Spirit Lake	OGS	Rock	ICP-MS	48.4	20.69	43.4	26.34	3	254.3	2.16	4.9
07tm213-3	2007	512085	5800089	North Spirit Lake	OGS	Rock	ICP-MS	41.4	23.16	18	4.08	33	79.7	1.39	0.4
07tm251-3	2007	516418	5804110	North Spirit Lake	OGS	Rock	ICP-MS	3.3	33.49	67.3	42.01	5	170.4	7.17	21
07tm264-3	2007	513528	5803188	North Spirit Lake	OGS	Rock	ICP-MS	57.4	13.71	28.7	8.21	5	163.1	1	0.8
07tm317-3	2007	508047	5808662	North Spirit Lake	OGS	Rock	ICP-MS	24.2	17.18	54.8	4.14	40	39.4	0.5	0.3
07tm319-3	2007	509699	5803944	North Spirit Lake	OGS	Rock	ICP-MS	0.6	2.52	1.5	0.07	1718	0.9	0.04	0.1
07tm334-3	2007	514169	5804879	North Spirit Lake	OGS	Rock	ICP-MS	5.9	15.04	318.8	0.61	332	63	0.25	0.1
07tm342-3	2007	512929	5804128	North Spirit Lake	OGS	Rock	ICP-MS	46.8	13.89	24.3	7.12	9	123.1	0.93	0.6
07tm343-3	2007	512945	5804039	North Spirit Lake	OGS	Rock	ICP-MS	19.4	7.48	5.7	2.97	6	40.1	0.52	0.2
07tm347-3	2007	510887	5806655	North Spirit Lake	OGS	Rock	ICP-MS	4.7	16.29	46.3	1.63	137	18.4	0.2	0.1
07tm347-3 SP	2007	510887	5806655	North Spirit Lake	OGS	Rock	ICP-MS	5.5	15.87	43.5	1.67	127	18.6	0.26	0.1
07tm351-3	2007	510820	5808267	North Spirit Lake	OGS	Rock	ICP-MS	43.2	18.35	23	3.48	22	83.4	0.55	0.3
07tm364-3	2007	513891	5810773	North Spirit Lake	OGS	Rock	ICP-MS	10.9	9.22	7.1	0.88	163	9	0.33	0.1
07tm370-3	2007	506448	5803005	North Spirit Lake	OGS	Rock	ICP-MS	18.6	11.94	42.5	2.66	457	81.9	0.5	0.2
07tm372-3	2007	506947	5802793	North Spirit Lake	OGS	Rock	ICP-MS	23.5	13.66	22.2	2.93	352	35.8	0.45	0.2
07tm374-3	2007	508590	5803200	North Spirit Lake	OGS	Rock	ICP-MS	26.4	16.62	23.3	2.42	72	41.1	0.46	0.2
07tm379-3	2007	515624	5807260	North Spirit Lake	OGS	Rock	ICP-MS	20.9	9.92	25.5	3.52	88	58.9	0.69	0.4
07tm380-3	2007	515050	5807381	North Spirit Lake	OGS	Rock	ICP-MS	5.9	3.41	6.7	1.25	70	24.3	3.1	0.1
07tm384-3	2007	515256	5808186	North Spirit Lake	OGS	Rock	ICP-MS	7.8	16.79	24.9	2.93	49	6.4	0.24	0.2
07tm388-3	2007	504295	5809120	North Spirit Lake	OGS	Rock	ICP-MS	14.1	19.54	47.9	20.28	1.5	185.9	1.67	5.7
07tm402-3	2007	509668	5809980	North Spirit Lake	OGS	Rock	ICP-MS	36.6	16.38	44	3.95	132	131.9	0.59	0.3
07tm430-2	2007	501970	5806825	North Spirit Lake	OGS	Rock	ICP-MS	24.4	20.83	26.1	8.53	52	18.1	0.55	0.6
07tm433-2	2007	501583	5806823	North Spirit Lake	OGS	Rock	ICP-MS	25.7	25.53	73.7	9.47	103	64.1	1.11	0.6