



Finding the energy metals the world needs for a low-carbon future

High-Impact Exploration in Emerging Copper and Nickel Provinces

Noosa Mining Conference

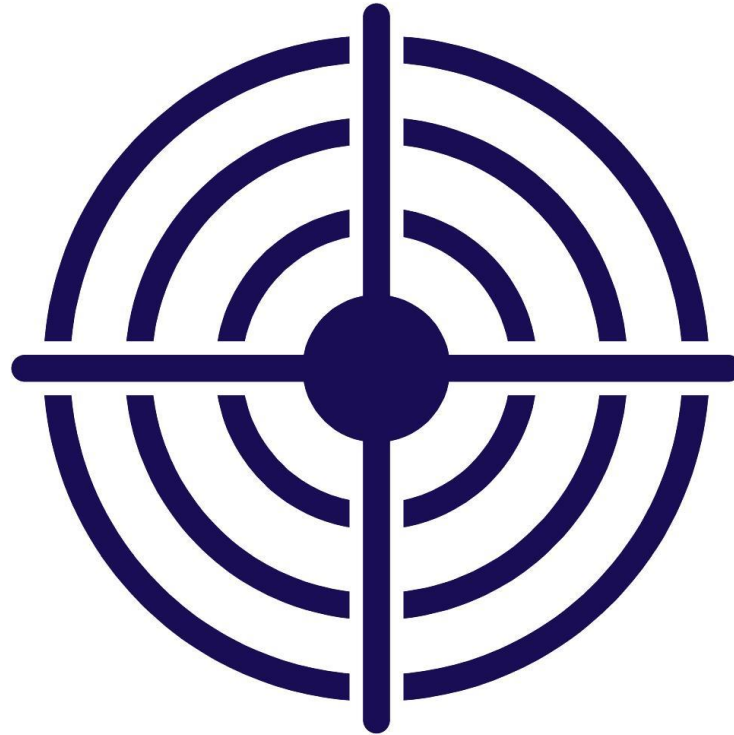
19 July 2023



- This presentation contains only an overview of Stavely Minerals Limited (“Stavely” or the “Company”) and its activities and operations. The contents of this presentation, including matters relating to the geology and exploration potential of the Company’s projects, may rely on various assumptions and subjective interpretations which it is not possible to detail in this presentation and which have not been subject to any independent verification.
- This presentation contains a number of forward-looking statements. Known and unknown risks and uncertainties, and factors outside of the Company’s control, may cause the actual results, performance and achievements of the Company to differ materially from those expressed or implied in this presentation.
- To the maximum extent permitted by law, Stavely does not warrant the accuracy, currency or completeness of the information in this presentation, nor the future performance of the Company, and will not be responsible for any loss or damage arising from the use of the information.
- The information contained in this presentation is not a substitute for detailed investigation or analysis of any particular issue. Current and potential investors should seek independent advice before making any investment decision in regard to the Company or its activities.



What does Stavely Minerals offer that is different?



BIG targets





Stavely Project - Thursday's Gossan Prospect

- High-Grade Cayley Lode Cu-Au-Ag discovery
 - **9.3Mt at 1.23% Cu, 0.23g/t Au and 7.1g/t Ag¹**
- Belief there is a large porphyry at depth eg.:
 - **Far Southeast - 892Mt at 0.5% Cu and 0.7g/t Au, ~20Moz Au**
 - **Resolution – 2Bt at 2.5% Cu**

Stavely Project - S41 Au-Ag Prospect

- Recent discovery of ~2km long breccia pipe
- Carbonate – base metal – gold system eg.:
 - **Kidston – 5Moz Au**
 - **Mt Leyshon – 5Moz Au**
 - **Kelian – 8.6Moz Au**

Hawkstone Magmatic Ni-Cu-Co Project²

- Adjacent to IGO / Buxton Merlin discovery – ave. 8% Ni tenor
 - **Eg. Nova & Bollinger - 14.3Mt at 2.3% Ni, 0.9% Cu and 0.08% Co**



¹ See ASX announcement 14 June 2022, Appendix 1
² see ASX announcement 23 May 2023



Stavely Project

Stavely Project



- **First-mover position** – largest and most strategic tenement holding in the Stavely Volcanic Belt, western Victoria
- **Discovery**– outstanding shallow high-grade copper-gold-silver discovery (September 2019), the Cayley Lode
- **Cayley Lode MRE¹** – 9.3Mt at 1.23% Cu, 0.23g/t Au and 7.1g/t Ag
- **Total Resources** – 28.3Mt at 0.75% Cu, 0.11g/t Au and 3.5g/t Ag
- **Containing** – 210,000t Cu, 100,000oz Au, 3.2Moz Ag and 2.4kt Zn
- **New style of mineralisation** – Magma/Butte copper lode-style system, never before seen in Australia
- **New vectors to the porphyry at depth** – drilling to re-commence in August - subject to ground conditions
- **Multiple regional discovery opportunities** – recently discovered S41 breccia-hosted Au-Ag system, Junction 1 prospect, Toora Road

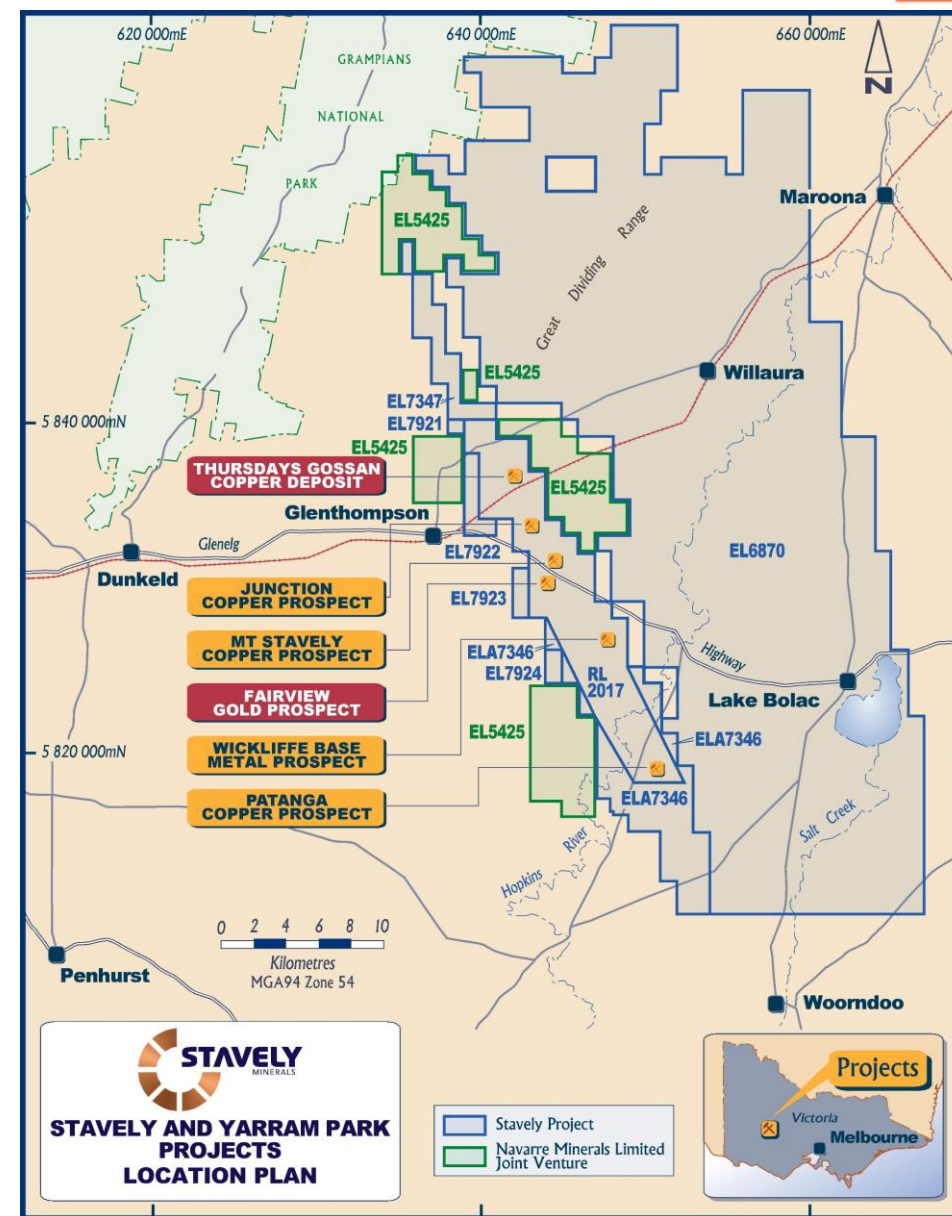


¹ reported in compliance with the JORC Code 2012, see ASX announcement 14 June 2022, see Appendix 1 for classifications

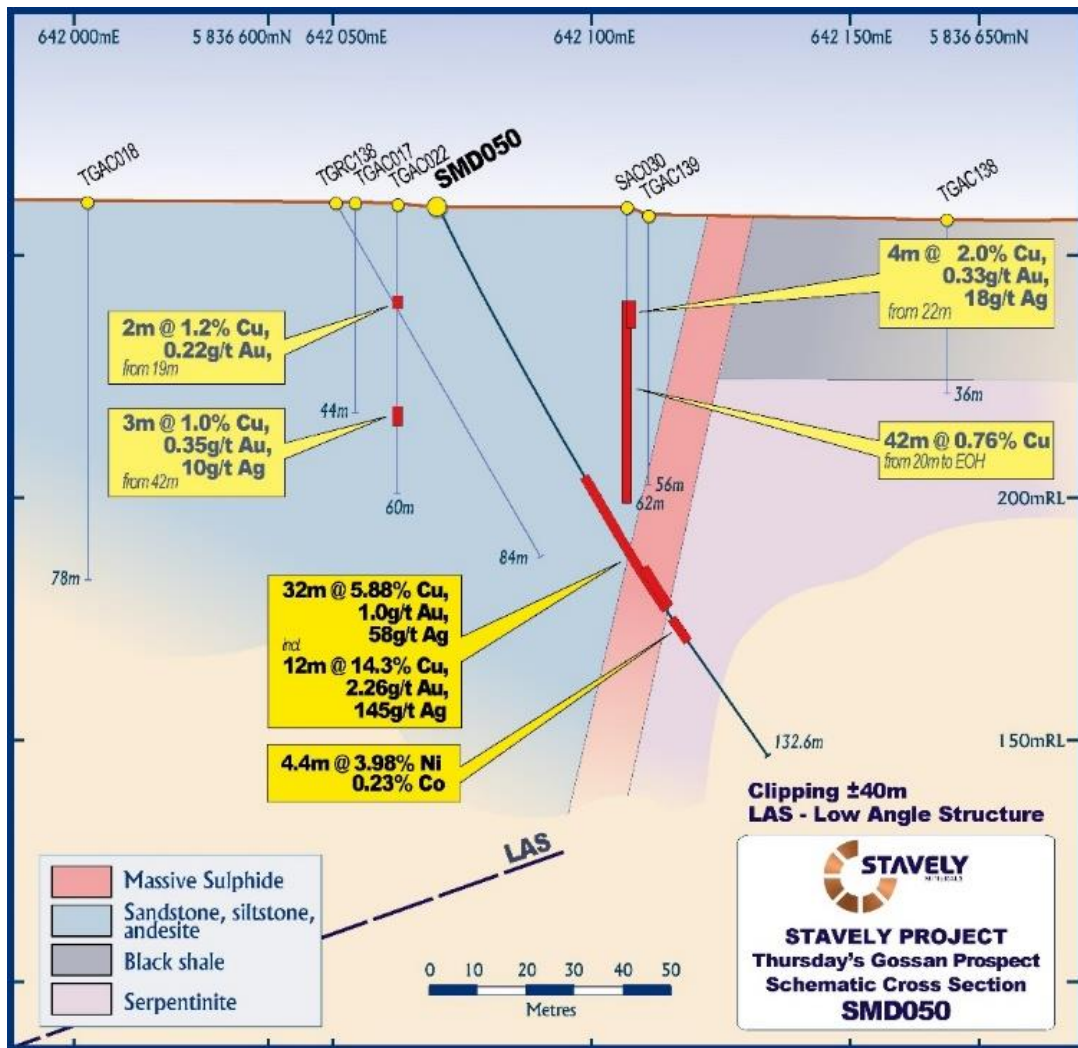
First-Mover Position in Victoria's Stavelly Arc



- Two cornerstone assets – 100%-owned **Stavelly** and **Ararat** Projects
- **1,461km² ground position** in Australia's new exploration hot-spot of western Victoria (Kirkland Lake – Fosterville)
- Majority of exploration since 2014 focused on Thursday's Gossan, targeting a **Tier-1, Cadia-style copper-gold** porphyry system



Discovery Breakthrough – The Cayley Lode



SMD050

- **32m at 5.88% copper, 1.00g/t gold and 58g/t silver**, from 62m drill depth, including:
 - 12m at 14.3% copper, 2.26g/t gold and 145g/t silver from 82m, including:
 - 2m at 40% copper, 3.00g/t gold and 517g/t silver
- Surprisingly, SMD050 also intersected:
 - 4.4m at 3.98% nickel, 0.23% cobalt and >1% chrome

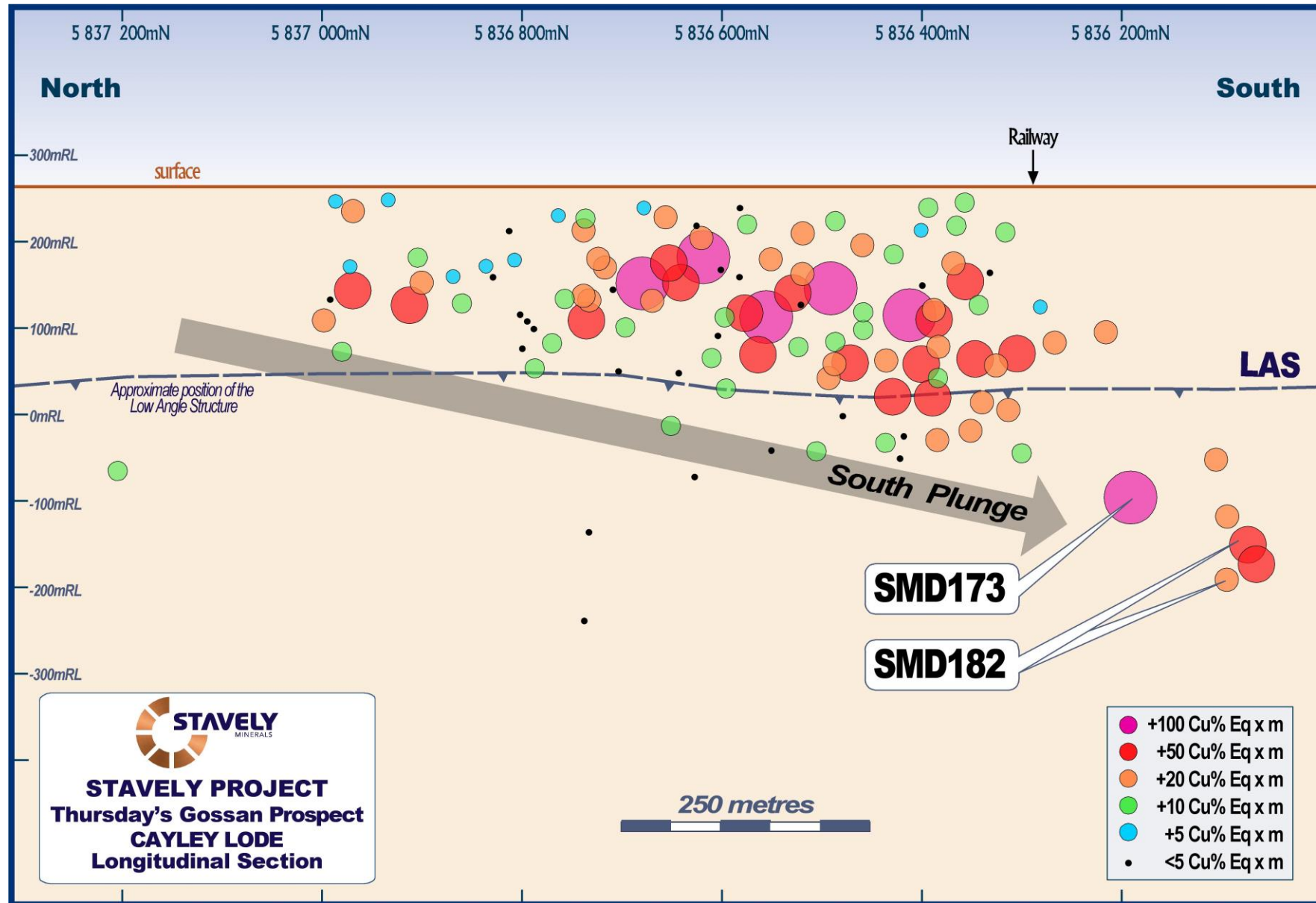


See ASX announcement 26/09/2019 and available from www.stavely.com.au



Cayley Lode Mineral Resources

Cayley Lode Discovery – Resource Drilling Long Section

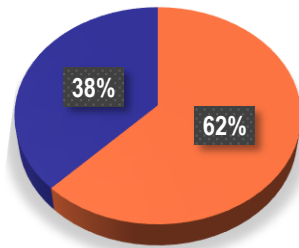


Cayley Lode Mineral Resource Estimate



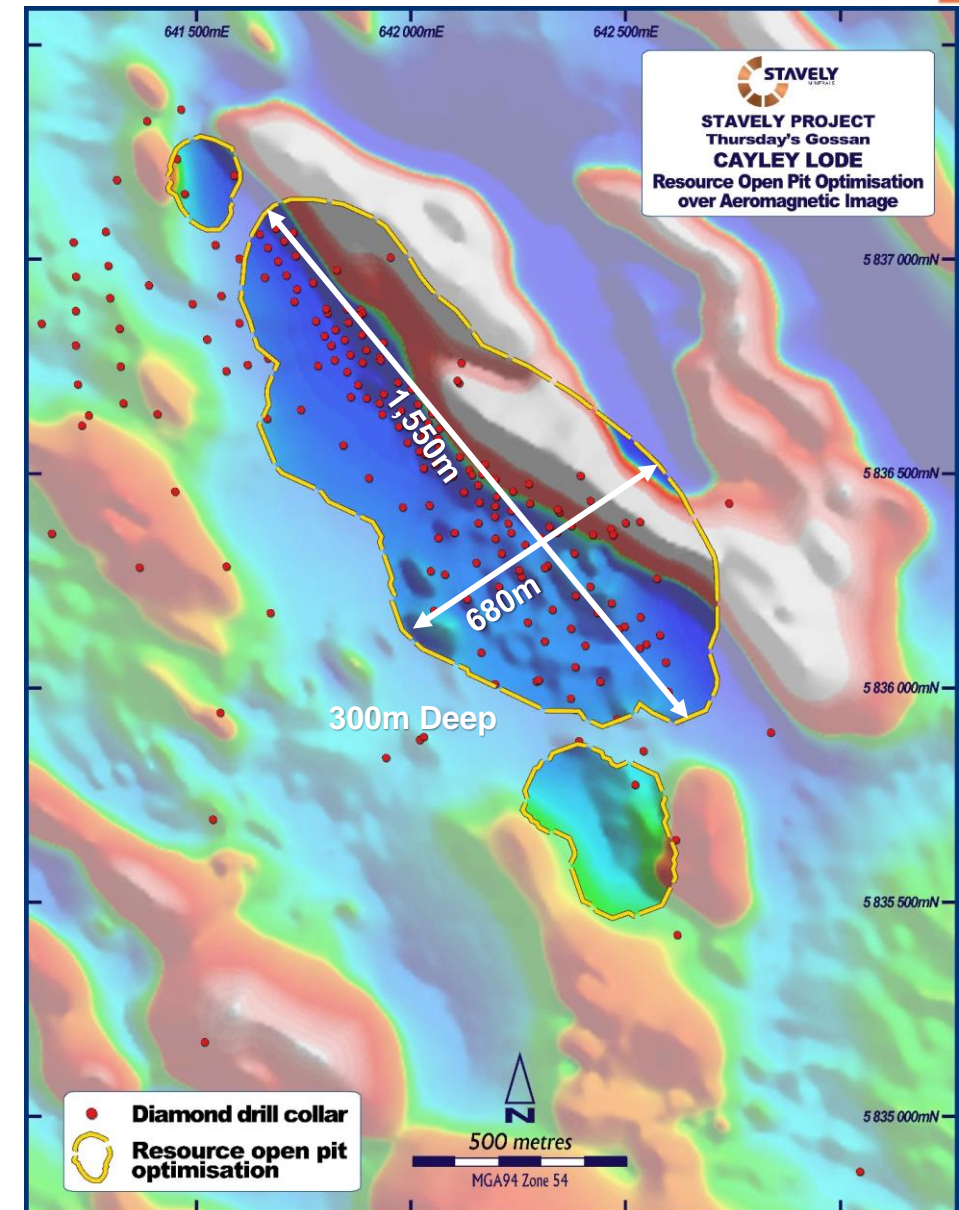
- Magma / Butte copper lode-style system – outstanding exploration target never before seen in Australia
- **9.3Mt at 1.23% Cu, 0.23g/t Au and 7.1g/t Ag¹**

■ Indicated ■ Inferred



- Open Pit Mineral Resources within open pit shell optimised at US\$6/lb
 - *1,550m long, 680m wide and 300m deep*
- Mineralisation remains open down-plunge and down-dip

¹ reported in compliance with the JORC Code 2012, see ASX announcement 14 June 2022





Underground Potential

Cayley Lode Discovery – Amenable to Open Pit and UG

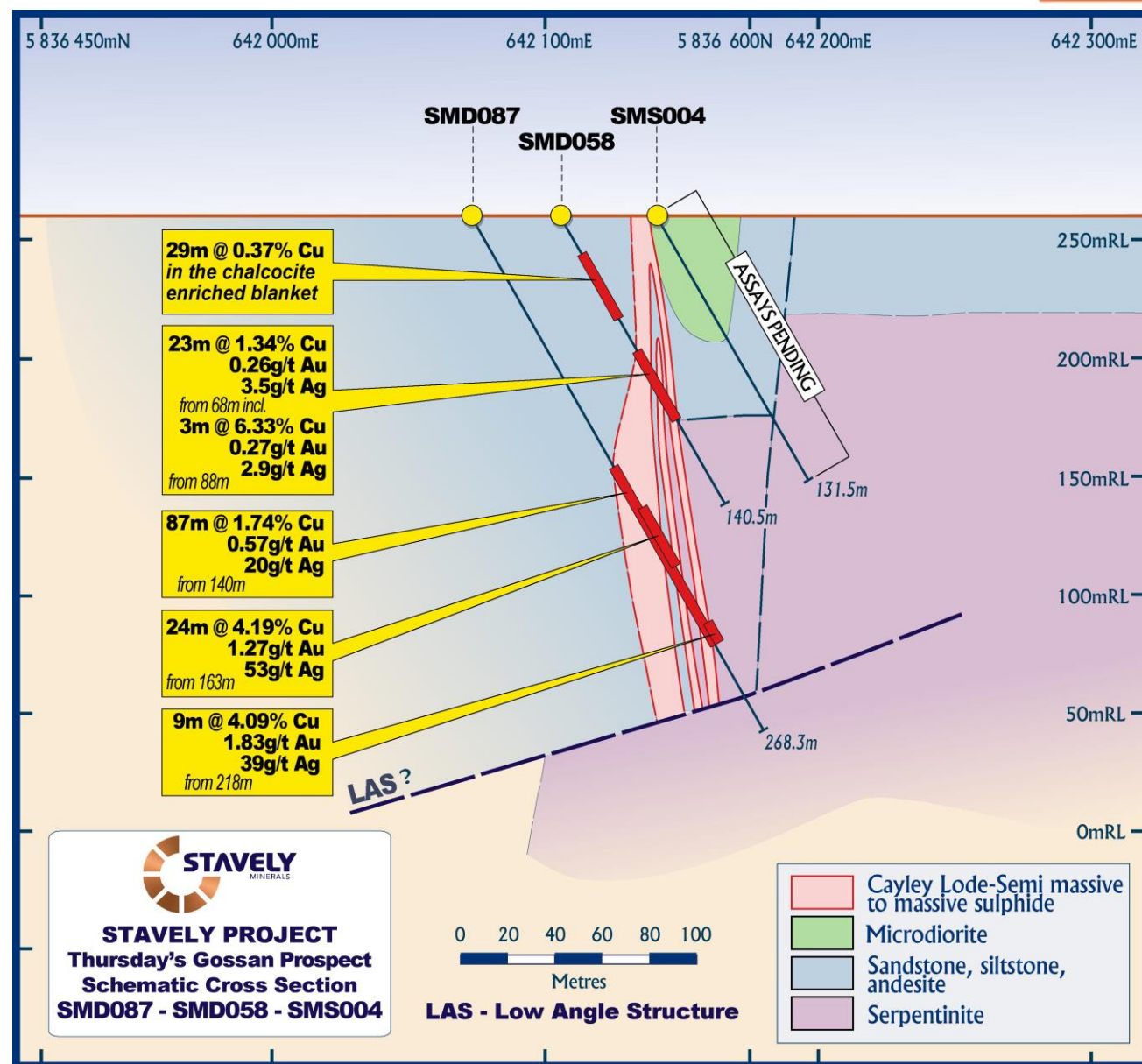


SMD087

- 87m @ 1.74% Cu, 0.57g/t Au and 20g/t Ag, *incl.*
- 24m @ 4.19% Cu, 1.27g/t Au and 53g/t Ag, *and*
- 9m @ 4.09% Cu, 1.83g/t Au and 39g/t Ag

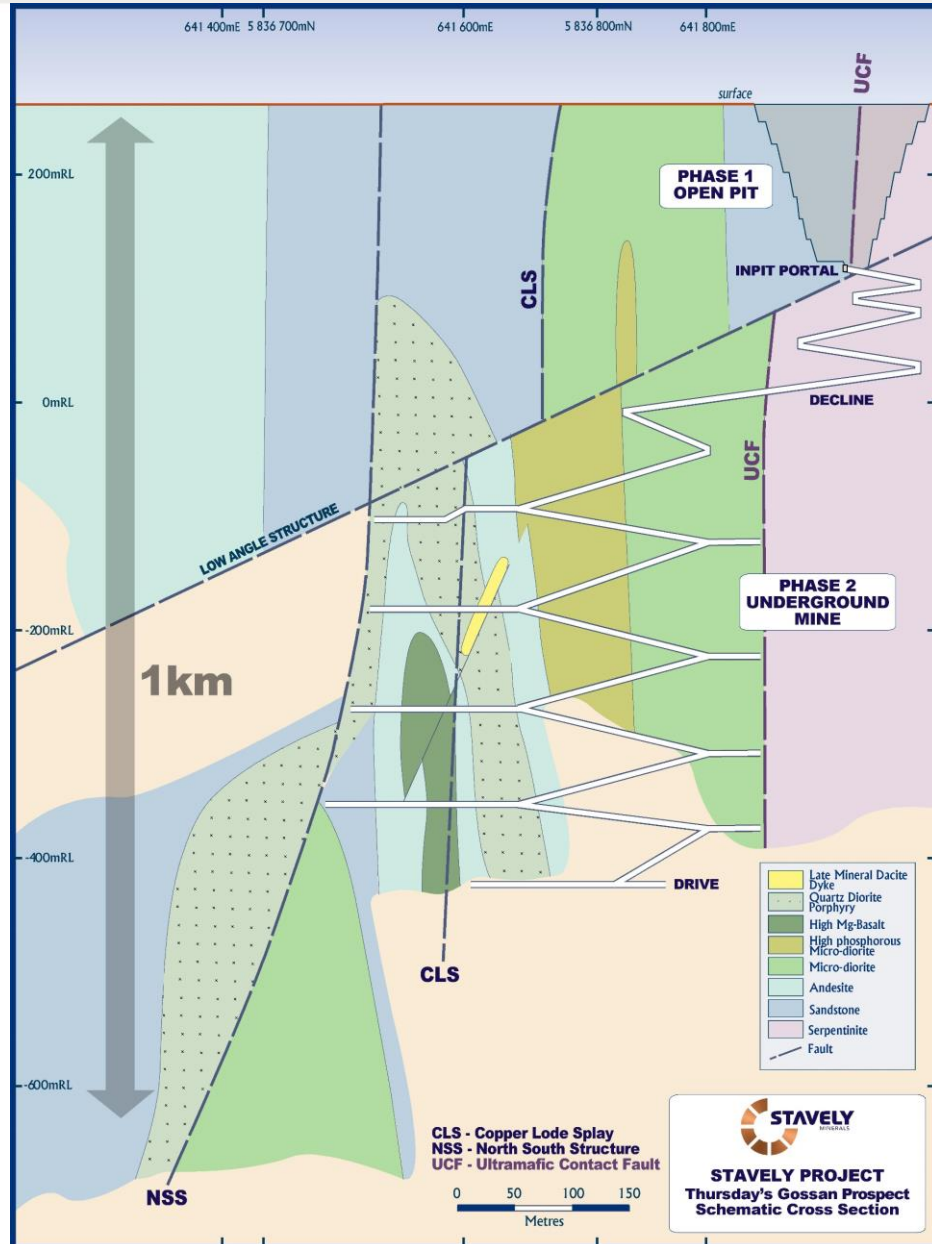
Typical of most Cayley Lode intercepts:

- a large intercept amenable to open pit bulk mining, and
- multiple discrete higher-grade intervals providing a 'sweet spot' of focus for underground mining



See ASX announcement 15/06/2020 and 14/07/2020 and available from www.stavely.com.au

Current Programs – How do we see this as a possible development?



Option 1

A Phase-1 open pit based on high-grade structurally-controlled mineralisation drives an open pit that also captures 18Mt at 0.4% copper in the chalcocite-enriched blanket.

Followed by a Phase-2 underground is developed from the base of the Phase-1 open pit and spirals between mineralised lodes on either side of the decline

Option 2 (most likely)

Go straight to underground

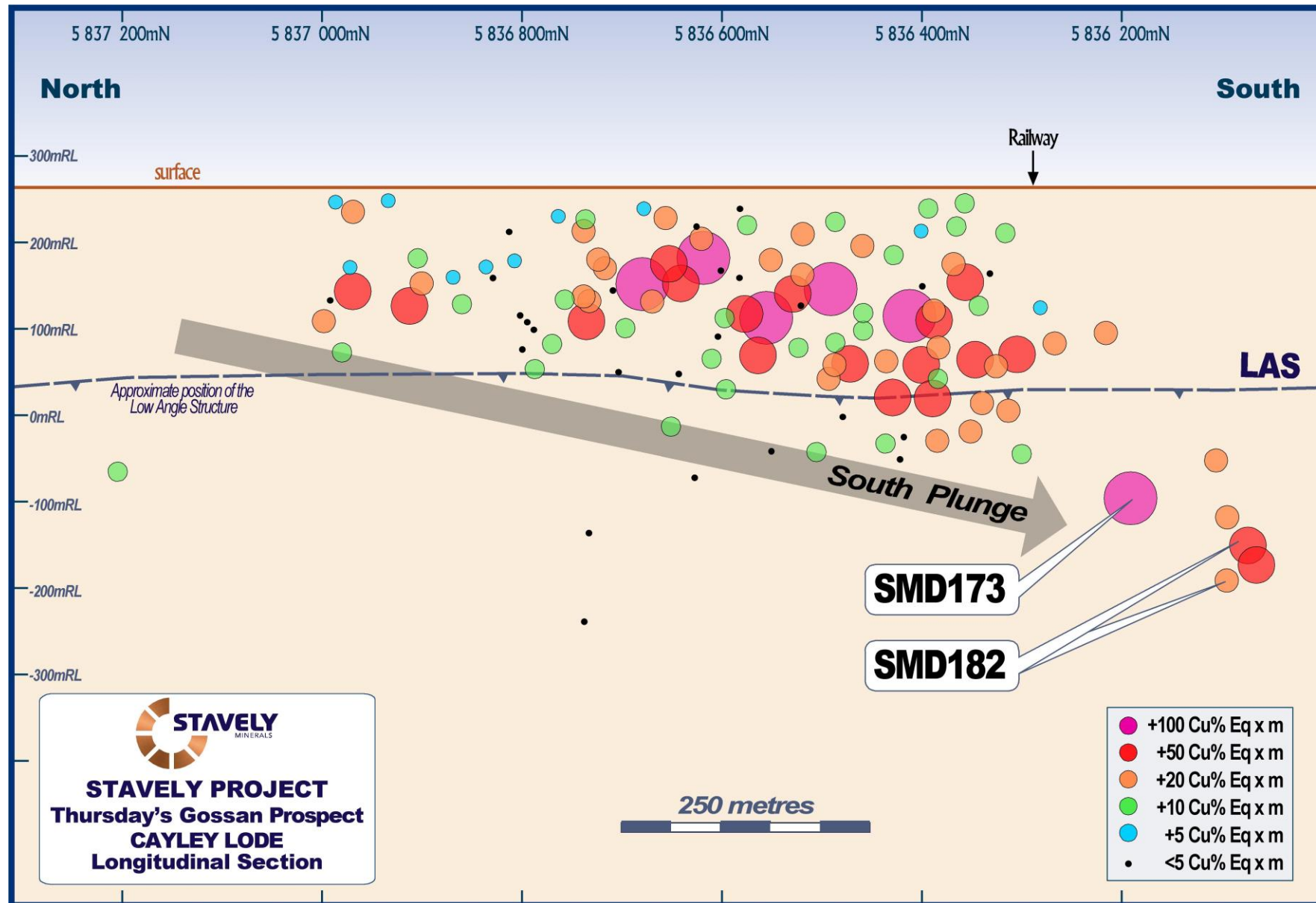
If continuity of mineralisation is confirmed to depths in excess of 1km – and we have intercepted mineralisation at ~1,150m drill depth in SMD045W2* – then at a vertical rate of mining advance of 50m-60m per year, we can envisage a multi-decade underground mine life

*See ASX announcement 18 June 2019 and available from www.stavelly.com.au

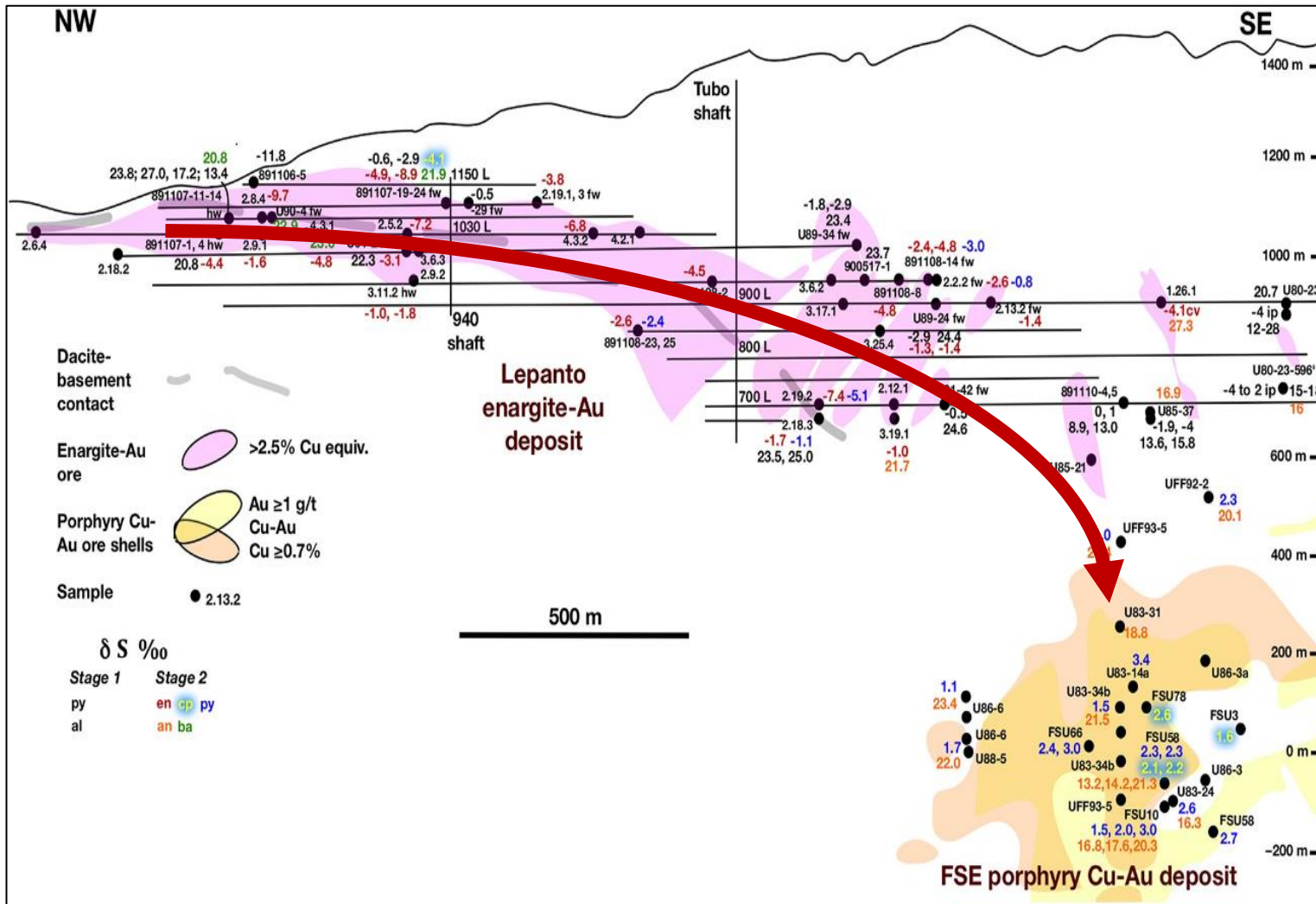


Deep Porphyry Target

Cayley Lode Discovery – Resource Drilling Long Section



Lepanto HS and Far Southeast Porphyry, Luzon, Philippines



Lepanto high-sulphidation Cu-Au deposit is genetically related to the Far Southeast porphyry Cu-Au deposit.

We believe the Cayley Lode has a similar porphyry relationship.

Mineral Resources*

892Mt at 0.5% Cu and 0.7g/t Au

Containing

19.8Moz gold and 9,921Mlb copper

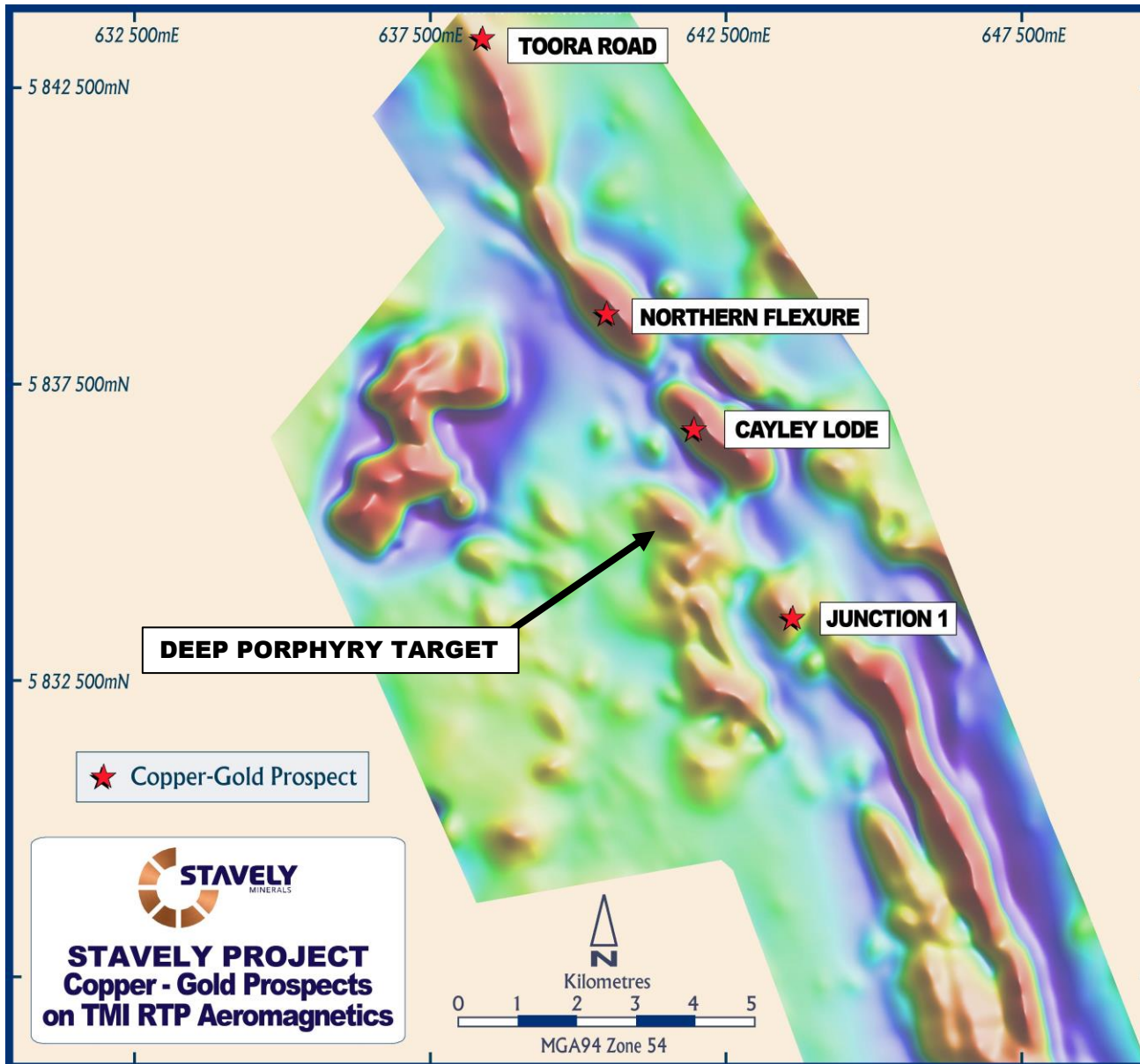
* Source: Goldfields 2018 Annual Report available from www.goldfields.com

The spatial relationship between the Lepanto high-sulphidation copper-gold deposit and the Far Southeast porphyry located in northern Luzon, Philippines. From Hedenquist et al, 2017, Resource Geology.

See ASX announcement 29/11/2022 and available from www.stavely.com.au

*Note: Investors are cautioned that Stavely Minerals is not implying any size or grade for a potential porphyry at Thursday's Gossan, simply that there is precedent for the structurally-controlled copper-gold mineralisation at the Cayley Lode to be associated with a porphyry system at depth

Deep Porphyry Target



The Cayley Lode is interpreted to be formed above a causative porphyry.

Diamond drilling of the deep porphyry target is to re-commence in August – subject to ground conditions.

The Stavely Arc is host to the Cayley Lode Cu-Au-Ag discovery and several other regional prospects:

- Toora Road
- The Northern Flexure
- Junction 1



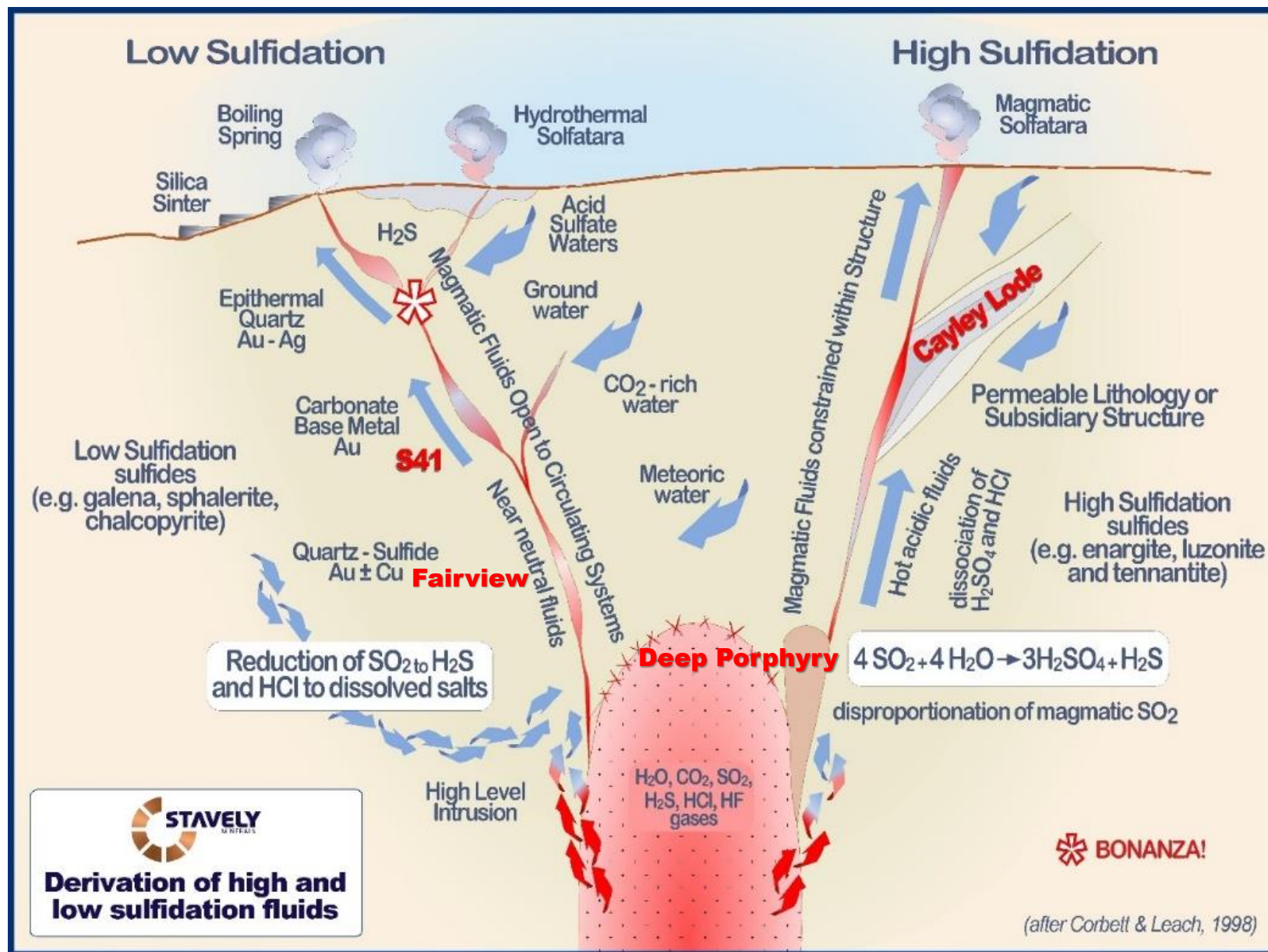
Stavely Regional Exploration

Regional Exploration – Massive Opportunity for Discovery



- Full range of discovery opportunities associated with an ancient volcanic arc

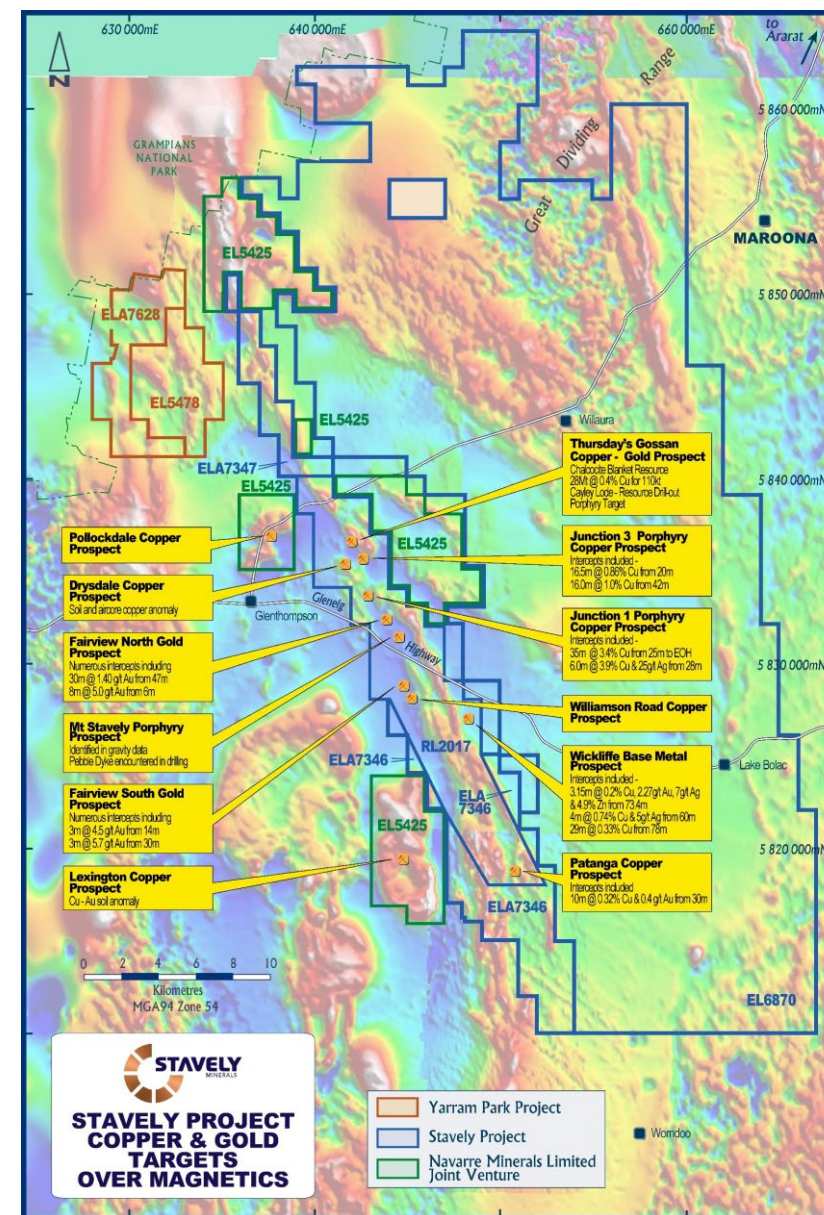
5-7km



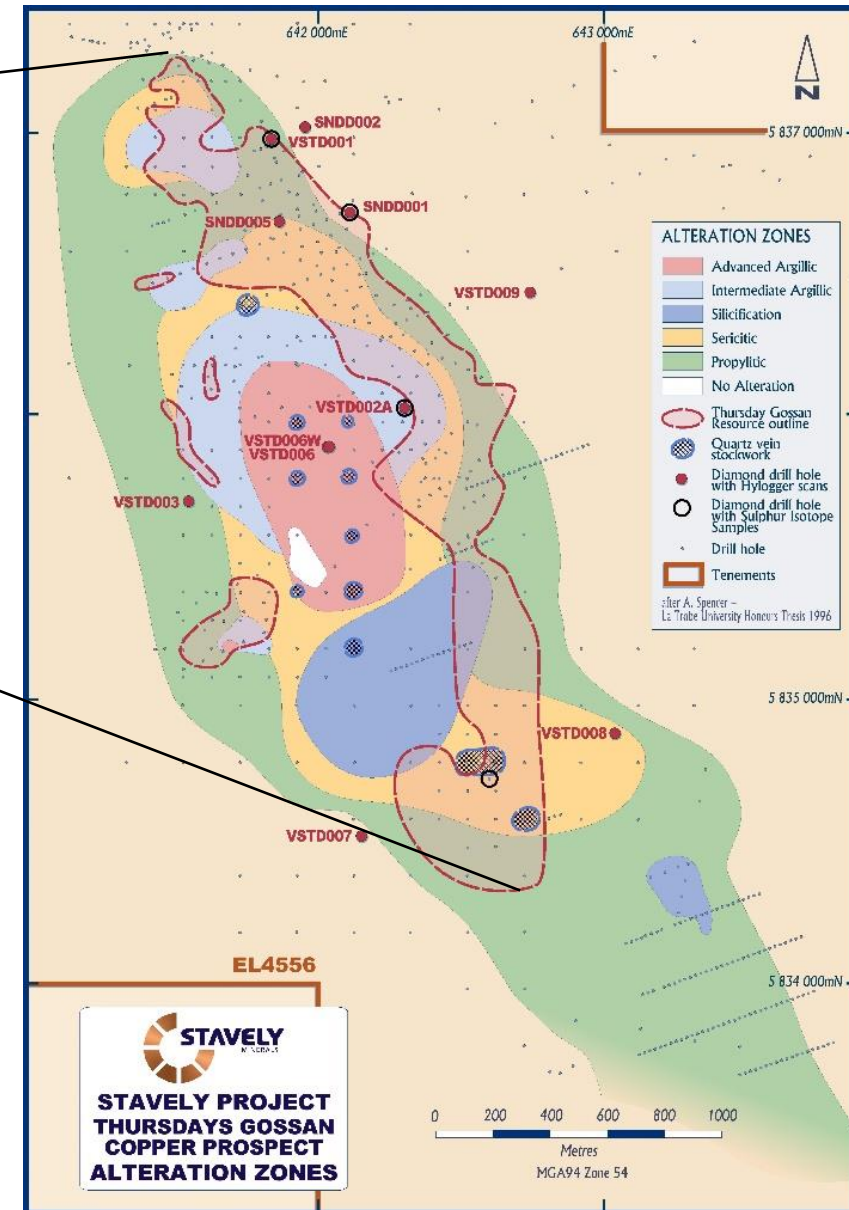
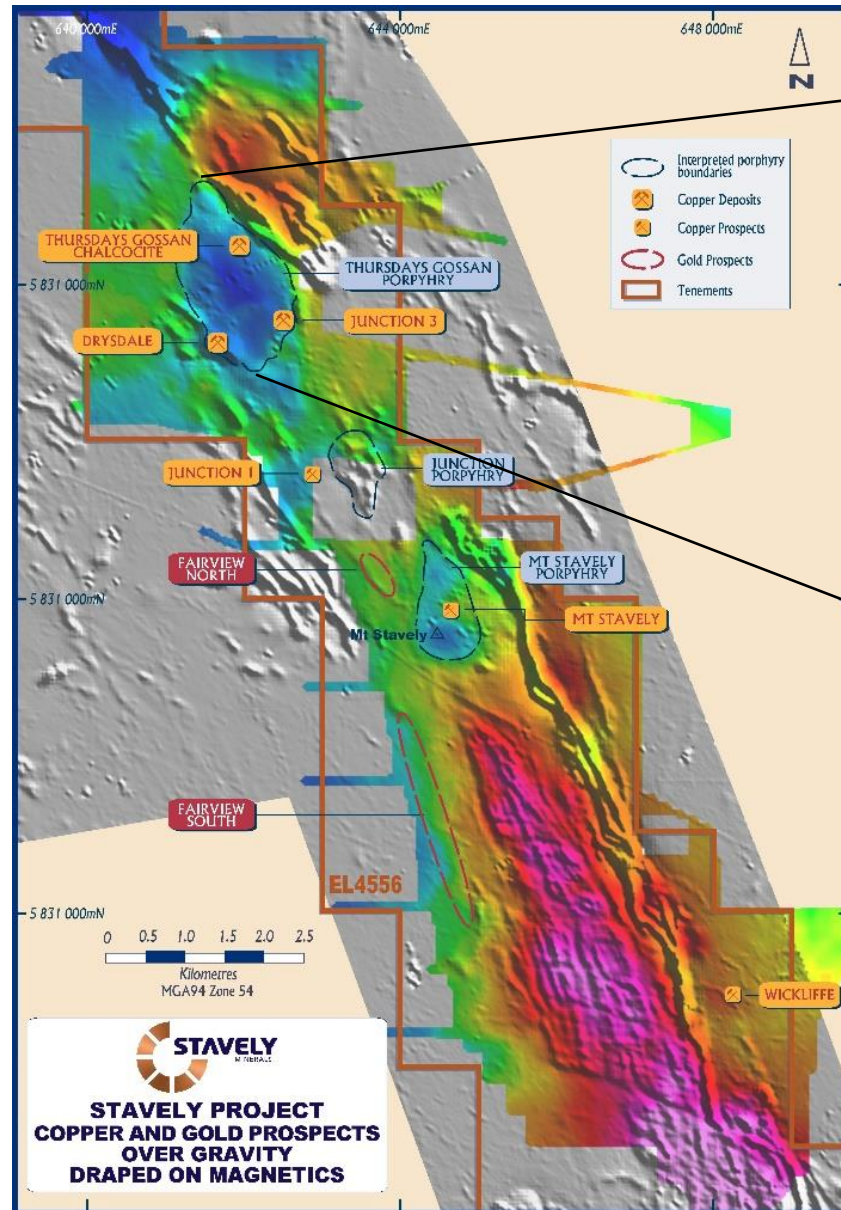
Regional Exploration – Massive Opportunity for Discovery

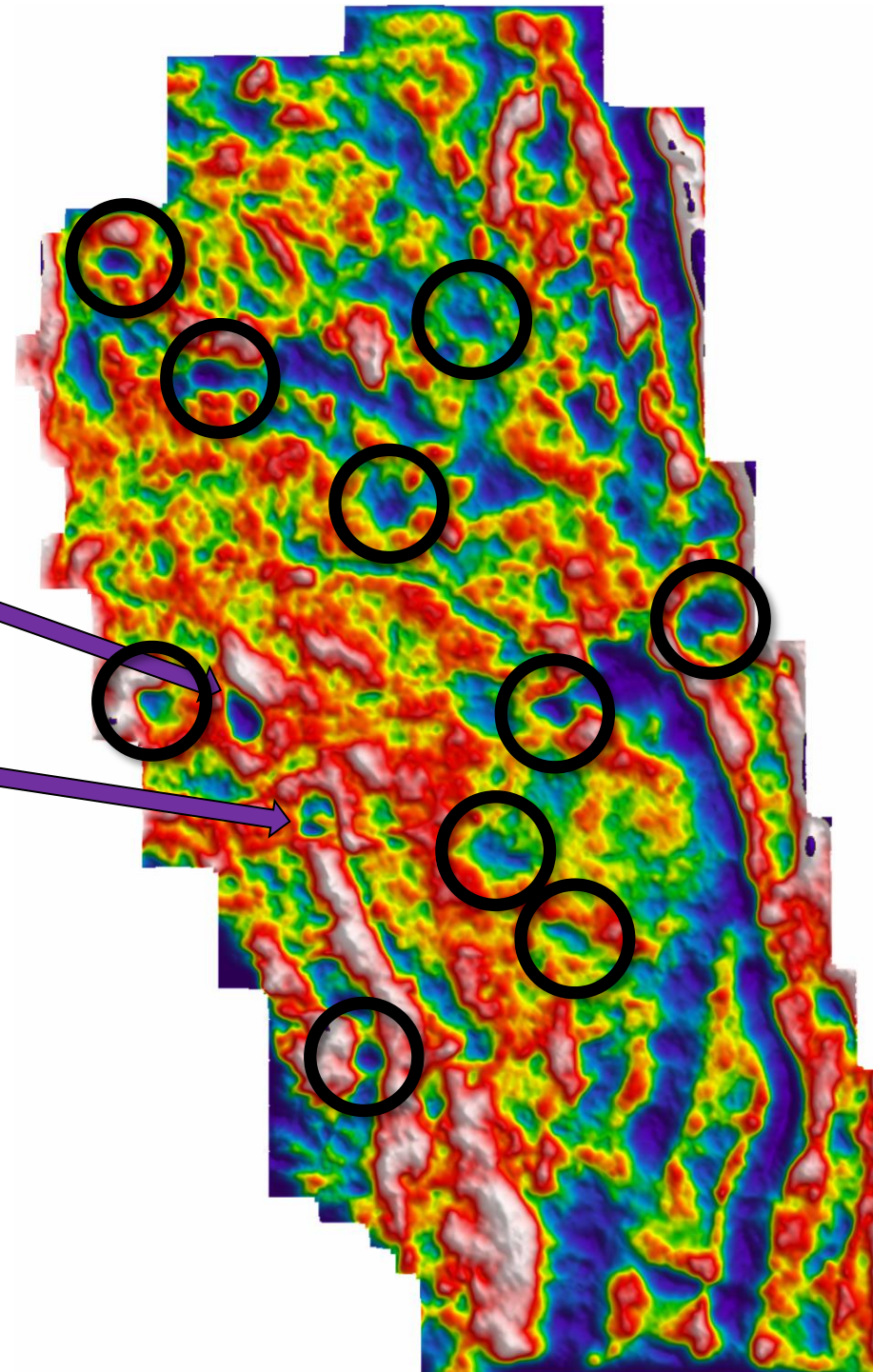
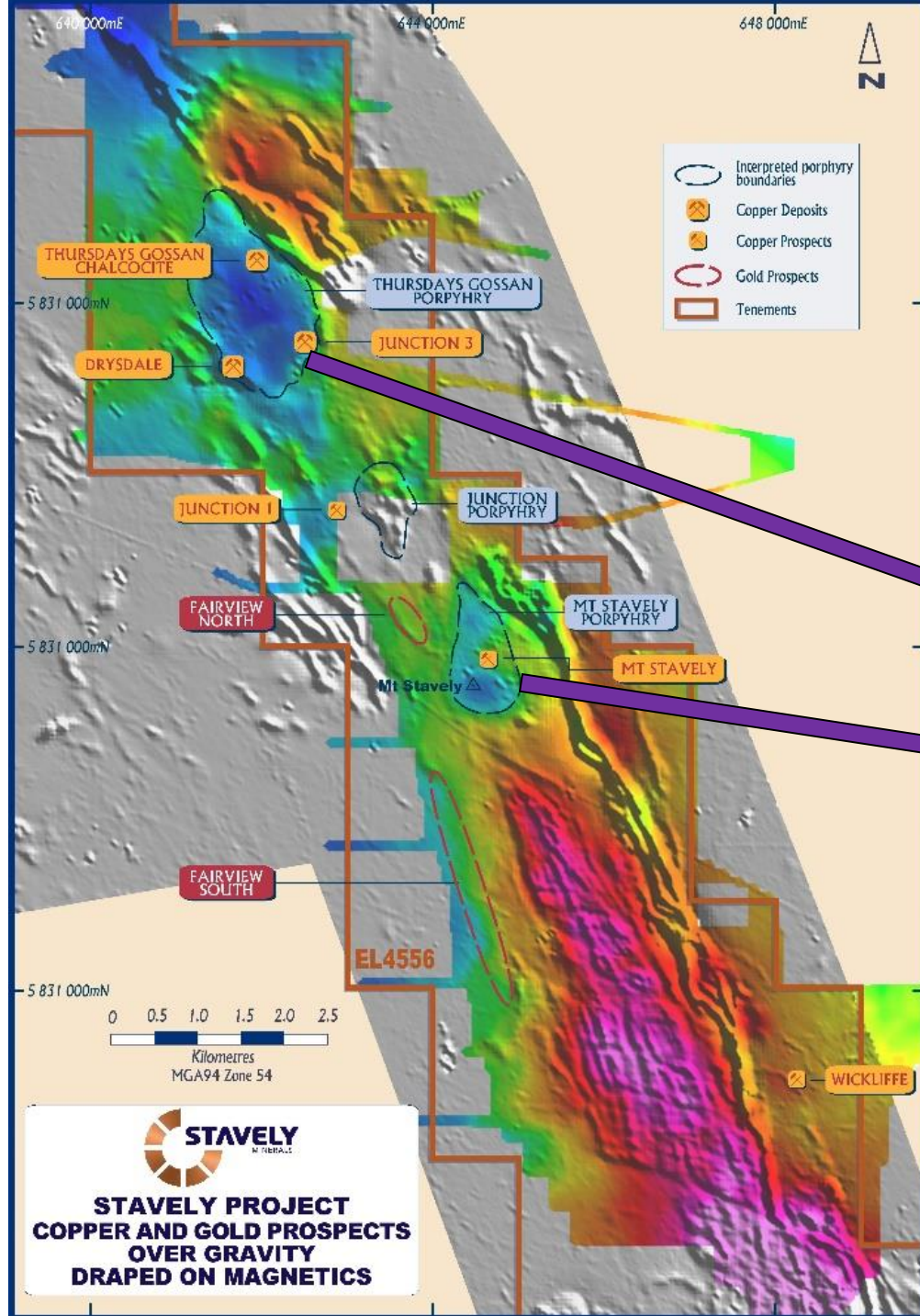


- Despite previous exploration by industry ‘top dogs’ Newcrest, Rio Tinto, CRA Exploration and North Limited, Stavely Minerals has a ‘first mover’ advantage
- Almost 1,500km² of tenure covering ~115km of porphyry-prospective volcanic arc segments
- Known prospects occur largely within a ~20km window of sub-crop – this is what the majors focused on
- The other ~95km strike of prospective arc rocks are covered by younger cover or younger basalt – this is Stavely’s first mover advantage



Ground Gravity – Thursday's Gossan Alteration / Gravity Low





Falcon™
gravity
gradiometer
image

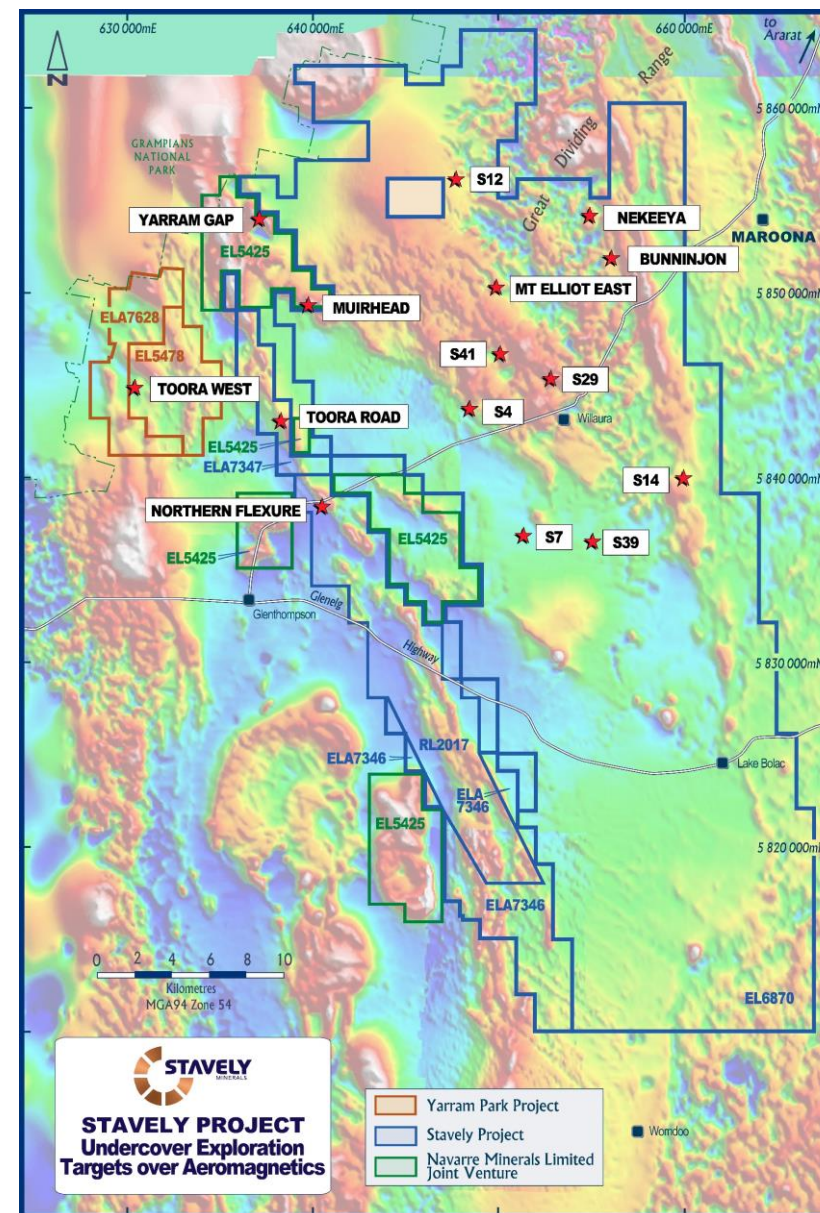
Regional Exploration – Massive Opportunity for Discovery



- The team has identified 19 regional targets and have active aircore and soil auger programmes
- All of the regional targets are under younger (~10Ma) basalt cover or tertiary transported cover
- Already made a 'blind' porphyry discovery under 30m of transported cover at Toora West
- Targeting method works – proprietary Falcon[®] gravity gradiometer data opens new exploration 'search space'
- New emerging discovery at the S41 prospect



Massive quartz vein with chalcopyrite and molybdenite at Toora West prospect - STWD005 at 287m – 0.6m @ 8.72g/t Au, 1.85% Cu, 5.2g/t Ag & 151ppm Mo



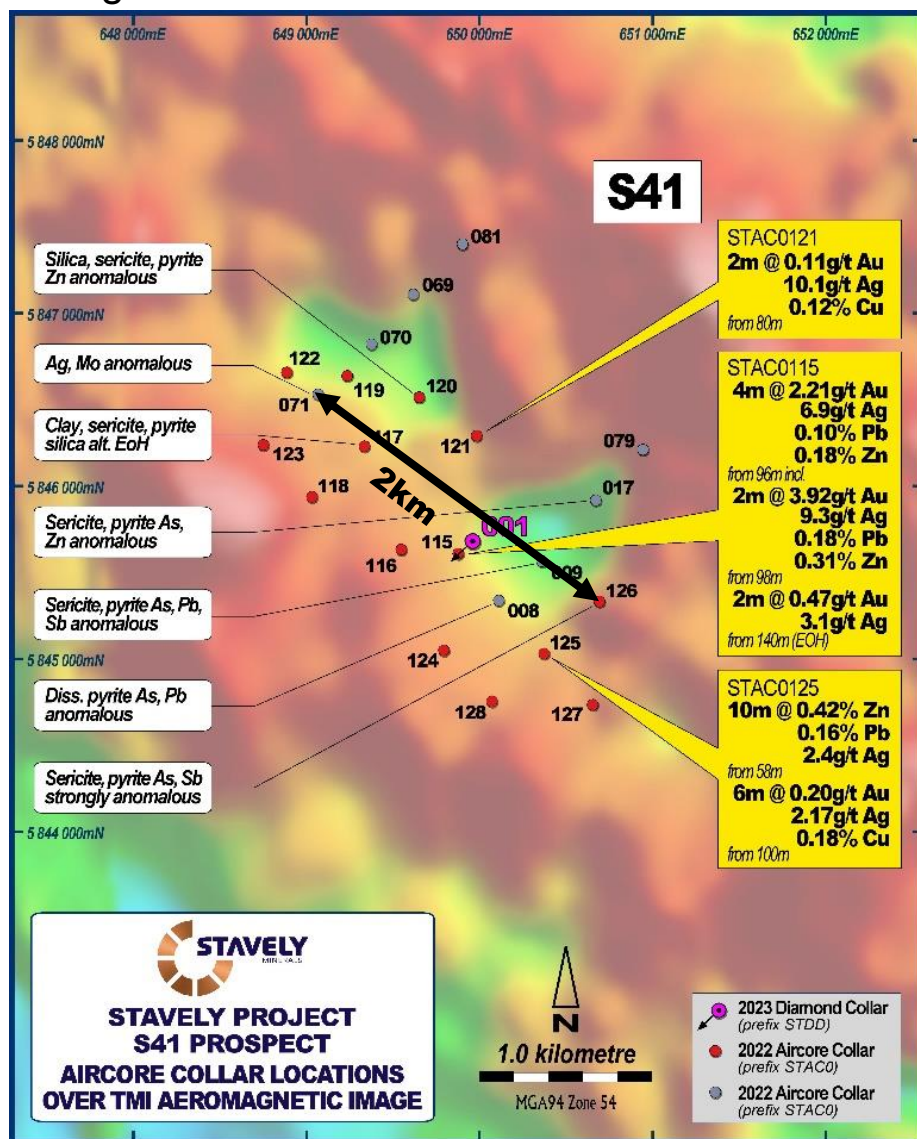
See ASX announcement 14/10/2021 and available from www.stavely.com.au

STAVELY MINERALS - FINDING THE COPPER THE WORLD NEEDS FOR A LOW-CARBON FUTURE

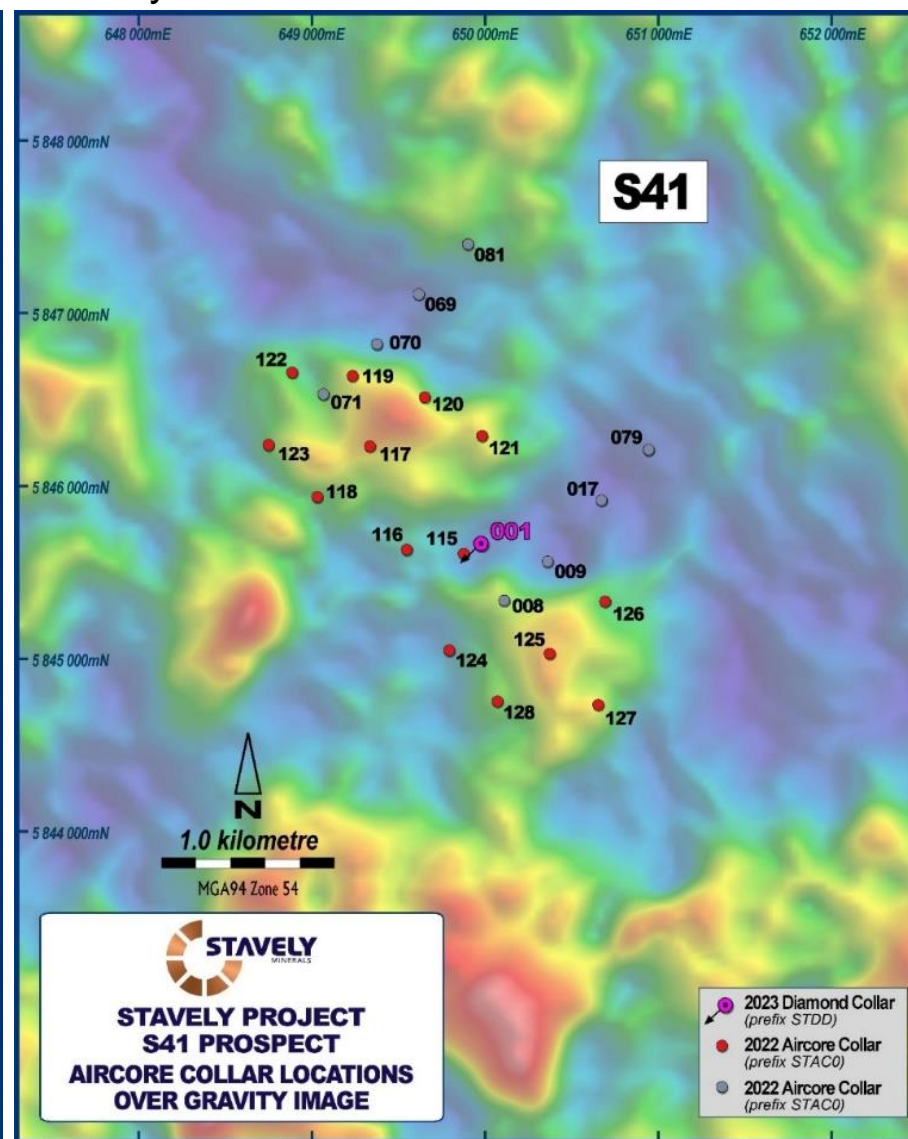
Emerging Discovery? – The S41 Prospect



Magnetics



Gravity

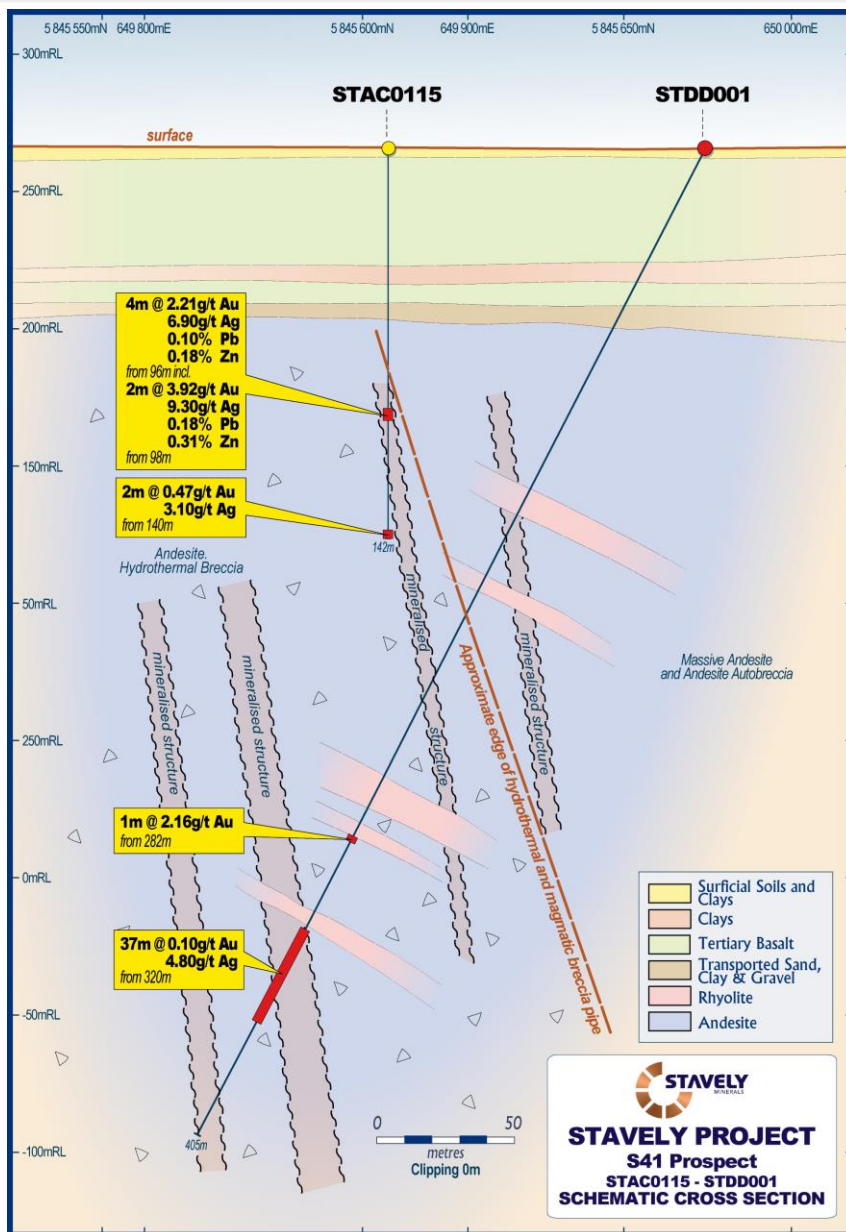


S41 Prospect Aircore

- 4m at 2.21g/t gold from 96m drill depth, including:
- 2m at 3.92g/t gold from 98m in aircore drilling
- Large 2km alteration zone
- Strongly anomalous base metals and pathfinder geochemistry

See ASX announcement 19/04/2023 and available from www.stavely.com.au

Emerging Discovery? – The S41 Prospect

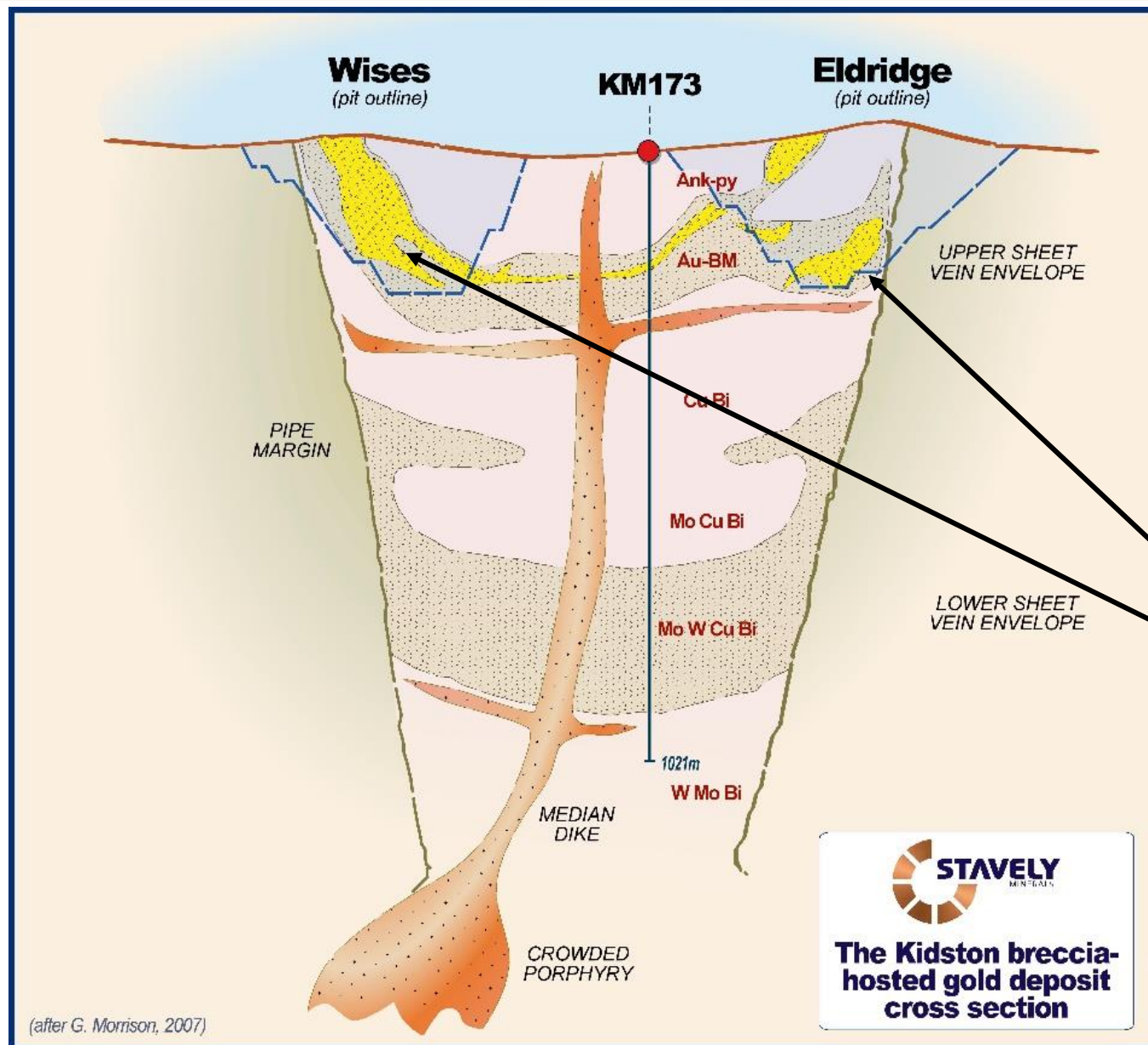


S41 Diamond Drill Hole

- 1m at 2.16g/t Au from 282m drill depth
- 37m at 0.10g/t Au, including:
 - 2m at 0.56g/t Au from 320m, and
 - 5m at 24.3g/t Ag from 353m
- Gold and silver in the system
- Breccia-hosted systems host notoriously inconsistent gold mineralization eg. Kidston
- Big systems

See ASX announcement 26/04/2023 and available from www.stavelly.com.au

Emerging Discovery? – The S41 Prospect



S41 Diamond Drill Hole

- **1m at 2.16g/t Au** from 282m drill depth
- **37m at 0.10g/t Au**, including:
 - **2m at 0.56g/t Au** from 320m, and
 - **5m at 24.3g/t Ag** from 353m
- Gold and silver in the system
- Breccia-hosted systems host notoriously inconsistent gold mineralization eg. Kidston
- Big systems

See ASX announcement 26/04/2023 and available from www.stavelly.com.au

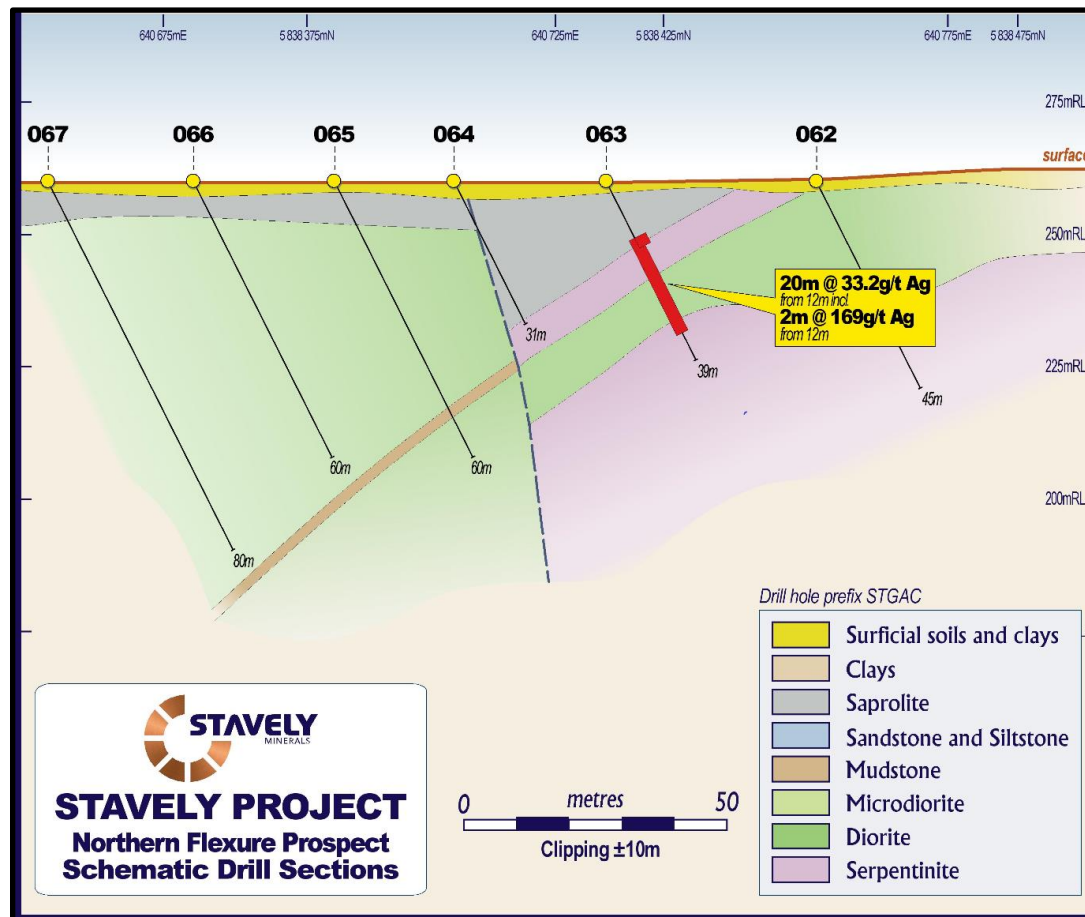
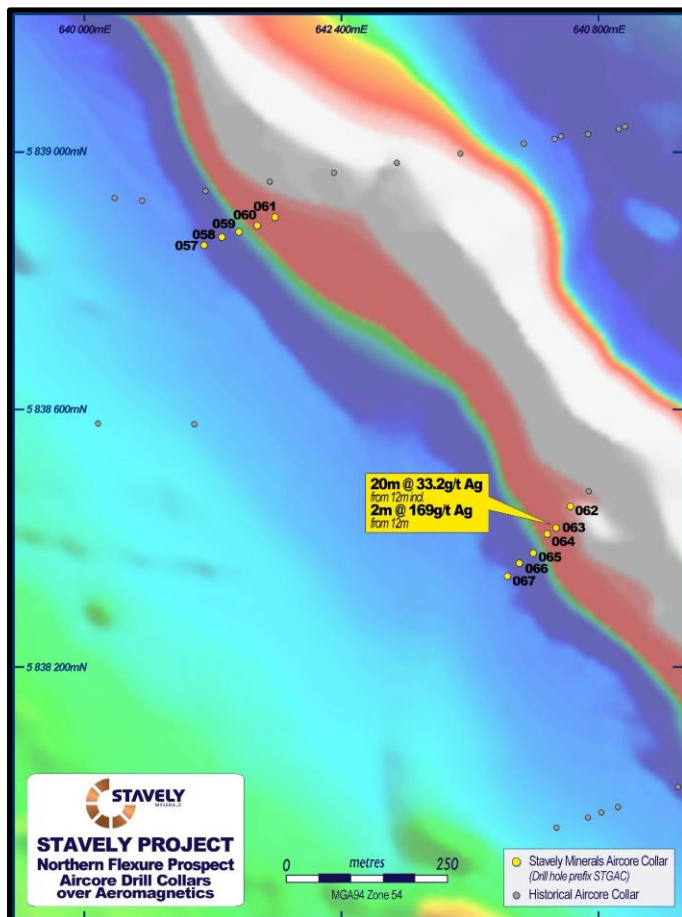
Emerging Discovery? – The Northern Flexure Prospect



Northern Flexure Prospect

- First drill programme
- **20m at 33.2g/t silver** from 12m drill depth, including:
 - **2m at 169g/t silver** from 98m
- Similar ultramafic contact setting to the Cayley Lode

See ASX announcement 19/04/2023 and available from www.stavely.com.au

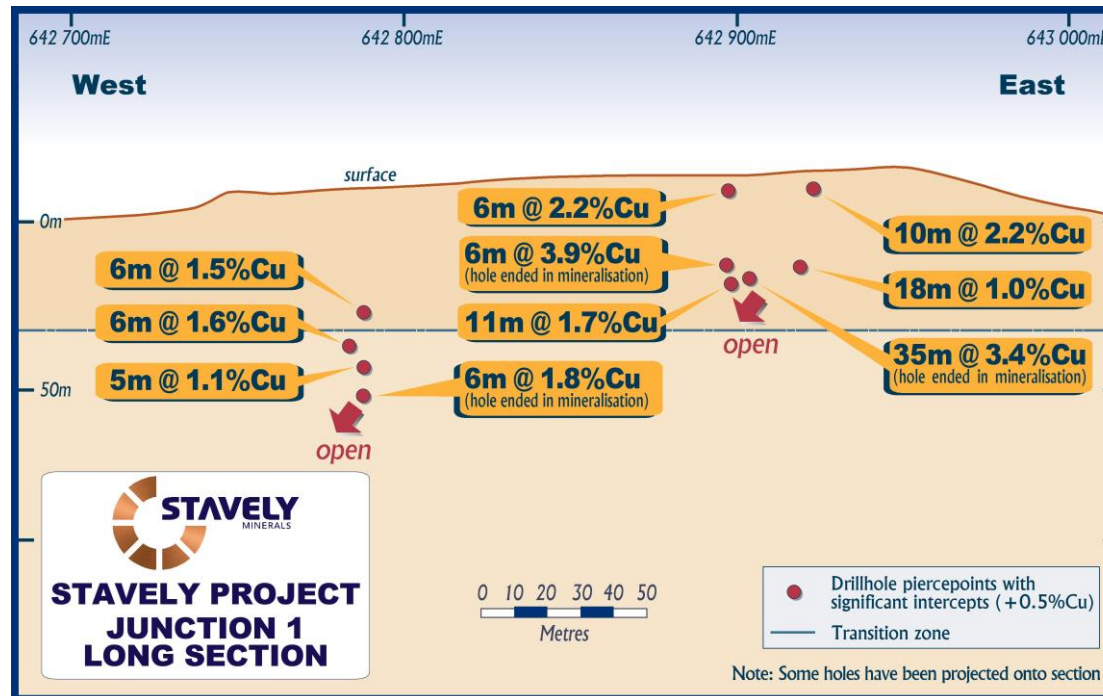




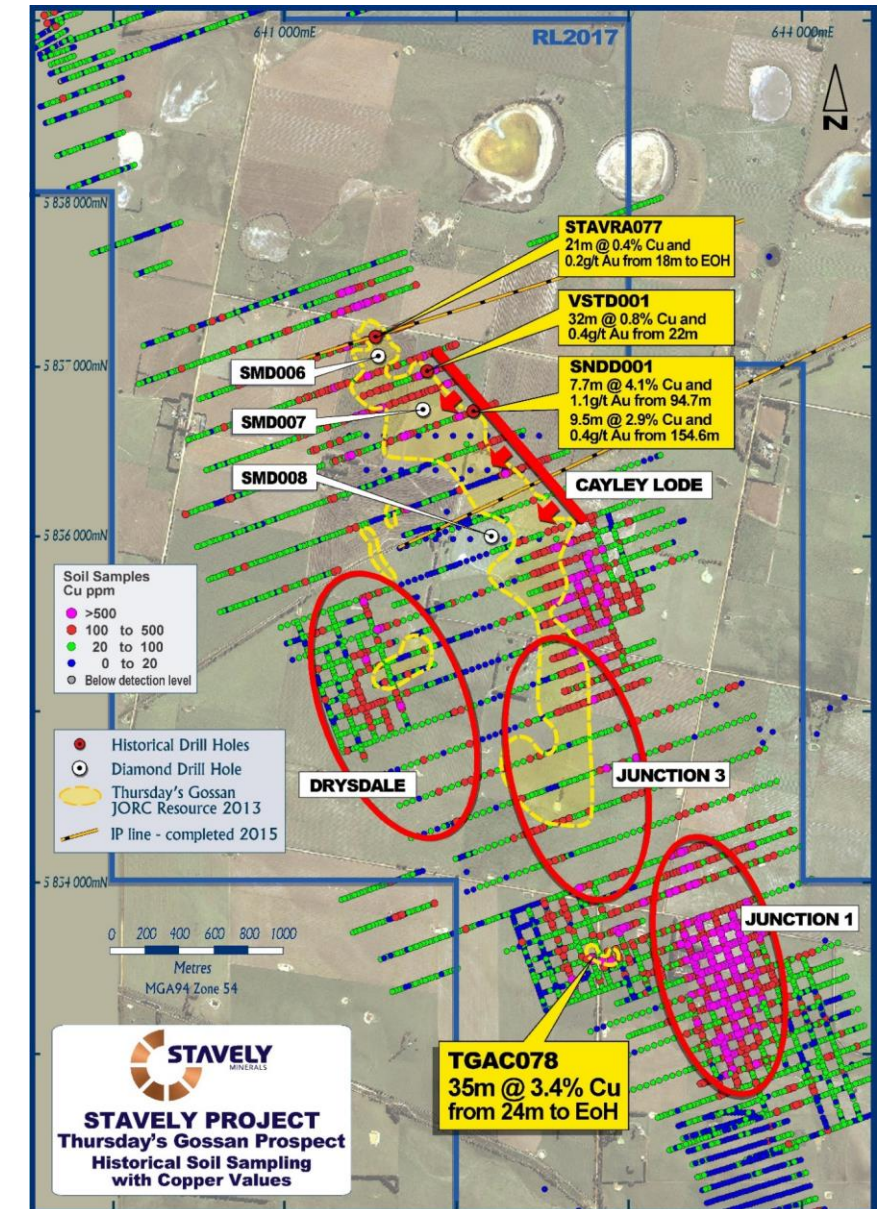
Junction 1 – Massive Opportunity for Additional Discovery

Junction 1 Prospect

- 2km south of the Cayley Lode
- Largest and highest grade soil anomaly in the project
- Restricted access over the past 15 years
- Aircore drill results including **35m at 3.4% Cu** from 24m



See Stavely Minerals Prospectus and available from www.stavely.com.au



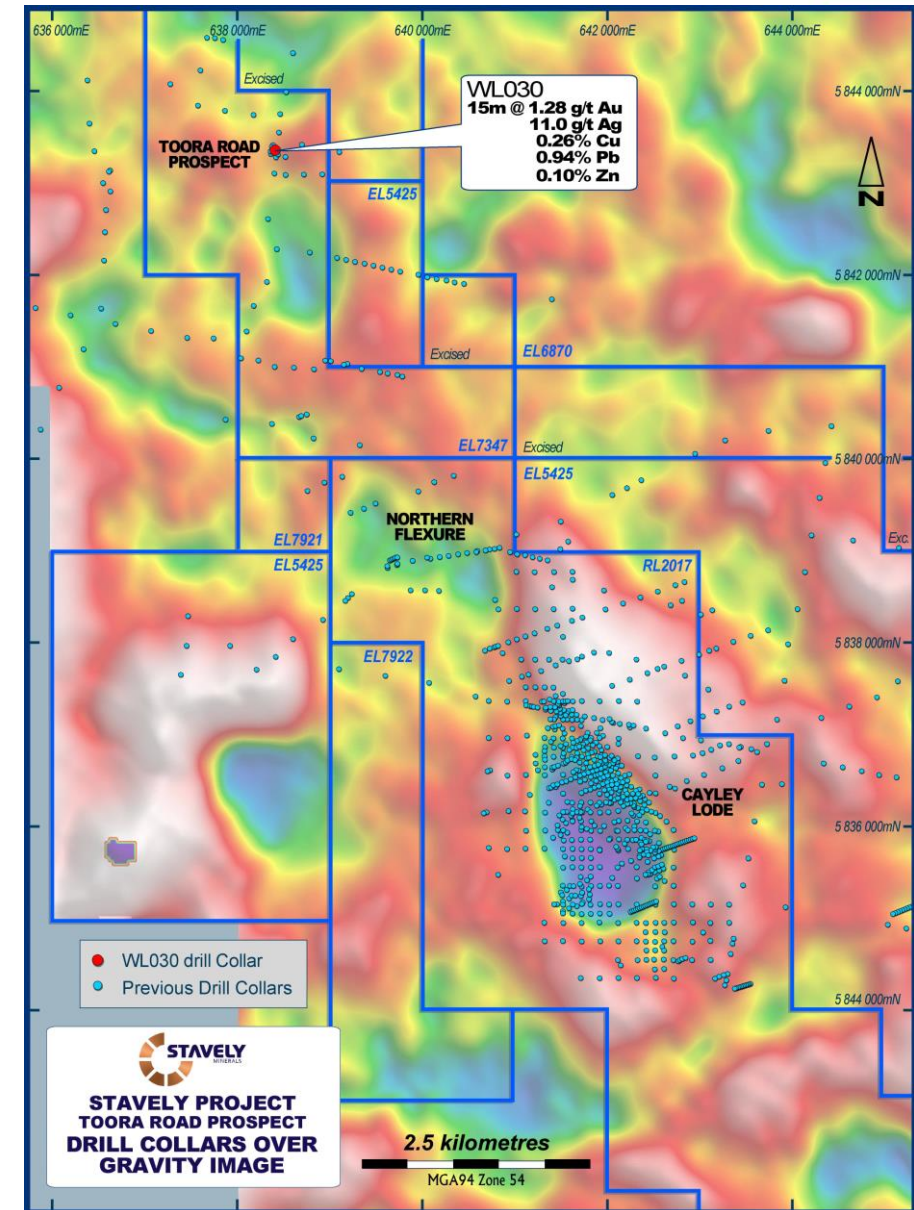
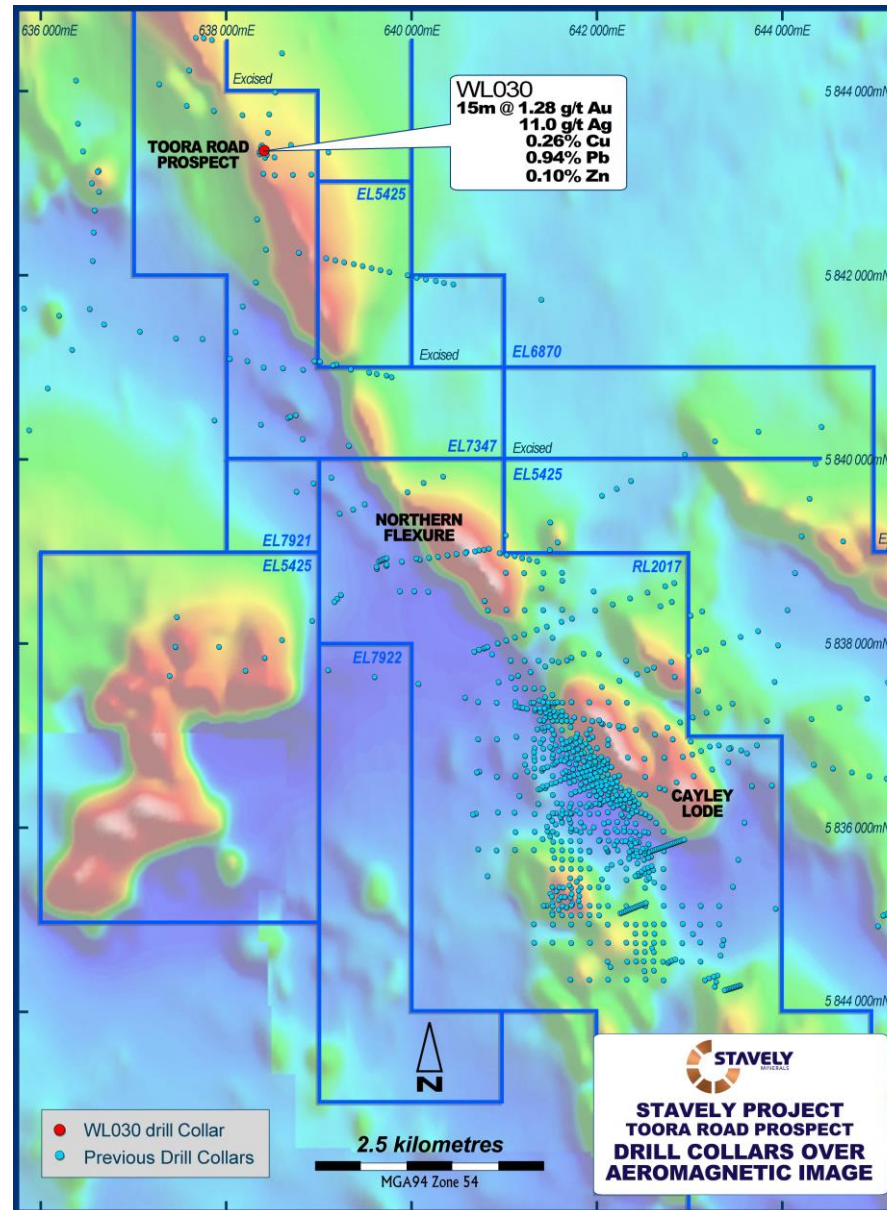


Toora Road

Toora Road Prospect

- Same magnetic trend as the Cayley Lode and the Northern Flexure prospect (left image)
- Historic aircore drill intercept (CRA): **15m @ 1.28g/t Au, 11g/t Ag, 0.26% Cu, 0.94% Pb and 0.10% Zn** immediately north of a prominent gravity low (right image)

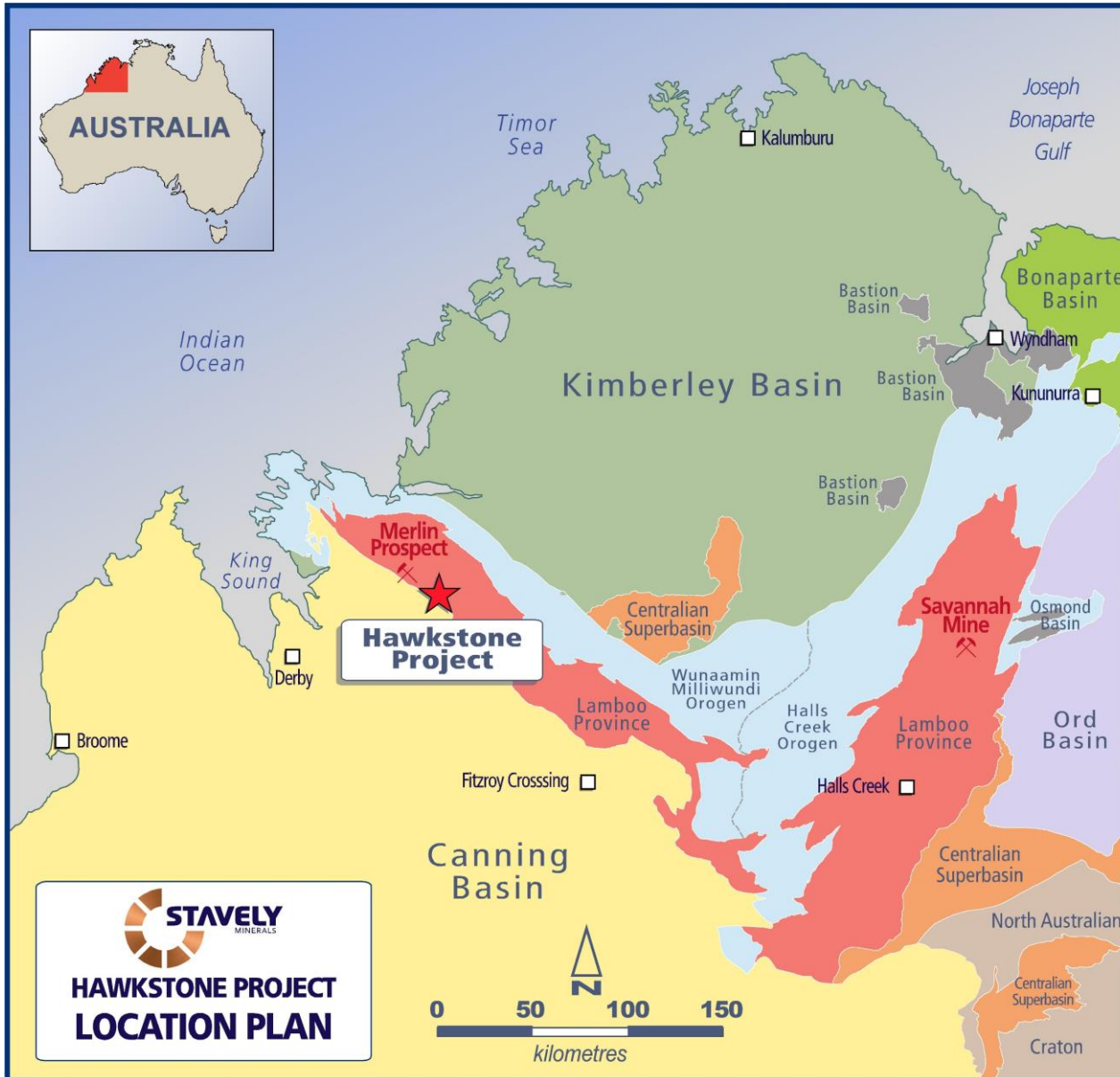
See Stavely Minerals Prospectus and available from www.stavely.com.au





Hawkstone Ni-Cu-Co Project

Hawkstone Ni-Cu-Co Project

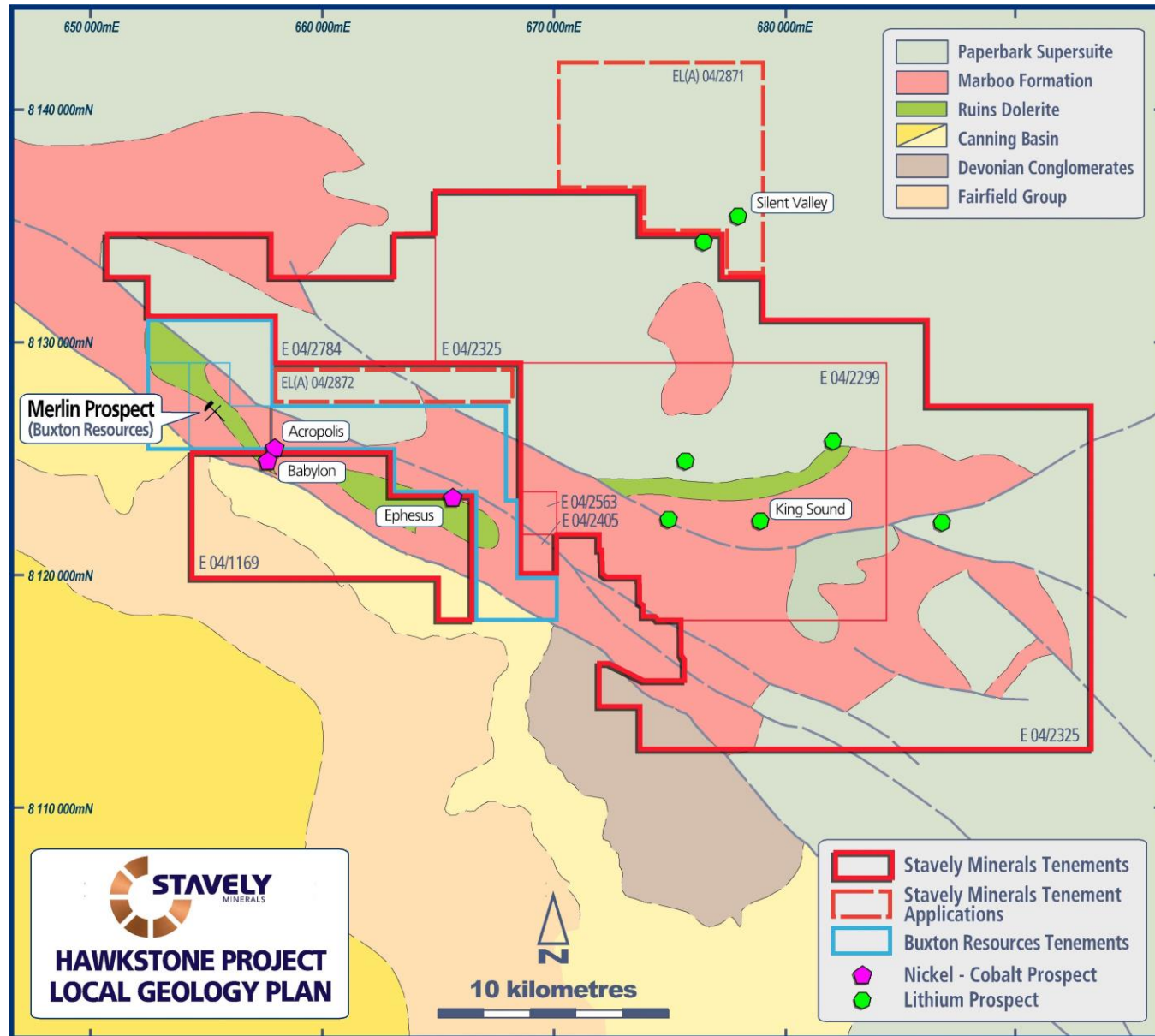


Hawkstone Ni-Cu-Co Project

- 1,800km²
- ~30km of the prospective Ruins Dolerite
- Buxton / IGO JV Merlin discovery 1km from tenement boundary
 - High tenor ave. 8%Ni
- Complimentary field season (winter) to the Stavely Project (summer)
- Potential for Li pegmatites as there are historic Sn-W-Ta mines

See ASX announcement 23/05/2023 and available from www.stavely.com.au

Hawkstone Ni-Cu-Co Project



Hawkstone Ni-Cu-Co Project

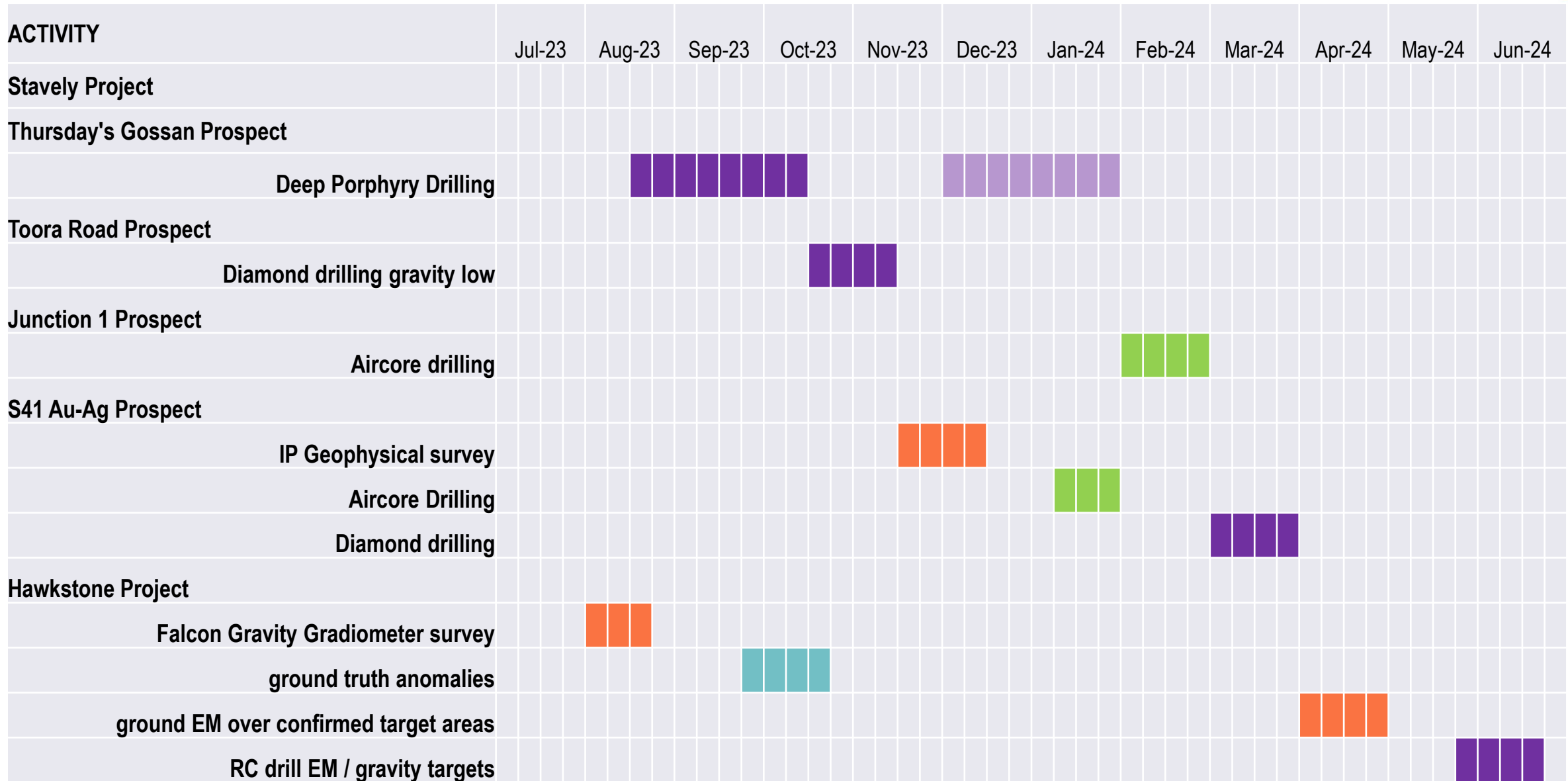
- 1,800km²
- ~30km of the prospective Ruins Dolerite
- Buxton / IGO JV Merlin discovery 1km from tenement boundary
 - High tenor ave. 8%Ni
- Complimentary field season (winter) to the Stavely Project (summer)
- Potential for Li pegmatites as there are historic Sn-W-Ta mines
- Every currently operating Li mine in WA was an historic Sn, W or Ta mine

See ASX announcement 23/05/2023 and available from www.stavely.com.au



Work Programme

12-month Work Programme



Copper and Nickel ...the Ultimate “Future-Facing” Commodities



3.6 tonnes of copper for every MW of wind power



4-5 tonnes of copper for every MW of photo-voltaic solar power

In order to migrate to a **low-carbon economy** and provide **alternative energy solutions**, certain strategic minerals are required to build the wind farms, solar farms, electric vehicles and high-technology needed to facilitate this transition.

Copper and Nickel are some of the key metals required

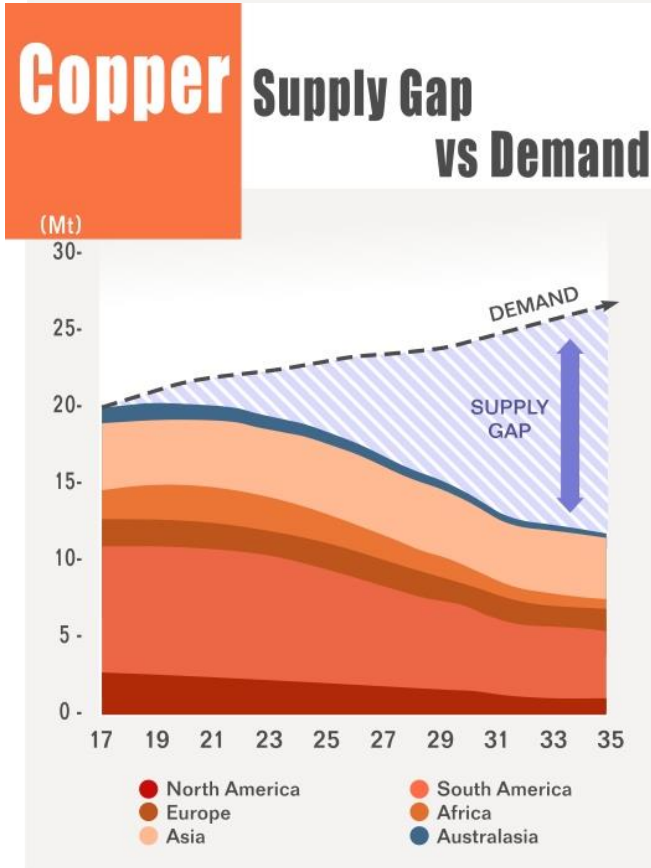


4 x more copper in an electric car than one with an internal combustion engine



6 types of bacteria killed by copper surfaces

Copper and Nickel...Compelling Market Fundamentals



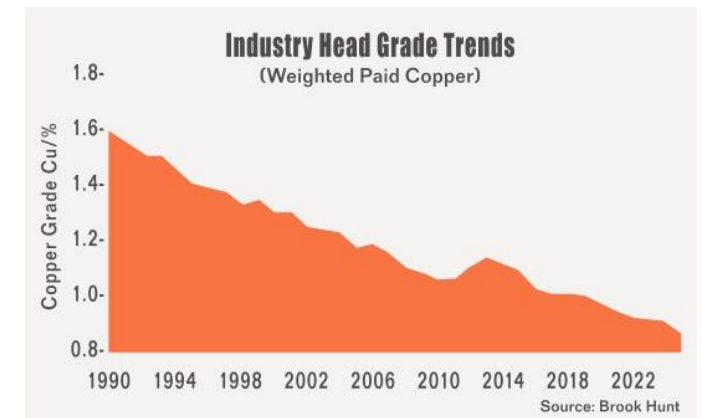
CRU estimates a 15 million tonne copper supply deficit by 2035

There are very few high-quality projects coming on stream in first world jurisdictions



Escondida, the world's largest copper mine:

- 1.72% Cu average head grade in 2007
- 0.52% Ore Reserve grade in 2019



Corporate Summary



CAPITAL STRUCTURE

| | |
|------------------------------|-------------|
| ASX Ticker | SVY |
| Share Price (18/07/23) | \$0.09 |
| Shares on Issue ¹ | 370M |
| Cash (31/03/23) ² | \$3.9M |
| Market Capitalisation | \$33.3M |
| Management and Staff | ~10% equity |

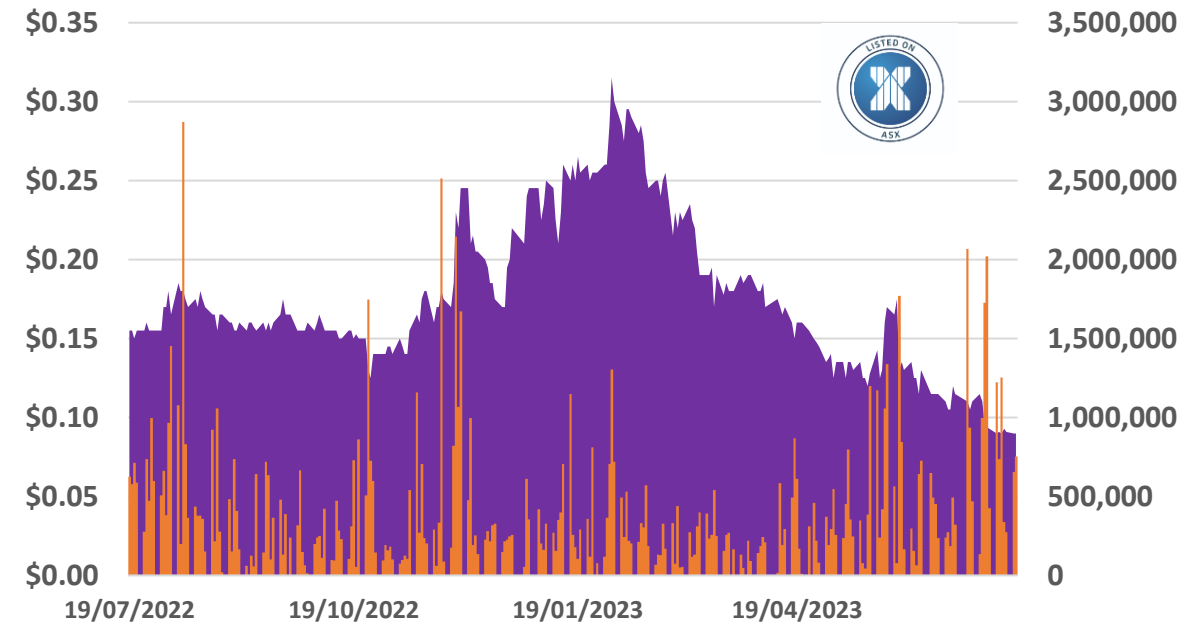
²Not including \$3.55m raising – see ASX announcement 28/06/2023

Directors

| | |
|-----------------|--|
| Chris Cairns | Executive Chairman |
| Jennifer Murphy | Technical Director |
| Peter Ironside | Non-Executive Director |
| Amanda Sparks | Non-Executive Director & Company Secretary |
| Rob Dennis | Non-Executive Director |

¹Fully diluted including issue of 4.5m performance rights for the acquisition of the Hawkstone Ni-Cu-Co Project – See ASX announcement 23/05/2023

12-month Share Price to 18 July 2023



Summary – Key Investment Takeaways



- ✓ First-mover position (1,461km²) in a potential emerging copper province
- ✓ Discovery of structurally-controlled high-grade lode-style copper-gold-silver mineralisation similar to the Magma (Arizona) and Butte (Montana) deposits
- ✓ Initial Mineral Resource estimate completed, obvious high-grade extensional opportunities **PLUS the deep porphyry discovery opportunity**
- ✓ Outstanding potential for a new porphyry province with regional targets and emerging discoveries – Junction 1, S41 Breccia and Toora Road
- ✓ Hawkstone Ni-Cu-Co Project provides an outstanding opportunity for discovery in an emerging Ni province
- ✓ BIG targets





MINERALS

ASX Code: SVY

Contact Us:
Stavely Minerals Limited
Level 1, 168 Stirling Highway
Nedlands WA 6009
www.stavely.com.au
info@stavely.com.au
Ph: 08 9287 7630

The information in this presentation is extracted from information available to view on www.stavely.com.au. The Company confirms that it is not aware of any new information or data that materially affects the information included in the original market announcement and, in the case of estimates of Mineral Resources or Ore Reserves, that all material assumptions and technical parameters underpinning the estimates in the relevant market announcement continue to apply and have not materially changed. The Company confirms that the form and context in which the Competent Person's findings are presented have not been materially modified from the original market announcement.

Mineral Resources Classifications



Table 1. Cayley Lode Initial Mineral Resource estimate

| Resource Material | Resource Category | Cut-off | Tonnes (Mt) | Grade | Cont. | Grade | Cont. | Grade | Cont. |
|-----------------------------|-------------------|---------|-------------|--------|-----------|----------|---------|----------|-----------|
| | | (Cu %) | | (Cu %) | Cu (Mlbs) | (Au g/t) | Au (oz) | (Ag g/t) | Ag (oz) |
| Primary Mineralisation (OP) | Indicated | 0.2 | 5.87 | 1.04 | 134.4 | 0.23 | 43,407 | 7 | 1,321,074 |
| | Inferred | 0.2 | 1.7 | 1.3 | 49 | 0.2 | 10,931 | 9 | 491,907 |
| Sub-Total Primary OP | | | 7.6 | 1.1 | 183 | 0.2 | 54,338 | 7.4 | 1,808,158 |
| Primary Mineralisation (UG) | Indicated | 1.0 | - | - | - | - | - | - | - |
| | Inferred | 1.0 | 1.7 | 1.8 | 69 | 0.2 | 10,931 | 6 | 327,938 |
| Sub-Total Primary UG | | | 1.7 | 1.8 | 69 | 0.2 | 10,931 | 6 | 327,938 |
| Total Cayley Lode | | | 9.3 | 1.23 | 252 | 0.23 | 65,000 | 7.1 | 2,100,000 |



Table 4. Stavely Minerals Total Mineral Resources estimates

| Resource Material | Resource Category | Cut-off | Tonnes (Mt) | Grade | Cont. | Grade | Cont. | Grade | Contained Metal | Grade | Cont. |
|------------------------|-------------------|---------|-------------|--------|-----------|----------|---------|----------|-----------------|--------|---------|
| | | (Cu %) | | (Cu %) | (Mlbs Cu) | (Au g/t) | (oz Au) | (Ag g/t) | (oz Ag) | (Zn %) | (kt Zn) |
| Total Resources | Indicated | 1 | 21.5 | 0.61 | 288 | 0.1 | 67,301 | 3.1 | 2,153,972 | 0.3 | 8 |
| | Inferred | 1 | 6.8 | 1.2 | 175 | 0.1 | 32,797 | 4.7 | 1,043,839 | 0.2 | 16 |
| Total Stavely Minerals | | | 28.3 | 0.75* | 463 | 0.11* | 100,000 | 3.5 | 3,200,000 | 0.2 | 24 |



¹ reported in compliance with the JORC Code 2012, see ASX announcement 14 June 2022