



## QUARTERLY REPORT for the Quarter Ended 30 June 2023

**Magnetic Resources NL**  
ABN 34 121 370 232

**ASX Codes:** MAU and  
MAUCA

Level 1  
44A Kings Park Road,  
West Perth, WA 6005

T +61 8 9226 1777  
F +61 8 9321 6571

PO Box 1388  
West Perth WA 6872

**Issued Capital:**  
**Shares - Quoted:**

236,954,035 ordinary shares.  
20,418,862 partly paid shares  
(\$0.20 unpaid).

**Options – Unquoted**

4,900,000 options  
exercisable at \$1.515 on or  
by 31 December 2024

3,750,000 options  
exercisable at \$1.20 on or by  
6 December 2025

2,216,502 options  
exercisable at \$0.68 on or by  
10 May 2025

**Cash:** \$4.1m

**Directors:**

**George Sakalidis**  
Managing Director

**Eric Lim**  
Non-Executive Chairman

**Hiang Sian Chan**  
**Ben Donovan**  
Non-Executive Directors

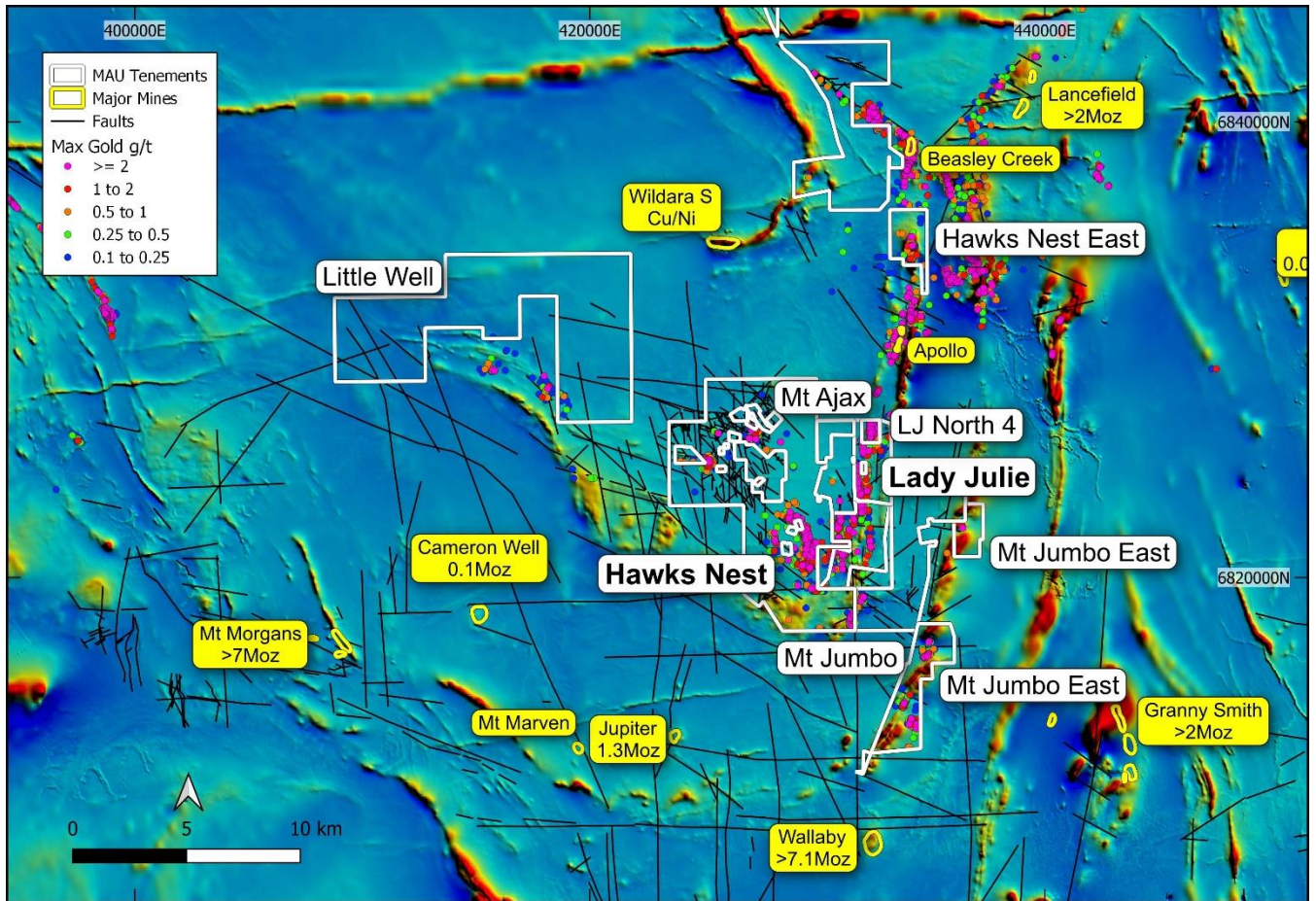
**Company Secretary**  
Ben Donovan

### HIGHLIGHTS

- Major drilling activities continued at Lady Julie North4 (LJN4) which had outstanding thick drill intersections including 60m at 3.6g/t from 96m in MLJRC738. Follow up drilling down dip had further thick high-grade intersections of 45m at 2.65g/t from 130m in MLJDD015 and 30m at 5.53g/t from 145m in MLJDD016 (Figure 2).
- Two diamond holes (MLJDD015, 16) have revealed strong silica-pyrite and breccia alteration that are up to a very thick 52m in combined thickness in MLJDD015, with a strong correlation with the main mineralised gold intervals (Figure 2). This breccia and silica-pyrite zone is being further tested with two deeper holes. This programme has already started. The nature and extent of breccia zones are important in the nearby world class Sunrise Dam Deposit because brecciated veins and shoots often carry the highest grades and are associated with many of the individual deposits at depth and near surface.
- The main mineralised zone is continuous over the 800m of strike and dips 35 to 45 degrees to the east and is thickening to the south. Deeper holes are planned to the south of the intersection of 60m at 3.6g/t from 96m in MLJRC738 as the existing holes to the south have ended in mineralisation. Five holes are planned to help outline these thicker high grade zones going southwards.
- In addition, an upper strongly mineralised zone shown with an intersection of 54m at 1.95g/t from 94m in MLJRC679 is open to the north and south and further RC drill holes are planned here as well. A significant number of drillholes end in mineralisation and are outside the resource (Table 2 and Figure 3). This will ultimately add to the existing resource at LJN4.
- Most importantly the down dip extension of the intersection of 30m at 5.53g/t from 145m in MLJDD016 is still open down dip as is the entire 800m strike length of the LJN4 deposit, which is also being tested with a number of deeper drill holes.
- Assays are pending for 7 RC holes for 1,222m and 12 diamond holes for 1,324m, which are mainly testing for further extensions of the mineralisation outside the resource.
- Further resource extensions are anticipated with planned deep drilling of 4 RC holes for 916m. This deeper drilling will be assessed for potential extensions as well especially within the thick breccia silica pyrite zones.

## Laverton Area

Magnetic Resources NL has 179km<sup>2</sup> in the Laverton region comprising E38/3127 Hawks Nest, E37/3100 Mt Jumbo, E38/3205 Hawks Nest East, E38/3209 Mt Ajax, P38/4317–24 Mt Jumbo East, E39/2125, P39/6134-44 Little Well and P38/4346, P38/4379-84, P38/4170 Lady Julie (Figure 1). Table 1 shows the exploration completed to date and recent/proposed exploration.



**Figure 1. Hawks Nest, Hawks Nest East, Lady Julie, Little Well, Mt Ajax, Mt Jumbo and Mt Jumbo East projects, showing tenements, major shear zones, targets and gold deposits and historic workings.**

**Table 1. Laverton region drilling summary.**

Project/Tenements	Surface sampling completed	Drilling & ground magnetics completed	Proposed exploration
Hawks Nest E38/3127, M38/1041	5,411 soils 117 rock chips	1,118 RC holes for 71,036m 201 RAB holes for 2,726m 5 Diamond holes for 501m 87 AC holes for 3,518m 507km ground magnetics	
Lady Julie P38/4346, P38/4379-84, E38/3127, P38/4170	2,148 soils 15 rock chips	725 RC holes for 66,851m 290 shallow RAB for 1,691m 17 Diamond holes for 2,618m 5 Diamond tails for 892m	11 RC holes for 2,444m

		215 AC holes for 8,607m 125km ground magnetics	
Mt Jumbo E38/3100, E38/3127	3 rock chips 43 lags	3 RC holes for 563m 2 Diamond holes for 457m 143km ground magnetics	
Mt Jumbo East P38/4317–24	23 rock chips 155 lags	33 RC holes for 2,527m 229km ground magnetics	
	1 rock chip		

### Lady Julie area (P38/4346, P38/4379–4384, E38/3127, P38/4170)

The Lady Julie North 4 gold mineralisation is expanding in size and depth and there are many new thick high-grade drill hole intersections as shown in the highlights in Table 2 below.

The central part of the 800m long LJV4 deposit has been infill drilled with very promising results including 45m at 2.65g/t from 130m in MLDD015, 30m at 5.53g/t from 145m in MLJDD016, 31m at 1.36g/t from 37m in MLJRC741, 26m at 1.90g/t from 40m in MLJRC763 and 38m at 1.22g/t from 160m in LWEO3 and 36m at 1.38g/t from 164m in LWEO4. Further highlights of this drilling of 1508m of RC and 647m of diamond drilling are shown in Table 2 and Table and Figure 2.

Further anticipated good results are pending from 11 RC holes for 2444m and 4 diamond holes for 527m from the central and southern part of the LJV4 deposit where there are previous thicker intersections being followed up at depth and as infill drilling.

**Table 2. Highlights of the drilling at Lady Julie North 4 for the June Quarter**

Hole No.	Easting	Northing	From	To	Width	Gold	Sample
	MGAz51	MGAz51	metres	metres	metres	g/t	Type
Lady Julie North 4							
MLJDD015	432405	6826340	130	175	45	2.65	1m diamond core <sup>^</sup>
MLJDD016	432487	6826310	54.9	63.0	8.1	3.77	1m diamond core <sup>^</sup>
		and	145	175	30	5.53	1m diamond core <sup>^</sup>
MLJRC690	432315	6826409	33	76	43	1.18	1m splits
MLJRC735	432435	6826284	56	126	70	1.05	4m composites <sup>*^</sup>
MLJRC738	432383	6826338	96	156	60	3.57	4m composites <sup>*^</sup>
		including	96	104	8	15.93	4m composites <sup>*^</sup>
MLJRC736	432465	6826284	80	140	60	1.76	4m composites <sup>*^</sup>
MLJRC741	432330	6826435	37	68	31	1.36	1m splits
MLJRC755	432397	6826635	106	115	9	3.73	1m splits <sup>^</sup>
MLJRC757	432380	6826685	70	84	14	2.85	1m splits <sup>^</sup>
MLJRC761	432409	6826733	85	96	11	3.73	1m splits
MLJRC763	432398	6826795	40	66	26	1.90	1m splits <sup>^</sup>
MLJRC769	432456	6826435	140	164	24	2.89	4m composites
MLJRC770	432463	6826532	155	173	18	2.81	1m splits
LWEO3	432437	6826392	160	198	38	1.22	4m composites <sup>*</sup>



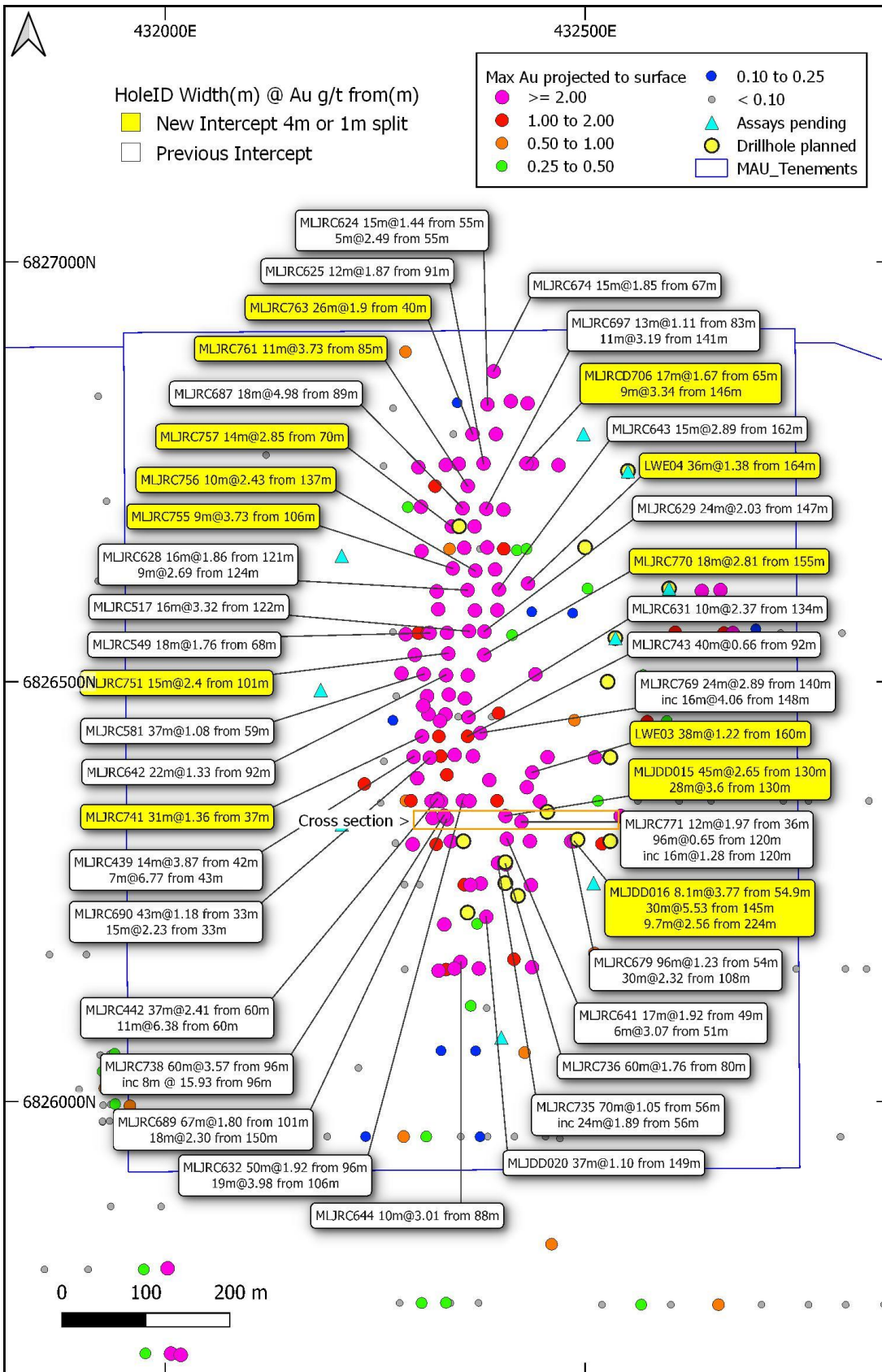


Figure 3. The Lady Julie North 4 deposit has numerous significant thick intersections from the latest drill programme (yellow large rectangular label) and previous drilling (white label) with maximum gold projected to surface and planned deeper drillholes (in yellow) and holes with assays awaited (in blue).

The follow up deeper RC/diamond holes tested and are looking to extend two and in some cases three stacked lodes found in the central, southern and northern parts of LJN4 and many of these are outside the resource and have potential for the enlargement of the Lady Julie North 4 Resource (Indicated and Inferred) of 3.2Mt at 1.93g/t for 204,900oz at a 0.5g/t cutoff (Figure 1). This forms part of the Lady Julie Combined Resources (Indicated and Inferred) of 5.89Mt at 1.68g/t for 317,900oz at a 0.5g/t cutoff (Table 3).

The updated combined (Indicated and Inferred) Mineral Resources estimate for the whole project area (Table 4) were announced recently on 3 February 2023, "Expands Mineral Resources Estimate" and include:

13.5Mt @ 1.40g/t Au totaling 605,000oz of gold at 0.5g/t cutoff.

This represents an increase of 18% of the total ounces over the 27 June 2022 ASX Release Maiden

## **Alteration Styles Lady Julie North 4**

Recent diamond drilling at LJN4 has revealed three distinct types of mineralisation:

- Vuggy silica and/or silica-pyrite mineralisation: this intense alteration destroys the nature of the protolith and comprises a porous network of silica veins and masses, with or without disseminated pyrite, in a clayey, sandy matrix.
- Polymictic breccia: a mixed breccia of chert, felsic porphyry, and ironstone (possibly after pyrite), sometimes with quartz or silica clasts, in a siliceous or ferruginous matrix. Pyrite content is highly variable ranging up to semi-massive to massive in places.
- Silicified ultramafic: the footwall ultramafic sequence at LJN4 is mineralised in pale, bleached and silicified zones showing intense deformation (informally termed "visceral" texture) with or without quartz stockwork veining and with minor disseminated pyrite.

Photos of the mineralisation types are shown below and some examples of both breccia alteration and silica pyrite alteration in the MLJ22015 core trays with an overlaid gold content for each interval of core measured. The gold mineralisation strongly correlates with the intense alteration and appears to occur in a series of moderately east-dipping (40-45°) zones ranging from a few metres up to 52 metres in true width. Sometimes these zones appear to coalesce to form broader mineralised zones. The silica-pyrite and breccia mineralisation occur in an interdigitated sequence of massive chert and carbonate intruded by felsic porphyries. This sequence also dips moderately to the east. Strong thick breccia zones are also present within the Sunrise Dam Deposit owned by Anglo Ashanti where the breccia lodes carry significant higher- grade mineralisation are associated with a number of internal deposits. In most cases they are near vertical and link the sub horizontal major shear zones and can also be subparallel to the major mineralised shear zones near surface. The silicified ultramafic mineralisation occurs in an ultramafic unit in the footwall of the chert-carbonate sequence.

MLJDD020\_178.0m\_Polymictic Breccia with silica-pyrite clast



MLJDD018\_77.5m\_Polymictic Breccia



MLJDD018\_164.5m\_Massive pyrite in Breccia

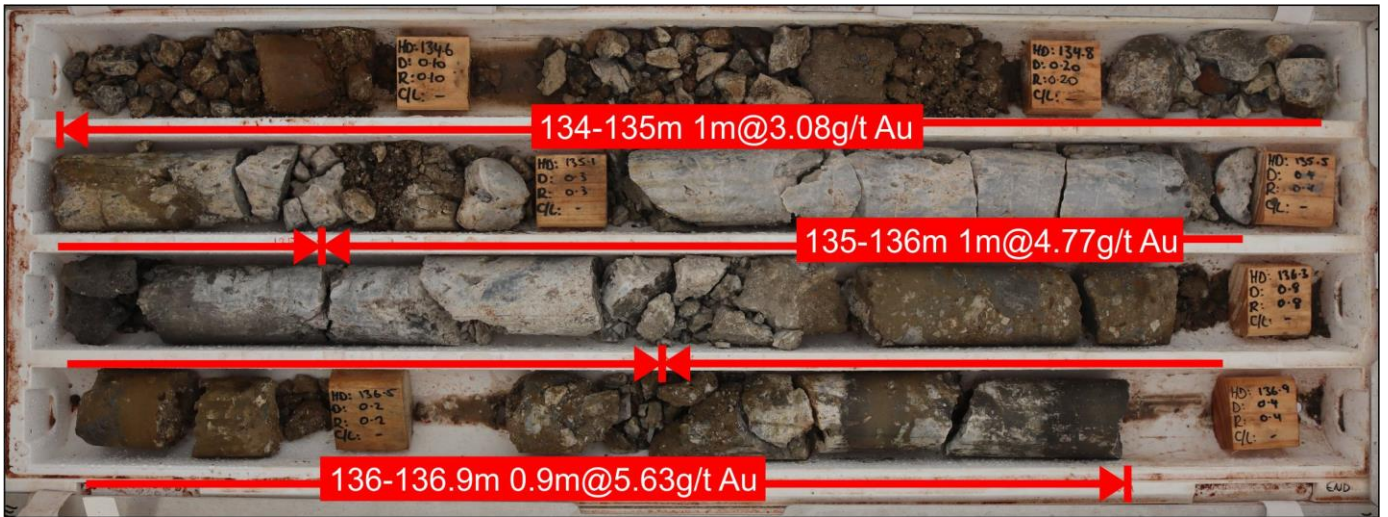


MLJDD018\_198.0m Vuggy Silica Alteration

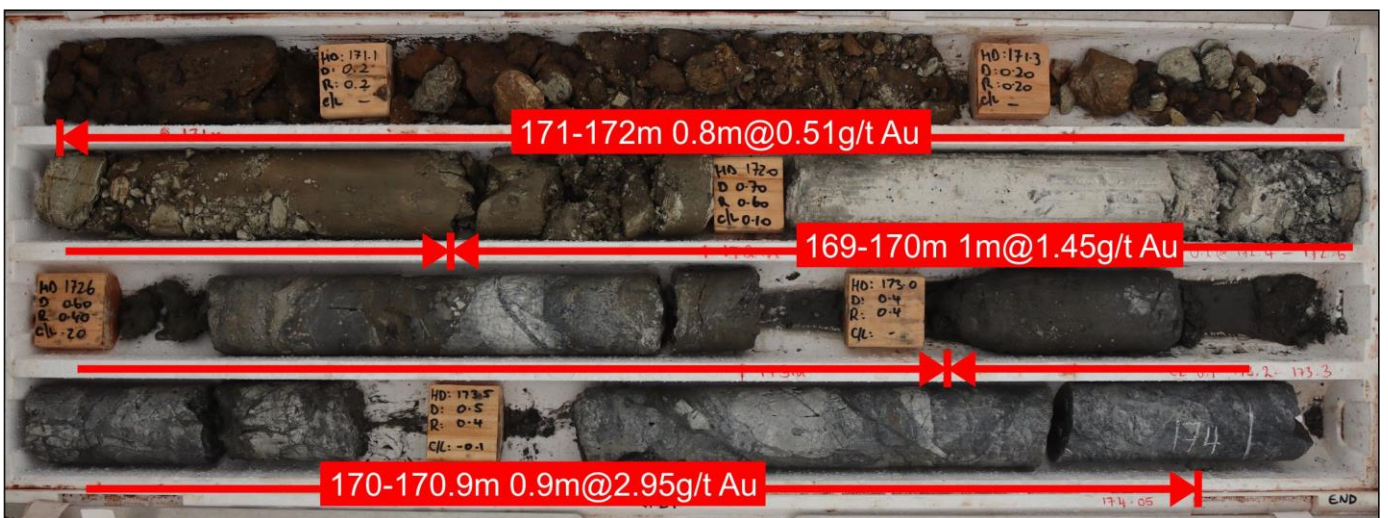




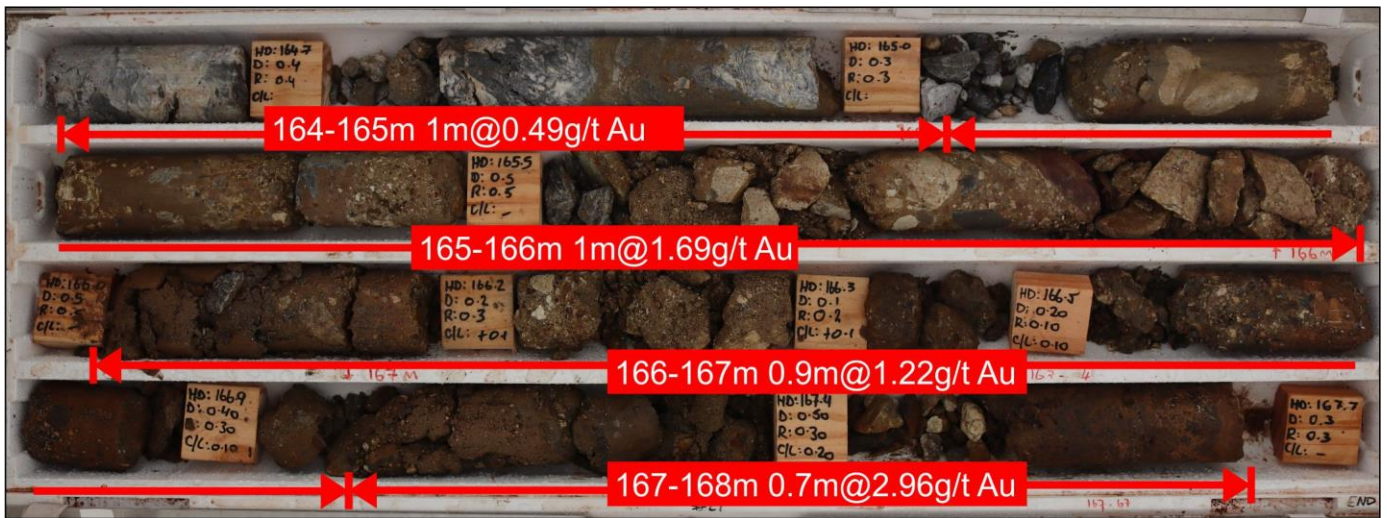
MLJDD019\_148.4m\_visceral texture in bleached, silicified ultramafic.



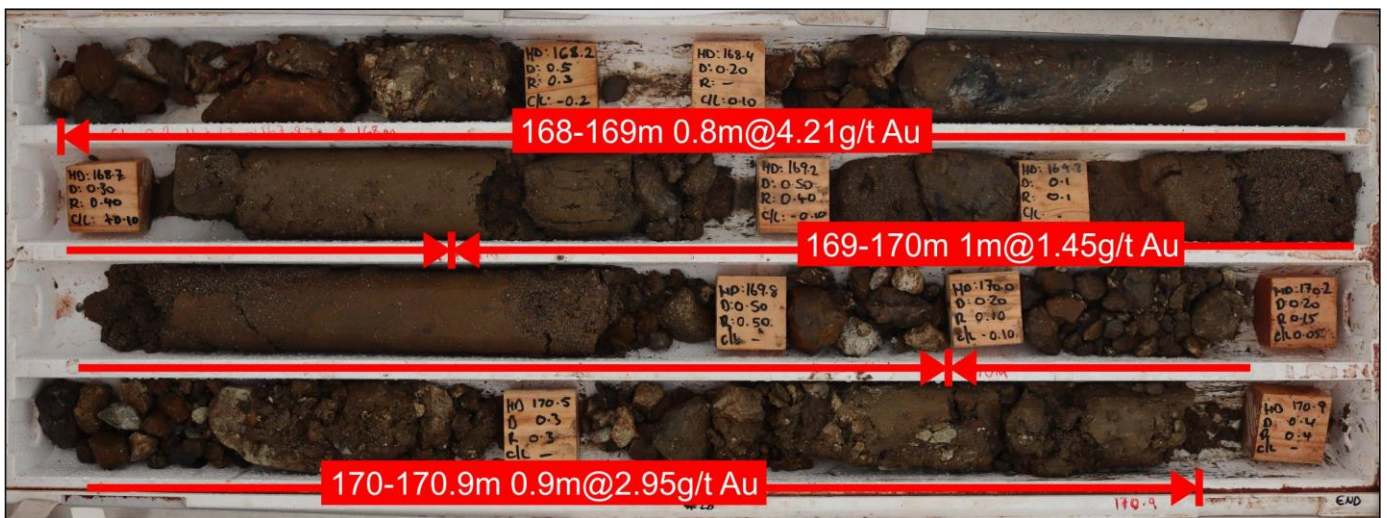
MLJDD015 Silica-Pyrite Alteration



MLJDD015 Breccia Alteration



MLJDD015 Breccia Alteration



MLJDD015 Breccia Alteration

The Lady Julie North 4 deposit is only 2.5km North of the Lady Julie Central deposit which in turn is 2.5km NE of the HN9 deposit (Figure 4). These three areas are all shallow deposits and, in some cases, starting from surface providing low strip ratios and potential for economic ore that is open-cuttable and are effectively part of one mining centre.

Gold mineralisation at LNJ4 is hosted in a sequence of ultramafics, massive carbonate (marble) and chert intruded by felsic porphyries. This sequence is cut by a major N-S braided shear complex known as the Chatterbox Shear Zone (CSZ) which is known to host significant mineralisation to the north. Petrological studies are in progress to determine if the carbonate and chert units are in fact forms of intense carbonate and silica alteration associated with the CSZ.

The Chatterbox shear zone is a complex N to NNE-trending, east-dipping structural corridor which can be traced for some 22km extending from Magnetic Resources' southern boundary at Mt Jumbo and through Lady Julie North 4 and as far north as the Beasley Creek gold deposit on Magnetic's NE boundary (Figure 5). Within Magnetic's tenements the shear zone can be traced for a distance of 12km (Figure 4). The shear zone is interpreted to comprise a series of braided faults and shears within a corridor ranging from 100m to 250m wide and is interpreted to have formed as a reverse fault on the limb of the regional Margaret Anticline during the latter stages of its folding.

Importantly, this shear zone is closely associated with, gold mineralisation at several locations along its length including Magnetic's LJNI4 and Mt Jumbo deposit. This shear is gold rich and gold deposits further north of Magnetic's tenements contains the Beasley Creek and Apollo deposits and is interpreted to extend south towards the world class Wallaby deposit. It is evident in aeromagnetic imagery and in gravity images (Figure 5).

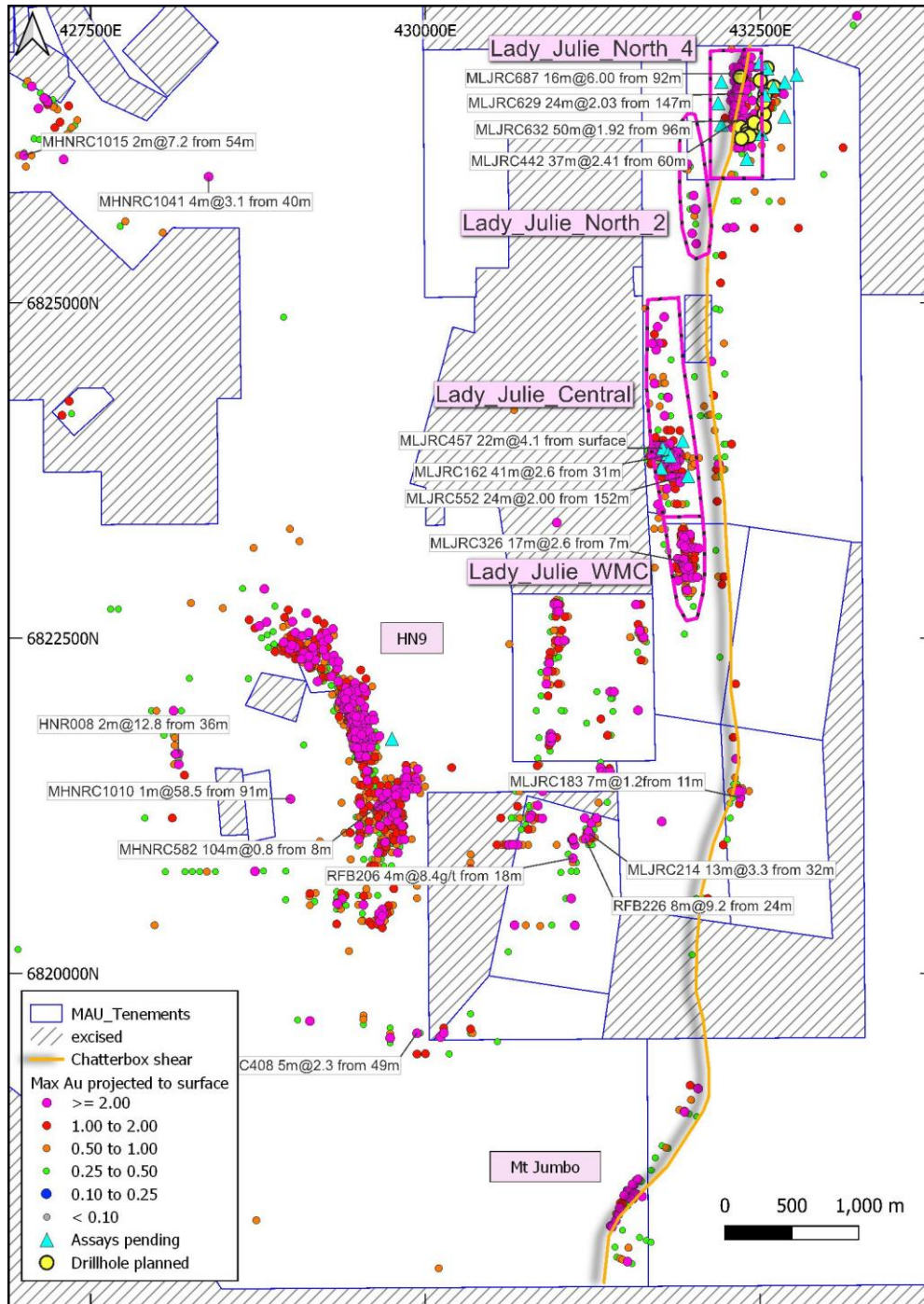


Figure 4. Gold intersection overview covering the Lady Julie North4, Lady Julie Central, Lady Julie WMC, HN9 and Mt Jumbo Projects showing some highlighted intersections (white label), significant historical and Magnetic intercepts (maximum Au projected to surface), planned holes in yellow and highlighted Chatterbox shear extending south from the Lady Julie North 4 Deposit.

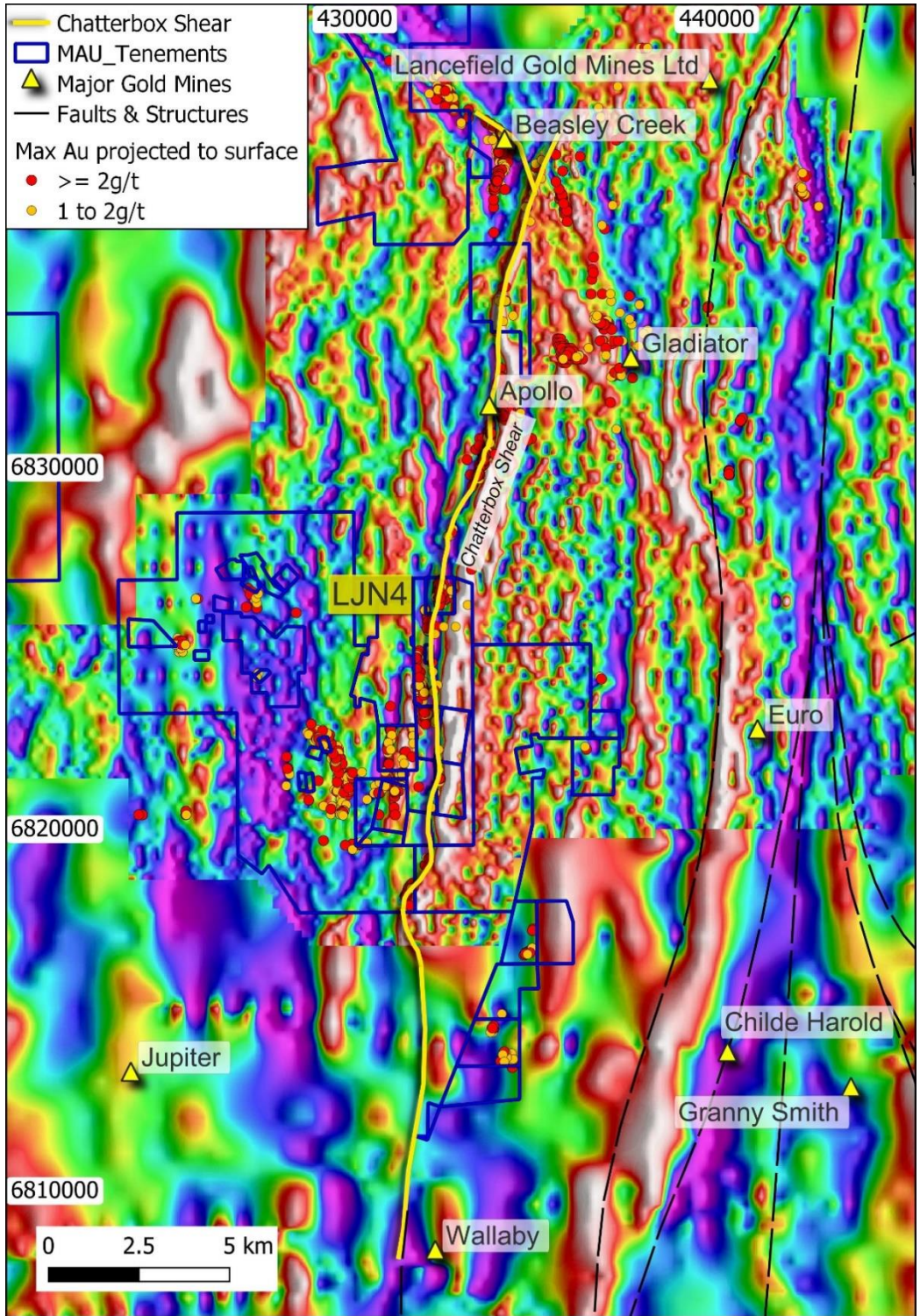


Figure 5. The Lady Julie North 4 Deposit within the Chatterbox Interpreted Shear shown on a gravity image with other major gold deposits located along it.

**Table 3. Total Mineral Resource by Deposit at 0.5 g/t Au Cutoff.**

“Source table from MAU ASX release “Expands Mineral Resources Estimate 3 February 2023.”

Deposit	Classification	Au Cutoff	Volume	Tonnes	Density	Au	Ounces
HN9	Indicated	0.50	792,000	1,995,000	2.52	1.29	82,800
Lady Julie	Indicated	0.50	765,000	1,986,000	2.60	1.52	97,100
HN3	Indicated	0.50	139,000	357,000	2.58	0.72	8,300
HN5	Indicated	0.50	3,800	8,400	2.23	1.59	430
Mt Jumbo	Indicated	0.50	168,000	429,000	2.55	1.05	14,500
Homeward Bound South	Indicated	0.50	0	0	0.00	0.00	0
HN9	Inferred	0.50	460,000	1,182,000	2.57	1.25	47,600
Lady Julie	Inferred	0.50	1,484,000	3,894,000	2.62	1.76	220,800
HN3	Inferred	0.50	95,000	243,000	2.57	0.85	6,600
HN5	Inferred	0.50	17,900	43,700	2.44	0.76	1,060
Mt Jumbo	Inferred	0.50	736,000	1,887,000	2.57	1.16	70,500
Homeward Bound South	Inferred	0.50	563,000	1,442,000	2.56	1.20	55,600
HN9	Total	0.50	1,252,000	3,176,000	2.54	1.28	130,000
Lady Julie	Total	0.50	2,249,000	5,887,000	2.61	1.68	317,900
HN3	Total	0.50	233,000	600,000	2.57	0.77	15,000
HN5	Total	0.50	21,600	52,100	2.41	0.89	1,500
Mt Jumbo	Total	0.50	904,000	2,316,000	2.56	1.14	85,000
Homeward Bound South	Total	0.50	563,000	1,442,000	2.56	1.20	56,000

**Table 4. Total Mineral Resource at 0.5 g/t Au Cutoff**

“Source table from MAU ASX release “Expands Mineral Resources Estimate 3 February 2023.”

Classification	Au Cutoff	Volume	Tonnes	Density	Au	Ounces
Indicated	0.50	1,870,000	4,775,000	2.55	1.32	203,100
Inferred	0.50	3,256,000	8,692,000	2.59	1.44	402,160
<b>Total</b>	<b>0.50</b>	<b>5,226,000</b>	<b>13,467,000</b>	<b>2.58</b>	<b>1.40</b>	<b>605,260</b>

Within the HN5, HN6, HN9 and Lady Julie areas there are many new shallow intersections (Fig 1 and Table 5) with a total of 2,254 intersections (ranging from 1 to 44m) greater than 0.5g/t Au, which includes 1048 greater than 1g/t Au, 395 greater than 2g/t Au, 206 greater than 3g/t Au and 128 greater than 4g/t Au.

At Hawks Nest 5, 6, 9 and Lady Julie extensive drilling programmes have been completed. (Tables 5 and Appendix), including 1,848 RC/RCD holes totaling 138,780m (average 75m depth), 34,479 1–5m composites and 22,571 1m splits, 302 AC holes totaling 12,125m, 3,049 2–6m composites and 294 1m splits and 22 Diamond holes totaling 3,119m including the Geotech programme comprising 10 RC drillholes totalling 670m and 8 diamond holes totalling 776m and Hydrology programme comprising 6 RC drillholes totalling 832m.

Assays are pending for 7 RC holes (2 Hydrology) for 1,222m and 12 diamond holes (8 Geotech) for 1,324m.

This release is reporting on 377 2-4m composite and 858 1m splits from 45 RC/RCD drillholes (MLJRC713,714,717,718,720-722,728-734,741,742,744,746-761,763-766,770 & 772, MLJRCD706 & 708 and Hydrology drillholes LWE02-05) and 647 1m diamond core samples from 4 DD holes (MLJDD013,015,016 & 019) totaling 2,982m at Lady Julie.

The nearby Sunrise Dam, Wallaby and Jupiter Gold Deposits have persistent internal shallow-dipping mineralised lodes that are often called shear zones or thrust zones, which are ubiquitous throughout these deposits and have been defined down to 1500m depth at the Wallaby deposit. In addition, many discoveries in recent times have been made by drilling below 100m because the historical drilling was far too shallow. At HN5, 6, 9 and Lady Julie the average hole depth is only 75m providing tremendous scope for upside potential.

Managing Director George Sakalidis commented: "With the Australian gold price at near record levels of \$2860 the Laverton Project Resources encompassing Lady Julie Central, Lady Julie North 4, HN9, Mt Jumbo and Homeward Bound South, are shaping up and have potential for large-scale shallow open-cuttable deposits.

We see up to three stacked zones within the centre and the northern end of LJN4 and our new drilling completed within the central part of the 800m long LJN4 deposit has been infill drilled and extended with promising results including 45m at 2.65g/t from 130m in MLDD015, 30m at 5.53g/t from 145m in MLJDD016, 31m at 1.36g/t from 37m in MLJRC741, 26m at 1.90g/t from 40m in MLJRC763 and 38m at 1.22g/t from 160m in LWEO3 and 36m at 1.38g/t from 164m in LWE04.

This central section is very promising due to the excellent grades and thicknesses found here and the strong correlation with breccia and silica-pyrite zones, which are prevalent in the Sunrise Dam deposit both parallel to near surface shear zones and vertical going downwards into several of their individual deposits.

A number of these thicker intersections including 60m at 3.6g/t from 96m in MLJRC738 are being tested to the south as they are still open. The upper zone is being followed up as well, both north and south of MLJRC679 which has an intersection of 54m at 1.95g/t from 94m. Most importantly, the recent down dip intersection of 30m at 5.5g/t from 145m in MLJDD016 (which has a strong breccia and silica-pyrite alteration) is open at depth and is being followed up with two deeper holes locally and a number of holes along the entire strike over the 800m length of the LJN4 deposit as it still remains open down dip. This provides strong potential to grow the LJN4 resource.

## Nickel-Cu-PGE and REE Projects

These projects were selected based on aeromagnetic interpretation after noting the structural setting of the Julimar complex and the Gonneville mineralised discrete magnetic mineralised Ni-Cu-PGE rich intrusion. The Julimar discovery in March 2020 has led to a massive pegging rush covering 30,000 sq. km. The Julimar Intrusive Complex flags the existence of a new and unexplored West Yilgarn Ni-Cu-PGE Province along the western margin of the Archean Yilgarn Craton.

The western tenements Benjaberring and Goddard are prospective for nickel, PGE elements, Cu and Au. The eastern tenements are prospective for REE after shallow, thick, strong REE intersections were made within the Trayning project (Figure 1). Access to various targets throughout the six tenements is ongoing and currently there are four access agreements over parts of the Trayning, Benjaberring and Goddard projects.

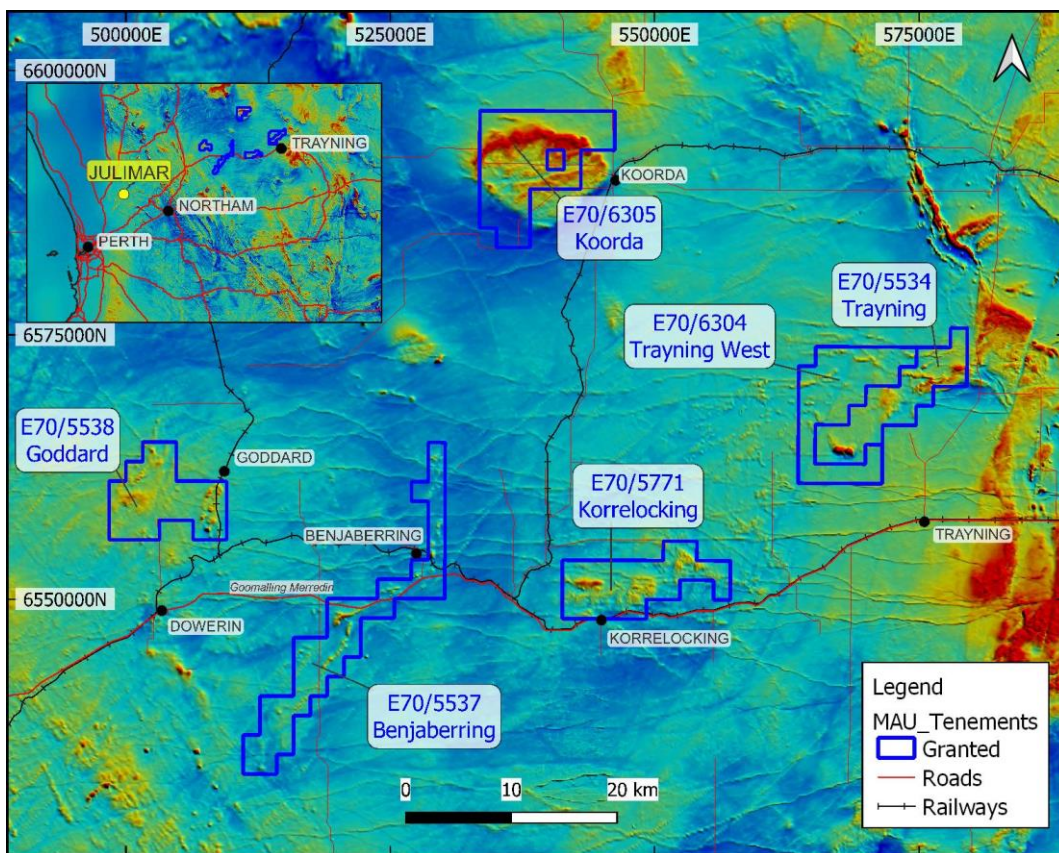


Figure 6. Coverage of Magnetics six projects NE of Julimar overlaid on the regional aeromagnetics

## Other Projects

The Company actively reviews other projects and tenements for acquisition and development within the Leonora–Laverton region.

## Iron Ore

The Company has an agreement signed with Northam Iron Pty Ltd (now Northam Resources Pty Ltd) regarding the sale of the Company's iron ore assets, with the agreement providing for further payments totalling \$500,000 and a sliding scale royalty with payments starting at \$0.25/t for a sale price of \$80.00/t or less, and thereafter, for every increase in the sale price of \$10.00/t

## Corporate

During the quarter, Magnetic completed a capital raising of approximately \$3.24m via the issue of shares at \$0.45.

For the purpose of Section 6 of the Appendix 5B, all payments made to related parties have been paid in relation to director fees.

This announcement has been authorised for release by Managing Director George Sakalidis.

For more information on the company visit [www.magres.com.au](http://www.magres.com.au)

George Sakalidis  
Managing Director  
Phone (08) 9226 1777  
Mobile 0411 640 337  
Email [george@magres.com.au](mailto:george@magres.com.au)

The information in this report is based on information compiled by George Sakalidis BSc (Hons), who is a member of the Australasian Institute of Mining and Metallurgy. George Sakalidis is a Director of Magnetic Resources NL. George Sakalidis has sufficient experience which is relevant to the style of mineralisation and type of deposit under consideration and to the activity which he is undertaking to qualify as a Competent Person as defined in the 2012 edition of the 'Australasian Code for Reporting of Exploration Results, Mineral Resources and Ore Reserves'. George Sakalidis consents to the inclusion of this information in the form and context in which it appears in this report.

The Information in this report that relates to:

1. Promising 200m wide 0.7g/t soil geochemistry associated with extensive 1km long NS porphyries at newly named Hawks Nest 9. MAU ASX Release 15 October 2018
2. 1.1km NNW Mineralised Gold Intersections at HN9. MAU ASX Release 7 November 2018
3. Surface drilled Mineralisation extends to significant 1.5km at HN9. MAU Release 20 November 2018
4. Hawks Nest Delivers with 8m@4.2g/t Gold from 4m MAU Release 29 January 2018
5. Robust Near Surface High-grade Zone of 7m @ 4.5g/t Gold from 5m from 1m splits. MAU Release 5 March 2018
6. Hawks Nest Geochemical Survey Outlines Potential Extensions to the Prospective 7m @ 4.5g/t Gold Intersected. MAU Release 20 March 2018
7. An 865m RC drilling programme started testing promising 7m at 4.5g/t gold and eight separate anomalous soil geochemical targets at HN5. MAU Release 10 May 2018
8. Large Gold Mineralised Shear Zone Greater Than 250m at Hawks Nest 5. MAU Release 9 June 2018
9. Gold Geochemical Target Zone Grows to Significant 2km in Length at HN9. MAU Release 7 January 2019
10. Significant 2km Gold Target is open to the East on 83% of the 24 Lines Drilled at HN9. MAU Release 4 February 2019
11. Significant 2.1km Gold Target Still open to North, South, East and at Depth. MAU Release 25 March 2019
12. Gold Target Enlarged By 47% to Significant 3.1km and is still open to the North, East and at Depth. MAU Release 22 May 2019
13. HN9 Prospective Zone Enlarged by 170% with Lady Julie Tenements. MAU Release 24 June 2019
14. 200m-Wide Gold Zone Open to The Northeast and Very Extensive Surface Gold Mineralisation Confirmed at HN9 Laverton. MAU Release 27 June 2019
15. 200m Wide Gold Zone Open to the North and New 800m Anomalous Gold Zone defined at HN9 Laverton. MAU Release 4 September 2019
16. Highest Grades Outlined at HN9 and are being Followed Up and Lady Julie Shallow Drilling Commencing Shortly. MAU Release 14 October 2019
17. Central Part of HN9 Shows Significant Thickening of The Mineralised Zone to 28m. MAU Release 28 November 2019
18. Multiple Silicified Porphyry Horizons from Deep Drilling and 57m Mineralised Feeder Zone at MAU Release 17 January 2020
19. Very High-Grade Intersection of 4m at 49g/t Adjacent to 70m Thick Mineralised Feeder Zone MAU Release 5 February 2020
20. 20 km of thickened porphyry units outlined by ground magnetic interpretation at Hawks Nest 9. MAU Release 9 March 2020
21. Further Thick Down Plunge Extensions and NW Extension Shown up at HN9. MAU Release 18 May 2020
22. Four Stacked Thickened Porphyry Lodes at HN9. MAU Release 3 August 2020
23. High-Grade Intersections in Thickened Zone at HN9. MAU Release 18 September 2020
24. Follow up of 16m at 1.16g/t gold from 64m at Lady Julie MAU Release 2 November 2020
25. Shallow Seismic searching for multiple thickened lodes MAU Release 16 November 2020
26. New thickened zone in southern part of Hawks Nest 9. MAU Release 1 December 2020
27. Two RC rigs now operating at HN9 and Lady Julie. MAU Release 11 January 2021
28. Nine gold targets defined over 14km at HN5, HN6, HN9 and Lady Julie MAU Release 3 June 2021
29. Lady Julie Delivers with best wide intersection of 38m at 3.6g/t gold from 32m MAU Release 23 June 2021
30. Lady Julie North expanded to 4.6km with addition of P38/4170 MAU Release 8 July 2021.
31. Multiple thick and high-grade zones located at Lay Julie MAU Release 16 August 2021
32. Multiple thick high-grade intersections from surface located at Lady Julie MAU Release 14 September 2021
33. Thick high-grade intersections are open to the SE at Lady Julie MAU Release 22 October 2021
34. Thick high-grade intersections at Lady Julie4 MAU Release 17 November 2021
35. Homeward Bound South shapes up with 20m at 3g/t from 64m MAU Release 28 November 2021
36. Thick high-grade intersections and very high-grade vertical shoots at Lady Julie MAU Release 10 January 2022
37. Strategic Review MAU Release 27 January 2022
38. Thicker intersections continue to grow Lady Julie 1 and 4 and Homeward Bound MAU Release 21 February 2022
39. Ten new high priority targets and thick intersections at Lady Julie MAU Release 12 April 2022
40. Second parallel mineralised structure at Lady Julie Central MAU release 11 May 2022
41. Lady Julie North 4 delivers with thick intersections. MAU release 30 May 2022.
42. Maiden Mineral Resource Estimate. MAU Release 27 June 2022.
43. Thick intersection 56m at 2.2g/t Au from 96m at Lady Julie North 4. MAU release 20 July 2022.
44. Drilling commences at Lady Julie North 4. MAU Release 15 August 2022
45. Mineralisation expands both to north and south at Lady Julie North 4. MAU Release 27 September 2022



46. 52m at 1.096ppm TREO in scout drilling at Trayning. MAU Release 29 September 2022
47. High Grade Thick Intersections at Lady Julie North 4 and Lady Julie Central. MAU Release 17 November 2022
48. 52m at 1343 TREO in Scout Drilling at Trayning. MMAU Release. 24 November 2022
49. Thickest Intersections to date at Lady Julie North 4 MAU Release. 21 December 2022
50. Spin-Off of Western Australian Nickel and REE Asset to form Aureole Resources. MAU Release. 28 December 2022..
51. Positive metallurgical results from Lady Julie. MAU Release 25 January 2023
52. Expands mineral resource estimate. MAU Release 3 February 2023
53. Early works good progress at Laverton project. MAU Release 15 February 2023
54. Thick intersections remain open at depth at Lady Julie North 4. MAU Release 20 February 2023
55. Thickest intersection of 96m at 1.23g/t Au at Lady Julie North 4. MAU Release 11 April 2023
56. Further thick intersections and deeper drilling completed at Lady Julie North 4. MAU Release 14 June 2023
57. Best thick intersections to date of 60m at 3.6g/t from 96m at lady Julie North 4. MAU Release 23 June 2023

All of which are available on [www.magres.com.au](http://www.magres.com.au)

This announcement contains forward-looking statements which involve a number of risks and uncertainties. These forward-looking statements are expressed in good faith and believed to have a reasonable basis. These statements reflect current expectations, intentions or strategies regarding the future and assumptions based on currently available information. Should one or more of the risks or uncertainties materialize, or should underlying assumptions prove incorrect, actual results may vary from the expectations, intentions and strategies described in this announcement. No obligation is assumed to update forward looking statements if these beliefs, opinions and estimates should change or to reflect other future developments.

## Tenement Schedule in accordance with ASX Listing Rule 5.3.3

Tenements held at the end of the Quarter

Location	Tenement	Nature of Interest	Project	Equity (%) held at start of Quarter	Equity (%) held at end of Quarter
WA	E70/3536	Granted	JUBUK	-	Royalty Retained
WA	E70/4243	Granted	RAGGED ROCK	-	Royalty Retained
WA	E70/4508	Granted	KAURING	-	Royalty Retained
WA	E70/4692	Granted	MT JOY	-	Royalty Retained
WA	E70/5276	Granted	KAURING	-	Royalty Retained
WA	E70/5277	Granted	KAURING	-	Royalty Retained
WA	E37/1331	Granted	MALCOLM	-	2% Royalty Retained
WA	E37/1419	Granted	MALCOLM	-	2% Royalty Retained
WA	E37/1367	Granted	MELITA	-	2% Royalty Retained
WA	P37/8905	Granted	RAESIDE EAST	-	2% Royalty Retained
WA	P37/8906	Granted	RAESIDE EAST	-	2% Royalty Retained
WA	P37/8907	Granted	RAESIDE EAST	-	2% Royalty Retained
WA	P37/8908	Granted	RAESIDE EAST	-	2% Royalty Retained
WA	P37/8909	Granted	BRAISER	-	2% Royalty Retained
WA	P37/8910	Granted	BRAISER	-	2% Royalty Retained
WA	P37/8911	Granted	BRAISER	-	2% Royalty Retained
WA	P37/8912	Granted	BRAISER	-	2% Royalty Retained
WA	P37/9204	Granted	MALCOLM	-	2% Royalty Retained
WA	P37/9205	Granted	MALCOLM	-	2% Royalty Retained
WA	P37/9206	Granted	MALCOLM	-	2% Royalty Retained
WA	P37/9207	Granted	MALCOLM	-	2% Royalty Retained
WA	E37/1177	Granted	MERTONDALE	100%	100%
WA	E37/1258	Granted	MERTONDALE	100%	100%
WA	P37/8687	Granted	CHRISTMAS WELL	100%	100%
WA	P37/8688	Granted	CHRISTMAS WELL	100%	100%
WA	P37/8689	Granted	CHRISTMAS WELL	100%	100%
WA	P37/8690	Granted	CHRISTMAS WELL	100%	100%
WA	P37/8692	Granted	CHRISTMAS WELL	100%	100%
WA	P37/8693	Granted	CHRISTMAS WELL	100%	100%
WA	P37/8694	Granted	CHRISTMAS WELL	100%	100%
WA	E38/3100	Granted	MT JUMBO	100%	100%
WA	E38/3127	Granted	HAWKS NEST	100%	100%
WA	E38/3205	Granted	HAWKS NEST EAST	100%	100%
WA	E38/3209	Granted	MT AJAX	100%	100%
WA	M38/1041	Granted	NICHOLSON WELL	100%	100%
WA	P38/4126	Granted	HN9 WEST	100%	100%
WA	P38/4170	Granted	DEFIANT BORE	100%	100%
WA	P38/4317	Granted	MT JUMBO EAST	100%	100%
WA	P38/4318	Granted	MT JUMBO EAST	100%	100%
WA	P38/4319	Granted	MT JUMBO EAST	100%	100%
WA	P38/4320	Granted	MT JUMBO EAST	100%	100%

Location	Tenement	Nature of Interest	Project	Equity (%) held at start of Quarter	Equity (%) held at end of Quarter
WA	P38/4321	Granted	MT JUMBO EAST	100%	100%
WA	P38/4322	Granted	MT JUMBO EAST	100%	100%
WA	P38/4323	Granted	MT JUMBO EAST	100%	100%
WA	P38/4324	Granted	MT JUMBO EAST	100%	100%
WA	P38/4346	Granted	LADY JULIE	100%	100%
WA	P38/4379	Granted	LADY JULIE	100%	100%
WA	P38/4380	Granted	LADY JULIE	100%	100%
WA	P38/4381	Granted	LADY JULIE	100%	100%
WA	P38/4382	Granted	LADY JULIE	100%	100%
WA	P38/4383	Granted	LADY JULIE	100%	100%
WA	P38/4384	Granted	LADY JULIE	100%	100%
WA	P37/9144	Granted	HOMEWARD BOUND SOUTH	100%	0%
WA	P39/5455	Granted	HOMEWARD BOUND SOUTH	100%	100%
WA	P39/5928	Granted	HOMEWARD BOUND SOUTH	100%	100%
WA	P39/5929	Granted	HOMEWARD BOUND SOUTH	100%	100%
WA	P39/5932	Granted	HOMEWARD BOUND SOUTH	100%	100%
WA	P39/5933	Granted	HOMEWARD BOUND SOUTH	100%	100%
WA	P39/5934	Granted	HOMEWARD BOUND SOUTH	100%	100%
WA	P39/6175	Granted	HOMEWARD BOUND SOUTH	100%	100%
WA	E39/2125	Granted	LITTLE WELL	100%	100%
WA	P39/6134	Granted	LITTLE WELL	100%	100%
WA	P39/6135	Granted	LITTLE WELL	100%	100%
WA	P39/6136	Granted	LITTLE WELL	100%	100%
WA	P39/6137	Granted	LITTLE WELL	100%	100%
WA	P39/6138	Granted	LITTLE WELL	100%	100%
WA	P39/6139	Granted	LITTLE WELL	100%	100%
WA	P39/6140	Granted	LITTLE WELL	100%	100%
WA	P39/6141	Granted	LITTLE WELL	100%	100%
WA	P39/6142	Granted	LITTLE WELL	100%	100%
WA	P39/6143	Granted	LITTLE WELL	100%	100%
WA	P39/6144	Granted	LITTLE WELL	100%	100%
WA	E70/5534	Granted	TRAYNING	100%	100%
WA	E70/5537	Granted	BENJABERRING	100%	100%
WA	E70/5538	Granted	GODDARD	100%	100%
WA	E70/5771	Granted	KORRELOCKING	100%	100%
WA	E70/6304	Granted	TRAYNING WEST	100%	100%
WA	E70/6305	Granted	KOORDA	100%	100%
Tenements acquired in the quarter					
Tenements surrendered in the quarter					