

28 July 2023

## ASX Announcement

# QUARTERLY ACTIVITIES REPORT 30 JUNE 2023

## Highlights

- **Substantial REE anomalies identified following extensive 2023 surface sampling programme at Nolans East Project**
- **Nolans East located some 15km south-east of Nolans Bore, owned by Arafura**
- **Drilling targets to be delineated using surface mapping and other datasets to refine and prioritise surface anomalies**
- **New tenure applied for at the Coomarie Project bringing project area to 1,315km<sup>2</sup>**
- **Desktop targeting at Coomarie identifies a number of priority target areas for initial exploration, with stakeholder engagement ongoing to enable boots on ground**

Bubalus Resources Limited (ASX: BUS) (**Bubalus** or **the Company**) is pleased to report its activities for the June Quarter of 2023.

## Projects Summary & Activities

### Nolans East Project

During the quarter the Company collected 1,517 surface samples at spacings of 400m x 100m and 200m x 100m across the target area at Nolans East. Results from this sampling programme were recently received with 7 large-scale rare earth element (**REE**) anomalies defined, extending those identified previously<sup>1</sup> as well as identifying new anomalies along trend. The anomaly initially sampled by the Company<sup>1</sup> now measures 2.4km x 1.3km, with the aggregate strike length of all anomalies over 5km in length. The anomalies lie along a WNW-ESE trend, consistent with the Company's previous interpretation (Figure 1).

Nolans East is located 15km south east of the Nolans Bore deposit owned by Arafura Resources Limited (**Arafura**) (Figures 2 and 3). A Mineral Resource of 56 million tonnes at an average grade of 2.6% total rare earth oxides (**TREO**), including a high proportion of neodymium-praesidium oxides ( $\text{Nd}_2\text{O}_3 + \text{Pr}_6\text{O}_{11}$ , **NdPr**), and 11% phosphate ( $\text{P}_2\text{O}_5$ ) has been defined by Arafura at Nolans Bore<sup>2</sup>. Importantly, high value NdPr averages 22% of the TREO content in the Nolans East surface samples (Appendix 1), a similar content to that reported at Nolans Bore (26%<sup>2</sup>).

<sup>1</sup> ASX Announcement 24 January 2023

<sup>2</sup> <https://www.arultd.com/projects/nolans.html> ; also refer ARU.ASX Announcement 7 June 2017.

Nolans Bore is a complex stockwork vein-style deposit with mineralisation occurring in two stages (1) massive to granular fluorapatite with inclusions of REE silicates, phosphates and (fluoro) carbonates, and (2) calcite-allanite with accessory REE-bearing phosphate and (fluoro) carbonate minerals that vein and brecciate the earlier stage<sup>3</sup>. Nolans Bore was discovered by mapping and sampling of these veins at surface. At Nolans East, the project area is over 90% covered with shallow sand cover with limited outcrop<sup>4</sup>, hence the use of surface sampling as an initial exploration tool.

Sampling encountered a range of regolith settings, from washplain and sandplain to lithic/stoney pediment and subcrop. The next step is to carry out “levelling” of the raw assay data to enhance anomalies from regolith settings which are likely to provide a more subdued response. In addition rockchip data collected from around the project area will be used to try and characterise the likely source of the REE anomalies, allowing further refinement of these targets ahead of drilling.

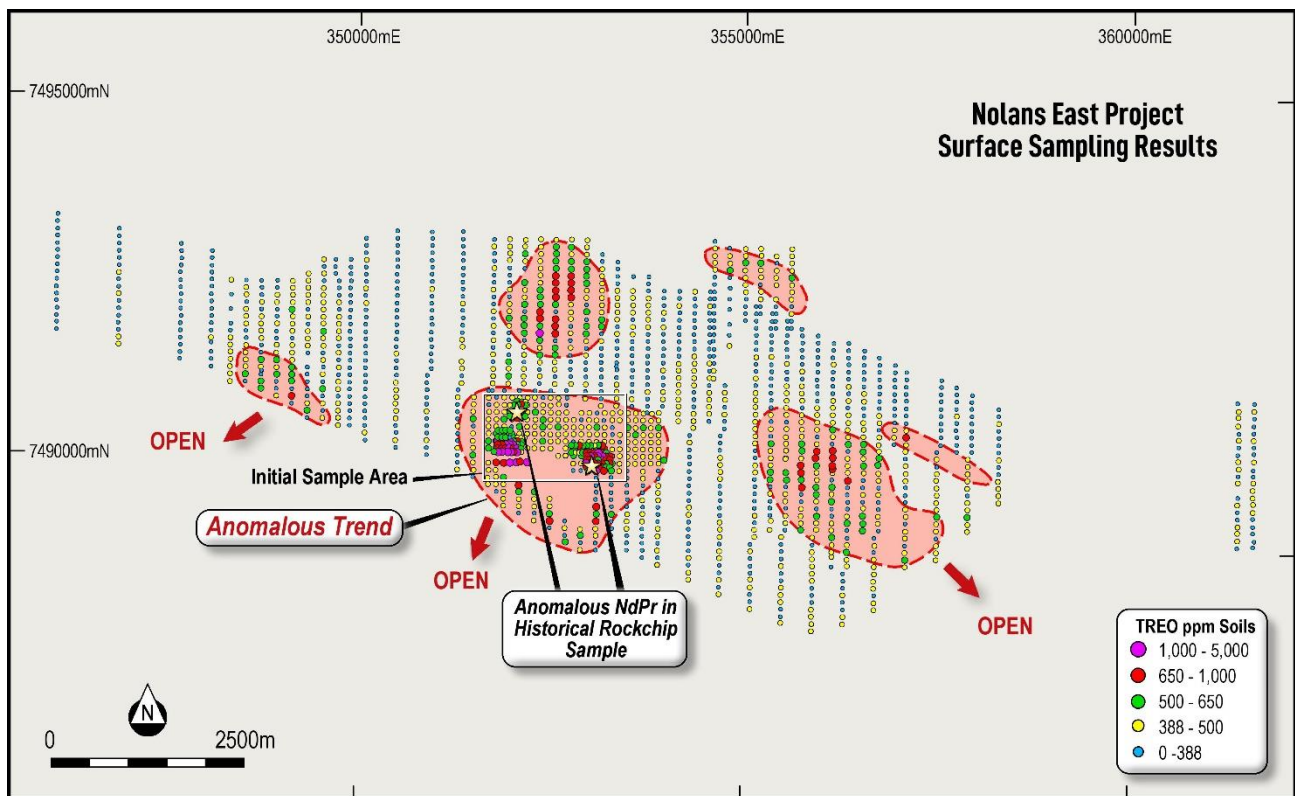
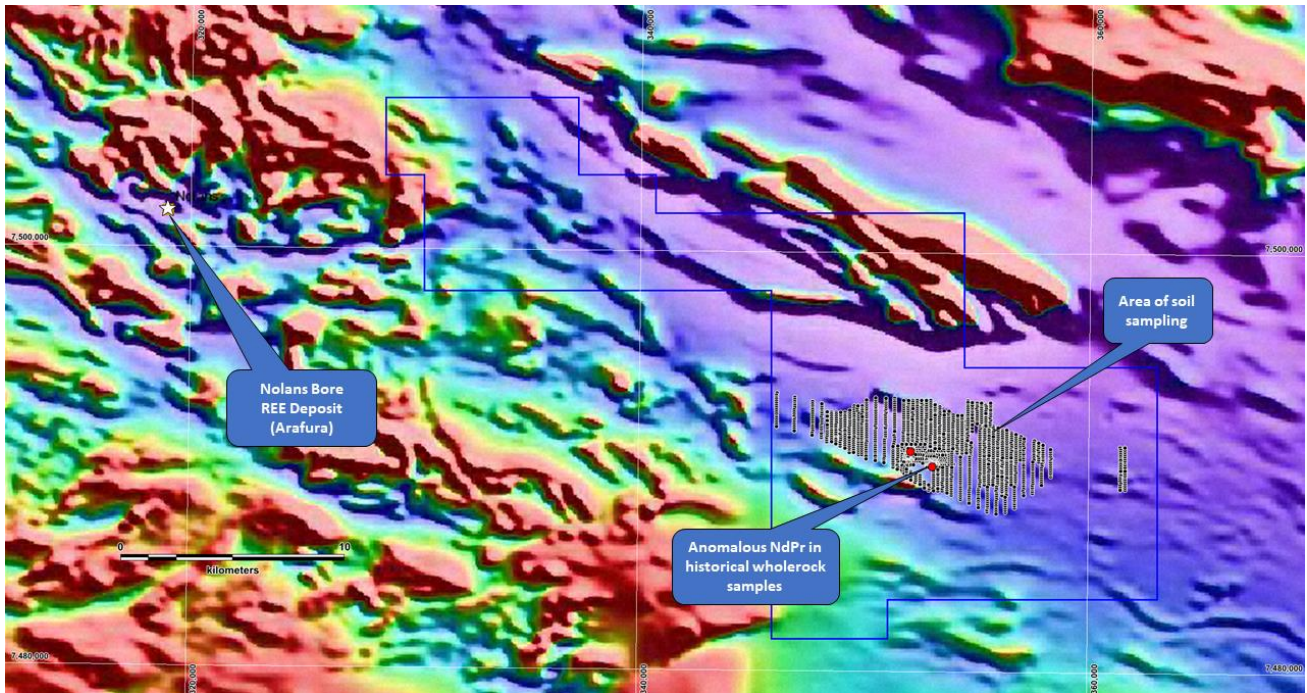


Figure 1: Results from surface sampling at Nolans East Project.

<sup>3</sup> Refer Huston, D.L., Maas, R., Cross, A. et al. The Nolans Bore rare-earth element-phosphorus-uranium mineral system: geology, origin and post-depositional modifications. *Miner Deposita* 51, 797–822 (2016). Also Independent Geologists Report, ASX Announcement 11 October 2022.

<sup>4</sup> Refer Independent Geologists Report, ASX Announcement 11 October 2022.



**Figure 2:** Location of soil sampling at the Nolans East Project over magnetics (TMI – NTGS data). Location of the Nolans Bore Deposit (owned by Arafura) also shown.

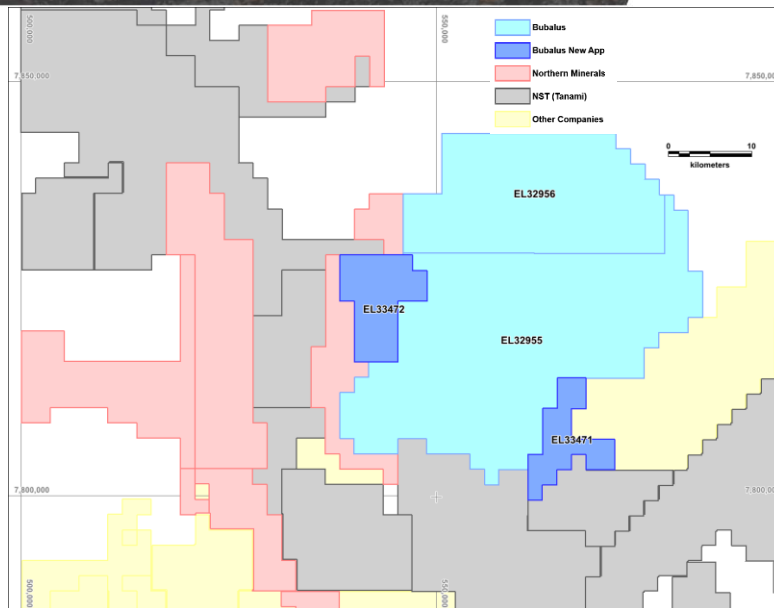
## Coomarie Project

Earlier this year the Company engaged Southern Geoscience to acquire and reprocess available geophysical data across the Coomarie Dome with the aim of delineating targets for initial work. This targeting exercise was expanded to produce a geological interpretation for the project area specifically focussed on delineating the granitic margin and cross cutting structures. REE mineralisation within the Tanami Region is hosted at unconformities between older metamorphic rocks associated with granitic intrusions and younger sediments (for example Browns Ridge (ASX.NTU)<sup>5</sup> and Watts Ridge-Castella (ASX.PVW)<sup>6</sup>). Mineralisation is often controlled by faults which cross cut the unconformity and are interpreted to have controlled fluid flow. A number of targets have been identified in the review and will be the focus of detailed planning ahead of on ground exploration later in 2023.

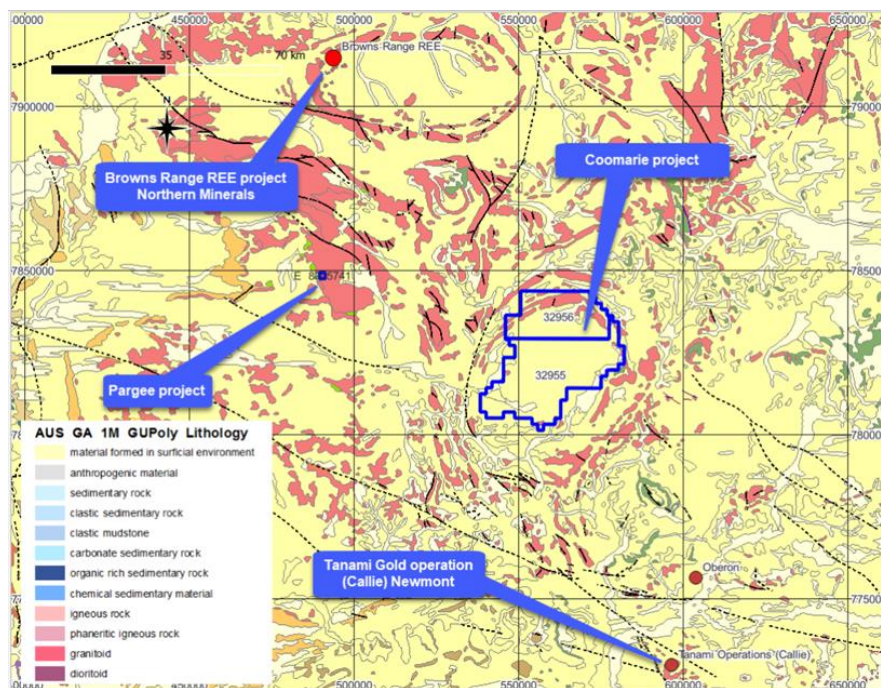
During the targeting exercise completed in 1H 2023 vacant ground surrounding the Coomarie Project was identified. The Company lodged applications for these areas which are denoted EL33471 and EL33472 (Figure 3). The Company has recently been granted consent to negotiate with the Land Council representing the Aboriginal Traditional Owners for the area in which EL33471 and EL33472 falls. The Company has already commenced this process in relation to EL32955 however this process is expected to take several months and include an On Country Meeting with representatives of the Land Council and the Traditional Owners.

<sup>5</sup> NTU.ASX Announcement 9 June 2022 (Corporate Presentation)

<sup>6</sup> PVW.ASX Announcement 1 November 2022 (Presentation – Australian Rare Earth Conference)



**Figure 3.** Tenure surrounding the Coomarie Project showing new applications.



**Figure 4.** Location of Coomarie Project relative to major REE projects in the region over regional scale outcrop geology (Source – Geoscience Australia).<sup>7</sup>

The Coomarie Project is located approximately ~600km from Alice Springs, near the border with Western Australia and Northern Territory (Figure 4). Due to the location and logistics of exploration at Coomarie, as well as the current focus on exploration at Nolans East, the Board of Bubalus has determined it better to carry out a larger field programme across the broader Coomarie project rather than expend resources to commence a smaller programme on its granted tenement EL32956 ahead of these negotiations.

<sup>7</sup> Refer Independent Geologists Report (ASX Announcement 11 October 2022).

## Pargee Project

The Pargee Project is located 70km west of the Coomarie Project along the Tanami Road and then 50km north of the Tanami Road. The Project is located towards the western end of the Granites – Tanami Inlier, which is a highly deformed and metamorphosed, Palaeoproterozoic block of rocks approximately 250km long and 100km wide. Most of the area of the Pargee Project is interpreted to be underlain by lithologies of the Killi to the east and Lower Stubbins Formation to the west as well as the Upper Stubbins Formation and a folded dolerite unite in the centre.

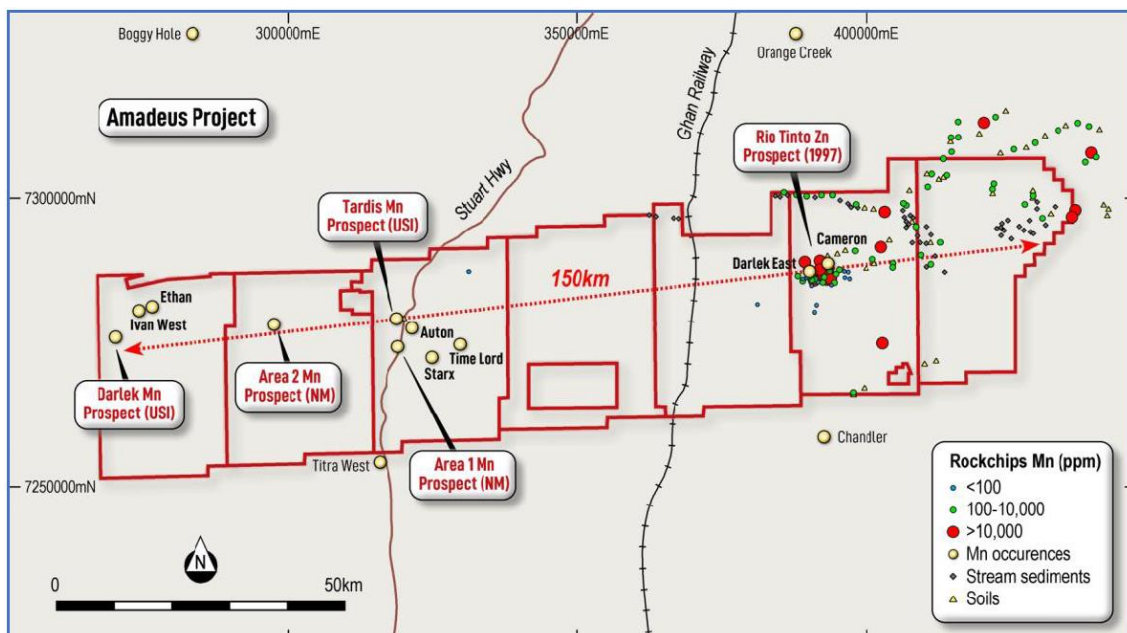
There has been no recorded exploration and mineralisation over the Pargee Project. During the Quarter activities comprised finalising an agreement with the Traditional Owners of the land within which the Pargee Project falls.

## Amadeus Project

The Amadeus Project hosts numerous occurrences of outcropping manganese mineralisation (refer Figure 5)<sup>8</sup>. While these have been extensively mapped and sampled by previous explorers only the Tardis project has been tested by drilling.

Exploration at Amadeus during the Quarter focussed on target ranking, work programme design and stakeholder engagement. The Company has commenced the approvals process for drilling at the Amadeus Project and plans to commence drilling later in CY2023, provided all relevant stakeholders provide their consent. A field reconnaissance programme across the Amadeus Project in late 2022 confirmed good access to the project area and regional infrastructure to support drilling.

The Amadeus Project also hosts a number of targets prospective for base metal mineralisation, specifically zinc, copper and cobalt, which are the subject of ongoing work.



**Figure 5:** Location of Amadeus Project (Prospects defined to date (Mn >1% highlighted as red dots)).

<sup>8</sup> Refer Independent Geologists Report (ASX Announcement 11 October 2022).

## Cash Position

Bubalus held cash reserves at the end of quarter of approximately \$3.9 million.

## Shareholder Information

As at 30 June 2023, the Company had 423 shareholders and 33,661,750 ordinary fully paid shares on issue with the top 20 shareholders holding 51.71% of the total issued capital.

## ASX ADDITIONAL INFORMATION

### Finance and Use of Funds

Pursuant to the requirements of Listing Rule 5.3.1: Exploration and Evaluation Expenditure during the Quarter was \$197,966. Full details of exploration activity during the Quarter are set out in this report.

Pursuant to the requirements of Listing Rule 5.3.2: There were no substantive mining production and development activities during the Quarter.

Pursuant to the requirements of Listing Rule 5.3.5: Payments to related parties of the Company and their associates during the Quarter was \$48,159. The Company advises that this relates to director's fees and consulting services. As per ASX Listing Rule 5.3.4 the following expenditures have occurred:

Item	Current Quarter \$	Year-to-Date \$	Prospectus dated 24 August 2022* \$
Exploration - Amadeus Project	3,952	110,334	1,240,000
Exploration - Nolans East Project	184,390	253,856	810,000
Exploration - Coomarie Project	7,904	23,264	690,000
Exploration - Pargee Project	1,720	9,728	60,000
Cash Consideration Paid to Vendors	-	103,495	105,286
Expenses of the Offer	-	585,154	571,884
Corporate and Administration Costs	89,553	322,137	603,400
Working Capital	(187)	5,526	1,223,981

\*Costs per the prospectus are over the first two years following admission of the Company to the official List of ASX.

## TENEMENT TABLE AS AT 30 JUNE 2023

Tenement ID	Project	Status	Holder(s)*	Interest at End of Quarter
EL32796	Amadeus	Granted	Tomorrow Minerals Pty Ltd	100%
EL32797	Amadeus	Granted	Tomorrow Minerals Pty Ltd	100%
EL32798	Amadeus	Granted	Tomorrow Minerals Pty Ltd	100%
EL32799	Amadeus	Granted	Tomorrow Minerals Pty Ltd	100%
EL32800	Amadeus	Granted	Tomorrow Minerals Pty Ltd	100%
EL32801	Amadeus	Granted	Tomorrow Minerals Pty Ltd	100%
EL32802	Amadeus	Granted	Tomorrow Minerals Pty Ltd	100%
EL32955	Coomarie	Application	Jarrah Nia Exploration Pty Ltd	-
EL32956	Coomarie	Granted	Jarrah Nia Exploration Pty Ltd	100%
EL33471	Coomarie	Application	Bubalus Resources Ltd	-
EL33472	Coomarie	Application	Bubalus Resources Ltd	-
EL32957	Nolans East	Granted	Jarrah Nia Exploration Pty Ltd	100%
E80/5741	Pargee	Application	Jarrah Nia Exploration Pty Ltd	-

*\* Tomorrow Minerals Pty Ltd and Jarrah Nia Exploration Pty Ltd are 100% owned subsidiaries of Bubalus Resources Limited.*

This announcement has been authorised by the Board of Directors of Bubalus Resources Limited.

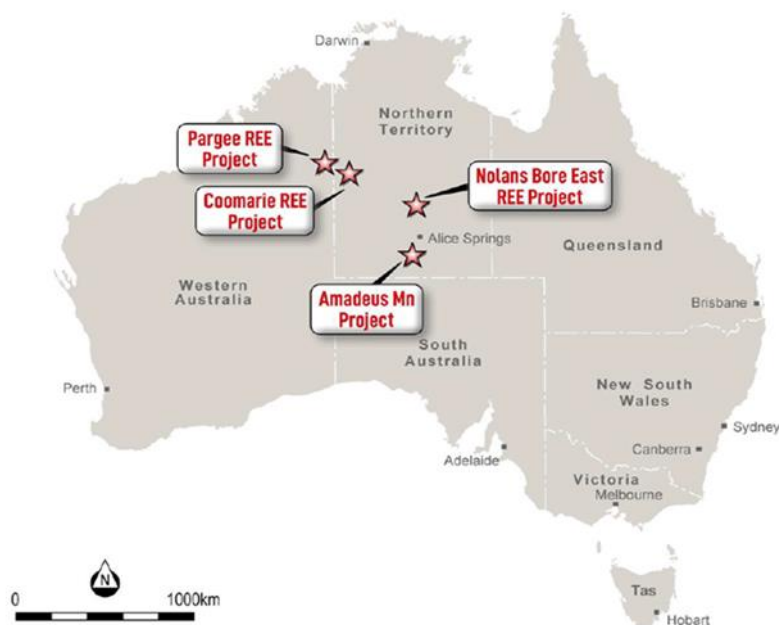
**For more information, please contact:**

Mr Alec Pismiris  
M: +61 402 212 532

Level 2, 22 Mount Street  
Perth WA 6000

PO Box 7054, Cloisters Square  
Perth WA 6850  
P: +61 8 6188 8181  
E: [admin@bubalusresources.com.au](mailto:admin@bubalusresources.com.au)  
W: [www.bubalusresources.com.au](http://www.bubalusresources.com.au)

## ABOUT BUBALUS RESOURCES



Bubalus has four projects, the Amadeus Project (prospective for Manganese), the Coomarie Project (prospective for Heavy Rare Earths), the Nolans East Project (prospective for Light Rare Earths) and the Pargee Project (prospective for Heavy Rare Earths), which are located in premier geological provinces in the Northern Territory and Western Australia:

**Amadeus Project** (Mn) - Significant land package with 150kms of strike containing outcropping high grade manganese covering 5,436km<sup>2</sup>, located 125km south of Alice Spring where historical exploration has identified 11 manganese occurrences, along with cobalt and Ni-Zn-Cu also identified.

**Nolans East Project** (Light REEs) - The project covers 380km<sup>2</sup> of the Arunta Province, analogous to Nolan's Bore light rare earth deposit and is prospective for light rare earths, located only 15kms east of Arafura's (ASX:ARU) 56Mt NPV \$1.011Bn light rare earth deposit.

**Coomarie Project** (Heavy REEs) - The project covers 1,315 km<sup>2</sup> and presents as a geological analogue to Browns Dome, host to Northern Minerals' (ASX:NTU) Browns Range heavy rare earths deposit where mineralisation is hosted on margins of granite dome intrusive where the unconformity between Gardiner Sandstone and Browns Range Metamorphics exist and located in the Tanami Region.

**Pargee Project** (Heavy REEs) - The project is prospective for heavy rare earths and located 30kms from PWV Resources' (ASX:PVW) Watts Rise heavy rare earths discovery.



## COMPETENT PERSONS STATEMENT

Information in this report relating to Exploration Results is based on information compiled, reviewed and assessed by Mr. Bill Oliver, who is a Member of the Australasian Institute of Mining and Metallurgy and the Australian Institute of Geoscientists. Mr. Oliver is a Director of Bubalus Resources and has sufficient experience which is relevant to the style of mineralisation and type of deposit under consideration and to the activity which he is undertaking to qualify as a Competent Person as defined by the 2012 Edition of the Australasian Code for reporting of Exploration Results, Mineral Resources and Ore Reserves (JORC Code). Mr. Oliver consents to the inclusion of the information in the form and context in which it appears.

Some of the information in this Announcement is extracted from the Independent Geologist's Report contained within the Prospectus released to the ASX on 11 October 2022 and available to view on the Bubalus Resources Limited website, [www.bubalusresources.com.au](http://www.bubalusresources.com.au) or on the ASX website, [www.asx.com.au](http://www.asx.com.au) under the ticker code BUS.

The Company confirms that it is not aware of any new information or data that materially affects the information included in the original market announcement. The Company confirms that the form and context in which the Competent Person's findings are presented have not been materially modified from the original market announcement.

## Appendix 5B

### Mining exploration entity or oil and gas exploration entity quarterly cash flow report

Name of entity

BUBALUS RESOURCES LIMITED

ABN

17 654 970 751

Quarter ended ("current quarter")

30 June 2023

Consolidated statement of cash flows	Current quarter \$A'000	Year to date (12 months) \$A'000
<b>1. Cash flows from operating activities</b>		
1.1 Receipts from customers	-	-
1.2 Payments for		
(a) exploration & evaluation	-	-
(b) development	-	-
(c) production	-	-
(d) staff costs	(36)	(102)
(e) administration and corporate costs	(54)	(433)
1.3 Dividends received (see note 3)	-	-
1.4 Interest received	19	27
1.5 Interest and other costs of finance paid	-	-
1.6 Income taxes paid	-	-
1.7 Government grants and tax incentives	-	-
1.8 Other (GST movements)	(18)	(32)
<b>1.9 Net cash from / (used in) operating activities</b>	<b>(89)</b>	<b>(540)</b>

<b>2. Cash flows from investing activities</b>		
2.1 Payments to acquire or for:		
(a) entities	-	-
(b) tenements	-	-
(c) property, plant and equipment	-	-
(d) exploration & evaluation	(198)	(501)
(e) investments	-	-
(f) other non-current assets	-	-

## Mining exploration entity or oil and gas exploration entity quarterly cash flow report

Consolidated statement of cash flows		Current quarter \$A'000	Year to date (12 months) \$A'000
2.2	Proceeds from the disposal of:		
	(a) entities	-	-
	(b) tenements	-	-
	(c) property, plant and equipment	-	-
	(d) investments	-	-
	(e) other non-current assets	-	-
2.3	Cash flows from loans to other entities	-	-
2.4	Dividends received (see note 3)	-	-
2.5	Other (security deposits paid)	-	-
<b>2.6</b>	<b>Net cash from / (used in) investing activities</b>	<b>(198)</b>	<b>(501)</b>
<b>3.</b>	<b>Cash flows from financing activities</b>		
3.1	Proceeds from issues of equity securities (excluding convertible debt securities)	-	5,000
3.2	Proceeds from issue of convertible debt securities	-	-
3.3	Proceeds from exercise of options	-	-
3.4	Transaction costs related to issues of equity securities or convertible debt securities	-	(373)
3.5	Proceeds from borrowings	-	-
3.6	Repayment of borrowings	-	-
3.7	Transaction costs related to loans and borrowings	-	-
3.8	Dividends paid	-	-
3.9	Other (provide details if material)	-	-
<b>3.10</b>	<b>Net cash from / (used in) financing activities</b>	<b>-</b>	<b>4,627</b>
<b>4.</b>	<b>Net increase / (decrease) in cash and cash equivalents for the period</b>		
4.1	Cash and cash equivalents at beginning of period	4,178	305
4.2	Net cash from / (used in) operating activities (item 1.9 above)	(89)	(540)
4.3	Net cash from / (used in) investing activities (item 2.6 above)	(198)	(501)
4.4	Net cash from / (used in) financing activities (item 3.10 above)	-	4,627

## Mining exploration entity or oil and gas exploration entity quarterly cash flow report

<b>Consolidated statement of cash flows</b>		<b>Current quarter \$A'000</b>	<b>Year to date (12 months) \$A'000</b>
4.5	Effect of movement in exchange rates on cash held	-	-
<b>4.6</b>	<b>Cash and cash equivalents at end of period</b>	<b>3,891</b>	<b>3,891</b>

<b>5.</b>	<b>Reconciliation of cash and cash equivalents</b> at the end of the quarter (as shown in the consolidated statement of cash flows) to the related items in the accounts	<b>Current quarter \$A'000</b>	<b>Previous quarter \$A'000</b>
5.1	Bank balances	891	178
5.2	Call deposits	3,000	4,000
5.3	Bank overdrafts	-	-
5.4	Other (provide details)	-	-
<b>5.5</b>	<b>Cash and cash equivalents at end of quarter (should equal item 4.6 above)</b>	<b>3,891</b>	<b>4,178</b>

<b>6.</b>	<b>Payments to related parties of the entity and their associates</b>	<b>Current quarter \$A'000</b>
6.1	Aggregate amount of payments to related parties and their associates included in item 1	39
6.2	Aggregate amount of payments to related parties and their associates included in item 2	9

*Note: if any amounts are shown in items 6.1 or 6.2, your quarterly activity report must include a description of, and an explanation for, such payments.*

## Mining exploration entity or oil and gas exploration entity quarterly cash flow report

<b>7. Financing facilities</b>	<b>Total facility amount at quarter end \$A'000</b>	<b>Amount drawn at quarter end \$A'000</b>
<i>Note: the term "facility" includes all forms of financing arrangements available to the entity. Add notes as necessary for an understanding of the sources of finance available to the entity.</i>		
7.1 Loan facilities	-	-
7.2 Credit standby arrangements	-	-
7.3 Other (please specify)	-	-
<b>7.4 Total financing facilities</b>	-	-
<b>7.5 Unused financing facilities available at quarter end</b>		-
7.6 Include in the box below a description of each facility above, including the lender, interest rate, maturity date and whether it is secured or unsecured. If any additional financing facilities have been entered into or are proposed to be entered into after quarter end, include a note providing details of those facilities as well.		
N/A		

<b>8. Estimated cash available for future operating activities</b>	<b>\$A'000</b>
8.1 Net cash from / (used in) operating activities (item 1.9)	(89)
8.2 (Payments for exploration & evaluation classified as investing activities) (item 2.1(d))	(198)
8.3 Total relevant outgoings (item 8.1 + item 8.2)	(287)
8.4 Cash and cash equivalents at quarter end (item 4.6)	3,891
8.5 Unused finance facilities available at quarter end (item 7.5)	-
8.6 Total available funding (item 8.4 + item 8.5)	3,891
<b>8.7 Estimated quarters of funding available (item 8.6 divided by item 8.3)</b>	13.56
<i>Note: if the entity has reported positive relevant outgoings (ie a net cash inflow) in item 8.3, answer item 8.7 as "N/A". Otherwise, a figure for the estimated quarters of funding available must be included in item 8.7.</i>	
8.8 If item 8.7 is less than 2 quarters, please provide answers to the following questions:	
8.8.1 Does the entity expect that it will continue to have the current level of net operating cash flows for the time being and, if not, why not?	
Answer: N/A	
8.8.2 Has the entity taken any steps, or does it propose to take any steps, to raise further cash to fund its operations and, if so, what are those steps and how likely does it believe that they will be successful?	
Answer: N/A	

## Mining exploration entity or oil and gas exploration entity quarterly cash flow report

8.8.3 Does the entity expect to be able to continue its operations and to meet its business objectives and, if so, on what basis?

Answer: N/A

Note: where item 8.7 is less than 2 quarters, all of questions 8.8.1, 8.8.2 and 8.8.3 above must be answered.

## Compliance statement

- 1 This statement has been prepared in accordance with accounting standards and policies which comply with Listing Rule 19.11A.
- 2 This statement gives a true and fair view of the matters disclosed.

Date: 28 July 2023

Authorised by: By the Board of Bubalus Resources Limited  
(Name of body or officer authorising release – see note 4)

## Notes

1. This quarterly cash flow report and the accompanying activity report provide a basis for informing the market about the entity's activities for the past quarter, how they have been financed and the effect this has had on its cash position. An entity that wishes to disclose additional information over and above the minimum required under the Listing Rules is encouraged to do so.
2. If this quarterly cash flow report has been prepared in accordance with Australian Accounting Standards, the definitions in, and provisions of, *AASB 6: Exploration for and Evaluation of Mineral Resources* and *AASB 107: Statement of Cash Flows* apply to this report. If this quarterly cash flow report has been prepared in accordance with other accounting standards agreed by ASX pursuant to Listing Rule 19.11A, the corresponding equivalent standards apply to this report.
3. Dividends received may be classified either as cash flows from operating activities or cash flows from investing activities, depending on the accounting policy of the entity.
4. If this report has been authorised for release to the market by your board of directors, you can insert here: "By the board". If it has been authorised for release to the market by a committee of your board of directors, you can insert here: "By the [name of board committee – eg *Audit and Risk Committee*]". If it has been authorised for release to the market by a disclosure committee, you can insert here: "By the Disclosure Committee".
5. If this report has been authorised for release to the market by your board of directors and you wish to hold yourself out as complying with recommendation 4.2 of the ASX Corporate Governance Council's *Corporate Governance Principles and Recommendations*, the board should have received a declaration from its CEO and CFO that, in their opinion, the financial records of the entity have been properly maintained, that this report complies with the appropriate accounting standards and gives a true and fair view of the cash flows of the entity, and that their opinion has been formed on the basis of a sound system of risk management and internal control which is operating effectively.