

QUARTERLY REPORT

For the period ending June 2023

HIGHLIGHTS

Gulf Energy Limited (ASX: GGE) (Grand Gulf or the Company) is pleased to provide shareholders with the following summary of its activities during the June 2023 quarter.

Independent Expert Review Confirms Helium Flow Potential

- Blade Energy Partners (Blade) review confirmed Jesse-1A helium flow potential in excess of 5 million cubic feet per day (mmscfd) of raw gas from the upper Leadville.
- Analysis de-risks reservoir deliverability for Jesse-3 and provides exciting upside for Jesse-1A well where an inexpensive workover (<US\$1m) could potentially yield significant value.

Jesse-2 Extends Jesse Discovery, Flows 0.9% Helium to Surface

- 192-foot gross gas column extending Jesse helium discovery, flowing up to 0.9% helium to surface demonstrating helium is pervasive over the project.
- Jesse-2 encountered lower secondary porosity than that observed in Jesse-1A / Doe Canyon field and has been suspended with ongoing studies on well remediation/stimulation to be undertaken post drilling of Jesse-3.

Bonus McCracken Bonus Target Adds 1.8 BCF taking Prospective Helium Resource to 12.7 BCF¹

- Independent expert Sproule International (“Sproule”) performed due diligence on a resource estimation of the McCracken formation adding 1.8 billion cubic feet (BCF) to the prospective helium resource, taking the gross P50 total including the Mississippian Leadville to 12.7 BCF.
- The Devonian McCracken is a proven helium producing formation in the region and represents a highly prospective independent bonus target to be evaluated in the forthcoming Jesse-3 helium well and future well operations such as the Jesse-1A re-completion.

Jesse-3 Targets Structural High and Reservoir with Well Control, Q3/Q4 Spud Planned

- Jesse-3 location targets a structural seismic high proximal (1300 feet) to the Redd-1 well.
- Potential to be 70 feet high to Jesse-1A maximising reservoir in the gas column and stand-off to the gas/water contact mitigating potential water ingress.
- Redd-1 tested non-flammable gas in the primary Leadville target with 140 gross feet of porous dolomitic reservoir and zones with evidence of strong hydrothermal dolomitization and secondary vugular porosity.
- Redd-1 petrophysical logs indicate porous gas filled pay in both primary Leadville target and the secondary McCracken target.
- Proximal well control de-risks reservoir development and structure at the Jesse-3 location.
- Jesse-3 is currently subject to permitting with a planned Q3/Q4 spud date.

Red Helium Project Working Interest:

- Working interest from 70% to 77.5% in its majority-owned incorporated JV company Valence Resources LLC (“Valence”) which operates the Red Helium project after meeting the earn-in requirements for the second well under the operating agreement.

¹ See Tables 1, 2 & 3 and accompanying notes



Red Helium Project Updates:

Independent Expert Review Confirms Jesse-1A Helium Flow Potential²

Blade Energy Partners (Blade), an independent international engineering contractor with extensive petroleum engineering, carbonate completion and stimulation experience performed an engineering review of Grand Gulf’s Jesse-1A and Jesse-2 information.

Blade’s evaluation of provided drill stem test results and modelling of the upper Leadville reservoir in Jesse-1A calculated potential flow rates of 5 million standard cubic feet per day (MMscfd) of raw gas or greater subject to successful isolation and stimulation.

Blade’s assessment of build-up data provides exciting upside for the Company’s Jesse-1A well where an inexpensive workover focused on zonal isolation and stimulation could potentially yield significant value and de-risks reservoir deliverability for Jesse-3.

As a result of Blade’s review, the upper Leadville in the Jesse-1A wellbore has been identified and prioritised for recompletion following the forthcoming Jesse-3 well in Q3/Q4 2023.

The currently proposed recompletion of the Jesse-1A wellbore would be to case and perforate the upper and middle Leadville with focussed zonal isolation and stimulation through matrix acidization before flow-testing and preparations to tie-in for production. The well also has the potential to be deepened to include testing underlying units, such as the Devonian McCracken Formation, which is a proven helium producer regionally. It is estimated the above work could be undertaken for less than US\$1m.

Bonus McCracken Formation Adds 1.8 BCF to Prospective Helium Resource³

Sproule International (“Sproule”) independently performed due diligence on an assessment of the McCracken formation has generated a gross P50 helium Prospective Resource of 1.8 billion cubic feet (BCF) (1.3 BCF net to incorporated JV company – Valence Resources) – See Table 3. Sproule is an independent resources and reserves certification specialist with extensive experience in helium and the Paradox Basin.

The total McCracken Prospective Resource across the entire Jesse structure (best estimate – P50) is 4.9 BCF, with a high estimate (P10) of 13.5 BCF. The McCracken, a proven helium producing formation in the region, is de-risked by the historic Redd-1 well drilled on the Jesse structure with 90 gross feet and 26 net feet of gas pay on logs.

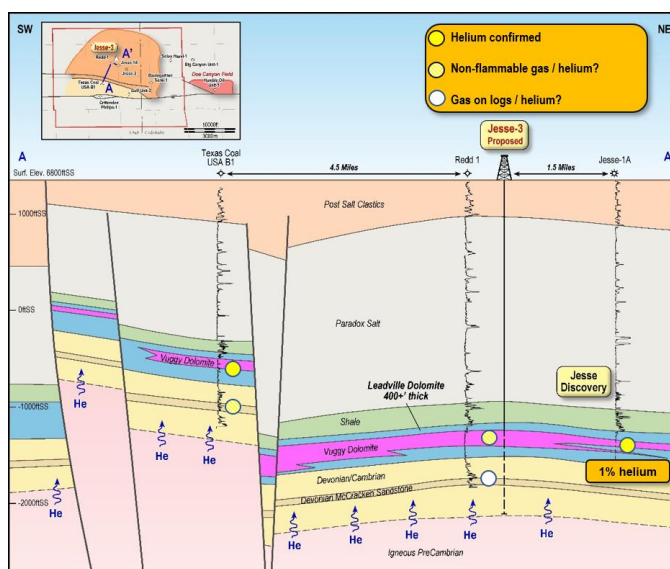


Figure 1: Jesse-3 well location targets a structural high proximal to the historic Redd-1 well which had an at least 140 gross feet section of porous dolomitic Leadville reservoir with evidence of strong hydrothermal dolomitization and gas on logs in the McCracken

² ASX Announcement 2 June 2023 - Independent Review Confirms Helium Flow Potential

³ ASX Announcement 22 June 2023 - Bonus McCracken Adds 1.8BCF to Prospective Helium Resource



The McCracken formation represents a highly prospective bonus independent target to be evaluated in the forthcoming Jesse-3 helium well and future well operations such as the Jesse-1A re-completion. The McCracken Prospective Resource independent to the 10.9 BCF gross P50 Prospective Resource in the primary Leadville dolomite target – bringing the gross P50 total for the Red Helium project to 12.7 BCF - see Table 1

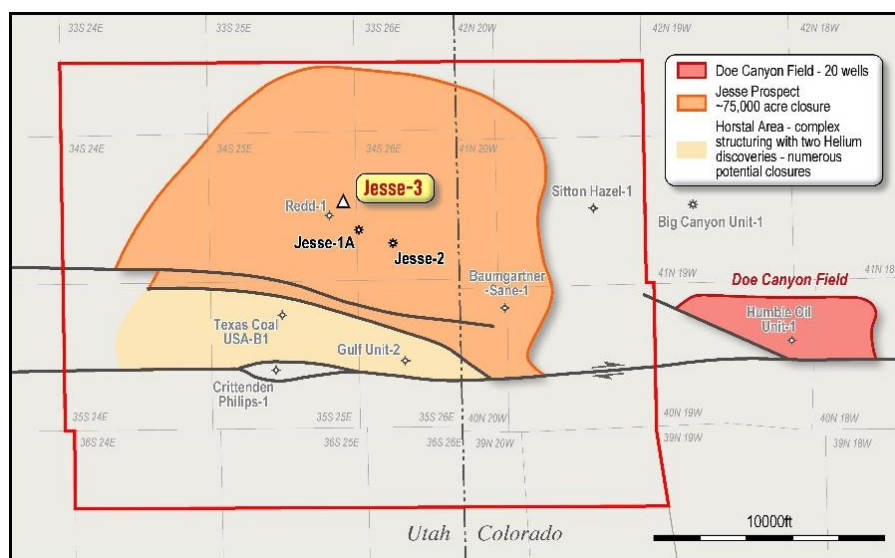


Figure 2: Proposed Jesse-3 well location proximal to the historic Redd-1 well which is structurally high to the Jesse-1A well, with both wells having evidence of vugular dolomitic secondary porosity

Optimised Jesse-3 Location Targets Structure and Reservoir planned for Q3/Q4 Spud⁴

The Company has performed a full re-calibration and mapping of 2D seismic data and petrophysical logs integrating the new data obtained from the Jesse-2 with Jesse-1A and historic well results. Based on the results, an optimised location was selected from four mature drillable candidate locations. The selected Jesse-3 location is proximal (1,300 feet) to the historic Redd-1 well and positioned on a seismic high. Preparations for Jesse-3 are advanced and currently subject to permitting with a planned Jesse-3 Q3/Q4 2023 spud date.

Jesse-3 Rationale: Structural High on Existing Seismic

Drilled in 1952, Redd-1 is interpreted as approximately 20 feet structurally high to the Jesse-1A well. Based on the 2D seismic, there is a significant consistent structural high in the seismic in both time and depth proximal to Redd-1. The proposed Jesse-3 location has the potential to be up to 50 feet higher than Redd-1 and up to 70 feet higher than Jesse-1A based on a seismic line close to Redd-1.

As per standard upstream exploration and production practice, targeting a structural high on seismic giving the potential for greater stand-off to the gas/water contact, reducing risk of water ingress, and potential for greater net reservoir in the gas column. Uncertainty in seismic interpretation and time-depth conversion at the Jesse-3 location are reduced due to the proximity of Redd-1 well control. Jesse-3 is located optimally to test the McCracken formation.

Jesse-3 Rationale: Reservoir Definition through Well Control

An understanding of the heterogeneity of carbonate reservoirs increases dramatically with data, with the Company selecting a high-graded location for the Jesse-3 well focusing on de-risked reservoir development and deliverability with proximal well control.

The petrophysical and mud logs at Redd-1 indicate several gas filled zones across at least 140 gross feet of porous dolomitic reservoir evidence of strong hydrothermal dolomitization and secondary vugular porosity in the Leadville and gas pay on logs in the McCracken. The 1952 vintage of Redd-1 wireline logs, in particular the neutron log, provide porosity control and potential upside on modern logs. Redd-1 tested non-flammable gas (possibly helium?) in multiple

⁴ ASX Announcement 8 June 2023 - Optimised Jesse-3 Location Targets Structure and Reservoir

zones within the Mississippian Leadville.

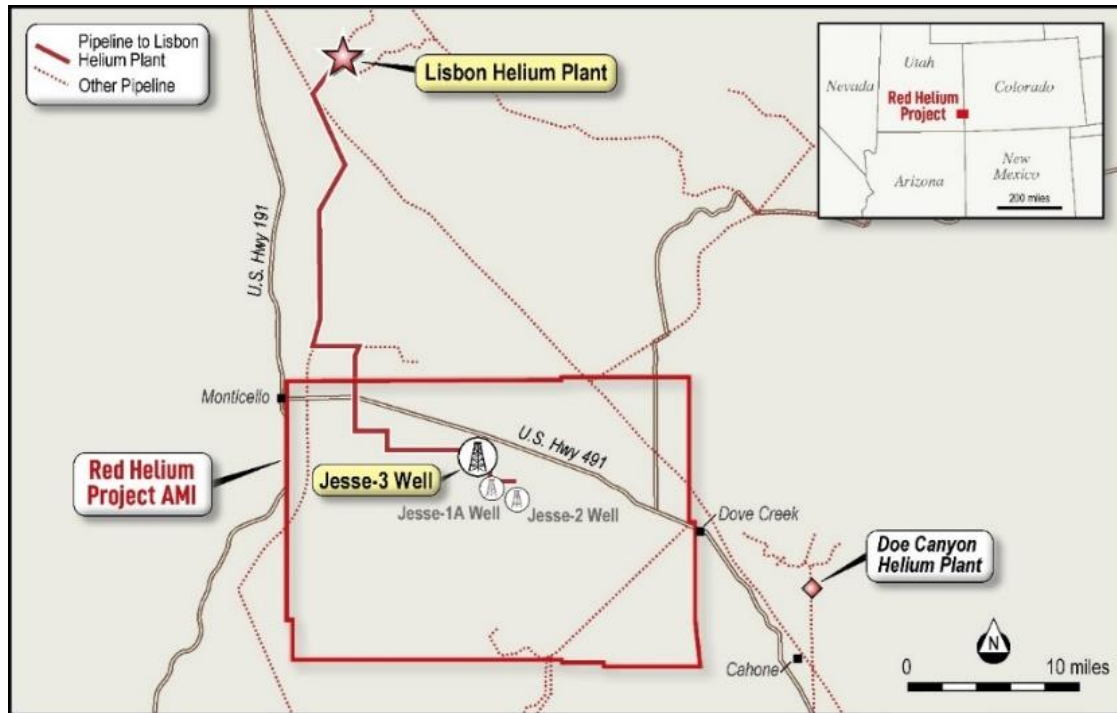


Figure 3: Jesse-3 location in the Red Helium project AMI with local pipelines / gas transport route to the Lisbon Helium Plant.

Jesse-2 Extends Jesse Helium Discovery, Flows up to 0.9% Helium to Surface⁵

Jesse-2 intersected a 192 foot gross gas column with helium concentrations of up to 0.9% helium extending the Jesse Discovery 1.5 miles from the Jesse-1A location, and proving helium is pervasive over the Red Helium project.

Underbalanced drilling operations successfully met all technical delivery requirements and allowed for the testing while drilling of geologic gas flow to surface with no observed water production.

Jesse-2 encountered lower secondary porosity than that observed in Jesse-1A and the Company is also currently evaluating potential remediation/stimulation options for the Jesse-2 well based on feedback from Blade. These include a combination of matrix acidization and the potential to drill a short radius horizontal well for less than US\$1m

The Jesse-2 result is consistent with the nearby analogue Doe Canyon Helium Field where a limited number of wells (3 out of more than 20 over the life of the field) encounter limited secondary porosity development due to carbonate diagenetic heterogeneity. The observed reservoir development at the Redd-1 and Jesse-1A wells, and the southern upthrown fault block hosting the Earp prospect which has the historic Texas-Coal-1 and Gulf-2 wells, define a potential reservoir play fairway for the western extent of the Red Helium project independent of the Jesse-2 results.

⁵ ASX Announcement 24 April 2023 - Jesse-2 Flows Helium Gas to Surface, Confirms Discovery

About the Red Helium Project:

The Red Helium Project provides exposure to the burgeoning helium industry in a prolific proven helium-producing region, the Four Corners Area, that comprises:

- 250,713 acre area of mutual interest (AMI) with over 29,000 acres (private leases/Utah state leases) leased in drill-friendly Utah in the heart of the most prolific helium-producing region in the world;
- Geologically analogous to Doe Canyon Field. Doe Canyon is situated 15 miles due east of the Red Helium project, and is currently producing approximately 10,700,000 cubic feet of helium per month, the bulk of which comes from only 7 wells. Air Products (market cap US\$70b) is processing the helium, and it is anticipated that Doe Canyon will ultimately produce 3-5 billion cubic feet of helium. With additional drilling, this resource figure could increase;
- 315 kms of well-placed 2D seismic has been acquired and reprocessed identifying multiple drill targets – and confirming a structural trap 4-5 times larger than the Doe Canyon Field;
- Six historic wells exclusively targeting hydrocarbons were drilled within the project AMI, proving trap, seal, reservoir presence and gas charge and a working helium system, to differing degrees within each prospect. Several wells tested non-flammable gas, the only two analysed for helium confirmed helium presence; and
- 20 miles south of and connected by pipeline to the operational Lisbon Helium Plant (99.9995% purity).

Since acquisition in September 2021 the company has continued to mature the project, including the following milestones:

- Maiden prospective gross project unrisks P50 helium resource of 10.9 billion cubic feet of helium;
- Jesse discovery (Jesse-1A), generally exceeding pre-drill expectation and highlights including:
 - Helium grade of up to 1%. An analogous Doe Canyon well at 1% helium and a raw gas rate of 20 million cubic feet per day would produce 200 thousand cubic feet of helium per day;
 - Productive and well pressured reservoir at 2465 psi on trend with virgin pressure at the neighbouring Doe Canyon.
 - Independent Auditor confirms Jesse helium discovery and maturation from Prospective to Contingent Resource category
 - over 200 feet of gross gas column; and
 - 101 feet of net pay;
- Helium Offtake Agreement with Paradox Resources LLC, a helium refiner and seller owner with extensive helium market experience and connections, and operator of the advanced Lisbon Valley helium plant;
- Strategic Alliance to expand on the Offtake terms and exploit the corporate synergies with Paradox;
- Drilled Jesse-2 flowing up to 0.9% helium to surface confirming a helium discovery in the Jesse Field and extended the proven helium play fairway following a significant 1.5 mile step-out from the Jesse-1A well.
- Matured three new drill locations on the Jesse structure and multiple prospects independent to Jesse, including the drill-ready Earp prospect, with plans to drill a third helium well; and
- Increased Working Interest in the Red Helium Project to 77.5% with a right to earn 85%;
- The Company continues to optimise lease position based on maximizing prospectivity using information gained from the wells to date.



Helium Offtake Agreement (“Offtake”):

Binding offtake executed with helium refiner and seller Paradox Resources LLC (“**Paradox**”) with industry standard 80/20 revenue sharing / allowing near immediate monetisation of a success case well to monetized with minimal time and Capex^{6,7}. The Red Helium project is 20 miles south of and connected by pipeline to the operational Lisbon Helium Plant.

The GPSA represents recognition from Paradox of the significant potential of the Red Helium Project and forms a relationship with a proven helium refiner and seller with deep helium processing and marketing experience. The key terms include an 80/20 industry standard revenue split in favour of the producer (GGE) as well as standard tariffs for gathering, compression and processing.

Paradox owns over 100,000 net acres and operates over 150 wells in the Paradox Basin in the Four Corners Region of Utah, Colorado, New Mexico and Arizona. Paradox is operator of 570 miles of operated gas gathering lines (220 miles of which is wholly owned) with four compression stations that feed directly to the Lisbon Valley Gas Plant.

The advanced Lisbon Valley Gas Plant is comprised of a 60 million cubic feet per day (mmcf) treating plant with a 45 mmcf cryogenic plant capable of liquefaction of 0.5 mmcf of high purity 99.9995% (5 ½ Nines) helium, that attracts premium pricing for advanced applications such as semiconductor, medical, research, space and defense industries. The plant has capacity for another 0.6 mmcf of purified ~99.989% gaseous helium currently sold to multiple suppliers and direct to downstream retail consumers via Paradox’s logistics arm comprising precisely engineered specialist tube trailers.

The Lisbon Plant is also currently sequestering carbon dioxide and is well advanced in the permitting process to qualify for carbon capture tax credits under Section 45Q (Revenue) of the US tax code. The recent Inflation Reduction Act increased the value of carbon dioxide sequestered to \$85 per metric tonne, making it a potential material revenue stream for the Red Helium Project.



Figure 4: Paradox Resources “5.5 Nines” Lisbon Valley Gas Processing Plant.

Strategic Alliance

Grand Gulf entered into a Strategic Alliance (“**Alliance**”) with helium refiner and seller Paradox designed to fast-track and optimise the significant commercial opportunities that exist in the current buoyant helium market⁸. The Alliance is structured to explore mutually commercially advantageous revenue sharing arrangement on such key items as:

- Optimize and prioritize near-term exposure to the burgeoning helium market
- Red Helium Project to be a potential priority supplier to re-start the Paradox liquefier capable of producing high purity 99.9995% helium (“5 ½ Nines”) - which attracts premium pricing
- Collaborative downstream marketing targeting end users of high-purity helium such as semi-conductor manufacturers and the space industry
- Expansion of the terms of the recently executed Offtake agreement to include discoveries after Jesse#1A
- Progress identified CO₂ disposal options with revenue generating potential:
 - i) Expansion of existing carbon sequestration activities at Paradox’s Lisbon Plant to include CO₂ from the Red Helium Project - potentially revenue-generating under Section 45Q of the US Tax Code; and
 - ii) Joint investigation into utilization of Red Helium Project CO₂ for enhanced oil recovery (flooding) from Paradox’s Lisbon Oil Field
- Potential synergistic commercial benefits in assessing corporate opportunities that involve both Paradox assets and the Red Helium Project

⁶ ASX Announcement 16 March 2022 – Helium Offtake Agreement Secured

⁷ ASX Announcement 9 Jan 2023 – Helium Offtake Agreement Secured for Jesse-2

⁸ ASX Announcement 11 April 2022 – Strategic Alliance with Helium Offtake Partner

Prospective Helium Resource

Table 1 - Valence Combined Leadville / McCracken Prospective Resources

Recoverable Helium	1U (P90) (BCF)	2U (P50) (BCF)	3U (P10) (BCF)
Gross to Valence - (28,046 gross acres)	8.1	12.7	17.6
Net to Valence - (18,959 net acres)	5.6	8.7	11.7
Net to GGE - (earning 85% of net Valence)	4.7	7.4	9.9
Red Project Total (Jesse McCracken)	9.3	25.7	71.1

Table 2 - Valence Mississippian Leadville Prospective Resources⁹

Recoverable Helium	1U (P90) (BCF)	2U (P50) (BCF)	3U (P10) (BCF)
Gross to Valence - (28,046 gross acres)	7.6	10.9	12.9
Net to Valence - (18,959 net acres)	5.2	7.4	8.5
Net to GGE - (earning 85% of net Valence)	4.4	6.3	7.2
Red Project Total	7.9	20.8	57.6

Table 3 - Valence Devonian McCracken Prospective Resources

Recoverable Helium	1U (P90) (BCF)	2U (P50) (BCF)	Mean (BCF)	3U (P10) (BCF)
Gross to Valence - (19,508 gross acres)	0.5	1.8	2.3	4.7
Net to Valence - (13,336 net acres)	0.4	1.3	1.6	3.2
Net to GGE – (earning 85% of net Valence)	0.3	1.1	1.3	2.7
Red Project Total (Jesse McCracken)	1.4	4.9	6.3	13.5

The estimated quantities of helium that may potentially be recovered by the application of a future development project relate to undiscovered accumulations. These estimates have both an associated risk of discovery and a risk of development. Further exploration appraisal is required to determine the existence of a significant quantity of potentially moveable helium.

GGE now has a 77.5% interest in Valence with a right to secure a further 7.5% interest (total of 85%) on the following terms:

Earning 85% of Valence Resources	Max Commitment Spend	Cumulative Interest
Current Working Interest		77.5%
Drilling third well	US\$1.5M	85%

Notes on Table 1

Note 1: The Prospective Resource evaluations of the Leadville (from Sproule) and the McCracken (from GGE) are both done under the SPE-PRMS Guidance and the GGE McCracken methodology has been reviewed by Sproule. The resource numbers that are disclosed are from two separate reports and have been combined to generate Table 1 in this press release.

Note 2: Table 1 is generated by arithmetic summing of Table 2 and Table 3

Notes on Table 3

Note 1: The resource estimates have been prepared using the probabilistic method and are presented on an unrisks basis. In a probabilistic resource distribution, 1U (P90), 2U (P50), 3U (P10) estimates represent the 90% probability, 50% probability and 10%

⁹ Sproule as announced on ASX on 8 December 2021. The Company is not aware of any new information or data that materially affects the information included in the referenced ASX announcement and confirms that all material assumptions and technical parameters underpinning the estimates in the relevant market announcement continue to apply and have not materially changed.

probability respectively that the quantity recovered will equal or exceed the estimate assuming a success case in the prospect. The mean is the average of the generated probability distribution.

Note 2: The resource estimates provided have an effective date of 10th June 2023.

Note 3: GGE has the right to earn 85% of the incorporated joint venture company Valence Resources LLC (Valence) by drilling a third well at the Red Helium Project

Note 4: The Red Project comprises private and Utah State leases as described in Schedule A.

Note 5: Resources have been calculated as those helium volumes that the entity is allowed to lift and sell on behalf of the royalty owner

Note 6: The totals shown are the for the Jesse McCracken closure as described in the Methodology section of Schedule A.

Note 7: Red Project Total incorporates the entire Red Helium Jesse closure for the McCracken



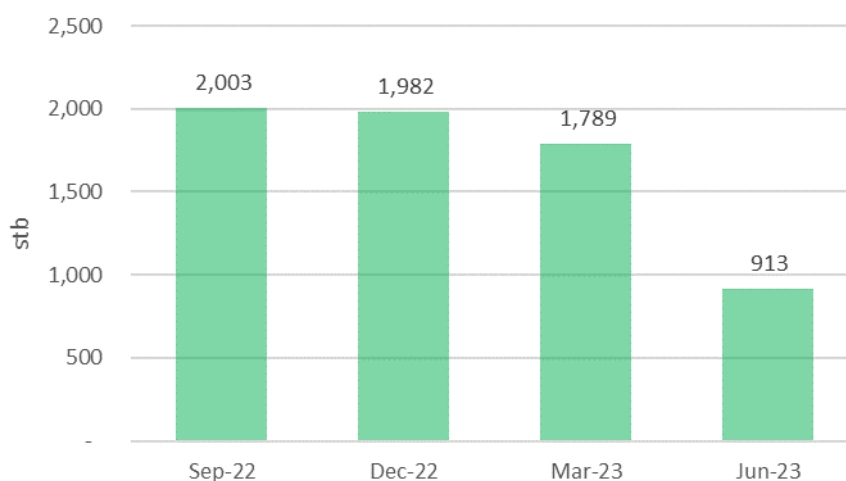
PRODUCTION SUMMARY

Total Grand Gulf Working Interest Quarterly Oil Production¹⁰

	Sep-22	Dec-22	Mar-23	Jun-23
Oil (bbls)	2,003	1,982	1,789	913

	Working Interest (WI)	Parish	Quarterly Bo		Daily Bo	
			Gross	GGE WI	Gross	GGE WI
Desiree Field	39.65%	Assumption	2276	913	25	10

Quarterly GGE WI Oil Production



Desiree Field

Desiree, Assumption Parish, Louisiana, Non-Operator 39.65% Working Interest

The Hensarling #1 well (Desiree Field) produced a total for the quarter of 2276 barrels of oil. The well produced at an average of 25 bo/d in the current quarter. The well was producing at 50 bopd before being shut-in on May 5th 2023 to replace the tubing. As at 30 June 2022, the 3P reserves attributed to the Cris RII and RIII sands ~123,000 bbls net to GGE¹¹.

¹⁰ Grand Gulf is entitled to its Working Interest (WI) share after royalty payment to the oil and gas mineral rights owners. Historical production corrected for updated WI calculation.

¹¹ Reserves calculated on a Net Revenue Interest (NRI) Basis



2022 Reserves and Resources Summary

Reserves and Resources as of 30 June 2022

Net to Grand Gulf Energy Ltd

FILED (LICENCE)	NET REV INTEREST	PROVED(1P)			PROVED + PROBABLE (2P)			PROVED, PROBABLE, POSSIBLE (3P)		
		LIQUIDS MBBL	GAS MMCF	OIL EQUIV ⁽¹⁾ MBOE	LIQUIDS MBBL	GAS MMCF	OIL EQUIV ⁽¹⁾ MBOE	LIQUIDS MBBL	GAS MMCF	OIL EQUIV ⁽¹⁾ MBOE
Reserves										
USA										
Desiree	30.96%	42	-	42	107	-	107	123	-	123
Total Reserves		42	-	42	107	-	107	123	-	123
CONTINGENT RESOURCES										
Reserves										
USA										
Desiree	30.96%	-	-	-	-	-	-	-	-	-
Total Contingent Resources		-	-	-	-	-	-	-	-	-
Total Reserves and Resources		42	-	42	107	-	107	123	-	123

⁽¹⁾ Oil equivalent conversion factor: 6MSCF per BBL.

Competent Persons Statement

The information contained in these statements has been compiled by Kevin James Kenning, Registered P.E. State of Texas #77656, who is a consultant of the Company, is qualified in accordance with ASX listing rule 5.11 and has consented to the publication of this report.

DJ Basin, Colorado, USA (66% WI)

The Company has ~66% working interests in 355 net acres in Weld County. Whilst progress in the quarter was limited, the asset is currently under review and the Company continues to look at ways to unlock the sale of its interest in the DJ Basin, buoyed by the current high oil price environment.

BUSINESS DEVELOPMENT

The Company is actively reviewing and assessing potential strategic helium acquisitions with synergies to the Red Helium project.

CORPORATE

- There were no corporate activities or changes to Board and Management in the June 2023 Quarter.

RELATED PARTY PAYMENTS

During the quarter ended 30 June 2023, the Company made payments of \$81,000 to related parties and their associates. These payments are directors fees and are in accordance with existing remuneration agreements with Directors.



LEASE SCHEDULE

The Company provides the following Schedule of lease interest held for the quarter as at 30 June 2023 as required by ASX Listing Rule 5.3.

Project	Location	Lease	Interest at Beginning of the Quarter	Interest at the end of the Quarter
Desiree/Louise	Assumption Parish, Louisiana	CL-0130	39.6/22.0%	39.6/22.0%
Desiree	Assumption Parish, Louisiana	12S14E52-031A (CL-0131)	39.6%	39.6%
Desiree	Assumption Parish, Louisiana	12S14E52-031B (CL-0131)	39.6%	39.6%
Desiree/Louise	Assumption Parish, Louisiana	12S14E52-001	39.6/22.0%	39.6/22.0%
Desiree/Louise	Assumption Parish, Louisiana	12S14E52-003	39.6/22.0%	39.6/22.0%
Desiree/Louise	Assumption Parish, Louisiana	12S14E52-005	39.6/22.0%	39.6/22.0%
Desiree/Louise	Assumption Parish, Louisiana	12S14E52-006	39.6/22.0%	39.6/22.0%
Desiree	Assumption Parish, Louisiana	12S14E52-008	39.6%	39.6%
Desiree/Louise	Assumption Parish, Louisiana	12S14E52-009	39.6/22.0%	39.6/22.0%
Desiree/Louise	Assumption Parish, Louisiana	12S14E52-011	39.6/22.0%	39.6/22.0%
Desiree/Louise	Assumption Parish, Louisiana	12S14E52-013	39.6/22.0%	39.6/22.0%
Desiree/Louise	Assumption Parish, Louisiana	12S14E52-014	39.6/22.0%	39.6/22.0%
Desiree/Louise	Assumption Parish, Louisiana	12S14E52-015	39.6/22.0%	39.6/22.0%
Desiree/Louise	Assumption Parish, Louisiana	12S14E52-016	39.6/22.0%	39.6/22.0%
Desiree/Louise	Assumption Parish, Louisiana	12S14E52-019	39.6/22.0%	39.6/22.0%
Desiree	Assumption Parish, Louisiana	12S14E52-020	39.6%	39.6%
Desiree/Louise	Assumption Parish, Louisiana	12S14E52-022A	39.6/22.0%	39.6/22.0%
Desiree/Louise	Assumption Parish, Louisiana	12S14E52-022B	39.6/22.0%	39.6/22.0%
Desiree/Louise	Assumption Parish, Louisiana	12S14E52-012	39.6/22.0%	39.6/22.0%
Desiree/Louise	Assumption Parish, Louisiana	12S14E52-002	39.6/22.0%	39.6/22.0%
Desiree/Louise	Assumption Parish, Louisiana	12S14E52-018	39.6/22.0%	39.6/22.0%
Desiree/Louise	Assumption Parish, Louisiana	12S14E52-021A	39.6/22.0%	39.6/22.0%
Desiree/Louise	Assumption Parish, Louisiana	12S14E52-021B	39.6/22.0%	39.6/22.0%
Desiree/Louise	Assumption Parish, Louisiana	12S14E52-024	39.6/22.0%	39.6/22.0%
Louise	Assumption Parish, Louisiana	12S14E52-025	39.6%	39.6%
Desiree/Louise	Assumption Parish, Louisiana	12S14E52-026	39.6/22.0%	39.6/22.0%
Louise	Assumption Parish, Louisiana	12S14E52-028	22.0%	22.0%
Louise	Assumption Parish, Louisiana	12S14E53-001	22.0%	22.0%
Louise	Assumption Parish, Louisiana	12S14E53-002A	22.0%	22.0%
Louise	Assumption Parish, Louisiana	12S14E53-002B	22.0%	22.0%
Desiree/Louise	Assumption Parish, Louisiana	12S14E52-002C	39.6/22.0%	39.6/22.0%
Desiree/Louise	Assumption Parish, Louisiana	12S14E52-002D	39.6/22.0%	39.6/22.0%
Desiree/Louise	Assumption Parish, Louisiana	12S14E52-002E	39.6/22.0%	39.6/22.0%
Louise	Assumption Parish, Louisiana	12S14E53-003	22.0%	22.0%
Louise	Assumption Parish, Louisiana	12S14E53-004	22.0%	22.0%
Louise	Assumption Parish, Louisiana	12S14E53-005	22.0%	22.0%
Louise	Assumption Parish, Louisiana	12S14E53-006	22.0%	22.0%
Louise	Assumption Parish, Louisiana	12S14E53-007	22.0%	22.0%
Desiree	Assumption Parish, Louisiana	12S14E52-032 (CL-0068 & 0106)	39.6%	39.6%
Louise	Assumption Parish, Louisiana	12S14E52-029	22.0%	22.0%
Louise	Assumption Parish, Louisiana	12S14E52-030	22.0%	22.0%
DJ Basin	Weld County, Colorado	Lease A	52.2%	52.2%
DJ Basin	Weld County, Colorado	Lease B	52.2%	52.2%
DJ Basin	Weld County, Colorado	Lease C	52.2%	52.2%



Red Helium Project	San Juan County, Utah	1000	55.00%	55.00%
Red Helium Project	San Juan County, Utah	1001	55.00%	55.00%
Red Helium Project	San Juan County, Utah	1002	55.00%	55.00%
Red Helium Project	San Juan County, Utah	1003	55.00%	55.00%
Red Helium Project	San Juan County, Utah	1004	55.00%	55.00%
Red Helium Project	San Juan County, Utah	1005	55.00%	55.00%
Red Helium Project	San Juan County, Utah	1006	55.00%	55.00%
Red Helium Project	San Juan County, Utah	1007	55.00%	55.00%
Red Helium Project	San Juan County, Utah	1008	55.00%	55.00%
Red Helium Project	San Juan County, Utah	1009	55.00%	55.00%
Red Helium Project	San Juan County, Utah	1010	55.00%	55.00%
Red Helium Project	San Juan County, Utah	1011	55.00%	55.00%
Red Helium Project	San Juan County, Utah	1012	55.00%	55.00%
Red Helium Project	San Juan County, Utah	1013	55.00%	55.00%
Red Helium Project	San Juan County, Utah	1014	55.00%	55.00%
Red Helium Project	San Juan County, Utah	1015	55.00%	55.00%
Red Helium Project	San Juan County, Utah	1016	55.00%	55.00%
Red Helium Project	San Juan County, Utah	1017	55.00%	55.00%
Red Helium Project	San Juan County, Utah	1018	55.00%	55.00%
Red Helium Project	San Juan County, Utah	1019	55.00%	55.00%
Red Helium Project	San Juan County, Utah	1020	55.00%	55.00%
Red Helium Project	San Juan County, Utah	1021	55.00%	55.00%
Red Helium Project	San Juan County, Utah	1022	55.00%	55.00%
Red Helium Project	San Juan County, Utah	1023	55.00%	55.00%
Red Helium Project	San Juan County, Utah	1024	55.00%	55.00%
Red Helium Project	San Juan County, Utah	1025	55.00%	55.00%
Red Helium Project	San Juan County, Utah	1026	55.00%	55.00%
Red Helium Project	San Juan County, Utah	1027	55.00%	55.00%
Red Helium Project	San Juan County, Utah	1028	55.00%	55.00%
Red Helium Project	San Juan County, Utah	1029	55.00%	55.00%
Red Helium Project	San Juan County, Utah	1030	55.00%	55.00%
Red Helium Project	San Juan County, Utah	1031	55.00%	55.00%
Red Helium Project	San Juan County, Utah	1032	55.00%	55.00%
Red Helium Project	San Juan County, Utah	1033	55.00%	55.00%
Red Helium Project	San Juan County, Utah	1034	55.00%	55.00%
Red Helium Project	San Juan County, Utah	1035	55.00%	55.00%
Red Helium Project	San Juan County, Utah	1036	55.00%	55.00%
Red Helium Project	San Juan County, Utah	1037	55.00%	55.00%
Red Helium Project	San Juan County, Utah	1038	55.00%	55.00%
Red Helium Project	San Juan County, Utah	1039	55.00%	55.00%
Red Helium Project	San Juan County, Utah	1040	55.00%	55.00%
Red Helium Project	San Juan County, Utah	1041	55.00%	55.00%
Red Helium Project	San Juan County, Utah	1042	55.00%	55.00%
Red Helium Project	San Juan County, Utah	1043	55.00%	55.00%
Red Helium Project	San Juan County, Utah	1044	55.00%	55.00%
Red Helium Project	San Juan County, Utah	1045	55.00%	55.00%
Red Helium Project	San Juan County, Utah	1046	55.00%	55.00%
Red Helium Project	San Juan County, Utah	1047	55.00%	55.00%
Red Helium Project	San Juan County, Utah	1048	55.00%	55.00%
Red Helium Project	San Juan County, Utah	1049	55.00%	55.00%



Red Helium Project	San Juan County, Utah	1050	55.00%	55.00%
Red Helium Project	San Juan County, Utah	1051	55.00%	55.00%
Red Helium Project	San Juan County, Utah	1052	55.00%	55.00%
Red Helium Project	San Juan County, Utah	1053	55.00%	55.00%
Red Helium Project	San Juan County, Utah	1054	55.00%	55.00%
Red Helium Project	San Juan County, Utah	1055	55.00%	55.00%
Red Helium Project	San Juan County, Utah	1056	55.00%	55.00%
Red Helium Project	San Juan County, Utah	1057	55.00%	55.00%
Red Helium Project	San Juan County, Utah	1058	55.00%	55.00%
Red Helium Project	San Juan County, Utah	1059	55.00%	55.00%
Red Helium Project	San Juan County, Utah	1060	55.00%	55.00%
Red Helium Project	San Juan County, Utah	1061	55.00%	55.00%
Red Helium Project	San Juan County, Utah	ML 54121 OBA	55.00%	55.00%
Red Helium Project	San Juan County, Utah	ML 54122 OBA	55.00%	55.00%
Red Helium Project	San Juan County, Utah	ML 54123 OBA	55.00%	55.00%
Red Helium Project	San Juan County, Utah	ML 54124 OBA	55.00%	55.00%
Red Helium Project	San Juan County, Utah	ML 54125 OBA	55.00%	55.00%
Red Helium Project	San Juan County, Utah	ML 54126 OBA	55.00%	55.00%
Red Helium Project	San Juan County, Utah	ML 54127 OBA	55.00%	55.00%
Red Helium Project	San Juan County, Utah	ML 54128 OBA	55.00%	55.00%
Red Helium Project	San Juan County, Utah	ML 54129 OBA	55.00%	55.00%
Red Helium Project	San Juan County, Utah	ML 54130 OBA	55.00%	55.00%
Red Helium Project	San Juan County, Utah	ML 54131 OBA	55.00%	55.00%
Red Helium Project	San Juan County, Utah	ML 54132 OBA	55.00%	55.00%
Red Helium Project	San Juan County, Utah	ML 54133 OBA	55.00%	55.00%
Red Helium Project	San Juan County, Utah	ML 54134 OBA	55.00%	55.00%
Red Helium Project	San Juan County, Utah	ML 54135 OBA	55.00%	55.00%
Red Helium Project	San Juan County, Utah	ML 54136 OBA	55.00%	55.00%
Red Helium Project	San Juan County, Utah	ML 54137 OBA	55.00%	55.00%
Red Helium Project	San Juan County, Utah	ML 54138 OBA	55.00%	55.00%
Red Helium Project	San Juan County, Utah	ML 54139 OBA	55.00%	55.00%
Red Helium Project	San Juan County, Utah	ML 54140 OBA	55.00%	55.00%
Red Helium Project	San Juan County, Utah	ML 54141 OBA	55.00%	55.00%
Red Helium Project	San Juan County, Utah	ML 54142 OBA	55.00%	55.00%
Red Helium Project	San Juan County, Utah	ML 54143 OBA	55.00%	55.00%
Red Helium Project	San Juan County, Utah	ML 54144 OBA	55.00%	55.00%
Red Helium Project	San Juan County, Utah	1062	55.00%	55.00%
Red Helium Project	San Juan County, Utah	1063	55.00%	55.00%
Red Helium Project	San Juan County, Utah	1064	55.00%	55.00%
Red Helium Project	San Juan County, Utah	1065	55.00%	55.00%
Red Helium Project	San Juan County, Utah	1066	55.00%	55.00%
Red Helium Project	San Juan County, Utah	1067	55.00%	55.00%
Red Helium Project	San Juan County, Utah	1068	55.00%	55.00%
Red Helium Project	San Juan County, Utah	1069	55.00%	55.00%
Red Helium Project	San Juan County, Utah	1070	55.00%	55.00%
Red Helium Project	San Juan County, Utah	1071	55.00%	55.00%
Red Helium Project	San Juan County, Utah	1072	55.00%	55.00%
Red Helium Project	San Juan County, Utah	1073	55.00%	55.00%
Red Helium Project	San Juan County, Utah	1074	55.00%	55.00%
Red Helium Project	San Juan County, Utah	1075	55.00%	55.00%



Red Helium Project	San Juan County, Utah	1076	55.00%	55.00%
Red Helium Project	San Juan County, Utah	1077	55.00%	55.00%
Red Helium Project	San Juan County, Utah	1078	55.00%	55.00%
Red Helium Project	San Juan County, Utah	1079	55.00%	55.00%
Red Helium Project	San Juan County, Utah	1080	55.00%	55.00%
Red Helium Project	San Juan County, Utah	1081	55.00%	55.00%
Red Helium Project	San Juan County, Utah	1082	55.00%	55.00%
Red Helium Project	San Juan County, Utah	1083	55.00%	55.00%
Red Helium Project	San Juan County, Utah	1084	55.00%	55.00%
Red Helium Project	San Juan County, Utah	1085	55.00%	55.00%
Red Helium Project	San Juan County, Utah	1086	55.00%	55.00%
Red Helium Project	San Juan County, Utah	1087	55.00%	55.00%
Red Helium Project	San Juan County, Utah	1088	55.00%	55.00%
Red Helium Project	San Juan County, Utah	1089	55.00%	55.00%
Red Helium Project	San Juan County, Utah	1090	55.00%	55.00%
Red Helium Project	San Juan County, Utah	1091	55.00%	55.00%
Red Helium Project	San Juan County, Utah	1092	55.00%	55.00%
Red Helium Project	San Juan County, Utah	1093	55.00%	55.00%
Red Helium Project	San Juan County, Utah	1094	55.00%	55.00%
Red Helium Project	San Juan County, Utah	1095	55.00%	55.00%
Red Helium Project	San Juan County, Utah	1096	55.00%	55.00%
Red Helium Project	San Juan County, Utah	1097	55.00%	55.00%
Red Helium Project	San Juan County, Utah	1098	55.00%	55.00%
Red Helium Project	San Juan County, Utah	1099	55.00%	55.00%
Red Helium Project	San Juan County, Utah	1100	55.00%	55.00%
Red Helium Project	San Juan County, Utah	1101	55.00%	55.00%
Red Helium Project	San Juan County, Utah	1102	55.00%	55.00%
Red Helium Project	San Juan County, Utah	1103	55.00%	55.00%
Red Helium Project	San Juan County, Utah	1104	55.00%	55.00%
Red Helium Project	San Juan County, Utah	1105	55.00%	55.00%
Red Helium Project	San Juan County, Utah	1106	55.00%	55.00%
Red Helium Project	San Juan County, Utah	1107	55.00%	55.00%
Red Helium Project	San Juan County, Utah	1108	55.00%	55.00%
Red Helium Project	San Juan County, Utah	1109	55.00%	55.00%
Red Helium Project	San Juan County, Utah	1110	55.00%	55.00%
Red Helium Project	San Juan County, Utah	1111	55.00%	55.00%
Red Helium Project	San Juan County, Utah	1112	55.00%	55.00%
Red Helium Project	San Juan County, Utah	1113	55.00%	55.00%
Red Helium Project	San Juan County, Utah	1114	55.00%	55.00%
Red Helium Project	San Juan County, Utah	1115	55.00%	55.00%
Red Helium Project	San Juan County, Utah	1116	55.00%	55.00%
Red Helium Project	San Juan County, Utah	1117	55.00%	55.00%
Red Helium Project	San Juan County, Utah	1118	55.00%	55.00%
Red Helium Project	San Juan County, Utah	1119	55.00%	55.00%
Red Helium Project	San Juan County, Utah	1120	55.00%	55.00%
Red Helium Project	San Juan County, Utah	1121	55.00%	55.00%
Red Helium Project	San Juan County, Utah	1122	55.00%	55.00%
Red Helium Project	San Juan County, Utah	1123	55.00%	55.00%
Red Helium Project	San Juan County, Utah	1124	55.00%	55.00%
Red Helium Project	San Juan County, Utah	1125	55.00%	55.00%



Red Helium Project	San Juan County, Utah	1126	55.00%	55.00%
Red Helium Project	San Juan County, Utah	1127	55.00%	55.00%
Red Helium Project	San Juan County, Utah	1128	55.00%	55.00%
Red Helium Project	San Juan County, Utah	1129	55.00%	55.00%
Red Helium Project	San Juan County, Utah	1130	55.00%	55.00%
Red Helium Project	San Juan County, Utah	1131	55.00%	55.00%
Red Helium Project	San Juan County, Utah	1132	55.00%	55.00%
Red Helium Project	San Juan County, Utah	1133	55.00%	55.00%
Red Helium Project	San Juan County, Utah	1134	55.00%	55.00%
Red Helium Project	San Juan County, Utah	1135	55.00%	55.00%
Red Helium Project	San Juan County, Utah	1136	55.00%	55.00%
Red Helium Project	San Juan County, Utah	1137	55.00%	55.00%
Red Helium Project	San Juan County, Utah	1138	55.00%	55.00%
Red Helium Project	San Juan County, Utah	1139	55.00%	55.00%
Red Helium Project	San Juan County, Utah	1140	55.00%	55.00%
Red Helium Project	San Juan County, Utah	1141	55.00%	55.00%
Red Helium Project	San Juan County, Utah	1144	55.00%	55.00%
Red Helium Project	San Juan County, Utah	1145	55.00%	55.00%
Red Helium Project	San Juan County, Utah	1147	55.00%	55.00%
Red Helium Project	San Juan County, Utah	1148	55.00%	55.00%
Red Helium Project	San Juan County, Utah	1149	55.00%	55.00%
Red Helium Project	San Juan County, Utah	1150	55.00%	55.00%
Red Helium Project	San Juan County, Utah	1151	55.00%	55.00%



Forward Looking Statements

This report contains forward looking statements that are subject to risk factors associated with resources businesses. It is believed that the expectations reflected in these statements are reasonable but they may be affected by a variety of variables and changes in underlying assumptions which could cause actual results or trends to differ materially, including but not limited to: price fluctuations, actual demand, currency fluctuations, drilling and production results, reserve estimates, loss of market, industry competition, environmental risks, physical risks, legislative, fiscal and regulatory developments, economic and financial market conditions in various countries and regions, political risks, project delay or advancement, approvals and cost estimates.

Competent Persons Statement

The oil & gas information in this report has been reviewed and signed off by Kevin Kenning (Registered Reservoir Engineer, Registered P.E. State of Texas #77656) with over 38 years relevant experience within oil and gas sector, who is a consultant of the Company, is qualified in accordance with ASX listing rule 5.11 and has consented to the publication of this report.

The helium information in this report is based on information compiled or reviewed by Sproule Energy Consulting (“Sproule”) and Mr Keith Martens. Sproule is an independent resources and reserves certification specialist and is considered the world’s leading helium evaluator. Mr Martens is a qualified oil and gas geologist/geophysicist with over 45 years of Australian, North American, and other international executive oil and gas experience in both onshore and offshore environments. He has extensive experience of oil and gas exploration, appraisal, strategy development and reserve/resource estimation. Mr Martens has a BSc. (Dual Major) in geology and geophysics from The University of British Columbia, Vancouver, Canada.

Oil and Gas Glossary

Abbreviation	Abbreviation meaning	Abbreviation	Abbreviation meaning
1P	proved reserves	A\$ or AUD	Australian dollars
2P	proved plus Probable reserves	US\$ or USD	United states dollars
3P	proved plus Probable plus Possible reserves	Q1	first quarter ended September 30 th
bbl or bbbls	barrel of oil	Q2	second quarter ended December 31 st
boe	barrel of oil equivalent (1 bbl = 6 Mcf)	Q3	third quarter ended March 31 st
d	suffix – per day	Q4	fourth quarter ended June 30 th
GJ	gigajoules	YTD	year-to-date
mbbl	thousands of barrels	YE	year-end
mboe	thousands of barrels of oil equivalent	H1	six months ended June 30 th
Mcf	thousand cubic feet	H2	six months ended December 31 st
MMcf	million cubic feet	B	Prefix – Billions
PDP	proved developed producing reserves	MM	Prefix - Millions
PUD	Proved Undeveloped Producing	M	Prefix - Thousands
C	Contingent Resources – 1C/2C/3C – low/most likely/high	/d	Suffix – per day
Net	Working Interest after Deduction of Royalty Interests	bbl	Barrel of Oil
NPV (10)	Net Present Value (discount rate), before income tax	boe	Barrel of Oil Equivalent (1bbl = 6 mscf)
EUR	Estimated Ultimate Recovery per well	scf	Standard Cubic Foot of Gas
WTI	West Texas Intermediate Oil Benchmark Price	Bcf	Billion Standard Cubic Foot of Gas
LLS	Louisiana Light Oil Benchmark Price	CY	Calendar Year
1P or TP	Total Proved	OCF	Operating Cash Flow, ex Capex
2P or TPP	Total Proved plus Probable Reserves	E	Estimate
3P	Total Proved plus Probable plus Possible Reserves	Net Acres	Working Interest
EBITDA	Earnings before interest, tax, depreciation, depletion and amortisation		



Appendix 5B

Mining exploration entity or oil and gas exploration entity
quarterly cash flow report

Name of entity

GRAND GULF ENERGY LTD

ABN

22 073 653 175

Quarter ended ("current quarter")

30 June 2023

Consolidated statement of cash flows		Current quarter \$A'000	Year to date (12 months) \$A'000
1.	Cash flows from operating activities		
1.1	Receipts from customers	44	706
1.2	Payments for		
	(a) exploration & evaluation	(4,149)	(8,246)
	(b) development	-	-
	(c) production	(118)	(518)
	(d) staff costs	(43)	(263)
	(e) administration and corporate costs	(155)	(810)
1.3	Dividends received (see note 3)	-	-
1.4	Interest received	-	-
1.5	Interest and other costs of finance paid	-	-
1.6	Income taxes paid	-	-
1.7	Government grants and tax incentives	-	-
1.8	Other (provide details if material)	-	-
1.9	Net cash from / (used in) operating activities	(4,421)	(9,131)
2.	Cash flows from investing activities		
2.1	Payments to acquire or for:		
	(a) entities	-	-
	(b) tenements	-	-
	(c) property, plant and equipment	-	-
	(d) exploration & evaluation	-	-
	(e) investments	-	-
	(f) other non-current assets	-	-

Consolidated statement of cash flows		Current quarter \$A'000	Year to date (12 months) \$A'000
2.2	Proceeds from the disposal of:		
	(a) entities	-	-
	(b) tenements	-	-
	(c) property, plant and equipment	-	-
	(d) investments	-	-
	(e) other non-current assets	-	-
2.3	Cash flows from loans to other entities	-	-
2.4	Dividends received (see note 3)	-	-
2.5	Other (provide details if material)	-	-
2.6	Net cash from / (used in) investing activities	-	-
3.	Cash flows from financing activities		
3.1	Proceeds from issues of equity securities (excluding convertible debt securities)	-	2,500
3.2	Proceeds from issue of convertible debt securities	-	-
3.3	Proceeds from exercise of options	-	-
3.4	Transaction costs related to issues of equity securities or convertible debt securities	(10)	(175)
3.5	Proceeds from borrowings	-	-
3.6	Repayment of borrowings	-	-
3.7	Transaction costs related to loans and borrowings	-	-
3.8	Dividends paid	-	-
3.9	Other (provide details if material)	-	-
3.10	Net cash from / (used in) financing activities	(10)	2,325
4.	Net increase / (decrease) in cash and cash equivalents for the period		
4.1	Cash and cash equivalents at beginning of period	5,646	7,917
1,	Net cash from / (used in) operating activities (item 1.9 above)	(4,421)	(9,131)
4.3	Net cash from / (used in) investing activities (item 2.6 above)	-	-
4.4	Net cash from / (used in) financing activities (item 3.10 above)	(10)	2,325

Mining exploration entity or oil and gas exploration entity quarterly cash flow report

Consolidated statement of cash flows		Current quarter \$A'000	Year to date (12 months) \$A'000
4.5	Effect of movement in exchange rates on cash held	9	112
4.6	Cash and cash equivalents at end of period	1,223	1,223

5.	Reconciliation of cash and cash equivalents at the end of the quarter (as shown in the consolidated statement of cash flows) to the related items in the accounts	Current quarter \$A'000	Previous quarter \$A'000
5.1	Bank balances	1,223	5,646
5.2	Call deposits	-	-
5.3	Bank overdrafts	-	-
5.4	Other (provide details)	-	-
5.5	Cash and cash equivalents at end of quarter (should equal item 4.6 above)	1,223	5,646

6.	Payments to related parties of the entity and their associates	Current quarter \$A'000
6.1	Aggregate amount of payments to related parties and their associates included in item 1	81
6.2	Aggregate amount of payments to related parties and their associates included in item 2	-
<i>Note: if any amounts are shown in items 6.1 or 6.2, your quarterly activity report must include a description of, and an explanation for, such payments.</i>		

Mining exploration entity or oil and gas exploration entity quarterly cash flow report

7.	Financing facilities <i>Note: the term "facility" includes all forms of financing arrangements available to the entity.</i> <i>Add notes as necessary for an understanding of the sources of finance available to the entity.</i>	Total facility amount at quarter end \$A'000	Amount drawn at quarter end \$A'000
7.1	Loan facilities	-	-
7.2	Credit standby arrangements	-	-
7.3	Other (please specify)	-	-
7.4	Total financing facilities	-	-
7.5	Unused financing facilities available at quarter end		-
7.6	Include in the box below a description of each facility above, including the lender, interest rate, maturity date and whether it is secured or unsecured. If any additional financing facilities have been entered into or are proposed to be entered into after quarter end, include a note providing details of those facilities as well.		

8.	Estimated cash available for future operating activities	\$A'000
8.1	Net cash from / (used in) operating activities (item 1.9)	(4,421)
8.2	(Payments for exploration & evaluation classified as investing activities) (item 2.1(d))	-
8.3	Total relevant outgoings (item 8.1 + item 8.2)	(4,421)
8.4	Cash and cash equivalents at quarter end (item 4.6)	1,223
8.5	Unused finance facilities available at quarter end (item 7.5)	-
8.6	Total available funding (item 8.4 + item 8.5)	1,223
8.7	Estimated quarters of funding available (item 8.6 divided by item 8.3)	0.28
	<i>Note: if the entity has reported positive relevant outgoings (ie a net cash inflow) in item 8.3, answer item 8.7 as "N/A". Otherwise, a figure for the estimated quarters of funding available must be included in item 8.7.</i>	
8.8	If item 8.7 is less than 2 quarters, please provide answers to the following questions:	
8.8.1	Does the entity expect that it will continue to have the current level of net operating cash flows for the time being and, if not, why not?	
	Answer: Yes. The Company has the ability to curtail expenditure when required. Planned expenditure will be curtailed accordingly.	
8.8.2	Has the entity taken any steps, or does it propose to take any steps, to raise further cash to fund its operations and, if so, what are those steps and how likely does it believe that they will be successful?	
	Answer: The company will not undertake the drilling of Jesse#3 until such time that it has adequate cash resources to do so. The Company can meet its debts as and when they fall due and is currently contemplating the most suitable mechanism to secure adequate funds to undertake further operations.	

8.8.3 Does the entity expect to be able to continue its operations and to meet its business objectives and, if so, on what basis?

Answer: The Company will be able to meet its business objectives. Expenditure has currently been significantly cut back in the interim. The Company can meet its debts as and when they fall due. The company has a good track record in raising funds to undertake exploration expenditure.

Note: where item 8.7 is less than 2 quarters, all of questions 8.8.1, 8.8.2 and 8.8.3 above must be answered.

Compliance statement

- 1 This statement has been prepared in accordance with accounting standards and policies which comply with Listing Rule 19.11A.
- 2 This statement gives a true and fair view of the matters disclosed.

Date: 28 July 2023

Authorised by:By the board of directors.

Notes

1. This quarterly cash flow report and the accompanying activity report provide a basis for informing the market about the entity's activities for the past quarter, how they have been financed and the effect this has had on its cash position. An entity that wishes to disclose additional information over and above the minimum required under the Listing Rules is encouraged to do so.
2. If this quarterly cash flow report has been prepared in accordance with Australian Accounting Standards, the definitions in, and provisions of, *AASB 6: Exploration for and Evaluation of Mineral Resources* and *AASB 107: Statement of Cash Flows* apply to this report. If this quarterly cash flow report has been prepared in accordance with other accounting standards agreed by ASX pursuant to Listing Rule 19.11A, the corresponding equivalent standards apply to this report.
3. Dividends received may be classified either as cash flows from operating activities or cash flows from investing activities, depending on the accounting policy of the entity.
4. If this report has been authorised for release to the market by your board of directors, you can insert here: "By the board". If it has been authorised for release to the market by a committee of your board of directors, you can insert here: "By the [name of board committee – eg Audit and Risk Committee]". If it has been authorised for release to the market by a disclosure committee, you can insert here: "By the Disclosure Committee".
5. If this report has been authorised for release to the market by your board of directors and you wish to hold yourself out as complying with recommendation 4.2 of the ASX Corporate Governance Council's *Corporate Governance Principles and Recommendations*, the board should have received a declaration from its CEO and CFO that, in their opinion, the financial records of the entity have been properly maintained, that this report complies with the appropriate accounting standards and gives a true and fair view of the cash flows of the entity, and that their opinion has been formed on the basis of a