

QUARTERLY ACTIVITIES REPORT

30 JUNE 2023

HIGHLIGHTS

GORMAN, ONTARIO

- First pass reconnaissance exploration commenced during the quarter, identifying an 8km long pegmatite trend (after quarter end), along trend from Frontier Lithium's world-class PAK-Spark lithium project.
- High-grade rock chip assays were received in July from the G0 to G3 pegmatites at Gorman over a 5.2km-long, NW-SE-striking mineralised lithium-caesium-tantalum (LCT) pegmatite trend that is open along strike in both directions.
- Of the 102 rock chip samples submitted for assaying, 37 returned >1.0% Li₂O, 18 returned >2.0% Li₂O and 9 returned >3.0% Li₂O.
- A follow-up sampling and mapping program is planned for August, followed by drilling permit applications for a maiden drill program.
- The Gorman Project was extended with new claim staking adding ~34km² of potential strike prospectivity to the overall claim package to ~349km².

WICKENBURG, ARIZONA

- Rock chip and soil sampling was undertaken at Wickenburg during the quarter and followed up with a drilling program in July.
- Approval to drill at the Wickenburg Project was granted by the Bureau of Land Management (**BLM**) to conduct initial testing of the Dove West pegmatite.
- Subsequent to quarter end, Patriot commenced and concluded this preliminary scout drilling program after identifying that the mineralisation has likely been truncated by faulting.
- Detailed gravity survey results from Wickenburg received after the quarter end show an extensive NNW trending gravity low, indicating further areas of interest at Dove.
- 148 new lode mining claims (~12km²) have been added to the Wickenburg Project, bringing the total project area to ~40km².

BLACK HILLS, SOUTH DAKOTA AND WYOMING

- Rock chip samples were collected from identified pegmatites and will be analysed, with a follow-up sampling program planned for August 2023.
 - Additional staking in the Black Hills added ~4 km² to the Tinton West Project and 15 km² to the Keystone Project.
-
- Cash on hand at the end of the quarter was \$5.1 million.
 - Mr Nick Vickery commenced in April as CEO and Managing Director and Mr Phil Smerchanski of Accretive Metals Advisory was appointed to run the Ontario Projects.

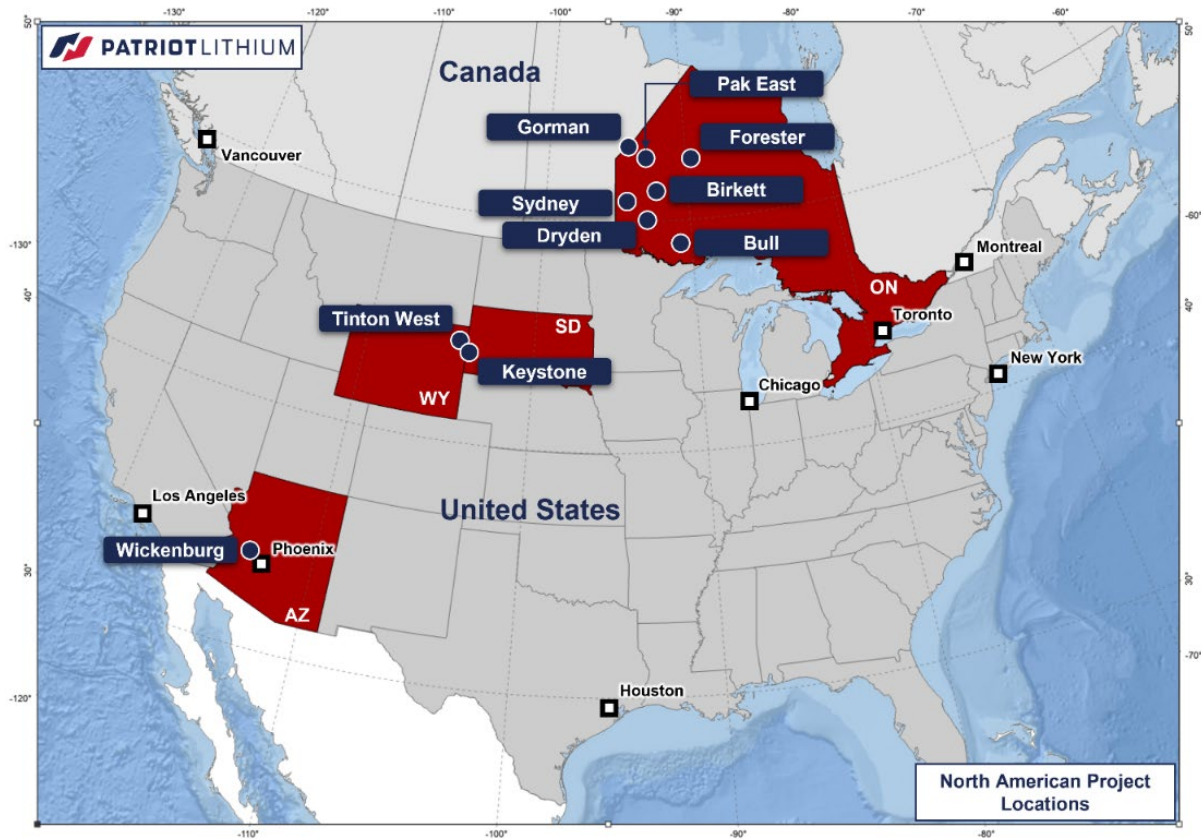


Figure 1: Map illustrating the locations of PAT's Projects in western Ontario (ON), Canada, as well as US Projects in the Black Hills of South Dakota (SD), Wyoming (WY) and Wickenburg, Arizona (AZ).

EXPLORATION ACTIVITIES

Gorman Project, Ontario, Canada (100% PAT)

Post quarter end, first pass reconnaissance exploration at the Gorman Project was completed by Equity Exploration and managed by Accretive Metals Advisory.

The early signs at the Gorman Project have been highly encouraging, with five separate zones of outcropping pegmatite identified along an open 8km of strike that are interpreted to belong to the same pegmatite group. Individual pegmatite zones have strike lengths of up to 530m and apparent exposed widths at surface of up to 14m.

A second identified trend 5km to the north of the main trend adds additional strike length potential. Encouragingly, the identified trend is along trend from Frontier Lithium's world-class PAK-Spark lithium project.

Rock samples collected during the reconnaissance were submitted to ALS Laboratories for assaying with results being received at the end of July.

Assay results from rock chip samples have confirmed significant lithium mineralisation potential over a strike length of 5.2km with the mineralised LCT pegmatite trend open along strike to the NW and SE.

Given the sample type, being grab samples from outcropping pegmatites, and sample distribution, being a function of helicopter-accessible outcrop locations, additional, more detailed sampling programs will need to be undertaken to establish the form, width and composition of the pegmatites.

Of the 102 rock chip samples submitted and returned from assaying, 37 returned >1.0% Li₂O, 18 returned >2.0% Li₂O and 9 returned >3.0% Li₂O. Of the samples that returned greater than 1% Li₂O, all had relatively low iron averaging 0.66% Fe.

Key results include:

- Sample E516917 with 3.71% Li₂O (G2 pegmatite)
- Sample E516809 with 3.54% Li₂O (G2 pegmatite)
- Sample D721066 with 3.49% Li₂O (G1 pegmatite)
- Sample E516915 with 3.47% Li₂O (G2 pegmatite)
- Sample E516948 with 3.36% Li₂O (G0 pegmatite)
- Sample D721111 with 3.35% Li₂O (G3 pegmatite)

X-ray diffraction (XRD) analysis and visual inspection have confirmed spodumene as the only lithium mineral in two initial albeit representative samples (D721111 and D721331) sent for analysis. Additional samples are being submitted. Mineralised samples also included LCT pathfinder minerals such as garnet and tourmaline. Findings to date are preliminary and require additional confirmatory results.

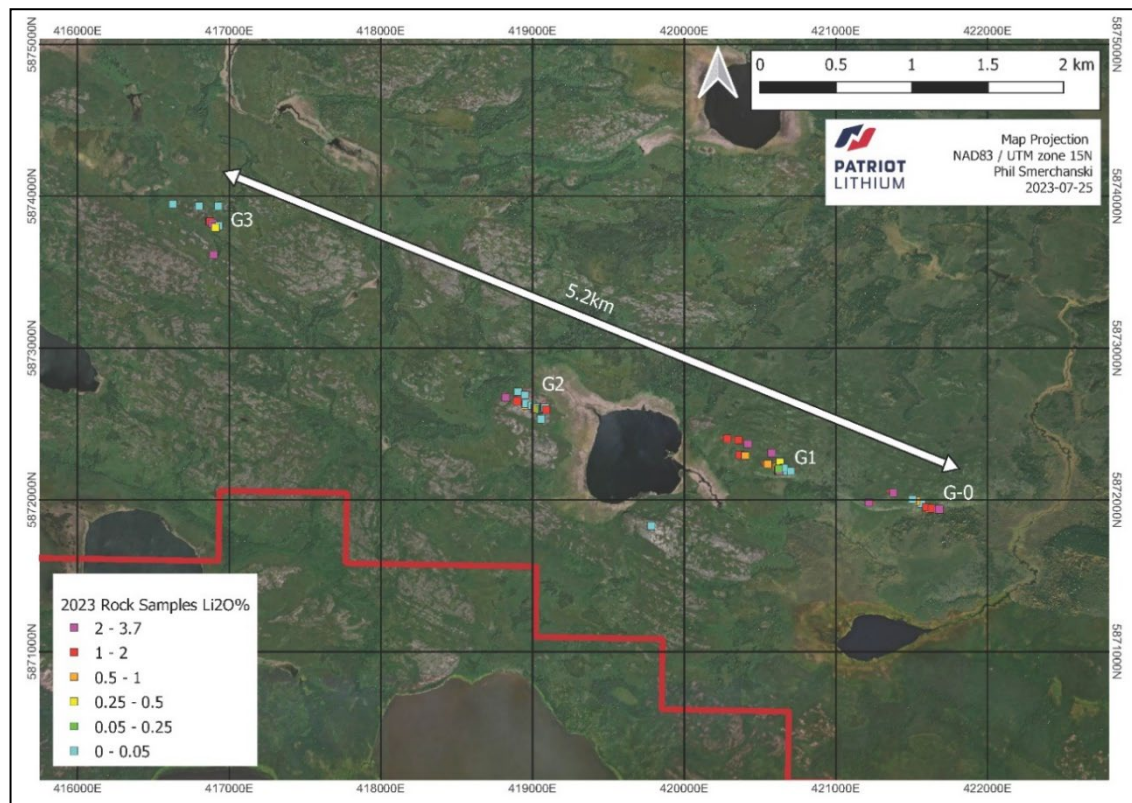


Figure 2: Rock chip locations and assay results, spodumene bearing LCT pegmatites G-0 to G3

Wickenburg Project, Arizona, United States (100% PAT)

Approval to drill at the Wickenburg Project was granted by the Bureau of Land Management (BLM) and announced to the market on 27 June 2023.

This initial scout drilling program, which commenced in July, was designed to test the Dove West pegmatite in and around the historic 'Main Pit' and 'Lower Cut' workings, with drilling sites site

selected due to their ease of access, short approvals timeframes and high-grade surface spodumene samples (up to 5.88% Li₂O¹) in outcrop.

A total of five (5) holes were drilled at Dove, with no pegmatite bodies intersected. The program was concluded early, as it appears that the pegmatite bodies have been truncated at depth by faulting.

Rock chip samples from LCT pegmatites along the Dove West, Dove East and Mammoth trends returned numerous anomalous results. A peak lithium-in-rock chip value of 1.35% Li₂O was delivered from the 'Lower Cut' at the historic Dove pegmatite mine.

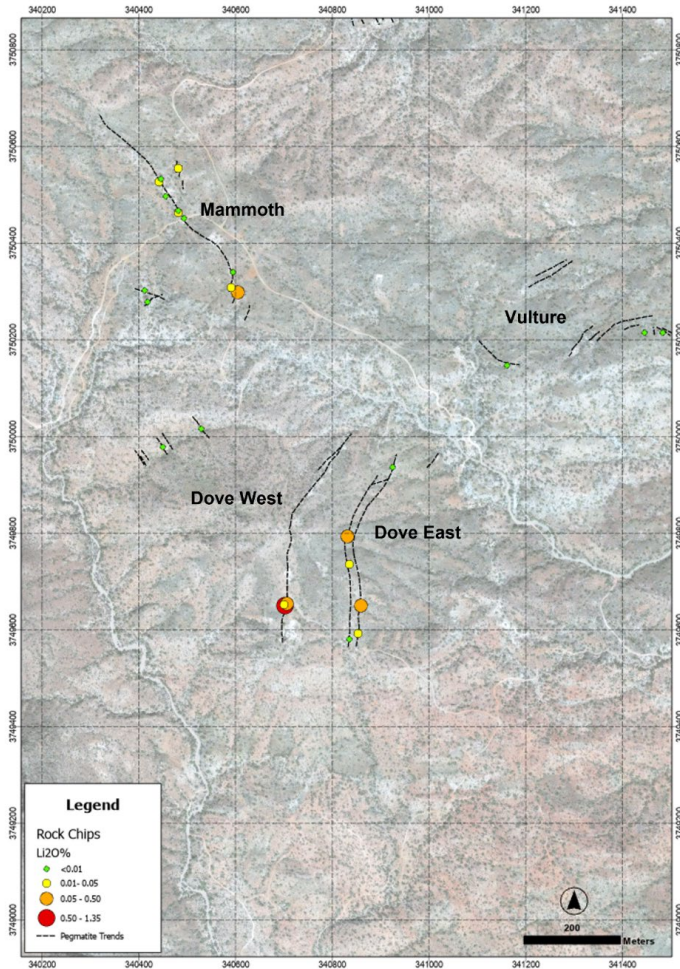


Figure 3: Phase 1 lithium-in-rock chip assay results for the Dove, Mammoth and Vulture pegmatite trends. Also shown are the locations of XRD samples DoveW-01 and 252067.

Subsequent to the quarter end, a detailed gravity survey was undertaken at Dove, defining an extensive NNW trending gravity low, intersecting the Dove West trend. This survey will inform follow up work at Wickenburg during the September Quarter.

¹ The Company cautions that these samples were selectively taken from outcropping spodumene crystals strictly to confirm lithium contents within weathered samples. The samples are not considered representative of the exposed or any other portion of the Dove West pegmatite nor its overall grade.

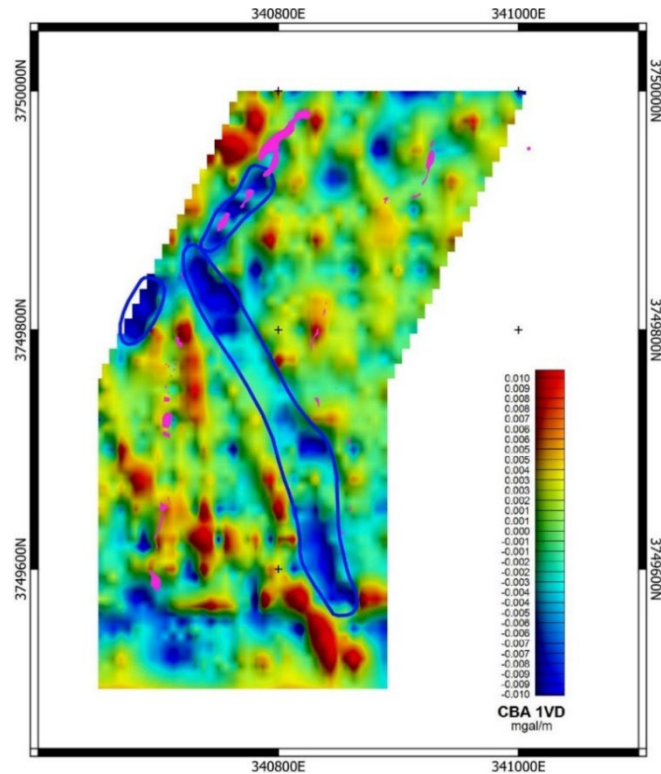


Figure 4: Phase 1 lithium-in-rock chip assay results for the Dove, Mammoth and Vulture pegmatite trends. Also shown are the locations of XRD samples DoveW-01 and 252067.

Keystone & Tinton West Projects, South Dakota and Wyoming, United States (100% PAT)

Rock chip samples (total: 44, additional 2 in Tinton area) have been collected from pegmatites in the Keystone region to provide muscovite and potassium feldspar crystals for Portable X-ray Fluorescence (pXRF) analysis (Figure 5).

The purpose of this work was to identify pegmatites exhibiting an evolved, potentially Li-fertile magma composition. Enrichment in rubidium (Rb), which substitutes for potassium in the crystal lattice of potassium feldspar and muscovite, is a genetic indicator of mineralised products from evolved S-type granitic magmas.²

Analysis of the results from this work is currently underway and a follow-up sampling program is planned for August 2023. This program will gather more representative material from pegmatites identified as being prospective for lithium mineralisation, with those samples submitted for ICP-MS analysis at a certified laboratory.

² Bradley DC & McCauley LL (2016) A preliminary deposit model for lithium-cesium-tantalum (LCT) pegmatites. US Geological Survey Open File Report 1008

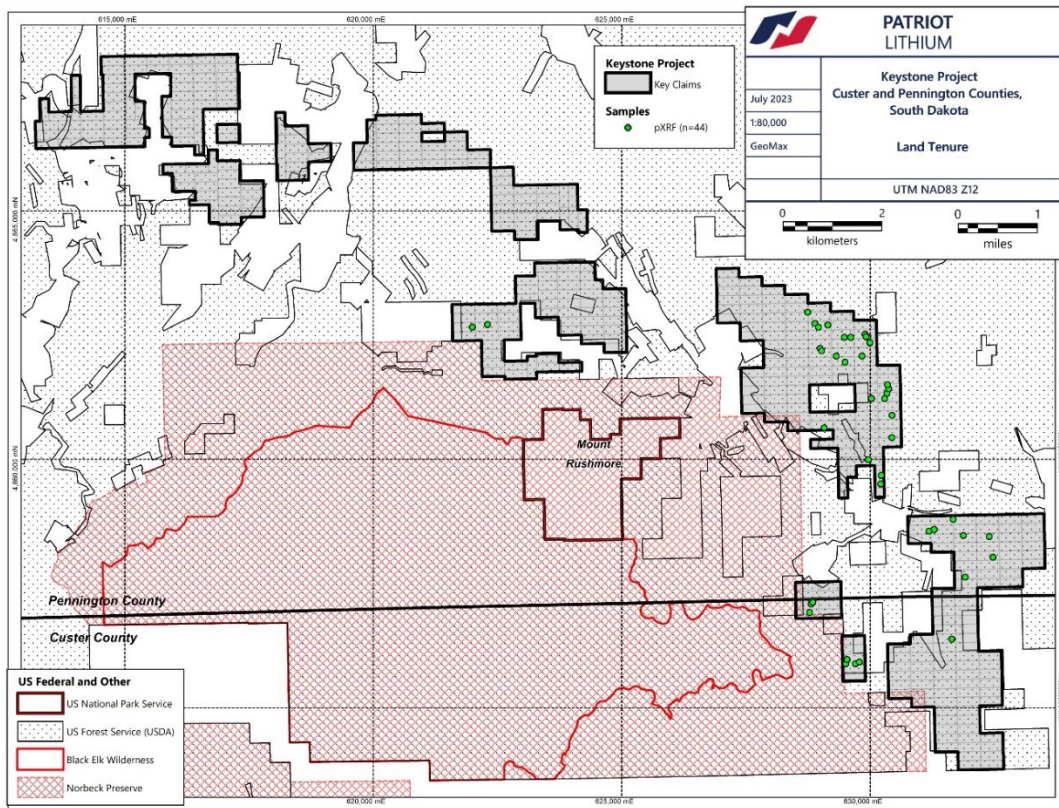


Figure 5: Keystone area pegmatite samples

PROJECT GENERATION

As announced on 8 June 2023 and after the quarter end on 12 July 2023 and 31 July 2023, the Company added additional claims Wickenburg, Gorman, Tinton West and Keystone.

At Wickenburg, 148 new lode mining claims (~12km²) were added, bringing the total project area to ~40km².

At the Gorman Project, claim holdings were expanded by ~34 km², bringing the total claim area to 349km².

At the Keystone Project, 176 new claims were added for 15 km², bringing the total project claim area to 34 km².

At Tinton West, 52 new claims were added for 4.3 km², bringing the total project claim area to 10 km².

PROJECT PORTFOLIO

The Patriot Lithium project portfolio includes ten (10) wholly owned projects, summarised as follows:

Keystone & Tinton West Projects, South Dakota and Wyoming, United States (100% PAT)

The Keystone Project encircles the town of Keystone, a small settlement in the central-eastern Black Hills, approximately 26km southwest of Rapid City, South Dakota.

The Keystone Project covers 34km² of lithium prospective ground in the prolific high-grade Black Hills lithium province, South Dakota. The Keystone claims cover poorly documented pegmatite

occurrences that lie along strike from and adjacent to the main historical lithium mines: Etta, Hugo, Edison and Bob Ingersoll.

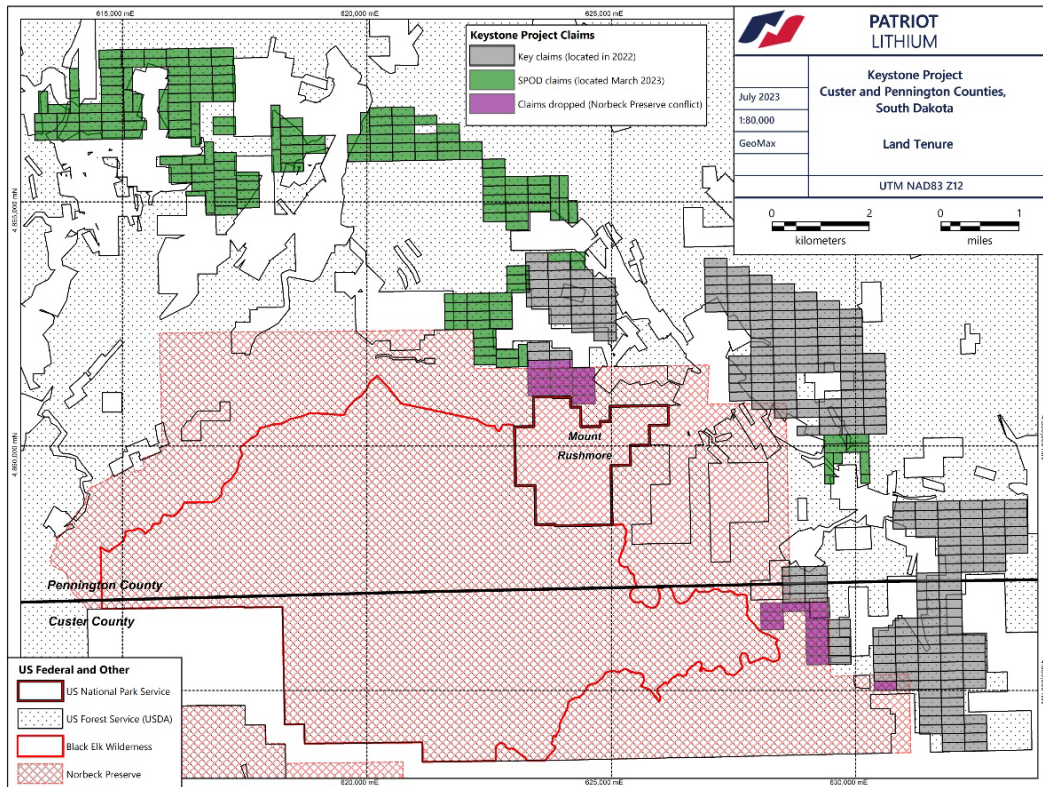


Figure 6: Map of the Company's lode mining claims at Keystone Project

The Tinton West Project is situated in the northern Black Hills straddling the border between South Dakota and Wyoming. The nearest town is Spearfish, which is located 18km to the northeast of the Tinton West Project. Rapid City is situated 72km to the southeast.

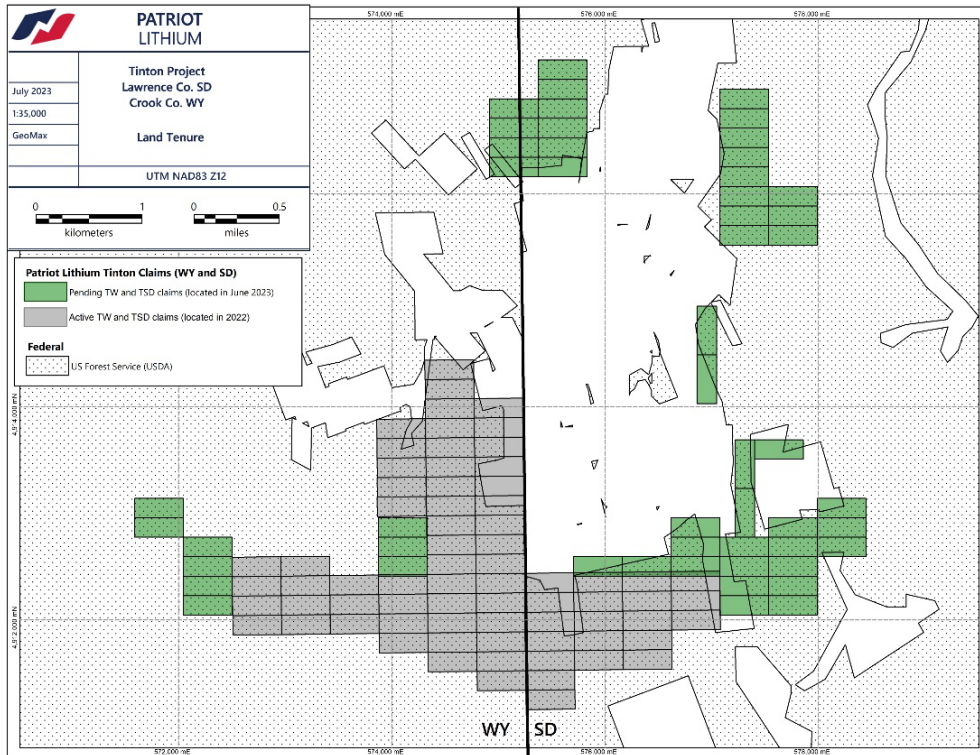


Figure 7: Map of the Company's lode mining claims at the Tinton (Tinton West Project)

The Tinton West Project covers 10km² of lithium prospective ground in the northwestern Black Hills of South Dakota and Wyoming, surrounding the main historical tin, tantalum and lithium mines: Giant Volney and Rough and Ready.

Wickenburg Project, Arizona, United States (100% PAT)

The Wickenburg Project is in Maricopa County, Arizona, approximately 10km south of Wickenburg and 70km northwest of Phoenix, Arizona's state capital and the fifth largest city in the United States. The Arizona Pegmatite Belt, and underexplored pegmatite swarms at Wickenburg and San Domingo in particular, is considered an emerging, highly prospective LCT pegmatite province.

The Wickenburg Project covers a total area of ~40km² located within the Pegmatite Belt of Arizona. The Wickenburg Project covers poorly documented pegmatite occurrences that lie along strike from and adjacent to the Lucky Mica lithium-caesium-tantalum (LCT) pegmatite and the San Domingo (also known as White Picacho) LCT pegmatite district to the east-northeast.

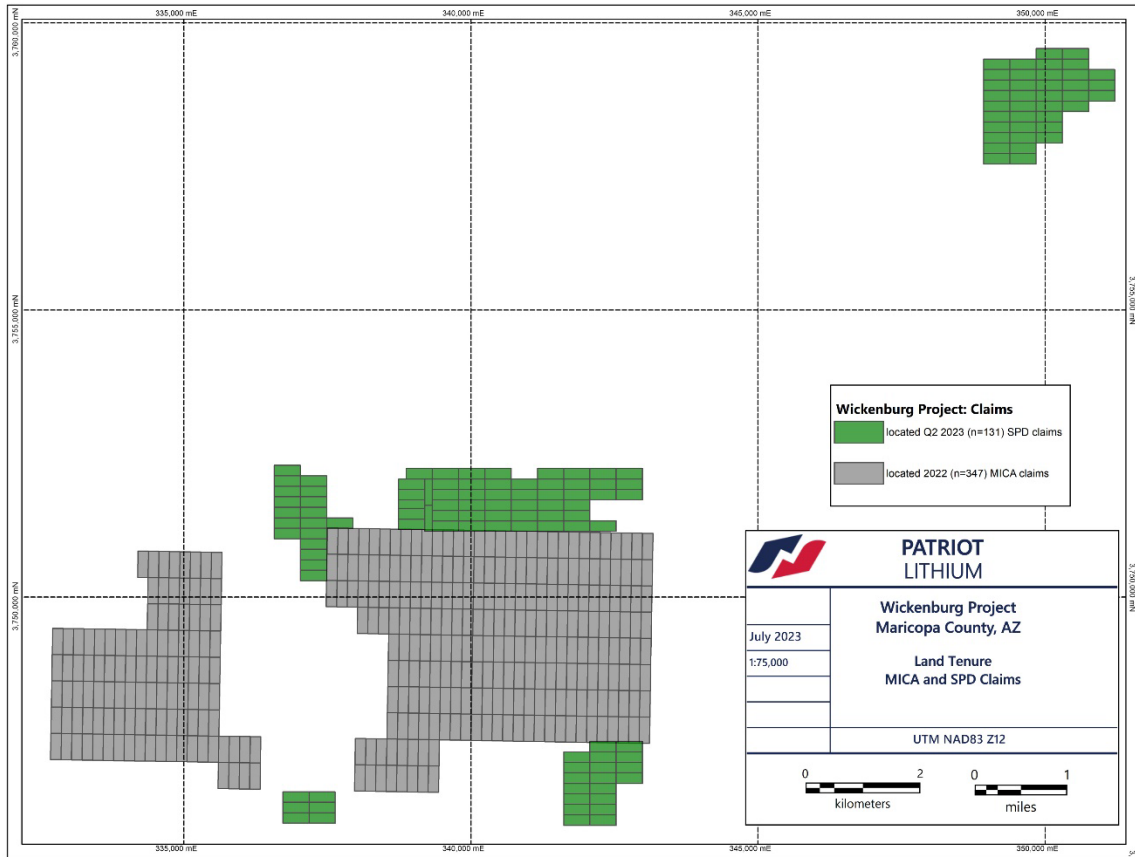


Figure 8: New Wickenburg tenement claims in relation to existing claims.

Ontario Projects, NW Ontario, Canada (100% PAT)

The Company has assembled seven (7) projects (Figure 9) in Ontario, Canada.

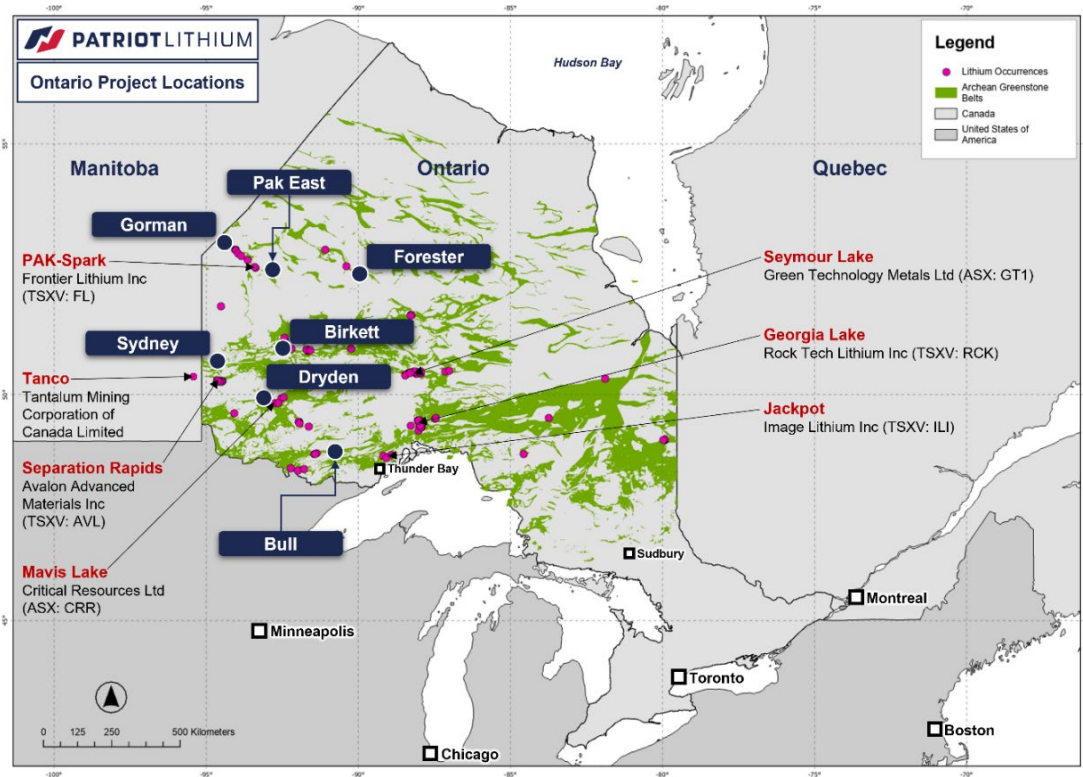


Figure 9: Map illustrating the locations of Patriot's Ontario Projects, also showing the known lithium occurrences and Archean greenstone belts. Significant lithium projects are labelled.

Gorman Project, NW Ontario, Canada (100% PAT)

The Gorman Project (Figure 10) now includes mining claims with a total area of ~349 km². The claims are in an emerging lithium district along trend from the PAK-Spark lithium project (26Mt @ 1.6% Li₂O Measured & Indicated + 32.5Mt @ 1.4% Li₂O Inferred)³, one of North America's largest and highest grade spodumene resources. Frontier Lithium has partnered with the Ontario government and First Nation communities to deliver major infrastructure upgrades, with power plant and road construction projects planned or underway.

The emerging 'Electric Avenue' lithium-caesium-tantalum (LCT) pegmatites over a total strike length of at least 60 km with potential for additional discoveries along strike. The 8km of surface outcropping that has been discovered on Patriot's Gorman Project is located ~65km to the NW of Frontier Lithium's PAK, Spark and Bolt LCT pegmatites and ~39km from Frontier Lithium's Pennock Lake LCT pegmatite. The LCT and rare metals pegmatites, recently identified by Midex Resources⁴ occur between 2.5 to 23km of PAT's Gorman Project and their presence strengthen the theory of a trend extending towards the north-west where the Gorman pegmatites have been identified.

³ Frontier Lithium Corporate Presentation February 2023 (<https://www.frontierlithium.com/investors-1>).

⁴ Midex Resources Limited Corporate Presentation Q4 2022 (<https://www.midexresources.com/>).

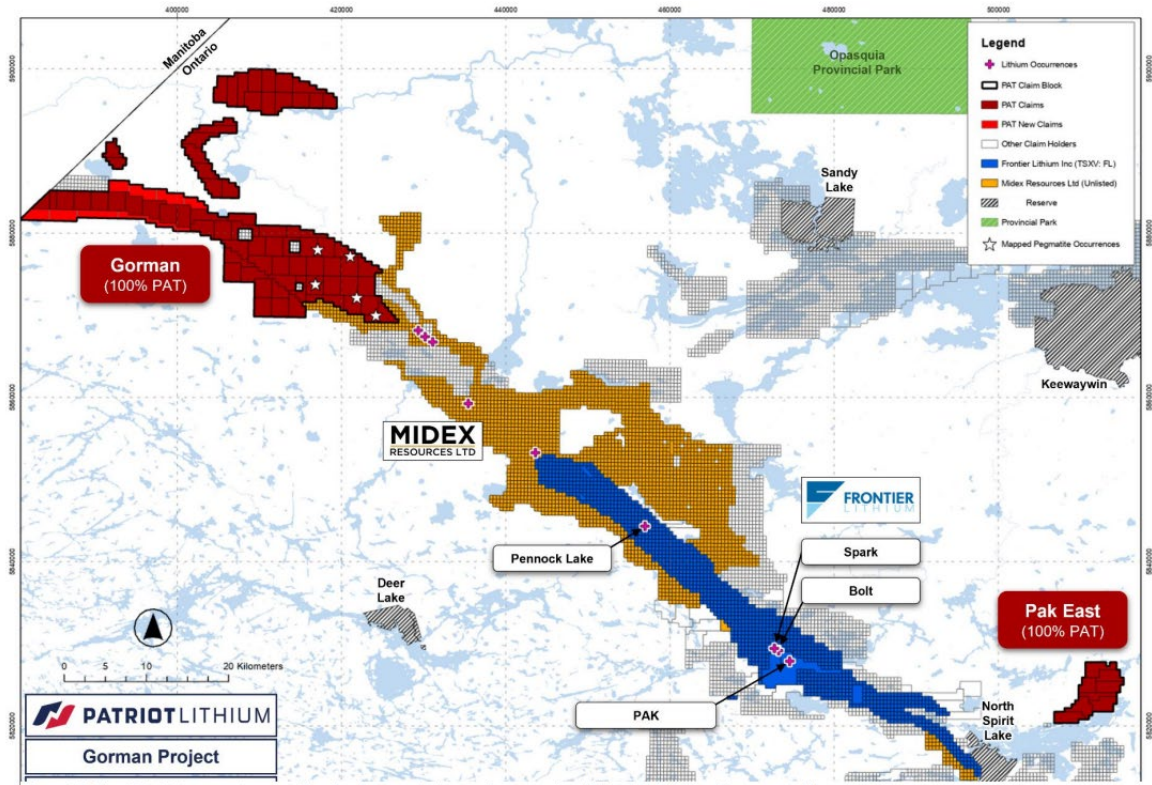


Figure 10: Gorman and Pak East Project locations relative to Midex Resources Ltd and Frontier Lithium Ltd nearby.

The Gorman Project covers a ~45km-long segment of the Favourable Lake greenstone belt, which forms part of the Sachigo Terrane, Archean Superior Craton. The terrane is bound by the Bearhead Lake fault zone, a regional-scale structure that is interpreted as a first-order control on the emplacement of LCT pegmatites and their parental granitic intrusions.

The Pak East Project, NW Ontario, Canada (100% PAT)

The Pak East Project (Figure 10) covers claims with a total area of ~34km². The Project is situated ~33km E of Frontier Lithium's PAK deposit.

The Pak East Project covers a 9km-long segment of the North Spirit Lake greenstone belt, which forms part of the Sachigo Terrane, Archean Superior Craton. The greenstone belt is dissected by the North Spirit Lake fault zone, interpreted by PAT as a splay fault off the regional-scale Bearhead fault zone, an important first-order control on the emplacement of the nearby PAK and Spark LCT pegmatites and their parental granitic intrusions. The geology of the Pak East Project is dominated by mafic-ultramafic and felsic volcanic rocks, preferred host rocks in many Archean LCT pegmatite systems. These greenstone successions are juxtaposed against basement granites. Previous mapping⁵ located numerous pegmatites, identified as simple quartz-feldspar pegmatites and more complex muscovite-tourmaline pegmatites.

Forester Project, NW Ontario, Canada (100% PAT)

The Forester Project (Figure 11) covers mining claims with a total area of ~145km². The Project is situated ~17km SE of Newmont Corporation's (NYSE: NEM) Musselwhite gold mine where diamond core drilling completed in the year 2000 identified a columbite-tantalite- and

⁵ Wood, J. (1972). North Spirit Lake area (eastern part), District of Kenora, Patricia portion. Ontario Division of Mines, Preliminary Map P760, scale 1 inch to ¼ mile.

spodumene-bearing pegmatite swarm within an area of at least 6km by 4km, demonstrating the hard rock lithium potential of the broader district (Taylor and Henham, 2001)⁶.

The Forester Project covers a ~20km-long segment of the North Caribou greenstone belt, which forms part of the North Caribou Terrane, Archean Superior Craton. The terrane is bound by the Akow Lake fault zone, a regional-scale structure that may have played an important first- order control on the emplacement of LCT pegmatites and their parental granitic intrusions.

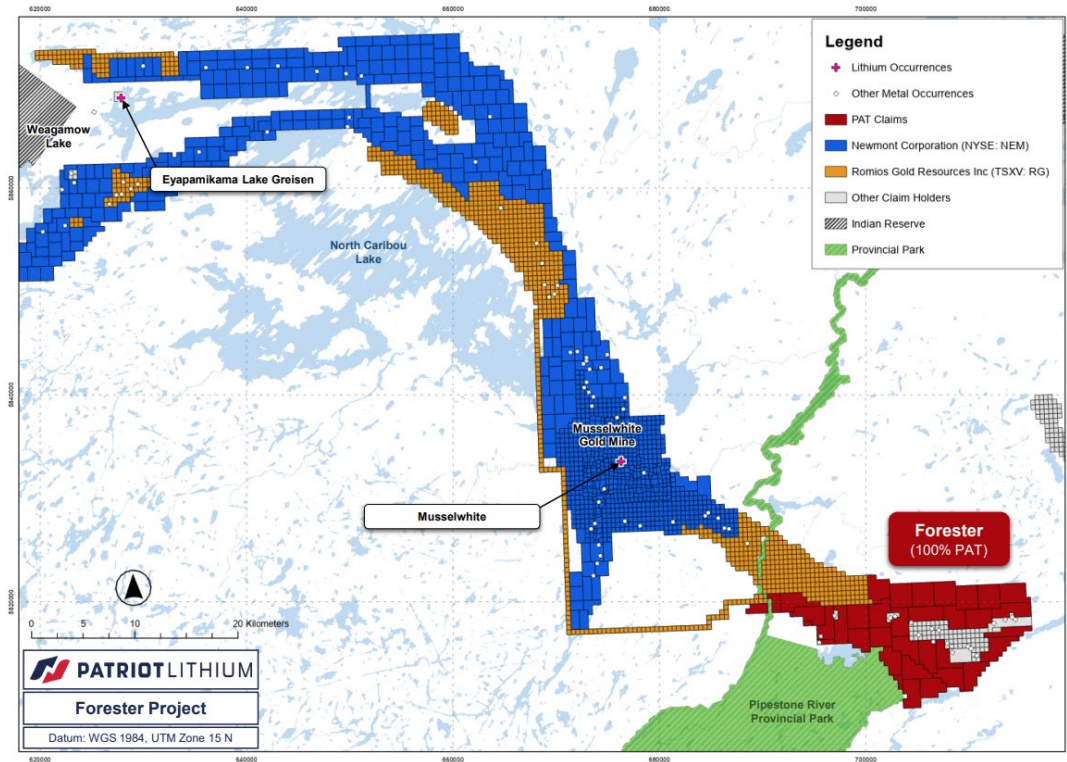


Figure 11: Forester Project Location

Birkett Project, NW Ontario, Canada (100% PAT)

The Birkett Project (Figure 12), comprising of mining claims covering an area of ~25km², is located west of the Allison Lake Batholith and a series of pegmatite swarms, known as the Allison Lake and Jubilee Lake pegmatite fields, along the western margin of the batholith.

The Birkett Project covers a ~9km-long segment of the Birch-Uchi greenstone belt, which forms part of the Uchi Terrane, Archean Superior Craton and is between ~1.2 to 7km from the western margin of the multiphase Allison Lake Batholith.

Field work by Green Technology Metals⁷ culminated in the identification of the spodumene-bearing Ouroboros LCT pegmatites, proving that spodumene pegmatites exist in the prospective corridor.

⁶ Taylor, RP, Henham, R. (2001). The nature and distribution of tantalum-bearing minerals in newly discovered, rare-element pegmatites at the Musselwhite mine, north-western Ontario. *Exploration and Mining Geology*, 10(1-2), 85-93.

⁷ Green Technology Metals Ltd ASX announcement 24 January 2022.

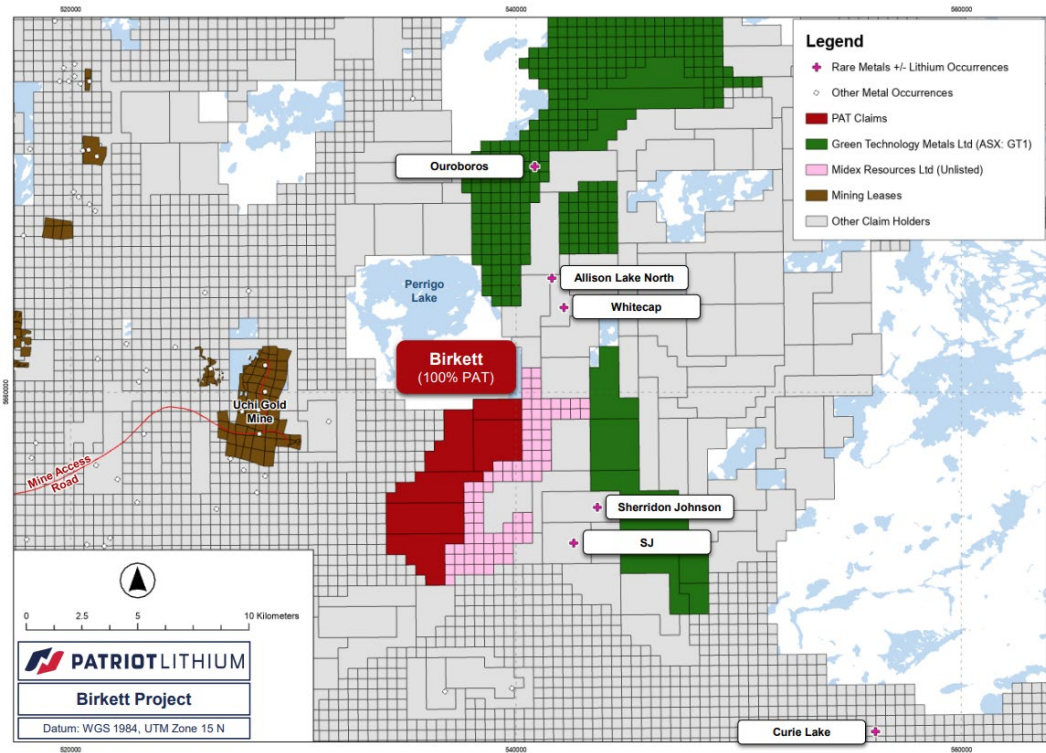


Figure 12: Birkett Project Location

Dryden Project, NW Ontario, Canada (100% PAT)

Dryden (Figure 13) covers mining claims with a total area of ~161km². The Project encircles the city of Dryden, on the Trans-Canada Highway midway between Winnipeg, Manitoba, and Thunder Bay, Ontario. The southeastern blocks of the Dryden Projects are 2.5km S and 3.9km NW of Critical Resources' (ASX: CRR) Mavis Lake project.

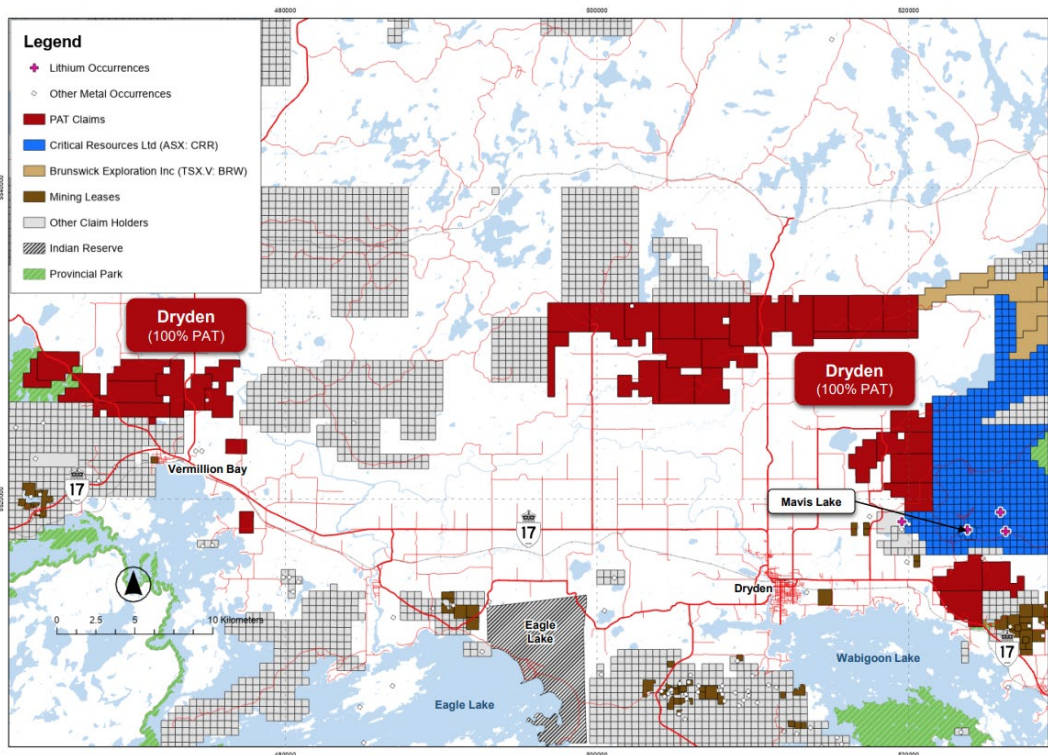


Figure 13: Dryden Project location

Bull Project, NW Ontario, Canada (100% PAT)

The Bull Project (Figure 14) covers mining claims with a total area of ~142km². The Project is situated 165km WNW of Thunder Bay, the most populous municipality in NW Ontario, and 8km N of the Trans-Canada Highway. The Niobe-Nym Lakes LCT pegmatites (Gilbert Lake, Nickleby Lake and Aramis Lake) are located ~30km to the W.

Geologically, the Bull Project sits along the Quetico fault zone, a major suture zone that separates the Quetico and Marmion terranes. Numerous granite pegmatites and pegmatitic granites have been mapped⁸ within the Bull Project, providing excellent early guidance to prospective areas within this large tenement area.

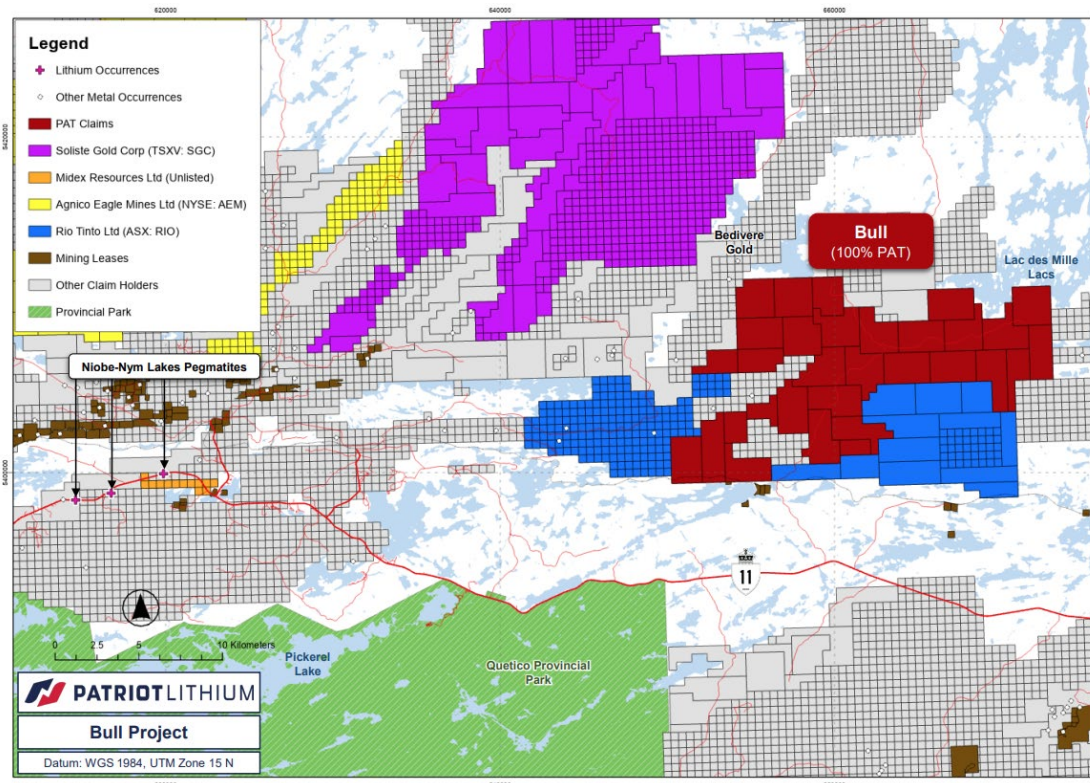


Figure 14: Bull Project location

Sydney Project, NW Ontario, Canada (100% PAT)

The Sydney Project (Figure 15) covers mining claims with a total area of ~342km². The Project is located ~43km NE of the operating, globally significant Tanco lithium, caesium, and tantalum mine in neighbouring Manitoba. The mine has been in commercial operation for over 50 years.

The Sydney Project lies along the Sydney Lake fault zone, a regional-scale structure that separates the Uchi Terrane in the N from the English River Terrane in the S. The recently staked Sydney claims and broader area comprise numerous mapped^{9,10} pegmatites and pegmatitic two-mica granite, which are known to be fertile as little as 35km to the S, the locality of the Separation Rapids LCT swarm and deposit.

⁸ Irvine, T.N. (1960). Lac Des Mille Lacs Area (west half), District of Thunder Bay. Ontario Department of Mines, Preliminary Map P88, scale 1 inch to 1 mile.

⁹ Breaks, F.W., Bond, W.D., McWilliams, G.H., Gower, C.F., Stone, D. (1975). Operation Kenora-Sydney Lake, Eagle-Sydney Lakes Sheet, District of Kenora. Ontario Division of Mines, Preliminary Map P1026, scale 1 inch to 1 mile.

¹⁰ Breaks, F.W., Bond, W.D., McWilliams, G.H., Gower, C.F., Stone, D. (1975). Operation Kenora-Sydney Lake, Pakwash-Longlegged Lakes Sheet, District of Kenora. Ontario Division of Mines, Preliminary Map P1027, scale 1 inch to 1 mile.

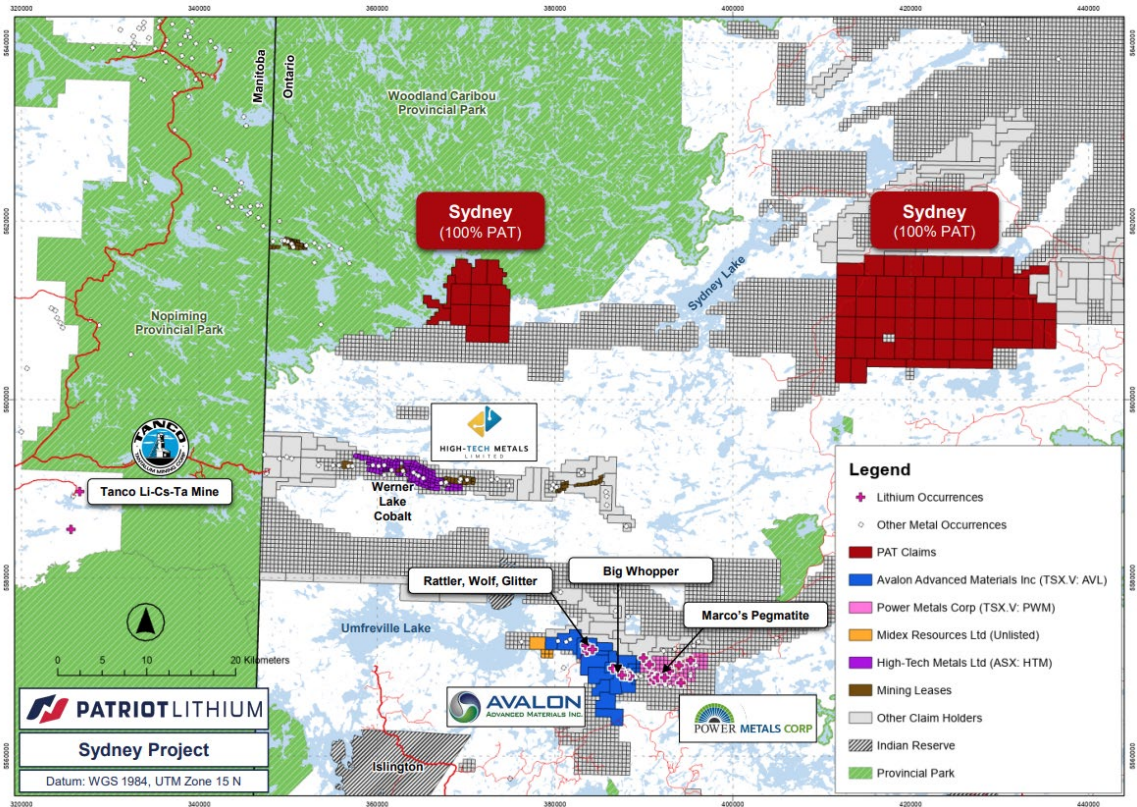


Figure 15: Sydney Project location

CORPORATE

In April 2023, Mr Nick Vickery commenced his appointment as Managing Director and Chief Executive Officer. Mr Vickery brings significant lithium related corporate experience, most recently from his senior executive roles with Covalent Lithium.

To lead the exploration of Patriot's Ontario Projects, Mr Phil Smerchanski of Accretive Metals Advisory was appointed during the quarter. To support and execute Patriot's exploration programs, Equity Exploration Ltd, experts in remote exploration in Ontario, were engaged to run an initial two-phase reconnaissance program under the supervision of Mr Smerchanski.

Key expenditure during the quarter comprised salaries and wages and the commencement of exploration and evaluation activities.

As at 30 June 2023, Patriot Limited held cash reserves of ~\$5.1M.

For the purpose of Listing Rule 5.3.1, details of the Company's group exploration activities for the quarter, including any material developments or material changes in those activities, and a summary of the expenditure incurred on those activities is detailed above and below.

For the purpose of Listing Rule 5.3.2, the Company confirms that there were no mining production and development activities during the quarter by the Company or its subsidiaries.

Related Party Transactions

In accordance with ASX Listing Rules 4.7C.3 payments to related parties of the entity and their associates outlined in the Company's Appendix 5B for the quarter relate to Directors fees.

Prospectus – Proposed Use of Funds

In accordance with ASX Listing Rule 5.3.4, the Company provides the following comparison of its actual expenditure on the individual items in the "use of funds" statement in its IPO Prospectus since the date of its admission to ASX against the estimated expenditure on those items in the "use of funds" statement in the IPO Prospectus and an explanation of any material variances. The material variances are due to the Company only being admitted to the Official List of ASX on 9 December 2022.

Item	Proposed Use of Funds	Actual Use of Funds	Variance
Exploration at the Keystone Project	\$2,095,000	\$249,010	\$1,845,990
Exploration at the Tinton West Project	\$1,081,000	\$70,855	\$1,010,145
Exploration at the Wickenburg Project	\$1,920,000	\$1,032,304	\$887,696
New project identification and acquisition	\$1,300,000	\$1,398,736	-\$98,736
Expenses of the Offers	\$959,939	\$1,088,334	-\$128,395
Working capital	\$2,796,630	\$1,312,862	\$1,483,768
Total	\$10,152,569	\$5,152,102	\$5,000,467

Performance Rights

A summary of the Performance Rights on issue at the end of the quarter is outlined below.

Class	Milestone	Expiry	Number	Vested (Yes/No)
Class A Performance Rights	Each Class A Performance Right will vest and convert (at the election of the holder) into one Share upon the Company achieving a volume weighted average price for 20 consecutive trading days (20 Day VWAP) exceeding \$0.40.	Five (5) years from the date of issue.	2,375,000	Yes
Class B Performance Rights	Each Class B Performance Right will vest and convert (at the election of the holder) into one Share upon the Company achieving a 20 Day VWAP exceeding \$0.60.	Five (5) years from the date of issue.	2,375,000	No
Class C Performance Rights	Each Class C Performance Right will vest and convert (at the election of the holder) into one Share upon the Company achieving a 20 Day VWAP exceeding \$0.70.	Five (5) years from the date of issue.	2,375,000	No
Total			7,125,000	

TENEMENT SCHEDULE

Patriot Lithium Claim Holdings June 2023 Quarter End

Project	Location	Claims
Keystone Projects	South Dakota, USA	407
Tinton West Projects	South Dakota, USA	121
Wickenburg Project	Arizona, USA	478
Birkett Project	Ontario, Canada	6
Bull Project	Ontario, Canada	31
Dryden Project	Ontario, Canada	38
Forester Project	Ontario, Canada	36
Gorman Project	Ontario, Canada	81
Pak East Project	Ontario, Canada	8
Sydney Project	Ontario, Canada	70
Total		1276

COMPLIANCE STATEMENT

The information in this report that relates to Exploration Results for the Keystone Project, Tinton West Projects, Wickenburg Project and Ontario Projects is extracted from the ASX Announcements listed below which are available on the Company website www.patriotlithium.com and the ASX website (ASX code: PAT):

Date	Announcement Title
31 July 2023	Exploration Update, High grade rock chip samples at Gorman
12 July 2023	8 KM Pegmatite Trend Located at Gorman Project in Ontario
27 June 2023	Approval to Commence Maiden Drilling Program at Wickenburg
8 June 2023	Significant Lithium Anomalism at Wickenburg, Arizona
15 May 2023	Commencement of Ontario Exploration Program
12 April 2023	Commencement of Managing Director and CEO
20 March 2023	Highly Prospective Lithium Projects Secured in Ontario
2 March 2023	Wickenburg Exploration Almost Triples Dove Pegmatite Strike
7 February 2023	Wickenburg Lithium Exploration Uncovers Spodumene Targets
1 February 2023	Managing Director and Exploration Team Appointments
9 January 2023	Lithium Project Acquired in Tier 1 District in Ontario
21 December 2022	Lithium Exploration Underway After Successful ASX Listing

The Company confirms that it is not aware of any new information or data that materially affects the information included in the original market announcements and that all material assumptions and technical parameters underpinning the estimates in the market announcements continue to apply and have not materially changed. The Company confirm that form and context in which the Competent Person's findings are presented have not been materially modified from the original market announcements.

This announcement is authorised for ASX release by Nicholas Vickery, Managing Director of the Company.

ENDS

For more information, please contact:

Nicholas Vickery
Patriot Lithium Limited
+61 8 9322 7600

Jonathan van Hazel
Citadel-MAGNUS
+61 411 564 969

ABOUT PATRIOT LITHIUM LIMITED

Patriot Lithium Limited is primarily focused on the exploration of high-grade, hard rock lithium projects located in the prolific **Black Hills** lithium district of South Dakota and Wyoming and the **Pegmatite Belt** of Arizona, United States of America, as well as highly prospective **Archean Greenstone Belts** in northwest Ontario, Canada. The Company intends to build the size and scale of these properties by staking additional lithium prospective ground and through pragmatic assessment of potential acquisition opportunities. Patriot is working with US-based exploration, generative and land management teams to progress exploration and project development.

Competent Person's Statement

The information in this announcement that relates to Exploration Results is based on information compiled and conclusions derived by Dr Oliver Kreuzer, who is a Member (#2762) and Registered Professional Geologist (RPGeo #10073) of the Australian Institute of Geoscientists (AIG) and a Member (#208656) of the Australasian Institute of Mining and Metallurgy (AusIMM). Dr Kreuzer is an employee of Patriot Lithium Limited and has sufficient experience which is relevant to the style of mineralisation and types of deposit under consideration and to the activity being undertaken to qualify as a Competent Person as defined in the 2012 Edition of the Joint Ore Reserves Committee (JORC) Australasian Code for Reporting of Exploration Results, Mineral Resources and Ore Reserves. Dr Kreuzer consents to the inclusion in the report of the matters based on his information in the form and context in which it appears.

Forward Looking Statements

Some statements in this announcement regarding estimates or future events are forward-looking statements. Forward-looking statements include, but are not limited to, statements preceded by words such as "planned", "expected", "projected", "estimated", "may", "scheduled", "intends", "anticipates", "believes", "potential", "could", "nominal", "conceptual" and similar expressions. Forward-looking statements, opinions and estimates included in this announcement are based on assumptions and contingencies which are subject to change without notice, as are statements about market and industry trends, which are based on interpretations of current market conditions. Statements regarding plans with respect to the Company's mineral properties may also contain forward looking statements.

Forward-looking statements are provided as a general guide only and should not be relied on as a guarantee of future performance. Forward-looking statements may be affected by a range of variables that could cause actual results to differ from estimated results expressed or implied by such forward-looking statements. These risks and uncertainties include but are not limited to liabilities inherent in exploration and development activities, geological, mining, processing and technical problems, the inability to obtain exploration and mine licenses, permits and other regulatory approvals required in connection with operations, competition for among other things, capital, undeveloped lands and skilled personnel; incorrect assessments of prospectivity and the value of acquisitions; the inability to identify further mineralisation at the Company's tenements, changes in commodity prices and exchange rates; currency and interest rate fluctuations; various events which could disrupt exploration and development activities, operations and/or the transportation of mineral products, including labour stoppages and severe weather conditions; the demand for and availability of transportation services; the ability to secure adequate financing and management's ability to anticipate and manage the foregoing factors and risks and various other risks. There can be no assurance that forward-looking statements will prove to be correct.

APPENDIX 1 - TENEMENT SCHEDULE - DETAIL

Patriot Lithium tenement/claim holding at 30 June 2023 quarter end is set out below as required by listing rule 5.3.3. All the claims are held by New Energy Metals (US) Inc and Patriot Lithium (Canada) Inc (wholly owned subsidiary companies of Patriot Lithium Limited).

Serial No.	Claim Name	Claim Number	Holder	Patriot Ownership (at end of quarter)	Change in Ownership
AZ105750300	MICA	1	New Energy Metals (US) Inc	100%	Nil
AZ105750301	MICA	2	New Energy Metals (US) Inc	100%	Nil
AZ105750302	MICA	3	New Energy Metals (US) Inc	100%	Nil
AZ105750303	MICA	4	New Energy Metals (US) Inc	100%	Nil
AZ105750304	MICA	5	New Energy Metals (US) Inc	100%	Nil
AZ105750305	MICA	6	New Energy Metals (US) Inc	100%	Nil
AZ105750306	MICA	7	New Energy Metals (US) Inc	100%	Nil
AZ105750307	MICA	8	New Energy Metals (US) Inc	100%	Nil
AZ105750308	MICA	9	New Energy Metals (US) Inc	100%	Nil
AZ105750309	MICA	10	New Energy Metals (US) Inc	100%	Nil
AZ105750310	MICA	11	New Energy Metals (US) Inc	100%	Nil
AZ105750311	MICA	12	New Energy Metals (US) Inc	100%	Nil
AZ105750312	MICA	13	New Energy Metals (US) Inc	100%	Nil
AZ105750313	MICA	14	New Energy Metals (US) Inc	100%	Nil
AZ105750314	MICA	15	New Energy Metals (US) Inc	100%	Nil
AZ105750315	MICA	16	New Energy Metals (US) Inc	100%	Nil
AZ105750316	MICA	17	New Energy Metals (US) Inc	100%	Nil
AZ105750317	MICA	18	New Energy Metals (US) Inc	100%	Nil
AZ105750318	MICA	19	New Energy Metals (US) Inc	100%	Nil
AZ105750319	MICA	20	New Energy Metals (US) Inc	100%	Nil
AZ105750320	MICA	21	New Energy Metals (US) Inc	100%	Nil
AZ105750321	MICA	22	New Energy Metals (US) Inc	100%	Nil
AZ105750322	MICA	23	New Energy Metals (US) Inc	100%	Nil
AZ105750323	MICA	24	New Energy Metals (US) Inc	100%	Nil
AZ105750324	MICA	25	New Energy Metals (US) Inc	100%	Nil
AZ105750325	MICA	26	New Energy Metals (US) Inc	100%	Nil
AZ105750326	MICA	27	New Energy Metals (US) Inc	100%	Nil
AZ105750327	MICA	28	New Energy Metals (US) Inc	100%	Nil
AZ105750328	MICA	29	New Energy Metals (US) Inc	100%	Nil
AZ105750329	MICA	30	New Energy Metals (US) Inc	100%	Nil
AZ105750330	MICA	31	New Energy Metals (US) Inc	100%	Nil
AZ105750331	MICA	32	New Energy Metals (US) Inc	100%	Nil
AZ105750332	MICA	33	New Energy Metals (US) Inc	100%	Nil
AZ105750333	MICA	34	New Energy Metals (US) Inc	100%	Nil
AZ105750334	MICA	35	New Energy Metals (US) Inc	100%	Nil
AZ105750335	MICA	36	New Energy Metals (US) Inc	100%	Nil

AZ105750336	MICA	37	New Energy Metals (US) Inc	100%	Nil
AZ105750337	MICA	38	New Energy Metals (US) Inc	100%	Nil
AZ105750338	MICA	39	New Energy Metals (US) Inc	100%	Nil
AZ105750339	MICA	40	New Energy Metals (US) Inc	100%	Nil
AZ105750340	MICA	41	New Energy Metals (US) Inc	100%	Nil
AZ105750341	MICA	42	New Energy Metals (US) Inc	100%	Nil
AZ105750342	MICA	43	New Energy Metals (US) Inc	100%	Nil
AZ105750343	MICA	44	New Energy Metals (US) Inc	100%	Nil
AZ105750344	MICA	45	New Energy Metals (US) Inc	100%	Nil
AZ105750345	MICA	46	New Energy Metals (US) Inc	100%	Nil
AZ105750346	MICA	47	New Energy Metals (US) Inc	100%	Nil
AZ105750347	MICA	48	New Energy Metals (US) Inc	100%	Nil
AZ105750348	MICA	49	New Energy Metals (US) Inc	100%	Nil
AZ105750349	MICA	50	New Energy Metals (US) Inc	100%	Nil
AZ105750350	MICA	51	New Energy Metals (US) Inc	100%	Nil
AZ105750351	MICA	52	New Energy Metals (US) Inc	100%	Nil
AZ105750352	MICA	53	New Energy Metals (US) Inc	100%	Nil
AZ105750353	MICA	54	New Energy Metals (US) Inc	100%	Nil
AZ105750354	MICA	55	New Energy Metals (US) Inc	100%	Nil
AZ105750355	MICA	56	New Energy Metals (US) Inc	100%	Nil
AZ105750356	MICA	57	New Energy Metals (US) Inc	100%	Nil
AZ105750357	MICA	58	New Energy Metals (US) Inc	100%	Nil
AZ105750358	MICA	59	New Energy Metals (US) Inc	100%	Nil
AZ105750359	MICA	60	New Energy Metals (US) Inc	100%	Nil
AZ105750360	MICA	61	New Energy Metals (US) Inc	100%	Nil
AZ105750361	MICA	62	New Energy Metals (US) Inc	100%	Nil
AZ105750362	MICA	63	New Energy Metals (US) Inc	100%	Nil
AZ105750363	MICA	64	New Energy Metals (US) Inc	100%	Nil
AZ105750364	MICA	65	New Energy Metals (US) Inc	100%	Nil
AZ105750365	MICA	66	New Energy Metals (US) Inc	100%	Nil
AZ105750366	MICA	67	New Energy Metals (US) Inc	100%	Nil
AZ105750367	MICA	68	New Energy Metals (US) Inc	100%	Nil
AZ105750368	MICA	69	New Energy Metals (US) Inc	100%	Nil
AZ105750369	MICA	70	New Energy Metals (US) Inc	100%	Nil
AZ105750370	MICA	71	New Energy Metals (US) Inc	100%	Nil
AZ105750371	MICA	72	New Energy Metals (US) Inc	100%	Nil
AZ105750372	MICA	73	New Energy Metals (US) Inc	100%	Nil
AZ105750373	MICA	74	New Energy Metals (US) Inc	100%	Nil
AZ105750374	MICA	75	New Energy Metals (US) Inc	100%	Nil
AZ105750375	MICA	76	New Energy Metals (US) Inc	100%	Nil
AZ105750376	MICA	77	New Energy Metals (US) Inc	100%	Nil
AZ105750377	MICA	78	New Energy Metals (US) Inc	100%	Nil
AZ105750378	MICA	79	New Energy Metals (US) Inc	100%	Nil
AZ105750379	MICA	80	New Energy Metals (US) Inc	100%	Nil

AZ105750380	MICA	81	New Energy Metals (US) Inc	100%	Nil
AZ105750381	MICA	82	New Energy Metals (US) Inc	100%	Nil
AZ105750382	MICA	83	New Energy Metals (US) Inc	100%	Nil
AZ105750383	MICA	84	New Energy Metals (US) Inc	100%	Nil
AZ105750384	MICA	85	New Energy Metals (US) Inc	100%	Nil
AZ105750385	MICA	86	New Energy Metals (US) Inc	100%	Nil
AZ105750386	MICA	87	New Energy Metals (US) Inc	100%	Nil
AZ105750387	MICA	88	New Energy Metals (US) Inc	100%	Nil
AZ105750388	MICA	89	New Energy Metals (US) Inc	100%	Nil
AZ105750389	MICA	90	New Energy Metals (US) Inc	100%	Nil
AZ105750390	MICA	91	New Energy Metals (US) Inc	100%	Nil
AZ105750391	MICA	92	New Energy Metals (US) Inc	100%	Nil
AZ105750392	MICA	93	New Energy Metals (US) Inc	100%	Nil
AZ105750393	MICA	94	New Energy Metals (US) Inc	100%	Nil
AZ105750394	MICA	95	New Energy Metals (US) Inc	100%	Nil
AZ105750395	MICA	96	New Energy Metals (US) Inc	100%	Nil
AZ105750396	MICA	97	New Energy Metals (US) Inc	100%	Nil
AZ105750397	MICA	98	New Energy Metals (US) Inc	100%	Nil
AZ105750398	MICA	99	New Energy Metals (US) Inc	100%	Nil
AZ105750399	MICA	100	New Energy Metals (US) Inc	100%	Nil
AZ105750400	MICA	101	New Energy Metals (US) Inc	100%	Nil
AZ105750401	MICA	102	New Energy Metals (US) Inc	100%	Nil
AZ105750402	MICA	103	New Energy Metals (US) Inc	100%	Nil
AZ105750403	MICA	104	New Energy Metals (US) Inc	100%	Nil
AZ105750404	MICA	105	New Energy Metals (US) Inc	100%	Nil
AZ105750405	MICA	106	New Energy Metals (US) Inc	100%	Nil
AZ105750406	MICA	107	New Energy Metals (US) Inc	100%	Nil
AZ105750407	MICA	108	New Energy Metals (US) Inc	100%	Nil
AZ105750408	MICA	109	New Energy Metals (US) Inc	100%	Nil
AZ105750409	MICA	110	New Energy Metals (US) Inc	100%	Nil
AZ105750410	MICA	111	New Energy Metals (US) Inc	100%	Nil
AZ105750411	MICA	112	New Energy Metals (US) Inc	100%	Nil
AZ105750412	MICA	113	New Energy Metals (US) Inc	100%	Nil
AZ105750413	MICA	114	New Energy Metals (US) Inc	100%	Nil
AZ105750414	MICA	115	New Energy Metals (US) Inc	100%	Nil
AZ105750415	MICA	116	New Energy Metals (US) Inc	100%	Nil
AZ105750416	MICA	117	New Energy Metals (US) Inc	100%	Nil
AZ105750417	MICA	118	New Energy Metals (US) Inc	100%	Nil
AZ105750418	MICA	119	New Energy Metals (US) Inc	100%	Nil
AZ105750419	MICA	120	New Energy Metals (US) Inc	100%	Nil
AZ105750420	MICA	121	New Energy Metals (US) Inc	100%	Nil
AZ105750421	MICA	122	New Energy Metals (US) Inc	100%	Nil
AZ105750422	MICA	123	New Energy Metals (US) Inc	100%	Nil
AZ105750423	MICA	124	New Energy Metals (US) Inc	100%	Nil

AZ105750424	MICA	125	New Energy Metals (US) Inc	100%	Nil
AZ105750425	MICA	126	New Energy Metals (US) Inc	100%	Nil
AZ105750426	MICA	127	New Energy Metals (US) Inc	100%	Nil
AZ105750427	MICA	128	New Energy Metals (US) Inc	100%	Nil
AZ105750428	MICA	129	New Energy Metals (US) Inc	100%	Nil
AZ105750429	MICA	130	New Energy Metals (US) Inc	100%	Nil
AZ105750430	MICA	131	New Energy Metals (US) Inc	100%	Nil
AZ105750431	MICA	132	New Energy Metals (US) Inc	100%	Nil
AZ105750432	MICA	133	New Energy Metals (US) Inc	100%	Nil
AZ105750433	MICA	134	New Energy Metals (US) Inc	100%	Nil
AZ105750434	MICA	135	New Energy Metals (US) Inc	100%	Nil
AZ105750435	MICA	136	New Energy Metals (US) Inc	100%	Nil
AZ105750436	MICA	137	New Energy Metals (US) Inc	100%	Nil
AZ105750437	MICA	138	New Energy Metals (US) Inc	100%	Nil
AZ105750438	MICA	139	New Energy Metals (US) Inc	100%	Nil
AZ105750439	MICA	140	New Energy Metals (US) Inc	100%	Nil
AZ105750440	MICA	141	New Energy Metals (US) Inc	100%	Nil
AZ105750441	MICA	142	New Energy Metals (US) Inc	100%	Nil
AZ105750442	MICA	143	New Energy Metals (US) Inc	100%	Nil
AZ105750443	MICA	144	New Energy Metals (US) Inc	100%	Nil
AZ105750444	MICA	145	New Energy Metals (US) Inc	100%	Nil
AZ105750445	MICA	146	New Energy Metals (US) Inc	100%	Nil
AZ105750446	MICA	147	New Energy Metals (US) Inc	100%	Nil
AZ105750447	MICA	148	New Energy Metals (US) Inc	100%	Nil
AZ105750448	MICA	149	New Energy Metals (US) Inc	100%	Nil
AZ105750449	MICA	150	New Energy Metals (US) Inc	100%	Nil
AZ105750450	MICA	151	New Energy Metals (US) Inc	100%	Nil
AZ105750451	MICA	152	New Energy Metals (US) Inc	100%	Nil
AZ105750452	MICA	153	New Energy Metals (US) Inc	100%	Nil
AZ105750453	MICA	154	New Energy Metals (US) Inc	100%	Nil
AZ105750454	MICA	155	New Energy Metals (US) Inc	100%	Nil
AZ105750455	MICA	156	New Energy Metals (US) Inc	100%	Nil
AZ105750456	MICA	157	New Energy Metals (US) Inc	100%	Nil
AZ105750457	MICA	158	New Energy Metals (US) Inc	100%	Nil
AZ105750458	MICA	159	New Energy Metals (US) Inc	100%	Nil
AZ105750459	MICA	160	New Energy Metals (US) Inc	100%	Nil
AZ105750460	MICA	161	New Energy Metals (US) Inc	100%	Nil
AZ105750461	MICA	162	New Energy Metals (US) Inc	100%	Nil
AZ105750462	MICA	163	New Energy Metals (US) Inc	100%	Nil
AZ105750463	MICA	164	New Energy Metals (US) Inc	100%	Nil
AZ105750464	MICA	165	New Energy Metals (US) Inc	100%	Nil
AZ105750465	MICA	166	New Energy Metals (US) Inc	100%	Nil
AZ105750466	MICA	167	New Energy Metals (US) Inc	100%	Nil
AZ105750467	MICA	168	New Energy Metals (US) Inc	100%	Nil

AZ105750468	MICA	169	New Energy Metals (US) Inc	100%	Nil
AZ105750469	MICA	170	New Energy Metals (US) Inc	100%	Nil
AZ105750470	MICA	171	New Energy Metals (US) Inc	100%	Nil
AZ105750471	MICA	172	New Energy Metals (US) Inc	100%	Nil
AZ105750472	MICA	173	New Energy Metals (US) Inc	100%	Nil
AZ105750473	MICA	174	New Energy Metals (US) Inc	100%	Nil
AZ105750474	MICA	175	New Energy Metals (US) Inc	100%	Nil
AZ105750475	MICA	176	New Energy Metals (US) Inc	100%	Nil
AZ105750476	MICA	177	New Energy Metals (US) Inc	100%	Nil
AZ105750477	MICA	178	New Energy Metals (US) Inc	100%	Nil
AZ105750478	MICA	179	New Energy Metals (US) Inc	100%	Nil
AZ105750479	MICA	180	New Energy Metals (US) Inc	100%	Nil
AZ105750480	MICA	181	New Energy Metals (US) Inc	100%	Nil
AZ105750481	MICA	182	New Energy Metals (US) Inc	100%	Nil
AZ105750482	MICA	183	New Energy Metals (US) Inc	100%	Nil
AZ105750483	MICA	184	New Energy Metals (US) Inc	100%	Nil
AZ105750484	MICA	185	New Energy Metals (US) Inc	100%	Nil
AZ105750485	MICA	186	New Energy Metals (US) Inc	100%	Nil
AZ105750486	MICA	187	New Energy Metals (US) Inc	100%	Nil
AZ105750487	MICA	188	New Energy Metals (US) Inc	100%	Nil
AZ105750488	MICA	189	New Energy Metals (US) Inc	100%	Nil
AZ105750489	MICA	190	New Energy Metals (US) Inc	100%	Nil
AZ105750490	MICA	191	New Energy Metals (US) Inc	100%	Nil
AZ105750491	MICA	192	New Energy Metals (US) Inc	100%	Nil
AZ105750492	MICA	193	New Energy Metals (US) Inc	100%	Nil
AZ105750493	MICA	194	New Energy Metals (US) Inc	100%	Nil
AZ105750494	MICA	195	New Energy Metals (US) Inc	100%	Nil
AZ105750495	MICA	196	New Energy Metals (US) Inc	100%	Nil
AZ105750496	MICA	197	New Energy Metals (US) Inc	100%	Nil
AZ105750497	MICA	198	New Energy Metals (US) Inc	100%	Nil
AZ105750498	MICA	199	New Energy Metals (US) Inc	100%	Nil
AZ105750499	MICA	200	New Energy Metals (US) Inc	100%	Nil
AZ105750500	MICA	201	New Energy Metals (US) Inc	100%	Nil
AZ105750501	MICA	202	New Energy Metals (US) Inc	100%	Nil
AZ105750502	MICA	203	New Energy Metals (US) Inc	100%	Nil
AZ105750503	MICA	204	New Energy Metals (US) Inc	100%	Nil
AZ105750504	MICA	205	New Energy Metals (US) Inc	100%	Nil
AZ105750505	MICA	206	New Energy Metals (US) Inc	100%	Nil
AZ105750506	MICA	207	New Energy Metals (US) Inc	100%	Nil
AZ105750507	MICA	208	New Energy Metals (US) Inc	100%	Nil
AZ105750508	MICA	209	New Energy Metals (US) Inc	100%	Nil
AZ105750509	MICA	210	New Energy Metals (US) Inc	100%	Nil
AZ105750510	MICA	211	New Energy Metals (US) Inc	100%	Nil
AZ105750511	MICA	212	New Energy Metals (US) Inc	100%	Nil

AZ105750512	MICA	213	New Energy Metals (US) Inc	100%	Nil
AZ105750513	MICA	214	New Energy Metals (US) Inc	100%	Nil
AZ105750514	MICA	215	New Energy Metals (US) Inc	100%	Nil
AZ105750515	MICA	216	New Energy Metals (US) Inc	100%	Nil
AZ105750516	MICA	217	New Energy Metals (US) Inc	100%	Nil
AZ105750517	MICA	218	New Energy Metals (US) Inc	100%	Nil
AZ105750518	MICA	219	New Energy Metals (US) Inc	100%	Nil
AZ105750519	MICA	220	New Energy Metals (US) Inc	100%	Nil
AZ105750520	MICA	221	New Energy Metals (US) Inc	100%	Nil
AZ105750521	MICA	222	New Energy Metals (US) Inc	100%	Nil
AZ105750522	MICA	223	New Energy Metals (US) Inc	100%	Nil
AZ105750523	MICA	224	New Energy Metals (US) Inc	100%	Nil
AZ105750524	MICA	225	New Energy Metals (US) Inc	100%	Nil
AZ105750525	MICA	226	New Energy Metals (US) Inc	100%	Nil
AZ105750526	MICA	227	New Energy Metals (US) Inc	100%	Nil
AZ105750527	MICA	228	New Energy Metals (US) Inc	100%	Nil
AZ105750528	MICA	229	New Energy Metals (US) Inc	100%	Nil
AZ105750529	MICA	230	New Energy Metals (US) Inc	100%	Nil
AZ105750530	MICA	231	New Energy Metals (US) Inc	100%	Nil
AZ105750531	MICA	232	New Energy Metals (US) Inc	100%	Nil
AZ105750532	MICA	233	New Energy Metals (US) Inc	100%	Nil
AZ105750533	MICA	234	New Energy Metals (US) Inc	100%	Nil
AZ105750534	MICA	235	New Energy Metals (US) Inc	100%	Nil
AZ105750535	MICA	236	New Energy Metals (US) Inc	100%	Nil
AZ105750536	MICA	237	New Energy Metals (US) Inc	100%	Nil
AZ105750537	MICA	238	New Energy Metals (US) Inc	100%	Nil
AZ105750538	MICA	239	New Energy Metals (US) Inc	100%	Nil
AZ105750539	MICA	240	New Energy Metals (US) Inc	100%	Nil
AZ105750540	MICA	241	New Energy Metals (US) Inc	100%	Nil
AZ105750541	MICA	242	New Energy Metals (US) Inc	100%	Nil
AZ105750542	MICA	243	New Energy Metals (US) Inc	100%	Nil
AZ105750543	MICA	244	New Energy Metals (US) Inc	100%	Nil
AZ105750544	MICA	245	New Energy Metals (US) Inc	100%	Nil
AZ105750545	MICA	246	New Energy Metals (US) Inc	100%	Nil
AZ105750546	MICA	247	New Energy Metals (US) Inc	100%	Nil
AZ105750547	MICA	248	New Energy Metals (US) Inc	100%	Nil
AZ105750548	MICA	249	New Energy Metals (US) Inc	100%	Nil
AZ105750549	MICA	250	New Energy Metals (US) Inc	100%	Nil
AZ105750550	MICA	251	New Energy Metals (US) Inc	100%	Nil
AZ105750551	MICA	252	New Energy Metals (US) Inc	100%	Nil
AZ105750552	MICA	253	New Energy Metals (US) Inc	100%	Nil
AZ105750553	MICA	254	New Energy Metals (US) Inc	100%	Nil
AZ105750554	MICA	255	New Energy Metals (US) Inc	100%	Nil
AZ105750555	MICA	256	New Energy Metals (US) Inc	100%	Nil

AZ105750556	MICA	257	New Energy Metals (US) Inc	100%	Nil
AZ105750557	MICA	258	New Energy Metals (US) Inc	100%	Nil
AZ105750558	MICA	259	New Energy Metals (US) Inc	100%	Nil
AZ105750559	MICA	260	New Energy Metals (US) Inc	100%	Nil
AZ105750560	MICA	261	New Energy Metals (US) Inc	100%	Nil
AZ105750561	MICA	262	New Energy Metals (US) Inc	100%	Nil
AZ105750562	MICA	263	New Energy Metals (US) Inc	100%	Nil
AZ105750563	MICA	264	New Energy Metals (US) Inc	100%	Nil
AZ105750564	MICA	265	New Energy Metals (US) Inc	100%	Nil
AZ105750565	MICA	266	New Energy Metals (US) Inc	100%	Nil
AZ105750566	MICA	267	New Energy Metals (US) Inc	100%	Nil
AZ105750567	MICA	268	New Energy Metals (US) Inc	100%	Nil
AZ105750568	MICA	269	New Energy Metals (US) Inc	100%	Nil
AZ105750569	MICA	270	New Energy Metals (US) Inc	100%	Nil
AZ105750570	MICA	271	New Energy Metals (US) Inc	100%	Nil
AZ105750571	MICA	272	New Energy Metals (US) Inc	100%	Nil
AZ105750572	MICA	273	New Energy Metals (US) Inc	100%	Nil
AZ105750573	MICA	274	New Energy Metals (US) Inc	100%	Nil
AZ105750574	MICA	275	New Energy Metals (US) Inc	100%	Nil
AZ105750575	MICA	276	New Energy Metals (US) Inc	100%	Nil
AZ105750576	MICA	277	New Energy Metals (US) Inc	100%	Nil
AZ105750577	MICA	278	New Energy Metals (US) Inc	100%	Nil
AZ105750578	MICA	279	New Energy Metals (US) Inc	100%	Nil
AZ105750579	MICA	280	New Energy Metals (US) Inc	100%	Nil
AZ105750580	MICA	281	New Energy Metals (US) Inc	100%	Nil
AZ105750581	MICA	282	New Energy Metals (US) Inc	100%	Nil
AZ105750582	MICA	283	New Energy Metals (US) Inc	100%	Nil
AZ105750583	MICA	284	New Energy Metals (US) Inc	100%	Nil
AZ105750584	MICA	285	New Energy Metals (US) Inc	100%	Nil
AZ105750585	MICA	286	New Energy Metals (US) Inc	100%	Nil
AZ105750586	MICA	287	New Energy Metals (US) Inc	100%	Nil
AZ105750587	MICA	288	New Energy Metals (US) Inc	100%	Nil
AZ105750588	MICA	289	New Energy Metals (US) Inc	100%	Nil
AZ105750589	MICA	290	New Energy Metals (US) Inc	100%	Nil
AZ105750590	MICA	291	New Energy Metals (US) Inc	100%	Nil
AZ105750591	MICA	292	New Energy Metals (US) Inc	100%	Nil
AZ105750592	MICA	293	New Energy Metals (US) Inc	100%	Nil
AZ105750593	MICA	294	New Energy Metals (US) Inc	100%	Nil
AZ105750594	MICA	295	New Energy Metals (US) Inc	100%	Nil
AZ105750595	MICA	296	New Energy Metals (US) Inc	100%	Nil
AZ105750596	MICA	297	New Energy Metals (US) Inc	100%	Nil
AZ105750597	MICA	298	New Energy Metals (US) Inc	100%	Nil
AZ105750598	MICA	299	New Energy Metals (US) Inc	100%	Nil
AZ105750599	MICA	300	New Energy Metals (US) Inc	100%	Nil

AZ105750600	MICA	301	New Energy Metals (US) Inc	100%	Nil
AZ105750601	MICA	302	New Energy Metals (US) Inc	100%	Nil
AZ105750602	MICA	303	New Energy Metals (US) Inc	100%	Nil
AZ105750603	MICA	304	New Energy Metals (US) Inc	100%	Nil
AZ105750604	MICA	305	New Energy Metals (US) Inc	100%	Nil
AZ105750605	MICA	306	New Energy Metals (US) Inc	100%	Nil
AZ105750606	MICA	307	New Energy Metals (US) Inc	100%	Nil
AZ105750607	MICA	308	New Energy Metals (US) Inc	100%	Nil
AZ105750608	MICA	309	New Energy Metals (US) Inc	100%	Nil
AZ105750609	MICA	310	New Energy Metals (US) Inc	100%	Nil
AZ105750610	MICA	311	New Energy Metals (US) Inc	100%	Nil
AZ105750611	MICA	312	New Energy Metals (US) Inc	100%	Nil
AZ105750612	MICA	313	New Energy Metals (US) Inc	100%	Nil
AZ105750613	MICA	314	New Energy Metals (US) Inc	100%	Nil
AZ105750614	MICA	315	New Energy Metals (US) Inc	100%	Nil
AZ105750615	MICA	316	New Energy Metals (US) Inc	100%	Nil
AZ105750616	MICA	317	New Energy Metals (US) Inc	100%	Nil
AZ105750617	MICA	318	New Energy Metals (US) Inc	100%	Nil
AZ105750618	MICA	319	New Energy Metals (US) Inc	100%	Nil
AZ105750619	MICA	320	New Energy Metals (US) Inc	100%	Nil
AZ105750620	MICA	321	New Energy Metals (US) Inc	100%	Nil
AZ105750621	MICA	322	New Energy Metals (US) Inc	100%	Nil
AZ105750622	MICA	323	New Energy Metals (US) Inc	100%	Nil
AZ105750623	MICA	324	New Energy Metals (US) Inc	100%	Nil
AZ105750624	MICA	325	New Energy Metals (US) Inc	100%	Nil
AZ105750625	MICA	326	New Energy Metals (US) Inc	100%	Nil
AZ105750626	MICA	327	New Energy Metals (US) Inc	100%	Nil
AZ105750627	MICA	328	New Energy Metals (US) Inc	100%	Nil
AZ105750628	MICA	329	New Energy Metals (US) Inc	100%	Nil
AZ105750629	MICA	330	New Energy Metals (US) Inc	100%	Nil
AZ105750630	MICA	331	New Energy Metals (US) Inc	100%	Nil
AZ105750631	MICA	332	New Energy Metals (US) Inc	100%	Nil
AZ105750632	MICA	333	New Energy Metals (US) Inc	100%	Nil
AZ105750633	MICA	334	New Energy Metals (US) Inc	100%	Nil
AZ105750634	MICA	335	New Energy Metals (US) Inc	100%	Nil
AZ105750635	MICA	336	New Energy Metals (US) Inc	100%	Nil
AZ105750636	MICA	337	New Energy Metals (US) Inc	100%	Nil
AZ105750637	MICA	338	New Energy Metals (US) Inc	100%	Nil
AZ105750638	MICA	339	New Energy Metals (US) Inc	100%	Nil
AZ105750639	MICA	340	New Energy Metals (US) Inc	100%	Nil
AZ105750640	MICA	341	New Energy Metals (US) Inc	100%	Nil
AZ105750641	MICA	342	New Energy Metals (US) Inc	100%	Nil
AZ105750642	MICA	343	New Energy Metals (US) Inc	100%	Nil
AZ105750643	MICA	344	New Energy Metals (US) Inc	100%	Nil

AZ105750644	MICA	345	New Energy Metals (US) Inc	100%	Nil
AZ105750645	MICA	346	New Energy Metals (US) Inc	100%	Nil
AZ105750646	MICA	347	New Energy Metals (US) Inc	100%	Nil
AZ105830125	SPD (AZ)	71	New Energy Metals (US) Inc	100%	Nil
AZ105830126	SPD (AZ)	72	New Energy Metals (US) Inc	100%	Nil
AZ105830106	SPD (AZ)	52	New Energy Metals (US) Inc	100%	Nil
AZ105830107	SPD (AZ)	53	New Energy Metals (US) Inc	100%	Nil
AZ105830123	SPD (AZ)	69	New Energy Metals (US) Inc	100%	Nil
AZ105830124	SPD (AZ)	70	New Energy Metals (US) Inc	100%	Nil
AZ105830104	SPD (AZ)	50	New Energy Metals (US) Inc	100%	Nil
AZ105830105	SPD (AZ)	51	New Energy Metals (US) Inc	100%	Nil
AZ105830121	SPD (AZ)	67	New Energy Metals (US) Inc	100%	Nil
AZ105830122	SPD (AZ)	68	New Energy Metals (US) Inc	100%	Nil
AZ105830102	SPD (AZ)	48	New Energy Metals (US) Inc	100%	Nil
AZ105830103	SPD (AZ)	49	New Energy Metals (US) Inc	100%	Nil
AZ105830119	SPD (AZ)	65	New Energy Metals (US) Inc	100%	Nil
AZ105830120	SPD (AZ)	66	New Energy Metals (US) Inc	100%	Nil
AZ105830116	SPD (AZ)	62	New Energy Metals (US) Inc	100%	Nil
AZ105830117	SPD (AZ)	63	New Energy Metals (US) Inc	100%	Nil
AZ105830118	SPD (AZ)	64	New Energy Metals (US) Inc	100%	Nil
AZ105830114	SPD (AZ)	60	New Energy Metals (US) Inc	100%	Nil
AZ105830115	SPD (AZ)	61	New Energy Metals (US) Inc	100%	Nil
AZ105830110	SPD (AZ)	56	New Energy Metals (US) Inc	100%	Nil
AZ105830111	SPD (AZ)	57	New Energy Metals (US) Inc	100%	Nil
AZ105830112	SPD (AZ)	58	New Energy Metals (US) Inc	100%	Nil
AZ105830108	SPD (AZ)	54	New Energy Metals (US) Inc	100%	Nil
AZ105830109	SPD (AZ)	55	New Energy Metals (US) Inc	100%	Nil
AZ105830071	SPD (AZ)	17	New Energy Metals (US) Inc	100%	Nil
AZ105830070	SPD (AZ)	16	New Energy Metals (US) Inc	100%	Nil
AZ105830069	SPD (AZ)	15	New Energy Metals (US) Inc	100%	Nil
AZ105830068	SPD (AZ)	14	New Energy Metals (US) Inc	100%	Nil
AZ105830066	SPD (AZ)	12	New Energy Metals (US) Inc	100%	Nil
AZ105830067	SPD (AZ)	13	New Energy Metals (US) Inc	100%	Nil
AZ105830064	SPD (AZ)	10	New Energy Metals (US) Inc	100%	Nil
AZ105830065	SPD (AZ)	11	New Energy Metals (US) Inc	100%	Nil
AZ105830072	SPD (AZ)	18	New Energy Metals (US) Inc	100%	Nil
AZ105830074	SPD (AZ)	20	New Energy Metals (US) Inc	100%	Nil
AZ105830081	SPD (AZ)	27	New Energy Metals (US) Inc	100%	Nil
AZ105830082	SPD (AZ)	28	New Energy Metals (US) Inc	100%	Nil
AZ105830093	SPD (AZ)	39	New Energy Metals (US) Inc	100%	Nil
AZ105830094	SPD (AZ)	40	New Energy Metals (US) Inc	100%	Nil
AZ105830101	SPD (AZ)	47	New Energy Metals (US) Inc	100%	Nil
AZ105830062	SPD (AZ)	8	New Energy Metals (US) Inc	100%	Nil
AZ105830063	SPD (AZ)	9	New Energy Metals (US) Inc	100%	Nil

AZ105830073	SPD (AZ)	19	New Energy Metals (US) Inc	100%	Nil
AZ105830079	SPD (AZ)	25	New Energy Metals (US) Inc	100%	Nil
AZ105830080	SPD (AZ)	26	New Energy Metals (US) Inc	100%	Nil
AZ105830091	SPD (AZ)	37	New Energy Metals (US) Inc	100%	Nil
AZ105830092	SPD (AZ)	38	New Energy Metals (US) Inc	100%	Nil
AZ105830060	SPD (AZ)	6	New Energy Metals (US) Inc	100%	Nil
AZ105830061	SPD (AZ)	7	New Energy Metals (US) Inc	100%	Nil
AZ105830077	SPD (AZ)	23	New Energy Metals (US) Inc	100%	Nil
AZ105830078	SPD (AZ)	24	New Energy Metals (US) Inc	100%	Nil
AZ105830089	SPD (AZ)	35	New Energy Metals (US) Inc	100%	Nil
AZ105830090	SPD (AZ)	36	New Energy Metals (US) Inc	100%	Nil
AZ105830058	SPD (AZ)	4	New Energy Metals (US) Inc	100%	Nil
AZ105830059	SPD (AZ)	5	New Energy Metals (US) Inc	100%	Nil
AZ105830076	SPD (AZ)	22	New Energy Metals (US) Inc	100%	Nil
AZ105830087	SPD (AZ)	33	New Energy Metals (US) Inc	100%	Nil
AZ105830088	SPD (AZ)	34	New Energy Metals (US) Inc	100%	Nil
AZ105830099	SPD (AZ)	45	New Energy Metals (US) Inc	100%	Nil
AZ105830100	SPD (AZ)	46	New Energy Metals (US) Inc	100%	Nil
AZ105830056	SPD (AZ)	2	New Energy Metals (US) Inc	100%	Nil
AZ105830057	SPD (AZ)	3	New Energy Metals (US) Inc	100%	Nil
AZ105830075	SPD (AZ)	21	New Energy Metals (US) Inc	100%	Nil
AZ105830085	SPD (AZ)	31	New Energy Metals (US) Inc	100%	Nil
AZ105830086	SPD (AZ)	32	New Energy Metals (US) Inc	100%	Nil
AZ105830097	SPD (AZ)	43	New Energy Metals (US) Inc	100%	Nil
AZ105830098	SPD (AZ)	44	New Energy Metals (US) Inc	100%	Nil
AZ105830055	SPD (AZ)	1	New Energy Metals (US) Inc	100%	Nil
AZ105830083	SPD (AZ)	29	New Energy Metals (US) Inc	100%	Nil
AZ105830084	SPD (AZ)	30	New Energy Metals (US) Inc	100%	Nil
AZ105830095	SPD (AZ)	41	New Energy Metals (US) Inc	100%	Nil
AZ105830096	SPD (AZ)	42	New Energy Metals (US) Inc	100%	Nil
AZ105830145	SPD (AZ)	91	New Energy Metals (US) Inc	100%	Nil
AZ105830146	SPD (AZ)	92	New Energy Metals (US) Inc	100%	Nil
AZ105830143	SPD (AZ)	89	New Energy Metals (US) Inc	100%	Nil
AZ105830144	SPD (AZ)	90	New Energy Metals (US) Inc	100%	Nil
AZ105830141	SPD (AZ)	87	New Energy Metals (US) Inc	100%	Nil
AZ105830142	SPD (AZ)	88	New Energy Metals (US) Inc	100%	Nil
AZ105830161	SPD (AZ)	107	New Energy Metals (US) Inc	100%	Nil
AZ105830139	SPD (AZ)	85	New Energy Metals (US) Inc	100%	Nil
AZ105830140	SPD (AZ)	86	New Energy Metals (US) Inc	100%	Nil
AZ105830160	SPD (AZ)	106	New Energy Metals (US) Inc	100%	Nil
AZ105830137	SPD (AZ)	83	New Energy Metals (US) Inc	100%	Nil
AZ105830138	SPD (AZ)	84	New Energy Metals (US) Inc	100%	Nil
AZ105830159	SPD (AZ)	105	New Energy Metals (US) Inc	100%	Nil
AZ105830135	SPD (AZ)	81	New Energy Metals (US) Inc	100%	Nil

AZ105830136	SPD (AZ)	82	New Energy Metals (US) Inc	100%	Nil
AZ105830157	SPD (AZ)	103	New Energy Metals (US) Inc	100%	Nil
AZ105830158	SPD (AZ)	104	New Energy Metals (US) Inc	100%	Nil
AZ105830133	SPD (AZ)	79	New Energy Metals (US) Inc	100%	Nil
AZ105830134	SPD (AZ)	80	New Energy Metals (US) Inc	100%	Nil
AZ105830155	SPD (AZ)	101	New Energy Metals (US) Inc	100%	Nil
AZ105830156	SPD (AZ)	102	New Energy Metals (US) Inc	100%	Nil
AZ105830164	SPD (AZ)	110	New Energy Metals (US) Inc	100%	Nil
AZ105830131	SPD (AZ)	77	New Energy Metals (US) Inc	100%	Nil
AZ105830132	SPD (AZ)	78	New Energy Metals (US) Inc	100%	Nil
AZ105830153	SPD (AZ)	99	New Energy Metals (US) Inc	100%	Nil
AZ105830154	SPD (AZ)	100	New Energy Metals (US) Inc	100%	Nil
AZ105830163	SPD (AZ)	109	New Energy Metals (US) Inc	100%	Nil
AZ105830129	SPD (AZ)	75	New Energy Metals (US) Inc	100%	Nil
AZ105830130	SPD (AZ)	76	New Energy Metals (US) Inc	100%	Nil
AZ105830151	SPD (AZ)	97	New Energy Metals (US) Inc	100%	Nil
AZ105830152	SPD (AZ)	98	New Energy Metals (US) Inc	100%	Nil
AZ105830162	SPD (AZ)	108	New Energy Metals (US) Inc	100%	Nil
AZ105830127	SPD (AZ)	73	New Energy Metals (US) Inc	100%	Nil
AZ105830128	SPD (AZ)	74	New Energy Metals (US) Inc	100%	Nil
AZ105830149	SPD (AZ)	95	New Energy Metals (US) Inc	100%	Nil
AZ105830150	SPD (AZ)	96	New Energy Metals (US) Inc	100%	Nil
AZ105830147	SPD (AZ)	93	New Energy Metals (US) Inc	100%	Nil
AZ105830148	SPD (AZ)	94	New Energy Metals (US) Inc	100%	Nil
AZ105830113	SPD (AZ)	59	New Energy Metals (US) Inc	100%	Nil
pending	SPOD (AZ)	124	New Energy Metals (US) Inc	100%	Nil
pending	SPOD (AZ)	126	New Energy Metals (US) Inc	100%	Nil
pending	SPOD (AZ)	128	New Energy Metals (US) Inc	100%	Nil
pending	SPOD (AZ)	127	New Energy Metals (US) Inc	100%	Nil
pending	SPOD (AZ)	125	New Energy Metals (US) Inc	100%	Nil
pending	SPOD (AZ)	123	New Energy Metals (US) Inc	100%	Nil
pending	SPOD (AZ)	119	New Energy Metals (US) Inc	100%	Nil
pending	SPOD (AZ)	121	New Energy Metals (US) Inc	100%	Nil
pending	SPOD (AZ)	118	New Energy Metals (US) Inc	100%	Nil
pending	SPOD (AZ)	117	New Energy Metals (US) Inc	100%	Nil
pending	SPOD (AZ)	120	New Energy Metals (US) Inc	100%	Nil
pending	SPOD (AZ)	122	New Energy Metals (US) Inc	100%	Nil
pending	SPOD (AZ)	116	New Energy Metals (US) Inc	100%	Nil
pending	SPOD (AZ)	115	New Energy Metals (US) Inc	100%	Nil
pending	SPOD (AZ)	112	New Energy Metals (US) Inc	100%	Nil
pending	SPOD (AZ)	113	New Energy Metals (US) Inc	100%	Nil
pending	SPOD (AZ)	114	New Energy Metals (US) Inc	100%	Nil
pending	SPOD (AZ)	111	New Energy Metals (US) Inc	100%	Nil
pending	SPOD (AZ)	130	New Energy Metals (US) Inc	100%	Nil

pending	SPOD (AZ)	131	New Energy Metals (US) Inc	100%	Nil
pending	SPOD (AZ)	129	New Energy Metals (US) Inc	100%	Nil
MT105780589	TSD 1	1	New Energy Metals (US) Inc	100%	Nil
MT105780590	TSD 2	2	New Energy Metals (US) Inc	100%	Nil
MT105780591	TSD 3	3	New Energy Metals (US) Inc	100%	Nil
MT105780592	TSD 4	4	New Energy Metals (US) Inc	100%	Nil
MT105780593	TSD 5	5	New Energy Metals (US) Inc	100%	Nil
MT105780594	TSD 6	6	New Energy Metals (US) Inc	100%	Nil
MT105780595	TSD 7	7	New Energy Metals (US) Inc	100%	Nil
MT105780596	TSD 9	9	New Energy Metals (US) Inc	100%	Nil
MT105780597	TSD 41	41	New Energy Metals (US) Inc	100%	Nil
MT105780598	TSD 42	42	New Energy Metals (US) Inc	100%	Nil
MT105780599	TSD 43	43	New Energy Metals (US) Inc	100%	Nil
MT105780600	TSD 44	44	New Energy Metals (US) Inc	100%	Nil
MT105780601	TSD 45	45	New Energy Metals (US) Inc	100%	Nil
MT105780602	TSD 46	46	New Energy Metals (US) Inc	100%	Nil
MT105780603	TSD 47	47	New Energy Metals (US) Inc	100%	Nil
MT105780604	TSD 49	49	New Energy Metals (US) Inc	100%	Nil
MT105780605	TSD 122	122	New Energy Metals (US) Inc	100%	Nil
MT105780606	TSD 123	123	New Energy Metals (US) Inc	100%	Nil
MT105780607	TSD 124	124	New Energy Metals (US) Inc	100%	Nil
MT105780608	TSD 125	125	New Energy Metals (US) Inc	100%	Nil
pending	TSD1001	1001	New Energy Metals (US) Inc	100%	Nil
pending	TSD1002	1002	New Energy Metals (US) Inc	100%	Nil
pending	TSD1003	1003	New Energy Metals (US) Inc	100%	Nil
pending	TSD1004	1004	New Energy Metals (US) Inc	100%	Nil
pending	TSD1005	1005	New Energy Metals (US) Inc	100%	Nil
pending	TSD1006	1006	New Energy Metals (US) Inc	100%	Nil
pending	TSD1007	1007	New Energy Metals (US) Inc	100%	Nil
pending	TSD1008	1008	New Energy Metals (US) Inc	100%	Nil
pending	TSD1009	1009	New Energy Metals (US) Inc	100%	Nil
pending	TSD1010	1010	New Energy Metals (US) Inc	100%	Nil
pending	TSD1011	1011	New Energy Metals (US) Inc	100%	Nil
pending	TSD1012	1012	New Energy Metals (US) Inc	100%	Nil
pending	TSD1013	1013	New Energy Metals (US) Inc	100%	Nil
pending	TSD1014	1014	New Energy Metals (US) Inc	100%	Nil
pending	TSD1015	1015	New Energy Metals (US) Inc	100%	Nil
pending	TSD1016	1016	New Energy Metals (US) Inc	100%	Nil
pending	TSD1017	1017	New Energy Metals (US) Inc	100%	Nil
pending	TSD1018	1018	New Energy Metals (US) Inc	100%	Nil
pending	TSD1019	1019	New Energy Metals (US) Inc	100%	Nil
pending	TSD1020	1020	New Energy Metals (US) Inc	100%	Nil
pending	TSD1021	1021	New Energy Metals (US) Inc	100%	Nil
pending	TSD1022	1022	New Energy Metals (US) Inc	100%	Nil

pending	TSD1023	1023	New Energy Metals (US) Inc	100%	Nil
pending	TSD1024	1024	New Energy Metals (US) Inc	100%	Nil
pending	TSD1025	1025	New Energy Metals (US) Inc	100%	Nil
pending	TSD1026	1026	New Energy Metals (US) Inc	100%	Nil
pending	TSD1027	1027	New Energy Metals (US) Inc	100%	Nil
pending	TSD1028	1028	New Energy Metals (US) Inc	100%	Nil
pending	TSD1029	1029	New Energy Metals (US) Inc	100%	Nil
pending	TSD1030	1030	New Energy Metals (US) Inc	100%	Nil
pending	TSD1031	1031	New Energy Metals (US) Inc	100%	Nil
pending	TSD1032	1032	New Energy Metals (US) Inc	100%	Nil
pending	TSD1033	1033	New Energy Metals (US) Inc	100%	Nil
pending	TSD1034	1034	New Energy Metals (US) Inc	100%	Nil
pending	TSD1035	1035	New Energy Metals (US) Inc	100%	Nil
pending	TSD1036	1036	New Energy Metals (US) Inc	100%	Nil
pending	TSD1037	1037	New Energy Metals (US) Inc	100%	Nil
pending	TSD1038	1038	New Energy Metals (US) Inc	100%	Nil
pending	TSD1039	1039	New Energy Metals (US) Inc	100%	Nil
pending	TSD1040	1040	New Energy Metals (US) Inc	100%	Nil
pending	TSD1041	1041	New Energy Metals (US) Inc	100%	Nil
pending	TSD1042	1042	New Energy Metals (US) Inc	100%	Nil
pending	TSD1043	1043	New Energy Metals (US) Inc	100%	Nil
WY105782693	TW 1	1	New Energy Metals (US) Inc	100%	Nil
WY105782694	TW 2	2	New Energy Metals (US) Inc	100%	Nil
WY105782695	TW 3	3	New Energy Metals (US) Inc	100%	Nil
WY105782696	TW 4	4	New Energy Metals (US) Inc	100%	Nil
WY105782697	TW 5	5	New Energy Metals (US) Inc	100%	Nil
WY105782698	TW 6	6	New Energy Metals (US) Inc	100%	Nil
WY105782699	TW 7	7	New Energy Metals (US) Inc	100%	Nil
WY105782700	TW 8	8	New Energy Metals (US) Inc	100%	Nil
WY105782701	TW 9	9	New Energy Metals (US) Inc	100%	Nil
WY105782702	TW 10	10	New Energy Metals (US) Inc	100%	Nil
WY105782703	TW 11	11	New Energy Metals (US) Inc	100%	Nil
WY105782704	TW 12	12	New Energy Metals (US) Inc	100%	Nil
WY105782705	TW 13	13	New Energy Metals (US) Inc	100%	Nil
WY105782706	TW 14	14	New Energy Metals (US) Inc	100%	Nil
WY105782707	TW 15	15	New Energy Metals (US) Inc	100%	Nil
WY105782708	TW 16	16	New Energy Metals (US) Inc	100%	Nil
WY105782709	TW 17	17	New Energy Metals (US) Inc	100%	Nil
WY105782710	TW 18	18	New Energy Metals (US) Inc	100%	Nil
WY105782711	TW 19	19	New Energy Metals (US) Inc	100%	Nil
WY105782712	TW 20	20	New Energy Metals (US) Inc	100%	Nil
WY105782713	TW 21	21	New Energy Metals (US) Inc	100%	Nil
WY105782714	TW 22	22	New Energy Metals (US) Inc	100%	Nil
WY105782715	TW 23	23	New Energy Metals (US) Inc	100%	Nil

WY105782716	TW 24	24	New Energy Metals (US) Inc	100%	Nil
WY105782717	TW 25	25	New Energy Metals (US) Inc	100%	Nil
WY105782718	TW 26	26	New Energy Metals (US) Inc	100%	Nil
WY105782719	TW 27	27	New Energy Metals (US) Inc	100%	Nil
WY105782720	TW 28	28	New Energy Metals (US) Inc	100%	Nil
WY105782721	TW 29	29	New Energy Metals (US) Inc	100%	Nil
WY105782722	TW 30	30	New Energy Metals (US) Inc	100%	Nil
WY105782723	TW 32	32	New Energy Metals (US) Inc	100%	Nil
WY105782724	TW 53	53	New Energy Metals (US) Inc	100%	Nil
WY105791089	TW 55A	55	New Energy Metals (US) Inc	100%	Nil
WY105791090	TW 57A	57	New Energy Metals (US) Inc	100%	Nil
WY105782725	TW 64	64	New Energy Metals (US) Inc	100%	Nil
WY105782726	TW 65	65	New Energy Metals (US) Inc	100%	Nil
WY105782727	TW 66	66	New Energy Metals (US) Inc	100%	Nil
WY105782728	TW 67	67	New Energy Metals (US) Inc	100%	Nil
WY105782729	TW 68	68	New Energy Metals (US) Inc	100%	Nil
WY105782730	TW 69	69	New Energy Metals (US) Inc	100%	Nil
WY105782731	TW 71	71	New Energy Metals (US) Inc	100%	Nil
WY105782732	TW 102	102	New Energy Metals (US) Inc	100%	Nil
WY105782733	TW 103	103	New Energy Metals (US) Inc	100%	Nil
WY105782734	TW 104	104	New Energy Metals (US) Inc	100%	Nil
WY105782735	TW 105	105	New Energy Metals (US) Inc	100%	Nil
WY105782736	TW 106	106	New Energy Metals (US) Inc	100%	Nil
WY105782737	TW 107	107	New Energy Metals (US) Inc	100%	Nil
WY105782738	TW 108	108	New Energy Metals (US) Inc	100%	Nil
WY105782739	TW 109	109	New Energy Metals (US) Inc	100%	Nil
WY105782740	TW 136	136	New Energy Metals (US) Inc	100%	Nil
WY105782741	TW 137	137	New Energy Metals (US) Inc	100%	Nil
pending	TW1001	1001	New Energy Metals (US) Inc	100%	Nil
pending	TW1002	1002	New Energy Metals (US) Inc	100%	Nil
pending	TW1003	1003	New Energy Metals (US) Inc	100%	Nil
pending	TW1004	1004	New Energy Metals (US) Inc	100%	Nil
pending	TW1005	1005	New Energy Metals (US) Inc	100%	Nil
pending	TW1006	1006	New Energy Metals (US) Inc	100%	Nil
pending	TW1007	1007	New Energy Metals (US) Inc	100%	Nil
pending	TW1008	1008	New Energy Metals (US) Inc	100%	Nil
pending	TW1009	1009	New Energy Metals (US) Inc	100%	Nil
MT 105779420	KEY 1	1	New Energy Metals (US) Inc	100%	Nil
MT 105779421	KEY 3	3	New Energy Metals (US) Inc	100%	Nil
MT 105779422	KEY 4	4	New Energy Metals (US) Inc	100%	Nil
MT 105779423	KEY 5	5	New Energy Metals (US) Inc	100%	Nil
MT 105779424	KEY 6	6	New Energy Metals (US) Inc	100%	Nil
MT 105779425	KEY 7	7	New Energy Metals (US) Inc	100%	Nil
MT 105779426	KEY 8	8	New Energy Metals (US) Inc	100%	Nil

MT 105779427	KEY 9	9	New Energy Metals (US) Inc	100%	Nil
MT 105779428	KEY 10	10	New Energy Metals (US) Inc	100%	Nil
MT 105779429	KEY 11	11	New Energy Metals (US) Inc	100%	Nil
MT 105779430	KEY 12	12	New Energy Metals (US) Inc	100%	Nil
MT 105779431	KEY 14	14	New Energy Metals (US) Inc	100%	Nil
MT 105779432	KEY 16	16	New Energy Metals (US) Inc	100%	Nil
MT 105779433	KEY 20	20	New Energy Metals (US) Inc	100%	Nil
MT 105779434	KEY 21	21	New Energy Metals (US) Inc	100%	Nil
MT 105779435	KEY 22	22	New Energy Metals (US) Inc	100%	Nil
MT 105779444	KEY 33	33	New Energy Metals (US) Inc	100%	Nil
MT 105779445	KEY 35	35	New Energy Metals (US) Inc	100%	Nil
MT 105779446	KEY 36	36	New Energy Metals (US) Inc	100%	Nil
MT 105779447	KEY 37	37	New Energy Metals (US) Inc	100%	Nil
MT 105779448	KEY 38	38	New Energy Metals (US) Inc	100%	Nil
MT 105779449	KEY 39	39	New Energy Metals (US) Inc	100%	Nil
MT 105779450	KEY 40	40	New Energy Metals (US) Inc	100%	Nil
MT 105779451	KEY 41	41	New Energy Metals (US) Inc	100%	Nil
MT 105779452	KEY 42	42	New Energy Metals (US) Inc	100%	Nil
MT 105779453	KEY 43	43	New Energy Metals (US) Inc	100%	Nil
MT 105779454	KEY 44	44	New Energy Metals (US) Inc	100%	Nil
MT 105779455	KEY 45	45	New Energy Metals (US) Inc	100%	Nil
MT 105779456	KEY 46	46	New Energy Metals (US) Inc	100%	Nil
MT 105779457	KEY 47	47	New Energy Metals (US) Inc	100%	Nil
MT 105782061	KEY 61	61	New Energy Metals (US) Inc	100%	Nil
MT 105782062	KEY 63	63	New Energy Metals (US) Inc	100%	Nil
MT 105782063	KEY 64	64	New Energy Metals (US) Inc	100%	Nil
MT 105782064	KEY 65	65	New Energy Metals (US) Inc	100%	Nil
MT 105782065	KEY 66	66	New Energy Metals (US) Inc	100%	Nil
MT 105782066	KEY 67	67	New Energy Metals (US) Inc	100%	Nil
MT 105782067	KEY 68	68	New Energy Metals (US) Inc	100%	Nil
MT 105782068	KEY 69	69	New Energy Metals (US) Inc	100%	Nil
MT 105782069	KEY 70	70	New Energy Metals (US) Inc	100%	Nil
MT 105782070	KEY 71	71	New Energy Metals (US) Inc	100%	Nil
MT 105782071	KEY 72	72	New Energy Metals (US) Inc	100%	Nil
MT 105782072	KEY 73	73	New Energy Metals (US) Inc	100%	Nil
MT 105782073	KEY 74	74	New Energy Metals (US) Inc	100%	Nil
MT 105782074	KEY 75	75	New Energy Metals (US) Inc	100%	Nil
MT 105782075	KEY 76	76	New Energy Metals (US) Inc	100%	Nil
MT 105782076	KEY 78	78	New Energy Metals (US) Inc	100%	Nil
MT 105782077	KEY 79	79	New Energy Metals (US) Inc	100%	Nil
MT 105782078	KEY 81	81	New Energy Metals (US) Inc	100%	Nil
MT 105782079	KEY 82	82	New Energy Metals (US) Inc	100%	Nil
MT 105782080	KEY 83	83	New Energy Metals (US) Inc	100%	Nil
MT 105782081	KEY 84	84	New Energy Metals (US) Inc	100%	Nil

MT 105782082	KEY 85	85	New Energy Metals (US) Inc	100%	Nil
MT 105782083	KEY 86	86	New Energy Metals (US) Inc	100%	Nil
MT 105782084	KEY 87	87	New Energy Metals (US) Inc	100%	Nil
MT 105782085	KEY 88	88	New Energy Metals (US) Inc	100%	Nil
MT 105782086	KEY 89	89	New Energy Metals (US) Inc	100%	Nil
MT 105782087	KEY 90	90	New Energy Metals (US) Inc	100%	Nil
MT 105782088	KEY 91	91	New Energy Metals (US) Inc	100%	Nil
MT 105782089	KEY 92	92	New Energy Metals (US) Inc	100%	Nil
MT 105782090	KEY 93	93	New Energy Metals (US) Inc	100%	Nil
MT 105782091	KEY 94	94	New Energy Metals (US) Inc	100%	Nil
MT 105782092	KEY 108	108	New Energy Metals (US) Inc	100%	Nil
MT 105779462	KEY 110	110	New Energy Metals (US) Inc	100%	Nil
MT 105779463	KEY 111	111	New Energy Metals (US) Inc	100%	Nil
MT 105779464	KEY 112	112	New Energy Metals (US) Inc	100%	Nil
MT 105779465	KEY 113	113	New Energy Metals (US) Inc	100%	Nil
MT 105779466	KEY 114	114	New Energy Metals (US) Inc	100%	Nil
MT 105779467	KEY 115	115	New Energy Metals (US) Inc	100%	Nil
MT 105779468	KEY 116	116	New Energy Metals (US) Inc	100%	Nil
MT 105779469	KEY 117	117	New Energy Metals (US) Inc	100%	Nil
MT 105779470	KEY 118	118	New Energy Metals (US) Inc	100%	Nil
MT 105779471	KEY 119	119	New Energy Metals (US) Inc	100%	Nil
MT 105779472	KEY 120	120	New Energy Metals (US) Inc	100%	Nil
MT 105779473	KEY 121	121	New Energy Metals (US) Inc	100%	Nil
MT 105779474	KEY 122	122	New Energy Metals (US) Inc	100%	Nil
MT 105779475	KEY 123	123	New Energy Metals (US) Inc	100%	Nil
MT 105779476	KEY 124	124	New Energy Metals (US) Inc	100%	Nil
MT 105779477	KEY 125	125	New Energy Metals (US) Inc	100%	Nil
MT 105779478	KEY 126	126	New Energy Metals (US) Inc	100%	Nil
MT 105779479	KEY 127	127	New Energy Metals (US) Inc	100%	Nil
MT 105779480	KEY 128	128	New Energy Metals (US) Inc	100%	Nil
MT 105779481	KEY 129	129	New Energy Metals (US) Inc	100%	Nil
MT 105779482	KEY 130	130	New Energy Metals (US) Inc	100%	Nil
MT 105779483	KEY 131	131	New Energy Metals (US) Inc	100%	Nil
MT 105779484	KEY 132	132	New Energy Metals (US) Inc	100%	Nil
MT 105779485	KEY 134	134	New Energy Metals (US) Inc	100%	Nil
MT 105779486	KEY 136	136	New Energy Metals (US) Inc	100%	Nil
MT 105779487	KEY 137	137	New Energy Metals (US) Inc	100%	Nil
MT 105779488	KEY 138	138	New Energy Metals (US) Inc	100%	Nil
MT 105779489	KEY 139	139	New Energy Metals (US) Inc	100%	Nil
MT 105779490	KEY 142	142	New Energy Metals (US) Inc	100%	Nil
MT 105779491	KEY 143	143	New Energy Metals (US) Inc	100%	Nil
MT 105782093	KEY 144	144	New Energy Metals (US) Inc	100%	Nil
MT 105779492	KEY 146	146	New Energy Metals (US) Inc	100%	Nil
MT 105779493	KEY 147	147	New Energy Metals (US) Inc	100%	Nil

MT 105779494	KEY 148	148	New Energy Metals (US) Inc	100%	Nil
MT 105779495	KEY 164	164	New Energy Metals (US) Inc	100%	Nil
MT 105782094	KEY 173	173	New Energy Metals (US) Inc	100%	Nil
MT 105782095	KEY 174	174	New Energy Metals (US) Inc	100%	Nil
MT 105782096	KEY 175	175	New Energy Metals (US) Inc	100%	Nil
MT 105782097	KEY 176	176	New Energy Metals (US) Inc	100%	Nil
MT 105782098	KEY 177	177	New Energy Metals (US) Inc	100%	Nil
MT 105782099	KEY 178	178	New Energy Metals (US) Inc	100%	Nil
MT 105782100	KEY 179	179	New Energy Metals (US) Inc	100%	Nil
MT 105782101	KEY 180	180	New Energy Metals (US) Inc	100%	Nil
MT 105782102	KEY 207	207	New Energy Metals (US) Inc	100%	Nil
MT 105782103	KEY 209	209	New Energy Metals (US) Inc	100%	Nil
MT 105782104	KEY 211	211	New Energy Metals (US) Inc	100%	Nil
MT 105782105	KEY 213	213	New Energy Metals (US) Inc	100%	Nil
MT 105782106	KEY 215	215	New Energy Metals (US) Inc	100%	Nil
MT 105782107	KEY 217	217	New Energy Metals (US) Inc	100%	Nil
MT 105782108	KEY 218	218	New Energy Metals (US) Inc	100%	Nil
MT 105782109	KEY 219	219	New Energy Metals (US) Inc	100%	Nil
MT 105782110	KEY 220	220	New Energy Metals (US) Inc	100%	Nil
MT 105782111	KEY 221	221	New Energy Metals (US) Inc	100%	Nil
MT 105782112	KEY 222	222	New Energy Metals (US) Inc	100%	Nil
MT 105782113	KEY 223	223	New Energy Metals (US) Inc	100%	Nil
MT 105782114	KEY 224	224	New Energy Metals (US) Inc	100%	Nil
MT 105782115	KEY 225	225	New Energy Metals (US) Inc	100%	Nil
MT 105782116	KEY 226	226	New Energy Metals (US) Inc	100%	Nil
MT 105782117	KEY 227	227	New Energy Metals (US) Inc	100%	Nil
MT 105782118	KEY 228	228	New Energy Metals (US) Inc	100%	Nil
MT 105782119	KEY 229	229	New Energy Metals (US) Inc	100%	Nil
MT 105782120	KEY 230	230	New Energy Metals (US) Inc	100%	Nil
MT 105782121	KEY 231	231	New Energy Metals (US) Inc	100%	Nil
MT 105782122	KEY 232	232	New Energy Metals (US) Inc	100%	Nil
MT 105782123	KEY 233	233	New Energy Metals (US) Inc	100%	Nil
MT 105782124	KEY 234	234	New Energy Metals (US) Inc	100%	Nil
MT 105782125	KEY 237	237	New Energy Metals (US) Inc	100%	Nil
MT 105782126	KEY 238	238	New Energy Metals (US) Inc	100%	Nil
MT 105782127	KEY 239	239	New Energy Metals (US) Inc	100%	Nil
MT 105782128	KEY 240	240	New Energy Metals (US) Inc	100%	Nil
MT 105782129	KEY 241	241	New Energy Metals (US) Inc	100%	Nil
MT 105782130	KEY 242	242	New Energy Metals (US) Inc	100%	Nil
MT 105782131	KEY 243	243	New Energy Metals (US) Inc	100%	Nil
MT 105782132	KEY 244	244	New Energy Metals (US) Inc	100%	Nil
MT 105782141	KEY 266	266	New Energy Metals (US) Inc	100%	Nil
MT 105782142	KEY 267	267	New Energy Metals (US) Inc	100%	Nil
MT 105782143	KEY 268	268	New Energy Metals (US) Inc	100%	Nil

MT 105782144	KEY 269	269	New Energy Metals (US) Inc	100%	Nil
MT 105782145	KEY 270	270	New Energy Metals (US) Inc	100%	Nil
MT 105782146	KEY 281	281	New Energy Metals (US) Inc	100%	Nil
MT 105782147	KEY 282	282	New Energy Metals (US) Inc	100%	Nil
MT 105782148	KEY 283	283	New Energy Metals (US) Inc	100%	Nil
MT 105782149	KEY 284	284	New Energy Metals (US) Inc	100%	Nil
MT 105782150	KEY 285	285	New Energy Metals (US) Inc	100%	Nil
MT 105782151	KEY 286	286	New Energy Metals (US) Inc	100%	Nil
MT 105782152	KEY 287	287	New Energy Metals (US) Inc	100%	Nil
MT 105782153	KEY 288	288	New Energy Metals (US) Inc	100%	Nil
MT 105782154	KEY 290	290	New Energy Metals (US) Inc	100%	Nil
MT 105782155	KEY 292	292	New Energy Metals (US) Inc	100%	Nil
MT 105782156	KEY 293	293	New Energy Metals (US) Inc	100%	Nil
MT 105782157	KEY 294	294	New Energy Metals (US) Inc	100%	Nil
MT 105782158	KEY 295	295	New Energy Metals (US) Inc	100%	Nil
MT 105782159	KEY 296	296	New Energy Metals (US) Inc	100%	Nil
MT 105782160	KEY 297	297	New Energy Metals (US) Inc	100%	Nil
MT 105782161	KEY 298	298	New Energy Metals (US) Inc	100%	Nil
MT 105782162	KEY 299	299	New Energy Metals (US) Inc	100%	Nil
MT 105782163	KEY 300	300	New Energy Metals (US) Inc	100%	Nil
MT 105782164	KEY 301	301	New Energy Metals (US) Inc	100%	Nil
MT 105782165	KEY 302	302	New Energy Metals (US) Inc	100%	Nil
MT 105782166	KEY 303	303	New Energy Metals (US) Inc	100%	Nil
MT 105782167	KEY 304	304	New Energy Metals (US) Inc	100%	Nil
MT 105782168	KEY 305	305	New Energy Metals (US) Inc	100%	Nil
MT 105782169	KEY 306	306	New Energy Metals (US) Inc	100%	Nil
MT 105782170	KEY 307	307	New Energy Metals (US) Inc	100%	Nil
MT 105782171	KEY 308	308	New Energy Metals (US) Inc	100%	Nil
MT 105782172	KEY 309	309	New Energy Metals (US) Inc	100%	Nil
MT 105782173	KEY 310	310	New Energy Metals (US) Inc	100%	Nil
MT 105782174	KEY 311	311	New Energy Metals (US) Inc	100%	Nil
MT 105782175	KEY 312	312	New Energy Metals (US) Inc	100%	Nil
MT 105782176	KEY 313	313	New Energy Metals (US) Inc	100%	Nil
MT 105782177	KEY 314	314	New Energy Metals (US) Inc	100%	Nil
MT 105782178	KEY 315	315	New Energy Metals (US) Inc	100%	Nil
MT 105782179	KEY 316	316	New Energy Metals (US) Inc	100%	Nil
MT 105782181	KEY 318	318	New Energy Metals (US) Inc	100%	Nil
MT 105782182	KEY 319	319	New Energy Metals (US) Inc	100%	Nil
MT 105782183	KEY 320	320	New Energy Metals (US) Inc	100%	Nil
MT 105782184	KEY 321	321	New Energy Metals (US) Inc	100%	Nil
MT 105782185	KEY 322	322	New Energy Metals (US) Inc	100%	Nil
MT 105782186	KEY 323	323	New Energy Metals (US) Inc	100%	Nil
MT 105782187	KEY 324	324	New Energy Metals (US) Inc	100%	Nil
MT 105782188	KEY 325	325	New Energy Metals (US) Inc	100%	Nil

MT 105782189	KEY 326	326	New Energy Metals (US) Inc	100%	Nil
MT 105782190	KEY 327	327	New Energy Metals (US) Inc	100%	Nil
MT 105782191	KEY 328	328	New Energy Metals (US) Inc	100%	Nil
MT 105782192	KEY 329	329	New Energy Metals (US) Inc	100%	Nil
MT 105782193	KEY 331	331	New Energy Metals (US) Inc	100%	Nil
MT 105782194	KEY 333	333	New Energy Metals (US) Inc	100%	Nil
MT 105782195	KEY 335	335	New Energy Metals (US) Inc	100%	Nil
MT 105782196	KEY 337	337	New Energy Metals (US) Inc	100%	Nil
MT 105782197	KEY 339	339	New Energy Metals (US) Inc	100%	Nil
MT 105782198	KEY 344	344	New Energy Metals (US) Inc	100%	Nil
MT 105782199	KEY 345	345	New Energy Metals (US) Inc	100%	Nil
MT 105782200	KEY 346	346	New Energy Metals (US) Inc	100%	Nil
MT 105782201	KEY 347	347	New Energy Metals (US) Inc	100%	Nil
MT 105782202	KEY 348	348	New Energy Metals (US) Inc	100%	Nil
MT 105782203	KEY 349	349	New Energy Metals (US) Inc	100%	Nil
MT 105782204	KEY 350	350	New Energy Metals (US) Inc	100%	Nil
MT 105782205	KEY 351	351	New Energy Metals (US) Inc	100%	Nil
MT 105782206	KEY 352	352	New Energy Metals (US) Inc	100%	Nil
MT 105782207	KEY 353	353	New Energy Metals (US) Inc	100%	Nil
MT 105782208	KEY 354	354	New Energy Metals (US) Inc	100%	Nil
MT 105782209	KEY 355	355	New Energy Metals (US) Inc	100%	Nil
MT 105782210	KEY 356	356	New Energy Metals (US) Inc	100%	Nil
MT 105782211	KEY 358	358	New Energy Metals (US) Inc	100%	Nil
MT 105782212	KEY 360	360	New Energy Metals (US) Inc	100%	Nil
MT 105782213	KEY 362	362	New Energy Metals (US) Inc	100%	Nil
MT 105782214	KEY 363	363	New Energy Metals (US) Inc	100%	Nil
MT 105782215	KEY 364	364	New Energy Metals (US) Inc	100%	Nil
MT 105782216	KEY 365	365	New Energy Metals (US) Inc	100%	Nil
MT 105782217	KEY 367	367	New Energy Metals (US) Inc	100%	Nil
MT 105782218	KEY 368	368	New Energy Metals (US) Inc	100%	Nil
MT 105782219	KEY 369	369	New Energy Metals (US) Inc	100%	Nil
MT 105782220	KEY 370	370	New Energy Metals (US) Inc	100%	Nil
MT 105782221	KEY 373	373	New Energy Metals (US) Inc	100%	Nil
MT 105782222	KEY 374	374	New Energy Metals (US) Inc	100%	Nil
MT 105782223	KEY 375	375	New Energy Metals (US) Inc	100%	Nil
MT 105782224	KEY 376	376	New Energy Metals (US) Inc	100%	Nil
MT 105782225	KEY 377	377	New Energy Metals (US) Inc	100%	Nil
MT 105782226	KEY 378	378	New Energy Metals (US) Inc	100%	Nil
MT 105782227	KEY 379	379	New Energy Metals (US) Inc	100%	Nil
MT 105782228	KEY 380	380	New Energy Metals (US) Inc	100%	Nil
MT 105782229	KEY 381	381	New Energy Metals (US) Inc	100%	Nil
MT 105782230	KEY 382	382	New Energy Metals (US) Inc	100%	Nil
MT 105782231	KEY 383	383	New Energy Metals (US) Inc	100%	Nil
MT 105782232	KEY 384	384	New Energy Metals (US) Inc	100%	Nil

MT 105782233	KEY 399	399	New Energy Metals (US) Inc	100%	Nil
MT 105782234	KEY 400	400	New Energy Metals (US) Inc	100%	Nil
MT 105782235	KEY 401	401	New Energy Metals (US) Inc	100%	Nil
MT 105782236	KEY 402	402	New Energy Metals (US) Inc	100%	Nil
MT 105782237	KEY 403	403	New Energy Metals (US) Inc	100%	Nil
MT 105782238	KEY 404	404	New Energy Metals (US) Inc	100%	Nil
MT 105782239	KEY 405	405	New Energy Metals (US) Inc	100%	Nil
MT 105782240	KEY 406	406	New Energy Metals (US) Inc	100%	Nil
MT 105782241	KEY 407	407	New Energy Metals (US) Inc	100%	Nil
MT 105782242	KEY 409	409	New Energy Metals (US) Inc	100%	Nil
MT105830629	SPOD1	1	New Energy Metals (US) Inc	100%	Nil
MT105830630	SPOD2	2	New Energy Metals (US) Inc	100%	Nil
MT105830631	SPOD3	3	New Energy Metals (US) Inc	100%	Nil
MT105830632	SPOD4	4	New Energy Metals (US) Inc	100%	Nil
MT105830633	SPOD5	5	New Energy Metals (US) Inc	100%	Nil
MT105830634	SPOD6	6	New Energy Metals (US) Inc	100%	Nil
MT105830635	SPOD7	7	New Energy Metals (US) Inc	100%	Nil
MT105830636	SPOD8	8	New Energy Metals (US) Inc	100%	Nil
MT105830637	SPOD9	9	New Energy Metals (US) Inc	100%	Nil
MT105830638	SPOD10	10	New Energy Metals (US) Inc	100%	Nil
MT105830639	SPOD11	11	New Energy Metals (US) Inc	100%	Nil
MT105830640	SPOD12	12	New Energy Metals (US) Inc	100%	Nil
MT105830641	SPOD13	13	New Energy Metals (US) Inc	100%	Nil
MT105830642	SPOD14	14	New Energy Metals (US) Inc	100%	Nil
MT105830643	SPOD15	15	New Energy Metals (US) Inc	100%	Nil
MT105830644	SPOD16	16	New Energy Metals (US) Inc	100%	Nil
MT105830645	SPOD17	17	New Energy Metals (US) Inc	100%	Nil
MT105830646	SPOD18	18	New Energy Metals (US) Inc	100%	Nil
MT105830647	SPOD19	19	New Energy Metals (US) Inc	100%	Nil
MT105830648	SPOD20	20	New Energy Metals (US) Inc	100%	Nil
MT105830649	SPOD21	21	New Energy Metals (US) Inc	100%	Nil
MT105830650	SPOD22	22	New Energy Metals (US) Inc	100%	Nil
MT105830651	SPOD23	23	New Energy Metals (US) Inc	100%	Nil
MT105830652	SPOD24	24	New Energy Metals (US) Inc	100%	Nil
MT105830653	SPOD25	25	New Energy Metals (US) Inc	100%	Nil
MT105830654	SPOD26	26	New Energy Metals (US) Inc	100%	Nil
MT105830655	SPOD27	27	New Energy Metals (US) Inc	100%	Nil
MT105830656	SPOD28	28	New Energy Metals (US) Inc	100%	Nil
MT105830657	SPOD29	29	New Energy Metals (US) Inc	100%	Nil
MT105830658	SPOD30	30	New Energy Metals (US) Inc	100%	Nil
MT105830659	SPOD31	31	New Energy Metals (US) Inc	100%	Nil
MT105830660	SPOD32	32	New Energy Metals (US) Inc	100%	Nil
MT105830661	SPOD33	33	New Energy Metals (US) Inc	100%	Nil
MT105830662	SPOD34	34	New Energy Metals (US) Inc	100%	Nil

MT105830663	SPOD35	35	New Energy Metals (US) Inc	100%	Nil
MT105830664	SPOD36	36	New Energy Metals (US) Inc	100%	Nil
MT105830665	SPOD37	37	New Energy Metals (US) Inc	100%	Nil
MT105830666	SPOD38	38	New Energy Metals (US) Inc	100%	Nil
MT105830667	SPOD39	39	New Energy Metals (US) Inc	100%	Nil
MT105830668	SPOD40	40	New Energy Metals (US) Inc	100%	Nil
MT105830669	SPOD41	41	New Energy Metals (US) Inc	100%	Nil
MT105830670	SPOD42	42	New Energy Metals (US) Inc	100%	Nil
MT105830671	SPOD43	43	New Energy Metals (US) Inc	100%	Nil
MT105830672	SPOD44	44	New Energy Metals (US) Inc	100%	Nil
MT105830673	SPOD45	45	New Energy Metals (US) Inc	100%	Nil
MT105830674	SPOD46	46	New Energy Metals (US) Inc	100%	Nil
MT105830675	SPOD47	47	New Energy Metals (US) Inc	100%	Nil
MT105830676	SPOD48	48	New Energy Metals (US) Inc	100%	Nil
MT105830677	SPOD49	49	New Energy Metals (US) Inc	100%	Nil
MT105830678	SPOD50	50	New Energy Metals (US) Inc	100%	Nil
MT105830679	SPOD51	51	New Energy Metals (US) Inc	100%	Nil
MT105830680	SPOD52	52	New Energy Metals (US) Inc	100%	Nil
MT105830681	SPOD53	53	New Energy Metals (US) Inc	100%	Nil
MT105830682	SPOD54	54	New Energy Metals (US) Inc	100%	Nil
MT105830683	SPOD55	55	New Energy Metals (US) Inc	100%	Nil
MT105830684	SPOD56	56	New Energy Metals (US) Inc	100%	Nil
MT105830685	SPOD57	57	New Energy Metals (US) Inc	100%	Nil
MT105830686	SPOD58	58	New Energy Metals (US) Inc	100%	Nil
MT105830687	SPOD59	59	New Energy Metals (US) Inc	100%	Nil
MT105830688	SPOD60	60	New Energy Metals (US) Inc	100%	Nil
MT105830689	SPOD61	61	New Energy Metals (US) Inc	100%	Nil
MT105830690	SPOD62	62	New Energy Metals (US) Inc	100%	Nil
MT105830691	SPOD63	63	New Energy Metals (US) Inc	100%	Nil
MT105830692	SPOD64	64	New Energy Metals (US) Inc	100%	Nil
MT105830693	SPOD65	65	New Energy Metals (US) Inc	100%	Nil
MT105830694	SPOD66	66	New Energy Metals (US) Inc	100%	Nil
MT105830695	SPOD67	67	New Energy Metals (US) Inc	100%	Nil
MT105830696	SPOD68	68	New Energy Metals (US) Inc	100%	Nil
MT105830697	SPOD69	69	New Energy Metals (US) Inc	100%	Nil
MT105830698	SPOD70	70	New Energy Metals (US) Inc	100%	Nil
MT105830699	SPOD71	71	New Energy Metals (US) Inc	100%	Nil
MT105830700	SPOD72	72	New Energy Metals (US) Inc	100%	Nil
MT105830701	SPOD73	73	New Energy Metals (US) Inc	100%	Nil
MT105830702	SPOD74	74	New Energy Metals (US) Inc	100%	Nil
MT105830703	SPOD75	75	New Energy Metals (US) Inc	100%	Nil
MT105830704	SPOD76	76	New Energy Metals (US) Inc	100%	Nil
MT105830705	SPOD77	77	New Energy Metals (US) Inc	100%	Nil
MT105830706	SPOD78	78	New Energy Metals (US) Inc	100%	Nil

MT105830707	SPOD79	79	New Energy Metals (US) Inc	100%	Nil
MT105830708	SPOD80	80	New Energy Metals (US) Inc	100%	Nil
MT105830709	SPOD81	81	New Energy Metals (US) Inc	100%	Nil
MT105830710	SPOD82	82	New Energy Metals (US) Inc	100%	Nil
MT105830711	SPOD83	83	New Energy Metals (US) Inc	100%	Nil
MT105830712	SPOD84	84	New Energy Metals (US) Inc	100%	Nil
MT105830713	SPOD85	85	New Energy Metals (US) Inc	100%	Nil
MT105830714	SPOD86	86	New Energy Metals (US) Inc	100%	Nil
MT105830715	SPOD87	87	New Energy Metals (US) Inc	100%	Nil
MT105830716	SPOD88	88	New Energy Metals (US) Inc	100%	Nil
MT105830717	SPOD89	89	New Energy Metals (US) Inc	100%	Nil
MT105830718	SPOD90	90	New Energy Metals (US) Inc	100%	Nil
MT105830719	SPOD91	91	New Energy Metals (US) Inc	100%	Nil
MT105830720	SPOD92	92	New Energy Metals (US) Inc	100%	Nil
MT105830721	SPOD93	93	New Energy Metals (US) Inc	100%	Nil
MT105830722	SPOD94	94	New Energy Metals (US) Inc	100%	Nil
MT105830723	SPOD95	95	New Energy Metals (US) Inc	100%	Nil
MT105830724	SPOD96	96	New Energy Metals (US) Inc	100%	Nil
MT105830725	SPOD97	97	New Energy Metals (US) Inc	100%	Nil
MT105830726	SPOD98	98	New Energy Metals (US) Inc	100%	Nil
MT105830727	SPOD99	99	New Energy Metals (US) Inc	100%	Nil
MT105830728	SPOD100	100	New Energy Metals (US) Inc	100%	Nil
MT105830729	SPOD101	101	New Energy Metals (US) Inc	100%	Nil
MT105830730	SPOD102	102	New Energy Metals (US) Inc	100%	Nil
MT105830731	SPOD103	103	New Energy Metals (US) Inc	100%	Nil
MT105830732	SPOD104	104	New Energy Metals (US) Inc	100%	Nil
MT105830733	SPOD105	105	New Energy Metals (US) Inc	100%	Nil
MT105830734	SPOD106	106	New Energy Metals (US) Inc	100%	Nil
MT105830735	SPOD107	107	New Energy Metals (US) Inc	100%	Nil
MT105830736	SPOD108	108	New Energy Metals (US) Inc	100%	Nil
MT105830737	SPOD109	109	New Energy Metals (US) Inc	100%	Nil
MT105830738	SPOD110	110	New Energy Metals (US) Inc	100%	Nil
MT105830739	SPOD111	111	New Energy Metals (US) Inc	100%	Nil
MT105830740	SPOD112	112	New Energy Metals (US) Inc	100%	Nil
MT105830741	SPOD113	113	New Energy Metals (US) Inc	100%	Nil
MT105830742	SPOD114	114	New Energy Metals (US) Inc	100%	Nil
MT105830743	SPOD115	115	New Energy Metals (US) Inc	100%	Nil
MT105830744	SPOD116	116	New Energy Metals (US) Inc	100%	Nil
MT105830745	SPOD117	117	New Energy Metals (US) Inc	100%	Nil
MT105830746	SPOD118	118	New Energy Metals (US) Inc	100%	Nil
MT105830747	SPOD119	119	New Energy Metals (US) Inc	100%	Nil
MT105830748	SPOD120	120	New Energy Metals (US) Inc	100%	Nil
MT105830749	SPOD121	121	New Energy Metals (US) Inc	100%	Nil
MT105830750	SPOD122	122	New Energy Metals (US) Inc	100%	Nil

MT105830751	SPOD123	123	New Energy Metals (US) Inc	100%	Nil
MT105830752	SPOD124	124	New Energy Metals (US) Inc	100%	Nil
MT105830753	SPOD125	125	New Energy Metals (US) Inc	100%	Nil
MT105830754	SPOD126	126	New Energy Metals (US) Inc	100%	Nil
MT105830755	SPOD127	127	New Energy Metals (US) Inc	100%	Nil
MT105830756	SPOD128	128	New Energy Metals (US) Inc	100%	Nil
MT105830757	SPOD129	129	New Energy Metals (US) Inc	100%	Nil
MT105830758	SPOD130	130	New Energy Metals (US) Inc	100%	Nil
MT105830759	SPOD131	131	New Energy Metals (US) Inc	100%	Nil
MT105830760	SPOD132	132	New Energy Metals (US) Inc	100%	Nil
MT105830761	SPOD133	133	New Energy Metals (US) Inc	100%	Nil
MT105830762	SPOD134	134	New Energy Metals (US) Inc	100%	Nil
MT105830763	SPOD135	135	New Energy Metals (US) Inc	100%	Nil
MT105830764	SPOD136	136	New Energy Metals (US) Inc	100%	Nil
MT105830765	SPOD137	137	New Energy Metals (US) Inc	100%	Nil
MT105830766	SPOD138	138	New Energy Metals (US) Inc	100%	Nil
MT105830767	SPOD139	139	New Energy Metals (US) Inc	100%	Nil
MT105830768	SPOD140	140	New Energy Metals (US) Inc	100%	Nil
MT105830769	SPOD141	141	New Energy Metals (US) Inc	100%	Nil
MT105830770	SPOD142	142	New Energy Metals (US) Inc	100%	Nil
MT105830771	SPOD143	143	New Energy Metals (US) Inc	100%	Nil
MT105830772	SPOD144	144	New Energy Metals (US) Inc	100%	Nil
MT105830773	SPOD145	145	New Energy Metals (US) Inc	100%	Nil
MT105830774	SPOD146	146	New Energy Metals (US) Inc	100%	Nil
MT105830775	SPOD147	147	New Energy Metals (US) Inc	100%	Nil
MT105830776	SPOD148	148	New Energy Metals (US) Inc	100%	Nil
MT105830777	SPOD149	149	New Energy Metals (US) Inc	100%	Nil
MT105830778	SPOD150	150	New Energy Metals (US) Inc	100%	Nil
MT105830779	SPOD151	151	New Energy Metals (US) Inc	100%	Nil
MT105830780	SPOD152	152	New Energy Metals (US) Inc	100%	Nil
MT105830781	SPOD153	153	New Energy Metals (US) Inc	100%	Nil
MT105830782	SPOD154	154	New Energy Metals (US) Inc	100%	Nil
MT105830783	SPOD155	155	New Energy Metals (US) Inc	100%	Nil
MT105830784	SPOD156	156	New Energy Metals (US) Inc	100%	Nil
MT105830785	SPOD157	157	New Energy Metals (US) Inc	100%	Nil
MT105830786	SPOD158	158	New Energy Metals (US) Inc	100%	Nil
MT105830787	SPOD159	159	New Energy Metals (US) Inc	100%	Nil
MT105830788	SPOD160	160	New Energy Metals (US) Inc	100%	Nil
MT105830789	SPOD161	161	New Energy Metals (US) Inc	100%	Nil
MT105830790	SPOD162	162	New Energy Metals (US) Inc	100%	Nil
MT105830791	SPOD163	163	New Energy Metals (US) Inc	100%	Nil
MT105830792	SPOD164	164	New Energy Metals (US) Inc	100%	Nil
MT105830793	SPOD165	165	New Energy Metals (US) Inc	100%	Nil
MT105830794	SPOD166	166	New Energy Metals (US) Inc	100%	Nil

MT105830795	SPOD167	167	New Energy Metals (US) Inc	100%	Nil
MT105830796	SPOD168	168	New Energy Metals (US) Inc	100%	Nil
MT105830797	SPOD169	169	New Energy Metals (US) Inc	100%	Nil
MT105830798	SPOD170	170	New Energy Metals (US) Inc	100%	Nil
MT105830799	SPOD171	171	New Energy Metals (US) Inc	100%	Nil
MT105830800	SPOD172	172	New Energy Metals (US) Inc	100%	Nil
MT105830801	SPOD173	173	New Energy Metals (US) Inc	100%	Nil
MT105830802	SPOD174	174	New Energy Metals (US) Inc	100%	Nil
MT105830803	SPOD175	175	New Energy Metals (US) Inc	100%	Nil
MT105830804	SPOD176	176	New Energy Metals (US) Inc	100%	Nil

Appendix 5B

Mining exploration entity or oil and gas exploration entity quarterly cash flow report

Name of entity

Patriot Lithium Limited

ABN

83 647 470 415

Quarter ended ("current quarter")

30 June 2023

Consolidated statement of cash flows	Current quarter \$A'000	Year to date (12 months) \$A'000
1. Cash flows from operating activities		
1.1 Receipts from customers	-	-
1.2 Payments for	-	-
(a) exploration & evaluation	(1,977)	(2,416)
(b) development	-	-
(c) production	-	-
(d) staff costs	(181)	(425)
(e) administration and corporate costs	(123)	(634)
1.3 Dividends received (see note 3)	-	-
1.4 Interest received	12	33
1.5 Interest and other costs of finance paid	-	-
1.6 Income taxes paid	-	-
1.7 Government grants and tax incentives	-	-
1.8 Other (GST)	-	-
1.9 Net cash from / (used in) operating activities	(2,269)	(3,443)

2. Cash flows from investing activities		
2.1 Payments to acquire or for:		
(a) entities	-	-
(b) tenements	(87)	(971)
(c) property, plant and equipment	(98)	(246)
(d) exploration & evaluation	-	-
(e) investments	-	-
(f) other non-current assets	-	-

Mining exploration entity or oil and gas exploration entity quarterly cash flow report

Consolidated statement of cash flows		Current quarter \$A'000	Year to date (12 months) \$A'000
2.2	Proceeds from the disposal of:		
	(a) entities	-	-
	(b) tenements	-	-
	(c) property, plant and equipment	-	-
	(d) investments	-	-
	(e) other non-current assets	-	-
2.3	Cash flows from loans to other entities	-	-
2.4	Dividends received (see note 3)	-	-
2.5	Other (provide details if material)	-	-
2.6	Net cash from / (used in) investing activities	(185)	(1,217)

3.	Cash flows from financing activities		
3.1	Proceeds from issues of equity securities (excluding convertible debt securities)	-	10,502
3.2	Proceeds from issue of convertible debt securities	-	-
3.3	Proceeds from exercise of options	-	-
3.4	Transaction costs related to issues of equity securities or convertible debt securities	-	(1,050)
3.5	Proceeds from borrowings	-	-
3.6	Repayment of borrowings	-	-
3.7	Transaction costs related to loans and borrowings	-	-
3.8	Dividends paid	-	-
3.9	Other (provide details if material)	(18)	(37)
3.10	Net cash from / (used in) financing activities	(18)	9,415

4.	Net increase / (decrease) in cash and cash equivalents for the period		
4.1	Cash and cash equivalents at beginning of period	7,577	347
4.2	Net cash from / (used in) operating activities (item 1.9 above)	(2,269)	(3,442)
4.3	Net cash from / (used in) investing activities (item 2.6 above)	(186)	(1,217)
4.4	Net cash from / (used in) financing activities (item 3.10 above)	(18)	9,415

Mining exploration entity or oil and gas exploration entity quarterly cash flow report

Consolidated statement of cash flows		Current quarter \$A'000	Year to date (12 months) \$A'000
4.5	Effect of movement in exchange rates on cash held	-	-
4.6	Cash and cash equivalents at end of period	5,103	5,103

5.	Reconciliation of cash and cash equivalents at the end of the quarter (as shown in the consolidated statement of cash flows) to the related items in the accounts	Current quarter \$A'000	Previous quarter \$A'000
5.1	Bank balances	5,103	7,577
5.2	Call deposits	-	-
5.3	Bank overdrafts	-	-
5.4	Other (provide details)	-	-
5.5	Cash and cash equivalents at end of quarter (should equal item 4.6 above)	5,103	7,577

6.	Payments to related parties of the entity and their associates	Current quarter \$A'000
6.1	Aggregate amount of payments to related parties and their associates included in item 1	123
6.2	Aggregate amount of payments to related parties and their associates included in item 2	-

Note: if any amounts are shown in items 6.1 or 6.2, your quarterly activity report must include a description of, and an explanation for, such payments.

Mining exploration entity or oil and gas exploration entity quarterly cash flow report

7. Financing facilities	Total facility amount at quarter end \$A'000	Amount drawn at quarter end \$A'000
<i>Note: the term "facility" includes all forms of financing arrangements available to the entity. Add notes as necessary for an understanding of the sources of finance available to the entity.</i>		
7.1 Loan facilities	-	-
7.2 Credit standby arrangements	-	-
7.3 Other (please specify)	-	-
7.4 Total financing facilities	-	-
7.5 Unused financing facilities available at quarter end		-
7.6 Include in the box below a description of each facility above, including the lender, interest rate, maturity date and whether it is secured or unsecured. If any additional financing facilities have been entered into or are proposed to be entered into after quarter end, include a note providing details of those facilities as well.		
N/A		

8. Estimated cash available for future operating activities	\$A'000
8.1 Net cash from / (used in) operating activities (item 1.9)	(2,269)
8.2 (Payments for exploration & evaluation classified as investing activities) (item 2.1(d))	-
8.3 Total relevant outgoings (item 8.1 + item 8.2)	(2,269)
8.4 Cash and cash equivalents at quarter end (item 4.6)	5,103
8.5 Unused finance facilities available at quarter end (item 7.5) ¹	-
8.6 Total available funding (item 8.4 + item 8.5)	5,103
8.7 Estimated quarters of funding available (item 8.6 divided by item 8.3)	2.25
<i>Note: if the entity has reported positive relevant outgoings (ie a net cash inflow) in item 8.3, answer item 8.7 as "N/A". Otherwise, a figure for the estimated quarters of funding available must be included in item 8.7.</i>	
8.8 If item 8.7 is less than 2 quarters, please provide answers to the following questions:	
8.8.1 Does the entity expect that it will continue to have the current level of net operating cash flows for the time being and, if not, why not?	
Answer: n/a	
8.8.2 Has the entity taken any steps, or does it propose to take any steps, to raise further cash to fund its operations and, if so, what are those steps and how likely does it believe that they will be successful?	
Answer: n/a	

Mining exploration entity or oil and gas exploration entity quarterly cash flow report

8.8.3 Does the entity expect to be able to continue its operations and to meet its business objectives and, if so, on what basis?

Answer: n/a

Note: where item 8.7 is less than 2 quarters, all of questions 8.8.1, 8.8.2 and 8.8.3 above must be answered.

Compliance statement

- 1 This statement has been prepared in accordance with accounting standards and policies which comply with Listing Rule 19.11A.
- 2 This statement gives a true and fair view of the matters disclosed.

Date:31 July 2023.....

Authorised by: The Board.....
(Name of body or officer authorising release – see note 4)

Notes

1. This quarterly cash flow report and the accompanying activity report provide a basis for informing the market about the entity's activities for the past quarter, how they have been financed and the effect this has had on its cash position. An entity that wishes to disclose additional information over and above the minimum required under the Listing Rules is encouraged to do so.
2. If this quarterly cash flow report has been prepared in accordance with Australian Accounting Standards, the definitions in, and provisions of, *AASB 6: Exploration for and Evaluation of Mineral Resources* and *AASB 107: Statement of Cash Flows* apply to this report. If this quarterly cash flow report has been prepared in accordance with other accounting standards agreed by ASX pursuant to Listing Rule 19.11A, the corresponding equivalent standards apply to this report.
3. Dividends received may be classified either as cash flows from operating activities or cash flows from investing activities, depending on the accounting policy of the entity.
4. If this report has been authorised for release to the market by your board of directors, you can insert here: "By the board". If it has been authorised for release to the market by a committee of your board of directors, you can insert here: "By the [name of board committee – eg Audit and Risk Committee]". If it has been authorised for release to the market by a disclosure committee, you can insert here: "By the Disclosure Committee".
5. If this report has been authorised for release to the market by your board of directors and you wish to hold yourself out as complying with recommendation 4.2 of the ASX Corporate Governance Council's *Corporate Governance Principles and Recommendations*, the board should have received a declaration from its CEO and CFO that, in their opinion, the financial records of the entity have been properly maintained, that this report complies with the appropriate accounting standards and gives a true and fair view of the cash flows of the entity, and that their opinion has been formed on the basis of a sound system of risk management and internal control which is operating effectively.