

Infill Drilling Delivers More High-Grade Lithium at Youanmi

High-grade intervals up to 2.9% Li₂O continue to confirm continuity and thickness of lithium mineralisation

- High-grade intervals up to 2.9% Li₂O continue to confirm continuity and thickness of lithium mineralisation
- Scorpion continues to systematically infill and test the geometry and down dip continuity of the stacked LCT pegmatites over 850m of strike at Youanmi
- Significant high-grade assay results from RC drilling at Youanmi Project include:
 - 9m @ 1.37% Li₂O from 112m
 - 10m @ 1.12% Li₂O from 130m
 - 8m @ 1.29% Li₂O from 24m
 - 6m @ 1.31% Li₂O from 44m
 - 5m @ 1.56% Li₂O from 92m
 - 6m @ 1.21% Li₂O from 13m
 - 5m @ 1.24% Li₂O from 100m
- High-grade lithium mineralisation up to 2.9% Li₂O intersected in stacked LCT pegmatites
- Northern most drill hole intersected 9m @ 1.50% Li₂O at depth – remains open to north and down dip
- Results confirm shallow east dipping LCT pegmatites along 1000m of strike within the central corridor requiring immediate infill drilling
- Assays confirm mineralised pegmatites at depths of up to 175 metres below surface which remain open down dip on all sections
- Additional planned exploration will include geological mapping, soil geochemistry, RC/Diamond drilling of lithium targets and XRD mineral analysis

Scorpion Minerals Limited (ASX:SCN) (**Scorpion, SCN or the Company**) is pleased to report first assay results from the recently completed Reverse Circulation (RC) drilling programme at the Youanmi Lithium Project (**Youanmi**) in Western Australia.

Drilling continues to demonstrate **significant high-grade lithium mineralisation hosted by shallow east dipping LCT pegmatites** along 3km of strike and extending to a minimum of 175m below surface.

The Youanmi Lithium Project comprises E57/978, E57/1049, E57/1056 and E57/1377 (the **Tenements**) and covers an area of 177km², located 450km northeast of Perth in the East Murchison Mineral Field (Figures 10 and 11).

BOARD OF DIRECTORS

Ms Bronwyn Barnes
Non-Executive Chairman

Ms Kate Stoney
*Executive Director -
Finance, Joint Company
Secretary*

Mr Michael Kitney
Non-Executive Director

MANAGEMENT

Mr Michael Fotios
Chief Executive Officer

Mr Michael Langford
Chief Investment Officer

Mr Josh Merriman
Joint Company Secretary

SCORPION MINERALS LIMITED

ABN 40 115 535 030
Level 2, 50 Kings Park Rd
West Perth WA 6005

T: +61 8 6241 1877

F: +61 8 6241 1811

www.scorpionminerals.com.au

Commenting on the continued high-quality results being delivered from Youanmi, Scorpion's CEO Michael Fotios said: "We continue to be delighted by the consistent flow of high-grade lithium intersections from our Youanmi Project. Our recent infill drilling continues to support our aim to establish an initial maiden resource at Youanmi, with further confirmation that mineralisation within the LCT pegmatites hangs together and remains open in all directions.

Scorpion will push ahead with further drilling as we aim to further test and extend this mineralisation along strike and at depth. Youanmi continues to shape as an exciting and rapidly emerging lithium asset in a Tier-1 jurisdiction and we look forward to reporting further drilling results as they come to hand."

Wide intervals of high-grade lithium mineralisation in LCT Pegmatites at Youanmi

The most recent RC drill programme at Youanmi comprised 17 holes (SYRC023 to SYRC039) for 2,202 metres. Assaying of drill samples from the first sample batch submitted (406 samples) confirmed continuity and thickness of lithium mineralisation within multiple stacked shallow east dipping LCT pegmatites to a depth of at least 175 metres below surface. Assays from the second submitted batch (267 samples) will be reported in the coming weeks.

Individual pegmatites are up to 1,000m long and surface exposures suggest widths from 5m to 15m. Drilling has intersected lithium mineralisation up to 10 metres in thickness (Tables 1 and 2). Individual 1m assays up to 2.9% Li₂O (SYRC032 45-46m) were returned.

Significant intercepts from this initial batch of assays include:

- **9m @ 1.37% Li₂O, 125ppm Ta₂O₅ and 53ppm Nb₂O₅ from 112m in SYRC028**
- **10m @ 1.12% Li₂O, 120ppm Ta₂O₅ and 82ppm Nb₂O₅ from 130m in SYRC033**
- **8m @ 1.29% Li₂O, 85ppm Ta₂O₅ and 50ppm Nb₂O₅ from 24m in SYRC023**
- **6m @ 1.31% Li₂O, 104ppm Ta₂O₅ and 60ppm Nb₂O₅ from 44m in SYRC032**
- **5m @ 1.56% Li₂O, 138ppm Ta₂O₅ and 67ppm Nb₂O₅ from 92m in SYRC024**
- **6m @ 1.21% Li₂O, 121ppm Ta₂O₅ and 52ppm Nb₂O₅ from 13m in SYRC029**
- **5m @ 1.24% Li₂O, 118ppm Ta₂O₅ and 57ppm Nb₂O₅ from 100m in SYRC026**

Based on the intersection angle of the drilling with the modelled pegmatites, downhole widths noted above are interpreted to be close to true widths.

RC drilling in June was completed on 80m spaced sections to infill and test the geometry and down dip continuity of the stacked LCT pegmatites over 850m of strike. Significant zones of pegmatite hosted lithium mineralisation were intersected on all sections (Figures 1 to 8). These results confirmed previous drilling intercepts. Follow up RC drilling will continue to test down dip on these sections and systematically infill intervening sections along an initial 1000m of strike.

Mineralisation is open in all directions with, significantly, a wide zone of mineralisation of 9m @ 1.50% Li₂O from 160m in SYRC014 intersected on the most northern section open to the north and down dip. (ASX 23rd June 2023, Further High-Grade Lithium Results – Youanmi Project)

Field reconnaissance and air photo interpretation has also identified multiple target areas that require follow up mapping, sampling and RC drill testing (Figure 9). A single line of historic wide spaced RAB drilling targeting base metals intersected two pegmatites at the southern end of the present target area about 1000 metres west of the pegmatite outcrop.

This is interpreted to be another parallel zone of stacked LCT pegmatites and was RC drill tested in the recent programme.

Youanmi Lithium Project - Historic Exploration Summary

Historic exploration was outlined in ASX releases dated 9 December 2022 and 6 February 2023. Youanmi sits at the northern end of a 20km long corridor of Lithium, Caesium, Tantalum (“LCT”) pegmatite intrusions that have delivered significant results for other explorers at the southern end of the trend (Figures 9 and 10).

Limited historic exploration at Youanmi included, geological mapping, rock chip sampling, airborne magnetic surveys and RC drilling. Geological mapping has identified a 3km long zone of intermittent outcropping LCT pegmatites located about 1km east of a contact between a late-stage granite and the Youanmi Layered Mafic Complex.

Previous RC drill testing at Youanmi consisted of 54 holes by Lithium Australia (19MYRC005 to 19MYRC058), and 23 holes by Scorpion Minerals (SYRC001 to SYRC022) in wide spaced RC fences along the 3km long zone with the majority drilled in the southern half of the trend. Significant intercepts from previous drilling included:

Lithium Australia:

- 8m @ 1.39% Li₂O from 8m
- 6m @ 1.61% Li₂O from 22m
- 7m @ 1.42% Li₂O from 20m
- 7m @ 1.38% Li₂O from 0m
- 6m @ 1.64% Li₂O from 11m
- 6m @ 1.35% Li₂O from 62m

Scorpion Minerals:

- 9m @ 1.50% Li₂O from 160m
- 9m @ 1.36% Li₂O from 55m
- 10m @ 0.98% Li₂O from 83m
- 6m @ 1.60% Li₂O from 49m
- 7m @ 1.19% Li₂O from 76m
- 9m @ 0.90% Li₂O from 108m
- 5m @ 1.37% Li₂O from 22m
- 4m @ 1.70% Li₂O from 48m
- 6m @ 1.06% Li₂O from 33m
- 5m @ 1.25% Li₂O from 55m
- 5m @ 1.24% Li₂O from 147m
- 6m @ 1.00% Li₂O from 130m
- 5m @ 1.13% Li₂O from 79m
- 6m @ 0.92% Li₂O from 113m
- 6m @ 0.89% Li₂O from 52m
- 4m @ 1.28% Li₂O from 67m

It is important to note that exploration by other explorers to the south has identified significant LCT mineralisation in east-west oriented pegmatites. Shallow dipping pegmatite orientation is a characteristic of significant LCT pegmatite systems.

Next Steps

Scorpion plans to undertake the following exploration programmes over Q3 and Q4 2023 and regular updates on progress will be provided:

- Infill RC drilling of existing targets down dip and along strike
- RC drilling of parallel pegmatites to determine extent and composition
- Follow up geological mapping and rock chip sampling (underway)
- High resolution airborne photography if required
- Auger soil geochemistry aimed at identifying additional pegmatites under shallow soil cover
- Initial Diamond drill testing of existing targets at depth
- Airborne and/or Ground EM surveys

Technical information included in this announcement has previously been provided to the market in releases dated:

19 th December 2022	SCN Expands Lithium Footprint – Major Project Acquisition
6 th February 2023	Youanmi Lithium Project Drilling Commences
23 rd March 2023	Drilling Confirms 3km of LCT Pegmatites Strike at Youanmi
29 th March 2023	Drilling Confirms 3km of LCT Pegmatites Strike – Amended
13 th April 2023	High Grade Lithium Drilling Results - Youanmi Project
15 th May 2023	Youanmi Infill Drilling Underway
30 th May 2023	Youanmi Infill Drilling Completed
8 th June 2023	Scorpion Appoints Lithium Industry Pioneer as CEO
23 rd June 2023	Further High-Grade Lithium Results – Youanmi Project
4 th July 2023	Infill RC Drilling Underway at Youanmi
5 th July 2023	More High-Grade Lithium at Youanmi - 2.36% Li ₂ O
26 th July 2023	Infill RC Drilling Complete at Youanmi
27 th July 2023	Scorpion signs MOU with Sunwoda at Youanmi

This announcement has been authorised by the board of directors of the Company.

-ENDS-

Enquiries

For more information, please contact:

Mr Michael Fotios
Chief Executive Officer
info@scorpionminerals.com.au

Sam Burns
Six Degrees Investor Relations
T +61 (0) 400 164 067

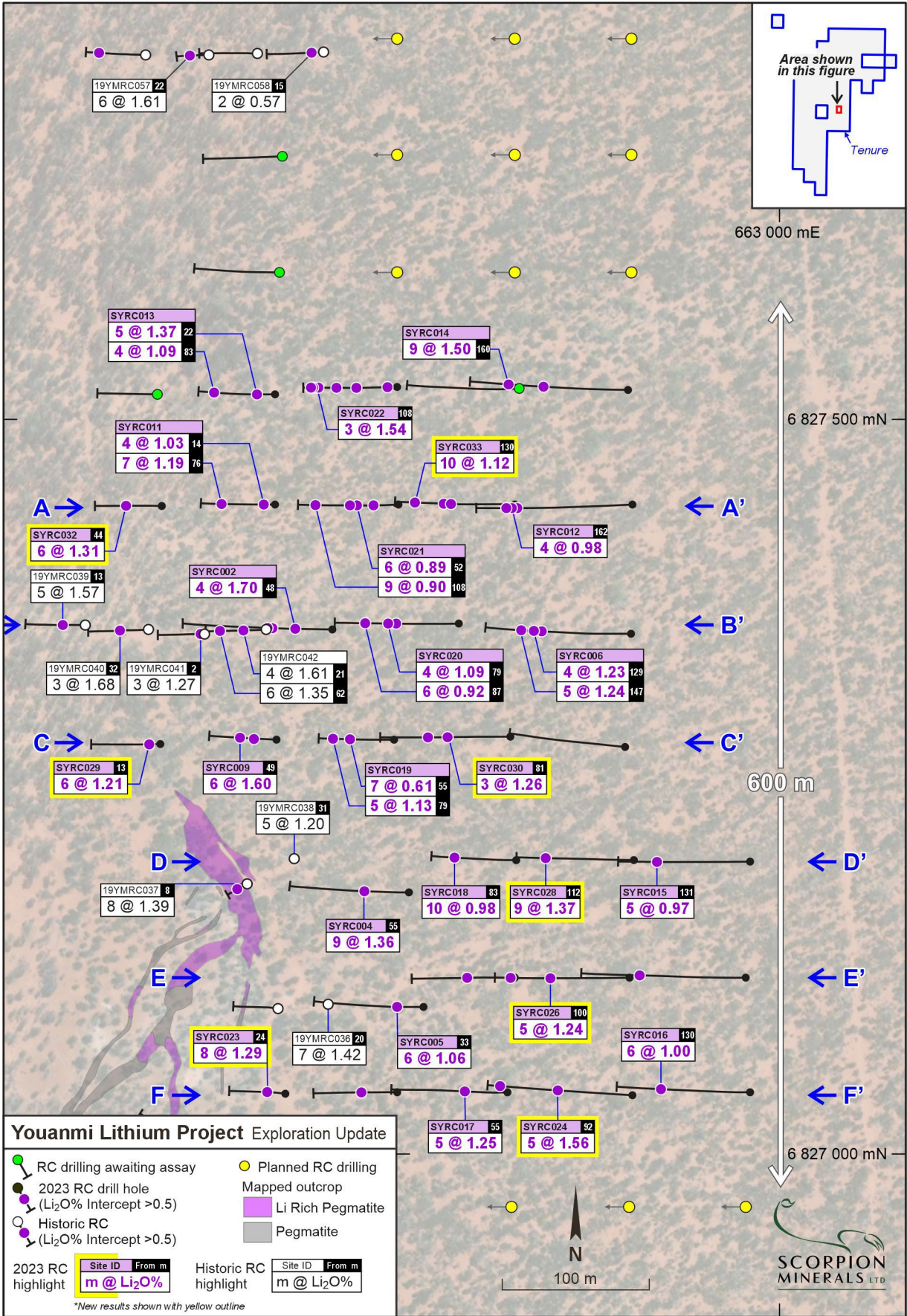


Figure 1: Plan showing mapped pegmatite outcrop and significant RC Drilling intercepts.

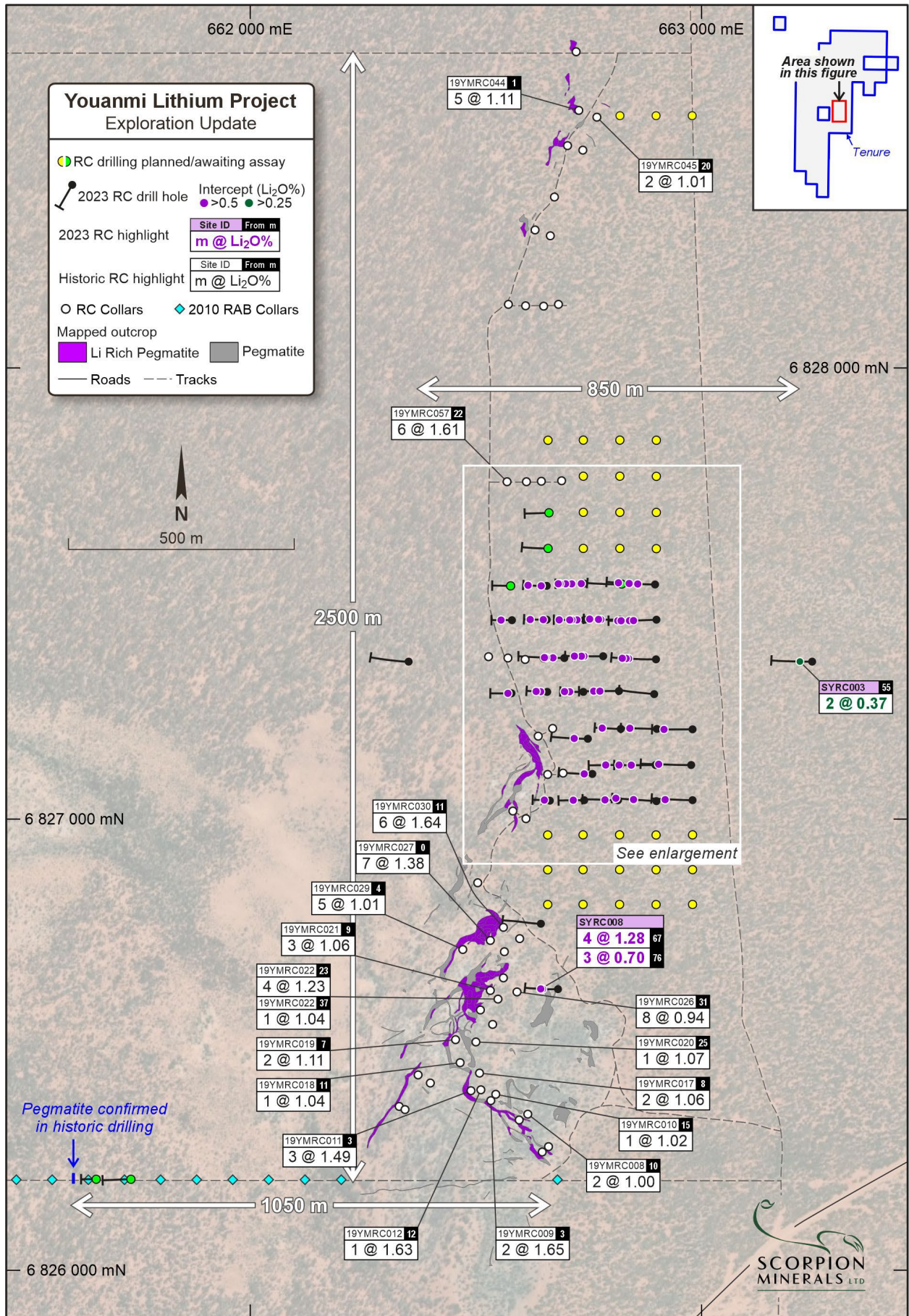


Figure 2: Plan showing mapped pegmatite outcrop and significant RC Drilling intercepts.

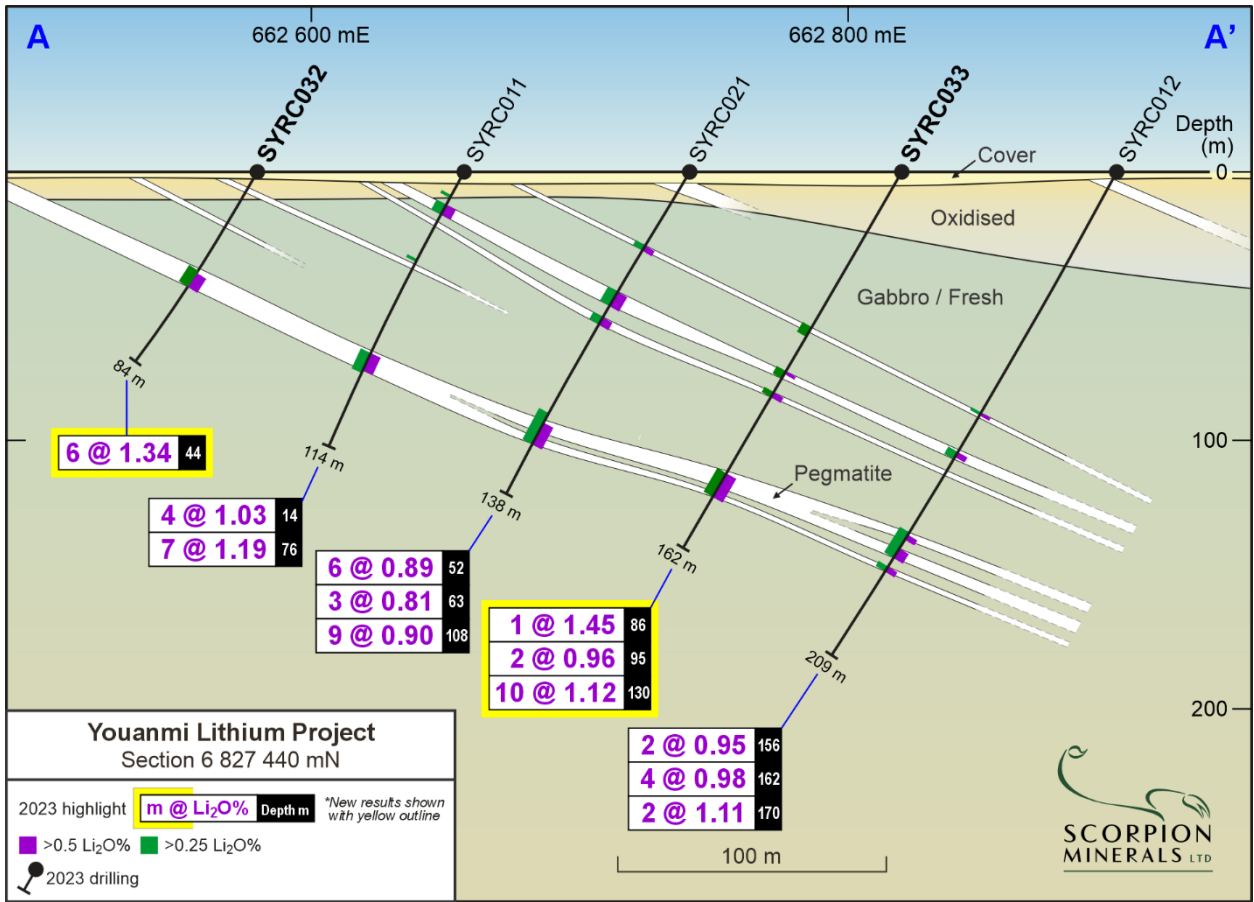


Figure 3: Section A-A' 6 827 440 mN

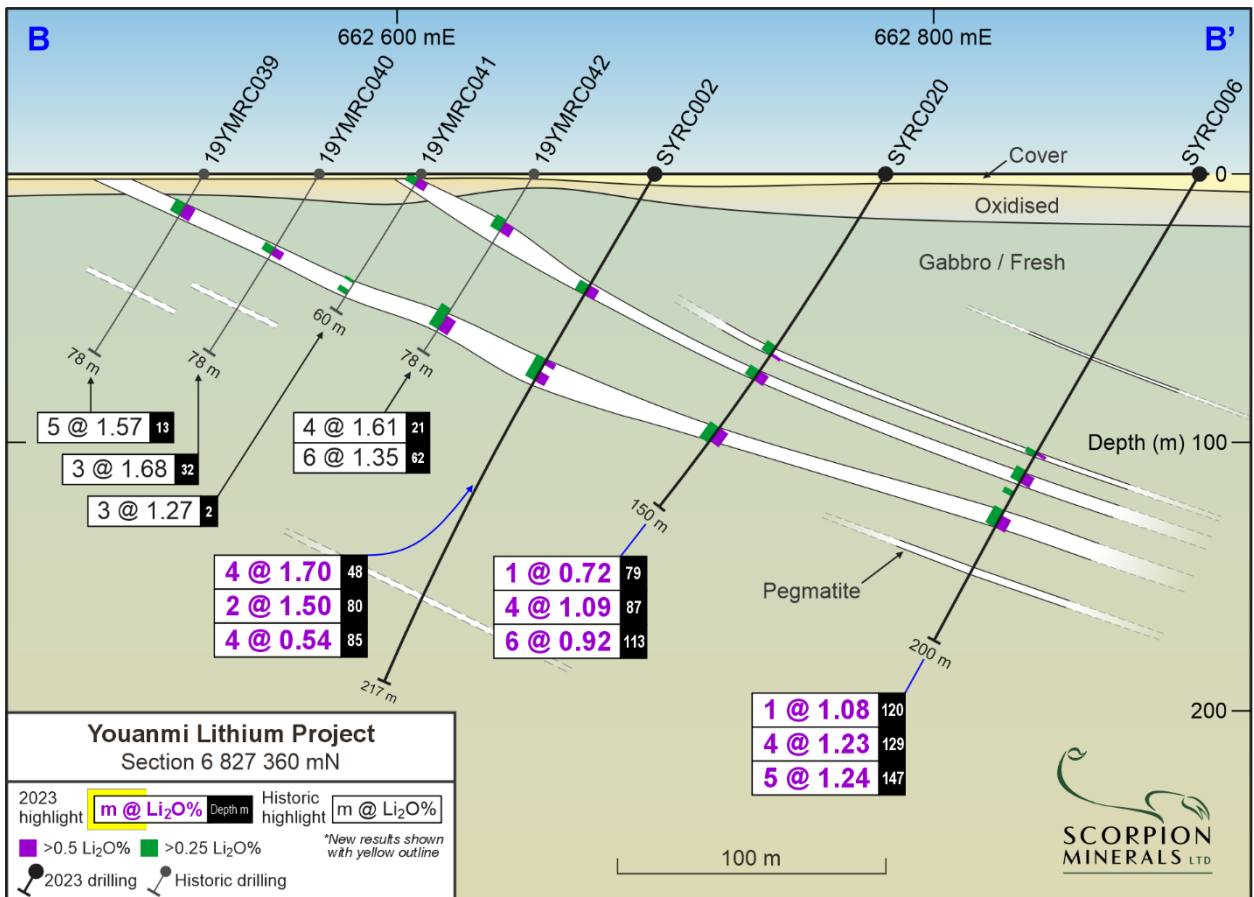


Figure 4: Section B-B' 6 827 360 mN

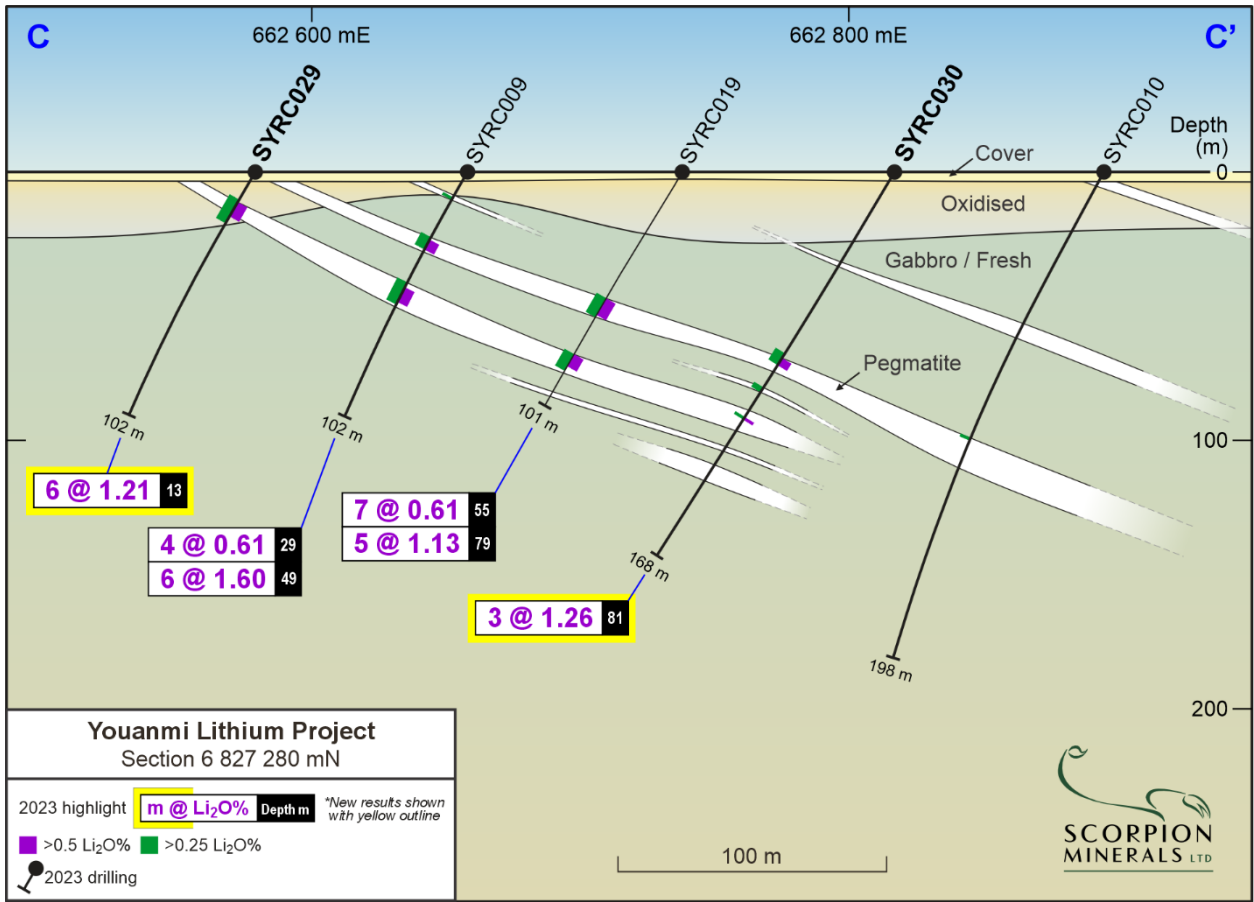


Figure 5: Section C-C' 6 827 280 mN

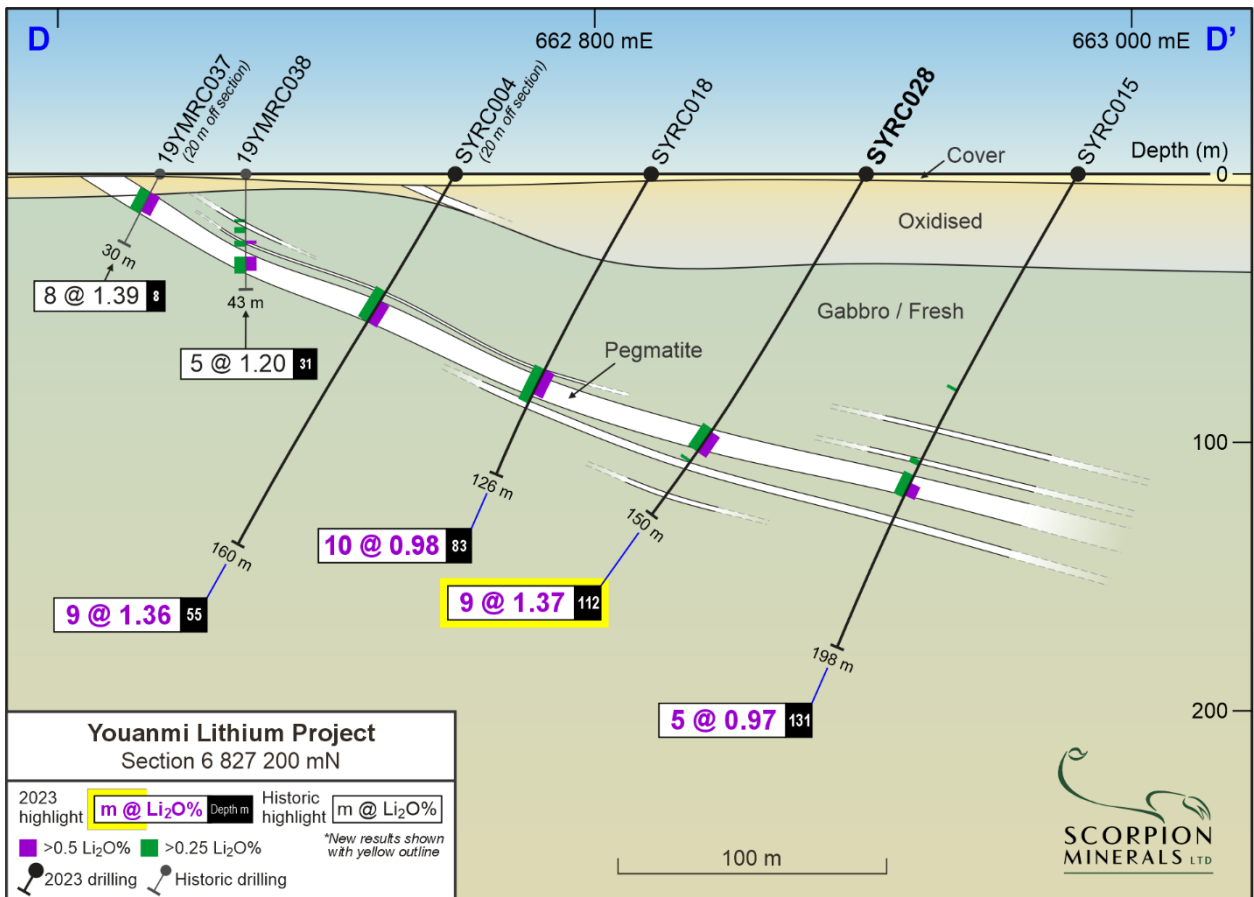


Figure 6: Section D-D' 6 827 200 mN

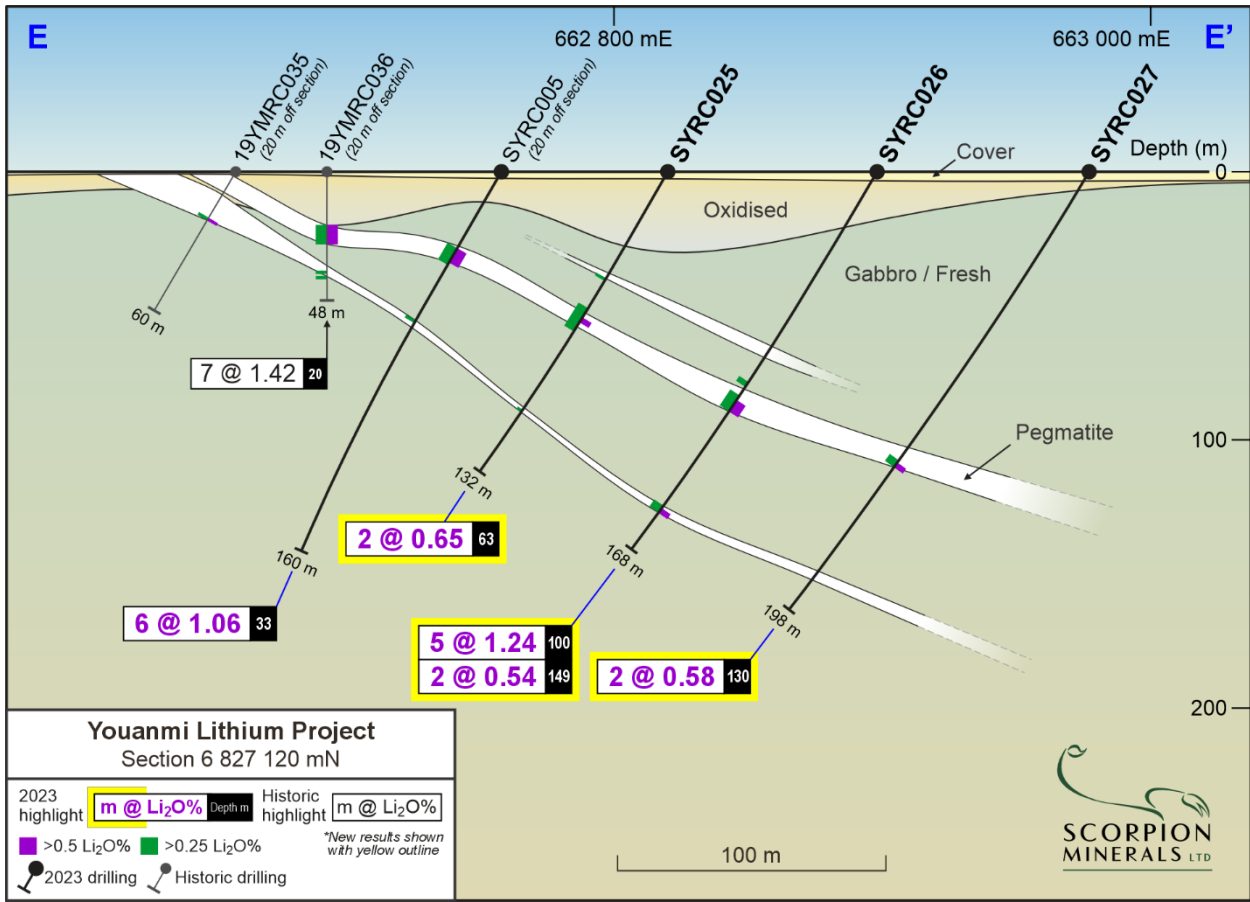


Figure 7: Section E-E' 6 827 120 mN

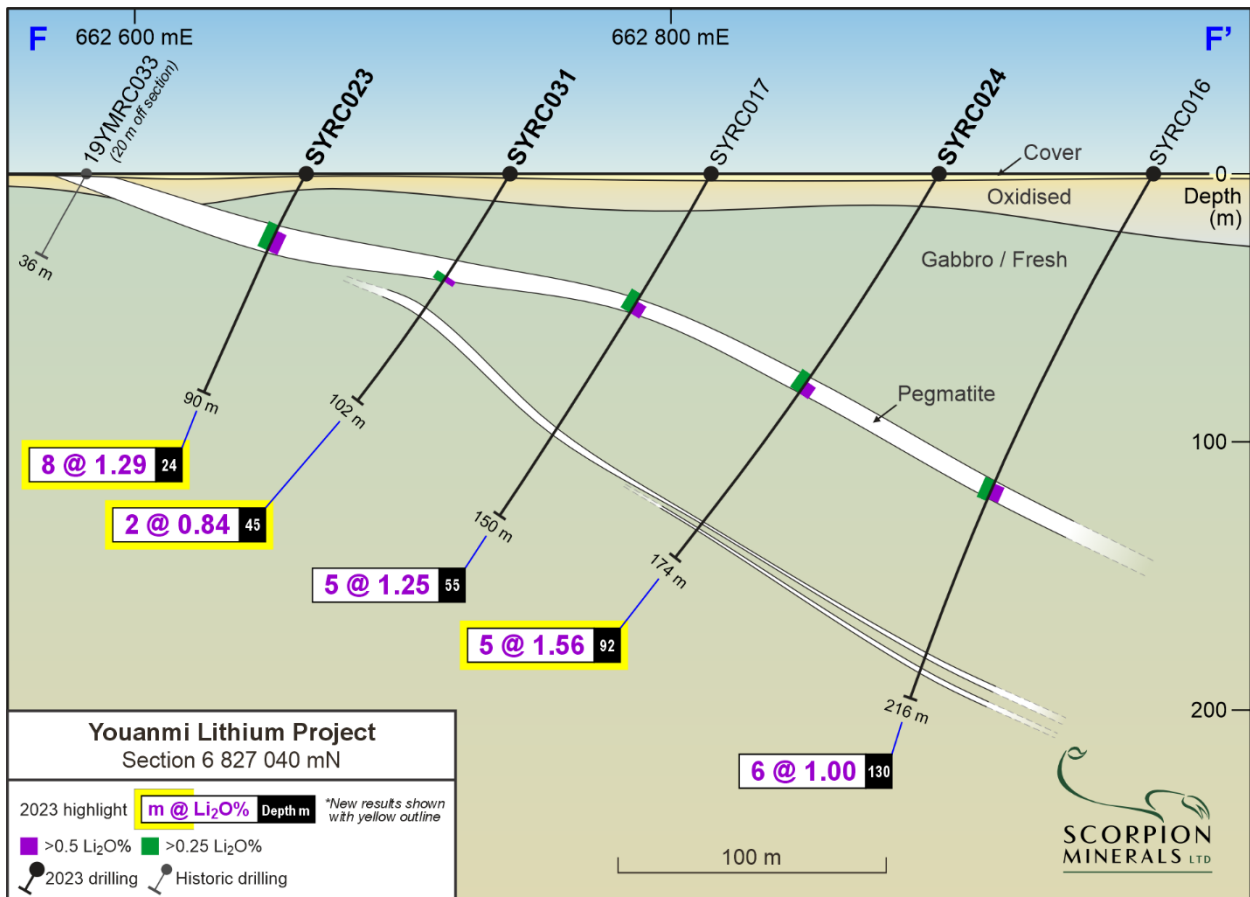


Figure 8: Section F-F' 6 827 040 mN

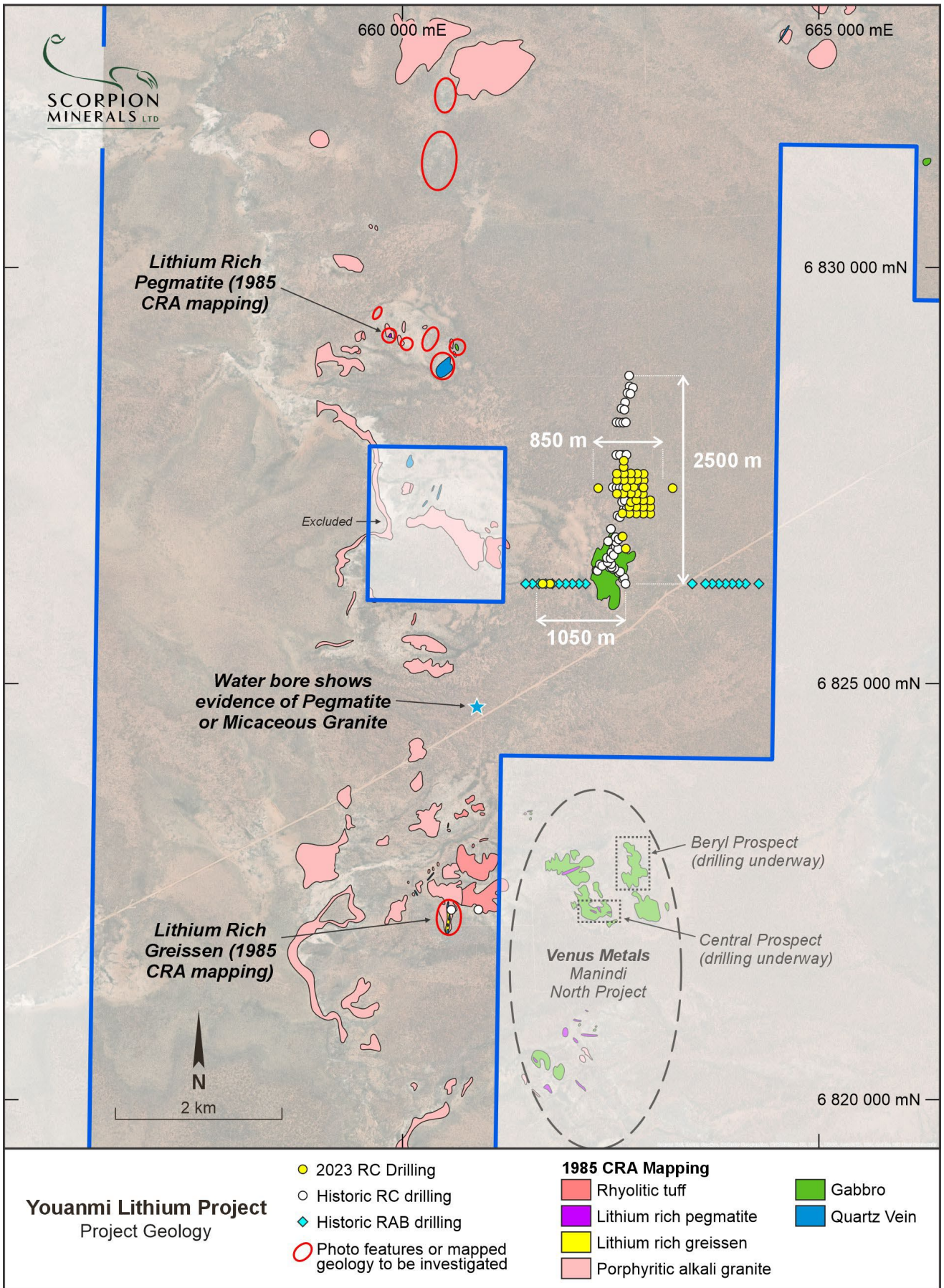


Figure 9: Local Outcrop Geology

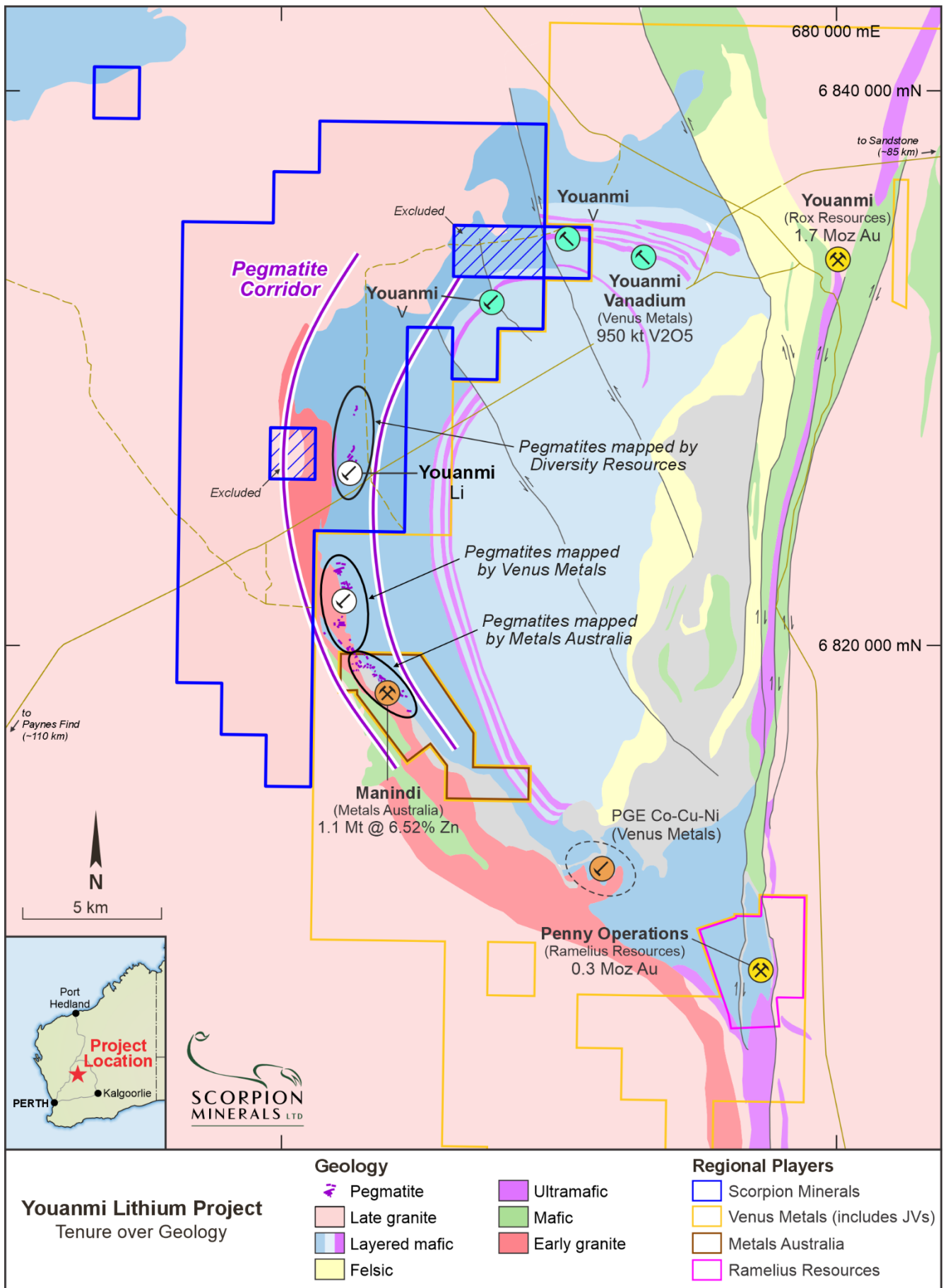


Figure 10: Plan Showing Tenements over Simplified Regional Geology and Adjacent Explorers

Table 1: RC Drilling Results Li₂O >= 0.50 % (lower cut 0.4%, 2m dilution)

Hole ID	North	East	RL	Depth	Dip	Azimuth	From	To	Length	Li ppm	Li ₂ O %	Cs ppm	Rb ppm	Ta ₂ O ₅ ppm	Nb ₂ O ₅ ppm
SYRC023	6827041	662664	480	90	-60	270	24	32	8	5994	1.29	82	2946	85.32	50
SYRC024	6827040	662900	480	174	-60	270	92	97	5	7246	1.56	117	3209	138.23	67
							160	161	1	3050	0.66	43	2680	42.74	64
SYRC025	6827120	662820	480	132	-60	270	63	65	2	3030	0.65	37	1338	96.47	50
SYRC026	6827120	662898	480	168	-60	270	100	105	5	5782	1.24	97	3339	117.96	57
							149	151	2	2485	0.54	41	2685	53.73	64
SYRC027	6827120	662977	480	198	-60	270	130	132	2	2680	0.58	79	3330	114.18	50
SYRC028	6827200	662901	480	150	-60	270	112	121	9	6371	1.37	91	2809	124.83	53
SYRC029	6827279	662579	480	102	-60	270	13	19	6	5617	1.21	68	1993	121.3	52
SYRC030	6827284	662817	480	168	-60	270	81	84	3	5830	1.26	122	1797	149.38	79
							107	108	1	3880	0.84	97	3320	128.22	50
SYRC031	6827042	662740	480	102	-60	270	45	47	2	3900	0.84	78	2925	136.76	72
SYRC032	6827441	662580	480	84	-60	270	44	50	6	6093	1.31	55	2448	104.2	60
SYRC033	6827442	662820	480	162	-60	270	86	87	1	6720	1.45	23	1100	422.5	365
							95	97	2	4450	0.96	28	833	67.77	47
							130	140	10	5207	1.12	84	2235	119.79	82
SYRC034	6826202	661659	480	66	-60	270	Awaiting Results								
SYRC035	6826202	661736	480	126	-60	270	Awaiting Results								
SYRC036	6827517	662577	480	84	-60	270	Awaiting Results								
SYRC037	6827521	662823	480	162	-60	270	Awaiting Results								
SYRC038	6827600	662660	480	120	-60	270	Awaiting Results								
SYRC039	6827679	662662	480	114	-60	270	Awaiting Results								

Notes

Coordinate system GDA94z50, obtained by handheld GPS, accuracy +/- 3m, nominal RL applied.

Based on the intersection angle of the drilling with the modelled pegmatites, downhole widths noted above are interpreted to be close to true widths.

Table 2:RC Drilling Results Li₂O >= 0.25 % (lower cut 0.25%, 2m dilution)

Hole ID	North	East	RL	Depth	Dip	Azimuth	From	To	Length	Li ppm	Li ₂ O %	Cs ppm	Rb ppm	Ta ₂ O ₅ ppm	Nb ₂ O ₅ ppm
SYRC023	6827041	662664	480	90	-60	270	22	32	10	5100	1.1	72	2617	80.71	48
SYRC024	6827040	662900	480	174	-60	270	89	97	8	4923	1.06	108	2184	89.9	45
							160	161	1	3050	0.66	43	2680	42.74	64
SYRC025	6827120	662820	480	132	-60	270	46	47	1	1220	0.26	21	135	4.88	4
							59	69	10	1602	0.34	153	1782	93.23	40
							104	105	1	1140	0.25	27	1795	54.95	57
SYRC026	6827120	662898	480	168	-60	270	92	94	2	1200	0.26	135	380	39.08	14
							98	105	7	4581	0.98	120	2874	121.59	59
							148	151	3	2167	0.47	40	2052	42.74	48
SYRC027	6827120	662977	480	198	-60	270	129	132	3	2203	0.47	71	3495	130.66	57
SYRC028	6827200	662901	480	150	-60	270	111	121	10	5898	1.27	101	2686	127.12	56
							125	126	1	1900	0.41	386	2840	8.55	4
SYRC029	6827279	662579	480	102	-60	270	12	22	10	3771	0.81	98	1541	80.71	37
SYRC030	6827284	662817	480	168	-60	270	79	84	5	3998	0.86	199	1493	99.64	51
							94	96	2	1750	0.38	54	2548	74.49	72
							107	108	1	3880	0.84	97	3320	128.22	50
SYRC031	6827042	662740	480	102	-60	270	45	48	3	3043	0.66	92	2222	126.18	69
SYRC032	6827441	662580	480	84	-60	270	43	50	7	5420	1.17	62	2251	92.45	54
SYRC033	6827442	662820	480	162	-60	270	67	71	4	1238	0.27	54	850	46.71	35
							86	89	3	3370	0.73	49	1310	334.58	281
							95	97	2	4450	0.96	28	833	67.77	47
							130	140	10	5207	1.12	84	2235	119.79	82
SYRC034	6826202	661659	480	66	-60	270	Awaiting Results								
SYRC035	6826202	661736	480	126	-60	270	Awaiting Results								
SYRC036	6827517	662577	480	84	-60	270	Awaiting Results								
SYRC037	6827521	662823	480	162	-60	270	Awaiting Results								
SYRC038	6827600	662660	480	120	-60	270	Awaiting Results								
SYRC039	6827679	662662	480	114	-60	270	Awaiting Results								

Notes

Coordinate system GDA94z50, obtained by handheld GPS, accuracy +/- 3m, nominal RL applied.

Based on the intersection angle of the drilling with the modelled pegmatites, downhole widths noted above are interpreted to be close to true widths.

About Scorpion Minerals Limited

Scorpion Minerals Limited (ASX:SCN) is an Australian mineral exploration and resource development company with a focus on creating wealth for shareholders through the discovery of world-class deposits, over a diversified range of minerals. Our current efforts are centred on our Pharos and Youanmi Projects, located in the Murchison Province of Western Australia.

The Pharos Project

The Pharos Project consists of 1,335 square kilometres of granted tenure, located approximately 50km northwest of the small mining town of Cue in the Murchison Mineral Field. The project is easily accessible from the Great Northern Highway by the sealed Jack Hills Mine access road and then by unsealed tracks. Scorpion holds a 100% interest in the project.

The project is prospective for lithium, PGE-Ni-Cu, gold, iron ore, and VMS hosted Cu-Zn-Ag Au mineralisation, and contains the Mt Mulcahy deposit. The 'South Limb Pod' zone of mineralisation at Mt Mulcahy contains a JORC 2012 Measured, Indicated and Inferred Resource of 647,000 tonnes @ 2.4% copper, 1.8% zinc, 0.1% cobalt and 20g/t Ag.

The Youanmi Project

The Youanmi Project consists of 177 square kilometres of granted tenure, located approximately 130 kilometres northeast of the small mining centre of Payne's Find in the East Murchison Mineral Field. The project is easily accessible from the Great Northern Highway by the Payne's Find-Sandstone Road which cuts the southern end of the project area and then by unsealed station tracks. Scorpion holds an option to purchase a 100% interest in the project.

The project is prospective for lithium, PGE-Ni-Cu, gold and vanadium mineralisation.

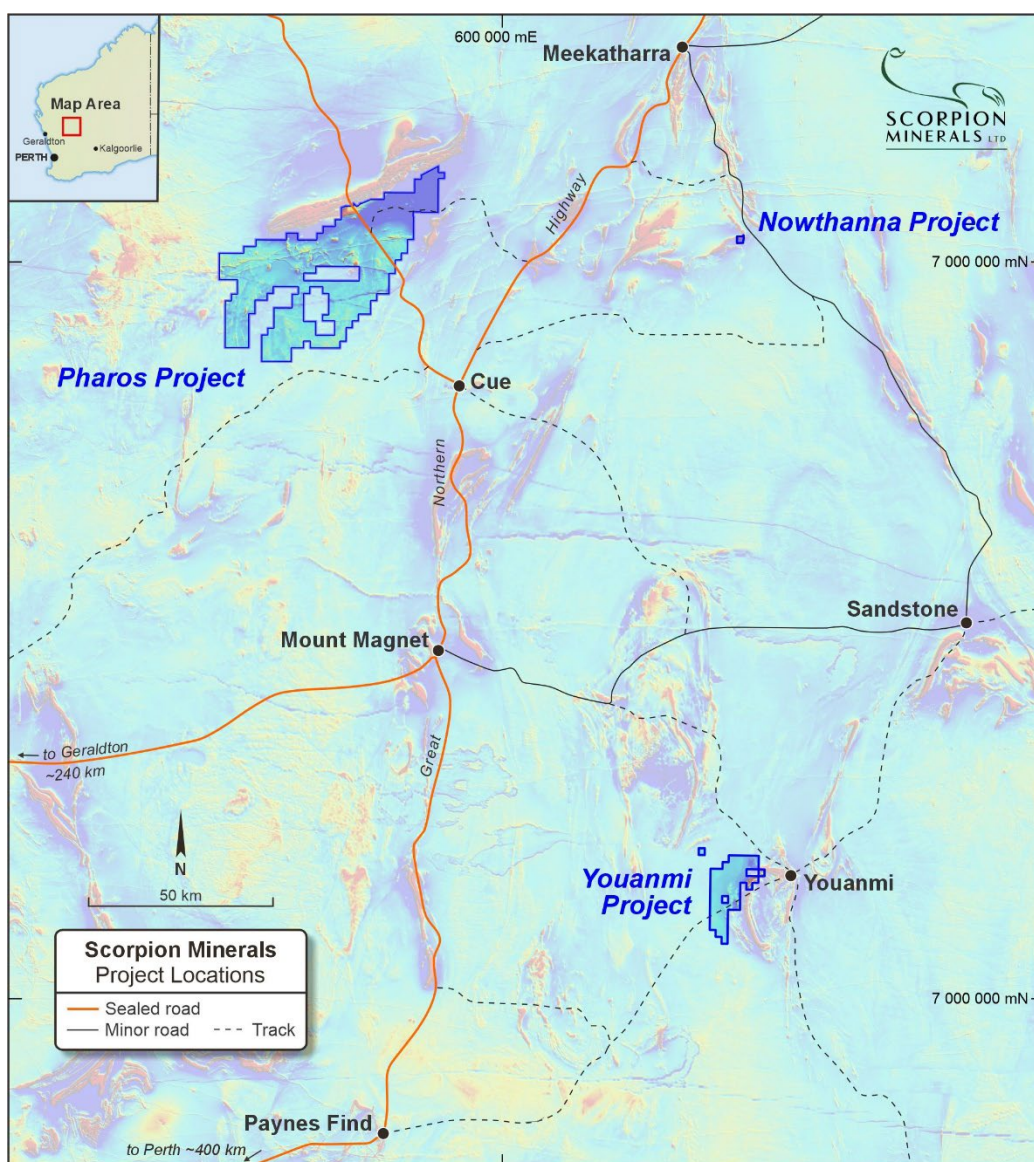


Figure 11: Location of Scorpion Minerals Pharos, Youanmi and Nowthanna Projects

Table 3: Current Mineral Resource Estimate, Mt Mulcahy Project

(refer ASX release 25/9/2014 “Maiden Copper - Zinc Resource at Mt Mulcahy”, which also contains a list of significant drill intersections for the deposit, listed within that report at Table 2)

Mt Mulcahy South Limb Pod Mineral Resource Estimate											
Resource Category	Grade						Contained Metal				
	Tonnes	Cu (%)	Zn (%)	Co (%)	Ag (g/t)	Au (g/t)	Cu (t)	Zn (t)	Co (t)	Ag (oz)	Au (oz)
Measured	193,000	3.0	2.3	0.1	25	0.3	5,800	4,400	220	157,000	2,000
Indicated	372,000	2.2	1.7	0.1	19	0.2	8,200	6,300	330	223,000	2,000
Inferred	82,000	1.5	1.3	0.1	13	0.2	1,200	1,100	60	35,000	
TOTAL	647,000	2.4	1.8	0.1	20	0.2	15,200	11,800	610	415,000	4,000

Competent Persons Statement 1

The information in this report that relates to the Exploration Results and Mineral Resources at the Mt Mulcahy and Pharos Projects is based on information reviewed by Mr Michael Fotios, who is a member of the Australian Institute of Mining and Metallurgy. Mr Fotios is CEO of Scorpion Minerals Limited and has sufficient experience which is relevant to the style of mineralisation and types of deposit under consideration and to the activity he is undertaking to qualify as Competent Persons as defined in the 2012 Edition of the ‘Australasian Code for Reporting of Exploration Results, Mineral Resources and Ore Reserves (JORC Code 2012)’. Mr Fotios consents to the inclusion of the information in the form and context in which it appears.

Competent Persons Statement 2

The information in this report that relates to the Mt Mulcahy Mineral Resource is based on information originally compiled by Mr Rob Spiers, an independent consultant to Scorpion Minerals Limited and a then full-time employee and Director of H&S Consultants Pty Ltd (formerly Hellman & Schofield Pty Ltd), and reviewed by Mr Fotios. This information was originally issued in the Company’s ASX announcement “Maiden Copper-Zinc Resource at Mt Mulcahy”, released to the ASX on 25th September 2014. The Company confirms that it is not aware of any new information or data that materially affects the information included in the original market announcements. The Company confirms that the form and context in which the findings are presented have not materially modified from the original market announcements.

Forward Looking Statements

Scorpion Minerals Limited has prepared this announcement based on information available to it. No representation or warranty, express or implied, is made as to the fairness, accuracy, completeness or correctness of the information, opinions and conclusions contained in this announcement. To the maximum extent permitted by law, none of Scorpion Minerals Limited, its Directors, employees or agents, advisers, nor any other person accepts any liability, including, without limitation, any liability arising from fault or negligence on the part of any of them or any other person, for any loss arising from the use of this announcement or its contents or otherwise arising in connection with it. This announcement is not an offer, invitation, solicitation or other recommendation with respect to the subscription for, purchase or sale of any security, and neither this announcement nor anything in it shall form the basis of any contract or commitment whatsoever. This announcement may contain forward looking statements that are subject to risk factors associated with exploration, mining and production businesses. It is believed that the expectations reflected in these statements are reasonable but they may be affected by a variety of variables and changes in underlying assumptions which could cause actual results or trends to differ materially, including but not limited to price fluctuations, actual demand, currency fluctuations, drilling and production results, reserve estimations, loss of market, industry competition, environmental risks, physical risks, legislative, fiscal and regulatory changes, economic and financial market conditions in various countries and regions, political risks, project delay or advancement, approvals and cost estimate.

JORC 2012 Table

SECTION 1 – Sample Techniques and Data

Criteria	JORC Code explanation	Commentary
Sampling techniques	<ul style="list-style-type: none"> Nature and quality of sampling (eg cut channels, random chips, or specific specialised industry standard measurement tools appropriate to the minerals under investigation, such as down hole gamma sondes, or handheld XRF instruments, etc). These examples should not be taken as limiting the broad meaning of sampling. Include reference to measures taken to ensure sample representivity and the appropriate calibration of any measurement tools or systems used. Aspects of the determination of mineralisation that are Material to the Public Report. In cases where 'industry standard' work has been done this would be relatively simple (eg 'reverse circulation drilling was used to obtain 1 m samples from which 3 kg was pulverised to produce a 30 g charge for fire assay'). In other cases more explanation may be required, such as where there is coarse gold that has inherent sampling problems. Unusual commodities or mineralisation types (eg submarine nodules) may warrant disclosure of detailed information. 	<p><u>RC Drilling by Lithium Australia NL in 2019</u></p> <ul style="list-style-type: none"> Sampling technique for Reverse Circulation (RC) drilling was appropriate and industry standard. 1 m split samples of approximately 3-4 kg were collected from a rig-mounted cyclone and adjustable cone splitter (checks were made before and during drilling by the geologist to ensure the splitter box was level and sample splits representative). Certified standards, blanks and duplicates accounted for 10% of the total samples submitted to the lab. Duplicate samples were collected to check repeatability and blanks were inserted to check for contamination. Lithium mineralisation (lepidolite) was observed in RC drill cuttings. <p><u>Historic Rock Chip Sampling</u></p> <ul style="list-style-type: none"> Rock chip samples were collected to best represent the source material. <p><u>RC Drilling by Scorpion Minerals</u></p> <ul style="list-style-type: none"> Sampling technique for Reverse Circulation (RC) drilling was appropriate and industry standard. 1 m split samples of approximately 3-4 kg were collected from a rig-mounted cyclone and cone splitter (checks were made before and during drilling by the geologist to ensure the splitter box was level and sample splits representative).
Drilling techniques	<ul style="list-style-type: none"> Drill type (e.g. core, reverse circulation, open-hole hammer, rotary air blast, auger, Bangka, sonic, etc) and details (eg core diameter, triple or standard tube, depth of diamond tails, face-sampling bit or other type, whether core is oriented and if so, by what method, etc). 	<p><u>RC Drilling by Lithium Australia NL in 2019</u></p> <ul style="list-style-type: none"> RC drilling was carried out by Westside Drilling Pty Ltd using a truck-mounted MK10 Almet Masters RC drill rig. RC holes in the programme have been drilled on a variety of azimuths and dips. <p><u>RC Drilling by Scorpion Minerals</u></p> <ul style="list-style-type: none"> RC drilling carried out by iDrilling using a Hydco 350RC drill rig Holes drilled at -60 degrees to the West at a 270 degree azimuth.
Drill sample recovery	<ul style="list-style-type: none"> Method of recording and assessing core and chip sample recoveries and results assessed. Measures taken to maximise sample recovery and ensure representative nature of the samples. Whether a relationship exists between sample recovery and grade and whether sample bias may have occurred due to preferential loss/gain of fine/coarse material. 	<ul style="list-style-type: none"> Bulk waste samples from the cone splitter were assessed by the geologist and recorded in the logs as high, medium or low. After every metre drilled the driller ensured the entire sample was blown out by lifting the bit and running air down the hole and up the tube before drilling continued. No recovery issues were reported by the geologist.
Logging	<ul style="list-style-type: none"> Whether core and chip samples have been geologically and geotechnically logged to a level of detail to support 	<ul style="list-style-type: none"> RC drill samples were geologically logged to a level of detail to support future Mineral Resource estimation studies.

Criteria	JORC Code explanation	Commentary
	<p>appropriate Mineral Resource estimation, mining studies and metallurgical studies.</p> <ul style="list-style-type: none"> Whether logging is qualitative or quantitative in nature. Core (or costean, channel, etc) photography. The total length and percentage of the relevant intersections logged. 	<ul style="list-style-type: none"> Relevant data fields included weathering, lithology, minerals, colour, grain size, veins, recovery and moisture. Samples were geologically logged onto hardcopy logging sheets and later transferred into a database. All wet-sieved logging samples were collected into chip-trays and stored for future reference. All drill holes were logged in full. The database contains lithological data for all holes in the database. Rock chip samples were geologically logged.
Sub-sampling techniques and sample preparation	<ul style="list-style-type: none"> If core, whether cut or sawn and whether quarter, half or all core taken. If non-core, whether riffled, tube sampled, rotary split, etc and whether sampled wet or dry. For all sample types, the nature, quality and appropriateness of the sample preparation technique. Quality control procedures adopted for all sub-sampling stages to maximise representivity of samples. Measures taken to ensure that the sampling is representative of the in situ material collected, including for instance results for field duplicate/second-half sampling. Whether sample sizes are appropriate to the grain size of the material being sampled. 	<ul style="list-style-type: none"> No Diamond drilling has been undertaken. Sampling has been by RC drilling through a rig-mounted cyclone and adjustable cone splitter. Sampling technique is appropriate and industry standard. Quality control procedures adopted to ensure maximum representivity of samples. Sample sizes are considered to be appropriate to accurately represent the lithium mineralisation at Youanmi based on the style of mineralisation and the thickness and consistency of the intersections.
Quality of assay data and laboratory tests	<ul style="list-style-type: none"> The nature, quality and appropriateness of the assaying and laboratory procedures used and whether the technique is considered partial or total. For geophysical tools, spectrometers, handheld XRF instruments, etc, the parameters used in determining the analysis including instrument make and model, reading times, calibrations factors applied and their derivation, etc. Nature of quality control procedures adopted (e.g. standards, blanks, duplicates, external laboratory checks) and whether acceptable levels of accuracy (i.e lack of bias) and precision have been established. 	<p><u>RC Drilling by Lithium Australia NL in 2019</u></p> <ul style="list-style-type: none"> Samples collected from the drilling were sent to Nagrom in Kelmscott, WA for sample preparation and analysis. Samples were analysed for a suite of 11 elements, i.e., Li, Rb, Cs, Be, Bi, Sn, Ta, Al, Fe, K and Si. Analysis completed by geochemical procedure ICP005 using peroxide fusion digestion and ICP-MS and ICP-OES analytical methods. Field duplicates, certified standards and blanks accounted for 10% of the samples collected from the drilling and sent to the lab. Field and internal QAQC samples produced results deemed acceptable. <p><u>RC Drilling by Scorpion Minerals</u></p> <ul style="list-style-type: none"> Samples collected from the drilling were sent to Nagrom in Kelmscott, WA for sample preparation and analysis. Samples were analysed for 8 elements. Li, Rb, Cs, Be, Sn, Ta, Nb and W. <p><u>Historic Rock Chip Sampling</u></p> <ul style="list-style-type: none"> Samples range from about 500 grams to 1 kilogram in weight, with each sample comprising several pieces.

Criteria	JORC Code explanation	Commentary
		<ul style="list-style-type: none"> All samples were assayed for Cs, Li, Nb, Rb, Sn, Ta and W. Some batches were also assayed for extra multi elements. Analyses were performed by Intertek Genalysis and SGS in Perth Most samples were digested with either a four-acid mix (nitric, hydrochloric, perchloric, hydrofluoric) or by sodium peroxide fusion in zirconia or nickel crucibles, followed by ICP-MS. A few elements were analysed by X-ray fluorescence. Both laboratories are NATA certified.
Verification of sampling and assaying	<ul style="list-style-type: none"> The verification of significant intersections by either independent or alternative Company personnel. The use of twinned holes. Documentation of primary data, data entry procedures, data verification, data storage (physical and electronic) protocols. Discuss any adjustment to assay data. 	<ul style="list-style-type: none"> No independent verification of sampling has been reported. No twinning of holes. Primary data is captured using industry standard worksheets. No adjustments were made to any of the assay data.
Location of data points	<ul style="list-style-type: none"> Accuracy and quality of surveys used to locate drill holes (collar and down-hole surveys), trenches, mine workings and other locations used in Mineral Resource estimation. Specification of the grid system used. Quality and adequacy of topographic control. 	<ul style="list-style-type: none"> The RC drill hole locations (collars) were picked-up using a Garmin GPS with +/-3m accuracy and considered adequate for first-pass drilling. Rock chip samples were located using a Garmin GPS with +/-3m accuracy and considered adequate for this purpose. Grid systems used were Geodetic datum: GDA 94; Projection: MGA, Zone 50.
Data spacing and distribution	<ul style="list-style-type: none"> Data spacing for reporting of Exploration Results. Whether the data spacing and distribution is sufficient to establish the degree of geological and grade continuity appropriate for the Mineral Resource and Ore Reserve estimation procedure(s) and classifications applied. Whether sample compositing has been applied. 	<ul style="list-style-type: none"> RC drilling targeting mineralised horizons was completed on approximately 80 m spaced sections with drill hole spacing of approximately 40 to 80m. Examination of drilling results will be required to determine if this is sufficient to establish the degree of geological and grade continuity appropriate for the Mineral Resource estimation procedures.
Orientation of data in relation to geological structure	<ul style="list-style-type: none"> Whether the orientation of sampling achieves unbiased sampling of possible structures and the extent to which this is known, considering the deposit type. If the relationship between the drilling orientation and the orientation of key mineralised structures is considered to have introduced a sampling bias, this should be assessed and reported if material. 	<ul style="list-style-type: none"> The dip of the pegmatites is approximately 20-40° to the east. Holes were oriented appropriately at right angles to the stratigraphy.
Sample security	<ul style="list-style-type: none"> The measures taken to ensure sample security. 	<p><u>RC Drilling by Lithium Australia NL in 2019</u></p> <ul style="list-style-type: none"> Industry standard measures were taken to ensure sample security. Chain of custody of RC drilling samples was managed by Lithium Australia personnel. All sample bags were properly sealed and couriered from Mt Magnet to Perth. <p><u>RC Drilling by Scorpion Minerals 2023</u></p> <ul style="list-style-type: none"> Samples were stored in a fenced area on site. Chain of custody of samples was managed by Scorpion Minerals personnel. All sample were transported by Scorpion Minerals personnel or Company representatives to Nagrom in Perth.

Criteria	JORC Code explanation	Commentary
Audits or reviews	<ul style="list-style-type: none"> The results of any audits or reviews of sampling techniques and data. 	<ul style="list-style-type: none"> No audits or a review have yet been undertaken.

Section 2 Reporting of Exploration Results

Criteria	JORC Code explanation	Commentary
Mineral tenement and land tenure status	<ul style="list-style-type: none"> Type, reference name/number, location and ownership including agreements or material issues with third parties such as joint ventures, partnerships, overriding royalties, native title interests, historical sites, wilderness or national park and environmental settings. The security of the tenure held at the time of reporting along with any known impediments to obtaining a licence to operate in the area. 	<ul style="list-style-type: none"> E 57/958, E 57/1049 and E 57/1056 are held by Diversity Resources Pty Ltd, a private company. E 57/1377 is held by Scorpion Minerals Limited. All tenements are in good standing. Terms of the agreement between Diversity Resources and Scorpion Minerals is discussed in ASX announcement dated 19/12/2022 titled “SCN Expands Lithium Footprint – Major Project Acquisition”
Exploration done by other parties	<ul style="list-style-type: none"> Acknowledgment and appraisal of exploration by other parties. 	<ul style="list-style-type: none"> The tenement area has been historically explored by many explorers since 1967. Australian Gold Resources Limited (AGR) explored for vanadium within tenement E57/978. Lithium Australia NL completed the RC drilling in 2019.
Geology	<ul style="list-style-type: none"> Deposit type, geological setting and style of mineralisation. 	<ul style="list-style-type: none"> The project area lies on the northern part of the Youanmi Complex, a layered gabbroic intrusion. The tenements host abundant lithium pegmatites intruding layered mafic rocks, with the latter also hosting vanadium-rich magnetite horizons. The pegmatites are strongly fractionated with the dominant lithium mineral being lepidolite (a lithium mica). Within E57/978 there are also vanadiferous units that have been dislocated by a major fault. To the east of the fault, they strike east-west with a moderate dip to the south. To the west the units are offset by a number of minor faults and strike northeast-southwest, dipping moderately to the southeast. Oxidised mineralisation extends to between 20 m and 50 m, with an average depth of 40 m. There is minimal overburden.
Drill hole Information	<ul style="list-style-type: none"> A summary of all information material to the understanding of the exploration results including a tabulation of the following information for all Material drill holes: If the exclusion of this information is justified on the basis that the information is not Material and this exclusion does not detract from the understanding of the report, the Competent Person should clearly explain why this is the case. 	<ul style="list-style-type: none"> Refer to the body of text of this report and relevant Tables for information material to the understanding of the exploration results.
Data aggregation methods	<ul style="list-style-type: none"> In reporting Exploration Results, weighting averaging techniques, maximum and/or minimum grade truncations (eg cutting of high grades) and cut-off grades are usually 	<p><u>RC Drilling by Lithium Australia NL in 2019</u></p> <ul style="list-style-type: none"> Significant RC drilling intervals have been chosen using a 0.5% Li₂O cut-off and 2 m internal dilution.

Criteria	JORC Code explanation	Commentary
	<p><i>Material and should be stated.</i></p> <ul style="list-style-type: none"> Where aggregate intercepts incorporate short lengths of high grade results and longer lengths of low grade results, the procedure used for such aggregation should be stated and some typical examples of such aggregations should be shown in detail. The assumptions used for any reporting of metal equivalent values should be clearly stated. 	<ul style="list-style-type: none"> No cutting of high grades has occurred. RC Drilling by Scorpion Minerals 2023 Significant RC drilling intervals have been chosen using a 0.5% Li₂O cut-off and 2 m internal dilution. No cutting of high grades has occurred.
Relationship between mineralisation widths and intercept lengths	<ul style="list-style-type: none"> These relationships are particularly important in the reporting of Exploration Results. If the geometry of the mineralisation with respect to the drill hole angle is known, its nature should be reported. If it is not known and only the down hole lengths are reported, there should be a clear statement to this effect (eg 'down hole length, true width not known'). 	<ul style="list-style-type: none"> The dip of the pegmatites is approximately 20-40° to the east. Holes were oriented appropriately at right angles to the stratigraphy.
Diagrams	<ul style="list-style-type: none"> Appropriate maps and sections (with scales) and tabulations of intercepts should be included for any significant discovery being reported. These should include, but not be limited to a plan view of drill hole collar locations and appropriate sectional views. 	<ul style="list-style-type: none"> See plans and sections included in this report
Balanced reporting	<ul style="list-style-type: none"> Where comprehensive reporting of all Exploration Results is not practicable, representative reporting of both low and high grades and/or widths should be practiced to avoid misleading reporting of Exploration Results. 	<ul style="list-style-type: none"> Reported results considered representative.
Other substantive exploration data	<ul style="list-style-type: none"> Other exploration data, if meaningful and material, should be reported including (but not limited to): geological observations; geophysical survey results; geochemical survey results; bulk samples – size and method of treatment; metallurgical test results; bulk density, groundwater, geotechnical and rock characteristics; potential deleterious or contaminating substances. 	<ul style="list-style-type: none"> All material exploration data has been included.
Further work	<ul style="list-style-type: none"> The nature and scale of planned further work (eg tests for lateral extensions or depth extensions or large-scale step-out drilling). Diagrams clearly highlighting the areas of possible extensions, including the main geological interpretations and future drilling areas, provided this information is not commercially sensitive. 	<ul style="list-style-type: none"> Planned activities discussed in text. Refer to text and diagrams in body of this release.