



# The Manna Lithium Project

## Building the Next West Australian Lithium Producer

---

7<sup>th</sup> August 2023 | ASX:GL1

Ron Mitchell – Managing Director

# Important Notice and Disclaimer

These presentation materials and the accompanying verbal presentation (together, the **Presentation Materials**) have been prepared by Global Lithium Resources Limited (**Global Lithium** or **Company**). By receiving the Presentation Materials, you acknowledge and represent to the Company that you have read, understood and accepted the terms of this disclaimer.

You must read this important notice before you attempt to access the Presentation Materials. The information on this page is not part of the Presentation Materials. If you do not understand it, you should consult your professional adviser without delay.

## NOT AN OFFER

These Presentation Materials are for information purposes only. The Presentation Materials do not comprise a prospectus, product disclosure statement or other offering document under Australian law (and will not be lodged with the Australian Securities and Investments Commission) or any other law.

The Presentation Materials also do not constitute or form part of any invitation, offer for sale or subscription or any solicitation for any offer to buy or subscribe for any securities nor shall they or any part of them form the basis of or be relied upon in connection therewith or act as any inducement to enter into any contract or commitment with respect to securities. In particular, these Presentation Materials do not constitute an offer to sell or a solicitation to buy, securities in the United States of America.

## NOT INVESTMENT ADVICE

The Presentation Materials are not investment or financial product advice (nor tax, accounting or legal advice) and are not intended to be used for the basis of making an investment decision. Recipients should obtain their own advice before making any investment decision.

## SUMMARY INFORMATION

The Presentation Materials do not purport to be all inclusive or to contain all information about the Company or any of the assets, current or future, of the Company.

The Presentation Materials contain summary information about the Company and its activities which is current as at the date of the Presentation Materials. The information in the Presentation Materials is of a general nature and does not purport to contain all the information which a prospective investor may require in evaluating a possible investment in the Company or that would be required in a prospectus or product disclosure statement or other offering document prepared in accordance with the requirements of Australian law or the laws of any other jurisdiction, including the United States of America.

The Company does not undertake to provide any additional or updated information whether as a result of new information, future events or results or otherwise.

## FORWARD LOOKING STATEMENTS

Certain statements contained in the Presentation Materials, including information as to the future financial or operating performance of the Company and its business operations, are forward looking statements. Such forward looking statements:

- are necessarily based upon a number of estimates and assumptions that, while considered reasonable by the Company, are inherently subject to significant technical, business, economic, competitive, political and social uncertainties and contingencies;

- involve known and unknown risks and uncertainties that could cause actual events or results to differ materially from estimated or anticipated events or results reflected in such forward looking statements; and may include, among other things, statements regarding estimates and assumptions in respect of prices, costs, results and capital expenditure, and are or may be based on assumptions and estimates related to future technical, economic, market, political, social and other conditions.

The Company disclaims any intent or obligation to publicly update any forward-looking statements, whether as a result of new information, future events or results or otherwise.

The words “believe”, “expect”, “anticipate”, “indicate”, “contemplate”, “target”, “plan”, “intends”, “continue”, “budget”, “estimate”, “may”, “will”, “schedule” and similar expressions identify forward looking statements.

All forward looking statements contained in the Presentation Materials are qualified by the foregoing cautionary statements. Recipients are cautioned that forward looking statements are not guarantees of future performance and accordingly recipients are cautioned not to put undue reliance on forward looking statements due to the inherent uncertainty therein.

## NO LIABILITY

The Company has prepared the Presentation Materials based on information available to it at the time of preparation. No representation or warranty, express or implied, is made as to the fairness, accuracy or completeness of the information, opinions and conclusions contained in the Presentation Materials. To the maximum extent permitted by law, the Company, its related bodies corporate (as that term is defined in the *Corporations Act 2001* (Cth) (**Corporations Act**)) and the officers, directors, employees, advisers and agents of those entities do not accept any responsibility or liability including, without limitation, any liability arising from fault or negligence on the part of any person, for any loss arising from the use of the Presentation Materials or its contents or otherwise arising in connection with it.

## COMPLIANCE STATEMENTS

The Company confirms that it is not aware of any new information or data that materially affects the information in the relevant market announcements, and that the form and context in which the Competent Persons findings are presented have not been materially modified from the original announcements.

Where the Company refers to the Manna Lithium Project production target in this announcement (referencing previous releases made to the ASX), it confirms that it is not aware of any new information or data that materially affects the information included in that announcement and that all material assumptions and technical parameters underpinning the production target estimate or forecast financial information derived from the production target (as applicable) in that announcement continue to apply and have not materially changed. The Company confirms that the form and context in which the Competent Persons findings are presented have not materially changed from the original announcement.

Where the Company refers to Mineral Resources in this announcement (referencing previous releases made to the ASX), it confirms that it is not aware of any new information or data that materially affects the information included in that announcement and all material assumptions and technical parameters underpinning the Mineral Resource estimate with that announcement continue to apply and have not materially changed. The Company confirms that the form and context in which the Competent Persons findings are presented have not materially changed from the original announcement.

# Corporate | People | Culture

# Strategic Highlights – Why Invest & Partner?



## Multi-asset development optionality

- Combined Mineral Resource of **54Mt @ 1.09% Li<sub>2</sub>O**
- Two highly prospective projects provides significant optionality around development and funding alternatives



## JORC compliant resource

- Global Lithium wholly owns **2 of only 14 JORC** compliant lithium resources in Australia listed on the ASX
- Most lithium resources are owned under joint ventures



## Tier 1 jurisdiction

- Located in the **World's best mining jurisdiction of Western Australia**
- Close to existing lithium projects and **major infrastructure**



## Strategic partnerships & well-funded

- **Secured strategic partnerships with blue-chip counterparties** Canmax (formerly Suzhou TA&A) and Mineral Resources (ASX:MIN)
- **Well funded** through to FID on the Manna Lithium Project



## Experienced Board, strong lithium credentials

- **Experienced Board and management** team with deep background in mining, exploration and project development
- MD is the current **Chair of the LME Lithium and Cobalt Committee**



## Value accretive & growth focussed

- Pursue near term **cash flow** opportunities.
- Continue to seek and review **strategic M&A** opportunities
- **Resources diversification** via development of other critical mineral resources



# GL1 Corporate Snapshot (4 August 2023)

## Market Cap

A\$442m

## Share Price

A\$1.70

## Shares on issue

259.8m

## Options<sup>1</sup>

11.5m

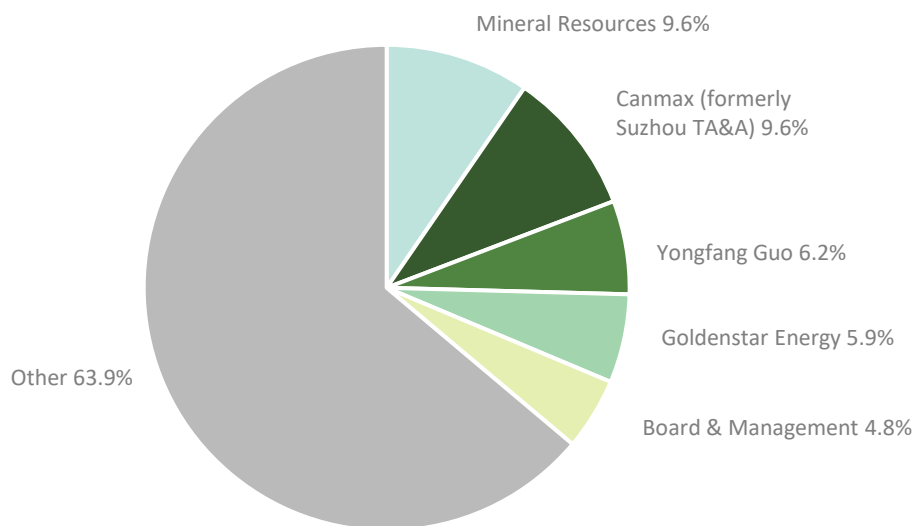
## Cash<sup>2</sup>

A\$62m

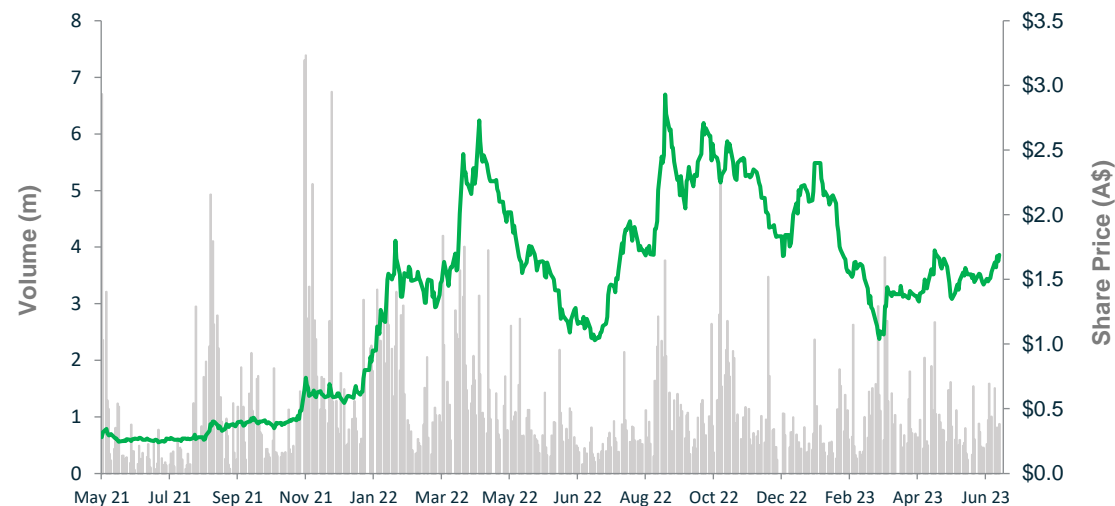
## Equity in KAI<sup>3</sup>

264m (10%)

## Share Register



## ASX share price performance



## Research Coverage



1. Including various terms of performance rights

2. As at 30 June 2023

3. Refer ASX release titled "MANNA LITHIUM PROJECT EXPANSION OF REGIONAL INTERESTS", 26 JUNE 2023, incl. Right Issue of 44m shares.

# Board



**Geoff Jones**  
Non-Executive Chair

Current CEO of MACA Interquip, Non-Executive Director of Rumble Resources (ASX:RTR) and Non-Executive Chair of Ausgold Ltd (ASX:AUC). Previous MD of GR Engineering Services (ASX:GNG). 35 years experience in engineering, project delivery and management in minerals processing.



**Dr Dianmin Chen**  
Non-Executive Director

Founder of Global Lithium with 35 years' experience in metals, mining and capital markets. Former Barrick Gold senior management and Managing Director / CEO of Norton Goldfields Limited.



**Ron Mitchell**  
Managing Director

Current Chair of the LME Lithium and Cobalt Committee; Former Sales Director of Tianqi Lithium & Talison Lithium; 13 years experience in the lithium industry. 7 years living and working in Nth Asia.



**Hayley Lawrance**  
Non-Executive Director

Commercial lawyer; Director and company secretary for +22 years with a mining industry focus including ESG and approvals; Chair of Holyoake Inc.



**Greg Lilleyman**  
Non-Executive Director

Former Fortescue Metals and Rio Tinto executive with 30 years of international experience in the mining sector. Key global contacts and networks throughout the mining sector.



**Warrick Hazeldine**  
Non-Executive Director

Co-founder & NED of Cannings Purple; Non-Executive Chair ChemX (ASX:CMX), 20 years capital markets experience with a key focus on battery minerals and energy transition.



**Kevin Hart**  
Company Secretary

Chartered accountant with +30 years experience in accounting and administration of ASX listed public companies; Principal of Endeavour Corporate.

# Management & Leadership



**Matt Allen**  
**Chief Financial Officer**

Chartered accountant and finance professional with +25 years experience in debt and equity funding, operation and management of ASX public listed companies including rare earth developer Hastings Technology Metals (ASX:HAS). Commencing April 2023.



**Simon Corrigan**  
**Approvals and Corporate Affairs Advisor**

More than 20 years of experience in approvals, government relations and community relations. Chief of Staff in the WA Government and Senior Corporate Affairs and Approvals roles at CITIC Pacific Mining, Atlas Iron and BHP.



**Dr Tony Chamberlain**  
**Project Director**

PhD in metallurgy with +25 years experience in the resources industry including several battery and new world metals ASX listed public companies; former COO at Vimy Resources and BCI Minerals.



**Nicole Stein**  
**Community Relations Manager**

Experienced community relations and strategic communications professional with 20 years living and working in regional Western Australia.



**Stuart Peterson**  
**General Manager Exploration**

Specialist Exploration Geologist with 16 years experience in Australia and offshore; Member of the Australasian Institute of Mining and Metallurgy AusIMM.



**Trevor Ennis-John**  
**Environmental and Land Access Manager**

Environmental professional with 20 years' experience working across iron ore, gold and lithium projects in the Pilbara and Goldfields regions of Western Australia. Masters of Sustainable Development and a Bachelor of Environmental Science.



**Logan Barber**  
**Exploration Manager**

Over 15 years of exploration experience focused on Lithium, Iron Ore, Base and Precious Metals. Execution of the original drilling at Wodgina (ASX: MIN) and extensive geological experience at Marble Bar and Manna.



**Phoebe Yan**  
**Senior Business Analyst**

Over 15 years of commercial experience in the lithium chemicals, mining and infrastructure sectors. Held positions with Tianqi Lithium Energy Australia and Mineral Resources. Master of Accounting and a CPA.

**Resource | Exploration | Growth**





100% Owned Project 1

# Manna Lithium Project

# Manna Lithium Project

## Geology

- Outcropping spodumene bearing pegmatite
- High grade individual pegmatite dykes +20m wide

## Manna Deposit

- 100% ownership acquired<sup>1</sup>
- **Mineral Resource Estimate of 36Mt @ 1.13% Li<sub>2</sub>O<sup>2</sup>**

## Significant Upside

- Significant exploration upside with resource open at depth and to the NE and SW
- **+50,000m RC and diamond drilling program planned in CY2023**

## Infrastructure Rich

- **The World's best** lithium mining jurisdiction – Gold, Nickel and Lithium
- 100km East of Kalgoorlie – 13km North of Trans Australian Railway
- Railway or road options from Kalgoorlie to Esperance Port or Kwinana Port

1. Refer ASX release titled "COMPLETION OF MANNA TRANSACTION AND STRATEGIC PLACEMENT", 15 November 2022.

2. Refer ASX release titled "MANNA LITHIUM RESOURCE GROWS", 26 July 20223



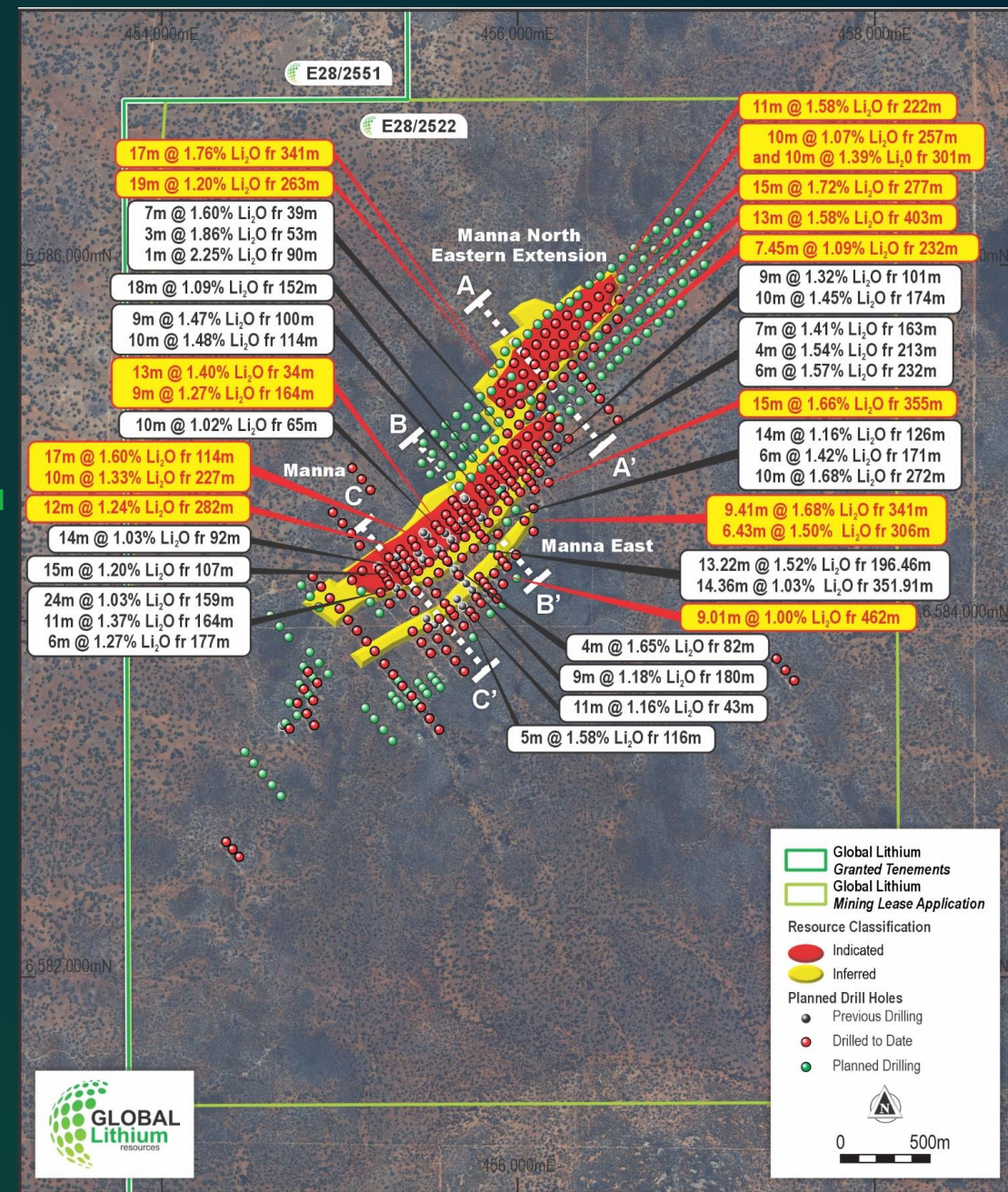
## Manna Lithium Project

# Mineral Resource Estimate Grows

## Pathway to a Larger Resource at Manna

- Manna is a developing **world class** Lithium asset
- Mineral Resource Estimate (MRE) increases to **36.0Mt @ 1.13%**<sup>1</sup>
- **24.1%** increase in total contained Li<sub>2</sub>O to 406,000 tonnes Li<sub>2</sub>O
- **13%** increase in Mineral Resource grade to 1.13%
- **10%** increase in Mineral Resource tonnes to 36.0Mt
- CY23 Exploration: **+50,000m** RC and Diamond drilling program planned to further increase the resource
  - Up to **6 drill rigs** to be deployed
  - Future upgrades to MRE expected H1 CY2024
  - Manna demonstrates significant scope for further growth

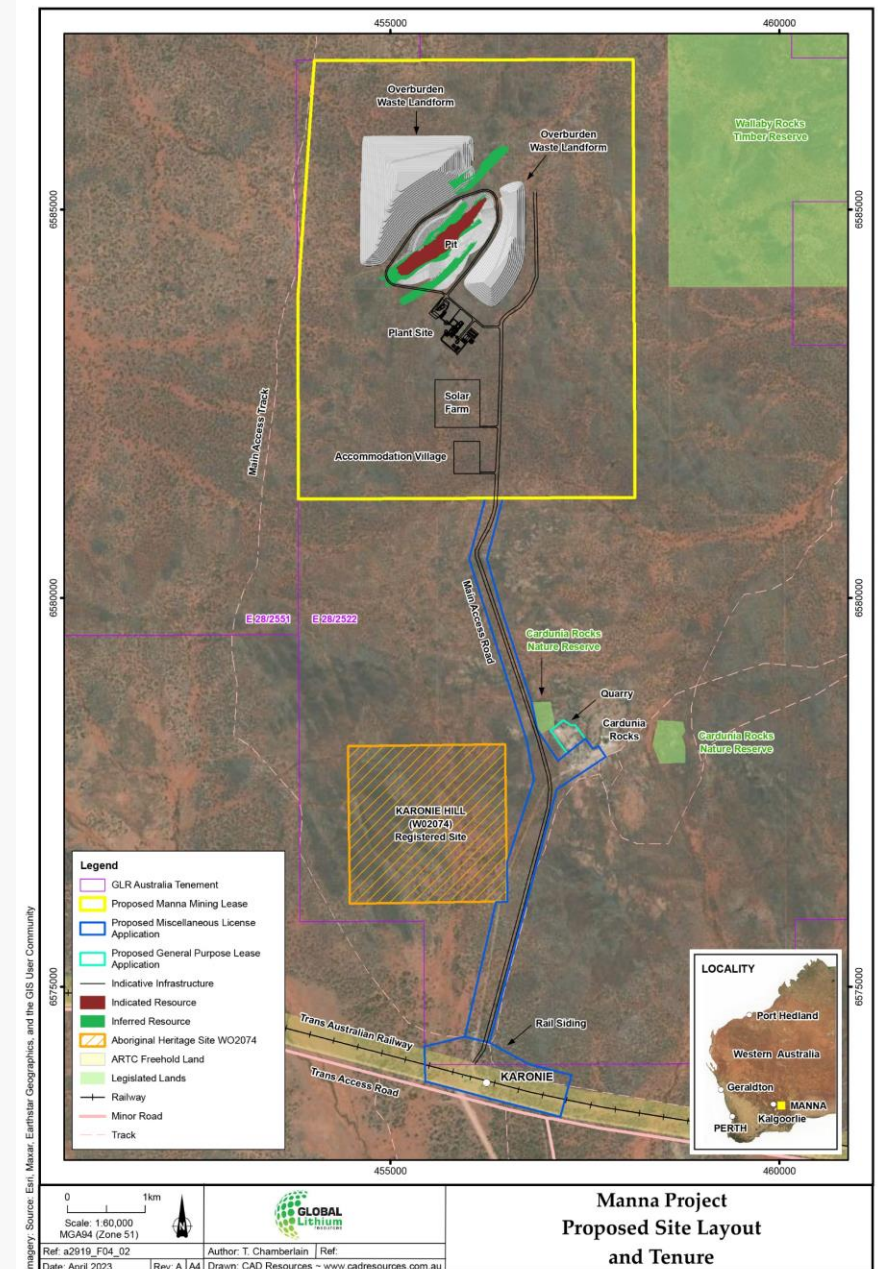
1. Refer ASX release titled "MANNA LITHIUM RESOURCE GROWS", 26 July 20223



## Manna Lithium Project

# Mining Lease Application

- Mining Lease application (MLA 28/414) lodged with Department of Mines, Industry Regulation and Safety (DMIRS)
- 13km North of Trans Australian Railway
- Area of Mining Lease covers 2,406 hectares which includes:
  - Manna deposit and potential resource extensions along strike
  - Process plant
  - Waste rock landforms
  - Other mine operation infrastructure
  - Ancillary services
- Mineralisation Report and Supporting statement peer reviewed



Manna mining lease map<sup>1</sup>

1. Refer ASX release titled "MINING LEASE APPLICATION LODGED FOR MANNA LITHIUM PROJECT", 26 April 2023.

## Manna Lithium Project

# Land Access Agreement & Heritage Surveys Completed

- Land Access Agreement for Exploration and Prospecting executed with Kakarra Part B<sup>1</sup>
- Heritage surveys across the entire mining lease area completed
- Native Title Mining Agreement to support Final Investment Decision and project development under formal negotiation



Global Lithium and Kakarra Part B Traditional Owners following signing of the Land Access Agreement – June 2023



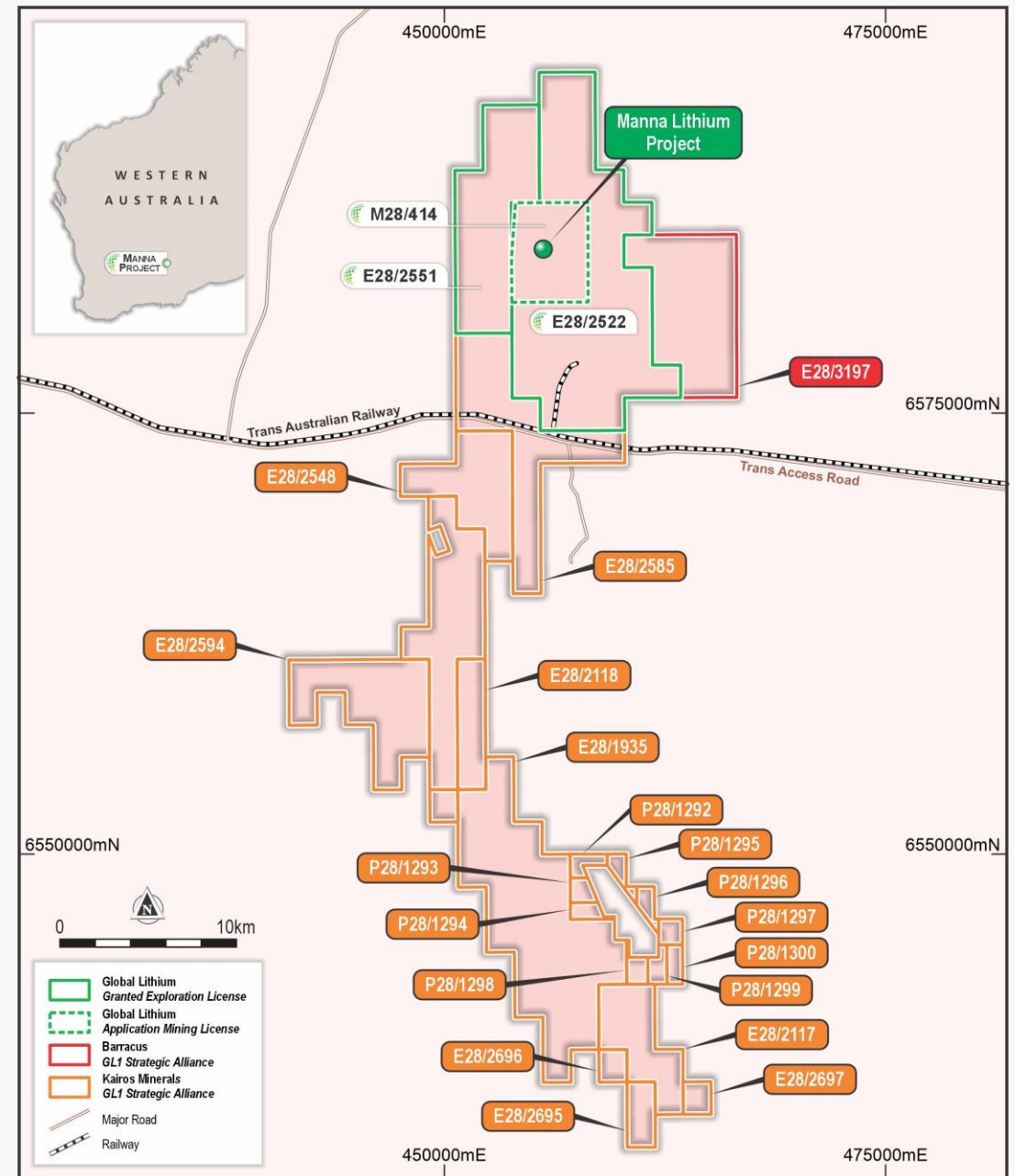
Heritage Survey Group Photo – August 2023

## Regional Expansion

# Strategic Investment

### Global Lithium announces multiple acquisitions to significantly expand its regional footprint

- Up to A\$4.6 million strategic investment and collaboration agreement secured with **Kairos Minerals Limited (ASX: KAI)** over the Roe Hills Lithium Project
- Roe Hills is immediately adjacent to GL1's Manna Lithium Project area
- Infrastructure, water and heritage survey collaboration has been agreed between the parties
- Right of first refusal on any non-precious mineral discovery
- Option agreement executed with private exploration company **Baracus Pty Ltd** over E28/3197 to the east of GL1 tenements



1. Refer ASX release titled "MANNA LITHIUM PROJECT EXPANSION OF REGIONAL INTERESTS", 26 JUNE 2023.

# **Project Development | Near Term Cash Flow | Technical De-risking**

## Manna Lithium Project

# Near Term Cash Flow Opportunity – DSO Project

- GL1 China trip in May
  - Visited major spodumene beneficiation and lithium chemical plants
  - Strong interest in Direct Shipping Ore (DSO)
- DSO Pre-Feasibility Study and other workstreams underway:
  - 500,000tpa of DSO for up to 24 months
  - DSO Customer Commercial Partnering
  - DSO Package Award & Equipment Lead
  - Mining License Application (submitted)
  - Mining Permit Application
  - Mining Pre Strip & First DSO Production
- Financial evaluation is required before a commitment is made on the DSO project



DSO Flotation Concentration Plant



Filter Presses



Lithium Chemical Plant



## Manna Lithium Project

# Definitive Feasibility Study (DFS)

- Experienced lithium engineering consultant Wave International commenced the DFS in Q1 CY23<sup>1</sup>
- Bulk metallurgical and ore variability test work underway
  - Initial results are encouraging with high lithia recoveries
- Feasibility Study results expected in Q1 CY2024
- Final Investment Decision (FID) in CY2024
- Various work programs to improve project economics
- Technical de-risking work streams underway
- Environmental and heritage/native title work activities underway

1. Refer ASX release titled "WAVE INTERNATIONAL APPOINTED LEAD DFS ENGINEER", 28 March 2023.



GL1 Geology Team and MD inspecting the core at site

# Ore Sorting Trials Completed

## Trials deliver 90% increase in lithium grade<sup>1</sup>

- Excellent visual control between ore (white) and waste (black)  
Test run elevated head grade from 0.88% Li<sub>2</sub>O to 1.67% Li<sub>2</sub>O
- Iron reduction of 93% to 0.4% Fe
- Potential to expand total minable tonnes and improve head grade feed to plant
- Trials performed at Steinert test facility, Western Australia
- Ore sorting will provide the following benefits:
  - Greater mining flexibility
  - Reject waste entering the crushing circuit
  - Reduce iron contamination
  - Increase concentrate production for same size plant
- Further test work planned to refine and improve the process



Manna pegmatite core showing black waste rock (top) and commercial scale Steinert ore sorting machine (bottom)

1. Refer ASX release titled "MANNA ORE SORTING TRIAL DELIVERS 90% INCREASE IN LITHIUM GRADE", 30 May 2023.

# Another Critical Mineral Discovery

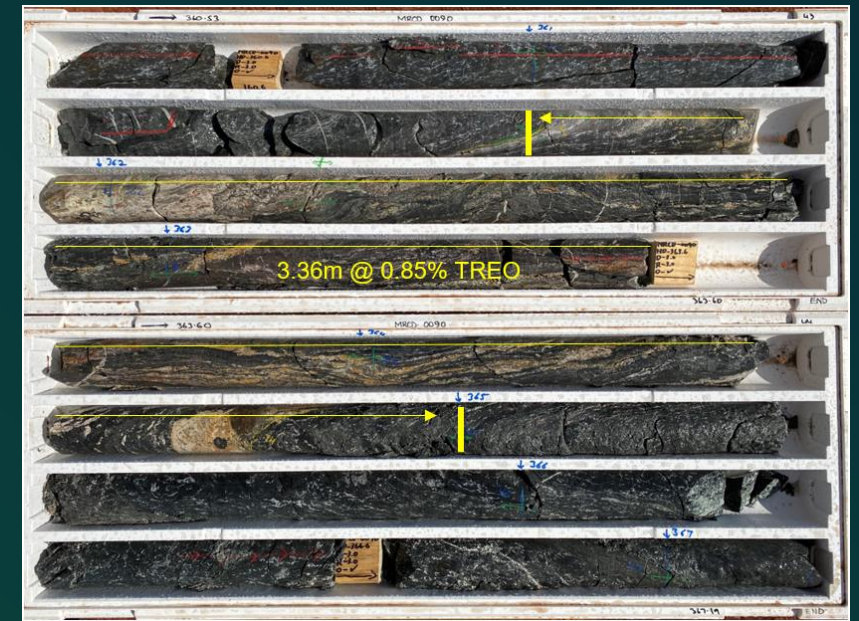
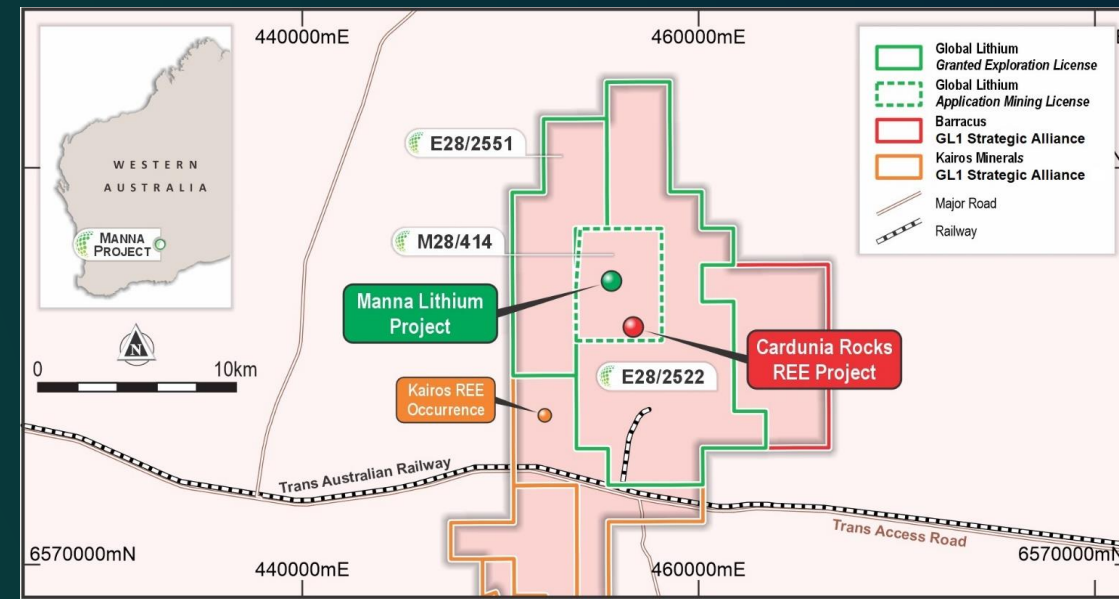
The background features a soft, glowing green and white color palette. It includes several semi-transparent, light green circles of varying sizes scattered across the upper left and center. In the lower right, there are dynamic, curved green lines that resemble light trails or energy flows, creating a sense of movement and technology. The overall aesthetic is clean, modern, and futuristic.

## Cardunia Rocks REE Project

# REE Discovery

### Discovery to be named Cardunia Rocks REE Project<sup>1</sup>

- Bedrock Rare Earth Elements (REE) hosting mineralised system discovered adjacent to Manna Project Area
- High-grade assay result of **24.17%** Total Rare Earth Element Oxide (TREO)
- Standout drilling results occur over a strike length of 2km
- Large scale soil sampling program returns peak surface assay results of **3,350ppm TREO**
- REE surface anomaly identified from soil and auger sampling spans over **8.5km length**
- Exploration program planning underway to target REE mineralisation



Sample MRCD0090 Core Tray showing biotite magnetite alteration

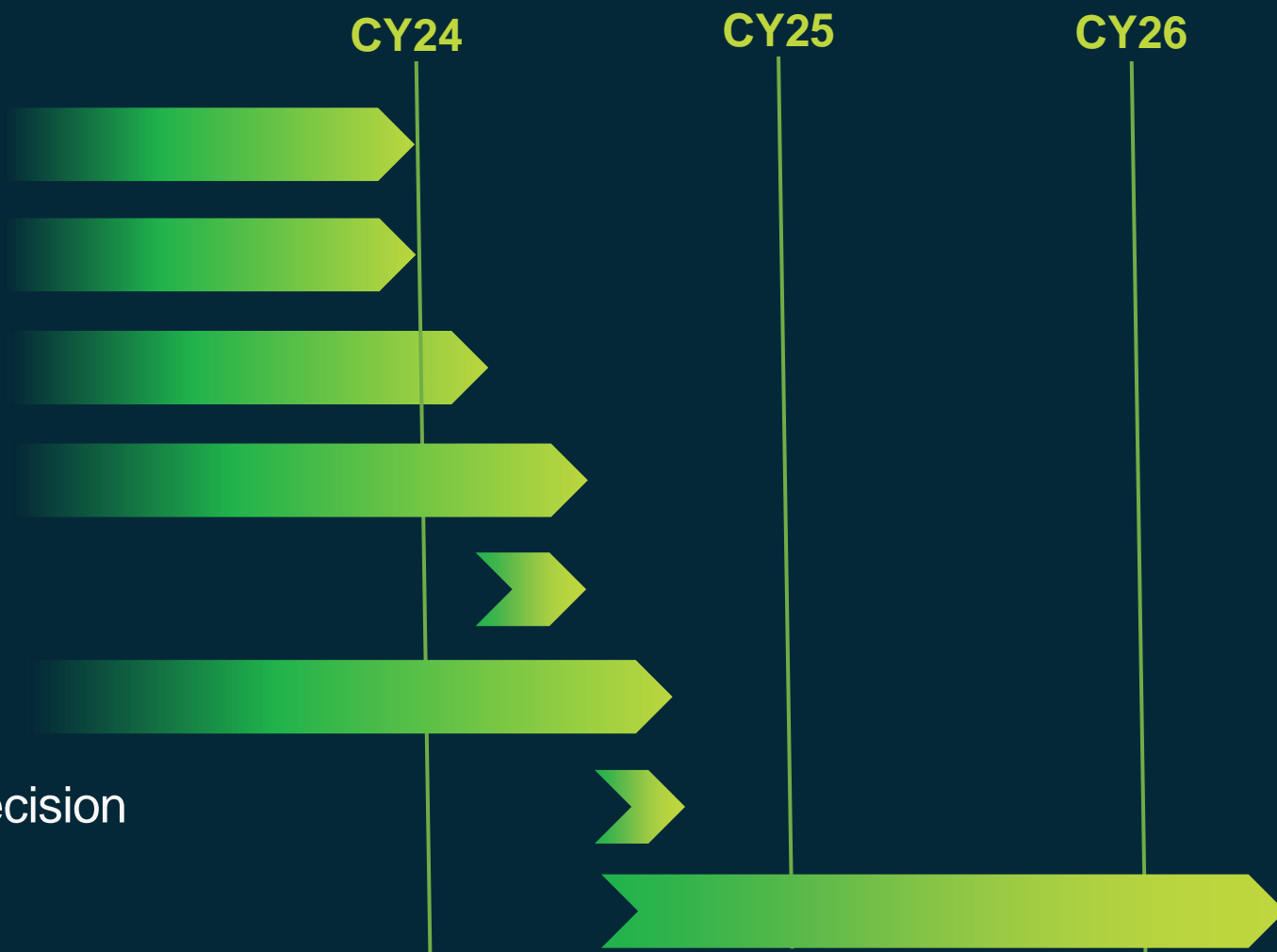
1. Refer ASX release titled "REE Discovery at Manna Project Area", 13 July 2023.

# Major Manna Milestones

# Key Milestones

## Global Lithium Resources

- Exploration
- Metallurgy, Ore Reserve & DSO PFS
- DFS for Spodumene Concentrate
- Customer Offtake & Funding Strategy
- Mineral Resource Upgrade
- Environmental / Native Title Approvals
- Spodumene Concentrate Final Investment Decision
- Construction, Commissioning & SOP



Note: The timetable and exploration program are indicative and subject to change.



100% Owned Project 2

# Marble Bar Lithium Project





## Marble Bar Lithium Project

# Highly Prospective Geological Setting

### Geology

- Spodumene bearing pegmatite hosted in greenstone and granite contact
- Demonstrates similar geological settings to the nearby Pilgangoora<sup>1</sup> and Wodgina<sup>2</sup> deposits

### Resource

- Inferred Mineral Resource of **18.0Mt @ 1.0% Li<sub>2</sub>O<sup>3</sup>**
- Lithium mineralisation in drilling identified over 15km

### Significant Upside

- **Highest grade lithium assays delivered to date<sup>4</sup>**
- 48,528m of RC drilling completed in CY2022
- More than **25km greenstone strike** in highly prospective area
- Highly prospective gold and base metal targets will be tested in 2023

### Infrastructure Rich

- Tier 1 lithium mining jurisdiction
- Sealed road through tenement area
- 150km south-east of Port Hedland

1. Owned by Pilbara Minerals (ASX: PLS).

2. Owned by the MARBL JV, 60% Albemarle, 40% Mineral Resources (ASX: MIN).

3. Refer ASX release titled "GL1 DELIVERS TRANSFORMATIVE LITHIUM RESOURCE BASE", 15 December 2022.

4. Refer ASX release titled "Highest Grade Lithium Assays Delivered to Date at Marble Bar Lithium Project", 2 May 2022

PORT HEDLAND

Port Hedland Salt (Salt)

Mallina Gold Project (Au)

Wodgina (Li)

Pilgangoora (Li)

Sulphur Springs (Zn-Cu-Pb)

Iron Bridge (Fe)

Mt Webber (Fe)

Sanjiv Ridge (Fe)

Moolyella (Sn)

Warrawoona (Au-Ag)

Marble Bar Lithium Project  
MARBLE BAR

Moolyella (Sn)

Warrawoona (Au-Ag)

Sanjiv Ridge (Fe)

WESTERN AUSTRALIA

Perth

## Marble Bar Lithium Project

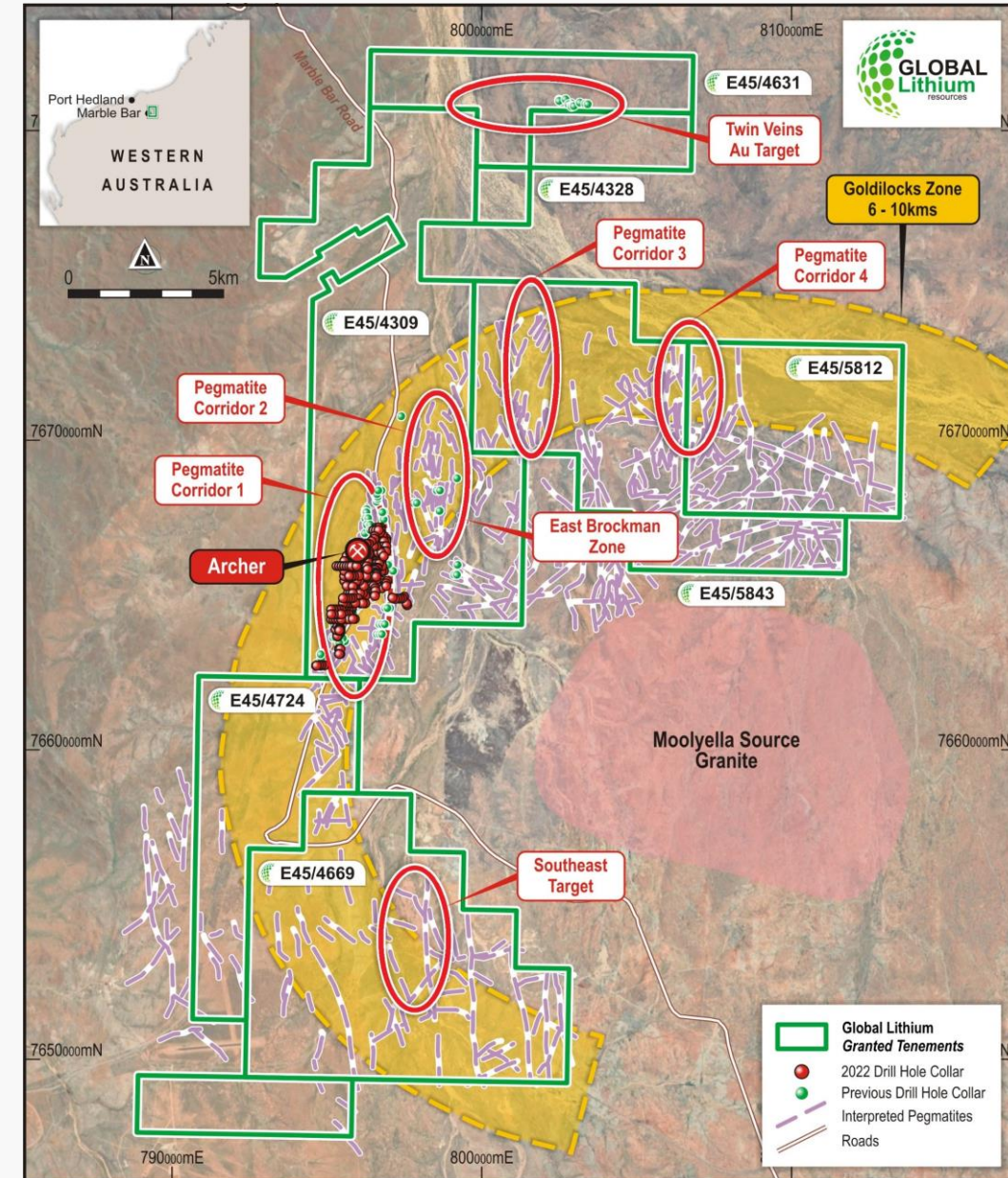
# Results Demonstrate Upside Potential

### Highest grade lithium assays delivered to date<sup>1</sup>

- A large intrusive related mineral system = significant upside
- 2023 exploration campaign targets lithium mineralised pegmatites to establish prospectivity both along strike and down dip
- Mapping and soils work has delineated four distinct target areas for further exploration – drilling recommences H1 CY2023
- Highly prospective gold and base metal targets will be tested in 2023

1. Refer ASX release titled "HIGHEST GRADE LITHIUM ASSAYS DELIVERED TO DATE AT MARBLE BAR LITHIUM PROJECT, 2 May 2022

2. Refer ASX release titled "NEW LITHIUM BEARING PEGMATITE AT MARBLE BAR LITHIUM PROJECT", 1 August 2022



Pegmatite Exploration Target Areas<sup>2</sup>

## Marble Bar Lithium Project

# Exploration Program CY2023

### Drilling underway to test and expand Archer deposit and other lithium corridors<sup>1</sup>

- Heritage surveys completed across Corridor 2 and Twin Veins targets
- Commenced RC drilling program (20,000m)
- IP Survey across Twin Veins to highlight potential chargeability anomalies
- RC program to test Corridor 2 Lithium targets<sup>and</sup> Gold and base metal anomalies at Twin Veins and any identified chargeability anomalies



1. Refer ASX release titled "DRILLING UNDERWAY AT MARBLE BAR LITHIUM PROJECT", 14 JUNE 2023.

# Global Lithium – Mineral Resources

Project Name	Category	Million Tonnes (Mt)	Li <sub>2</sub> O%	Ta <sub>2</sub> O <sub>5</sub> ppm
<b>Marble Bar</b>	Indicated	3.8	0.97	53
	Inferred	14.2	1.01	50
	<b>Subtotal</b>	<b>18.0</b>	<b>1.00</b>	<b>51</b>
<b>Manna</b>	Indicated	20.2	1.12	56
	Inferred	15.8	1.14	52
	<b>Subtotal</b>	<b>36.0</b>	<b>1.13</b>	<b>54</b>
<b>Combined Total</b>		<b>54</b>	<b>1.09</b>	<b>53</b>

1. Refer ASX release titled "Manna Lithium Project Resource Grows," 26 July 2023.

# GL1 Purpose & Values – It's who we are that matters

---

## OUR PURPOSE

Empowering people to power the planet

**People | Power | Planet**

---

## OUR VALUES

### SAFETY

The standard you walk past is the standard you accept.

### OWN IT

We do what we say we will do.

### SUSTAINABILITY

We do the right thing while providing responsible returns to people and the planet.

### INNOVATION

We empower people to innovate for the better.

### TEAMWORK

We all win when we work together with a can-do mindset.

# Contact Us

---

## **RON MITCHELL**

Managing Director

+61 8 6103 7488

info@globallithium.com.au

## **VICTORIA HUMPHRIES**

Media and Investor Relations

+61 (0) 431 151 676

victoria@nwrcommunications.com.au

**ASX: GL1**



**in** [au.linkedin.com/company/global-lithium-resources](https://au.linkedin.com/company/global-lithium-resources)

**🐦** [@Global\\_Lithium](https://twitter.com/Global_Lithium)

Subscribe to our mailing list at:  
[globallithium.com.au](https://globallithium.com.au)