



JAMES BAY SUMMER EXPLORATION TO COMMENCE

ASX RELEASE: 7 AUGUST 2023

- Wildfire restrictions have been lifted and exploration is scheduled to commence on 10th August 2023
- Explo-Logik, a Quebec based company is currently preparing the on-ground program
- High-priority targets up to 1,600m have been visually identified and a detailed sampling and mapping program will be undertaken to identify potential spodumene hosting pegmatites
- Soil and rock-chip samples will be sent to ALS Laboratories in Val-d’Or, Quebec for analysis

Resource Base Ltd (ASX: RBX) (**Resource Base** or **the Company**) is pleased to provide shareholders with an exploration start date on its Wali and Ernst Lake projects within James Bay, Quebec, of 10th August 2023.

The Company has identified numerous geological features (dykes and faults), magnetic structures and now visual pegmatite targets (See ASX Announcement dated 1 August 2023 “Multiple Outcropping Pegmatites Identified at Wali Project”) which is the immediate focus for the on-ground fieldwork. Explo-Logik in consultation with our in-country team will be targeting over 20 walk-up locations with samples to be sent directly to ALS in Val-d’Or, Quebec for analysis.

Executive Director, Brent Palmer, commented: “We are pleased to advise that the Company can commence the summer exploration program. The in-country team, accommodation and helicopter are engaged, and we are eager to test the visual targets along the 1,600m of strike.”

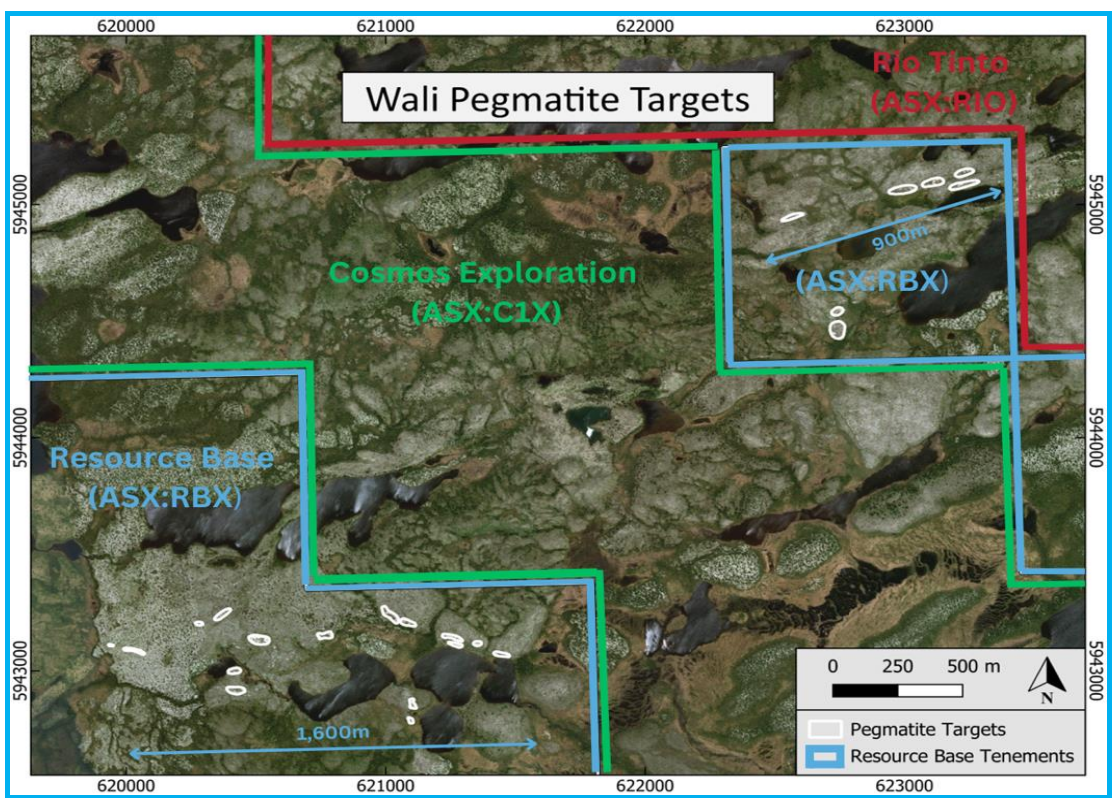


Figure 1: Visible pegmatites (circled in white), in relation to Rio Tinto (red) and Cosmos (blue) tenements

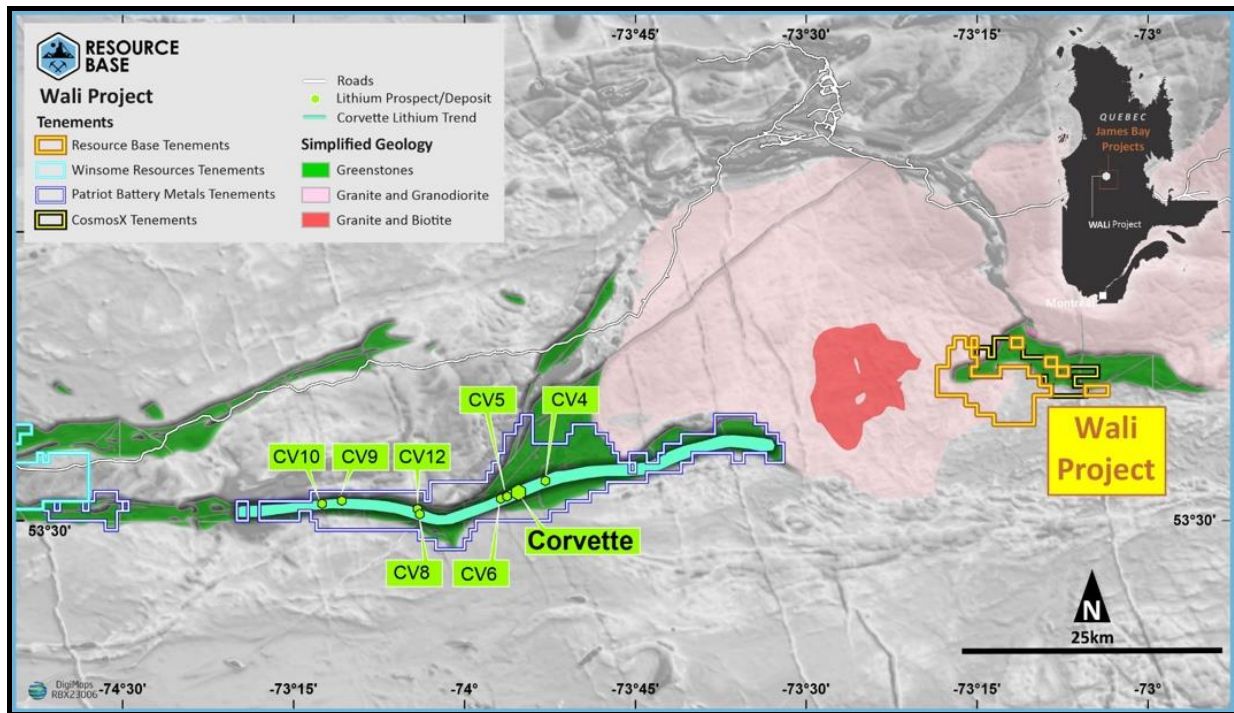


Figure 2: Wali Project location, James Bay region, Quebec

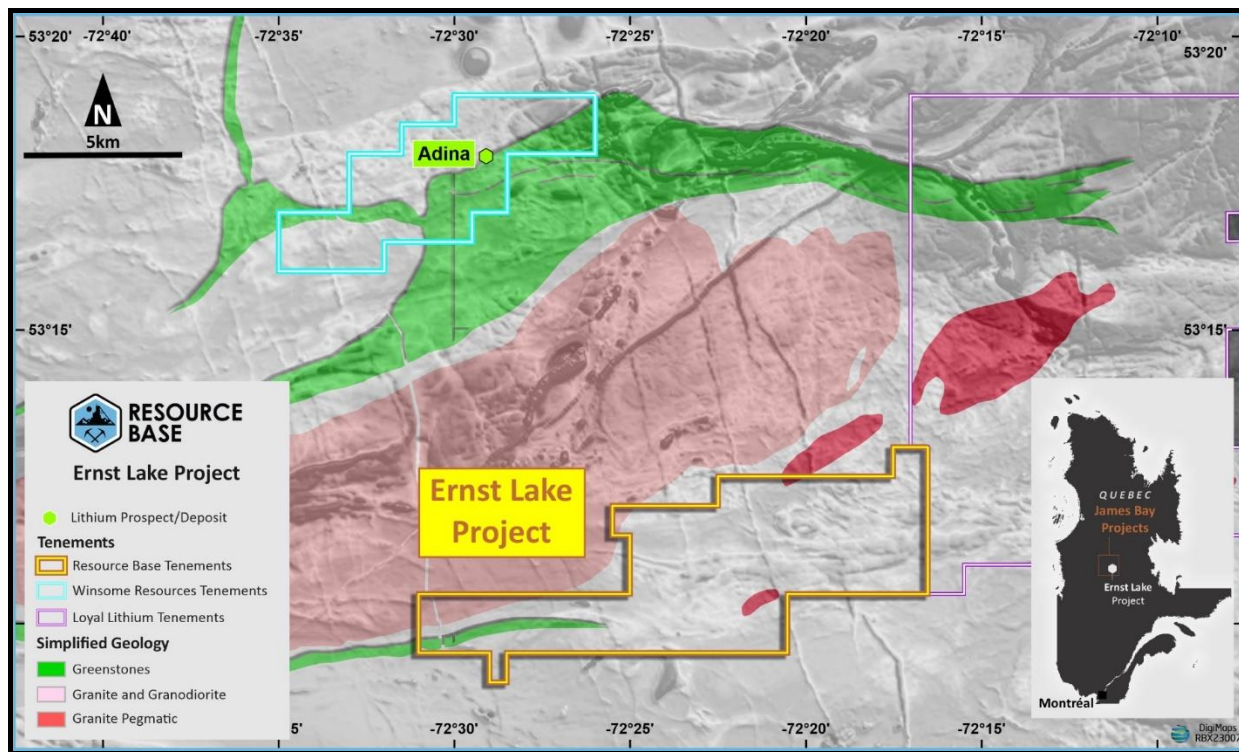
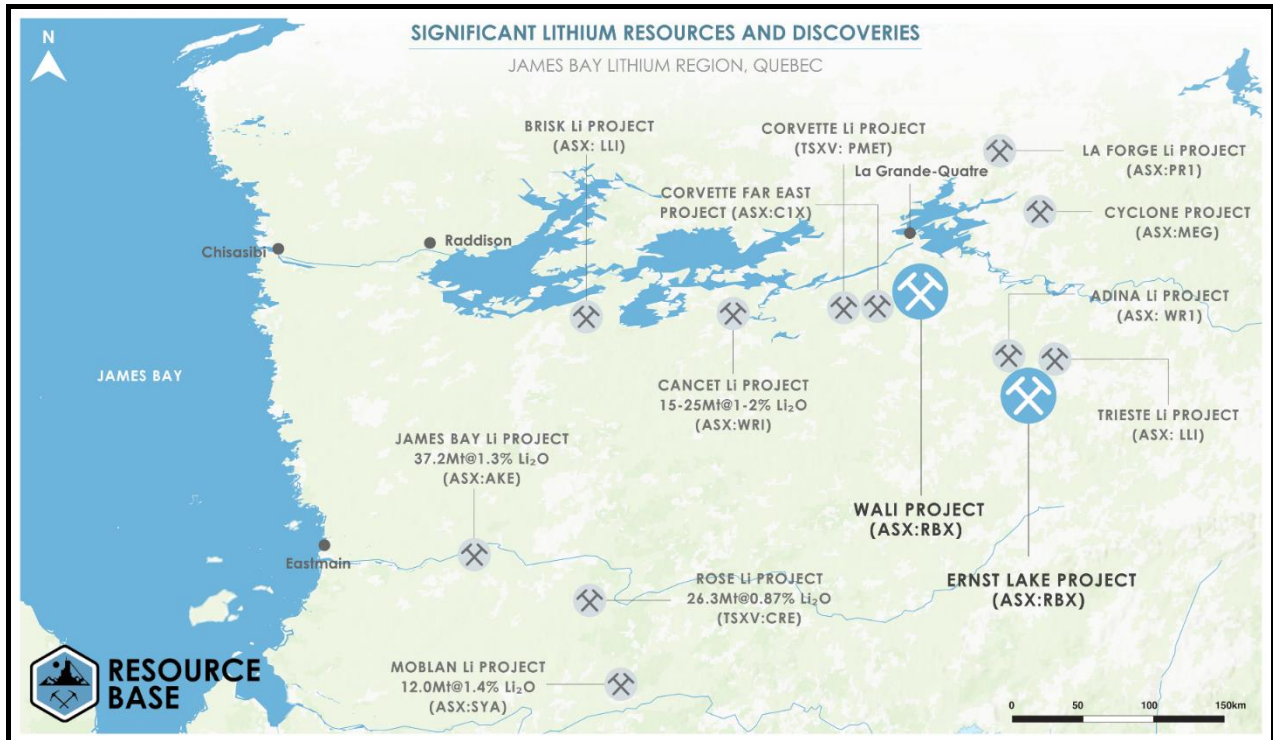


Figure 3: Ernst Lake Project location, James Bay region, Quebec



About Resource Base Ltd

Resource Base Limited (ASX: RBX) has 100% ownership of two lithium exploration projects, Wali and Ernst Lake, both in the highly prospective James Bay lithium province, host to several major players and significant recent discoveries.



In addition, Resource Base owns Mitre Hill, a clay-hosted REE project in Victoria and South Australia, with a maiden JORC Inferred Mineral Resource estimate of 21 Mt @ 767 ppm TREO; as well as the Black Range Project, Victoria, targeting volcanic massive sulphide, epithermal and porphyry copper, gold & zinc mineralisation.

- ENDS -

This announcement has been authorised by the Board of Resource Base Limited.

For further information please visit our website – www.resourcebase.com.au



Follow @ResourceBaseLtd



Follow Resource Base Ltd (ASX:RBX)