



Exploring High Quality Australian Lithium Projects

Investor Presentation | August 2023

ASX:CHR

Disclaimer

This presentation has been prepared by Charger Metals NL (Charger or the Company). It contains general information about the Company's activities current as at the date of the presentation. The information is provided in summary form and does not purport to be complete. This presentation is not to be distributed (nor taken to have been distributed) to any persons in any jurisdictions to whom an offer or solicitation to buy shares in the Company would be unlawful. Any recipient of the presentation warrants to the Company that the receipt of the presentation is not unlawful. It should not be considered as an offer or invitation to subscribe for or purchase any securities in the Company or as an inducement to make an offer or invitation with respect to those securities. No agreement to subscribe for securities in the Company will be entered into on the basis of this presentation or any information, opinions or conclusions expressed in the course of this presentation.

This presentation is not a prospectus, product disclosure document or other offering document under Australian law or under any other law. It has been prepared for information purposes only. This presentation contains general summary information and does not take into account the investment objectives, financial situation and particular needs of any individual investor. It is not financial product advice and investors should undertake their own due diligence and obtain their own independent advice from qualified professional advisors having regard to their objectives, financial situation and needs. Neither Charger nor any of its related bodies corporate is licensed to provide financial product advice.

Forward-Looking Statements

This presentation and information, opinions or conclusions expressed in the course of this presentation contains forecasts, projections and opinions which constitute forward looking statements. Forward looking statements include, but are not limited to, statements concerning the Company's exploration programme, outlook and target sizes. They include statements qualified by words such as "potential", "target", "scheduled", "planned", "estimate", "possible", "future", "prospective" and similar expressions. Such forward looking statements are not a guarantee of future performance, and are subject to numerous risks, uncertainties and other factors, including unknown ones. Actual results and developments will almost certainly differ materially from those expressed or implied. There are a number of risks, both specific to Charger and of a general nature which may affect the future operating and financial performance of Charger and the value of an investment in Charger including but not limited to title risk, renewal risk, economic and general market conditions, stock market fluctuations, price movements, regulatory risks, operational risks, reliance on key personnel, uncertainties relating to interpretation of exploration results, geology and resource estimations, native title risks, foreign currency fluctuations, uncertainties relating to the availability of/access to additional capital, infrastructure or environmental approvals, and mining development, construction and commissioning risk. Charger expressly disclaims any intention or obligation to update or revise any forward-looking statements whether as a result of new information, future events, or otherwise.

To the maximum extent permitted by law, no representation, warranty or undertaking, express or implied, is made and no responsibility or liability is accepted, by the Company or any of its officers, employees, agents or consultants or any other person, as to the adequacy, accuracy, completeness or reasonableness of the information in this presentation. An investment in the shares of the Company is to be considered highly speculative.

The exploration targets or conceptual exploration targets in this presentation or expressed during the course of this presentation are subject to completion of the necessary feasibility studies, permitting and execution of all necessary infrastructure agreements. In relation to any statements pertaining to future exploration targets or conceptual exploration targets, the nature of the exploration target means that the potential quantity and grade is conceptual in nature. This presentation and information, opinions or conclusions expressed in the course of this presentation should be read in conjunction with Charger's other periodic and continuous disclosure announcements lodged with the ASX, which will be available on the Charger website.

Competent Persons Statement

The information in this announcement that relates to exploration strategy and results is based on information provided to or compiled by David Crook BSc GAICD who is a Member of The Australian Institute of Mining and Metallurgy and the Australian Institute of Geoscientists. Mr Crook is a Non-Executive Director of Charger Metals NL. Mr Crook has sufficient experience which is relevant to the style of mineralisation and exploration processes as reported herein to qualify as a Competent Person as defined in the 2012 Edition of the 'Australasian Code for Reporting of Exploration Results, Mineral Resources and Ore Reserves'. Mr Crook consents to the disclosure of this information in this report in the form and context in which it appears.



ASX Listing Rule Information

The Company confirms that it is not aware of any new information or data that materially affects the information included in the original market announcements and, in the case of estimates of Mineral Resources, that all material assumptions and technical parameters underpinning the estimates in the original market announcements continue to apply and have not materially changed. The Company confirms that the form and context in which the competent persons findings have not been materially modified from the original announcements:

27 Jul 23	NEW SPODUMENE PEGMATITE INTERSECTIONS AT BYNOE
11 Jul 23	ASSAYS UP TO 1.9% LI ₂ O CONFIRM SPODUMENE DISCOVERY AT BYNOE
3 Jul 23	SPODUMENE PEGMATITES INTERSECTED AT BYNOE LITHIUM PROJECT
8 Jun 23	DRILLING UPDATE FOR THE BYNOE LITHIUM PROJECT
18 May 23	DRILLING UNDERWAY AT BYNOE LITHIUM PROJECT
1 May 23	CONTRACT AWARDED FOR UPCOMING DRILL PROGRAMME AT BYNOE
18 Apr 23	LAKE JOHNSTON PROJECT UPDATE
3 Apr 23	HIGH-GRADE LITHIUM DRILL RESULTS AT LAKE JOHNSTON – AMENDED
27 Mar 23	STRATEGIC BOARD RESTRUCTURE
14 Mar 23	CHARGER COMPLETES MAIDEN DRILLING PROGRAMME AT MEDCALF
22 Feb 23	CHARGER CONFIRMS HIGH GRADE LITHIUM AT MEDCALF
7 Feb 23	CHARGER TO TAKE 100% OWNERSHIP OF LAKE JOHNSTON - AMENDED
6 Feb 23	DRILLING UPDATE FOR CHARGERS MEDCALF SPODUMENE DISCOVERY
20 Dec 22	MEDCALF DRILLING REVEALS SPODUMENE-BEARING PEGMATITE SWARM
2 Dec 22	CHARGER COMMENCES DRILLING AT MEDCALF SPODUMENE PROSPECT
21 Nov 22	DRILLING APPROVAL & INCREASED LAND POSITION AT LAKE JOHNSTON
7 Nov 22	CHARGERS DRILLING APPROVED FOR THE BYNOE LITHIUM PROJECT
5 Sep 22	DRILLING UPDATE FOR COATES NICKEL-COPPER-PGE PROJECT
25 Jul 22	CHARGER COMMENCES DRILLING AT COATES NI-CU-CO-AU-PGE PROJECT
9 Jun 22	CHARGER CONFIRMS LARGE LITHIUM SYSTEM AT LAKE JOHNSTON
7 Apr 22	CHARGER CONFIRMS MASSIVE SULPHIDE TARGETS AT COATES PROJECT
17 Jan 22	CHARGER'S TARGETING SUGGESTS LARGE LITHIUM SYSTEM AT BYNOE

Australian Lithium Explorer Leveraged For Success

Focussed on two highly prospective lithium projects where proven systematic lithium exploration has generated several high priority drill-ready targets:

LAKE JOHNSTON LITHIUM PROJECT (WA)

Maiden drill programme recently completed at Medcalf Prospect successfully intersected high-grade lithium within a swarm of spodumene-bearing pegmatites that remain open at depth

Planning and preparations underway for follow-up drill programme to test for extensions to the high-grade Li mineralisation

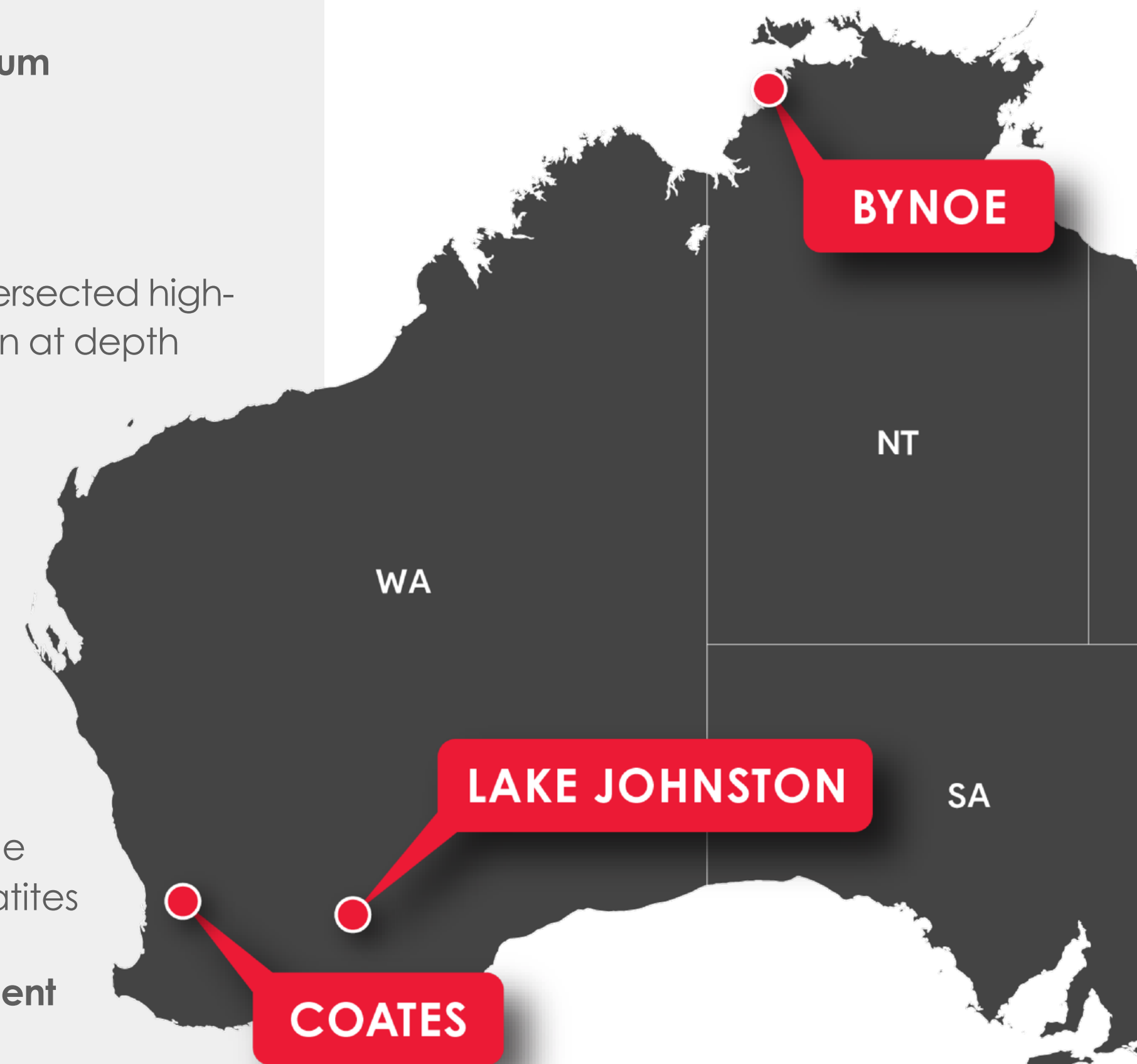
BYNOE LITHIUM PROJECT (NT)

Directly along strike from Core Lithium's Finnis Lithium Project

Fully permitted for large-scale drill programme

Aggressive RC and diamond drill programmes currently underway testing multiple high-priority target areas – successfully delineating spodumene-bearing pegmatites

✓ Well funded ✓ tight capital structure ✓ highly experienced senior management



Corporate Overview



62.1M

Shares on Issue

7.2M

Options¹

5.2M

Performance Rights

\$0.27

Share Price²

\$16.8M

Market Capitalisation²

\$4.3M

Cash³

1. Options(\$0.30, \$0.60 & \$0.90) 2. As at 4 August 2023 3. As at 30 June 2023

Highly Skilled Board & Senior Management

Aidan Platel
Managing Director

Adrian Griffin
Non-Executive Chairman

Terry Gardiner
Non-Executive Director

David Crook
Non-Executive Director

Jonathan Smalley
Exploration Manager

Jonathan Whyte
CFO & Co. Secretary

Strong Shareholder Register

15.5% Lithium Australia LTD
18.7% Institutions & Other Corporates
9.5% Directors/Management
48.6% Top 20 Shareholders

Share Price



Lithium Carbonate Price (CNY/t)



Charger's Value Proposition



Multi-asset Exploration Opportunity

Two highly prospective lithium projects with potential for both grade and scale:

- Lake Johnston Lithium Project surrounded by major Yilgarn lithium projects
- Bynoe Lithium Project in the heart of the sought-after Lichfield lithium belt

Tier 1 Lithium Jurisdictions

All projects located in the Tier 1 lithium jurisdictions of Western Australia and Northern Territory close to existing mines, infrastructure and ports

Aggressive Exploration Programmes

Maiden drill programme completed at the Medcalf Prospect at Lake Johnston; preparations already underway for follow-up programmes

Maiden drill programme at Bynoe underway with both RC and diamond drill rigs – over 8,000m completed to-date

Experienced & Skilled Leadership

Management team have been involved in successful exploration discoveries and mine developments

Management team have many years' specific experience in the lithium and battery metals space



Bynoe Lithium Project NT

70:30 JV with Lithium Australia Ltd (ASX:LIT)

Well established infrastructure in a Tier 1 jurisdiction

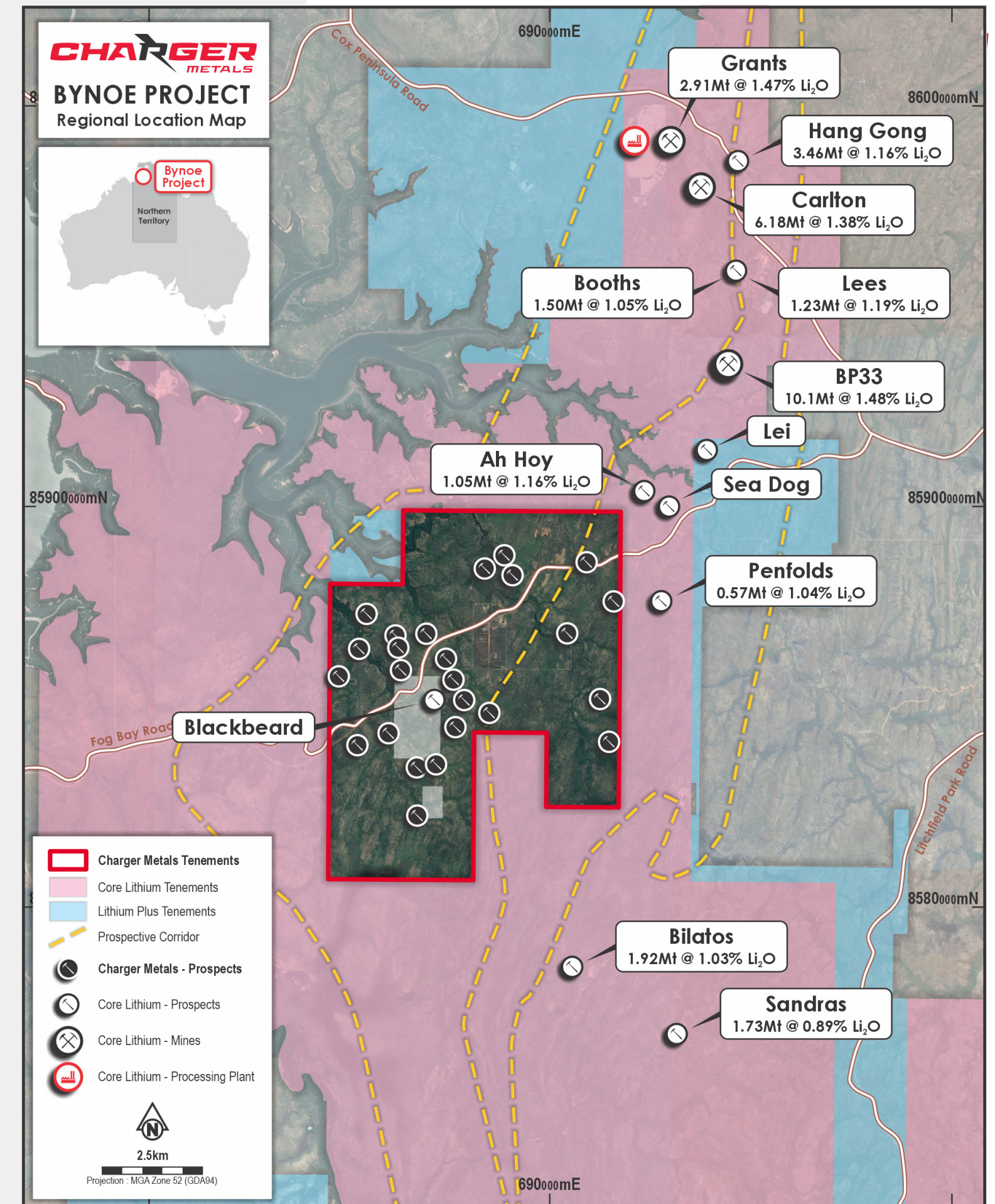
Covers approximately 63 km² in known lithium (spodumene) - enriched belt

Surrounded by Core Lithium Ltd's (ASX:CXO) Finniss Project:

- JORC Resource of 30.6Mt at 1.31% Li₂O¹
- Mining and beneficiation are underway
- High grade Li drill intersections close to Charger tenement boundary

Aeromagnetics and gravity indicate prospective corridor with regional NNE-SSW trend

¹ Refer to Core Lithium Ltd's ASX Announcement 18 April 2023 - Finniss Mineral Resource increased by 62%



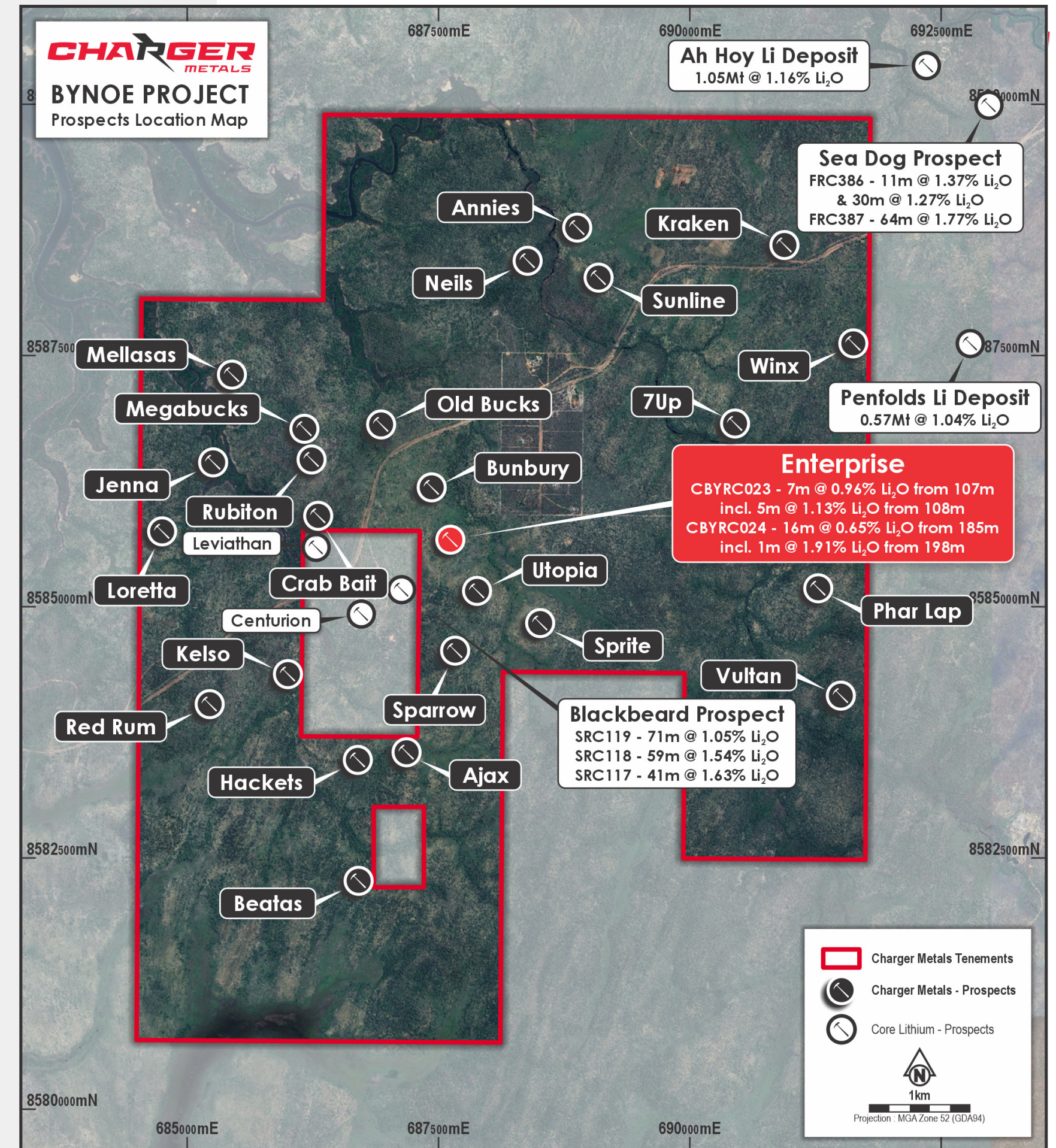
Systematically Drill-testing Priority Li Targets

Bynoe Lithium Project

Outcropping pegmatites, historical tin and tantalum workings, and soil geochemistry have generated over 20 priority Li targets to be systematically drill tested

- ✓ Mine management plan for drilling – APPROVED
- ✓ AAPA heritage approvals in place

RC & diamond drill programmes underway with >8,000m drilled to-date



Enterprise Prospect

Bynoe Lithium Project



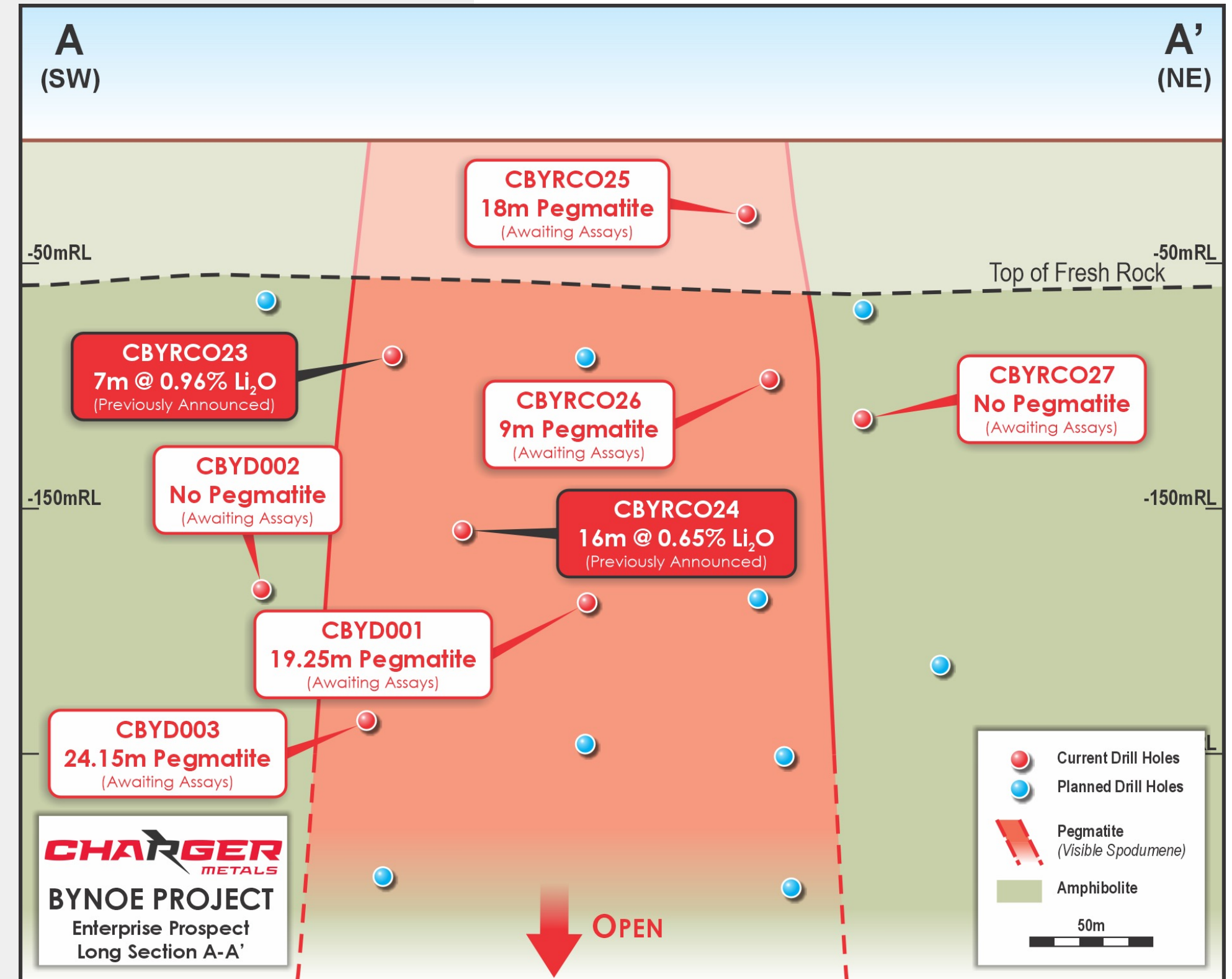
Enterprise defined by strong Li soil anomaly and coincident outcrop of weathered pegmatite

Located on same prospective trend as Core Lithium Ltd's (ASX:CXO) Blackbeard Prospect¹

Spodumene pegmatites up to 24m wide and up to 1.9% Li₂O over ~200m of strike intersected by RC & diamond drilling:

- **7m @ 0.96% Li₂O** from 107m, including
- **5m @ 1.13% Li₂O** from 108m (CBYRC023); and
- **16m @ 0.65% Li₂O** from 185m, including
- **1m @ 1.91% Li₂O** from 198m (CBYRC024).

Multiple assay results pending; drilling continuing to test down-plunge of known spodumene mineralisation



¹ Refer to Core Lithium Ltd's ASX Announcement 18 April 2023 - Finniss Mineral Resource increased by 62%

Current and Upcoming Work Programmes

Bynoe Lithium Project

Drilling

RC and diamond drilling continuing to define extents to known spodumene mineralization and to systematically test new priority targets for potential spodumene-bearing pegmatites

Soils and Mapping

Infill soil sampling and mapping of pegmatites and/or historical tin-tantalum workings underway over the NE area of the tenement

Geophysics

ANT survey planned to commence in the coming weeks – potential to find new “blind” pegmatites that don’t outcrop at surface

1 Refer to Core Lithium Ltd's ASX Announcement 18 April 2023 - Finniss Mineral Resource increased by 62%



Diamond drilling at Bynoe



Sparrow Prospect



7Up Prospect

Lake Johnston Lithium Project

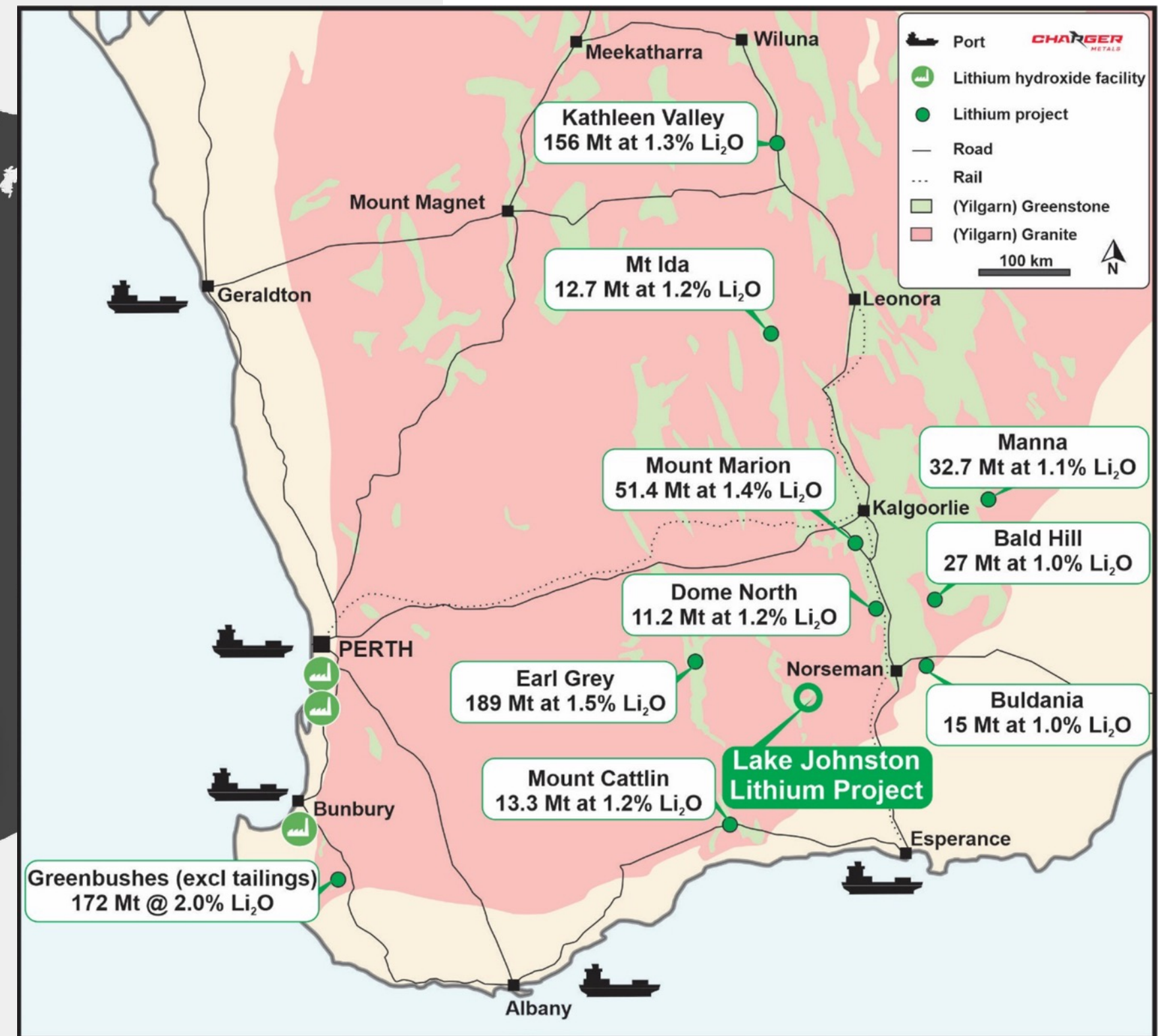


70:30 JV with Lithium Australia Ltd (ASX:LIT)

Access to port infrastructure by Kalgoorlie-Esperance road and rail corridor

Located in the heart of the “Yilgarn Lithium Province” which hosts the majority of Australian Li Mineral Resources

Lake Johnston is only ~70km to the east of Covalent Lithium’s Earl Grey Lithium Project, one of the largest lithium deposits in Australia



High-grade Lithium Potential

Lake Johnston Lithium Project

First-pass soils and exploration targeting confirmed multiple lithium systems at the Lake Johnston Project – potential for scale and grade

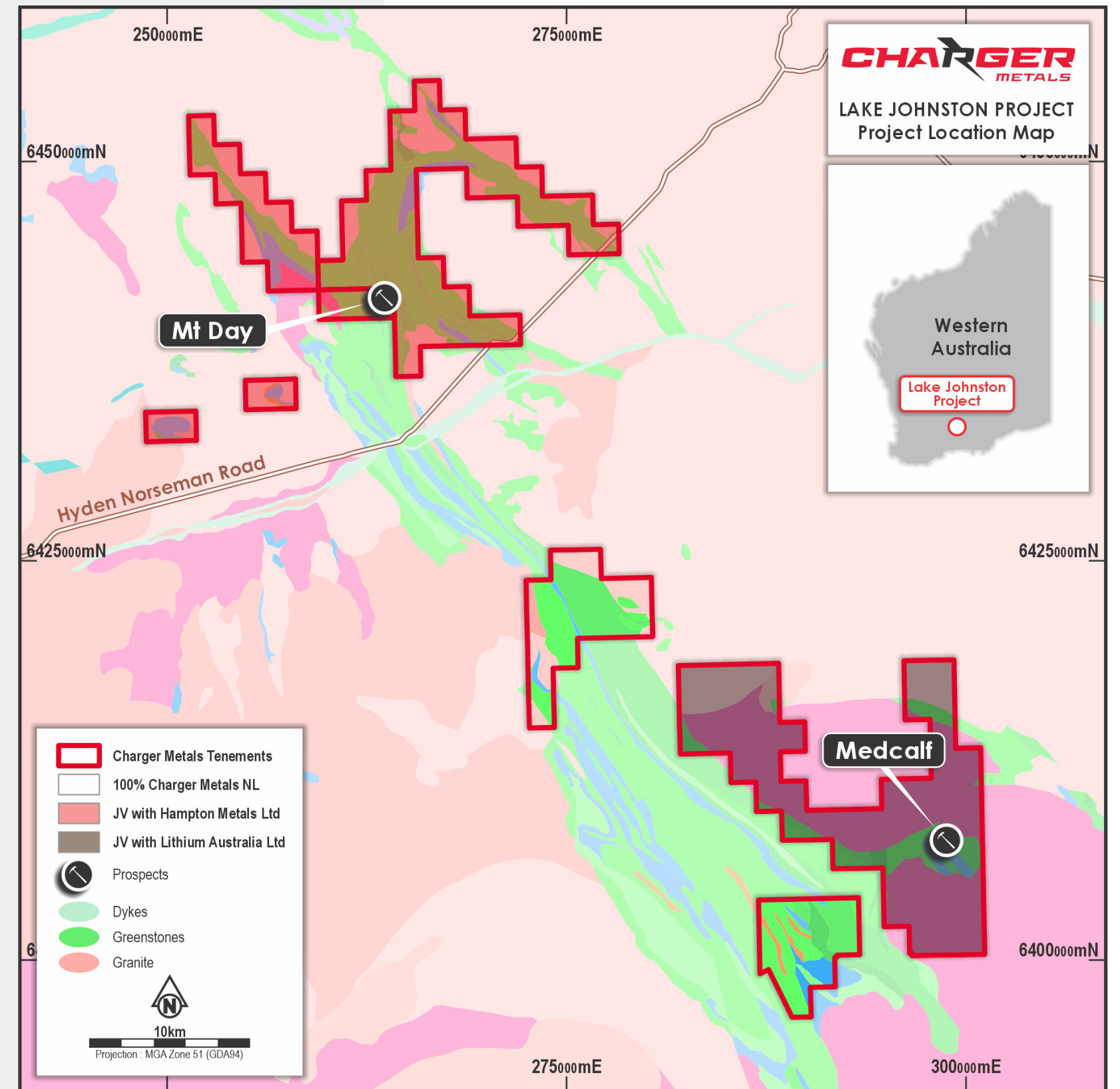
Several highly prospective target areas identified, including:

Medcalf Prospect

confirmed high-grade Li within spodumene-bearing pegmatite swarm

Mt Day Prospect

large LCT pegmatite field defined by strong Li soil anomaly coincident mapped pegmatite outcrops



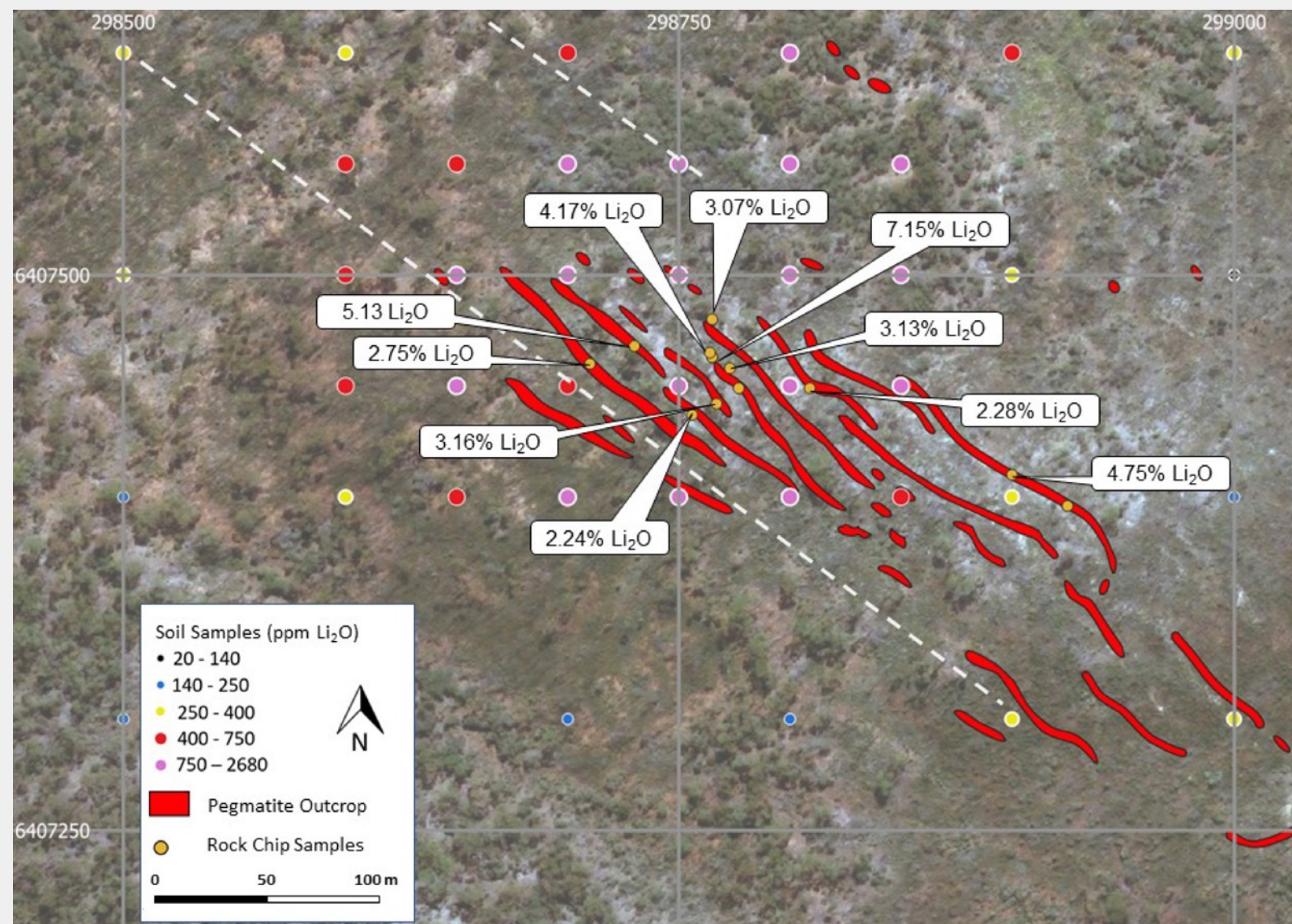
High-grade Lithium Potential

Lake Johnston Lithium Project

Medcalf Prospect:

Swarm of stacked spodumene-bearing pegmatites over 700m of strike within a 100m wide corridor

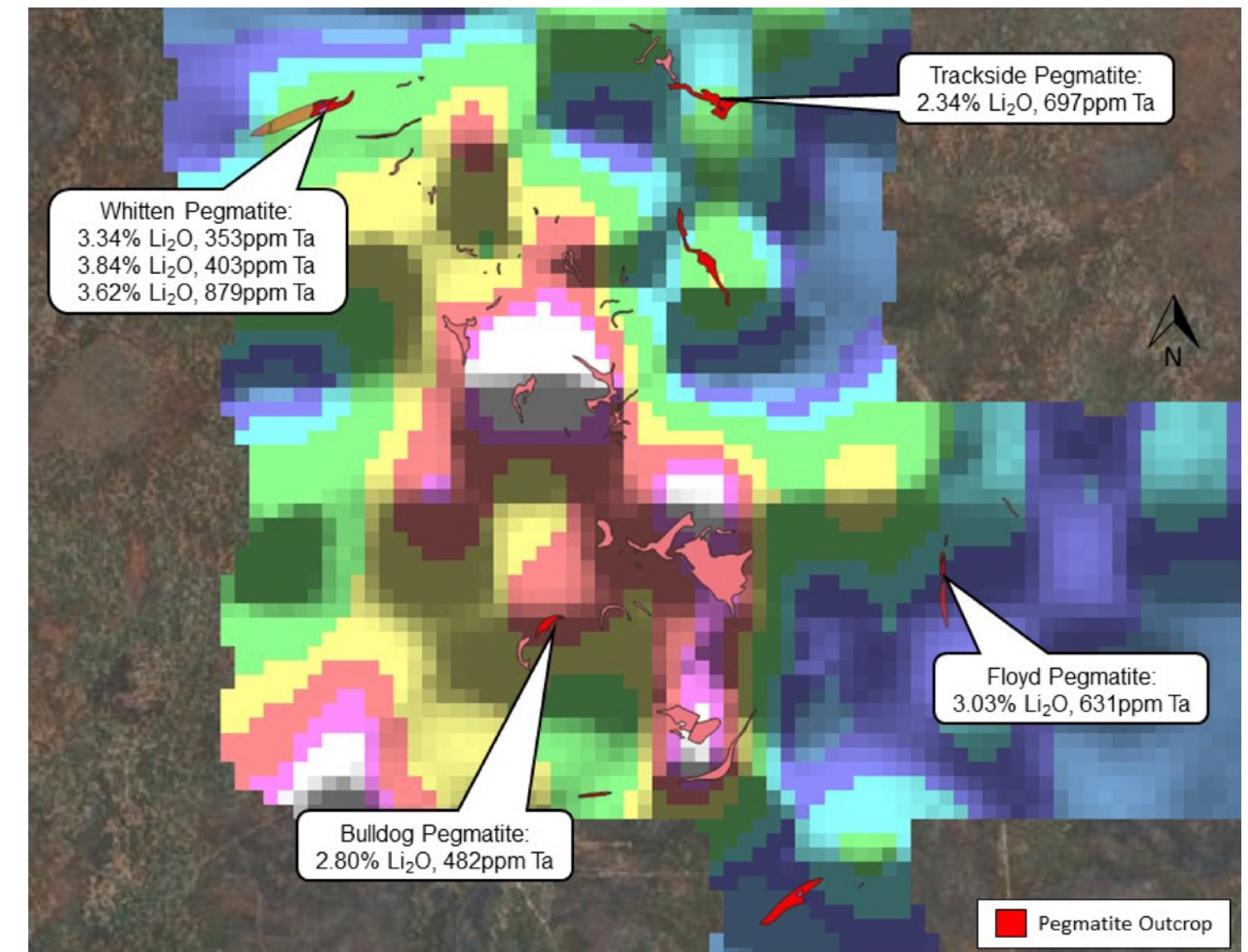
Strong Li soil anomaly and high-grade Li rock chips between 1.51 – 7.15% Li₂O



Mt Day Prospect:

Numerous mapped LCT pegmatites within 5.5km by 1.5km field

Strong Li soil anomaly and high-grade Li rock chips



Medcalf Prospect

Lake Johnston Lithium Project

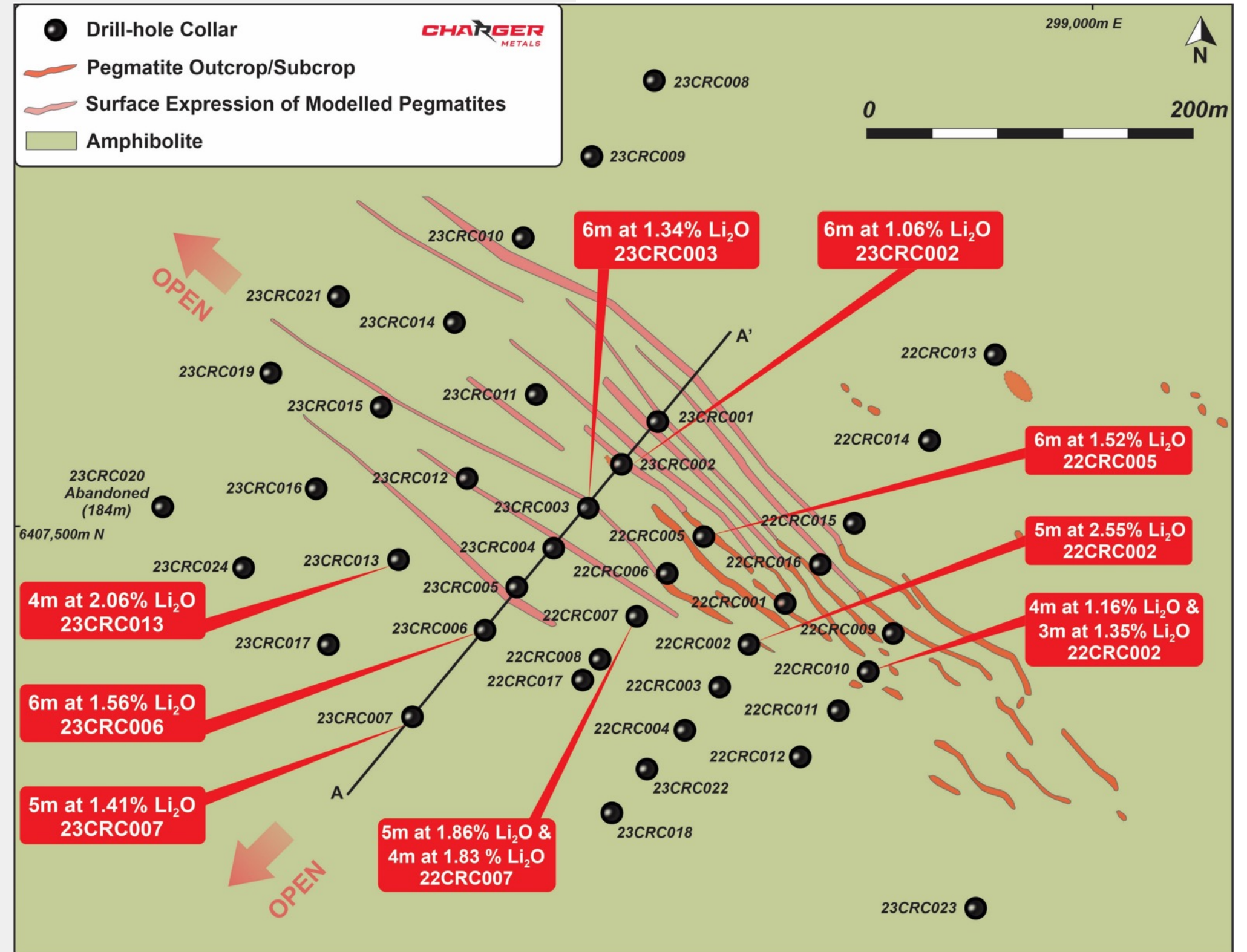


Maiden 41 hole RC drill programme completed

High-grade Li mineralisation intersected in stacked spodumene-bearing pegmatites over 700m of strike and 250m down-dip:

- 5m @ 2.55% Li₂O from 68m (22CRC002)
- 4m @ 2.06% Li₂O from 145m (23CRC013)
- 6m @ 1.56% Li₂O from 19m (23CRC006)
- 6m @ 1.52% Li₂O from 26m (22CRC005)
- 5m @ 1.86% Li₂O from 24m (22CRC007)

Preparations underway for follow-up extensional drill programme down dip and along strike to NW

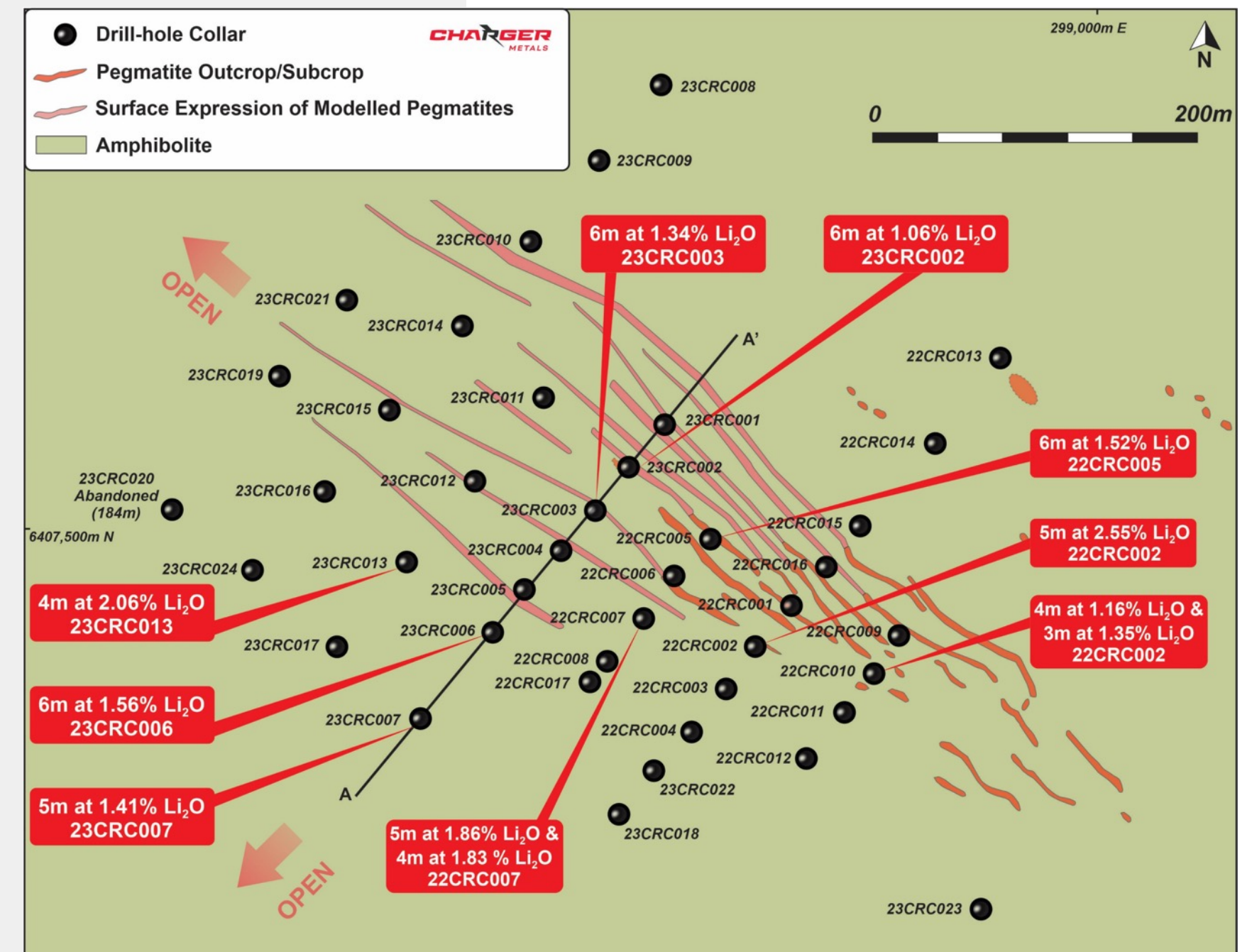
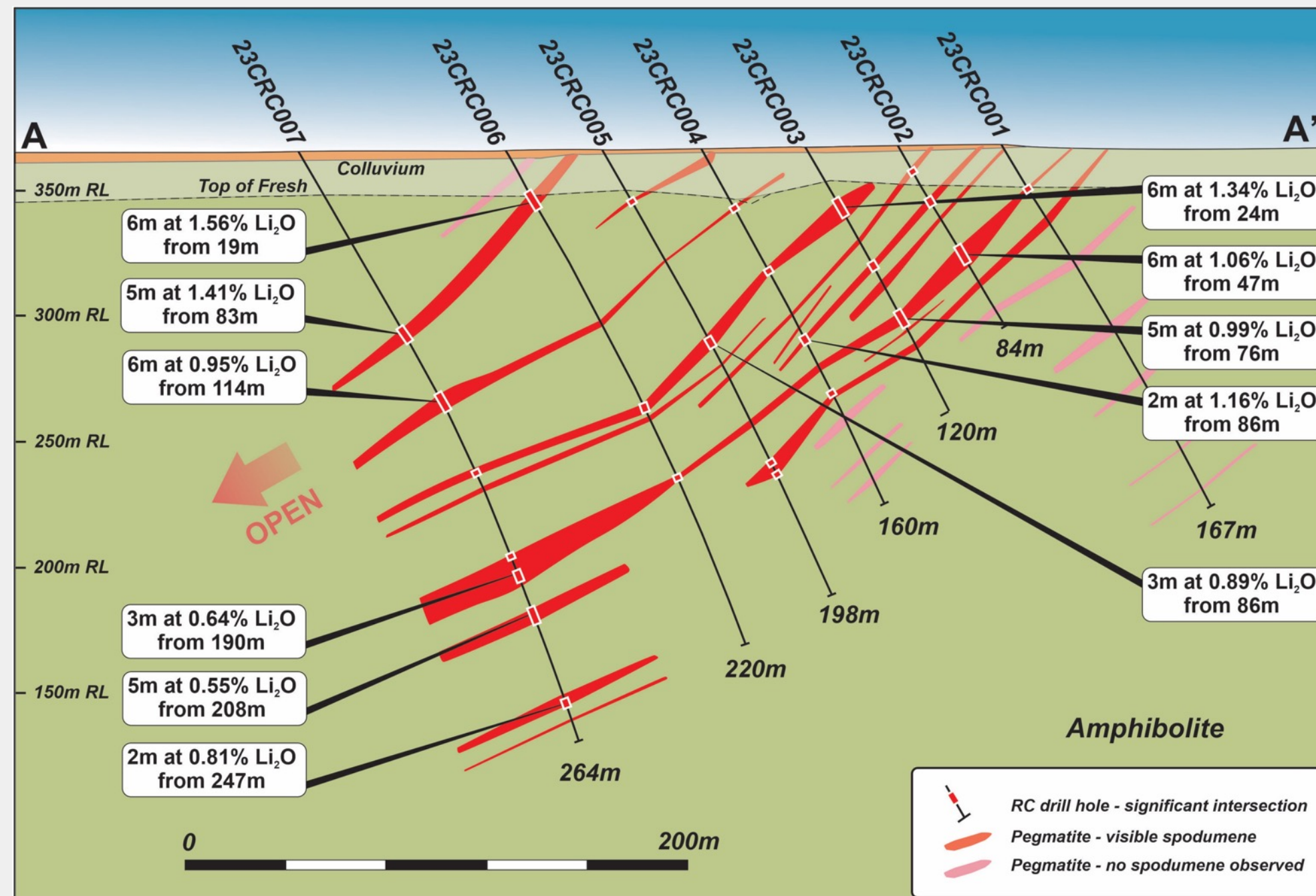


Medcalf Prospect

Lake Johnston Lithium Project



High-grade Li mineralisation within swarm of stacked spodumene-bearing pegmatites:
in cross section and plan view



Why Invest?

LITHIUM in strong demand in the rapidly expanding battery industry

Two highly prospective lithium projects in proven spodumene-rich provinces in Australia

Lake Johnston Lithium Project

maiden drilling confirmed high-grade Li in spodumene pegmatites, scale potential remains open

Bynoe Lithium Project

Maiden drilling confirmed high-grade Li in spodumene pegmatites, multiple highly prospective Li targets being systematically tested, directly along strike from producing Li mine with large beneficiation plant

Aggressive exploration campaigns underway – consistent upcoming news flow

Well funded, tight capital structure – fully leveraged to future exploration success



Cautionary Note

Throughout this document Charger refers to “spodumene” or “spodumene-pegmatite”. While the Company is very encouraged by its geological observations, no quantitative assessment of mineralisation is possible for those intersections that haven’t been assayed yet. Drilling widths reported are down-hole and no estimate of true width is given. Further, no forecast is made of whether this or further drilling will deliver ore grade intersections. The observed presence of spodumene within pegmatite does not necessarily equate to economic grades of lithium mineralisation until confirmed by chemical analysis which is currently underway. It is not possible to estimate the concentration of lithium in mineralisation by visual estimates and this will be determined by chemical analysis.





Contact Us

Mr Aidan Platel | Managing Director

E | aidan@chargermetals.com.au

T | +61 8 6146 5325

chargermetals.com.au

 @ChargerMetals

ASX:CHR