

10 August 2023

ASX: GAL

Corporate Directory

Directors

Chairman & MD

Brad Underwood

Non-Executive Director

Noel O'Brien

Non-Executive Director

Cecilia Camarri

Non-Executive Director

Mathew Whyte

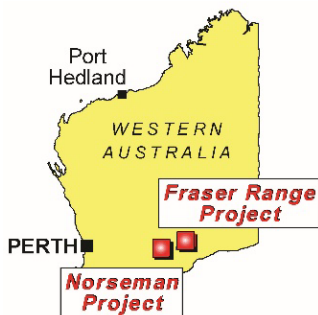
Projects

Fraser Range Project

Nickel-Copper-Cobalt

Norseman Project

Palladium-Nickel-Copper-Rhodium-Platinum-Gold



Contact Details

T: +61 8 9463 0063

E: info@galmining.com.au

W: www.galileomining.com.au

13 Colin St, West Perth, WA

NICKEL SULPHIDES IN NORSEMAN DRILLING

Highlights

- **First pass RC drilling at the Jimberlana South prospect intersects nickel and copper sulphides**
- **Shallow sulphide lenses starting at approximately 59 metres below surface with best result of;**
 - **1 metre @ 0.83% Ni, 0.36% Cu and 0.07% Co from 74m (NRC456) within broader interval of**
 - **7 metres @ 0.22% Ni, 0.13% Cu and 0.02% Co from 68m (NRC456)**
- **Nickel sulphides occur on the south side of the Jimberlana prospect and are open at depth and along strike**
- **Follow up RC drilling is scheduled to begin in late August including systematic exploration north of the Callisto discovery**

Galileo Mining Ltd (ASX: GAL, “Galileo” or the “Company”) is pleased to announce exploration results from RC drilling at the Jimberlana prospect within the Company’s 100% owned Norseman project in Western Australia.



Figure 1 – Disseminated and matrix sulphides in RC Drill chips (53m in NRC455)

Galileo's Managing Director Brad Underwood commented;

"Finding nickel sulphides in the first RC drill program at a new prospect is a very encouraging sign. This result illustrates the fundamental potential of our Norseman prospects, not only for nickel-palladium discoveries such as Callisto, but for high value nickel sulphide deposits.

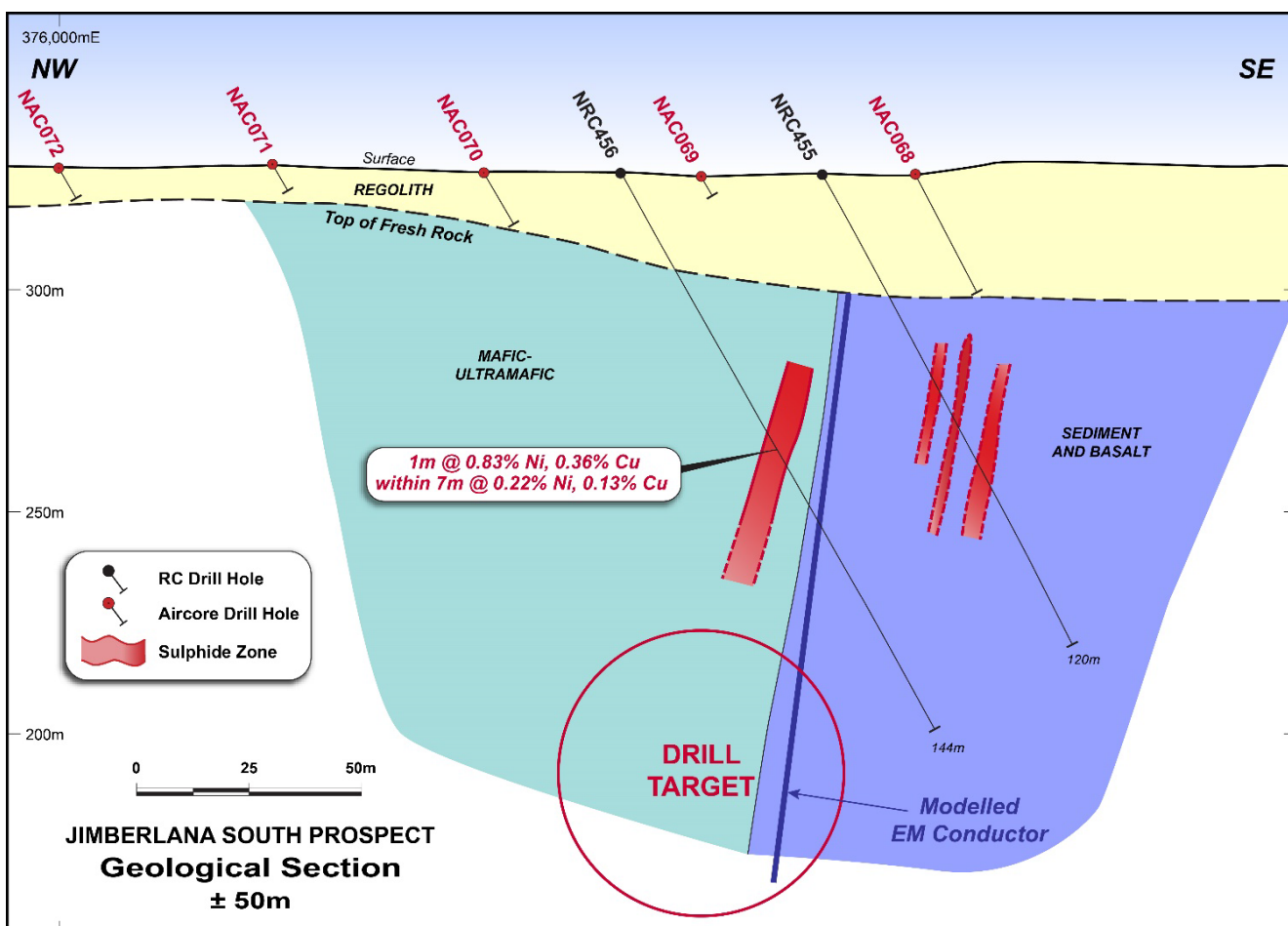
Our next drill program is scheduled to begin in late August where we will follow up our early results from the Jimberlana area. This drill campaign will also begin the systematic exploration of the five kilometres of prospective ground to the north of the Callisto discovery.

We are well funded to undertake our drill programs and look forward to the drill results from this emerging nickel-palladium district."

RC drill holes NRC455 and NRC456 targeted a strong electro-magnetic (EM) conductor adjacent to anomalous aircore drilling results ⁽¹⁾. Disseminated and matrix sulphides were intercepted in both RC drill holes with the highest assays coming from a sulphide lens within the ultramafic-mafic target rock in NRC456 (Figure 2).

Sulphide zones with anomalous nickel and copper occur within the sediment/basalt and these are also interpreted to be related to the emplacement of the mafic-ultramafic Jimberlana Dyke. The modelled EM conductor is located at the boundary between the target rock and the sediment and basalts.

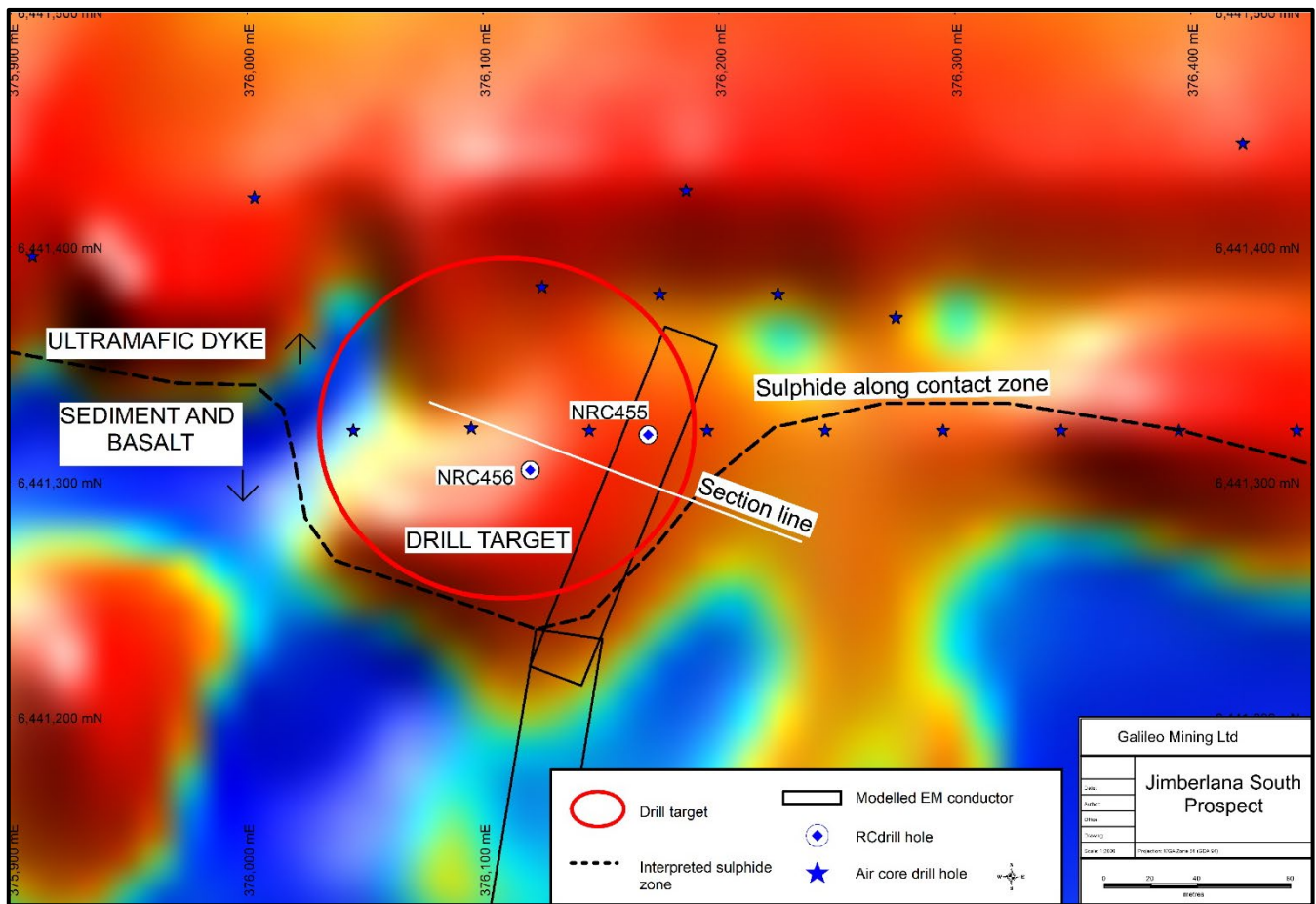
Figure 2 – Jimberlana South section with nickel sulphides. Section line shown in Figure 3.



Follow up RC drilling into the target zone shown in Figures 2 and 3 is scheduled to commence at the end of August with a 4,000 metre RC drill program planned to test both Jimberlana and Callisto targets.

Figure 3 shows the plan map of reported drilling at the Jimberlana South prospect with the prospective zone along the margin of the dyke.

Figure 3 — Jimberlana South prospect RC drilling with section line shown in Figure 2. The sulphide zone has been drilled at the contact between the ultramafic and the basalt/sediment to the south. Background is TMI-1VD magnetic image.



Systematic RC drilling of the area north of the Callisto discovery (Figure 4) is scheduled in conjunction with the follow up drilling at the Jimberlana prospects. The target horizon in this area is interpreted as being highly prospective for the intrusive rock types which host the palladium-nickel sulphide mineralisation at Callisto.

Assays from the remaining drill holes completed at the Mission Sill prospect during the June/July RC drill program are pending with final results from that program expected to be received in August.

(1) See Galileo ASX Announcement dated 3rd July 2023 for details.

Figure 4 — Callisto nickel-palladium discovery occurs at the southern end of a five-kilometre prospective zone. First pass RC drilling of the target horizon is planned to commence in late August.

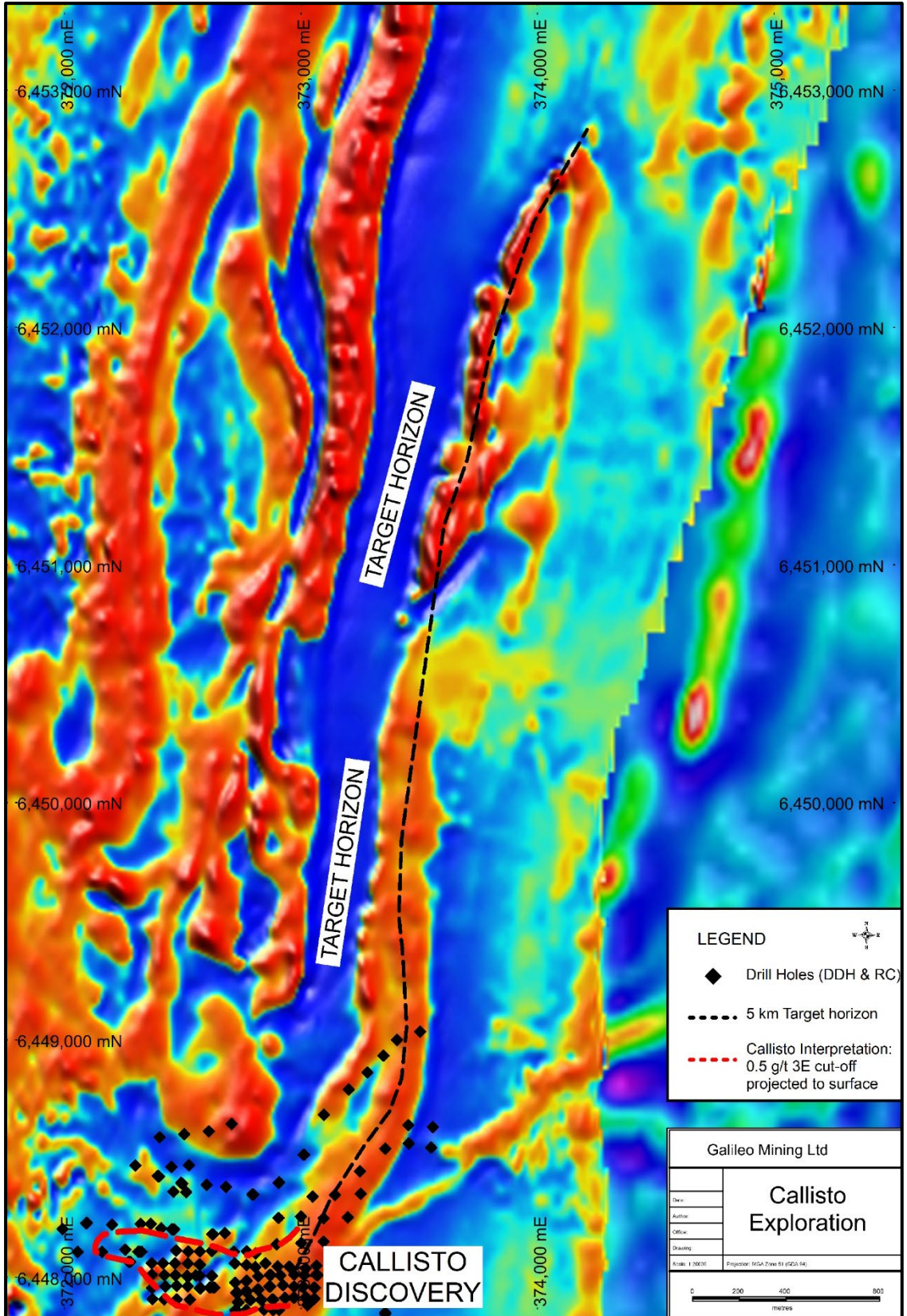


Figure 5 — Map of key prospect locations at the Norseman Project – Callisto, Jimberlana and Mission Sill adjacent to the main highway and eight kilometres from the town of Norseman.

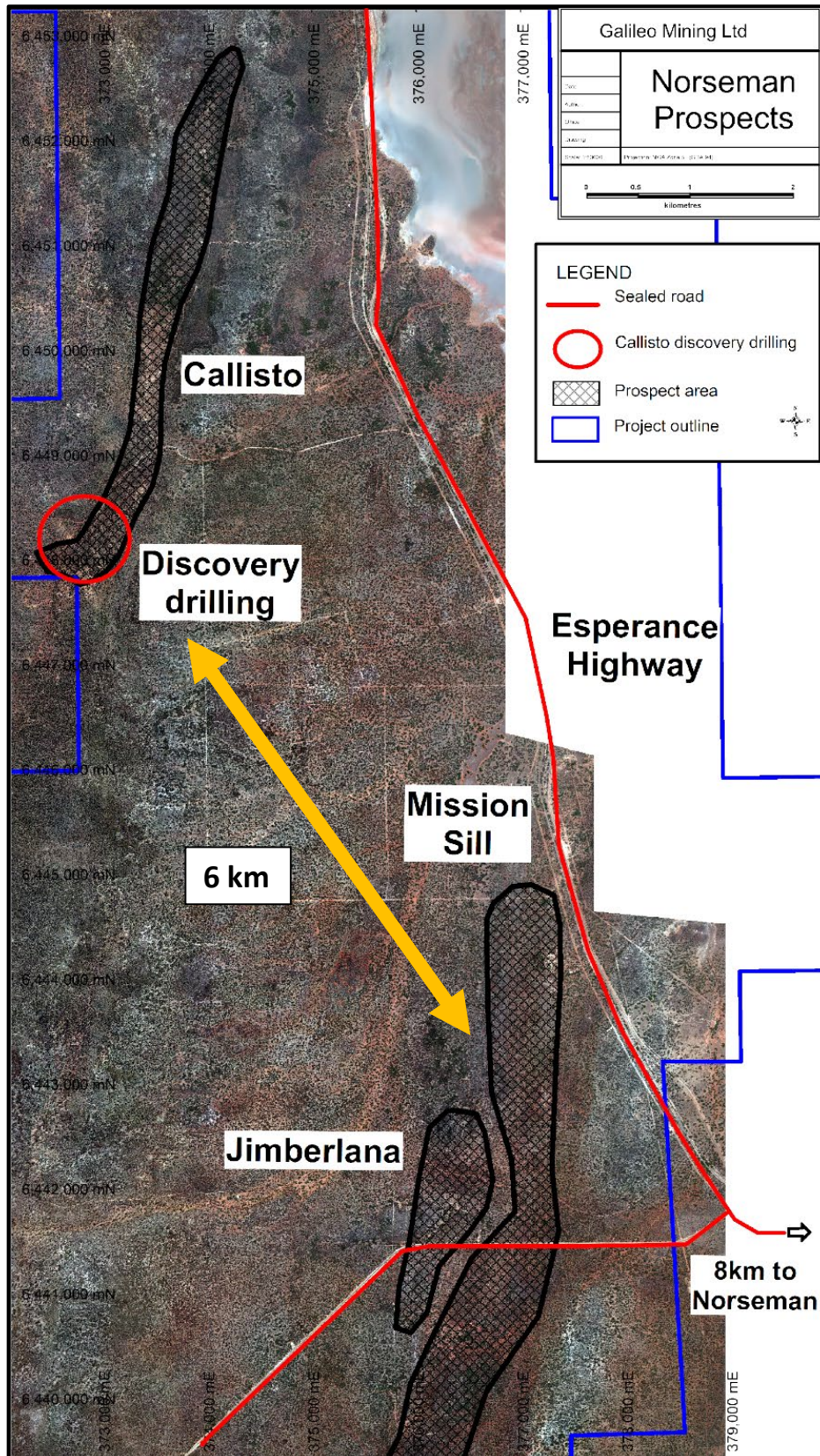
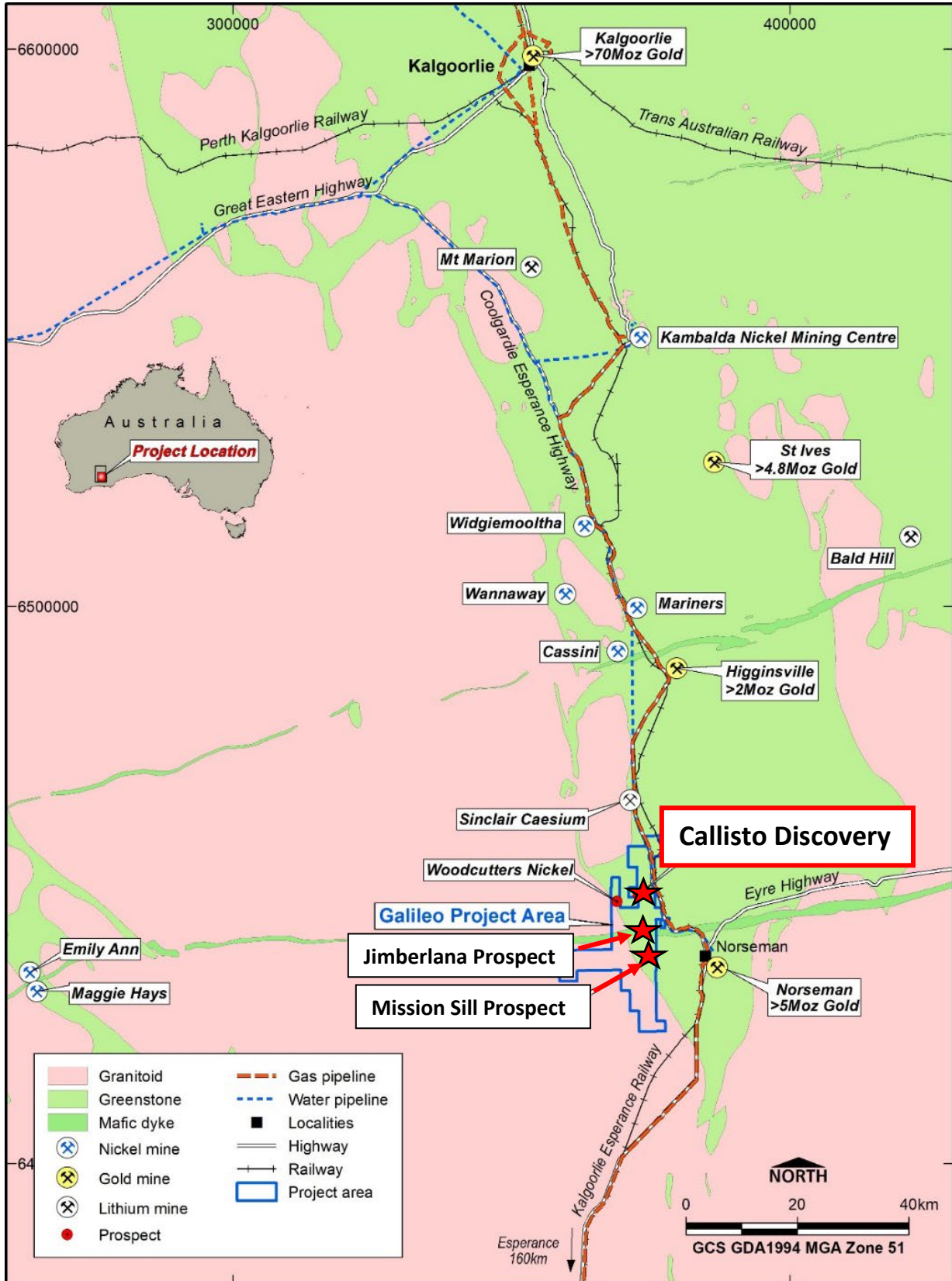


Figure 6 – Norseman project location map with a selection of regional mines and infrastructure





Competent Person Statement

The information in this report that relates to Exploration Results is based on, and fairly represents, information and supporting documentation prepared by Mr Brad Underwood, a Member of the Australasian Institute of Mining and Metallurgy, and a full time employee of Galileo Mining Ltd. Mr Underwood has sufficient experience that is relevant to the styles of mineralisation and types of deposit under consideration, and to the activity being undertaken, to qualify as a Competent Person as defined in the 2012 Edition of the “Australasian Code for Reporting of Exploration Results, Mineral Resources and Ore Reserves” (JORC Code). Mr Underwood consents to the inclusion in the report of the matters based on his information in the form and context in which it appears.

With regard to the Company’s ASX Announcements referenced in the above Announcement, the Company is not aware of any new information or data that materially affects the information included in the Announcements.

Authorised for release by the Galileo Board of Directors.

Investor information: phone Galileo Mining on + 61 8 9463 0063 or email info@galmining.com.au

Media:

David Tasker
Managing Director
Chapter One Advisors
E: dtasker@chapteroneadvisors.com.au
T: +61 433 112 936

About Galileo Mining:

Galileo Mining Ltd (ASX: GAL) is focussed on the exploration and development of palladium, nickel, copper, and cobalt resources in Western Australia. GAL’s tenements near Norseman are highly prospective for palladium-copper-nickel sulphide deposits as shown by the Callisto discovery. GAL also has Joint Ventures with the Creasy Group over tenements in the Fraser Range which are prospective for nickel-copper sulphide deposits similar to the operating Nova mine.

Appendix 1: Anomalous Drill Intersections

>0.1% nickel cut-off, maximum 3m internal dilution. Palladium assays were < 0.3 g/t and no significant platinum or gold was recorded.

Hole ID	From (m)	To (m)	Interval (m)	Nickel (%)	Copper (%)	Cobalt (%)
NRC455	53	57	4	0.18	0.22	0.03
	63	65	2	0.19	0.19	0.03
	76	82	6	0.13	0.16	0.02
NRC456	68	75	7	0.22	0.13	0.02
<i>including</i>	74	75	1	0.83	0.36	0.07

Appendix 2: Drill Hole Collar Details

Hole ID	East	North	RL	Azimuth	Dip	Total Depth (m)
NRC455	376173	6441320	325	90	-60	120
NRC456	376121	6441304	325	110	-60	144

Note: Easting and Northing coordinates are GDA94 Zone 51.

Appendix 3:

Logging of Sulphide Mode, Type, and Percentage

Cautionary Statement: Sulphide estimates are completed by visual observation.

Galileo Field Logging Guide

Sulphide Mode	Percent Range (visually estimated)
Weakly disseminated	< 1 %
Disseminated & blebby	1 – 5 %
Heavily disseminated	5 – 20 %
Matrix	20 – 40 %
Net textured	20 – 40 %
Semi-massive	>40 to < 80 %
Massive	>80 %

Appendix 4:
Galileo Mining Ltd – Norseman Project
JORC Code, 2012 Edition – Table 1

Section 1 Sampling Techniques and Data

(Criteria in this section apply to all succeeding sections.)

Criteria	JORC Code explanation	Commentary
<p><i>Sampling techniques</i></p>	<ul style="list-style-type: none"> • <i>Nature and quality of sampling (eg cut channels, random chips, or specific specialised industry standard measurement tools appropriate to the minerals under investigation, such as down hole gamma sondes, or handheld XRF instruments, etc). These examples should not be taken as limiting the broad meaning of sampling.</i> • <i>Include reference to measures taken to ensure sample representivity and the appropriate calibration of any measurement tools or systems used.</i> • <i>Aspects of the determination of mineralisation that are Material to the Public Report.</i> • <i>In cases where 'industry standard' work has been done this would be relatively simple (eg 'reverse circulation drilling was used to obtain 1 m samples from which 3 kg was pulverised to produce a 30 g charge for fire assay'). In other cases more explanation may be required, such as where there is coarse gold that has inherent sampling problems. Unusual commodities or mineralisation types (eg submarine nodules) may warrant disclosure of detailed information.</i> 	<ul style="list-style-type: none"> • Reverse Circulation (RC) drilling was used to obtain one metre individually bagged chip samples from pre-collars and RC test drill holes. • Each RC bag was spear sampled to provide a 4-metre representative composite sample for analyses. • A 1m sample split for each metre is collected at the time of drilling from the drill rig mounted cone splitter. • Selected 1m split sample intervals were selected from zones of interest and sent to the laboratory for analysis with remainder of drill hole assayed using 4m composite samples. • QAQC standards (blank & reference) and duplicate samples were included routinely with 1 per 20 samples being a standard or duplicate. • Samples were sent to an independent commercial assay laboratory. • All assay sample preparation comprised oven drying, pulverising and splitting to a representative assay charge pulp. • A 50g Lead Collection Fire Assay with ICP-MS finish is used to determine Au, Pt and Pd results. • A four acid digest is used for sample digest with a 48 element analysis suite including Ag, Al, As, Ba, Be, Bi, Ca, Cd, Ce, Co, Cr, Cs, Cu, Fe, Ga, Ge, Hf, In, K, La, Li, Mg, Mn, Mo, Na, Nb, Ni, P, Pb, Rb, Re, S, Sb, Sc, Se, Sn, Sr, Ta, Te, Th, Ti, Tl, U, V, W, Y, Zn, Zr by ICP-OES finish. • QAQC standards (blank & reference) and duplicate samples were included routinely with 1 per 20 samples being a standard or duplicate. • Samples have been sent to an independent commercial assay laboratory

Criteria	JORC Code explanation	Commentary
<i>Drilling techniques</i>	<ul style="list-style-type: none"> • <i>Drill type (eg core, reverse circulation, open-hole hammer, rotary air blast, auger, Bangka, sonic, etc) and details (eg core diameter, triple or standard tube, depth of diamond tails, face-sampling bit or other type, whether core is oriented and if so, by what method, etc).</i> 	<ul style="list-style-type: none"> • RC drilling was undertaken by Top Drill using a 5.5" face sampling drill bit. • All RC holes were surveyed during drilling using a GyroMaster north seeking gyro tool
<i>Drill sample recovery</i>	<ul style="list-style-type: none"> • <i>Method of recording and assessing core and chip sample recoveries and results assessed.</i> • <i>Measures taken to maximise sample recovery and ensure representative nature of the samples.</i> • <i>Whether a relationship exists between sample recovery and grade and whether sample bias may have occurred due to preferential loss/gain of fine/coarse material.</i> 	<ul style="list-style-type: none"> • RC sample recoveries are visually estimated for each metre with poor or wet samples recorded in drill and sample log sheets. • The sample cyclone was routinely cleaned at the end of each 6m rod and when deemed necessary. • No relationship has been determined between sample recoveries and grade and there is insufficient data to determine if there is a sample bias.
<i>Logging</i>	<ul style="list-style-type: none"> • <i>Whether core and chip samples have been geologically and geotechnically logged to a level of detail to support appropriate Mineral Resource estimation, mining studies and metallurgical studies.</i> • <i>Whether logging is qualitative or quantitative in nature. Core (or costean, channel, etc) photography.</i> • <i>The total length and percentage of the relevant intersections logged.</i> 	<ul style="list-style-type: none"> • Geological logging of RC drill holes was done on a visual basis with logging including lithology, grainsize, mineralogy, texture, deformation, mineralisation, alteration, veining, colour and weathering. • Logging of RC drill chips is qualitative and based on the presentation of representative drill chips retained for all 1m sample intervals in the chip trays. • All RC drill holes were logged in their entirety
<i>Sub-sampling techniques and sample preparation</i>	<ul style="list-style-type: none"> • <i>If core, whether cut or sawn and whether quarter, half or all core taken.</i> • <i>If non-core, whether riffled, tube sampled, rotary split, etc and whether sampled wet or dry.</i> • <i>For all sample types, the nature, quality and appropriateness of the sample preparation technique.</i> • <i>Quality control procedures adopted for all sub-sampling stages to maximise representivity of samples.</i> • <i>Measures taken to ensure that the sampling is representative of the in situ material collected, including for instance results for field duplicate/second-half sampling.</i> • <i>Whether sample sizes are appropriate to the grain size of the material being sampled.</i> 	<ul style="list-style-type: none"> • All RC assays reported are from 1m cone split samples. • 1m cone split samples were collected for all metres at the time of drilling from the drill rig mounted cone splitter. • Selected 1m cone split samples for intervals deemed of interest by the geologist supervising the drill rig were submitted for priority assay. • The samples are dried and pulverised before analysis. • QAQC reference samples and duplicates are routinely submitted with each batch. • The sample size is considered appropriate for the mineralisation style, application and analytical techniques used. • QAQC standards (blank & reference) and duplicate samples were included routinely with 1 per 20 samples being a standard or duplicate. • Samples have been sent to Intertek-

Criteria	JORC Code explanation	Commentary
		<p>Genalysis, an independent commercial assay laboratory where the samples are weighed to the nearest gram.</p> <ul style="list-style-type: none"> • The samples are dried, crushed to nominal 2mm and pulverised to nominal 85% passing 75um before analyses. • QAQC reference samples and duplicates are routinely inserted for submission with each batch.
Quality of assay data and laboratory tests	<ul style="list-style-type: none"> • <i>The nature, quality and appropriateness of the assaying and laboratory procedures used and whether the technique is considered partial or total.</i> • <i>For geophysical tools, spectrometers, handheld XRF instruments, etc, the parameters used in determining the analysis including instrument make and model, reading times, calibrations factors applied and their derivation, etc.</i> • <i>Nature of quality control procedures adopted (eg standards, blanks, duplicates, external laboratory checks) and whether acceptable levels of accuracy (ie lack of bias) and precision have been established.</i> 	<ul style="list-style-type: none"> • RC Chip and diamond core samples are analysed for a multielement suite (48 elements) by ICP-OES following a four-acid digest. Assays for Au, Pt, Pd are completed by 50gram Fire Assay with an ICP-MS finish. The assay methods used are considered appropriate. • QAQC standards and duplicates are routinely included at a rate of 1 per 20 samples • Further internal laboratory QAQC procedures included internal batch standards and blanks • Sample preparation was completed at Intertek Genalysis Laboratory, (Kalgoorlie) with digest and assay conducted by Intertek-Genalysis Laboratory Services (Perth) using a four acid (4A/MS48) for multi-element assay and 50gram Fire Assay with an ICP-MS finish for Au, Pt, Pd, (FA50/MS). • A Niton portable handheld XRF (pXRF) has been used only to assist field logging and as a guide for sample selection. No pXRF values are reported.
Verification of sampling and assaying	<ul style="list-style-type: none"> • <i>The verification of significant intersections by either independent or alternative company personnel.</i> • <i>The use of twinned holes.</i> • <i>Documentation of primary data, data entry procedures, data verification, data storage (physical and electronic) protocols.</i> • <i>Discuss any adjustment to assay data.</i> 	<ul style="list-style-type: none"> • Field data is collected on site using a standard set of logging templates entered directly into a laptop computer. Data is then sent to the Galileo database manager (CSA Global - Perth) for validation and upload into the database. • Assays are as reported from the laboratory and stored in the Company database and have not been adjusted in any way.
Location of data points	<ul style="list-style-type: none"> • <i>Accuracy and quality of surveys used to locate drill holes (collar and down-hole surveys), trenches, mine workings and other locations used in Mineral Resource estimation.</i> • <i>Specification of the grid system used.</i> 	<ul style="list-style-type: none"> • Drill hole collars are surveyed with a handheld GPS with an accuracy of +/- 5m which is considered sufficient for drill hole location accuracy. • Co-ordinates are in GDA94 datum,

Criteria	JORC Code explanation	Commentary
	<ul style="list-style-type: none"> • <i>Quality and adequacy of topographic control.</i> 	<p>Zone 51.</p> <ul style="list-style-type: none"> • Downhole depths are in metres measured downhole from the collar location on surface. • Topographic control has an accuracy of 2m based on detailed satellite imagery derived DTM or on laser altimeter data collected from aeromagnetic surveys
<i>Data spacing and distribution</i>	<ul style="list-style-type: none"> • <i>Data spacing for reporting of Exploration Results.</i> • <i>Whether the data spacing and distribution is sufficient to establish the degree of geological and grade continuity appropriate for the Mineral Resource and Ore Reserve estimation procedure(s) and classifications applied.</i> • <i>Whether sample compositing has been applied.</i> 	<ul style="list-style-type: none"> • Drill hole spacing for was designed to target potential mineralisation as indicated by previous drilling and geological interpretation. • This spacing has been deemed adequate for first pass assessment only and is not considered sufficient to determine JORC Compliant Inferred Resources and therefore laboratory assay results and additional drilling would be required. • RC drill holes were sampled from surface on a 4m composite basis or as 1m, 2m, or 3m samples as determined by the end of hole depth or under instruction from the geologist supervising the program. • 1m cone split RC samples were collected through zones of geological interest.
<i>Orientation of data in relation to geological structure</i>	<ul style="list-style-type: none"> • <i>Whether the orientation of sampling achieves unbiased sampling of possible structures and the extent to which this is known, considering the deposit type.</i> • <i>If the relationship between the drilling orientation and the orientation of key mineralised structures is considered to have introduced a sampling bias, this should be assessed and reported if material.</i> 	<ul style="list-style-type: none"> • It is unknown whether the orientation of sampling achieves unbiased sampling as interpretation of quantitative measurements of mineralised zones/structures has not yet been completed. • The drilling is oriented either perpendicular to the lithological strike and dip of the target rock or as holes adjacent to previous aircore drilling.
<i>Sample security</i>	<ul style="list-style-type: none"> • <i>The measures taken to ensure sample security.</i> 	<ul style="list-style-type: none"> • Each sample was put into a tied off calico bag and then several placed in large plastic “polyweave” bags which were zip tied closed. • Samples were delivered directly to the laboratory in Kalgoorlie by Galileo staff.
<i>Audits or reviews</i>	<ul style="list-style-type: none"> • <i>The results of any audits or reviews of sampling techniques and data.</i> 	<ul style="list-style-type: none"> • Continuous improvement internal reviews of sampling techniques and procedures are ongoing. No external audits have been performed.

Section 2 Reporting of Exploration Results

(Criteria listed in the preceding section also apply to this section.)

Criteria	JORC Code explanation	Commentary
Mineral tenement and land tenure status	<ul style="list-style-type: none"> Type, reference name/number, location and ownership including agreements or material issues with third parties such as joint ventures, partnerships, overriding royalties, native title interests, historical sites, wilderness or national park and environmental settings. The security of the tenure held at the time of reporting along with any known impediments to obtaining a licence to operate in the area. 	<ul style="list-style-type: none"> The Norseman Project comprises two exploration licenses, eighteen granted prospecting licenses and one mining lease covering 255km² All tenements within the Norseman Project are 100% owned by Galileo Mining Ltd. A 1% Net Smelter Royalty is payable to Australian Gold Resources Pty Ltd on mine production from within the Norseman Project (NSR does not apply to production from any laterite operations) The Norseman Project is centred around a location approximately 10km north-west of Norseman on vacant crown land. All tenements in the Norseman Project are 100% covered by the Ngadju Native Title Determined Claim. The tenements are in good standing and there are no known impediments.
Exploration done by other parties	<ul style="list-style-type: none"> Acknowledgment and appraisal of exploration by other parties. 	<p>Between the mid-1960's and 2000 exploration was conducted in the area for gold and base-metals (most notably Ni sulphides). Exploration focussed on the Mt Thirsty Sill and eastern limb of the Mission Sill.</p> <p>Central Norseman Gold Corporation/WMC (1966-1972)</p> <ul style="list-style-type: none"> Explored the Jimberlana Dyke for Ni-Cu-PGE-Cr. Soil sampling generated several Cu anomalies 160-320ppm Cu. <p>Barrier Exploration and Jimberlana Minerals Between (1968 and 1974)</p> <ul style="list-style-type: none"> Explored immediately south of Mt Thirsty for Ni-Cu sulphide. IP, Ground Magnetic Surveys, Soil Sampling, Soil Auger Sampling and Diamond Drilling was completed. <p>Resolute Limited, Great Southern Mines Ltd and Dundas Mining Pty Ltd (1993-1996)</p> <ul style="list-style-type: none"> Gold focussed exploration. Several gold anomalies were identified in soil geochemistry but were not followed up. Resolute assayed for Au, Ni, Cu, Zn but did not assay for PGE.

Criteria	JORC Code explanation	Commentary
		<ul style="list-style-type: none"> • Resolute Limited drilled laterite regolith profiles over the ultramafic portions of the Mt Thirsty Sill and identified a small Ni-Co Resource with high Co grades. <p>Kinross Gold Corp Australia (1999)</p> <ul style="list-style-type: none"> • Completed a 50m line spaced aeromagnetic survey. <p>2000-2004</p> <ul style="list-style-type: none"> • Australian Gold Resources (“AGR”) held “Mt Thirsty Project” from 2000 to 30th June 2004. Works identified Ni-Co resources on the Project. • Anaconda Nickel Ltd (“ANL”) explored AGR Mt Thirsty Project as part of the AGR/ANL Exploration Access Agreement 2000-2001. <p>AGR/ANL (2000-2001)</p> <ul style="list-style-type: none"> • Mapping focussed on identifying Co-Ni enriched regolith areas. • RC on 800mx100m grid at Mission Sill targeting Ni-Co Laterite (MTRC001-MTRC035). Nickel assay maximum of 0.50%, Co 0.16%, Cu to 0.23%. • Concluded the anomalous Cu-PGE association suggested affinity with Bushveldt or Stillwater style PGE mineralisation. A lack of an arsenic correlation cited as support for magmatic rather than hydrothermal PGE source. <p>AGR (2003-2004)</p> <ul style="list-style-type: none"> • Soil sampling over the Mission Sill and Jimberlana Dyke. • RC drilling (MTRC036-052) confirmed shallow PGE anomalism with best results of 1m at 2.04 combined Pt-Pd in MTRC038 from surface. • Petrography identified sulphide textures indicative of primary magmatic character. • Sixty samples were re-assayed for PGE when assays returned >0.05% Cu. A further 230 samples were re-assayed based on the initial Au-Pd-Pt results. The best combined result for Au-Pd-Pt was 5.7g/t.

Criteria	JORC Code explanation	Commentary
		<p>Galileo</p> <ul style="list-style-type: none"> Galileo commenced exploration on the Norseman Project from 30th June 2004 after sale of the tenements by AGR.
Geology	<ul style="list-style-type: none"> <i>Deposit type, geological setting and style of mineralisation.</i> 	<ul style="list-style-type: none"> The Norseman target geology and mineralisation style is PGE-nickel-copper mineralisation related to layered intrusions (sills and dykes) and komatiite nickel sulphide mineralisation occurring within the GSWA mapped Mount Kirk Formation (and intrusions into this formation) The Mount Kirk formation is described as “Acid and basic volcanic rocks and sedimentary rocks, intruded by basic and ultrabasic rocks”
Drill hole Information	<ul style="list-style-type: none"> <i>A summary of all information material to the understanding of the exploration results including a tabulation of the following information for all Material drill holes:</i> <ul style="list-style-type: none"> <i>easting and northing of the drill hole collar</i> <i>elevation or RL (Reduced Level – elevation above sea level in metres) of the drill hole collar</i> <i>dip and azimuth of the hole</i> <i>down hole length and interception depth</i> <i>hole length.</i> <i>If the exclusion of this information is justified on the basis that the information is not Material and this exclusion does not detract from the understanding of the report, the Competent Person should clearly explain why this is the case.</i> 	<ul style="list-style-type: none"> Refer to Appendices 1 and 2.
Data aggregation methods	<ul style="list-style-type: none"> <i>In reporting Exploration Results, weighting averaging techniques, maximum and/or minimum grade truncations (eg cutting of high grades) and cut-off grades are usually Material and should be stated.</i> <i>Where aggregate intercepts incorporate short lengths of high-grade results and longer lengths of low grade results, the procedure used for such aggregation should be stated and some typical examples of such aggregations should be shown in detail.</i> <i>The assumptions used for any reporting of metal equivalent values should be clearly stated.</i> 	<ul style="list-style-type: none"> Tables of relevant assay intervals of significance are included in previous releases. Parts-per-billion and parts-per-million data reported from the assay laboratory have been converted to grams-per-tonne for Au, Pd, Pt. Parts-per-million data reported from the assay laboratory for Cu and Ni have been converted to percent values and reported as percent values rounded to 2 decimal places. 3E intercepts have been calculated as the sum of Au, Pd and Pt assays in grams-per-tonne rounded to 2 decimal places.

Criteria	JORC Code explanation	Commentary
<i>Relationship between mineralisation widths and intercept lengths</i>	<ul style="list-style-type: none"> • <i>These relationships are particularly important in the reporting of Exploration Results.</i> • <i>If the geometry of the mineralisation with respect to the drill hole angle is known, its nature should be reported.</i> • <i>If it is not known and only the down hole lengths are reported, there should be a clear statement to this effect (eg 'down hole length, true width not known').</i> 	<ul style="list-style-type: none"> • The drilling is oriented perpendicular to the lithological strike and dip of the target rock unit • It is unknown whether the orientation of sampling achieves unbiased sampling of possible structures as no measurable structures are recorded in drill chips. • No quantitative measurements of mineralised zones/structures exist, and all drill intercepts are reported as down hole length in metres, true width unknown.
<i>Diagrams</i>	<ul style="list-style-type: none"> • <i>Appropriate maps and sections (with scales) and tabulations of intercepts should be included for any significant discovery being reported. These should include, but not be limited to a plan view of drill hole collar locations and appropriate sectional views.</i> 	<ul style="list-style-type: none"> • Project location map and plan map of the drill hole locations with respect to each other and with respect to other available data are included in the text. • Drill hole locations have been determined with hand-held GPS drill hole collar location (Garmin GPS 78s) +/- 5m in X/Y/Z dimensions
<i>Balanced reporting</i>	<ul style="list-style-type: none"> • <i>Where comprehensive reporting of all Exploration Results is not practicable, representative reporting of both low and high grades and/or widths should be practiced to avoid misleading reporting of Exploration Results.</i> 	<ul style="list-style-type: none"> • All available relevant information is presented.
<i>Other substantive exploration data</i>	<ul style="list-style-type: none"> • <i>Other exploration data, if meaningful and material, should be reported including (but not limited to): geological observations; geophysical survey results; geochemical survey results; bulk samples – size and method of treatment; metallurgical test results; bulk density, groundwater, geotechnical and rock characteristics; potential deleterious or contaminating substances.</i> 	<ul style="list-style-type: none"> • Detailed 50m line spaced aeromagnetic data has been used for interpretation of underlying geology. Data was collected by Magspec Airborne Surveys Pty Ltd using a Geometrics G-823 caesium vapor magnetometer at an average flying height of 30m. • 28 lines (for 657 stations) of 200m or 400m line x 100m station spaced Moving Loop Electromagnetic survey data was collected over the prospect using a 200m loop. Data was collected using a Smartem receiver and Fluxgate receiver coil at base frequencies of 1.0Hz to 0.25Hz and 28-30 Amp current. Two conductor plates were modelled. Based on the available drill logs these conductors appear to represent the position of sulphide rich sediment beneath the target mafic-ultramafic intrusion.

Criteria	JORC Code explanation	Commentary
<i>Further work</i>	<ul style="list-style-type: none"> • <i>The nature and scale of planned further work (eg tests for lateral extensions or depth extensions or large-scale step-out drilling).</i> • <i>Diagrams clearly highlighting the areas of possible extensions, including the main geological interpretations and future drilling areas, provided this information is not commercially sensitive.</i> 	<ul style="list-style-type: none"> • RC drill testing • Laboratory assaying