



16 August 2023

Drilling In Progress at Skeleton Rocks testing Nickel-Copper and Lithium targets

Key highlights:

- Aircore drilling is currently in progress at Skeleton Rocks to test separate nickel-copper and lithium pegmatite targets:
 - Drill results up to 3m @ 0.65% Ni in historic RC drilling
 - Several pegmatites noted in historic drill logging were never assayed for lithium

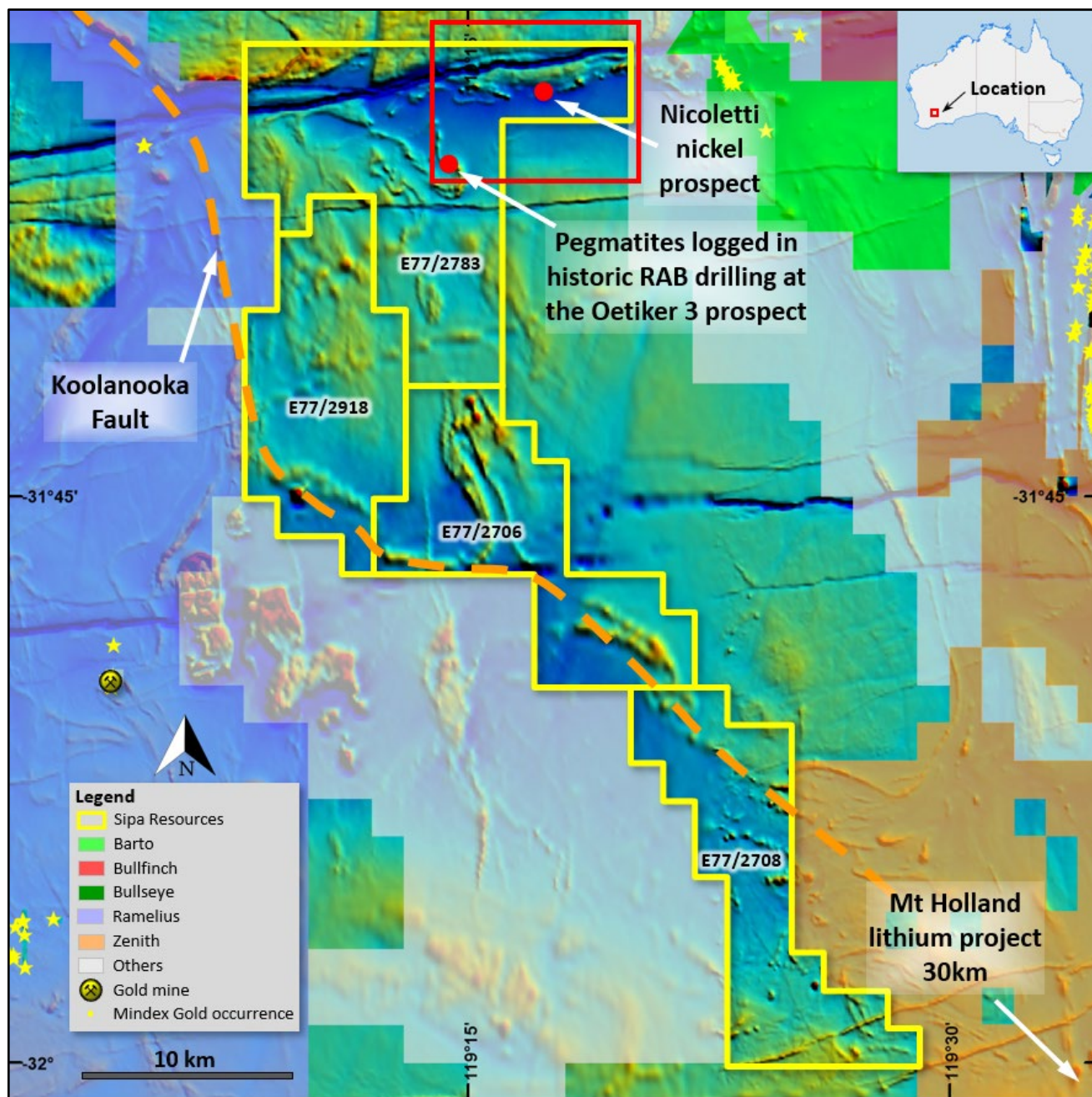
Sipa Resources Limited (**ASX: SRI**) ("**Sipa**" or "the **Company**") advises that drilling is in progress at its 100%-owned Skeleton Rocks project (Figure 1), testing nickel-copper and lithium pegmatite targets identified from historic exploration work. The program is estimated to comprise approximately 1,500m of aircore and will take approximately 1 week to complete.

Surface sampling and reverse circulation (RC) drilling by Westonia Mines Limited in 2006 at the Nicoletti prospect identified nickel potential within Sipa's Skeleton Rocks project. Up to 3m @ 0.65% Ni was intersected from 36-39m within an overall intercept of 27m @ 0.36% Ni from 18-45m in hole WJRA06 047 (WAMEX A73179), among other intercepts outlined in detail in Sipa's ASX release of 13 February 2023. The current drill program is testing along strike and underneath this known anomalism (Figures 1 & 2).

The Skeleton Rocks is also prospective for lithium and is strategically located between the Great Eastern Highway and the Mt Holland lithium project, currently being developed in a joint venture between ASX conglomerate Wesfarmers and Chilean mining major Sociedad Quimica y Minera de Chile S.A. (SQM). Previous Sipa drill programs have identified localised lithium-caesium-rubidium anomalism (refer ASX release 14 December 2022) but the source of the anomalism is yet to be identified. In the northern part of the project area pegmatites were logged in historic drilling at the Oetiker 3 prospect by Westonia Mines Limited (WAMEX A73179) and Roebuck Resources (WAMEX A48382), but not assayed for lithium or other associated elements. The current drill program is planned to intersect these pegmatites again to collect samples for assay, as well as test more broadly for new pegmatites in prospective locations inferred from available geophysical surveys.

Sipa Resources Managing Director, Pip Darvall said:

“We are currently very active in the field, testing high impact targets at our Skeleton Rocks project and getting set up to commence drilling at Paterson North. At Skeleton Rocks the drill program is following up historic nickel-copper and pegmatite intercepts, while the Paterson North drilling funded by Rio Tinto Exploration will be targeting copper-gold systems. Success at either of these drill programs would be transformative for the Company.”



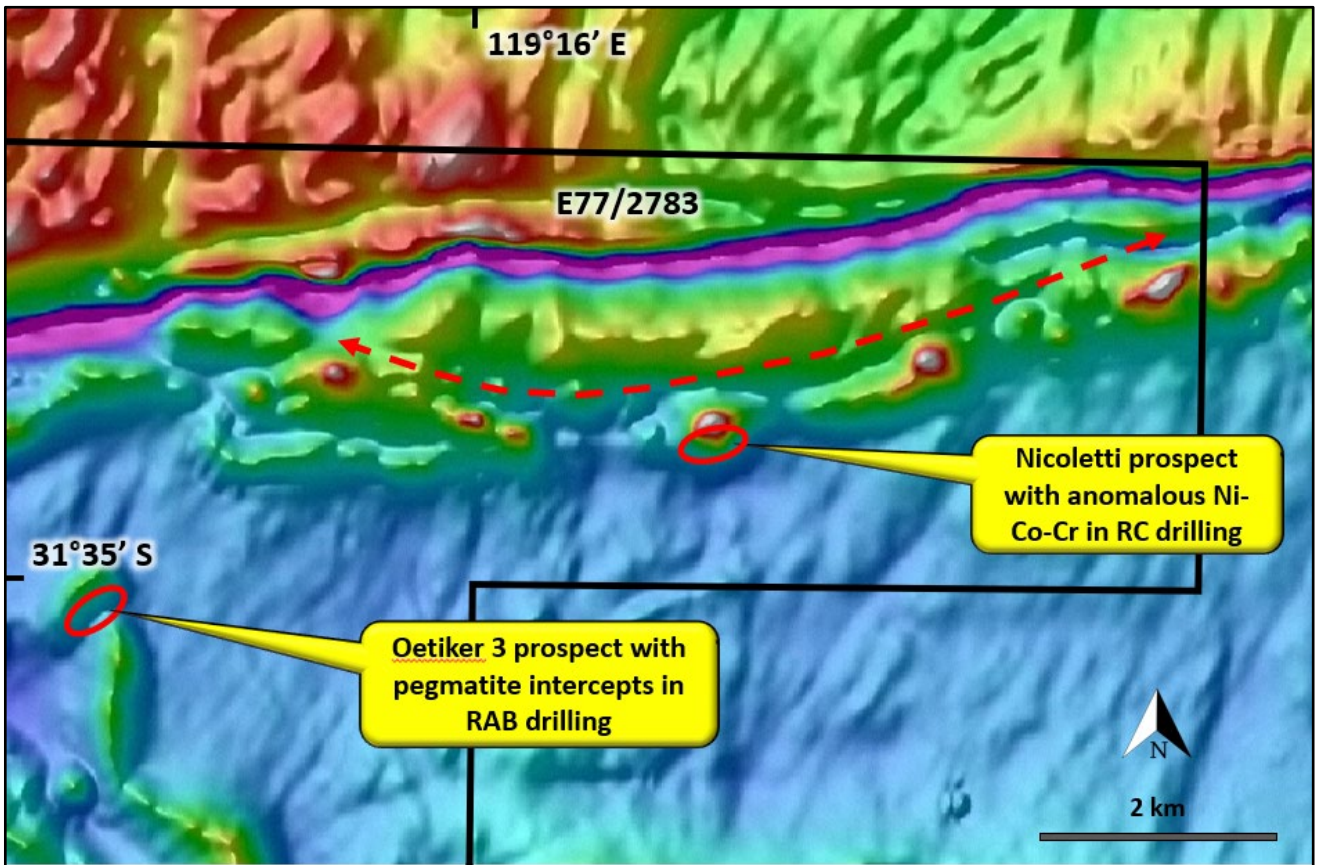


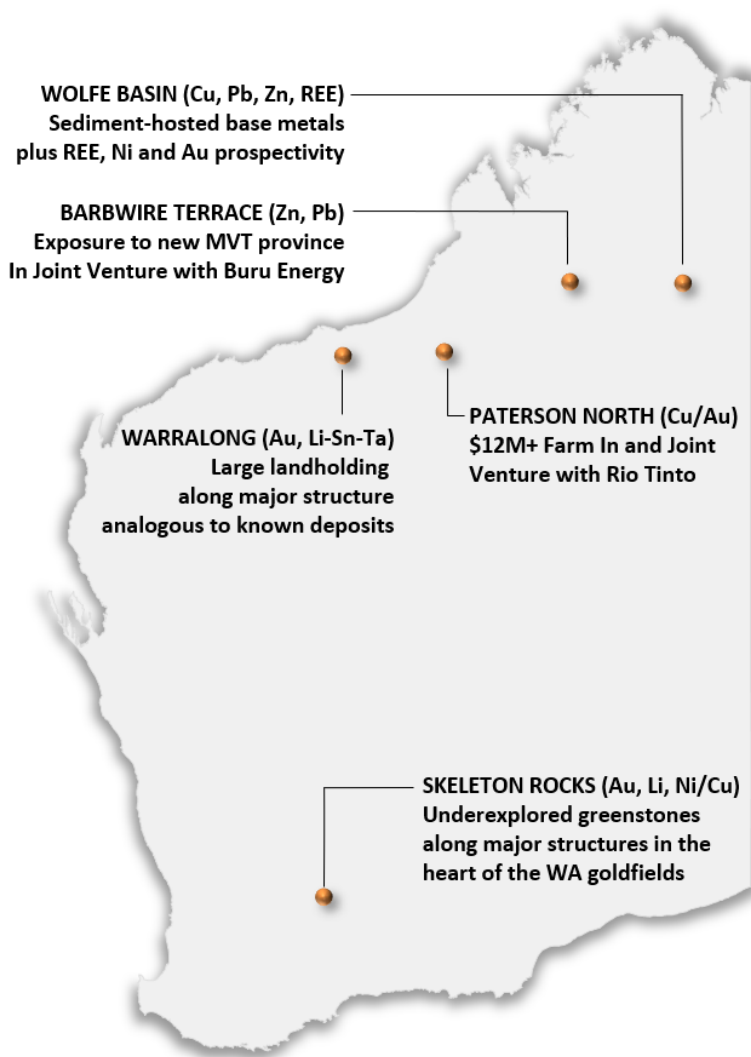
Figure 2 - Detailed RTP aeromagnetics over the north-western part of E77/2783. Drilling is focussed on the two circled areas at the Nicoletti (Ni-Cu), and Oetiker 3 (pegmatite) prospects.

Competent Person's Statement

The information in this report that relates to Exploration Results is based on, and fairly represents, information and supporting documentation compiled by Mr. Chris Shaw, a Member of the Australian Institute of Geoscientists. Mr. Shaw is a full-time employee of Sipa Resources Limited and has sufficient experience relevant to the styles of mineralisation and types of deposit under consideration and to the activities being undertaken to qualify as a Competent Person as defined in the 2012 Edition of the 'Australasian Code for Reporting of Exploration Results, Mineral Resources and Ore Reserves'. Mr. Shaw consents to the inclusion in this report of the matters based on his information in the form and context in which they appear.



About Sipa



Sipa Resources Limited (ASX: SRI) is an Australian-based exploration company focused on the discovery of gold and base metal deposits in Western Australia.

The Paterson North Copper-Gold Project is being progressed in partnership with Rio Tinto Exploration, and the Barbwire Terrace Base Metals Project in joint venture with energy company Buru Energy Limited.

At Wolfe Basin, extensive base metal anomalism and gossans have provided several targets for drill testing along a prospective horizon over 40km long. The Warralong Project is prospective for intrusion hosted gold, lithium-tin-tantalum and nickel-copper in the north Pilbara region in a 'look-alike' structural setting to recent discoveries in the district.

The Skeleton Rocks project covers outcropping and interpreted greenstone units prospective for gold, lithium and nickel-copper-platinum group element (Ni-Cu-PGE) deposits with limited to no previous drilling ever completed in these areas.

In Uganda, Sipa holds a Retention License over an intrusive-hosted Ni-Cu sulphide discovery with significant scale potential.

This announcement has been authorised for release by the Board of Sipa Resources Limited.

More Information:

Pip Darvall, Managing Director

Sipa Resources Limited

+61 (0) 8 9388 1551

reception@sipa.com.au

Sam Jacobs, Investor and Media Inquiries

Six Degrees IR

+61 (0) 423 755 909

sam.jacobs@sdir.com.au



Sipa Resources Limited