

1,196km² Total Lithium Area

Canada - Finland - Sweden

Lithium Presentation | AUGUST 2023

Disclaimer

These materials include forward looking statements. Forward looking statements inherently involve subjective judgment & analysis & are subject to significant uncertainties, risks & contingencies, many of which are outside of the control of, & may be unknown to, the company.

Actual results and developments may vary materially from that expressed in these materials. The types of uncertainties which are relevant to the company may include, but are not limited to, commodity prices, political uncertainty, changes to the regulatory framework which applies to the business of the company & general economic conditions. Given these uncertainties, readers are cautioned not to place undue reliance on such forward looking statements.

Forward looking statements in these materials speak only at the date of issue. Subject to any continuing obligations under applicable law or any relevant stock exchange listing rules, the company undertakes any obligation to publicly update or revise any of the forward looking statements, changes in events, conditions or circumstances on which any such statement is based.

Some statements in this presentation regarding estimates or future events are forward looking statements. They involve risk and uncertainties that could cause actual results to differ from estimated results. Forward looking statements include estimates of future production, cash and total costs per ounce of production, reserve and mineralised material estimates, capital costs, and other estimates or prediction of future activities. They include statements preceded by words such as "believe," "estimate," "expect," "intend," "will," and similar expressions. Actual results could differ materially depending on such things as political events, labour relations, currency fluctuations and other general economic conditions, market prices for Pure Resources Ltd products, timing of permits and other government approvals and requirements, changes in operating conditions, lower than expected ore grades, unexpected ground and mining conditions, availability and cost of materials and equipment, and risks generally inherent in the ownership and operation of mining properties and investment in foreign countries.

The information in this report which relates to Exploration Results is based on information compiled by Dr. James Warren, a Competent Person who is a member of the Australian Institute of Geoscientists. Dr. Warren is a Non-Executive Director of Pure Resources Limited. Dr. Warren has sufficient experience relevant to the style of mineralisation and type of deposit under consideration and to the activity he is undertaking to qualify as a Competent Person as defined in the 2012 Edition of the "Australian Code of Reporting of Exploration Results, Mineral Resources and Ore Reserves". Dr. Warren consents to the inclusion in this report of the matters based on the information in the form and context in which it appears.

Corporate Summary

37,500,010

Shares on issue

25,650,009

Tradeable shares¹

18,750,009

Listed Options PR10A²

\$9.5M

Market Capitalisation³

\$2.5m

Cash at 30 June 2023

\$7.0m

Enterprise Value

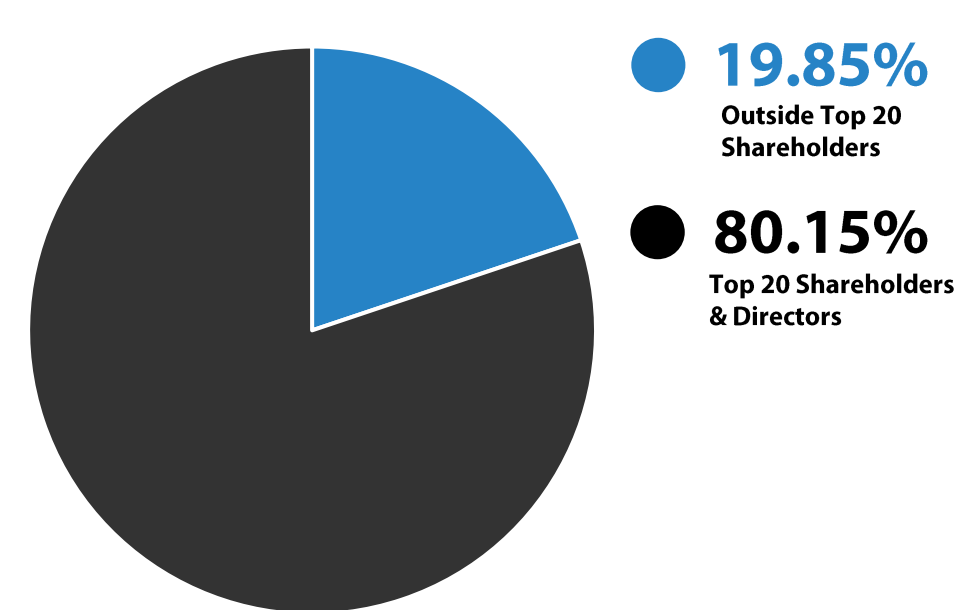
80.15%

Top 20 Ownership

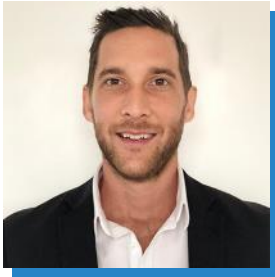
SHARE PRICE PERFORMANCE



ASX:PR1 SHAREHOLDER SPREAD



Board and Management



Patric Glovac

EXECUTIVE CHAIRMAN

Mr Glovac co-founded GTT Ventures Pty Ltd in 2013, a boutique corporate advisory firm, specialising in the resource and technology sector and is currently the Executive Director of Global Oil and Gas (ASX:GLV).

Mr Glovac previously served as an executive director of Tao Commodities Ltd (ASX: TAO) (now named Iperionx Limited (ASX: IPX)) and as non- executive director of Prominence Energy Ltd (ASX: PRM).



Dr James Warren

NON-EXECUTIVE DIRECTOR

Dr Warren is currently the Chief Technical Officer of Marquee Resources Ltd (ASX: MQR) and for the past two years has been working at private enterprise Tali Resources Pty Ltd where he has been instrumental in generating original geological frameworks and driving project acquisition, while overseeing exploration and company promotion.

Dr Warren is a geologist holding a variety of technical, operational and leadership roles spanning greenfield target generation to production. He completed his PhD, focusing on the Kunanalling and Zulieka shear zones while working for Phoenix Gold Ltd, and was a key member of the exploration team prior to Phoenix Goldfields eventual takeover by Evolution Mining Ltd (ASX: EVN).



Jane Law

NON-EXECUTIVE DIRECTOR

Ms Law has more than 20 years' experience in international trade relation and was most recently engaged as a Trade Commissioner with the Australian Trade Commission.

Ms Law previously served as regional manager with the Department of Commerce and Trade Western Australia. Her main role was to lead a team of business development managers to advise and facilitate Australian companies to design and implement export market entry strategies and inward investment attraction strategies.



Quinton Meyers

COMPANY SECRETARY

Mr Meyers has over six years of experience working in the equities markets in the capacity of a Stockbroker, Company Secretary and Accountant for multiple ASX listed companies gaining exposure to the Resource, Oil and Gas and technology sectors. During this time, Mr Meyers has worked on multiple initial public offers (IPO), reverse takeovers (RTO), equity capital markets (ECM) transactions while developing his knowledge of the ASX Listing Rules and Corporations Act.

Mr Meyers holds a Bachelor of Commerce in Accounting and Finance from Curtin University, a Graduate Diploma in Financial Planning and is a member of the Chartered Accountants Australian & New Zealand.

Why Invest in Pure Resources Ltd?



PR1 has one of the cleanest and tightest capital structures on the ASX

25.65m

Tradeable shares on issues

80%

The top 20 shareholder ownership

- ✓ Since listing on the ASX, PR1 has staked five areas totaling 1,196km² prospective for lithium across Canada (Quebec), Finland and Sweden.



Majority of projects have outcropping pegmatites, with more than 300 pegmatites combined.

- ✓ All projects are either adjacent to or along strike of existing lithium spodumene discoveries or deposits.
- ✓ The company has officially commenced five lithium focused exploration programs that will include detailed mapping and sampling of high priority pegmatites and pegmatite clusters.



Greenfields opportunity to uncover the next significant lithium deposit

- ✓ **Pure Resources Ltd is dual listed** on the ASX and the Frankfurt Stock Exchange under the tickers:
↗ **ASX:PR1** ↗ **FRA:YOL**
- ✓ PR1 expects to appoint a European-based consultant shortly to assist **with promotion and marketing activities to Institutional and high-net worth investors.**
- ✓ The European consultant will also be engaged to make introductions to European car (EV) manufacturers as well as provide advice and make **applications for European funding grants.**



We are 100% dependent on lithium imports. The EU, if finding the right environmental approach, will be self-sufficient in a few years, using its resources.’



Thierry Breton
EU commissioner

PURE RESOURCES

Canada (Quebec) – Lithium

Lafarge Lithium Project - Quebec (Canada)

- ✓ PR1 (Canada) Ltd (a wholly owned subsidiary of Pure Resources Ltd) staked a **serious belt-scale project** totaling 261 km².
- ✓ The Lafarge Lithium project is positioned **65km northeast of Patriot Battery Metals Inc** (ASX:PMT) Corvette lithium deposit.
- ✓ Rock types of the Lafarge Greenstone Belt are dominated by amphibolite facies. This stratigraphy is analogous to PMT's Corvette property where **pegmatite intrusions** are hosted within basalt derived amphibolite rocks.
- ✓ In November 2022 Pure sampled ~5% of the project where geochemical sampling identified elevated concentrations of lithium and pathfinder elements associated with the presence of **Lithium-Caesium-Tantalum (LCT) pegmatites (Li, Ta, Nb, Cs, Rb)**.

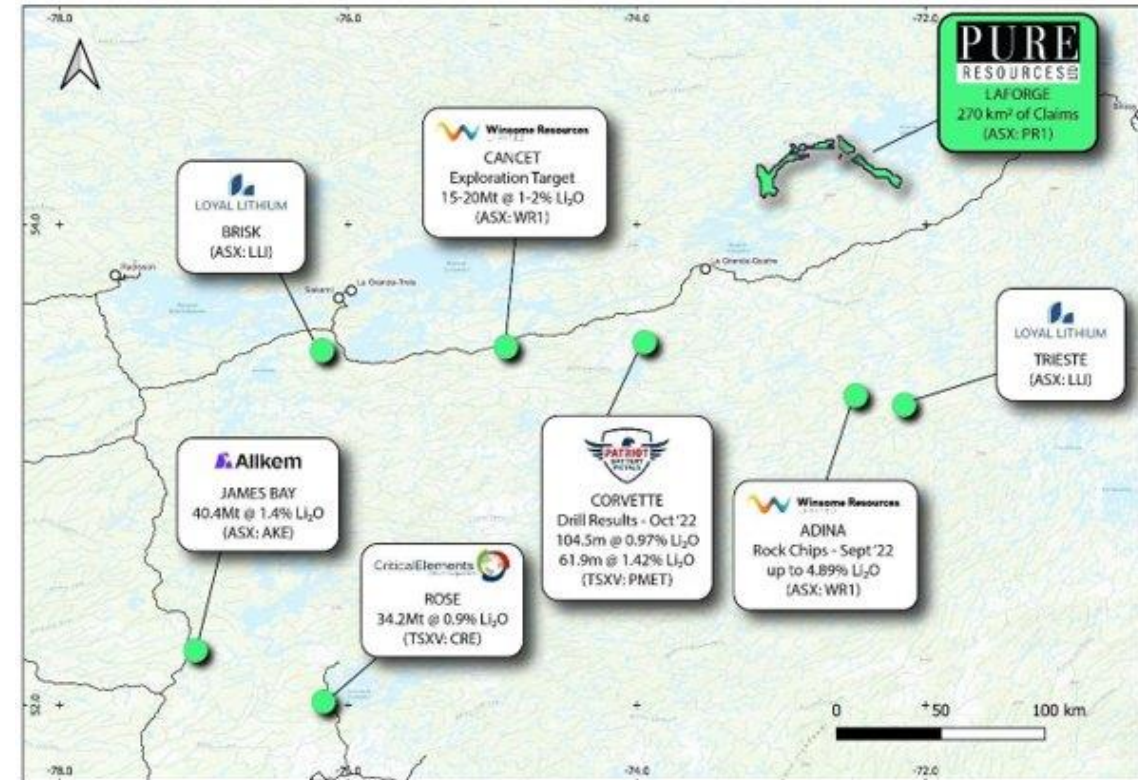
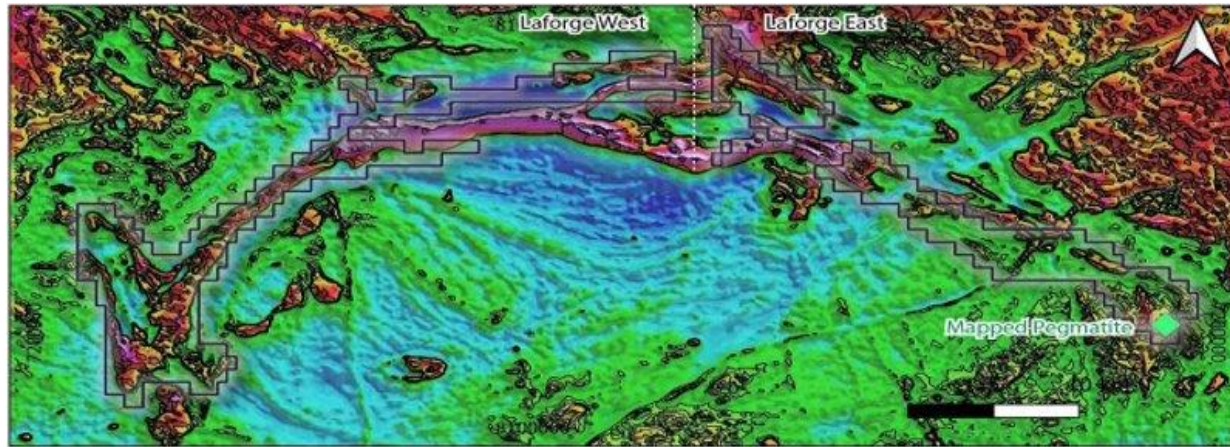


Figure 1: Lithium companies in the James Bay region, Quebec, Canada

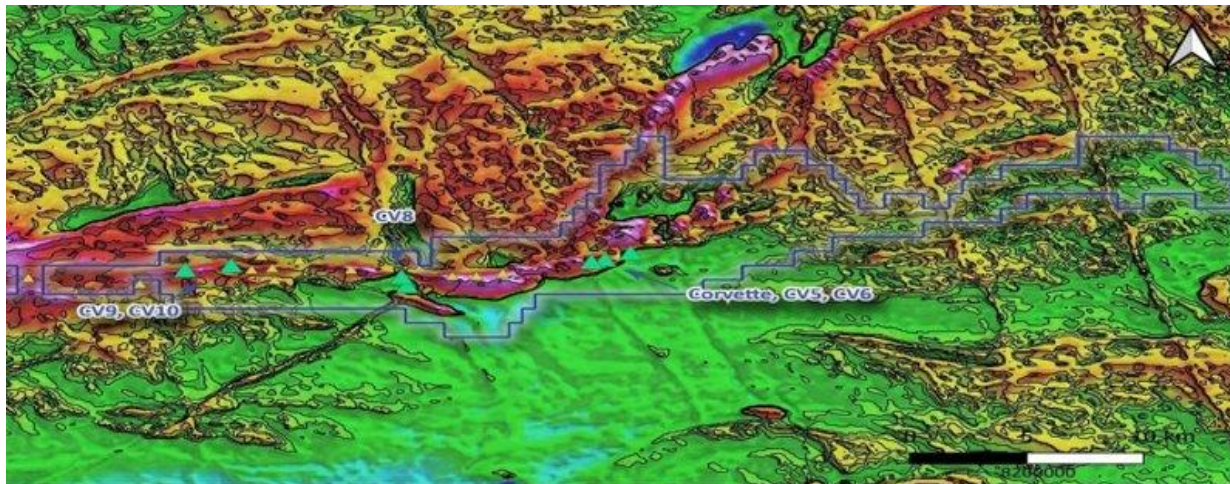
Laforge Lithium – Magnetic Imagery



Magnetic image PR1 (Canada) Ltd

(ASX:PR1)
Laforge Project

Figure 2: Highlighting the high-magnetic, primary target corridors.
Scale 1:550,000



Magnetic image Patriot Battery Metals Inc.

(ASX:PMT)
Corvette Deposit

Figure 3: highlighting the high-magnetic, primary target corridors.
Scale 1:400,000

Lafarge Lithium – Exploration Program

Apex Geoscience (Canada) will commence a detailed mapping and sampling program across the remaining 95% of the project to identify potential spodumene hosting pegmatites, commencing 20 August 2023.

Previous exploration identified outcrops and recent sampling identified the presence of lithium and other pathfinder elements including:

- ✓ Coarse mineral grain size with visible pegmatitic textures (graphic mineral intergrowths, exsolution laminae in feldspars).
- ✓ Encouraging presence of other phases indicative of a fertile melt (biotite, muscovite, possible tourmaline).
- ✓ Elevated concentrations of pathfinder elements associated with the presence of LCT pegmatites (Li, Ta, Nb, Cs, Rb).

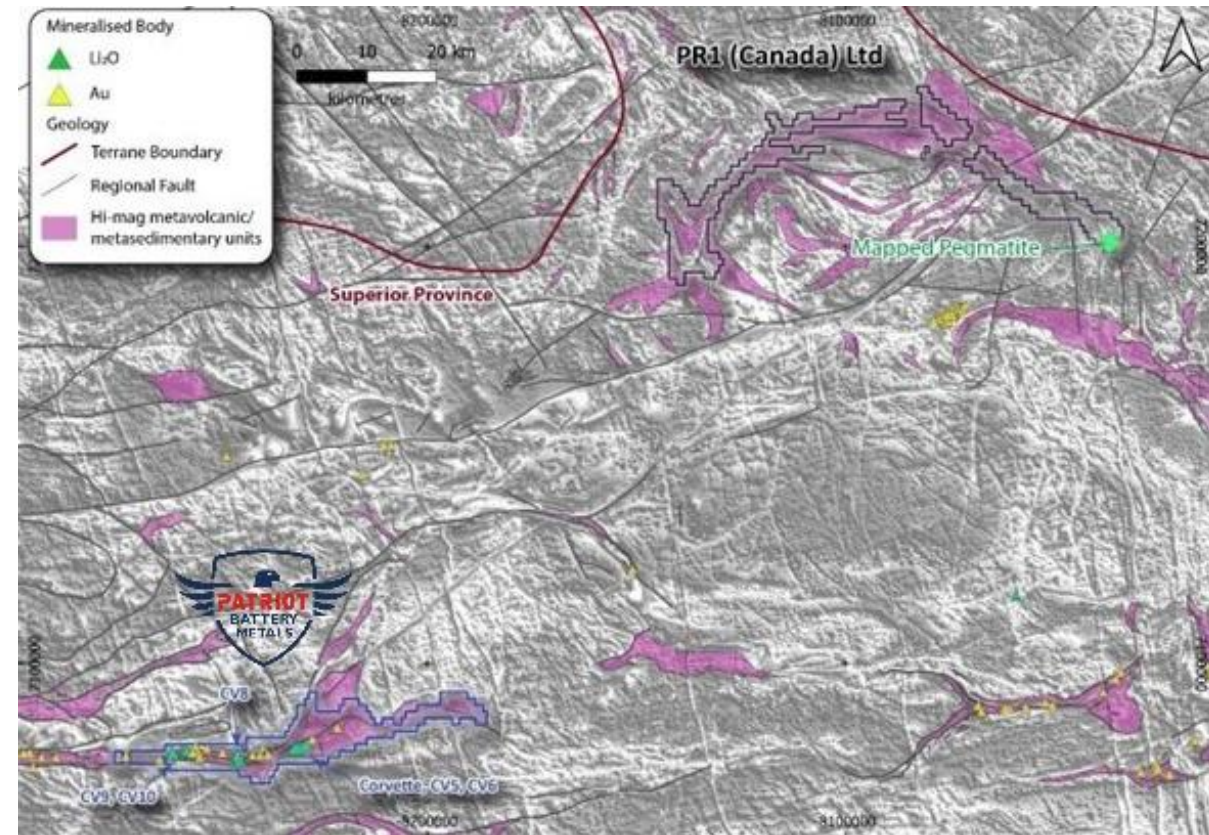


Figure 4: Magnetic image of the northeast Superior province, Quebec, Canada

PURE RESOURCES

Finland – Lithium

Finland Lithium Projects

- ✓ PR1 Finland Oy (a wholly owned subsidiary of Pure) owns two Prospecting Reservations in southern Finland named Kova and Kast.
- ✓ The two reservations cover an area of ~683km² and are considered **highly prospective for LCT pegmatite deposits** and are also prospective for gold and base metal mineralisation.
- ✓ Prospective for both LCT and mixed or 'hybrid' rare-element pegmatites which have blended **rare-element (REE)** signatures and are a mix between **LCT pegmatites** and **Niobium–Yttrium–Fluorine (NYF) pegmatites** enriched in Be, Sn, B, Nb > Ta, Ti, Y, REE.
- ✓ Exploration activities commenced 8 August 2023.



Approximately 318 pegmatites have been observed across the two projects.

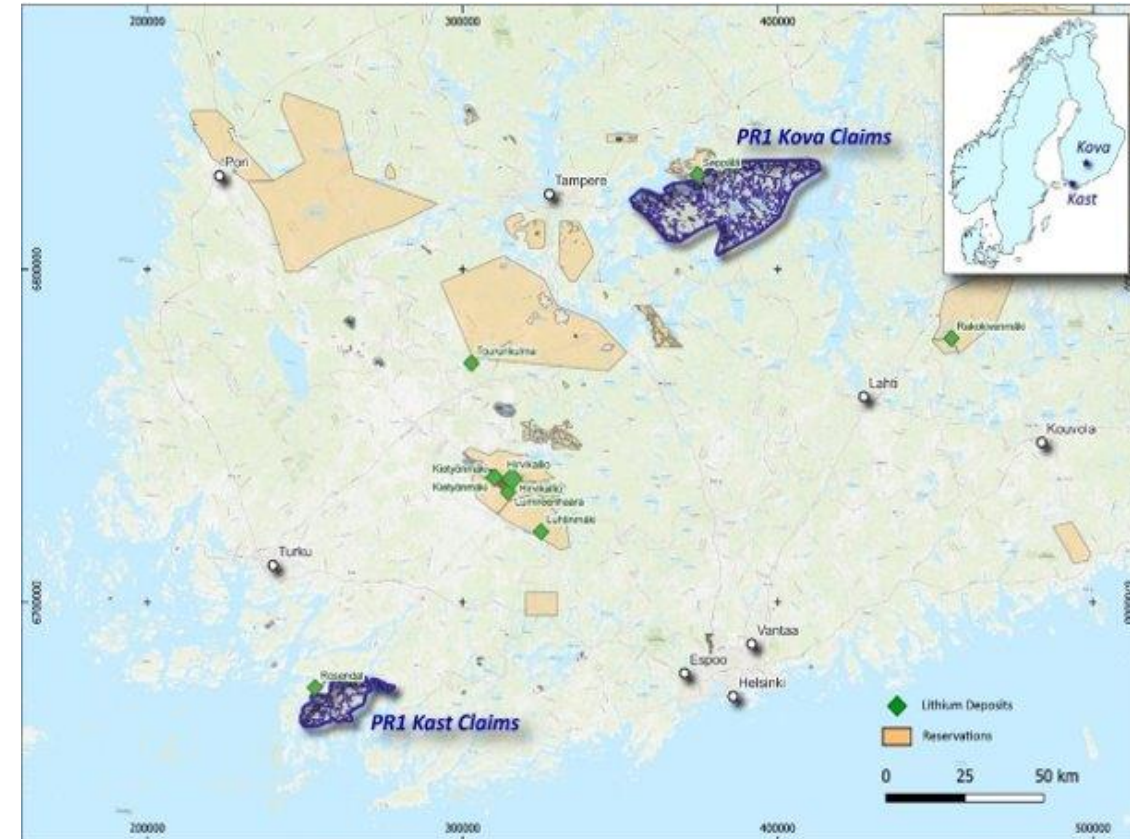


Figure 5: Location of the Kova and Kast Reservations, southern Finland.

Kova Lithium (544km²) – Finland

- ✓ The Kova Reservation is adjacent to, and is geologically analogous to the Seppälä lithium deposit and partially sits within the Eräjärvi metallogenic area.
- ✓ **Two hundred and twenty (220) pegmatite sites** have been mapped within the Kova Reservation with clusters of pegmatites to be targeted during the first phase of mapping and sampling.
- ✓ Additionally, **501m of granite pegmatite** have been logged from **78 diamond drillholes** completed on the Kova reservation with no sampling or assaying for lithium completed.



More than 70 complex and numerous simple pegmatite dykes are known from the area near the Seppälä lithium deposit with pegmatites enriched in B, Be, Li, Nb, Sn Ta.

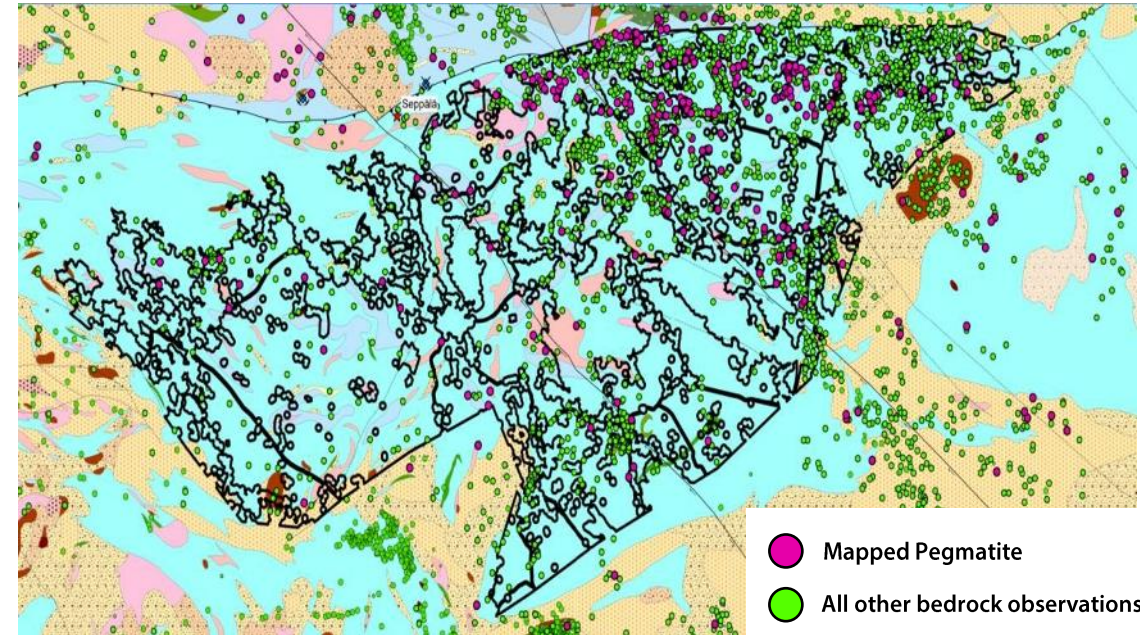


Figure 6: Documented observations of bedrock. Sources for bedrock rock type (GTK): bedrock observation database (licensed), rock geochemistry database (openlicense), and national petrophysical database (open license).

Kova Lithium – Exploration Program

- ✓ Highly experienced Finland based geological consultants GeoPool appointed to review data and conduct mapping and sampling activities at Kova commencing 8 August 2023.
- ✓ Given the sheer area size of the reservations, Geopool will first focus its exploration work on the northern area comprising approximately fifty-five Tier 1 pegmatite targets and pegmatite clusters at Kova.



Geopool will visit the Finland Core Library and view the 501m of granite pegmatite which have been logged from 78 diamond drillholes, although never sampled for Lithium.

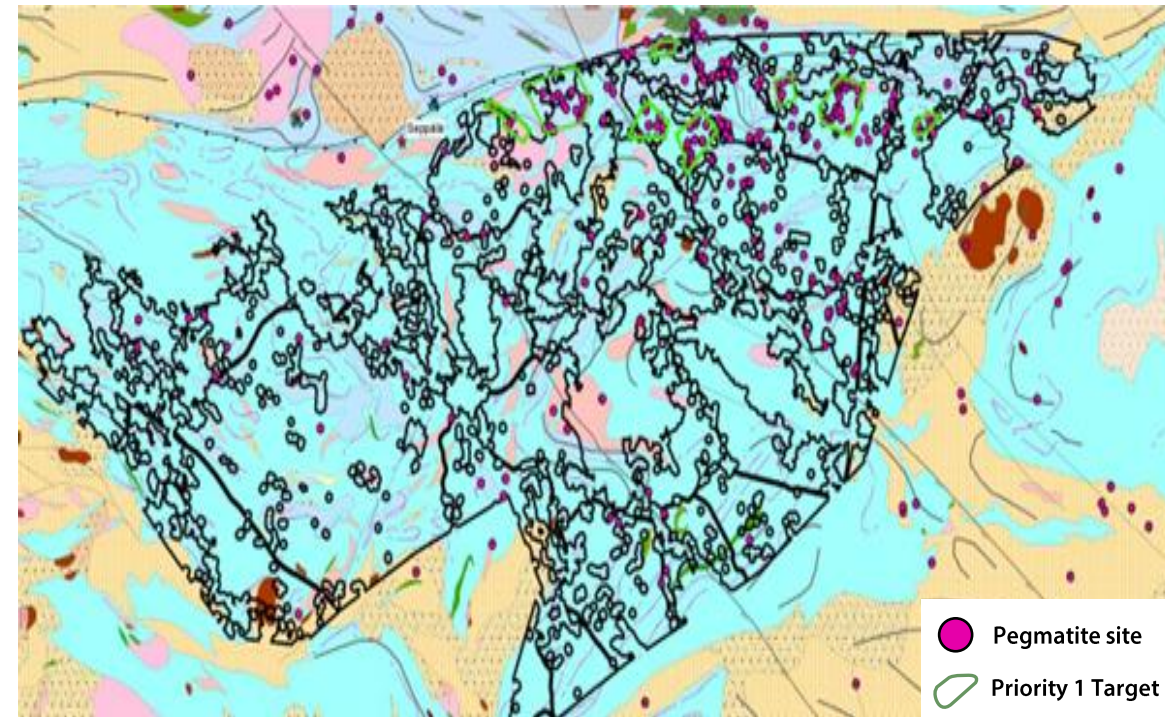


Figure 7: Mapped pegmatite sites and Priority 1 Targets of the Kova Reservation.

Kast Lithium (139km²)- Finland

- ✓ The Kast reservation is adjacent to, and geologically analogous to the Rosendal tantalum deposit, and sits within the Kemiö metallogenic area with a significant potential for lithium, tantalum and beryllium exploitation.
- ✓ Kast reservation is located within the Kimito suite supracrustal and is **prospective for mixed or 'hybrid' rare-element pegmatites which have REE signatures and are a mix between LCT pegmatites and NYF pegmatites NYF pegmatites**. These mixed pegmatites result from remelting of newly formed NYF pegmatites by metasomatic fluids rich in Li, B, Ca and Mg.



Forty-nine (49) pegmatite sites have been mapped within the project area.

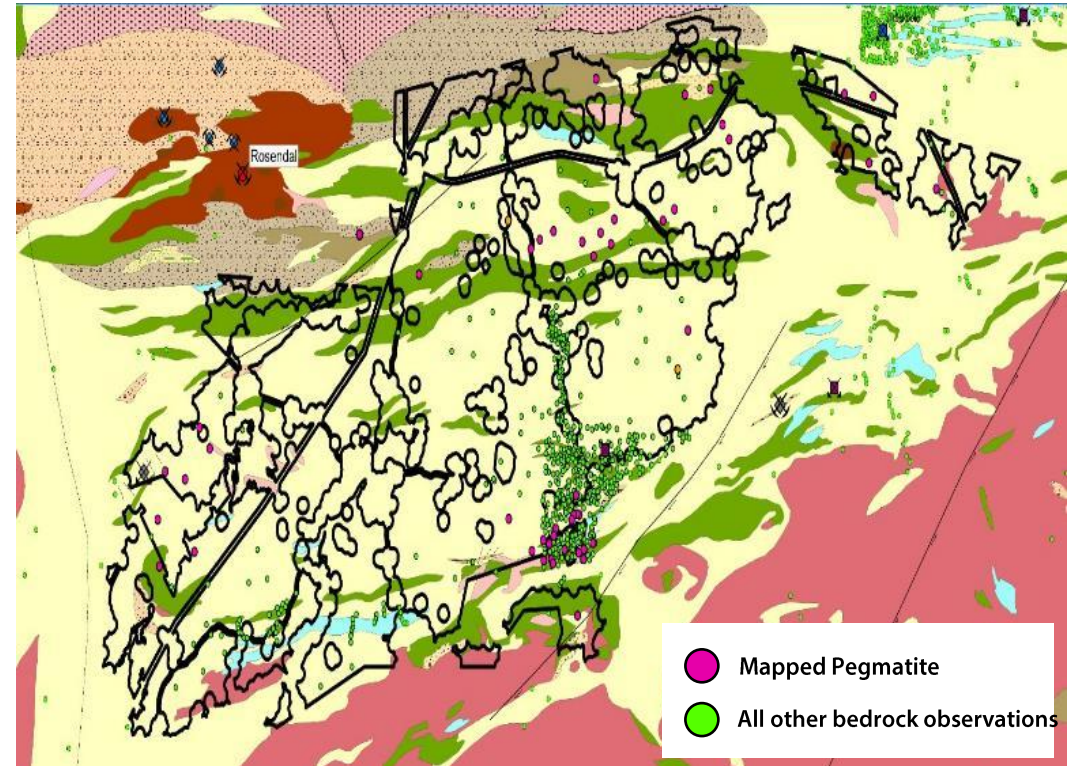


Figure 8: Documented observations of bedrock. Sources for bedrock rock type (GTK): bedrock observation database (licensed), rock geochemistry database (open license), and national petrophysical database (open license).

Kast Lithium – Exploration Program

- ✓ Pure has appointed highly experienced Finland based geological consultants Geopool to review data and conduct mapping and sampling activities at Kova.
- ✓ Geopool concluded the geological setting of the reservation area is favorable for LCT pegmatite formation involving late granitic plutonism into a low amphibolite facies supracrustal sequence. Metasediments are sheared and schistose, providing potential pathway horizons for pegmatite melts
- ✓ **Given the sheer area size of the reservations, Geopool's first focus is exploration work on the northern area approximately twenty-one (21) Tier 1 pegmatite targets.**



Exploration commenced 8 August 2023.

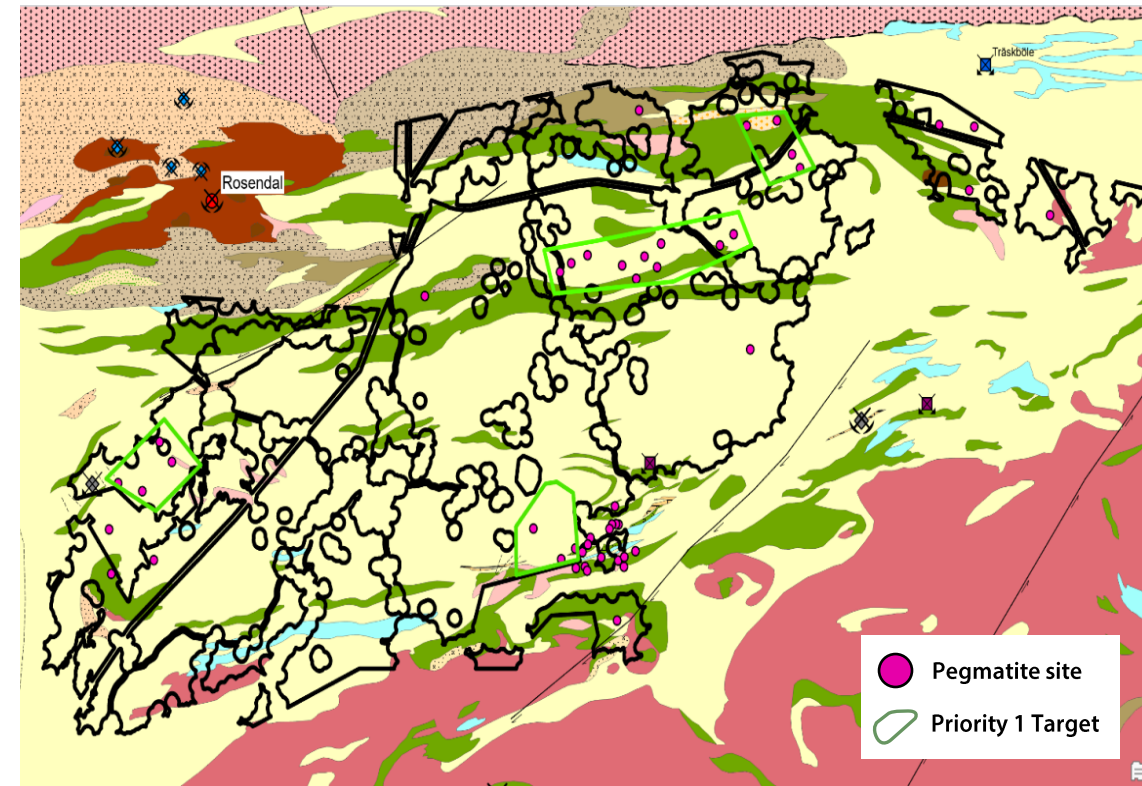


Figure 9: Mapped pegmatite sites and Priority 1 Targets of the Kast Reservation.

PURE RESOURCES

Sweden — Lithium

Sweden Lithium Projects

- ✓ PR1 Europe Pty Ltd (a wholly owned subsidiary of Pure) has been granted two Exploration Claims in central Sweden covering an area of ~252km², with the projects named Bergby nr 100 and Järkvissle nr 100.
- ✓ These claims are **highly prospective for LCT pegmatite deposits**, one sits either adjacent and along strike to one of Sweden's well known lithium deposits and the other adjacent to Sweden's latest shallow high-grade lithium spodumene discovery.
- ✓ The primary objective is to identify lithium-bearing pegmatites in both the Bergby nr 100 and Järkvissle nr 100 projects.



**Exploration activities commence
25 August 2023.**

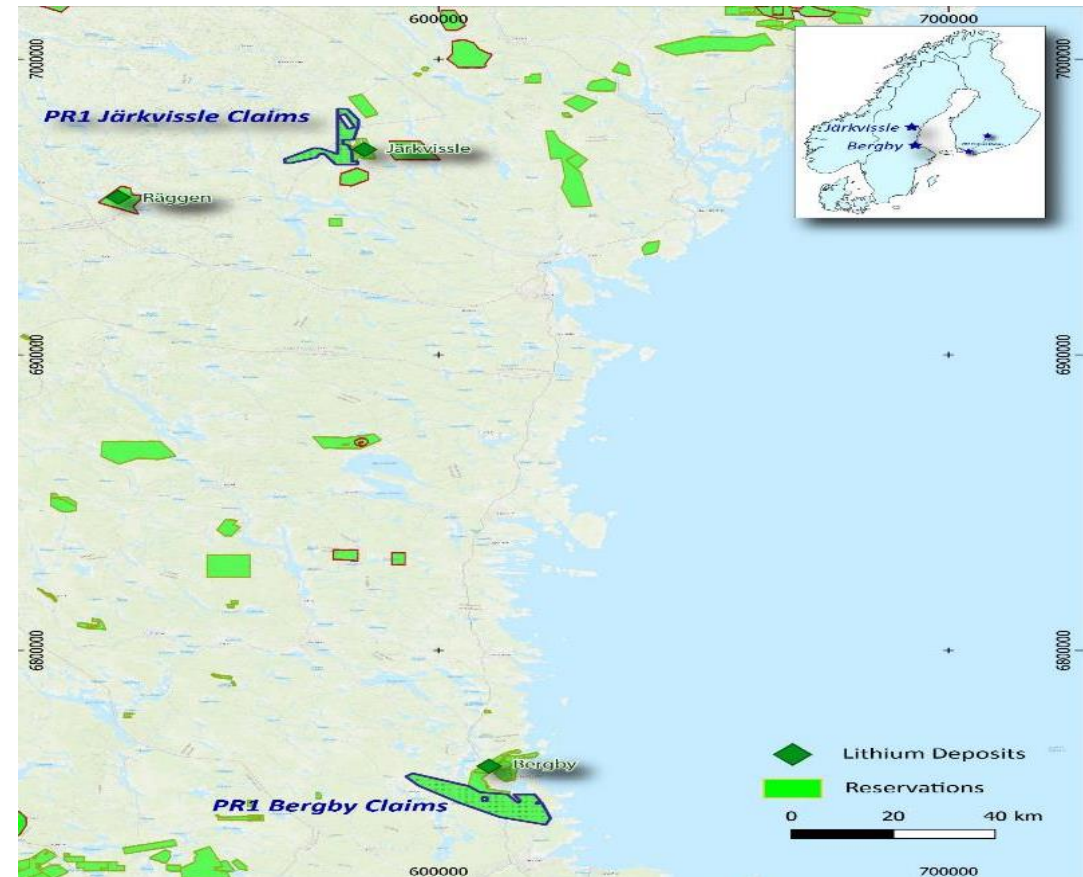


Figure 10: Location of the Bergby nr 100 and Järkvissle nr 100, Sweden.

Bergby nr 100 Lithium (174km²)– Sweden

- ✓ The Bergby nr 100 claims, covering an area of 174km², are a 100% owned and situated near the Gulf of Bothnia in central Sweden, a known hard rock lithium district.
- ✓ The Bergby area is known for its **abundance of LCT pegmatites** with mineral assemblages of spodumene, beryl, pollucite, and tourmaline.
- ✓ The Bergby nr 100 claims are strategically located adjacent to United Lithium Corp's (CSE: ULTH) Bergby Lithium Project, underlining the overall lithium potential in the region:
 - In January of 2021, United Lithium announced the discovery drillhole intersecting 47.75m @ 1.34% Li.
- ✓ **Excellent infrastructure** is readily available in the applied area, with a main highway E4 and a main railway line close by. The large port of Gävle at the Baltic Sea is located 30 km south of Bergby.

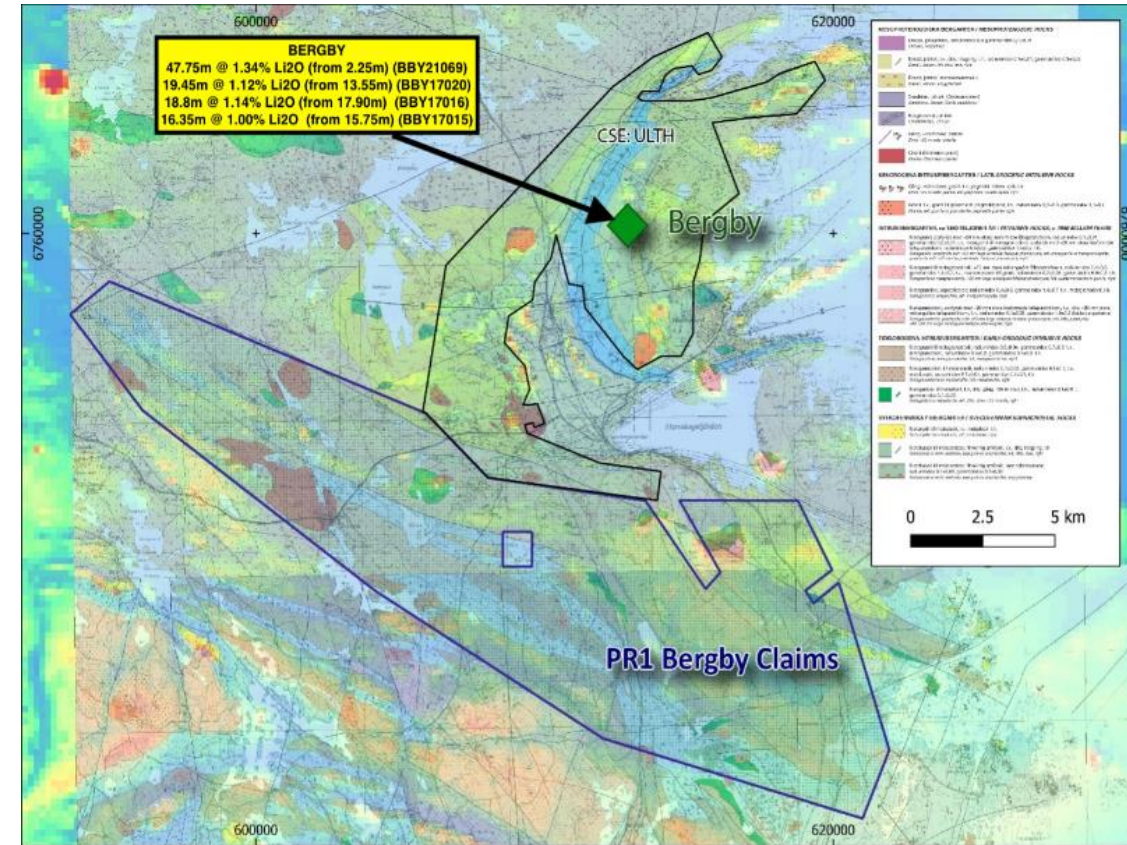


Figure 11: Geology of the Bergby nr 100 claims.

Järkvissle nr 100 Lithium (78km²) - Sweden

- ✓ The Järkvissle nr 100 claims cover an area of 78km² and are situated in the Västernorrland region, 65km Northwest of the Swedish East Coast town of Sundsvall.
- ✓ The region **hosts the country's largest Lithium deposits** and are adjacent to and along strike Sweden's most advanced Lithium deposit, the Järkvissle Pegmatite Sites, owned by Asera Mining AB.
- ✓ The Järkvissle nr 100 reservation overlies a high magnetic unit interpreted to be a band of mafic/ultramafic derived amphibolite that is host rock to potential LCT pegmatites.



The Company is negotiating the purchase of available drillhole, geochemical and geophysical data relevant to the two claim areas as part of its ongoing data review process.



Figure 12: Geology of Järkvissle nr 100 claims.

PURE RESOURCES

Australia — Nickel, Copper & Gold

A dark, atmospheric photograph of an underground mine tunnel. A large white truck is driving away from the viewer down the center of the tunnel. The tunnel walls are rough and rocky, with various pipes and cables running along them. The lighting is dim, with some bright spots from the truck's headlights and other lights in the distance, creating a sense of depth and scale.

Australian Projects – Nickel, Copper & Gold

Killarney

The Killarney Project comprises one tenement located about 140km north-east of the town of Halls Creek. Early-stage exploration including stream sediment, soil/auger and rock chip sampling has delineated anomalous nickel and copper mineralisation.

Mount Monger

Mount Monger is highly prospective for gold mineralisation with a proximity of 55km southeast of Kalgoorlie. Consists of pending exploration license E26/227 covering an area of ~12km²

Yandal

The Yandal Project consists of granted exploration license E53/2023 that covers an area of approximately 43 km², which is prospective for gold mineralisation, and is situated in the Archean aged Yandal Greenstone belt in the Eastern Goldfields region of Western Australia.

Yundamindra

The Yundamindra Project consists of the one granted and one tenement application E39/2254 & E39/2251 which collectively cover an area of approximately 90 km². The Yundamindra Project tenements sit in the Murrin and Linden Domains, in the eastern Kurnalpi Terrane of the Eastern Goldfields region of Western Australia.

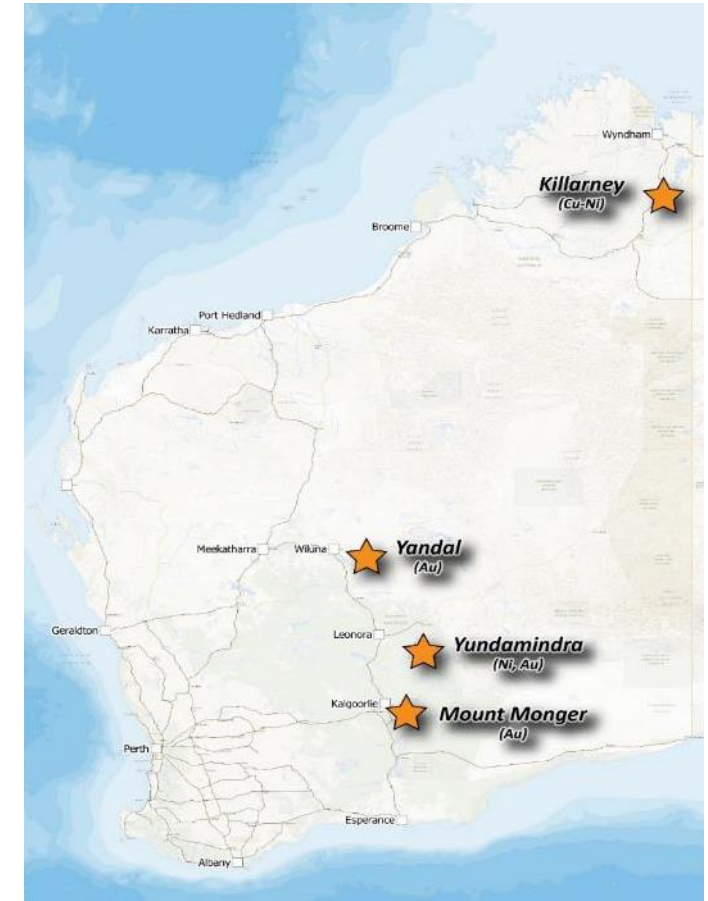


Figure 13: WA project sites.

PURE
RESOURCES

The Future is Clear

Perth

☎ +61 8 9388 0051

✉ info@pureresources.com.au

📍 22 Townsend Road , Subiaco WA 6008

pureresources.com.au