

# Tambourah

— Metals Ltd —

## Investor Presentation



ASX: TMB

[tambourahmetals.com.au](http://tambourahmetals.com.au)

August 2023



# Forward Looking Statements and Disclaimer

---

The information contained in this presentation is for informational purposes only and does not constitute an offer to issue, or arrange to issue, securities or other financial products. The information contained in this presentation is not investment or financial product advice and is not intended to be used as the basis for making an investment decision. The presentation has been prepared without taking into account the investment objectives, financial situation or particular needs of any particular person. Before making an investment decision, you should consider, with or without the assistance of a financial adviser, whether an investment is appropriate to your particular investment needs, objectives and financial circumstances.

No representation or warranty, express or implied, is made as to the fairness, accuracy, completeness or correctness of the information, opinions and conclusions contained in this presentation. To the maximum extent permitted by law, none of Tambourah Metals Ltd ("or the Company"), their directors, employees or agents, nor any other person accepts any liability, including, without limitation, any liability arising out of fault of negligence, for any loss arising from the use of the information contained in this presentation. In particular, no representation or warranty, express or implied is given as to the accuracy, completeness or correctness, likelihood of achievement or reasonableness or any forecasts, prospects or returns contained in this presentation nor is any obligation assumed to update such information. Such forecasts, prospects or returns are by their nature subject to significant uncertainties and contingencies.

The information in this Presentation that relates to Exploration Results and Mineral Resources has been extracted from the Company's Prospectus dated 25 June 2021 and lodged with the Australian Securities and Investments Commission (ASIC) (Prospectus). The Company confirms that it is not aware of any new information or data that materially affects the Exploration Results or Mineral Resources information included in the Prospectus. The Company confirms that the form and context in which the Competent Person's findings are presented have not been materially modified from the Prospectus. This Presentation has been approved by the Board.

## Forward Looking Statements

Forward-looking statements are statements that are not historical facts. Words such as "expect(s)", "feel(s)", "believe(s)", "will", "may", "anticipate(s)" and similar expressions are intended to identify forward looking statements. These statements include, but are not limited to statements regarding future production, resources or reserves and exploration results. All of such statements are subject to certain risks and uncertainties, many of which are difficult to predict and generally beyond the control of the Company, that could cause actual results to differ materially from those expressed in, or implied or projected by, the forward-looking information and statements. These risks and uncertainties include, but are not limited to:

- i. those relating to the interpretation of drill results, the geology, grade and continuity of mineral deposits and conclusions of economic evaluations;
- ii. risks relating to possible variations in reserves, grade, planned mining dilution and ore loss, or recovery rates and changes in project parameters as plans continue to be refined;
- iii. the potential for delays in exploration or development activities or the completion of feasibility studies;
- iv. risks related to commodity price and foreign exchange rate fluctuations;
- v. risks related to failure to obtain adequate financing on a timely basis and on acceptable terms, or delays in obtaining governmental approvals or in the completion of development or construction activities; and
- vi. other risks and uncertainties related to the Company's prospects, properties and business strategy. Prospective investors in the Company are cautioned not to place undue reliance on these forward-looking statements that speak only as of the date hereof, and the Company not undertake any obligation to revise and disseminate forward looking statements to reflect events or circumstances after the date hereof, or to reflect the occurrence of or non-occurrence of any events.

## Competent Person Statement

The information in this report that relates to Exploration Results is based on information compiled by Mr Ralf Kriege exploration manager of the company, who is a Member of The Australasian Institute of Mining and Metallurgy. Mr Ralf Kriege has sufficient experience which is relevant to the style of mineralisation and type of deposits under consideration and to the activity which he is undertaking to qualify as a Competent Person as defined in the 2012 Edition of the 'Australasian Code for Reporting of Exploration Results, Mineral Resources and Ore Reserves'. Mr Ralf Kriege consents to the inclusion in the report of the matters based on his information in the form and context in which it appears.

Authorised by the Board of Tambourah Metals Ltd.

# Lithium Exploration in Western Australia



# Introduction

---



**Highly prospective landholding in tier-1 jurisdiction of Western Australia**



**Focused on discovering future facing commodities for the decarbonisation revolution**



**Advancing Lithium exploration in the Pilbara with additional projects**



**New Board members and management to accelerate exploration programs**



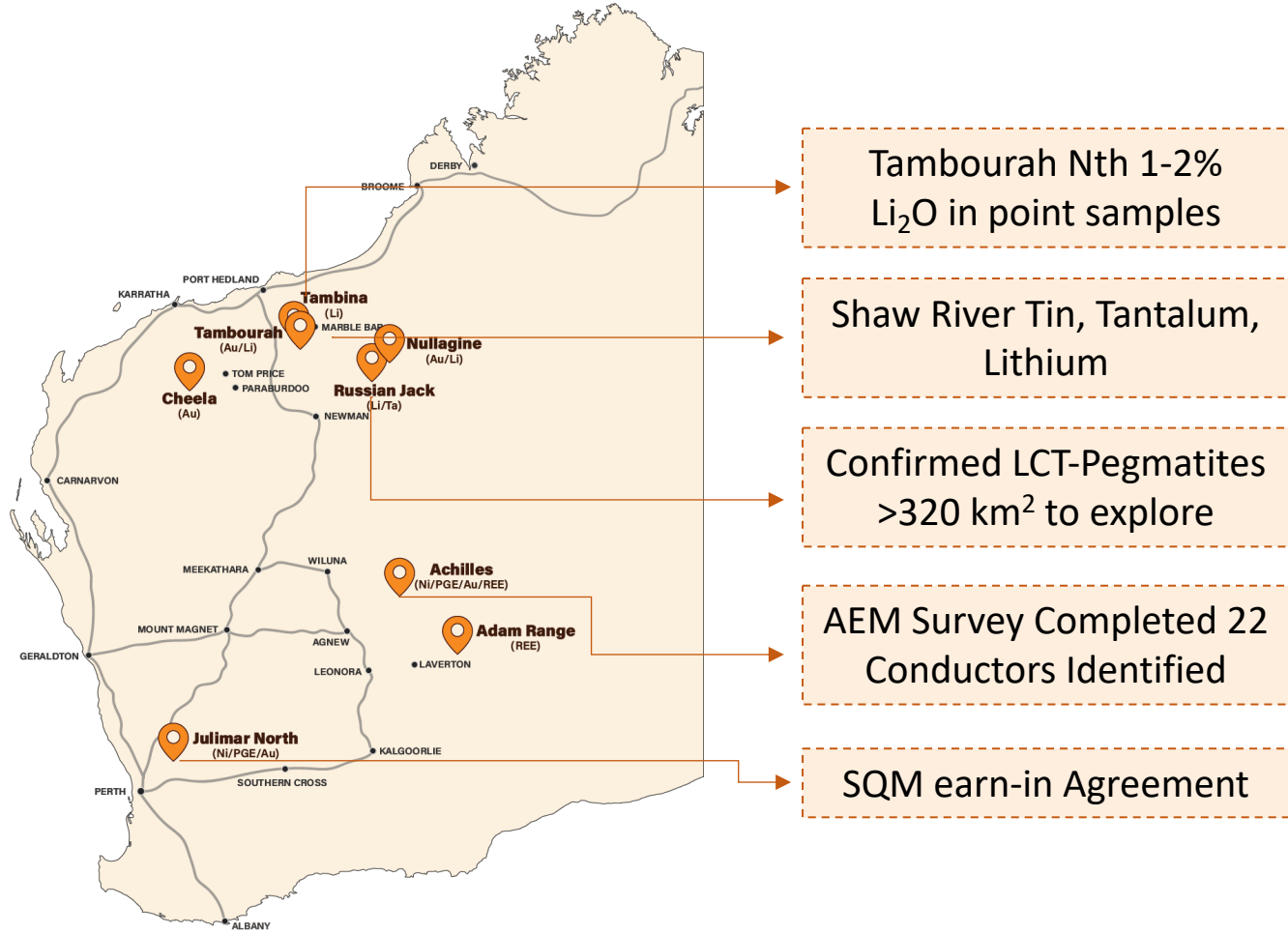
**Strong stakeholder relationships and ESG credentials**



# Advanced Exploration Portfolio

## Exploration Highlights

- ✓ Current exploration focus is progressing Pilbara Lithium targets – all projects 100% TMB owned
- ✓ New LCT-pegmatites identified at Tambourah & Russian Jack Projects
- ✓ CSIRO collaboration, assessing Lithium pegmatites at Russian Jack Project
- ✓ Developing 6 new Lithium projects in the Pilbara Region of Western Australia
- ✓ 22 conductors to be drilled at Achilles for Nickel Sulphide targets
- ✓ Julimar Nth new Earn-In with SQM (Chile)



# Pilbara Projects



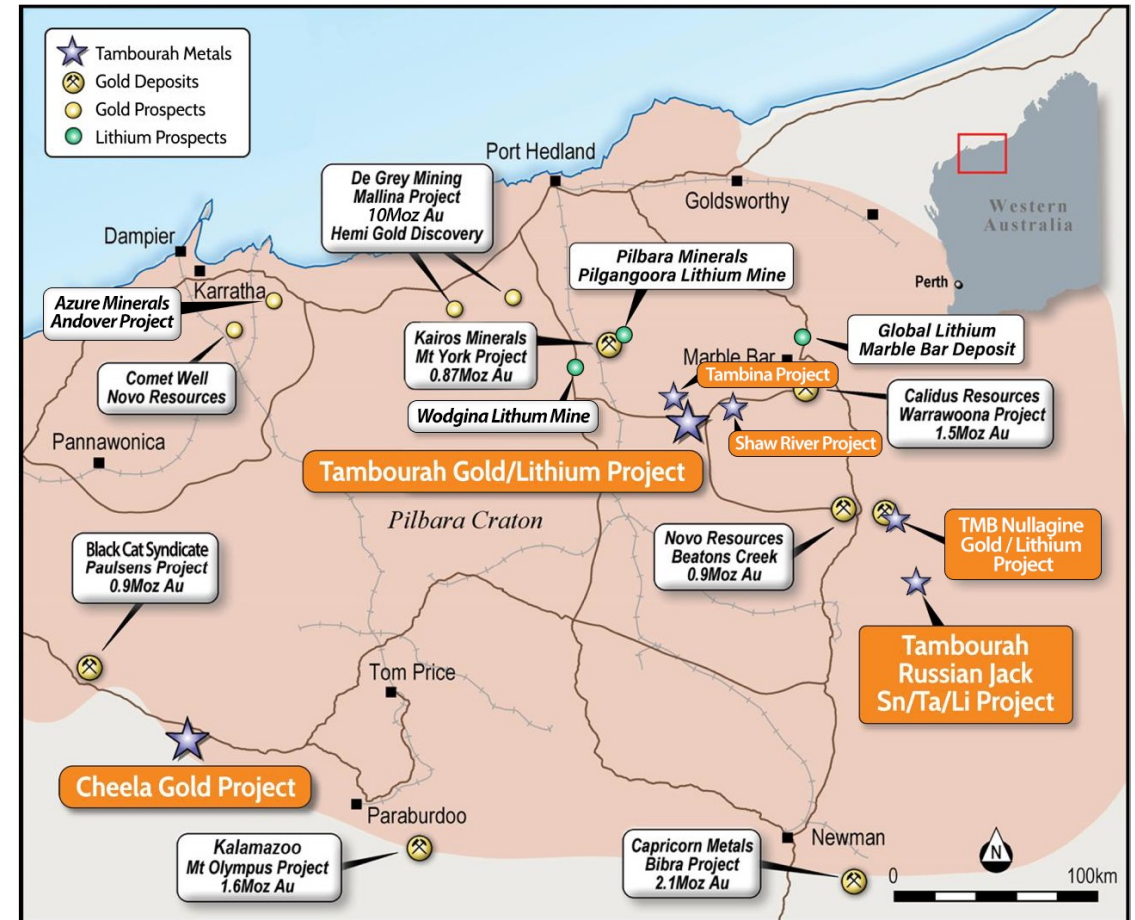


# Pilbara Region of Western Australia

## Tambourah Metals Major Projects

Russian Jack	➔	Lithium
Nullagine	➔	Lithium-Gold
Tambourah / Tambina	➔	Lithium-Gold
Cheela	➔	Gold
Haystack Well	➔	Lithium-Tantalum
Shaw River	➔	Tin-Tantalum-Lithium

## Tambourah Project Locations – Pilbara Region



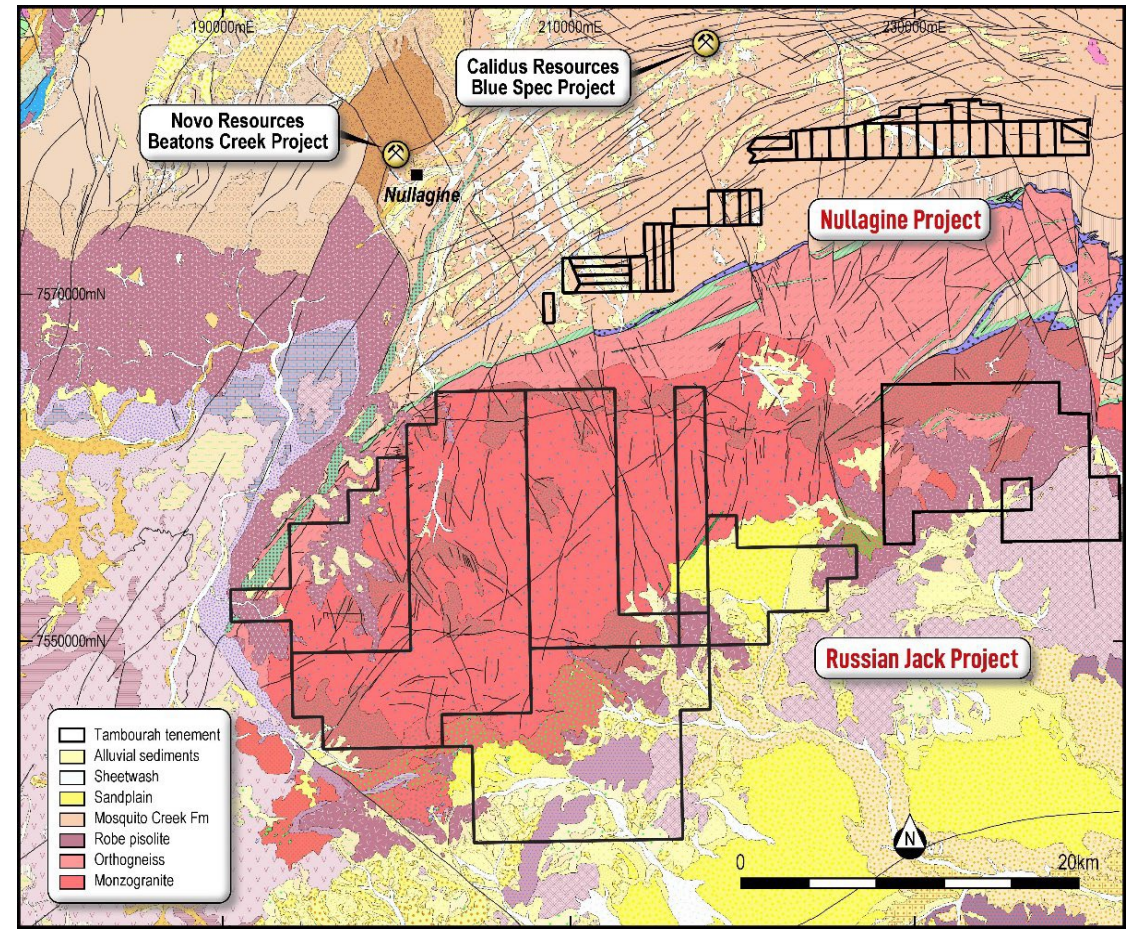
# Russian Jack Lithium Project

- Russian Jack is located the in eastern portion of the Archean Pilbara craton, 20 Km South of Nullagine
- Lithium bearing pegmatites identified at Russian Jack are very similar in appearance to the Brockman pegmatite, which hosts the Archer Lithium deposit of Global Lithium Resources(ASX : GL1)
- Rock chip sampling from pegmatite outcropping had the following results:

Sample ID	Easting	Northing	Li (ppm)	Rb (ppm)
RJRK001	202338	7564268	455	1930
RJRK002	202346	7564245	571	1390
RJRK003	202417	7564199	169	1570
RJRK004	202421	7564173	1420	1840
RJRK005	202446	7564114	244	618
RJRK006	202254	7564417	123	656
RJRK007	202373	7564431	49.6	452

1. ASX Announcement: Expanding Lithium Projects at Russian Jack 2/09/2022

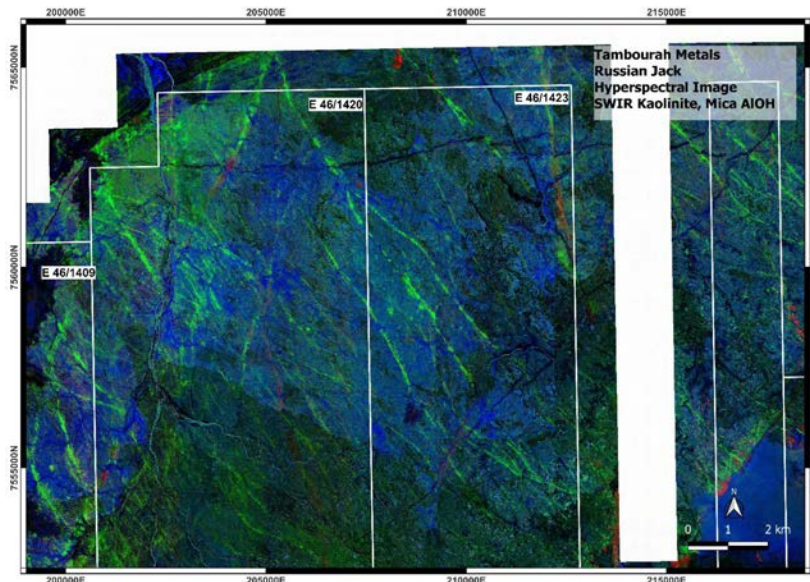
## Nullagine & Russian Jack – Tenements and Geology





# CSIRO Collaboration at Russian Jack Lithium Project

- CSIRO collaboration with Tambourah has commenced<sup>1</sup>
- Applying “Machine Learning” to highlight possible priority LCT pegmatite targets
- Research will provide a pathway to access large areas with little or no exploration to date
- Tambourah Metals Ltd has been awarded a CSIRO “Kick-Start” financial grant
- CSIRO have provided a preliminary draft of priority target areas for sampling and field mapping. Ensuing meetings to discuss Tambourah’s remotely sensed spectral and historic data, including radiometric, magnetic and gravity datasets are progressing



Russian Jack hyperspectral overview image<sup>1</sup>



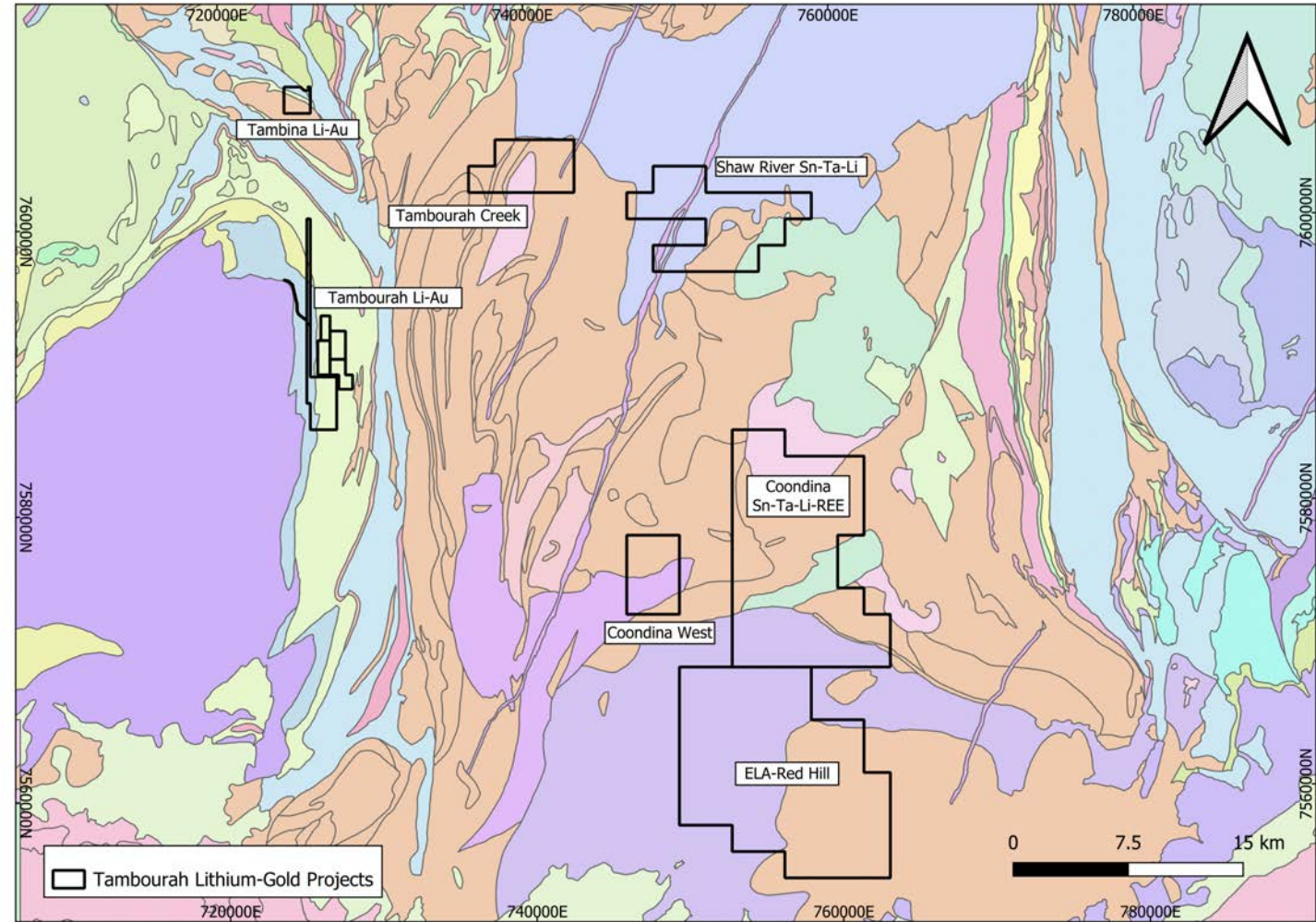
Rock Chip sample RJRK101<sup>2</sup>

1. ASX Announcement: Tambourah Metals Enters CSIRO Collaboration at Russian Jack Lithium Project 16/03/2023  
2. ASX Announcement: Multiple pegmatites confirmed at the RJ 101 Lithium project 14/11/2022

# Tambourah Gold and Critical Minerals (Tin, Tantalum & Lithium)

## Exploration Project Summary:

- **Tambourah Creek and Shaw River Projects:**
  - ✓ Extensive Tin and Tantalum - historic mines and prospects
  - ✓ Sampling, mapping and drill targets identified in outcropping pegmatites – for pending field activities – Scheduled for September 2023
  - ✓ Recent pegmatite sampling completed - results pending
- **Tambourah North lithium Project** has identified drill targets, with field work scheduled to commence shortly
- **Coondina Project** - drill targets identified following previous works' reviews - including Rare Earth Element (REE's) potential
  - ✓ Field work being scheduled
  - ✓ Drill plan in progress

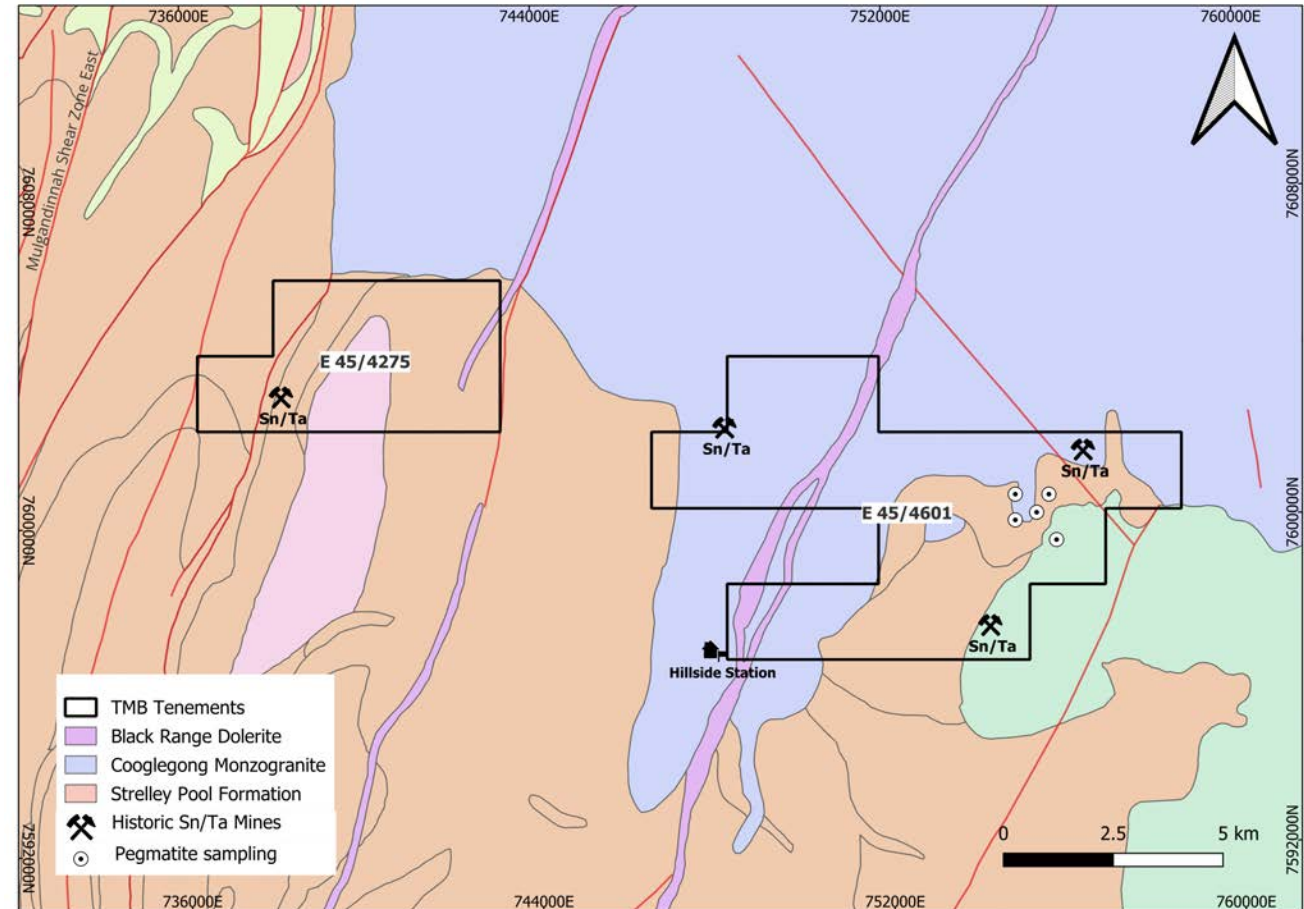


Location of New Tambourah Lithium - Gold Projects



# Shaw River Project - Tin – Tantalum - Lithium

- Tambourah has commenced data compilation including review and mapping of extensive Tin(Sn) –Tantalum (Ta) tailings dumps
- Field work will include systematic sampling of the previous mine dumps for Sn-Ta-Li, results pending
- Extensive Tin mining occurred during the 1950s to 1970s at Shaw River
  - This area has never been drill tested for the primary source of the Sn-Ta-Li
- The mine tailings at Talison Lithium Greenbushes project are currently being processed for spodumene concentrate<sup>1</sup>



Map of historic Sn/Ta Mines at Shaw River

1. [www.talisonlithium.com](http://www.talisonlithium.com)



# Shaw River Project - Tin – Tantalum - Lithium



Shaw River Sample



Shaw River Tailings

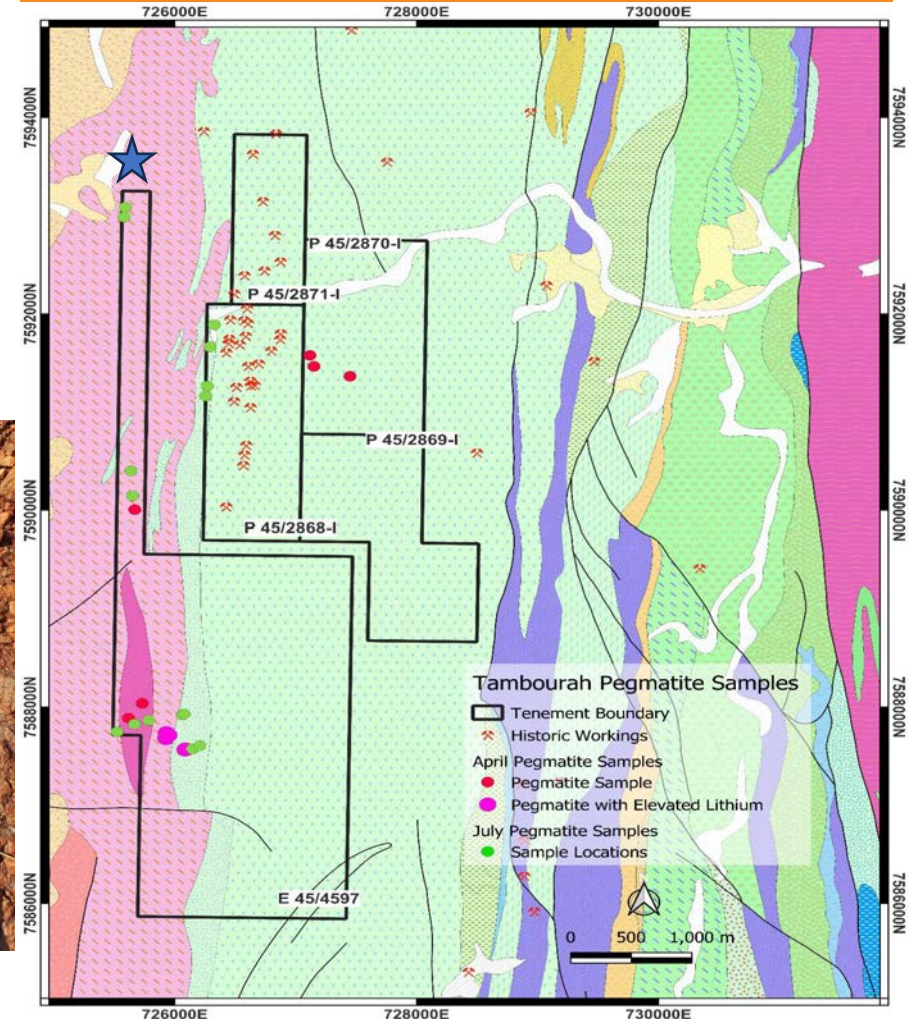


# Tambourah Lithium Exploration

- “Tambourah has capitalised on a significant opportunity presented by Minrex Resources Ltd (ASX: MRR) to rapidly advance their Lithium projects in scale and quality with the addition of the new exploration projects.”<sup>1</sup>
- New Lithium projects have highly anomalous values:
  - ✓ 2.56% Li<sub>2</sub>O, 105 ppm Cs, 80 ppm Ta, 40 ppm Nb, 100 ppm Sn, 1,293 ppm Rb<sup>1</sup> ★
  - ✓ 1.91% Li<sub>2</sub>O, 518 ppm Cs, 370 ppm Ta, 150 ppm Nb, 2,542 ppm Rb<sup>1</sup>
  - ✓ New MRR ground has identified anomalous values at Tambourah Nth project<sup>1</sup>



## Tambourah Pegmatites – Sample Locations



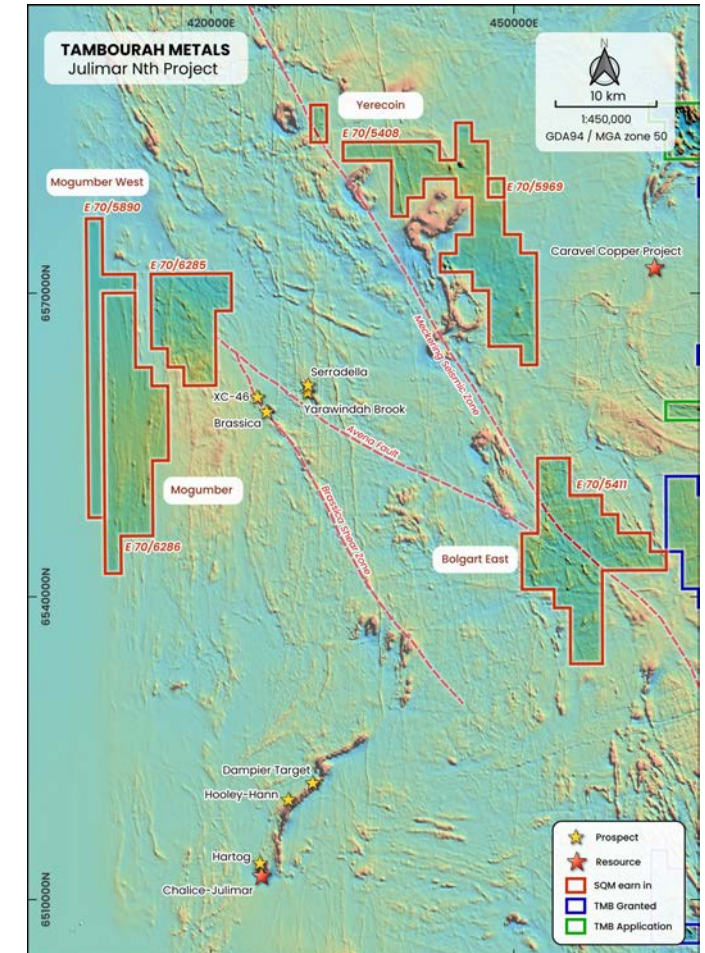
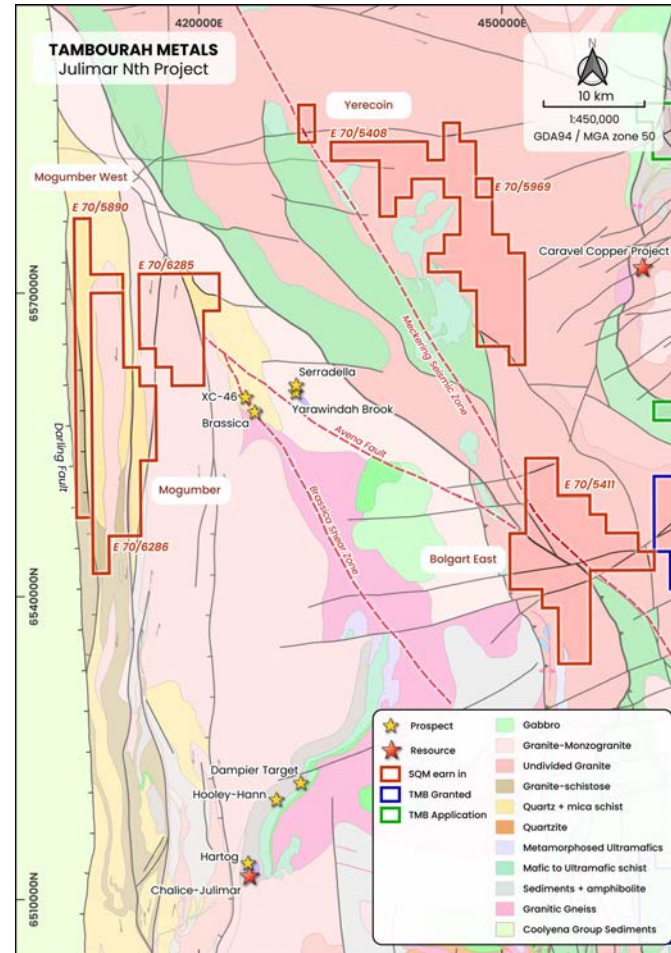
1. ASX Announcement: Tambourah Completes Acquisition of Pilbara Projects 3/07/2023



# Tambourah Metals Earn-In with SQM

## Overview

- Tambourah Metals and the Chilean lithium producer Sociedad Quimica y Minera de Chile S.A. (SQM) (NYSE: SQM) have entered into an agreement providing SQM with the right to earn-in across six of Tambourah's Julimar Nth projects in Western Australia
- SQM will earn an initial 50% interest (and can earn a maximum of 70%) in all mineral rights at Julimar Nth project by sole funding a minimum of A\$1.5m and up to \$3m of exploration and development activities
- SQM is one of the world's leading lithium producers with its main assets in Australia being its 50% joint venture interest in the Mt. Holland Lithium Mine as well as other lithium related investments
- Tambourah Metals will continue to explore and develop the WH Sth project in the Julimar region



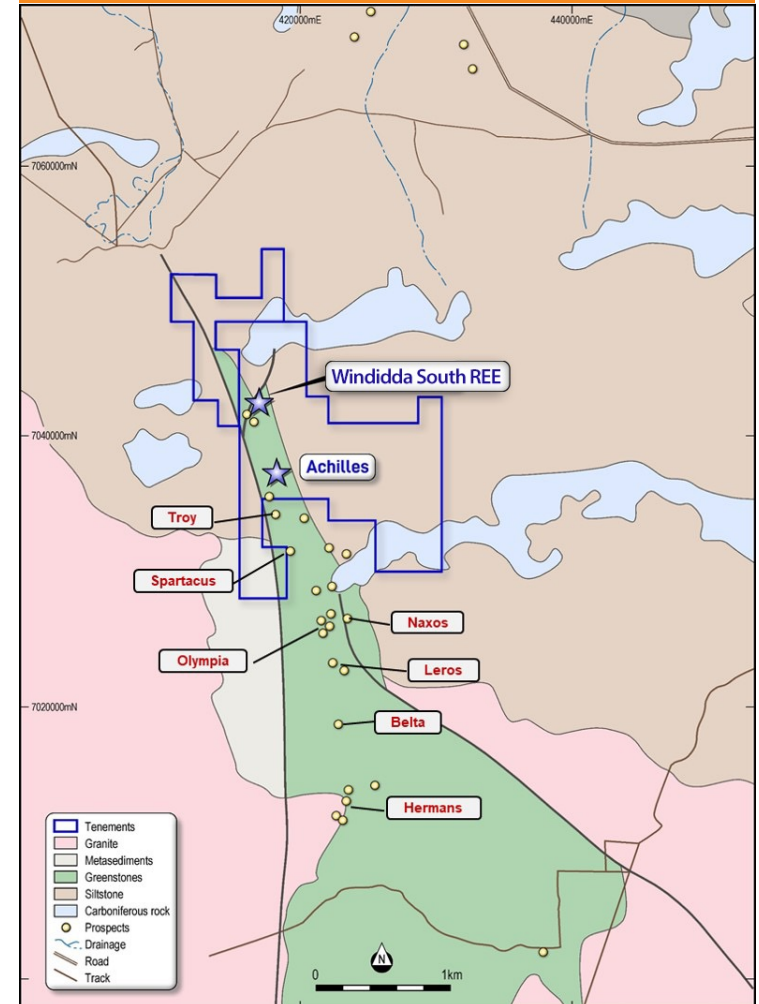


# Achilles Ni/PGE/Au/REE

- Unlocking a new district scale Nickel sulphide region
- The Achilles Ni-PGE-Cu project is located 235km north of Laverton and 200km east of Wiluna WA
- 10km's North of Olympia Nickel deposit of Cannon Resources with 573 kt @ Ni -1.63% & Cu - 1.19% & PGE's<sup>1</sup>
- The prospective ultramafic geology extends for a strike length of 20km within the Tambourah Metals project area
- Exploration program will focus on developing the drill targets identified in the recent AEM surveys
- 22 Discrete Conductors identified at Achilles
- Compilation of the historic drill hole locations shows that none of these 22 conductors have been drill tested within the historic drilling

1. <https://cannonres.com.au/projects/collurabbie-project/>

Achilles Project location map



# Company Overview & Future Programs





# Corporate Overview

## Corporate Snapshot

Share Price (22/08/2023)	\$0.20
Share Capital (ASX:TMB)	80.4m
Unlisted Options (25c, 30c)	14.0m
Market Capitalisation <sup>1</sup>	\$16.1m
Cash <sup>1</sup>	\$3.2m
Debt	Nil
Enterprise Value	\$12.9m

1. Cash on hand as at 19/07/2023

## Share Price - 1<sup>st</sup> Oct 2022 – 21<sup>st</sup> Aug 2023



## Major Shareholders

Rita Brooks (Chairperson)	31.5 %
---------------------------	--------

# Board and Management



**Rita Brooks**  
Executive Chairperson  
BA(Ed)

- 30+ years' experience in minerals exploration industry
- Founding Director of gold and nickel explorer Berkeley Resources Ltd
- Director of several private companies and extensive experience across mineral exploration throughout Australia



**Wayne Richards**  
Non-Executive Director  
GAICD, BSc

- 30+ years' experience of study execution, project development, mining, mineral processing and corporate financing experience.
- Extensive Lithium exploration and project development knowledge.
- Previously Managing Director and Chief Executive Officer of Burley Minerals Ltd, and Executive Chairman and CEO of Tawana Resources.



**Peter Batten**  
Non-Executive Director  
BAppSc(Geol), BappSc, MAusIMIM

- 30+ years' experience in developing mineral resources as a geologist, mine manager and consultant
- Global experience spanning Australia, Africa, Asia, Europe and USA
- Instrumental in the discovery of the porphyry copper and gold deposit in North Bougainville as a Director of MCB Resources Ltd



**Chris Ramsay**  
Non-Executive Director  
MPM, BSc, MAusIMM

- Geologist and project manager with over 25+ years' experience in the private and consulting sectors of the global mining industry
- Previously spent 18 years with Oceana Gold, Sons of Gwalia and Straits Resources



**Graeme Smith**  
Company Secretary  
MBA, MComLaw, FCPA, FCG (CS, CGP),  
MAusIMM

- 30+ years' experience in the accounting and company administration industry
- Extensive experience in similar roles and is Principal of Wembley Corporate Services
- Currently serving as a Non-Executive Director of Augustus Minerals Ltd



**Ralf Kriege**  
Chief Executive Officer  
MBA, MSc, MAusIMM

- 20+ years' experience in gold, base metals, iron ore, lithium exploration, and project development in Australia, Africa and South America
- Highly credentialed geologist having held senior positions at Liatam, API, Global Advanced Metals



# Upcoming Work

	August	September	October
<b>Lithium</b>			
- Russian Jack		Permitting	Review new ELs and geophysical survey
- Sampling Result	Mapping & Sampling	Drill Target development	Permitting Proposed Drill Program
- CSIRO	CSIRO review Drill Program	1st Review Data Interpretation and field work	
- Nullagine Li/Au			Hyperspectral Data Comp Field work
- Tambourah Li/Au		Earth Works RC Drilling	Mining Lease Applications
- Shaw River	Permitting	Sampling & Assay Results Maiden Drill Program	
<b>Nickel</b>			
- Achilles		AEM interpretation	EM Survey Drill Program
- WH S <sup>th</sup>			Field work Soil sampling
<b>Gold</b>			
- Cheela		Permitting	Sampling and drill target program

# Investment Summary



## Key Fundamentals

- Experienced Board and management
- Strong business strategy to contribute to a growing demand for renewable energy
- Developing advanced gold mining projects in Tier 1 mining regions
- ESG principals



## Pilbara Gold

- >10 Million ounces of gold has been discovered in the last 10 years in the Pilbara
- Three Gold Projects in the Pilbara Region Tambourah, Cheela and Nullagine
- Positive results from maiden drilling program completed at Tambourah Gold



## Critical Minerals

- Six Lithium Projects in the Pilbara Region, which hosts two Tier 1 world class lithium mines
- Two exciting Ni PGE Cu Au projects at Julimar North and Achilles in the NE Goldfields
- Exploration Rare Earth Elements (REE) at Achilles and Adam Range




# Tambourah


— Metals Ltd —

ASX:TMB

---

[Tambourahmetals.com.au](http://Tambourahmetals.com.au)

 [linkedin.com/company/tambourahmetals](https://www.linkedin.com/company/tambourahmetals)

 [twitter.com/Tambourah](https://twitter.com/Tambourah)

## CONTACT US

For more information please contact:

**Rita Brooks** | Exec Chairperson  
[Rita.Brooks@tambourahmetals.com.au](mailto:Rita.Brooks@tambourahmetals.com.au)  
M: +61 411 276 657

**Ralf Kriege** | CEO  
[Ralf.Kriege@tambourahmetals.com.au](mailto:Ralf.Kriege@tambourahmetals.com.au)  
M: +61 458 022 509

**Admin** | Head Office  
[admin@tambourahmetals.com.au](mailto:admin@tambourahmetals.com.au)  
+61 8 9481 8669