

Australian Gold Conference

29 - 30 August 2023



ASX code : HMG

Disclaimer and compliance statement

This presentation has been prepared by Hamelin Gold Limited ("Hamelin"). The information contained in this presentation is a professional opinion only and is given in good faith. Certain information in this document has been derived from third parties and though Hamelin has no reason to believe that it is not accurate, reliable or complete, it has not been independently audited or verified by Hamelin.

Any forward-looking statements included in this document involve subjective judgement and analysis and are subject to uncertainties, risks and contingencies, many of which are outside the control of, and maybe unknown to Hamelin. In particular, they speak only as of the date of this document, they assume the success of Hamelin's strategies, and they are subject to significant regulatory, business, competitive and economic uncertainties and risks. Actual future events may vary materially from the forward looking statements and the assumptions on which the forward looking statements are based. Recipients of this document ("Recipients") are cautioned to not place undue reliance on such forward-looking statements.

Hamelin makes no representation or warranty as to the accuracy, reliability or completeness of information in this document and does not take responsibility for updating any information or correcting any error or omission which may become apparent after this document has been issued.

To the extent permitted by law, Hamelin and its officers, employees, related bodies corporate and agents ("Agents") disclaim all liability, direct, indirect or consequential (and whether or not arising out of the negligence, default or lack of care of Hamelin and/or any of its Agents) for any loss or damage suffered by a Recipient or other persons arising out of, or in connection with, any use or reliance on this presentation or information.

The information in this report that relates to Exploration Results is based on information compiled by Mr. Peter Bewick who is a Member of the Australasian Institute of Mining and Metallurgy. Mr. Bewick hold shares and options in Hamelin. He is a full time employee of Hamelin, and has sufficient experience which is relevant to the style of mineralisation under consideration to qualify as a Competent Person as defined in the 2012 Edition of the 'Australian Code for Reporting of Exploration Results, Mineral Resources and Ore Reserves'. Mr Bewick consents to the inclusion in the report of the matters based on the information compiled by him, in the form and context in which it appears.

Hamelin confirms that it is not aware of any new information or data that materially affects the information in the relevant ASX releases and the form and context of the announcement has not materially changed. Hamelin confirms that the form and context in which the Competent Person's findings are presented have not been materially modified from the original market announcements.

The 'Newmont Tanami Operations AGES Paper 20 March 2018' referred to in this presentation is Schneider S., Perazzo S., Griesel L., Robinson C. 2018 Tanami Operations, Callie mine: Multiple new discoveries supporting transformational growth in a mature mining camp. NTGS AGES conference paper 2018, and can be found at:

https://geoscience.nt.gov.au/gemis/ntgsjspui/bitstream/1/87086/4/SchneiderAGES2018_paper.pdf

This announcement has been approved for release by the Board of Hamelin.





Introduction

- ~2,500km² belt scale project in the Tanami Province, Western Australia
- Under-explored belt in a Tier 1 gold province also prospective for REE and Ni-Cu-PGE deposits
- Located 100km west of the Giant Callie Gold deposit owned by Newmont
- Geological, geochemical and structural learnings deliver multiple new camp scale targets
- New high grade gold mineralisation discovered at Sultan
- Ni-Cu-PGE mineralisation identified within the Hawkeye intrusion
- \$7.7M in cash as at 30 June 2023

Hamelin Gold

Directors, Key Management and capital structure



Mr Will Robinson
Non Executive Chairman

B.Comm, MAusIMM

- Managing Director of Encounter Resources Ltd
- Non-Executive Director of Hampton Hill Mining
- Former President of the Association of Mining and Exploration Companies (AMEC)



Mr Peter Bewick
Managing Director

B.Eng (Hons), MAusIMM

- Geologist with over 30 years industry experience
- Former Exploration Director of Encounter Resources (2005-2021)
- Non-Executive Director of Encounter Resources and Mincor Resources



Mr Justin Osborne
Non Executive Director

B.Sc (Hons), FAusIMM, MAICD

- Former Exploration Manager (2013-14) and Executive Director (2015-21) of Gold Road Resources
- Previous 10 years at Gold Fields in senior exploration and development strategy roles
- Non-Executive Chairman of Matador Mining and Non-Executive Director of IGO Group and Astral Resources



Mr Philip Crutchfield
Non Executive Director

B.Comm., LL.B (Hons), LL.M LSE

- Current Non-Executive Director of Encounter Resources, Dreadnought Resources and Black Cat Syndicate
- Former Chairman of Zip Co (2015-21)
- Board member of the Victorian Bar Foundation and Melbourne Law School Foundation



Mr Clayton Davys
Exploration Manager

B.Sc (Hons)

- Geologist with over 25 years industry experience
- Former Exploration Manager of Gold Road Resources and Pioneer Resources

CAPITAL STRUCTURE

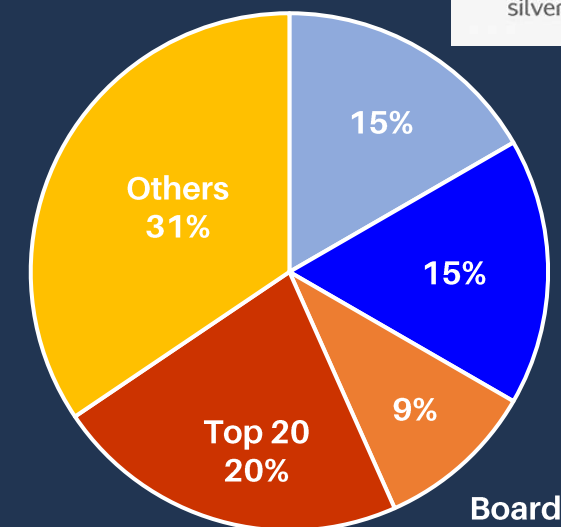
Shares on Issue 157.5M

Director, ESOP and broker options 11.6M

Market capitalisation (@9.0c) \$14.2m

Cash (30/06/2023) \$7.7M

Enterprise value \$6.5M

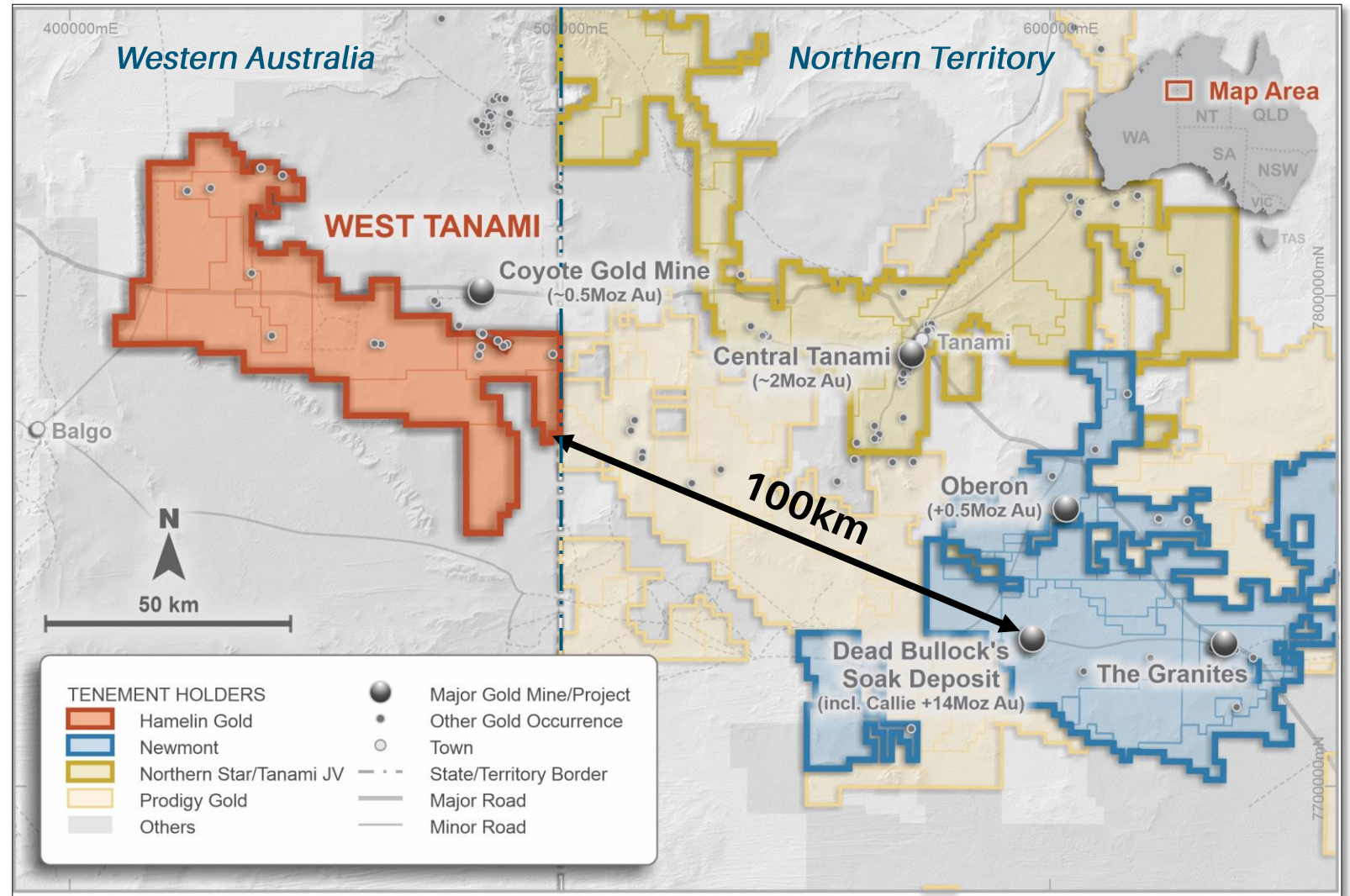


West Tanami: A Belt Scale Project in a Tier 1 Goldfield

The Tanami ... host to Newmont's Giant **Callie Gold system**

+25Moz discovered in the NT with <1Moz in WA

WA... same geology, same key structures, **but largely underexplored**



Newmont's DBS Gold Complex (+14Moz)

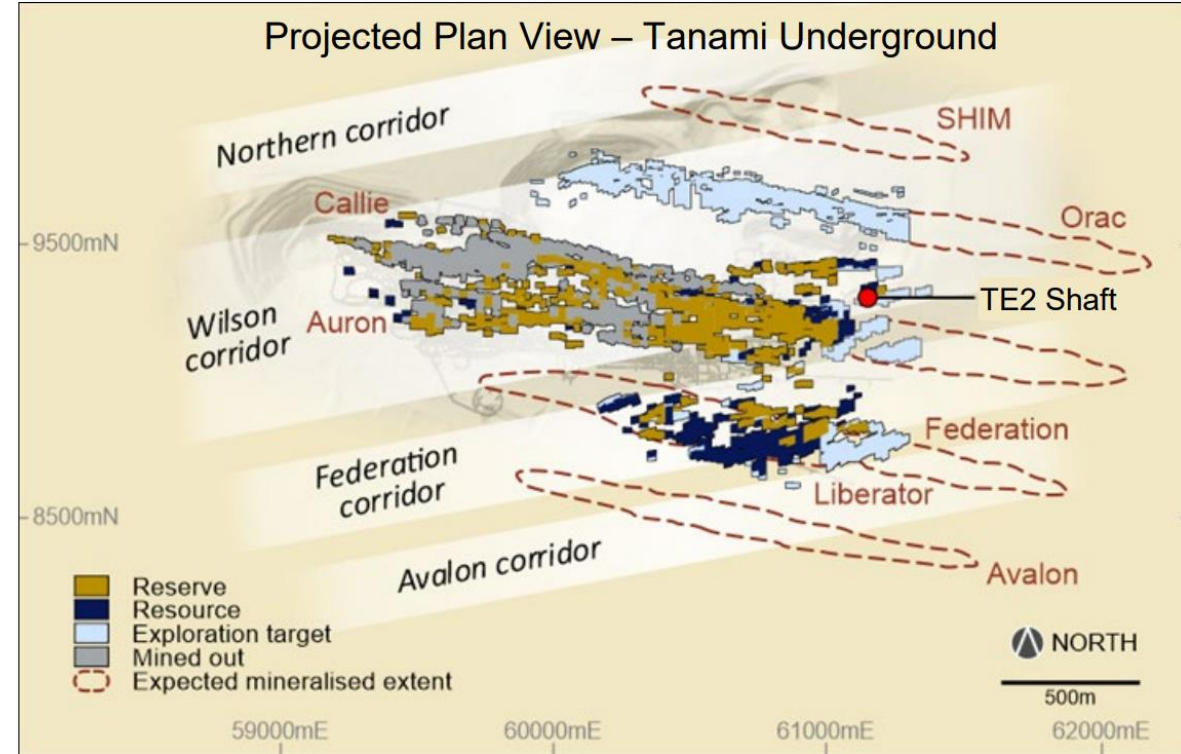
500,000oz pa expanding to 700,000oz pa

Geochemical Footprint



2.5km by 1km gold anomaly (100ppb Au) in shallow drilling

Structural and Geological Architecture



Plan view of Tanami Underground Deposits

Target Generation : Prediction and Detection

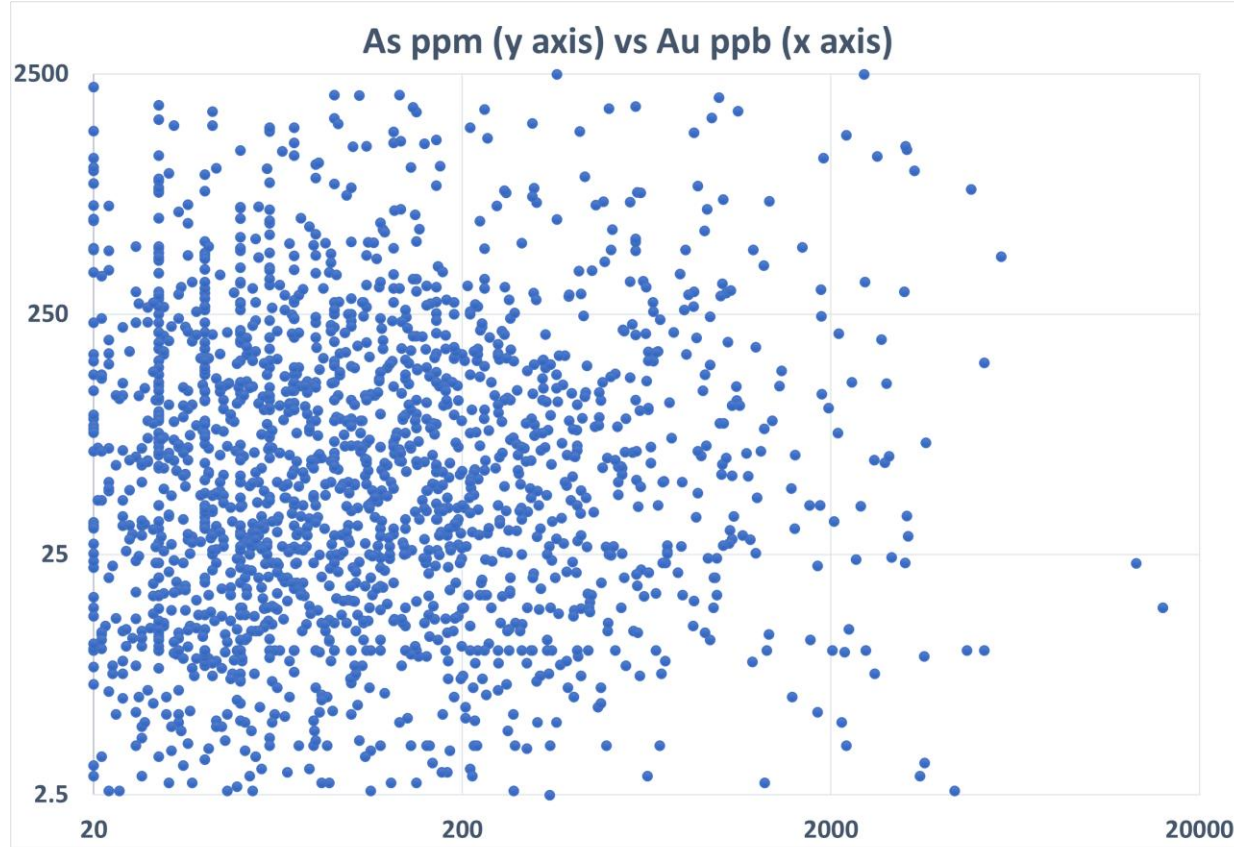
*New Geophysical Datasets : Airborne
EM, gravity and magnetics*



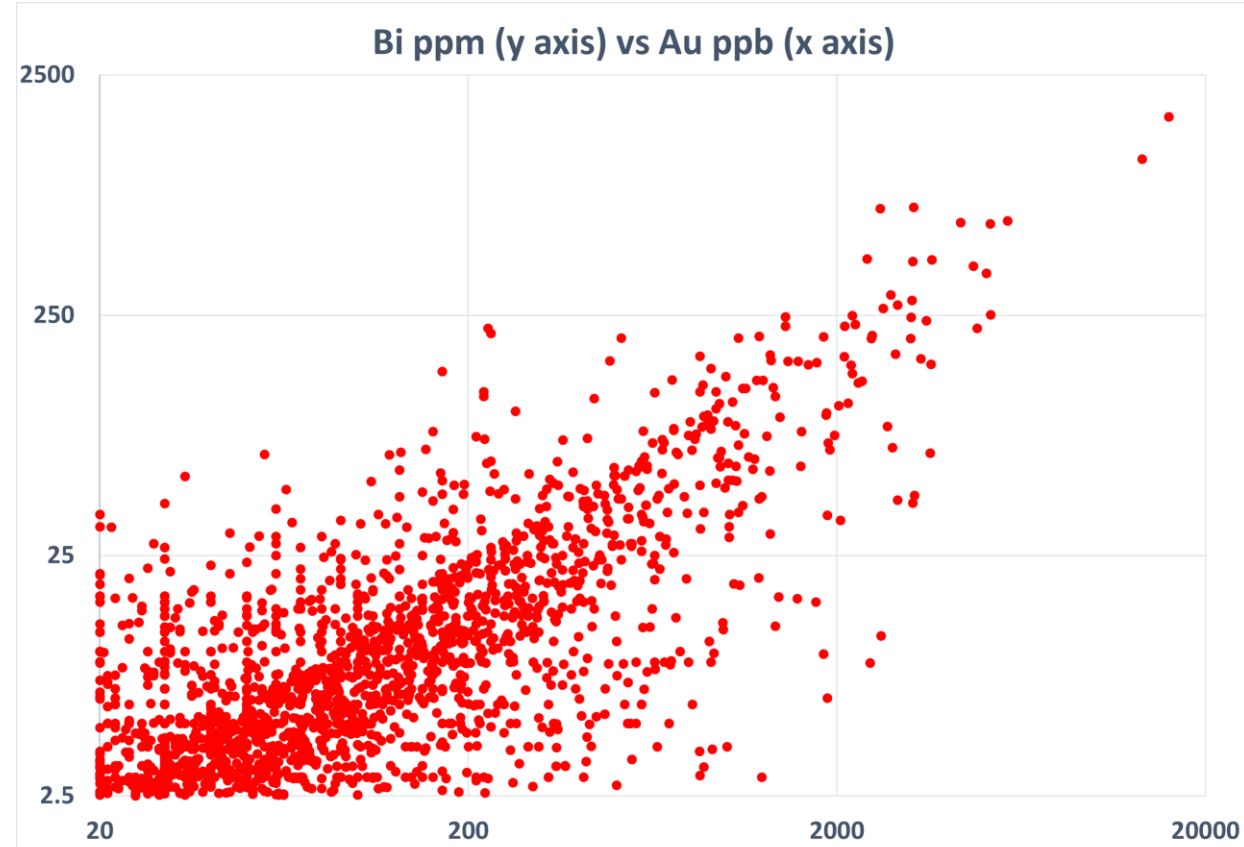
*New Geochemical Tools : CSIRO
developed Ultrafine[®] soils*



Geochemical Pathfinder : It's Bismuth not Arsenic



Very weak correlation between arsenic and gold



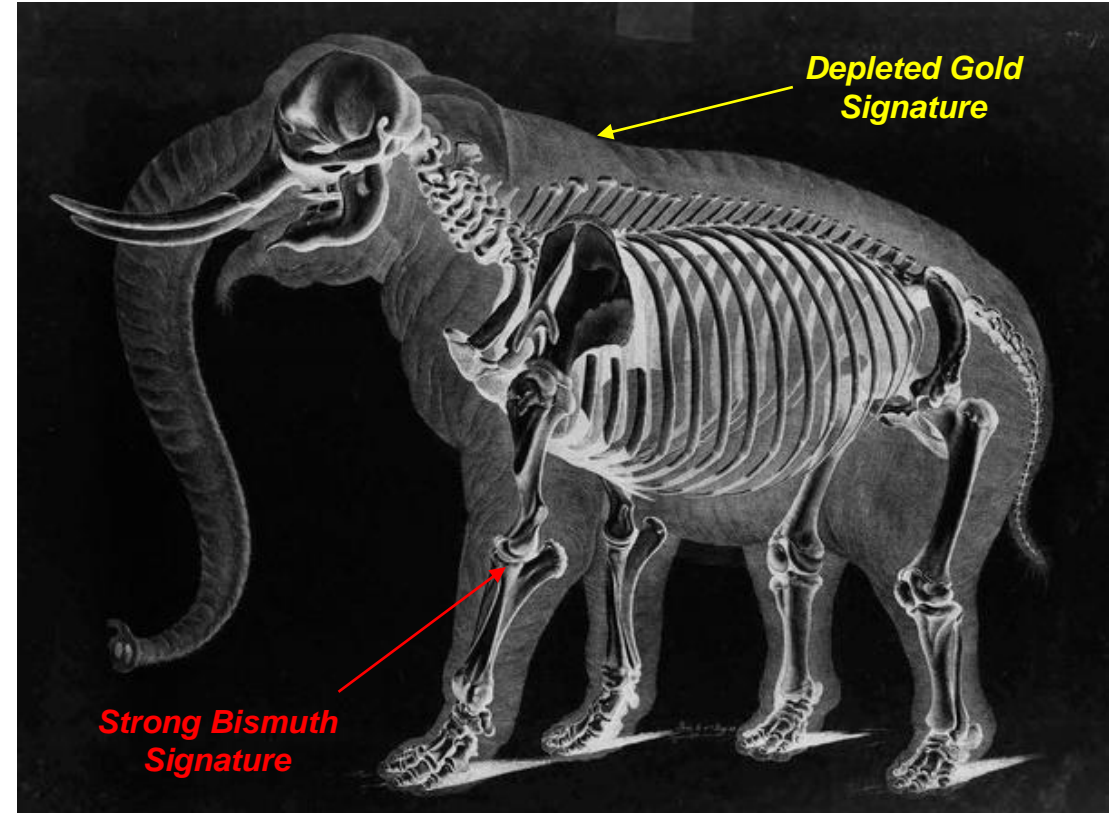
Very strong correlation between bismuth and gold

Graphs show all drilling assay data (>2ppm Bi and >20ppb Au)

Searching for an Elephant in the Tanami

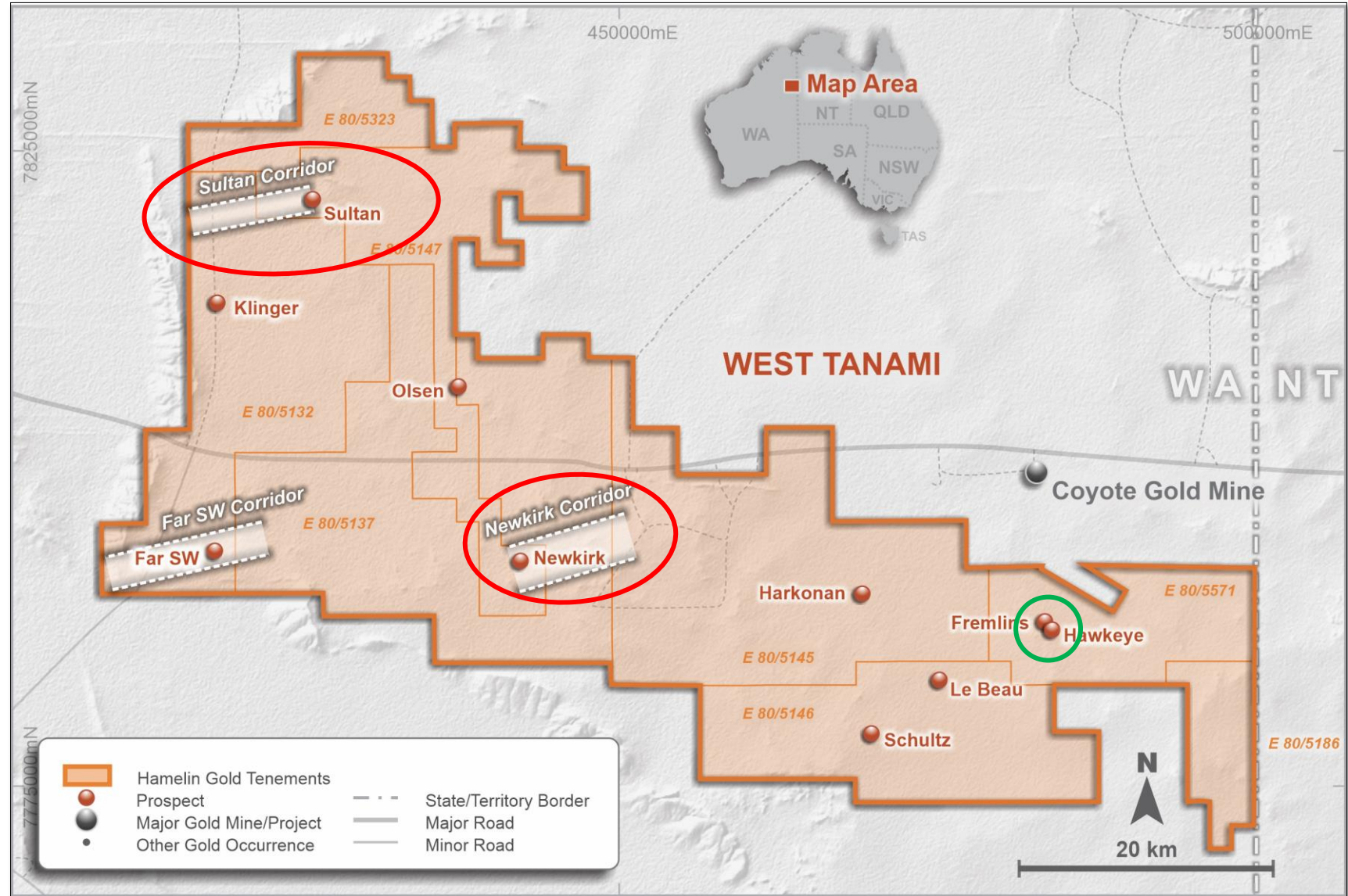


A multi-million ounce Gold Deposit



A weathered and leached multi-million ounce Gold Deposit

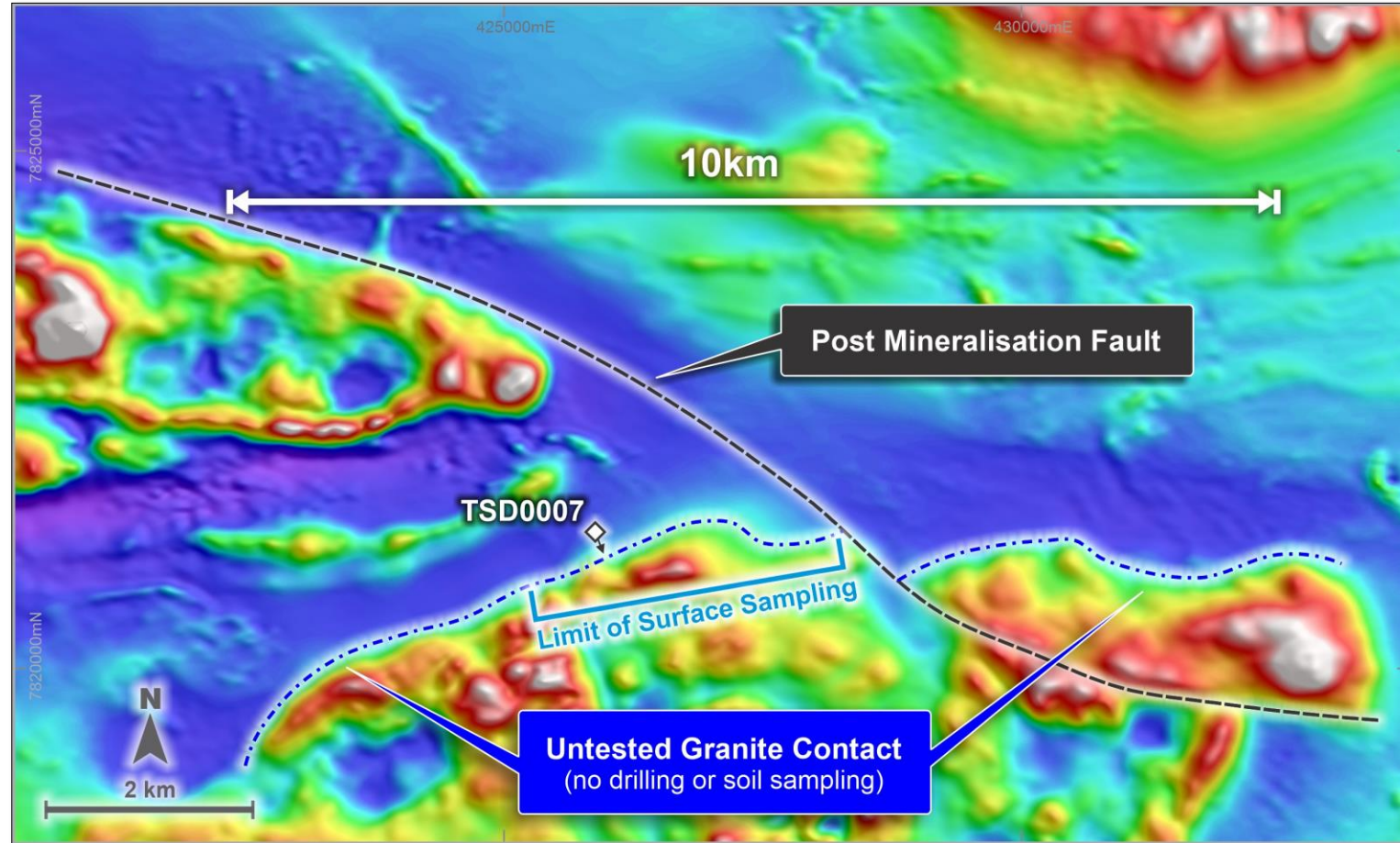
New Camp Scale Targets



West Tanami Project – Prospect Location Map

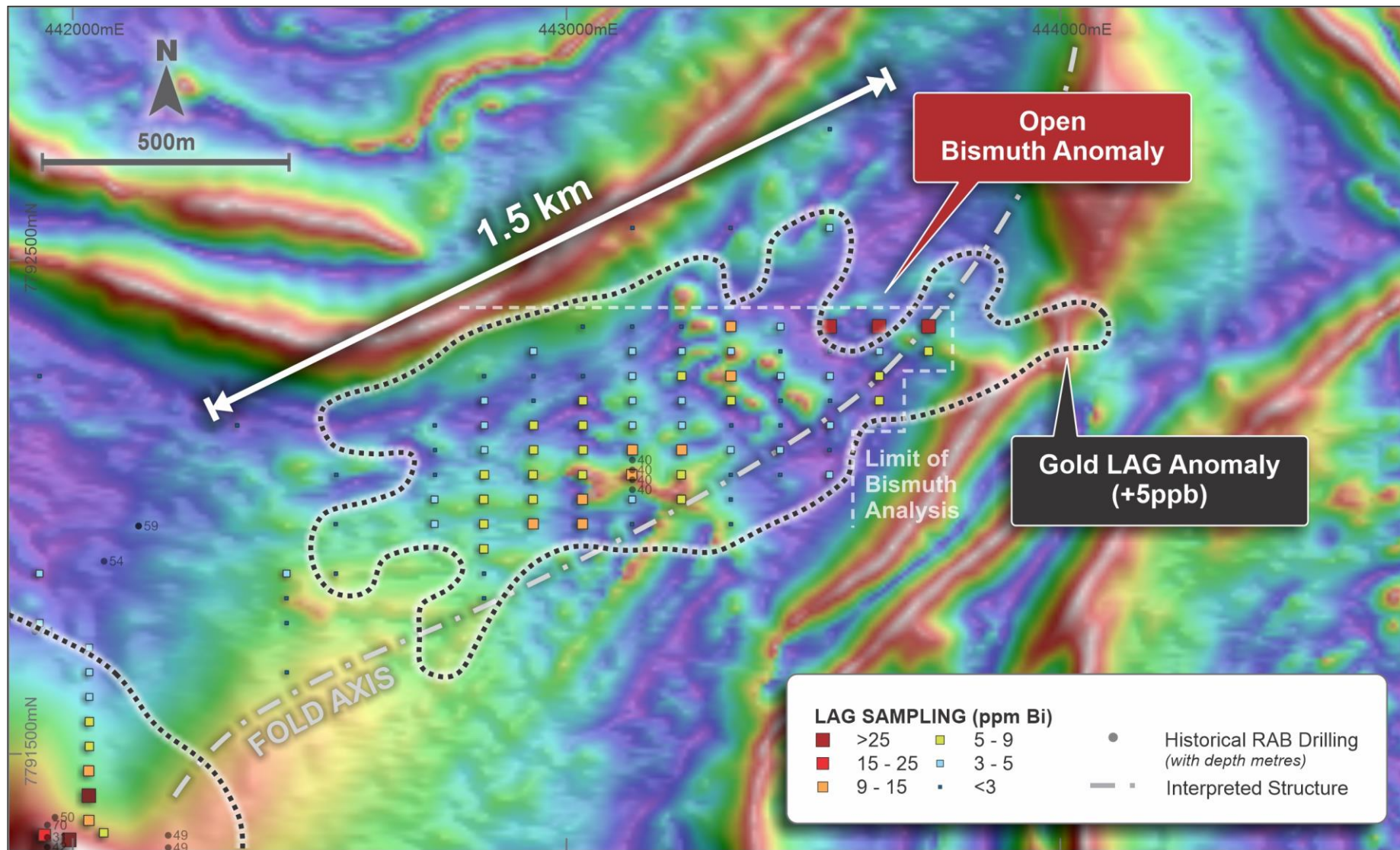
Sultan Gold Corridor

- 10km long previously unknown gold corridor
- ~2km portion soil sampled identifying Au-Bi anomaly
- Single drill line completed intersecting:
 - 7.6m @ 3.2g/t Au from 326.2m incl. 1.1m @ 15.9g/t Au from 329.7m¹ in TSD0007
- Additional soils completed covering a further 6km of the Sultan corridor
- EIS co-funded drilling grant (\$180K) to complete next phase of drilling



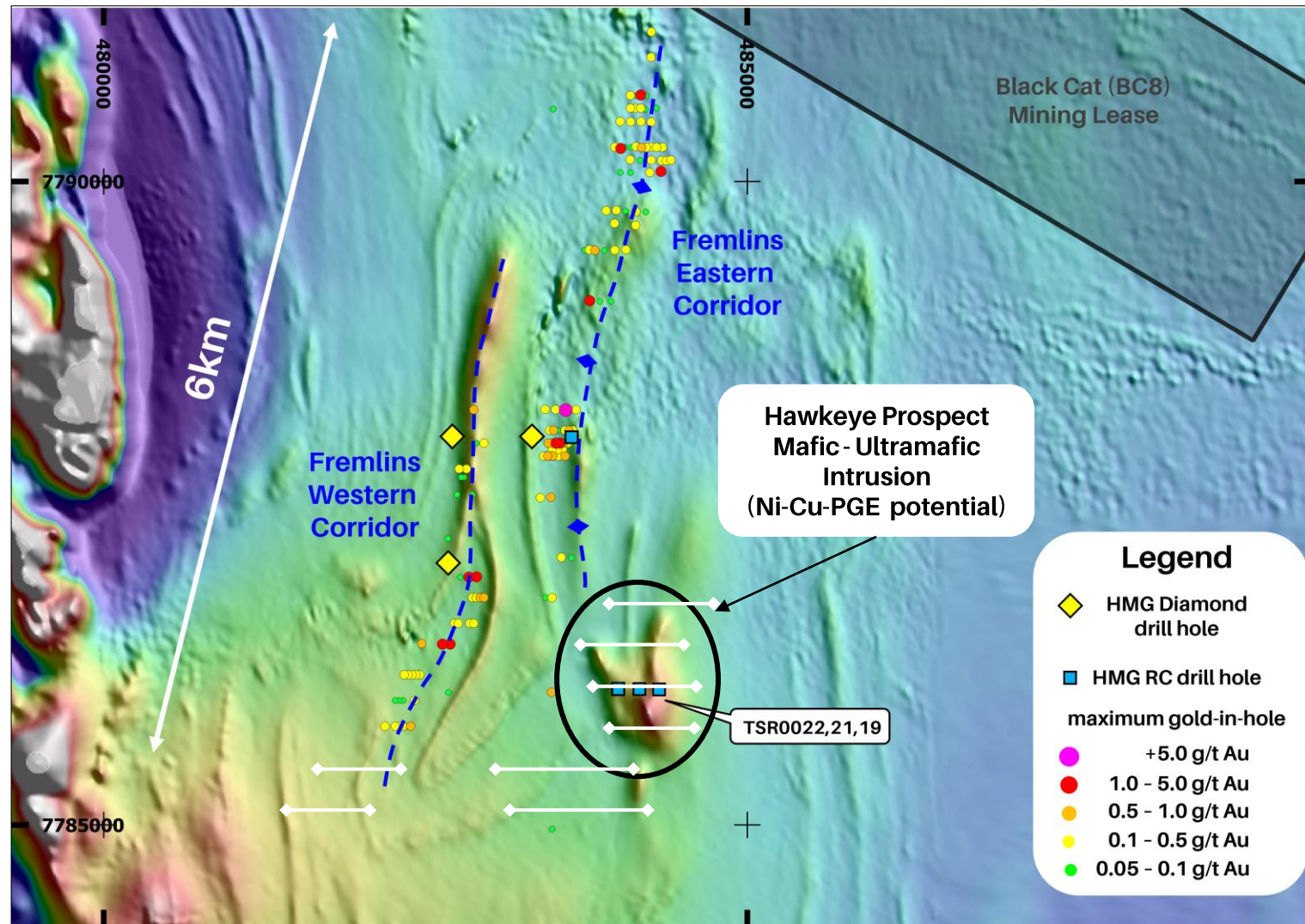
Sultan Corridor – TSD0007 location on magnetics

Newkirk Camp Scale Gold Target



Fremlins Prospect

- Two defined regolith anomalies extend over 6km of strike (+100ppb Au)
- End of hole gold anomalism open along strike and at depth¹
 - 22m @ 0.6g/t Au from 45m to EOH incl. 6m@ 1.71g/t Au from 57m
 - 30m @ 0.3g/t Au from 9m incl. 1m @ 5.72g/t Au from 12m
 - 80m @ 0.2g/t Au from 52m to EOH
- Ni-Cu-PGE mineralised intrusion identified at Hawkeye
- 70 hole aircore drilling program recently completed



Fremlins – Drill collar location, max Au-in-hole on detailed TMI magnetics

Activity Summary (Jul – Dec 2023)

Program	Timing	Results (est.)
Fremlins / Hawkeye aircore drilling (4,400m)	Completed	Oct / Nov '23
Sultan, Newkirk, Far SW geochemistry (1,500 samples)	Completed	Oct / Nov '23
Harkonnen, Schultz and Le Beau RC drilling (2,600m)	Completed	Oct / Dec '23
Klinger, Newkirk, Olsen aircore drilling (~5,000m)	In progress	Nov '23 / Jan '24
RC drilling follow up program* (1,500m)	Oct '23	Dec '23 / Jan '24
Ground Electromagnetics Ni-Cu-PGE Targets	Oct / Nov '23	Dec '23 / Jan '24



Contact

Telephone: +61 8 9486 9455

Website: www.hamelingold.com.au

Email: contact@hamelingold.com.au

Suite 2, 1 Alvan Street

Subiaco WA 6008

ASX: HMG