



**CULPEO
MINERALS**

**COPPER DEVELOPMENT FOR
A CLEAN ENERGY FUTURE**

ASX: CPO | OTCQB: CPORF

August 2023



Disclaimer



This Presentation and any accompanying verbal Presentation (together the Presentation) has been prepared by Culpeo Minerals Limited (“Culpeo” or “the Company”) and approved by the Board of the Company. The information contained in the Presentation (Information) is a summary only and should be read in conjunction with any oral briefing and all other documents provided to you by the Company. The Information is current as of the date of disclosure and the Company does not undertake to provide any additional or updated information, whether as a result of new information, future events or results or otherwise. By receiving the Presentation, you acknowledge and represent to the Company that you have read, understood and accepted the terms of this disclaimer.

The Company has prepared the Presentation based on information available to it at the time of preparation. No representation or warranty, express or implied, is made as to the currency, accuracy, reliability, completeness or fairness of the information, opinions and conclusions contained in this Presentation. Neither Culpeo, its related bodies corporate, shareholders or affiliates, nor any of their respective officers, directors, employees, affiliates, agents or advisers (Agents) guarantee or make any representations or warranties, express or implied, as to or take responsibility for, the currency, accuracy, reliability, completeness or fairness of the information, opinions and conclusions contained in this Presentation. Culpeo does not represent or warrant that this Presentation is complete or that it contains all material information about Culpeo or which a prospective investor or purchaser may require in evaluating a possible investment in Culpeo or acquisition of shares. To the maximum extent permitted by law, Culpeo and its Agents expressly disclaim any and all liability, including, without limitation, any liability arising out of fault or negligence, for any loss arising from the use of information contained in this Presentation, or otherwise arising in connection with it.

Any forward-looking statements in this Presentation, including projections, forecasts and estimates, are provided as a general guide only and should not be relied on as an indication or guarantee of future performance and involve known and unknown risks, uncertainties, assumptions, contingencies and other important factors, many of which are outside the control of Culpeo and which are subject to change without notice and could cause the actual results, performance or achievements of Culpeo to be materially different from the future results, performance or achievements expressed or implied by such statements. Past performance is not necessarily a guide to future performance and recipients of this Presentation are cautioned not to place undue reliance on such forward-looking statements.

The information contained in this Presentation is for information purposes only, does not constitute investment or financial product advice (nor taxation, accounting or legal advice) and is not intended to be used as the basis for making an investment decision. In providing this Presentation, Culpeo has not considered the objectives, financial position or needs of any particular recipients. Before making an investment decision prospective investors should consider the appropriateness of the information in this Presentation having regard to their own objectives, financial situation and needs, and seek legal, taxation and financial advice appropriate to their jurisdiction and circumstances.

This Presentation is not a prospectus, product disclosure statement or other offering document under Australian law or any other law (and will not be lodged with the Australian Securities and Investments Commission, or any other foreign regulator) and is not, and does not constitute, an invitation or offer of securities for subscription, purchase or sale in any jurisdiction. In particular, this Presentation does not constitute an invitation or offer of securities for subscription, purchase or sale in the United States or any other jurisdiction in which such an offer would be illegal. The securities referred to in this Presentation have not been, and will not be, registered under the U.S. Securities Act of 1933 as amended or the securities laws of any state or other jurisdiction of the United States and may not be offered or sold, directly or indirectly in the United States.

The information in this Presentation is strictly confidential. It may not be disclosed, reproduced, disseminated, quoted or referred to in whole or in part, without the express consent of Culpeo.



TRANSFORMATIONAL ACQUISITION EXPANDS EXISTING COPPER FOOTPRINT



NEW PROJECT AREA

1. Fortuna

Four key outcropping copper targets – drill ready Vaca Muerta prospect.



EXISTING PROJECT AREAS

2. Lana Corina

High-grade outcropping copper discovery, 257m @ 1.10% CuEq¹.



3. Quelon

240km north of Santiago, multiple outcropping targets of up to 3.43% Cu¹.



4. Las Petacas

Along strike from Lundin's (TSE: LUN) Candelaria Mine 952 Mt @ 0.65% Cu¹.



1. Refer Appendix 2 for additional details including CuEq calculation methodology. Culpeo confirms that it is not aware of any new information or data that materially affects the information included in those releases. All material assumptions and technical parameters underpinning those releases continues to apply and has not materially changed.

Transaction detail

Transformational Chilean copper acquisition



HIGHLY COMPLEMENTARY ACQUISITION

80% interest in the **Fortuna Project**.
Four key outcropping copper targets.
Drill-ready Vaca Muerta prospect.



HIGH IMPACT EXPLORATION TARGETS

Areas hosts numerous historic surface and underground mines over a strike length of >6km.
Project contains multiple outcropping copper prospects with four drill-ready targets.



LOW COST AND FLEXIBLE DEAL STRUCTURE

Consideration and payment schedule:
Cash consideration to be paid in US\$10k monthly instalments over a five-year period.
All exploration expenditure to be applied to Lana Corina earn-in.

A. Outcropping breccia hosted copper mineralisation at Vaca Muerta
B. Bornite and Chalcopyrite mineralisation present in stockpiles at El Quillay
C. Outcropping copper oxide mineralisation associated with an extensive stockwork and alteration zone (1300m x 400m) at La Florida!

1. In relation to the disclosure of visual mineralisation, the Company cautions that visual estimates of mineral abundance should never be considered a proxy or substitute for laboratory analyses where concentrations or grades are the factor of principal economic interest. Assay results are required to determine the actual widths and grade of the visible mineralisation. Visual estimates also potentially provide no information regarding impurities or deleterious physical properties relevant to valuations.



CHILE

A MAJOR PRODUCER

THE WORLD'S TOP
COPPER PRODUCER AND
LARGEST **COPPER**
RESERVES
HOME TO THE WORLD'S
BIGGEST, MOST
SUCCESSFUL MINING
COMPANIES

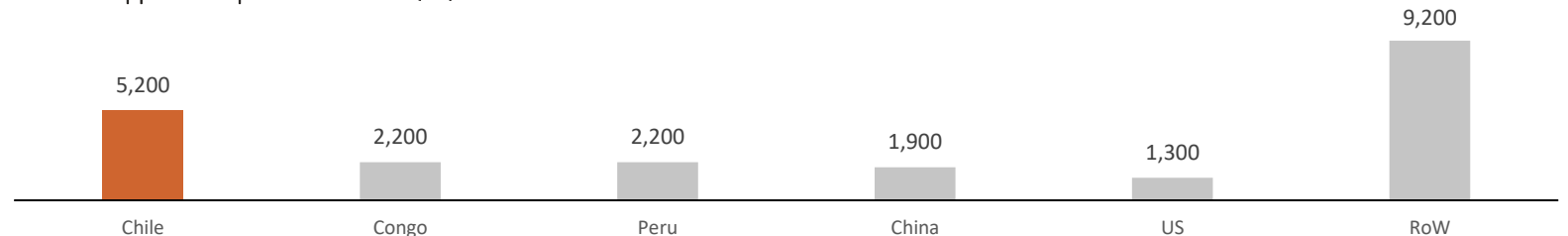
MINING A KEY
CONTRIBUTOR TO
THE CHILEAN
ECONOMY

MINING REPRESENTS
OVER HALF OF THE
COUNTRY'S TOTAL
EXPORTS

RANKED THE BEST
COUNTRY IN SOUTH
AMERICA FOR MINING
INVESTMENT



Global copper mine production 2022 (Mt)



Source: U.S. Geological Survey, Mineral Commodity Summaries, January 2023



WEAK STRONG

COPPER STRONG OUTLOOK

INTEGRAL TO
ELECTRONICS AND
ELECTRIFICATION
COPPER
IS SET TO PLAY A
CRITICAL ROLE IN THE
MOVE TO A ZERO
EMISSIONS ECONOMY

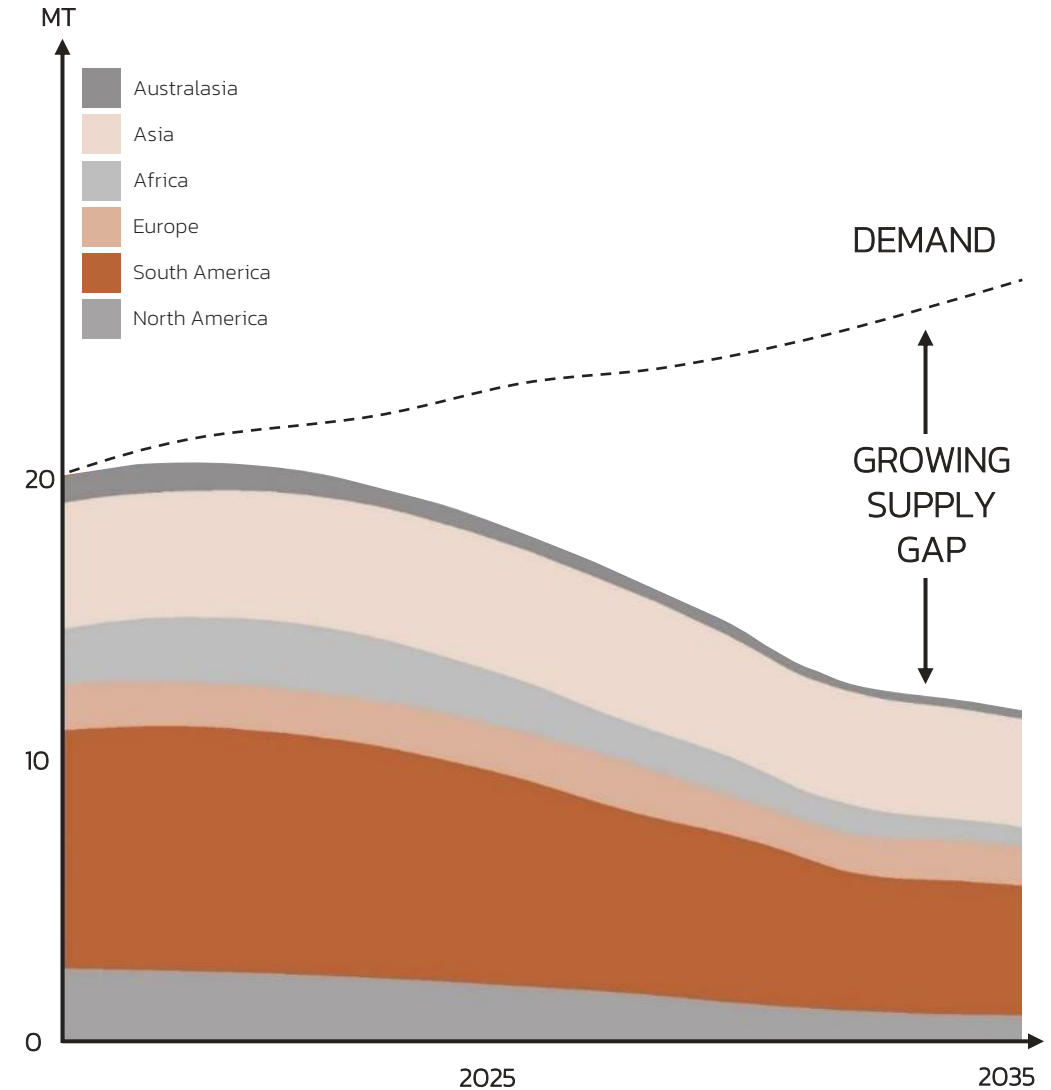
SUPPLY PIPELINE
LACKS HIGH-
QUALITY, LARGE-
SCALE PROJECTS

ACCELERATION OF
ELECTRIFICATION
DRIVING SIGNIFICANT
MARKET DEFICIT

ANY CHINESE
STIMULUS TO
ACCELERATE DEMAND
EXPECTATIONS

SUSTAINED COPPER
PRICE RALLY
EXPECTED FROM
2024

COMMITTED COPPER MINE SUPPLY FORECAST¹



¹ Source: Cru, Wood Mackenzie, Macquarie



**CULPEO
MINERALS**

**INVESTMENT
HIGHLIGHTS**

**CHILEAN COPPER
DEVELOPMENT FOR A
CLEAN ENERGY
FUTURE**



**A HIGH IMPACT COPPER PORTFOLIO WITH
MULTIPLE DRILL READY TARGETS**



**LOCATED IN THE PREMIER COPPER
PRODUCING REGION GLOBALLY**



**SYSTEMATIC EXPLORATION PROGRAM TO
UNLOCK LATENT RESOURCE POTENTIAL**



**THE RIGHT TEAM TO DELIVER RAPID ASSET
ADVANCEMENT AND DEVELOPMENT**



**CULPEO
MINERALS**

KEY PROJECT DETAIL

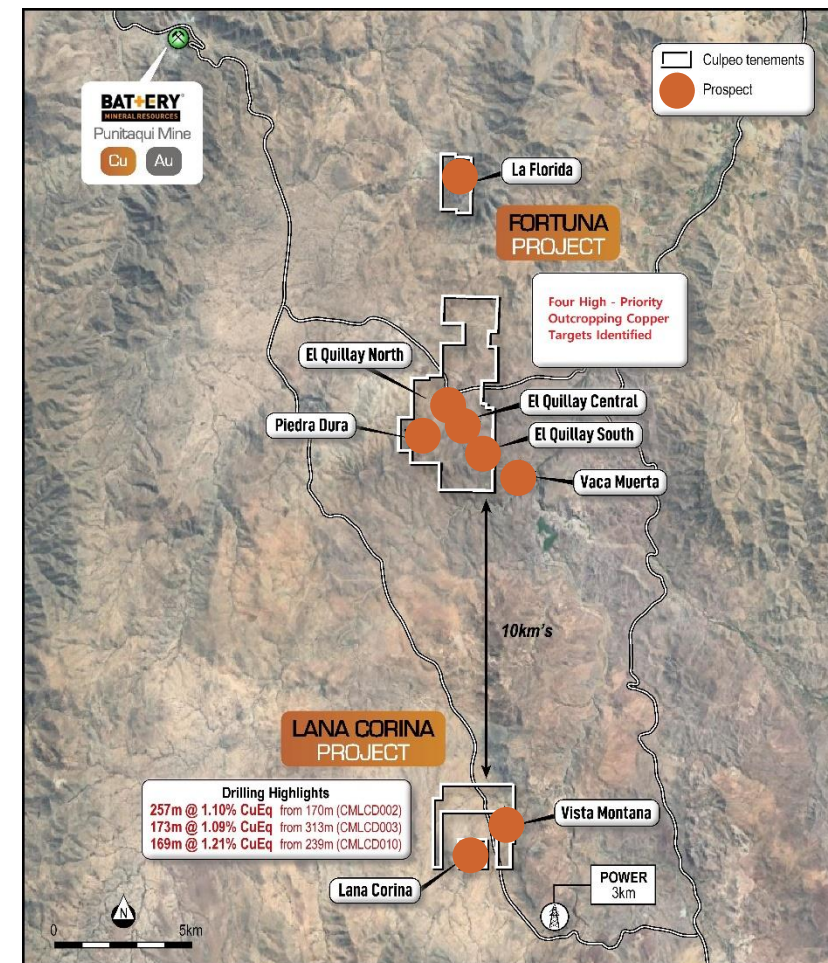


1. Fortuna

Complementary acquisition immediately north of Lana Corina discovery



- Numerous historic surface and underground mines over a strike length of >6km¹.
- Four high priority outcropping targets:
 - Vaca Muerta;
 - Piedra Dura;
 - La Florida; and
 - El Quillay.



Plan view showing locations of Lana Corina and Vista Montana Projects.

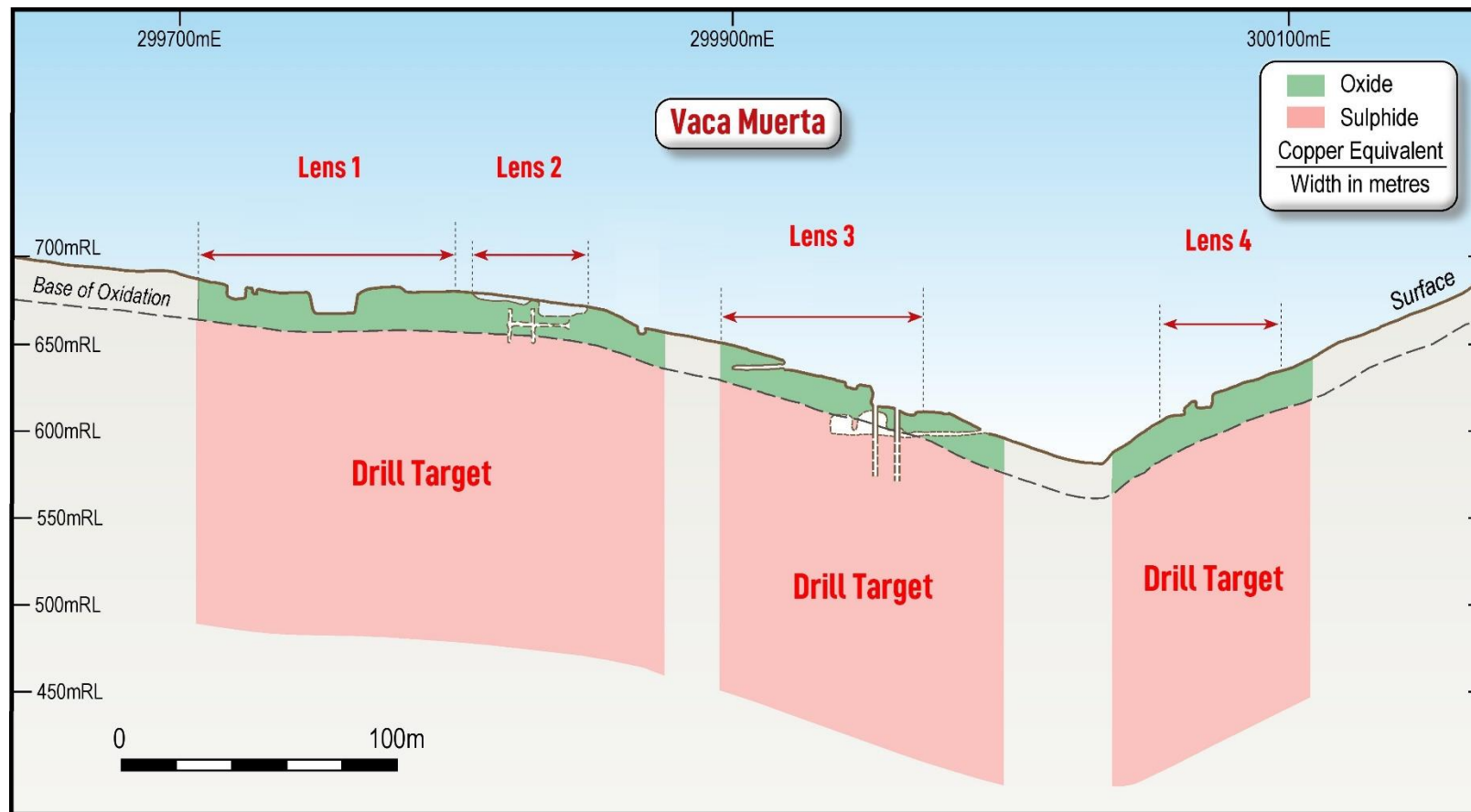
¹ Refer ASX announcement 7 August 2023.

1. Fortuna

Drill ready targets at Vaca Muerta prospect



- Shallow cover with base of oxidation approximately 25m deep.
- Oxide mineralogy consists of malachite and chrysocolla.
- Sulphide zone is dominated by chalcopyrite and bornite.



Long section through Vaca Muerta Prospect showing drill targets (Refer ASX announcement 7 August 2023).

2. Lana Corina

High-grade outcropping copper and molybdenum discovery

- Successful 13 hole drilling program intersected significant copper and molybdenum mineralisation.
- Lana Corina – Breccia Pipe / Porphyry (Cu and Mo):
 - Successful Maiden Drilling Program:
 - 257m @ 1.10% CuEq in CMLCD002 from 170m²
 - 173m @ 1.09% CuEq in CMLCD003 from 313m³
 - 169m @ 1.21% CuEq in CMLCD010 from 239m⁵
 - 104m @ 0.81% CuEq in CMLCD001 from 155m¹
 - 81m @ 1.16% CuEq in CMLCD005 from 302.1m⁴
 - 72m @ 0.91% CuEq in CMLCD013 from 352m⁶
 - 17 Regional Targets Identified.
- Strategically located near infrastructure, low-altitude and operating mines.
- Team has proven discovery, development and capital markets success.

1. Refer ASX announcement 2 May 2022

2. Refer ASX announcement 11 May 2022

3. Refer ASX announcement 6 June 2022

4. Refer ASX announcement 20 June 2022

5. Refer ASX announcement 23 November 2022

6. Refer ASX announcement 16 January 2023

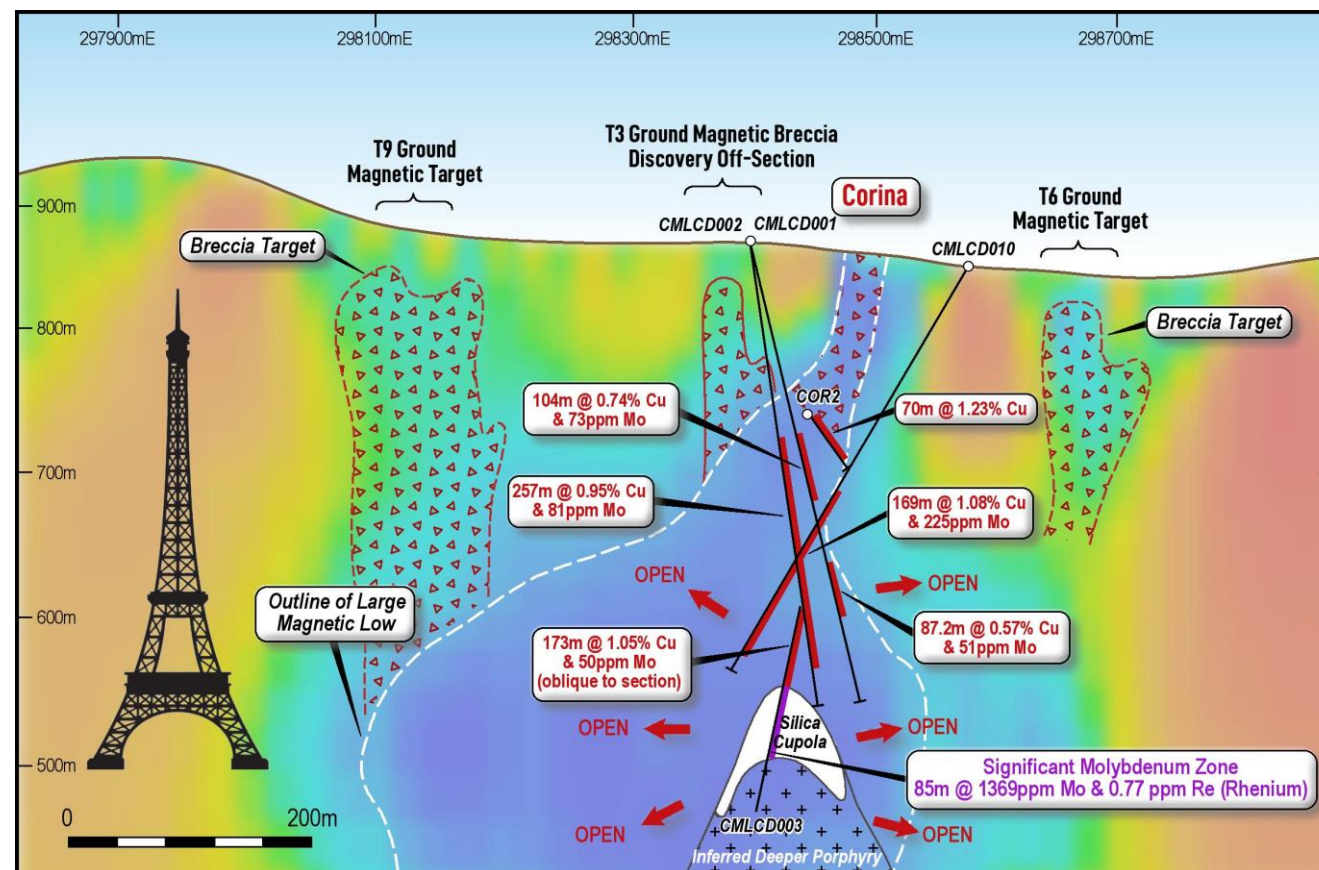


2. Lana Corina

High-grade outcropping copper and molybdenum discovery



- Successful 13 hole drilling program intersected significant copper and molybdenum mineralisation.
- Mineralised corridor extends for over 3km to the northeast and approximately 700m deep.
- Copper equivalent intersections:
 - CMLCD001: 104m @ 0.81% CuEq from 155m¹;
 - CMLCD002: 257m @ 1.10% CuEq from 170m²;
 - CMLCD003: 173m @ 1.09% CuEq from 313m³;
 - CMLCD005: 81m @ 1.16% CuEq from 302m⁴;
 - CMLCD005A: 16.4m @ 1.38% CuEq from 118m⁵;
 - CMLCD007: 34.7m @ 0.97% CuEq from 515m⁶;
 - CMLCD010: 169m @ 1.21% CuEq from 239m⁷; and
 - CMLCD013: 72m @ 0.91% CuEq from 352m⁸.
- Zones of high-grade molybdenum and rhenium:
 - 85m @ 1,369 ppm Mo (0.58% CuEq) from 486m³;
 - 35m @ 1,704 ppm Mo (0.84% CuEq) from 486m;
 - including. 4m @ 8,845 ppm Mo (3.48% CuEq); and
 - including. 1m @ 15,000 ppm Mo (6.09% CuEq).



Lana Corina schematic section looking north showing position of drillholes, geophysical targets and the high-grade Mo and Re mineralisation hosted within deeper silica rich cupola. (Refer ASX announcement 31 August 2022).

1. Refer ASX announcement 2 May 2022
2. Refer ASX announcement 11 May 2022

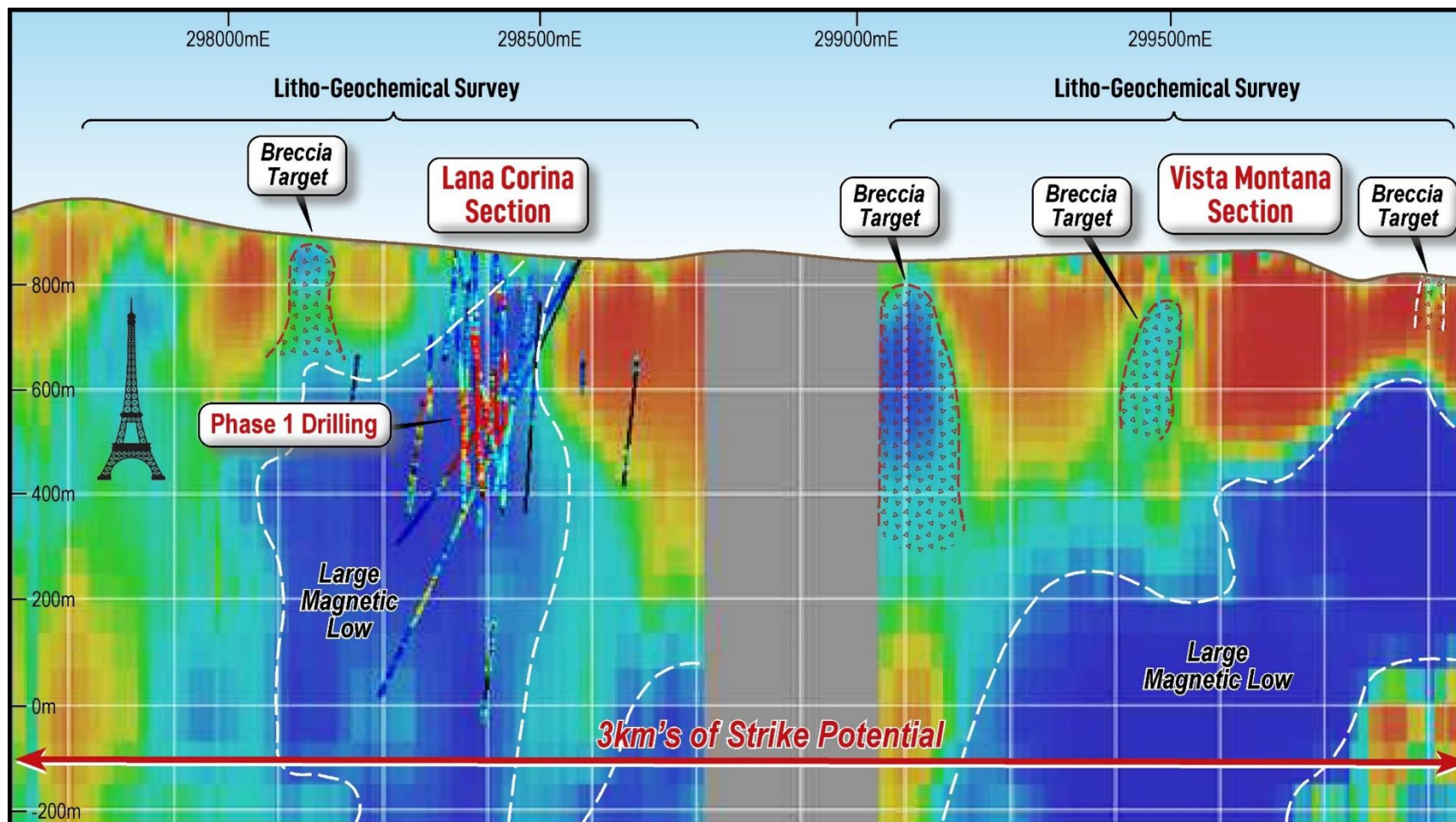
3. Refer ASX announcement 6 June 2022
4. Refer ASX announcement 20 June 2022

5. Refer ASX announcement 6 September 2022
6. Refer ASX announcement 19 July 2022

7. Refer ASX announcement 23 November 2022
8. Refer ASX announcement 16 January 2023

2. Lana Corina

Regional potential with outcropping copper targets over 3km of strike



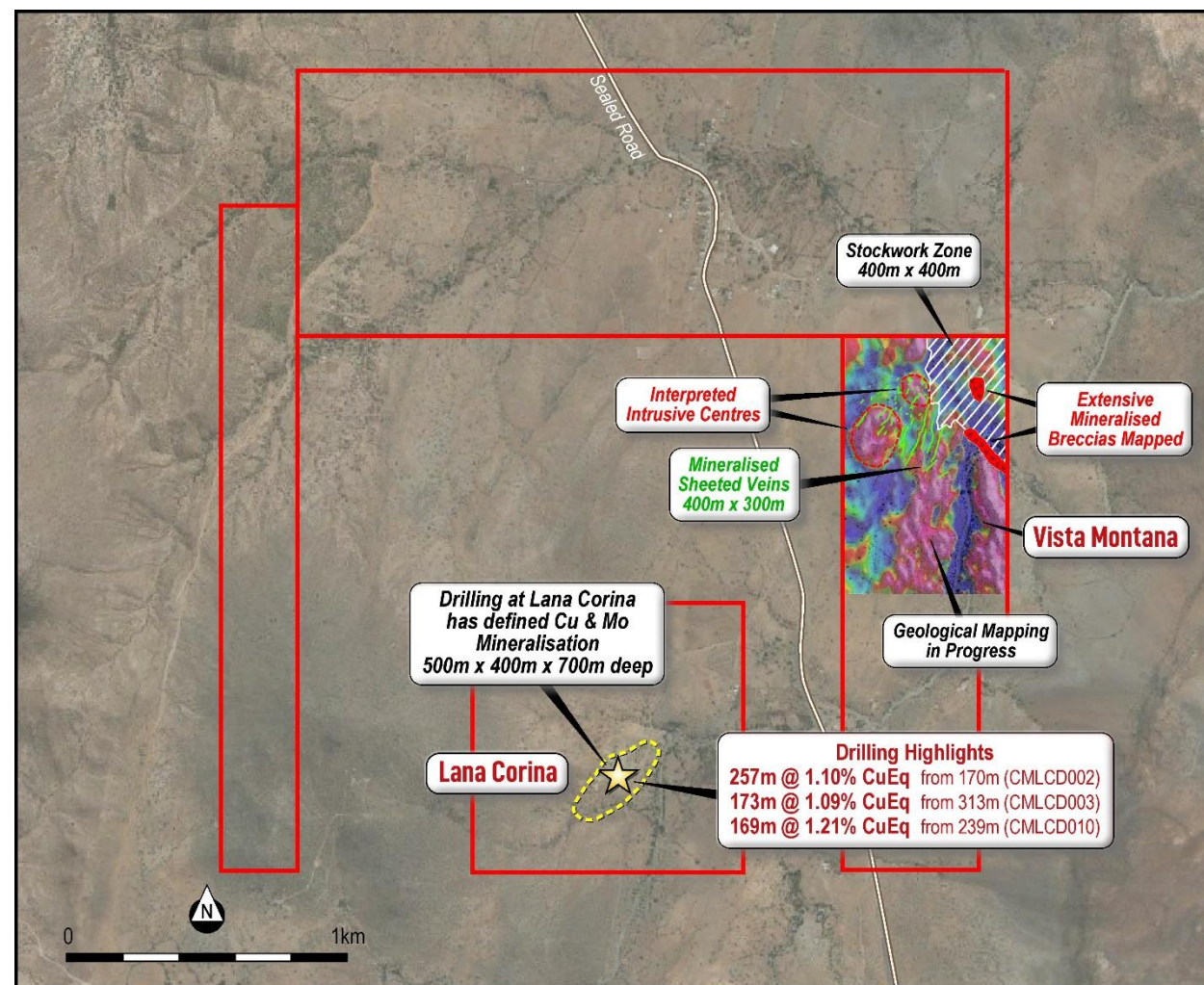
Lana Corina/Vista Montana long section: Defined targets over >3km of strike (background image is the VOXI 3D magnetic inversion model)
(Refer ASX announcement 31 August 2022).

2. Lana Corina – Vista Montana

Exploration drilling planned to test outcropping copper and breccia zones



- 600m drilling program planned at Vista Montana.
- Outcropping copper and breccia zones to be tested.
- Surface mapping has identified outcropping mineralisation over an area of 400m and 300m and associated with interpreted intrusive centres.
- Holes will also test deeper magnetic low features which indicated Lana Corina style mineralisation at shallow levels.



Plan view – Lana Corina Project highlighting Vista Montana (Total Magnetic Intensity Overlay, ASX announcement 18 May 2022), showing Cu bearing sheeted vein system (green lines), stockwork and breccia zones identified from mapping (Refer ASX announcement 7 June 2023).

3. Quelon

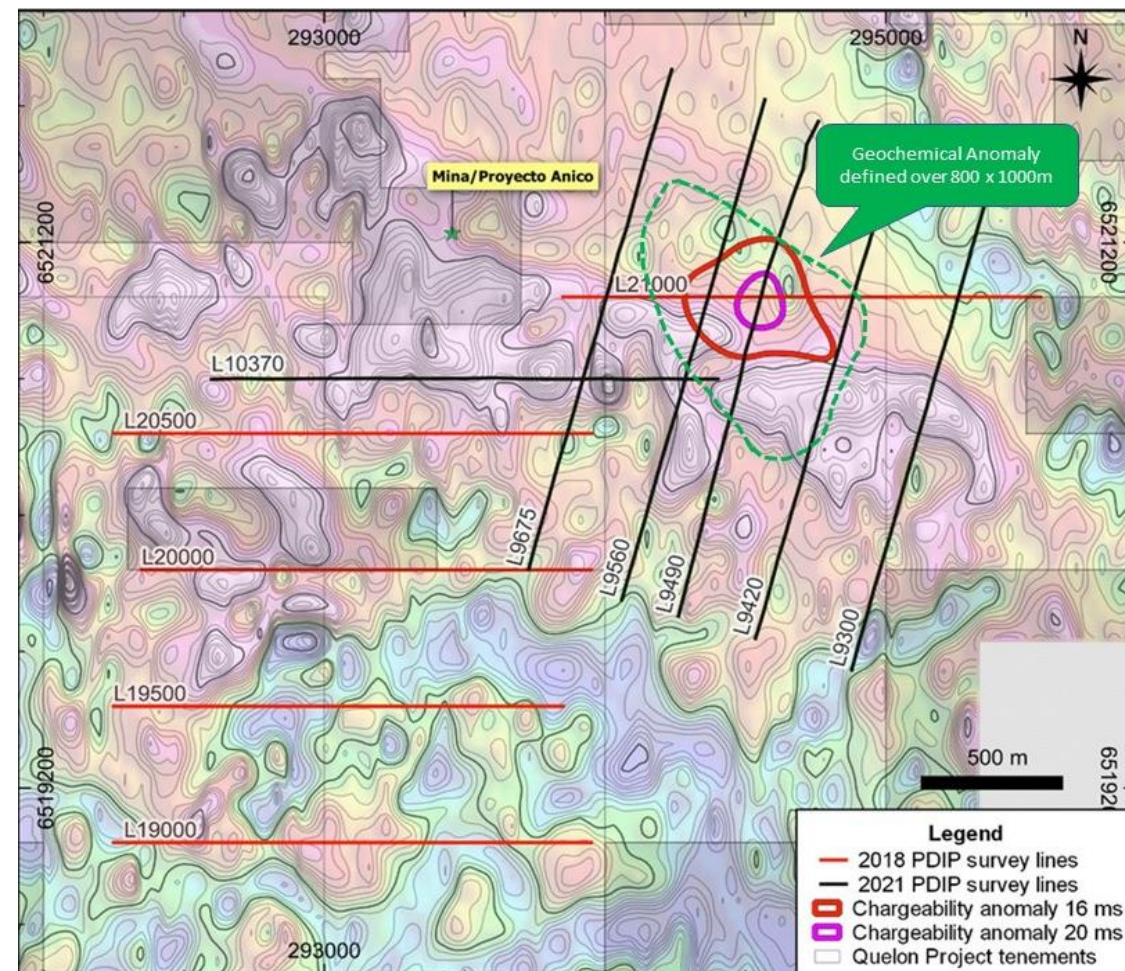
Multiple outcropping targets up to 3.43% Cu¹

- Located 240km north of Santiago (40km south of Lana Corina).
- Emerging major IOCG district.
- Pucobre's El Espino Project 8km East – 123Mt @ 0.66% Cu and 0.24g/t Au (López et al, 2014)².
- IP Survey identified multiple drill ready anomalies.
- Scout drilling intersected 1m @ 0.77% Cu, 0.21g/t Au and 30ppm Mo³.

1. Refer Company's Prospectus dated 23 June 2021, page 43.

2. López, G.; Hitzman, M.; Nelson, E. 2014. Alteration patterns and structural controls of the El Espino IOCG mining district, Chile. *Mineralium Deposita* 49 (2): page 235.

3. Refer ASX announcement "Scout Drilling Intersects Cu, Au and Mo Mineralisation at Quelon 3 May 2023"

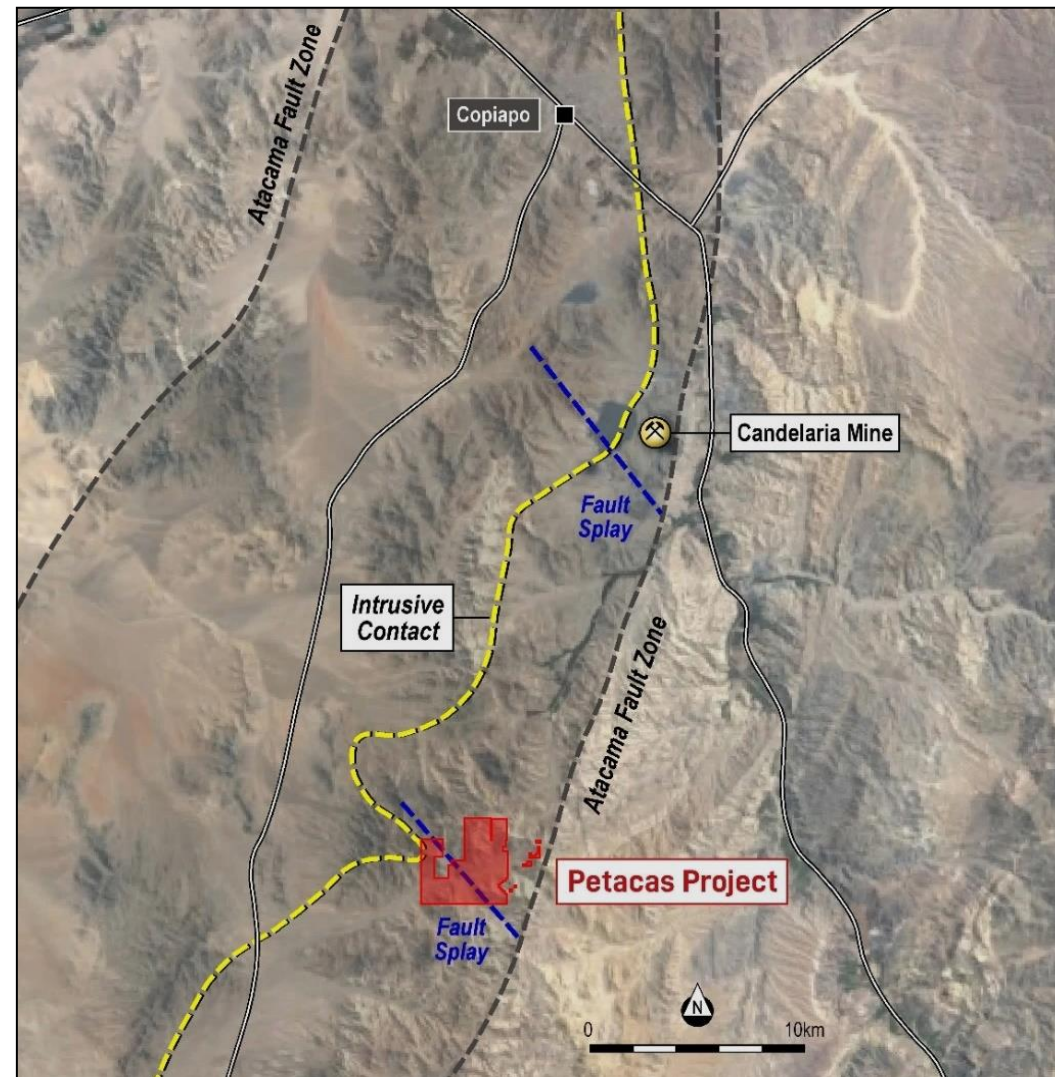


Plan view showing filtered ground magnetic intensity anomaly image and contours for the Anico Prospect as released to ASX on 19 April 2022, overlain with 2018 and 2021 PDIP survey line locations and the outline of a high-amplitude chargeability target (Refer ASX announcement 3 May 2023).

4. Las Petacas

Along strike from Lundin's Candelaria Mine

- Hosted within the Atacama Fault System (AFS), the same regional structure as the large Candelaria Copper/Gold deposit located 15km's to the north.
- Phase 1 drilling program completed confirming the presence of broad zones copper-gold mineralisation in all holes.
- Majority of the >6km copper mineralised trend remains untested by drilling.
- Additional drilling planned over the undrilled Diego East and Far East Prospects, where geophysics surveys have identified multiple copper targets.



Location of the Las Petacas Project and nearby Candelaria Copper Mine (Refer ASX announcement 6 January 2022).

Board and senior management

Successful track record of discovery, project development and value creation



**Geoff
McNamara**

Non-Executive
Chairman

- 30 years' of international resource sector experience.
- Co-founder of Tesoro Gold Ltd which discovered the El Zorro Gold Project in Chile.
- Previously Director of Mining Finance at Societe General, NYC
- Private Equity Manager for PRCM (FUM US\$800M).
- Previous operational roles include Project Manager, Senior Mine Geologist and Mine Geologist for Ivanhoe Mines, Lion Ore International and Western Mining Corporation.



**Max
Tuesley**

Managing
Director

- Geologist with 30 years' experience in base metal and gold exploration and mining domestically and internationally.
- Previously led projects in Mongolia, Sudan, Laos and the Philippines.
- Formerly held senior management roles with Xstrata, focused on Australian copper operations including the Ernest Henry IOCG project.
- Member of the Australasian Institute of Mining and Metallurgy.



**Zeffron
Reeves**

Non-Executive
Director

- Geologist with more than 20 years' of resource experience, spanning greenfield exploration, mineral discovery, definition and feasibility, construction, production and closure.
- Managing Director of ASX listed Tesoro Gold Ltd, a company that has defined the El Zorro Gold Project in Chile.
- Track record of exploration success identifying and delineating new gold districts in Brazil and Chile.



**Paul
Schmiede**

Non-Executive
Director

- Mining engineer with over 25 years' experience in mining, exploration and corporate development across gold and base metal commodities within Australia, Burkina Faso and DRC.
- Currently Vice President Corporate Development TSS-V listed Sarama Resources Ltd.
- Previously held senior roles with Moto Goldmines, Gold Fields and WMC Resources.
- Member of the Australasian Institute of Mining and Metallurgy.



**Sergio
Uribe**

Chilean Country
Manager

- Corporate administrator, manager and development professional with deep Chilean experience.
- More than 10 years' resource sector experience spanning greenfields exploration, discovery production, closure, retreatment and tailings reclamation.
- Country Manager for ASX listed Tesoro Gold Ltd Chile, and previously General Manager of Acorn Mining Chile and Country Manager for Cleveland Mining Chile.

Corporate snapshot

Compelling entry price, strong leverage to further exploration success



Capital structure

Share price (29 August 2023)	A\$0.04
------------------------------	---------

Shares on issue (August 2023)	77.5M
-------------------------------	-------

Listed Options and rights (August 2023)	19.2M
-----------------------------------------	-------

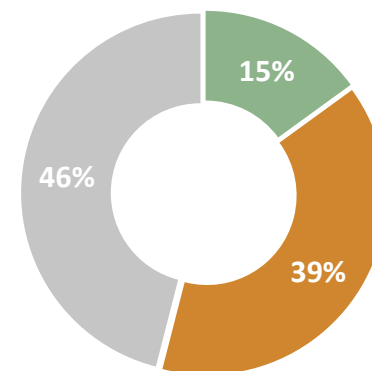
Market capitalisation	A\$3.1M
-----------------------	---------

Cash (30 June 2023)	A\$0.34M
---------------------	----------

Debt (30 June 2023)	Nil
---------------------	-----

Enterprise value (undiluted)	A\$2.8M
------------------------------	---------

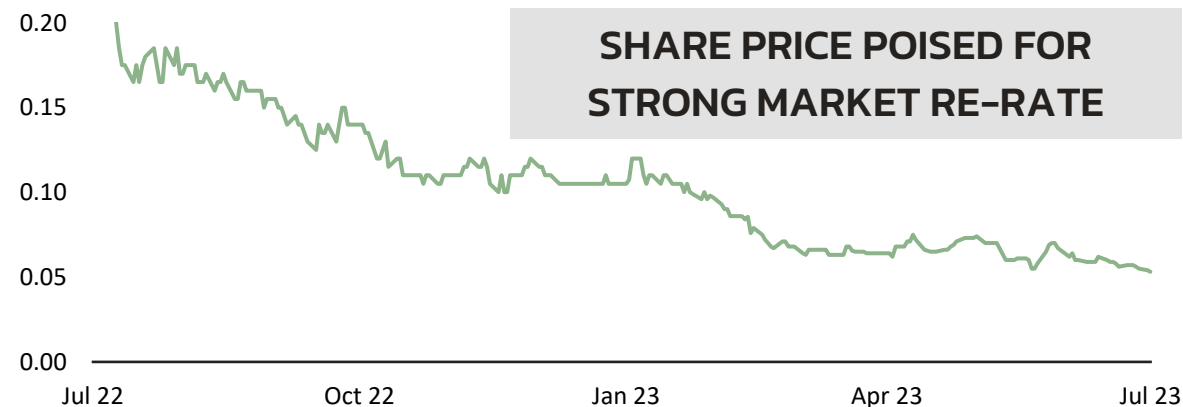
Major shareholders



**TIGHT REGISTER WITH
SUPPORTIVE EXPLORATION-
FOCUSED SHAREHOLDER BASE**

■ Board and management ■ Top 20 ■ Other

Historic share price (A\$/share)



Planned schedule

Targeted, high-impact copper exploration drilling



Project	Activity	Q3-23	Q4-23	Q1-24	Q2-24	Q3-24	Q4-24
<div>Cu</div> Fortuna	Mapping and sampling at Fortuna	■					
<div>Cu</div> Fortuna	Drill testing at Vaca Muerta		■ — ■				
<div>Cu</div> Lana Corina	Drill testing at Vista Montana				■		
<div>Cu</div> Fortuna	Mapping and sampling at El Quillay					■ — ■	



**CULPEO
MINERALS**

INVESTMENT HIGHLIGHTS

**CHILEAN COPPER
DEVELOPMENT FOR A
CLEAN ENERGY
FUTURE**



**A HIGH IMPACT COPPER PORTFOLIO WITH
MULTIPLE DRILL READY TARGETS**



**LOCATED IN THE PREMIER COPPER
PRODUCING REGION GLOBALLY**



**SYSTEMATIC EXPLORATION PROGRAM TO
UNLOCK LATENT RESOURCE POTENTIAL**



**THE RIGHT TEAM TO DELIVER RAPID ASSET
ADVANCEMENT AND DEVELOPMENT**



CULPEO
MINERALS

APPENDICES



Appendix 1

Resource details and copper equivalent (CuEq) value calculations



- **Lana Corina Project:** refer to ASX announcement “Drilling intersects 169m @ 1.08% Cu up to 3.56% Cu” dated 23 November 2022.
- **Quelon Project:** refer to Refer Company’s Prospectus dated 23 June 2021, page 43.
- **Candelaria Mine (TSX: LUN):** refer to Company’s Prospectus dated 23 June 2021, page 30 and SRK Consulting, 2018. Technical Report for the Candelaria Copper Mining Complex, prepared for Lundin Mining Corporation.
- **Assumed commodity prices:** Cu US\$3.00/lb, Au US\$1,700/oz, Mo US\$14/lb and Ag US\$20/oz.
- **Recoveries are assumed from similar deposits:** Cu = 85%, Au = 65%, Ag = 65%, Mo = 80%.
- **CuEq (%) calculated using the following formula:** $\{((\text{Cu}\% \times \text{Cu price 1\% per tonne} \times \text{Cu recovery}) + (\text{Au(g/t)} \times \text{Au price per g/t} \times \text{Au recovery}) + (\text{Mo ppm} \times \text{Mo price per g/t} \times \text{Mo recovery}) + \text{Ag ppm} \times \text{Ag price per g/t} \times \text{Ag recovery})) / (\text{Cu price 1\% per tonne} \times \text{Cu recovery})\}$.
- **CuEq (%):** $\text{Cu (\%)} + (0.54 \times \text{Au (g/t)}) + (0.00037 \times \text{Mo (ppm)}) + (0.0063 \times \text{Ag (ppm)})$.
- It is the Company’s opinion that all elements included in the metal equivalents have a reasonable potential to be recovered.

Appendix 2

Competent persons statement

The information in this announcement that relates to Exploration Results is based on information compiled by Mr Maxwell Donald Tuesley, BSc (Hons) Economic Geology, MAusIMM (No 111470). Mr Tuesley is a member of the Australian Institute of Mining and Metallurgy and is a shareholder and Director of the Company. Mr Tuesley has sufficient experience that is relevant to the style of mineralisation and type of deposit under consideration and to the activity which he is undertaking to qualify as a Competent Person as defined in the 2012 Edition of the Australasian Code for Reporting of Exploration Results, Mineral Resources and Ore Reserves. Mr Tuesley consents to the inclusion in this report of the matters based on this information in the form and context in which it appears.

The information in this announcement that relates to historical Exploration Results for Las Petacas and Quelon is based on information compiled by Mr Jason Froud BSc (Hons), Grad Dip (Fin Mkts), MAIG) and was reviewed by Christine Standing BSc (Hons), MSc, MAusIMM, MAIG, who are both full time employees of Optiro Pty Ltd, acting as independent consultant to Culpeo Minerals Limited. Mr Froud and Ms Standing have sufficient experience which is relevant to the style of mineralisation and type of deposit under consideration and to the activity which they are undertaking to qualify as Competent Persons as defined in the 2012 edition of the 'Australasian Code for Reporting of Exploration Results, Mineral Resources and Ore Reserves' (the JORC Code). The Company confirms that it is not aware of any new information or data that materially affects the historical exploration results included in the original reports.

The information in this announcement that relates to Geophysical Results is based on information compiled by Nigel Cantwell. Mr Cantwell is a Member of the Australian Institute of Geoscientists (AIG) and the Australian Society of Exploration Geophysics (ASEG). Mr Cantwell is a consultant to Culpeo Minerals Limited. Mr Cantwell has sufficient experience which is relevant to the style of mineralisation and type of deposit under consideration and to the activity which he is undertaking to qualify as a Competent Person as defined in the 2012 Edition of the Australasian Code for Reporting of Exploration Results, Mineral Resources & Ore Reserves. The Company confirms that it is not aware of any new information or data that materially affects the historical geophysical results included in the original reports.





CULPEO
MINERALS

CONTACT

LEVEL 48, 152-158 ST GEORGES TERRACE
PERTH WA 6000
+61 (8) 6311 9160 / +61 416 097 403

info@culpeominerals.com.au
max.tuesley@culpeominerals.com.au
geoff.mcnamara@culpeominerals.com.au