



## Maiden Exploration Field Programme Now Underway at Mt Tremblant Lithium Projects in James Bay

### HIGHLIGHTS

- A helicopter assisted fieldwork programme is now underway at Fin's Cancet West and Ross Projects.
- The most prospective target areas that have been defined within the two Projects during the initial desktop work, will be visited during the field work programme.
- The fieldwork programme will include field mapping, outcrop sampling and geochemical sampling over the initial target areas and is expected to be completed by the end of September 2023.

### Focus of Field Work

Fin Resources ('Fin') in country consultant Mercator Geological Services Limited ('Mercator') have confirmed that fieldwork is now underway at the Companies Cancet West Lithium Project. The field team will then be moving across to the Ross Lithium Project, both projects are within the James Bay region in Quebec, Canada.

The Cancet West Project (52km<sup>2</sup>) sits approximately 45 kms west of Winsome Resources (WR1:ASX) Cancet lithium deposit (Cancet) and 100 kms west of Patriot Battery Metal's (PMT.ASX) Corvette Lithium Deposit (Corvette).

The closest lithium deposits to the Ross Project (98km<sup>2</sup>), are the Critical Elements Lithium Corporation's (TSXV: CRE) Graab prospect and Nemaska's Lithium's Whabouchi Mine that occur 65km's and 100 km's to the southwest, respectively.

The prospectivity analysis completed in August 2023 (*refer ASX release dated 7 August 2023*), generated nine target areas across the Ross Lithium Project and seven target areas across the West Cancet Lithium Project. Within these broader target areas, a number of specific LCT pegmatite targets have been defined. These targets will be the focus of the maiden helicopter-assisted field work programme that is currently underway by Mercator Geological Services.

Corporate Directory

Technical Director  
Brian Talbot

Non-Executive Director  
Jason Bontempo

Director and  
Company Secretary  
Aaron Bertolatti

Registered Office  
35 Richardson Street  
West Perth WA 6005

[info@finresources.com.au](mailto:info@finresources.com.au)  
[www.finresources.com.au](http://www.finresources.com.au)

ABN: 25 009 121 644

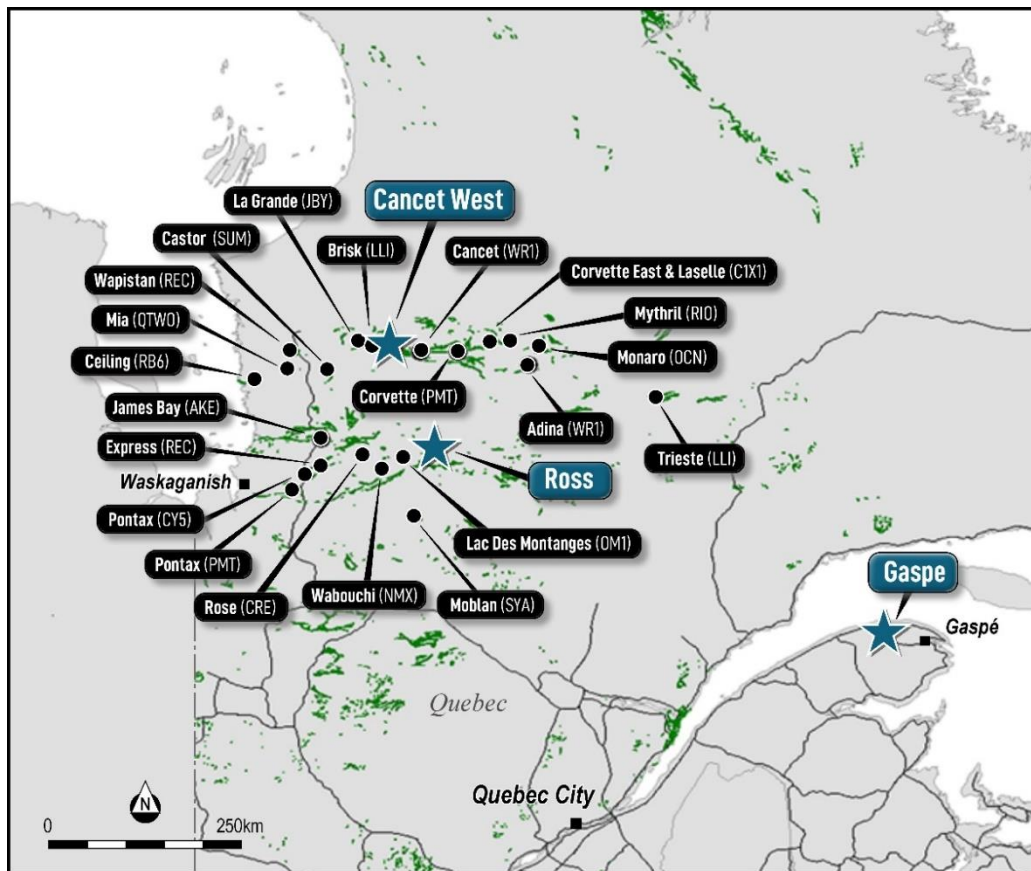


Figure 1 | Location of Ross and Cancet West Lithium Project's in Quebec, Canada

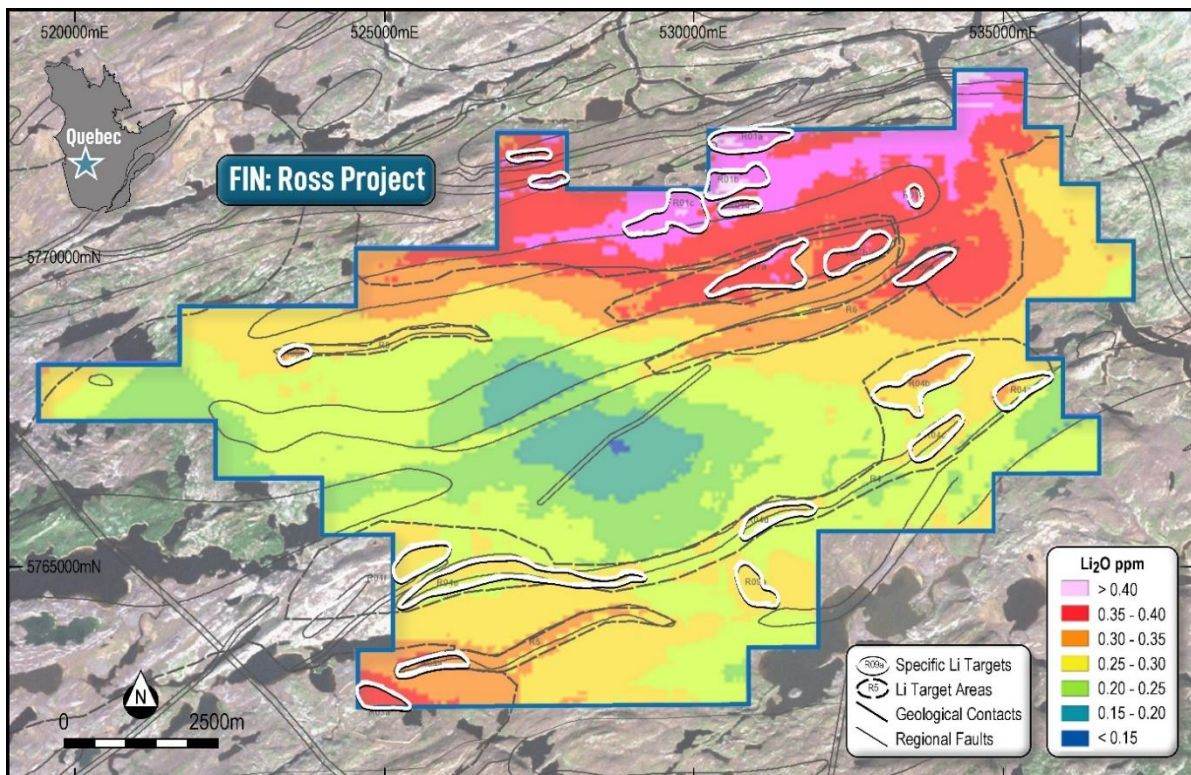
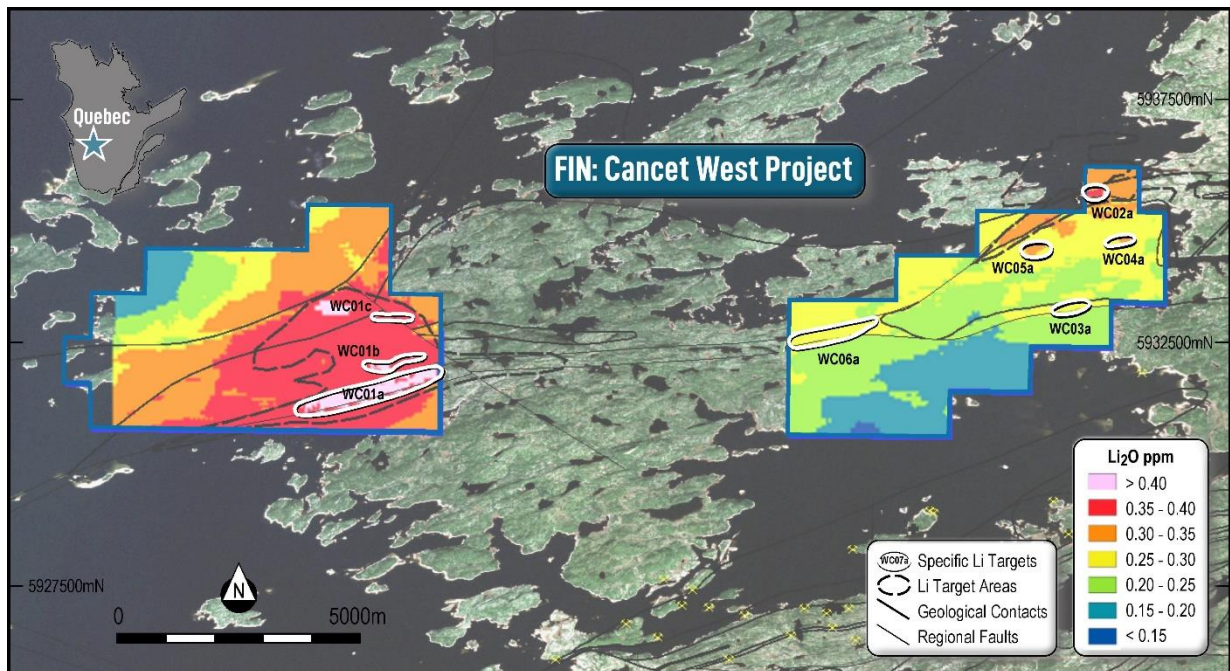


Figure 2 | Prospectivity grid for the Ross Project with identified Lithium target areas



**Figure 3 | Prospectivity grid for the Cancet West Project with identified Lithium target areas**

The Fieldwork programme is currently planned to include:

- High level outcrop mapping;
- Structural measurements from outcrop visited;
- Rock chip and soil sampling as required;
- Photographs of field work;
- XRF analysis taken in field;
- Collection of data from sample locations, mapping points, points of interest etc; and
- Analysis of samples discussed with FIN Resources prior to being sent to lab.

The Company looks forward to updating shareholders of the results from this programme in due course.

**Authorised for release by:** Jason Bontempo - Non-Executive Director

**For further information contact:**

Jason Bontempo - [info@finresources.com.au](mailto:info@finresources.com.au)

### **Cautionary Note**

The interpreted presence of pegmatite, pegmatite granite or visual spodumene does not equate to lithium mineralisation. The Company is encouraged by the geology identified by the initial work programmes within Cancet West, but no quantitative or qualitative assessment of mineralisation is possible at this stage. The Company plans to undertake field work to test for potential lithium mineralisation and laboratory analysis of rock chip samples is required to determine if the remote sensing has mapped pegmatites and pegmatite granites that have the potential to host mineralisation.

### **Competent Persons Statement**

The information in this report that relates to Exploration Results is based on information compiled by FIN and reviewed by Mr. Thomas Ridges who is a member of the Australian Institute of Mining and Metallurgy. Mr. Thomas Ridges is an employee of Sustainable Resources Pty Ltd consulting to FIN and has sufficient experience which is relevant to the style of mineralisation and type of deposit under consideration and to the activity which he is undertaking to qualify as a Competent Person as defined in the 2012 Edition of the 'Australasian Code for Reporting of Exploration Results, Mineral Resources and Ore Reserves'. Mr. Ridges consents to the inclusion in the report of the matters based on his information in the form and context in which it appears.

### **Forward looking statements**

This release may include forward-looking statements. These forward-looking statements are not historical facts but rather are based on FIN's current expectations, estimates and assumptions about the industry in which FIN operates, and beliefs and assumptions regarding FIN's future performance. Words such as "anticipates", "expects", "intends", "plans", "believes", "seeks", "estimates", "potential" and similar expressions are intended to identify forward-looking statements. Forward-looking statements are only predictions and not guaranteed, and they are subject to known and unknown risks, uncertainties and assumptions, some of which are outside the control of FIN. Actual values, results or events may be materially different to those expressed or implied in this release. Past performance is not necessarily a guide to future performance and no representation or warranty is made as to the likelihood of achievement or reasonableness of any forward-looking statements or other forecast. Given these uncertainties, recipients are cautioned not to place reliance on forward looking statements. Any forward-looking statements in this release speak only at the date of issue of this release. Subject to any continuing obligations under applicable law and the ASX Listing Rules, FIN does not undertake any obligation to update or revise any information or any of the forward-looking statements in this release or any changes in events, conditions or circumstances on which any such forward looking statement is based. Actual values, results, interpretations or events may be materially different to those expressed or implied in this announcement.