

CEILING LITHIUM

Exploration in the heart of world-class lithium district of Eeyou Istchee James Bay, Quebec

ASX: RB6

October 2023

THIS PRESENTATION (the "presentation") was prepared as a summary overview only of the current affairs of Rubix Resources Ltd ("Rubix", or the "Company") and is for information purposes only. It has been prepared for the purpose of providing general information Rubix Resources Ltd. It should not be considered as an offer, invitation, solicitation or recommendation to subscribe for or purchase any securities in Rubix in any jurisdiction. It is not recommended that any person makes an investment decision in relation to Rubix in reliance on this presentation material. This presentation does not constitute financial product advice and has been prepared without taking into account the recipient's investment objectives, financial circumstances or particular needs and the opinions and recommendations in this presentation are not intended to represent recommendations of particular investments to particular persons. Recipients should seek professional advice when deciding if an investment is appropriate. All securities transactions involve risks, which include (among others) the risk of adverse or unanticipated market, financial or political developments.

This presentation contains forecasts and forward-looking statements. Such statements are predictions only based on available data which may be unreliable and is subject to inherent risks and uncertainties. Investors are cautioned that forward-looking statements are not guarantees of future performance and accordingly investors are cautioned not to put undue reliance on forward-looking statements due to the inherent uncertainty therein, which could cause actual values, results, performances or achievements to differ materially from those expressed, implied or projected in this presentation. This overview does not purport to be all-inclusive or to contain all information which its recipients may require in order to make an informed assessment of the project prospects. Each of Rubix, its officers, employees and advisers expressly disclaims any responsibility for the accuracy or completeness of the material contained in this presentation and excludes all liability, direct, indirect or consequential for any loss or damage which may be suffered by any person as a consequence of any information in this presentation or any error or omission there from. Rubix accepts no responsibility to update any person regarding any inaccuracy, omission or change in information in this presentation.

COMPETENT PERSON STATEMENTS The information in this presentation that relates to Geology and Mineral Resources is based on information compiled and/or reviewed by Dr Casey Blundell, who is a Member of the Australasian Institute of Geologists (AIG). Dr Blundell has sufficient experience which is relevant to the style of mineralisation and the deposit under consideration, and to the activity which he is undertaking to qualify as a Competent Person as defined in the 2012 edition of the Australasian Code for Reporting of Exploration Results, Mineral Resources and Ore Reserves (the JORC Code). Dr Blundell is Exploration Manager for the Company.

The Company is not aware of any new information or data that materially affects the information in the relevant market announcements. All material assumptions and technical parameters underpinning the relevant market announcements continue to apply and have not materially changed.

The Australian Securities Exchange has not reviewed and does not accept responsibility for the accuracy or adequacy of this release.

FORWARD LOOKING STATEMENTS This release contains certain forward looking statements. Often, but not always, forward looking statements can generally be identified by the use of forward-looking words such as "may", "will", "except", "intend", "plan", "estimate", "anticipate", "continue", and "guidance", or other similar words and may include, without limitation, statements regarding plans, strategies and objectives of management, anticipated production and expected costs. Indications of, and guidance on future earnings, cash flows, costs, financial position and performance are also forward-looking statements. Forward looking statements, opinions and estimates included in this announcement are based on assumptions and contingencies which are subject to change, without notice, as are statements about market and industry trends, which are based on interpretation of current market conditions. Forward looking statements are provided as a general guide only and should not be relied on as a guarantee of future performance. Forward looking statements may be affected by a range of variables that could cause actual results or trends to differ materially.

FORWARD-LOOKING ASSUMPTIONS/ESTIMATES in this presentation reflects Rubix Resources' current views with respect to future events and are necessarily based upon a number of assumptions and estimates that, while considered reasonable by Rubix, are inherently subject to significant business, economic, competitive, political and social uncertainties and contingencies. Many factors, both known and unknown, could cause actual results, performance or achievements to be materially different from the results, performance or achievements that are or may be expressed or implied by such forward-looking information contained in this presentation and documents incorporated by reference, and we have made assumptions based on or related to many of these factors. Such factors include, without limitation: fluctuations in spot and forward markets for metals and certain other commodities (such as natural gas, fuel oil and electricity); restrictions on mining in the jurisdictions in which Rubix operates; laws and regulations governing our operation, exploration and development activities; its ability to obtain or renew the licenses and permits necessary for the operation and expansion of its existing operations and for the development, construction and commencement of new operations; risks and hazards associated with the business of mineral exploration, development and mining (including environmental hazards, potential unintended releases of contaminants, industrial accidents, unusual or unexpected geological or structural formations, pressures, cave-ins and flooding); inherent risks associated with tailings facilities and heap leach operations, including failure or leakages; the speculative nature of mineral exploration and development; the inability to determine, with certainty, production and cost estimates; inadequate or unreliable infrastructure (such as roads, bridges, power sources and water supplies); environmental regulations and legislation; the effects of climate change, extreme weather events, water scarcity, and seismic events, and the effectiveness of strategies to deal with these issues; risks or exploration titles or claims or rights, which constitute most of its property holdings; Rubix's ability to complete and successfully integrate acquisitions; increased competition in the mining industry for properties and equipment; limited supply of materials and supply chain disruptions; relations with and claims by indigenous populations; relations with and claims by local communities and non-governmental organizations; the effectiveness of its internal control over financial reporting; claims and legal proceedings arising in the ordinary course of business activities. Forward-looking information is made based on management's beliefs, estimates and opinions and are given only as of the date of this presentation. Rubix Resources Ltd undertakes no obligation to update forward-looking information if these beliefs, estimates and opinions or other circumstances should change, except as may be required by applicable law. Mineral exploration and development are highly speculative and are characterized by a number of significant inherent risks, which may result in the inability to successfully develop our projects for commercial, technical, political, regulatory or financial reasons, or if successfully developed, may not remain economically viable for their mine life owing to any of the foregoing reasons, among others. There is no assurance that the Company will be successful in achieving commercial mineral production and the likelihood of success must be considered in light of the stage of operations.

Current and potential investors should not place undue reliance on forward-looking statements due to the inherent uncertainty therein. All forward-looking information is expressly qualified in its entirety by this cautionary statement.

Management cautions that past results or discoveries on nearby or adjacent properties (i.e. Mia, Corvette) are sourced from publicly available information, have not been independently verified by the Company and may not necessarily be indicative to the presence of mineralization on the Company's properties.

Rubix Resources has a diverse portfolio of projects across critical minerals in world-class jurisdictions



Estimated average metal use per vehicle:



Based on an estimated 53kWh global average battery pack size.

Source: CRU 'Green Scenario'

rubix
RESOURCES LIMITED

Corporate Summary

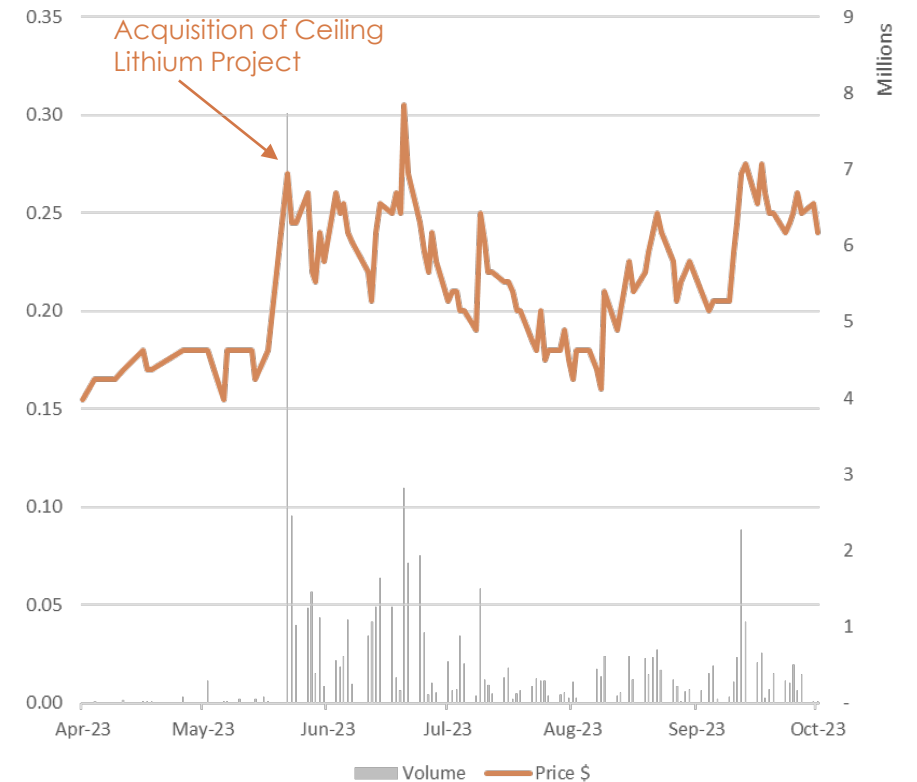
CAPITAL STRUCTURE

ASX Ticker	RB6
Shares on issue	61.45M
Options	35.48M
Performance rights	25.00M
Share price (3 Oct 23)	A\$0.24
MCAP	A\$14.75M
Cash	A\$3.70M
EV	A\$11.26M

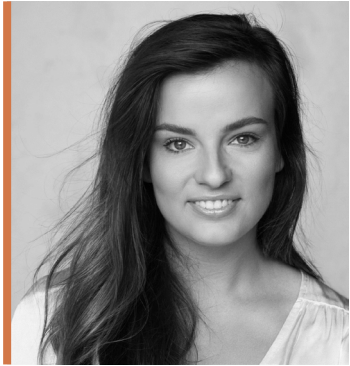
SUBSTANTIAL SHAREHOLDERS

Kitara Investments	9.86%
DG Resources Management	9.15%

Share Price Performance



Technical Team



Dr Casey Blundell PhD, MAIG
Chief Executive Officer

Casey has a PhD in applied Structural Geophysics and Structural Geology, with expertise in complexly deformed geologic terranes. She brings to Rubix a broad and complementary skillset including structural interpretation of geophysical data (magnetics, gravity and EM) and structural mapping, with additional experience in whole-rock major and trace-element geochemistry and isotope systematics (U-Pb and Hf). This diverse skill set is well-suited to both project development and generation from regional to project scale.

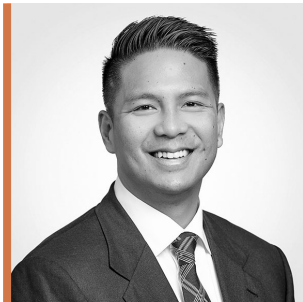


Jody Dahrouge
DG Resource Management (DGRM)

Jody Dahrouge is a professional geologist with more than 25 years in the mineral exploration and mining business. He has a strong background in project generation and exploring early stage exploration. He and/or the team at Dahrouge Geological are directly responsible, individually or as part of the team, for the 'conceptualizing - project generation' of numerous grass roots ideas, which ultimately resulted in significant mineral discoveries.

DGRM specializes in the earliest stages of exploration by acquiring, compiling and reviewing historic geologic and geophysical data sets in order to generate a "project concept". DGRM's approach and perspective on mineral exploration has resulted in numerous grass roots discoveries, and provides valuable insights into what makes a mineral exploration project worthy of grass-roots or ongoing exploration. With a unique focus in Western Canada, DGRM specializes in a variety of commodities, which include: Base Metals, Coal, Gold, Industrial Metals and Minerals, PGE's, and Uranium.

Board of Directors



Mr Eddie King, Executive Chairman

Mr King holds bachelor's degrees in Commerce and Engineering (Mining Systems) from The University of Western Australia. His experience includes investment banking with a focus on resource projects and managing capital raisings for ASX listed companies. He currently sits on the board of Ragnar Metals, Eastern Iron Limited, M3 Mining Limited, and Queensland Pacific Metals Limited.



Mr Colin Locke, Non-Executive Director

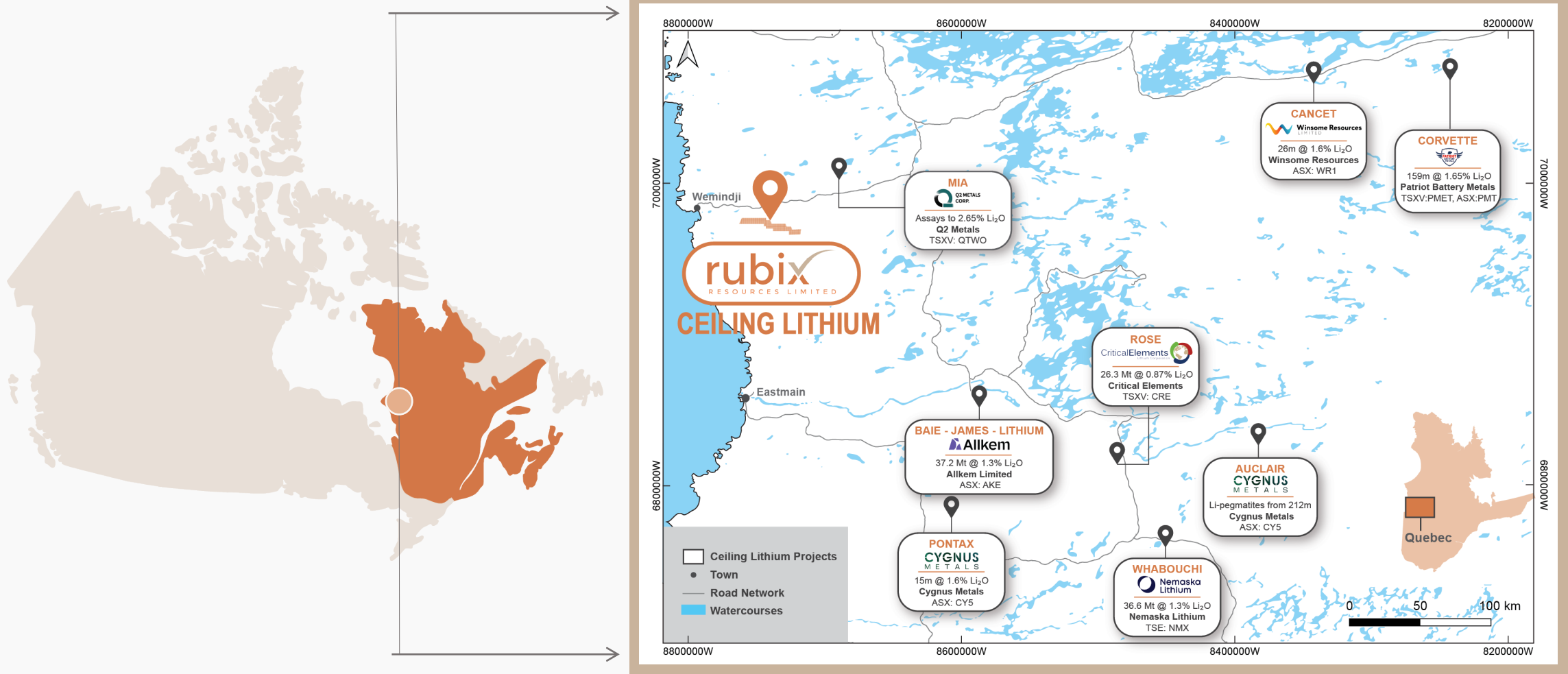
Mr Locke brings 30 years of experience in business management, mining, and financial services, with involvement in capital raising and mineral exploration across multiple countries. He previously served as the Executive Chairman of Aston Minerals Limited from 2011 to 2013. Currently, he is the Chairman of Krakatoa Resources Ltd and serves as Executive Chair of the Chamber of Australia Africa Mining and Investment (CHAAMI) (NFP).



Mr David Palumbo, Non-Executive Director

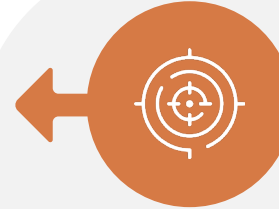
Mr Palumbo has 15 years of experience in company secretarial, corporate advisory, and financial management roles. He is the Head of Corporate Compliance at Mining Corporate Pty Ltd, involved in various corporate transactions. He currently serves as company secretary for several ASX listed companies and is a Non-Executive Director of Krakatoa Resources Limited and Albion Resources Limited.

James Bay, Canada: Emerging World-Class Lithium District

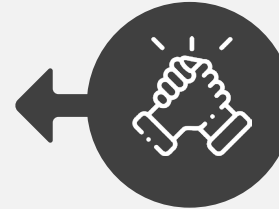




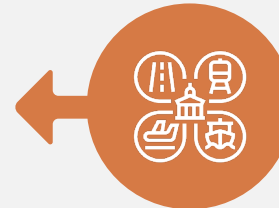
James Bay Lithium District



The James Bay Lithium District is one of the world's leading hard rock lithium locations hosting several known pegmatite outcrops, despite minimal modern exploration over the last 20 years



Quebec government is highly supportive of mining companies including providing tax incentives



Location provides access to high quality infrastructure, hydro-power, sealed roads as well as skilled labour



The region is ideally located to service North American lithium-ion battery markets

Significant Landholding, Prospective Region

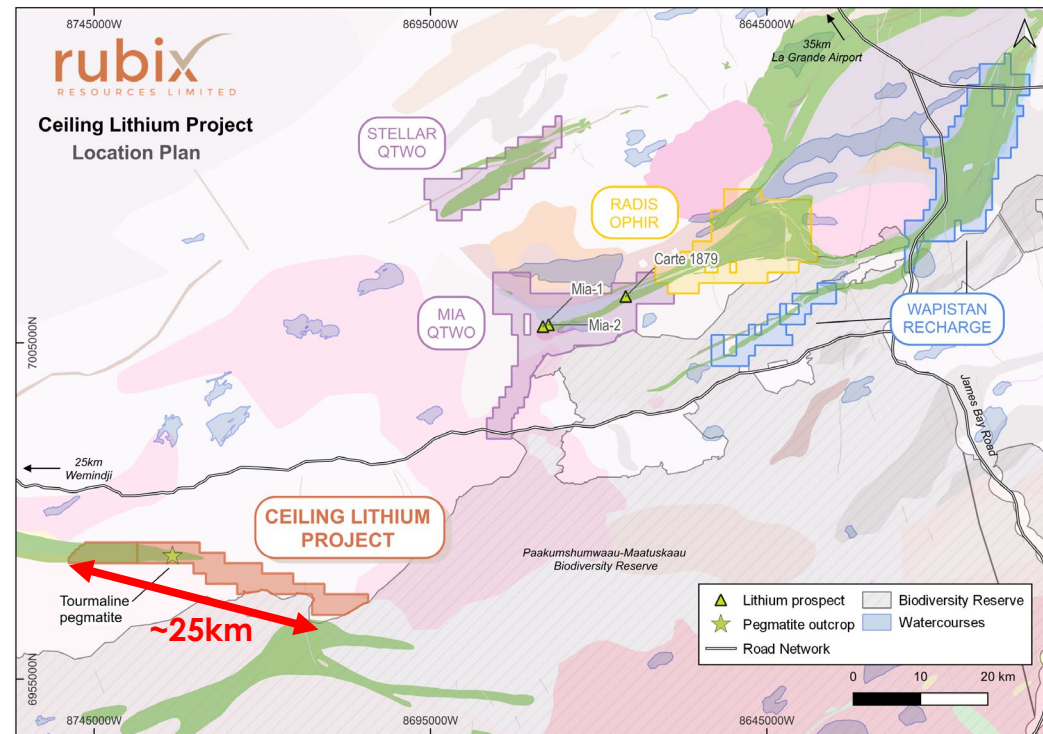
The Ceiling Lithium Project



Comprises **101 active mineral claims** over a contiguous property covering an area of >5,000 hectares



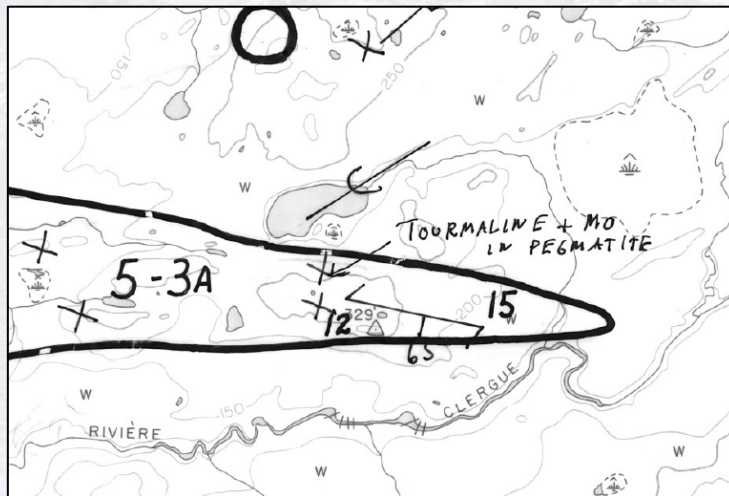
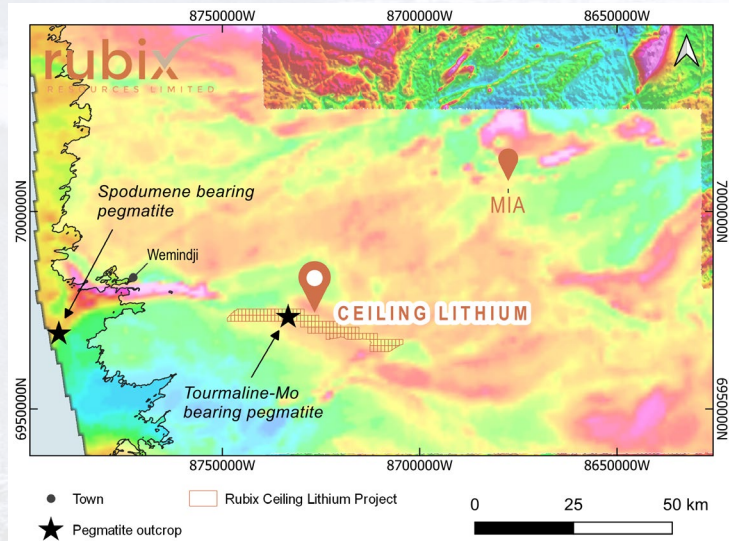
Encompasses **~25km strike-length** of the Wemindji Greenstone Belt



Benefits from nearby road access to the Wemindji community (~4.5km away) and access to hydro power



To the south, **pegmatite outcrops** are documented within the Paakumshumwaau-Maatuskaau Biodiversity Reserve* (*protected in perpetuity as of 2020)



Greenfields Exploration

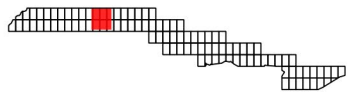
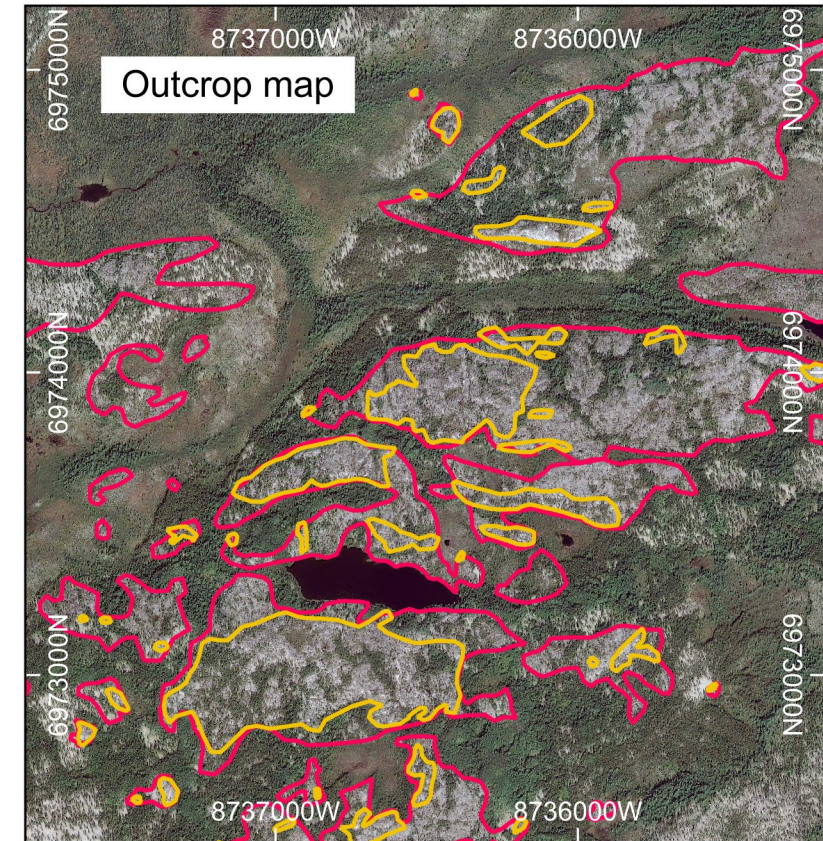
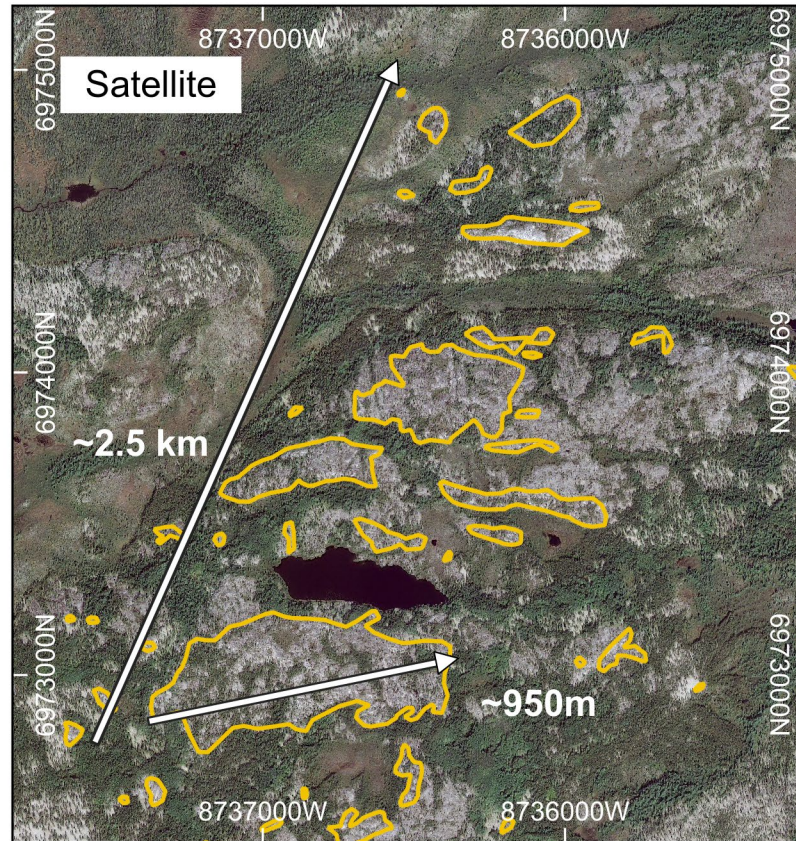
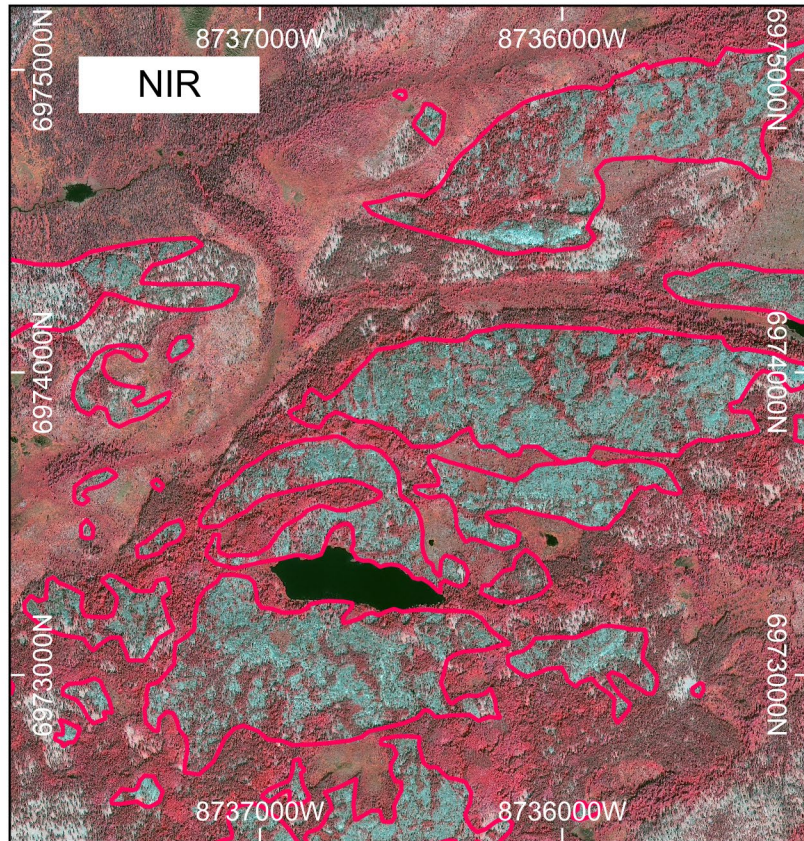
Wemindji Greenstone Belt (WGB)
forms a relative magnetic low
flanked by magnetic highs

Unlike most of Quebec, there is only
limited high-resolution geophysical
data over this area

*New data due to be collected in 2023 by
MERN

Project area is otherwise comparatively
under-explored - mapping at a
regional scale only, with very few
outcrops or geochemical analyses
mapped by MERN

Orthoimagery (at 0.5m resolution) shows several promising areas of granitic (grey) and possibly pegmatitic outcrop (bright white-grey) from which to commence initial exploration¹

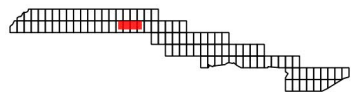
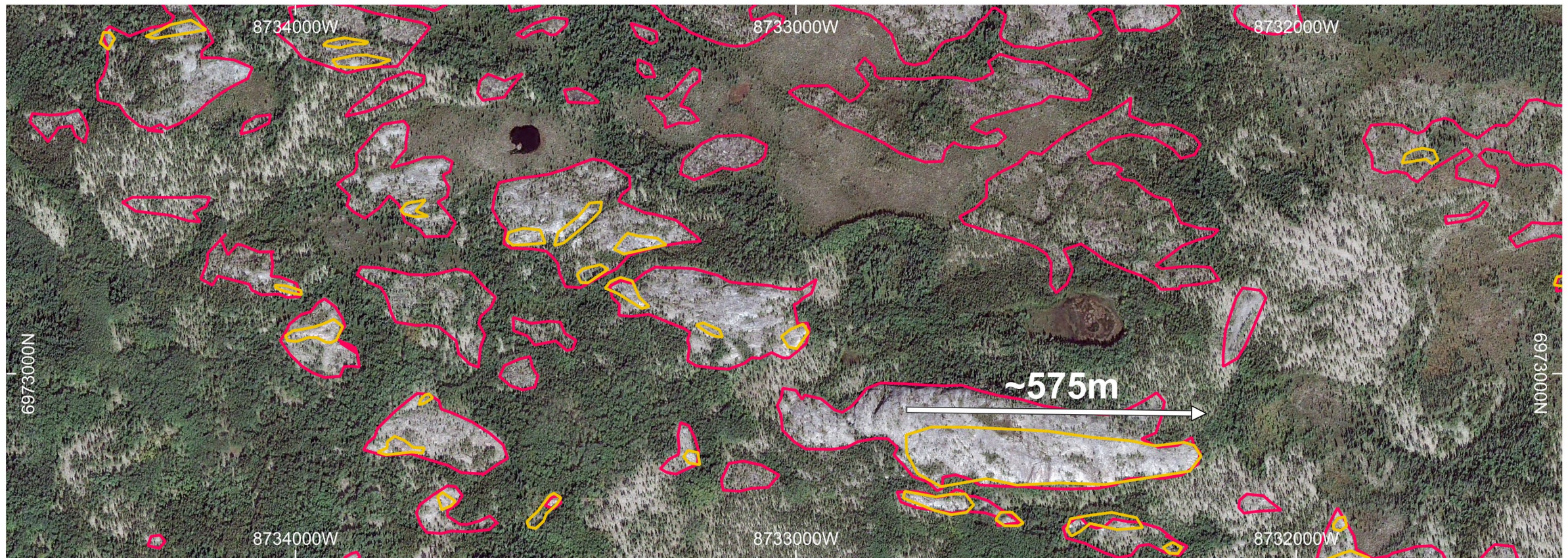


- Pegmatites (interpreted) - white-rocks
- Outcrop (interpreted) - NIR targeting

0 0.25 0.5 km



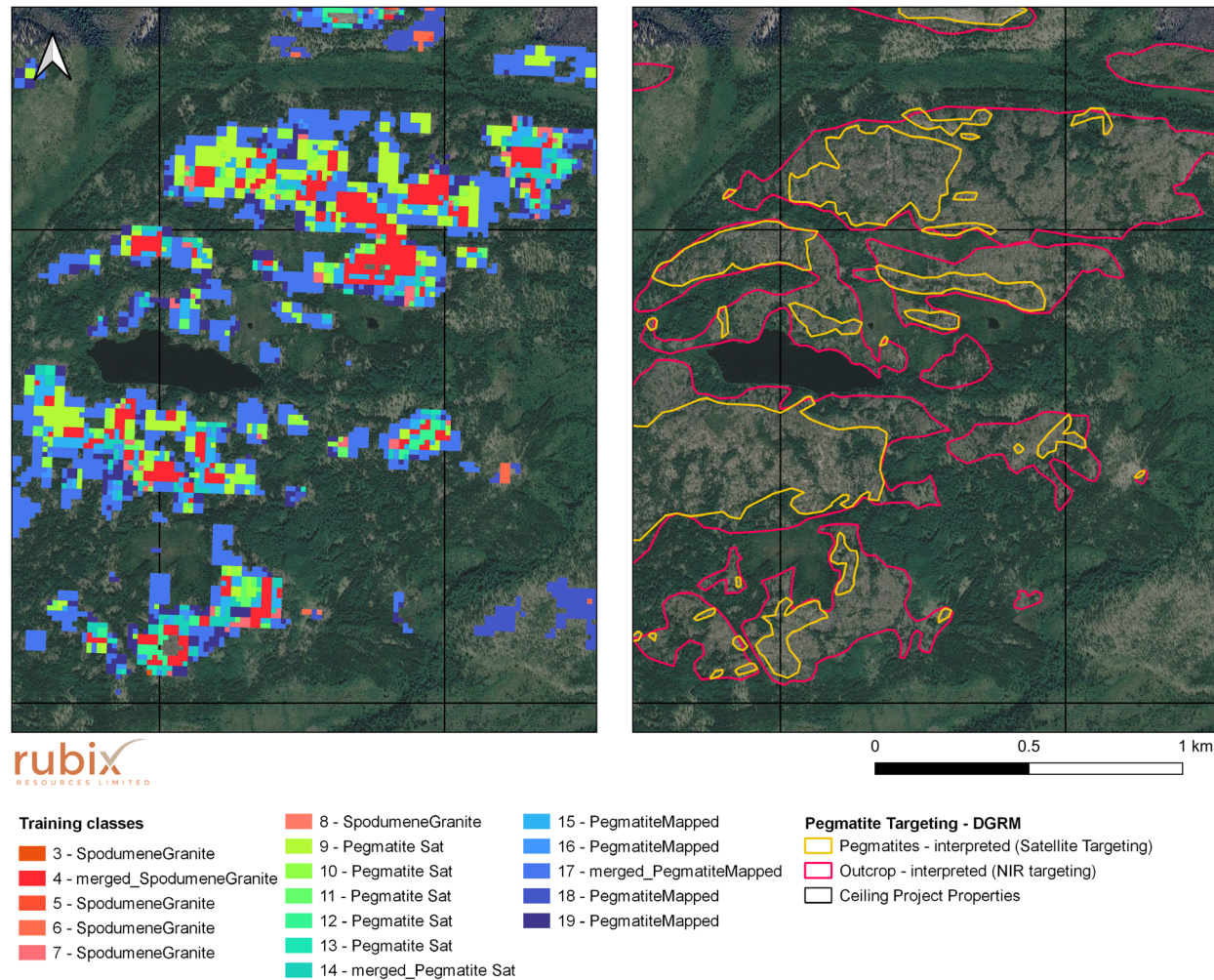
Orthoimagery (at 0.5m resolution) shows several promising areas of granitic (grey) and possibly pegmatitic outcrop (bright white-grey) from which to commence initial exploration¹



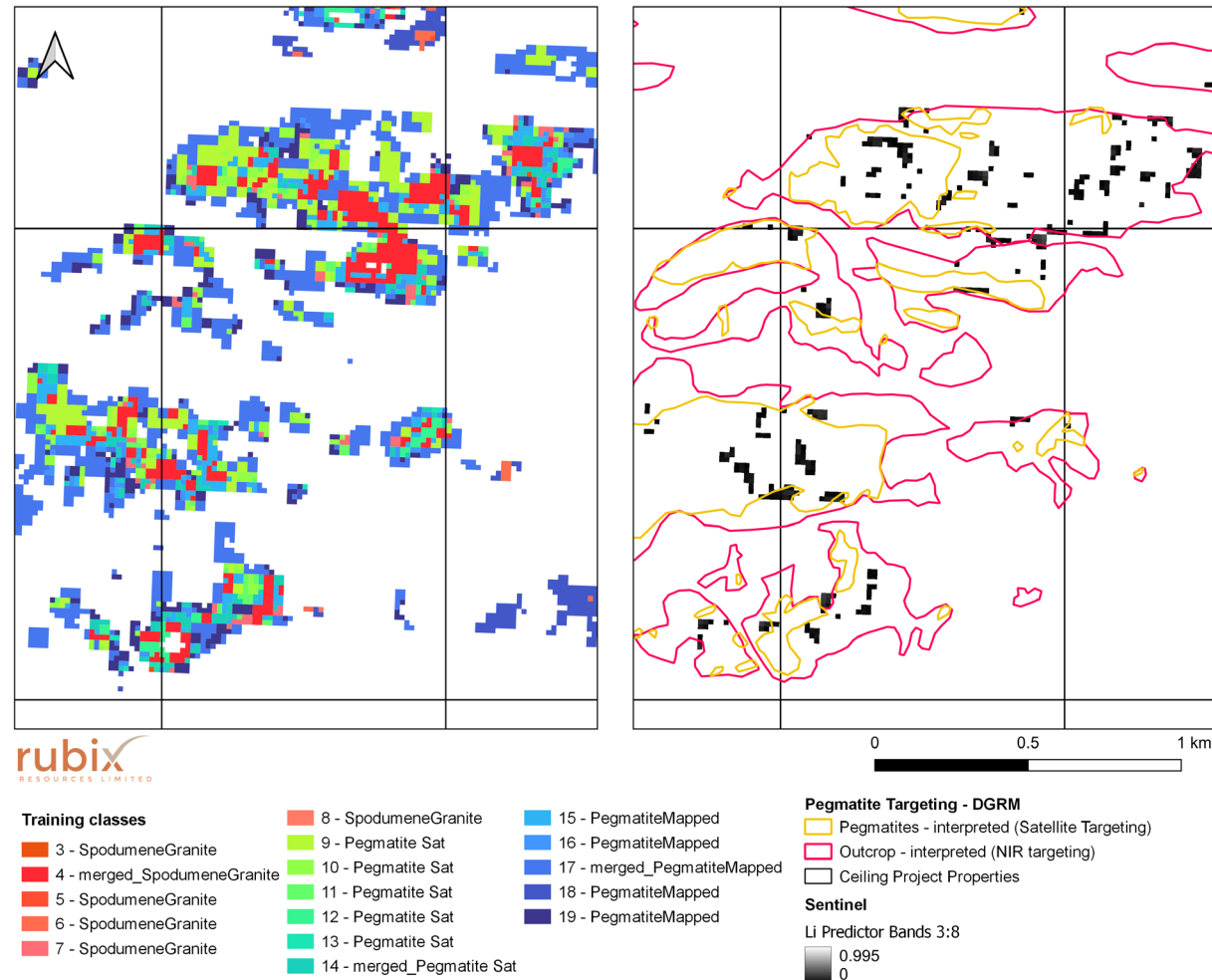
- Pegmatites (interpreted) -white-rocks
- Outcrop (interpreted) -NIR targeting



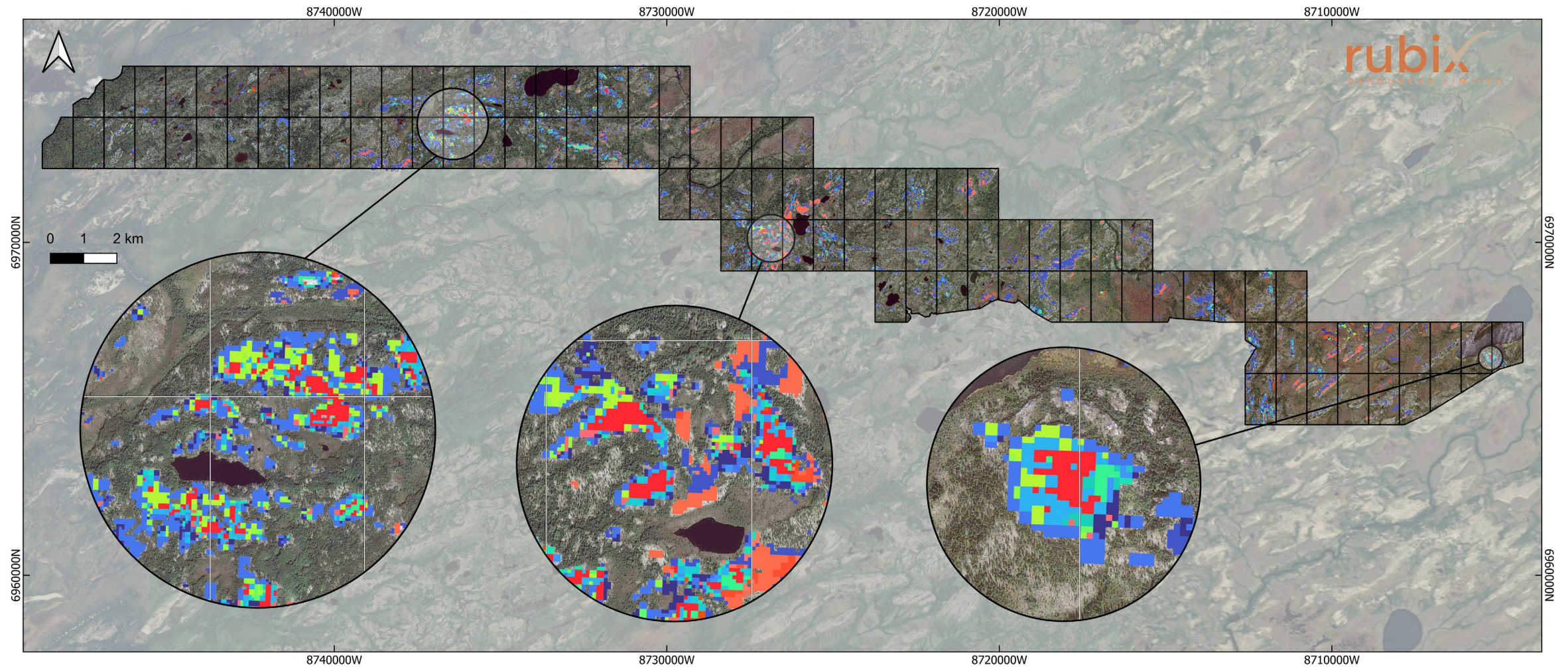
Hyperspectral mapping and Li prediction shows good correspondence with previous satellite interpretation and suggest that the Ceiling Project has numerous areas which may be prospective for lithium.²



Hyperspectral mapping and Li prediction shows good correspondence with previous satellite interpretation and suggest that the Ceiling Project has numerous areas which may be prospective for lithium.²

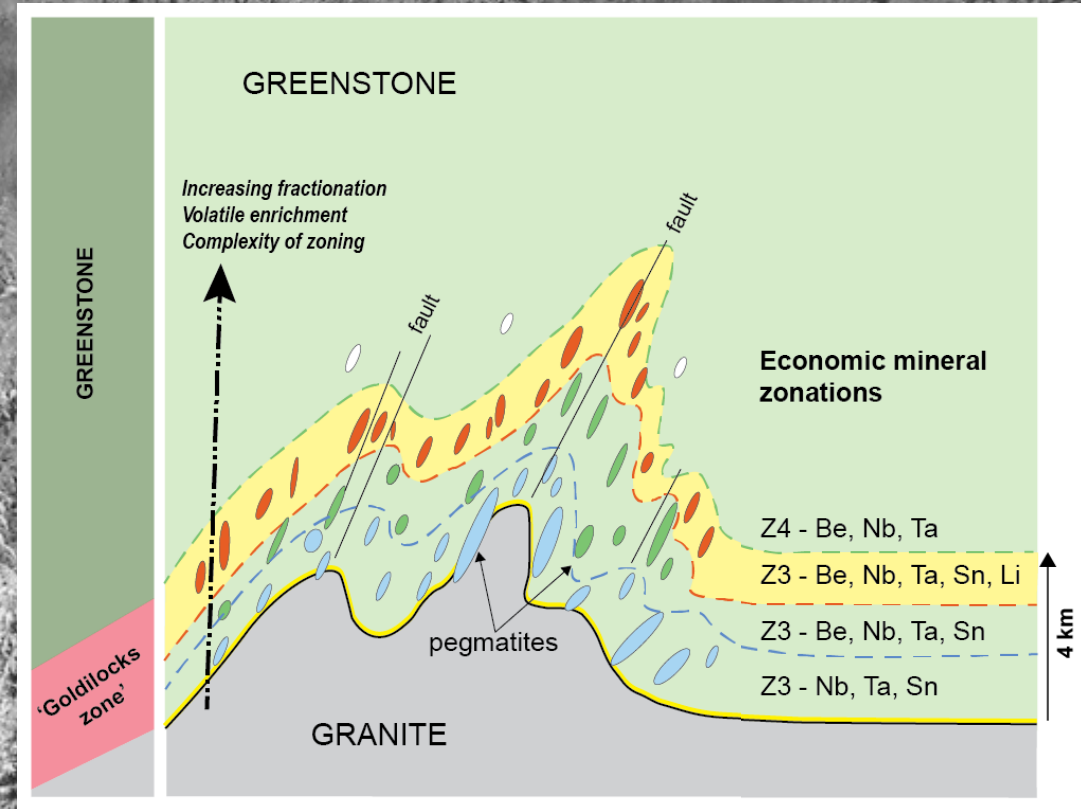


Hyperspectral mapping and Li prediction shows good correspondence with previous satellite interpretation and suggest that the Ceiling Project has numerous areas which may be prospective for lithium.²



Regional Geology

- Prospective regional geology known to host Li-pegmatite mineralisation
 - Yasinski Greenstone Belt (Groupe de Yasinski)
 - Granite du Vieux-Comptoir (Avcr)
 - Pink granites and pegmatite with mica, tourmaline and garnet, sometimes beryl
 - Same mapped lithology as Q2 (Mia) and PMET (Corvette)
- The Vieux-Comptoir granitic suite is associated with lithium-pegmatite mineralisation



In Good Company at James Bay



Corvette – Patriot Battery Metals

- Market cap: ~\$1.5B CAD
- CV5 mineral resource of 109.2 Mt @ 1.42% Li₂O and 160ppm Ta₂O₅ (Inferred) reported with a cut-off grade of 0.4% Li₂O*³
- CV Lithium Trend spans more than 25km with 70+ pegmatite outcrops identified.
- Located near Canadian infrastructure allowing potential low-carbon emission Li production.
- Notable lithium findings include 108.0m @ 2.44% Li₂O (Nova Zone)⁴ and 156.9m @ 2.12% Li₂O (CV5)⁵.



James Bay Project – Allkem

- Market cap: ~\$9B
- Mineral resource estimate of 110.2 Mt @ 1.30% Li₂O, including 54.3 Mt at 1.30% Li₂O (Indicated) and 55.9 Mt at 1.29% Li₂O (Inferred)^{6^}
- Located ~175km to the south-southeast of the Ceiling Project
- Pegmatites are hosted within a “deformation corridor” over a strike length of 5km, of which 2.8km has been drill tested.

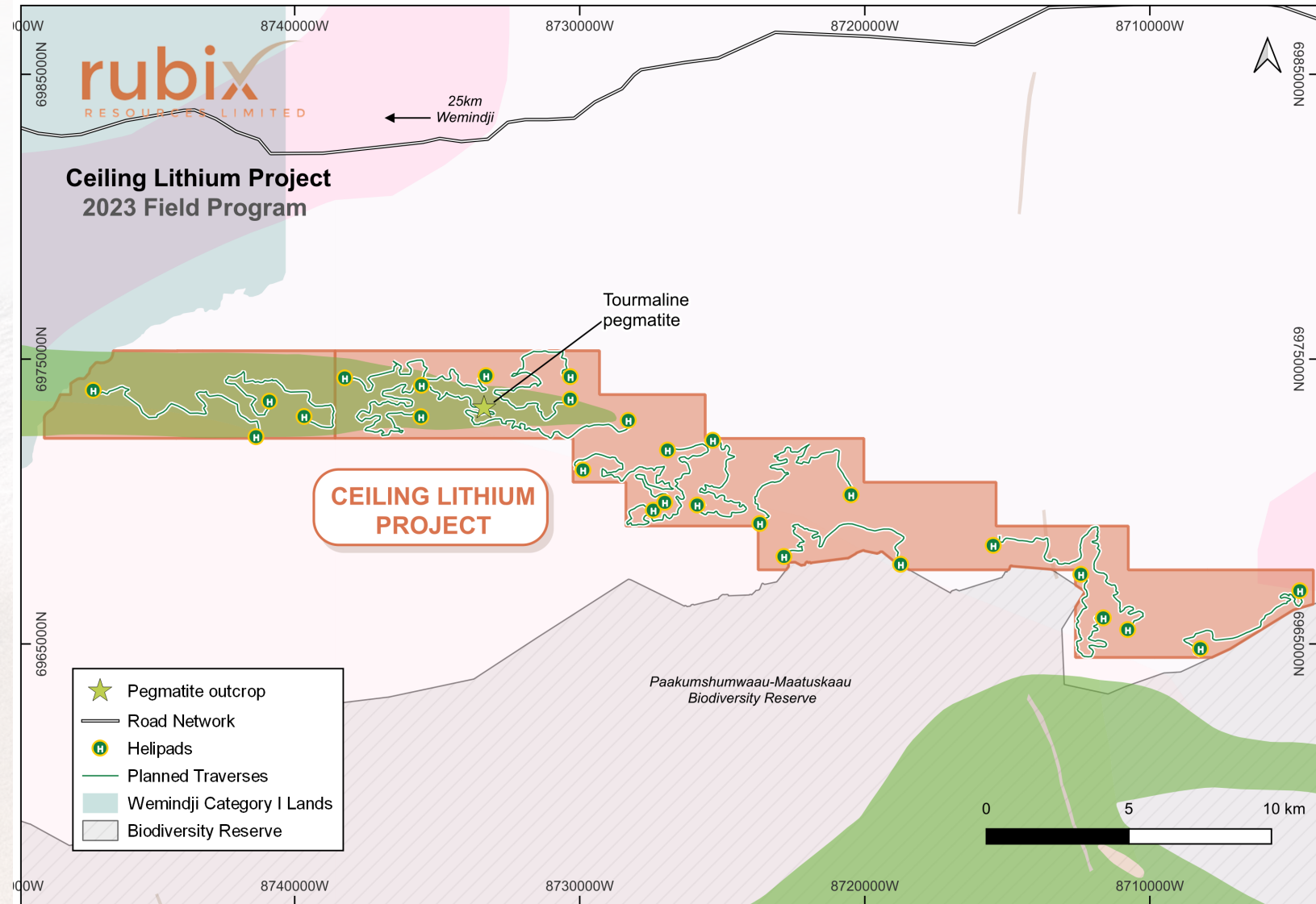


The Mia Project – Q2 Metals

- Market cap: ~\$75m
- The project is located in the Yasinski Greenstone Belt, just 50km to the northeast.
- Spodumene confirmed at Mia Li-1 with 18 samples having an average grades of 2.65% Li₂O⁷.
- Spodumene confirmed at Carte Zone, with grab samples of 2.01%, 1.57% and 1.04% Li₂O⁷.
- An unsampled pegmatite trend of 7km identified between Mia Li-1 and Mia-Li-2 and Carte 1879.

Ceiling Timeline: Next Steps

- Helicopter-supported site visit and field campaign commencing October 19th 2023 with Dahrouge Geological Consulting
- Geological mapping and sampling, focus on Priority areas (90-100 samples)
- Results from LiDAR & high-resolution orthoimagery collection
- Assay results from fieldwork expected Q4 2023
- Q1 2024 follow-up fieldwork and/or drill testing



Rubix Australian Projects

1

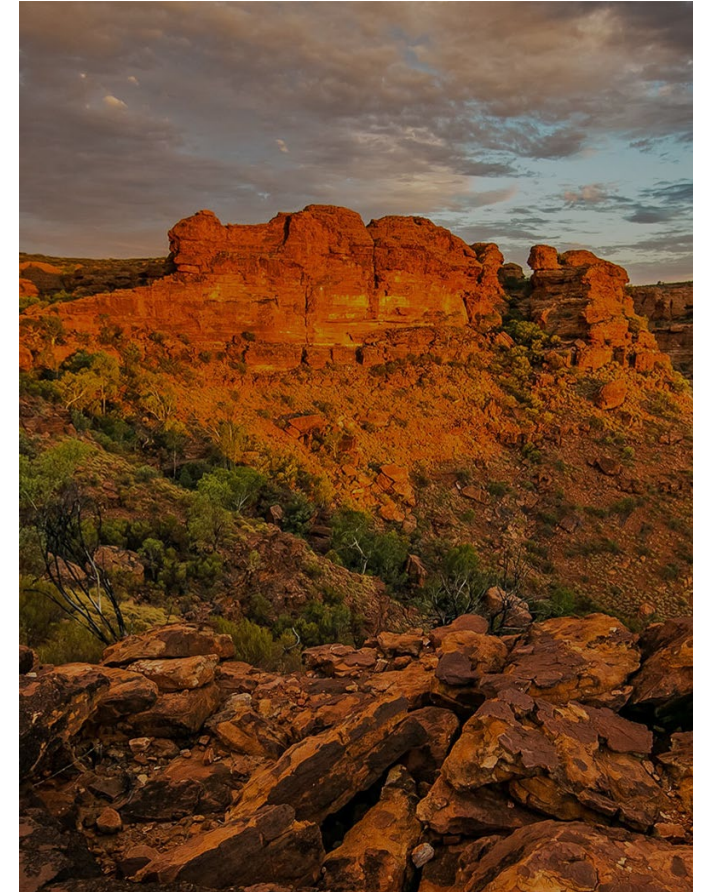
PAPERBARK

100% owned with Pb-Zn defined Exploration Target (the JB Zone) and copper potential. Upcoming exploration activities will seek to better understand the scale of the JB Zone target and investigate the potential of the Tasman Prospect to the east, in the hanging wall of the Tasman Fault.

2

LAKE JOHNSTON

Encouraging Ultrafine+ soil geochemical results suggest potential for fragments of the Lake Johnston Greenstone Belt within the project area, including rock units analogous to those hosting nickel mineralisation at Maggie Hayes and Emily Ann.



Ceiling Lithium Project Highlights

Premier Lithium Region

Ceiling Lithium Project is located in the world-renowned lithium district of James Bay, Quebec, Canada.

Expertise in Execution

The project leverages the expertise of DG Resource Management (also discovered/vended in Patriot's Corvette Lithium Project) for fieldwork execution and potential drill target identification.

Favourable Project Location

Strategically positioned within the underexplored Wemindji Greenstone Belt, the project benefits from local road access and hydro power.



Significant Project Scale

The project comprises over 5,000 hectares with 101 active mineral claims, covering a 25km strike-length of the Wemindji Greenstone Belt.

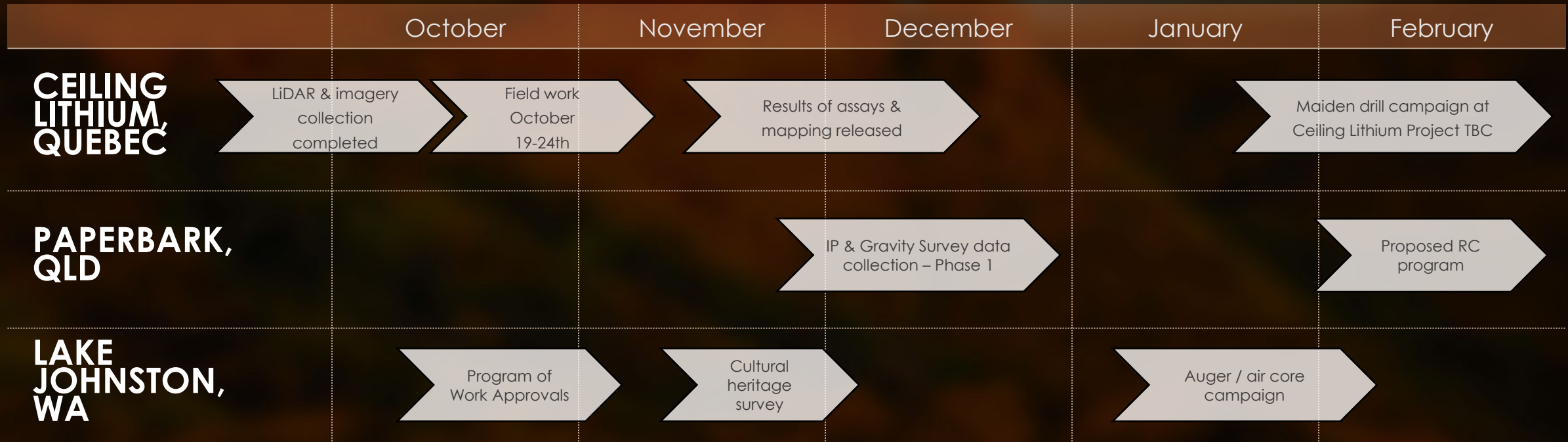
Potential for Multiple Commodities

Besides lithium, there is potential for gold deposits within the project site, offering resource diversification.

Drilling Funded

Fully funded to complete a maiden drilling campaign.

Project Timeline through CY23-24





RUBIX RESOURCES LIMITED

contact@rubixresources.com.au

RubixResources.com.au

ASX: RB6

References

1. 3 August 2023 "Potential Pegmatite Outcrops Identified in Satellite Imagery"
2. 7 September 2023 "Encouraging Hyperspectral Mapping Results at Ceiling Lithium"
3. Patriot Battery Metals release dated 30 July 2023 "Patriot Announces the Largest Lithium Pegmatite Resource in the Americas at CV5, Corvette Property, Quebec, Canada"
4. Patriot Battery Metals announcement July 10 2023 "PATRIOT ANNOUNCES FINAL CORE ASSAY RESULTS FROM ITS 2023 WINTER DRILL PROGRAM, INCLUDING 108.0 M AT 2.44% LI₂O, AT THE CV5 PEGMATITE, CORVETTE PROPERTY, QUEBEC, CANADA"
5. Patriot Battery Metals August 2023 Corporate Presentation
6. Alkem ASX release date 11 August 2023 "JAMES BAY MINERAL RESOURCE INCREASED BY 173% TO 110.2 MILLION TONNES"
7. Q2 Metals September 2023 Investor Presentation