

Impact Minerals Limited

The Arkun Project, WA

DISCLAIMER

This presentation contains forward looking statements that are subject to risk factors associated with resource businesses. While all due care has been taken in preparing the report, projections may be affected by a variety of variables and changes in underlying assumptions which could cause actual results or trends to differ materially, including but not limited to: price fluctuations, actual demand, currency fluctuations, drilling and production results, reserve estimates, loss of market, industry competition, environmental risks, physical risks, legislative, fiscal and regulatory developments, economic and financial market conditions in various countries and regions, political risks, project delay or advancement, approvals and cost estimates. Ideas, opinions, conclusions, and recommendations expressed in this report by the vendors are made by personnel using their professional judgment. The vendors do not represent or warrant that these will prove complete or accurate, and any person or corporation acting in response to this report must make their own enquiries and exercise their own professional judgement. The vendors are not liable for any loss or damage (however caused) incurred or suffered by a person or corporation acting on the basis of this report. All data and third-party figures presented are publicly available and referenced where applicable.

The information contained in this Presentation is for information purposes only. It is intended only for those persons to whom it is delivered personally by or on behalf of the vendors. The information in this Presentation is a general background and does not purport to be complete or to provide all information that an investor should consider when making an investment decision or that would be required in a prospectus or product disclosure statement prepared in accordance with the requirements of the Corporations Act 2001 (Cth). It has been prepared by the vendors with due care but no representation or warranty, express or implied, is provided in relation to the fairness, accuracy or completeness of the information. Statements in this Presentation are made only as of the date of this Presentation unless otherwise stated and the information in this Presentation remains subject to change without notice.

About Impact Minerals (ASX:IPT)

Board of Directors and Management

Non-Executive Chairman: Peter Unsworth
Managing Director: Dr Mike Jones
Non-Executive Director: Dr Frank Bierlein
Non-Executive Director: Paul Ingram
Exploration Manager: James Cumming
Lake Hope Manager: Roland Gotthard

Capital Structure

Listed on ASX	November 2006
Shares on Issue	2,864 million
Options	298M unlisted 158M IPTOB
Share Price	1.3c
Market Cap	\$37 million
Cash	A\$2.98 million

Shareholders

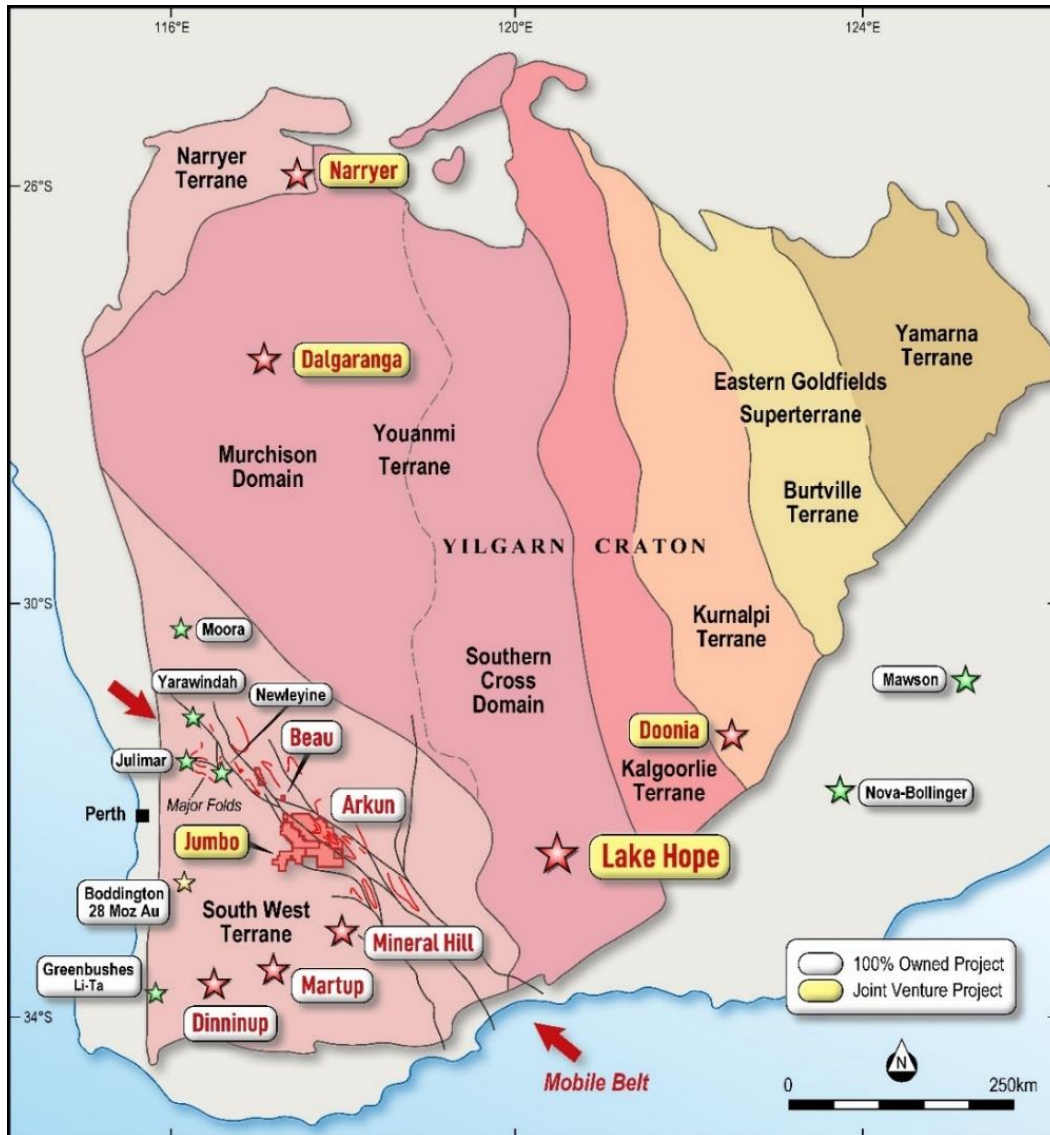
Bunnenberg Family	15.7%
ABC Beteiligungen	7.7%
Directors	1.1%
Top 20	41%
Top 50	49%
No of Shareholders	4,500



1 Year
Share
price

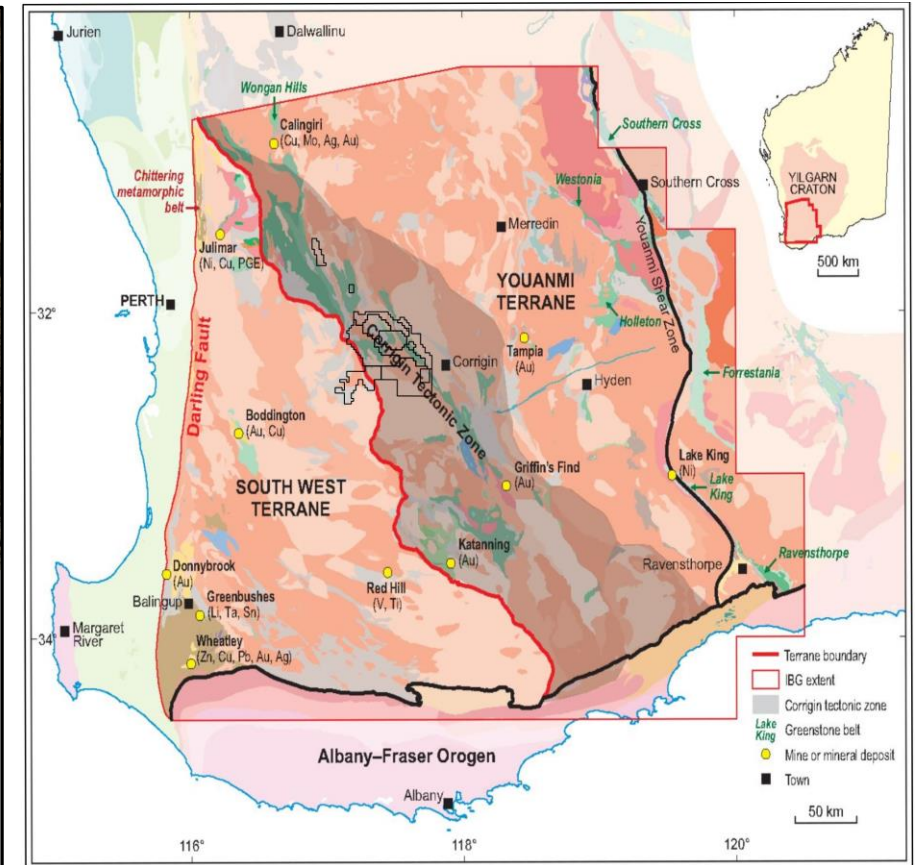
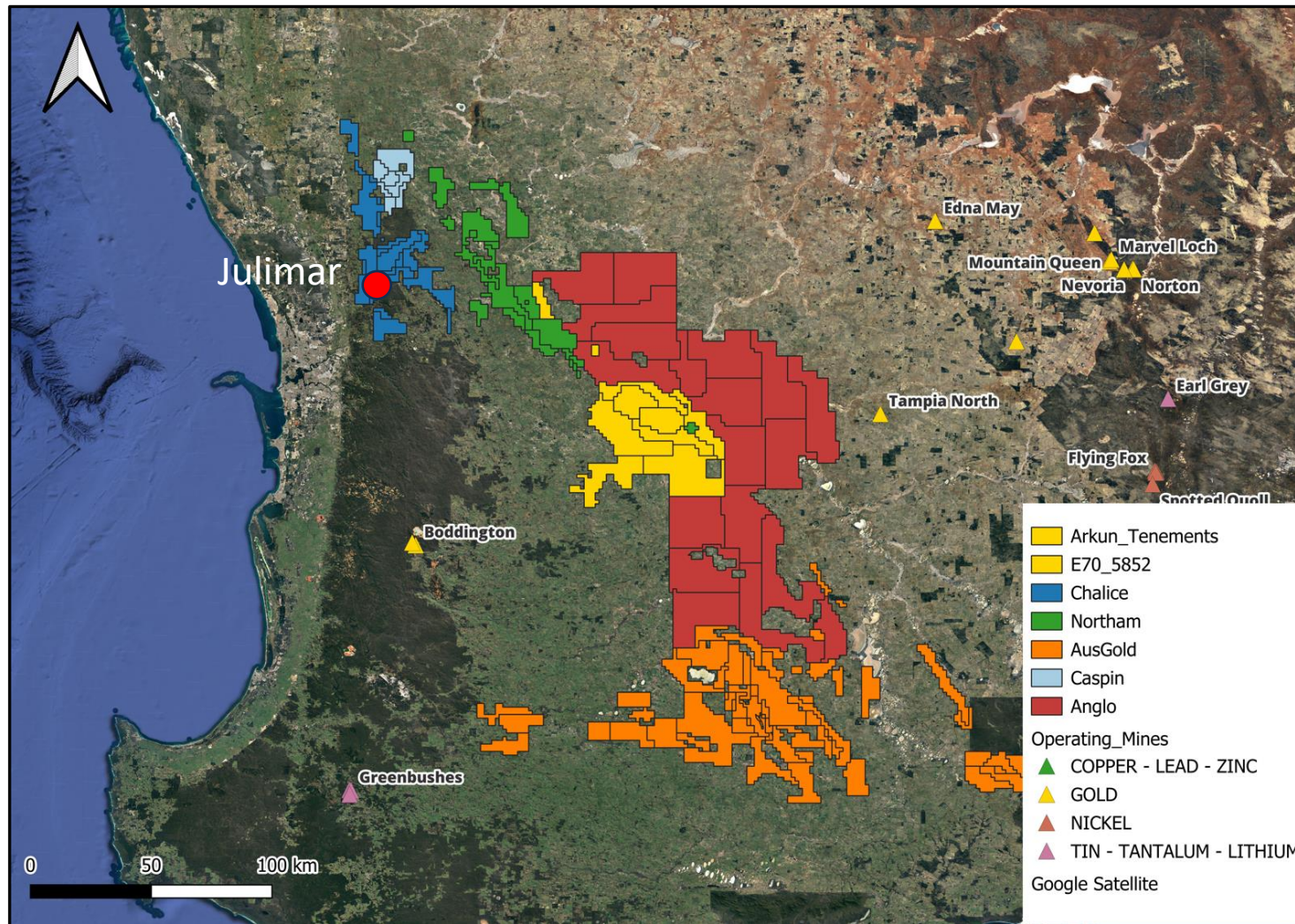
impact.
MINERALS

Building a battery metals fortress in WA



- 10 projects 4,600 square km
- Akun Project 2500 sq km.
- Arkun-Beau-Dinninup-Martup-Mineral Hill 100%
- Five JV's 80%-20% free carried to DtM

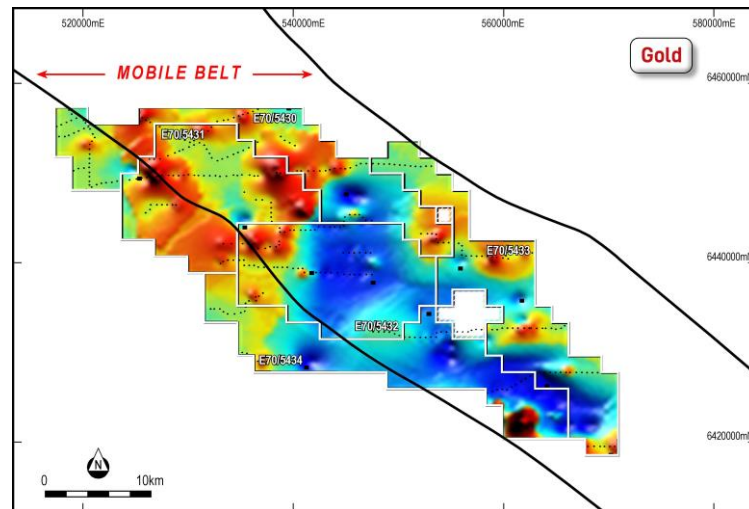
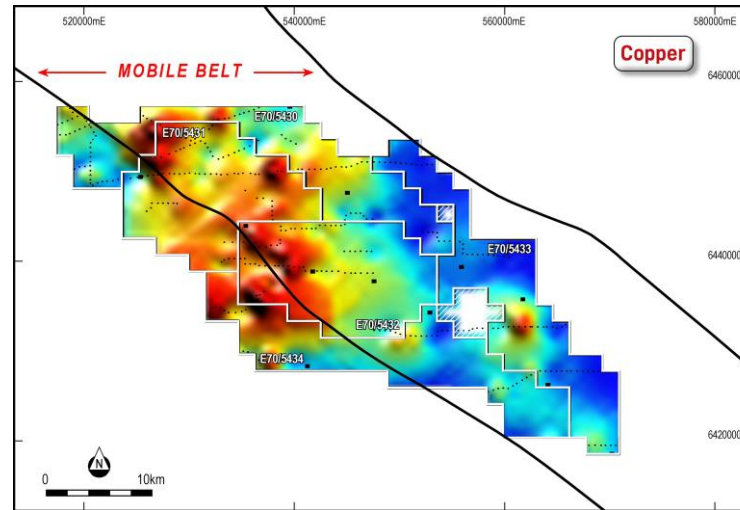
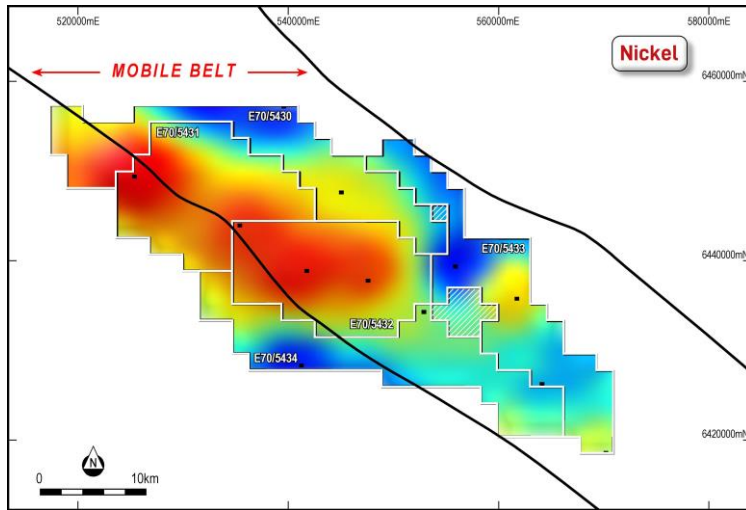
Emerging Ni-Cu-PGM-mineral province



Arkun Project
neighbours and
Operating Mines

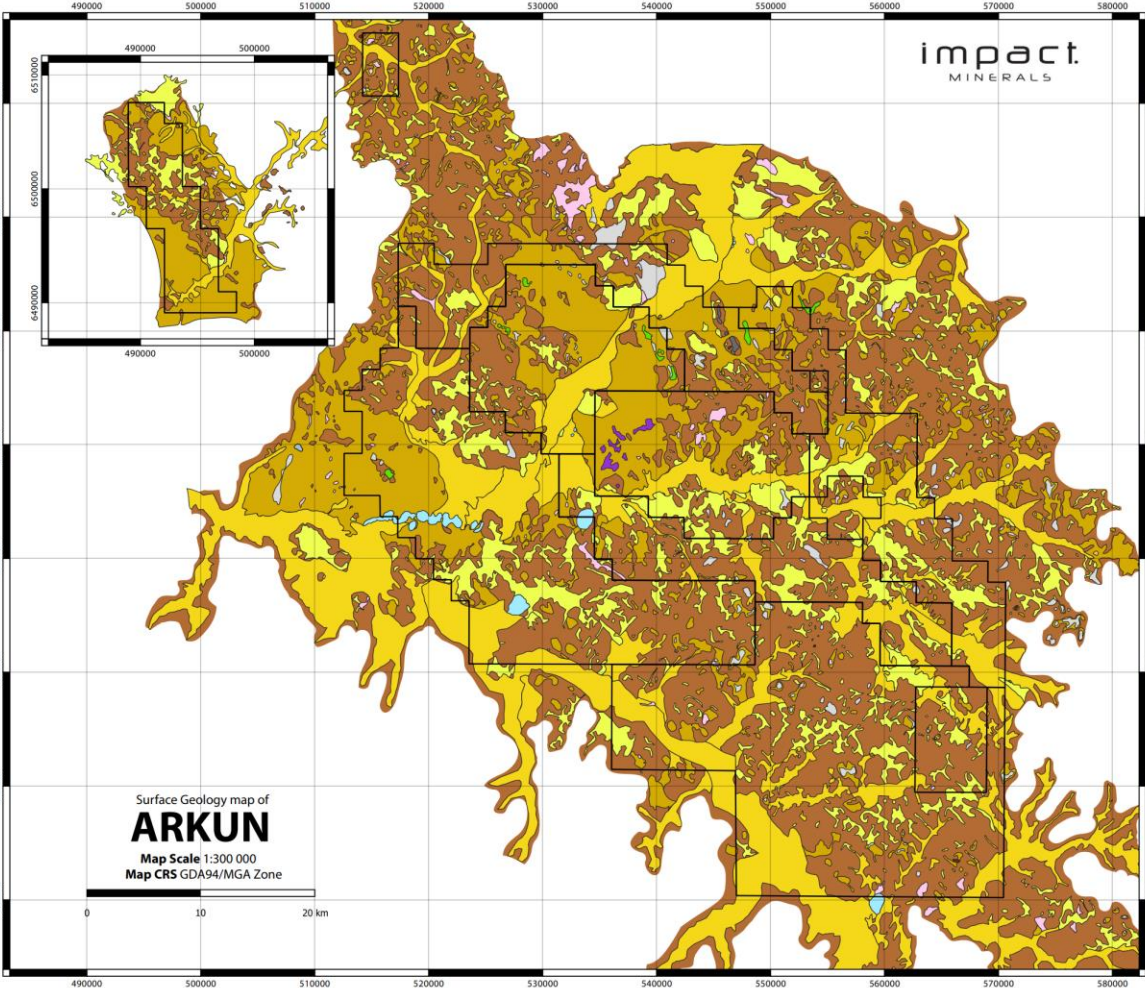
impact.
MINERALS

Arkun Project Regional Geochemistry



- Regional soil geochemistry
- Nickel anomaly from 9km spaced data from CSIRO
- Copper and Gold anomalies from regional work (1980s)
- 10-20 times background

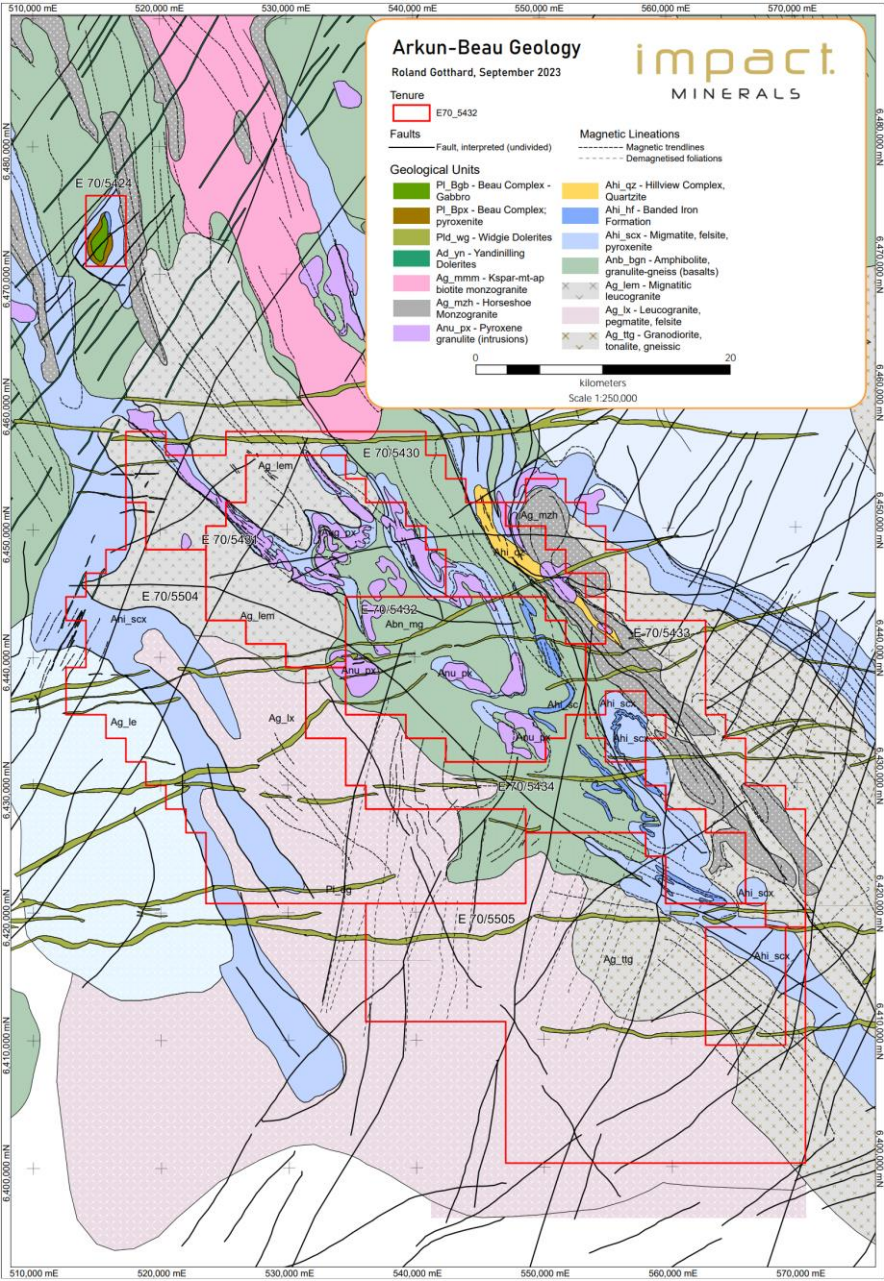
Arkun Project Mapping



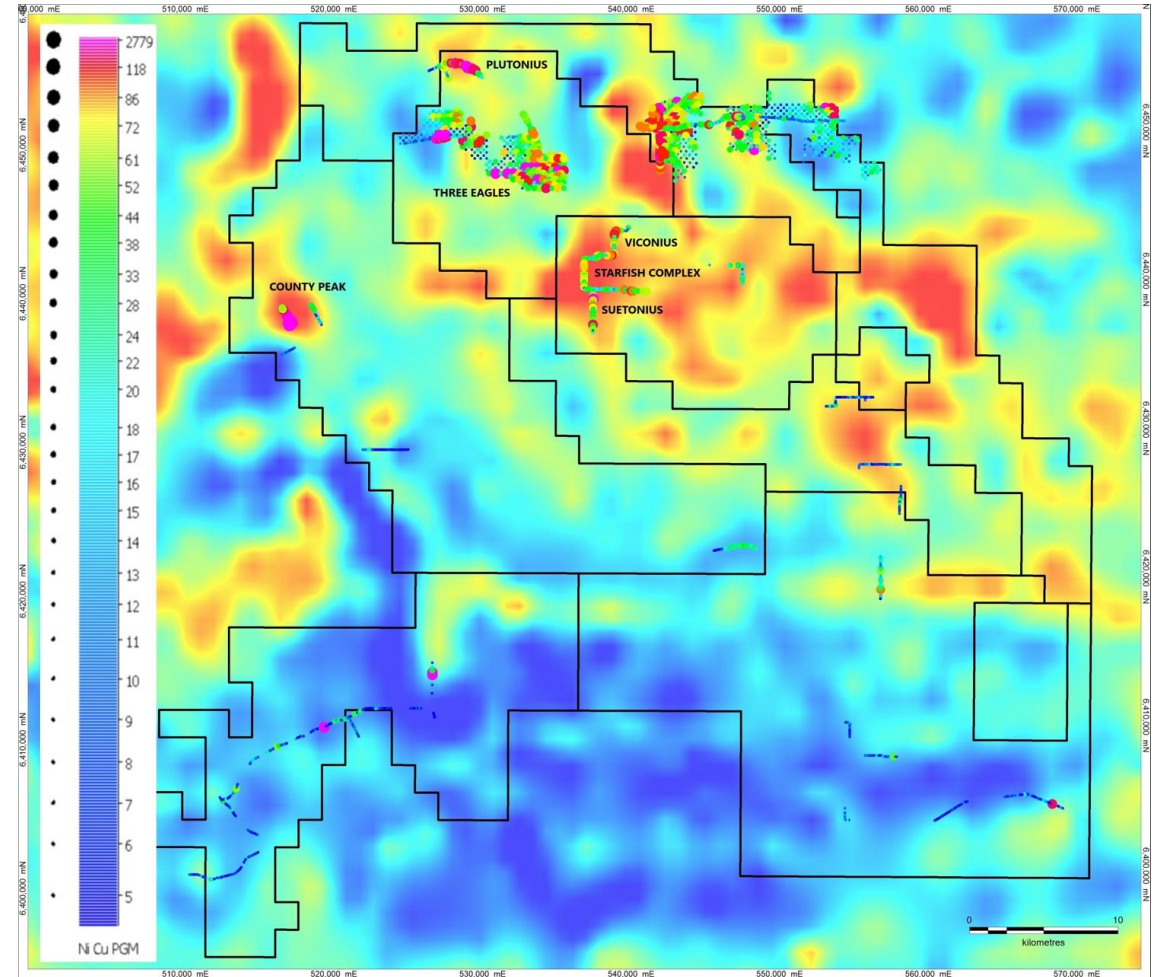
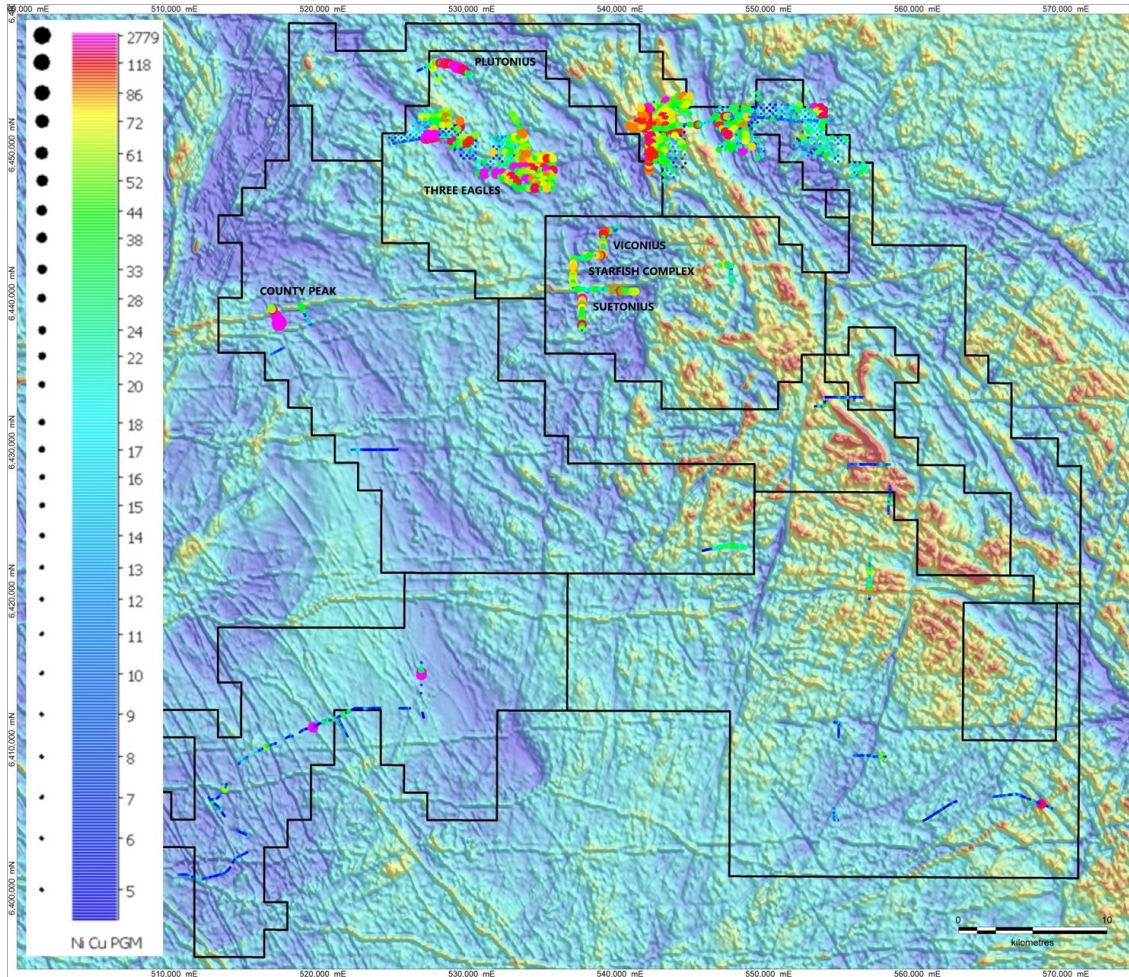
Impact Tenements

Geology

- Salt Pans:**
Playa lakes and/or flat expanses of ground covered with salt and gypsum
- Alluvium:**
Tertiary and Quaternary Alluvium
Silt, sands and gravel within streams, variably reworked by active drainage
- Colluvium:**
Silt, sand and gravel derived from underlying and adjacent laterite and bedrock. Contains minor outcrops of bedrock lithologies.
- Sandplain:**
Yellow to white sands and silt; occurs as sheets and dunes. Locally abundant limonite pebbles. Gypsiferous proximal to playa lakes.
- Ferricrete:**
Limonite, iron-rich, cemented, nodular and massive duricrust overlying deeply weathered bedrock.
- Ultramafic:**
Ultramafic to mafic gneiss, enclosed by granitic gneiss and granofels variably serpentinized.
- Mafic:**
Mafic hornblende-plagioclase-hypersthene granulite.
- Quartzite:**
Non-foliated, massive quartzite.
- Granite:**
Granites of variable composition and textures including:
 - Medium, to coarse-grained adamellite and granodiorite
 - Biotite-rich and foliated porphyritic granite and adamellite
- Gneiss:**
Gneiss of variable composition and textures. All are predominantly recrystallized by high grade metamorphism including:
 - Granofels derived from granodiorite
 - Foliated and banded gneiss with biotite schlieren
- Unclassified:**
Units with a strong UThK radiometric response, that are not associated with a defined lithology of any reference map.

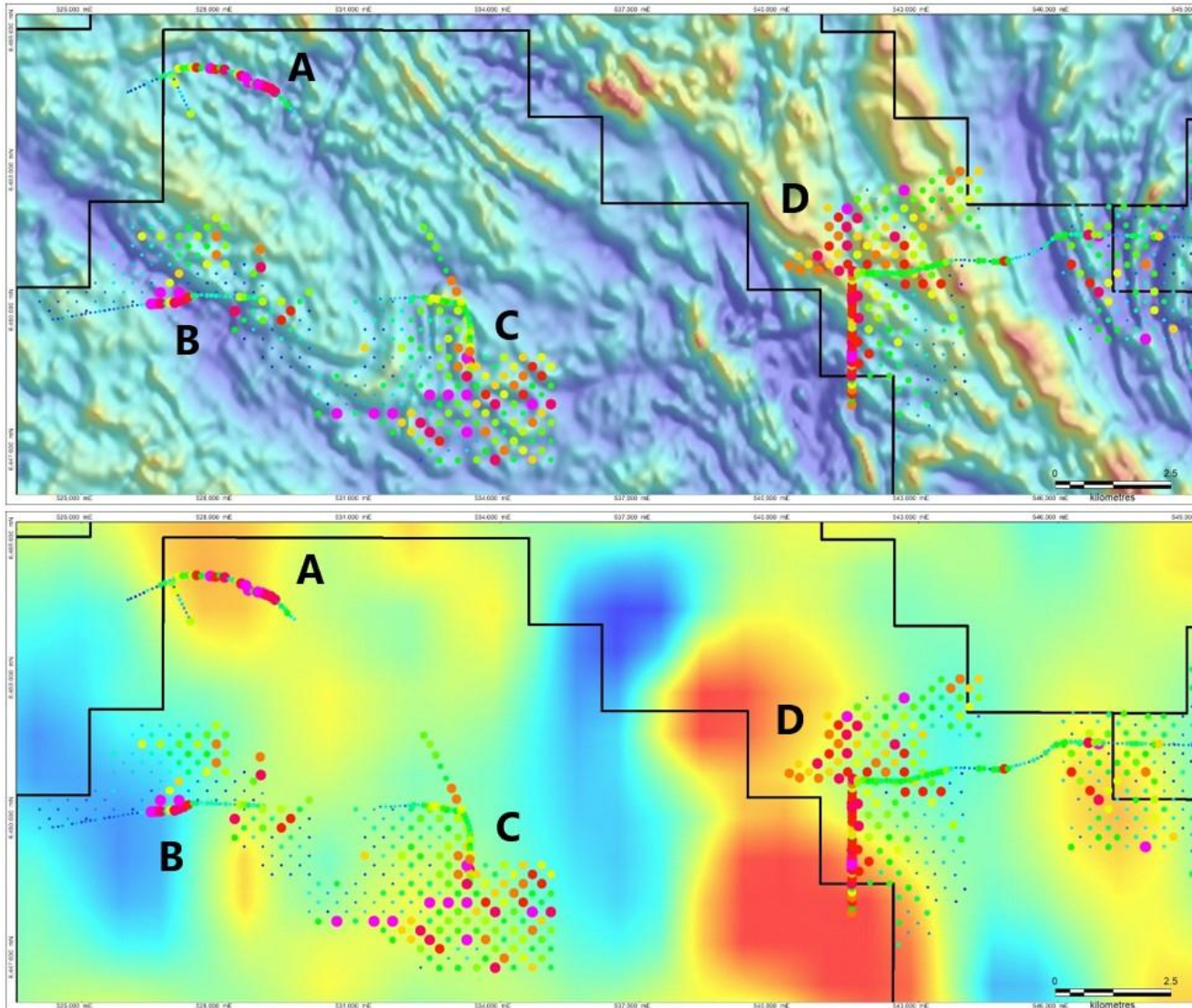


Soil Sampling Programmes



impact.
MINERALS

North Arkun

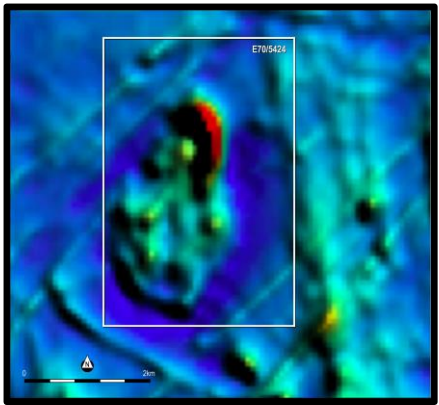
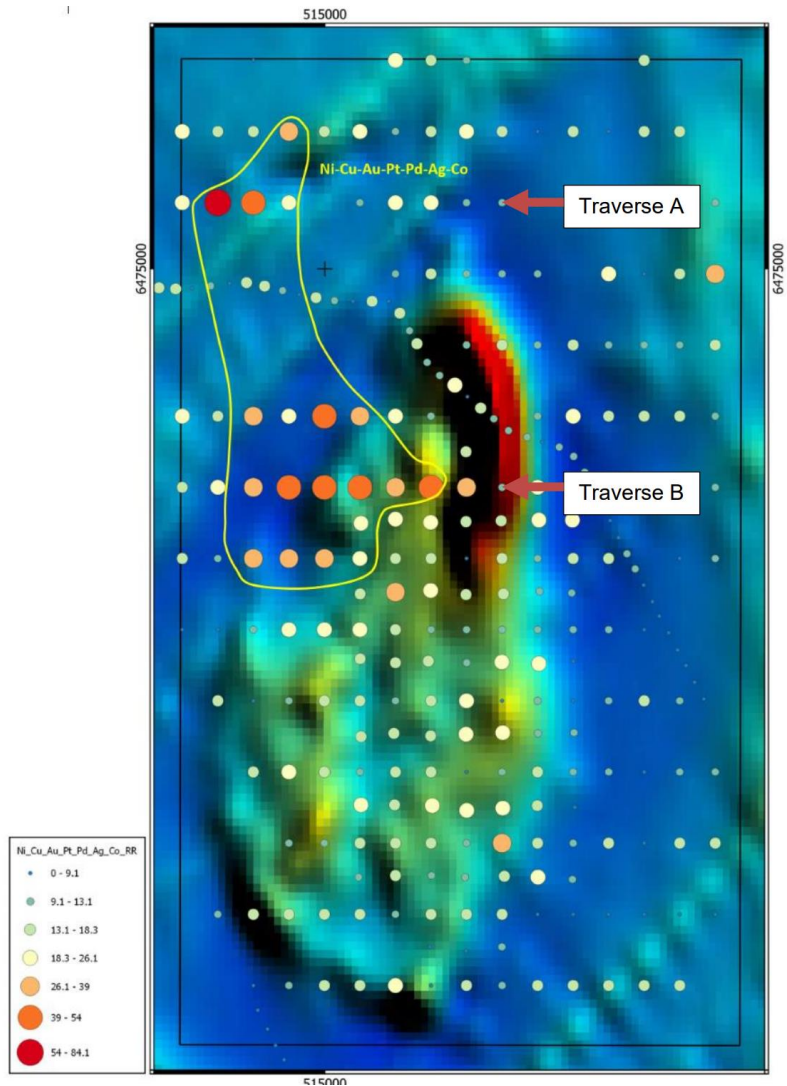


Right Rocks!

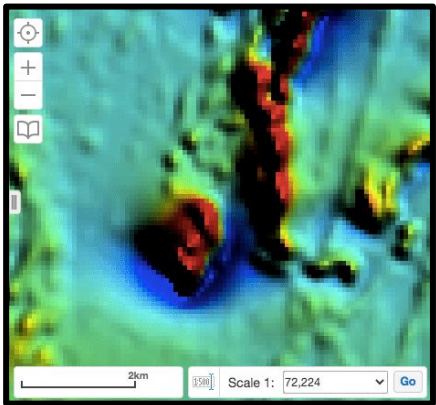
Potential
hosts rock to
Ni-Cu-PGM
deposits

impact.
MINERALS

Beau

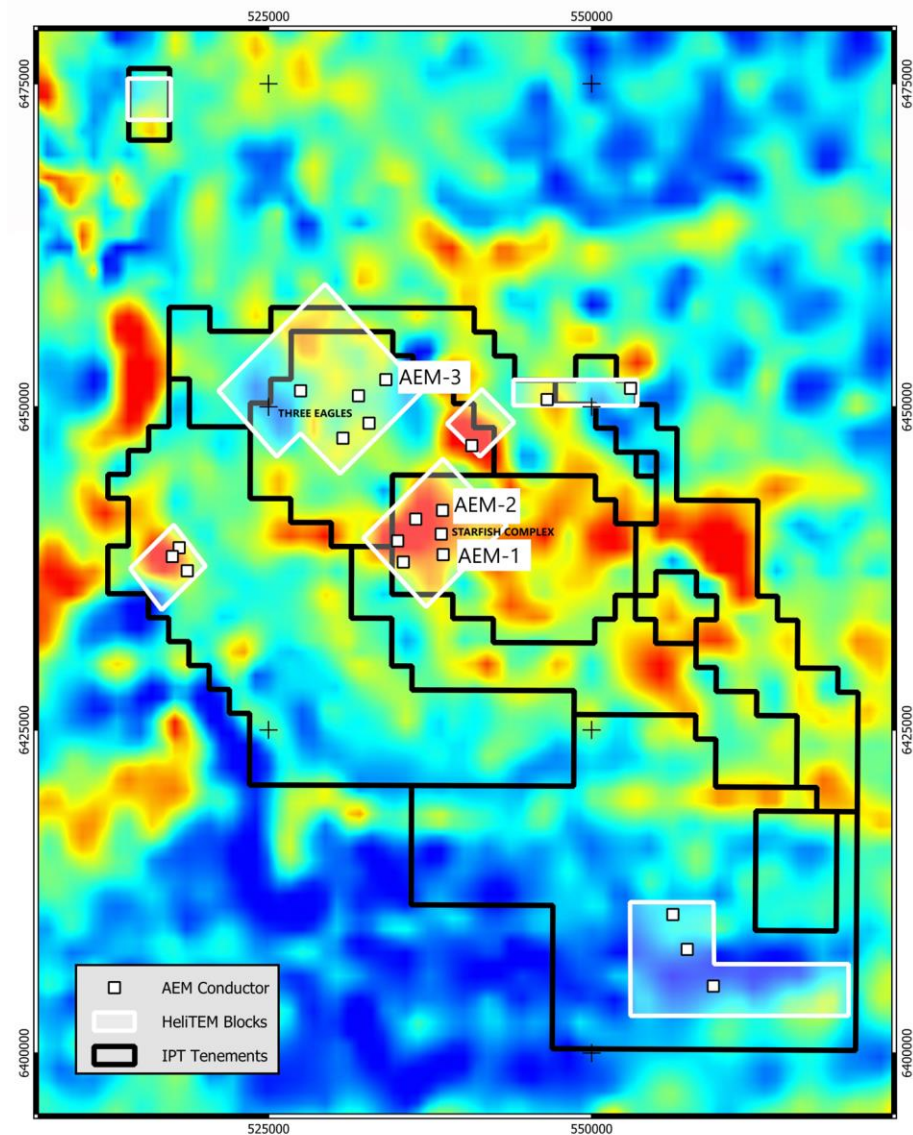
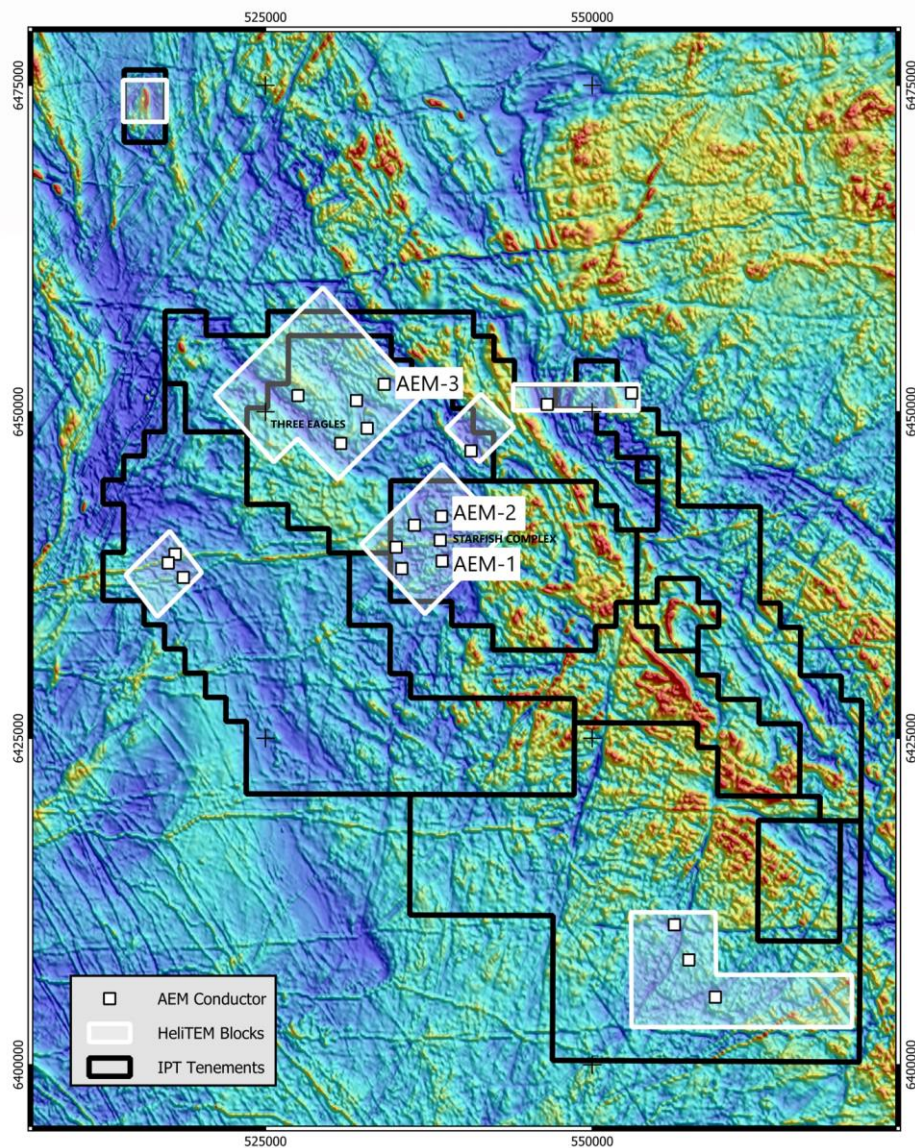


Beau



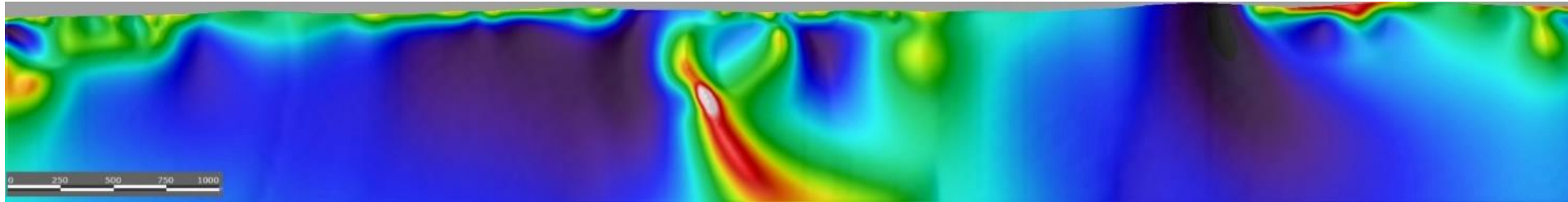
Julimar

Airborne Electromagnetic (EM) Survey



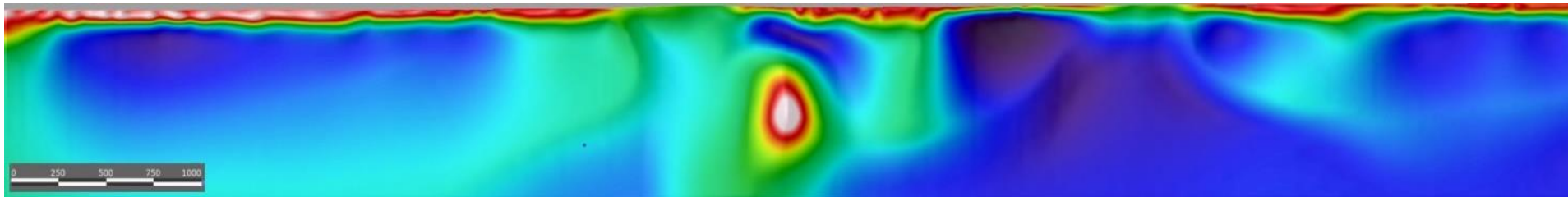
impact.
MINERALS

AEM 2.5D Processing



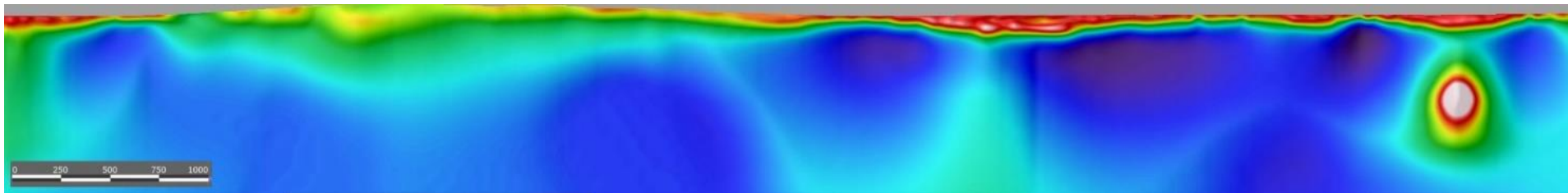
AEM-1 Line 50110

Centered on gravity
high and coincident
Ni-Cu-PGM soil
anomaly



AEM-2 Line 50040

Centered on gravity
high and coincident
Ni-Cu-PGM soil
anomaly

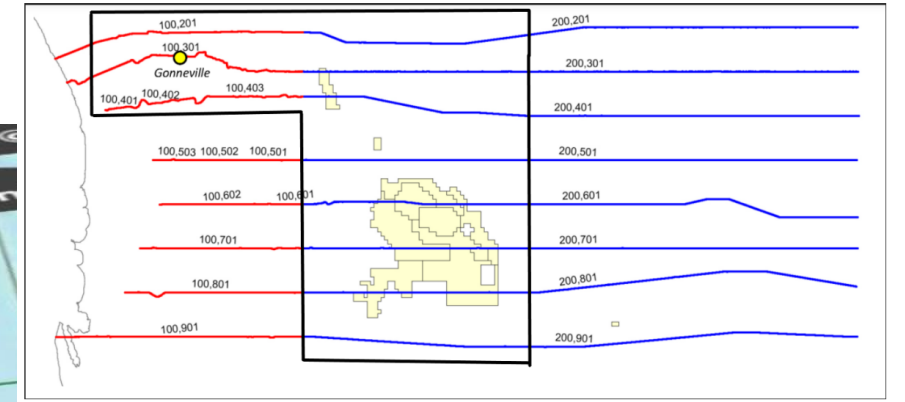
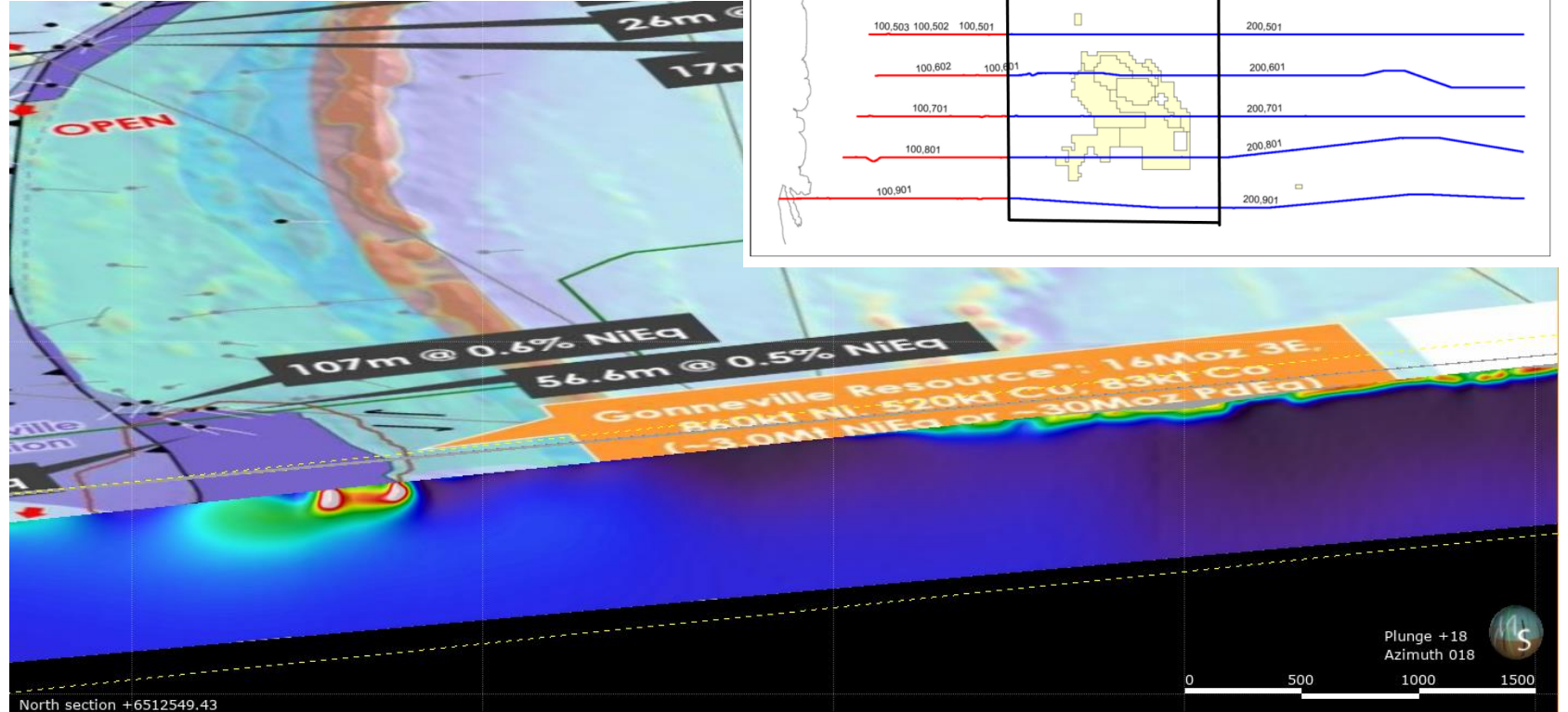
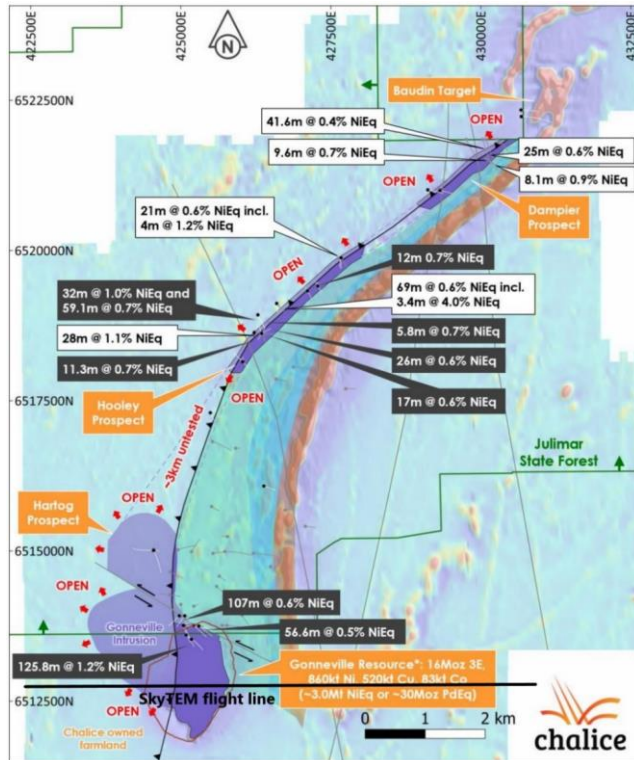


AEM-3 Line 20230

Centered on strong
magnetic
lineament. Not soil
tested

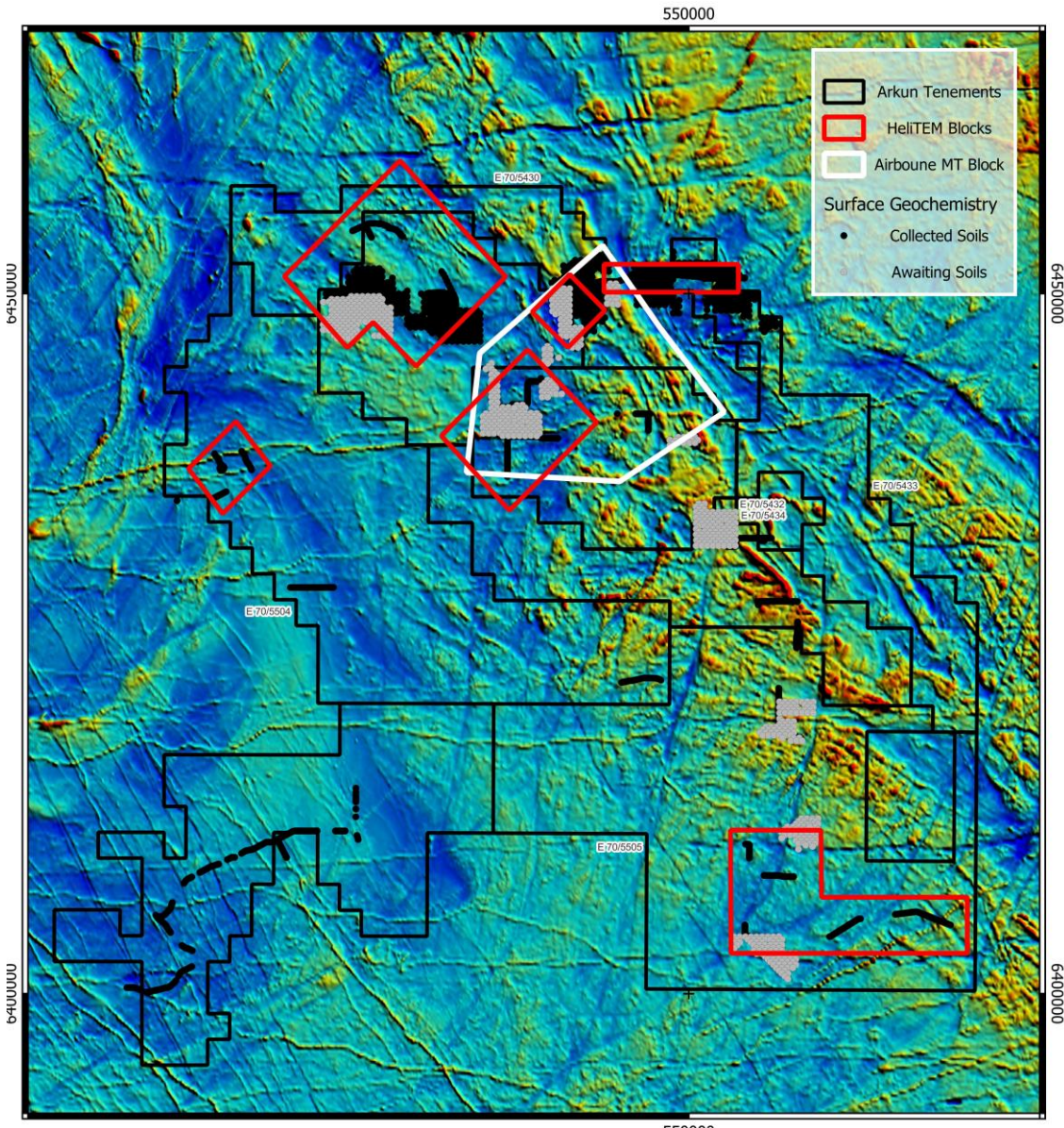
impact.
MINERALS

SkyTEM Survey Line and 2.5 Processing



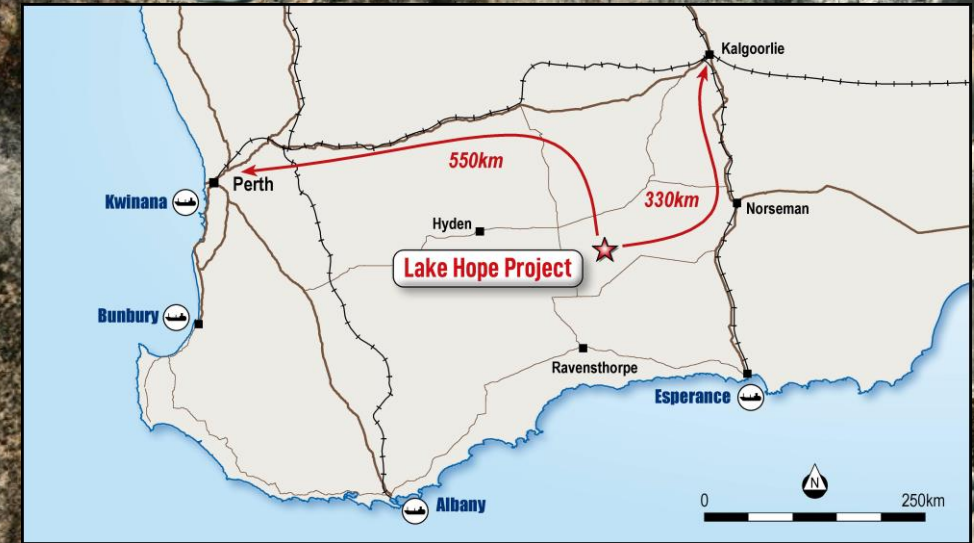
impact.
MINERALS

Follow up work: Strong Newsflow



- Soil samples awaiting
- Follow up mapping and field checking
- Ongoing land access
- MobileMT Survey completed.
- Drill testing Q1 2024

Lake Hope: a unique deposit



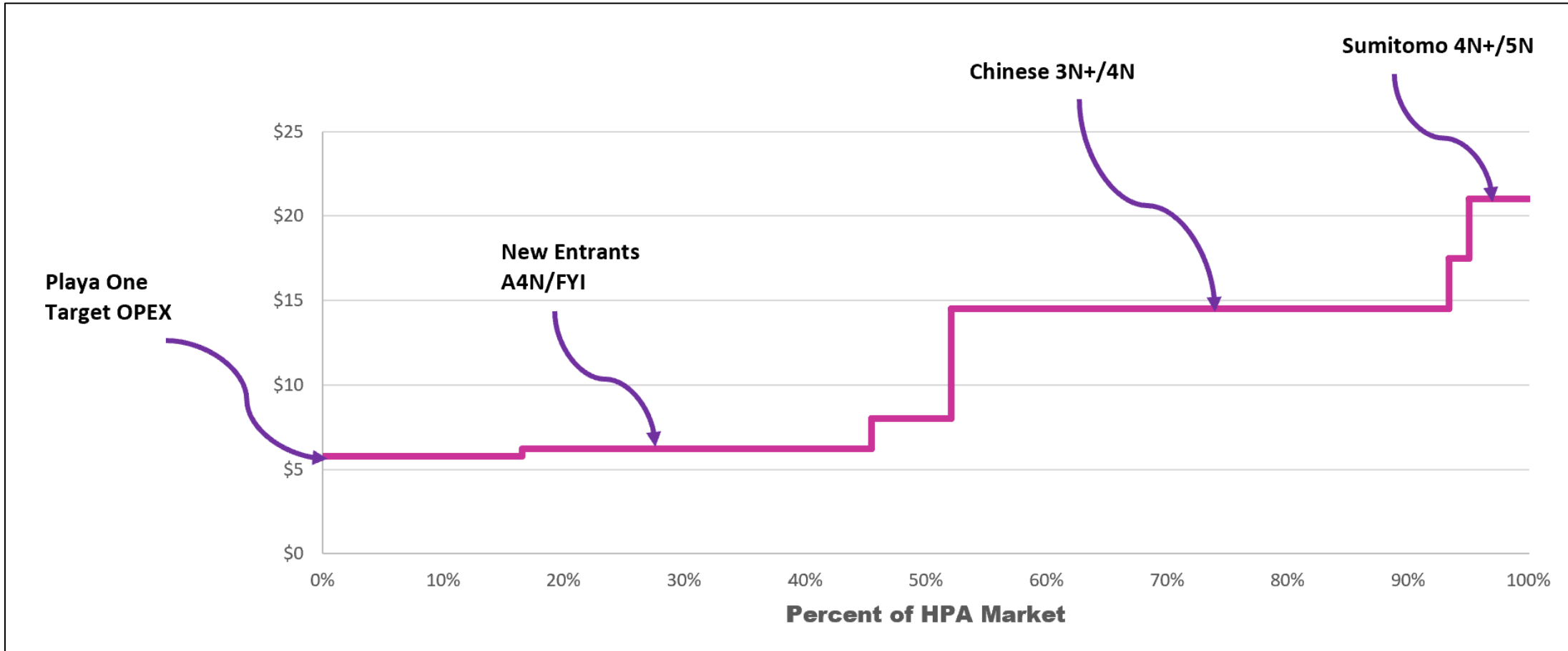
West Lake

East Lake

1 km

Mineral Resources			
Category	MTonnes	Alumina %	Al ₂ O ₃ Kt
Indicated	3.19	25.3	808.0
Inferred	0.31	23.4	71.7
Total	3.50	25.1	879.7

Will we be the lowest cost producer?



COME WITH US ON THE JOURNEY

A black and white photograph of a muddy beach. A path of dark footprints leads from the foreground towards a calm body of water in the distance. The sky is overcast with soft clouds. The horizon line is visible in the middle ground.

- Planning to drill at Arkun in Q1 2024
- We aim to be one of the lowest-cost producers of HPA globally.
- We have a unique deposit in a Tier 1 Jurisdiction.
- We have a cost-disruptive metallurgical process now in PFS.
- We will build out our capabilities in metallurgy and final product specification.
- We will deliver into a high-margin, growth market with significant upside potential.

Competent Persons Statements

The review of exploration activities and results in this presentation (other than for the Lake Hope Project) is based on information compiled by Dr Mike Jones, a Member of the Australian Institute of Geoscientists. He is a director of the company and works for Impact Minerals Limited. He has sufficient experience relevant to the style of mineralisation and types of deposits under consideration and to the activity which he is undertaking to qualify as a Competent Person as defined in the 2012 edition of the Australasian Code for Reporting of Exploration Results, Mineral Resources and Ore Reserves (the JORC Code). Mike Jones has consented to the inclusion in the report of the matters based on his information in the form and context in which it appears.

This review of exploration activities and results, and the metallurgical test work contained in this presentation for the Lake Hope Project is based on information compiled by Roland Gotthard, a Member of the Australian Institute of Mining and Metallurgists. He is an employee of Impact Minerals Limited. He has sufficient experience which is relevant to the style of mineralisation and types of deposits under consideration and to the activity which he is undertaking to qualify as a Competent Person as defined in the 2012 edition of the Australasian Code for Reporting of Exploration Results, Mineral Resources and Ore Reserves (the JORC Code). Mr Gotthard has consented to the inclusion in the report of the matters based on his information in the form and context in which it appears.

The data in this presentation that relates to Mineral Resource estimates for the Lake Hope Project is based on information evaluated by Mr Simon Tear who is a Member of The Australasian Institute of Mining and Metallurgy (MAusIMM) and who has sufficient experience relevant to the style of mineralisation and type of deposit under consideration and to the activity which he is undertaking to qualify as a Competent Person as defined in the 2012 Edition of the Australasian Code for Reporting of Exploration Results, Mineral Resources and Ore Reserves (the "JORC Code"). Mr Tear is a Director of H&S Consultants Pty Ltd and he consents to the inclusion in the presentation of the Mineral Resource in the form and context in which they appear.

The information in this presentation that relates to the Minerals Resource for the Lake Hope Project is based on information announced to the ASX on 19th June 2023. The Company confirms that it is not aware of any new information or data that materially affects the information included in the relevant market announcement, and that all material assumptions and technical parameters underpinning the estimates in the relevant market announcement continue to apply.