

New mineralised area discovered at Falcon Lake with intercepts up to 27.45m

First step-out drilling beyond historical occurrences delivers multiple wide mineralised pegmatite intercepts, demonstrating potential for larger scale at Falcon Lake.

Highlights

- **Another important breakthrough in the 2023 drilling campaign, with multiple thick spodumene-bearing pegmatites intersected in a new zone discovered immediately west of the Falcon Lake East pegmatite outcrop.**
- **The discovery hole, 23FL-059, intersected 27.45 meters grading 0.83% Li₂O from 19.55m down-hole, including 12m @ 1.23% Li₂O.**
- **Additional intercepts also returned from the new zone, including:**
 - **18.05 metres grading 1.02% Li₂O from 11.95m down-hole in hole 23FL-061;**
 - **15.9 metres grading 0.95% Li₂O from 11.1m down-hole in hole 23FL-058; and**
 - **7.15 metres grading 1.06% Li₂O from 23.85m down-hole in hole 23FL-060.**
- **Drilling will continue in this area to further define the mineralisation extents and structural geometry of the pegmatite.**

Battery Age Minerals Ltd (ASX: BM8; “Battery Age” or “the Company”) is pleased to advise that it has intersected a new zone of spodumene mineralisation during its maiden drilling campaign at the Falcon Lake Lithium Project in Ontario, Canada.

Having stepped out from known previous mapped historical occurrences at Falcon Lake, the Company has intersected multiple mineralised pegmatites with intercepts up to 27.45m in hole 23FL-059.

Battery Age Managing Director Gerard O’Donovan commented:

“This is a very promising development, as it is the first time that we have drilled spodumene mineralisation outside of the historical occurrences at Falcon Lake, which is where most of our initial drilling has logically been focused. We knew when we commenced exploration at the property that we had three known mineralised occurrences identified by previous mapping.”

“Now we have proven through our summer fieldwork program and follow up drilling that this mineralisation extends to new unexplored areas within an extensive 5km long prospective trend.”

“This gives us confidence in the potential scale of the asset and the drilling yet to come. We have only drilled a very small portion of the property to date, so the scope for growth is encouraging.”

These intercepts are in a new zone located immediately west of the Falcon Lake East prospect. This new area was identified as part of the summer fieldwork campaign as being highly prospective and sits outside of the previously mapped historical occurrences.

The intercepts also continue to be shallow and from surface in areas, demonstrating the exceptional potential to delineate shallow resources at Falcon Lake.

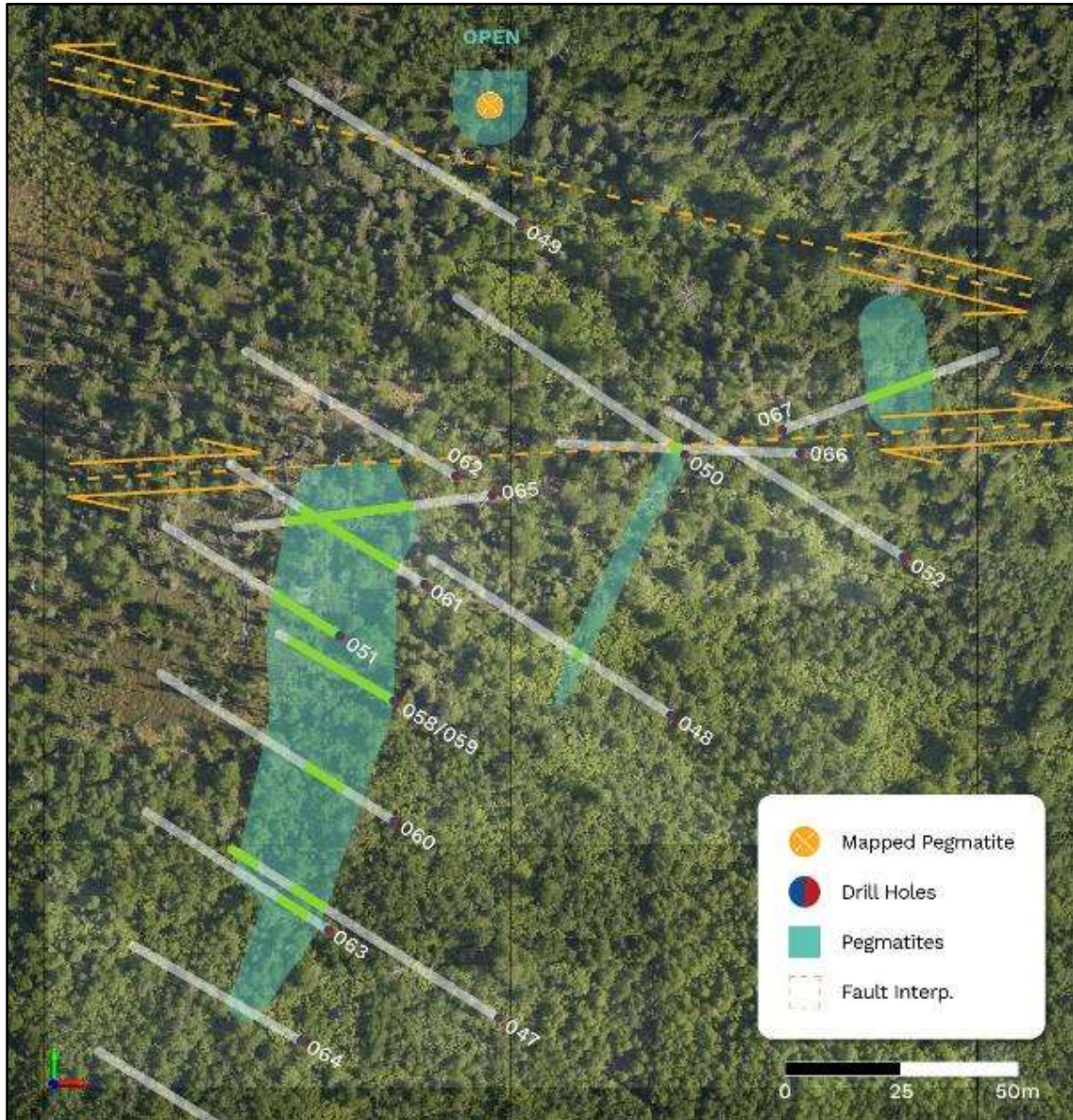


Figure 1 – Plan View of recent discovery adjacent to Falcon Lake East showing (For Location Refer Figure 2).



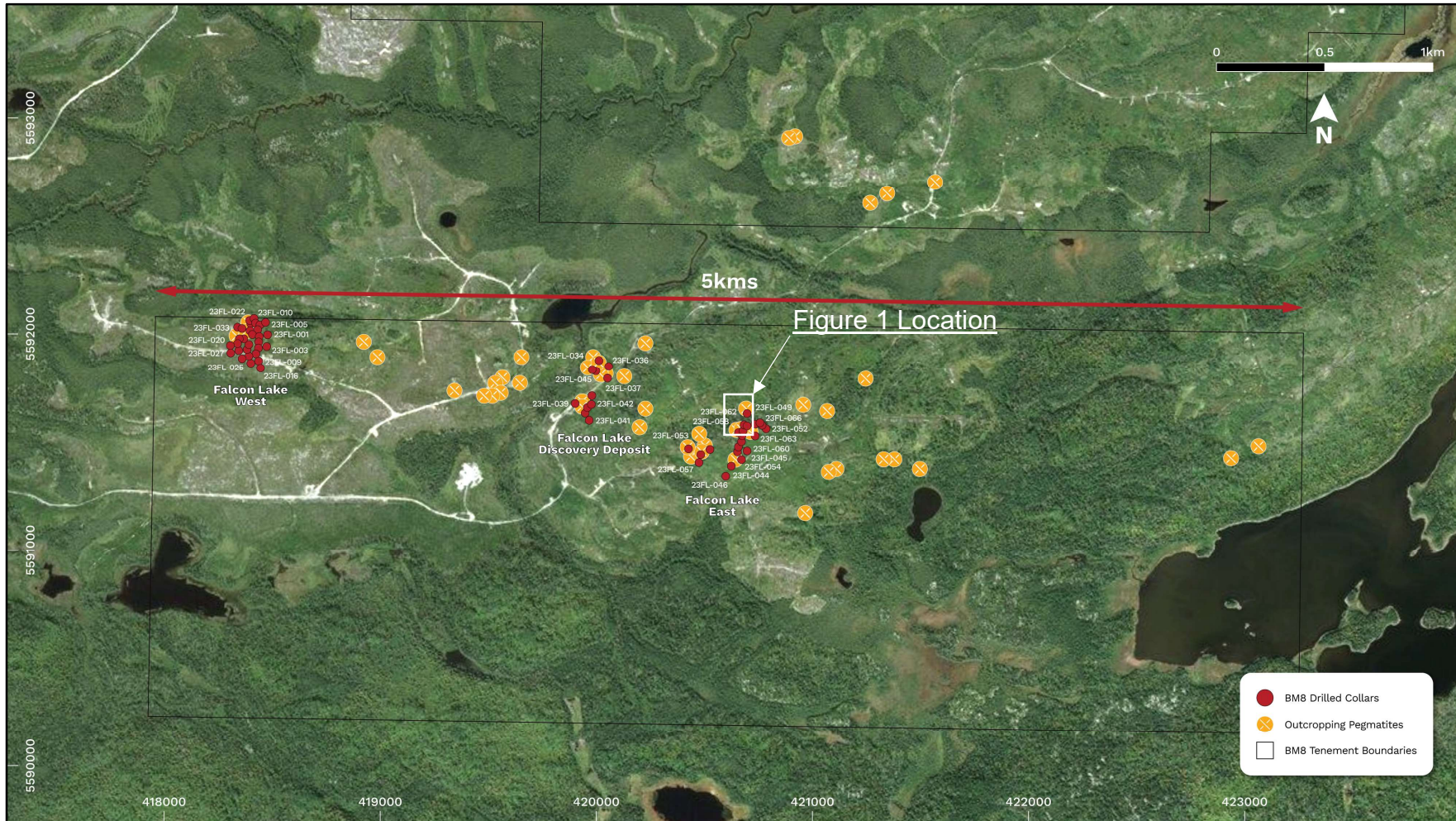


Figure 2 – Plan view of Falcon Lake drilled holes and future targets across 5km.

Given the location of the new zone outside of known historical mineralisation, the discovery also highlights the scale potential of the Falcon Lake Project.

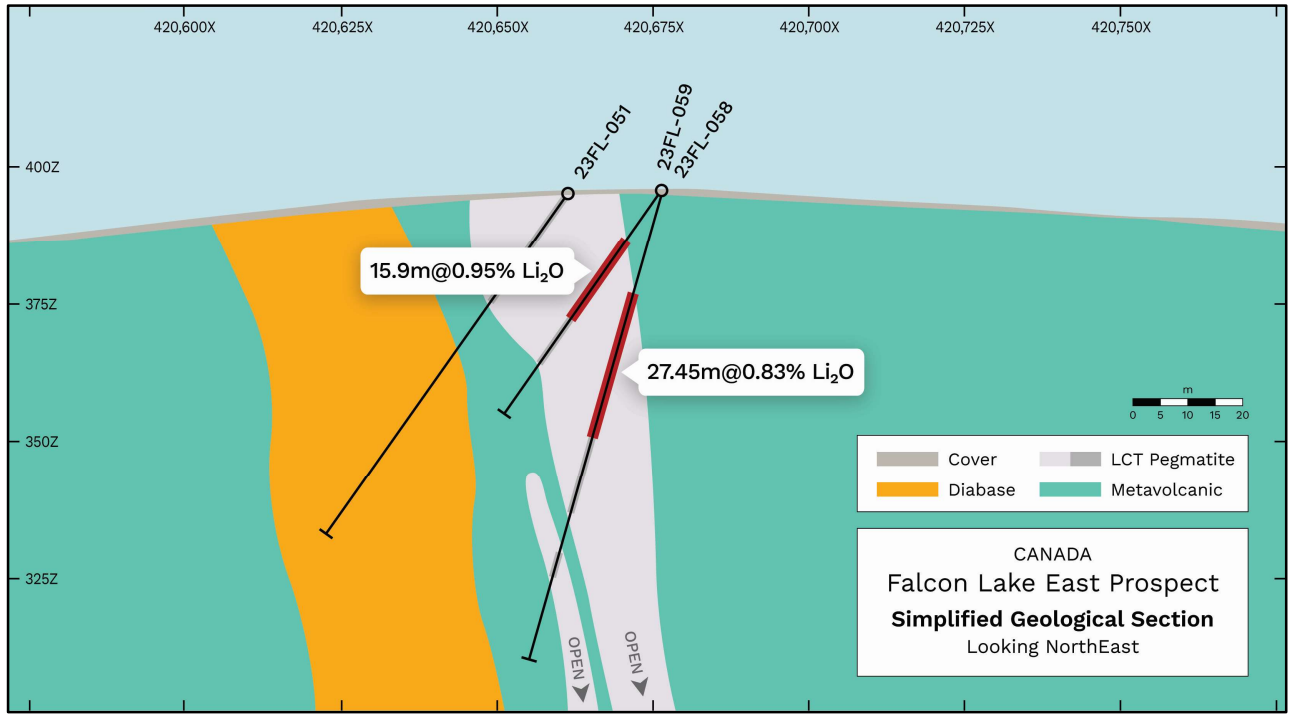


Figure 3 - Cross Section of 23FL-058 & 23FL-059



Figure 4 – Core box containing spodumene mineralisation in hole 23FL-059

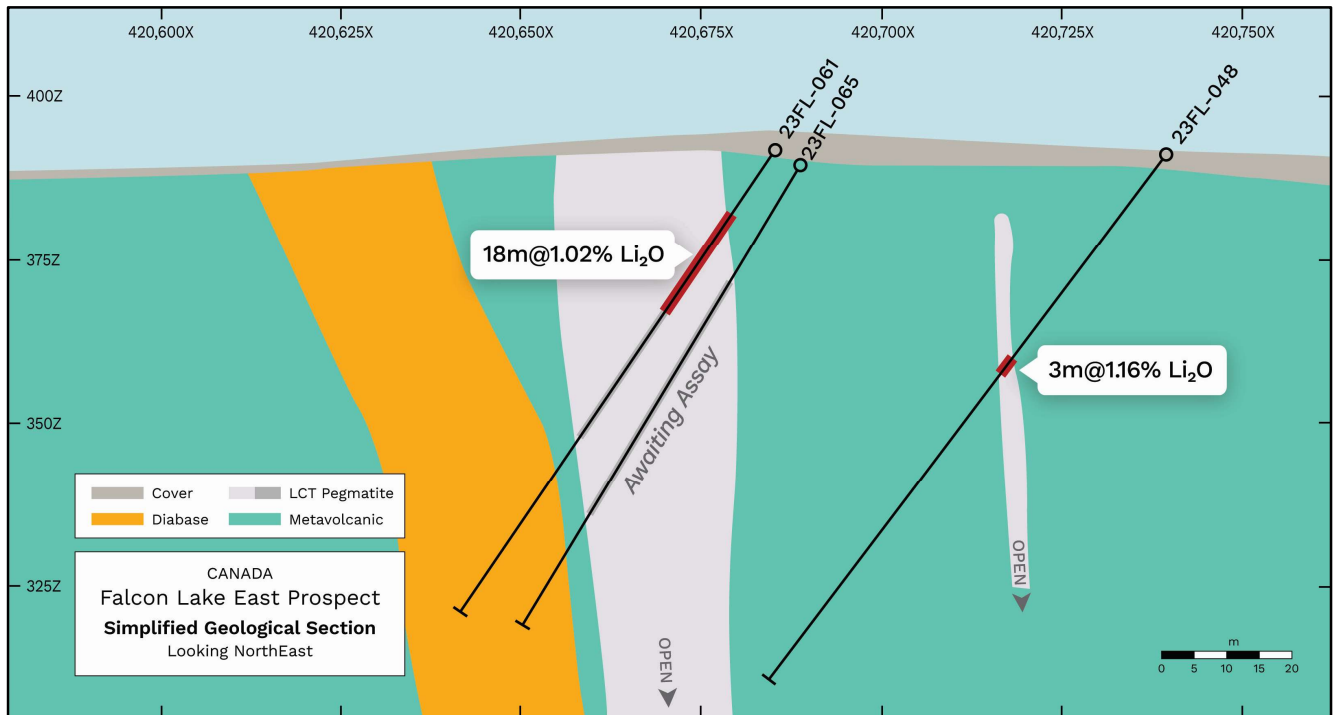


Figure 5 - Cross Section of 23FL-061

This continued success of Battery Age’s maiden drilling program has confirmed the presence of mineralised pegmatites outside of those previously explored and mapped areas, building further on the outstanding drilling results generated to date across the project with only a fraction of the property explored to date.

Significant assay results returned to date are included in the table below:

Hole	From_m	To_m	Interval_m	Li ₂ O (%)
23FL-031	14.65	46.4	31.75	1.45
23FL-005	46.3	76.05	29.75	0.81
23FL-001	16.65	44.25	27.6	1.37
23FL-059	19.65	47	27.45	0.83
23FL-002	62	86	24	0.32
23FL-004	5.7	27.62	21.9	1.44
23FL-061	11.95	30	18.05	1.02
23FL-030	3.7	18.4	14.7	1.5
23FL-058	11.1	27	15.9	0.95
23FL-024	5.4	18.75	13.35	1.5
23FL-020	22.05	33.5	11.45	1.33
23FL-002	7.5	16.2	8.7	1.24
23FL-018	3.6	12.25	8.65	2.04
23FL-033	57.03	64.5	7.47	1.02
23FL-023	56.05	63.21	7.16	1.63
23FL-060	23.85	31	7.15	1.06
23FL-063	10.65	17	6.35	1.06
23FL-018	13.75	19.8	6.05	1.23
23FL-017	23.2	29.09	5.89	1.23
23FL-047	77.7	83.2	5.5	0.73

Table 1 - Significant Intercepts at Falcon Lake with new intercepts highlighted.

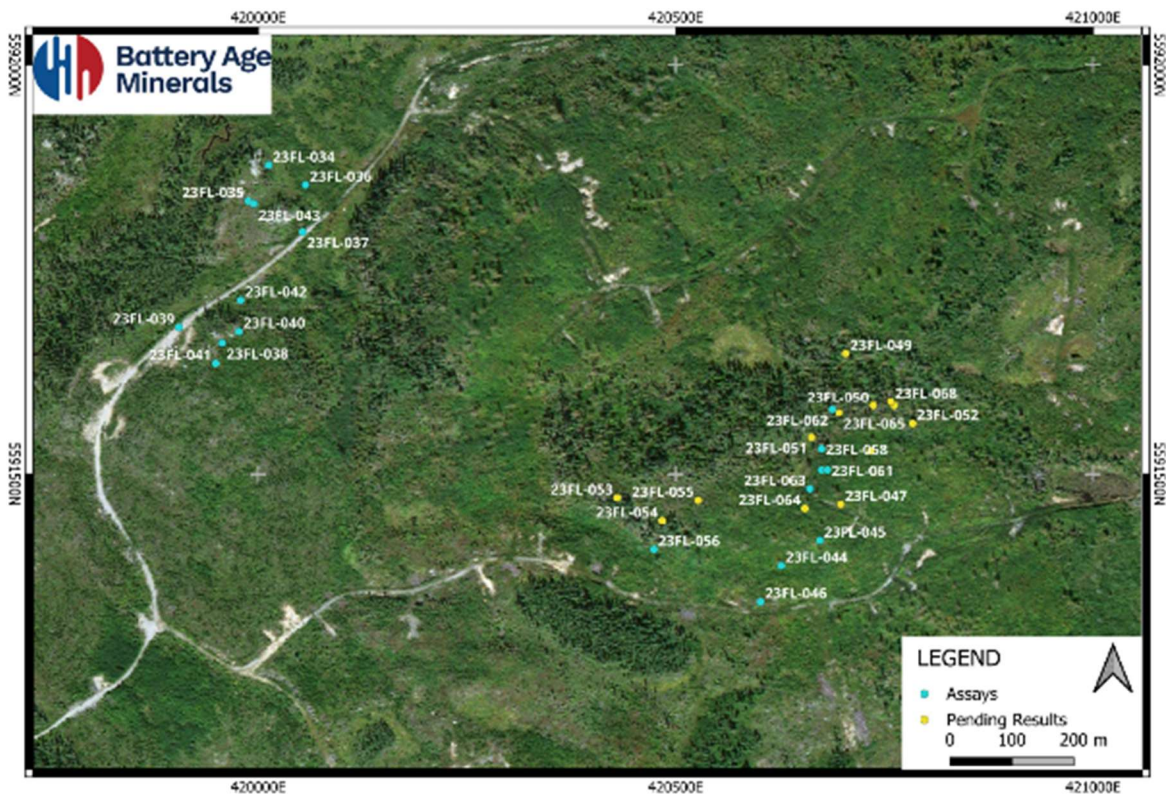


Figure 2 – Drill Collar Map – Falcon Discovery & Falcon Lake East

This is the first step-out zone targeted by the exploration team following the completion of field mapping and, with a further 30 mapped pegmatites identified as part of the summer program, the team will continue to systematically explore these high-priority targets moving forward into the winter drilling campaign.

[ENDS]

Release authorised by the Board of Battery Age Minerals Ltd.

Contacts

Investors / Shareholders

Gerard O'Donovan
Managing Director
P: +61 (0)8 6109 6689
E: info@batteryage.au

Media

Nicholas Read – Read Corporate
P: +61 (0)8 9388-1474 / (0419) 929 046
E: nicholas@readcorporate.com.au

Competent Person Statement

The information in this Report that relates to Geological Data and Exploration Results for the Falcon Lake Lithium Project is based on, and fairly represents, information and supporting documentation compiled and reviewed by Mr Nigel Broomham (BSc (Hons) Geology & Resource Economics) who is a Member of the Australasian Institute of Mining and Metallurgy (AusIMM) and holds a Professional Certificate in JORC Code Reporting. Mr Broomham is the General Manager – Exploration of Battery Age Minerals. Mr Broomham has sufficient experience which is relevant to the style of mineralisation and type of deposit under consideration and to the activity which he is undertaking to qualify as a Competent Person as defined in the 2012 Edition of the Joint Ore Reserves Committee (JORC) "Australasian Code for Reporting of Exploration Results, Mineral Resources and Ore Reserves". Mr Broomham consents to the inclusion in this report of the matters based on information in the form and context in which they appear. Mr Broomham holds securities in the Company. This announcement contains information regarding the Falcon Lake Lithium Project extracted from ASX market announcement dated 4 July 2023 and 7 December 2022 and reported in accordance with the 2012 JORC Code and available for viewing at batteryageminerals.au. The Company confirms that it is not aware of any new information or data that materially affects the information included in any original announcement and that all material assumptions and technical parameters underpinning the estimates in the original market announcement continue to apply and have not materially changed.

Compliance Statement

This report contains information on the Falcon Lake Project extracted from an ASX market announcement dated 26 July 2023, 2 August 2023, 16 August 2023, 6 September 2023 and 14 September 2023 released by the Company and reported in accordance with the 2012 edition of the "Australasian Code for Reporting of Exploration Results, Mineral Resources and Ore Reserves" (JORC Code). The original market announcement is available to view on www.batteryage.au and www.asx.com.au. Battery Age is not aware of any new information or data that materially affects the information included in the original market announcement.

Forward-Looking Statement

This announcement may contain certain forward-looking statements and projections. Such forward looking statements/projections are estimates for discussion purposes only and should not be relied upon. Forward looking statements/projections are inherently uncertain and may therefore differ materially from results ultimately achieved. Battery Age Minerals Limited does not make any representations and provides no warranties concerning the accuracy of the projections and disclaims any obligation to update or revise any forward-looking statements/projects based on new information, future events or otherwise except to the extent required by applicable laws. While the information contained in this report has been prepared in good faith, neither Battery Age Minerals Limited or any of its directors, officers, agents, employees or advisors give any representation or warranty, express or implied, as to the fairness, accuracy, completeness or correctness of the information, opinions and conclusions contained in this announcement.

Appendix 1 – Drill Collar Positions & Mineralised Intercepts

Hole	Length_m	UTM_East	UTM_North	UTM_Elevation	Azimuth	Dip
23FL-001	56	418403.3	5591981	359	300	60
23FL-002	125	418363.7	5592004.3	360	300	-60
23FL-003	122	418434.4	5591962.6	359	300	-60
23FL-004	44	418391.8	5592037.4	363	300	-60
23FL-005	101	418430.2	5592021.9	361	300	-60
23FL-006	145	418473.8	5591997.4	360	300	-60
23FL-007	50	418337.6	5591959.3	358	300	-60
23FL-008	101	418381.2	5591934.7	359	300	-60
23FL-009	140	418424.7	5591910.2	361	300	-60
23FL-010	41	418416.1	5592069.5	362	300	-60
23FL-011	122	418476.5	5592053.2	362	300	-60
23FL-012	53	418313.1	5591915.7	359	300	-60
23FL-013	101	418356.6	5591891.2	361	300	-60
23FL-014	140	418400.2	5591866.6	362	300	-60
23FL-015	305	418440	5591987.7	356	300	-80
23FL-016	140	418443.8	5591842.1	361	300	-60
23FL-017	41	418350	5591981.1	357	300	-60
23FL-018	86	418393.5	5591956.5	354	300	-60
23FL-020	92	418396.4	5592012.3	355	300	-60
23FL-021	101	418440	5591987.7	356	300	-60
23FL-022	41	418399	5592068.2	361	300	-60
23FL-023	110	418442.5	5592043.7	364	300	-60
23FL-024	77	418347.1	5591925.3	358	300	-60
23FL-025	95	418390.6	5591900.7	358	300	-60
23FL-026	89	418434.4	5591876	362	300	-60
23FL-029	74	418420.4	5592056.1	361	300	-60
23FL-030	50	418397	5592051.9	361	300	-60
23FL-031	53	418360	5592029	362	210	-60
23FL-032	68	418360	5592029	362	300	-60
23FL-033	86	418342	5592034	361	210	-60
23FL-034	83.2	420012.6	5591877	339.03	300	-60
23FL-035	50	419988.1	5591834	341.19	300	-60
23FL-036	152	420056.8	5591853	341.41	300	-60
23FL-037	197	420053.5	5591797	342.45	300	-60
23FL-038	185	419957	5591661	356	300	-55
23FL-039	176	419905	5591680	300	300	-60
23FL-040	176	419977	5591675	412	300	-55
23FL-041	194	419949	5591636	412	300	-55
23FL-042	185	419979	5591713	343	300	-55
23FL-043	185	419995	5591830	340	300	-60
23FL-044	155	42062.69	5591388	388	300	-55

Hole	Length_m	UTM_East	UTM_North	UTM_Elevation	Azimuth	Dip
23FL-045	122	420673	5591419	388	300	-55
23FL-046	101	420602	5591344	376	300	-55
23FL-047	116	420698	5591463	392	300	-55
23FL-048	101	420734	5591528	391	300	-55
23FL-049	101	420704	5591648	390	300	-55
23FL-050	98	420737	5591584	389	300	-55
23FL-051	77	420663	5591545	384	300	-55
23FL-052	101	420784	5591562	381	300	-55
23FL-053	101	420430	5591471	383	310	-50
23FL-054	110	420484	5591443	335	310	-50
23FL-055	149	420527	5591468	393	290	-60
23FL-056	152	420474	5591408	379	300	-50
23FL-057	287	420474	5591408	379	310	-80
23FL-058	50	420675	5591531	390	300	-55
23FL-059	89	420675	5591531	390	300	-75
23FL-060	98	420675	5591505	391	300	-55
23FL-061	86	420682	5591505	390	300	-55
23FL-062	92	420688	5591579	388	300	-55
23FL-063	80	420661	5591482	390	300	-55
23FL-064	74	420655	5591458	390	300	-55
23FL-065	95	420696	5591575	389	260	-55
23FL-066	89	420762	5591584	380	270	-55
23FL-067	62	420758	5591589	380	70	-45

Table 2 – Falcon Lake Completed Holes to date - Drill Collar Details. UTM Grid: NAD83_Z16N



Hole	From_m	To_m	Interval	Li ₂ O_%
23FL-001	16.65	44.25	27.6	1.36
23FL-002	7.5	16.2	8.7	1.30
23FL-002	62	86	24	0.32
23FL-003	40.18	43.62	3.44	1.09
23FL-004	5.7	27.62	21.92	1.45
23FL-005	46.3	76.05	29.75	0.81
23FL-007	9.05	15.64	6.59	0.33
23FL-007	29	32.52	3.52	1.48
23FL-008	29.8	32.5	2.7	1.00
23FL-008	33.7	34.55	0.85	0.42
23FL-008	39.43	47.28	7.85	0.24
23FL-010	28.75	29.3	0.55	1.34
23FL-014	13.38	14.95	1.57	0.54
23FL-017	14.3	19	4.7	1.00
23FL-017	23.2	29.09	5.89	1.23
23FL-018	3.6	12.25	8.65	2.04
23FL-018	13.75	19.8	6.05	1.23
23FL-018	69.5	80.5	10.55	0.12
23FL-020	22.05	33.5	11.45	1.33
23FL-020	29	33	4	1.93
23FL-021	46.52	48.37	1.85	1.16
23FL-023	56.05	63.21	7.16	1.63
23FL-024	5.4	18.75	13.35	1.50
23FL-024	26.8	30.5	3.7	0.91
23FL-024	37.8	39.6	1.8	0.32
23FL-030	3.7	18.4	14.7	1.50
23FL-031	14.65	46.4	31.75	1.45
23FL-033	53.9	56.54	2.64	1.18
23FL-033	57.03	64.5	7.47	1.02
23FL-034	30.05	32.19	2.14	0.83
23FL-034	32.44	32.89	0.45	1.32
23FL-037	97.45	98.5	1.05	0.14
23FL-037	160.55	161.7	1.15	0.13
23FL-038	112.5	117.95	5.45	0.23
23FL-040	134	139.95	5.95	0.69
23FL-040	141.2	143.75	2.55	0.29
23FL-041	105.25	107.4	2.15	0.72
23FL-041	112.85	116.15	3.3	0.21
23FL-041	118	120.25	2.25	1.95
23FL-041	121.75	122.95	1.2	1.02



Hole	From_m	To_m	Interval	Li ₂ O_%
23FL-041	133.8	143.6	9.8	0.14
23FL-044	2.75	4.6	1.85	1.21
23FL-045	17.25	19.45	2.2	0.83
23FL-045	24.7	27.15	2.45	0.61
23FL-047	77.7	83.2	5.5	0.73
23FL-048	38.99	41.92	2.93	1.16
23FL-050	2.5	5.41	2.91	1.03
23FL-053	Results Pending			
23FL-054	Results Pending			
23FL-055	Results Pending			
23FL-056	98.45	100.15	1.7	1.24
23FL-058	11.1	27	15.9	0.95
23FL-059	19.55	47	27.45	0.83
23FL-060	23.85	31	7.15	1.06
23FL-061	11.95	30	18.05	1.02
23FL-063	10.65	17	6.35	1.06
23FL-064	Results Pending			
23FL-065	Results Pending			
23FL-067	Results Pending			

Table 3 – Mineralised Intervals (>0.1% Li₂O) and greater than 0.45m. Intervals are down hole length, true width not known.



Appendix 2 – JORC CODE, 2012 EDITION – TABLE 1

Section 1 Sampling Techniques and Data

(Criteria in this section apply to all succeeding sections.)

Criteria	JORC Code explanation	Commentary
Sampling techniques	<ul style="list-style-type: none"> Nature and quality of sampling (eg cut channels, random chips, or specific specialised industry standard measurement tools appropriate to the minerals under investigation, such as down hole gamma sondes, or handheld XRF instruments, etc). These examples should not be taken as limiting the broad meaning of sampling. Include reference to measures taken to ensure sample representivity and the appropriate calibration of any measurement tools or systems used. Aspects of the determination of mineralisation that are Material to the Public Report. In cases where ‘industry standard’ work has been done this would be relatively simple (eg ‘reverse circulation drilling was used to obtain 1 m samples from which 3 kg was pulverised to produce a 30 g charge for fire assay’). In other cases more explanation may be required, such as where there is coarse gold that has inherent sampling problems. Unusual commodities or mineralisation types (eg submarine nodules) may warrant disclosure of detailed information. 	<ul style="list-style-type: none"> All diamond drill core is NQ (76mm) in this drilling program. Diamond core sample intervals are logged for lithology, structural and geotechnical information, measured, photographed, and placed into numbered trays prior to sampling. Core has been sampled on nominal ~1m intervals (0.80 – 1.20m) where possible unless geological boundaries dictate otherwise. Geological boundaries have not been crossed by sample intervals. ½ core samples have been split by core saw, collected, and submitted for analysis to AGAT Laboratories along with regular duplicates, standards and blanks in line with QAQC procedures. The same side of the core is always sampled in-line with procedure.
Drilling techniques	<ul style="list-style-type: none"> Drill type (eg core, reverse circulation, open-hole hammer, rotary air blast, auger, Bangka, sonic, etc) and details (eg core diameter, triple or standard tube, depth of diamond tails, face-sampling bit or other type, whether core is oriented and if so, by what method, etc). 	<ul style="list-style-type: none"> All holes are NQ diamond drill holes. A Gyro based system has been used for both rig alignment and downhole measurements on all holes.
Drill sample recovery	<ul style="list-style-type: none"> Method of recording and assessing core and chip sample recoveries and results assessed. Measures taken to maximise sample recovery and ensure representative nature of the samples. Whether a relationship exists between sample recovery and grade and whether sample bias may have occurred due to preferential loss/gain of fine/coarse material. 	<ul style="list-style-type: none"> All core is depth marked and oriented to check against drillers measurements (blocks), ensuring that all core loss is considered. Diamond core recovery is recorded into the database. No significant core loss has been observed to date.
Logging	<ul style="list-style-type: none"> Whether core and chip samples have been geologically and geotechnically logged to a level of detail to support appropriate Mineral Resource estimation, mining studies and 	<ul style="list-style-type: none"> All drill cores have been geologically logged. Geological logging is completed for all holes, and it

Criteria	JORC Code explanation	Commentary
	<p><i>metallurgical studies.</i></p> <ul style="list-style-type: none"> • <i>Whether logging is qualitative or quantitative in nature. Core (or costean, channel, etc) photography.</i> • <i>The total length and percentage of the relevant intersections logged.</i> 	<p><i>is representative.</i></p> <ul style="list-style-type: none"> • <i>The lithology, alteration, geotechnical and structural characteristics of drill samples are logged following standard procedures and using standardised geological codes.</i> • <i>Logging is both qualitative and quantitative depending on field being logged.</i> • <i>All drill-holes are logged in full.</i> • <i>All drill core are digitally photographed and stored.</i>
Sub-sampling techniques and sample preparation	<ul style="list-style-type: none"> • <i>If core, whether cut or sawn and whether quarter, half or all core taken.</i> • <i>If non-core, whether riffled, tube sampled, rotary split, etc and whether sampled wet or dry.</i> • <i>For all sample types, the nature, quality and appropriateness of the sample preparation technique.</i> • <i>Quality control procedures adopted for all sub-sampling stages to maximise representivity of samples.</i> • <i>Measures taken to ensure that the sampling is representative of the in situ material collected, including for instance results for field duplicate/second-half sampling.</i> • <i>Whether sample sizes are appropriate to the grain size of the material being sampled.</i> 	<ul style="list-style-type: none"> • <i>All core has been cut and sampled at the core processing facility in Armstrong, Ontario.</i> • <i>NQ core was split by saw in half, always using the same half for sampling purposes.</i> • <i>Duplicate sampling is carried out routinely throughout the drilling campaign in line with QAQC procedure. The laboratory will carry out routine internal repeat assays on crushed samples.</i> • <i>Considering the grain size, half core NQ samples are believed to be a representative of the sample.</i>
Quality of assay data and laboratory tests	<ul style="list-style-type: none"> • <i>The nature, quality and appropriateness of the assaying and laboratory procedures used and whether the technique is considered partial or total.</i> • <i>For geophysical tools, spectrometers, handheld XRF instruments, etc, the parameters used in determining the analysis including instrument make and model, reading times, calibrations factors applied and their derivation, etc.</i> • <i>Nature of quality control procedures adopted (eg standards, blanks, duplicates, external laboratory checks) and whether acceptable levels of accuracy (ie lack of bias) and precision have been established.</i> 	<ul style="list-style-type: none"> • <i>Samples have been submitted to AGAT laboratories.</i> • <i>AGAT is an internationally certified independent service provider. Industry standard assay quality control techniques will be used for lithium related elements.</i> • <i>Samples are submitted for multi-element ICP analysis</i> • <i>Sodium Peroxide Fusion is used followed by combined ICP-OES and ICP-MS analyses (58 elements).</i>
Verification of sampling and assaying	<ul style="list-style-type: none"> • <i>The verification of significant intersections by either independent or alternative company personnel.</i> • <i>The use of twinned holes.</i> • <i>Documentation of primary data, data entry</i> 	<ul style="list-style-type: none"> • <i>No verification of sampling and assaying have been completed by BM8 to date.</i> • <i>Selected sample results which are considered to be</i>

Criteria	JORC Code explanation	Commentary
	<p><i>procedures, data verification, data storage (physical and electronic) protocols.</i></p> <ul style="list-style-type: none"> • <i>Discuss any adjustment to assay data.</i> 	<p><i>significant will be subjected to resampling by the company in the future.</i></p>
Location of data points	<ul style="list-style-type: none"> • <i>Accuracy and quality of surveys used to locate drill holes (collar and down-hole surveys), trenches, mine workings and other locations used in Mineral Resource estimation.</i> • <i>Specification of the grid system used.</i> • <i>Quality and adequacy of topographic control.</i> 	<ul style="list-style-type: none"> • <i>The drill hole collar positions in table 1 have been located by handheld GPS.</i> • <i>On completion of drilling program, collar positions will be located by digital GPS and reports updated accordingly.</i> • <i>The grid datum is NAD83 Zone 16N.</i> • <i>Downhole surveys have been collected every 30m utilizing gyro tool.</i>
Data spacing and distribution	<ul style="list-style-type: none"> • <i>Data spacing for reporting of Exploration Results.</i> • <i>Whether the data spacing and distribution is sufficient to establish the degree of geological and grade continuity appropriate for the Mineral Resource and Ore Reserve estimation procedure(s) and classifications applied.</i> • <i>Whether sample compositing has been applied.</i> 	<ul style="list-style-type: none"> • <i>This is a preliminary drilling campaign and therefore suitable spacing and distribution to establish the degree of geological and grade continuity appropriate for the Mineral Resource and Ore Reserve estimation is yet to be determined.</i>
Orientation of data in relation to geological structure	<ul style="list-style-type: none"> • <i>Whether the orientation of sampling achieves unbiased sampling of possible structures and the extent to which this is known, considering the deposit type.</i> • <i>If the relationship between the drilling orientation and the orientation of key mineralised structures is considered to have introduced a sampling bias, this should be assessed and reported if material.</i> 	<ul style="list-style-type: none"> • <i>Drilling has been in order to sample across the strike of the mineralisation, based on surface mapping and limited historical drilling. However, as this drilling is preliminary, further drilling is required to determine the orientation of mineralisation in this area.</i>
Sample security	<ul style="list-style-type: none"> • <i>The measures taken to ensure sample security.</i> 	<ul style="list-style-type: none"> • <i>At all times samples were in the custody and control of the Company's representatives until delivery to the laboratory where samples are held in a secure enclosure pending processing.</i>
Audits or reviews	<ul style="list-style-type: none"> • <i>The results of any audits or reviews of sampling techniques and data.</i> 	<ul style="list-style-type: none"> • <i>No external audit has been undertaken at this stage.</i>

Section 2 Reporting of Exploration Results

(Criteria listed in the preceding section also apply to this section.)

Criteria	JORC Code explanation	Commentary
Mineral tenement	<ul style="list-style-type: none"> • <i>Type, reference name/number, location and ownership including agreements or material issues with third parties such as joint</i> 	<ul style="list-style-type: none"> • <i>All claims relating to the Falcon Lake Lithium Project minerals claims are in good</i>

Criteria	JORC Code explanation	Commentary
and land tenure status	<p>ventures, partnerships, overriding royalties, native title interests, historical sites, wilderness or national park and environmental settings.</p> <ul style="list-style-type: none"> The security of the tenure held at the time of reporting along with any known impediments to obtaining a licence to operate in the area. 	<p>standing and are 90% owned by the company.</p> <ul style="list-style-type: none"> Please refer to the company prospectus (dated 2nd Feb 2023) Annexure A, Table 3:1 for full table of Falcon Lake mineral claims. No known impediments.
Exploration done by other parties	<ul style="list-style-type: none"> Acknowledgment and appraisal of exploration by other parties. 	<ul style="list-style-type: none"> British Canadian Lithium Mines Ltd (“BCLM”) completed diamond drill (DD) holes in 1956. No core or collars have been located. Canadian Ore Bodies completed 3 DD holes in 2010. Argonaut Resources NL drilled six holes in 2016. Core and collars have been located. A summary of historical exploration activities is included in the Independent Geologists Report within the Company’s Prospectus (dated 2nd Feb 2023) Annexure A.
Geology	<ul style="list-style-type: none"> Deposit type, geological setting and style of mineralisation. 	<ul style="list-style-type: none"> The Falcon Lake Project is underlain by Archean supracrustal and plutonic rocks of the Eastern Wabigoon Sub-province of the Superior Province along the northern edge of Lake Nipigon The Falcon Lake Pegmatite Group consists of several pegmatite dykes that intrude amphibolitized mafic meta-volcanic rocks. These pegmatites are spodumene-subtype and are tantalum-rich.
Drill hole Information	<ul style="list-style-type: none"> A summary of all information material to the understanding of the exploration results including a tabulation of the following information for all Material drill holes: <ul style="list-style-type: none"> easting and northing of the drill hole collar elevation or RL (Reduced Level – elevation above sea level in metres) of the drill hole collar dip and azimuth of the hole down hole length and interception depth 	<ul style="list-style-type: none"> All drill hole collar locations and mineralised intercepts have been reported in this report for all holes completed to date. No relevant data has been excluded from this report.

Criteria	JORC Code explanation	Commentary
	<ul style="list-style-type: none"> ○ hole length. ● <i>If the exclusion of this information is justified on the basis that the information is not Material and this exclusion does not detract from the understanding of the report, the Competent Person should clearly explain why this is the case.</i> 	
Data aggregation methods	<ul style="list-style-type: none"> ● <i>In reporting Exploration Results, weighting averaging techniques, maximum and/or minimum grade truncations (eg cutting of high grades) and cut-off grades are usually Material and should be stated.</i> ● <i>Where aggregate intercepts incorporate short lengths of high grade results and longer lengths of low grade results, the procedure used for such aggregation should be stated and some typical examples of such aggregations should be shown in detail.</i> ● <i>The assumptions used for any reporting of metal equivalent values should be clearly stated.</i> 	<ul style="list-style-type: none"> ● <i>Low-cut of 0.1% Li₂O has been applied to reported intercept assay values.</i> ● <i>Intercept grades have been calculated by weighted average.</i> ● <i>Internal highs have been calculated by selecting the relatively higher-grade internal zone when compared to the entire intercept. These zones are continuous downhole.</i> ● <i>No metal equivalent values are reported.</i>
Relationship between mineralisation widths and intercept lengths	<ul style="list-style-type: none"> ● <i>These relationships are particularly important in the reporting of Exploration Results.</i> ● <i>If the geometry of the mineralisation with respect to the drill hole angle is known, its nature should be reported.</i> ● <i>If it is not known and only the down hole lengths are reported, there should be a clear statement to this effect (eg 'down hole length, true width not known').</i> 	<ul style="list-style-type: none"> ● <i>Only downhole lengths are reported.</i> ● <i>The exact geometry of the mineralisation is not known as such true width is not known.</i>
Diagrams	<ul style="list-style-type: none"> ● <i>Appropriate maps and sections (with scales) and tabulations of intercepts should be included for any significant discovery being reported These should include, but not be limited to a plan view of drill hole collar locations and appropriate sectional views.</i> 	<ul style="list-style-type: none"> ● <i>Appropriate plan views are included.</i>
Balanced reporting	<ul style="list-style-type: none"> ● <i>Where comprehensive reporting of all Exploration Results is not practicable, representative reporting of both low and high grades and/or widths should be practiced to avoid misleading reporting of Exploration Results.</i> 	<ul style="list-style-type: none"> ● <i>All collar and mineralisation information have been included for drill holes completed to date.</i> ● <i>All returned assays have been reported by average intercept grades.</i>
Other substantive exploration data	<ul style="list-style-type: none"> ● <i>Other exploration data, if meaningful and material, should be reported including (but not limited to): geological observations; geophysical survey results; geochemical survey results; bulk samples – size and method of treatment; metallurgical test results; bulk density, groundwater, geotechnical and rock characteristics; potential deleterious or contaminating</i> 	<ul style="list-style-type: none"> ● <i>All previous exploration data completed to date have been reported within the Independent Geologists Report within the Company's Prospectus (dated 2nd Feb 2023).</i> ● <i>No other substantive exploration data is available</i>

Criteria	JORC Code explanation	Commentary
	<i>substances.</i>	<i>at this time.</i>
Further work	<ul style="list-style-type: none"> <i>The nature and scale of planned further work (eg tests for lateral extensions or depth extensions or large-scale step-out drilling).</i> <i>Diagrams clearly highlighting the areas of possible extensions, including the main geological interpretations and future drilling areas, provided this information is not commercially sensitive.</i> 	<ul style="list-style-type: none"> <i>Further work planned at Falcon Lake Lithium Project includes exploration drilling, field mapping, geochemistry, geophysics and prospecting works.</i>

