

QX RESOURCES

ASX:QXR



THE X FACTOR IN BATTERY MINERALS

LITHIUM - BRINE & HARD ROCK
NICKEL AND COPPER-AU-MO

OCTOBER 2023



DISCLAIMER

QX RESOURCES



FORWARD LOOKING STATEMENTS

This presentation by QX Resources Limited (“Company”, “QXR”) contains forecasts, projections and forward-looking information. Although the Company believes that its expectations, estimates and forecast outcomes are based on reasonable assumptions it can give no assurance that these will be achieved. Expectations and estimates and projections and information provided by the Company are not a guarantee of future performance and involve unknown risks and uncertainties, many of which are out of QXR’s control. Actual results and developments will almost certainly differ materially from those expressed or implied. QXR has not audited or investigated the accuracy or completeness of the information, statements and opinions contained in this announcement. To the maximum extent permitted by applicable laws, QXR makes no representation and can give no assurance, guarantee or warranty, express or implied, as to, and takes no responsibility and assumes no liability for the authenticity, validity, accuracy, suitability or completeness of, or any errors in or omission from, any information, statement or opinion contained in this report and without prejudice, to the generality of the foregoing, the achievement or accuracy of any forecasts, projections or other forward looking information contained or referred to in this report. Investors should make and rely upon their own enquiries before deciding to acquire or deal in the Company’s securities.

This presentation and contained information is not for circulation within the USA

COMPETENT PERSONS STATEMENT

The information in this presentation that relates to the Queensland projects in the Drummond Basin and the Lithium Hard Rock projects in the Pilabara are based on information compiled by Mr. Roger Jackson, a Director and Shareholder of the Company, who is a Fellow of the Australasian Institute of Mining and Metallurgy (MAusIMM), Member of Australasian Institute of Geoscientists (AIG) and a Member of Australian Institute of Company Directors (AICD). Mr. Jackson has sufficient experience which is relevant to the style of mineralisation and type of deposits under consideration and to the activity which he is undertaking to qualify as a Competent Person as defined in the 2012 Edition of the “Australasian Code for Reporting of Exploration results, Mineral Resources and Ore Reserves”. Mr. Jackson consents to the inclusion of the data contained in relevant resource reports used for this announcement as well as the matters, form and context in which the relevant data appears.

The exploration results contained in this announcement were first reported by QXR on 27 May 2023, 17 June 2023, 26 July 2023, 21 August 2023 and 20 September 2023.

QXR confirms that it is not aware of any new information or data that materially affects the exploration results previously announced.

BATTERY MINERALS SUITE

TIER-1 LOCATIONS



LITHIUM BRINES

Large Brine Project
USA - Established infrastructure
Drill ready; Pathway to development



LITHIUM HARD ROCK

4 x Hard rock projects
Pilbara WA - Prime location
Pegmatites located - elevated lithium



NICKEL

High grade 2% nickel-copper-cobalt
Sweden - 6 projects
Own 39% of private Bayrock company



COPPER-GOLD-MOLY

Copper-Gold-Moly prospects
Central Queensland
New exploration to Mining Lease stage



Experienced Board



Steve Promnitz
Managing Director

Technical, Mgmt,
Financial expertise
Previously created
\$2Bn lithium company
from startup



Maurice Feilich
Executive Chairman

Investment market
expertise 30 years
Small cap resources
specialist



Roger Jackson
Non-Exec Director

Qualified geologist
Exploration, mining,
minerals marketing;
Chair AHK, VTX



Dan Smith
Company Secretary

Non-Exec Director
Finance specialist;
Company Secretary;
Chair of DY6



Ben Jarvis
Non-Exec Director

Strategic advisor;
Investor relations
expertise; Multi-sector
experience

CORPORATE SNAPSHOT



ASX:QXR

QXR ASX Chart



Top 20 Shareholders 44%

Largest Shareholders

Suzhou UltraClean Tech 8.7%

Zamia Metals 4.7%



Market Cap

A\$21M at 3 Oct 2023



Shares on Issue

896 M

Options: 60M, Strike prices from 2c to 6.8c



Cash Position

A\$1.8M at 30 June 2023

Other investments valued c.A\$1.2M



Share Price Range 52 Wk

\$ 0.018 - \$0.092

LIBERTY LITHIUM

LARGE USA BRINE PROJECT



**Large Lithium Resource Potential
in Prime Location with Good Infrastructure**

One of largest single USA brine projects
10,250 Ha (25000 acres)
Two times size of Sydney Harbour

Similar to major US brine projects:
Albermarle Silver Peak NV 4500Ha
Pure Energy NV 9400Ha
Ameriwest - 3PL NV
Nevada Sunrise - Gemini

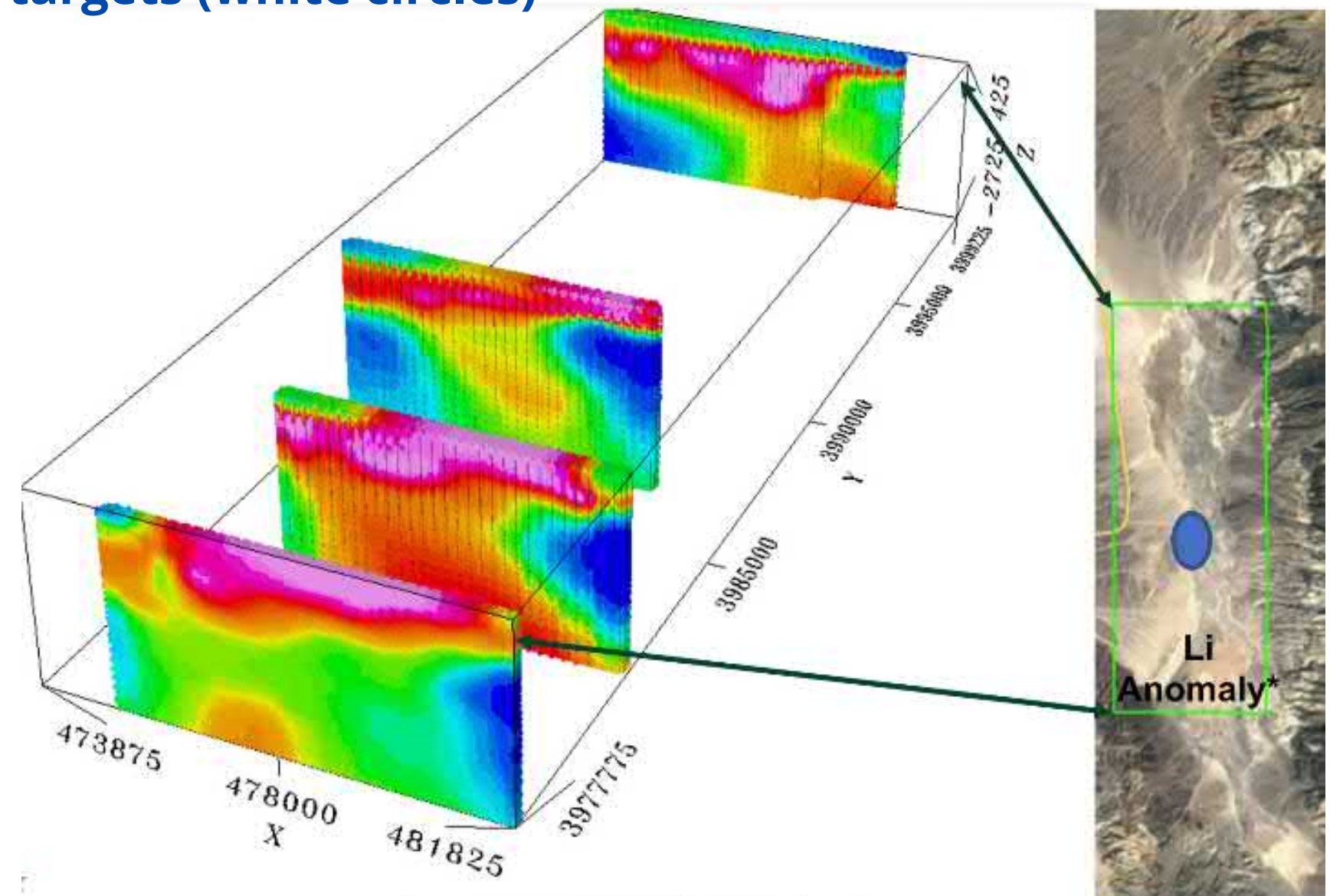
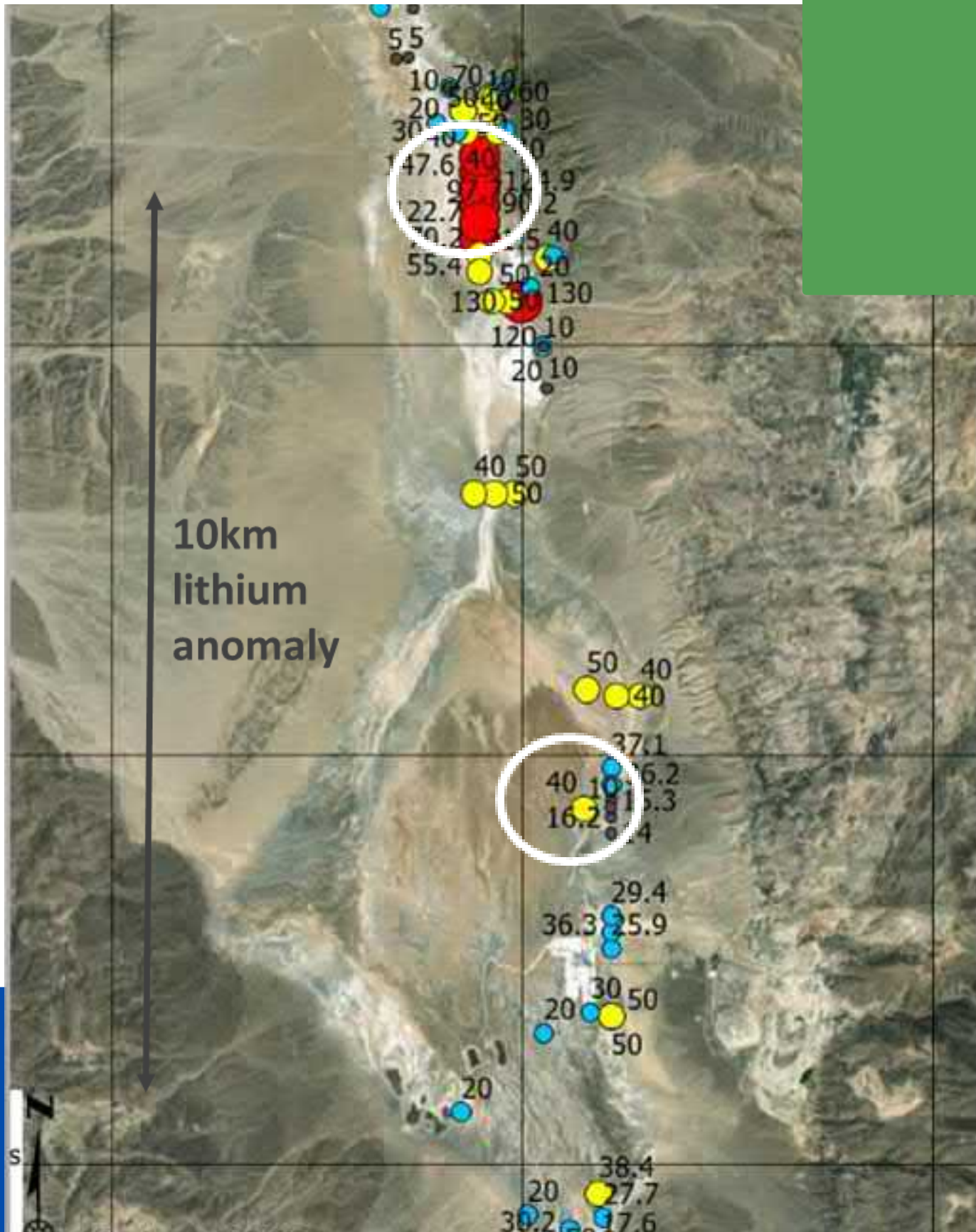
Sealed road access, power, water



LIBERTY LITHIUM

SCALE - 10KM ANOMALY

Surface auger results up to 215 mg/L lithium over 10km
Geophysics (MT) shows potential brine aquifers (in red)
Drill targets (white circles)



LIBERTY LITHIUM LOOKALIKE TO MAJOR PROJECTS



Lithium rich
geothermal springs at surface

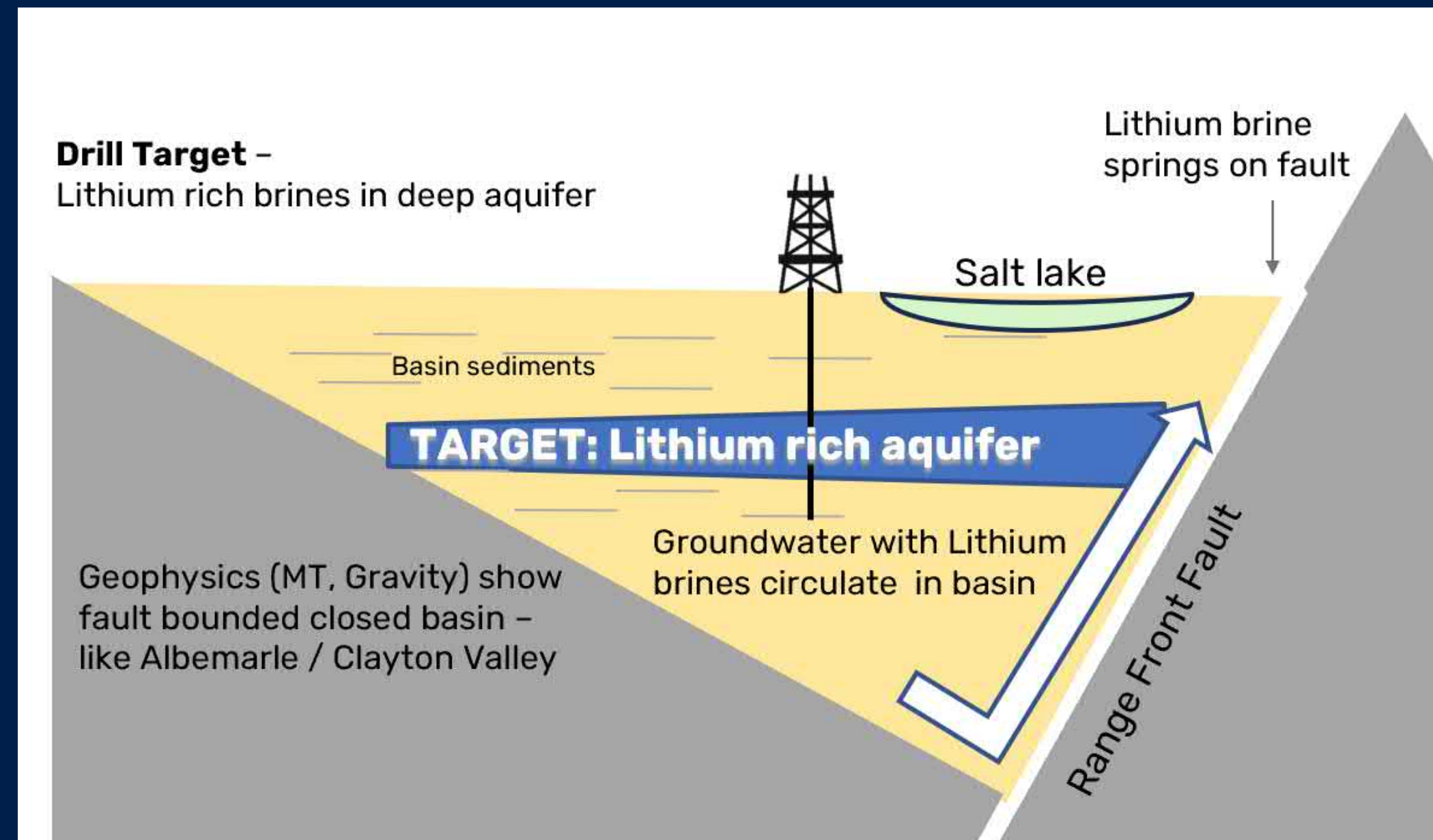
Similar Characteristics
to nearby Albemarle mine / Clayton Valley

- Large Enclosed Basin
- Arid Climate
- Geology similar

Target: Aquifers with Lithium rich Brines

Model: Warm geothermal fluids at surface

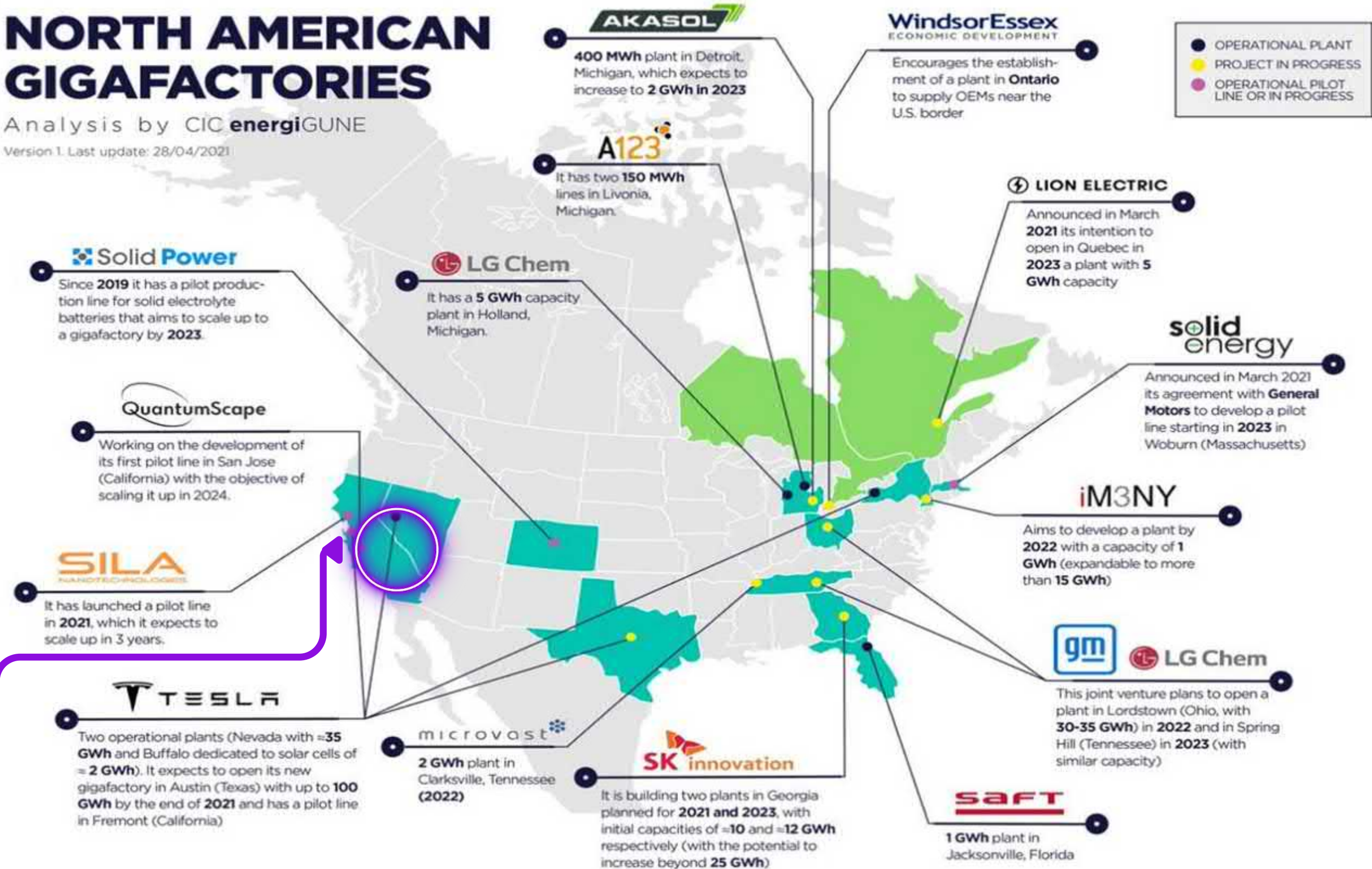
Drilling: Oct/Nov/Dec schedule



LIBERTY LITHIUM

WELL LOCATED - NORTH AMERICAN GIGAFACTORIES

Analysis by CIC energigUNE
Version 1. Last update: 28/04/2021



Liberty Lithium Brine Project

PERMITTING PATHWAY

POSITIVES: NEARBY OPERATIONS INFRASTRUCTURE POTENTIAL GOVT SUPPORT

40km from major 150 year old salt evaporation operation - Seales Valley
Sealed roads; Power; Brackish water available linked to mineral claims
Regulators supportive of new battery minerals operations

California Support to other projects

Inflation Reduction Act

CTR Geothermal lithium -
Governor on-site for opening
US\$1.4 Bn from Fuji Electric



LIBERTY LITHIUM - FAVOURABLE TERMS



**Option to Purchase Agreement and an Operating Agreement
To Earn 75% Interest of the Liberty Lithium Brine Project
From Vendor - IG Lithium LLC.**

EARN-IN PERIOD	Earn-in to 75% of IG Lithium LLC that holds project; QXR manages project
OPTION PAYMENTS	US\$2 million over 27 months (5 tranches) incl. US\$300,000 in Oct 2023
WORK COMMITMENTS	US\$1.2 million exploration over 27 months; Also maintain title
OTHER ITEMS	Ancillary payments US\$75,000 per year Other members free carried to DFS

Liberty Lithium - Project Timeline



Q3,23

Finalise documents
Finalise team
Finalise finance



Q4,23

Drill rig to site
Drill 2 holes
Intersect lithium aquifers
Brine for testwork



Q1-Q2,24

Initial results
If positive;
Drill 4 more holes
Further testwork

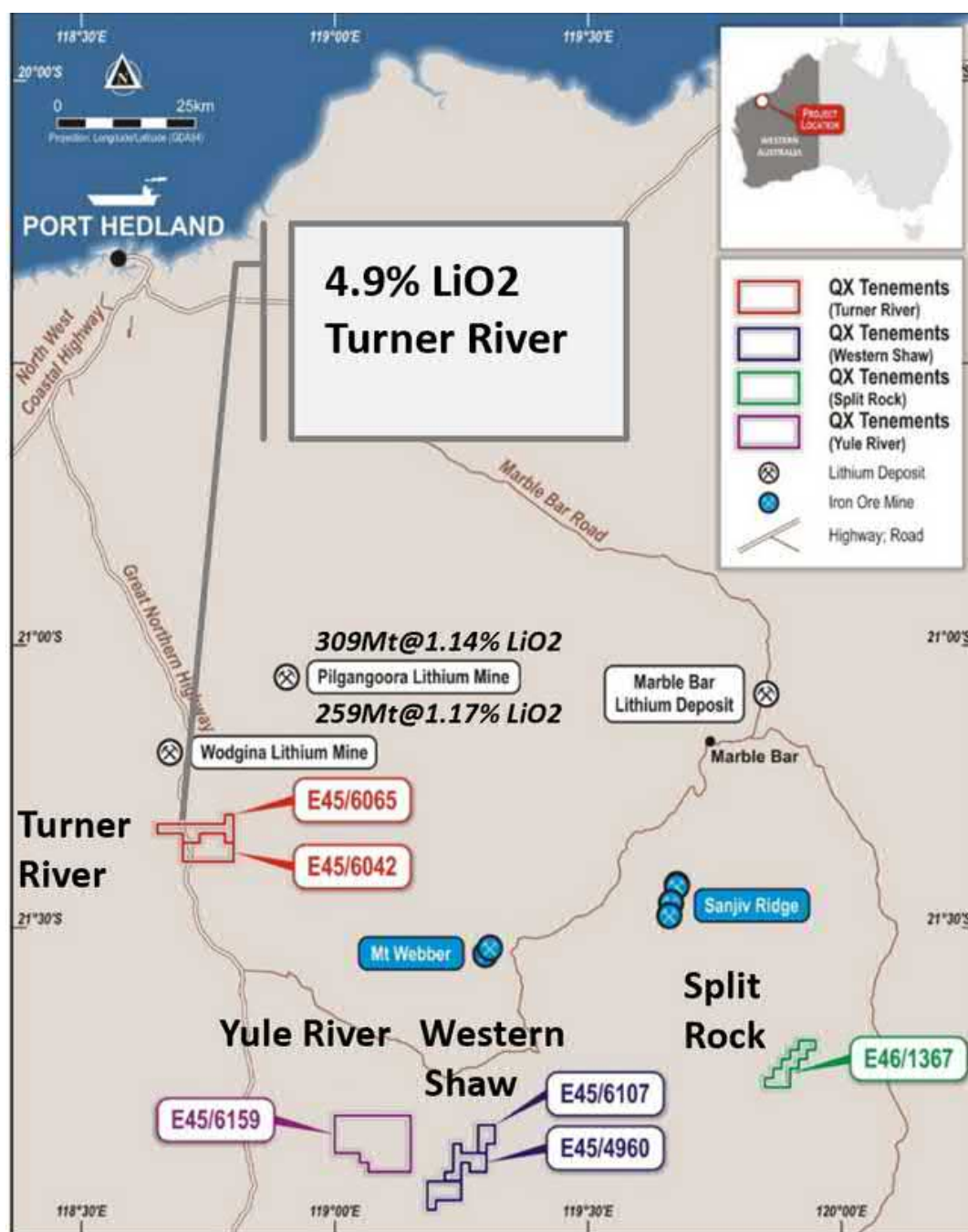


Q3,24

Initial resource
Start Fesibility Study
Engage with end users
Plan expanded drilling
Finalise processing

LITHIUM HARDROCK PILBARA - 4 PROJECTS

Rapid Development Potential



Pilbara - Prolific Proven Hardrock Lithium Province

Large Producers Nearby; Numerous New Discoveries



Four Projects - Numerous Pegmatites Discovered

Pegmatites at Turner River, Western Shaw; Discoveries nearby



Growth Potential - Field Work Underway; New Pegmatites

Short timeline from discovery to production

4 HARDROCK PROJECTS

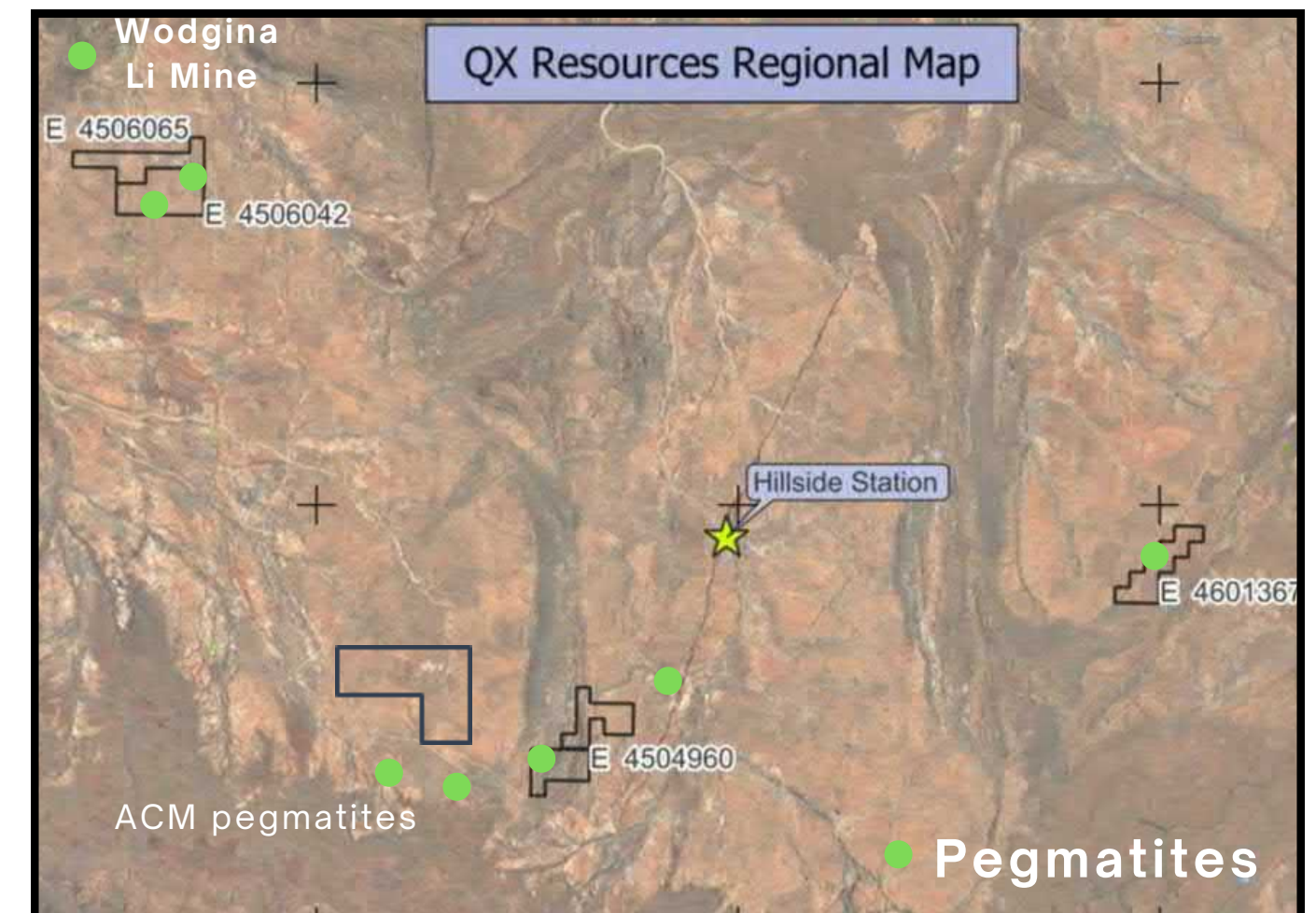


Turner River - 15km from Large Wodgina Mine
- Large Lithium Halo; Rock samples 4.9% LiO₂

Western Shaw / Yule River / Split Rock
- New Pegmatites Discovered
- Target: Granitoid/Greenstone Contact

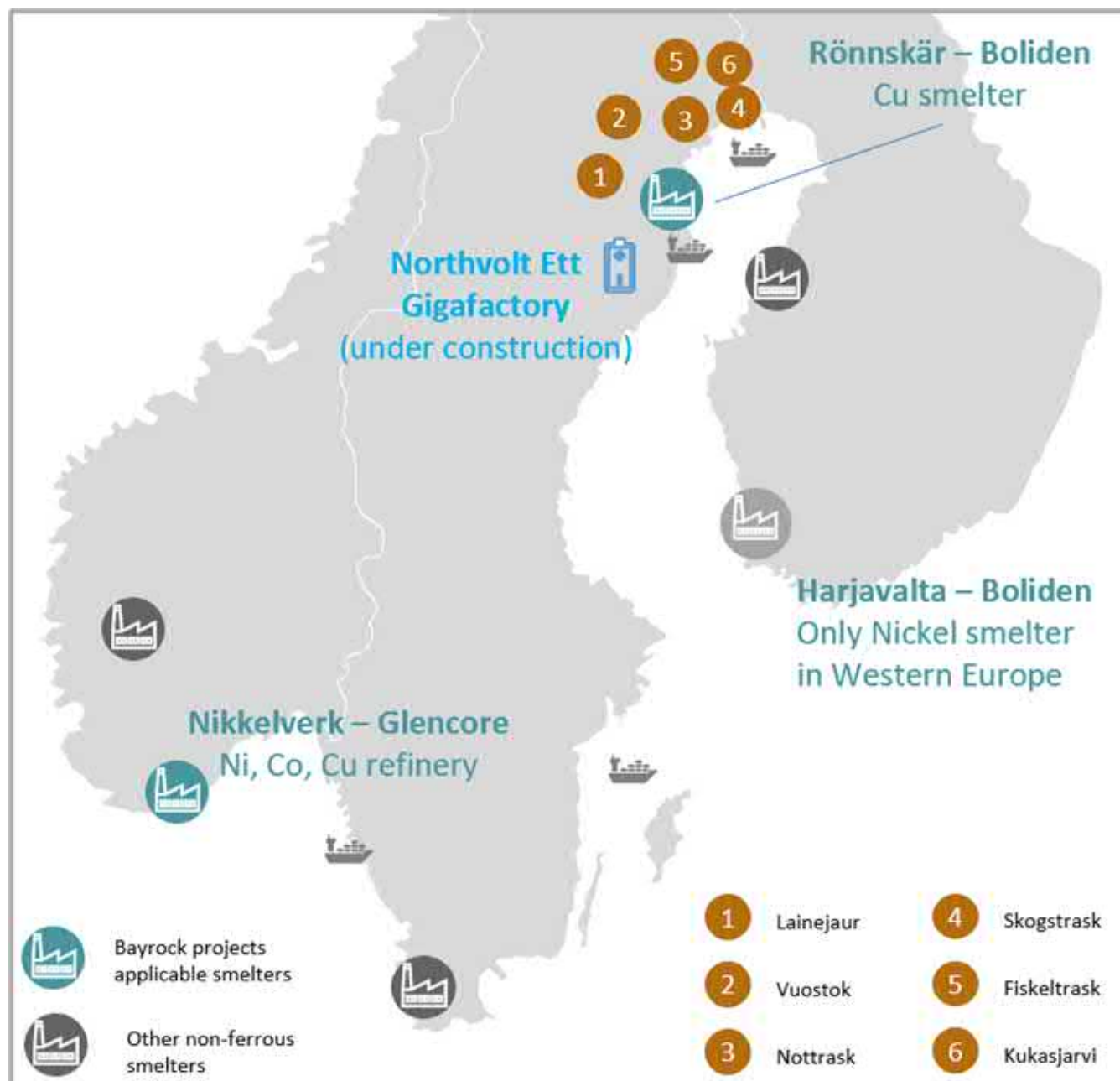
Pegmatites
- Western Shaw

New Pegmatites discovered
Sampling results due late Oct
Airborne survey - October
Recent Discoveries Nearby - ACM



NICKEL - COPPER SWEDEN - BAYROCK

QXR holds 39% Investment in Private Company



High Grades in Past Mining District

Two Projects with 2.1% Nickel; 0.7% Copper - Lainejaur, Vuostok



Six Projects - Large Area 38,000 hectares (94,000 acres)

District Scale Play to Truck material to Central Concentrator



Growth Potential - EU Battery Minerals Support

Friendly Tier-1 jurisdiction close to battery end users

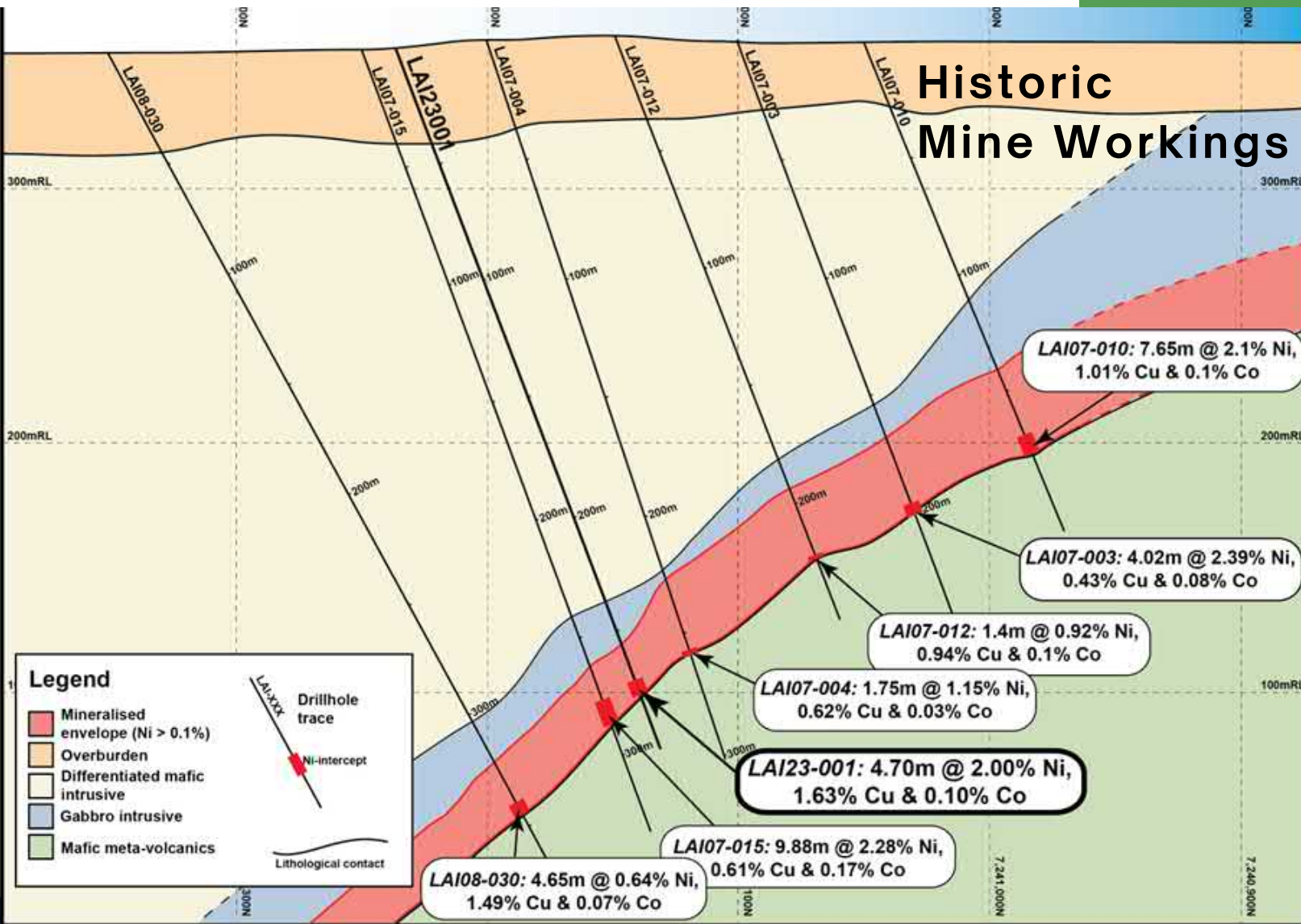


LAINEJAUR

MAJOR NICKEL PROJECT

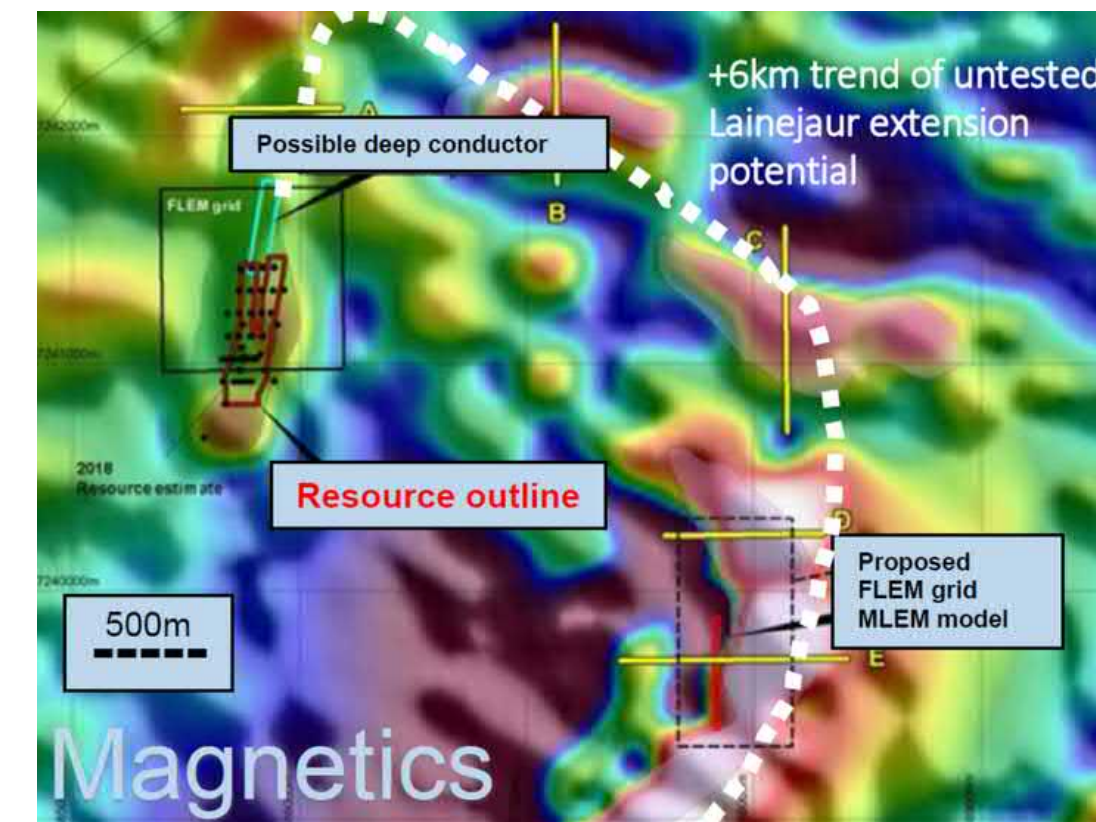
Nickel - Copper - Cobalt Massive Sulphides
High Grade Resource - Fast track to Development
Untested Extensions / Targets in Geophysics

JORC Resource 460,000t @ 2.2% Ni, 0.7% Cu (3.4% Ni Eq)
High metal recoveries in testwork
Near to Infrastructure - Roads, low cost power



Open at Depth

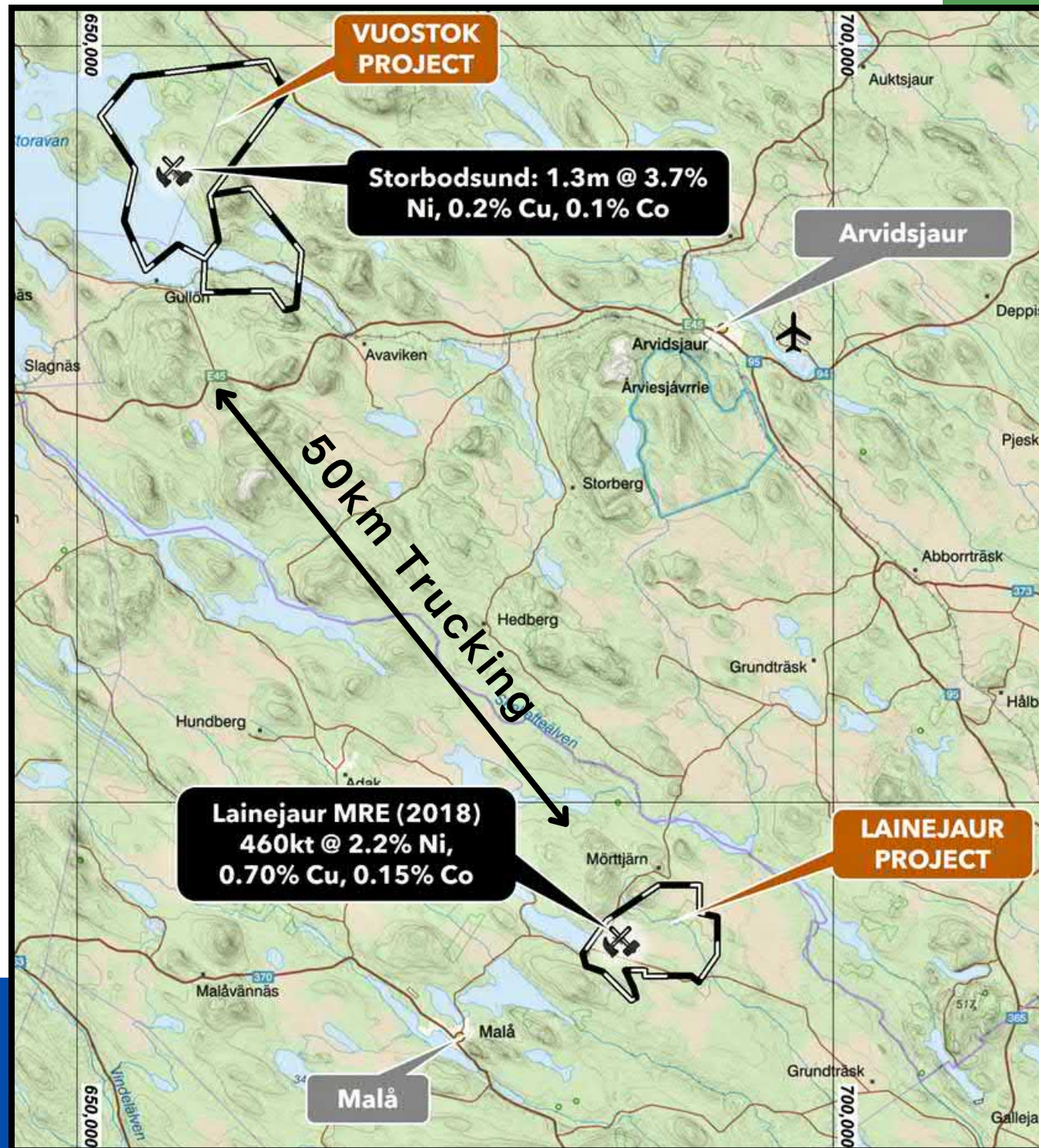
High Grade Drill Results
7.6m @ 2.1% Ni, 1.0% Cu, 0.1% Co
9.9m @ 2.3% Ni, 0.6% Cu, 0.2% Co
5.2m @ 2.6% Ni, 0.1% Cu, 0.1% Co
4.7m @ 2.0% Ni, 1.6% Cu, 0.1% Co





VUOSTOK

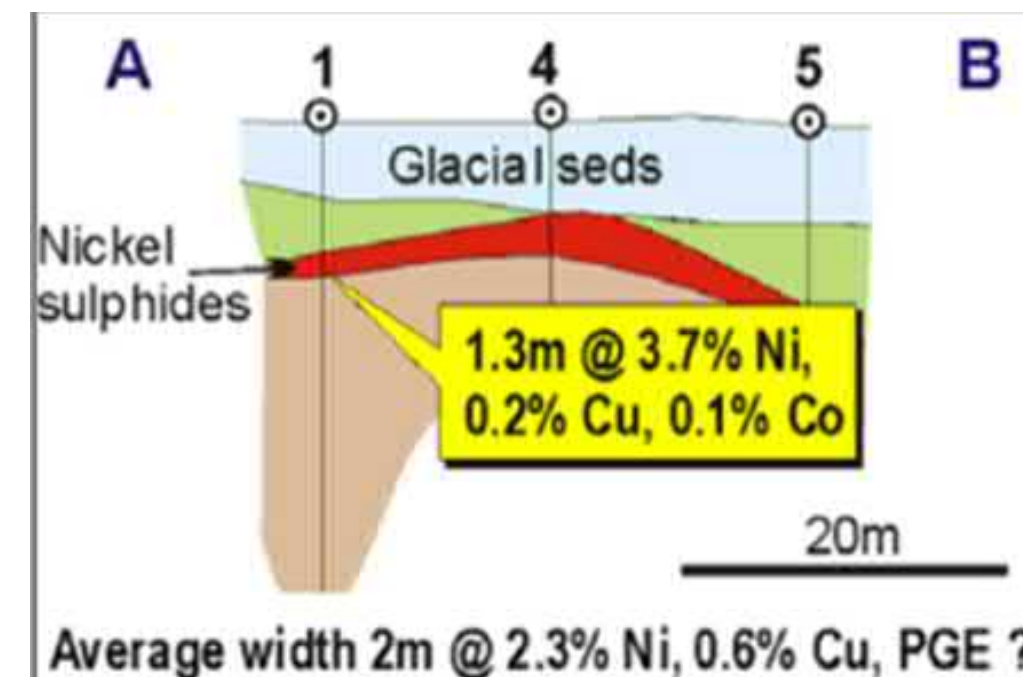
FURTHER NICKEL NEARBY



Nickel - Copper Massive Sulphides Near Surface (8 holes)
Drilling - 6.2m@ 1.2% Ni, 2.2% Cu; 2.4m@ 1.3% Ni, 5.3% Cu
0.7m @ 3.2% Ni, 1.0% Cu

High Grade - Trucking distance from Lainejaur

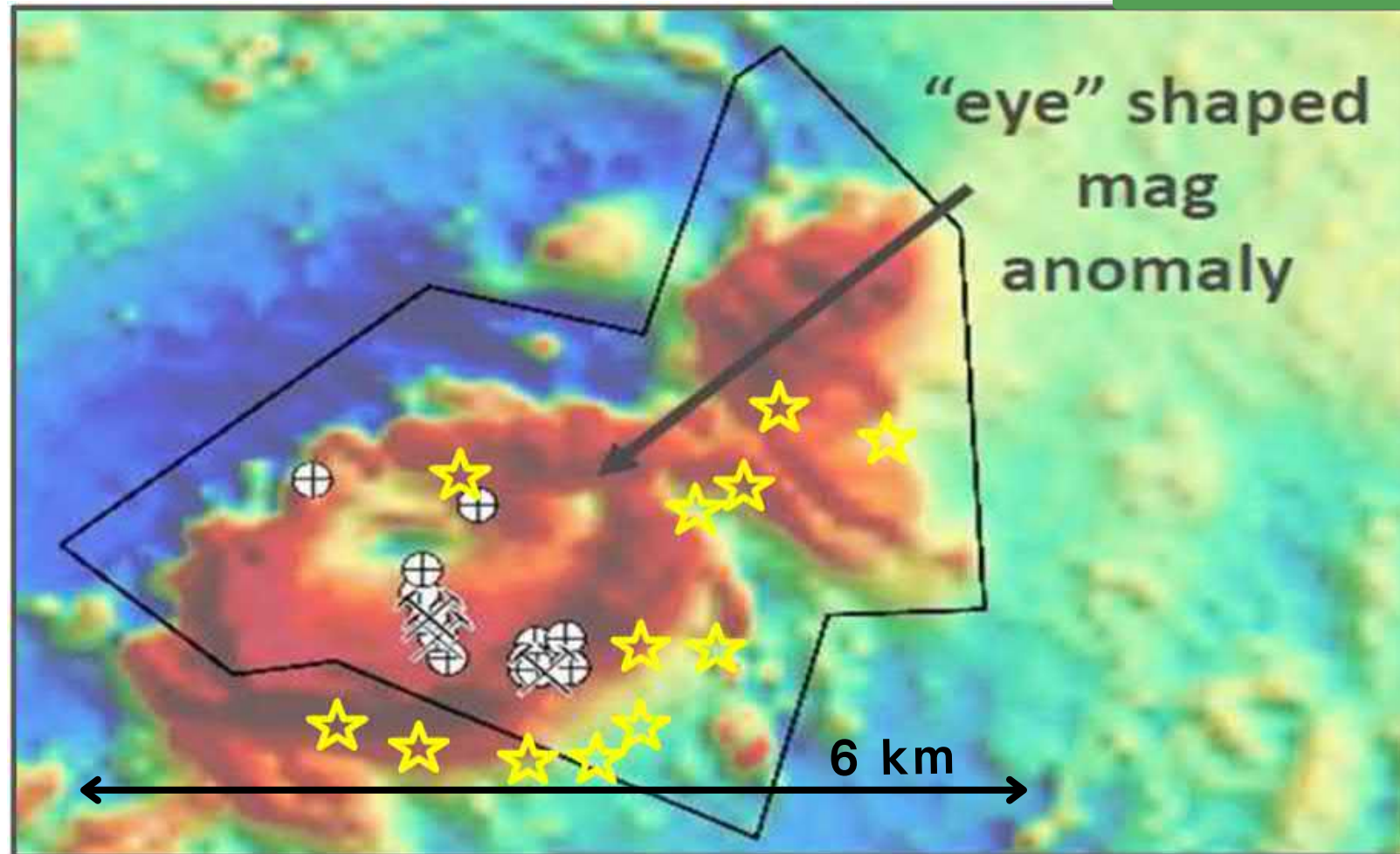
Recent Drilling - massive sulphides near surface (5-18m deep)
District scale development potential





NOTTRASK

UNTESTED COMPANY MAKER



Nickel - Copper Boulders at Surface

Target Similar to Major Mines - Sakatti, Nova

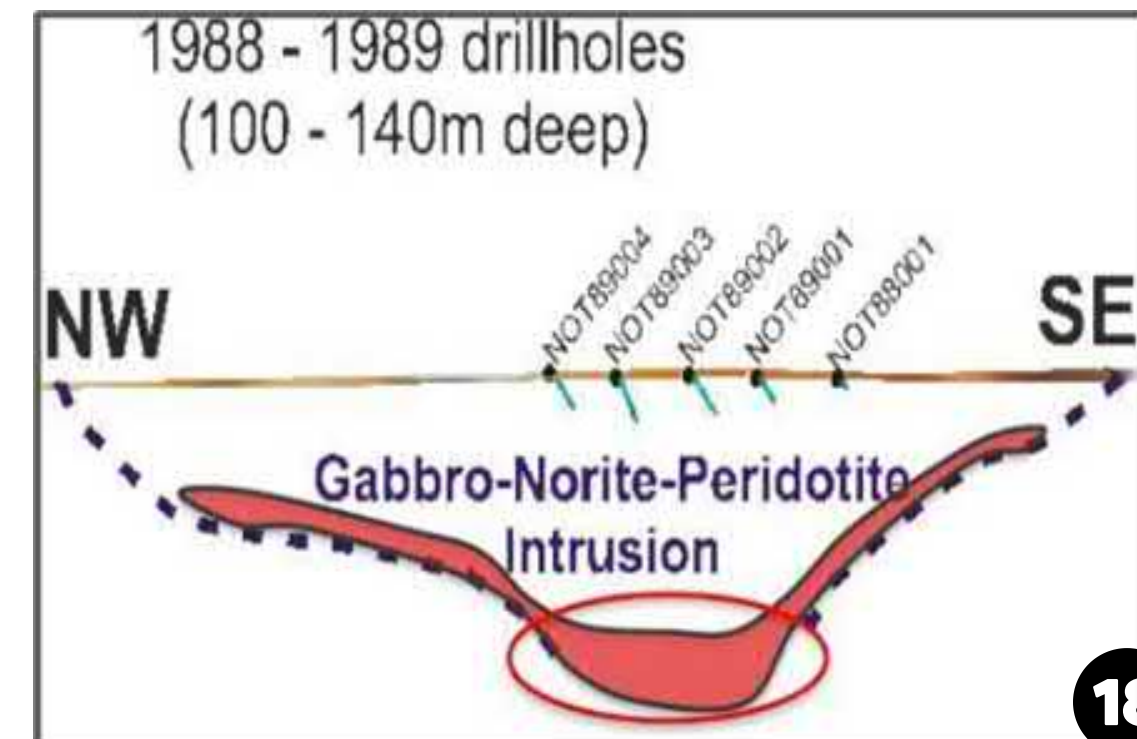
Massive Target at Depth Untested

High grades: Rock chip samples up to 1.2% Ni, 1.8% Cu

Untested: Only one deep drillholes to target below 160m

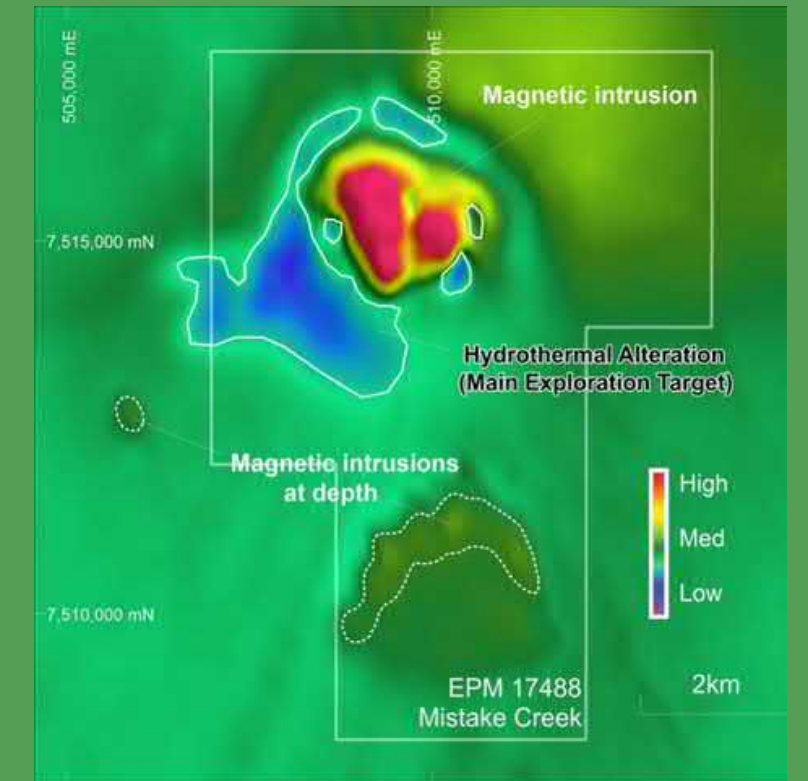
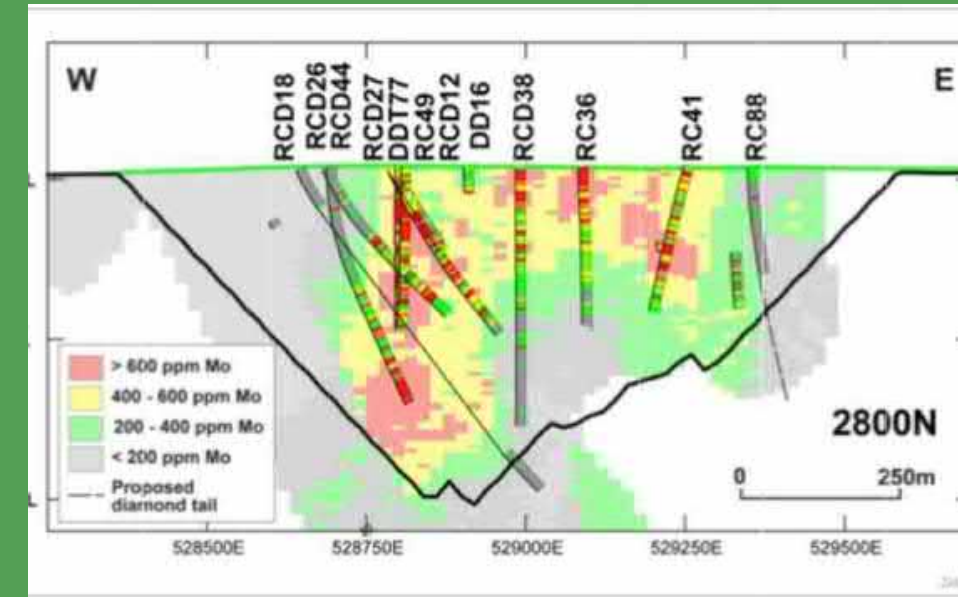
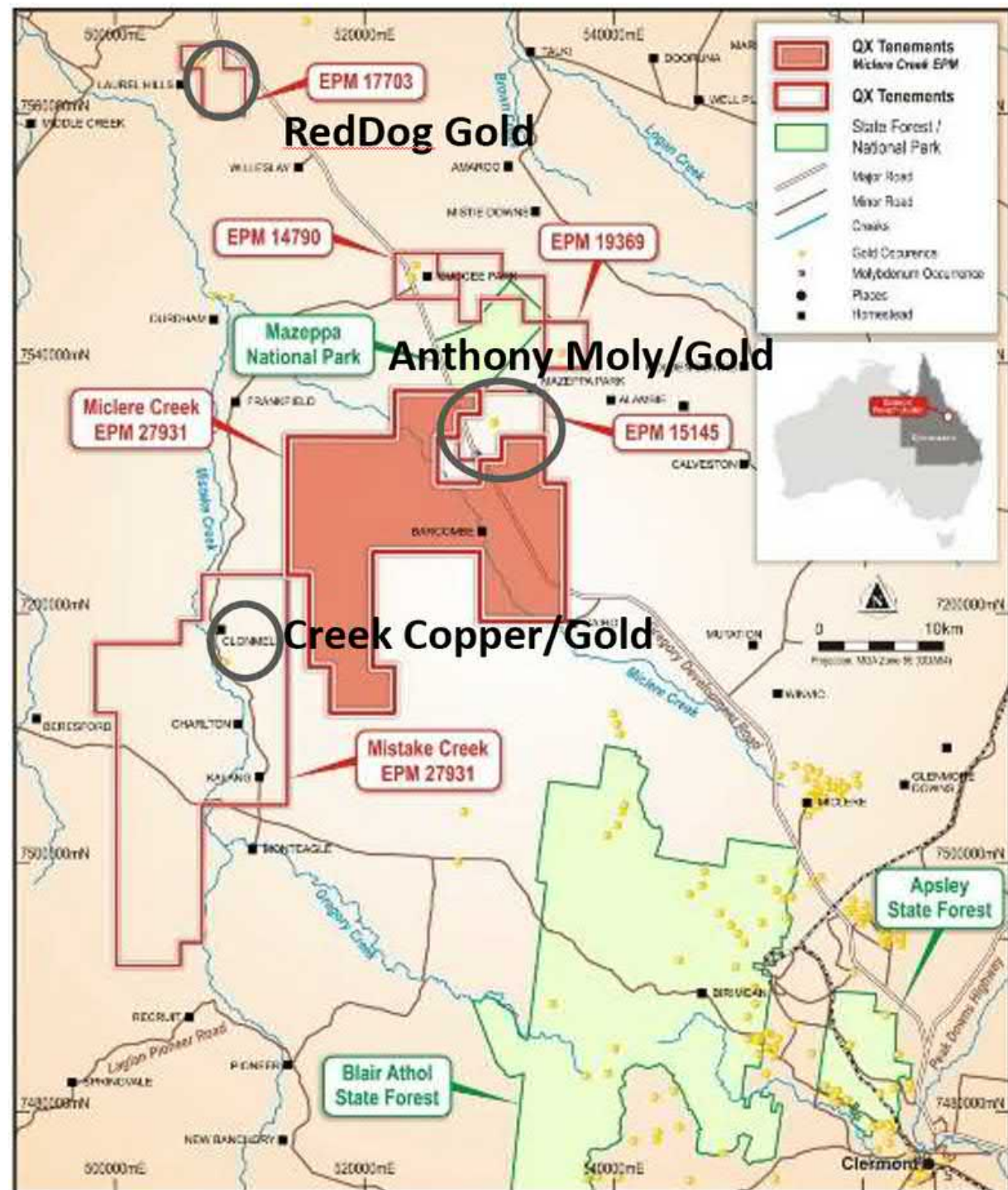
Resemblance to Kevista (142Mt @ 0.22% Ni, 0.35% Cu)

& Sakatti (Finland), Nova (Australia)



Anomaly = 6km x 3km
Stars = Sulphides

COPPER-GOLD-MOLY QUEENSLAND



Porphyry Cu-Au-Mo Projects in Past Mining District

Anthony Deposit: 110 million pounds Mo incl 20mt at 800 ppm Mo

Creek Copper-Gold Porphyry

Regional magnetic feature; IP anomaly: Cu-Au in soils

Gold Veins at Surface - Drill ready

Red Dog: 7m @ 7.1 g/t Au at surface in trenches

Key Takeaways

Battery Minerals Portfolio

- Lithium Brines; Lithium Hardrock; Nickel; Copper

Projects with Scale - Team with Proven Value Creation

Tier 1 Locations

Lithium Brines in Drilling - late Q4, 2023

Lithium Pegmatite Discoveries - Q4,23 Q1,24

Progress Bayrock Nickel into Listed Company



Key Catalysts



TIER-1 LOCATIONS
LITHIUM HARD ROCK
LITHIUM BRINES
NICKEL SULPHIDES
COPPER_GOLD_MOLY

QX RESOURCES
THE X FACTOR
IN BATTERY MINERALS

CONTACT



EMAIL

steve@qxresources.com.au



PHONE NUMBER

+61 42 3333 296



WEBSITE

www.qxresources.com.au

