



Likely Pegmatite Outcrops Encountered at Talon Ridge Lithium

Key Highlights

- On-ground lithium focused exploration at DMC's 100% Talon Ridge Project has been completed.
- Exploration on a 27.5 km anomalous lithium zone within a GSWA defined pegmatite trap ².
- Significant unexpected success - Several outcrop zones identified of possible pegmatites which have been sampled.**
- Geochemical soil sampling results and rockchip results from the outcrop zones due ~late October 2023.

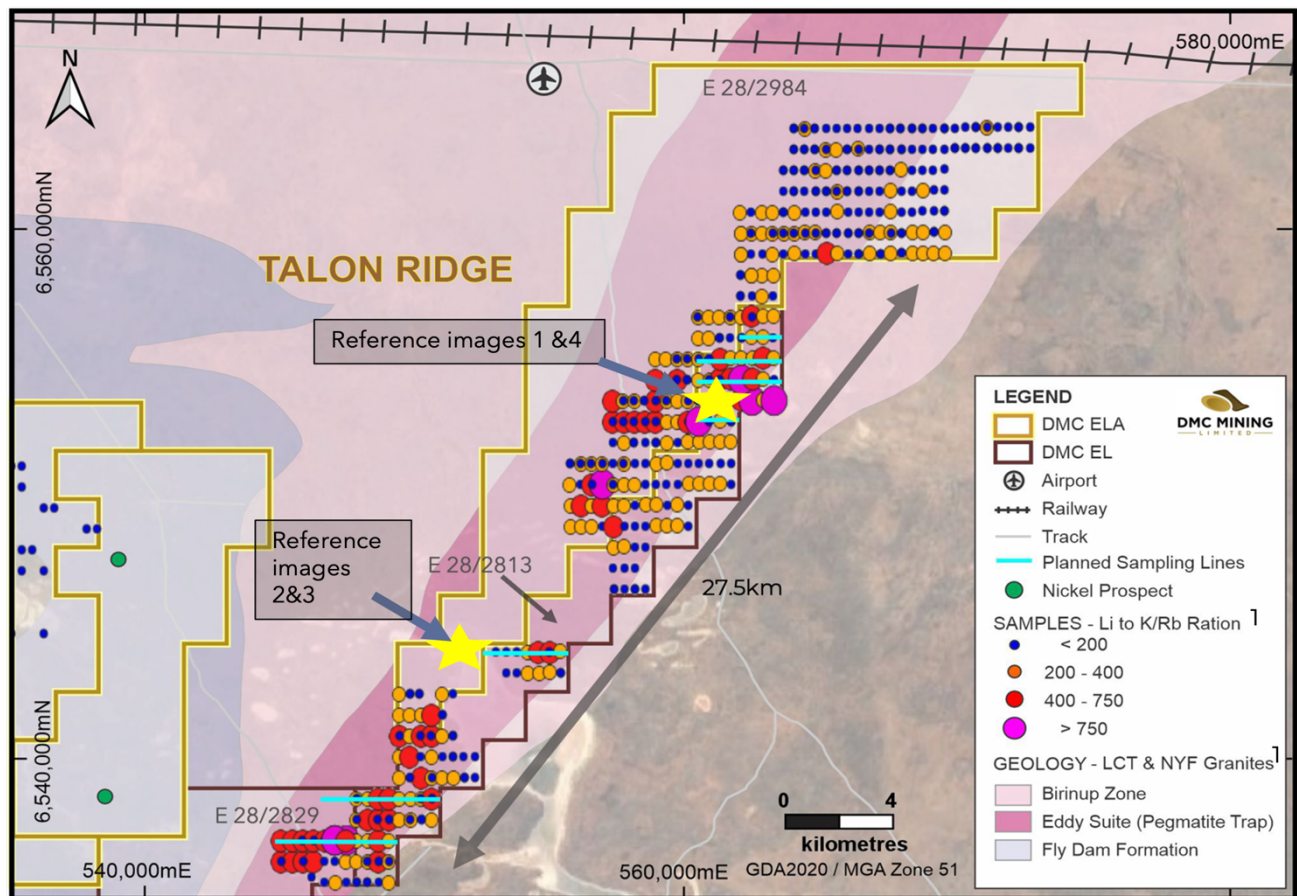


Figure 1: Talon Ridge Project. Yellow stars indicating outcrop location.

DMC Mining Limited

Phone: +61 (08) 63164674

Address: 27/44 St Georges Tce, Perth WA 6000.

Email: info@dmcmining.com.au

Web: www.dmcmining.com.au

ASX Announcement

Western Australian critical metals explorer, **DMC Mining Limited (ASX: DMM)** (DMC or the **Company**) is pleased to announce that on ground lithium exploration has been completed at its 100% Talon Ridge Project.



Reference: 1



Reference: 1 – close up



Reference: 2



Reference: 3



Reference: 4

Outcrop images - Refer Figure 1 for locations

DMC EXECUTIVE CHAIRMAN, DAVID SUMICH, COMMENTED:

We are encouraged by the discovery of outcropping areas within our tenements, indicating likely pegmatites upon viewing. This finding was unexpected given the purpose of the sampling programme and the very limited areas that were visited throughout the 27.5km lithium zone.

We look forward to updating the market as further information comes to hand.

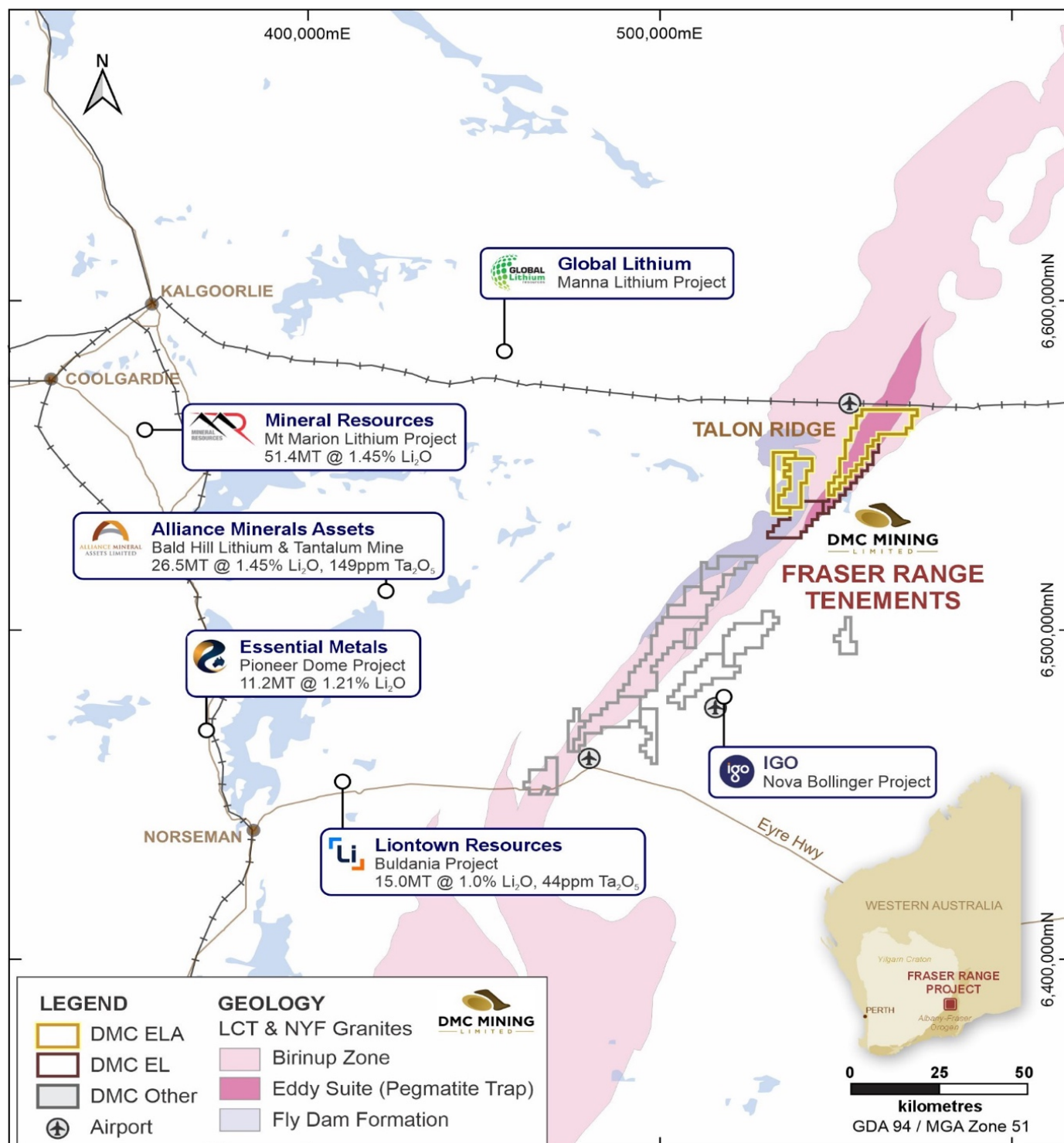


Figure 2 : DMC Fraser Range Tenements, and surrounding Li Resources¹

Next Steps

The Company will await the laboratory results for both the soil geochemistry and rockchips before designing a reconnaissance field programme to further assess the outcrop extents and lithium/mineralisation potential.

References

¹ LCT: Lithium, Caesium, Tantalum

NYF: Niobium, Yttrium, Fluorine

Li: Lithium

K: Potassium

RB: Rubidium

² Rare Element Pegmatites: A mineral System Analysis (P Duuring) Geological Survey of WA.
Record 2020/7

Competent Person's Statement

The information in this announcement that relates to Exploration Results, Mineral Resources or Ore Reserves is based on information compiled by Mr Andrew Dawes who is a Member of the Australasian Institute of Mining and Metallurgy and is a Principal Geologist employed by AHD Resources, independent consultants to DMC. Mr Dawes has sufficient experience which is relevant to the style of mineralisation and types of deposit under consideration and to the activity being undertaken to qualify as a Competent Person as defined in the 2012 Edition of the Joint Ore Reserves Committee (JORC) Australasian Code for Reporting of Exploration Results, Mineral Resources and Ore Reserves. Mr Dawes consents to the inclusion in the report of the matters based on his information in the form and context in which it appears.

Approved for release by the Board of Directors

For further information, please contact:

David Sumich

Executive Chairman

- +61 (08) 63164674
- +61 439 941 092
- 27/44 St Georges Tce, Perth WA 6000.
- info@dmcmining.com.au

Stewart Walters

Market Open

- 0414 644 166
- stewart@marketopen.com.au

Follow us



About DMC MINING LIMITED (ASX:DMM)

DMC Mining is a **dedicated critical metals explorer in Western Australia**. The large tenement holding (~1,250km²) throughout the Fraser Range and at Ravensthorpe, is located at the **margins of the Yilgarn Craton** where numerous world class deposits have been discovered.

As a critical metals explorer, DMC provides investors with excellent exposure to the **growing demand for EV battery metals**.

Debuted on the ASX in late 2021, the company is focused on delivering on its exploration programmes and providing tangible results for investors. Our modern approach to critical metals exploration will result in a more streamlined and cost-efficient exploration process that will ultimately deliver higher returns for investors.



Directors & Management

David Sumich

Executive Chairman

Frank Knezovic

Non Executive Director

Bruce Franzen

Non Executive Director

A.C.N

648 372 516

Shares on Issue (including any escrow)
46.35 mill

Options (\$0.30 exp Dec 2024)
1.0 mill

Options (\$0.20 exp April 2026)
25.575 mill

Cash (as at 30 June)
~A\$1.65 mill