

PURE STAKES HISTORICAL SPODUMENE OCCURENCES – CRYSTAL MOUNTAIN, COLORADO

HIGHLIGHTS

- **13.5 km² of claims containing artisanal beryl mines with noted spodumene occurrences within a past producing lithium pegmatite district.**
 - **Historical reports identify quartz-albite-spodumene-amblygonite mineral assemblages.**
 - **The Crystal Mountain pegmatites are the same age (1.78 Ga old) and mineralogically resemble the pegmatites in the southern Black Hills of South Dakota, currently being explored by Iris Metals Ltd (ASX:IR1).**
 - **The district is typical of many pegmatite districts in the United States which are rich in beryl and phosphates, with columbite-tantalite and spodumene (Cerny 1982).**
 - **The complete absence of modern exploration represents a genuine greenfield opportunity for the company to discover a spodumene rich lithium deposit.**
 - **Reconnaissance mapping and sampling is underway and will target historically documented spodumene bearing pegmatites.**
-

Pure Resources Limited (Pure or Company) is pleased to announce it has staked 13.5 km² of exploration claims in the Crystal Mountain Pegmatite District, Colorado, USA. The claims cover 3 historical, artisanal mines including the Kings Canyon, Debbie Doll and Buckhorn mines.

The Crystal Mountain District

The Crystal Mountain District is approximately 21 km west of Fort Collins, Loveland, Colorado (Figure 1).

The Crystal Mountain pegmatites occur within Precambrian high-grade metamorphic phyllites and schists (Figure 1) and are the same age (1.78 Ga old) and mineralogically resemble the pegmatites in the southern Black Hills of South Dakota (e.g. IR1 Custer Project) (Jacobsen 1986). The Crystal Mountain District is typical of many pegmatite districts in the United States which are rich in beryl and phosphates, with columbite-tantalite and spodumene. It is interpreted that there is a district-wide pegmatite zonation with distance from the Longs Peak - St Vrain and Mount Olympus Granites (source granites) with barren quartz-plagioclase-muscovite-ksp, followed by beryl-bearing pegmatites with the spodumene-bearing pegmatites the most distal (Cerny 1982). Although the Crystal Mountain District is mostly known for its beryl occurrences lithium minerals are present in many of the pegmatites. In particular, the Big Boulder-Kings Canyon lineament is a known lithium-bearing pegmatite area (Jacobsen 1986).

The Kings Canyon Pegmatites are defined by 3 vertically dipping, subparallel veins that outcrop for ~100m along strike (Jacobsen 1985). At surface, the pegmatite veins are up to 1.5m thick with quartz-albite-spodumene- amblygonite mineral assemblages. Spodumene-bearing pegmatites have also been noted at the Debbie Doll, Buckhorn, Big Boulder and Hyatt pegmatites (Thurston 1955). While lithium pegmatites are rare in Colorado, the Kings Canyon, and surrounding, pegmatites are unusual in that they represent the unzoned type of spodumene pegmatites that contain anhedral, phenocrystic spodumene (Jacobsen 1985). The Kings Canyon pegmatites are interpreted to be the same age and mineralogically resemble the pegmatites in the southern Black Hills of South Dakota.



Image 1: View to the north of the western albite-quartz-spodumene pegmatite. Sharp contacts with schist are apparent. (Jacobsen, M.I. 1985)

Following the review of historical literature from the Crystal Mountain District, the Company engaged an in-country geological consultant to stake the 13.5 km² of prospective claims. Although historical literature suggests the Crystal Mountain District is highly prospective for lithium-bearing pegmatites, there has been a complete absence of documented exploration and a lack of geophysical and geochemical data. As such, the Company believes the Kings Canyon Project represents a green-fields opportunity to discover LCT-pegmatites analogous to the recent pegmatite discoveries of the Custer region in South Dakota. The Company plans to complete reconnaissance mapping and sampling to understand the geology and prospectivity of the Project.

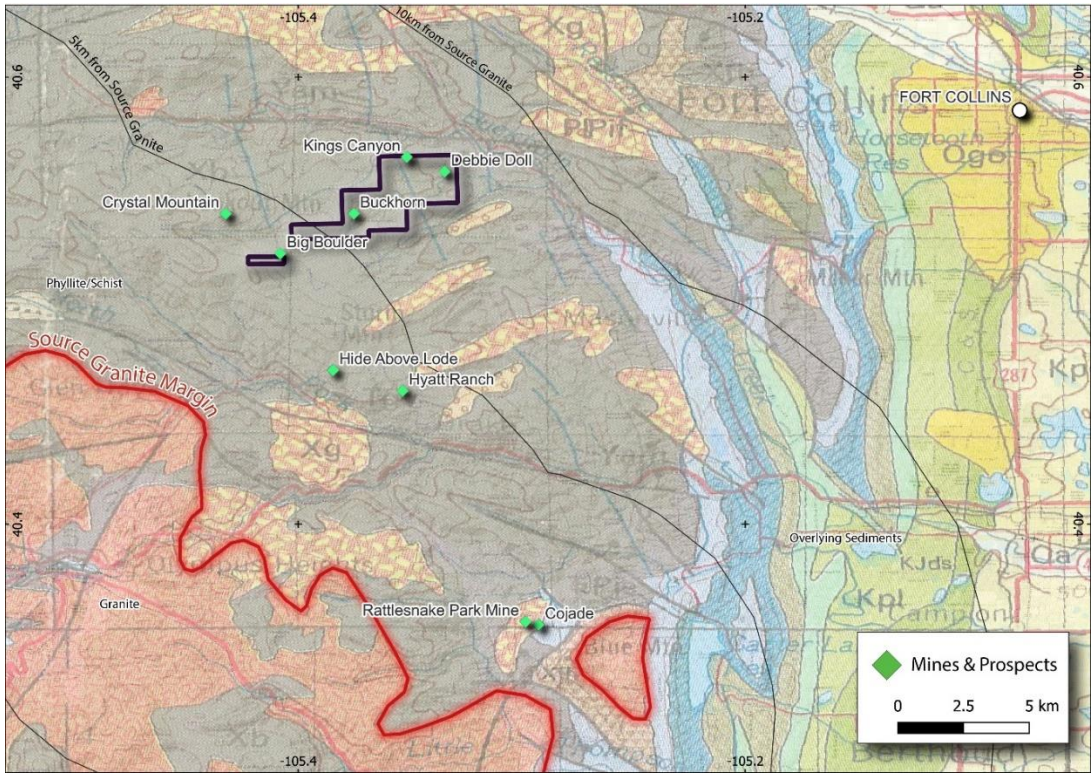


Figure 1: Regional Geology of the Crystal Mountain District (Geology from Tweto 1979)

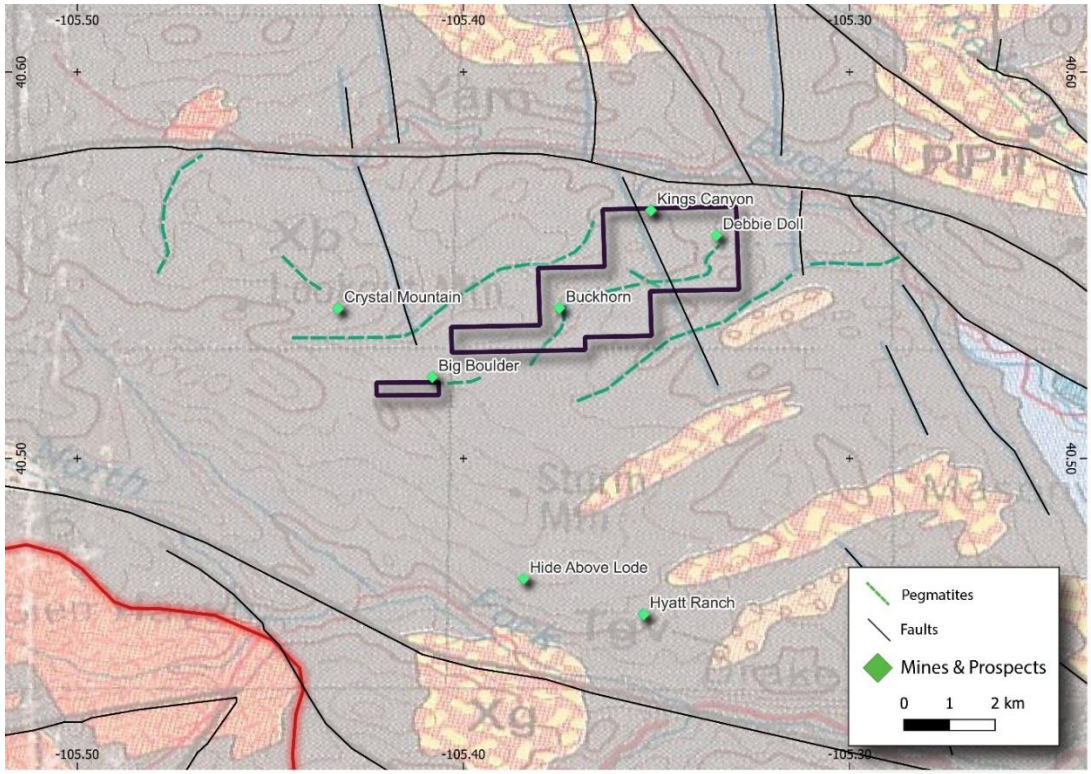


Figure 2: Local Geology of the Kings Canyon District (Geology from Tweto 1979).

- END -

This announcement is approved for release by the Board of Pure Resources Limited.

Mr Patric Glovac
Executive Chairman
Pure Resources Limited

About Pure Resources

Pure's vision is to become an eminent battery metal focussed company on the ASX, either through its existing portfolio of nickel and copper assets, generation of new projects, or acquisitions of existing projects presented to the Company with a strong determination to add Lithium, Rare Earths or Graphite to the company's portfolio.

Forward-Looking Statements

This document includes forward-looking statements. Forward-looking statements include, but are not limited to, statements concerning Pure Resources Limited's planned exploration programs, corporate activities, and any, and all, statements that are not historical facts. When used in this document, words such as "could," "plan," "estimate," "expect," "intend," "may", "potential," "should" and similar expressions are forward-looking statements. Pure Resources Limited believes that it has a reasonable basis for its forward-looking statements; however, forward-looking statements involve risks and uncertainties, and no assurance can be given that actual future results will be consistent with these forward-looking statements. All figures presented in this document are unaudited and this document does not contain any forecasts of profitability or loss.

Competent Persons Statement

The information in this report which relates to Exploration Results is based on information compiled by Dr. James Warren, a Competent Person who is a member of the Australian Institute of Geoscientists. Dr. Warren is a Non-Executive Director of Pure Resources Limited. Dr. Warren has sufficient experience relevant to the style of mineralisation and type of deposit under consideration and to the activity he is undertaking to qualify as a Competent Person as defined in the 2012 Edition of the "Australian Code of Reporting of Exploration Results, Mineral Resources and Ore Reserves". Dr. Warren consents to the inclusion in this report of the matters based on the information in the form and context in which it appears.

References

Thurston, W.R. 1955, Pegmatites of the Crystal Mountain District, Larimer County, Colorado: U.S. Geol. Survey bulletin 1011.

Tweto, O. 1979, Geologic Map of Colorado: U.S. Geological Survey Special Geologic Map, scale 1:500,000.

Jacobsen, M.I. 1985, Kings Canyon Lithium Pegmatites, Crystal Mountain District, Larimer County, Colorado.

Jacobsen, M.I. 1986, Pegmatites of the Crystal Mountain District, Larimer County, Colorado.

Green, G.N., 1992, The Digital Geologic Map of Colorado in ARC/INFO Format: U.S. Geological Survey Open-File Report 92-0507, 9 p.; <http://pubs.usgs.gov/of/1992/ofr-92-0507/>

APPENDIX I – Colorado Claim Applications

ClaimName	Township	Range	State	Section	Lat_WGS84	Long_WGS84	PointType
LCS-1	7N	71W	CO	21	40.56292695	-105.3581357	Corner
LCS-1	7N	71W	CO	21	40.56281111	-105.3638924	Corner
LCS-1	7N	71W	CO	21	40.5644574	-105.3639498	Corner
LCS-1	7N	71W	CO	21	40.56457324	-105.3581931	Corner
LCS-2	7N	71W	CO	21	40.56304279	-105.3523791	Corner
LCS-2	7N	71W	CO	21	40.56292695	-105.3581357	Corner
LCS-2	7N	71W	CO	21	40.56457324	-105.3581931	Corner
LCS-2	7N	71W	CO	21	40.56468907	-105.3524365	Corner
LCS-3	7N	71W	CO	21	40.56315863	-105.3466224	Corner
LCS-3	7N	71W	CO	21	40.56304279	-105.3523791	Corner
LCS-3	7N	71W	CO	21	40.56468907	-105.3524365	Corner
LCS-3	7N	71W	CO	21	40.56480491	-105.3466798	Corner
LCS-4	7N	71W	CO	21	40.56327447	-105.3408658	Corner
LCS-4	7N	71W	CO	21	40.56315863	-105.3466224	Corner
LCS-4	7N	71W	CO	21	40.56480491	-105.3466798	Corner
LCS-4	7N	71W	CO	21	40.56492075	-105.3409231	Corner
LCS-5	7N	71W	CO	22	40.56339031	-105.3351091	Corner
LCS-5	7N	71W	CO	22	40.56327447	-105.3408658	Corner
LCS-5	7N	71W	CO	22	40.56492075	-105.3409231	Corner
LCS-5	7N	71W	CO	22	40.56503658	-105.3351665	Corner
LCS-6	7N	71W	CO	22	40.56350615	-105.3293524	Corner
LCS-6	7N	71W	CO	22	40.56339031	-105.3351091	Corner
LCS-6	7N	71W	CO	22	40.56503658	-105.3351665	Corner
LCS-6	7N	71W	CO	22	40.56515242	-105.3294098	Corner
LCS-7	7N	71W	CO	22	40.56185983	-105.329295	Corner
LCS-7	7N	71W	CO	22	40.56174399	-105.3350517	Corner
LCS-7	7N	71W	CO	22	40.56339031	-105.3351091	Corner
LCS-7	7N	71W	CO	22	40.56350615	-105.3293524	Corner
LCS-8	7N	71W	CO	22	40.56174399	-105.3350517	Corner
LCS-8	7N	71W	CO	22	40.56162815	-105.3408084	Corner
LCS-8	7N	71W	CO	22	40.56327447	-105.3408658	Corner
LCS-8	7N	71W	CO	22	40.56339031	-105.3351091	Corner
LCS-9	7N	71W	CO	21	40.56162815	-105.3408084	Corner
LCS-9	7N	71W	CO	21	40.5615123	-105.346565	Corner
LCS-9	7N	71W	CO	21	40.56315863	-105.3466224	Corner
LCS-9	7N	71W	CO	21	40.56327447	-105.3408658	Corner
LCS-10	7N	71W	CO	21	40.5615123	-105.346565	Corner
LCS-10	7N	71W	CO	21	40.56139646	-105.3523217	Corner
LCS-10	7N	71W	CO	21	40.56304279	-105.3523791	Corner
LCS-10	7N	71W	CO	21	40.56315863	-105.3466224	Corner
LCS-11	7N	71W	CO	21	40.56139646	-105.3523217	Corner
LCS-11	7N	71W	CO	21	40.56128062	-105.3580783	Corner

ClaimName	Township	Range	State	Section	Lat_WGS84	Long_WGS84	PointType
LCS-11	7N	71W	CO	21	40.56292695	-105.3581357	Corner
LCS-11	7N	71W	CO	21	40.56304279	-105.3523791	Corner
LCS-12	7N	71W	CO	21	40.56128062	-105.3580783	Corner
LCS-12	7N	71W	CO	21	40.56116478	-105.363835	Corner
LCS-12	7N	71W	CO	21	40.56281111	-105.3638924	Corner
LCS-12	7N	71W	CO	21	40.56292695	-105.3581357	Corner
LCS-13	7N	71W	CO	21	40.55963425	-105.3580209	Corner
LCS-13	7N	71W	CO	21	40.55951841	-105.3637776	Corner
LCS-13	7N	71W	CO	21	40.56116478	-105.363835	Corner
LCS-13	7N	71W	CO	21	40.56128062	-105.3580783	Corner
LCS-14	7N	71W	CO	21	40.5597501	-105.3522643	Corner
LCS-14	7N	71W	CO	21	40.55963425	-105.3580209	Corner
LCS-14	7N	71W	CO	21	40.56128062	-105.3580783	Corner
LCS-14	7N	71W	CO	21	40.56139646	-105.3523217	Corner
LCS-15	7N	71W	CO	21	40.55986594	-105.3465076	Corner
LCS-15	7N	71W	CO	21	40.5597501	-105.3522643	Corner
LCS-15	7N	71W	CO	21	40.56139646	-105.3523217	Corner
LCS-15	7N	71W	CO	21	40.5615123	-105.346565	Corner
LCS-16	7N	71W	CO	21	40.5598179	-105.340751	Corner
LCS-16	7N	71W	CO	21	40.55986594	-105.3465076	Corner
LCS-16	7N	71W	CO	21	40.5615123	-105.346565	Corner
LCS-16	7N	71W	CO	21	40.56162815	-105.3408084	Corner
LCS-17	7N	71W	CO	22	40.56009763	-105.3349943	Corner
LCS-17	7N	71W	CO	22	40.5598179	-105.340751	Corner
LCS-17	7N	71W	CO	22	40.56162815	-105.3408084	Corner
LCS-17	7N	71W	CO	22	40.56174399	-105.3350517	Corner
LCS-18	7N	71W	CO	22	40.56021348	-105.3292376	Corner
LCS-18	7N	71W	CO	22	40.56009763	-105.3349943	Corner
LCS-18	7N	71W	CO	22	40.56174399	-105.3350517	Corner
LCS-18	7N	71W	CO	22	40.56185983	-105.329295	Corner
LCS-19	7N	71W	CO	22	40.55856708	-105.3291802	Corner
LCS-19	7N	71W	CO	22	40.55845123	-105.3349369	Corner
LCS-19	7N	71W	CO	22	40.56009763	-105.3349943	Corner
LCS-19	7N	71W	CO	22	40.56021348	-105.3292376	Corner
LCS-20	7N	71W	CO	22	40.55845123	-105.3349369	Corner
LCS-20	7N	71W	CO	22	40.55833539	-105.3406935	Corner
LCS-20	7N	71W	CO	22	40.5598179	-105.340751	Corner
LCS-20	7N	71W	CO	22	40.56009763	-105.3349943	Corner
LCS-21	7N	71W	CO	21	40.55833539	-105.3406935	Corner
LCS-21	7N	71W	CO	21	40.55821954	-105.3464502	Corner
LCS-21	7N	71W	CO	21	40.55986594	-105.3465076	Corner
LCS-21	7N	71W	CO	21	40.5598179	-105.340751	Corner
LCS-22	7N	71W	CO	21	40.55821954	-105.3464502	Corner

ClaimName	Township	Range	State	Section	Lat_WGS84	Long_WGS84	PointType
LCS-22	7N	71W	CO	21	40.55810369	-105.3522069	Corner
LCS-22	7N	71W	CO	21	40.5597501	-105.3522643	Corner
LCS-22	7N	71W	CO	21	40.55986594	-105.3465076	Corner
LCS-23	7N	71W	CO	21	40.55810369	-105.3522069	Corner
LCS-23	7N	71W	CO	21	40.55798784	-105.3579635	Corner
LCS-23	7N	71W	CO	21	40.55963425	-105.3580209	Corner
LCS-23	7N	71W	CO	21	40.5597501	-105.3522643	Corner
LCS-24	7N	71W	CO	21	40.55798784	-105.3579635	Corner
LCS-24	7N	71W	CO	21	40.55787199	-105.3637202	Corner
LCS-24	7N	71W	CO	21	40.55951841	-105.3637776	Corner
LCS-24	7N	71W	CO	21	40.55963425	-105.3580209	Corner
LCS-25	7N	71W	CO	21	40.55634139	-105.3579061	Corner
LCS-25	7N	71W	CO	21	40.55622554	-105.3636628	Corner
LCS-25	7N	71W	CO	21	40.55787199	-105.3637202	Corner
LCS-25	7N	71W	CO	21	40.55798784	-105.3579635	Corner
LCS-26	7N	71W	CO	21	40.55645724	-105.3521495	Corner
LCS-26	7N	71W	CO	21	40.55634139	-105.3579061	Corner
LCS-26	7N	71W	CO	21	40.55798784	-105.3579635	Corner
LCS-26	7N	71W	CO	21	40.55810369	-105.3522069	Corner
LCS-27	7N	71W	CO	21	40.55657309	-105.3463928	Corner
LCS-27	7N	71W	CO	21	40.55645724	-105.3521495	Corner
LCS-27	7N	71W	CO	21	40.55810369	-105.3522069	Corner
LCS-27	7N	71W	CO	21	40.55821954	-105.3464502	Corner
LCS-28	7N	71W	CO	21	40.55668894	-105.3406361	Corner
LCS-28	7N	71W	CO	21	40.55657309	-105.3463928	Corner
LCS-28	7N	71W	CO	21	40.55821954	-105.3464502	Corner
LCS-28	7N	71W	CO	21	40.55833539	-105.3406935	Corner
LCS-29	7N	71W	CO	22	40.5568048	-105.3348795	Corner
LCS-29	7N	71W	CO	22	40.55668894	-105.3406361	Corner
LCS-29	7N	71W	CO	22	40.55833539	-105.3406935	Corner
LCS-29	7N	71W	CO	22	40.55845123	-105.3349369	Corner
LCS-30	7N	71W	CO	22	40.55692065	-105.3291228	Corner
LCS-30	7N	71W	CO	22	40.5568048	-105.3348795	Corner
LCS-30	7N	71W	CO	22	40.55845123	-105.3349369	Corner
LCS-30	7N	71W	CO	22	40.55856708	-105.3291802	Corner
LCS-31	7N	71W	CO	22	40.55527417	-105.3290654	Corner
LCS-31	7N	71W	CO	22	40.55515832	-105.3348221	Corner
LCS-31	7N	71W	CO	22	40.5568048	-105.3348795	Corner
LCS-31	7N	71W	CO	22	40.55692065	-105.3291228	Corner
LCS-32	7N	71W	CO	22	40.55515832	-105.3348221	Corner
LCS-32	7N	71W	CO	22	40.55504246	-105.3405787	Corner
LCS-32	7N	71W	CO	22	40.55668894	-105.3406361	Corner
LCS-32	7N	71W	CO	22	40.5568048	-105.3348795	Corner

ClaimName	Township	Range	State	Section	Lat_WGS84	Long_WGS84	PointType
LCS-33	7N	71W	CO	21	40.55504246	-105.3405787	Corner
LCS-33	7N	71W	CO	21	40.55492661	-105.3463354	Corner
LCS-33	7N	71W	CO	21	40.55657309	-105.3463928	Corner
LCS-33	7N	71W	CO	21	40.55668894	-105.3406361	Corner
LCS-34	7N	71W	CO	21	40.55492661	-105.3463354	Corner
LCS-34	7N	71W	CO	21	40.55481076	-105.3520921	Corner
LCS-34	7N	71W	CO	21	40.55645724	-105.3521495	Corner
LCS-34	7N	71W	CO	21	40.55657309	-105.3463928	Corner
LCS-35	7N	71W	CO	21	40.55481076	-105.3520921	Corner
LCS-35	7N	71W	CO	21	40.5546949	-105.3578487	Corner
LCS-35	7N	71W	CO	21	40.55634139	-105.3579061	Corner
LCS-35	7N	71W	CO	21	40.55645724	-105.3521495	Corner
LCS-36	7N	71W	CO	21	40.5546949	-105.3578487	Corner
LCS-36	7N	71W	CO	21	40.55457905	-105.3636054	Corner
LCS-36	7N	71W	CO	21	40.55622554	-105.3636628	Corner
LCS-36	7N	71W	CO	21	40.55634139	-105.3579061	Corner
LCS-37	7N	71W	CO	21	40.55304837	-105.3577913	Corner
LCS-37	7N	71W	CO	21	40.55293251	-105.363548	Corner
LCS-37	7N	71W	CO	21	40.55457905	-105.3636054	Corner
LCS-37	7N	71W	CO	21	40.5546949	-105.3578487	Corner
LCS-38	7N	71W	CO	21	40.55316423	-105.3520346	Corner
LCS-38	7N	71W	CO	21	40.55304837	-105.3577913	Corner
LCS-38	7N	71W	CO	21	40.5546949	-105.3578487	Corner
LCS-38	7N	71W	CO	21	40.55481076	-105.3520921	Corner
LCS-39	7N	71W	CO	21	40.55328008	-105.346278	Corner
LCS-39	7N	71W	CO	21	40.55316423	-105.3520346	Corner
LCS-39	7N	71W	CO	21	40.55481076	-105.3520921	Corner
LCS-39	7N	71W	CO	21	40.55492661	-105.3463354	Corner
LCS-40	7N	71W	CO	21	40.55339594	-105.3405213	Corner
LCS-40	7N	71W	CO	21	40.55328008	-105.346278	Corner
LCS-40	7N	71W	CO	21	40.55492661	-105.3463354	Corner
LCS-40	7N	71W	CO	21	40.55504246	-105.3405787	Corner
LCS-41	7N	71W	CO	22	40.5535118	-105.3347647	Corner
LCS-41	7N	71W	CO	22	40.55339594	-105.3405213	Corner
LCS-41	7N	71W	CO	22	40.55504246	-105.3405787	Corner
LCS-41	7N	71W	CO	22	40.55515832	-105.3348221	Corner
LCS-42	7N	71W	CO	22	40.55362765	-105.329008	Corner
LCS-42	7N	71W	CO	22	40.5535118	-105.3347647	Corner
LCS-42	7N	71W	CO	22	40.55515832	-105.3348221	Corner
LCS-42	7N	71W	CO	22	40.55527417	-105.3290654	Corner
LCS-43	7N	71W	CO	22	40.5519811	-105.3289506	Corner
LCS-43	7N	71W	CO	22	40.55186524	-105.3347073	Corner
LCS-43	7N	71W	CO	22	40.5535118	-105.3347647	Corner

ClaimName	Township	Range	State	Section	Lat_WGS84	Long_WGS84	PointType
LCS-43	7N	71W	CO	22	40.55362765	-105.329008	Corner
LCS-44	7N	71W	CO	22	40.55186524	-105.3347073	Corner
LCS-44	7N	71W	CO	22	40.55174938	-105.3404639	Corner
LCS-44	7N	71W	CO	22	40.55339594	-105.3405213	Corner
LCS-44	7N	71W	CO	22	40.5535118	-105.3347647	Corner
LCS-45	7N	71W	CO	21	40.55174938	-105.3404639	Corner
LCS-45	7N	71W	CO	21	40.55163352	-105.3462206	Corner
LCS-45	7N	71W	CO	21	40.55328008	-105.346278	Corner
LCS-45	7N	71W	CO	21	40.55339594	-105.3405213	Corner
LCS-46	7N	71W	CO	21	40.55163352	-105.3462206	Corner
LCS-46	7N	71W	CO	21	40.55151766	-105.3519773	Corner
LCS-46	7N	71W	CO	21	40.55316423	-105.3520346	Corner
LCS-46	7N	71W	CO	21	40.55328008	-105.346278	Corner
LCS-47	7N	71W	CO	21	40.55151766	-105.3519773	Corner
LCS-47	7N	71W	CO	21	40.5514018	-105.3577339	Corner
LCS-47	7N	71W	CO	21	40.55304837	-105.3577913	Corner
LCS-47	7N	71W	CO	21	40.55316423	-105.3520346	Corner
LCS-48	7N	71W	CO	21	40.5514018	-105.3577339	Corner
LCS-48	7N	71W	CO	21	40.55128594	-105.3634906	Corner
LCS-48	7N	71W	CO	21	40.55293251	-105.363548	Corner
LCS-48	7N	71W	CO	21	40.55304837	-105.3577913	Corner
LCS-49	7N	71W	CO	21	40.54975519	-105.3576765	Corner
LCS-49	7N	71W	CO	21	40.54963932	-105.3634332	Corner
LCS-49	7N	71W	CO	21	40.55128594	-105.3634906	Corner
LCS-49	7N	71W	CO	21	40.5514018	-105.3577339	Corner
LCS-50	7N	71W	CO	21	40.54987105	-105.3519199	Corner
LCS-50	7N	71W	CO	21	40.54975519	-105.3576765	Corner
LCS-50	7N	71W	CO	21	40.5514018	-105.3577339	Corner
LCS-50	7N	71W	CO	21	40.55151766	-105.3519773	Corner
LCS-51	7N	71W	CO	21	40.54998691	-105.3461632	Corner
LCS-51	7N	71W	CO	21	40.54987105	-105.3519199	Corner
LCS-51	7N	71W	CO	21	40.55151766	-105.3519773	Corner
LCS-51	7N	71W	CO	21	40.55163352	-105.3462206	Corner
LCS-52	7N	71W	CO	21	40.55010278	-105.3404065	Corner
LCS-52	7N	71W	CO	21	40.54998691	-105.3461632	Corner
LCS-52	7N	71W	CO	21	40.55163352	-105.3462206	Corner
LCS-52	7N	71W	CO	21	40.55174938	-105.3404639	Corner
LCS-53	7N	71W	CO	22	40.55021864	-105.3346499	Corner
LCS-53	7N	71W	CO	22	40.55010278	-105.3404065	Corner
LCS-53	7N	71W	CO	22	40.55174938	-105.3404639	Corner
LCS-53	7N	71W	CO	22	40.55186524	-105.3347073	Corner
LCS-54	7N	71W	CO	22	40.5503345	-105.3288932	Corner
LCS-54	7N	71W	CO	22	40.55021864	-105.3346499	Corner

ClaimName	Township	Range	State	Section	Lat_WGS84	Long_WGS84	PointType
LCS-54	7N	71W	CO	22	40.55186524	-105.3347073	Corner
LCS-54	7N	71W	CO	22	40.5519811	-105.3289506	Corner
LCS-55	7N	71W	CO	27	40.54868786	-105.3288358	Corner
LCS-55	7N	71W	CO	27	40.548572	-105.3345925	Corner
LCS-55	7N	71W	CO	27	40.55021864	-105.3346499	Corner
LCS-55	7N	71W	CO	27	40.5503345	-105.3288932	Corner
LCS-56	7N	71W	CO	27	40.548572	-105.3345925	Corner
LCS-56	7N	71W	CO	27	40.54845613	-105.3403491	Corner
LCS-56	7N	71W	CO	27	40.55010278	-105.3404065	Corner
LCS-56	7N	71W	CO	27	40.55021864	-105.3346499	Corner
LCS-57	7N	71W	CO	27	40.54845613	-105.3403491	Corner
LCS-57	7N	71W	CO	27	40.54834027	-105.3461058	Corner
LCS-57	7N	71W	CO	27	40.54998691	-105.3461632	Corner
LCS-57	7N	71W	CO	27	40.55010278	-105.3404065	Corner
LCS-58	7N	71W	CO	28	40.54834027	-105.3461058	Corner
LCS-58	7N	71W	CO	28	40.5482244	-105.3518624	Corner
LCS-58	7N	71W	CO	28	40.54987105	-105.3519199	Corner
LCS-58	7N	71W	CO	28	40.54998691	-105.3461632	Corner
LCS-59	7N	71W	CO	28	40.5482244	-105.3518624	Corner
LCS-59	7N	71W	CO	28	40.54810854	-105.3576191	Corner
LCS-59	7N	71W	CO	28	40.54975519	-105.3576765	Corner
LCS-59	7N	71W	CO	28	40.54987105	-105.3519199	Corner
LCS-60	7N	71W	CO	28	40.54810854	-105.3576191	Corner
LCS-60	7N	71W	CO	28	40.54799267	-105.3633758	Corner
LCS-60	7N	71W	CO	28	40.54963932	-105.3634332	Corner
LCS-60	7N	71W	CO	28	40.54975519	-105.3576765	Corner
LCS-61	7N	71W	CO	29	40.54799267	-105.3633758	Corner
LCS-61	7N	71W	CO	29	40.5478768	-105.3691324	Corner
LCS-61	7N	71W	CO	29	40.54952346	-105.3691898	Corner
LCS-61	7N	71W	CO	29	40.54963932	-105.3634332	Corner
LCS-62	7N	71W	CO	29	40.5478768	-105.3691324	Corner
LCS-62	7N	71W	CO	29	40.54776094	-105.3748891	Corner
LCS-62	7N	71W	CO	29	40.5494076	-105.3749465	Corner
LCS-62	7N	71W	CO	29	40.54952346	-105.3691898	Corner
LCS-63	7N	71W	CO	29	40.54776094	-105.3748891	Corner
LCS-63	7N	71W	CO	29	40.54764507	-105.3806457	Corner
LCS-63	7N	71W	CO	29	40.54929174	-105.3807031	Corner
LCS-63	7N	71W	CO	29	40.5494076	-105.3749465	Corner
LCS-64	7N	71W	CO	29	40.54611424	-105.3748317	Corner
LCS-64	7N	71W	CO	29	40.54599837	-105.3805883	Corner
LCS-64	7N	71W	CO	29	40.54764507	-105.3806457	Corner
LCS-64	7N	71W	CO	29	40.54776094	-105.3748891	Corner
LCS-65	7N	71W	CO	29	40.54623011	-105.369075	Corner

ClaimName	Township	Range	State	Section	Lat_WGS84	Long_WGS84	PointType
LCS-65	7N	71W	CO	29	40.54611424	-105.3748317	Corner
LCS-65	7N	71W	CO	29	40.54776094	-105.3748891	Corner
LCS-65	7N	71W	CO	29	40.5478768	-105.3691324	Corner
LCS-66	7N	71W	CO	29	40.54634597	-105.3633184	Corner
LCS-66	7N	71W	CO	29	40.54623011	-105.369075	Corner
LCS-66	7N	71W	CO	29	40.5478768	-105.3691324	Corner
LCS-66	7N	71W	CO	29	40.54799267	-105.3633758	Corner
LCS-67	7N	71W	CO	28	40.54646184	-105.3575617	Corner
LCS-67	7N	71W	CO	28	40.54634597	-105.3633184	Corner
LCS-67	7N	71W	CO	28	40.54799267	-105.3633758	Corner
LCS-67	7N	71W	CO	28	40.54810854	-105.3576191	Corner
LCS-68	7N	71W	CO	28	40.54657771	-105.351805	Corner
LCS-68	7N	71W	CO	28	40.54646184	-105.3575617	Corner
LCS-68	7N	71W	CO	28	40.54810854	-105.3576191	Corner
LCS-68	7N	71W	CO	28	40.5482244	-105.3518624	Corner
LCS-69	7N	71W	CO	28	40.54669358	-105.3460484	Corner
LCS-69	7N	71W	CO	28	40.54657771	-105.351805	Corner
LCS-69	7N	71W	CO	28	40.5482244	-105.3518624	Corner
LCS-69	7N	71W	CO	28	40.54834027	-105.3461058	Corner
LCS-70	7N	71W	CO	27	40.54680945	-105.3402917	Corner
LCS-70	7N	71W	CO	27	40.54669358	-105.3460484	Corner
LCS-70	7N	71W	CO	27	40.54834027	-105.3461058	Corner
LCS-70	7N	71W	CO	27	40.54845613	-105.3403491	Corner
LCS-71	7N	71W	CO	27	40.54692531	-105.3345351	Corner
LCS-71	7N	71W	CO	27	40.54680945	-105.3402917	Corner
LCS-71	7N	71W	CO	27	40.54845613	-105.3403491	Corner
LCS-71	7N	71W	CO	27	40.548572	-105.3345925	Corner
LCS-72	7N	71W	CO	27	40.54704118	-105.3287784	Corner
LCS-72	7N	71W	CO	27	40.54692531	-105.3345351	Corner
LCS-72	7N	71W	CO	27	40.548572	-105.3345925	Corner
LCS-72	7N	71W	CO	27	40.54868786	-105.3288358	Corner
LCS-73	7N	71W	CO	27	40.54539446	-105.328721	Corner
LCS-73	7N	71W	CO	27	40.54527859	-105.3344777	Corner
LCS-73	7N	71W	CO	27	40.54692531	-105.3345351	Corner
LCS-73	7N	71W	CO	27	40.54704118	-105.3287784	Corner
LCS-74	7N	71W	CO	27	40.54527859	-105.3344777	Corner
LCS-74	7N	71W	CO	27	40.54516272	-105.3402343	Corner
LCS-74	7N	71W	CO	27	40.54680945	-105.3402917	Corner
LCS-74	7N	71W	CO	27	40.54692531	-105.3345351	Corner
LCS-75	7N	71W	CO	27	40.54516272	-105.3402343	Corner
LCS-75	7N	71W	CO	27	40.54504685	-105.345991	Corner
LCS-75	7N	71W	CO	27	40.54669358	-105.3460484	Corner
LCS-75	7N	71W	CO	27	40.54680945	-105.3402917	Corner

ClaimName	Township	Range	State	Section	Lat_WGS84	Long_WGS84	PointType
LCS-76	7N	71W	CO	28	40.54504685	-105.345991	Corner
LCS-76	7N	71W	CO	28	40.54493098	-105.3517476	Corner
LCS-76	7N	71W	CO	28	40.54657771	-105.351805	Corner
LCS-76	7N	71W	CO	28	40.54669358	-105.3460484	Corner
LCS-77	7N	71W	CO	28	40.54493098	-105.3517476	Corner
LCS-77	7N	71W	CO	28	40.54481511	-105.3575043	Corner
LCS-77	7N	71W	CO	28	40.54646184	-105.3575617	Corner
LCS-77	7N	71W	CO	28	40.54657771	-105.351805	Corner
LCS-78	7N	71W	CO	28	40.54481511	-105.3575043	Corner
LCS-78	7N	71W	CO	28	40.54469924	-105.363261	Corner
LCS-78	7N	71W	CO	28	40.54634597	-105.3633184	Corner
LCS-78	7N	71W	CO	28	40.54646184	-105.3575617	Corner
LCS-79	7N	71W	CO	29	40.54469924	-105.363261	Corner
LCS-79	7N	71W	CO	29	40.54458337	-105.3690176	Corner
LCS-79	7N	71W	CO	29	40.54623011	-105.369075	Corner
LCS-79	7N	71W	CO	29	40.54634597	-105.3633184	Corner
LCS-80	7N	71W	CO	29	40.54458337	-105.3690176	Corner
LCS-80	7N	71W	CO	29	40.54446749	-105.3747743	Corner
LCS-80	7N	71W	CO	29	40.54611424	-105.3748317	Corner
LCS-80	7N	71W	CO	29	40.54623011	-105.369075	Corner
LCS-81	7N	71W	CO	29	40.54446749	-105.3747743	Corner
LCS-81	7N	71W	CO	29	40.54435162	-105.3805309	Corner
LCS-81	7N	71W	CO	29	40.54599837	-105.3805883	Corner
LCS-81	7N	71W	CO	29	40.54611424	-105.3748317	Corner
LCS-82	7N	71W	CO	29	40.54282071	-105.3747169	Corner
LCS-82	7N	71W	CO	29	40.54270484	-105.3804735	Corner
LCS-82	7N	71W	CO	29	40.54435162	-105.3805309	Corner
LCS-82	7N	71W	CO	29	40.54446749	-105.3747743	Corner
LCS-83	7N	71W	CO	29	40.54293659	-105.3689602	Corner
LCS-83	7N	71W	CO	29	40.54282071	-105.3747169	Corner
LCS-83	7N	71W	CO	29	40.54446749	-105.3747743	Corner
LCS-83	7N	71W	CO	29	40.54458337	-105.3690176	Corner
LCS-84	7N	71W	CO	29	40.54305246	-105.3632036	Corner
LCS-84	7N	71W	CO	29	40.54293659	-105.3689602	Corner
LCS-84	7N	71W	CO	29	40.54458337	-105.3690176	Corner
LCS-84	7N	71W	CO	29	40.54469924	-105.363261	Corner
LCS-85	7N	71W	CO	28	40.54316834	-105.3574469	Corner
LCS-85	7N	71W	CO	28	40.54305246	-105.3632036	Corner
LCS-85	7N	71W	CO	28	40.54469924	-105.363261	Corner
LCS-85	7N	71W	CO	28	40.54481511	-105.3575043	Corner
LCS-86	7N	71W	CO	28	40.54328421	-105.3516903	Corner
LCS-86	7N	71W	CO	28	40.54316834	-105.3574469	Corner
LCS-86	7N	71W	CO	28	40.54481511	-105.3575043	Corner

ClaimName	Township	Range	State	Section	Lat_WGS84	Long_WGS84	PointType
LCS-86	7N	71W	CO	28	40.54493098	-105.3517476	Corner
LCS-87	7N	71W	CO	28	40.54340008	-105.3459336	Corner
LCS-87	7N	71W	CO	28	40.54328421	-105.3516903	Corner
LCS-87	7N	71W	CO	28	40.54493098	-105.3517476	Corner
LCS-87	7N	71W	CO	28	40.54504685	-105.345991	Corner
LCS-88	7N	71W	CO	27	40.54351596	-105.3401769	Corner
LCS-88	7N	71W	CO	27	40.54340008	-105.3459336	Corner
LCS-88	7N	71W	CO	27	40.54504685	-105.345991	Corner
LCS-88	7N	71W	CO	27	40.54516272	-105.3402343	Corner
LCS-89	7N	71W	CO	27	40.54363183	-105.3344203	Corner
LCS-89	7N	71W	CO	27	40.54351596	-105.3401769	Corner
LCS-89	7N	71W	CO	27	40.54516272	-105.3402343	Corner
LCS-89	7N	71W	CO	27	40.54527859	-105.3344777	Corner
LCS-90	7N	71W	CO	27	40.5437477	-105.3286636	Corner
LCS-90	7N	71W	CO	27	40.54363183	-105.3344203	Corner
LCS-90	7N	71W	CO	27	40.54527859	-105.3344777	Corner
LCS-90	7N	71W	CO	27	40.54539446	-105.328721	Corner
LCS-91	7N	71W	CO	28	40.5416374	-105.3516328	Corner
LCS-91	7N	71W	CO	28	40.54152152	-105.3573895	Corner
LCS-91	7N	71W	CO	28	40.54316834	-105.3574469	Corner
LCS-91	7N	71W	CO	28	40.54328421	-105.3516903	Corner
LCS-92	7N	71W	CO	28	40.54152152	-105.3573895	Corner
LCS-92	7N	71W	CO	28	40.54140564	-105.3631462	Corner
LCS-92	7N	71W	CO	28	40.54305246	-105.3632036	Corner
LCS-92	7N	71W	CO	28	40.54316834	-105.3574469	Corner
LCS-93	7N	71W	CO	29	40.54140564	-105.3631462	Corner
LCS-93	7N	71W	CO	29	40.54128977	-105.3689028	Corner
LCS-93	7N	71W	CO	29	40.54293659	-105.3689602	Corner
LCS-93	7N	71W	CO	29	40.54305246	-105.3632036	Corner
LCS-94	7N	71W	CO	29	40.54128977	-105.3689028	Corner
LCS-94	7N	71W	CO	29	40.54117389	-105.3746595	Corner
LCS-94	7N	71W	CO	29	40.54282071	-105.3747169	Corner
LCS-94	7N	71W	CO	29	40.54293659	-105.3689602	Corner
LCS-95	7N	71W	CO	29	40.54117389	-105.3746595	Corner
LCS-95	7N	71W	CO	29	40.54105801	-105.3804161	Corner
LCS-95	7N	71W	CO	29	40.54270484	-105.3804735	Corner
LCS-95	7N	71W	CO	29	40.54282071	-105.3747169	Corner
LCS-96	7N	71W	CO	29	40.53952703	-105.3746021	Corner
LCS-96	7N	71W	CO	29	40.53941115	-105.3803587	Corner
LCS-96	7N	71W	CO	29	40.54105801	-105.3804161	Corner
LCS-96	7N	71W	CO	29	40.54117389	-105.3746595	Corner
LCS-97	7N	71W	CO	29	40.53964291	-105.3688454	Corner
LCS-97	7N	71W	CO	29	40.53952703	-105.3746021	Corner

ClaimName	Township	Range	State	Section	Lat_WGS84	Long_WGS84	PointType
LCS-97	7N	71W	CO	29	40.54117389	-105.3746595	Corner
LCS-97	7N	71W	CO	29	40.54128977	-105.3689028	Corner
LCS-98	7N	71W	CO	29	40.53975879	-105.3630888	Corner
LCS-98	7N	71W	CO	29	40.53964291	-105.3688454	Corner
LCS-98	7N	71W	CO	29	40.54128977	-105.3689028	Corner
LCS-98	7N	71W	CO	29	40.54140564	-105.3631462	Corner
LCS-99	7N	71W	CO	28	40.53987467	-105.3573321	Corner
LCS-99	7N	71W	CO	28	40.53975879	-105.3630888	Corner
LCS-99	7N	71W	CO	28	40.54140564	-105.3631462	Corner
LCS-99	7N	71W	CO	28	40.54152152	-105.3573895	Corner
LCS-100	7N	71W	CO	28	40.53999055	-105.3515754	Corner
LCS-100	7N	71W	CO	28	40.53987467	-105.3573321	Corner
LCS-100	7N	71W	CO	28	40.54152152	-105.3573895	Corner
LCS-100	7N	71W	CO	28	40.5416374	-105.3516328	Corner
LCS-101	7N	71W	CO	28	40.53834365	-105.351518	Corner
LCS-101	7N	71W	CO	28	40.53822777	-105.3572747	Corner
LCS-101	7N	71W	CO	28	40.53987467	-105.3573321	Corner
LCS-101	7N	71W	CO	28	40.53999055	-105.3515754	Corner
LCS-102	7N	71W	CO	28	40.53822777	-105.3572747	Corner
LCS-102	7N	71W	CO	28	40.53811189	-105.3630314	Corner
LCS-102	7N	71W	CO	28	40.53975879	-105.3630888	Corner
LCS-102	7N	71W	CO	28	40.53987467	-105.3573321	Corner
LCS-103	7N	71W	CO	29	40.53811189	-105.3630314	Corner
LCS-103	7N	71W	CO	29	40.53799601	-105.368788	Corner
LCS-103	7N	71W	CO	29	40.53964291	-105.3688454	Corner
LCS-103	7N	71W	CO	29	40.53975879	-105.3630888	Corner
LCS-104	7N	71W	CO	29	40.53799601	-105.368788	Corner
LCS-104	7N	71W	CO	29	40.53788012	-105.3745447	Corner
LCS-104	7N	71W	CO	29	40.53952703	-105.3746021	Corner
LCS-104	7N	71W	CO	29	40.53964291	-105.3688454	Corner
LCS-105	7N	71W	CO	29	40.53788012	-105.3745447	Corner
LCS-105	7N	71W	CO	29	40.53776424	-105.3803013	Corner
LCS-105	7N	71W	CO	29	40.53941115	-105.3803587	Corner
LCS-105	7N	71W	CO	29	40.53952703	-105.3746021	Corner
LCS-106	7N	71W	CO	29	40.53623318	-105.3744873	Corner
LCS-106	7N	71W	CO	29	40.53611729	-105.3802439	Corner
LCS-106	7N	71W	CO	29	40.53776424	-105.3803013	Corner
LCS-106	7N	71W	CO	29	40.53788012	-105.3745447	Corner
LCS-107	7N	71W	CO	29	40.53634906	-105.3687306	Corner
LCS-107	7N	71W	CO	29	40.53623318	-105.3744873	Corner
LCS-107	7N	71W	CO	29	40.53788012	-105.3745447	Corner
LCS-107	7N	71W	CO	29	40.53799601	-105.368788	Corner
LCS-108	7N	71W	CO	29	40.53646495	-105.362974	Corner

ClaimName	Township	Range	State	Section	Lat_WGS84	Long_WGS84	PointType
LCS-108	7N	71W	CO	29	40.53634906	-105.3687306	Corner
LCS-108	7N	71W	CO	29	40.53799601	-105.368788	Corner
LCS-108	7N	71W	CO	29	40.53811189	-105.3630314	Corner
LCS-109	7N	71W	CO	28	40.53658084	-105.3572173	Corner
LCS-109	7N	71W	CO	28	40.53646495	-105.362974	Corner
LCS-109	7N	71W	CO	28	40.53811189	-105.3630314	Corner
LCS-109	7N	71W	CO	28	40.53822777	-105.3572747	Corner
LCS-110	7N	71W	CO	28	40.53669672	-105.3514606	Corner
LCS-110	7N	71W	CO	28	40.53658084	-105.3572173	Corner
LCS-110	7N	71W	CO	28	40.53822777	-105.3572747	Corner
LCS-110	7N	71W	CO	28	40.53834365	-105.351518	Corner
LCS-111	7N	71W	CO	28	40.53504975	-105.3514032	Corner
LCS-111	7N	71W	CO	28	40.53493386	-105.3571599	Corner
LCS-111	7N	71W	CO	28	40.53658084	-105.3572173	Corner
LCS-111	7N	71W	CO	28	40.53669672	-105.3514606	Corner
LCS-112	7N	71W	CO	28	40.53493386	-105.3571599	Corner
LCS-112	7N	71W	CO	28	40.53481797	-105.3629165	Corner
LCS-112	7N	71W	CO	28	40.53646495	-105.362974	Corner
LCS-112	7N	71W	CO	28	40.53658084	-105.3572173	Corner
LCS-113	7N	71W	CO	29	40.53481797	-105.3629165	Corner
LCS-113	7N	71W	CO	29	40.53470208	-105.3686732	Corner
LCS-113	7N	71W	CO	29	40.53634906	-105.3687306	Corner
LCS-113	7N	71W	CO	29	40.53646495	-105.362974	Corner
LCS-114	7N	71W	CO	29	40.53470208	-105.3686732	Corner
LCS-114	7N	71W	CO	29	40.53458619	-105.3744299	Corner
LCS-114	7N	71W	CO	29	40.53623318	-105.3744873	Corner
LCS-114	7N	71W	CO	29	40.53634906	-105.3687306	Corner
LCS-115	7N	71W	CO	29	40.53458619	-105.3744299	Corner
LCS-115	7N	71W	CO	29	40.5344703	-105.3801865	Corner
LCS-115	7N	71W	CO	29	40.53611729	-105.3802439	Corner
LCS-115	7N	71W	CO	29	40.53623318	-105.3744873	Corner
LCS-116	7N	71W	CO	31	40.5324756	-105.3973991	Corner
LCS-116	7N	71W	CO	31	40.53235971	-105.4031558	Corner
LCS-116	7N	71W	CO	31	40.53400675	-105.4032132	Corner
LCS-116	7N	71W	CO	31	40.53412264	-105.3974565	Corner
LCS-117	7N	71W	CO	31	40.53259149	-105.3916424	Corner
LCS-117	7N	71W	CO	31	40.5324756	-105.3973991	Corner
LCS-117	7N	71W	CO	31	40.53412264	-105.3974565	Corner
LCS-117	7N	71W	CO	31	40.53423853	-105.3916998	Corner
LCS-118	7N	71W	CO	31	40.53270739	-105.3858858	Corner
LCS-118	7N	71W	CO	31	40.53259149	-105.3916424	Corner
LCS-118	7N	71W	CO	31	40.53423853	-105.3916998	Corner
LCS-118	7N	71W	CO	31	40.53435442	-105.3859432	Corner

ClaimName	Township	Range	State	Section	Lat_WGS84	Long_WGS84	PointType
LCS-119	7N	71W	CO	31	40.53282328	-105.3801291	Corner
LCS-119	7N	71W	CO	31	40.53270739	-105.3858858	Corner
LCS-119	7N	71W	CO	31	40.53435442	-105.3859432	Corner
LCS-119	7N	71W	CO	31	40.53447031	-105.3801865	Corner
LCS-120	7N	71W	CO	32	40.53293917	-105.3743725	Corner
LCS-120	7N	71W	CO	32	40.53282328	-105.3801291	Corner
LCS-120	7N	71W	CO	32	40.53447031	-105.3801865	Corner
LCS-120	7N	71W	CO	32	40.53458619	-105.3744299	Corner
LCS-121	7N	71W	CO	32	40.53305506	-105.3686158	Corner
LCS-121	7N	71W	CO	32	40.53293917	-105.3743725	Corner
LCS-121	7N	71W	CO	32	40.53458619	-105.3744299	Corner
LCS-121	7N	71W	CO	32	40.53470208	-105.3686732	Corner
LCS-122	7N	71W	CO	32	40.53317095	-105.3628592	Corner
LCS-122	7N	71W	CO	32	40.53305506	-105.3686158	Corner
LCS-122	7N	71W	CO	32	40.53470208	-105.3686732	Corner
LCS-122	7N	71W	CO	32	40.53481797	-105.3629165	Corner
LCS-123	7N	71W	CO	33	40.53328684	-105.3571025	Corner
LCS-123	7N	71W	CO	33	40.53317095	-105.3628592	Corner
LCS-123	7N	71W	CO	33	40.53481797	-105.3629165	Corner
LCS-123	7N	71W	CO	33	40.53493386	-105.3571599	Corner
LCS-124	7N	71W	CO	33	40.53340273	-105.3513458	Corner
LCS-124	7N	71W	CO	33	40.53328684	-105.3571025	Corner
LCS-124	7N	71W	CO	33	40.53493386	-105.3571599	Corner
LCS-124	7N	71W	CO	33	40.53504975	-105.3514032	Corner
LCS-125	7N	71W	CO	33	40.53175568	-105.3512884	Corner
LCS-125	7N	71W	CO	33	40.53163979	-105.3570451	Corner
LCS-125	7N	71W	CO	33	40.53328684	-105.3571025	Corner
LCS-125	7N	71W	CO	33	40.53340273	-105.3513458	Corner
LCS-126	7N	71W	CO	33	40.53163979	-105.3570451	Corner
LCS-126	7N	71W	CO	33	40.53152389	-105.3628018	Corner
LCS-126	7N	71W	CO	33	40.53317095	-105.3628592	Corner
LCS-126	7N	71W	CO	33	40.53328684	-105.3571025	Corner
LCS-127	7N	71W	CO	32	40.53152389	-105.3628018	Corner
LCS-127	7N	71W	CO	32	40.531408	-105.3685584	Corner
LCS-127	7N	71W	CO	32	40.53305506	-105.3686158	Corner
LCS-127	7N	71W	CO	32	40.53317095	-105.3628592	Corner
LCS-128	7N	71W	CO	32	40.531408	-105.3685584	Corner
LCS-128	7N	71W	CO	32	40.5312921	-105.3743151	Corner
LCS-128	7N	71W	CO	32	40.53293917	-105.3743725	Corner
LCS-128	7N	71W	CO	32	40.53305506	-105.3686158	Corner
LCS-129	7N	71W	CO	32	40.5312921	-105.3743151	Corner
LCS-129	7N	71W	CO	32	40.53117621	-105.3800717	Corner
LCS-129	7N	71W	CO	32	40.53282328	-105.3801291	Corner

ClaimName	Township	Range	State	Section	Lat_WGS84	Long_WGS84	PointType
LCS-129	7N	71W	CO	32	40.53293917	-105.3743725	Corner
LCS-130	7N	71W	CO	31	40.53117621	-105.3800717	Corner
LCS-130	7N	71W	CO	31	40.53106031	-105.3858284	Corner
LCS-130	7N	71W	CO	31	40.53270739	-105.3858858	Corner
LCS-130	7N	71W	CO	31	40.53282328	-105.3801291	Corner
LCS-131	7N	71W	CO	31	40.53106031	-105.3858284	Corner
LCS-131	7N	71W	CO	31	40.53094442	-105.391585	Corner
LCS-131	7N	71W	CO	31	40.53259149	-105.3916424	Corner
LCS-131	7N	71W	CO	31	40.53270739	-105.3858858	Corner
LCS-132	7N	71W	CO	31	40.53094442	-105.391585	Corner
LCS-132	7N	71W	CO	31	40.53082852	-105.3973417	Corner
LCS-132	7N	71W	CO	31	40.5324756	-105.3973991	Corner
LCS-132	7N	71W	CO	31	40.53259149	-105.3916424	Corner
LCS-133	7N	71W	CO	31	40.53082852	-105.3973417	Corner
LCS-133	7N	71W	CO	31	40.53071263	-105.4030984	Corner
LCS-133	7N	71W	CO	31	40.53235971	-105.4031558	Corner
LCS-133	7N	71W	CO	31	40.5324756	-105.3973991	Corner
LCS-134	7N	71W	CO	31	40.52918141	-105.3972843	Corner
LCS-134	7N	71W	CO	31	40.52906551	-105.403041	Corner
LCS-134	7N	71W	CO	31	40.53071263	-105.4030984	Corner
LCS-134	7N	71W	CO	31	40.53082852	-105.3973417	Corner
LCS-135	7N	71W	CO	31	40.5292973	-105.3915276	Corner
LCS-135	7N	71W	CO	31	40.52918141	-105.3972843	Corner
LCS-135	7N	71W	CO	31	40.53082852	-105.3973417	Corner
LCS-135	7N	71W	CO	31	40.53094442	-105.391585	Corner
LCS-136	7N	71W	CO	31	40.5294132	-105.385771	Corner
LCS-136	7N	71W	CO	31	40.5292973	-105.3915276	Corner
LCS-136	7N	71W	CO	31	40.53094442	-105.391585	Corner
LCS-136	7N	71W	CO	31	40.53106031	-105.3858284	Corner
LCS-137	7N	71W	CO	31	40.5295291	-105.3800143	Corner
LCS-137	7N	71W	CO	31	40.5294132	-105.385771	Corner
LCS-137	7N	71W	CO	31	40.53106031	-105.3858284	Corner
LCS-137	7N	71W	CO	31	40.53117621	-105.3800717	Corner
LCS-138	7N	71W	CO	32	40.529645	-105.3742577	Corner
LCS-138	7N	71W	CO	32	40.5295291	-105.3800143	Corner
LCS-138	7N	71W	CO	32	40.53117621	-105.3800717	Corner
LCS-138	7N	71W	CO	32	40.5312921	-105.3743151	Corner
LCS-139	7N	71W	CO	32	40.52976089	-105.368501	Corner
LCS-139	7N	71W	CO	32	40.529645	-105.3742577	Corner
LCS-139	7N	71W	CO	32	40.5312921	-105.3743151	Corner
LCS-139	7N	71W	CO	32	40.531408	-105.3685584	Corner
LCS-140	7N	71W	CO	32	40.52811375	-105.3684436	Corner
LCS-140	7N	71W	CO	32	40.52799785	-105.3742003	Corner

ClaimName	Township	Range	State	Section	Lat_WGS84	Long_WGS84	PointType
LCS-140	7N	71W	CO	32	40.529645	-105.3742577	Corner
LCS-140	7N	71W	CO	32	40.52976089	-105.368501	Corner
LCS-141	7N	71W	CO	32	40.52799785	-105.3742003	Corner
LCS-141	7N	71W	CO	32	40.52788195	-105.3799569	Corner
LCS-141	7N	71W	CO	32	40.5295291	-105.3800143	Corner
LCS-141	7N	71W	CO	32	40.529645	-105.3742577	Corner
LCS-142	7N	71W	CO	31	40.52788195	-105.3799569	Corner
LCS-142	7N	71W	CO	31	40.52776605	-105.3857136	Corner
LCS-142	7N	71W	CO	31	40.5294132	-105.385771	Corner
LCS-142	7N	71W	CO	31	40.5295291	-105.3800143	Corner
LCS-143	7N	71W	CO	31	40.52776605	-105.3857136	Corner
LCS-143	7N	71W	CO	31	40.52765015	-105.3914702	Corner
LCS-143	7N	71W	CO	31	40.5292973	-105.3915276	Corner
LCS-143	7N	71W	CO	31	40.5294132	-105.385771	Corner
LCS-144	7N	71W	CO	31	40.52765015	-105.3914702	Corner
LCS-144	7N	71W	CO	31	40.52753425	-105.3972269	Corner
LCS-144	7N	71W	CO	31	40.52918141	-105.3972843	Corner
LCS-144	7N	71W	CO	31	40.5292973	-105.3915276	Corner
LCS-145	7N	71W	CO	31	40.52753425	-105.3972269	Corner
LCS-145	7N	71W	CO	31	40.52741835	-105.4029836	Corner
LCS-145	7N	71W	CO	31	40.52906551	-105.403041	Corner
LCS-145	7N	71W	CO	31	40.52918141	-105.3972843	Corner
LCS-148	6N	72W	CO	1	40.51799962	-105.4171565	Corner
LCS-148	6N	72W	CO	1	40.51797002	-105.4225515	Corner
LCS-148	6N	72W	CO	1	40.51961685	-105.4225671	Corner
LCS-148	6N	72W	CO	1	40.51964645	-105.4171721	Corner
LCS-147	6N	72W	CO	1	40.51802922	-105.4117616	Corner
LCS-147	6N	72W	CO	1	40.51799962	-105.4171565	Corner
LCS-147	6N	72W	CO	1	40.51964645	-105.4171721	Corner
LCS-147	6N	72W	CO	1	40.51967605	-105.4117772	Corner
LCS-146	6N	72W	CO	1	40.51805882	-105.4063666	Corner
LCS-146	6N	72W	CO	1	40.51802922	-105.4117616	Corner
LCS-146	6N	72W	CO	1	40.51967605	-105.4117772	Corner
LCS-146	6N	72W	CO	1	40.51970564	-105.4063823	Corner
LCS-149	6N	72W	CO	1	40.51635275	-105.4171409	Corner
LCS-149	6N	72W	CO	1	40.51632315	-105.4225358	Corner
LCS-149	6N	72W	CO	1	40.51797002	-105.4225515	Corner
LCS-149	6N	72W	CO	1	40.51799962	-105.4171565	Corner
LCS-150	6N	72W	CO	1	40.51638235	-105.4117459	Corner
LCS-150	6N	72W	CO	1	40.51635275	-105.4171409	Corner
LCS-150	6N	72W	CO	1	40.51799962	-105.4171565	Corner
LCS-150	6N	72W	CO	1	40.51802922	-105.4117616	Corner
LCS-151	6N	72W	CO	1	40.51641195	-105.406351	Corner

ClaimName	Township	Range	State	Section	Lat_WGS84	Long_WGS84	PointType
LCS-151	6N	72W	CO	1	40.51638235	-105.4117459	Corner
LCS-151	6N	72W	CO	1	40.51802922	-105.4117616	Corner
LCS-151	6N	72W	CO	1	40.51805882	-105.4063666	Corner