

## ARDIDEN QUARTERLY ACTIVITIES REPORT – QUARTER ENDING 30 SEPTEMBER 2023

### HIGHLIGHTS

- ✓ **Project review:** Current focus is on reviewing historical and recent results to understand the controls over the Western Hub, specifically the Dorothy, Dobbie, Tonsil and Esker prospects, surrounding Barrick's past producing Golden Patricia mine.
- ✓ **Cost review:** The Company is undertaking a thorough review of all corporate and exploration costs to reduce the overhead burden whilst the exploration strategy is reviewed.
- ✓ **Board changes:** Bruce McFadzean resigned his position as a Non-Executive Chair, with Michelle Roth assuming the position as Non-Executive Chair on 21 August 2023. At the same time Jeremy Robinson and Matthew Freedman were appointed as Non-executive Directors of the Company.
- ✓ **Final assays continue to build the story of the Western Hub,** including confirmation of mineralisation in a new area known as the West Zone, with best results as follows:

#### Dorothy SE.

- DR-23-20      3.34m @ 3.22 g/t from 56.66m, within a broader envelope of 43.90m @ 0.40 g/t from 56.66m
- DR-23-21      3.05m @ 2.99 g/t from 64.00m within a broader envelope of 21.69m @ 0.46 g/t from 64.00m
- DR-23-12      3.00m @ 2.15 g/t from 52.00m within a broader envelope of 28.00m @ 0.38 g/t from 46.00m
- DR-23-19      2.65m @ 0.93 g/t from 260.60m within a broader envelope of 43.25m @ 0.25 g/t from 220.00m

#### West Zone

- DR-23-37      16.00m @ 0.91 g/t from 2.00m, and 20.67m @ 0.71 g/t from 23.00m within a broader envelope of 149.00m @ 0.31 g/t from 2.00m

- ✓ **Field mapping program undertaken:** The Company conducted a field campaign during the quarter targeting outcrop mapping and sampling, a soil sampling program and review of historical drill collar locations at the Dorothy and Dobbie prospects (Figure 1).
- ✓ **Comprehensive review of historical results:** Desktop work continues in order to gain a better understanding of the complexity of the various types of mineralisation within the historical context.



Figure 1 – L to R, Bayside geologist, and Ardiden's F Carrasqueiras and H Daxter visiting Pickle Lake

Ardiden Limited ('Ardiden' or 'the Company') (ASX: ADV) is pleased to report on its Quarterly Activities at its highly prospective 100% owned Pickle Lake Gold Project in northwest Ontario, Canada (Figure 2).



Figure 2 – Location of Ardiden's Pickle Lake Gold project within the Uchi Belt of northwest Ontario<sup>1</sup>.

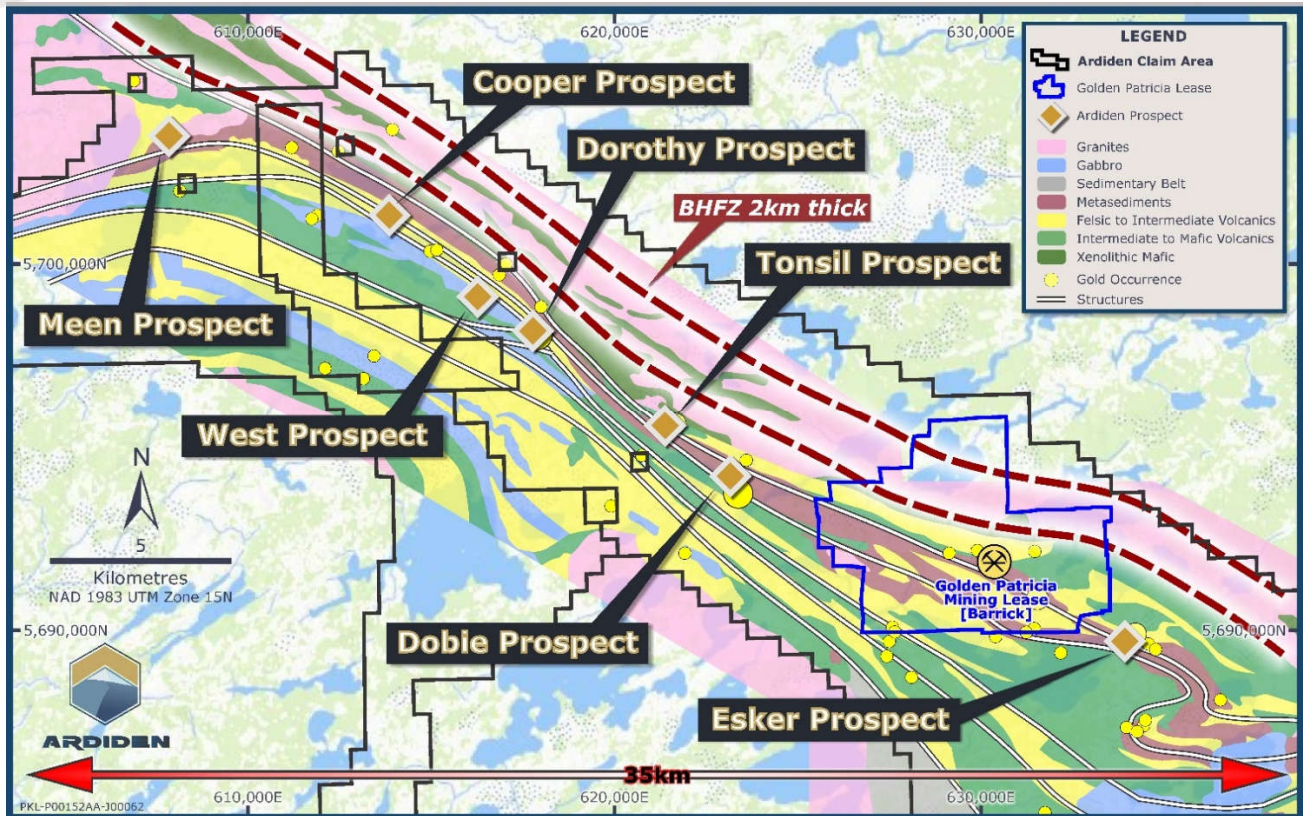
### **GOLD EXPLORATION ACTIVITIES – Dorothy Prospect (Western Hub) – 100% owned Pickle Lake Gold Project**

The Pickle Lake Gold Project is a continuous District-Scale landholding, located east of Red Lake in the well-endowed Uchi Geological sub-province of north-western Ontario, Canada. The Uchi Province is host to numerous currently producing gold mines at Red Lake and at Musselwhite, and is a highly active exploration area with Evolution, Newmont, Kinross, and others all actively pursuing gold exploration work in the area.

Results received during the quarter from drilling within the Western Hub confirm the Dorothy Dobie trend extends from the Esker Prospect through the historic Golden Patricia Mine which produced **619,796 oz Au @ 15.2 g/t Au<sup>2</sup>** between 1988-1997 travelling northwest (NW) towards and beyond the Company's West Prospect, spanning >35kms. (Figure 3)

<sup>1</sup> \* Source S&P Global Market Intelligence 2023

<sup>2</sup> Information in relation to historical gold production at the Pickle Lake Gold Camp, and Golden Patricia Mine in Figures and notes above have been referenced from three sources of publication, namely: 1. Harron, G. A. 2009. Technical Report on Three Gold Exploration Properties Pickle Lake Area, Ontario, Canada. G.A. Harron, P.Eng., G.A. Harron & Associates Inc.



**Figure 3 – Ardiden’s Western Hub which includes the Dorothy Dobie Prospects, Esker, Cooper, Meen, Tonsil, West which are along strike to the past producing Golden Patricia Mine.**

The 34-hole diamond drill program totaled 5,473m, and was designed to test the extent of the mineralisation halo, along with the affinity to the presumed iron formation related sulphide sequence identified in Ardiden’s 2022 drill program at both the Dorothy and Dobie prospects (Figure 3). The results received during the quarter, have increased the strike length of the highly prospective zone at Dorothy, and confirmed gold mineralisation in a new area of testing at the West Prospect.

In addition to the broad mineralisation zone at Dorothy and West, the continuation of higher-grade intervals appears present within the Dorothy-Dobie Trend. Importantly, they are very shallow depths with all intersecting the zone at less than 75m from surface. The results reported below confirm higher-grade intervals within the broader mineralised zones of:

- DR-23-12 with 3.00m @ 2.15 g/t from 52.00m,
- DR-23-20 with 3.34m @ 3.22 g/t from 56.60m, and
- DR-23-21 with 3.05m @ 2.99 g/t from 64.00m.

The Dorothy Prospect currently displays a highly prospective zone with a strike length of 900m along the Dorothy-Dobie Trend. This prospective area includes the previously reported holes DR-23-04A through to DR-23-11 (ASX announcement 11/05/23) and DR-22-01 and DR-22-02 (ASX announcements 17/08/22 and 22/09/22). The trend appears to be SE-NW trending and dipping shallowly to the NW and the mineralisation within this zone remains open at depth. All results within the zone are at very shallow depths with all intersecting the zone at less than 75m from surface. The Company is also developing a greater understanding of the strike extension to link the Dorothy and West Prospects.

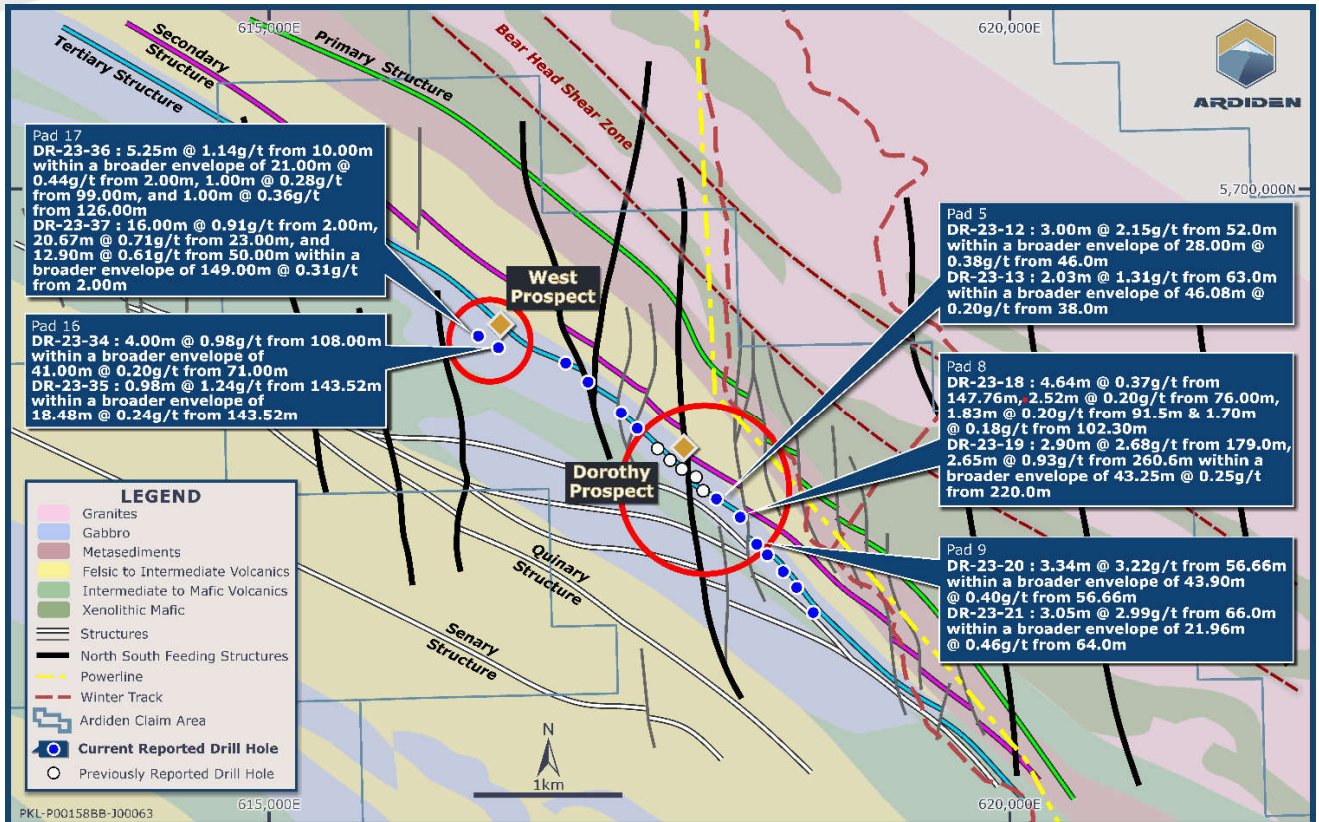


Figure 4 – Recent drilling over the Dorothy and West Prospect, results during quarter in blue (ASX 7 August 2023), historical results in white as announced by Ardiden (ADV) ASX: 17 August 2022, 26 September 2022, 11 May 2023, and 7 August 2023.

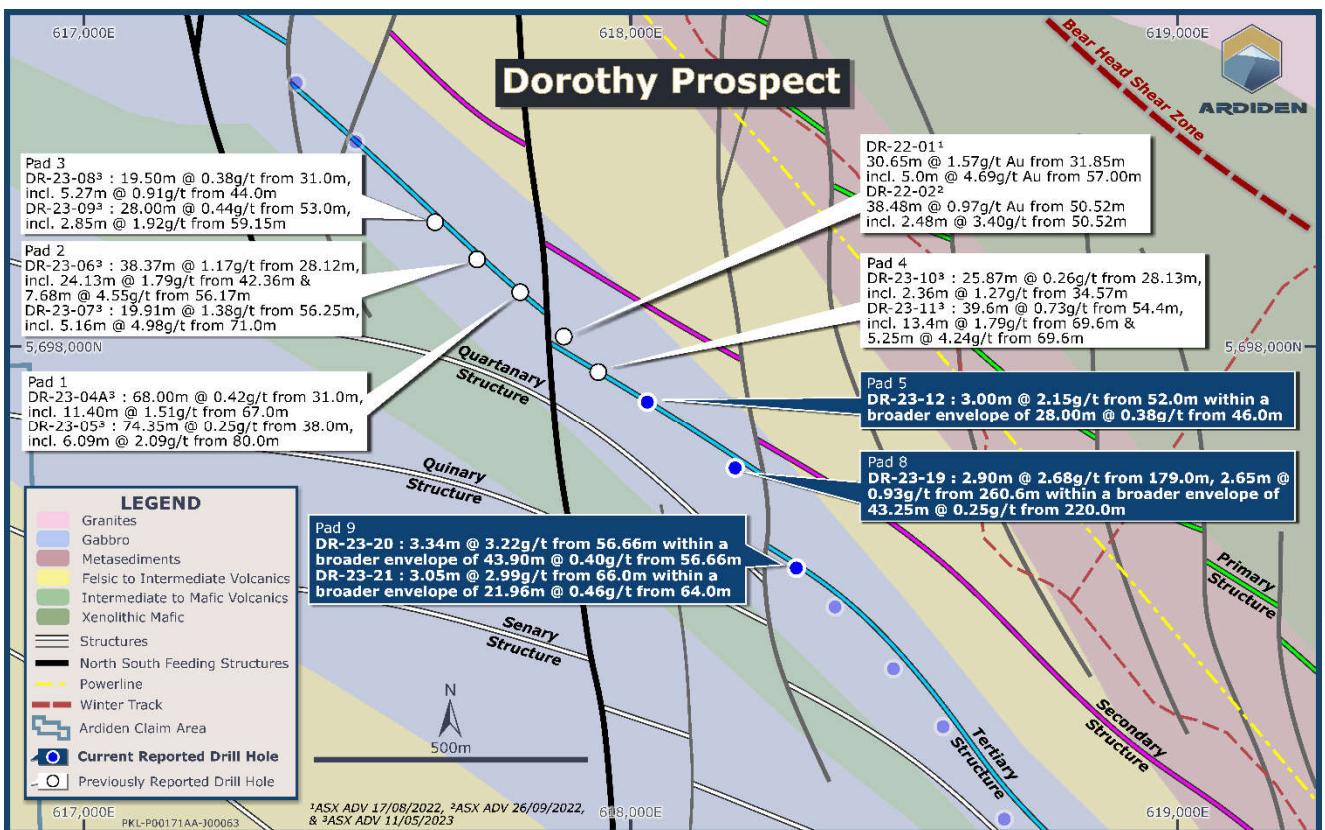
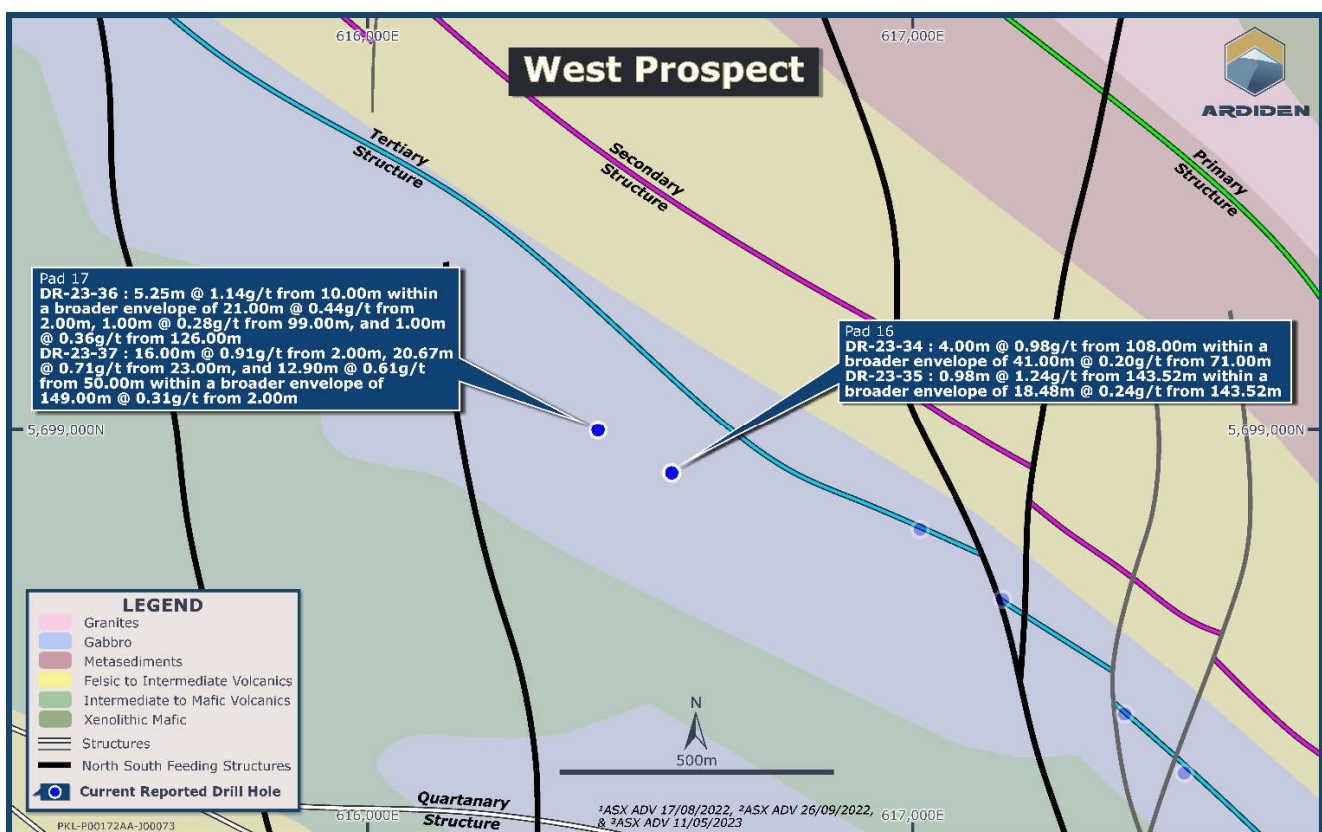


Figure 5 – Drill results highlighting the prospective 600m strike length at the SE Dorothy Zone

Drilling conducted beyond this prospective area at Dorothy displays lower grades of mineralisation along the Dorothy-Dobie Trend and extends for over 2km. Whilst this remains early stages at Dorothy and West, the presence of gold appears consistent in 31 of the 34 holes drilled in the current program. Holes DR-23-19 through to DR-23-21 are situated up to 400m to the SE of the prospective zone and displayed results that require further review and follow-up assessment with a broad mineralisation envelope of up to 43.90m @ 0.40 g/t (DR-23-21) that also appears consistent with a narrow higher-grade zone of 3.34m @ 3.20 g/t (Figure 5). The new holes to the SE of Dorothy extend the total strike length containing higher grade intercepts to circa 900m providing a very strong target at depth for further drill testing.

The four drill holes at the West Prospect (DR-23-34/DR-23-37) intercepted shallow mineralisation from surface. These holes were designed to test historical results completed at this prospect in 1988. Importantly, mineralisation commenced in DR-23-37 at 2m once traversing the overburden with mineralisation at the top of the hole before finishing at 152m with mineralisation continuing. Mineralisation appears unlike the drilling at Dorothy and was not conducive to the host diorite sequence but within a series of meta volcanics, altered basalts, and gabbro's. An increased presence of quartz feldspar porphyries were consistent at the West prospect that appear to be post mineralisation. The West Prospect, at approximately 1.6km NW of the Dorothy Prospect, is thought to be a mineralised splay off the Dorothy-Dobie Trend.



**Figure 6 - Drill results highlighting gold mineralisation at the newly tested West Zone**

Drill results with the most significant intercepts of the holes reported in in the quarter from Dorothy and West are provided in Table 1 at a 1.0m interval with 0.2g/t Au cut-off.

**Table 1 – Assay results with the most significant intercepts at the Dorothy and West Prospect at 0.2g/t Au cut-off.**

<b>DR-23-20</b>	3.34m @ 3.22 g/t from 56.66m, within a broader envelope of 43.90m @ 0.40 g/t from 56.66m
<b>DR-23-21</b>	3.05m @ 2.99 g/t from 64.00m within a broader envelope of 21.69m @ 0.46 g/t from 64.00m
<b>DR-23-12</b>	3.00m @ 2.15 g/t from 52.00m within a broader envelope of 28.00m @ 0.38 g/t from 46.00m

<b>DR-23-19</b>	2.65m @ 0.93 g/t from 260.60m within a broader envelope of 43.25m @ 0.25 g/t from 220.00m
<b>DR-23-37</b>	16.00m @ 0.91 g/t from 2.00m, and 20.67m @ 0.71 g/t from 23.00m within a broader envelope of 149.00m @ 0.31 g/t from 2.00m

## First Nations – ESG

### Technical Ecological Knowledge Study

The Technical Ecological Knowledge Study (TEK) has continued over the Western Hub during the period. Ardiden has a firm commitment with each First Nation community in developing a long-lasting relationship built on trust and respect. Conducting the TEK is one important piece of understanding the traditional knowledge and customs of our First Nation stakeholders.

CEO and Managing Director Greg Romain represented Ardiden at a meeting of the recently elected Chief of Mishkeegogamang Ojibway Nation and Chief Russell Wesley of Cat Lake First Nation held in Thunder Bay during September (Figure 7). Ardiden also met with the Ontario Minister of Mines George Pirie (Figure 8) at the Cen Can Expo in Thunder Bay.



*Figure 7 -Chief Merle Loon, Mishkeegogamang First Nation, Ardiden's Tony Marinaro and Greg Romain, with Chief Russell Wesley Cat Lake First Nation*



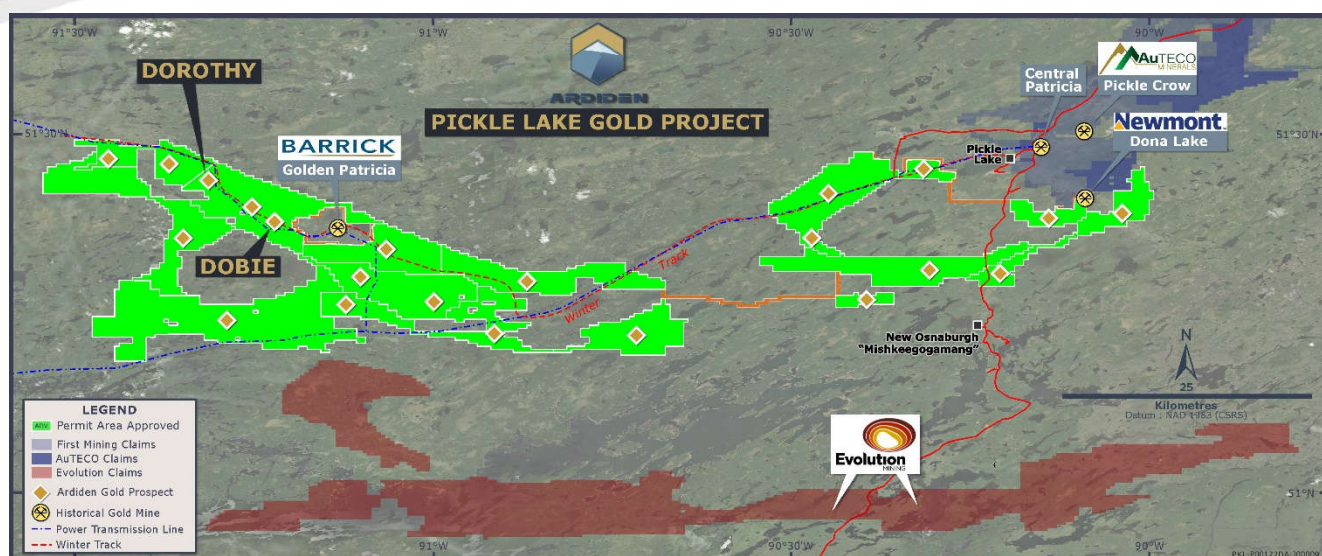
*Figure 8 -Ontario Minister for Mines, George Pirie, Ardiden's Greg Romain, with Jonathan Mamakwa*

## Permitting and Tenure

The Company remains substantially permitted (Figure 9) with two early exploration permit applications approved during the quarter covering those permits due to expire. In addition to the two early exploration permits being granted, the Company received an extension for its winter road access permit into the Kasagiminnis Deposit.

*Table 2 – Mines Department Granted Early Exploration Permits (PLGP)*

<i>Permit #</i>	<i>Prospect</i>	<i>FN Communities</i>
<i>PR-23-000205</i>	<i>Kasagiminnis</i>	<i>Mishkeegogamang</i>
<i>PR-23-000216</i>	<i>South Limb</i>	<i>Mishkeegogamang</i>



*Figure 9 – Status of Permitting at the District-Scale Pickle Lake Gold project-*

## **Field Program and Costs Review**

Ardiden exploration manager, Haydn Daxter was onsite during the quarter undertaking field mapping activities prior to the snow setting in. The aim was to identify historical drill collars to incorporate into the geological model. This will assist us to better understand the prospective 900m strike length at Dorothy and the newly discovered mineralisation at the West Zone. Further review is necessary prior to completing a low-level high resolution geophysical survey across the remainder of the Western Hub to assist in defining the current structural and geological model.

In the meantime, the Company, is undertaking a thorough review of its field costs and logistics in search of cost reduction, including the use of a helicopter and will use this time to better understand the prospectivity of the Western Hub. The review has been expanded to include a review of all administrative and exploration costs with a view to reducing the fixed costs of the Company.

## **CORPORATE**

### ***Board Changes***

On 21 August 2023 Ardiden announced that Bruce McFadzean was stepping down with immediate effect from his position as a Non-Executive Chair of the Board of Ardiden, with Non-Executive Director Michelle Roth taking the reins as Non-Executive Chair.

On the same date Jeremy Robinson and Matthew Freedman were appointed as Non-Executive Directors of the Company.

Mr Robinson is an experienced resources executive, having 20 years of experience in the industry ranging from Managing Director to Business Development positions. He is currently the principal of Churchill Strategic Investments Group, which has financed multiple junior explorers and developers across the ASX and TSX. He currently serves as Non-Executive Chairman of RareX Limited (ASX: REE), Executive Chairman of Cosmos Exploration Limited (ASX: C1X), and pending Non-Executive Director of Kincora Limited.

Mr Freedman is an executive within the mining and related services sector and is currently Executive Director of Dynamic Group Holdings Limited (ASX: DDB), as well as serving as Non-Executive Director of Cosmos Exploration



Limited (ASX:C1X). Mr Freedman has previously held roles with Rio Tinto Limited, Worley Limited, and Emeco Holdings Limited. Mr Freedman earned a Bachelor of Business Administration.

### **Financial Position**

The Company had a strong cash balance at 30 September 2023 of **A\$8.42 million**.

Canada Revenue Agency (CRA) continues to hold part proceeds as withholding for the disposal of the lithium assets. A total of CAD\$4.2 million remains on deposit with CRA. Ardiden expects the majority of the funds on deposit to be remitted back to Ardiden in CY 2024 following receipt of the tax certificates from CRA.

Ardiden continues to retain ~13 million shares in Green Technology Metals (ASX: GT1), which it acquired as part proceeds from the sale of Ardiden's lithium assets. These shares are escrowed until 10 November 2023. The current value of the holding is ~\$5.41M<sup>3</sup>.

Cash outflows for the quarter totalled A\$932k which substantially consisted of exploration activity and related capital of \$550k, staff costs \$230k, and corporate administration of \$264k offset by receipt of interest of \$112k. Other than interest, there were no material cash inflows for the quarter.

Payments to related parties and their associates totalled \$156k (consisting of CEO salary, Non-executive Directors fees including salaries, and superannuation payments).

The detail of the cash receipts and payments is set out in Appendix 5B.

This information is authorised for ASX release by the Board.

### **ENDS**

#### **For further information:**

Greg Romain  
CEO and Managing Director  
Tel: +1 647 300 5417  
info@ardiden.com.au

More information is available from the Company's website: [www.ardiden.com.au](http://www.ardiden.com.au)

For more information including modelling parameters and details, the ASX announcements pertaining to Exploration Results and Mineral Resources are available from the Company's website: [www.ardiden.com.au](http://www.ardiden.com.au)

---

<sup>3</sup> As at closing price (\$0.415) of GT1 on 20 October 2023.



### **Competent Person's Statement**

The Company confirms that it is not aware of any other new information or data that materially affects the information included in the original market announcements referred to above, and in the case of estimates of mineral resources, that all material assumptions and technical parameters underpinning the estimates in the relevant market announcement continue to apply and have not materially changed. The Company confirms that the form and context in which the Competent Person's findings are presented have not been materially modified from the original market announcements.

### **Forward Looking Statement**

This announcement may contain some references to forecasts, estimates, assumptions and other forward-looking statements. Although the company believes that its expectations, estimates and forecast outcomes are based on reasonable assumptions, it can give no assurance that they will be achieved. They may be affected by a variety of variables and changes in underlying assumptions that are subject to risk factors associated with the nature of the business, which could cause actual results to differ materially from those expressed herein. All references to dollars (\$) and cents in this presentation are to Australian currency, unless otherwise stated. Investors should make and rely upon their own enquires and assessments before deciding to acquire or deal in the Company's securities.

### **About Ardiden**

*Ardiden is focused on systematic gold exploration at its 100%- Owned Pickle Lake Gold Project in the well-endowed Uchi Geological Subprovince of north-west Ontario, Canada. The Company's District-Scale Gold Project is the largest continuous gold land holding in the Uchi Belt, where Barrick, Newmont, Kinross, and Evolution all hold significant gold mine and exploration assets. Ardiden's strategic landholding is situated on the same geological belt as Red Lake, the 'Uchi' Subprovince, which has produced over 30M oz of gold to date and where new Tier-1 gold discoveries are still being made, such as Kinross Gold Corporation's (NYSE:KGC)'s Great Bear Project, which reported a maiden resource of 5MOZ Au on 13 February 2023.*

## QUARTERLY TENEMENT SUMMARY

All of the Companies tenements are granted and located in Ontario, Canada.

1. The mining tenements held at the end of the quarter and their location.

Gold Projects	Tenement Number/Claim ID	Beneficial Percentage Interest
Pickle Lake - Connections	536230, 536231, 536232, 536233, 536234, 536235, 536236, 536237, 536238, 536239, 536240, 536241, 536242, 536243, 536244, 536245, 536246, 536247, 536248, 536249, 541336, 541337, 541341, 541344, 541345, 541346, 541350, 541355, 541358, 541359, 541360, 541361, 541366, 541367, 541368, 541369, 541370, 541371, 541372, 541373, 541374, 541375, 541376, 541377, 541378, 541379, 541380, 541381, 541382, 541383, 541384, 541385, 541386, 541387, 541388, 541389, 541390, 541391, 541392, 541393, 541393, 541394, 541395, 541396, 541397, 541398, 541399, 541400, 541401, 566571, 566572, 566573, 566574, 566575, 566576, 566577, 566578, 566579, 566580, 566581, 566582, 566583, 566584, 566585, 566586, 566587, 566588, 566589, 566590, 566591, 566592, 566593, 566594, 566595, 566596, 566597, 566598, 566599, 566600, 566601, 566602, 566603, 566604, 566605, 566606, 566607, 566608, 566609, 566610, 566611, 566612, 566613, 566614, 566615, 566616, 566617.	100%
Pickle Lake – Dempster Lake	579770, 579771, 579772, 579773, 579774, 579997, 579998, 580004, 580005, 580006, 580007, 580008, 580009, 580010, 580015, 580016, 580017, 580018, 580019, 580020, 580021, 580022, 580023, 580024, 580025, 580026, 580027, 580028, 580029, 580030, 580031, 580032, 580033, 580034, 580035, 580036, 580037, 580038, 580039, 580040, 580041, 580042, 580043, 580044, 580045, 580046, 580047, 580048, 580049, 580050, 580051, 580052, 580053, 580054, 580055, 580056, 580057, 580058, 580059, 580060, 580061, 580062, 580063, 580064, 580065, 580066, 580067, 580068, 580069, 580070, 580071, 580072, 580073, 580074, 580075, 580076, 580077, 580078, 580079, 580080, 580081, 580082, 580083, 580084, 580085, 580086, 580087, 580088, 580089, 580090, 580091, 580092, 580093, 580094, 580095, 580096, 580097, 580098, 580099, 580100, 580101, 580102, 580103, 580104, 580105, 580106, 580107, 580108, 580109, 580110, 580111, 580112, 580113, 580114, 580115, 580116, 580117, 580118, 580119, 580120, 580121, 580122, 580123, 580124, 580125, 580126, 580127, 580128, 580129, 580130, 580131, 580132, 580133, 580134, 580135, 580136, 580137, 580138, 580139, 580140, 580141, 580142, 580151, 580152, 580153, 580154, 580155, 580156, 580189, 580190, 580295, 580296, 580297, 580298, 580299, 580300, 580301, 580302, 580303, 580304, 580305, 580306, 580307, 580308, 580309, 580310, 580311, 580312, 580313, 580314, 580315, 580316, 580317, 580318, 580319, 580320, 580321, 580322, 580323, 580324, 580325, 580326, 580327, 580328, 580329, 580330, 580331, 580332, 580333, 580334, 580335, 580336, 580337, 580338, 580339, 580340, 580341, 580342, 580343, 580344, 695376, 704865, 704866, 704867, 704868, 704869, 704870, 704871, 704872, 704873, 704874, 704875, 704876, 704877, 704878, 704879, 704880, 704881, 704882, 704883, 704885, 704886, 704887, 704888, 704889, 704890, 704891, 704893.	100%
Pickle Lake – Dorothy Dobie	104984, 105912, 106176, 106277, 106701, 108546, 108547, 110665, 112086, 112889, 112990, 123364, 124723, 128625, 129964, 130012, 130849, 130944, 130945, 131221, 133040, 133429, 134232, 134448, 134753, 135762, 136226, 140102, 140103, 140104, 141205, 143008, 143009, 145694, 146037, 146857, 146858, 147714, 149493, 149494, 150199, 150524, 150822, 150823, 154016, 154661, 155274, 156088, 157127, 159811, 161295, 161344, 161961, 162581, 162582, 163914, 163956, 166547, 166548, 168691, 169333, 169948, 176602, 176661, 176770, 176793, 176991, 178279, 178630, 178776, 181433, 181634, 183363, 183657, 183658, 183659, 183660, 183661, 183802, 186059, 186838,	100%

Gold Projects	Tenement Number/Claim ID	Beneficial Percentage Interest
	186839, 186840, 187792, 187793, 192633, 193812, 195459, 195771, 196502, 200893, 201767, 205183, 205184, 205185, 207317, 207318, 208735, 208736, 209087, 212985, 213019, 213020, 214000, 214531, 215430, 215446, 215505, 217414, 221873, 223180, 223229, 225203, 231209, 231210, 231211, 233344, 234028, 234647, 235998, 236504, 236505, 236506, 236858, 237737, 237738, 242025, 242026, 242027, 242865, 242885, 245369, 246370, 246778, 248523, 250184, 250376, 250377, 250729, 250918, 250919, 250920, 251226, 251227, 252855, 253832, 253833, 253834, 254138, 254139, 254140, 255485, 255486, 257815, 257816, 261457, 261968, 262541, 265913, 265914, 269312, 269419, 272648, 273934, 273935, 274481, 277187, 279407, 279431, 279432, 282045, 282178, 282650, 284007, 287953, 287954, 289318, 290701, 292076, 292077, 292078, 297909, 297946, 298040, 299720, 299721, 300389, 301466, 302098, 302509, 302510, 303780, 308300, 308702, 308703, 308704, 310059, 310268, 310973, 311804, 316960, 316961, 316984, 316985, 317711, 319530, 319856, 322018, 323277, 323278, 323279, 329251, 329351, 332358, 333405, 334448, 336319, 336320, 337656, 337657, 337827, 337828, 338360, 340200, 340994, 342957, 343786, 343787, 343788, 566618, 566619, 566620, 566621, 566622, 566623, 566624, 566625, 566626, 566627, 566628, 566629, 566630, 566631, 566632, 566633, 566634, 566635, 566636, 566637, 566638, 566639, 566640, 566641, 566642, 566643, 566644, 566645, 566646, 566647, 566648, 566649, 566650, 566651, 566652, 566653, 566654, 566655, 566656, 566657, 566658, 566659, 566660, 566661, 566662, 566663, 566664, 566935, 566936, 566937, 566938, 566939, 566940, 566941, 566942, 566943, 566944, 566945, 566946, 566947, 566948, 566949, 566950, 566951, 566952, 566953, 566954, 566955, 566956, 566957, 566958, 566959, 566960, 566961, 566962, 566963, 566964, 566965, 566966, 566967, 566968, 566969, 566970, 566971, 566972, 566973, 566974, 566975, 566976, 566977, 566978, 566979, 566980, 566981, 566982, 566983, 566984, 695378, 834414.	
Pickle Lake – Dorothy Dobie North	613951, 613952, 613953, 613954, 613955, 613956, 613957, 613958, 613959, 613960, 613961, 613962, 613963, 613964, 613965, 613966, 613967, 613968, 613969, 613970, 613971, 613972, 613973, 613974, 613975, 613976, 613977, 613978, 613979, 613980, 613981, 613982, 613983, 613984, 613985, 613986, 613987, 613988, 613989, 613990, 613991, 613992, 613993, 613994, 613995, 613996, 613997, 613998, 613999, 614000, 614001, 614002, 614003, 614004, 614005, 614006, 614007, 614008, 614009, 614010, 614011, 614012, 614013, 614014, 614015, 614016, 614017, 614018, 614019, 614020, 614021, 614022, 614023, 614024, 614025, 614026, 614027, 614028, 614029, 614030, 614031, 614032, 614033, 614034, 614035, 614036, 614037, 614038, 614039, 614040, 614041, 614042, 614043, 614044, 614045, 614046, 614047, 614048, 614049, 614050, 614051, 614052, 614053, 614054, 614055, 614056, 614057, 614058, 614059, 614060, 614061, 614062, 614063, 614064, 614065, 614066, 614067, 614068, 614069, 614070, 614071, 614072, 614073, 614074, 614075, 614076, 614077, 614078, 614079, 614080, 614081, 614082, 614083, 614084, 614085, 614086, 614087, 614088, 614089, 614090, 614091, 614092, 614093, 614094, 614095, 614096, 614097, 614098, 614099, 614100, 614101, 614102, 614103, 614104, 614105, 614106, 614107, 614108, 614109, 614110, 614111, 614112, 614113, 614114, 614115, 614116, 614117, 614118, 614119, 614120, 614121, 614122, 614123, 614124, 614125, 614126, 614127, 614128, 614129, 614130, 614131, 614132, 614133, 614134, 614135, 614136, 614137, 614138, 614139, 614140, 614141, 614142, 614143, 614144, 614145, 614146, 614147, 614148, 614149, 614150, 614151, 614152, 614153, 614154, 614155, 614156, 614157, 614158, 614159, 614160, 614161, 614162, 614163, 614164, 614165, 614166, 614167, 614168, 614169, 614170, 614171, 614172, 614173, 614174, 614175,	100%

Gold Projects	Tenement Number/Claim ID	Beneficial Percentage Interest
	614176, 614177, 614178, 614179, 614180, 614181, 614182, 614183, 614184, 614185, 614186, 614187, 614188, 614189, 614190, 614191, 614192, 614193, 614194, 614195, 614196, 614197, 614198, 614199, 614200, 614201, 614202, 614203, 614204, 614205, 614206, 614207, 614208, 614209, 614210, 614211, 614212, 614213, 614214, 614215, 614216, 614217, 614218, 614219, 614220, 614221, 614222, 614223, 614224, 614225, 614226, 614227, 614228, 614229, 614230, 614231, 614232, 695374.	
Pickle Lake – Duffell Lake	579696, 579697, 579698, 579699, 579700, 579701, 579702, 579703, 579704, 579705, 579706, 579707, 579708, 579709, 579710, 579711, 579712, 579713, 579714, 579715, 579716, 579717, 579718, 579719, 579720, 579721, 579722, 579723, 579724, 579725, 579726, 579727, 579728, 579729, 579730, 579731, 579732, 579733, 579734, 579735, 579736, 579737, 579738, 579739, 579740, 579741, 579742, 579743, 579744, 579745, 579746, 579747, 579748, 579749, 579750, 579751, 579752, 579753, 579754, 579755, 579756, 579757, 579758, 579759, 579760, 579761, 579762, 579763, 579764, 579765, 579766, 579767, 579768, 579769, 579993, 579994, 579995, 579996, 579999, 580000, 580001, 580002, 580003, 580011, 580012, 580013, 580014, 695351, 695352.	100%
Pickle Lake – Fry-McVean	581408, 581409, 581410, 581411, 581412, 581413, 581414, 581415, 581416, 581417, 581418, 581419, 581420, 581421, 581422, 581423, 581424, 581425, 581426, 581427, 581428, 581429, 581430, 581431, 581432, 581433, 581434, 581435, 581436, 581437, 581438, 581439, 581440, 581441, 581442, 581443, 581444, 581445, 581446, 581447, 581448, 581449, 581450, 581451, 581452, 581453, 581454, 581455, 581456, 581457, 581458, 581459, 581460, 581461, 581462, 581463, 581464, 581465, 581466, 581467, 581468, 581469, 581470, 581471, 581472, 581473, 581474, 581475, 581476, 581477, 581478, 581479, 581480, 581481, 581482, 581483, 581484, 581485, 581486, 581487, 581488, 581489, 581490, 581491, 581492, 581493, 581494, 581495, 581496, 581497, 581498, 581499, 581500, 581501, 581502, 581503, 581504, 581505, 581506, 581507, 581508, 581509, 581510, 581511, 581512, 581513, 581514, 581515, 581516, 581517, 581518, 581519, 581520, 581521, 581522, 581523, 581524, 581525, 581526, 581527, 581528, 581529, 581530, 581531, 581532, 581533, 581534, 581535, 581536, 581537, 581538, 581539, 581540, 581541, 581542, 581543, 581544, 581545, 581546, 581547, 581548, 581549, 581550, 581551, 581552, 581553, 581554, 581555, 581556, 581557, 581558, 581559, 581560, 581561, 581562, 581563, 581564, 581565, 581566, 581567, 581568, 581569, 581570, 581571, 581572, 581573, 581574, 581575, 581576, 581577, 581578, 581579, 581580, 581581, 581582, 581583, 581584, 581585, 581586, 581587, 581588, 581589, 581590, 581591, 581592, 581593, 581594, 581595, 581596, 581597, 581598, 581599, 581600, 581601, 581602, 581603, 581604, 581605, 581606, 581607, 581608, 581609, 581610, 581611, 581612, 581613, 581614, 581615, 581616, 581617, 581618, 581619, 581620, 581621, 581622, 581623, 581624, 581625, 581626, 581627, 581628, 581629, 581630, 581631, 581632, 581633, 581634, 581635, 581636, 581637, 581638, 581639, 581640, 581641, 581642, 581643, 581644, 581645, 581646, 581647, 581648, 581649, 581650, 581651, 581652, 581653, 581654, 581655, 581656, 581657, 581658, 581659, 581660, 581661, 581662, 581663, 581664, 581665, 581666, 581667, 581668, 581669, 581670, 581671, 581672, 581673, 581674, 581675, 581676, 581677, 581678, 581679, 581680, 581681, 581682, 581683, 581684, 581685, 581686, 581687, 581688, 581689, 581690, 581691, 581692, 581693, 581694, 581695, 581696, 581697, 581698, 581699, 581700, 581701, 581702, 581703, 581704, 581705, 581706, 581707, 581726, 581727, 581728, 581729, 581730, 581731, 581732, 581733, 581734, 581735, 581736, 581737, 581738, 581739, 581740, 581741, 581742, 581743, 581744, 581745, 581746, 581747, 581748, 581749,	100%

Gold Projects	Tenement Number/Claim ID	Beneficial Percentage Interest
	581750, 581751, 581752, 581753, 581754, 581755, 581756, 581757, 581758, 581759, 581760, 581761, 581762, 581763, 581764, 581765, 581766, 581767, 581768, 581769, 581770, 581771, 581772, 581773, 581774, 581775, 581779, 581780, 581781, 581782, 581783, 581784, 581785, 581786, 581787, 581788, 581789, 581790, 581791, 581792, 581793, 581794, 581795, 581796, 581797, 581798, 581799, 581800, 581801, 581802, 581803, 581804, 581805, 581806, 581807, 581808, 581809, 581810, 581811, 581812, 581813, 581814, 581815, 581816, 581817, 581818, 581819, 581820, 581821, 581822, 581823, 581824, 581825, 581826, 581827, 581828, 581830, 581831, 581832, 581833, 581834, 581835, 581836, 581837, 581838, 581839, 581840, 581841, 581842, 581843, 581844, 581845, 581846, 581847, 581848, 581849, 581850, 581851, 581852, 581853, 581854, 581855, 581856, 581857, 581858, 581859, 581860, 581861, 581862, 581863, 581864, 581865, 581866, 581867, 581868, 581869, 581870, 581871, 581872, 581873, 581874, 581875, 581876, 581877, 581878, 581879, 581880, 581881, 581882, 581883, 581884, 581885, 581886, 581887, 581888, 581889, 581890, 581891, 581892, 581893, 581894, 581895, 581896, 581897, 581898, 581899, 581900, 581901, 581902, 581903, 581904, 581905, 581906, 581907, 581908, 581909, 581910, 581911, 581912, 581913, 581914, 581915, 581916, 581917, 581918, 581919, 581920, 581921, 581922, 581923, 581924, 581925, 581926, 581927, 581928, 581929, 581930, 581931, 581932, 581933, 581934, 581935, 581936, 581937, 581938, 581939, 581940, 581941, 581942, 581943, 581944, 581945, 581946, 581947, 581948, 581949, 581950, 581951, 581952, 581953, 581954, 581955, 581956, 581957, 581958, 581959, 581960, 581961, 581962, 581963, 581964, 581965, 581966, 581967, 581968, 581969, 581970, 581971, 581972, 581973, 581974, 581975, 581976, 581977, 581978, 581979, 581981, 581982, 581983, 581984, 581985, 581986, 581987, 581988, 581989, 581990, 581991, 581992, 581993, 581994, 581995, 581996, 581997, 581998, 581999, 582000, 582001, 582002, 582003, 582004, 582005, 582006, 582007, 582008, 582009, 582010, 582011, 582012, 582013, 582014, 582015, 582016, 582017, 582018, 582019, 582020, 582021, 582022, 582023, 582024, 582025, 582026, 582027, 582028, 582029, 582030, 582031, 582032, 582033, 582034, 582035, 582036, 582037, 582038, 582039, 582040, 582041, 582042, 582043, 582044, 582045, 582046, 582047, 582048, 582049, 582050, 582051, 582052, 582053, 582054, 582055, 582056, 582057, 582058, 582059, 582060, 582061, 582062, 582063, 582064, 582065, 582066, 582067, 582068, 582069, 582070, 582071, 582072, 582073, 582074, 582075, 582076, 582077, 582078, 582079, 582080, 582081, 582082, 582083, 582084, 582085, 582086, 582087, 582088, 582089, 582090, 582091, 582092, 582093, 582094, 582095, 582096, 582097, 582098, 582099, 582100, 582101, 582102, 582103, 582104, 582105, 582106, 582107, 582108, 582109, 582110, 582111, 582112, 582113, 582114, 582115, 582116, 582117, 582118, 582119, 582120, 582121, 582122, 582123, 582124, 582125, 582126, 582127, 582128, 582129, 582130, 582131, 582132, 582133, 582134, 582135, 582136, 582137, 582138, 582139, 582140, 582141, 582142, 582143, 582144, 582145, 582146, 582147, 582148, 582149, 582150, 582151, 582152, 582153, 582154, 582155, 582156, 582157, 582158, 582159, 582160, 582161, 582162, 582163, 582164, 582165, 582166, 582167, 582168, 582169, 582170, 582171, 582172, 582173, 582174, 582175, 582176, 582177, 582178, 582179, 582180, 582181, 582182, 582183, 582184, 582185, 582186, 582187, 582188, 582189, 582190, 582191, 582192, 582193, 582194, 582195, 582196, 582197, 582198, 582199, 582200, 582201, 582202, 582203, 582204, 582205, 582206, 582207, 582208, 582209, 582210, 582211, 582212, 582213, 582214, 582215, 582216, 582217, 582218, 582219, 582220, 582221, 582222, 582223, 582224, 582225, 582226, 582227, 582228, 582229, 582230, 582231,	

Gold Projects	Tenement Number/Claim ID	Beneficial Percentage Interest
	582232, 672256, 695231, 695232, 695233, 695234, 695235, 695236, 695237, 695238, 695239, 695240, 695241, 695242, 695243, 695244, 695245, 695246, 695247, 695248, 695249, 695250, 695251, 695252, 695253, 695254, 695255, 695256, 695257, 695258, 695259, 695260, 695261, 695262, 695263, 695264, 695265, 695266, 695267, 695268, 695269, 695270, 695271, 695272, 695273, 695274, 695275, 695276, 695277, 695257, 695265, 695276, 695278, 695279, 695280, 695281, 695282, 695283, 695284, 695285, 695286, 695287, 695288, 695289, 695290, 695291, 695292, 695293, 695294, 695295, 695296, 695297, 695298, 695299, 695300, 695301, 695302, 695303, 695304, 695305, 695306, 695307, 695308, 695309, 695310, 695311, 695312, 695313, 695314, 695315, 695316, 695317, 695318, 695319, 695320, 695321, 695322, 695323, 695324, 695325, 695358, 695367, 695372, 723858, 723859, 723860, 723861, 723862, 723863, 723864.	
Pickle Lake – Jean Lake	574692, 574693, 574694, 574695, 574696, 574697, 574698, 574699, 574700, 574701, 574702, 574703, 574704, 574705, 574706, 574707, 574708, 574709, 574710, 574711, 574712, 574713, 574714, 574715, 574716, 574717, 574718, 574719, 574720, 574721, 574730, 574734, 574735, 574736, 574737, 574738, 574739, 574740, 574741, 574792, 574793, 574794, 574795, 574796, 574797, 574798, 574799, 574800, 574801, 574802, 574803, 574804, 574805, 574806, 574807, 574808, 574809, 574810, 574811, 574812, 574813, 574814, 574815, 574816, 574817, 574818, 574819, 574820, 574821, 574822, 574823, 574824, 574825, 574826, 574827, 574828, 574829, 574830, 574831, 574832, 574833, 574834, 574835, 574836, 574837, 574838, 574839, 574840, 574841, 574864, 574865, 574866, 574867, 574868, 574869, 574870.	100%
Pickle Lake – Kasagiminnis	107775, 110169, 122181, 122182, 122183, 122898, 122899, 124715, 124717, 133631, 136219, 136220, 136221, 141049, 142242, 181427, 186270, 187592, 188198, 198429, 199793, 200883, 236849, 254414, 265109, 266397, 281542, 282778, 289590, 290904, 290905, 301653, 310309, 310310, 310311, 310962, 319583, 340456, 341762, 341763, 713443, 803062, 809113, 848611	100%
Pickle Lake – Kasagiminnis North	614233, 614234, 614235, 614236, 614237, 614238, 614239, 614240, 614241, 614242, 614243, 614244, 614245, 614246, 614247, 614248, 614249, 614250, 614251, 614252, 614253, 614254, 614255, 614256, 614257, 614258, 614259, 614260, 614261, 614262, 614263, 614264, 614265, 614266, 614267, 614268, 614269, 614270, 614271, 614272, 614273, 614274, 614275, 614276, 614277, 614278, 614279, 614280, 614281, 614282, 614283, 614284, 614285, 614286, 614287, 614288, 614289, 614290, 614291, 614292, 614293, 614294, 614295, 614296, 614297, 614298, 614299, 614300, 614301, 614302, 614303, 614304, 614305, 614306, 614307, 614308, 614309, 614310, 614311, 614312, 614313, 614314, 614315, 614316, 614317, 614318, 614319, 614320, 614321, 614322, 614323, 614324, 614325, 614326, 614327, 614328, 614329, 614330, 614331, 614332, 614333, 614334, 614335, 614336, 614337, 614338, 614339, 614340, 614341, 614342, 614343, 614344, 614345, 614346, 614347, 614348, 614349, 614350, 614351, 614352, 614353, 614354, 614355, 614356, 614357, 614358, 614359, 614360, 614361, 614362, 614363, 614364, 614365, 614366, 614367, 614368, 614369, 614370, 614371, 614372, 614373, 614374, 614375, 614376, 614377, 614378, 614379, 614380, 614381, 614382, 614383, 614384, 614385, 614386, 614387, 614388, 614389, 614390, 614391, 614392, 614393, 614394, 614395, 614396, 614397, 614398, 614399, 614400, 614401, 614402, 614403, 614404, 614405, 614406, 614407, 614408, 614409, 614410, 614411, 614412, 614413, 614414, 614415, 614416, 614417, 614418, 614419, 614420, 614421, 614422, 614423, 614424, 614425, 614426, 614427, 614428, 614429, 614430, 614431, 614432, 614433, 614434, 614435, 614436, 614437, 614438, 614439, 614440, 614441, 614442, 614443, 614444, 614445, 614446, 614447, 614448,	100%

Gold Projects	Tenement Number/Claim ID	Beneficial Percentage Interest
	614449, 614450, 614451, 614452, 614453, 614454, 614455, 614456, 614457, 614458, 614459, 614460, 614461, 614462, 614463, 614464, 614465, 614466, 614467, 614468, 614469, 614470, 614471, 614472, 614473, 614474, 614475, 614476, 614477, 614478, 614479, 614480, 614481, 614482, 614483, 614484, 614485, 614486, 614487, 614488, 614489, 614490, 614491, 614492, 614493, 614494, 614495, 614496, 614497, 614498, 614499, 614500, 614501, 614502, 614503, 614504, 614505, 614506, 614507, 614508, 614509, 614510, 614511, 614512, 614513, 614514, 614515, 614516, 614517, 614518, 614519, 614520, 614521, 614522, 614523, 614524, 614525, 614526, 614527, 614528, 614529, 614530, 614531, 614532, 614533, 614534, 614535, 614536, 614537, 614538, 614539, 614540, 614541, 614542, 614543, 614544, 614545, 614546, 614547, 614548, 614549, 614550, 614551, 614552, 614553, 614554, 614555, 614556, 614557, 614558, 614559, 614560, 614561, 614562, 614563, 614564, 614565, 614566, 614567, 614568, 614569, 614570, 614571, 614572, 614573, 614574, 614575, 614576, 614577, 614578, 614579, 614580, 614581, 614582, 614583, 614584, 614585, 614586, 614587, 614588, 614589, 614590, 614591, 614592, 614593, 614594, 614595, 614596, 614597, 614598, 614599, 614600, 614601, 614602, 614603, 614604, 614605, 614606, 614607, 614608, 614609, 614610, 742484, 742485, 742486, 742487, 742488, 742489, 742490, 742491, 742492, 742493, 742494, 742495, 742496, 742497, 742498.	
Pickle Lake – Kawashe Lake	574871, 574872, 574873, 574874, 574875, 574876, 574877, 574878, 574879, 574880, 574881, 574882, 574883, 574884, 574885, 574886, 574887, 574888, 574889, 574890, 574891, 574892, 574893, 574894, 574895, 574896, 574897, 574898, 574899, 574900, 574901, 574902, 574903, 574904, 574905, 574906, 574907, 574908, 574909, 574910, 574911, 574912, 574913, 574914, 574915, 574916, 574917, 574918, 574919, 574920, 574921, 574922, 574923, 574924, 574925, 574926, 574927, 574928, 574929, 574930, 574931, 574932, 574933, 574934, 574935, 574936, 574937, 574938, 574939, 574940, 574941, 574942, 574943, 574944, 574945, 574946, 574947, 574948, 574949, 574950, 574951, 574952, 574953, 574954, 574955, 574956, 574957, 574958, 574959, 574960, 574961, 574962, 574963, 574964, 574965, 574966, 574967, 574968, 574969, 574970, 574971, 574972, 574973, 574974, 574975, 574976, 574977, 574978, 574979, 574980, 574981, 574982, 574983, 574984, 574985, 574986, 574987, 574988, 574989, 574990, 574991, 574992, 574993, 574994, 574995, 574996, 574997, 574998, 574999, 575000, 575001, 575002, 575003, 575004, 575005, 575006, 575007, 575008, 575009, 575010, 575011, 575012, 575013, 575014, 575015, 575016, 575017, 575018, 575019, 575020, 575021, 575022, 575023, 575024, 575025, 575026, 575027, 575028, 575029, 575030, 575031, 575032, 575033, 575034, 575035, 575036, 575037, 575038, 575039, 575040, 575041, 575042, 575043, 575044, 575045, 575046, 575047, 575048, 575049, 575050, 575051, 575052, 575053, 575054, 575055, 575056, 575057, 575058, 575059, 575060, 575061, 575062, 575063, 575064, 575065, 575066, 575067, 575068, 575069, 575070, 575071, 575072, 575073, 575074, 575075, 575076, 575077, 575078, 575079, 575080, 575081, 575082, 575083, 575084, 575085, 575086, 575087, 575088, 575089, 575090, 575091, 575092, 575093, 575094, 575095, 575096, 575097, 575098, 575099, 575100, 575101, 575102, 575103, 575104, 575105, 575106, 575107, 575108, 575109, 575110, 575111, 575112, 575113, 575114, 575115, 575116, 575117, 575118, 575119, 575120, 575121, 575122, 575123, 575124, 575125, 575126, 575127, 575128, 575129, 575130, 575131, 575132, 575133, 575134, 575135, 575136, 575137, 575138, 575139, 575140, 575141, 575142, 575143, 575144, 575145, 575146, 575147, 575148, 575149, 575150, 575151, 575152, 575153, 575154, 575155, 575156, 575157, 575158, 575159, 575160, 575161, 575162, 575163, 575164, 575165, 575166, 575167, 575168,	100%

Gold Projects	Tenement Number/Claim ID	Beneficial Percentage Interest
	575169, 575170, 575171, 575172, 575173, 575174, 575175, 575176, 575177, 575178, 575179, 575180, 575181, 575182, 575183, 575184, 575185, 575186, 575187, 575188, 575189, 575190, 575191, 575192, 575193, 575194, 575195, 575196, 575197, 575198, 719921.	
Pickle Lake – Kawashe Lake North	625482, 625483, 625484, 625485, 625486, 625487, 625488, 625489, 625490, 625491, 625492, 625493, 625494, 625495, 625496, 625497, 625498, 625499, 625500, 625502, 625503, 625504, 625505, 625506, 625507, 625508, 625509, 625510, 625511, 625512, 625513, 625514, 625515, 625516, 625517, 625518, 625519, 625520, 625521, 625522, 625523, 625524, 625525, 625526, 625527, 625528, 625529, 625530, 625531, 625532, 625533, 625534, 625535, 625536, 625537, 625538, 625539, 625540, 625541, 625542, 625543, 625544, 625545, 625546.	100%
Pickle Lake – Keating Lake	574492, 574493, 574494, 574495, 574496, 574497, 574498, 574499, 574500, 574501, 574502, 574503, 574504, 574505, 574506, 574507, 574508, 574509, 574510, 574511, 574512, 574513, 574514, 574515, 574516, 574517, 574518, 574519, 574520, 574521, 574522, 574523, 574524, 574525, 574526, 574527, 574528, 574529, 574530, 574531, 574532, 574533, 574534, 574535, 574536, 574537, 574538, 574539, 574540, 574541, 574542, 574543, 574544, 574545, 574546, 574547, 574548, 574549, 574550, 574551, 574552, 574553, 574554, 574555, 574556, 574557, 574558, 574559, 574560, 574561, 574562, 574563, 574564, 574565, 574566, 574567, 574568, 574569, 574570, 574571, 574572, 574573, 574574, 574575, 574576, 574577, 574578, 574579, 574580, 574581, 574582, 574583, 574584, 574585, 574586, 574587, 574588, 574589, 574590, 574591, 574722, 574723, 574724, 574725, 574726, 574727, 574728, 574729, 574731, 574732, 574733, 579929, 579930, 579931, 579932, 579933, 579934, 579935, 579936, 579937, 579938, 579939, 579940, 579941, 579942, 579943, 579944, 579945, 579946, 579947, 579948, 579949, 579950, 579951, 579952, 579953, 579954, 579955, 579956, 579957, 579958, 579959, 579960, 579961, 579962, 579963, 579964, 579965, 579966, 579967, 579968, 579969, 579970, 579971, 579972, 579973, 579974, 579975, 579976, 579977, 579978.	100%
Pickle Lake – Meen Lake	579775, 579776, 579777, 579778, 579779, 579780, 579781, 579782, 579783, 579784, 579785, 579786, 579787, 579788, 579789, 579790, 579791, 579792, 579793, 579794, 579795, 579796, 579797, 579798, 579799, 579800, 579801, 579802, 579803, 579804, 579805, 579806, 579807, 579808, 579809, 579810, 579811, 579812, 579813, 579814, 579815, 579816, 579817, 579818, 579819, 579820, 579821, 579822, 579823, 579824, 579825, 579826, 579827, 579828, 579829, 579830, 579831, 579832, 579833, 579834, 579835, 579836, 579837, 579838, 579839, 579840, 579841, 579842, 579843, 579844, 579845, 579846, 579847, 579848, 579849, 579850, 579851, 579852, 579853, 579854, 579855, 579856, 579857, 579858, 579859, 579860, 579861, 579862, 579863, 579864, 579865, 579866, 579867, 579868, 579869, 579870, 579871, 579872, 579873, 579874, 579875, 579876, 579877, 579878, 579879, 579880, 579881, 579882, 579883, 579884, 579885, 579886, 579887, 579888, 579889, 579890, 579891, 579892, 579893, 579894, 579895, 579896, 579897, 579898, 579899, 579900, 579901, 579902, 579903, 579904, 579905, 579906, 579907, 579908, 579909, 579910, 579911, 579912, 579913, 579914, 579915, 579916, 579917, 579918, 579919, 579920, 579921, 579922, 579923, 579924, 579925, 579926, 579927, 579928, 695369, 695683, 695688, 706126, 706127, 706128, 706129, 706130, 706131, 706132, 706133, 706134, 706135, 706136, 706137, 706138, 706139, 706140, 706141, 706142, 706143, 706144, 706145, 706146, 706149, 706150, 706151, 706152, 706153, 706154, 706155, 706156, 706157, 706158, 706159, 706160, 706161, 706162, 706163, 706164, 706165, 706166, 706167, 706168, 706169, 706170, 706171, 706172, 706173, 706174, 706175, 706176, 706177,	100%



Gold Projects	Tenement Number/Claim ID	Beneficial Percentage Interest
	706178, 706179, 706180, 706181, 706182, 706183, 706184, 706185, 706186, 706187, 706188, 706189, 706190, 706191, 706192, 706193, 706194, 706195, 706196, 706197, 706198, 706199, 706200, 706201, 706202, 706203, 706204, 706205, 706206, 706207, 706208, 706209, 706210, 706211, 706212, 706213, 706214, 706215, 706216, 706217, 706218, 706219, 706220, 706221, 706222, 706223, 706224, 706225, 706226, 706227, 706228, 706229, 706230, 706231, 706232, 706233, 706234, 706235, 706236, 706237, 706238, 706239, 706240, 706241, 706242, 706243, 706244, 706245, 706246, 706247, 706248, 706249, 706250, 706251, 706252, 706253, 706254, 706255, 706256, 706257, 706258, 706259, 706260, 706261, 706262, 706263, 706264, 706265, 706266, 706267, 706268, 706269, 706270, 706271, 706272, 706273, 706274, 706275, 706276, 706277, 706278, 706279, 706280, 706281, 706282, 706283, 706284, 706285, 706286, 706287, 706288, 706289, 706290, 706291, 706292, 706293, 706294, 706295, 706296, 706297, 706298, 706299, 706300, 706301, 706302, 706303, 706304, 706305, 706306, 706307, 706308, 706309, 706310, 706311, 706312, 706313, 706314, 706315, 706316, 706317, 706318, 706319, 706320, 706321, 706322, 706323, 706324, 706325, 706326, 706327, 706328, 706329, 706330, 706331, 706332, 706333, 706334, 706335, 706336, 706337, 706338, 706339, 706340, 706341, 706342, 706343, 706344, 706345, 706346, 706347, 706348.	
Pickle Lake - Nabemakoseka	704777, 704778, 704779, 704780, 704781, 704782, 704783, 704784, 704785, 704786, 704787, 704788, 704789, 704790, 704791, 704792, 704793, 704794, 704795, 704796, 704797, 704798, 704799, 704800, 704801, 704802, 704803, 704804, 704805, 704806, 704807, 704808, 704809, 704810, 704811, 704812, 704813, 704814, 704815, 704816, 704817, 704818, 704819, 704820, 704821, 704822, 704823, 704824, 704825, 704826, 704827, 704828, 704829, 704830, 704831, 704832, 704833, 704834, 704835, 704836, 704837, 704838, 704839, 704840, 704841, 704842, 704843, 704844, 704845, 704846, 704847, 704849, 704850, 704851, 704852, 704853, 704854, 704855, 704856, 704857, 704858, 704859, 704860, 704969, 704970, 704971, 704972, 704973, 704974, 704975, 704976, 704977, 704978, 704979, 704980, 704981, 704982, 704983, 704984, 704985, 704986, 704987, 904988, 704989, 704990, 704991, 704992, 704993, 704994, 704995, 704996, 704997, 704998, 704999, 705000, 705001, 705002, 705003, 705004, 705005, 705006, 705007, 705008, 705009, 705010, 705011, 705012, 705013, 705014, 705015, 705016, 705017, 705018, 705019, 705020, 705021, 705022, 705023, 705024, 705025, 705026, 705027, 705028, 705029, 705030, 705031, 705032, 705033, 705034, 705035, 705036, 705037, 705038, 705039, 705040, 705041, 705042, 705043, 705044, 705045, 705046, 705047, 705048, 705049, 705050, 705051, 705052, 705053, 705054, 705055, 705056, 705057, 705058, 705059, 705060, 705061, 705062, 705063, 705064, 705065, 705066, 705067, 705068, 705069, 705070, 705071, 705072, 705073, 705074, 705075, 705076, 705077, 705078, 705079, 705080, 705081, 705082, 705083, 705084, 705085, 705086, 705087, 705088, 705089, 705090, 705091, 705092, 705093, 705094, 705095, 705096, 705097, 705098, 705099, 705100, 705101, 705102, 705103, 705104, 705105, 705106, 705107, 705108, 705109, 705110, 705111, 705112, 705113, 705114, 705115, 705116, 705117, 705118, 706097, 706098, 706099, 706100, 706101, 706102, 706103, 706104, 706105, 706106, 706107, 706108, 706109, 706110, 706111, 706112, 706113, 706114, 706115, 706116, 706117, 706118, 706119, 706120, 706121, 706122, 706123, 706124, 706125, 733146, 733147, 733148, 733149, 795351.	100%
Pickle Lake – New Patricia	131784, 147867, 147868, 147869, 147870, 147871, 159805, 161958, 184465, 193806, 196500, 211821, 214522, 214523, 214524, 240460, 248516, 248517, 248518, 248519, 251221, 260527, 300387, 315009, 315010, 315011, 317709, 329913, 329914, 329915, 329916, 335930, 339299, 500919, 500920, 500921,	100%

Gold Projects	Tenement Number/Claim ID	Beneficial Percentage Interest
	500922, 500923, 500924, 500925, 500926, 500927, 500928, 500929, 500930, 500931, 500932, 500933, 500934, 500935, 500936, 500937, 500938, 500939, 500940, 500941, 500942, 500943, 500944, 500945, 500946, 500947, 500948, 500949, 500950, 500951, 500952, 500953, 500954, 500955, 500956, 500957, 500958, 500959, 500960, 500961, 500962, 500963, 500964, 500965, 500966, 500967, 500968, 500969, 500970, 500971, 500972, 500973, 500974, 500975, 500976, 500977, 500978, 500979, 500980, 500981, 500982, 500983, 500984, 500985, 500986, 500987, 500988, 500989, 500990, 500991, 500992, 500993, 500994, 500995, 500996, 500997, 500998, 500999, 501000, 501001, 501002, 501003, 501004, 501005, 501006, 501007, 501008, 501009, 501010, 501011, 501012, 501013, 501014, 501015, 501016, 501017, 501018, 501142, 501143, 501144, 501145, 501146, 501147, 501148, 501149, 501150, 501151, 501152, 501153, 501154, 501155, 501156, 501157, 501158, 501159, 501160, 501161, 501162, 501163, 501164, 501165, 501166, 501167, 501168, 501169, 501170, 501171, 501172, 501173, 501174, 501175, 501176, 501177, 501178, 501179, 501180, 501181, 501182, 501183, 501184, 501185, 501186, 501187, 501188, 501189, 501190, 501191, 501210, 501211, 501212, 501213, 501214, 501215, 501216, 501217, 501218, 501219, 501220, 501221, 501222, 501223, 501224, 501225, 501226, 501227, 501228, 501229, 501230, 501231, 501232, 501233, 501234, 501235, 501236, 501237, 501238, 501239, 501240, 501241, 501242, 501243, 501244, 501245, 501246, 501247, 501248, 501249, 501250, 501251, 501252, 501253, 501254, 501255, 501256, 501257, 501258, 501259, 501292, 501293, 501294, 501295, 501296, 501297, 501298, 501299, 501300, 501301, 501302, 501303, 501304, 501305, 501306, 501307, 501308, 501309, 501310, 501311, 501312, 501313, 501314, 501315, 501316, 501317, 501318, 501319, 501320, 501321, 501322, 501323, 501324, 501325, 501326, 501327, 501328, 501329, 501330, 501331, 501332, 501333, 501339, 501340, 501341, 501342, 501343, 501344, 501345, 501346, 501347, 501348, 501349, 501350, 501351, 501352, 501353, 501354, 501355, 501356, 501357, 501358, 501359, 501360, 501361, 501362, 501363, 501364, 501365, 501366, 501367, 501368, 501369, 501370, 501371, 501372, 501373, 501374, 501375, 501376, 501377, 501378, 501379, 501380, 501381, 501382, 501383, 501384, 501385, 501386, 501387, 501388, 501527, 501528, 501529, 501530, 501531, 501532, 501533, 501534, 501535, 501536, 501537, 501538, 501539, 501540, 501541, 501542, 501543, 501544, 501545, 501546, 501547, 501548, 501549, 501550, 501551, 501552, 501568, 501569, 501570, 501571, 501572, 501573, 501574, 501575, 501576, 501577, 501578, 501579, 501580, 501581, 501582, 501583, 501584, 501585, 501586, 501587, 501588, 501589, 501590, 501591, 501592, 501593, 501594, 501595, 501596, 501597, 501598, 501599, 501600, 501601, 501602, 501603, 501604, 501605, 501606, 501607, 501608, 501609, 501610, 501611, 501612, 501613, 501614, 501615, 501616, 501617, 501814, 501815, 501816, 501817, 501818, 501819, 501820, 501821, 501822, 501823, 501824, 501825, 501826, 501827, 501828, 501829, 501830, 501831, 501832, 501833, 501834, 501835, 501836, 501837, 501838, 501839, 501840, 501841, 501842, 501843, 501844, 501845, 501846, 501847, 501848, 501849, 501850, 501851, 501852, 501853, 501854, 501855, 501856, 501857, 501858, 501859, 501860, 501861, 501862, 501863, 502011, 502012, 502013, 502014, 502015, 502016, 502017, 502018, 502019, 502020, 502021, 502022, 502023, 502024, 502025, 502026, 502027, 502028, 502029, 502030, 502031, 502032, 502033, 502034, 502035, 502036, 502037, 502038, 502039, 502040, 502041, 502042, 502043, 502044, 502045, 502046, 502047, 502048, 502049, 502050, 502051, 502052, 502053, 502054, 502055, 502056, 502057, 502058, 502059, 502060, 502132, 502133, 502134, 502135, 502136, 502137, 502138, 502139, 502140, 502141, 502142, 502143,	

Gold Projects	Tenement Number/Claim ID	Beneficial Percentage Interest
	502144, 502145, 502146, 502147, 502148, 502149, 502150, 502151, 502152, 502153, 502154, 502155, 502156, 502157, 502158, 502159, 502160, 502161, 502162, 502163, 502164, 502165, 502166, 502167, 502168, 502169, 502170, 502171, 502172, 502173, 502174, 502175, 502176, 502177, 502178, 502179, 502180, 502181, 502227, 502229, 502231, 502232, 502234, 502236, 502238, 502240, 502241, 502243, 502245, 520337, 520338, 520339, 520340, 520935, 520936, 520937, 520938, 520939, 520940, 520941, 520942, 520943, 520944, 520945, 520946, 520947, 520948, 520949, 520950, 520951, 520952, 520953, 520954, 520955, 520956, 520957, 520958, 520959, 520960, 520961, 520962, 520963, 520964, 520965, 520966, 520967, 520968, 520969, 520970, 520971, 520972, 520973, 520974, 520975, 520976, 520977, 520978, 520979, 520980, 520981, 520982, 520983, 520984, 520985, 520986, 520987, 520988, 520989, 520990, 520991, 520992, 520993, 520994, 520995, 520996, 520997, 520998, 520999, 521000, 521001, 521002, 521003, 521004, 521005, 521006, 521007, 521008, 521009, 521010, 521011, 521012, 521013, 521014, 521015, 521016, 521017, 521018, 521019, 521020, 521021, 521022, 521023, 521024, 521025, 521026, 521027, 521028, 521029, 521030, 521031, 521032, 521033, 521034, 521035, 521036, 521037, 521038, 521039, 521040, 521041, 521042, 521043, 521044, 521045, 521046.	
Pickle Lake – Reylea Lake	580157, 580158, 580159, 580160, 580161, 580162, 580163, 580164, 580165, 580166, 580167, 580168, 580169, 580170, 580171, 580172, 580173, 580174, 580175, 580176, 580177, 580178, 580179, 580180, 580181, 580182, 580183, 580184, 580185, 580186, 580187, 580188, 580191, 580192, 580193, 580194, 580195, 580196, 580197, 580198, 580199, 580200, 580201, 580202, 580203, 580204, 580205, 580206, 580207, 580208, 580209, 580210, 580211, 580212, 580213, 580214, 580215, 580216, 580217, 580218, 580219, 580220, 580221, 580222, 580223, 580224, 580225, 580226, 580227, 580228, 580229, 580230, 580231, 580232, 580233, 580234, 580235, 580236, 580237, 580238, 580239, 580240, 580241, 580242, 580243, 580244, 580245, 580246, 580247, 580248, 580249, 580250, 580251, 580252, 580253, 580254, 580255, 580256, 580257, 580258, 580259, 580260, 580261, 580262, 580263, 580264, 580265, 580266, 580267, 580268, 580269, 580270, 580271, 580272, 580273, 580274, 580275, 580276, 580277, 580278, 580279, 580280, 580281, 580282, 580283, 580284, 580285, 580286, 580287, 580288, 580289, 580290, 580291, 580292, 580293, 580294.	100%
Pickle Lake – South Limb	100831, 101396, 101525, 101526, 102692, 102906, 116721, 118004, 118221, 121656, 121657, 125050, 125051, 125052, 125053, 125760, 125761, 125762, 129676, 160810, 164956, 166176, 166304, 166305, 169680, 169681, 173060, 178291, 178314, 178995, 178996, 178997, 179657, 189146, 189147, 189148, 194187, 194210, 194211, 194935, 194936, 194937, 195563, 218371, 219081, 224876, 225586, 225587, 225588, 226523, 226524, 226525, 227088, 231687, 232868, 260845, 262197, 262198, 265588, 266276, 266277, 266278, 268320, 268321, 268322, 273549, 273550, 281607, 282260, 282261, 285637, 285770, 289638, 289639, 293068, 293069, 293146, 293147, 297669, 297670, 321676, 321677, 322315, 328186, 328833, 328834, 328835, 341207, 341208, 535546, 535547, 535548, 535549, 535550, 535551, 535552, 535553, 535554, 535555, 535556, 535557, 551427, 562023, 562024, 562025, 562026.	100%
Pickle Lake – Two Fifty	541335, 541338, 541339, 541340, 541342, 541343, 541347, 541348, 541349, 541351, 541352, 541353, 541354, 541356, 541357, 541362, 541363, 541364, 541365, 541367, 541368, 541369, 541370, 541371, 541372, 541373, 541374, 541376, 541377, 541378, 541379, 541380, 541381, 541382, 541383, 541384, 541385, 541387, 541388, 541389, 541390, 541391, 541392, 541393, 541394, 541395, 541396, 541397, 541398, 541399, 541400, 541401, 562623, 562624.	100%

Gold Projects	Tenement Number/Claim ID	Beneficial Percentage Interest
	562625, 562626, 562627, 562628, 562629, 562630, 562631, 562632, 562633, 562634, 562635, 562637, 562638, 562639, 562640, 562641, 562642, 562643, 562644, 562645, 562646, 562647.	
Pickle Lake – Two Fifty North	614611, 614612, 614613, 614614, 614615, 614616, 614617, 614618, 614619, 614620, 614621, 614622, 614623, 614624, 614625, 614626, 614627, 614628, 614629, 614630, 614631, 614632, 614633, 614634, 614635, 614636, 614637, 614638, 614639, 614640, 614641, 614642, 614643, 614644, 614645, 614646, 614647, 614648, 614649, 614650, 614651, 614652, 614653, 614654, 614655, 614656, 614657, 614658, 614659, 614660, 614661, 614662, 614663, 614664, 614665, 614666, 614667, 614668, 614669, 614670, 614671, 614672, 614673, 614674, 614675, 614676, 614677, 614678, 614679, 614680, 614681, 614682, 614683, 614684, 614685, 614686, 614687, 614688, 614689, 614690, 614691, 614692, 614693, 614694, 614695, 614696, 614697, 614698, 614699, 614700, 614701, 614702, 614703, 614704, 614705, 614706, 614707, 614708, 614709, 614710, 614711, 614712, 614713, 614714, 614715, 614716, 614717, 614718, 614719, 614720, 614721, 614722, 614723, 614724, 614725, 614726, 614727, 614728, 614729, 614730, 614731, 614732, 614733, 614734, 614735, 614736, 614737, 614738, 614739, 614740, 614741, 614742, 614743, 614744, 614745, 614746, 614747, 614748, 614749, 614750, 614751, 614752, 614753, 614754, 614755, 614756, 614757, 614758, 614759, 614760, 614761, 614762, 614763, 614764, 614765, 614766, 614767, 614768, 614769, 614770, 614771, 614772, 614773, 614774, 614775, 614776, 614777, 614778, 614779, 614780, 614781, 614782, 614783, 614784, 614785, 614786, 614787, 614788, 614789, 614790, 614791, 614792, 614793, 614794, 614795, 614796, 614797, 614798, 614799, 614800, 614801, 614802, 614803, 614804, 614805, 614806, 614807, 614808, 614809, 614810, 614811, 614812, 614813, 614814, 614815, 614816, 614817, 614818, 614819, 614820, 614821, 614822, 614823, 614824, 614825, 614826, 614827, 614828, 614829, 614830, 614831, 614832, 614833, 614834, 614835, 614836, 614837, 614838, 614839, 614840, 614841, 614842, 614843, 614844, 614845, 614846, 614847, 614848, 614849, 614850, 614851, 614852, 614853, 614854, 614855, 614856, 614857, 614858, 614859, 614860, 614861, 614862, 614863, 614864, 614865, 614866, 614867, 614868, 614869, 614870, 614871, 614872, 614873, 614874, 614875, 614876, 614877, 614878, 614879, 614880, 614881, 614882, 614883, 614884, 614885, 614886, 614887, 614888, 614889, 614890, 614891, 614892, 614893, 614894, 614895, 614896, 614897, 614898, 614899, 614900, 614901, 614902, 614903, 614904, 614905, 614906, 614907, 614908, 614909, 614910, 614911, 614912, 614913, 706353, 706354, 706355, 706356, 706357, 706358, 706359, 706365, 706366, 706367, 706368, 706369, 706370, 706371, 706372, 706373, 706374, 706375, 706376, 706377, 706378, 706379, 706380, 706381, 706382, 706383, 706384, 706385, 706386.	100%
Pickle Lake – West Pickle	104760, 104916, 104917, 104918, 104919, 104920, 105656, 105657, 120067, 120068, 126563, 128549, 128550, 138039, 139349, 147534, 147535, 147536, 155122, 155325, 165265, 171104, 171105, 171106, 171107, 173237, 173238, 176769, 184045, 187800, 191356, 191357, 199313, 199314, 199962, 207329, 227360, 227361, 236415, 239988, 248070, 248771, 248772, 250862, 256698, 256699, 266552, 267218, 267219, 273313, 285880, 285881, 287193, 293994, 295326, 295992, 300139, 303169, 306594, 316767, 316768, 320515, 323119, 325091, 325092, 333749, 333750, 333751, 335552, 336241, 336242, 338336, 345540, 345541, 345542, 345543, 541375, 541386.	100%

Graphite Projects	Tenement Number/Claim ID	Beneficial Percentage Interest
-------------------	--------------------------	--------------------------------

Pickle Lake - Manitouwadge	106808, 109041, 110086, 113625, 113626, 118723, 120303, 128662, 131666, 131972, 134369, 148355, 148356, 148357, 151037, 160975, 162102, 162103, 177448, 178748, 178749, 184310, 185993, 185994, 206507, 206508, 213679, 214769, 215274, 216286, 233311, 233312, 233313, 242045, 245488, 246007, 248870, 251308, 251595, 251596, 251597, 251598, 252658, 252659, 254326, 262718, 265818, 265819, 265820, 270688, 270689, 270690, 271714, 271715, 271716, 271717, 271718, 271719, 280111, 280112, 281804, 281805, 289867, 298697, 299651, 300011, 302379, 302380, 302381, 317648, 317649, 317650, 317651, 318725, 329071, 330634, 330635, 332614, 338507, 338508, 338509, 751443, 751444, 751445, 751446, 751447, 751448, 751449, 751450.	100%
----------------------------	---	------

2. Mining tenements acquired during the quarter and their location:

Gold Project	Tenement Number	Status	Location	Beneficial Percentage Interest
	Nil			

3. Mining tenements disposed of during the quarter and their location:

Project	Tenement Number	Status	Location	Beneficial Percentage Interest
	Nil			

4. Mining tenements amalgamated during the quarter and their location:

Gold Project	Tenement Number	Status	Location	Beneficial Percentage Interest
Kasagiminnis	198430 and 713441 to create 848611.	Complete	Kas	100%