

## MOUNT IDA LITHIUM PROSPECT – UPDATE

### HIGHLIGHTS

- **Two significant north and south well-defined Li-Cs-Rb-Be soils geochemical anomalies that were identified from the soils program, a total of ten areas of interest that were delineated by the Prospectively Index within the anomalies have been reviewed on the ground in respect to drill targeting.**
- **With further identified outcropping pegmatites in the northern and southern anomalous zones, drill positions have been revised to improve intersecting pegmatites undercover.**
- **Heritage clearance has been completed over the planned drill program areas.**
- **It is planned to commence drilling mid-November on the higher priority areas with the first results expected in December.**

Juno Minerals Limited (ASX: JNO) (**‘Juno’** or **‘the Company’**) is pleased to announce that after receipt of the soil sampling Prospectively Review, (*refer: ASX announcement “Mount Ida Lithium Prospect – Geochemical Soils Review, 11<sup>th</sup> October 2023*), the ranked priority areas were evaluated on the ground by Juno’s consulting senior geologist from BMGS out of Kalgoorlie.

Ground truthing across the anomalous areas revealed several areas of extensive pegmatite swarms.

The initial interpretation of the phase one and phase two sampling alluded to a near north-south trending source. This was confirmed for the Northern Anomaly; multiple steeply dipping and continuous pegmatites up to 400m long and 50m wide were observed hosted within foliated mafic volcanics. Outcropping pegmatites observed across the Southern Anomaly revealed multiple continuous north-west to south-east trending pegmatite dykes.

In light of the results of the ground truthing exercise, the original phase two drilling layout has been adjusted to effectively evaluate the potential for subsurface LCT development. The revised Phase 2 drill positions for the Northern and Southern anomalies are shown in Figures 4 and 5 respectively. Drilling will commence on the higher priority areas identified first with drill plans revised further dependent upon drilling outcomes.

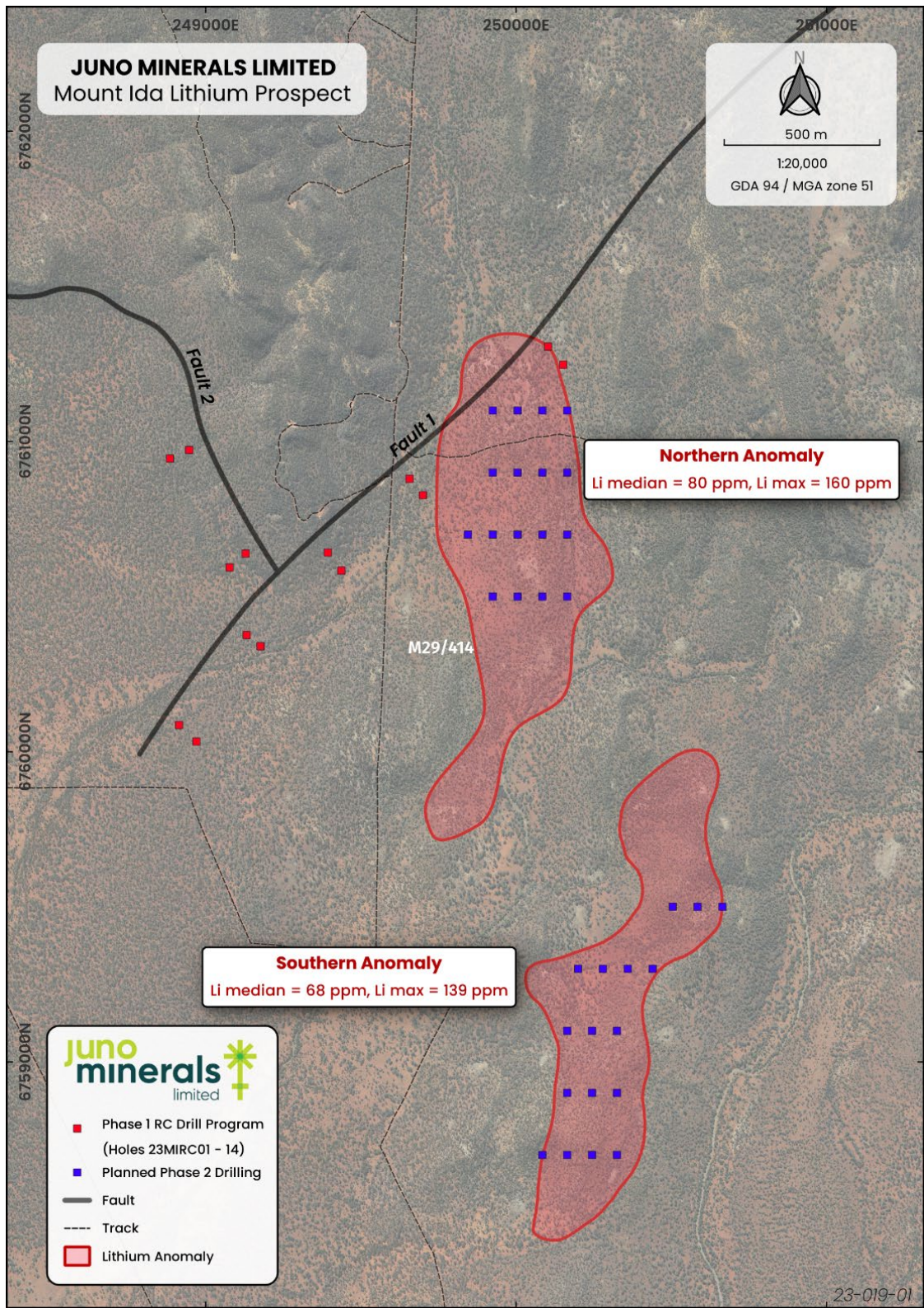


Figure 1: Geochem soil anomalies and Phase 2 initial planned RC drill holes





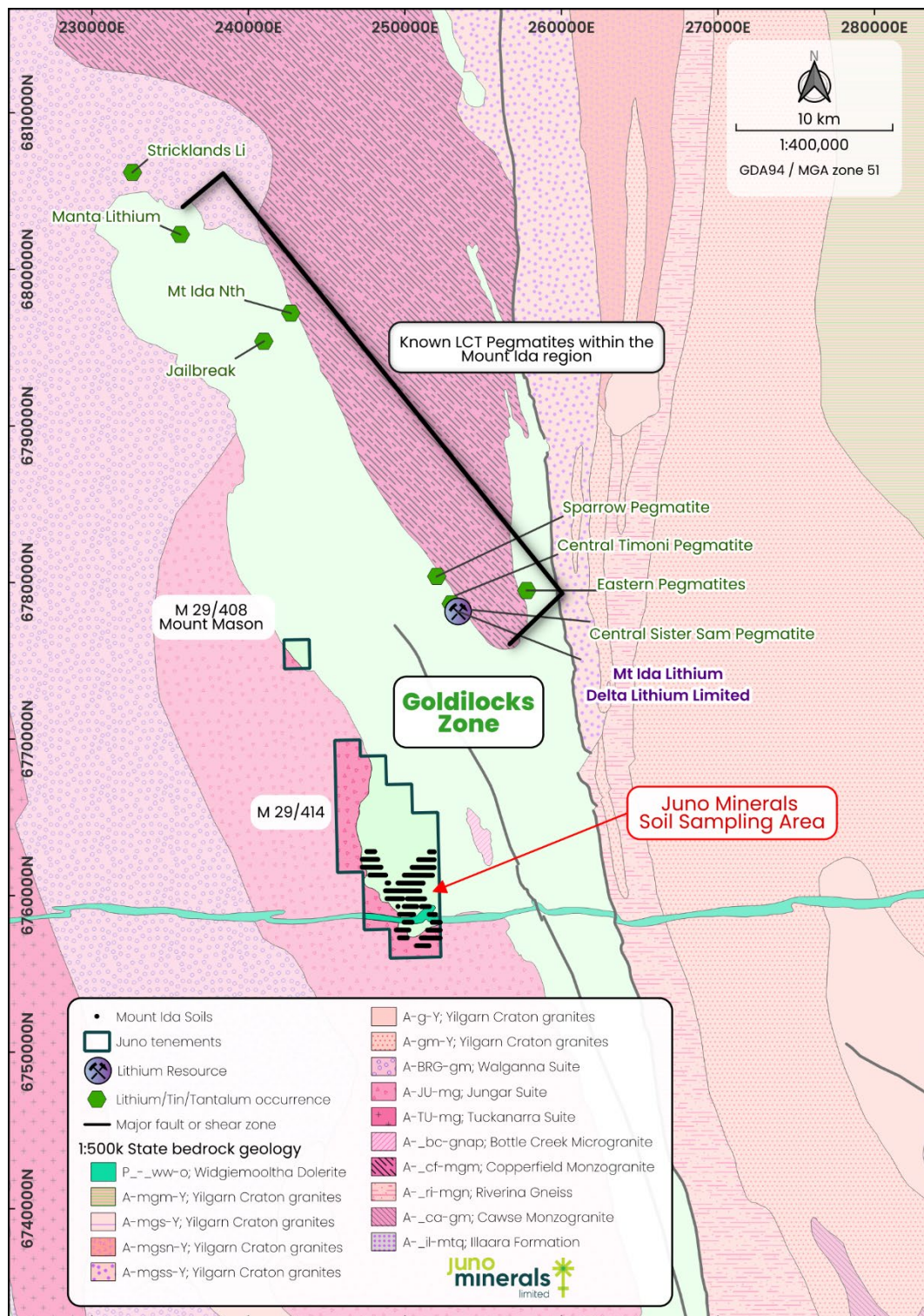


Figure 2: Known LCT Pegmatites environment – Central Yilgarn



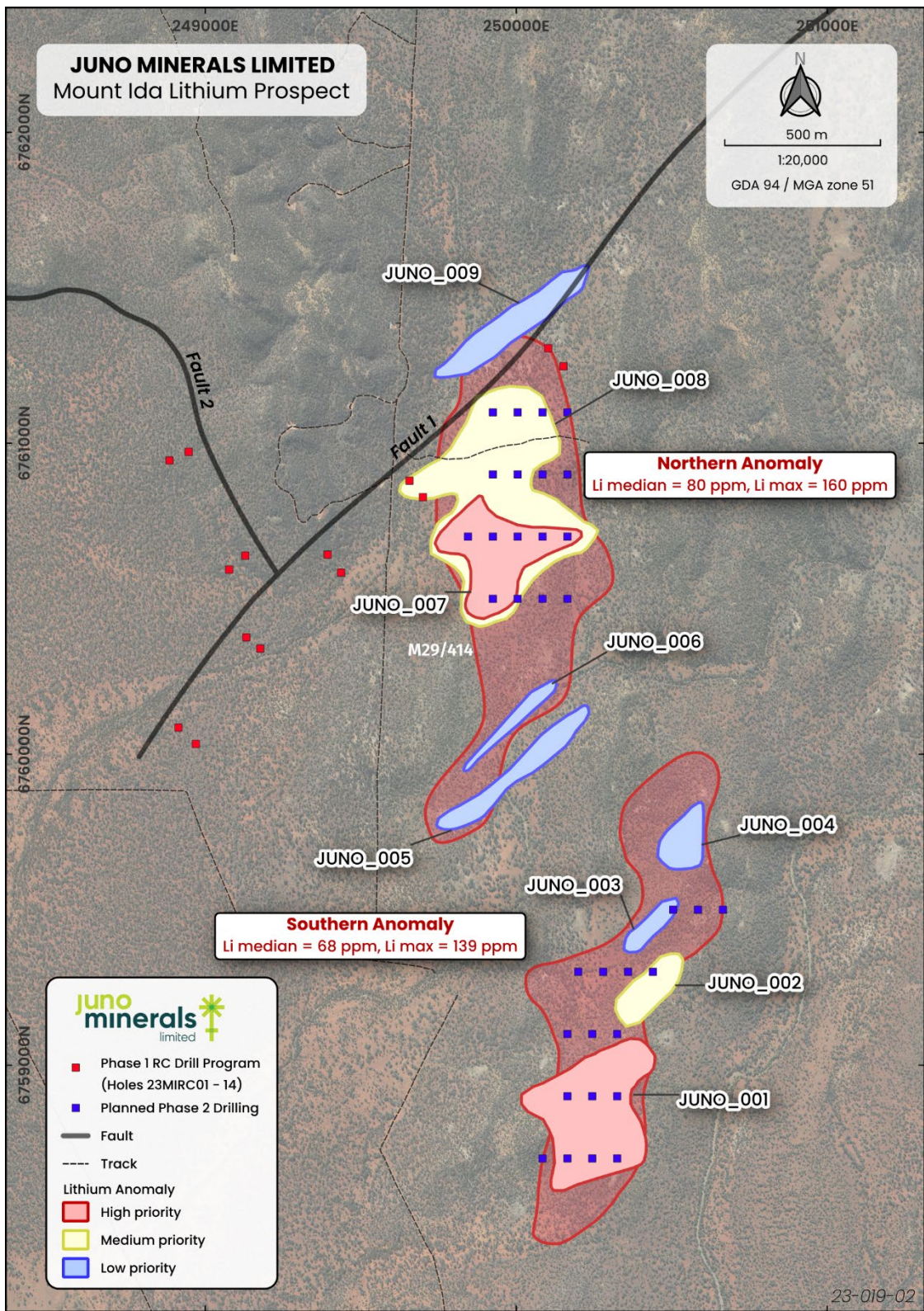


Figure 3: Geochem priority soil anomalies with initial planned Phase 2 drilling



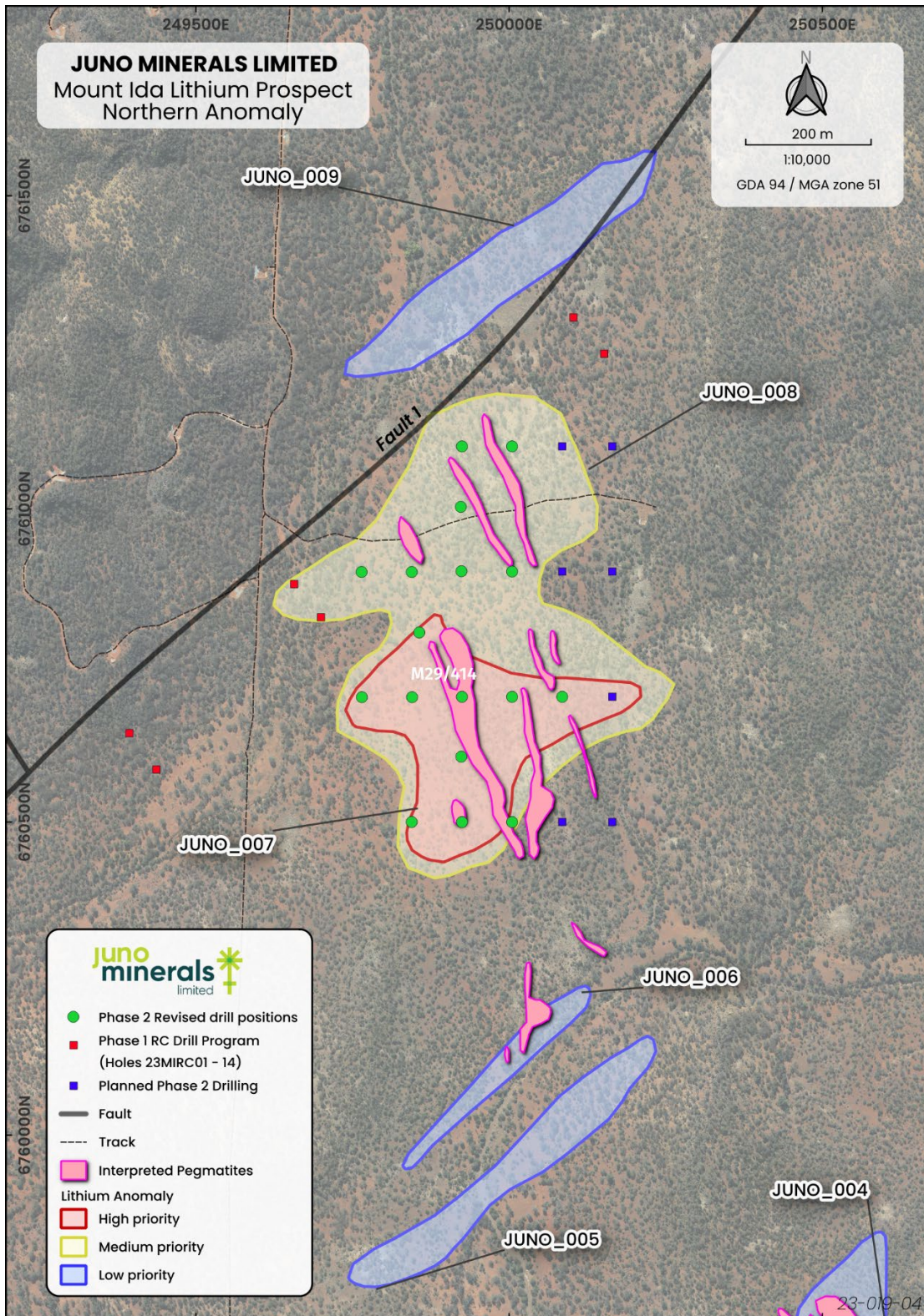


Figure 4: Northern anomaly with mapped pegmatites and revised drill positions





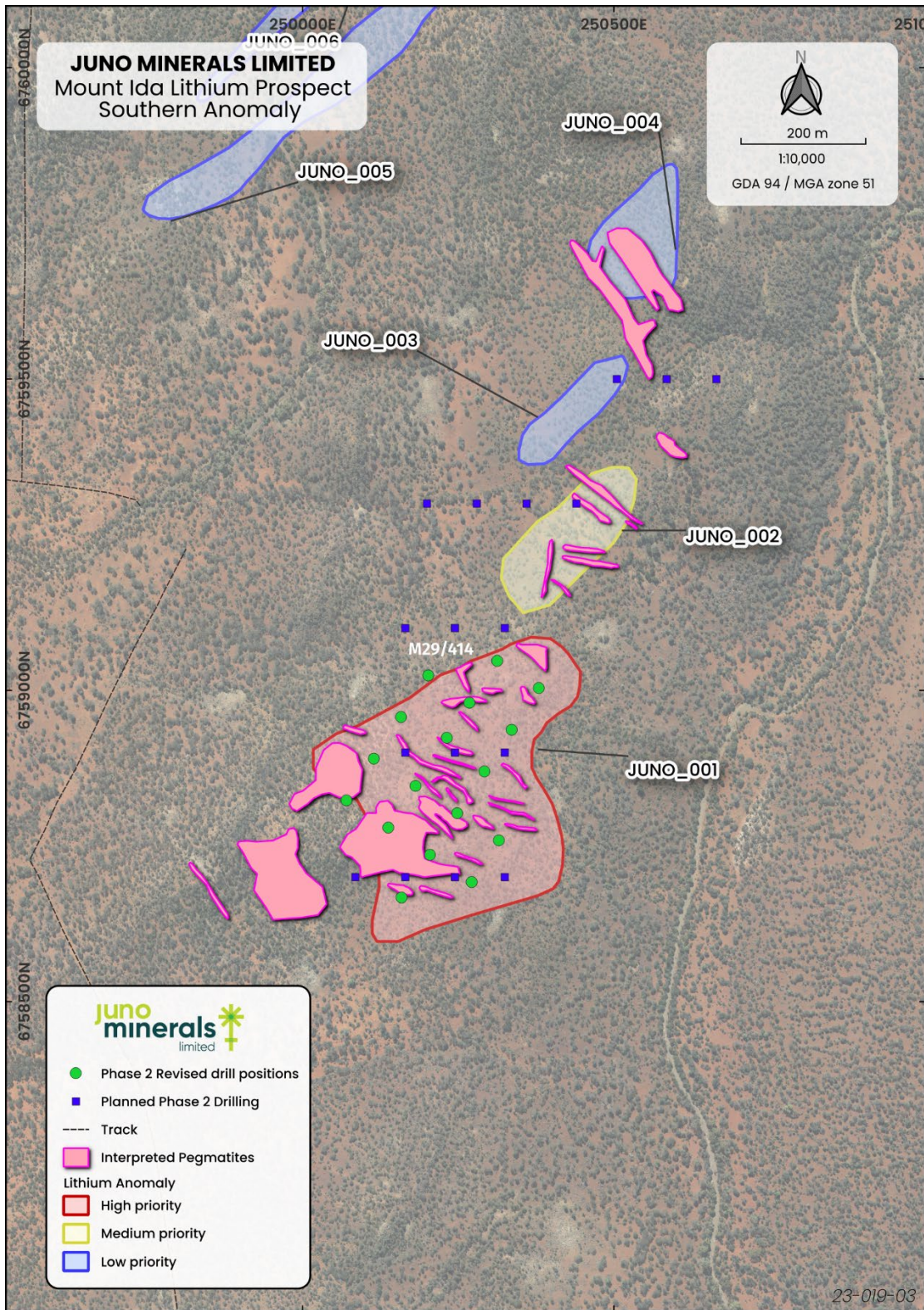


Figure 5: Southern anomaly with mapped pegmatites and revised drill positions







*Figure 6: Pegging revised drill positions targeting outcropping pegmatite*

Further recommendations from the geochemical review were to undertake additional soil sampling programs on the Mount Ida mining lease in the north of the current anomalous areas and also the Mount Mason mining lease. This will be planned after commencement of the drill program.

The lithium prospectivity on Juno's Central Yilgarn tenure is very encouraging with an immediate drilling program being planned and an expanded soil testing program and evaluation of its tenure has been recommended in an emerging lithium area of interest along the Mt Ida Fault.

This announcement has been approved for release by Greg Durack on behalf of the Board.

## **CONTACTS**

### Investor Relations

Greg Durack – Managing Director and CEO

P: + 61(0)8 9346 5599

E: [investorrelations@junominerals.com.au](mailto:investorrelations@junominerals.com.au)



## APPENDIX 1 – Juno’s Central Yilgarn Project with Mount Ida Lithium Prospect

