

Release Date: 25 October 2023

MONS PROJECT, WA

Diamond hole intersects 54m of nickel-copper sulphides from 118m

Assays pending and planning for down-hole EM already underway

- **Diamond drilling** of the 2 x MLEM Plates in Block 2 at Mons has intersected a 54m mineralised zone of massive, semi massive and disseminated sulphide mineralisation containing pyrrhotite, chalcopyrite and pyrite from 118m
- **Massive sulphide intersections** coincide with the modelled MLEM plate locations
- **Downhole electromagnetic (DHEM)** and fixed loop electromagnetic (FLEM) surveys to commence within a fortnight
- **Diamond drilling has started Block 3**, ~10km south of Block 2, to test similar modelled conductive plates

Nimy Executive Director Luke Hampson said:

“The intersection of 54m of substantial sulphide mineralisation is clearly a game-changer for Nimy. Importantly, the result is entirely consistent with the conductor plates we have modelled using geophysics.

In light of this result, we are moving quickly to do DHEM and FLEM surveys to gain further understanding of the size of the intrusive and to locate related anomalies around and below the discovered sulphide zone”.

Mineralisation styles 23NRDD008

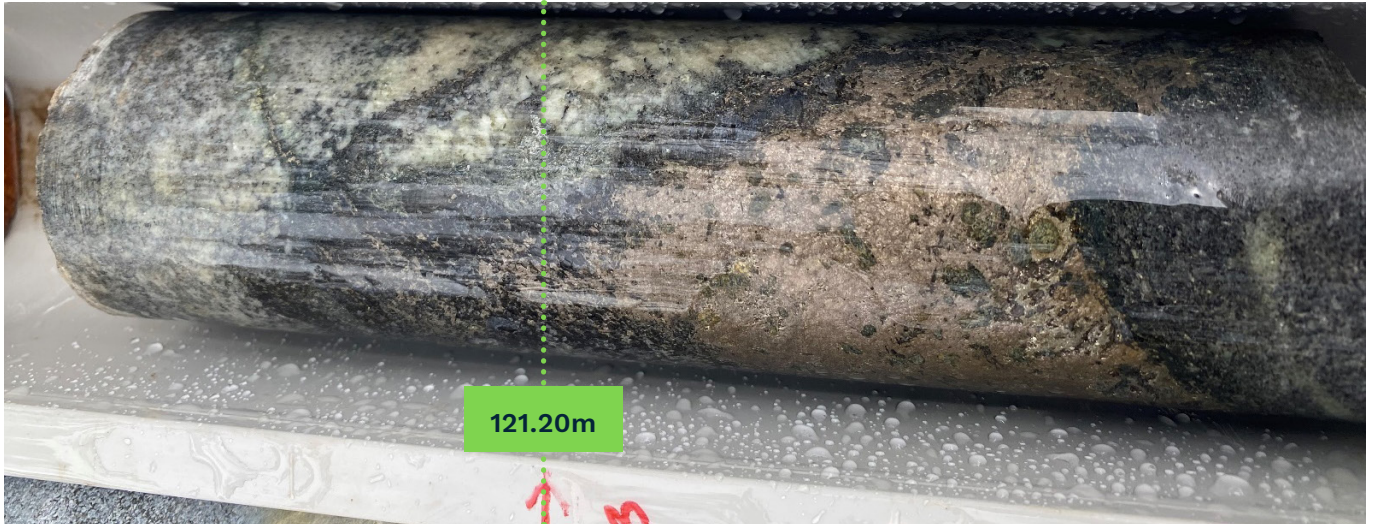


Figure 1 – Semi-massive sulphides hosted by mafic -pyrrhotite >> pyrite

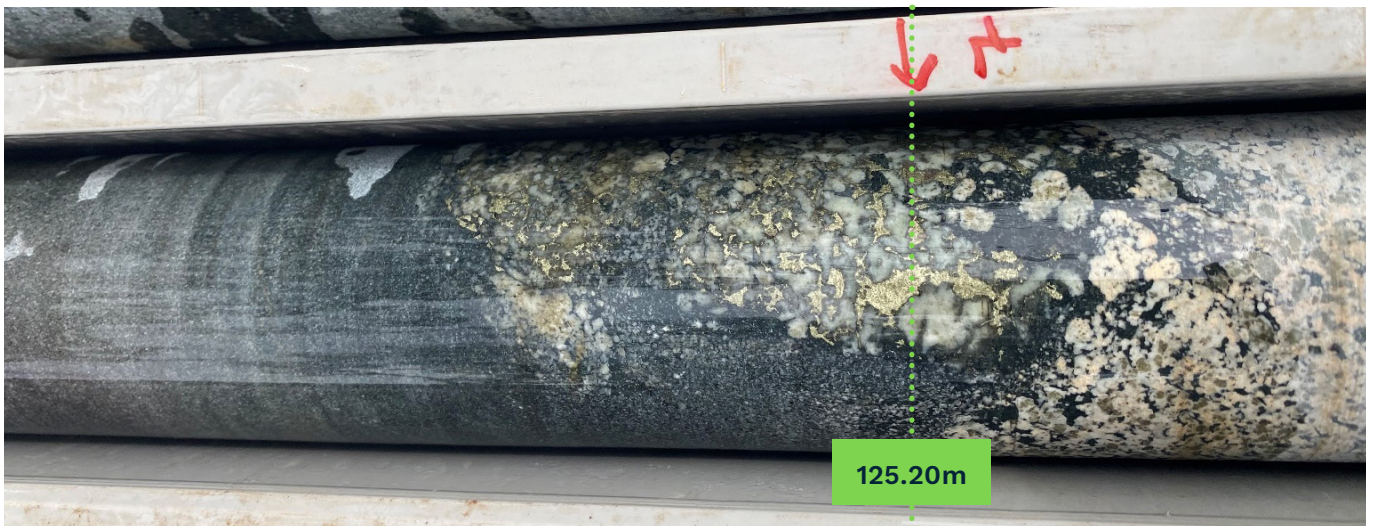


Figure 2 – Semi-massive chalcopyrite at contact of felsic and mafic rocks



Figure 3 – Chalcopyrite within massive pyrrhotite

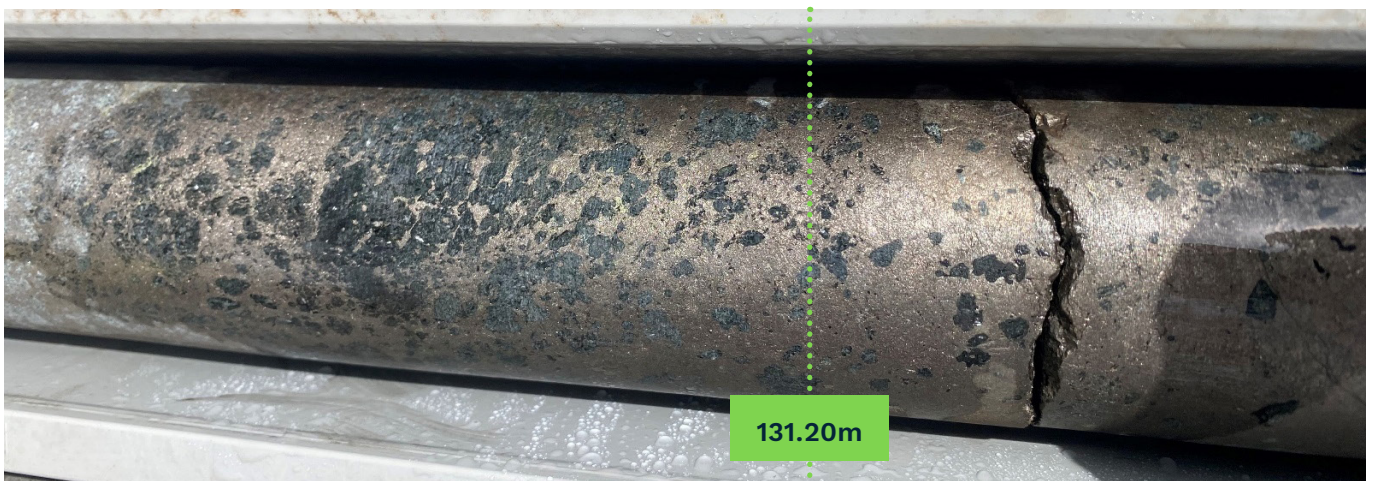


Figure 4 – Massive sulphides pyrrhotite >> pyrite >> chalcopyrite

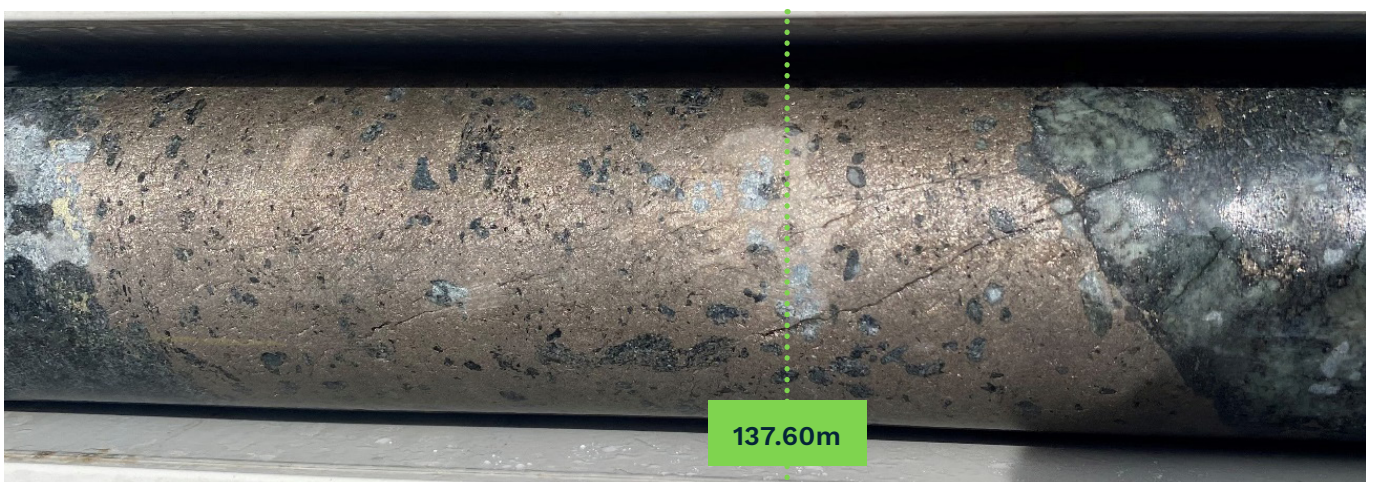


Figure 5 – Massive pyrrhotite



Figure 6 – Massive pyrrhotite >> pyrite > chalcopyrite



Figure 7 – Garnets (pyrope) in mafic with disseminated pyrite & pyrrhotite – massive pyrrhotite

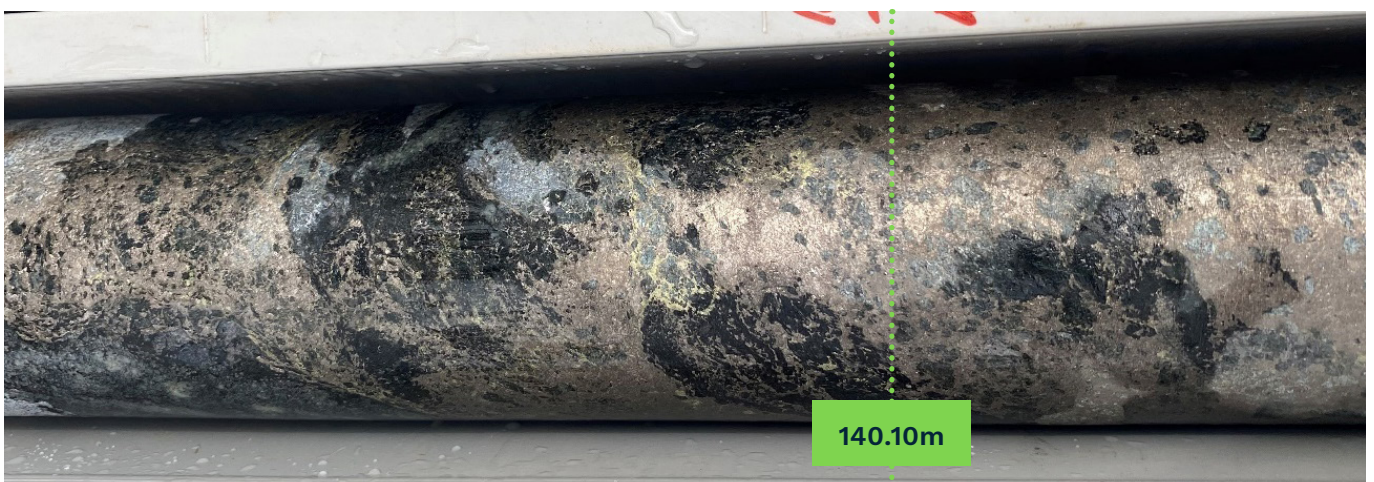


Figure 8 – Massive pyrrhotite >> chalcopyrite

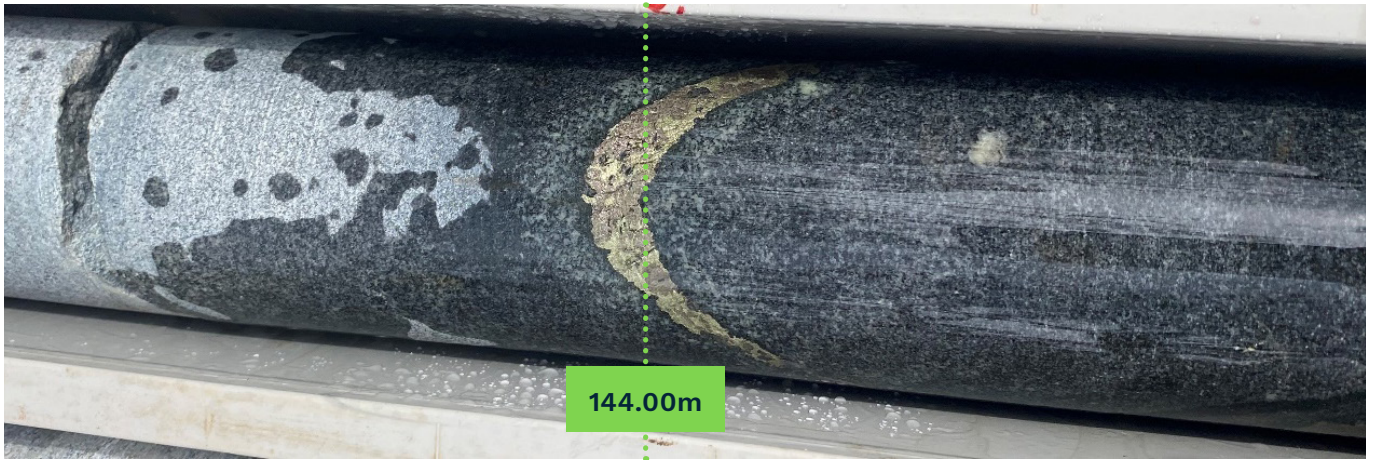


Figure 9 – Pyrrhotite- chalcopyrite vein within dolerite



Figure 10 – Semi-massive pyrrhotite within mafic

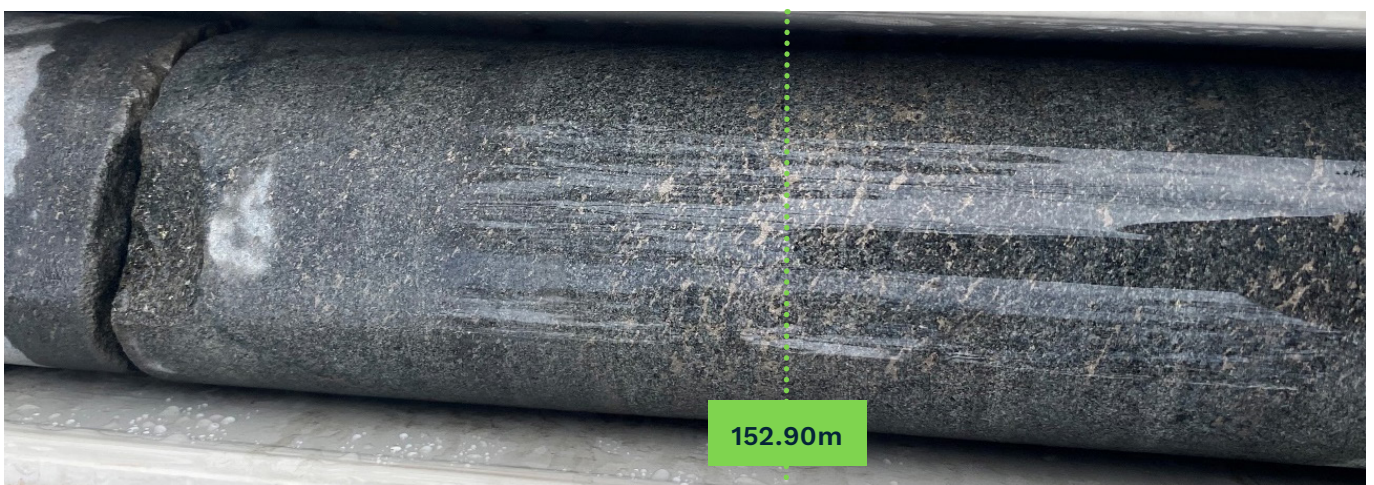


Figure 11 – Weakly foliated dolerite with disseminated pyrrhotite

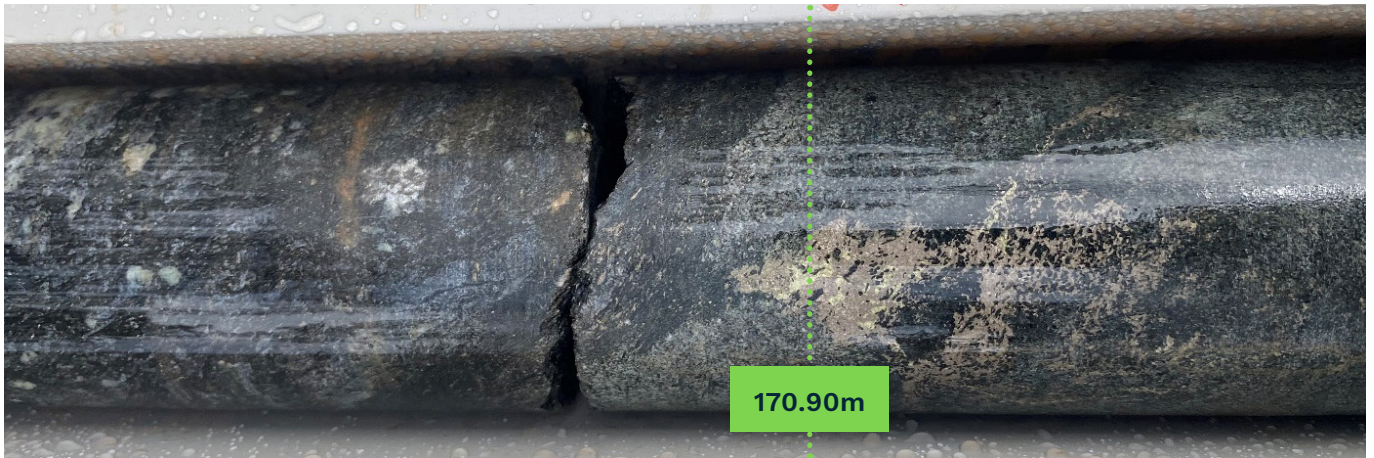


Figure 12 – Semi-massive pyrrhotite >> pyrite in dolerite

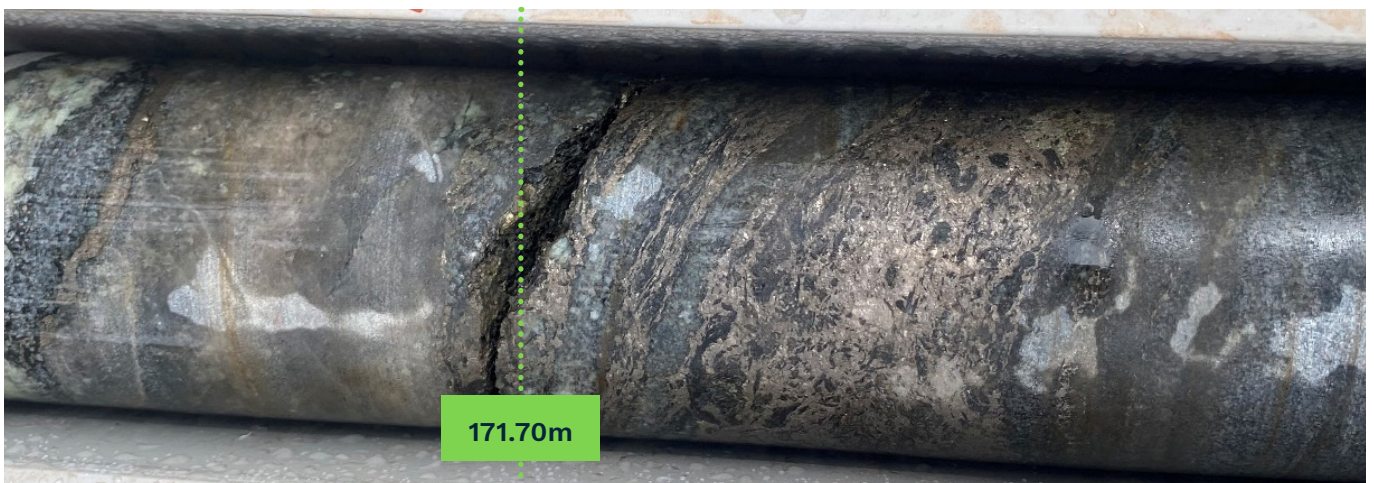


Figure 13 – Massive pyrrhotite in dolerite

23 NRDD008 Preliminary Logging - Summary						
From	To	Interval	Lithology	Mineralisation style	Sulphide Type	Total Sulphide % (Estimated)
0	2	2	Sand			
2	13	11	SAPROLITE CLAY after pegmatite			
13	55	42	Massive quartz-plagioclase-biotite PEGMATITE			
55	118	63	Alternating foliated DIORITE, GABBRO & DOLERITE			
TOP OF MINERALISATION						
118	120	2	CHLORITE SCHIST & DOLERITE with 5% disseminated po>>py	Disseminated	Pyrrhotite, Pyrite	5%
120	121	1	Foliated DOLERITE with 1% disseminated py	Disseminated	Pyrite	1%
121	123	2	SEMI-MASSIVE to MASSIVE sulphides (po>>py-cpy) hosted by mafics	Semi massive to massive	Pyrrhotite, Pyrite, Chalcopyrite	>50%
123	125	2	GRANITE - quartz-plagioclase-microcline-biotite rock. Cpy at contact	Disseminated	Chalcopyrite	<1%
125	133	8	SEMI-MASSIVE to MASSIVE sulphides (po>>py>cpy) hosted by mafics	Semi massive to massive	Pyrrhotite, Pyrite, Chalcopyrite	>50%
133	137	4	GRANITE - quartz-plagioclase-microcline-biotite rock.			
137	154	17	MASSIVE to SEMI-MASSIVE to disseminated sulphides (po>cpy>py) in mafics.	Massive, Semi massive, disseminated	Pyrrhotite, Chalcopyrite, Pyrite	>50%
154	160	6	GRANITE - quartz-plagioclase-microcline-biotite rock.			
160	170	10	Alternating DOLERITE & GABBRO with <1% disseminated po, Minor GRANITE	Disseminated	Pyrrhotite	<1%
170	172	2	SEMI-MASSIVE TO MASSIVE sulphide (po>py-cpy) veins within mafic	Semi massive to massive	Pyrrhotite, Pyrite, Chalcopyrite	>50%
BASE OF MINERALISATION (?)						
172	178	6	Mainly MICROGRANITE/DIORITE			
178	178	0	End of Hole			

Table 1 – Significant sulphide intercepts – Visual Estimates

Visual estimates of mineral abundance should never be considered a proxy or substitute for laboratory analyses where concentrations or grades are the factor of principal economic interest. Visual estimates also pyrrhotitentially provide no information regarding impurities or deleterious physical properties relevant to valuations.

Hole ID	Easting	Northing	RL	Dip	Azimuth	EOH	Type	Prospect
23NNRDD008	660572	672575	440	-60	90	178	DD	Block 2

Table 2 – Drill hole collar location

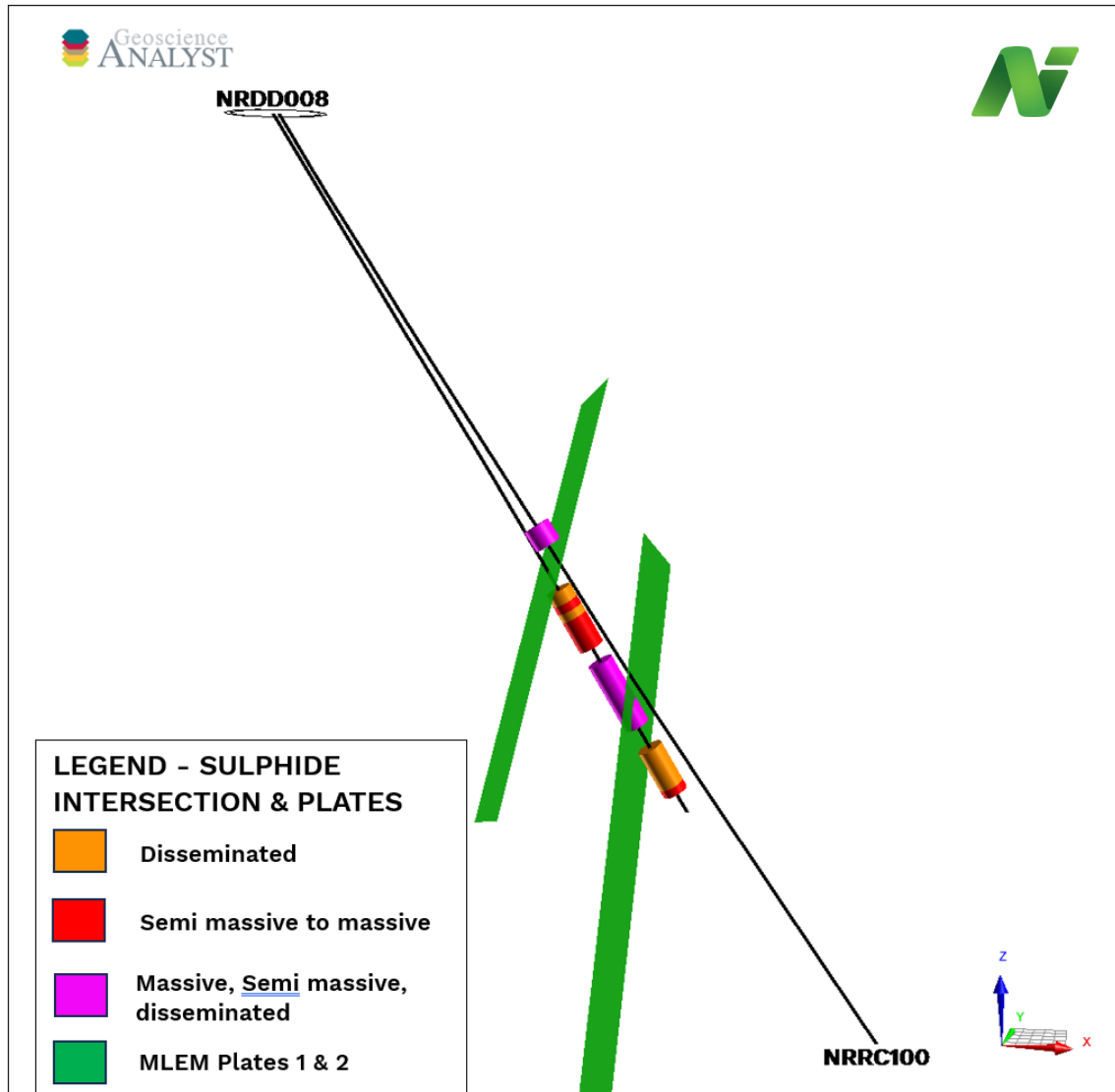


Figure 14 – Cross section of sulphide mineralisation relative to conductive plate position

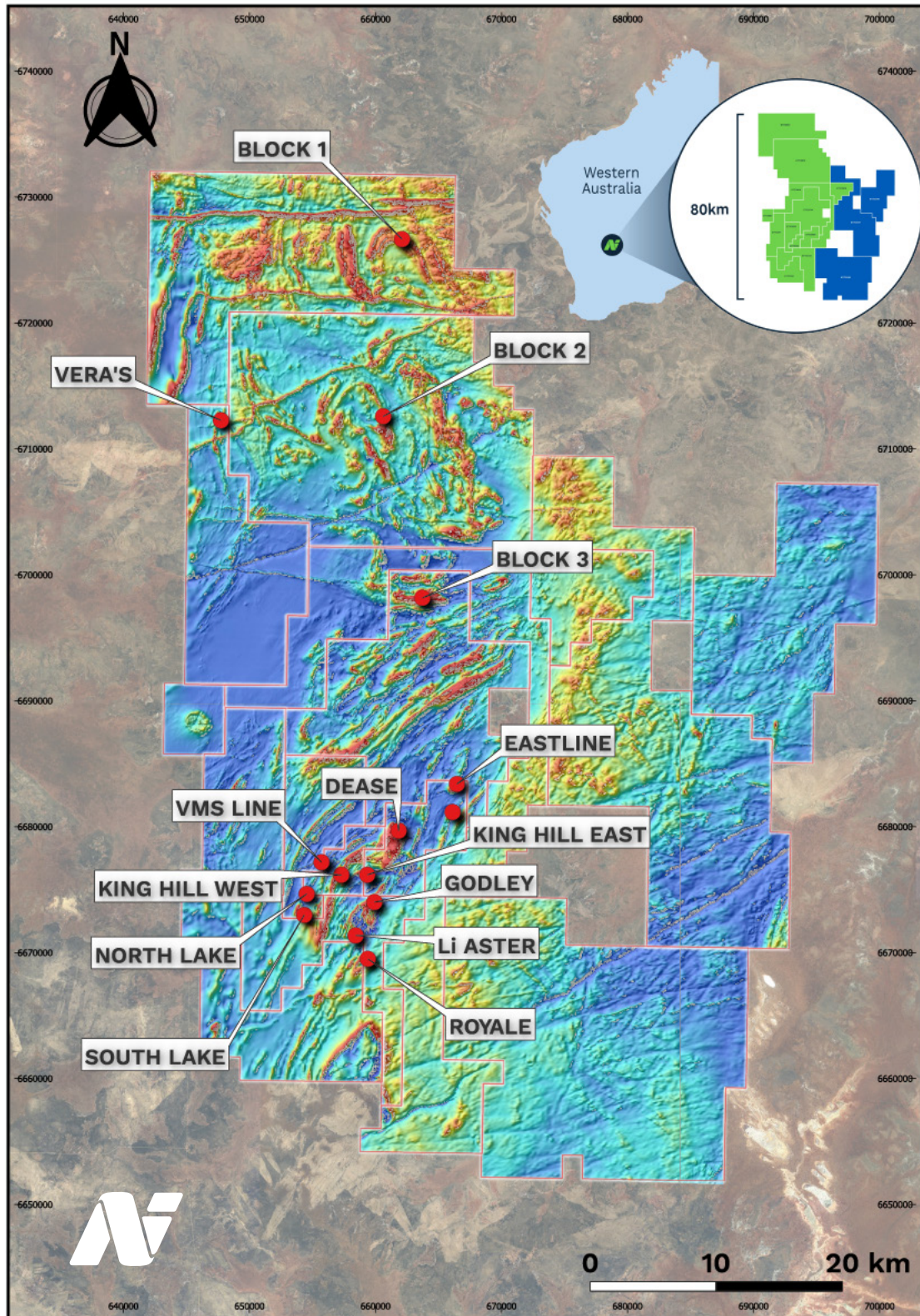


Figure 15 – Nimy tenement map - prospects over the aerial magnetics

Previous Related Announcements

17/10/23	Assays confirm nickel and copper massive sulphides discovery
03/10/23	Massive Nickel-Copper Sulphides in First Hole
14/09/23	Drilling Starts today testing Lithium and Nickel targets
27/07/23	Drilling to Commence on Priority Nickel and Lithium Targets
25/07/23	REE and Base Metal Sulphide Mineralisation
24/07/23	Assays Up to 0.73% Nickel Point to High-grade Feeder Source
19/07/23	High Conductance Plates Targeting Nickel Massive Sulphides
29/6/23	Strong Lithium Potential from Assays and Geophysical Results
08/6/23	100m Pegmatite Intersections below Lithium Soil Anomalies
26/4/23	Successful EIS application at Mons Carbonatite Prospect
29/3/23	VTEM Identifies 21 EM Anomalies at Mons (JORCS Table)
9/02/23	Drilling Campaign Commenced at Rare Earth Carbonatite
7/02/23	Soil Anomalies Confirm Nickel Sulphide Prospects
2/02/23	Soil Assays Coincident with Geophysics at Carbonatite
31/01/23	High Grade Lithium Soil Anomalies at Mons
25/01/23	EM Surveys Targeting NiS Mineralisation Commencing at Mons
24/01/23	Drill for Equity Agreement with Raglan Drilling
23/12/22	Substantial Nickel Sulphide Mineralisation Continues at Mons
19/12/22	Carbonatite Pipe Structure Intact to 1.5km
17/11/22	EM Plates modelled Targeting Nickel Sulphides
08/11/22	Carbonatite prospect targeted for Rare Earth Elements
18/10/22	Significant Nickel Assays at Dease Gossan
27/09/22	Substantial Nickel Sulphide Mineralisation at Godley
13/09/22	Nimy Completes Maiden Diamond Drill Program
08/09/22	Nimy appoints Mr Fergus Jockel as Geological Consultant
26/07/22	Drilling confirms gossan discovery
22/06/22	Drilling returns copper-silver-zinc intersection followed by 487m nickel-copper ultramafic zone
13/04/22	Semi - massive sulphides within a 438m nickel-copper zone
29/03/22	Gossan discovered at Dease. pXRF readings up to 0.96% nickel
08/02/22	Three conductive EM plates identified at Mons Nickel Project
18/11/21	Nimy Resources Prospectus and Independent Technical Assessment Report

This release has been approved for release by the Nimy Resources Board

Company Information

Nimy Resources Limited
Richard Moody
info@nimyresources.com.au
(08) 9261 4600

Investor Information

Read Corporate
Paul Armstrong
info@readcorporate.com.au
(08) 9388 1474

Nimy Resources ASX:NIM
Release Date 25 October 2023

Board and Management

Simon Lill

Non-Executive Chairman

Luke Hampson

Executive Director

Christian Price

Executive Director

Henko Vos

Secretary/CFO

Fergus Jockel

Geological Consultant

Ian Glacken

Geological Technical Advisor

Capital Structure

Shares on Issue – 136.6m

Options on Issue – 28.0m

Contact:

info@nimyresources.com.au

Competent Person’s Statement

The information contained in this report that pertain to Exploration Results, is based upon information compiled by Mr Fergus Jockel, a full-time employee of Fergus Jockel Geological Services Pty Ltd. Mr Jockel is a Member of the Australasian Institute of Mining and Metallurgy (1987) and has sufficient experience in the activity which he is undertaking to qualify as a Competent Person as defined in the December 2012 edition of the “Australasian Code for Reporting of Exploration Results, Mineral Resources and Ore Reserves” (the JORC Code). Mr Jockel consents to the inclusion in the report of the matters based upon his information in the form and context in which it appears.

Forward Looking Statement

This report contains forward looking statements concerning the projects owned by Nimy Resources Limited. Statements concerning mining reserves and resources may also be deemed to be forward looking statements in that they involve estimates based on specific assumptions. Forward-looking statements are not statements of historical fact and actual events, and results may differ materially from those described in the forward-looking statements as a result of a variety of risks, uncertainties and other factors. Forward looking statements are based on management’s beliefs, opinions and estimates as of the dates the forward-looking statements are made and no obligation is assumed to update forward looking statements if these beliefs, opinions and estimates should change or to reflect other future developments.

About Nimy Resources and the Mons Nickel Project

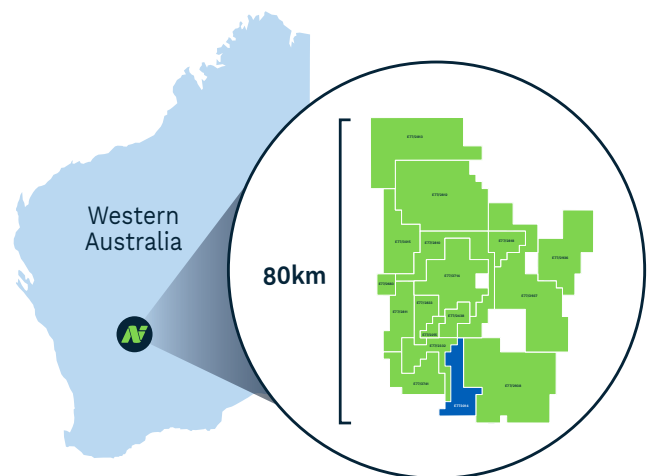
Nimy Resources is an emerging exploration company, with the vision to discover and develop critical metals for a forward-facing economy in Western Australian, a Tier 1 jurisdiction.

Nimy has prioritised the development of the Mons Project, a district scale land holding consisting of 16 approved tenements and 1 in the approval process, over an area of 2,806km² covering an 80km north/south strike of mafic and ultramafic sequences.

Mons is located 140km north - northwest of Southern Cross and covers the Karroun Hill district on the northern end of the world-famous Forrestania belt. Mons features a similar geological setting to the southern end of that belt and importantly also the Kambalda nickel belt.

The Mons Project is situated within potentially large scale fertile “Kambalda-Style” and “Mt Keith-Style” nickel rich komatiite sequences within the Murchison Domain of the Youanmi Terrane of the Archean Yilgarn Craton.

While we are primarily Nickel focused, early indications are also offering significant opportunities with other forward-facing metals, so important to the decarbonisation of our economy going forward.



JORC Code, 2012 Edition – Table 1 report template

Section 1 Sampling Techniques and Data (Criteria in this section apply to all succeeding sections)

Criteria	JORC Code Explanation	Commentary
Sampling Techniques	<ul style="list-style-type: none"> Nature and quality of sampling (e.g., cut channels, random chips, or specific specialised industry standard measurement tools appropriate to the minerals under investigation, such as down hole gamma sondes, or handheld XRF instruments, etc). These examples should not be taken as limiting the broad meaning of sampling. Include reference to measures taken to ensure sample representivity and the appropriate calibration of any measurement tools or systems used. Aspects of the determination of mineralisation that are Material to the Public Report. In cases where 'industry standard' work has been done this would be relatively simple (e.g. 'reverse circulation drilling was used to obtain 1 m samples from which 3 kg was pulverised to produce a 30 g charge for fire assay'). In other cases more explanation may be required, such as where there is coarse gold that has inherent sampling problems. Unusual commodities or mineralisation types (eg submarine nodules) may warrant disclosure of detailed information. 	<ul style="list-style-type: none"> All drilling and sampling was undertaken in an industry standard manner Core samples were collected with a diamond rig drilling mainly HQ3 diameter core. After logging and photographing, HQ3 drill core are to be cut in half, with one half sent to the laboratory for assay and the other half retained. Holes to be sampled over mineralised intervals to geological boundaries on a nominal 1m basis. The independent laboratory pulverises the entire sample for analysis as described below. Industry prepared independent standards are inserted approximately 1 in 20 samples. The independent laboratory then takes the samples which are dried, split, crushed and pulverized prior to analysis as described below. Sample sizes are considered appropriate for the material sampled. The samples are considered representative and appropriate for this type of drilling. Diamond core samples are appropriate for use in a resource estimate.
Drilling Techniques	<ul style="list-style-type: none"> Drill type (e.g. core, reverse circulation, open-hole hammer, rotary air blast, auger, Bangka, sonic, etc) and details (eg core diameter, triple or standard tube, depth of diamond tails, face-sampling bit or other type, whether core is oriented and if so, by what method, etc). 	<ul style="list-style-type: none"> Diamond core diameter is - HQ3 (61mm).
Drill Sample Recovery	<ul style="list-style-type: none"> Method of recording and assessing core and chip sample recoveries and results assessed. Measures taken to maximise sample recovery and ensure representative nature of the samples. Whether a relationship exists between sample recovery and grade and whether sample bias may have occurred due to preferential loss/gain of fine/coarse material. 	<ul style="list-style-type: none"> Core recovery is measured for each drilling run by the driller and then checked by the Company geological team during the mark up and logging process. Samples are considered representative with generally good recovery. No sample bias is observed.

Criteria	JORC Code Explanation	Commentary
Logging	<ul style="list-style-type: none"> Whether core and chip samples have been geologically and geotechnically logged to a level of detail to support appropriate Mineral Resource estimation, mining studies and metallurgical studies. Whether logging is qualitative or quantitative in nature. Core (or costean, channel, etc) photography. The total length and percentage of the relevant intersections logged. 	<ul style="list-style-type: none"> The entire hole is in the process of being geologically logged by Company geologists, with systematic sampling undertaken based on rock type and alteration observed. Diamond sample results are appropriate for use in a resource estimation, except where sample recovery is poor.
Sub-sampling techniques and sample preparation	<ul style="list-style-type: none"> If core, whether cut or sawn and whether quarter, half or all core taken. If non-core, whether riffled, tube sampled, rotary split, etc and whether sampled wet or dry. For all sample types, the nature, quality and appropriateness of the sample preparation technique. Quality control procedures adopted for all sub-sampling stages to maximise representivity of samples. Measures taken to ensure that the sampling is representative of the in situ material collected, including for instance results for field duplicate/second-half sampling. Whether sample sizes are appropriate to the grain size of the material being sampled. 	<ul style="list-style-type: none"> RC sampling was carried out by a cone splitter on the rig cyclone and drill cuttings were sampled on a 1m basis or 4m composite basis. Each sample was dried, split, crushed and pulverised. Sample sizes are considered appropriate for the material sampled. The samples are considered representative and appropriate for this type of drilling RC samples will be appropriate for use in a resource estimate.
Quality of assay data and laboratory tests	<ul style="list-style-type: none"> The nature, quality and appropriateness of the assaying and laboratory procedures used and whether the technique is considered partial or total. For geophysical tools, spectrometers, handheld XRF instruments, etc, the parameters used in determining the analysis including instrument make and model, reading times, calibrations factors applied and their derivation, etc. Nature of quality control procedures adopted (eg standards, blanks, duplicates, external laboratory checks) and whether acceptable levels of accuracy (ie lack of bias) and precision have been established. 	<ul style="list-style-type: none"> The samples are to be submitted to a commercial independent laboratory in Perth, Australia. Au, Pt Pd to be analysed by a 50g charge Fire assay fusion technique with an AAS finish and multi- elements by ICPAES and ICPMS The techniques are considered quantitative in nature. The laboratory carries out internal standards in individual batches. The standards and duplicates were considered satisfactory.

Criteria	JORC Code Explanation	Commentary
Verification of sampling and assaying	<ul style="list-style-type: none"> The verification of significant intersections by either independent or alternative company personnel. The use of twinned holes. Documentation of primary data, data entry procedures, data verification, data storage (physical and electronic) protocols. Discuss any adjustment to assay data 	<ul style="list-style-type: none"> Assays are to be submitted, results not yet received.
Location of data points	<ul style="list-style-type: none"> Accuracy and quality of surveys used to locate drill holes (collar and down-hole surveys), trenches, mine workings and other locations used in Mineral Resource estimation. Specification of the grid system used. Quality and adequacy of topographic control. 	<ul style="list-style-type: none"> Diamond drill hole collar locations are located by DGPS to an accuracy of approximately 1 metre. Locations are given in GDA94 zone 50 projection. Diagrams and location table are provided in the report. Topographic control is by detailed air photo and GPS data.
Data spacing and distribution	<ul style="list-style-type: none"> Data spacing for reporting of Exploration Results. Whether the data spacing and distribution is sufficient to establish the degree of geological and grade continuity appropriate for the Mineral Resource and Ore Reserve estimation procedure(s) and classifications applied. Whether sample compositing has been applied. 	<ul style="list-style-type: none"> Drill collar spacing was 40- 80m and was of an exploration reconnaissance nature along a drill line at 90° Azimuth. All holes have been geologically logged and provide a strong basis for geological control and continuity of mineralisation/ Data spacing and distribution of RC drilling is sufficient to provide support for the results to be used in a resource estimate.
Orientation of data in relation to geological structure	<ul style="list-style-type: none"> Whether the orientation of sampling achieves unbiased sampling of possible structures and the extent to which this is known, considering the deposit type. If the relationship between the drilling orientation and the orientation of key mineralised structures is considered to have introduced a sampling bias, this should be assessed and reported if material. 	<ul style="list-style-type: none"> The drilling is believed to be approximately perpendicular to the strike of mineralisation where known and therefore the sampling is considered representative of the mineralised zone. In some cases, drilling is not at right angles to the dip of mineralised structures and as such true widths are less than downhole widths. This is allowed for when geological interpretations are completed.
Sample security	<ul style="list-style-type: none"> The measures taken to ensure sample security. 	<ul style="list-style-type: none"> Samples were collected by company personnel and delivered direct to the laboratory.
Audits or reviews	<ul style="list-style-type: none"> The results of any audits or reviews of sampling techniques and data. 	<ul style="list-style-type: none"> No audits have been completed. Review of QAQC data by database consultants and company geologists is ongoing.

Section 2 Reporting of Exploration Resultsa (Criteria listed in the preceding section also apply to this section)

Criteria	JORC Code Explanation	Commentary
Mineral tenement and land tenure status	<ul style="list-style-type: none"> Type, reference name/number, location and ownership including agreements or material issues with third parties such as joint ventures, partnerships, overriding royalties, native title interests, historical sites, wilderness or national park and environmental settings. The security of the tenure held at the time of reporting along with any known impediments to obtaining a licence to operate in the area. 	<ul style="list-style-type: none"> E77/2812 held by Nimy Resources (ASX:NIM) or its 100% owned subsidiaries. The Mons Prospect is approximately 140km NNW of Southern Cross.
Exploration done by other parties	<ul style="list-style-type: none"> Acknowledgment and appraisal of exploration by other parties. 	<ul style="list-style-type: none"> The tenements have had low levels of surface geochemical sampling and wide spaced drilling by Image Resources (gold) with no significant mineralisation reported.
Geology	<ul style="list-style-type: none"> Deposit type, geological setting and style of mineralisation. 	<ul style="list-style-type: none"> Potential nickel sulphide, gold, platinum, VMS (Cu Zn Pb) and rare earth element mineralisation interpreted as ultramafic komatiite, mafic basalt intruded by felsic rocks – full interpretation to be completed.
Drill hole Information	<ul style="list-style-type: none"> A summary of all information material to the understanding of the exploration results including a tabulation of the following information for all Material drill holes: <ul style="list-style-type: none"> easting and northing of the drill hole collar elevation or RL (Reduced Level – elevation above sea level in metres) of the drill hole collar dip and azimuth of the hole down hole length and interception depth hole length. If the exclusion of this information is justified on the basis that the information is not Material and this exclusion does not detract from the understanding of the report, the Competent Person should clearly explain why this is the case. 	<ul style="list-style-type: none"> Drill hole location and directional information provided in the report.

Criteria	JORC Code Explanation	Commentary
Data aggregation methods	<ul style="list-style-type: none"> In reporting Exploration Results, weighting averaging techniques, maximum and/or minimum grade truncations (eg cutting of high grades) and cut-off grades are usually Material and should be stated. Where aggregate intercepts incorporate short lengths of high grade results and longer lengths of low grade results, the procedure used for such aggregation should be stated and some typical examples of such aggregations should be shown in detail. The assumptions used for any reporting of metal equivalent values should be clearly stated. 	<ul style="list-style-type: none"> Geochemical assay results pending
Relationship between mineralisation widths and intercept lengths	<ul style="list-style-type: none"> These relationships are particularly important in the reporting of Exploration Results. If the geometry of the mineralisation with respect to the drill hole angle is known, its nature should be reported. If it is not known and only the down hole lengths are reported, there should be a clear statement to this effect (eg 'down hole length, true width not known'). 	<ul style="list-style-type: none"> The drill holes are interpreted to be approximately perpendicular to the strike of mineralisation. Drilling is not always perpendicular to the dip of mineralisation and true widths are less than downhole widths. Estimates of true widths will only be possible when all results are received, and final geological interpretations have been completed.
Diagrams	<ul style="list-style-type: none"> Appropriate maps and sections (with scales) and tabulations of intercepts should be included for any significant discovery being reported These should include, but not be limited to a plan view of drill hole collar locations and appropriate sectional views. 	<ul style="list-style-type: none"> Maps / plans are provided in the report.
Balanced reporting	<ul style="list-style-type: none"> Where comprehensive reporting of all Exploration Results is not practicable, representative reporting of both low and high grades and/or widths should be practiced to avoid misleading reporting of Exploration Results. 	<ul style="list-style-type: none"> All drill collar locations are shown in figures and all significant results are provided in this report. The report is considered balanced and provided in context.
Other substantive exploration data	<ul style="list-style-type: none"> Other exploration data, if meaningful and material, should be reported including (but not limited to): geological observations; geophysical survey results; geochemical survey results; bulk samples – size and method of treatment; metallurgical test results; bulk density, groundwater, geotechnical and rock characteristics; potential deleterious or contaminating substances. 	<ul style="list-style-type: none"> Metallurgical, geotechnical and groundwater studies are considered premature at this stage of the Project.

Criteria	JORC Code Explanation	Commentary
Further work	<ul style="list-style-type: none"> The nature and scale of planned further work (eg tests for lateral extensions or depth extensions or large-scale step-out drilling). Diagrams clearly highlighting the areas of possible extensions, including the main geological interpretations and future drilling areas, provided this information is not commercially sensitive. 	<ul style="list-style-type: none"> Programs of follow up soil sampling, DHEM, MLEM and RC and diamond drilling are currently in the planning stage.