

September 2023 Quarterly Activities Report

Paradox Lithium Project, Utah, USA

- Major JORC 2012 Mineral Resource upgrade confirmed 1.504Mt of Lithium Carbonate Equivalent (LCE) and 7.61Mt of Bromine.
- Ramping up lithium carbonate production at its Sample Demonstration Plant, producing battery-grade lithium carbonate, a key step in Anson's qualification process with potential offtake partners.
- Post the September quarter, Anson completed the purchase a lithium brine project from Legacy Lithium Corp. in the Paradox Basin. The proposed strategic acquisition resulted in the Paradox Lithium Project becoming one contiguous mineralised block with an 8% increase in land area, to a total of 231.35 km².

Green River Lithium Project, Utah, USA

- Anson plans to undertake a new JORC Mineral Resource drilling program at 3 priority targets at its Green River Lithium Project. All proposals for the drilling program have been submitted.
- Anson has successfully completed the acquisition of a strategic land package of privately owned, industrial use land at the Green River and plans to locate the Project's proposed future lithium extraction and production facility at this site.
- Engineering study have confirmed suitability of a proposed site for the construction of the proposed processing plant's foundations.

Hooley Well, Western Australia

- Processing of high-resolution aeromagnetic drone survey has been successfully completed and has generated 13 Ni-Cu-PGE exploration target areas including four priority-1 targets primarily focused around major magnetic anomalies.
- Anson has defined two large Rare Earth Element (REE) targets. The REE targets exhibit a similar radiometric signature to Krakatoa Resources' Tower Project with a major REE JORC Mineral Resource estimate and Desert Metals' high-grade REE prospects, both located in close proximity to the Hooley Well Project.

Corporate

- Strong balance sheet with \$31.1 million cash on hand at the end of the quarter.

Diversified minerals development company Anson Resources Limited (ASX: ASN) (Anson, the Company) is pleased to provide the following update on its activities for the period ended 30 September 2023.

Anson has a portfolio of minerals projects in demand-driven commodities, led by its core asset, the Paradox Lithium Project (Project) in Utah, USA. It is focused on developing the Project into a significant lithium producing operation.

Paradox Lithium Project, Utah

During the quarter, Anson announced a major upgrade to its JORC Code 2012 Mineral Resource estimate, to 1.5 million tonnes of lithium carbonate equivalent (LCE) (ASX announcement 16 October 2023). This represents a major step-change increase in Anson's JORC Mineral Resource inventory at its Paradox Basin lithium assets, and a significant milestone in the development pathway of the Paradox Lithium Project.

The Mineral Resource upgrade comes after the Company advises it has successfully completed the acquisition of the Green Energy Lithium Project from Legacy Lithium Corporation (ASX Announcement 18 July 2023).

The Green Energy Project is strategically located immediately adjacent to the Paradox Lithium Project, and increases the project area by 8% to a total of 231.35 km². It hosts 18 historic oil and gas wells – three of which have recorded lithium values – which has enabled Anson to deliver this Mineral Resource increase without the need for further drilling.

The new, upgraded JORC Mineral Resource is;

- **1,504,237 tonnes of lithium carbonate equivalent (LCE) and 7,608,700 tonnes of bromine, including,**
 - **Indicated Resource of 366,737 tonnes of LCE and 1,910,000 tonnes of bromine; and**
 - **Inferred Resource of 1,137,500 tonnes of LCE and 5,698,700 tonnes of bromine**

A summary of the JORC Mineral Resource Estimate is presented in Table 1. Significant amounts of other minerals including Bromine (Br₂), Boron (Boric Acid, H₃BO₃) and Iodine (I₂) have also been estimated. A breakdown of the resources by aquifer is shown in Table 2. The Resource does not take into account potential replenishment of the brine zones.

The new, upgraded Mineral Resource represents a:

- **45% increase on the previously reported Lithium Mineral Resource*,**
- **44% increase on the previously reported Bromine Mineral Resource*.**

*The Previous Mineral Resource was published on 2 November 2022.

Category	Brine Volume (MI ³)	Brine Tonnes (Mt)	Li (ppm)	Br (ppm)	Contained ('000t) ¹	
					LCE	Br ₂
Indicated	4,550	562	123	3,398	367	1,910
Inferred	16,584	1,954	109	2,915	1,138	6,699
Resource	21,134	2,516	112	3,023	1,504	7,609

Table 1: Paradox Lithium Project Total JORC Mineral Resource upgraded calculation.

Horizon	Clastic Zone	Category	Brine (Mt)	Li (ppm)	Br (ppm)	Contained ('000t) ¹	
						LCE	Br ₂
CZ31	31	Indicated	57	165	2,814	50	162
CZ31	31	Inferred	92	176	2,677	86	246
CZ31 Resource			149	172	2,738	136	408
Other Clastics	17, 19, 29, 33, 43, 45, 47, 49	Indicated	194	86	3,378	89	646
Other Clastics	17, 19, 29, 33, 43, 45, 47, 49	Inferred	612	98	3,102	317	1,892
Other Clastics Resource			806	95	3,145	406	2,538
Mississippian		Indicated	310	138	3,552	228	1,103
Mississippian		Inferred	1,251	110	2,845	734	3,561
Mississippian Resource			1,561	116	2,988	962	4,664
TOTAL RESOURCE			2,516	112	3,024	1,504	7,610

Table 2: Paradox Lithium Project Mineral Resource Estimate for Clastic Zone 31, additional Clastic Zones and the Mississippian Units.

¹ Lithium is converted to lithium carbonate (Li₂CO₃) using a conversion factor of 5.32 and boron is converted to boric acid (H₃BO₃) using a conversion factor of 5.72. Rounding errors may occur.

Further Mineral Resource Expansion Potential

Anson is building a world-class JORC Mineral Resource inventory at its lithium assets in the Paradox Basin in Utah. The Big Flat Unit 2 well, within the acquired Green Energy Project, see Figure 1 for the well location, has a known historical value of 173ppm lithium for the Clastic Zone 31 horizon. The re-entry of this well, if successful, would further increase the brine tonnage based on similar thicknesses which would support either an extension of the life of mine or a possible production increase (ASX announcement, 16 October 2023).

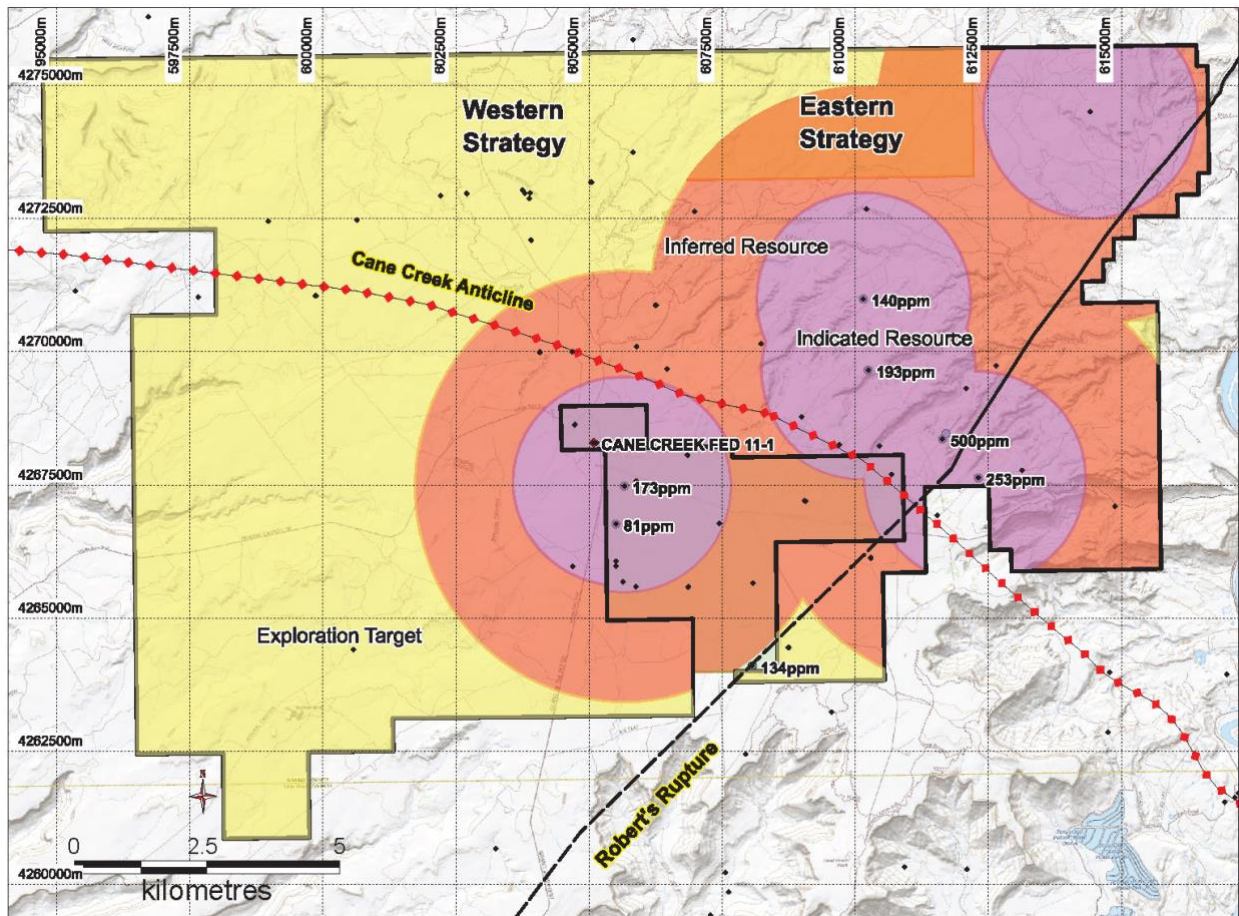


Figure 1: Plan shows the Mineral Resource classification for the Clastic Zone 31 horizon after resource upgrade.

Anson Ramps-up Lithium Carbonate Production at Demonstration Plant

Anson has ramped-up production at its demonstration plant and is now continuously producing lithium carbonate (Li_2CO_3) from brines from its Paradox Lithium Project.

The battery-grade lithium carbonate is being produced utilising the flowsheet designed by the Company's direct lithium extraction partner, Sunresin. The ramp-up of sample production enables the Company to provide samples to vehicle manufacturers and their

cathode active material partners for testing as a part of the qualification process to secure long term off-take agreements.

Project Summary:

The Paradox Lithium Project consists of 2,642 placer claims, 87 that are subject to an earn-in agreement¹ and the remainder are 100% owned by Anson² in Utah, USA. In addition, three state Potash and Mineral leases and two state industrial leases are included in the Project area¹.

Green River Lithium Project

Anson announced the completion of the acquisition of a strategic land package of privately owned, industrial use land at its Green River Lithium Project in the Paradox Basin, in south-eastern Utah, USA. All conditions for the sale and purchase have been successfully met and payment of USD2.4 million was made during the quarter. The title for the property has been transferred to Anson, and the transaction recorded by both the Grand and Emery counties.

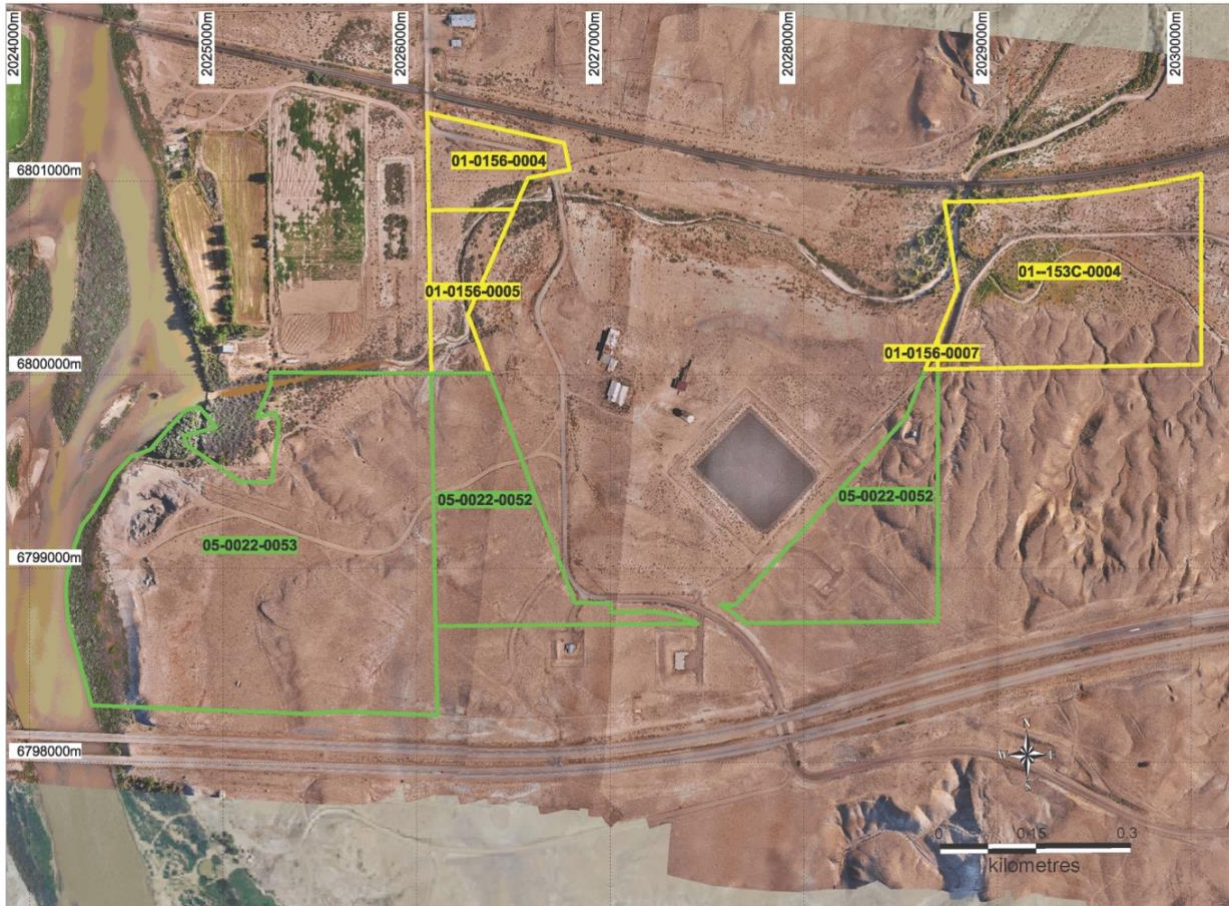


Figure 2: The privately owned, industrial use land acquired by Anson at Green River - showing the six individual land parcels.

¹ Anson commenced with a 10% interest in these 87 claims which increased to 50% from the work done, and may be subject to finalisation under the terms of the agreement to earn-into the ULI Project

² 65 claims owned by Anson may be subject to area of interest provisions of the agreement to earn-into the ULI Project.

Anson has confirmed the location for its proposed processing plant site at its Green River Lithium Project, after the Company completed a detailed geotechnical engineering study over the project area, which delivered highly positive outcomes and helps reaffirm the Project's development potential (ASX announcement, 6 October 2023).

The confirmation of the processing plant site being suitable for the construction of the proposed processing plant's foundations represents a key milestone in Anson's development plans for the Green River Project. The engineering study was undertaken by independent engineering and geological consultants as part of Anson's due diligence process for its recently completed acquisition of an industrial-use land package at Green River.

Anson plans for a new JORC Mineral Resource drilling program at priority targets at the Green River Project (ASX announcement, 2 October 2023) (Figure 3).

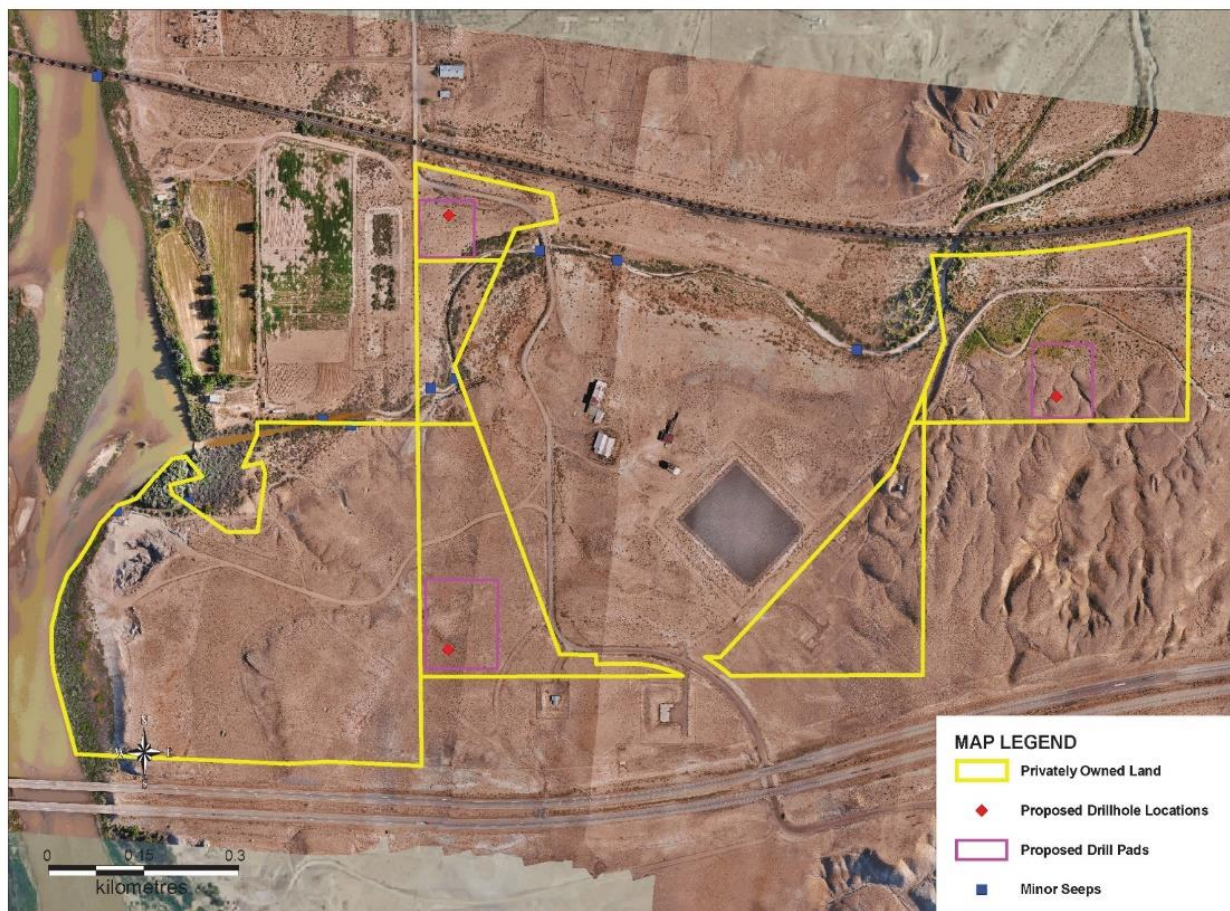


Figure 3: Plan showing the proposed drillhole locations on the privately owned Green River property.

This drilling represents the second phase of Anson's JORC Mineral Resource definition strategy at Green River, and is designed to add additional Resources to those planned to be defined from the Company's proposed re-entry drilling program at existing oil and gas wells

(ASX announcements, 13 March and 26 September 2023).

The new Mineral Resource drilling program aims to drill to a total vertical depth (TVD) of 10,800 feet to sample the Mississippian units and Clastic Zones. It has been recorded that both the Clastic Zones and the Mississippian units contain supersaturated brines, but no assaying for lithium has been carried out to date.

Anson has submitted three Notice of Intent's (NOI) to the Utah Division of Oil, Gas and Mining (UDOGM), Minerals Division covering the three drill targets for the planned new drilling program. In addition, it has also submitted a requisite Application Permit to Drill (APD) to UDOGM due to the planned depths of the wells - drilling is planned to a total vertical depth of approximately 3,292 meters (10,800 feet) to sample both the Mississippian units and Clastic Zones.

Yellow Cat Vanadium / Uranium Project

The Yellow Cat project is located 30 km north of Moab, in the Thompson District, Grand County Utah. There are two separate areas: the Yellow Cat and the Yellow Cat West claims.

The Yellow Cat project is considered prospective for the development of both uranium and vanadium due to the high historic grade mineralisation present on the claims. The project is located in a region that is increasingly sought-after by companies exploring for uranium.

UV1 Minerals LLC, a wholly owned Utah based subsidiary of Anson, has accelerated its exploration drilling program after consolidating the 8.5km interpreted uranium mineralised trend across the project.

UV1 Minerals is preparing to carry out environmental and cultural surveys to submit a Notice of Intent to Utah Division of Oil, Gas & Mining, Minerals Division and a Plan of Operation with the USA Federal Government, Bureau of Land Management to drill and sample the uranium and vanadium rich mineralised zones at the Yellow Cat prospect.

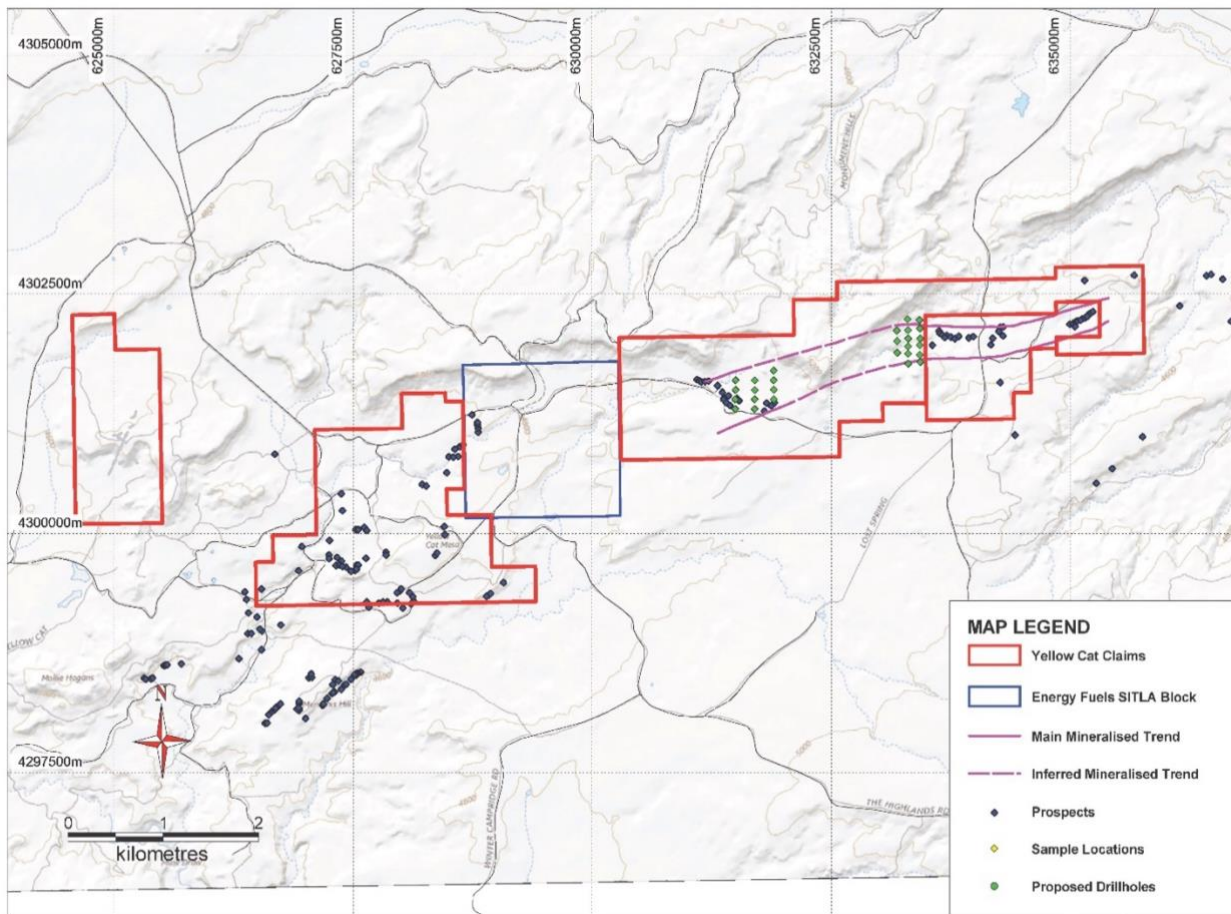


Figure 4: Plan showing the proposed exploration program within the U and V mineralized trend at the Yellow Cat Project.

Future exploration activities will include geophysical logging of the numerous open exploration drill holes to confirm historic uranium assays and to correlate with historic gamma ray values. In addition to the planned vertical drilling program from surface it is possible to use underground horizontal drill holes (“backpack” drill or similar) to test continuity of mineralisation.

The Ajana Project

The Ajana Project is located in Northampton, Western Australia, a proven and established mining province for zinc, lead and silver. The Project is adjacent to the North West Coastal Highway and 130km north of Geraldton. Historical exploration in the area has concentrated on the search for lead and zinc deposits. The prospective ground on the tenements E66/89 and E66/94 is dominated by the Northampton Metamorphic Complex.

The Ajana Project contains several historic copper, lead and silver producing mines that

date back to 1850.

Anson is planning to commence drilling at its Ajana Project in the next quarter. The exploration program is targeting the highly prospective Pb-Zn-Cu-Ag mineralised areas. The initial targets will be the high-grade Ethel Maude prospect, see Figure 5, and the Surprise historical workings, see *ASX Announcement 28 September, 2020*.

The proposed exploration programs will consist of reverse circulation (RC) drilling under and along strike of existing pits and mine shafts in the areas approved for exploration in the POW's.

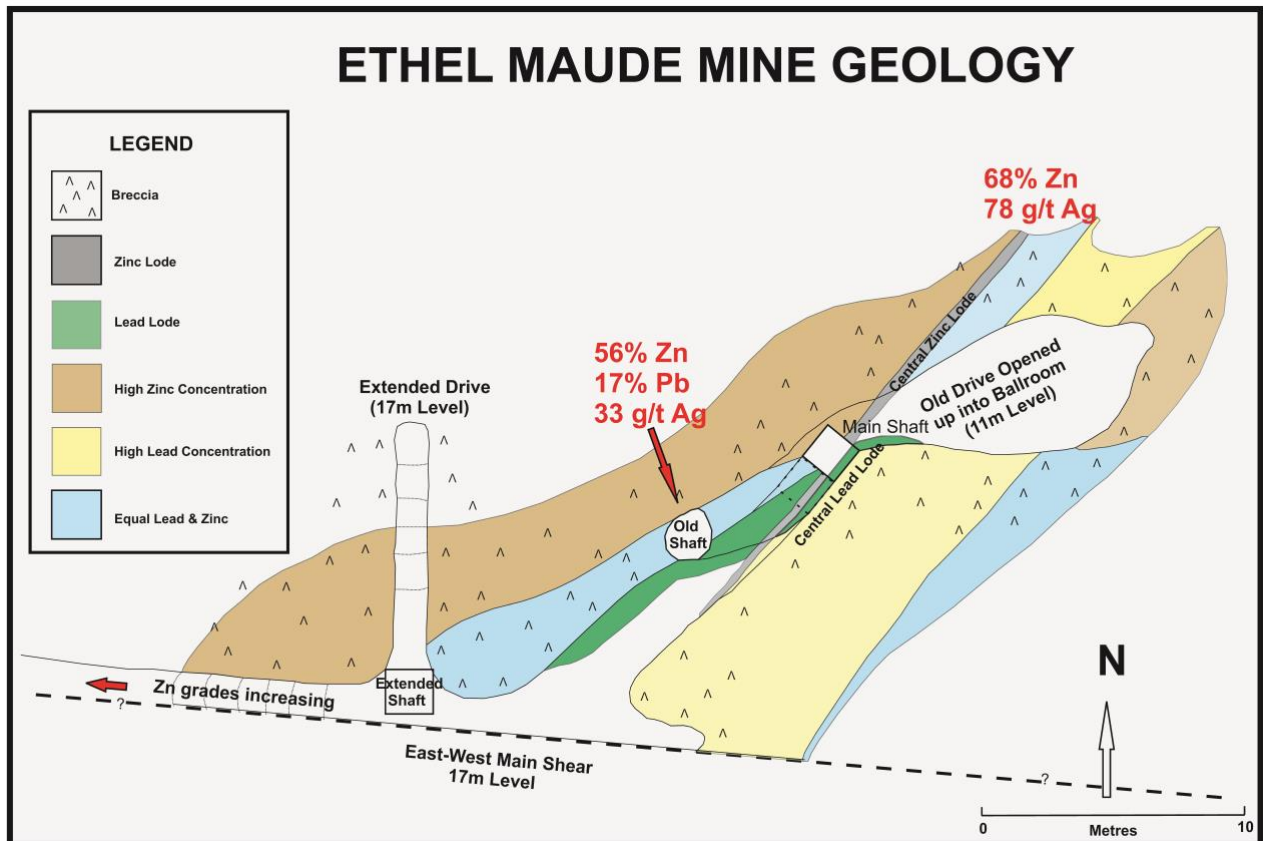


Figure 5: Plan showing the mineralized zones at the Ethel Maude prospect.

The Mary Springs tenement contains a JORC 2012 Mineral Resource estimate which is summarised in Table 3. The global Indicated and Inferred Resource estimate is 390,000 tonnes grading at 6.5% Pb. Zones of Pb-Zn-Cu-Ag rich mineralisation have been intersected in recent drilling but were not included in modelling the resource. Further drilling may enable the zinc, copper and silver bearing zones to be modelled as part of a future resource.

Category	Indicated			Inferred			Total		
	BCM	Tonnes	% Pb	BCM	Tonnes	% Pb	BCM	Tonnes	% Pb
+ 1% Pb	80,000	240,000	6.6	50,000	150,000	6.2	130,000	390,000	6.5

Table 3: Mary Springs Mineral Resource Estimate, JORC 2012.

Hooley Well Cobalt-Nickel Laterite Project

The Hooley Well Nickel-Cobalt Laterite Project is located 800km north of Perth and 300km north-east of Geraldton in Western Australia consisting of three tenements E9/2218, E9/2219 and E9/2462. Tenements E9/2218 and E9/2219 contain historical shallow drilling which has intersected nickel and cobalt laterites. There are also possible primary nickel sulphides (identified by IP response) at depth.

Anson has defined 13 new nickel-copper-platinum group elements (PGE) exploration targets at its Hooley Well Project (Figure 6) (ASX announcement 29 September 2023).

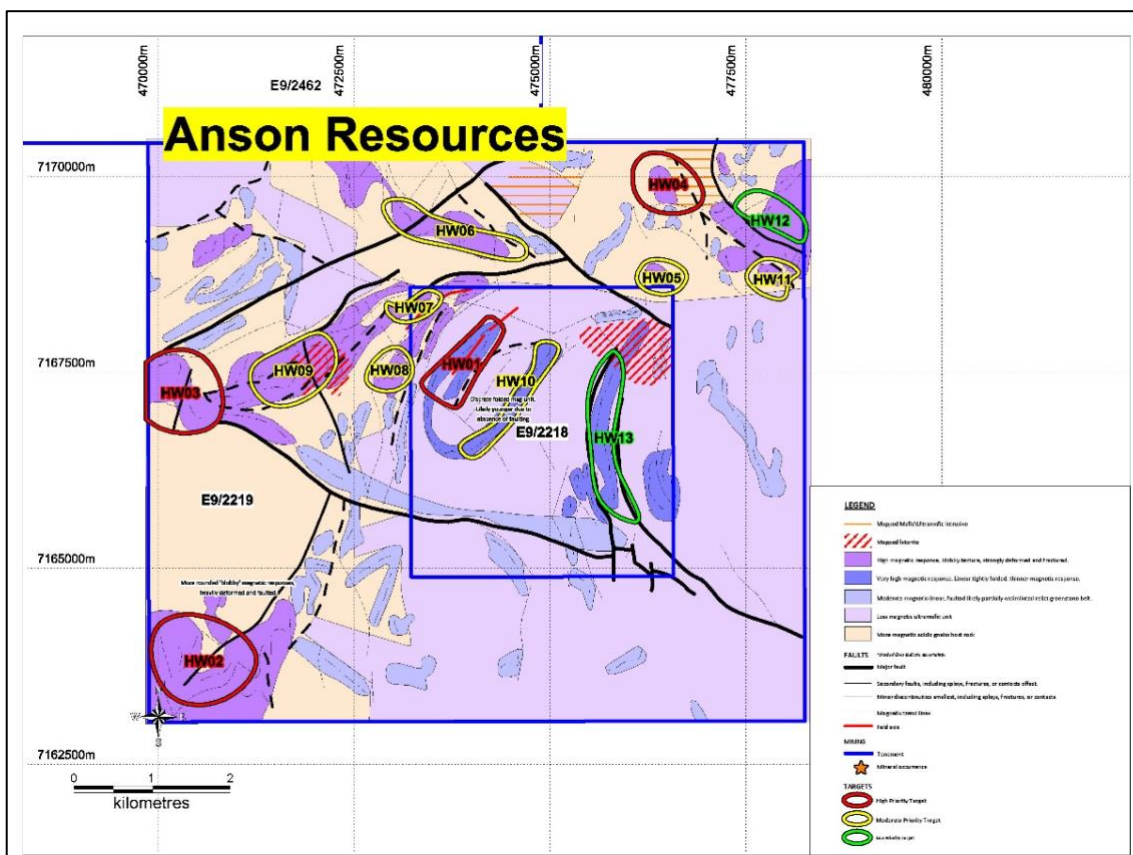


Figure 6: Plan showing the Ni-Cu-PGE anomalies overlaying the geological and structural interpretation.

The four Priority 1 areas are primarily focused around major magnetic anomalies, and previous RAB drilling has highlighted a large nickel laterite anomaly throughout the centre of the project area.

ID	Easting	Northing	Commodity	Description
HW01	473,883	7,167,633	Ni-Cu-PGE	Fold nose with strong magnetic response at the point (appears less deformed and located within an area of Ni anomalism)
HW02	470,632	7,163,817	Ni-Cu-PGE	Demagnetised zone along a secondary fault (surrounded by a strong magnetic anomaly)
HW03	470,300	7,167,304	Ni-Cu-PGE	Strong linear magnetic anomaly along a major fault and offset by a secondary northerly striking fault
HW04	476,530	7,169,940	Ni-Cu-PGE	Discrete rounded magnetic anomaly (adjacent to two minor faults)

Table 4: Summary of the Priority 1 target areas at the Hooley Well project.

These priority targets will be the focus of the Company's next phase of exploration at Hooley Well, which is planned to commence in the near future. Further details on the planned program and timeframes will be provide in due course.

Post the September quarter, Anson announced that is has defined two large, Rare Earth Element (REE) priority exploration targets at its Hooley Well Project following completion of reprocessing of historical radiometric surveys over the Project area (Figure 7) (ASX announcement 11 October 2023).

The new REE targets further enhance the multi-commodity exploration potential of the Hooley Well Project and will be a focus of Anson's next phase of exploration at the Project. This is planned to commence in the current quarter, with drilling to be undertaken upon securing of requisite approvals. Further details on the planned program will be provided in due course.

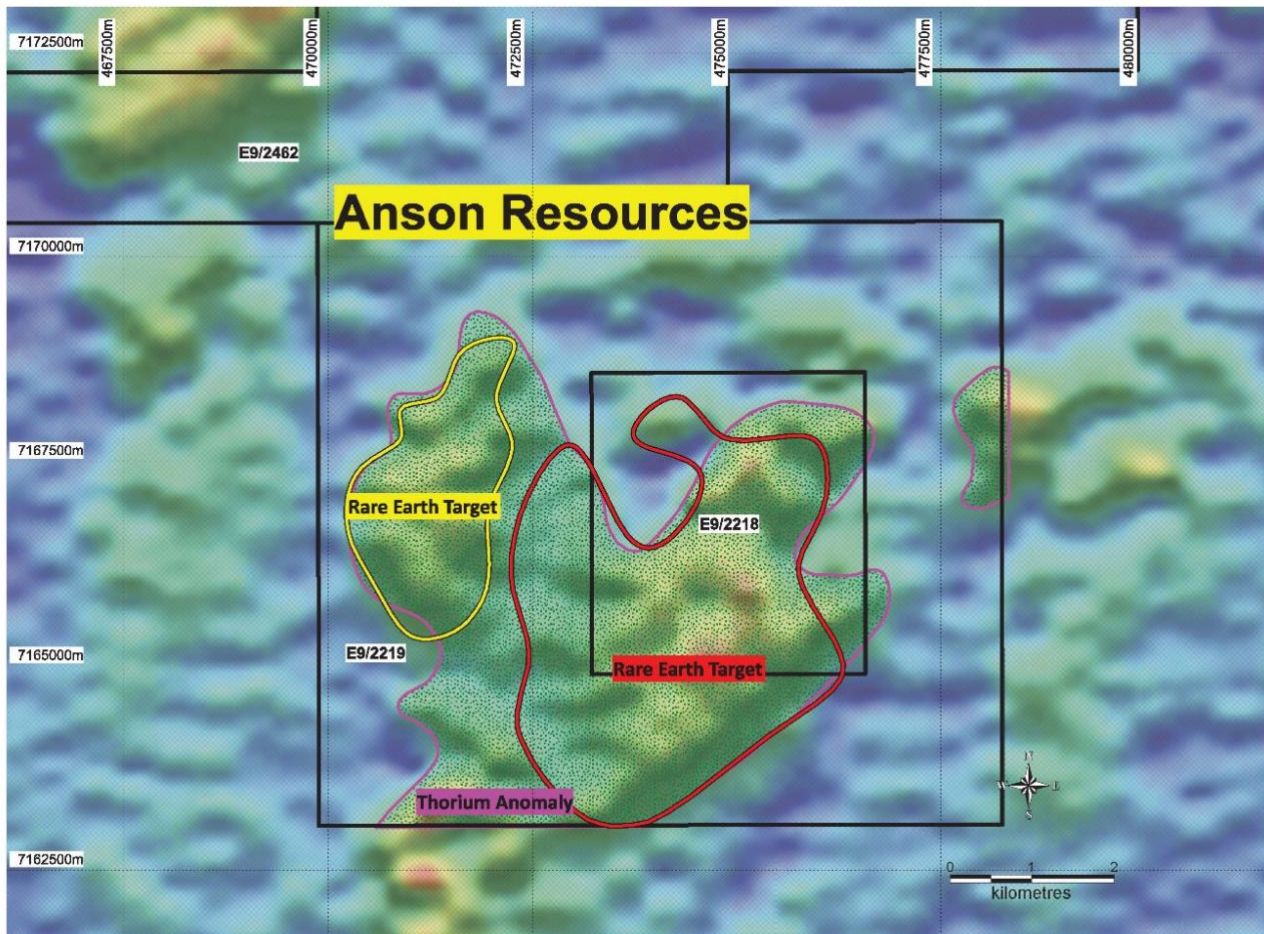


Figure 7: Plan showing the REE target priorities overlaying thorium imagery and structural interpretation.

Bull Nickel-Copper-PGE Project

The Bull Project is located only 35km from Perth abutting Chalice Gold Mines Limited's (Chalice) (ASX: CHN) tenements and is 20km south-west along strike of Chalice's high-grade Julimar Ni- Cu-PGE discovery. Anson is still awaiting the granting of ELA0/5619 tenement that abuts the Bull Project area to the south.

Negotiations continued with the landowners in which drilling exploration programs are planned with staff confirming the location of the drill holes that would result in the least amount of disturbance possible. Priority drill targets were defined based on geophysical surveys and geological mapping. The stage 1 drilling program consists of 18 holes focusing on priority areas 1, 2 and 3, and will be drilled to a depth of 200m from west to east at a 60° angle to maximize potential intersection of the targeted anomalous ultramafic units, See Figure 8.

The magnetic image interpretation in Figure 7 shows the distinct internal character of the magnetic anomaly at The Bull. Rather than a homogenous ovoid-shaped magnetic anomaly, the anomaly appears to be comprised of a series of magnetic high lenses and potential structural offsets.

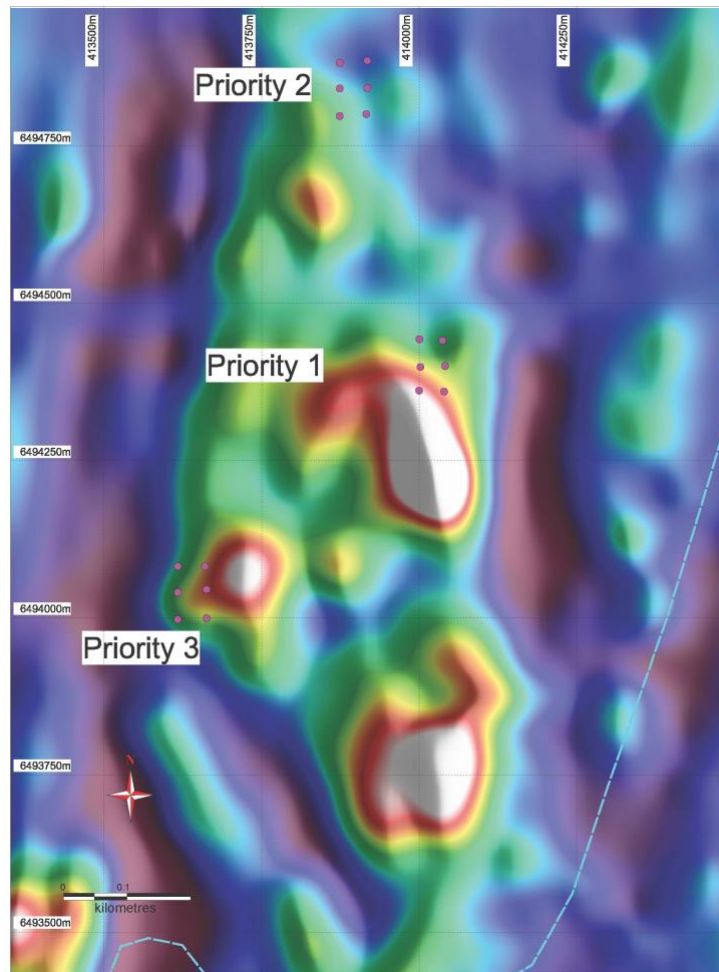


Figure 8: Drone Mage RTP image at the Bull Project showing proposed drillhole locations.

Corporate

Expenditure during the quarter:

The Appendix 5B details the expenditure during the quarter. Administration and corporate costs were \$0.6 million. In accordance with Listing Rule 5.3.1, the Company reports that there was \$6.0 million exploration and evaluation costs which were predominantly expended on the Paradox Project. Payments to related parties at section 6.1 of the Appendix 5B of \$374 thousand relate to director fees, salaries, superannuation and consulting fees.

This report has been authorised for release by the Executive Chairman and CEO.

For further information please contact:

Bruce Richardson

Executive Chairman and CEO

E: info@ansonresources.com

Ph: +61 478 491 355

www.ansonresources.com

Follow us on Twitter

@anson_ir

Media and Investor Relations

James Moses, Mandate Corporate

E: james@mandatecorporate.com.au

Ph: +61 420 991 574

Forward Looking Statements: Statements regarding plans with respect to Anson's mineral projects are forward looking statements. There can be no assurance that Anson's plans for development of its projects will proceed as expected and there can be no assurance that Anson will be able to confirm the presence of mineral deposits, that mineralisation may prove to be economic or that a project will be developed.

Competent Person's Statement 1: The information in this report that relates to exploration results; exploration target, Mineral Resources and geology is based on information compiled and/or reviewed by Mr Greg Knox, a member in good standing of the Australasian Institute of Mining and Metallurgy. Mr Knox is a geologist who has sufficient experience which is relevant to the style of mineralisation under consideration and to the activity being undertaken to qualify as a "Competent Person", as defined in the 2012 Edition of the Australasian Code for Reporting of Exploration Results, Mineral Resources and Ore Reserves and consents to the inclusion in this report of the matters based on information in the form and context in which they appear. Mr Knox has reviewed and validated the metallurgical data and consents to the inclusion in this Announcement of this information in the form and context in which it appears. Mr Knox is a director of Anson Resources Limited and a consultant to Anson.

Competent Person's Statement 2: The information contained in this ASX release relating to Exploration Results and Mineral Resource Estimates has been prepared by Mr Richard Maddocks, MSc in Mineral Economics, BSc in Geology and Grad Dip in Applied Finance. Mr Maddocks is a Fellow of the Australasian Institute of Mining and Metallurgy (111714) with over 30 years of experience. Mr Maddocks has sufficient experience that is relevant to the style of mineralisation and type of deposit under consideration and to the activity being undertaken to qualify as a competent person as defined in the 2012 edition of the Australasian Code for Reporting of Exploration Results, Mineral

Resources and Ore Reserves.

Mr Maddocks is an independent consultant to Anson Resources Ltd. Mr Maddocks consents to the inclusion in this announcement of this information in the form and context in which it appears. The information in this announcement is an accurate representation of the available data from exploration at the Paradox Lithium Project.

Competent Persons Statement 3: The information in this announcement that relates to the Exploration Results on the Yellow Cat project is based on information compiled and fairly represented by Matthew Hartmann. Mr. Hartmann is a Principal Consultant with SRK Consulting (U.S) Inc. with over 20 years of experience in mineral exploration and project evaluation. Mr. Hartmann is a Member of the Australasian Institute of Mining and Metallurgy (318271) and a Registered Member of the Society of Mining, Metallurgy and Exploration (4170350RM). Mr Hartmann has sufficient experience relevant to the style of mineralisation and type of deposit under consideration, and to the activity which has been undertaken in 2019 and 2020, to qualify as a Competent Person as defined in the 2012 Edition of the Joint Ore Reserves Committee (JORC) Australasian Code for Reporting of exploration results, Mineral Resources and Ore Reserves. Mr Hartmann provides his consent to the inclusion in this report of the matter based on this information in the form and context in which it appears.

Information is extracted from reports entitled 'Anson Obtains a Lithium Grade of 235ppm at Long Canyon No 2' created on 1 April 2019, 'Anson Estimates Exploration Target For Additional Zones' created on 12 June 2019, 'Anson Estimates Maiden JORC Mineral Resource' created on 17 June 2019, 'Anson Re-enters Skyline Well to Increase Br-Li Resource' created on 19 September 2019, 'Anson Confirms Li, Br for Additional Clastic Zones' created on 23 October 2019 and all are available to view on the ASX website under the ticker code ASN. Anson confirms that it is not aware of any new information or data that materially affects the information included in the original market announcement and, in the case of estimates of Mineral Resources or Ore Reserves, that all material assumptions and technical parameters underpinning the estimates in the relevant market announcement continue to apply and have not materially changed. Anson confirms that the form and context in which the Competent Person's findings are presented have not been materially modified from the original market announcement.

APPENDIX A: INTERESTS IN MINING TENEMENTS AS AT 30 SEPTEMBER 2023

Project	Lease	Commodity	Holder	Locality	Status
Ajana	E66/89	Graphite and base metals	Rhodes Resources Pty Ltd	Western Australia	Granted
	E66/94	Graphite and base metals	Anson Resources Limited	Western Australia	Granted
Hooley Well	E9/2218	Cobalt, nickel	Western Cobalt Pty Ltd	Western Australia	Granted
	E9/2219	Cobalt, nickel	Anson Resources Limited	Western Australia	Granted
	E9/2462	Cobalt, nickel	Anson Resources Limited	Western Australia	Granted
The Bull	E70/5420	Ni-Cu-PGE	State Exploration Pty Ltd	Western Australia	Granted
	ELA70/5619	Ni-Cu-PGE	Anson Resources Limited	Western Australia	Under Application
Paradox Brine	87 Placer Claims	Lithium	(i)	Utah, USA	(i)
Paradox Brine	155 Placer Claims	Lithium	A1 Lithium Inc	Utah, USA	(ii)
Paradox Brine	71 Placer Claims	Lithium	A1 Lithium Inc	Utah, USA	(iii)
Paradox Brine	191 Placer Claims	Lithium	A1 Lithium Inc	Utah, USA	(iv)
Paradox Brine	66 Placer Claims	Lithium	A1 Lithium Inc	Utah, USA	(v)
Paradox Brine	178 Placer Claims	Lithium	A1 Lithium Inc	Utah, USA	(vi)
Paradox Brine	334 Placer Claims	Lithium	A1 Lithium Inc	Utah, USA	(vii)
Paradox Brine	228 Placer Claims	Lithium	A1 Lithium Inc	Utah, USA	(viii)
Paradox Brine	536 Placer Claims	Lithium	A1 Lithium Inc	Utah, USA	(ix)
Paradox Brine	586 Placer Claims	Lithium	A1 Lithium Inc	Utah, USA	(x)
Paradox Brine	208 Placer Claims	Lithium	A1 Lithium Inc	Utah, USA	(xi)

Paradox Brine	3 Potash & Mineral Lease	Lithium	A1 Lithium Inc	Utah, USA	(xii)
Paradox Brine	2 Industrial Permit	Lithium	A1 Lithium Inc	Utah, USA	
Yellow Cat Project	151 Lode Claims	Vanadium and Uranium	Blackstone Resources Inc	Utah, USA	(xiii)
Green River Lithium	548 Placer Claims	Lithium	Blackstone Minerals NV LLC	Utah, USA	(xiv)
Green River Lithium	307 Placer Claims	Lithium	Blackstone Minerals NV LLC	Utah, USA	(xv)
Green River Lithium	396 Placer Claims	Lithium	Blackstone Minerals NV LLC	Utah, USA	(xvi)

- (i) Anson currently holds a 50% interest in 87 Placer Claims in Utah, USA (the ULI Project).

At the date of this Report, the holder of the remaining 50% interest had not completed the formalities to transfer the claims to the joint venture company (Paradox Lithium LLC) established for this purpose. Further, achievement of the milestones which increased Anson's interest to 50% may be subject to finalisation under the terms of the agreement to earn-into the ULI Project

These claims are referred to as ULI-13, ULI-14, ULI-14S, ULI-15, ULI15S, ULI16, ULI16S, ULI-30, ULI-31, ULI-32, ULI-33, ULI-34, ULI-35, ULI-36, ULI-37, ULI-38, ULI-39, ULI-40, ULI-41, ULI-42, ULI-43, ULI-54, ULI-55, ULI-56, ULI-57, ULI-58, ULI-59, ULI-60, ULI-60-E, ULI-61-E, ULI-62-E, ULI-63, ULI-64, ULI-64 N, ULI-65, ULI-65 W, ULI-66, ULI-67, ULI-68, ULI-69, ULI-70, ULI-71, ULI-77, ULI-78, ULI-79, ULI-80, ULI-81, ULI-81 W, ULI-82, ULI-83, ULI-84, ULI-85, ULI-86, ULI-87, ULI-88, ULI-89, ULI-90, ULI-91, ULI-92, ULI-93, ULI-93 E, ULI-94, ULI-95, ULI-96, ULI-97, ULI-97 E, ULI-98, ULI-98 N, ULI-99, ULI-100, ULI-101, ULI-102, ULI-102 N, ULI-103, ULI-104, ULI-105, ULI-105 N, ULI-106, ULI-107, ULI-107 N, ULI-108, ULI-109, ULI-110, ULI-111, ULI-112, ULI-113 and ULI-114.

- (ii) Anson currently holds a 100% interest in 155 Placer Claims in Utah, USA. Under the terms of an earn-in agreement for the ULI Project, these placer claims may be subject to area of interest provisions of the agreement to earn-into the ULI Project.

These claims are referred to as ULI201, ULI202, ULI203, ULI204, ULI205, ULI206, ULI207, ULI208, ULI209, ULI210, ULI211, ULI212, ULI213, ULI214, ULI215, ULI216, ULI217, ULI218, ULI219, ULI220, ULI225, ULI226, ULI227, ULI228, ULI229, ULI230, ULI231, ULI232, ULI233, ULI234, ULI235, ULI236, ULI237, ULI238, ULI239, ULI240, ULI241, ULI242, ULI243, ULI244, ULI245, ULI249, ULI250, ULI251, ULI252, ULI253, ULI254, ULI255, ULI256, ULI257, ULI258, ULI259, ULI260, ULI261, ULI262, ULI263, ULI264, ULI265, ULI266, ULI267, ULI268, ULI269, ULI273, ULI274, ULI275, ULI276, ULI277, ULI278, ULI279, ULI280, ULI281, ULI282, ULI283, ULI284, ULI285, ULI286, ULI287, ULI288, ULI289, ULI293, ULI294, ULI295, ULI296, ULI297, ULI298, ULI299, ULI300, ULI301, ULI302, ULI303, ULI304, ULI305, ULI306, ULI307, ULI311, ULI312, ULI313, ULI314, ULI315, ULI316, ULI317, ULI318, ULI319, ULI320, ULI321, ULI322, ULI323, ULI324, ULI325, ULI326, ULI330, ULI331, ULI332, ULI333, ULI334, ULI335, ULI336, ULI337, ULI338, ULI339, ULI340, ULI341, ULI342, ULI343, ULI344, ULI345, ULI350, ULI351,

ULI352, ULI353, ULI354, ULI355, ULI356, ULI357, ULI358, ULI359, ULI360, ULI361, ULI362, ULI369, ULI370, ULI371, ULI372, ULI373, ULI374, ULI375, ULI376, ULI379, ULI380, ULI381, ULI382, ULI383, ULI384, ULI385, ULI386,

- (iii) Anson currently holds a 100% interest in 71 Placer Claims in Utah, USA. Under the terms of an earn-in agreement for the ULI Project, these placer claims may be subject to area of interest provisions of the agreement to earn-into the ULI Project.

These claims are referred to as ULI501, ULI525, ULI549, ULI573 ULI597, ULI621, ULI645, ULI646, ULI647, ULI648, ULI653, ULI654, ULI655, ULI656, ULI661, ULI662, ULI663, ULI664, ULI665, ULI666, ULI667, ULI668, ULI669, ULI670, ULI671, ULI672, ULI673, ULI674, ULI675, ULI676, ULI677, ULI678, ULI679, ULI680, ULI681, ULI682, ULI683, ULI688, ULI689, ULI690, ULI691, ULI696, ULI697, ULI698, ULI699, ULI700, ULI701, ULI702, ULI703, ULI704, ULI705, ULI706, ULI707, ULI708, ULI709, ULI710, ULI711, ULI712, ULI713, ULI714, ULI715, ULI716, ULI717, ULI718, ULI719, ULI720, ULI721, ULI722, ULI723, ULI724, and ULI725.

- (iv) Anson currently holds a 100% interest in 193 Placer Claims in Utah, USA.

These claims are referred to as ,ULI649, ULI650, ULI651, ULI652, ULI 652W, ULI657, ULI658, ULI659, ULI660, ULI660W, ULI726, ULI727, ULI728, ULI729, ULI730, ULI731, ULI732, ULI733, ULI734, ULI735, ULI736, ULI737, ULI738, ULI739, ULI740, ULI741, ULI742, ULI743, ULI744, ULI745, ULI746, ULI747, ULI748, ULI749, ULI750, ULI751, ULI752, ULI753, ULI754, ULI755, ULI756, ULI757, ULI758, ULI759, ULI760, ULI761, ULI762, ULI763, ULI764, ULI765, ULI766, ULI767, ULI768, ULI769, ULI770, ULI771, ULI772, ULI773, ULI774, ULI775, ULI776, ULI777, ULI778, ULI779, ULI780, ULI781, ULI782, ULI783, ULI784, ULI785, ULI786, ULI787, ULI788, ULI789, ULI790, ULI791, ULI792, ULI793, ULI794, ULI795, ULI844, ULI845, ULI846, ULI847, ULI848, ULI849, ULI850, ULI851, ULI852, ULI853, ULI854, ULI855, ULI856, ULI857, ULI858, ULI859, ULI860, ULI861, ULI862, ULI863, ULI864, ULI865, ULI866, ULI867, ULI868, ULI869, ULI870, ULI871, ULI872, ULI873, ULI874, ULI875, ULI876, ULI877, ULI878, ULI879, ULI880, ULI881, ULI882, ULI883, ULI884, ULI885, ULI886, ULI887, ULI888, ULI889, ULI890, ULI891, ULI892, ULI893, ULI894, ULI895, ULI896, ULI897, ULI898, ULI899, ULI900, ULI901, ULI902, ULI903, ULI904, ULI905, ULI906, ULI907, ULI908, ULI909, ULI910, ULI911, ULI912, ULI913, ULI914, ULI915, ULI916, ULI917, ULI918, ULI919, ULI920, ULI921, ULI922, ULI923, ULI924, ULI925, ULI926, ULI927, ULI928, ULI929, ULI930, ULI931, ULI932, ULI933, ULI934, ULI935, ULI936, ULI937, ULI938, ULI939, ULI940, ULI941, ULI942, ULI943, ULI944, ULI945, ULI946, ULI947, ULI948, ULI949, ULI950, ULI951, ULI952, ULI953 and ULI954.

- (v) Anson currently holds a 100% interest in 66 Placer Claims in Utah, USA.

These claims are referred to as CLOUD001, CLOUD002, CLOUD003, CLOUD004, CLOUD005, CLOUD006, CLOUD007, CLOUD008, CLOUD009, CLOUD010, CLOUD011, CLOUD012, CLOUD013, CLOUD014, CLOUD015, CLOUD016, CLOUD017, CLOUD018, CLOUD019, CLOUD020, CLOUD021, CLOUD022, CLOUD023, CLOUD024, CLOUD025, CLOUD026, CLOUD027, CLOUD028, CLOUD029, CLOUD030, CLOUD031, CLOUD032, CLOUD033, CLOUD034, CLOUD035, CLOUD036, CLOUD037, CLOUD038, CLOUD039, CLOUD040, CLOUD041, CLOUD042, CLOUD043, CLOUD044, CLOUD045, CLOUD046, CLOUD047, CLOUD048, CLOUD049, CLOUD050, CLOUD051, CLOUD052, CLOUD053, CLOUD054, CLOUD055, CLOUD056, CLOUD057, CLOUD058, CLOUD059, CLOUD060, CLOUD061, CLOUD062, CLOUD063, CLOUD064, CLOUD065 and CLOUD066

(vi) Anson currently holds a 100% interest in 178 Placer Claims in Utah, USA.

These claims are referred to as CANE001, CANE002, CANE003, CANE004, CANE005, CANE006, CANE007, CANE008, CANE009, CANE010, CANE011, CANE012, CANE013, CANE014, CANE015, CANE016, CANE017, CANE018, CANE019, CANE020, CANE021, CANE022, CANE023, CANE024, CANE025, CANE026, CANE027, CANE028, CANE029, CANE030, CANE031, CANE032, CANE033, CANE034, CANE035, CANE036, CANE037, CANE038, CANE039, CANE040, CANE041, CANE042, CANE043, CANE044, CANE045, CANE046, CANE047, CANE048, CANE049, CANE050, CANE051, CANE052, CANE053, CANE054, CANE055, CANE056, CANE057, CANE058, CANE059, CANE060, CANE061, CANE062, CANE063, CANE064, CANE065, CANE066, CANE067, CANE068, CANE069, CANE070, CANE071, CANE072, CANE073, CANE074, CANE075, CANE076, CANE077, CANE078, CANE079, CANE080, CANE081, CANE082, CANE083, CANE084, CANE085, CANE086, CANE087, CANE088, CANE089, CANE090, CANE091, CANE092, CANE093, CANE094, CANE095, CANE096, CANE097, CANE098, CANE099, CANE100, CANE101, CANE102, CANE103, CANE104, CANE105, CANE106, CANE107, CANE108, CANE109, CANE110, CANE111, CANE112, CANE113, CANE114, CANE115, CANE116, CANE117, CANE118, CANE119, CANE120, CANE121, CANE122, CANE123, CANE124, CANE125, CANE126, CANE127, CANE128, CANE129, CANE130, CANE131, CANE132, CANE133, CANE134, CANE135, CANE136, CANE137, CANE138, CANE139, CANE140, CANE141, CANE142, CANE143, CANE144, CANE145, CANE146, CANE147, CANE148, CANE149, CANE150, CANE151, CANE152, CANE153, CANE154, CANE155, CANE156, CANE157, CANE158, CANE159, CANE160, CANE161, CANE162, CANE163, CANE164, CANE165, CANE166, CANE167, CANE168, CANE169, CANE170, CANE171, CANE172, CANE173, CANE314, CANE175, CANE176, CANE177, and CANE178.

(vii) Anson currently holds a 100% interest in 334 Placer Claims in Utah, USA. Under the terms of the earn-in agreement referred to in point (i) above for the ULI Project, 88 of these placer claims may be subject to area of interest provisions of the agreement to earn-into the ULI Project.

These claims are referred to as CLOUDIII001, CLOUDIII002, CLOUDIII003, CLOUDIII004, CLOUDIII005, CLOUDIII006, CLOUDIII007, CLOUDIII008, CLOUDIII009, CLOUDIII010, CLOUDIII011, CLOUDIII012, CLOUDIII013, CLOUDIII014, CLOUDIII015, CLOUDIII016, CLOUDIII017, CLOUDIII018, CLOUDIII019, CLOUDIII020, CLOUDIII021, CLOUDIII022, CLOUDIII023, CLOUDIII024, CLOUDIII025, CLOUDIII026, CLOUDIII027, CLOUDIII028, CLOUDIII029, CLOUDIII030, CLOUDIII031, CLOUDIII032, CLOUDIII033, CLOUDIII034, CLOUDIII035, CLOUDIII036, CLOUDIII037, CLOUDIII038, CLOUDIII039, CLOUDIII040, CLOUDIII041, CLOUDIII042, CLOUDIII043, CLOUDIII044, CLOUDIII045, CLOUDIII046, CLOUDIII047, CLOUDIII048, CLOUDIII049, CLOUDIII050, CLOUDIII051, CLOUDIII052, CLOUDIII053, CLOUDIII054, CLOUDIII055, CLOUDIII056, CLOUDIII057, CLOUDIII058, CLOUDIII059, CLOUDIII060, CLOUDIII061, CLOUDIII062, CLOUDIII063, CLOUDIII064, CLOUDIII065, CLOUDIII066, CLOUDIII067, CLOUDIII068, CLOUDIII069, CLOUDIII070, CLOUDIII071, CLOUDIII072, CLOUDIII073, CLOUDIII074, CLOUDIII075, CLOUDIII076, CLOUDIII077, CLOUDIII078, CLOUDIII079, CLOUDIII080, CLOUDIII081, CLOUDIII082, CLOUDIII083, CLOUDIII084, CLOUDIII085, CLOUDIII086, CLOUDIII087, CLOUDIII088, CLOUDIII089, CLOUDIII090, CLOUDIII091, CLOUDIII092, CLOUDIII093, CLOUDIII094, CLOUDIII095, CLOUDIII096, CLOUDIII097, CLOUDIII098, CLOUDIII099, CLOUDIII100, CLOUDIII101, CLOUDIII102, CLOUDIII103, CLOUDIII104, CLOUDIII105, CLOUDIII106, CLOUDIII107, CLOUDIII108, CLOUDIII109, CLOUDIII110, CLOUDIII111, CLOUDIII112, CLOUDIII113, CLOUDIII114, CLOUDIII115, CLOUDIII116, CLOUDIII117, CLOUDIII118, CLOUDIII119, CLOUDIII120, CLOUDIII121, CLOUDIII122, CLOUDIII123, CLOUDIII124, CLOUDIII125, CLOUDIII126, CLOUDIII127, CLOUDIII128, CLOUDIII129, CLOUDIII130, CLOUDIII131, CLOUDIII132, CLOUDIII133, CLOUDIII134, CLOUDIII135, CLOUDIII136, CLOUDIII137, CLOUDIII138, CLOUDIII139, CLOUDIII140, CLOUDIII141, CLOUDIII142, CLOUDIII143, CLOUDIII144, CLOUDIII145, CLOUDIII146, CLOUDIII147, CLOUDIII148, CLOUDIII149, CLOUDIII150, CLOUDIII151, CLOUDIII152, CLOUDIII153, CLOUDIII154, CLOUDIII155, CLOUDIII156, CLOUDIII157, CLOUDIII158, CLOUDIII159, CLOUDIII160, CLOUDIII161, CLOUDIII162, CLOUDIII163, CLOUDIII164, CLOUDIII165, CLOUDIII166, CLOUDIII167, CLOUDIII168, CLOUDIII169, CLOUDIII170, CLOUDIII171, CLOUDIII172, CLOUDIII173, CLOUDIII174, CLOUDIII175, CLOUDIII176, CLOUDIII177, CLOUDIII178, CLOUDIII179, CLOUDIII180, CLOUDIII181, CLOUDIII182, CLOUDIII183, CLOUDIII184, CLOUDIII185, CLOUDIII186,

CLOUDIII187, CLOUDIII188, CLOUDIII189, CLOUDIII190, CLOUDIII191, CLOUDIII192, CLOUDIII193, CLOUDIII194, CLOUDIII195, CLOUDIII196, CLOUDIII197, CLOUDIII198, CLOUDIII199, CLOUDIII200, CLOUDIII201, CLOUDIII202, CLOUDIII203, CLOUDIII204, CLOUDIII205, CLOUDIII206, CLOUDIII207, CLOUDIII208, CLOUDIII209, CLOUDIII210, CLOUDIII211, CLOUDIII212, CLOUDIII213, CLOUDIII214, CLOUDIII215, CLOUDIII216, CLOUDIII217, CLOUDIII218, CLOUDIII219, CLOUDIII220, CLOUDIII221, CLOUDIII222, CLOUDIII223, CLOUDIII224, CLOUDIII225, CLOUDIII226, CLOUDIII227, CLOUDIII228, CLOUDIII229, CLOUDIII230, CLOUDIII231, CLOUDIII232, CLOUDIII233, CLOUDIII234, CLOUDIII235, CLOUDIII236, CLOUDIII237, CLOUDIII238, CLOUDIII239, CLOUDIII240, CLOUDIII241, CLOUDIII242, CLOUDIII243, CLOUDIII244, CLOUDIII245, CLOUDIII246, CLOUDIII247, CLOUDIII248, CLOUDIII249, CLOUDIII250, CLOUDIII251, CLOUDIII252, CLOUDIII253, CLOUDIII254, CLOUDIII255, CLOUDIII256, CLOUDIII257, CLOUDIII258, CLOUDIII259, CLOUDIII260, CLOUDIII261, CLOUDIII262, CLOUDIII263, CLOUDIII264, CLOUDIII265, CLOUDIII266, CLOUDIII267, CLOUDIII268, CLOUDIII269, CLOUDIII270, CLOUDIII271, CLOUDIII272, CLOUDIII273, CLOUDIII274, CLOUDIII275, CLOUDIII276, CLOUDIII277, CLOUDIII278, CLOUDIII279, CLOUDIII280, CLOUDIII281, CLOUDIII282, CLOUDIII283, CLOUDIII284, CLOUDIII285, CLOUDIII286, CLOUDIII287, CLOUDIII288, CLOUDIII289, CLOUDIII290, CLOUDIII291, CLOUDIII292, CLOUDIII293, CLOUDIII294, CLOUDIII295, CLOUDIII296, CLOUDIII297, CLOUDIII298, CLOUDIII299, CLOUDIII300, CLOUDIII301, CLOUDIII302, CLOUDIII303, CLOUDIII304, CLOUDIII305, CLOUDIII306, CLOUDIII307, CLOUDIII308, CLOUDIII309, CLOUDIII310, CLOUDIII311, CLOUDIII312, CLOUDIII313, CLOUDIII314, CLOUDIII315, CLOUDIII316, CLOUDIII317, CLOUDIII318, CLOUDIII319, CLOUDIII320, CLOUDIII321, CLOUDIII322, CLOUDIII323, CLOUDIII324, CLOUDIII325, CLOUDIII326, CLOUDIII327, CLOUDIII328, CLOUDIII329, CLOUDIII330, CLOUDIII331, CLOUDIII332, CLOUDIII333 and CLOUDIII334.

(viii) Anson currently holds a 100% interest in 228 Placer Claims in Utah, USA.

These claims are referred to ULI2 001, ULI2 002, ULI2 003, ULI2 004, ULI2 005, ULI2 006, ULI2 007, ULI2 008, ULI2 009, ULI2 010, ULI2 011, ULI2 012, ULI2 013, ULI2 014, ULI2 015, ULI2 016, ULI2 017, ULI2 018, ULI2 019, ULI2 020, ULI2 021, ULI2 022, ULI2 023, ULI2 024, ULI2 025, ULI2 026, ULI2 027, ULI2 028, ULI2 029, ULI2 030, ULI2 031, ULI2 032, ULI2 033, ULI2 034, ULI2 035, ULI2 036, ULI2 037, ULI2 038, ULI2 039, ULI2 040, ULI2 041, ULI2 042, ULI2 043, ULI2 044, ULI2 045, ULI2 046, ULI2 047, ULI2 048, ULI2 049, ULI2 050, ULI2 051, ULI2 052, ULI2 053, ULI2 054, ULI2 055, ULI2 056, ULI2 057, ULI2 058, ULI2 059, ULI2 060, ULI2 061, ULI2 062, ULI2 063, ULI2 064, ULI2 065, ULI2 066, ULI2 067, ULI2 068, ULI2 069, ULI2 070, ULI2 071, ULI2 072, ULI2 073, ULI2 074, ULI2 075, ULI2 076, ULI2 077, ULI2 078, ULI2 079, ULI2 080, ULI2 081, ULI2 082, ULI2 083, ULI2 084, ULI2 085, ULI2 086, ULI2 087, ULI2 088, ULI2 089, ULI2 090, ULI2 091, ULI2 092, ULI2 093, ULI2 094, ULI2 095, ULI2 096, ULI2 097, ULI2 098, ULI2 099, ULI2 100, ULI2 101, ULI2 102, ULI2 103, ULI2 104, ULI2 105, ULI2 106, ULI2 107, ULI2 108, ULI2 109, ULI2 110, ULI2 111, ULI2 112, ULI2 113, ULI2 114, ULI2 115, ULI2 116, ULI2 117, ULI2 118, ULI2 119, ULI2 120, ULI2 121, ULI2 122, ULI2 123, ULI2 124, ULI2 125, ULI2 126, ULI2 127, ULI2 128, ULI2 129, ULI2 130, ULI2 131, ULI2 132, ULI2 133, ULI2 134, ULI2 135, ULI2 136, ULI2 137, ULI2 138, ULI2 139, ULI2 140, ULI2 141, ULI2 142, ULI2 143, ULI2 144, ULI2 145, ULI2 146, ULI2 147, ULI2 148, ULI2 149, ULI2 150, ULI2 151, ULI2 152, ULI2 153, ULI2 154, ULI2 155, ULI2 156, ULI2 157, ULI2 158, ULI2 159, ULI2 160, ULI2 161, ULI2 162, ULI2 163, ULI2 164, ULI2 165, ULI2 166, ULI2 167, ULI2 168, ULI2 169, ULI2 170, ULI2 171, ULI2 172, ULI2 173, ULI2 174, ULI2 175, ULI2 176, ULI2 177, ULI2 178, ULI2 179, ULI2 180, ULI2 181, ULI2 182, ULI2 183, ULI2 184, ULI2 185, ULI2 186, ULI2 187, ULI2 188, ULI2 189, ULI2 190, ULI2 191, ULI2 192, ULI2 193, ULI2 194, ULI2 195, ULI2 196, ULI2 197, ULI2 198, ULI2 199, ULI2 200, ULI2 201, ULI2 202, ULI2 203, ULI2 204, ULI2 205, ULI2 206, ULI2 207, ULI2 208, ULI2 209, ULI2 210, ULI2 211, ULI2 212, ULI2 213, ULI2 214, ULI2 215, ULI2 216, ULI2 217, ULI2 218, ULI2 219, ULI2 220, ULI2 221, ULI2 222, ULI2 223, ULI2 224, ULI2 225, ULI2 226, ULI2 227 and ULI2 228.

(ix) Anson currently holds a 100% interest in 536 Placer Claims in Utah, USA.

These claims are referred to as MP1, MP2, MP3, MP4, MP5, MP6, MP7, MP8, MP9, MP10, MP11, MP12, MP13, MP14, MP15, MP16, MP17, MP18, MP19, MP20, MP21, MP22, MP23, MP24, MP25, MP26, MP27, MP28, MP29, MP30, MP31, MP32, MP33, MP34, MP35, MP36, MP37, MP38, MP39, MP40, MP41, MP42, MP43, MP44, MP45, MP46, MP47, MP48, MP49, MP50, MP51, MP52, MP53, MP54, MP55, MP56, MP57, MP58, MP59, MP60, MP61, MP62, MP63, MP64, MP65, MP66, MP67,

MP68, MP69, MP70, MP71, MP72, MP73, MP74, MP75, MP76, MP77, MP78, MP79, MP80, MP81, MP82, MP83, MP84, MP85, MP86, MP87, MP88, MP89, MP90, MP91, MP92, MP93, MP94, MP95, MP96, MP97, MP98, MP99, MP100, MP101, MP102, MP103, MP104, MP105, MP106, MP107, MP108, MP109, MP110, MP111, MP112, MP113, MP114, MP115, MP116, MP117, MP118, MP119, MP120, MP121, MP122, MP123, MP124, MP125, MP126, MP127, MP128, MP129, MP130, MP131, MP132, MP133, MP134, MP135, MP136, MP137, MP138, MP139, MP140, MP141, MP142, MP143, MP144, MP145, MP146, MP147, MP148, MP149, MP150, MP151, MP152, MP153, MP154, MP155, MP156, MP157, MP158, MP159, MP160, MP161, MP162, MP163, MP164, MP165, MP166, MP167, MP168, MP169, MP170, MP171, MP172, MP173, MP174, MP175, MP176, MP177, MP178, MP179, MP180, MP181, MP182, MP183, MP184, MP185, MP186, MP187, MP188, MP189, MP190, MP191, MP192, MP193, MP194, MP195, MP196, MP197, MP198, MP199, MP200, MP201, MP202, MP203, MP204, MP205, MP206, MP207, MP208, MP209, MP210, MP211, MP212, MP213, MP214, MP215, MP216, MP217, MP218, MP219, MP220, MP221, MP222, MP223, MP224, MP225, MP226, MP227, MP228, MP229, MP230, MP231, MP232, MP233, MP234, MP235, MP236, MP237, MP238, MP239, MP240, MP241, MP242, MP243, MP244, MP245, MP246, MP247, MP248, MP249, MP250, MP251, MP252, MP253, MP254, MP255, MP256, MP257, MP258, MP259, MP260, MP261, MP262, MP263, MP264, MP265, MP266, MP267, MP268, MP269, MP270, MP271, MP272, MP273, MP274, MP275, MP276, MP277, MP278, MP279, MP280, MP281, MP282, MP283, MP284, MP285, MP286, MP287, MP288, MP289, MP290, MP291, MP292, MP293, MP294, MP295, MP296, MP297, MP298, MP299, MP300, MP301, MP302, MP303, MP304, MP305, MP306, MP307, MP308, MP309, MP310, MP311, MP312, MP313, MP314, MP315, MP316, MP317, MP318, MP319, MP320, MP321, MP322, MP323, MP324, MP325, MP326, MP327, MP328, MP329, MP330, MP331, MP332, MP333, MP334, MP335, MP336, MP337, MP338, MP339, MP340, MP341, MP342, MP343, MP344, MP345, MP346, MP347, MP348, MP349, MP350, MP351, MP352, MP353, MP354, MP355, MP356, MP357, MP358, MP359, MP360, MP361, MP362, MP363, MP364, MP365, MP366, MP367, MP368, MP369, MP370, MP371, MP372, MP373, MP374, MP375, MP376, MP377, MP378, MP379, MP380, MP381, MP382, MP383, MP384, MP385, MP386, MP387, MP388, MP389, MP390, MP391, MP392, MP393, MP394, MP395, MP396, MP397, MP398, MP399, MP400, MP401, MP402, MP403, MP404, MP405, MP406, MP407, MP408, MP409, MP410, MP411, MP412, MP413, MP414, MP415, MP416, MP417, MP418, MP419, MP420, MP421, MP422, MP423, MP424, MP425, MP426, MP427, MP428, MP429, MP430, MP431, MP432, MP433, MP434, MP435, MP436, MP437, MP438, MP439, MP440, MP441, MP442, MP443, MP444, MP445, MP446, MP447, MP448, MP449, MP450, MP451, MP452, MP453, MP454, MP455, MP456, MP457, MP458, MP459, MP460, MP461, MP462, MP463, MP464, MP465, MP466, MP467, MP468, MP469, MP470, MP471, MP472, MP473, MP474, MP475, MP476, MP477, MP478, MP479, MP480, MP481, MP482, MP483, MP484, MP485, MP486, MP487, MP488, MP489, MP490, MP491, MP492, MP493, MP494, MP495, MP496, MP497, MP498, MP499, MP500, MP501, MP502, MP503, MP504, MP505, MP506, MP507, MP508, MP509, MP510, MP511, MP512, MP513, MP514, MP515, MP516, MP517, MP518, MP519, MP520, MP521, MP522, MP523, MP524, MP525, MP526, MP527, MP528, MP529, MP530, MP531, MP532, MP533, MP534, MP535 and MP536.

- (x) Anson currently holds a 100% interest in 586 Placer Claims in Utah, USA.

These claims are referred to as SM1, SM2, SM3, SM4, SM5, SM6, SM7, SM8, SM9, SM10, SM11, SM12, SM13, SM14, SM15, SM16, SM17, SM18, SM19, SM20, SM21, SM22, SM23, SM24, SM25, SM26, SM27, SM28, SM29, SM30, SM31, SM32, SM33, SM34, SM35, SM36, SM37, SM38, SM39, SM40, SM41, SM42, SM43, SM44, SM45, SM46, SM47, SM48, SM49, SM50, SM51, SM52, SM53, SM54, SM55, SM56, SM57, SM58, SM59, SM60, SM61, SM62, SM63, SM64, SM65, SM66, SM67, SM68, SM69, SM70, SM71, SM72, SM73, SM74, SM75, SM76, SM77, SM78, SM79, SM80, SM81, SM82, SM83, SM84, SM85, SM86, SM87, SM88, SM89, SM90, SM91, SM92, SM93, SM94, SM95, SM96, SM97, SM98, SM99, SM100, SM101, SM102, SM103, SM104, SM105, SM106, SM107, SM108,

SM109, SM110, SM111, SM112, SM113, SM114, SM115, SM116, SM117, SM118, SM119, SM120, SM121, SM122, SM123, SM124, SM125, SM126, SM127, SM128, SM129, SM130, SM131, SM132, SM133, SM134, SM135, SM136, SM137, SM138, SM139, SM140, SM141, SM142, SM143, SM144, SM145, SM146, SM147, SM148, SM149, SM150, SM151, SM152, SM153, SM154, SM155, SM156, SM157, SM158, SM159, SM160, SM161, SM162, SM163, SM164, SM165, SM166, SM167, SM168, SM169, SM170, SM171, SM172, SM173, SM174, SM175, SM176, SM177, SM178, SM179, SM180, SM181, SM182, SM183, SM184, SM185, SM186, SM187, SM188, SM189, SM190, SM191, SM192, SM193, SM194, SM195, SM196, SM197, SM198, SM199, SM200, SM201, SM202, SM203, SM204, SM205, SM206, SM207, SM208, SM209, SM210, SM211, SM212, SM213, SM214, SM215, SM216, SM217, SM218, SM219, SM220, SM221, SM222, SM223, SM224, SM225, SM226, SM227, SM228, SM229, SM230, SM231, SM232, SM233, SM234, SM235, SM236, SM237, SM238, SM239, SM240, SM241, SM242, SM243, SM244, SM245, SM246, SM247, SM248, SM249, SM250, SM251, SM252, SM253, SM254, SM255, SM256, SM257, SM258, SM259, SM260, SM261, SM262, SM263, SM264, SM265, SM266, SM267, SM268, SM269, SM270, SM271, SM272, SM273, SM274, SM275, SM276, SM277, SM278, SM279, SM280, SM281, SM282, SM283, SM284, SM285, SM286, SM287, SM288, SM289, SM290, SM291, SM292, SM293, SM294, SM295, SM296, SM297, SM298, SM299, SM300, SM301, SM302, SM303, SM304, SM305, SM306, SM307, SM308, SM309, SM310, SM311, SM312, SM313, SM314, SM315, SM316, SM317, SM318, SM319, SM320, SM321, SM322, SM323, SM324, SM325, SM326, SM327, SM328, SM329, SM330, SM331, SM332, SM333, SM334, SM335, SM336, SM337, SM338, SM339, SM340, SM341, SM342, SM343, SM344, SM345, SM346, SM347, SM348, SM349, SM350, SM351, SM352, SM353, SM354, SM355, SM356, SM357, SM358, SM359, SM360, SM361, SM362, SM363, SM364, SM365, SM366, SM367, SM368, SM369, SM370, SM371, SM372, SM373, SM374, SM375, SM376, SM377, SM378, SM379, SM380, SM381, SM382, SM383, SM384, SM385, SM386, SM387, SM388, SM389, SM390, SM391, SM392, SM393, SM394, SM395, SM396, SM397, SM398, SM399, SM400, SM401, SM402, SM403, SM404, SM405, SM406, SM407, SM408, SM409, SM410, SM411, SM412, SM413, SM414, SM415, SM416, SM417, SM418, SM419, SM420, SM421, SM422, SM423, SM424, SM425, SM426, SM427, SM428, SM429, SM430, SM431, SM432, SM433, SM434, SM435, SM436, SM437, SM438, SM439, SM440, SM441, SM442, SM443, SM444, SM445, SM446, SM447, SM448, SM449, SM450, SM451, SM452, SM453, SM454, SM455, SM456, SM457, SM458, SM459, SM460, SM461, SM462, SM463, SM464, SM465, SM466, SM467, SM468, SM469, SM470, SM471, SM472, SM473, SM474, SM475, SM476, SM477, SM478, SM479, SM480, SM481, SM482, SM483, SM484, SM485, SM486, SM487, SM488, SM489, SM490, SM491, SM492, SM493, SM494, SM495, SM496, SM497, SM498, SM499, SM500, SM501, SM502, SM503, SM504, SM505, SM506, SM507, SM508, SM509, SM510, SM511, SM512, SM513, SM514, SM515, SM516, SM517, SM518, SM519, SM520, SM521, SM522, SM523, SM524, SM525, SM526, SM527, SM528, SM529, SM530, SM531, SM532, SM533, SM534, SM535, SM536, SM537, SM538, SM539, SM540, SM541, SM542, SM543, SM544, SM545, SM546, SM547, SM548, SM549, SM550, SM551, SM552, SM553, SM554, SM555, SM556, SM557, SM558, SM559, SM560, SM561, SM562, SM563, SM564, SM565, SM566, SM567, SM568, SM569, SM570, SM571, SM572, SM573, SM574, SM575, SM576, SM577, SM578, SM579, SM580, SM581, SM582, SM583, SM584, SM585 and SM586.

(xi) Anson currently holds a 100% interest in 208 Placer Claims in Utah, USA.

These claims are re referred to GE 1, GE 1A, GE 1B, GE 1C, GE 1D GE 1E, GE 1F, GE 1G, GE 2, GE 2A, GE 2B, GE 2C, GE 2D GE 2E, GE 2F, GE 2G, GE 3, GE 3A, GE 3B, GE 3C, GE 3D GE 3E, GE 3F, GE 3G, GE 4, GE 4A, GE 4B, GE 4C, GE 4D GE 4E, GE 4F, GE 4G, GE 5, GE 5A, GE 5B, GE 5C, GE 5D GE 5E, GE 5F, GE 5G, GE 6, GE 6A, GE 6B, GE 6C, GE 6D GE 6E, GE 6F, GE 6G, GE 7, GE 7A, GE 7B, GE 7C, GE 7D GE 7E, GE 7F, GE 7G, GE 8, GE 8A, GE 8B, GE 8C, GE 8D GE 8E, GE 8F, GE 8G, GE 9, GE 9A, GE 9B, GE 9C, GE 9D GE 9E, GE 9F, GE 9G, GE 10, GE 10A, GE 10B, GE 10C, GE 10D GE 10E, GE 10F, GE 10G, GE 11, GE 11A, GE 11B, GE 11C, GE 11D GE 11E, GE 11F, GE 11G, GE 12, GE 12A, GE 12B, GE 12C,

GE 12D GE 12E, GE 12F, GE 12G, GE 13, GE 13A, GE 13B, GE 13C, GE 13D GE 13E, GE 13F, GE 13G, GE 14, GE 14A, GE 14B, GE 14C, GE 14D GE 14E, GE 14F, GE 14G, GE 15, GE 15A, GE 15B, GE 15C, GE 15D GE 15E, GE 15F, GE 15G, GE 16, GE 16A, GE 16B, GE 16C, GE 16D GE 16E, GE 16F, GE 16G, GE 17, GE 17A, GE 17B, GE 17C, GE 17D GE 17E, GE 17F, GE 17G, GE 18, GE 18A, GE 18B, GE 18C, GE 18D GE 18E, GE 18F, GE 18G, GE 19, GE 19A, GE 19B, GE 19C, GE 19D GE 19E, GE 19F, GE 19G, GE 20, GE 20A, GE 20B, GE 20C, GE 20D GE 20E, GE 20F, GE 20G, GE 21, GE 21A, GE 21B, GE 21C, GE 21D GE 21E, GE 21F, GE 21G, GE 22, GE 22A, GE 22B, GE 22C, GE 22D GE 22E, GE 22F, GE 22G, GE 23, GE 23A, GE 23B, GE 23C, GE 23D GE 23E, GE 23F, GE 23G, GE 24, GE 24A, GE 24B, GE 24C, GE 24D GE 24E, GE 24F, GE 24G, GE 25, GE 25A, GE 25B, GE 25C, GE 25D GE 25E, GE 25F, GE 25G, GE 26, GE 26A, GE 26B, GE 26C, GE 26D GE 26E, GE 26F, GE 26G, GE 11, GE 11A, GE 11B, GE 11C, GE 11D GE 11E, GE 11F, GE 11G, GE 12, GE 12A, GE 12B, GE 12C, GE 12D GE 12E, GE 12F, GE 12G, GE 13, GE 13A, GE 13B, GE 13C, GE 13D GE 13E, GE 13F, GE 13G, GE 14, GE 14A, GE 14B, GE 14C, GE 14D GE 14E, GE 14F, GE 14G, GE 15, GE 15A, GE 15B, GE 15C, GE 15D GE 15E, GE 15F, GE 15G, GE 16, GE 16A, GE 16B, GE 16C, GE 16D GE 16E, GE 16F, GE 16G Anson currently holds a 100% interest in 3 SITLA Potash and Mineral Salts Lease in Utah, USA. These claims are referred to as ML-53853-OBA, ML-54099-OBA, and ML-54253-OBA.

(xii) Anson currently holds a 100% interest in 2 SITLA Industrial Permit in Utah, USA. These claims are referred to as SULA1872 and 1930.

(xiii) Anson currently holds a 100% interest in 151 lode claims.

These claims are referred to as YELLOWCAT002, YELLOWCAT011, YELLOWCAT012, YELLOWCAT013, YELLOWCAT014, YELLOWCAT015, YELLOWCAT017, YELLOWCAT018, YELLOWCAT019, YELLOWCAT020, YELLOWCAT021, YELLOWCAT022, YELLOWCAT023, YELLOWCAT024, YELLOWCAT025, YELLOWCAT039, YELLOWCAT041, YELLOWCAT042, YELLOWCAT043, YELLOWCAT044, YELLOWCAT045, YELLOWCAT046, YELLOWCAT047, YELLOWCAT048, YELLOWCAT049, YELLOWCAT050, YELLOWCAT051, YELLOWCAT052, YELLOWCAT053, YELLOWCAT054, YELLOWCAT055, YELLOWCAT056, YELLOWCAT057, YELLOWCAT058, YELLOWCAT059, YELLOWCAT060, YELLOWCAT061, YELLOWCAT073, YELLOWCAT074, YELLOWCAT076, YELLOWCAT078, YELLOWCAT080, YELLOWCAT082, YELLOWCAT083, YELLOWCAT084, YELLOWCAT085, YELLOWCAT120, YELLOWCAT121, YELLOWCAT122, YELLOWCAT123, YELLOWCAT124, YELLOWCAT125, YELLOWCAT126, YELLOWCAT127, YELLOWCAT128, YELLOWCAT129, YELLOWCAT130, YELLOWCAT131, YELLOWCAT132, YELLOWCAT133, YELLOWCAT162, YELLOWCAT163, YELLOWCAT164, YELLOWCAT165, YELLOWCAT166, YELLOWCAT167, YELLOWCAT168, YELLOWCAT169, YELLOWCAT170, YELLOWCAT171, YELLOWCAT172, YELLOWCAT173, YELLOWCAT174, YELLOWCAT175, YELLOWCAT196, YELLOWCAT197, YELLOWCAT198, YELLOWCAT199, YELLOWCAT200, YELLOWCAT201, YELLOWCAT202, YELLOWCAT203, YELLOWCAT204, YELLOWCAT205, YELLOWCAT206, YELLOWCAT207, YELLOWCAT208, YELLOWCAT209, YELLOWCAT210, YELLOWCAT211, YELLOWCAT213, YELLOWCAT231, YELLOWCAT232, YELLOWCAT233, YELLOWCAT234, YELLOWCAT235, YELLOWCAT236, YELLOWCAT237, YELLOWCAT238, YELLOWCAT239, YELLOWCAT240, YELLOWCAT241, YELLOWCAT242, YELLOWCAT243, YELLOWCAT244, YELLOWCAT246, YELLOWCAT267, YELLOWCAT268, YELLOWCAT269, YELLOWCAT270, YELLOWCAT271, YELLOWCAT272, YELLOWCAT273, YELLOWCAT274, YELLOWCAT275, YELLOWCAT276, YELLOWCAT277, YELLOWCAT278, YELLOWCAT284, YELLOWCAT308, YELLOWCAT309, YELLOWCAT310, YELLOWCAT311, YELLOWCAT312, YELLOWCAT313, YELLOWCAT314, YELLOWCAT315, YELLOWCAT316, YELLOWCAT317 and JM#1 to JM#22.

GR 677, GR 678, GR 679, GR 680, GR 681, GR 682, GR 683, GR 684, GR 693, GR 695, GR 696, GR 697, GR 698, GR 699, GR 700, GR 709, GR 710, GR 711, GR 712, GR 713, GR 714, GR 715, GR 716, GR 725, GR 726W, GR 726E, GR 727, GR 728, GR 729, GR 730, GR 731, GR 732, GR 733, GR 734, GR 735, GR 736, GR 737, GR 738, GR 739, GR 740, GR 741, GR 742, GR 743, GR 744, GR 753, GR 754, GR 755, GR 756, GR 757, GR 758, GR 759, GR 760, GR 761, GR 762, GR 763, GR 764, GR 765, GR 766, GR 775, GR 776, GR 777, GR 778, GR 779, GR 780, GR 781, GR 782, GR 783, GR 784, GR 785, GR 786, GR 787, GR 788, GR 797, GR 798, GR 799, GR 800, GR 801, GR 802, GR 803, GR 804, GR 805, GR 806, GR 807, GR 808, GR 809, GR 810, GR 819, GR 820, GR 821, GR 822, GR 823, GR 824, GR 825, GR 826, GR 827, GR 828, GR 829, GR 830, GR 831, GR 832, GR 841, GR 842, GR 843, GR 844, GR 845, GR 846, GR 847, GR 848, GR 849, GR 850, GR 851, GR 852, GR 853, GR 854, GR 861, GR 862, GR 863, GR 864, GR 865, GR 866, GR 867, GR 868, GR 869, GR 870, GR 871, GR 872, GR 873, GR 874, GR 879, GR 880, GR 881, GR 882, GR 883, GR 884, GR 885, GR 886, GR 887, GR 888, GR 889, GR 890, GR 891, GR 892, GR 895, GR 896, GR 897, GR 898, GR 899, GR 900, GR 901, GR 902, GR 903, GR 904, GR 905, GR 906, GR 907, GR 908, GR 911, GR 912, GR 913, GR 914, GR 915, GR 916, GR 917, GR 918, GR 919, GR 920, GR 921, GR 922, GR 923, GR 924, GR 925, GR 926, GR 927, GR 928, GR 929, GR 930, GR 931, GR 932, GR 933, GR 934, GR 935, GR 936, GR 937, GR 938, GR 939, GR 940, GR 941, GR 942, GR 943, GR 944, GR 945, GR 946, GR 947, GR 948, GR 949, GR 950, GR 951 and GR 952.

(xvi) Anson currently holds a 100% interest in 396 Placer Claims in Utah, USA.

These claims are referred to as TM 1, TM 2, TM 3, TM 4, TM 5, TM 6, TM 7, TM 8, TM 9, TM 10, TM 11, TM 12, TM 13, TM 14, TM 15, TM 16, TM 17, TM 18, TM 19, TM 20, TM 21, TM 22, TM 23, TM 24, TM 25, TM 26, TM 27, TM 28, TM 29, TM 30, TM 31, TM 32, TM 33, TM 34, TM 35, TM 36, TM 37, TM 38, TM 39, TM 40, TM 41, TM 42, TM 43, TM 44, TM 45, TM 46, TM 47, TM 48, TM 49, TM 50, TM 51, TM 52, TM 53, TM 54, TM 55, TM 56, TM 57, TM 58, TM 59, TM 60, TM 61, TM 62, TM 63, TM 64, TM 65, TM 66, TM 67, TM 68, TM 69, TM 70, TM 71, TM 72, TM 73, TM 74, TM 75, TM 76, TM 77, TM 78, TM 79, TM 80, TM 81, TM 82, TM 83, TM 84, TM 85, TM 86, TM 87, TM 88, TM 89, TM 90, TM 91, TM 92, TM 93, TM 94, TM 95, TM 96, TM 97, TM 98, TM 99, TM 100, TM 101, TM 102, TM 103, TM 104, TM 105, TM 106, TM 107, TM 108, TM 109, TM 176, TM 177, TM 178, TM 179, TM 180, TM 181, TM 182, TM 183, TM 184, TM 185, TM 186, TM 187, TM 188, TM 189, TM 190, TM 257, TM 258, TM 259, TM 260, TM 261, TM 262, TM 263, TM 264, TM 265, TM 266, TM 267, TM 268, TM 269, TM 270, TM 271, TM 272, TM 273, TM 274, TM 275, TM 276, TM 277, TM 278, TM 341, TM 342, TM 343, TM 344, TM 345, TM 346, TM 347, TM 348, TM 349, TM 350, TM 351, TM 352, TM 353, TM 354, TM 355, TM 356, TM 357, TM 358, TM 359, TM 360, TM 361, TM 362, TM 425, TM 426, TM 427, TM 428, TM 429, TM 430, TM 431, TM 432, TM 433, TM 434, TM 435, TM 436, TM 437, TM 438, TM 439, TM 440, TM 447, TM 448, TM 449, TM 450, TM 451, TM 452, TM 453, TM 454, TM 455, TM 456, TM 457, TM 458, TM 459, TM 460, TM 461, TM 462, TM 547, TM 548, TM 549, TM 550, TM 551, TM 552, TM 553, TM 554, TM 555, TM 556, TM 557, TM 558, TM 559, TM 560, TM 561, TM 562, TM 563, TM 564, TM 565, TM 566, TM 567, TM 568, TM 569, TM 570, TM 571, TM 572, TM 573, TM 574, TM 575, TM 576, TM 577, TM 578, TM 579, TM 580, TM 581, TM 582, TM 583, TM 584, TM 585, TM 586, TM 587, TM 588, TM 669, TM 670, TM 671, TM 672, TM 673, TM 674, TM 675, TM 676, TM 677, TM 678, TM 679, TM 680, TM 681, TM 682, TM 683, TM 684, TM 685, TM 686, TM 687, TM 688, TM 689, TM 690, TM 691, TM 692, TM 693, TM 694, TM 695, TM 696, TM 697, TM 698, TM 699, TM 700, TM 701, TM 702, TM 703, TM 704, TM 705, TM 706, TM 707, TM 708, TM 709, TM 710, TM 791, TM 792, TM 793, TM 794, TM 795, TM 796, TM 797, TM 798, TM 799, TM 800, TM 801, TM 802, TM 803, TM 804, TM 805, TM 806, TM 807, TM 808, TM 807, TM 808. TM 809, TM 810, TM 811, TM 812, TM 813, TM 814, TM 815, TM 816, TM 817, TM 818, TM 819, TM 820, TM 821, TM 822, TM 823, TM 824, TM 825, TM 826, TM 827, TM 828, TM 829, TM 830, TM 831, TM 832, TM 913, TM 914, TM 915, TM 916, TM 917, TM 918, TM 919, TM 920, TM 921, TM 922, TM 923, TM 924, TM 925, TM 926, TM 927, TM 928, TM 929, TM 930, TM 931, TM 932, TM 933, TM 934, TM 935, TM 936, TM 937, TM 938, TM 939, TM 940, TM 941, TM 942, TM 943, TM 944, TM 945, TM 946, TM 947, TM 948, TM 949, TM 1035, TM 1036, TM 1037, TM 1038, TM 1039, TM 1040, TM 1041, TM 1042, TM 1043, TM 1044, TM 1045, TM 1046, TM 1047, TM 1048, TM 1049, TM 1050, TM 1051, TM 1052, TM 1053, TM 1054, TM 1055, TM 1056, TM 1057, TM 1058, TM 1059, TM 1060, TM 1061, TM 1062 and TM 1063.

Appendix 5B

Mining exploration entity or oil and gas exploration entity quarterly cash flow report

Name of entity

Anson Resources Limited

ABN

46 136 636 005

Quarter ended ("current quarter")

30 September 2023

Consolidated statement of cash flows	Current quarter \$A'000	Year to date (3 months) \$A'000
1. Cash flows from operating activities		
1.1 Receipts from customers		
1.2 Payments for		
(a) exploration & evaluation	(6,048)	(6,048)
(b) development	-	-
(c) production	-	-
(d) staff costs	(964)	(964)
(e) administration and corporate costs	(643)	(643)
1.3 Dividends received (see note 3)	-	-
1.4 Interest received	277	277
1.5 Interest and other costs of finance paid	(26)	(26)
1.6 Income taxes paid	-	-
1.7 Government grants and tax incentives	-	-
1.8 Other (provide details if material)	-	-
1.9 Net cash from / (used in) operating activities	(7,404)	(7,404)

2. Cash flows from investing activities		
2.1 Payments to acquire or for:		
(a) entities	-	-
(b) tenements	-	-
(c) property, plant and equipment	(2)	(2)
(d) exploration & evaluation	-	-
(e) investments	-	-
(f) other non-current assets	-	-

Consolidated statement of cash flows		Current quarter \$A'000	Year to date (3 months) \$A'000
2.2	Proceeds from the disposal of:		
	(a) entities	-	-
	(b) tenements	-	-
	(c) property, plant and equipment	-	-
	(d) investments	-	-
	(e) other non-current assets	-	-
2.3	Cash flows from loans to other entities	-	-
2.4	Dividends received (see note 3)	-	-
2.5	Other (provide details if material)	-	-
2.6	Net cash from / (used in) investing activities	(2)	(2)

3.	Cash flows from financing activities		
3.1	Proceeds from issues of equity securities (excluding convertible debt securities)	-	-
3.2	Proceeds from issue of convertible debt securities	-	-
3.3	Proceeds from exercise of options	36	36
3.4	Transaction costs related to issues of equity securities or convertible debt securities	-	-
3.5	Proceeds from borrowings	-	-
3.6	Repayment of borrowings (Lease liabilities)	(116)	(116)
3.7	Transaction costs related to loans and borrowings	-	-
3.8	Dividends paid	-	-
3.9	Other (provide details if material)	-	-
3.10	Net cash from / (used in) financing activities	(80)	(80)

4.	Net increase / (decrease) in cash and cash equivalents for the period		
4.1	Cash and cash equivalents at beginning of period	38,645	38,645
4.2	Net cash from / (used in) operating activities (item 1.9 above)	(7,404)	(7,404)
4.3	Net cash from / (used in) investing activities (item 2.6 above)	(2)	(2)
4.4	Net cash from / (used in) financing activities (item 3.10 above)	(80)	(80)

Mining exploration entity or oil and gas exploration entity quarterly cash flow report

Consolidated statement of cash flows		Current quarter \$A'000	Year to date (3 months) \$A'000
4.5	Effect of movement in exchange rates on cash held	(34)	(34)
4.6	Cash and cash equivalents at end of period	31,125	31,125

5.	Reconciliation of cash and cashequivalents at the end of the quarter (as shown in the consolidated statement of cash flows) to therelated items in the accounts	Current quarter \$A'000	Previous quarter \$A'000
5.1	Bank balances	31,125	38,645
5.2	Call deposits	-	-
5.3	Bank overdrafts	-	-
5.4	Other (provide details)	-	-
5.5	Cash and cash equivalents at end of quarter (should equal item 4.6 above)	31,125	38,645

6.	Payments to related parties of the entity and theirassociates	Current quarter \$A'000
6.1	Aggregate amount of payments to related parties and theirassociates included in item 1	374
6.2	Aggregate amount of payments to related parties and theirassociates included in item 2	-

Note: if any amounts are shown in items 6.1 or 6.2, your quarterly activity report must include a description of, and an explanation for, such payments.

Mining exploration entity or oil and gas exploration entity quarterly cash flow report

7. Financing facilities	Total facility amount at quarter end \$A'000	Amount drawn at quarter end \$A'000
<i>Note: the term "facility" includes all forms of financing arrangements available to the entity.</i>		
<i>Add notes as necessary for an understanding of the sources of finance available to the entity.</i>		
7.1 Loan facilities	-	-
7.2 Credit standby arrangements	-	-
7.3 Other (please specify)	15,000	250
7.4 Total financing facilities	15,000	250
7.5 Unused financing facilities available at quarter end		14,750
7.6	<p>Include in the box below a description of each facility above, including the lender, interest rate, maturity date and whether it is secured or unsecured. If any additional financing facilities have been entered into or are proposed to be entered into after quarter end, include a note providing details of those facilities as well.</p> <p>On 17 May 2019 the company entered into an equity placement facility with Long State Investment Limited (LSI) for \$15,000,000.</p> <p>Anson may until 31 December 2023 draw down up to \$250,000 at a time (\$1,500,000 with the prior written consent of the investor) at a cost of 5% of the drawn down amount at a price equal to the average of 2 daily VWAPs nominated by the investor during the 20 consecutive trading days commencing on the trading day immediately after a placement notice is provided.</p> <p>To date \$250,000 has been drawn down. Drawdown is at the discretion of Anson.</p> <p>The facility is secured against 5,000,000 security shares</p>	

8. Estimated cash available for future operating activities	\$A'000
8.1 Net cash from / (used in) operating activities (item 1.9)	(7,404)
8.2 (Payments for exploration & evaluation classified as investing activities) (item 2.1(d))	-
8.3 Total relevant outgoings (item 8.1 + item 8.2)	(7,404)
8.4 Cash and cash equivalents at quarter end (item 4.6)	31,125
8.5 Unused finance facilities available at quarter end (item 7.5)	14,750
8.6 Total available funding (item 8.4 + item 8.5)	45,875
8.7 Estimated quarters of funding available (item 8.6 divided by item 8.3)	6.20
<i>Note: if the entity has reported positive relevant outgoings (ie a net cash inflow) in item 8.3, answer item 8.7 as "N/A". Otherwise, a figure for the estimated quarters of funding available must be included in item 8.7.</i>	
8.8	<p>If item 8.7 is less than 2 quarters, please provide answers to the following questions:</p> <p>8.8.1 Does the entity expect that it will continue to have the current level of net operating cash flows for the time being and, if not, why not?</p>

Mining exploration entity or oil and gas exploration entity quarterly cash flow report

8.8.2 Has the entity taken any steps, or does it propose to take any steps, to raise further cash to fund its operations and, if so, what are those steps and how likely does it believe that they will be successful?

Answer: n/a

8.8.3 Does the entity expect to be able to continue its operations and to meet its business objectives and, if so, on what basis?

Answer: n/a

Note: where item 8.7 is less than 2 quarters, all of questions 8.8.1, 8.8.2 and 8.8.3 above must be answered.

Compliance statement

- 1 This statement has been prepared in accordance with accounting standards and policies which comply with Listing Rule 19.11A.
- 2 This statement gives a true and fair view of the matters disclosed.

Date: 30 October 2023

Authorised by: The Executive Chairman and CEO
(Name of body or officer authorising release – see note 4)

Notes

1. This quarterly cash flow report and the accompanying activity report provide a basis for informing the market about the entity's activities for the past quarter, how they have been financed and the effect this has had on its cash position. An entity that wishes to disclose additional information over and above the minimum required under the Listing Rules is encouraged to do so.
2. If this quarterly cash flow report has been prepared in accordance with Australian Accounting Standards, the definitions in and provisions of, *AASB 6: Exploration for and Evaluation of Mineral Resources* and *AASB 107: Statement of Cash Flows* apply to this report. If this quarterly cash flow report has been prepared in accordance with other accounting standards agreed by ASX pursuant to Listing Rule 19.11A, the corresponding equivalent standards apply to this report.
3. Dividends received may be classified either as cash flows from operating activities or cash flows from investing activities, depending on the accounting policy of the entity.
4. If this report has been authorised for release to the market by your board of directors, you can insert here: "By the board". If it has been authorised for release to the market by a committee of your board of directors, you can insert here: "By the [name of board committee – eg Audit and Risk Committee]". If it has been authorised for release to the market by a disclosure committee, you can insert here: "By the Disclosure Committee".
5. If this report has been authorised for release to the market by your board of directors and you wish to hold yourself out as complying with recommendation 4.2 of the ASX Corporate Governance Council's *Corporate Governance Principles and Recommendations*, the board should have received a declaration from its CEO and CFO that, in their opinion, the financial records of the entity have been properly maintained, that this report complies with the appropriate accounting standards and provides a true and fair view of the cash flows of the entity, and that their opinion has been formed on the basis of a sound system of risk management and internal control which is operating effectively.

t