

QUARTERLY ACTIVITIES AND CASHFLOW REPORT

FOR THE PERIOD ENDED 30 SEPTEMBER 2023

Tesoro Gold Limited (ASX: TSO, OTCQB: TSORF) (**Tesoro** or the **Company**) is pleased to report on its activities for the quarter ended 30 September 2023 (the **Quarter**).

HIGHLIGHTS

- Surface sampling results indicated a significant southern extension to Ternera, with gold mineralisation shown to extend up to 380m south from the existing Ternera Mineral Resource Estimate (**MRE**)¹.
- Initial eight holes at the Kitsune Target and one scout hole at Toro Blanco completed, with all holes successfully intersecting the target target El Zorro Tonalite (**EZT**) lithology¹.
- Kitsune drilling program to be completed once a replacement drilling contractor is engaged¹.
- El Zorro SCM (Tesoro 89.1%) granted exporter status allowing for historical Value Added Tax (**VAT**) recovery and future VAT exemption¹.
- Value of outstanding qualifying, unrecovered VAT expenditure stands at CLP2.39 billion, or approximately A\$4.15 million¹.
- Tesoro's underlying ownership in the El Zorro project increased to approximately 89.1% via recognition of historical aggregate capital contribution of approximately A\$22.4 million since March 2021².
- Mr Alan Gibson appointed the Tesoro Board as nominee Non-Executive Director for Gold Fields Ltd³.
- Cash balance of A\$1.04 million and zero debt at 30 September 2023.

Tesoro Gold Managing Director, Zeff Reeves commented:

"During the September quarter we received some fantastic surface sampling results which provided strong evidence that the Ternera gold bearing fault zones extend, at a minimum, of up to 380m south of the existing deposit.

¹ Refer ASX announcement 18 September 2023

² Refer ASX announcement 3 July 2023

³ Refer ASX announcement 30 August 2023

We completed eight first pass drill holes at Kitsune and one scout hole at Toro Blanco. All holes drilled to date successfully intersected the target EZT lithology, indicating strong potential for large scale extensions of the existing Ternera Resource and offering exceptional exploration and resource growth potential.

We remain confident in the immense value inherent in Ternera and shall continue to progress our efforts in growing the existing Ternera MRE and unlocking the potential of the broader El Zorro District as a major emerging gold province in Chile."

EL ZORRO GOLD PROJECT, CHILE

Ternera South Surface Sampling Results

The shallow, high-grade Ternera South drilling results announced in the previous quarter (refer ASX Announcements 11 May 2023 and 21 June 2023) have been followed by additional activities designed to better define the southern extensions of the Ternera Deposit. These activities included detailed mapping and further continuous surface channel sampling south of the existing Ternera MRE.

On 18 September, Tesoro announced that further assays received enabled the definition of shallow, high-grade gold zones, with multiple mineralised fault zones returning high-grade results. Surface gold mineralisation has now been confirmed up to 380m south of the existing MRE, validated by the previously announced drilling.

Results from surface sampling¹ suggest a significant southern extension to Ternera, **with grades up to 30.80g/t Au returned**, including;

- 4.00m @ 13.31g/t Au (EZTR004143);
- 13.00m @ 9.67g/t Au (EZTR004207) including;
 - 6.00m @ 20.02g/t Au; and
 - 3.00m @ 30.80g/t Au.
- 9.00m @ 4.60g/t Au (EZTR004208) including;
 - 3.00m @ 12.60g/t Au.
 - 3.00m @ 4.70g/t Au (EZTR004209).
- Results demonstrate surface gold mineralisation extends up to 380m south of the existing Ternera MRE.
- Up to 15g/t Au returned from an initial scout hole completed at Toro Blanco.

Kitsune Target Drilling

First pass drilling at the Kitsune Target was put on hold while a replacement contractor is engaged to complete the scheduled program. To date, eight holes are complete, and

drilling is planned to continue once a new drilling contractor has been secured to complete the remaining program. All initial holes have intersected the EZT lithology which is the main gold host at the Ternera Gold Deposit. Final assays and multielement XRF analysis of pulverised core samples are outstanding, with results expected during Q4 2023.

Toro Blanco Drilling

One scout hole was completed at Toro Blanco which returned a shallow high-grade intercept of 0.50m @ 15.00g/t Au from 35.00m within faulted EZT. This result confirmed the continuation of the mineralising Dorado Fault System from Ternera to over 1,900m north to Toro Blanco. Tesoro plans to further define gold mineralisation between Ternera and Toro Blanco with additional drilling in the coming months, targeting extensions of the Ternera Gold Deposit to the north.

El Zorro S.C.M. Granted Exporter Status

As previously announced on 25 August 2022, the Company received judicial approval for provisional surface property easement rights at the El Zorro Gold Project, Chile. These rights entitle Tesoro to recover VAT paid on previous expenditure on the acquisition of fixed assets. As announced on 31 January 2023, approximately A\$592,000 has been received to date in its VAT recoveries.

Tesoro announced on 18 September 2023 that it had completed the relevant requirements to be qualified as a future exporter. This permits the Company to receive the full recovery of VAT already expended on the El Zorro Gold Project since 2017 and also any future VAT generated by the Project.

The current balance of unrecovered VAT expenditure is CLP2.39B, or approximately A\$4.15M. The Company is working with the Chilean tax authority to have this credit refunded as soon as possible.

New gold anomaly defined at Drone Hill

Post the end of the quarter on 18 October 2023, the Company announced positive surface sampling results at Drone Hill, west of Ternera. This new large outcropping gold anomaly returned intersections of up to 47m, including:

- 47m @ 1.40g/t Au (EZTR004255) including;
 - 9m @ 4.66g/t Au
- 15m @ 0.53g/t Au (EZTR004132)

The surface sampling results have defined a number of high-priority drill targets for the next stage of work at Drone Hill.

Increased Ownership Interest in El Zorro

Tesoro announced on 3 July 2023 that its 95%-owned Chilean subsidiary Tesoro Mining Chile SpA (**TMC**) increased its ownership stake in El Zorro to approximately 93.8%.

At a shareholder meeting held on 7 June 2023, El Zorro S.C.M resolved to increase the capital base via contribution on a pro-rated basis. TMC subscribed its pro-rata shares for an amount equal to CLP12,120,334,847 (approximately A\$22.4 million). This sum reflects TMC's funding of exploration and development activities at El Zorro since March 2021.

Wanaco SpA, the minority shareholder in El Zorro S.C.M., declined to participate in the capital increase, resulting in TMC increasing its ownership in El Zorro S.C.M. to approximately 93.8%. Tesoro now holds a total ownership position in El Zorro of approximately 89.1%

CORPORATE

Board Changes

On 30 August 2023, Tesoro announced the appointment of Mr Alan Gibson to the Board as a Non-Executive Director. Mr Gibson is a nominee of Corporate International Holdings BV, a wholly owned subsidiary of Gold Fields Ltd, which currently owns approximately 15.49% of Tesoro's issued capital.

Alan Gibson is an experienced and skilled M&A lawyer, with more than 20 years' experience in Corporate, Energy and Resources Law, including more than 10 years of that as part of the Gold Fields Corporate Development team. Alan is currently Vice President: Corporate Development – Head of Legal for Gold Fields and has played an important role in a number of the group's key growth transactions around the world.

Mr. Gibson is an admitted legal practitioner holding a Bachelor of Laws and Bachelor of Economics from Murdoch University (WA).

Subsequent to quarter end, on 5 October 2023, Tesoro announced the resignation of Ms Kristie Young as Non-Executive Director. Ms Young stepped down from the Tesoro board to focus on her other commitments.

As part of an ongoing Board re-composition, the Company intends to make new appointments in due course.

Salary Sacrifice Plan

On 19 October 2023, the Company issued 380,570 share rights to Executive Director, Mr Linton Putland in lieu of approx. \$7,500 of remuneration, pursuant to the Company's Salary Sacrifice Plan as approved by shareholders at the Annual General Meeting held on 25

November 2023. The Salary Sacrifice Plan enables executives, employees and directors of the Company to receive share rights in the Company, in lieu of remuneration or fees. The Salary Sacrifice Plan has been designed to further align participants (being executives, employees and directors of the Company) with shareholder interests whilst being an effective way for the Company to conserve capital.

Expenditure and Payments to Related Parties

During the Quarter, the Company spent approximately A\$1.40 million on exploration activities, which comprised primarily of diamond drilling programs, surface mapping and sampling programs and ongoing mining studies at the Ternerera Gold Deposit.

As outlined in the Appendix 5B for the quarter ending 30 September 2023 (sections 6.1 and 6.2), approximately A\$221k in payments were made to related parties and/or their associates as remuneration (inc. superannuation) for the Managing Director, Non-Executive Director fees and consulting fees.

Cash

Tesoro's cash balance at 30 September 2023 was A\$1.04 million and the Company had zero debt (excluding typical trade creditors).

Authorised by the Board of Tesoro Gold Ltd.

For more information:

Company:

Zeff Reeves, Managing Director
Tesoro Gold Limited
info@tesorogold.com.au

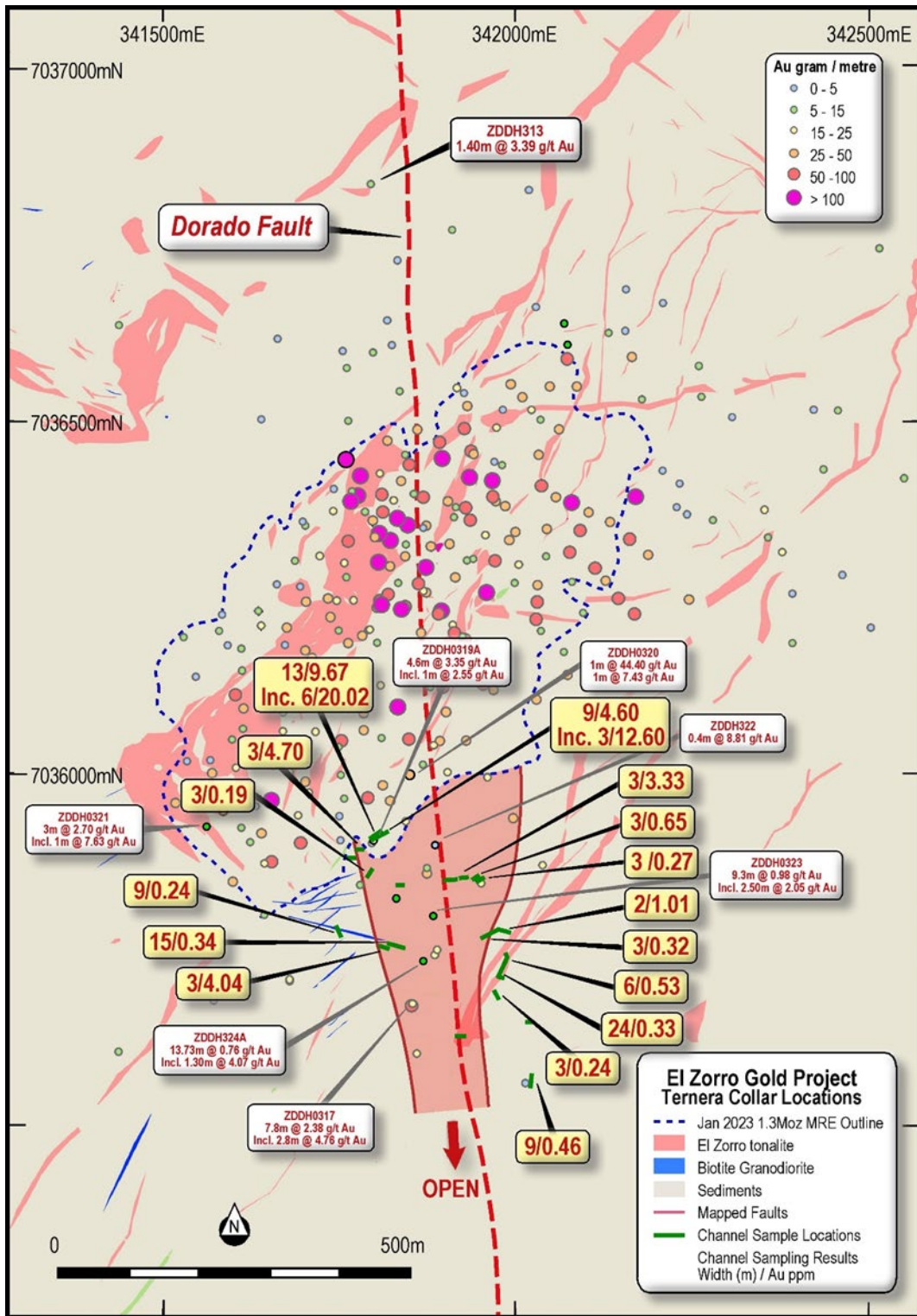


Figure 1 – Ternera South surface sampling results and locations. Drilling results refer to previously announced southern extension drilling (ASX Announcements 11 May 2023 and 21 June 2023)) Datum PSAD56 19S

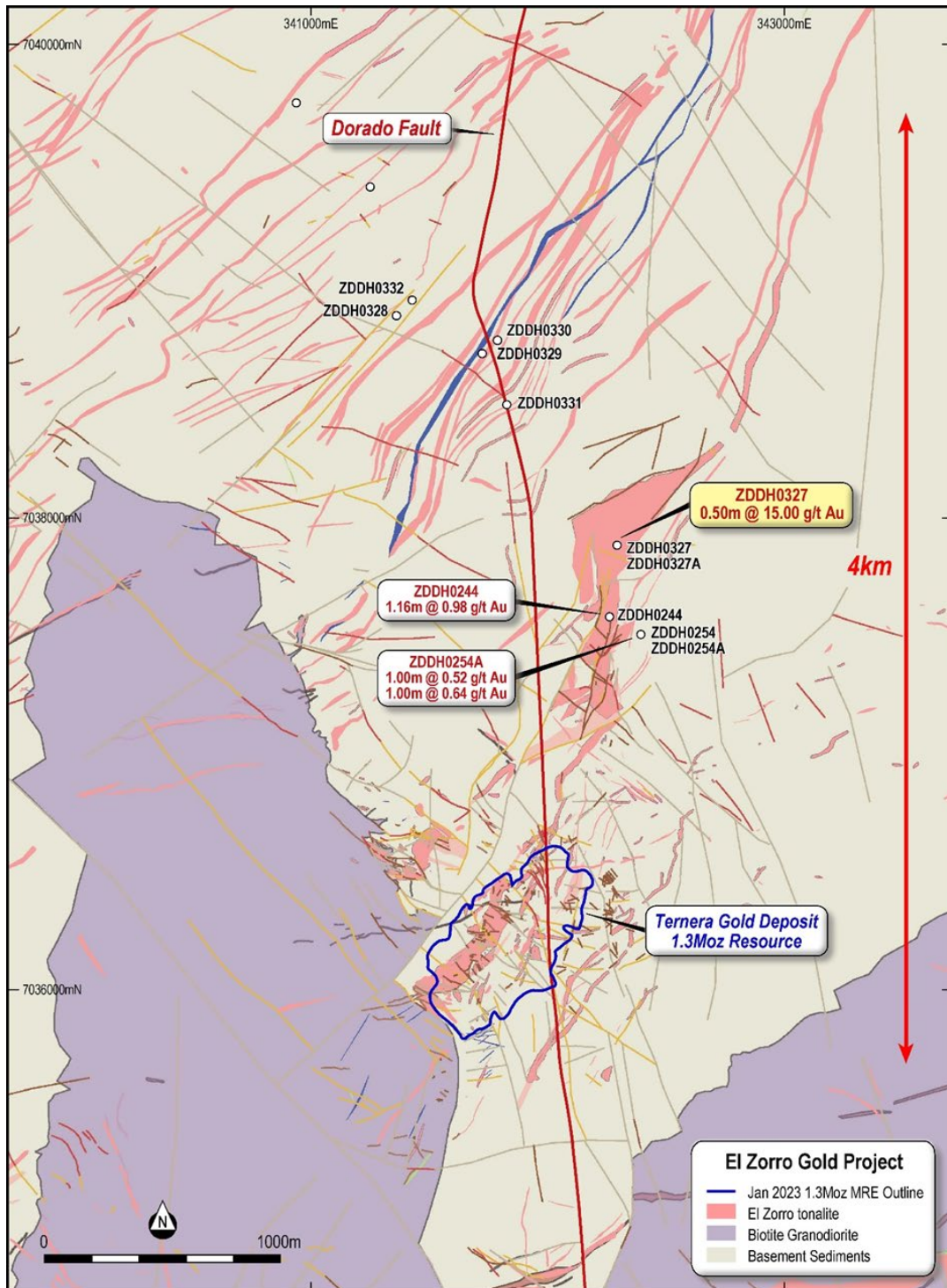


Figure 2 – Ternera to Kitsune geology map showing completed drilling at Toro Blanco and Kitsune. Holes ZDDH0244 and ZDDH0254A previously reported, refer ASX announcements 12 December 2021 and 4 February 2022. Datum PSDAD56 19S

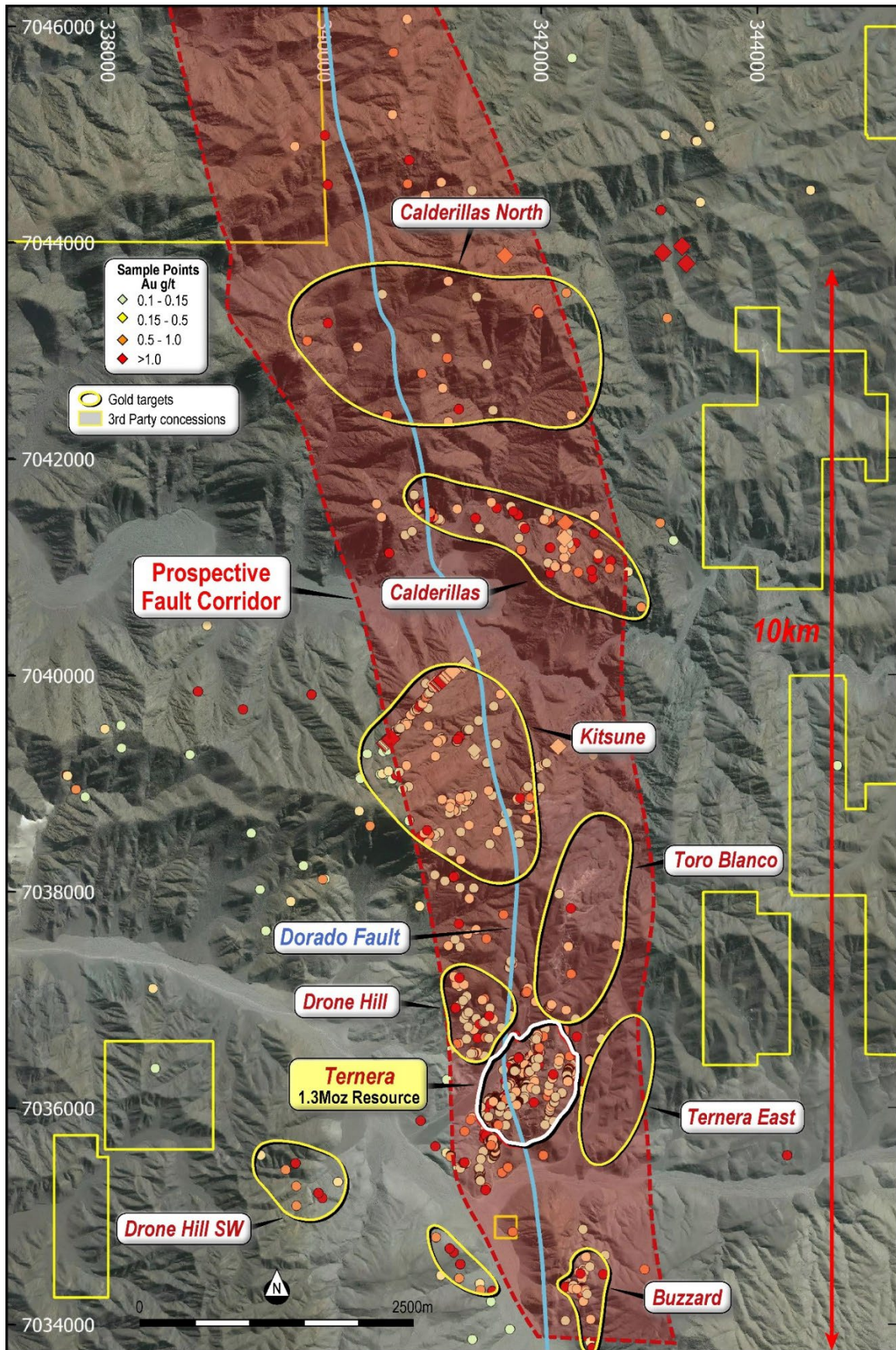


Figure 3 – El Zorro Gold Project surface sampling results for the Ternerera to Calderillas mineralised trend.

Table 1: Toro Blanco and Kitsune drillhole locations.

Hole ID	Hole Location			Hole Orientation		Drill Depth (m)	TARGET
	Northing	Easting	Elevation	Dip	Azimuth		
ZDDH00327	342290	7037884	890	-60	240	31.90	Toro Blanco (Abandoned)
ZDDH00327A	342290	7037883	890	-60	240	146.50	Toro Blanco
ZDDH00328	341359	7038855	690	-60	240	233.50	Kitsune
ZDDH00329	341724	7038695	699	-60	240	200.00	Kitsune
ZDDH00330	341788	7038750	745	-60	240	200.00	Kitsune
ZDDH00331	341828	7038480	830	-60	240	146.60	Kitsune
ZDDH00332	341426	7038921	642	-60	240	100.00	Kitsune
ZDDH00333	340938	7039755	791	-60	240	130.00	Kitsune
ZDDH00334	341249	7039400	684	-60	240	51.50	Kitsune (Abandoned)
ZDDH00335	340938	7039755	791	-60	0	140.10	Kitsune

About Tesoro

Tesoro Gold Limited was established with a strategy of acquiring, exploring, and developing mining projects in the Coastal Cordillera region of Chile. The Coastal Cordillera region is host to multiple world class copper and gold mines, has well established infrastructure service providers and an experienced mining workforce. Large areas of the Coastal Cordillera remain unexplored due to the unconsolidated nature of mining concession ownership, but Tesoro, via its in-country network and experience has been able to secure rights to a district scale gold project in-line with the Company's strategy. Tesoro's 95% owned Chilean subsidiary owns 85% of the El Zorro Gold Project.

Competent Persons Statements

The information in this report that relates to Exploration Results is based on information compiled by Mr Zeffron Reeves (B App Sc (Hons) Applied Geology) MBA, MAIG). Mr Reeves is a member of the Australian Institute of Geoscientists and a Director and shareholder of the Company. Mr Reeves has sufficient experience that is relevant to the style of mineralisation and type of deposit under consideration and to the activity which he is undertaking to qualify as a Competent Person as defined in the 2012 Edition of the Australasian Code for Reporting of Exploration Results, Mineral Resources and Ore Reserves. Mr Reeves consents to the inclusion in this report of the matters based on this information in the form and context in which it appears.

The information in this report that relates to Mineral Resources is based on information compiled by Mr Lynn Widenbar, a Competent Person who is a Member of The Australasian Institute of Mining and Metallurgy. Mr Widenbar is acting as an independent consultant to Tesoro Gold Limited. Mr Widenbar has sufficient experience that is relevant to the style of mineralisation and type of deposit under consideration, and to the activity being undertaken to qualify as a Competent Person as defined in the 2012 Edition of the 'Australasian Code for Reporting of Exploration Results, Mineral Resources and Ore Reserves'. The Company confirms that the form and context in which the Competent Person's findings are presented have not been materially modified from the original announcement on 9 March 2023.

Future Performance

This announcement may contain certain forward-looking statements and opinion. Forward-looking statements, including projections, forecasts and estimates, are provided as a general guide only and should not be relied on as an indication or guarantee of future performance and involve known and unknown risks, uncertainties, assumptions, contingencies and other important factors, many of which are outside the control of the Company and which are subject to change without notice and could cause the actual results, performance or achievements of the Company to be materially different from the future results, performance or achievements expressed or implied by such statements. Past performance is not necessarily a guide to future performance and no representation or warranty is made as to the likelihood of achievement or reasonableness of any forward-looking statements or other forecast. Nothing contained in this announcement, nor any information made available to you is, or and shall be relied upon as, a promise, representation, warranty or guarantee as to the past, present or the future performance of Tesoro.



APPENDIX 1: CONCESSION SCHEDULE**EL ZORRO GOLD PROJECT EXPLORATION CONCESSIONS (93.8%* Tesoro Mining Chile SpA)**

Concession Name	Date of Expiration	Size (ha)	Concession type
ZORRO 1B	10-august-2026	200	Exploration
ZORRO 2B	10-august-2026	200	Exploration
ZORRO 3B	10-august-2026	200	Exploration
ZORRO 4B	10-august-2026	100	Exploration
ZORRO 5B	10-august-2026	200	Exploration
ZORRO 6B	10-august-2026	200	Exploration
PUNTA DE DIAMENTE 1A	17-august-2025	200	Exploration
PUNTA DE DIAMENTE 2A	06-august-2025	300	Exploration
PUNTA DE DIAMENTE 3A	28-september-2025	300	Exploration
LA NEGRA COJA 1A	10-august-2025	200	Exploration
LA NEGRA COJA 2A	06-august-2025	300	Exploration
LA NEGRA COJA 3A	10-august-2025	300	Exploration
LA NEGRA COJA 4A	06-august-2025	200	Exploration
LA NEGRA COJA 5A	09-august-2025	300	Exploration
LA NEGRA COJA 6A	11-august-2025	200	Exploration
LA NEGRA COJA 7A	09-august-2025	300	Exploration
LA NEGRA COJA 8A	11-august-2025	300	Exploration
LA NEGRA COJA 9A	09-august-2025	200	Exploration
LA NEGRA COJA 10A	11-august-2025	300	Exploration
LA NEGRA COJA 11A	10-august-2025	300	Exploration
LA NEGRA COJA 12A	11-august-2025	200	Exploration
LA NEGRA COJA 13A	10-august-2025	300	Exploration
LA NEGRA COJA 14A	11-august-2025	300	Exploration
LA NEGRA COJA 15A	10-august-2025	300	Exploration
LA NEGRA COJA 16A	18-august-2025	200	Exploration
LA NEGRA COJA 17A	17-august-2025	300	Exploration
LA NEGRA COJA 18A	18-august-2025	300	Exploration
LA NEGRA COJA 19A	11-august-2025	200	Exploration
NICE BARREL 1	05-august-2025	200	Exploration
NICE BARREL 2	05-august-2025	300	Exploration
NICE BARREL 3	06-august-2025	200	Exploration
NICE BARREL 4	05-august-2025	200	Exploration
NICE BARREL 5	06-august-2025	200	Exploration
NICE BARREL 6	05-august-2025	200	Exploration
NICE BARREL 7	10-august-2025	200	Exploration
NICE BARREL 13	28-september-2025	300	Exploration
NICE BARREL 12	28-september-2025	200	Exploration
NICE BARREL 11	28-september-2025	300	Exploration
NICE BARREL 10	28-september-2025	200	Exploration
NICE BARREL 9	28-september-2025	300	Exploration
NICE BARREL 8	28-september-2025	200	Exploration

Concession Name	Date of Expiration	Size (ha)	Concession type
SIERRA PATACONES 1	Replaced by SIERRA PATACONES 1A in process	300	Exploration
SIERRA PATACONES 2	Replaced by SIERRA PATACONES 2A in process	300	Exploration
SIERRA PATACONES 3	Replaced by SIERRA PATACONES 3A in process	300	Exploration
SIERRA PATACONES 4	Replaced by SIERRA PATACONES 4A in process	300	Exploration
SIERRA PATACONES 5	Replaced by SIERRA PATACONES 5A in process	300	Exploration
SIERRA PATACONES 6	Replaced by SIERRA PATACONES 6A in process	300	Exploration
SIERRA PATACONES 7	Replaced by SIERRA PATACONES 7A in process	300	Exploration
SIERRA PATACONES 8	Replaced by SIERRA PATACONES 8A in process	300	Exploration
SIERRA PATACONES 9	Replaced by SIERRA PATACONES 9A in process	300	Exploration
SIERRA PATACONES 10	Replaced by SIERRA PATACONES 10A in process	300	Exploration
SIERRA PATACONES 11	Replaced by SIERRA PATACONES 11A in process	300	Exploration
SIERRA PATACONES 12	Replaced by SIERRA PATACONES 12A in process	300	Exploration
SIERRA PATACONES 13	Replaced by SIERRA PATACONES 13A in process	300	Exploration
SIERRA PATACONES 14	Replaced by SIERRA PATACONES 14A in process	300	Exploration
SIERRA PATACONES 15	Replaced by SIERRA PATACONES 15A in process	300	Exploration
SIERRA PATACONES 20	Replaced by SIERRA PATACONES 20A in process	300	Exploration
SIERRA PATACONES 19	Replaced by SIERRA PATACONES 19A in process	300	Exploration
SIERRA PATACONES 18	Replaced by SIERRA PATACONES 18A in process	300	Exploration
SIERRA PATACONES 17	Replaced by SIERRA PATACONES 17A in process	300	Exploration
SIERRA PATACONES 16	Replaced by SIERRA PATACONES 16A in process	300	Exploration
SIERRA PATACONES 21	Replaced by SIERRA PATACONES 21A in process	300	Exploration
SIERRA PATACONES 22	Replaced by SIERRA PATACONES 22A in process	300	Exploration
SIERRA PATACONES 23	Replaced by SIERRA PATACONES 23A in process	300	Exploration
SIERRA PATACONES 24	Replaced by SIERRA PATACONES 24A in process	300	Exploration
SIERRA PATACONES 25	Replaced by SIERRA PATACONES 25A in process	300	Exploration
SIERRA PATACONES 26	Replaced by SIERRA PATACONES 26A in process	300	Exploration
SIERRA PATACONES 27	Replaced by SIERRA PATACONES 27A in process	300	Exploration
SIERRA PATACONES 28	Replaced by SIERRA PATACONES 28A in process	300	Exploration
SIERRA PATACONES 29	Replaced by SIERRA PATACONES 29A in process	300	Exploration
SIERRA PATACONES 30	Replaced by SIERRA PATACONES 30A in process	300	Exploration
SIERRA PATACONES 31	Replaced by SIERRA PATACONES 31A in process	300	Exploration
SIERRA PATACONES 32	Replaced by SIERRA PATACONES 32A in process	300	Exploration
SIERRA PATACONES 33	Replaced by SIERRA PATACONES 33A in process	300	Exploration
SIERRA PATACONES 34	Replaced by SIERRA PATACONES 34A in process	300	Exploration
SIERRA PATACONES 35	Replaced by SIERRA PATACONES 35A in process	300	Exploration
SIERRA PATACONES 42	Replaced by SIERRA PATACONES 42A in process	300	Exploration
SIERRA PATACONES 41	Replaced by SIERRA PATACONES 41A in process	300	Exploration
SIERRA PATACONES 40	Replaced by SIERRA PATACONES 40A in process	300	Exploration
SIERRA PATACONES 39	Replaced by SIERRA PATACONES 39A in process	300	Exploration
SIERRA PATACONES 38	Replaced by SIERRA PATACONES 38A in process	300	Exploration

Concession Name	Date of Expiration	Size (ha)	Concession type
SIERRA PATACONES 37	Replaced by SIERRA PATACONES 37A in process	300	Exploration
SIERRA PATACONES 36	Replaced by SIERRA PATACONES 36A in process	300	Exploration
SIERRA PATACONES 43	Replaced by SIERRA PATACONES 43A in process	300	Exploration
SIERRA PATACONES 44	Replaced by SIERRA PATACONES 44A in process	300	Exploration
SIERRA PATACONES 45	Replaced by SIERRA PATACONES 45A in process	300	Exploration
SIERRA PATACONES 46	Replaced by SIERRA PATACONES 46A in process	300	Exploration
SIERRA PATACONES 47	Replaced by SIERRA PATACONES 47A in process	300	Exploration
SIERRA PATACONES 48	Replaced by SIERRA PATACONES 48A in process	300	Exploration
SIERRA PATACONES 49	Replaced by SIERRA PATACONES 49A in process	300	Exploration
SIERRA PATACONES 50	Replaced by SIERRA PATACONES 50A in process	300	Exploration
SIERRA PATACONES 51	Replaced by SIERRA PATACONES 51A in process	300	Exploration
SIERRA PATACONES 53	Replaced by SIERRA PATACONES 53A in process	300	Exploration
SIERRA PATACONES 54	Replaced by SIERRA PATACONES 54A in process	300	Exploration
SIERRA PATACONES 55	Replaced by SIERRA PATACONES 55A in process	300	Exploration
SIERRA PATACONES 56	Replaced by SIERRA PATACONES 56A in process	300	Exploration
SIERRA PATACONES 57	Replaced by SIERRA PATACONES 57A in process	300	Exploration
SIERRA PATACONES 62	Replaced by SIERRA PATACONES 62A in process	300	Exploration
SIERRA PATACONES 61	Replaced by SIERRA PATACONES 61A in process	300	Exploration
SIERRA PATACONES 60	Replaced by SIERRA PATACONES 60A in process	300	Exploration
SIERRA PATACONES 59	Replaced by SIERRA PATACONES 59A in process	300	Exploration
SIERRA PATACONES 58	Replaced by SIERRA PATACONES 58A in process	300	Exploration
SIERRA PATACONES 63	Replaced by SIERRA PATACONES 63A in process	300	Exploration
SIERRA PATACONES 64	Replaced by SIERRA PATACONES 64A in process	300	Exploration
SIERRA PATACONES 65	Replaced by SIERRA PATACONES 65A in process	300	Exploration
SIERRA PATACONES 66	Replaced by SIERRA PATACONES 66A in process	300	Exploration
SIERRA PATACONES 67	Replaced by SIERRA PATACONES 67A in process	300	Exploration
SIERRA PATACONES 68	Replaced by SIERRA PATACONES 68A in process	300	Exploration
SIERRA PATACONES 69	Replaced by SIERRA PATACONES 69A in process	300	Exploration
SIERRA PATACONES 70	Replaced by SIERRA PATACONES 70A in process	300	Exploration
SIERRA PATACONES 71	Replaced by SIERRA PATACONES 71A in process	300	Exploration
SIERRA PATACONES 72	Replaced by SIERRA PATACONES 72A in process	300	Exploration
SIERRA PATACONES 73	Replaced by SIERRA PATACONES 73A in process	300	Exploration
SIERRA PATACONES 74	Replaced by SIERRA PATACONES 74A in process	300	Exploration
SIERRA PATACONES 75	Replaced by SIERRA PATACONES 75A in process	300	Exploration
SIERRA PATACONES 76	Replaced by SIERRA PATACONES 76A in process	300	Exploration
SIERRA PATACONES 77	Replaced by SIERRA PATACONES 77A in process	300	Exploration
SIERRA PATACONES 84	Replaced by SIERRA PATACONES 84A in process	300	Exploration
SIERRA PATACONES 83	Replaced by SIERRA PATACONES 83A in process	300	Exploration
SIERRA PATACONES 82	Replaced by SIERRA PATACONES 82A in process	300	Exploration
SIERRA PATACONES 81	Replaced by SIERRA PATACONES 81A in process	300	Exploration

Concession Name	Date of Expiration	Size (ha)	Concession type
SIERRA PATACONES 80	Replaced by SIERRA PATACONES 80A in process	300	Exploration
SIERRA PATACONES 79	Replaced by SIERRA PATACONES 79A in process	300	Exploration
SIERRA PATACONES 78	Replaced by SIERRA PATACONES 78A in process	300	Exploration
SIERRA PATACONES 52	Replaced by SIERRA PATACONES 52A in process	300	Exploration
GOLD STORE 72	Replaced by GOLD STORE 72A in process	300	Exploration
GOLD STORE 71	Replaced by GOLD STORE 71A in process	300	Exploration
GOLD STORE 70	Replaced by GOLD STORE 70A in process	300	Exploration
GOLD STORE 69	Replaced by GOLD STORE 69A in process	300	Exploration
GOLD STORE 68	Replaced by GOLD STORE 68A in process	300	Exploration
GOLD STORE 67	Replaced by GOLD STORE 67A in process	300	Exploration
GOLD STORE 66	Replaced by GOLD STORE 66A in process	300	Exploration
GOLD STORE 1	Replaced by GOLD STORE 1A in process	300	Exploration
GOLD STORE 2	Replaced by GOLD STORE 2A in process	300	Exploration
GOLD STORE 3	Replaced by GOLD STORE 3A in process	300	Exploration
GOLD STORE 4	Replaced by GOLD STORE 4A in process	300	Exploration
GOLD STORE 5	Replaced by GOLD STORE 5A in process	300	Exploration
GOLD STORE 6	Replaced by GOLD STORE 6A in process	300	Exploration
GOLD STORE 7	Replaced by GOLD STORE 7A in process	300	Exploration
GOLD STORE 8	Replaced by GOLD STORE 8A in process	300	Exploration
GOLD STORE 9	Replaced by GOLD STORE 9A in process	300	Exploration
GOLD STORE 10	Replaced by GOLD STORE 10A in process	300	Exploration
GOLD STORE 11	Replaced by GOLD STORE 11A in process	300	Exploration
GOLD STORE 12	Replaced by GOLD STORE 12A in process	300	Exploration
GOLD STORE 13	Replaced by GOLD STORE 13A in process	300	Exploration
GOLD STORE 14	Replaced by GOLD STORE 14A in process	300	Exploration
GOLD STORE 15	Replaced by GOLD STORE 15A in process	300	Exploration
GOLD STORE 16	Replaced by GOLD STORE 16A in process	300	Exploration
GOLD STORE 17	Replaced by GOLD STORE 17A in process	300	Exploration
GOLD STORE 18	Replaced by GOLD STORE 18A in process	300	Exploration
GOLD STORE 19	Replaced by GOLD STORE 19A in process	300	Exploration
GOLD STORE 20	Replaced by GOLD STORE 20A in process	300	Exploration
GOLD STORE 21	Replaced by GOLD STORE 21A in process	300	Exploration
GOLD STORE 22	Replaced by GOLD STORE 22A in process	300	Exploration
GOLD STORE 23	Replaced by GOLD STORE 23A in process	300	Exploration
GOLD STORE 24	Replaced by GOLD STORE 24A in process	300	Exploration
GOLD STORE 25	Replaced by GOLD STORE 25A in process	300	Exploration
GOLD STORE 26	Replaced by GOLD STORE 26A in process	300	Exploration
GOLD STORE 27	Replaced by GOLD STORE 27A in process	300	Exploration
GOLD STORE 28	Replaced by GOLD STORE 28A in process	300	Exploration
GOLD STORE 29	Replaced by GOLD STORE 29A in process	300	Exploration
GOLD STORE 30	Replaced by GOLD STORE 30A in process	300	Exploration
GOLD STORE 36	Replaced by GOLD STORE 36A in process	300	Exploration
GOLD STORE 35	Replaced by GOLD STORE 35A in process	300	Exploration
GOLD STORE 34	Replaced by GOLD STORE 34A in process	300	Exploration
GOLD STORE 33	Replaced by GOLD STORE 33A in process	300	Exploration
GOLD STORE 37	Replaced by GOLD STORE 37A in process	300	Exploration

Concession Name	Date of Expiration	Size (ha)	Concession type
GOLD STORE 38	Replaced by GOLD STORE 38A in process	300	Exploration
GOLD STORE 39	Replaced by GOLD STORE 39A in process	300	Exploration
GOLD STORE 40	Replaced by GOLD STORE 40A in process	300	Exploration
GOLD STORE 41	Replaced by GOLD STORE 41A in process	300	Exploration
GOLD STORE 42	Replaced by GOLD STORE 42A in process	300	Exploration
GOLD STORE 43	Replaced by GOLD STORE 43A in process	300	Exploration
GOLD STORE 44	Replaced by GOLD STORE 44A in process	300	Exploration
GOLD STORE 45	Replaced by GOLD STORE 45A in process	300	Exploration
GOLD STORE 46	Replaced by GOLD STORE 46A in process	300	Exploration
GOLD STORE 47	Replaced by GOLD STORE 47A in process	300	Exploration
GOLD STORE 48	Replaced by GOLD STORE 48A in process	300	Exploration
GOLD STORE 49	Replaced by GOLD STORE 49A in process	300	Exploration
GOLD STORE 50	Replaced by GOLD STORE 50A in process	300	Exploration
GOLD STORE 51	Replaced by GOLD STORE 51A in process	300	Exploration
GOLD STORE 52	Replaced by GOLD STORE 52A in process	300	Exploration
GOLD STORE 53	Replaced by GOLD STORE 53A in process	300	Exploration
GOLD STORE 54	Replaced by GOLD STORE 54A in process	300	Exploration
GOLD STORE 55	Replaced by GOLD STORE 55A in process	300	Exploration
GOLD STORE 56	Replaced by GOLD STORE 56A in process	200	Exploration
GOLD STORE 57	Replaced by GOLD STORE 57A in process	300	Exploration
GOLD STORE 58	Replaced by GOLD STORE 58A in process	300	Exploration
GOLD STORE 59	Replaced by GOLD STORE 59A in process	300	Exploration
GOLD STORE 60	Replaced by GOLD STORE 60A in process	300	Exploration
GOLD STORE 61	Replaced by GOLD STORE 61A in process	300	Exploration
GOLD STORE 62	Replaced by GOLD STORE 62A in process	300	Exploration
GOLD STORE 63	Replaced by GOLD STORE 63A in process	300	Exploration
GOLD STORE 64	Replaced by GOLD STORE 64A in process	300	Exploration
GOLD STORE 65	Replaced by GOLD STORE 65A in process	300	Exploration
VACAS FLACAS 1	26-October-2026	300	Exploration
VACAS FLACAS 2	26-October-2026	300	Exploration
VACAS FLACAS 5	26-October-2026	300	Exploration
VACAS FLACAS 6	26-October-2026	300	Exploration
VACAS FLACAS 7	26-October-2026	300	Exploration
VACAS FLACAS 8	26-October-2026	300	Exploration
VACAS FLACAS 9	26-October-2026	300	Exploration
VACAS FLACAS 10	26-October-2026	300	Exploration
VACAS FLACAS 11	26-October-2026	300	Exploration
VACAS FLACAS 12	26-October-2026	300	Exploration
VACAS FLACAS 13	26-October-2026	300	Exploration
VACAS FLACAS 14	26-October-2026	300	Exploration
VACAS FLACAS 15	26-October-2026	300	Exploration
VACAS FLACAS 16	26-October-2026	300	Exploration
VACAS FLACAS 17	26-October-2026	300	Exploration
VACAS FLACAS 18	26-October-2026	300	Exploration
VACAS FLACAS 19	26-October-2026	300	Exploration
VACAS FLACAS 20	26-October-2026	300	Exploration

Concession Name	Date of Expiration	Size (ha)	Concession type
VACAS FLACAS 21	26-October-2026	300	Exploration
VACAS FLACAS 22	26-October-2026	300	Exploration
VACAS FLACAS 23	26-October-2026	300	Exploration
VACAS FLACAS 24	26-October-2026	300	Exploration
VACAS FLACAS 25	26-October-2026	300	Exploration
VACAS FLACAS 28	26-October-2026	300	Exploration
VACAS FLACAS 27	26-October-2026	300	Exploration
VACAS FLACAS 26	26-October-2026	300	Exploration
VACAS FLACAS 3	26-October-2026	300	Exploration
VACAS FLACAS 4	26-October-2026	300	Exploration
Bloody Good Shot 13A	27-September-2026	200	Exploration
Bloody Good Shot 12A	27-September-2026	200	Exploration
Bloody Good Shot 11A	27-September-2026	200	Exploration
Bloody Good Shot 10A	27-September-2026	300	Exploration
Bloody Good Shot 9A	28-September-2026	300	Exploration
Bloody Good Shot 8A	5-October-2026	200	Exploration
Bloody Good Shot 7A	28-September-2026	100	Exploration
Bloody Good Shot 6A	5-October-2026	200	Exploration
Bloody Good Shot 5A	29-September-2026	200	Exploration
Bloody Good Shot 4A	29-September-2026	300	Exploration
Bloody Good Shot 3A	3-October-2026	300	Exploration
Bloody Good Shot 2A	3-October-2026	300	Exploration
Bloody Good Shot 1A	3-October-2026	300	Exploration
Buzzard 1, 1 al 300	NA-Constituted	300	Exploitation
Buzzard 2, 1 al 300	NA-Constituted	300	Exploitation
Buzzard 3, 1 al 300	NA-Constituted	300	Exploitation
Buzzard 4, 1 al 300	NA-Constituted	300	Exploitation
LEON DOS 1-30	NA-Constituted	300	Exploitation
LEON UNO 1-30	NA-Constituted	300	Exploitation
LAS COQUETAS 1/10	NA-Constituted	100	Exploitation
PATON DOS 1/29	NA-Constituted	230	Exploitation
PATON UNO 1/29	NA-Constituted	240	Exploitation
CALDERILLA 1, 1 AL 10	NA-Constituted	100	Exploitation
CALDERILLA 2, 1 AL 10	NA-Constituted	100	Exploitation
CALDERILLA 3, 1 AL 10	NA-Constituted	100	Exploitation
CALDERILLA 4, 1 AL 10	NA-Constituted	100	Exploitation
CALDERILLA 5, 1 AL 10	NA-Constituted	100	Exploitation
CALDERILLA 6, 1 AL 10	NA-Constituted	100	Exploitation
CALDERILLA 7, 1 AL 10	NA-Constituted	100	Exploitation
CALDERILLA 8, 1 AL 10	NA-Constituted	100	Exploitation
CALDERILLA 9, 1 AL 10	NA-Constituted	100	Exploitation
CALDERILLA 10, 1 AL 10	NA-Constituted	100	Exploitation
CALDERILLA 11, 1 AL 10	NA-Constituted	100	Exploitation
CALDERILLA 12, 1 AL 10	NA-Constituted	100	Exploitation
CALDERILLA 13, 1 AL 10	NA-Constituted	100	Exploitation
CALDERILLA 14, 1 AL 10	NA-Constituted	100	Exploitation

Concession Name	Date of Expiration	Size (ha)	Concession type
CALDERILLA 15, 1 AL 10	NA-Constituted	100	Exploitation
CALDERILLA 16, 1 AL 10	NA-Constituted	100	Exploitation
CALDERILLA 17, 1 AL 10	NA-Constituted	76	Exploitation
CALDERILLA 18, 1 AL 10	NA-Constituted	36	Exploitation
CALDERILLA 19, 1 AL 10	NA-Constituted	100	Exploitation
CALDERILLA 20, 1 AL 10	NA-Constituted	91	Exploitation
CALDERILLA 21, 1 AL 10	NA-Constituted	76	Exploitation
CALDERILLA 22, 1 AL 10	NA-Constituted	100	Exploitation
CALDERILLA 23, 1 AL 10	NA-Constituted	100	Exploitation
TAKEO SEGUNDA 1 AL 20	NA-Constituted	100	Exploitation
TAKEO TERCERA 1 AL 20	NA-Constituted	100	Exploitation

Notes:

1. All concessions noted as "application" are moving through the application process and there is no legal impediment to them being granted.
2. Concessions noted as in process are being converted from exploration concessions to exploitation concessions and there is no legal impediment to them being granted.
3. Concessions noted as being in renewal process are exploration concessions under a renewal for a second term of two years and there is no legal impediment to them being renewed.
4. Constituted exploitation concessions have no expiry.