



**WESTERN YILGARN** NL



# Exploring the Yilgarn Craton, a global epicentre of mineral wealth

Investor Presentation – November 2023

# Corporate Snapshot

## Corporate Overview

Shares on issue	79,372,506*
Listed Options on issue	13,237,497
Unlisted Options on issue	48,268,720**
Share price @ 25 <sup>th</sup> October 2023	\$0.075
Market Cap @ 25 <sup>th</sup> October 2023	\$5.9m
Cash @ 30 <sup>th</sup> September 2023	\$2 million

\* Includes 29,715,002 subject to escrow restrictions until 12 April 2024

\*\* Varying exercise prices and expiry dates with some options subject to escrow restrictions.

## Share Price Year to Date



## Board of Directors



**Peter Lewis**

Non-Executive Chair  
Peter is a QLD-based businessman with a long career in the property sector. He is a former Director of Ray White and Richard Ellis Group.



**John Traicos**

Non-Exec Director  
John is a lawyer with 30+ years' experience in legal and corporate affairs. He has acted as a commercial and legal manager to several resources companies.



**Peter Michael**

Non-Exec Director  
Peter has 20+ years' experience in the property sector. He is also a Non-Executive Director of Argent Minerals (ASX: ARD).

# Why Invest in WYX?

*WYX's strategy is to invest, develop, vend or surrender*

- 5 early-stage WA assets with significant upside for Ni-Cu-Co, Au and Li mineralisation
  1. Bulga Ni-Cu-Li-Au
  2. Julimar West Ni-Co-PGE
  3. Boodanoo Li-Ni
  4. Sylvania Li-Cu-Au
  5. Melbourne Cu-Au
- Low volume of shares on issue with minimal risk of dilution
- Strong portfolio of projects with strategy to maintain inventory
- Majors now targeting the Ida Province include Mineral Resources, Rio Tinto and Hancock Prospecting





# Bulga

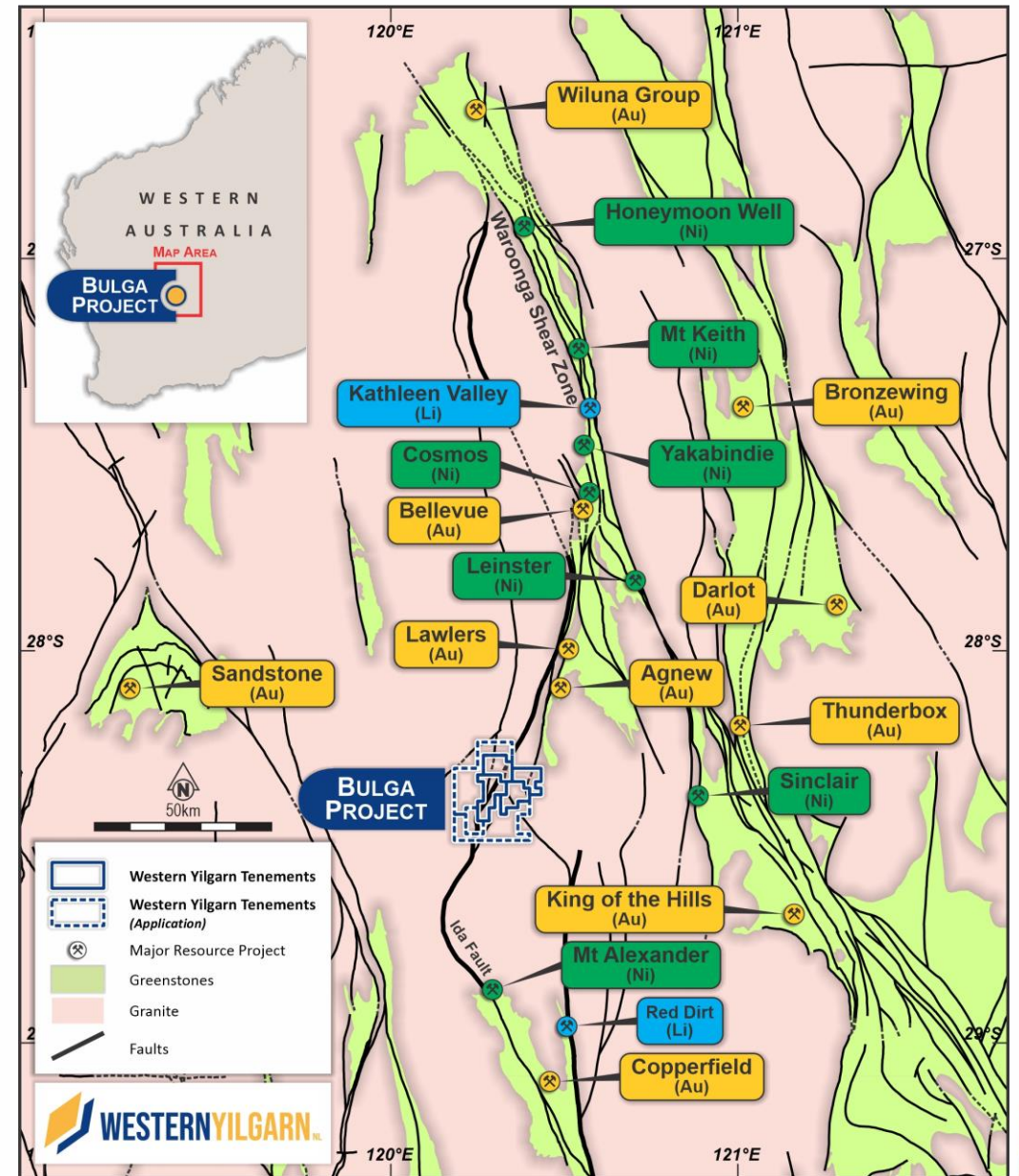
Ni-Cu-Li-Au

*“Value uncovered in an underexplored region.”*



# Bulga Project

- Most advanced project in WYX portfolio
- Review of historical drilling results highlighted extensive nickel mineralisation
- Broad zones of nickel-cobalt mineralisation varying from 2m to 48m delineated by aircore and RC
- Mineralised horizons contain anomalous platinum and palladium credits
- Intercepts located over a 9km trend containing a highly fertile and unexplored ultramafic belt
- Company has expanded its tenement holding from 154km<sup>2</sup> to 477km<sup>2</sup>
- Currently infill drilling with 1338 holes on a 100m x 200m pattern

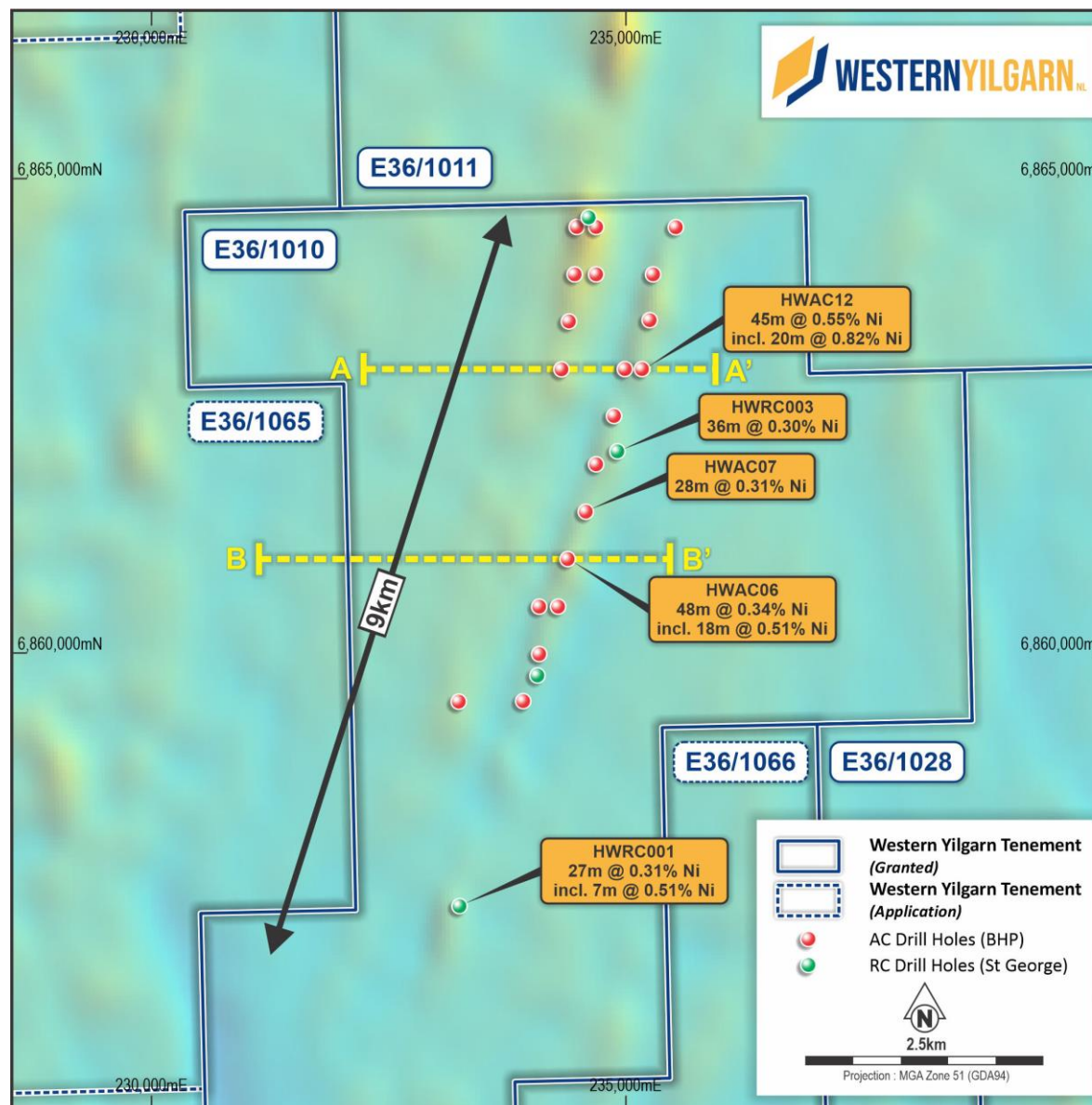




# Bulga Project

## Multi-Phase Drilling Program

- Multiple targets confirmed:
  - Three LCT pegmatite targets
  - Five Ni-Cu-PGE targets
  - One lower order gold targets
- Phase 1 Auger drilling program targeted potential LCT pegmatites within a 7km by 2km anomaly
- Ni-Co-Cu target defined over 2km length coinciding with geophysics targets
- Phase 2 auger drilling geochemical program complete with over 2,000 samples at Intertek Laboratories
- Auger geochemistry programme continues
- Planning underway for RC drilling program



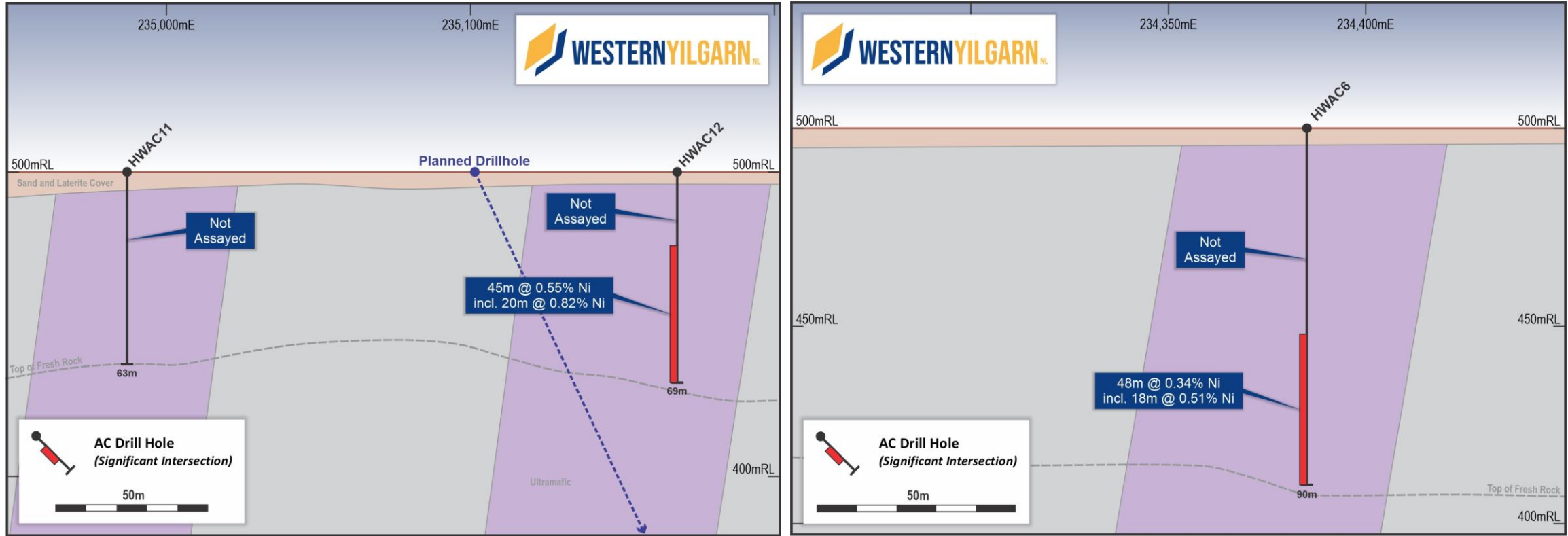
# Bulga Project

Significant results from historic drilling define exciting intercepts including:

- HWAC12:
  - 45m @ 0.55% Ni, 229 ppm Co from 24m including 20m @ 0.83% Ni, 312 ppm Co from 24m
- HWAC06:
  - 48m @ 0.34% Ni, 174 ppm Co from 48m including 18m @ 0.51% Ni, 246 ppm Co from 48m
- HWRC001:
  - 27m @ 0.31% Ni, 177 ppm Co from 56m including 7m @ 0.51% Ni, 334 ppm Co from 56m



# Bulga Project



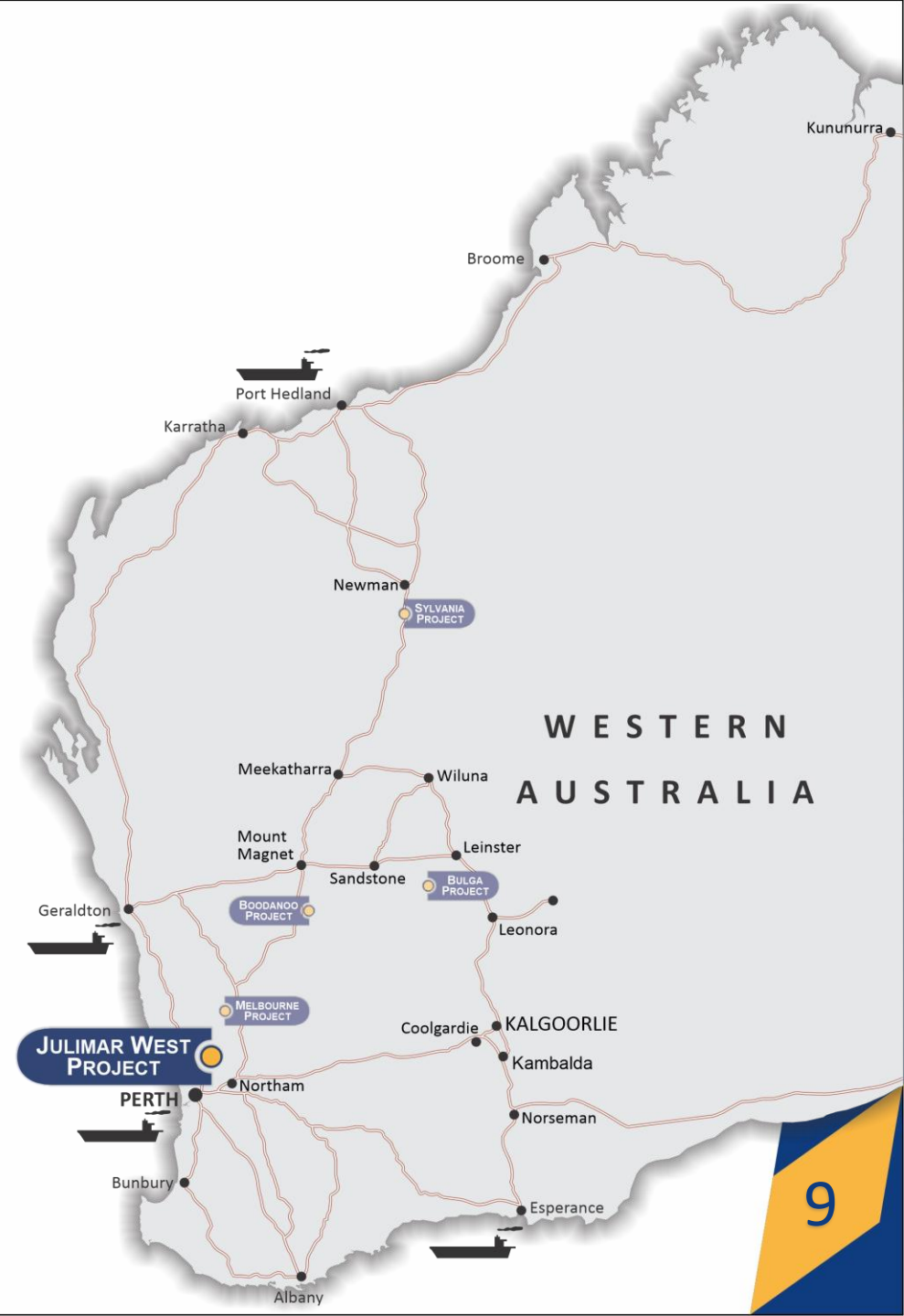
Cross Sections





# Julimar West Ni-Co-PGE

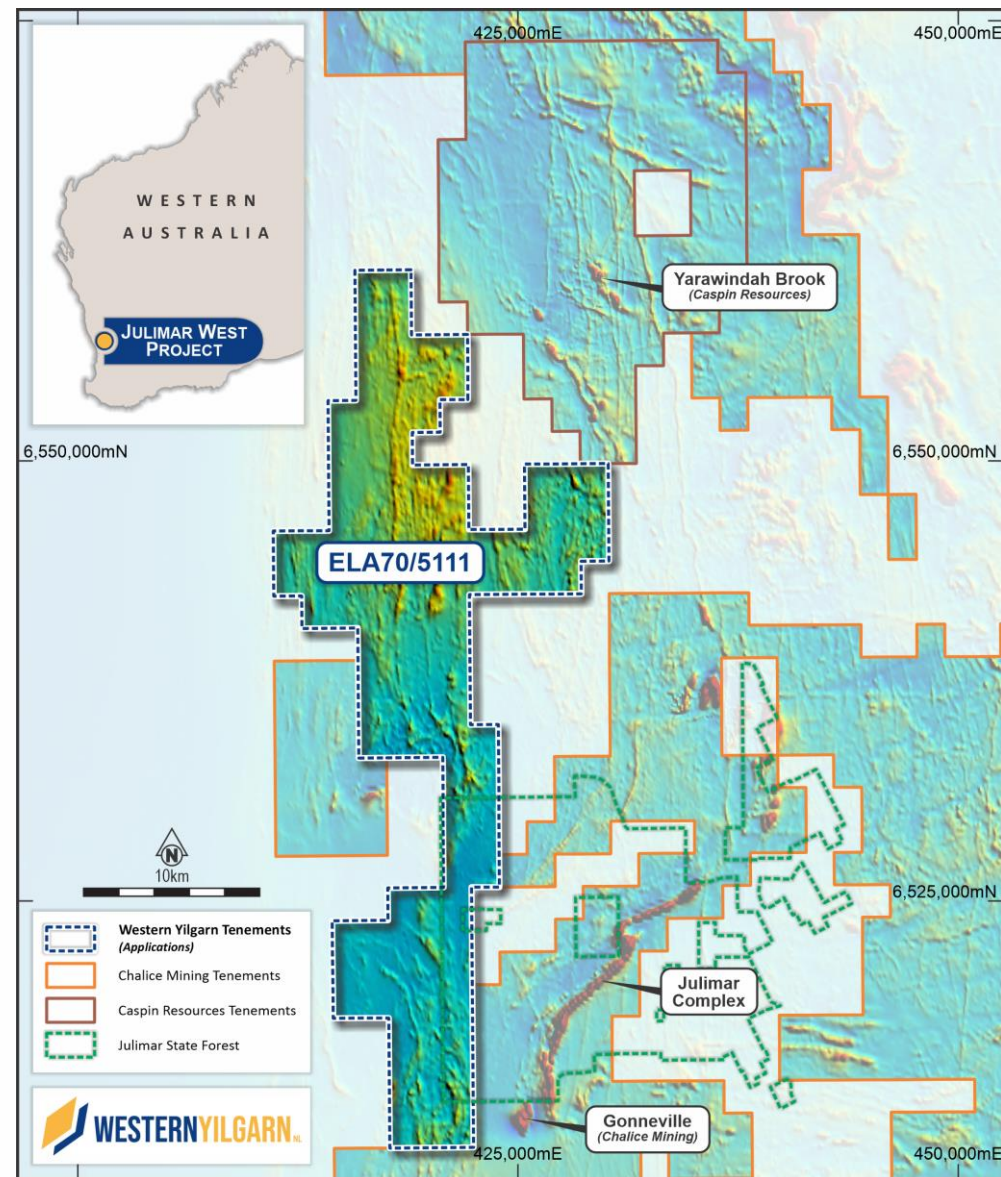
*“On Perth’s  
Doorstep.”*



# Julimar West

## Prime location close to a major discovery

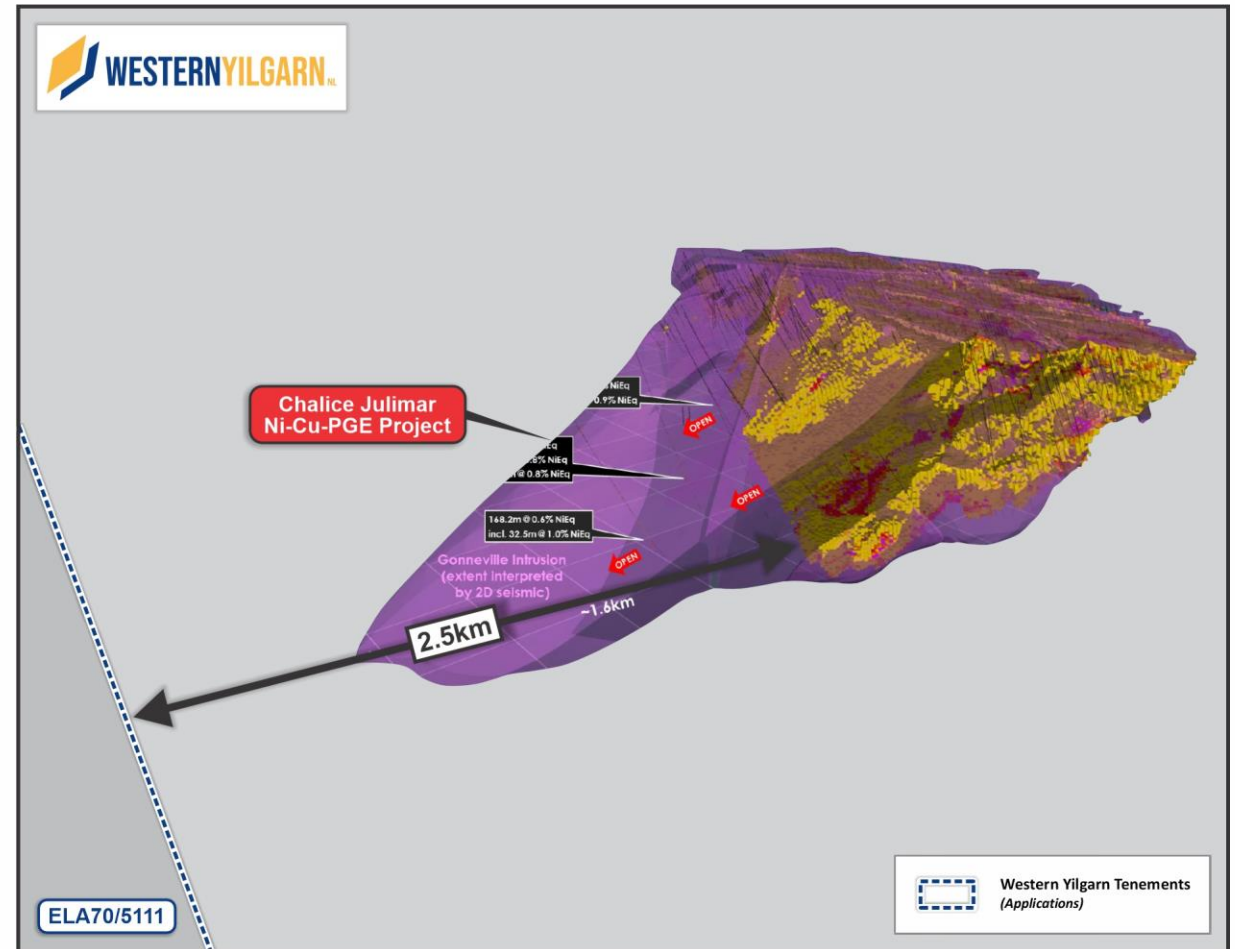
- Exploration program to commence following grant of ELAs
- 349km<sup>2</sup> project area within Darling Ranges, 75km from Perth
- Lease boundary 2.5km from Chalice Mining (ASX: CHN) Gonneville discovery
- Potential for Gonneville Intrusion continuing at depth into Julimar West
- Desktop review of historic data highlights multiple exciting targets



# Julimar West

## Desktop Review Completed

- Review included CHN announcements and WAMEX data from DMIRS
- Key targets defined include:
  - Potential for Gonneville Intrusion continuing at depth into Julimar West Project
  - Repetitions of Gonneville mineralisation interpreted in WYX ground
  - Mineralised pegmatites identified in field
  - GSWA grab samples returned significant Tin, Niobium and Tantalum results along with anomalous Lithium
  - Potential for gold in northern section

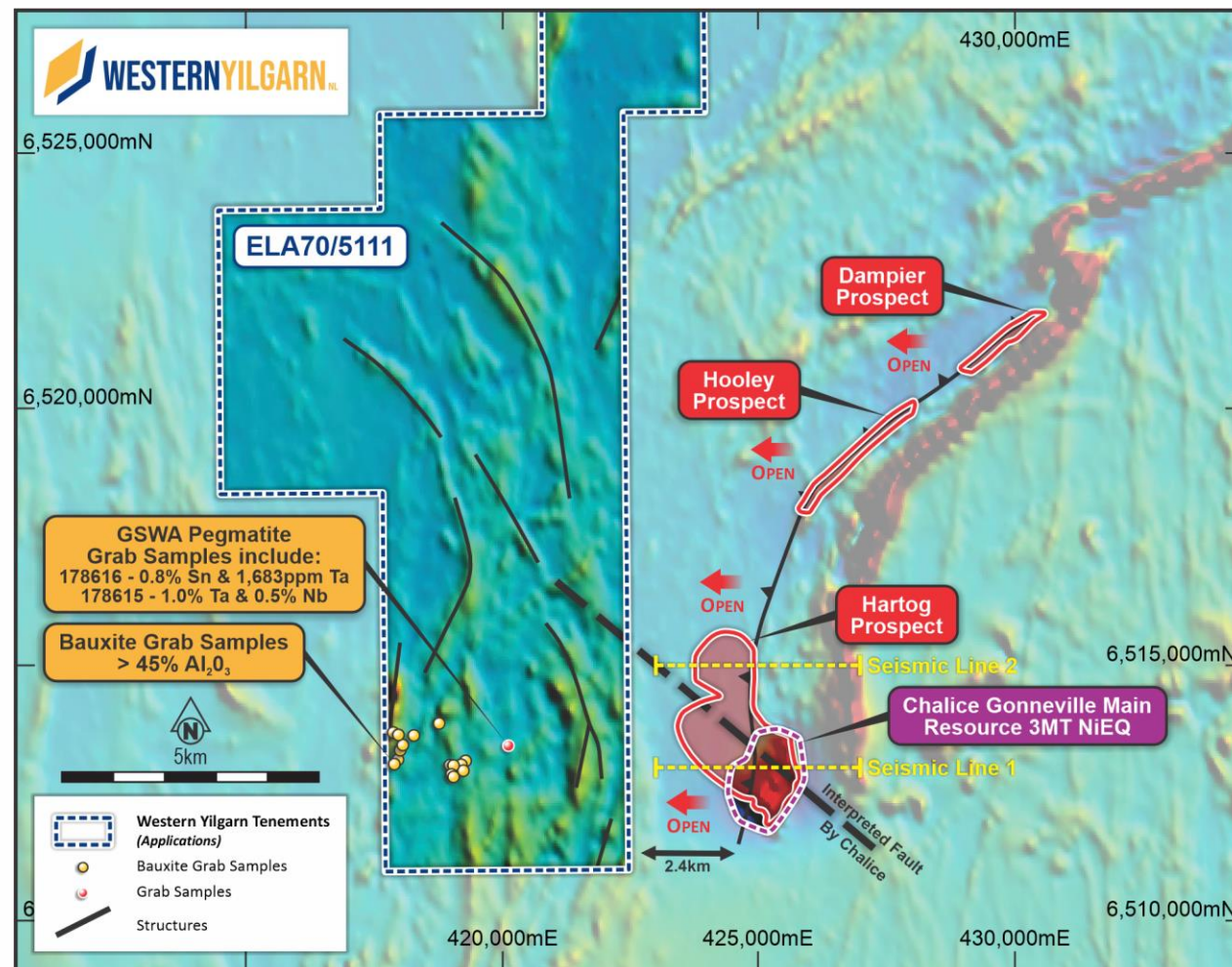




# Julimar West

## Upcoming Exploration Program

- Staged program includes:
  - AEM 400m x 200m massive sulphide conductors
  - A first pass Soil or Auger Surface Geochemistry program on a regional 400m by 100m
  - Geophysics: Magnetics, Gravity Survey and Potential Seismic survey
- Drilling to follow targets defined by above program
- Program subject to grant of Exploration Lease ELA 70/5111



# Boodanoo

Li-Ni

*“LCT Target Identified.”*

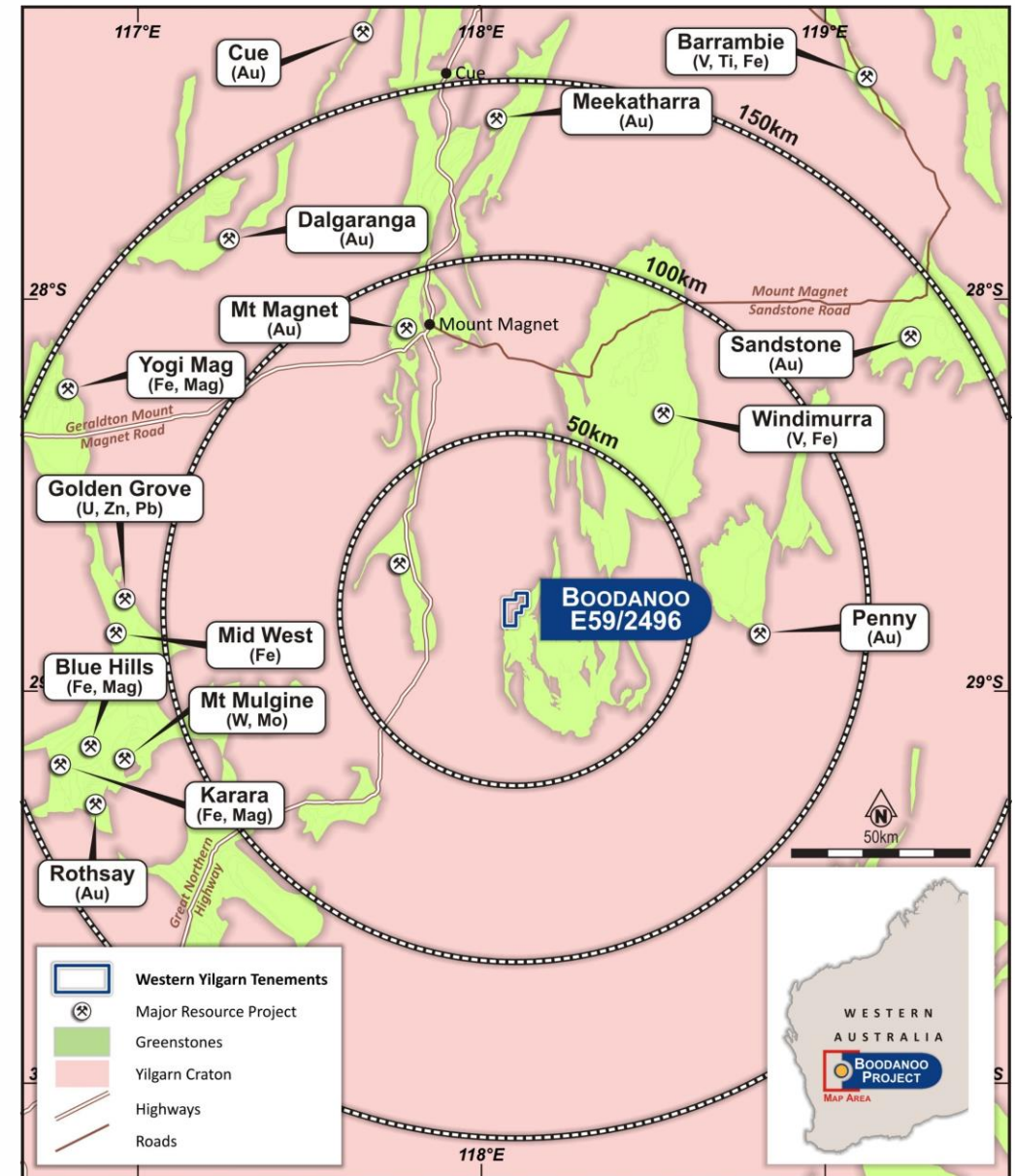




# Boodanoo Project

## WYX second most explored project

- ~90km south of Mount Magnet comprising two granted exploration licences (E59/2496) for ~51km<sup>2</sup>
- Two-phase (519 holes) Auger Geochemistry program completed
- Multiple targets highlighted
  - Potential gold target associated with main North/South shear zone
  - Lithium bearing pegmatite target identified over a 3km x 2km anomaly





# Boodanoo Project

## Auger Geochemistry results

- Two-phase, 519-hole auger program completed
- Assays confirm ~2km long Lithium Caesium Tantalum (LCT) target
- Holes located on 1,600m lines spaced 100m apart
- Holes drilled between 2m and 10m in depth
- Results under further review prior to next phase of exploration
- Infill and extension auger geochemistry campaign planned

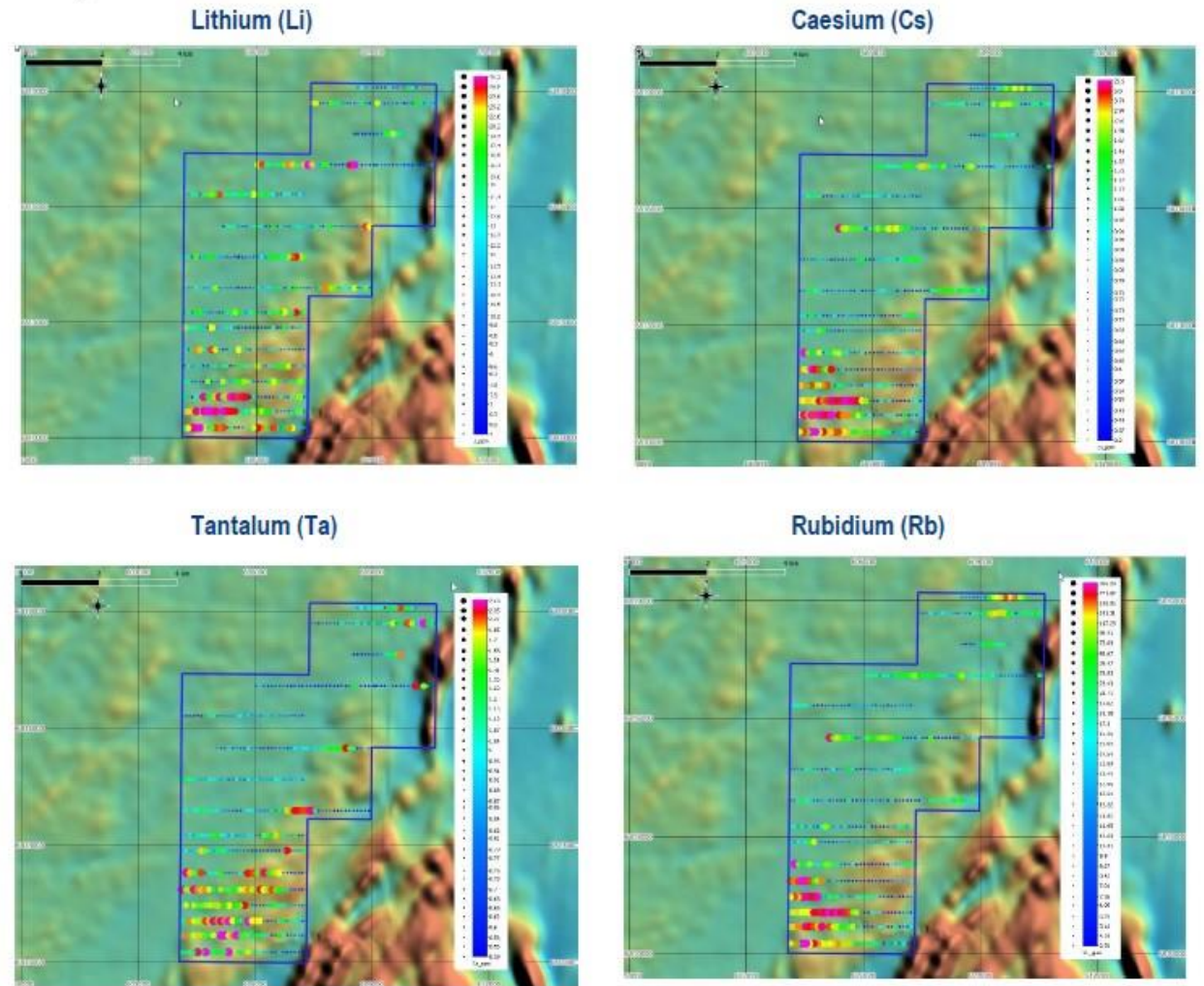


Figure 3. LCT Pegmatite target (Pathfinder elements)



# Sylvania

Li-Cu-Au

*“High potential in an underexplored location.”*





# Sylvania Project

- Located in Tier 1 mining region of the Pilbara, Western Australia
- 370km<sup>2</sup> landholding comprises two non-contiguous leases – Sylvania North and Sylvania South
- Site access finalised with Aboriginal custodians with excellent synergies developed
- Observation and stream sediment sampling completed at Sylvania South. Samples in Lab
- Low impact site activities completed in October 2023
- Follow-up of historical exploration eagerly anticipated





# Sylvania Project

## Sampling Program – Sylvania South Project

- WYX and Karlka Nyiyiparli Aboriginal Corp (KNAC) team completes observation and stream sediment sampling
- Collaborative partnership with KNAC expanded into field operations
- Excellent synergy with Traditional Owners
- 31 samples uplifted for assay giving 90% coverage of the permit
- Sylvania South (E52/4177) covers an area of 235km<sup>2</sup>



# Management & Consultants



**Gavin Rutherford**  
General Manager



**Kevin Woodthorpe**  
Commercial Manager



**Melissa Chapman**  
Joint Company Secretary



**Beau Nicholls**  
Principal Consultant



**Stephen Sudgen**  
Geochemist



**Kim Frankcombe**  
Geophysicist





# Contact Us

## **GAVIN RUTHERFORD**

General Manager

+61 8 6166 9107

[ir@westernyilgarn.com.au](mailto:ir@westernyilgarn.com.au)

## **BEN CREAGH**

Media & Investor Relations

+61 (0) 417 464 233

[benc@nwrcommunications.com.au](mailto:benc@nwrcommunications.com.au)

Subscribe to our mailing list at:

[westernyilgarn.com.au/](http://westernyilgarn.com.au/)

**ASX: WYX**