

ASX Announcement | 31 October 2023

Quarterly Activities Report – 30 September 2023

Loyal Lithium Limited (**ASX:LLI**) (**Loyal Lithium, LLI** or the **Company**) is pleased to provide its Quarterly Activity Report for period ended 30 September 2023 (**Quarter** or **Reporting Period**).

CORPORATE HIGHLIGHTS

- Continued execution on LLI's strategy with a strong emphasis on North American lithium.
- Recommenced trading on the ASX following the lodgement of its re-compliance prospectus and successful \$1.5m re-compliance capital raise for the purposes of satisfying Chapters 1 and 2 of the ASX Listing Rules and to satisfy the ASX requirements for re-admission to the Official List.
- Successful institutional capital raise of \$5m (before costs).
- As at 30 September 2023, LLI held A\$9.6m in cash.

OPERATIONS HIGHLIGHTS

HIDDEN LAKE LITHIUM PROJECT:

- Acquisition of a controlling majority stake in the advanced, high-grade Hidden Lake Lithium Project, Yellowknife, Northwest Territories, Canada.
- Acquisition formalises a Joint Venture arrangement between Loyal Lithium and Patriot Battery Metals (ASX:PMT, TSXV:PMET) - minority owner of 5 of the 6 claims.
- 2,500-hectare land position across 6 contiguous claims containing 14 mapped lithium spodumene bearing pegmatite outcrops, with the 4 drill-tested outcrops spanning a cumulative significant strike length of 2,250m.
- These 4 drill-tested pegmatite outcrops were drilled in 2018 to a limited depth of 30-50 metres, with all 10 drill holes intercepting high-grade spodumene of up to 1.81% Li₂O.
- Comprehensive 2023 summer field exploration program completed resulting in the discovery of six additional spodumene zones, with assay results extending the cumulative pegmatite surface mineralisation by approximately 1,000m to 3,250m - a notable 44% increase.
- High-resolution orthographic imagery and LiDAR data received allowing further refinement of drill targets and potential site infrastructure locations.
- Metallurgical test work indicates consistency across spodumene rich dykes with very simple mineralogy of predominantly coarse-grained spodumene, quartz, and feldspars, with low impurities (<0.25% FeO).
- Dense Media Separation (DMS) pilot plant produced a high-grade concentrate of 6.11% Li₂O

from a 400kg bulk sample with minimal loss to tailings.

- Strategically located 45km east of Yellowknife, with notable infrastructure connecting the Project to the rest of Canada:
 - Domestic airport located in Yellowknife with daily connections;
 - All-weather highway – year-round access to Calgary, Vancouver and Edmonton; and
 - Heavy rail terminal and seaport facilities within trucking distance

TRIESTE LITHIUM PROJECT:

- Comprehensive 2023 summer field program completed, formulated from inputs from the Company's extensive winter program, including a regional/local geological assessment, review of historical data (outcrop, geochemical, till, and lake samples), high-resolution aeromagnetic analysis, and multispectral satellite data analysis.
- Five spodumene bearing pegmatite dykes discovered, with aligned implied continuous outcrops, within a 6 km² area to the south of the Trieste Greenstone Belt, situated within a metasediment host.
- A drilling program up to 2,000m, targeting Dyke #01, was fast-tracked and commenced prior to the end of the quarter, with results to assist in planning of a more substantial drilling campaign during the Canadian winter.
- Collaboration MOU signed with Winsome Resources (ASX:WR1) on a range of objectives mutually applicable to the companies Trieste greenstone lithium projects, demonstrating commitment to minimising environmental and stakeholder impacts of operations occurring within the region.
- Loyal Lithium holds the largest land position in the highly prospective Trieste Greenstone Belt, with the Trieste Lithium Project covering 251km².

SCOTTY LITHIUM PROJECT:

- Assays from the June quarter drill campaign confirmed the presence of a mineralised lithium basin at the 100% owned Scotty Lithium Project, with an average grade of 1,120ppm lithium at a 700ppm lithium cut-off-grade.
- The drilling assays returned spectacular results with a peak lithium value of 4,007ppm.
- Drilling results and geophysical data were used to create a 3D model and robust Exploration Target, with a range of 460 million tonnes (Mt) at 1,145 ppm to 837 Mt at 1,175 ppm at a 700ppm lithium cut-off-grade
- Scotty Lithium is located 40km north of the mining town of Beatty, 220km from Las Vegas and 330km from Tesla's Nevada Gigafactory with existing all-weather roads and power infrastructure within close proximity.

BRISK LITHIUM PROJECT:

- Due to wildfires in James Bay preventing exploration during much of this summer's field exploration season, the Company rescheduled the planned field program for the 2024 Canadian summer
- The inaugural field program at Brisk was completed in 2022 with the following highlights:
 - More pegmatite outcrops discovered at Area 1 than originally anticipated.
 - Area 1 and Area 2 considered prospective for lithium, and further field work is recommended.
 - Multiple samples containing highly fractionated pegmatites with indicator elements and mineralogy were obtained, including lithium, tantalum, niobium, beryllium, and bismuth, tourmaline, apatite, and garnet.
 - The southwest pegmatite body at Area 3 is highly continuous, with rubidium detected in the geochemical signature.

FINANCE UPDATE

Cash available to the Company as at 30 September 2023 was A\$9.6m strongly positioning LLI for further exploration in the coming quarter and 2024.

Payments for the Quarter included:

- Exploration and Evaluation Expenditure during the quarter was A\$1.375m. Full details of exploration activity during the Quarter are set out in this report and relate primarily to exploration costs at Hidden Lake, Trieste and Scotty Lithium Project,
- Transaction costs relating to the re-compliance listing and related to issues of equity securities during the Quarter was A\$548,000.
- Payment to related parties of the Company and their associates during the Quarter was A\$146,000.

The Company's disclosure required by ASX Listing Rule 5.3.4 regarding a comparison of its actual expenditure to date since re-listing on 2 August 2023 against the **'Use of Funds'** statement in its Re-compliance Prospectus dated 5 June 2023 (Section 3.9) and Supplementary Prospectus dated 27 July 2023 (Section 3.7) ("**Prospectus**") is included in the attached Appendix 5B.

OPERATIONS UPDATE



Figure 1 – Loyal Lithium’s three Lithium Projects set amongst the North American Battery Supply Chain

HIDDEN LAKE LITHIUM PROJECT

During the Quarter, the Company formally completed the acquisition of the Hidden Lake Lithium Project, formalising a Joint Venture arrangement between Loyal Lithium and Patriot Battery Metals (ASX:PMT, TSXV:PMET) - minority owner of 5 of the 6 claims (the easternmost claim is 100% owned by Loyal Lithium).

The Project is strategically located 45 km east of Yellowknife, the capital of the Northwest Territories, and is located within the emerging Yellowknife Lithium District adjacent to an all-weather highway to the south and east, and Li-FT Power’s (CSE: LIFT; FSE: WS0) properties to the North.

Loyal engaged its in-country geological partner, Dahrouge Geological Consulting, to conduct an extensive field mapping and sampling program at the Hidden Lake Lithium Project in the NWT, Canada. A program was conducted on 315 previously untested and inadequately tested individual outcrops identified via the newly acquired high resolution visible and infrared satellite imagery and reprocessed lithium channel combination imagery. A total of 298 samples were collected for assay analysis during the fieldwork, 269 outcrop and 29 channel samples. The Company also conducted LiDAR and orthophoto airborne surveys. Loyal Lithium was fortunate that the program was completed prior to the forest fire induced evacuation orders at Yellowknife.

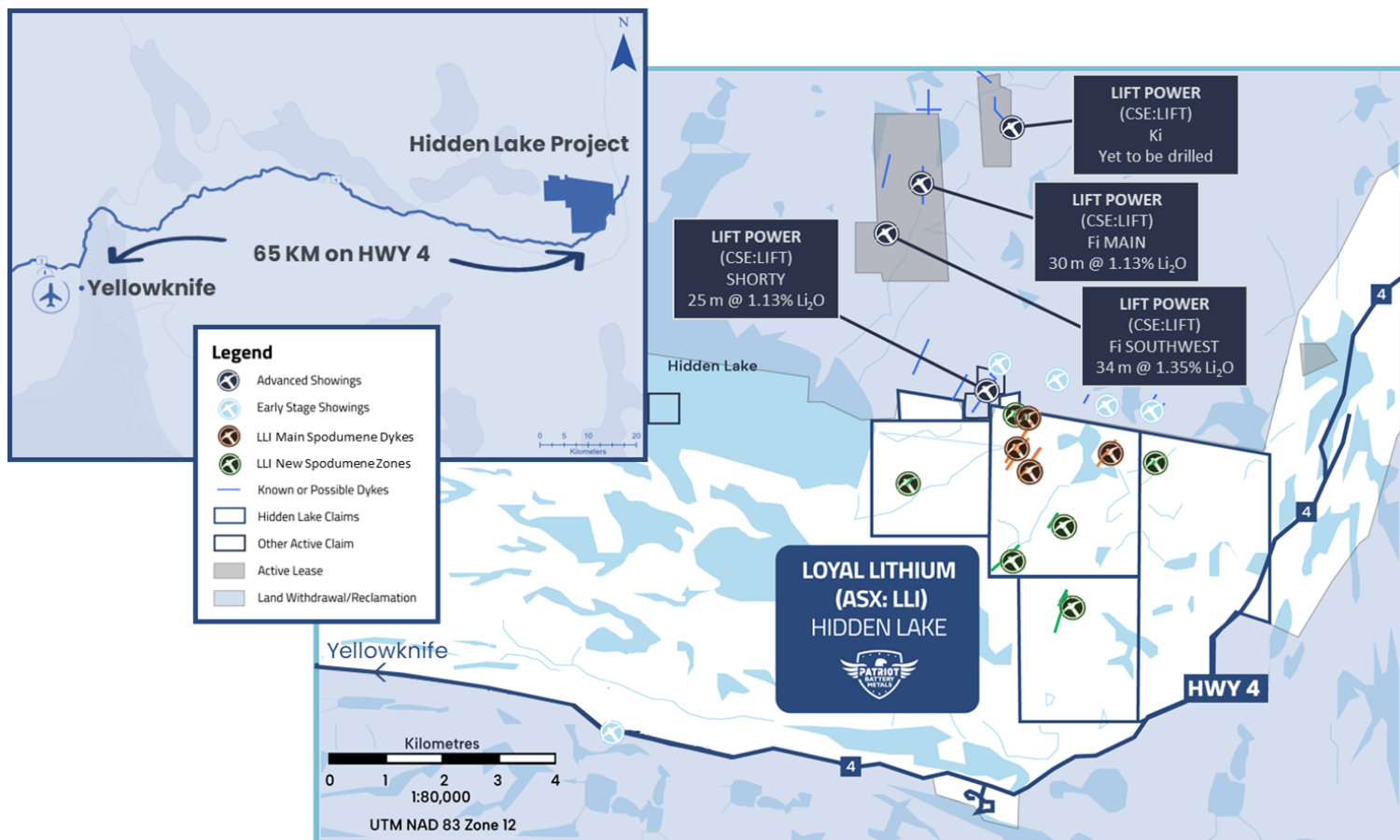


Figure 2 – Hidden Lake Lithium Project: Yellowknife, Northwest Territories, Canada.

The four previously discovered spodumene bearing pegmatite dykes, with a cumulative strike length of 2,250m, were drilled in 2018 to a limited depth of 30–50 metres, with drill hole intercepts of up to 1.81% Li_2O .

Results from the 2023 summer field program were received subsequent to the Quarter with the Company announcing that it had increased the collective surface mineralization strike length at Hidden Lake, from 2,250m to approximately 3,250m. This was determined through the analysis of rock chips and channel samples collected from the newly identified spodumene bearing outcrops discovered during the summer filed program.

Extensive surface mineralisation was grouped within two major mineralised clusters (MAX & HUE), consisting of 7 spodumene bearing pegmatite dykes. The Company has submitted a Land Use Permit to enable the commencement of a drilling program this Canadian winter. The drilling program will target the mineralised clusters of MAX & HUE, however additional drilling locations have also been included at the other newly identified spodumene bearing zones elsewhere on the project.

The Hidden Lake Lithium Project will also benefit from the high-resolution orthographic imagery and LiDAR data, recently received, for refining drill targets and assessing future development options.

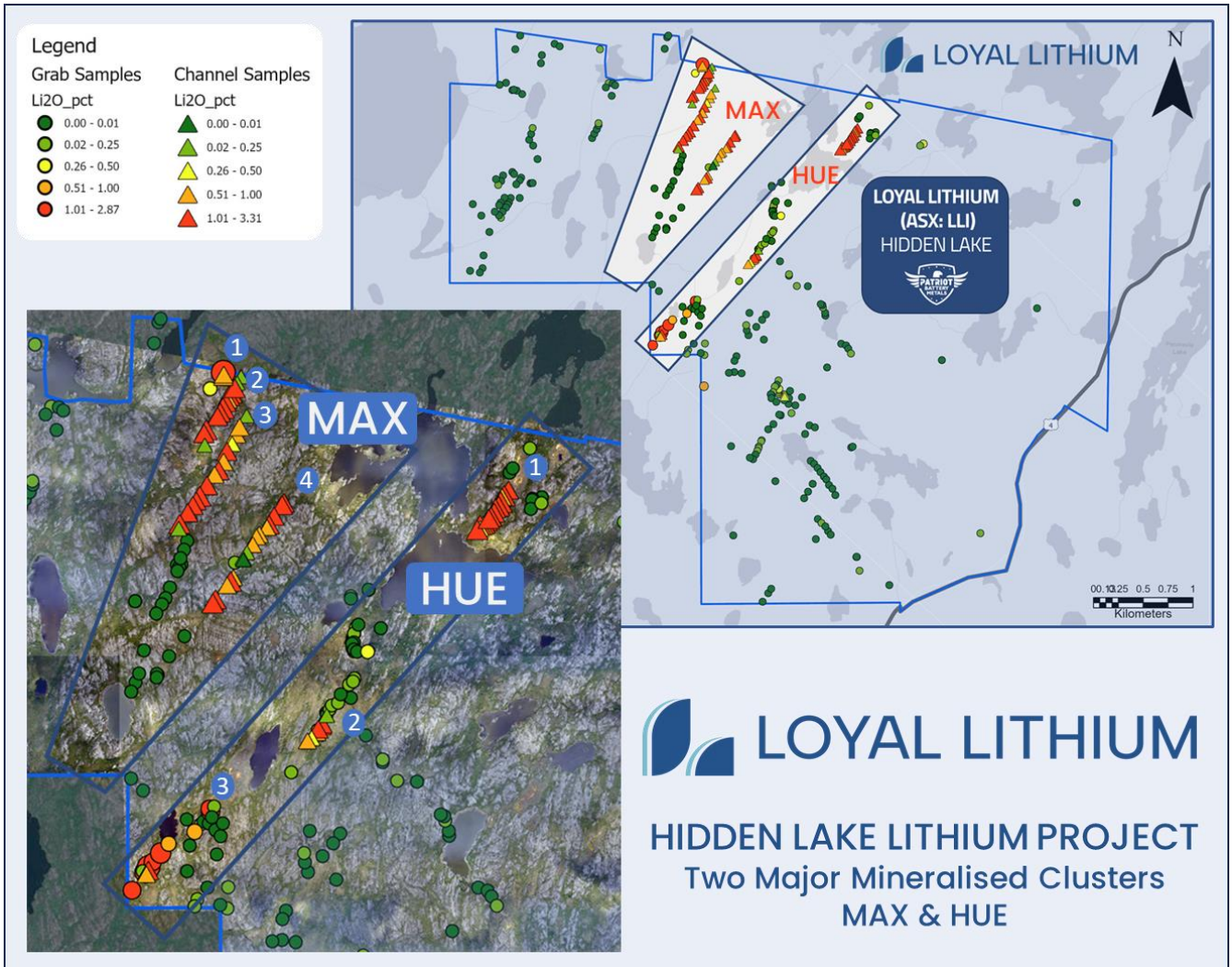


Figure 3 - Hidden Lake Lithium Project: Yellowknife, Northwest Territories, Canada.

TRIESTE LITHIUM PROJECT

The Trieste Lithium Project is a large scale project located 14 km east of Winsome Resources’ Adina Lithium Project in the Tier 1 mining jurisdiction of Quebec, Canada. Loyal Lithium is the largest land holder along the highly prospective Trieste Greenstone Belt, covering 251 km², which is 8.6 times larger than Winsome Resources’ Adina Lithium Project.

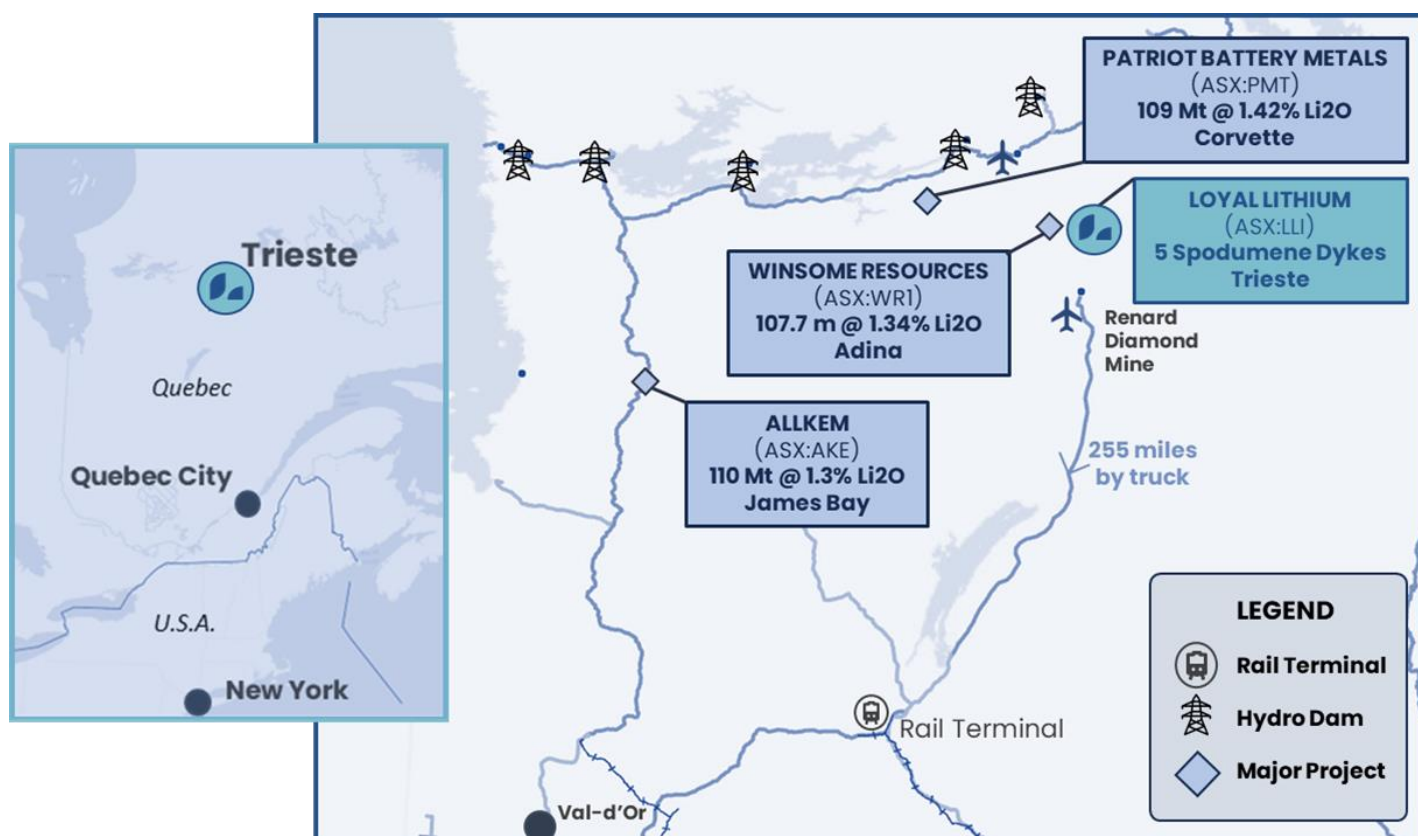


Figure 4 – Trieste Lithium Project: Quebec, Canada.

During the Quarter, the Trieste Lithium Project experienced operational delays due to the widespread bushfires within Quebec. However, with the support of its in-country geological partner, Dahrouge Geological Consulting, an intensive 2023 summer field mapping and sampling program commenced in August. The design and implementation of the program was informed by a regional/local geological assessment of historical data (outcrop, geochemical, till, and lake samples), high-resolution aeromagnetic acquisition and analysis, and multispectral satellite image analysis.

During the program, five spodumene bearing pegmatite dykes were discovered, with aligned implied continuous outcrops, within a 6 km² area to the south of the Trieste Greenstone Belt. The dykes are situated within metasediment host rock, with several high-value greenstone targets, as well as metasediment targets, yet to be fully explored.

The field observations of spodumene occurring within the dykes was confirmed by members of the Ordre des Géologues du Québec, and by the JORC Competent Person (CP), with many large spodumene crystals identified across the five discovered dykes.

The significance of the discovery fast-tracked the Company’s drilling activities at the project, with an initial drilling campaign of up to 2,000m commencing at the end of the Quarter targeting Dyke #01 a large, prominent weathering-resistant outcrop ridge. Drilling results will help guide a more substantial drilling campaign for this Canadian winter.

Prior to the end of the Quarter, Loyal signed a Memorandum of Understanding (MOU) with Winsome Resources to foster collaboration aimed at minimising the environmental and local footprint of exploration and mining activities in the Trieste greenstone region.

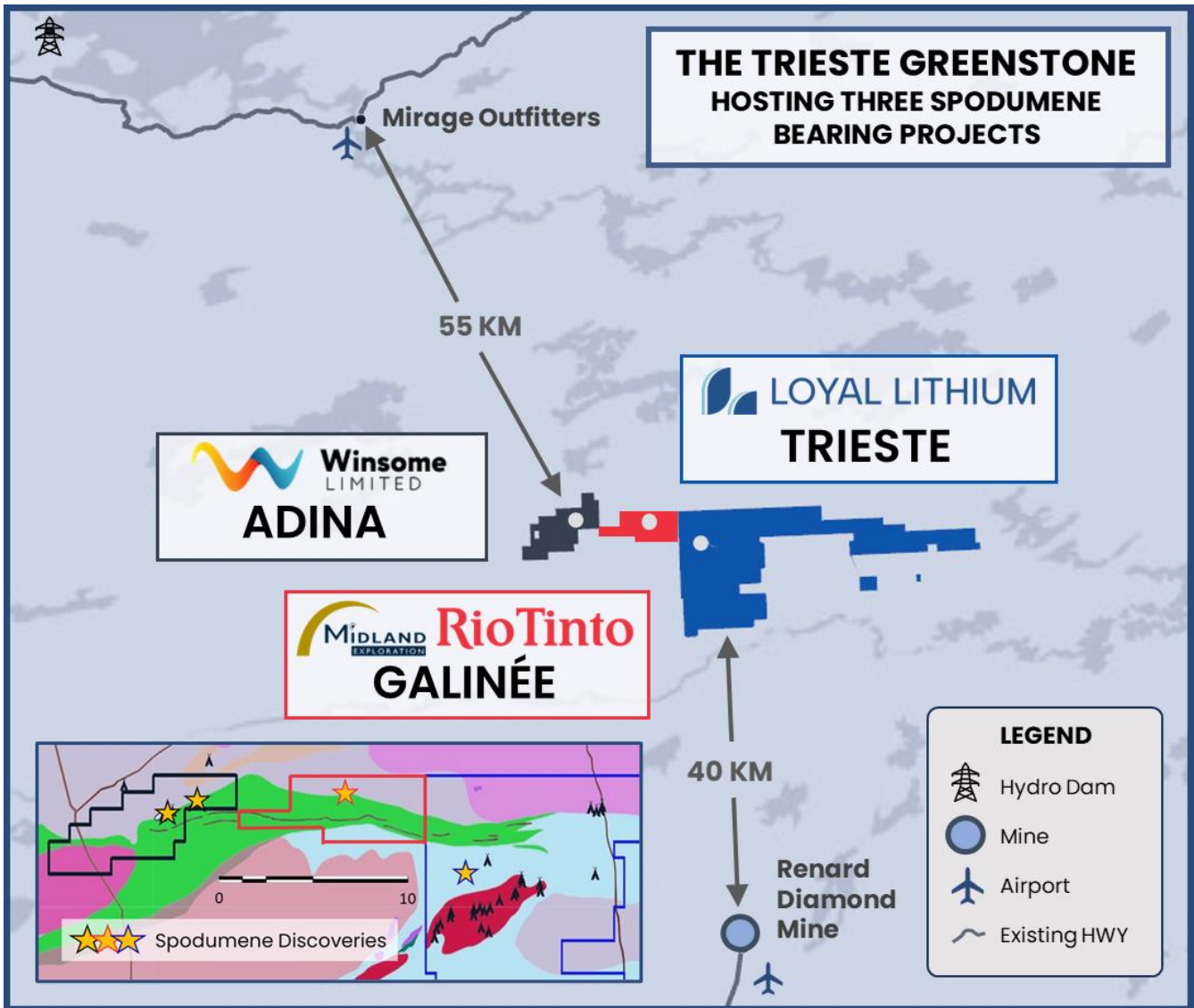


Figure 5 – Trieste Lithium Project – Three Spodumene Bearing Project along the Trieste Greenstone Belt.

The primary objective of this MOU is to harness exploration synergies, streamline government approvals through coordinated strategies, and facilitate the development of lithium mines within Quebec's James Bay region – a Tier 1 mining jurisdiction. Notably, both lithium projects are situated within 14 kilometers of each other, offering significant opportunities for synergy and efficiency.

The MOU's immediate focus is on cost reduction in exploration activities by eliminating redundant workflows and leveraging regional and local infrastructure. As the projects progress, the integration of mining and infrastructure concepts will become pivotal in minimising environmental impacts and complying with modern mining regulatory requirements.

SCOTTY LITHIUM PROJECT

The Scotty Lithium Project covers 78.1 km² and is 67 km north of the mining town of Beatty and is accessible year-round via HWY 95 and HWY 267. The project is also strategically located via HWY 189km northwest of Las Vegas, 330km from Tesla's Nevada Gigafactory and 517 km from Reno in the Tier 1 mining jurisdiction of Nevada, USA, with existing power infrastructure withing close proximity. The Scotty Lithium Project is adjacent to the existing Nevada Lithium Ltd (CSE:NVLH) Bonnie Claire Project, a lithium sediment project, with similar geology. Scotty is less than 100km from Albemarle's operational Silver Peak Mine in Clayton Valley (NYSE: ALB) and Ioneer's Rhyolite Ridge Lithium-Boron Project (ASX:INR).

The Scotty Project has strong mineralisation, as the Company received assay results from its inaugural sonic drilling campaign with an average grade of 1,120ppm lithium at a 700ppm lithium cut-off-grade, and a peak lithium value of 4,007ppm. The campaign consisted of 3 sonic drill holes, with an average depth of 171m for a total of 513m. These results allowed for an independent exploration target to be determined for the Project of 460 million tonnes (Mt) at 1145 ppm to 837 Mt at 1175 ppm at a 700ppm lithium cut-off-grade, indicating a potentially significant sediment hosted lithium deposit. The potential quantities and grades are conceptual in nature and there has been insufficient exploration to estimate a Mineral Resource and the Company is uncertain if further exploration will result in the estimation of a Mineral Resource.

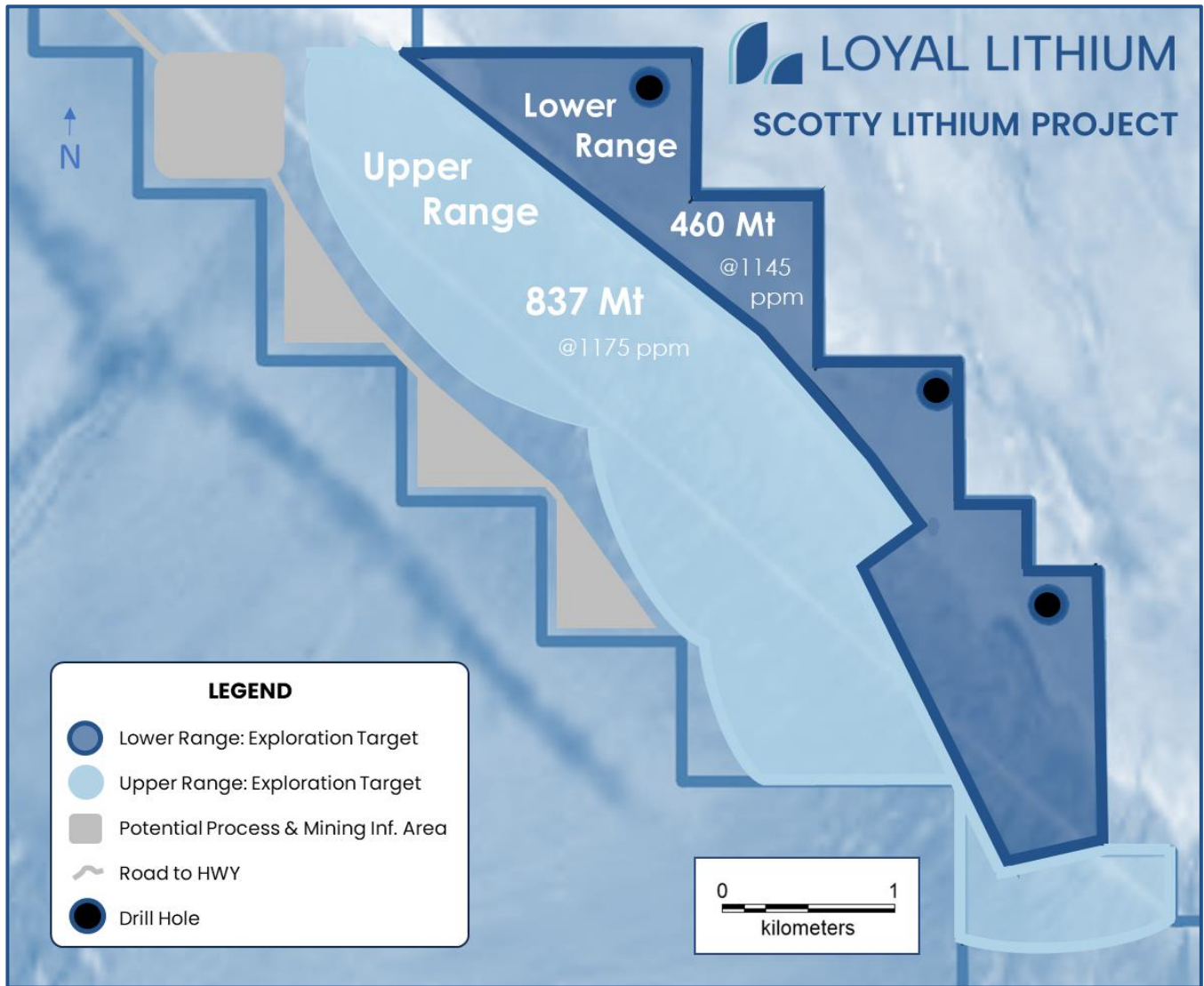


Figure 6 - Scotty Lithium Project – Map showing the Exploration Target domains.

BRISK LITHIUM PROJECT

A total of 192 mining claims covering 98.5km² were acquired when the option was exercised after field survey outcrop assay results were received. The claims are divided into six separate claim blocks, extending over 70km in an east-west direction.

The Brisk Lithium Project contains a number of targets generated in the 2022 field campaign at Areas 1, 2 and 3 that require further testing. Due to the capacity constraints of geological contractor availability during this summer’s shortened field season, the Company prioritised fieldwork at the Trieste Lithium Project and is now planning for a field program at Brisk during the 2024 Canadian summer.



Figure 7 - Brisk Lithium Project.

WESTERN AUSTRALIA – MONGER NORTH, SOUTH AND GIBRALTAR PROJECTS:¹⁴

The conclusions from both the August and November 2022 Strategic Reviews lists all West Australian gold and base metal assets as better suited for joint venture or divestment with the following highlights:

1. Monger North Project: Loyal Lithium discovered 16,400 oz JORC Inferred gold resource to 110m, open to both the northwest and southwest at depth with increasing grade at depth.
2. Gibraltar Project: JORC Exploration Target tonnage and gold grade range between a minimum of 285,500t @ 0.71g/t and maximum 386,000t @ 0.97g/t, advanced by Loyal Lithium. [NOTE: due to the uncertainty in supporting data, these minimum and maximum tonnage and grade ranges are conceptual in nature, as there has been insufficient exploration to estimate a JORC Mineral Resource. It is uncertain if further exploration will result in JORC Mineral Resource estimates.]
3. Monger South Project: VMS silver-zinc-copper (SZC) outcrop sample assays linked with FLEM geophysics survey conductor anomaly discovered by Loyal Lithium. Gold, nickel and SZC outcrop assays and ultrafine soils anomalies found by LLI elsewhere on the Project

This announcement has been authorised for release by Loyal Lithium’s Board of Directors

For more information:

Adam Ritchie

Chief Executive Officer
 aritchie@loyallithium.com
 +61 (0) 403 462 383

Jane Morgan

Investor & Media Relations
 jm@janemorganmanagement.com.au
 + 61 (0) 405 555 618

About Loyal Lithium

Loyal Lithium Limited (ASX: LLI) is a well-structured listed resource exploration company with projects in Tier 1 North American mining jurisdictions in the Northwest Territories, Canada, James Bay Lithium District in Quebec, Canada and Nevada, USA. Through the systematic exploration of its projects, the Company aims to delineate JORC compliant resources, creating significant value for its shareholders.

Future Performance

This announcement may contain certain forward-looking statements and opinion Forward-looking statements, including projections, forecasts and estimates, are provided as a general guide only and should not be relied on as an indication or guarantee of future performance and involve known and unknown risks, uncertainties, assumptions, contingencies and other important factors, many of which are outside the control of the Company and which are subject to change without notice and could cause the actual results, performance or achievements of the Company to be materially different from the future results, performance or achievements expressed or implied by such statements. Past performance is not necessarily a guide to future performance and no representation or warranty is made as to the likelihood of achievement or reasonableness of any forward-looking statements or other forecast. Nothing contained in this announcement, nor any information made available to you is, or and shall be relied upon as, a promise, representation, warranty or guarantee as to the past, present or the future performance of Loyal Lithium Limited.

Qualified and Competent Person

The information in this announcement that relates to exploration results, is based, and fairly reflects, information compiled by Mr Darren Allingham, who is the Company's geologist. Mr Allingham is a Fellow of the Australian Institute of Geoscientists. Mr Allingham has sufficient experience which is relevant to the style of mineralisation and type of deposit under consideration and the activity he is undertaking to qualify as a *Competent Person* as defined in the 2012 Edition of the Australasian Code for Reporting of Exploration Results and Mineral Resources (JORC Code). Mr Allingham consents to the inclusion in the announcement of the matters based on the information in the form and context in which it appears.

TENEMENT TABLE: ASX LISTING RULE 5.3.3

Mining tenement interest held at the end of the quarter and their location

Tenement or Claim Number	Location	Nature	Status	Interest
CDC2636348	Brisk	Brisk Lithium Project Inc.	Active	100%
CDC2636349	Brisk	Brisk Lithium Project Inc.	Active	100%
CDC2636350	Brisk	Brisk Lithium Project Inc.	Active	100%
CDC2636351	Brisk	Brisk Lithium Project Inc.	Active	100%
CDC2636352	Brisk	Brisk Lithium Project Inc.	Active	100%
CDC2636353	Brisk	Brisk Lithium Project Inc.	Active	100%
CDC2636354	Brisk	Brisk Lithium Project Inc.	Active	100%
CDC2636355	Brisk	Brisk Lithium Project Inc.	Active	100%
CDC2636356	Brisk	Brisk Lithium Project Inc.	Active	100%
CDC2636357	Brisk	Brisk Lithium Project Inc.	Active	100%
CDC2636358	Brisk	Brisk Lithium Project Inc.	Active	100%
CDC2636359	Brisk	Brisk Lithium Project Inc.	Active	100%
CDC2636360	Brisk	Brisk Lithium Project Inc.	Active	100%
CDC2636361	Brisk	Brisk Lithium Project Inc.	Active	100%
CDC2636362	Brisk	Brisk Lithium Project Inc.	Active	100%
CDC2636363	Brisk	Brisk Lithium Project Inc.	Active	100%
CDC2636364	Brisk	Brisk Lithium Project Inc.	Active	100%
CDC2636365	Brisk	Brisk Lithium Project Inc.	Active	100%
CDC2636366	Brisk	Brisk Lithium Project Inc.	Active	100%
CDC2636367	Brisk	Brisk Lithium Project Inc.	Active	100%
CDC2636368	Brisk	Brisk Lithium Project Inc.	Active	100%
CDC2636369	Brisk	Brisk Lithium Project Inc.	Active	100%
CDC2636370	Brisk	Brisk Lithium Project Inc.	Active	100%
CDC2636371	Brisk	Brisk Lithium Project Inc.	Active	100%
CDC2636372	Brisk	Brisk Lithium Project Inc.	Active	100%
CDC2636373	Brisk	Brisk Lithium Project Inc.	Active	100%
CDC2636374	Brisk	Brisk Lithium Project Inc.	Active	100%
CDC2636375	Brisk	Brisk Lithium Project Inc.	Active	100%
CDC2636376	Brisk	Brisk Lithium Project Inc.	Active	100%
CDC2636377	Brisk	Brisk Lithium Project Inc.	Active	100%
CDC2636378	Brisk	Brisk Lithium Project Inc.	Active	100%
CDC2636379	Brisk	Brisk Lithium Project Inc.	Active	100%
CDC2636380	Brisk	Brisk Lithium Project Inc.	Active	100%
CDC2636381	Brisk	Brisk Lithium Project Inc.	Active	100%
CDC2636382	Brisk	Brisk Lithium Project Inc.	Active	100%
CDC2636383	Brisk	Brisk Lithium Project Inc.	Active	100%
CDC2636384	Brisk	Brisk Lithium Project Inc.	Active	100%

Tenement or Claim Number	Location	Nature	Status	Interest
CDC2636385	Brisk	Brisk Lithium Project Inc.	Active	100%
CDC2636386	Brisk	Brisk Lithium Project Inc.	Active	100%
CDC2636387	Brisk	Brisk Lithium Project Inc.	Active	100%
CDC2636388	Brisk	Brisk Lithium Project Inc.	Active	100%
CDC2636389	Brisk	Brisk Lithium Project Inc.	Active	100%
CDC2636390	Brisk	Brisk Lithium Project Inc.	Active	100%
CDC2636391	Brisk	Brisk Lithium Project Inc.	Active	100%
CDC2636392	Brisk	Brisk Lithium Project Inc.	Active	100%
CDC2636393	Brisk	Brisk Lithium Project Inc.	Active	100%
CDC2636394	Brisk	Brisk Lithium Project Inc.	Active	100%
CDC2636395	Brisk	Brisk Lithium Project Inc.	Active	100%
CDC2636396	Brisk	Brisk Lithium Project Inc.	Active	100%
CDC2636397	Brisk	Brisk Lithium Project Inc.	Active	100%
CDC2636398	Brisk	Brisk Lithium Project Inc.	Active	100%
CDC2636399	Brisk	Brisk Lithium Project Inc.	Active	100%
CDC2636400	Brisk	Brisk Lithium Project Inc.	Active	100%
CDC2636401	Brisk	Brisk Lithium Project Inc.	Active	100%
CDC2636402	Brisk	Brisk Lithium Project Inc.	Active	100%
CDC2636403	Brisk	Brisk Lithium Project Inc.	Active	100%
CDC2636404	Brisk	Brisk Lithium Project Inc.	Active	100%
CDC2636405	Brisk	Brisk Lithium Project Inc.	Active	100%
CDC2636406	Brisk	Brisk Lithium Project Inc.	Active	100%
CDC2636407	Brisk	Brisk Lithium Project Inc.	Active	100%
CDC2636408	Brisk	Brisk Lithium Project Inc.	Active	100%
CDC2636409	Brisk	Brisk Lithium Project Inc.	Active	100%
CDC2636410	Brisk	Brisk Lithium Project Inc.	Active	100%
CDC2636411	Brisk	Brisk Lithium Project Inc.	Active	100%
CDC2636412	Brisk	Brisk Lithium Project Inc.	Active	100%
CDC2636413	Brisk	Brisk Lithium Project Inc.	Active	100%
CDC2636414	Brisk	Brisk Lithium Project Inc.	Active	100%
CDC2636415	Brisk	Brisk Lithium Project Inc.	Active	100%
CDC2636416	Brisk	Brisk Lithium Project Inc.	Active	100%
CDC2636417	Brisk	Brisk Lithium Project Inc.	Active	100%
CDC2636418	Brisk	Brisk Lithium Project Inc.	Active	100%
CDC2636419	Brisk	Brisk Lithium Project Inc.	Active	100%
CDC2636420	Brisk	Brisk Lithium Project Inc.	Active	100%
CDC2636421	Brisk	Brisk Lithium Project Inc.	Active	100%
CDC2636422	Brisk	Brisk Lithium Project Inc.	Active	100%
CDC2636423	Brisk	Brisk Lithium Project Inc.	Active	100%
CDC2636424	Brisk	Brisk Lithium Project Inc.	Active	100%
CDC2636425	Brisk	Brisk Lithium Project Inc.	Active	100%
CDC2636426	Brisk	Brisk Lithium Project Inc.	Active	100%

Tenement or Claim Number	Location	Nature	Status	Interest
CDC2636427	Brisk	Brisk Lithium Project Inc.	Active	100%
CDC2636428	Brisk	Brisk Lithium Project Inc.	Active	100%
CDC2636429	Brisk	Brisk Lithium Project Inc.	Active	100%
CDC2636430	Brisk	Brisk Lithium Project Inc.	Active	100%
CDC2636431	Brisk	Brisk Lithium Project Inc.	Active	100%
CDC2636432	Brisk	Brisk Lithium Project Inc.	Active	100%
CDC2636433	Brisk	Brisk Lithium Project Inc.	Active	100%
CDC2636434	Brisk	Brisk Lithium Project Inc.	Active	100%
CDC2636435	Brisk	Brisk Lithium Project Inc.	Active	100%
CDC2636436	Brisk	Brisk Lithium Project Inc.	Active	100%
CDC2636437	Brisk	Brisk Lithium Project Inc.	Active	100%
CDC2636438	Brisk	Brisk Lithium Project Inc.	Active	100%
CDC2636439	Brisk	Brisk Lithium Project Inc.	Active	100%
CDC2636440	Brisk	Brisk Lithium Project Inc.	Active	100%
CDC2636441	Brisk	Brisk Lithium Project Inc.	Active	100%
CDC2636442	Brisk	Brisk Lithium Project Inc.	Active	100%
CDC2636443	Brisk	Brisk Lithium Project Inc.	Active	100%
CDC2636444	Brisk	Brisk Lithium Project Inc.	Active	100%
CDC2636445	Brisk	Brisk Lithium Project Inc.	Active	100%
CDC2636446	Brisk	Brisk Lithium Project Inc.	Active	100%
CDC2636447	Brisk	Brisk Lithium Project Inc.	Active	100%
CDC2636448	Brisk	Brisk Lithium Project Inc.	Active	100%
CDC2636449	Brisk	Brisk Lithium Project Inc.	Active	100%
CDC2636450	Brisk	Brisk Lithium Project Inc.	Active	100%
CDC2636451	Brisk	Brisk Lithium Project Inc.	Active	100%
CDC2636452	Brisk	Brisk Lithium Project Inc.	Active	100%
CDC2636453	Brisk	Brisk Lithium Project Inc.	Active	100%
CDC2636454	Brisk	Brisk Lithium Project Inc.	Active	100%
CDC2636455	Brisk	Brisk Lithium Project Inc.	Active	100%
CDC2636456	Brisk	Brisk Lithium Project Inc.	Active	100%
CDC2636457	Brisk	Brisk Lithium Project Inc.	Active	100%
CDC2636458	Brisk	Brisk Lithium Project Inc.	Active	100%
CDC2636459	Brisk	Brisk Lithium Project Inc.	Active	100%
CDC2636460	Brisk	Brisk Lithium Project Inc.	Active	100%
CDC2636461	Brisk	Brisk Lithium Project Inc.	Active	100%
CDC2636462	Brisk	Brisk Lithium Project Inc.	Active	100%
CDC2636463	Brisk	Brisk Lithium Project Inc.	Active	100%
CDC2636464	Brisk	Brisk Lithium Project Inc.	Active	100%
CDC2636465	Brisk	Brisk Lithium Project Inc.	Active	100%
CDC2636466	Brisk	Brisk Lithium Project Inc.	Active	100%
CDC2636467	Brisk	Brisk Lithium Project Inc.	Active	100%
CDC2636468	Brisk	Brisk Lithium Project Inc.	Active	100%

Tenement or Claim Number	Location	Nature	Status	Interest
CDC2636469	Brisk	Brisk Lithium Project Inc.	Active	100%
CDC2636470	Brisk	Brisk Lithium Project Inc.	Active	100%
CDC2636471	Brisk	Brisk Lithium Project Inc.	Active	100%
CDC2636472	Brisk	Brisk Lithium Project Inc.	Active	100%
CDC2636473	Brisk	Brisk Lithium Project Inc.	Active	100%
CDC2636474	Brisk	Brisk Lithium Project Inc.	Active	100%
CDC2636475	Brisk	Brisk Lithium Project Inc.	Active	100%
CDC2636476	Brisk	Brisk Lithium Project Inc.	Active	100%
CDC2636477	Brisk	Brisk Lithium Project Inc.	Active	100%
CDC2636478	Brisk	Brisk Lithium Project Inc.	Active	100%
CDC2636479	Brisk	Brisk Lithium Project Inc.	Active	100%
CDC2636480	Brisk	Brisk Lithium Project Inc.	Active	100%
CDC2636481	Brisk	Brisk Lithium Project Inc.	Active	100%
CDC2636482	Brisk	Brisk Lithium Project Inc.	Active	100%
CDC2636483	Brisk	Brisk Lithium Project Inc.	Active	100%
CDC2636484	Brisk	Brisk Lithium Project Inc.	Active	100%
CDC2636485	Brisk	Brisk Lithium Project Inc.	Active	100%
CDC2636486	Brisk	Brisk Lithium Project Inc.	Active	100%
CDC2636487	Brisk	Brisk Lithium Project Inc.	Active	100%
CDC2636488	Brisk	Brisk Lithium Project Inc.	Active	100%
CDC2636489	Brisk	Brisk Lithium Project Inc.	Active	100%
CDC2636490	Brisk	Brisk Lithium Project Inc.	Active	100%
CDC2636491	Brisk	Brisk Lithium Project Inc.	Active	100%
CDC2636492	Brisk	Brisk Lithium Project Inc.	Active	100%
CDC2636493	Brisk	Brisk Lithium Project Inc.	Active	100%
CDC2636494	Brisk	Brisk Lithium Project Inc.	Active	100%
CDC2636495	Brisk	Brisk Lithium Project Inc.	Active	100%
CDC2636496	Brisk	Brisk Lithium Project Inc.	Active	100%
CDC2636497	Brisk	Brisk Lithium Project Inc.	Active	100%
CDC2636498	Brisk	Brisk Lithium Project Inc.	Active	100%
CDC2636499	Brisk	Brisk Lithium Project Inc.	Active	100%
CDC2636500	Brisk	Brisk Lithium Project Inc.	Active	100%
CDC2636501	Brisk	Brisk Lithium Project Inc.	Active	100%
CDC2636502	Brisk	Brisk Lithium Project Inc.	Active	100%
CDC2636503	Brisk	Brisk Lithium Project Inc.	Active	100%
CDC2636504	Brisk	Brisk Lithium Project Inc.	Active	100%
CDC2636505	Brisk	Brisk Lithium Project Inc.	Active	100%
CDC2636506	Brisk	Brisk Lithium Project Inc.	Active	100%
CDC2636507	Brisk	Brisk Lithium Project Inc.	Active	100%
CDC2636508	Brisk	Brisk Lithium Project Inc.	Active	100%
CDC2636509	Brisk	Brisk Lithium Project Inc.	Active	100%
CDC2636510	Brisk	Brisk Lithium Project Inc.	Active	100%

Tenement or Claim Number	Location	Nature	Status	Interest
CDC2636511	Brisk	Brisk Lithium Project Inc.	Active	100%
CDC2636512	Brisk	Brisk Lithium Project Inc.	Active	100%
CDC2636513	Brisk	Brisk Lithium Project Inc.	Active	100%
CDC2636514	Brisk	Brisk Lithium Project Inc.	Active	100%
CDC2636515	Brisk	Brisk Lithium Project Inc.	Active	100%
CDC2636516	Brisk	Brisk Lithium Project Inc.	Active	100%
CDC2636517	Brisk	Brisk Lithium Project Inc.	Active	100%
CDC2636518	Brisk	Brisk Lithium Project Inc.	Active	100%
CDC2636519	Brisk	Brisk Lithium Project Inc.	Active	100%
CDC2636520	Brisk	Brisk Lithium Project Inc.	Active	100%
CDC2636521	Brisk	Brisk Lithium Project Inc.	Active	100%
CDC2636522	Brisk	Brisk Lithium Project Inc.	Active	100%
CDC2636523	Brisk	Brisk Lithium Project Inc.	Active	100%
CDC2636524	Brisk	Brisk Lithium Project Inc.	Active	100%
CDC2636525	Brisk	Brisk Lithium Project Inc.	Active	100%
CDC2636526	Brisk	Brisk Lithium Project Inc.	Active	100%
CDC2636527	Brisk	Brisk Lithium Project Inc.	Active	100%
CDC2636528	Brisk	Brisk Lithium Project Inc.	Active	100%
CDC2636529	Brisk	Brisk Lithium Project Inc.	Active	100%
CDC2636530	Brisk	Brisk Lithium Project Inc.	Active	100%
CDC2636531	Brisk	Brisk Lithium Project Inc.	Active	100%
CDC2636532	Brisk	Brisk Lithium Project Inc.	Active	100%
CDC2636533	Brisk	Brisk Lithium Project Inc.	Active	100%
CDC2636534	Brisk	Brisk Lithium Project Inc.	Active	100%
CDC2636535	Brisk	Brisk Lithium Project Inc.	Active	100%
CDC2636536	Brisk	Brisk Lithium Project Inc.	Active	100%
CDC2636537	Brisk	Brisk Lithium Project Inc.	Active	100%
CDC2636538	Brisk	Brisk Lithium Project Inc.	Active	100%
CDC2636539	Brisk	Brisk Lithium Project Inc.	Active	100%
CDC2674064	Trieste	Trieste Lithium Project Inc.	Active	100%
CDC2674065	Trieste	Trieste Lithium Project Inc.	Active	100%
CDC2674066	Trieste	Trieste Lithium Project Inc.	Active	100%
CDC2674067	Trieste	Trieste Lithium Project Inc.	Active	100%
CDC2674068	Trieste	Trieste Lithium Project Inc.	Active	100%
CDC2674069	Trieste	Trieste Lithium Project Inc.	Active	100%
CDC2674070	Trieste	Trieste Lithium Project Inc.	Active	100%
CDC2674071	Trieste	Trieste Lithium Project Inc.	Active	100%
CDC2674072	Trieste	Trieste Lithium Project Inc.	Active	100%
CDC2674073	Trieste	Trieste Lithium Project Inc.	Active	100%
CDC2674074	Trieste	Trieste Lithium Project Inc.	Active	100%
CDC2674075	Trieste	Trieste Lithium Project Inc.	Active	100%
CDC2674076	Trieste	Trieste Lithium Project Inc.	Active	100%

Tenement or Claim Number	Location	Nature	Status	Interest
CDC2674077	Trieste	Trieste Lithium Project Inc.	Active	100%
CDC2674078	Trieste	Trieste Lithium Project Inc.	Active	100%
CDC2674079	Trieste	Trieste Lithium Project Inc.	Active	100%
CDC2674080	Trieste	Trieste Lithium Project Inc.	Active	100%
CDC2674081	Trieste	Trieste Lithium Project Inc.	Active	100%
CDC2674082	Trieste	Trieste Lithium Project Inc.	Active	100%
CDC2674083	Trieste	Trieste Lithium Project Inc.	Active	100%
CDC2674084	Trieste	Trieste Lithium Project Inc.	Active	100%
CDC2674085	Trieste	Trieste Lithium Project Inc.	Active	100%
CDC2674086	Trieste	Trieste Lithium Project Inc.	Active	100%
CDC2674087	Trieste	Trieste Lithium Project Inc.	Active	100%
CDC2674088	Trieste	Trieste Lithium Project Inc.	Active	100%
CDC2674089	Trieste	Trieste Lithium Project Inc.	Active	100%
CDC2674090	Trieste	Trieste Lithium Project Inc.	Active	100%
CDC2674091	Trieste	Trieste Lithium Project Inc.	Active	100%
CDC2674092	Trieste	Trieste Lithium Project Inc.	Active	100%
CDC2674093	Trieste	Trieste Lithium Project Inc.	Active	100%
CDC2674094	Trieste	Trieste Lithium Project Inc.	Active	100%
CDC2674095	Trieste	Trieste Lithium Project Inc.	Active	100%
CDC2674096	Trieste	Trieste Lithium Project Inc.	Active	100%
CDC2674097	Trieste	Trieste Lithium Project Inc.	Active	100%
CDC2674098	Trieste	Trieste Lithium Project Inc.	Active	100%
CDC2674099	Trieste	Trieste Lithium Project Inc.	Active	100%
CDC2674100	Trieste	Trieste Lithium Project Inc.	Active	100%
CDC2674101	Trieste	Trieste Lithium Project Inc.	Active	100%
CDC2674102	Trieste	Trieste Lithium Project Inc.	Active	100%
CDC2674103	Trieste	Trieste Lithium Project Inc.	Active	100%
CDC2674104	Trieste	Trieste Lithium Project Inc.	Active	100%
CDC2674105	Trieste	Trieste Lithium Project Inc.	Active	100%
CDC2674106	Trieste	Trieste Lithium Project Inc.	Active	100%
CDC2674107	Trieste	Trieste Lithium Project Inc.	Active	100%
CDC2674108	Trieste	Trieste Lithium Project Inc.	Active	100%
CDC2674109	Trieste	Trieste Lithium Project Inc.	Active	100%
CDC2674110	Trieste	Trieste Lithium Project Inc.	Active	100%
CDC2674111	Trieste	Trieste Lithium Project Inc.	Active	100%
CDC2674112	Trieste	Trieste Lithium Project Inc.	Active	100%
CDC2674113	Trieste	Trieste Lithium Project Inc.	Active	100%
CDC2674114	Trieste	Trieste Lithium Project Inc.	Active	100%
CDC2674115	Trieste	Trieste Lithium Project Inc.	Active	100%
CDC2674116	Trieste	Trieste Lithium Project Inc.	Active	100%
CDC2674117	Trieste	Trieste Lithium Project Inc.	Active	100%
CDC2674118	Trieste	Trieste Lithium Project Inc.	Active	100%

Tenement or Claim Number	Location	Nature	Status	Interest
CDC2674119	Trieste	Trieste Lithium Project Inc.	Active	100%
CDC2674120	Trieste	Trieste Lithium Project Inc.	Active	100%
CDC2674121	Trieste	Trieste Lithium Project Inc.	Active	100%
CDC2674122	Trieste	Trieste Lithium Project Inc.	Active	100%
CDC2674123	Trieste	Trieste Lithium Project Inc.	Active	100%
CDC2674124	Trieste	Trieste Lithium Project Inc.	Active	100%
CDC2674125	Trieste	Trieste Lithium Project Inc.	Active	100%
CDC2674126	Trieste	Trieste Lithium Project Inc.	Active	100%
CDC2674127	Trieste	Trieste Lithium Project Inc.	Active	100%
CDC2674128	Trieste	Trieste Lithium Project Inc.	Active	100%
CDC2674129	Trieste	Trieste Lithium Project Inc.	Active	100%
CDC2674130	Trieste	Trieste Lithium Project Inc.	Active	100%
CDC2674131	Trieste	Trieste Lithium Project Inc.	Active	100%
CDC2674132	Trieste	Trieste Lithium Project Inc.	Active	100%
CDC2674133	Trieste	Trieste Lithium Project Inc.	Active	100%
CDC2674134	Trieste	Trieste Lithium Project Inc.	Active	100%
CDC2674135	Trieste	Trieste Lithium Project Inc.	Active	100%
CDC2674136	Trieste	Trieste Lithium Project Inc.	Active	100%
CDC2674137	Trieste	Trieste Lithium Project Inc.	Active	100%
CDC2674138	Trieste	Trieste Lithium Project Inc.	Active	100%
CDC2674139	Trieste	Trieste Lithium Project Inc.	Active	100%
CDC2674140	Trieste	Trieste Lithium Project Inc.	Active	100%
CDC2674141	Trieste	Trieste Lithium Project Inc.	Active	100%
CDC2674142	Trieste	Trieste Lithium Project Inc.	Active	100%
CDC2674143	Trieste	Trieste Lithium Project Inc.	Active	100%
CDC2674144	Trieste	Trieste Lithium Project Inc.	Active	100%
CDC2674145	Trieste	Trieste Lithium Project Inc.	Active	100%
CDC2674146	Trieste	Trieste Lithium Project Inc.	Active	100%
CDC2674147	Trieste	Trieste Lithium Project Inc.	Active	100%
CDC2674148	Trieste	Trieste Lithium Project Inc.	Active	100%
CDC2674149	Trieste	Trieste Lithium Project Inc.	Active	100%
CDC2674150	Trieste	Trieste Lithium Project Inc.	Active	100%
CDC2674151	Trieste	Trieste Lithium Project Inc.	Active	100%
CDC2674152	Trieste	Trieste Lithium Project Inc.	Active	100%
CDC2675919	Trieste	Trieste Lithium Project Inc.	Active	100%
CDC2675920	Trieste	Trieste Lithium Project Inc.	Active	100%
CDC2678822	Trieste	Trieste Lithium Project Inc.	Active	100%
CDC2678823	Trieste	Trieste Lithium Project Inc.	Active	100%
CDC2678824	Trieste	Trieste Lithium Project Inc.	Active	100%
CDC2678825	Trieste	Trieste Lithium Project Inc.	Active	100%
CDC2678826	Trieste	Trieste Lithium Project Inc.	Active	100%
CDC2678827	Trieste	Trieste Lithium Project Inc.	Active	100%

Tenement or Claim Number	Location	Nature	Status	Interest
CDC2678828	Trieste	Trieste Lithium Project Inc.	Active	100%
CDC2678829	Trieste	Trieste Lithium Project Inc.	Active	100%
CDC2678830	Trieste	Trieste Lithium Project Inc.	Active	100%
CDC2678831	Trieste	Trieste Lithium Project Inc.	Active	100%
CDC2678832	Trieste	Trieste Lithium Project Inc.	Active	100%
CDC2678833	Trieste	Trieste Lithium Project Inc.	Active	100%
CDC2678834	Trieste	Trieste Lithium Project Inc.	Active	100%
CDC2678835	Trieste	Trieste Lithium Project Inc.	Active	100%
CDC2678836	Trieste	Trieste Lithium Project Inc.	Active	100%
CDC2678837	Trieste	Trieste Lithium Project Inc.	Active	100%
CDC2678838	Trieste	Trieste Lithium Project Inc.	Active	100%
CDC2678839	Trieste	Trieste Lithium Project Inc.	Active	100%
CDC2678840	Trieste	Trieste Lithium Project Inc.	Active	100%
CDC2678841	Trieste	Trieste Lithium Project Inc.	Active	100%
CDC2678842	Trieste	Trieste Lithium Project Inc.	Active	100%
CDC2678843	Trieste	Trieste Lithium Project Inc.	Active	100%
CDC2678844	Trieste	Trieste Lithium Project Inc.	Active	100%
CDC2678845	Trieste	Trieste Lithium Project Inc.	Active	100%
CDC2678846	Trieste	Trieste Lithium Project Inc.	Active	100%
CDC2678847	Trieste	Trieste Lithium Project Inc.	Active	100%
CDC2678848	Trieste	Trieste Lithium Project Inc.	Active	100%
CDC2678849	Trieste	Trieste Lithium Project Inc.	Active	100%
CDC2678850	Trieste	Trieste Lithium Project Inc.	Active	100%
CDC2678851	Trieste	Trieste Lithium Project Inc.	Active	100%
CDC2678852	Trieste	Trieste Lithium Project Inc.	Active	100%
CDC2678853	Trieste	Trieste Lithium Project Inc.	Active	100%
CDC2678854	Trieste	Trieste Lithium Project Inc.	Active	100%
CDC2678855	Trieste	Trieste Lithium Project Inc.	Active	100%
CDC2678856	Trieste	Trieste Lithium Project Inc.	Active	100%
CDC2678857	Trieste	Trieste Lithium Project Inc.	Active	100%
CDC2678858	Trieste	Trieste Lithium Project Inc.	Active	100%
CDC2678859	Trieste	Trieste Lithium Project Inc.	Active	100%
CDC2678860	Trieste	Trieste Lithium Project Inc.	Active	100%
CDC2678861	Trieste	Trieste Lithium Project Inc.	Active	100%
CDC2678862	Trieste	Trieste Lithium Project Inc.	Active	100%
CDC2678863	Trieste	Trieste Lithium Project Inc.	Active	100%
CDC2678864	Trieste	Trieste Lithium Project Inc.	Active	100%
CDC2678865	Trieste	Trieste Lithium Project Inc.	Active	100%
CDC2678866	Trieste	Trieste Lithium Project Inc.	Active	100%
CDC2678867	Trieste	Trieste Lithium Project Inc.	Active	100%
CDC2678868	Trieste	Trieste Lithium Project Inc.	Active	100%
CDC2678869	Trieste	Trieste Lithium Project Inc.	Active	100%

Tenement or Claim Number	Location	Nature	Status	Interest
CDC2678870	Trieste	Trieste Lithium Project Inc.	Active	100%
CDC2678871	Trieste	Trieste Lithium Project Inc.	Active	100%
CDC2678872	Trieste	Trieste Lithium Project Inc.	Active	100%
CDC2678873	Trieste	Trieste Lithium Project Inc.	Active	100%
CDC2678874	Trieste	Trieste Lithium Project Inc.	Active	100%
CDC2678875	Trieste	Trieste Lithium Project Inc.	Active	100%
CDC2678876	Trieste	Trieste Lithium Project Inc.	Active	100%
CDC2678877	Trieste	Trieste Lithium Project Inc.	Active	100%
CDC2678878	Trieste	Trieste Lithium Project Inc.	Active	100%
CDC2678879	Trieste	Trieste Lithium Project Inc.	Active	100%
CDC2678880	Trieste	Trieste Lithium Project Inc.	Active	100%
CDC2678881	Trieste	Trieste Lithium Project Inc.	Active	100%
CDC2678882	Trieste	Trieste Lithium Project Inc.	Active	100%
CDC2678883	Trieste	Trieste Lithium Project Inc.	Active	100%
CDC2678884	Trieste	Trieste Lithium Project Inc.	Active	100%
CDC2678885	Trieste	Trieste Lithium Project Inc.	Active	100%
CDC2678886	Trieste	Trieste Lithium Project Inc.	Active	100%
CDC2678887	Trieste	Trieste Lithium Project Inc.	Active	100%
CDC2678888	Trieste	Trieste Lithium Project Inc.	Active	100%
CDC2678889	Trieste	Trieste Lithium Project Inc.	Active	100%
CDC2678890	Trieste	Trieste Lithium Project Inc.	Active	100%
CDC2678891	Trieste	Trieste Lithium Project Inc.	Active	100%
CDC2678892	Trieste	Trieste Lithium Project Inc.	Active	100%
CDC2678893	Trieste	Trieste Lithium Project Inc.	Active	100%
CDC2678894	Trieste	Trieste Lithium Project Inc.	Active	100%
CDC2678895	Trieste	Trieste Lithium Project Inc.	Active	100%
CDC2678896	Trieste	Trieste Lithium Project Inc.	Active	100%
CDC2678897	Trieste	Trieste Lithium Project Inc.	Active	100%
CDC2678898	Trieste	Trieste Lithium Project Inc.	Active	100%
CDC2678899	Trieste	Trieste Lithium Project Inc.	Active	100%
CDC2678900	Trieste	Trieste Lithium Project Inc.	Active	100%
CDC2678901	Trieste	Trieste Lithium Project Inc.	Active	100%
CDC2678902	Trieste	Trieste Lithium Project Inc.	Active	100%
CDC2678903	Trieste	Trieste Lithium Project Inc.	Active	100%
CDC2678904	Trieste	Trieste Lithium Project Inc.	Active	100%
CDC2679820	Trieste	Trieste Lithium Project Inc.	Active	100%
CDC2679821	Trieste	Trieste Lithium Project Inc.	Active	100%
CDC2679822	Trieste	Trieste Lithium Project Inc.	Active	100%
CDC2679823	Trieste	Trieste Lithium Project Inc.	Active	100%
CDC2679824	Trieste	Trieste Lithium Project Inc.	Active	100%
CDC2679825	Trieste	Trieste Lithium Project Inc.	Active	100%
CDC2679826	Trieste	Trieste Lithium Project Inc.	Active	100%

Tenement or Claim Number	Location	Nature	Status	Interest
CDC2679827	Trieste	Trieste Lithium Project Inc.	Active	100%
CDC2679828	Trieste	Trieste Lithium Project Inc.	Active	100%
CDC2680527	Trieste	Trieste Lithium Project Inc.	Active	100%
CDC2680528	Trieste	Trieste Lithium Project Inc.	Active	100%
CDC2680529	Trieste	Trieste Lithium Project Inc.	Active	100%
CDC2680530	Trieste	Trieste Lithium Project Inc.	Active	100%
CDC2680531	Trieste	Trieste Lithium Project Inc.	Active	100%
CDC2680532	Trieste	Trieste Lithium Project Inc.	Active	100%
CDC2680533	Trieste	Trieste Lithium Project Inc.	Active	100%
CDC2680534	Trieste	Trieste Lithium Project Inc.	Active	100%
CDC2680535	Trieste	Trieste Lithium Project Inc.	Active	100%
CDC2680536	Trieste	Trieste Lithium Project Inc.	Active	100%
CDC2680537	Trieste	Trieste Lithium Project Inc.	Active	100%
CDC2680538	Trieste	Trieste Lithium Project Inc.	Active	100%
CDC2680539	Trieste	Trieste Lithium Project Inc.	Active	100%
CDC2680540	Trieste	Trieste Lithium Project Inc.	Active	100%
CDC2680541	Trieste	Trieste Lithium Project Inc.	Active	100%
CDC2680542	Trieste	Trieste Lithium Project Inc.	Active	100%
CDC2680543	Trieste	Trieste Lithium Project Inc.	Active	100%
CDC2680544	Trieste	Trieste Lithium Project Inc.	Active	100%
CDC2680545	Trieste	Trieste Lithium Project Inc.	Active	100%
CDC2680546	Trieste	Trieste Lithium Project Inc.	Active	100%
CDC2680547	Trieste	Trieste Lithium Project Inc.	Active	100%
CDC2680548	Trieste	Trieste Lithium Project Inc.	Active	100%
CDC2680549	Trieste	Trieste Lithium Project Inc.	Active	100%
CDC2680550	Trieste	Trieste Lithium Project Inc.	Active	100%
CDC2680551	Trieste	Trieste Lithium Project Inc.	Active	100%
CDC2680552	Trieste	Trieste Lithium Project Inc.	Active	100%
CDC2680553	Trieste	Trieste Lithium Project Inc.	Active	100%
CDC2680554	Trieste	Trieste Lithium Project Inc.	Active	100%
CDC2680555	Trieste	Trieste Lithium Project Inc.	Active	100%
CDC2680556	Trieste	Trieste Lithium Project Inc.	Active	100%
CDC2680557	Trieste	Trieste Lithium Project Inc.	Active	100%
CDC2680558	Trieste	Trieste Lithium Project Inc.	Active	100%
CDC2680559	Trieste	Trieste Lithium Project Inc.	Active	100%
CDC2680560	Trieste	Trieste Lithium Project Inc.	Active	100%
CDC2680561	Trieste	Trieste Lithium Project Inc.	Active	100%
CDC2680562	Trieste	Trieste Lithium Project Inc.	Active	100%
CDC2680563	Trieste	Trieste Lithium Project Inc.	Active	100%
CDC2680564	Trieste	Trieste Lithium Project Inc.	Active	100%
CDC2680565	Trieste	Trieste Lithium Project Inc.	Active	100%
CDC2680566	Trieste	Trieste Lithium Project Inc.	Active	100%

Tenement or Claim Number	Location	Nature	Status	Interest
CDC2680567	Trieste	Trieste Lithium Project Inc.	Active	100%
CDC2680568	Trieste	Trieste Lithium Project Inc.	Active	100%
CDC2680569	Trieste	Trieste Lithium Project Inc.	Active	100%
CDC2673137	Trieste	Trieste Lithium Project Inc.	Active	100%
CDC2673138	Trieste	Trieste Lithium Project Inc.	Active	100%
CDC2673139	Trieste	Trieste Lithium Project Inc.	Active	100%
CDC2673140	Trieste	Trieste Lithium Project Inc.	Active	100%
CDC2673141	Trieste	Trieste Lithium Project Inc.	Active	100%
CDC2673142	Trieste	Trieste Lithium Project Inc.	Active	100%
CDC2673143	Trieste	Trieste Lithium Project Inc.	Active	100%
CDC2673144	Trieste	Trieste Lithium Project Inc.	Active	100%
CDC2673145	Trieste	Trieste Lithium Project Inc.	Active	100%
CDC2673146	Trieste	Trieste Lithium Project Inc.	Active	100%
CDC2673147	Trieste	Trieste Lithium Project Inc.	Active	100%
CDC2673148	Trieste	Trieste Lithium Project Inc.	Active	100%
CDC2145018	Trieste	Indirect	Active	Option
CDC2145023	Trieste	Indirect	Active	Option
CDC2145019	Trieste	Indirect	Active	Option
CDC2145020	Trieste	Indirect	Active	Option
CDC2145021	Trieste	Indirect	Active	Option
CDC2145017	Trieste	Indirect	Active	Option
CDC2145016	Trieste	Indirect	Active	Option
CDC2145022	Trieste	Indirect	Active	Option
CDC2145015	Trieste	Indirect	Active	Option
CDC2145005	Trieste	Indirect	Active	Option
CDC2144995	Trieste	Indirect	Active	Option
CDC2144996	Trieste	Indirect	Active	Option
CDC2144997	Trieste	Indirect	Active	Option
CDC2144998	Trieste	Indirect	Active	Option
CDC2144999	Trieste	Indirect	Active	Option
CDC2145000	Trieste	Indirect	Active	Option
CDC2145001	Trieste	Indirect	Active	Option
CDC2145002	Trieste	Indirect	Active	Option
CDC2145014	Trieste	Indirect	Active	Option
CDC2145004	Trieste	Indirect	Active	Option
CDC2145013	Trieste	Indirect	Active	Option
CDC2145006	Trieste	Indirect	Active	Option
CDC2145007	Trieste	Indirect	Active	Option
CDC2145008	Trieste	Indirect	Active	Option
CDC2145009	Trieste	Indirect	Active	Option
CDC2145010	Trieste	Indirect	Active	Option
CDC2145011	Trieste	Indirect	Active	Option

Tenement or Claim Number	Location	Nature	Status	Interest
CDC2145012	Trieste	Indirect	Active	Option
CDC2145032	Trieste	Indirect	Active	Option
CDC2145003	Trieste	Indirect	Active	Option
CDC2145044	Trieste	Indirect	Active	Option
CDC2145028	Trieste	Indirect	Active	Option
CDC2145050	Trieste	Indirect	Active	Option
CDC2145049	Trieste	Indirect	Active	Option
CDC2145048	Trieste	Indirect	Active	Option
CDC2145047	Trieste	Indirect	Active	Option
CDC2145052	Trieste	Indirect	Active	Option
CDC2145045	Trieste	Indirect	Active	Option
CDC2145060	Trieste	Indirect	Active	Option
CDC2145033	Trieste	Indirect	Active	Option
CDC2145034	Trieste	Indirect	Active	Option
CDC2145035	Trieste	Indirect	Active	Option
CDC2145036	Trieste	Indirect	Active	Option
CDC2145041	Trieste	Indirect	Active	Option
CDC2145042	Trieste	Indirect	Active	Option
CDC2145046	Trieste	Indirect	Active	Option
CDC2144994	Trieste	Indirect	Active	Option
CDC2145025	Trieste	Indirect	Active	Option
CDC2145026	Trieste	Indirect	Active	Option
CDC2145027	Trieste	Indirect	Active	Option
CDC2145029	Trieste	Indirect	Active	Option
CDC2145043	Trieste	Indirect	Active	Option
CDC2145051	Trieste	Indirect	Active	Option
CDC2145066	Trieste	Indirect	Active	Option
CDC2145024	Trieste	Indirect	Active	Option
CDC2145065	Trieste	Indirect	Active	Option
CDC2144984	Trieste	Indirect	Active	Option
CDC2145064	Trieste	Indirect	Active	Option
CDC2145063	Trieste	Indirect	Active	Option
CDC2145062	Trieste	Indirect	Active	Option
CDC2145061	Trieste	Indirect	Active	Option
CDC2145067	Trieste	Indirect	Active	Option
CDC2144982	Trieste	Indirect	Active	Option
CDC2144986	Trieste	Indirect	Active	Option
CDC2144993	Trieste	Indirect	Active	Option
CDC2144976	Trieste	Indirect	Active	Option
CDC2144977	Trieste	Indirect	Active	Option
CDC2144978	Trieste	Indirect	Active	Option
CDC2144979	Trieste	Indirect	Active	Option

Tenement or Claim Number	Location	Nature	Status	Interest
CDC2144981	Trieste	Indirect	Active	Option
CDC2144983	Trieste	Indirect	Active	Option
CDC2144985	Trieste	Indirect	Active	Option
CDC2144987	Trieste	Indirect	Active	Option
CDC2144988	Trieste	Indirect	Active	Option
CDC2144989	Trieste	Indirect	Active	Option
CDC2144990	Trieste	Indirect	Active	Option
CDC2144991	Trieste	Indirect	Active	Option
CDC2144980	Trieste	Indirect	Active	Option
CDC2144992	Trieste	Indirect	Active	Option
CDC2054408	Trieste	Indirect	Active	Option
CDC2054431	Trieste	Indirect	Active	Option
CDC2054430	Trieste	Indirect	Active	Option
CDC2054429	Trieste	Indirect	Active	Option
CDC2054428	Trieste	Indirect	Active	Option
CDC2054427	Trieste	Indirect	Active	Option
CDC2054426	Trieste	Indirect	Active	Option
CDC2054425	Trieste	Indirect	Active	Option
CDC2054424	Trieste	Indirect	Active	Option
CDC2054423	Trieste	Indirect	Active	Option
CDC2054422	Trieste	Indirect	Active	Option
CDC2054421	Trieste	Indirect	Active	Option
CDC2054471	Trieste	Indirect	Active	Option
CDC2054409	Trieste	Indirect	Active	Option
CDC2054397	Trieste	Indirect	Active	Option
CDC2054400	Trieste	Indirect	Active	Option
CDC2054401	Trieste	Indirect	Active	Option
CDC2054402	Trieste	Indirect	Active	Option
CDC2054403	Trieste	Indirect	Active	Option
CDC2054399	Trieste	Indirect	Active	Option
CDC2054432	Trieste	Indirect	Active	Option
CDC2054404	Trieste	Indirect	Active	Option
CDC2054405	Trieste	Indirect	Active	Option
CDC2054406	Trieste	Indirect	Active	Option
CDC2054407	Trieste	Indirect	Active	Option
CDC2054492	Trieste	Indirect	Active	Option
CDC2054398	Trieste	Indirect	Active	Option
CDC2054420	Trieste	Indirect	Active	Option
CDC2054510	Trieste	Indirect	Active	Option
CDC2054469	Trieste	Indirect	Active	Option
CDC2054477	Trieste	Indirect	Active	Option
CDC2054478	Trieste	Indirect	Active	Option

Tenement or Claim Number	Location	Nature	Status	Interest
CDC2054486	Trieste	Indirect	Active	Option
CDC2054487	Trieste	Indirect	Active	Option
CDC2054488	Trieste	Indirect	Active	Option
CDC2054489	Trieste	Indirect	Active	Option
CDC2054490	Trieste	Indirect	Active	Option
CDC2054491	Trieste	Indirect	Active	Option
CDC2054493	Trieste	Indirect	Active	Option
CDC2054475	Trieste	Indirect	Active	Option
CDC2054509	Trieste	Indirect	Active	Option
CDC2054474	Trieste	Indirect	Active	Option
CDC2054511	Trieste	Indirect	Active	Option
CDC2054512	Trieste	Indirect	Active	Option
CDC2054513	Trieste	Indirect	Active	Option
CDC2054514	Trieste	Indirect	Active	Option
CDC2054515	Trieste	Indirect	Active	Option
CDC2054516	Trieste	Indirect	Active	Option
CDC2054517	Trieste	Indirect	Active	Option
CDC2054518	Trieste	Indirect	Active	Option
CDC2054521	Trieste	Indirect	Active	Option
CDC2054522	Trieste	Indirect	Active	Option
CDC2054523	Trieste	Indirect	Active	Option
CDC2054495	Trieste	Indirect	Active	Option
CDC2054453	Trieste	Indirect	Active	Option
CDC2054441	Trieste	Indirect	Active	Option
CDC2054442	Trieste	Indirect	Active	Option
CDC2054443	Trieste	Indirect	Active	Option
CDC2054444	Trieste	Indirect	Active	Option
CDC2054445	Trieste	Indirect	Active	Option
CDC2054446	Trieste	Indirect	Active	Option
CDC2054447	Trieste	Indirect	Active	Option
CDC2054448	Trieste	Indirect	Active	Option
CDC2054449	Trieste	Indirect	Active	Option
CDC2054450	Trieste	Indirect	Active	Option
CDC2054476	Trieste	Indirect	Active	Option
CDC2054452	Trieste	Indirect	Active	Option
CDC2054440	Trieste	Indirect	Active	Option
CDC2054454	Trieste	Indirect	Active	Option
CDC2054455	Trieste	Indirect	Active	Option
CDC2054463	Trieste	Indirect	Active	Option
CDC2054464	Trieste	Indirect	Active	Option
CDC2054465	Trieste	Indirect	Active	Option
CDC2054466	Trieste	Indirect	Active	Option

Tenement or Claim Number	Location	Nature	Status	Interest
CDC2054467	Trieste	Indirect	Active	Option
CDC2054468	Trieste	Indirect	Active	Option
CDC2054470	Trieste	Indirect	Active	Option
CDC2054472	Trieste	Indirect	Active	Option
CDC2054473	Trieste	Indirect	Active	Option
CDC2054451	Trieste	Indirect	Active	Option
CDC2054494	Trieste	Indirect	Active	Option
CDC61866	Trieste	Indirect	Active	Option
CDC61875	Trieste	Indirect	Active	Option
CDC61859	Trieste	Indirect	Active	Option
CDC61862	Trieste	Indirect	Active	Option
CDC61863	Trieste	Indirect	Active	Option
CDC61856	Trieste	Indirect	Active	Option
CDC61865	Trieste	Indirect	Active	Option
CDC61854	Trieste	Indirect	Active	Option
CDC61868	Trieste	Indirect	Active	Option
CDC61869	Trieste	Indirect	Active	Option
CDC61870	Trieste	Indirect	Active	Option
CDC61872	Trieste	Indirect	Active	Option
CDC61873	Trieste	Indirect	Active	Option
CDC61874	Trieste	Indirect	Active	Option
CDC61864	Trieste	Indirect	Active	Option
CDC61847	Trieste	Indirect	Active	Option
CDC61840	Trieste	Indirect	Active	Option
CDC61841	Trieste	Indirect	Active	Option
CDC61842	Trieste	Indirect	Active	Option
CDC61843	Trieste	Indirect	Active	Option
CDC61844	Trieste	Indirect	Active	Option
CDC61858	Trieste	Indirect	Active	Option
CDC61846	Trieste	Indirect	Active	Option
CDC61857	Trieste	Indirect	Active	Option
CDC61848	Trieste	Indirect	Active	Option
CDC61849	Trieste	Indirect	Active	Option
CDC61850	Trieste	Indirect	Active	Option
CDC61851	Trieste	Indirect	Active	Option
CDC61852	Trieste	Indirect	Active	Option
CDC61853	Trieste	Indirect	Active	Option
CDC61845	Trieste	Indirect	Active	Option
CDC61888	Trieste	Indirect	Active	Option
CDC61891	Trieste	Indirect	Active	Option
CDC61876	Trieste	Indirect	Active	Option
CDC61892	Trieste	Indirect	Active	Option

Tenement or Claim Number	Location	Nature	Status	Interest
CDC61889	Trieste	Indirect	Active	Option
CDC61887	Trieste	Indirect	Active	Option
CDC61886	Trieste	Indirect	Active	Option
CDC61885	Trieste	Indirect	Active	Option
CDC61884	Trieste	Indirect	Active	Option
CDC61881	Trieste	Indirect	Active	Option
CDC61880	Trieste	Indirect	Active	Option
CDC61879	Trieste	Indirect	Active	Option
CDC61877	Trieste	Indirect	Active	Option
CDC61855	Trieste	Indirect	Active	Option
CDC2085732	Trieste	Indirect	Active	Option
CDC2085740	Trieste	Indirect	Active	Option
CDC2085739	Trieste	Indirect	Active	Option
CDC2085737	Trieste	Indirect	Active	Option
CDC2085736	Trieste	Indirect	Active	Option
CDC2085735	Trieste	Indirect	Active	Option
CDC2085733	Trieste	Indirect	Active	Option
CDC2085741	Trieste	Indirect	Active	Option
CDC2085751	Trieste	Indirect	Active	Option
CDC2085734	Trieste	Indirect	Active	Option
CDC2085742	Trieste	Indirect	Active	Option
CDC2085743	Trieste	Indirect	Active	Option
CDC2085744	Trieste	Indirect	Active	Option
CDC2085746	Trieste	Indirect	Active	Option
CDC2085747	Trieste	Indirect	Active	Option
CDC2085748	Trieste	Indirect	Active	Option
CDC2085750	Trieste	Indirect	Active	Option
CDC2085753	Trieste	Indirect	Active	Option
CDC2085754	Trieste	Indirect	Active	Option
CDC2085755	Trieste	Indirect	Active	Option
CDC2085756	Trieste	Indirect	Active	Option
CDC2085757	Trieste	Indirect	Active	Option
CDC2085749	Trieste	Indirect	Active	Option
SFL 241	Scotty	Direct	Active	100%
SFL 242	Scotty	Direct	Active	100%
SFL 243	Scotty	Direct	Active	100%
SFL 244	Scotty	Direct	Active	100%
SFL 245	Scotty	Direct	Active	100%
SFL 246	Scotty	Direct	Active	100%
SFL 247	Scotty	Direct	Active	100%
SFL 248	Scotty	Direct	Active	100%
SFL 249	Scotty	Direct	Active	100%

Tenement or Claim Number	Location	Nature	Status	Interest
SFL 250	Scotty	Direct	Active	100%
SFL 251	Scotty	Direct	Active	100%
SFL 252	Scotty	Direct	Active	100%
SFL 253	Scotty	Direct	Active	100%
SFL 254	Scotty	Direct	Active	100%
SFL 255	Scotty	Direct	Active	100%
SFL 256	Scotty	Direct	Active	100%
SFL 257	Scotty	Direct	Active	100%
SFL 258	Scotty	Direct	Active	100%
SFL 259	Scotty	Direct	Active	100%
SFL 260	Scotty	Direct	Active	100%
SFL 261	Scotty	Direct	Active	100%
SFL 262	Scotty	Direct	Active	100%
SFL 263	Scotty	Direct	Active	100%
SFL 264	Scotty	Direct	Active	100%
SFL 265	Scotty	Direct	Active	100%
SFL 266	Scotty	Direct	Active	100%
SFL 267	Scotty	Direct	Active	100%
SFL 268	Scotty	Direct	Active	100%
SFL 269	Scotty	Direct	Active	100%
SFL 270	Scotty	Direct	Active	100%
SFL 271	Scotty	Direct	Active	100%
SFL 272	Scotty	Direct	Active	100%
SFL 273	Scotty	Direct	Active	100%
SFL 274	Scotty	Direct	Active	100%
SFL 275	Scotty	Direct	Active	100%
SFL 276	Scotty	Direct	Active	100%
SFL 277	Scotty	Direct	Active	100%
SFL 278	Scotty	Direct	Active	100%
SFL 279	Scotty	Direct	Active	100%
SFL 280	Scotty	Direct	Active	100%
SFL 281	Scotty	Direct	Active	100%
SFL 282	Scotty	Direct	Active	100%
SFL 283	Scotty	Direct	Active	100%
SFL 284	Scotty	Direct	Active	100%
SFL 285	Scotty	Direct	Active	100%
SFL 286	Scotty	Direct	Active	100%
SFL 287	Scotty	Direct	Active	100%
SFL 288	Scotty	Direct	Active	100%
SFL 289	Scotty	Direct	Active	100%
SFL 290	Scotty	Direct	Active	100%
SFL 291	Scotty	Direct	Active	100%

Tenement or Claim Number	Location	Nature	Status	Interest
SFL 292	Scotty	Direct	Active	100%
SFL 293	Scotty	Direct	Active	100%
SFL 294	Scotty	Direct	Active	100%
SFL 295	Scotty	Direct	Active	100%
SFL 296	Scotty	Direct	Active	100%
SFL 297	Scotty	Direct	Active	100%
SFL 298	Scotty	Direct	Active	100%
SFL 299	Scotty	Direct	Active	100%
SFL 300	Scotty	Direct	Active	100%
SFL 301	Scotty	Direct	Active	100%
SFL 302	Scotty	Direct	Active	100%
SFL 303	Scotty	Direct	Active	100%
SFL 304	Scotty	Direct	Active	100%
SFL 305	Scotty	Direct	Active	100%
SFL 306	Scotty	Direct	Active	100%
SFL 307	Scotty	Direct	Active	100%
SFL 308	Scotty	Direct	Active	100%
SFL 309	Scotty	Direct	Active	100%
SFL 310	Scotty	Direct	Active	100%
SFL 311	Scotty	Direct	Active	100%
SFL 312	Scotty	Direct	Active	100%
SFL 313	Scotty	Direct	Active	100%
SFL 314	Scotty	Direct	Active	100%
SFL 315	Scotty	Direct	Active	100%
SFL 316	Scotty	Direct	Active	100%
SFL 317	Scotty	Direct	Active	100%
SFL 318	Scotty	Direct	Active	100%
SFL 319	Scotty	Direct	Active	100%
SFL 320	Scotty	Direct	Active	100%
SFL 321	Scotty	Direct	Active	100%
SFL 322	Scotty	Direct	Active	100%
SFL 323	Scotty	Direct	Active	100%
SFL 324	Scotty	Direct	Active	100%
SFL 325	Scotty	Direct	Active	100%
SFL 326	Scotty	Direct	Active	100%
SFL 327	Scotty	Direct	Active	100%
SFL 328	Scotty	Direct	Active	100%
SFL 329	Scotty	Direct	Active	100%
SFL 330	Scotty	Direct	Active	100%
SFL 331	Scotty	Direct	Active	100%
SFL 332	Scotty	Direct	Active	100%
SFL 333	Scotty	Direct	Active	100%

Tenement or Claim Number	Location	Nature	Status	Interest
SFL 334	Scotty	Direct	Active	100%
SFL 335	Scotty	Direct	Active	100%
SFL 336	Scotty	Direct	Active	100%
SFL 337	Scotty	Direct	Active	100%
SFL 338	Scotty	Direct	Active	100%
SFL 339	Scotty	Direct	Active	100%
SFL 340	Scotty	Direct	Active	100%
SFL 341	Scotty	Direct	Active	100%
SFL 342	Scotty	Direct	Active	100%
SFL 343	Scotty	Direct	Active	100%
SFL 344	Scotty	Direct	Active	100%
SFL 345	Scotty	Direct	Active	100%
SFL 346	Scotty	Direct	Active	100%
SFL 347	Scotty	Direct	Active	100%
SFL 348	Scotty	Direct	Active	100%
SFL 349	Scotty	Direct	Active	100%
SFL 350	Scotty	Direct	Active	100%
SFL 351	Scotty	Direct	Active	100%
SFL 352	Scotty	Direct	Active	100%
SFL 353	Scotty	Direct	Active	100%
SFL 354	Scotty	Direct	Active	100%
SFL 355	Scotty	Direct	Active	100%
SFL 356	Scotty	Direct	Active	100%
SFL 357	Scotty	Direct	Active	100%
SFL 358	Scotty	Direct	Active	100%
SFL 359	Scotty	Direct	Active	100%
SFL 359	Scotty	Direct	Active	100%
SFL 361	Scotty	Direct	Active	100%
SFL 362	Scotty	Direct	Active	100%
SFL 363	Scotty	Direct	Active	100%
SFL 364	Scotty	Direct	Active	100%
SFL 365	Scotty	Direct	Active	100%
SFL 366	Scotty	Direct	Active	100%
SFL 367	Scotty	Direct	Active	100%
SFL 368	Scotty	Direct	Active	100%
SFL 369	Scotty	Direct	Active	100%
SFL 370	Scotty	Direct	Active	100%
SFL 371	Scotty	Direct	Active	100%
SFL 372	Scotty	Direct	Active	100%
SFL 373	Scotty	Direct	Active	100%
SFL 374	Scotty	Direct	Active	100%
SFL 375	Scotty	Direct	Active	100%

Tenement or Claim Number	Location	Nature	Status	Interest
SFL 376	Scotty	Direct	Active	100%
SFL 377	Scotty	Direct	Active	100%
SFL 378	Scotty	Direct	Active	100%
SFL 379	Scotty	Direct	Active	100%
SFL 380	Scotty	Direct	Active	100%
SFL 381	Scotty	Direct	Active	100%
SFL 382	Scotty	Direct	Active	100%
SFL 383	Scotty	Direct	Active	100%
SFL 384	Scotty	Direct	Active	100%
SFL 385	Scotty	Direct	Active	100%
SFL 386	Scotty	Direct	Active	100%
SFL 387	Scotty	Direct	Active	100%
SFL 388	Scotty	Direct	Active	100%
SFL 389	Scotty	Direct	Active	100%
SFL 390	Scotty	Direct	Active	100%
SFL 391	Scotty	Direct	Active	100%
SFL 392	Scotty	Direct	Active	100%
SFL 393	Scotty	Direct	Active	100%
SFL 394	Scotty	Direct	Active	100%
SFL 395	Scotty	Direct	Active	100%
SFL 396	Scotty	Direct	Active	100%
SFL 397	Scotty	Direct	Active	100%
SFL 398	Scotty	Direct	Active	100%
SFL 399	Scotty	Direct	Active	100%
SFL 400	Scotty	Direct	Active	100%
SFL 401	Scotty	Direct	Active	100%
SFL 402	Scotty	Direct	Active	100%
SFL 403	Scotty	Direct	Active	100%
SFL 404	Scotty	Direct	Active	100%
SFL 405	Scotty	Direct	Active	100%
SFL 406	Scotty	Direct	Active	100%
SFL 407	Scotty	Direct	Active	100%
SFL 408	Scotty	Direct	Active	100%
SFL 409	Scotty	Direct	Active	100%
SFL 410	Scotty	Direct	Active	100%
SFL 411	Scotty	Direct	Active	100%
SFL 412	Scotty	Direct	Active	100%
SFL 413	Scotty	Direct	Active	100%
SFL 414	Scotty	Direct	Active	100%
SFL 415	Scotty	Direct	Active	100%
SFL 416	Scotty	Direct	Active	100%
SFL 417	Scotty	Direct	Active	100%

Tenement or Claim Number	Location	Nature	Status	Interest
SFL 418	Scotty	Direct	Active	100%
SFL 419	Scotty	Direct	Active	100%
SFL 420	Scotty	Direct	Active	100%
SFL 421	Scotty	Direct	Active	100%
SFL 422	Scotty	Direct	Active	100%
SFL 423	Scotty	Direct	Active	100%
SFL 424	Scotty	Direct	Active	100%
SFL 425	Scotty	Direct	Active	100%
SFL 426	Scotty	Direct	Active	100%
SFL 427	Scotty	Direct	Active	100%
SFL 428	Scotty	Direct	Active	100%
SFL 429	Scotty	Direct	Active	100%
SFL 430	Scotty	Direct	Active	100%
SFL 433	Scotty	Direct	Active	100%
SFL 432	Scotty	Direct	Active	100%
SFL 433	Scotty	Direct	Active	100%
SFL 434	Scotty	Direct	Active	100%
SFL 435	Scotty	Direct	Active	100%
SFL 436	Scotty	Direct	Active	100%
SFL 437	Scotty	Direct	Active	100%
SFL 438	Scotty	Direct	Active	100%
SFL 439	Scotty	Direct	Active	100%
SFL 440	Scotty	Direct	Active	100%
SFL 441	Scotty	Direct	Active	100%
SFL 442	Scotty	Direct	Active	100%
SFL 443	Scotty	Direct	Active	100%
SFL 444	Scotty	Direct	Active	100%
SFL 445	Scotty	Direct	Active	100%
SFL 446	Scotty	Direct	Active	100%
SFL 447	Scotty	Direct	Active	100%
SFL 448	Scotty	Direct	Active	100%
SFL 449	Scotty	Direct	Active	100%
SFL 450	Scotty	Direct	Active	100%
SFL 451	Scotty	Direct	Active	100%
SFL 452	Scotty	Direct	Active	100%
SFL 453	Scotty	Direct	Active	100%
SFL 454	Scotty	Direct	Active	100%
SFL 455	Scotty	Direct	Active	100%
SFL 456	Scotty	Direct	Active	100%
SFL 457	Scotty	Direct	Active	100%
SFL 458	Scotty	Direct	Active	100%
SFL 459	Scotty	Direct	Active	100%

Tenement or Claim Number	Location	Nature	Status	Interest
SFL 460	Scotty	Direct	Active	100%
SFL 461	Scotty	Direct	Active	100%
SFL 462	Scotty	Direct	Active	100%
SFL 463	Scotty	Direct	Active	100%
SFL 464	Scotty	Direct	Active	100%
SFL 465	Scotty	Direct	Active	100%
SFL 466	Scotty	Direct	Active	100%
SFL 467	Scotty	Direct	Active	100%
SFL 468	Scotty	Direct	Active	100%
SFL 469	Scotty	Direct	Active	100%
SFL 470	Scotty	Direct	Active	100%
SFL 471	Scotty	Direct	Active	100%
SFL 472	Scotty	Direct	Active	100%
SFL 473	Scotty	Direct	Active	100%
SFL 474	Scotty	Direct	Active	100%
SFL 475	Scotty	Direct	Active	100%
SFL 476	Scotty	Direct	Active	100%
SFL 477	Scotty	Direct	Active	100%
SFL 478	Scotty	Direct	Active	100%
SFL 479	Scotty	Direct	Active	100%
SFL 480	Scotty	Direct	Active	100%
SFL 481	Scotty	Direct	Active	100%
SFL 482	Scotty	Direct	Active	100%
SFL 483	Scotty	Direct	Active	100%
SFL 484	Scotty	Direct	Active	100%
SFL 485	Scotty	Direct	Active	100%
SFL 486	Scotty	Direct	Active	100%
SFL 487	Scotty	Direct	Active	100%
SFL 488	Scotty	Direct	Active	100%
SFL 490	Scotty	Direct	Active	100%
SFL 491	Scotty	Direct	Active	100%
SFL 492	Scotty	Direct	Active	100%
SFL 493	Scotty	Direct	Active	100%
SFL 494	Scotty	Direct	Active	100%
SFL 495	Scotty	Direct	Active	100%
SFL 496	Scotty	Direct	Active	100%
SFL 497	Scotty	Direct	Active	100%
SFL 498	Scotty	Direct	Active	100%
SFL 499	Scotty	Direct	Active	100%
SFL 500	Scotty	Direct	Active	100%
SFL 501	Scotty	Direct	Active	100%
SFL 502	Scotty	Direct	Active	100%

Tenement or Claim Number	Location	Nature	Status	Interest
SFL 503	Scotty	Direct	Active	100%
SFL 504	Scotty	Direct	Active	100%
SFL 505	Scotty	Direct	Active	100%
SFL 506	Scotty	Direct	Active	100%
SFL 507	Scotty	Direct	Active	100%
SFL 508	Scotty	Direct	Active	100%
SFL 509	Scotty	Direct	Active	100%
SFL 510	Scotty	Direct	Active	100%
SFL 511	Scotty	Direct	Active	100%
SFL 512	Scotty	Direct	Active	100%
SFL 513	Scotty	Direct	Active	100%
SFL 514	Scotty	Direct	Active	100%
SFL 515	Scotty	Direct	Active	100%
SFL 516	Scotty	Direct	Active	100%
SFL 517	Scotty	Direct	Active	100%
SFL 518	Scotty	Direct	Active	100%
SFL 519	Scotty	Direct	Active	100%
SFL 520	Scotty	Direct	Active	100%
SFL 521	Scotty	Direct	Active	100%
SFL 522	Scotty	Direct	Active	100%
SFL 523	Scotty	Direct	Active	100%
SFL 524	Scotty	Direct	Active	100%
SFL 525	Scotty	Direct	Active	100%
SFL 526	Scotty	Direct	Active	100%
SFL 527	Scotty	Direct	Active	100%
SFL 528	Scotty	Direct	Active	100%
SFL 529	Scotty	Direct	Active	100%
SFL 530	Scotty	Direct	Active	100%
SFL 531	Scotty	Direct	Active	100%
SFL 532	Scotty	Direct	Active	100%
SFL 533	Scotty	Direct	Active	100%
SFL 534	Scotty	Direct	Active	100%
SFL 535	Scotty	Direct	Active	100%
SFL 536	Scotty	Direct	Active	100%
SFL 537	Scotty	Direct	Active	100%
SFL 538	Scotty	Direct	Active	100%
SFL 539	Scotty	Direct	Active	100%
SFL 540	Scotty	Direct	Active	100%
SFL 541	Scotty	Direct	Active	100%
SFL 542	Scotty	Direct	Active	100%
SFL 543	Scotty	Direct	Active	100%
SFL 544	Scotty	Direct	Active	100%

Tenement or Claim Number	Location	Nature	Status	Interest
SFL 545	Scotty	Direct	Active	100%
SFL 546	Scotty	Direct	Active	100%
SFL 547	Scotty	Direct	Active	100%
SFL 548	Scotty	Direct	Active	100%
SFL 549	Scotty	Direct	Active	100%
SFL 550	Scotty	Direct	Active	100%
SFL 551	Scotty	Direct	Active	100%
SFL 552	Scotty	Direct	Active	100%
SFL 553	Scotty	Direct	Active	100%
SFL 554	Scotty	Direct	Active	100%
SFL 555	Scotty	Direct	Active	100%
SFL 556	Scotty	Direct	Active	100%
SFL 557	Scotty	Direct	Active	100%
SFL 558	Scotty	Direct	Active	100%
SFL 559	Scotty	Direct	Active	100%
SFL 560	Scotty	Direct	Active	100%
SFL 561	Scotty	Direct	Active	100%
SFL 562	Scotty	Direct	Active	100%
SFL 563	Scotty	Direct	Active	100%
SFL 564	Scotty	Direct	Active	100%
SFL 565	Scotty	Direct	Active	100%
SFL 566	Scotty	Direct	Active	100%
SFL 567	Scotty	Direct	Active	100%
SFL 568	Scotty	Direct	Active	100%
SFL 569	Scotty	Direct	Active	100%
SFL 570	Scotty	Direct	Active	100%
SFL 571	Scotty	Direct	Active	100%
SFL 572	Scotty	Direct	Active	100%
SFL 573	Scotty	Direct	Active	100%
SFL 574	Scotty	Direct	Active	100%
SFL 575	Scotty	Direct	Active	100%
SFL 576	Scotty	Direct	Active	100%
SFL 577	Scotty	Direct	Active	100%
SFL 578	Scotty	Direct	Active	100%
SFL 579	Scotty	Direct	Active	100%
SFL 580	Scotty	Direct	Active	100%
SFL 581	Scotty	Direct	Active	100%
SFL 582	Scotty	Direct	Active	100%
SFL 583	Scotty	Direct	Active	100%
SFL 584	Scotty	Direct	Active	100%
SFL 585	Scotty	Direct	Active	100%
SFL 586	Scotty	Direct	Active	100%

Tenement or Claim Number	Location	Nature	Status	Interest
SFL 587	Scotty	Direct	Active	100%
SFL 588	Scotty	Direct	Active	100%
SFL 589	Scotty	Direct	Active	100%
SFL 590	Scotty	Direct	Active	100%
SFL 591	Scotty	Direct	Active	100%
SFL 592	Scotty	Direct	Active	100%
SFL 593	Scotty	Direct	Active	100%
SFL 594	Scotty	Direct	Active	100%
SFL 595	Scotty	Direct	Active	100%
SFL 596	Scotty	Direct	Active	100%
SFL 597	Scotty	Direct	Active	100%
SFL 598	Scotty	Direct	Active	100%
SFL 599	Scotty	Direct	Active	100%
SFL 600	Scotty	Direct	Active	100%
SFL 601	Scotty	Direct	Active	100%
SFL 602	Scotty	Direct	Active	100%
SFL 603	Scotty	Direct	Active	100%
SFL 604	Scotty	Direct	Active	100%
SFL 605	Scotty	Direct	Active	100%
SFL 606	Scotty	Direct	Active	100%
SFL 607	Scotty	Direct	Active	100%
SFL 608	Scotty	Direct	Active	100%
SFL 609	Scotty	Direct	Active	100%
SFL 610	Scotty	Direct	Active	100%
SFL 611	Scotty	Direct	Active	100%
SFL 612	Scotty	Direct	Active	100%
SFL 613	Scotty	Direct	Active	100%
SFL 614	Scotty	Direct	Active	100%
SFL 615	Scotty	Direct	Active	100%
SFL 616	Scotty	Direct	Active	100%
SFL 617	Scotty	Direct	Active	100%
SFL 618	Scotty	Direct	Active	100%
SFL 619	Scotty	Direct	Active	100%
SFL 620	Scotty	Direct	Active	100%
SFL 623	Scotty	Direct	Active	100%
SFL 622	Scotty	Direct	Active	100%
SFL 623	Scotty	Direct	Active	100%
SFL 624	Scotty	Direct	Active	100%
SFL 625	Scotty	Direct	Active	100%
SFL 626	Scotty	Direct	Active	100%
SFL 627	Scotty	Direct	Active	100%
SFL 628	Scotty	Direct	Active	100%

Tenement or Claim Number	Location	Nature	Status	Interest
SFL 629	Scotty	Direct	Active	100%
SFL 630	Scotty	Direct	Active	100%
SFL 631	Scotty	Direct	Active	100%
SFL 632	Scotty	Direct	Active	100%
SFL 633	Scotty	Direct	Active	100%
SFL 634	Scotty	Direct	Active	100%
SFL 635	Scotty	Direct	Active	100%
SFL 636	Scotty	Direct	Active	100%
SFL 637	Scotty	Direct	Active	100%
SFL 638	Scotty	Direct	Active	100%
SFL 639	Scotty	Direct	Active	100%
SFL 640	Scotty	Direct	Active	100%
SFL 641	Scotty	Direct	Active	100%
SFL 642	Scotty	Direct	Active	100%
SFL 643	Scotty	Direct	Active	100%
SFL 644	Scotty	Direct	Active	100%
SFL 645	Scotty	Direct	Active	100%
SFL 646	Scotty	Direct	Active	100%
SFL 647	Scotty	Direct	Active	100%
SFL 648	Scotty	Direct	Active	100%
SFL 649	Scotty	Direct	Active	100%
SFL 650	Scotty	Direct	Active	100%
SFL 651	Scotty	Direct	Active	100%
SFL 652	Scotty	Direct	Active	100%
SFL 653	Scotty	Direct	Active	100%
SFL 654	Scotty	Direct	Active	100%
SFL 655	Scotty	Direct	Active	100%
SFL 656	Scotty	Direct	Active	100%
SFL 657	Scotty	Direct	Active	100%
SFL 658	Scotty	Direct	Active	100%
SFL 663	Scotty	Direct	Active	100%
SFL 664	Scotty	Direct	Active	100%
SFL 665	Scotty	Direct	Active	100%
SFL 666	Scotty	Direct	Active	100%
SFL 671	Scotty	Direct	Active	100%
SFL 672	Scotty	Direct	Active	100%
SFL 673	Scotty	Direct	Active	100%
SFL 674	Scotty	Direct	Active	100%
SFL 675	Scotty	Direct	Active	100%
SFL 676	Scotty	Direct	Active	100%
SFL 677	Scotty	Direct	Active	100%
SFL 678	Scotty	Direct	Active	100%

Tenement or Claim Number	Location	Nature	Status	Interest
SFL 679	Scotty	Direct	Active	100%
SFL 680	Scotty	Direct	Active	100%
SFL 681	Scotty	Direct	Active	100%
SFL 682	Scotty	Direct	Active	100%
SFL 683	Scotty	Direct	Active	100%
SFL 684	Scotty	Direct	Active	100%
SFL 685	Scotty	Direct	Active	100%
SFL 686	Scotty	Direct	Active	100%
SFL 687	Scotty	Direct	Active	100%
SFL 688	Scotty	Direct	Active	100%
SFL 689	Scotty	Direct	Active	100%
SFL 690	Scotty	Direct	Active	100%
SFL 691	Scotty	Direct	Active	100%
SFL 692	Scotty	Direct	Active	100%
SFL 693	Scotty	Direct	Active	100%
SFL 694	Scotty	Direct	Active	100%
SFL 695	Scotty	Direct	Active	100%
SFL 696	Scotty	Direct	Active	100%
SFL 697	Scotty	Direct	Active	100%
SFL 698	Scotty	Direct	Active	100%
SFL 699	Scotty	Direct	Active	100%
SFL 700	Scotty	Direct	Active	100%
SFL 701	Scotty	Direct	Active	100%
SFL 726	Scotty	Direct	Active	100%
SFL 727	Scotty	Direct	Active	100%
SFL 728	Scotty	Direct	Active	100%
SFL 729	Scotty	Direct	Active	100%
SFL 750	Scotty	Direct	Active	100%
SFL 751	Scotty	Direct	Active	100%
SFL 752	Scotty	Direct	Active	100%
SFL 753	Scotty	Direct	Active	100%
SFL 794	Scotty	Direct	Active	100%
SFL 795	Scotty	Direct	Active	100%
SFL 796	Scotty	Direct	Active	100%
SFL 797	Scotty	Direct	Active	100%
SFL 798	Scotty	Direct	Active	100%
SFL 799	Scotty	Direct	Active	100%
SFL 812	Scotty	Direct	Active	100%
SFL 813	Scotty	Direct	Active	100%
SFL 814	Scotty	Direct	Active	100%
SFL 815	Scotty	Direct	Active	100%
SFL 816	Scotty	Direct	Active	100%

Tenement or Claim Number	Location	Nature	Status	Interest
SFL 817	Scotty	Direct	Active	100%
SFL 830	Scotty	Direct	Active	100%
SFL 831	Scotty	Direct	Active	100%
SFL 832	Scotty	Direct	Active	100%
SFL 833	Scotty	Direct	Active	100%
SFL 834	Scotty	Direct	Active	100%
SFL 835	Scotty	Direct	Active	100%
SFL 848	Scotty	Direct	Active	100%
SFL 849	Scotty	Direct	Active	100%
SFL 850	Scotty	Direct	Active	100%
SFL 851	Scotty	Direct	Active	100%
SFL 852	Scotty	Direct	Active	100%
SFL 853	Scotty	Direct	Active	100%
SFL 854	Scotty	Direct	Active	100%
SFL 855	Scotty	Direct	Active	100%
SFL 856	Scotty	Direct	Active	100%
SFL 857	Scotty	Direct	Active	100%
SFL 858	Scotty	Direct	Active	100%
SFL 859	Scotty	Direct	Active	100%
SFL 860	Scotty	Direct	Active	100%
SFL 861	Scotty	Direct	Active	100%
SFL 862	Scotty	Direct	Active	100%
SFL 863	Scotty	Direct	Active	100%
SFL 876	Scotty	Direct	Active	100%
SFL 877	Scotty	Direct	Active	100%
SFL 878	Scotty	Direct	Active	100%
SFL 879	Scotty	Direct	Active	100%
SFL 880	Scotty	Direct	Active	100%
SFL 881	Scotty	Direct	Active	100%
SFL 882	Scotty	Direct	Active	100%
SFL 883	Scotty	Direct	Active	100%
SFL 884	Scotty	Direct	Active	100%
SFL 885	Scotty	Direct	Active	100%
SFL 886	Scotty	Direct	Active	100%
SFL 887	Scotty	Direct	Active	100%
SFL 888	Scotty	Direct	Active	100%
SFL 889	Scotty	Direct	Active	100%
SFL 890	Scotty	Direct	Active	100%
SFL 893	Scotty	Direct	Active	100%
SFL 892	Scotty	Direct	Active	100%
SFL 893	Scotty	Direct	Active	100%
SFL 906	Scotty	Direct	Active	100%

Tenement or Claim Number	Location	Nature	Status	Interest
SFL 907	Scotty	Direct	Active	100%
SFL 908	Scotty	Direct	Active	100%
SFL 909	Scotty	Direct	Active	100%
SFL 910	Scotty	Direct	Active	100%
SFL 911	Scotty	Direct	Active	100%
SFL 912	Scotty	Direct	Active	100%
SFL 913	Scotty	Direct	Active	100%
SFL 914	Scotty	Direct	Active	100%
SFL 915	Scotty	Direct	Active	100%
SFL 916	Scotty	Direct	Active	100%
SFL 917	Scotty	Direct	Active	100%
SFL 918	Scotty	Direct	Active	100%
SFL 919	Scotty	Direct	Active	100%
SFL 920	Scotty	Direct	Active	100%
SFL 921	Scotty	Direct	Active	100%
SFL 922	Scotty	Direct	Active	100%
SFL 923	Scotty	Direct	Active	100%
SFL 924	Scotty	Direct	Active	100%
SFL 925	Scotty	Direct	Active	100%
SFL 926	Scotty	Direct	Active	100%
SFL 927	Scotty	Direct	Active	100%
SFL 928	Scotty	Direct	Active	100%
SFL 929	Scotty	Direct	Active	100%
SFL 930	Scotty	Direct	Active	100%
SFL 931	Scotty	Direct	Active	100%
SFL 932	Scotty	Direct	Active	100%
SFL 933	Scotty	Direct	Active	100%
SFL 934	Scotty	Direct	Active	100%
SFL 935	Scotty	Direct	Active	100%
SFL 936	Scotty	Direct	Active	100%
SFL 937	Scotty	Direct	Active	100%
SFL 938	Scotty	Direct	Active	100%
SFL 939	Scotty	Direct	Active	100%
SFL 940	Scotty	Direct	Active	100%
SFL 941	Scotty	Direct	Active	100%
SFL 954	Scotty	Direct	Active	100%
SFL 955	Scotty	Direct	Active	100%
SFL 956	Scotty	Direct	Active	100%
SFL 957	Scotty	Direct	Active	100%
SFL 958	Scotty	Direct	Active	100%
SFL 959	Scotty	Direct	Active	100%
SFL 960	Scotty	Direct	Active	100%

Tenement or Claim Number	Location	Nature	Status	Interest
SFL 963	Scotty	Direct	Active	100%
SFL 962	Scotty	Direct	Active	100%
SFL 963	Scotty	Direct	Active	100%
SFL 964	Scotty	Direct	Active	100%
SFL 965	Scotty	Direct	Active	100%
SFL 966	Scotty	Direct	Active	100%
SFL 967	Scotty	Direct	Active	100%
SFL 968	Scotty	Direct	Active	100%
SFL 969	Scotty	Direct	Active	100%
SFL 970	Scotty	Direct	Active	100%
SFL 971	Scotty	Direct	Active	100%
SFL 972	Scotty	Direct	Active	100%
SFL 973	Scotty	Direct	Active	100%
SFL 974	Scotty	Direct	Active	100%
SFL 975	Scotty	Direct	Active	100%
SFL 976	Scotty	Direct	Active	100%
SFL 977	Scotty	Direct	Active	100%
SFL 978	Scotty	Direct	Active	100%
SFL 979	Scotty	Direct	Active	100%
SFL 980	Scotty	Direct	Active	100%
SFL 981	Scotty	Direct	Active	100%
SFL 994	Scotty	Direct	Active	100%
SFL 995	Scotty	Direct	Active	100%
SFL 996	Scotty	Direct	Active	100%
SFL 997	Scotty	Direct	Active	100%
SFL 998	Scotty	Direct	Active	100%
SFL 999	Scotty	Direct	Active	100%
SFL 1000	Scotty	Direct	Active	100%
SFL 1001	Scotty	Direct	Active	100%
SFL 1002	Scotty	Direct	Active	100%
SFL 1003	Scotty	Direct	Active	100%
SFL 1003	Scotty	Direct	Active	100%
SFL 1005	Scotty	Direct	Active	100%
SFL 1006	Scotty	Direct	Active	100%
SFL 1007	Scotty	Direct	Active	100%
SFL 1008	Scotty	Direct	Active	100%
SFL 1009	Scotty	Direct	Active	100%
SFL 1010	Scotty	Direct	Active	100%
SFL 1011	Scotty	Direct	Active	100%
SFL 1012	Scotty	Direct	Active	100%
SFL 1013	Scotty	Direct	Active	100%
SFL 1014	Scotty	Direct	Active	100%

Tenement or Claim Number	Location	Nature	Status	Interest
SFL 1015	Scotty	Direct	Active	100%
SFL 1016	Scotty	Direct	Active	100%
SFL 1017	Scotty	Direct	Active	100%
SFL 1018	Scotty	Direct	Active	100%
SFL 1019	Scotty	Direct	Active	100%
SFL 1020	Scotty	Direct	Active	100%
SFL 1021	Scotty	Direct	Active	100%
SFL 1034	Scotty	Direct	Active	100%
SFL 1035	Scotty	Direct	Active	100%
SFL 1036	Scotty	Direct	Active	100%
SFL 1037	Scotty	Direct	Active	100%
SFL 1038	Scotty	Direct	Active	100%
SFL 1039	Scotty	Direct	Active	100%
SFL 1040	Scotty	Direct	Active	100%
SFL 1041	Scotty	Direct	Active	100%
SFL 1042	Scotty	Direct	Active	100%
SFL 1043	Scotty	Direct	Active	100%
SFL 1044	Scotty	Direct	Active	100%
SFL 1045	Scotty	Direct	Active	100%
SFL 1046	Scotty	Direct	Active	100%
SFL 1047	Scotty	Direct	Active	100%
SFL 1048	Scotty	Direct	Active	100%
SFL 1049	Scotty	Direct	Active	100%
SFL 1050	Scotty	Direct	Active	100%
SFL 1051	Scotty	Direct	Active	100%
SFL 1052	Scotty	Direct	Active	100%
SFL 1053	Scotty	Direct	Active	100%
SFL 1054	Scotty	Direct	Active	100%
SFL 1055	Scotty	Direct	Active	100%
SFL 1056	Scotty	Direct	Active	100%
SFL 1057	Scotty	Direct	Active	100%
SFL 1070	Scotty	Direct	Active	100%
SFL 1071	Scotty	Direct	Active	100%
SFL 1072	Scotty	Direct	Active	100%
SFL 1073	Scotty	Direct	Active	100%
SFL 1074	Scotty	Direct	Active	100%
SFL 1075	Scotty	Direct	Active	100%
SFL 1076	Scotty	Direct	Active	100%
SFL 1077	Scotty	Direct	Active	100%
SFL 1078	Scotty	Direct	Active	100%
SFL 1079	Scotty	Direct	Active	100%
SFL 1080	Scotty	Direct	Active	100%

Tenement or Claim Number	Location	Nature	Status	Interest
SFL 1081	Scotty	Direct	Active	100%
SFL 1082	Scotty	Direct	Active	100%
SFL 1083	Scotty	Direct	Active	100%
SFL 1084	Scotty	Direct	Active	100%
SFL 1085	Scotty	Direct	Active	100%
SFL 1086	Scotty	Direct	Active	100%
SFL 1087	Scotty	Direct	Active	100%
SFL 1088	Scotty	Direct	Active	100%
SFL 1089	Scotty	Direct	Active	100%
SFL 1090	Scotty	Direct	Active	100%
SFL 1091	Scotty	Direct	Active	100%
SFL 1092	Scotty	Direct	Active	100%
SFL 1093	Scotty	Direct	Active	100%
SFL 1106	Scotty	Direct	Active	100%
SFL 1107	Scotty	Direct	Active	100%
SFL 1108	Scotty	Direct	Active	100%
SFL 1109	Scotty	Direct	Active	100%
SFL 1110	Scotty	Direct	Active	100%
SFL 1111	Scotty	Direct	Active	100%
SFL 1112	Scotty	Direct	Active	100%
SFL 1113	Scotty	Direct	Active	100%
SFL 1114	Scotty	Direct	Active	100%
SFL 1115	Scotty	Direct	Active	100%
SFL 1116	Scotty	Direct	Active	100%
SFL 1117	Scotty	Direct	Active	100%
SFL 1118	Scotty	Direct	Active	100%
SFL 1119	Scotty	Direct	Active	100%
SFL 1120	Scotty	Direct	Active	100%
SFL 1121	Scotty	Direct	Active	100%
SFL 1122	Scotty	Direct	Active	100%
SFL 1123	Scotty	Direct	Active	100%
SFL 1124	Scotty	Direct	Active	100%
SFL 1125	Scotty	Direct	Active	100%
SFL 1126	Scotty	Direct	Active	100%
SFL 1127	Scotty	Direct	Active	100%
SFL 1128	Scotty	Direct	Active	100%
SFL 1129	Scotty	Direct	Active	100%
SFL 1142	Scotty	Direct	Active	100%
SFL 1143	Scotty	Direct	Active	100%
SFL 1144	Scotty	Direct	Active	100%
SFL 1145	Scotty	Direct	Active	100%
SFL 1146	Scotty	Direct	Active	100%

Tenement or Claim Number	Location	Nature	Status	Interest
SFL 1147	Scotty	Direct	Active	100%
SFL 1148	Scotty	Direct	Active	100%
SFL 1149	Scotty	Direct	Active	100%
SFL 1150	Scotty	Direct	Active	100%
SFL 1151	Scotty	Direct	Active	100%
SFL 1152	Scotty	Direct	Active	100%
SFL 1153	Scotty	Direct	Active	100%
SFL 1154	Scotty	Direct	Active	100%
SFL 1155	Scotty	Direct	Active	100%
SFL 1156	Scotty	Direct	Active	100%
SFL 1157	Scotty	Direct	Active	100%
SFL 1158	Scotty	Direct	Active	100%
SFL 1159	Scotty	Direct	Active	100%
SFL 1160	Scotty	Direct	Active	100%
SFL 1161	Scotty	Direct	Active	100%
SFL 1162	Scotty	Direct	Active	100%
SFL 1163	Scotty	Direct	Active	100%
SFL 1164	Scotty	Direct	Active	100%
SFL 1165	Scotty	Direct	Active	100%
M15/1876	Gibraltar South	Direct	Application	80%
P15/6074	Gibraltar South	Direct	Granted	80%
P15/6075	Gibraltar South	Direct	Granted	80%
P15/6076	Gibraltar South	Direct	Granted	80%
P15/6077	Gibraltar South	Direct	Granted	80%
P15/6078	Gibraltar South	Direct	Granted	80%
P15/6114	Gibraltar South	Direct	Granted	80%
P15/6115	Gibraltar South	Direct	Granted	80%
P26/4112	Monger North	Direct	Granted	80%
P26/4139	Monger North	Direct	Granted	80%
P26/4141	Monger North	Direct	Granted	80%
P26/4143	Monger North	Direct	Granted	80%
P26/4275	Monger North	Direct	Granted	80%
P26/4507	Monger North	Direct	Granted	80%
P26/4089	Monger North	Direct	Granted	80%
P26/4103	Monger North	Direct	Granted	80%
P26/4292	Monger North	Direct	Granted	80%
P26/4101	Monger North	Direct	Granted	80%
P26/4102	Monger North	Direct	Granted	80%
P26/4115	Monger North	Direct	Granted	80%
P26/4142	Monger North	Direct	Granted	80%
P26/4114	Monger North	Direct	Granted	80%
P26/4276	Monger North	Direct	Granted	80%

Tenement or Claim Number	Location	Nature	Status	Interest
P26/4104	Monger North	Direct	Granted	80%
P25/2348	Monger South	Direct	Granted	80%
P25/2349	Monger South	Direct	Granted	80%
P25/2493	Monger South	Direct	Granted	80%
P26/4086	Monger South	Direct	Granted	80%
P26/4106	Monger South	Direct	Granted	80%
P26/4107	Monger South	Direct	Granted	80%
P26/4108	Monger South	Direct	Granted	80%
P26/4109	Monger South	Direct	Granted	80%
P26/4110	Monger South	Direct	Granted	80%
P26/4111	Monger South	Direct	Granted	80%
P26/4113	Monger South	Direct	Granted	80%
P26/4310	Monger South	Direct	Granted	80%
P26/4409	Monger South	Direct	Granted	80%
Nevlith 1	Scotty	Direct	Staked	100%
Nevlith 2	Scotty	Direct	Staked	100%
Nevlith 3	Scotty	Direct	Staked	100%
Nevlith 4	Scotty	Direct	Staked	100%
Nevlith 5	Scotty	Direct	Staked	100%
Nevlith 6	Scotty	Direct	Staked	100%
Nevlith 7	Scotty	Direct	Staked	100%
Nevlith 8	Scotty	Direct	Staked	100%
Nevlith 9	Scotty	Direct	Staked	100%
Nevlith 10	Scotty	Direct	Staked	100%
Nevlith 11	Scotty	Direct	Staked	100%
Nevlith 12	Scotty	Direct	Staked	100%
Nevlith 13	Scotty	Direct	Staked	100%
Nevlith 14	Scotty	Direct	Staked	100%
Nevlith 15	Scotty	Direct	Staked	100%
Nevlith 16	Scotty	Direct	Staked	100%
Nevlith 17	Scotty	Direct	Staked	100%
Nevlith 18	Scotty	Direct	Staked	100%
Nevlith 19	Scotty	Direct	Staked	100%
Nevlith 20	Scotty	Direct	Staked	100%
Nevlith 21	Scotty	Direct	Staked	100%
Nevlith 22	Scotty	Direct	Staked	100%
Nevlith 23	Scotty	Direct	Staked	100%
Nevlith 24	Scotty	Direct	Staked	100%
Nevlith 25	Scotty	Direct	Staked	100%
Nevlith 26	Scotty	Direct	Staked	100%
Nevlith 27	Scotty	Direct	Staked	100%
Nevlith 28	Scotty	Direct	Staked	100%

Tenement or Claim Number	Location	Nature	Status	Interest
Nevlith 29	Scotty	Direct	Staked	100%
Nevlith 30	Scotty	Direct	Staked	100%
Nevlith 31	Scotty	Direct	Staked	100%
Nevlith 32	Scotty	Direct	Staked	100%
Nevlith 33	Scotty	Direct	Staked	100%
Nevlith 34	Scotty	Direct	Staked	100%
Nevlith 35	Scotty	Direct	Staked	100%
Nevlith 36	Scotty	Direct	Staked	100%
Nevlith 37	Scotty	Direct	Staked	100%
Nevlith 38	Scotty	Direct	Staked	100%
Nevlith 39	Scotty	Direct	Staked	100%
Nevlith 40	Scotty	Direct	Staked	100%
Nevlith 41	Scotty	Direct	Staked	100%
Nevlith 42	Scotty	Direct	Staked	100%
Nevlith 43	Scotty	Direct	Staked	100%
Nevlith 44	Scotty	Direct	Staked	100%
Nevlith 45	Scotty	Direct	Staked	100%
Nevlith 46	Scotty	Direct	Staked	100%
Nevlith 47	Scotty	Direct	Staked	100%
Nevlith 48	Scotty	Direct	Staked	100%
Nevlith 49	Scotty	Direct	Staked	100%
Nevlith 50	Scotty	Direct	Staked	100%
Nevlith 51	Scotty	Direct	Staked	100%
Nevlith 52	Scotty	Direct	Staked	100%
Nevlith 53	Scotty	Direct	Staked	100%
Nevlith 54	Scotty	Direct	Staked	100%
Nevlith 55	Scotty	Direct	Staked	100%
Nevlith 56	Scotty	Direct	Staked	100%
Nevlith 57	Scotty	Direct	Staked	100%
Nevlith 58	Scotty	Direct	Staked	100%
Nevlith 59	Scotty	Direct	Staked	100%
Nevlith 60	Scotty	Direct	Staked	100%
Nevlith 61	Scotty	Direct	Staked	100%
Nevlith 62	Scotty	Direct	Staked	100%
Nevlith 63	Scotty	Direct	Staked	100%
Nevlith 64	Scotty	Direct	Staked	100%
Nevlith 65	Scotty	Direct	Staked	100%
Nevlith 66	Scotty	Direct	Staked	100%
Nevlith 67	Scotty	Direct	Staked	100%
Nevlith 68	Scotty	Direct	Staked	100%
Nevlith 69	Scotty	Direct	Staked	100%
Nevlith 70	Scotty	Direct	Staked	100%

Tenement or Claim Number	Location	Nature	Status	Interest
Nevlith 71	Scotty	Direct	Staked	100%
Nevlith 72	Scotty	Direct	Staked	100%
Nevlith 73	Scotty	Direct	Staked	100%
Nevlith 74	Scotty	Direct	Staked	100%
Nevlith 75	Scotty	Direct	Staked	100%
Nevlith 76	Scotty	Direct	Staked	100%
Nevlith 77	Scotty	Direct	Staked	100%
Nevlith 78	Scotty	Direct	Staked	100%
Nevlith 79	Scotty	Direct	Staked	100%
Nevlith 80	Scotty	Direct	Staked	100%
Nevlith 81	Scotty	Direct	Staked	100%
Nevlith 82	Scotty	Direct	Staked	100%
Nevlith 83	Scotty	Direct	Staked	100%
Nevlith 84	Scotty	Direct	Staked	100%
Nevlith 85	Scotty	Direct	Staked	100%
Nevlith 86	Scotty	Direct	Staked	100%
Nevlith 87	Scotty	Direct	Staked	100%
Nevlith 88	Scotty	Direct	Staked	100%
Nevlith 89	Scotty	Direct	Staked	100%
Nevlith 90	Scotty	Direct	Staked	100%
Nevlith 91	Scotty	Direct	Staked	100%
Nevlith 92	Scotty	Direct	Staked	100%
Nevlith 93	Scotty	Direct	Staked	100%
Nevlith 94	Scotty	Direct	Staked	100%
Nevlith 95	Scotty	Direct	Staked	100%
Nevlith 96	Scotty	Direct	Staked	100%
Nevlith 97	Scotty	Direct	Staked	100%
Nevlith 98	Scotty	Direct	Staked	100%
Nevlith 99	Scotty	Direct	Staked	100%
Nevlith 100	Scotty	Direct	Staked	100%
Nevlith 101	Scotty	Direct	Staked	100%
Nevlith 102	Scotty	Direct	Staked	100%
Nevlith 103	Scotty	Direct	Staked	100%
Nevlith 104	Scotty	Direct	Staked	100%
Nevlith 105	Scotty	Direct	Staked	100%
Nevlith 106	Scotty	Direct	Staked	100%
Nevlith 107	Scotty	Direct	Staked	100%
Nevlith 108	Scotty	Direct	Staked	100%
Nevlith 109	Scotty	Direct	Staked	100%
Nevlith 110	Scotty	Direct	Staked	100%
Nevlith 111	Scotty	Direct	Staked	100%
Nevlith 112	Scotty	Direct	Staked	100%

Tenement or Claim Number	Location	Nature	Status	Interest
Nevlith 113	Scotty	Direct	Staked	100%
Nevlith 114	Scotty	Direct	Staked	100%
Nevlith 115	Scotty	Direct	Staked	100%
Nevlith 116	Scotty	Direct	Staked	100%
Nevlith 117	Scotty	Direct	Staked	100%
Nevlith 118	Scotty	Direct	Staked	100%
Nevlith 119	Scotty	Direct	Staked	100%
Nevlith 120	Scotty	Direct	Staked	100%
Nevlith 121	Scotty	Direct	Staked	100%
Nevlith 122	Scotty	Direct	Staked	100%
Nevlith 123	Scotty	Direct	Staked	100%
Nevlith 124	Scotty	Direct	Staked	100%
Nevlith 125	Scotty	Direct	Staked	100%
Nevlith 126	Scotty	Direct	Staked	100%
Nevlith 127	Scotty	Direct	Staked	100%
Nevlith 128	Scotty	Direct	Staked	100%
Nevlith 129	Scotty	Direct	Staked	100%
Nevlith 130	Scotty	Direct	Staked	100%
Nevlith 131	Scotty	Direct	Staked	100%
Nevlith 132	Scotty	Direct	Staked	100%
Nevlith 133	Scotty	Direct	Staked	100%
Nevlith 134	Scotty	Direct	Staked	100%
Nevlith 135	Scotty	Direct	Staked	100%
Nevlith 136	Scotty	Direct	Staked	100%
Nevlith 137	Scotty	Direct	Staked	100%
Nevlith 138	Scotty	Direct	Staked	100%
Nevlith 139	Scotty	Direct	Staked	100%
Nevlith 140	Scotty	Direct	Staked	100%
Nevlith 141	Scotty	Direct	Staked	100%
Nevlith 142	Scotty	Direct	Staked	100%
Nevlith 143	Scotty	Direct	Staked	100%
Nevlith 144	Scotty	Direct	Staked	100%
Nevlith 145	Scotty	Direct	Staked	100%
Nevlith 146	Scotty	Direct	Staked	100%
Nevlith 147	Scotty	Direct	Staked	100%
Nevlith 148	Scotty	Direct	Staked	100%
Nevlith 149	Scotty	Direct	Staked	100%
Nevlith 150	Scotty	Direct	Staked	100%
Nevlith 151	Scotty	Direct	Staked	100%
Nevlith 152	Scotty	Direct	Staked	100%
Nevlith 153	Scotty	Direct	Staked	100%
Nevlith 154	Scotty	Direct	Staked	100%

Tenement or Claim Number	Location	Nature	Status	Interest
Nevlith 155	Scotty	Direct	Staked	100%
Nevlith 156	Scotty	Direct	Staked	100%
Nevlith 157	Scotty	Direct	Staked	100%
Nevlith 158	Scotty	Direct	Staked	100%
Nevlith 159	Scotty	Direct	Staked	100%
Nevlith 160	Scotty	Direct	Staked	100%
Nevlith 161	Scotty	Direct	Staked	100%
Nevlith 162	Scotty	Direct	Staked	100%
Nevlith 163	Scotty	Direct	Staked	100%
Nevlith 164	Scotty	Direct	Staked	100%
Nevlith 165	Scotty	Direct	Staked	100%
Nevlith 166	Scotty	Direct	Staked	100%
Nevlith 167	Scotty	Direct	Staked	100%
Nevlith 168	Scotty	Direct	Staked	100%
Nevlith 169	Scotty	Direct	Staked	100%
Nevlith 170	Scotty	Direct	Staked	100%
Nevlith 171	Scotty	Direct	Staked	100%
Nevlith 172	Scotty	Direct	Staked	100%
Nevlith 173	Scotty	Direct	Staked	100%
Nevlith 174	Scotty	Direct	Staked	100%
Nevlith 175	Scotty	Direct	Staked	100%
Nevlith 176	Scotty	Direct	Staked	100%
Nevlith 177	Scotty	Direct	Staked	100%
Nevlith 178	Scotty	Direct	Staked	100%
Nevlith 179	Scotty	Direct	Staked	100%
Nevlith 180	Scotty	Direct	Staked	100%
Nevlith 181	Scotty	Direct	Staked	100%
Nevlith 182	Scotty	Direct	Staked	100%
Nevlith 183	Scotty	Direct	Staked	100%
Nevlith 184	Scotty	Direct	Staked	100%
Nevlith 185	Scotty	Direct	Staked	100%
Nevlith 186	Scotty	Direct	Staked	100%
Nevlith 187	Scotty	Direct	Staked	100%
Nevlith 188	Scotty	Direct	Staked	100%
Nevlith 189	Scotty	Direct	Staked	100%
Nevlith 190	Scotty	Direct	Staked	100%
Nevlith 191	Scotty	Direct	Staked	100%
Nevlith 192	Scotty	Direct	Staked	100%
Nevlith 193	Scotty	Direct	Staked	100%
Nevlith 194	Scotty	Direct	Staked	100%
Nevlith 195	Scotty	Direct	Staked	100%
Nevlith 196	Scotty	Direct	Staked	100%

Tenement or Claim Number	Location	Nature	Status	Interest
Nevlith 197	Scotty	Direct	Staked	100%
Nevlith 198	Scotty	Direct	Staked	100%
Nevlith 199	Scotty	Direct	Staked	100%
Nevlith 200	Scotty	Direct	Staked	100%
Nevlith 201	Scotty	Direct	Staked	100%
Nevlith 202	Scotty	Direct	Staked	100%
Nevlith 203	Scotty	Direct	Staked	100%
Nevlith 204	Scotty	Direct	Staked	100%
Nevlith 205	Scotty	Direct	Staked	100%
Nevlith 206	Scotty	Direct	Staked	100%
Nevlith 207	Scotty	Direct	Staked	100%
Nevlith 208	Scotty	Direct	Staked	100%
Nevlith 209	Scotty	Direct	Staked	100%
Nevlith 210	Scotty	Direct	Staked	100%
Nevlith 211	Scotty	Direct	Staked	100%
Nevlith 212	Scotty	Direct	Staked	100%
Nevlith 213	Scotty	Direct	Staked	100%
Nevlith 214	Scotty	Direct	Staked	100%
Nevlith 215	Scotty	Direct	Staked	100%
Nevlith 216	Scotty	Direct	Staked	100%
Nevlith 217	Scotty	Direct	Staked	100%
Nevlith 218	Scotty	Direct	Staked	100%
Nevlith 219	Scotty	Direct	Staked	100%
Nevlith 220	Scotty	Direct	Staked	100%
Nevlith 221	Scotty	Direct	Staked	100%
Nevlith 222	Scotty	Direct	Staked	100%
Nevlith 223	Scotty	Direct	Staked	100%
Nevlith 224	Scotty	Direct	Staked	100%
Nevlith 225	Scotty	Direct	Staked	100%
Nevlith 226	Scotty	Direct	Staked	100%
Nevlith 227	Scotty	Direct	Staked	100%
Nevlith 228	Scotty	Direct	Staked	100%
Nevlith 229	Scotty	Direct	Staked	100%
Nevlith 230	Scotty	Direct	Staked	100%
Nevlith 231	Scotty	Direct	Staked	100%
Nevlith 232	Scotty	Direct	Staked	100%
Nevlith 233	Scotty	Direct	Staked	100%
Nevlith 234	Scotty	Direct	Staked	100%
Nevlith 235	Scotty	Direct	Staked	100%
Nevlith 236	Scotty	Direct	Staked	100%
Nevlith 237	Scotty	Direct	Staked	100%
Nevlith 238	Scotty	Direct	Staked	100%

Tenement or Claim Number	Location	Nature	Status	Interest
Nevlith 239	Scotty	Direct	Staked	100%
Nevlith 240	Scotty	Direct	Staked	100%
Nevlith 241	Scotty	Direct	Staked	100%
Nevlith 243	Scotty	Direct	Staked	100%
Nevlith 244	Scotty	Direct	Staked	100%
Nevlith 245	Scotty	Direct	Staked	100%
Nevlith 246	Scotty	Direct	Staked	100%
Nevlith 247	Scotty	Direct	Staked	100%
Nevlith 248	Scotty	Direct	Staked	100%
Nevlith 249	Scotty	Direct	Staked	100%
Nevlith 250	Scotty	Direct	Staked	100%
Nevlith 251	Scotty	Direct	Staked	100%
Nevlith 252	Scotty	Direct	Staked	100%
Nevlith 253	Scotty	Direct	Staked	100%
Nevlith 254	Scotty	Direct	Staked	100%
Nevlith 255	Scotty	Direct	Staked	100%
Nevlith 256	Scotty	Direct	Staked	100%
Nevlith 257	Scotty	Direct	Staked	100%
Nevlith 258	Scotty	Direct	Staked	100%
Nevlith 259	Scotty	Direct	Staked	100%
Nevlith 260	Scotty	Direct	Staked	100%
Nevlith 261	Scotty	Direct	Staked	100%
Nevlith 262	Scotty	Direct	Staked	100%
Nevlith 264	Scotty	Direct	Staked	100%

Appendix 5B

Mining exploration entity or oil and gas exploration entity quarterly cash flow report

Name of entity

Loyal Lithium Limited (ASX: LLI)

ABN

20 644 564 241

Quarter ended ("current quarter")

30 September 2023

Consolidated statement of cash flows	Current quarter \$A'000	Year to date (9 months) \$A'000
1. Cash flows from operating activities		
1.1 Receipts from customers	-	22
1.2 Payments for		
(a) exploration & evaluation	(1,375)	(3,002)
(b) development		
(c) production		
(d) staff costs	(174)	(402)
(e) administration and corporate costs	(220)	(879)
1.3 Dividends received (see note 3)		
1.4 Interest received	42	89
1.5 Interest and other costs of finance paid		
1.6 Income taxes paid		
1.7 Government grants and tax incentives		
1.8 Other (provide details if material)		
(a) GST & Payroll tax	24	81
1.9 Net cash from / (used in) operating activities	(1,703)	(4,091)
2. Cash flows from investing activities		
2.1 Payments to acquire or for:		
(a) Entities		
(b) Tenements	(40)	(121)
(c) property, plant and equipment		
(d) exploration & evaluation	(60)	(74)
(e) investments		
(f) other non-current assets		

Mining exploration entity or oil and gas exploration entity quarterly cash flow report

Consolidated statement of cash flows		Current quarter \$A'000	Year to date (9 months) \$A'000
2.2	Proceeds from the disposal of:		
	(a) entities		
	(b) tenements		
	(c) property, plant and equipment		
	(d) investments		
	(e) other non-current assets		
2.3	Cash flows from loans to other entities	-	-
2.4	Dividends received (see note 3)		
2.5	Other (provide details if material)		
2.6	Net cash from / (used in) investing activities	(100)	(195)
3.	Cash flows from financing activities		
3.1	Proceeds from issues of equity securities (excluding convertible debt securities)	8,229*	8,229*
3.2	Proceeds from issue of convertible debt securities		
3.3	Proceeds from exercise of options		
3.4	Transaction costs related to issues of equity securities or convertible debt securities	(548)	(869)
3.5	Proceeds from borrowings		
3.6	Repayment of borrowings		
3.7	Transaction costs related to loans and borrowings		
3.8	Dividends paid		
3.9	Other (provide details if material)	-	-
3.10	Net cash from / (used in) financing activities	(7,681)	(7,360)
4.	Net increase / (decrease) in cash and cash equivalents for the period		
4.1	Cash and cash equivalents at beginning of period	3,752	6,573
4.2	Net cash from / (used in) operating activities (item 1.9 above)	(1,703)	(4,091)
4.3	Net cash from / (used in) investing activities (item 2.6 above)	(100)	(195)
4.4	Net cash from / (used in) financing activities (item 3.10 above)	7,681	7,360

* Excluding the funds from the re-compliance Capital Raise.

Mining exploration entity or oil and gas exploration entity quarterly cash flow report

Consolidated statement of cash flows		Current quarter \$A'000	Year to date (9 months) \$A'000
4.5	Effect of movement in exchange rates on cash held	(29)	(46)
4.6	Cash and cash equivalents at end of period	9,601	9,601

5.	Reconciliation of cash and cash equivalents at the end of the quarter (as shown in the consolidated statement of cash flows) to the related items in the accounts	Current quarter \$A'000	Previous quarter \$A'000
5.1	Bank balances	9,601	3,752
5.2	Call deposits		
5.3	Bank overdrafts		
5.4	Other (provide details)		
5.5	Cash and cash equivalents at end of quarter (should equal item 4.6 above)	9,601	3,752

6.	Payments to related parties of the entity and their associates	Current quarter \$A'000
6.1	Aggregate amount of payments to related parties and their associates included in item 1	146
6.2	Aggregate amount of payments to related parties and their associates included in item 2	-
<i>Note: if any amounts are shown in items 6.1 or 6.2, your quarterly activity report must include a description of, and an explanation for, such payments.</i>		

7.	Financing facilities <i>Note: the term "facility" includes all forms of financing arrangements available to the entity. Add notes as necessary for an understanding of the sources of finance available to the entity.</i>	Total facility amount at quarter end \$A'000	Amount drawn at quarter end \$A'000
7.1	Loan facilities		
7.2	Credit standby arrangements		
7.3	Other (please specify)		
7.4	Total financing facilities		
7.5	Unused financing facilities available at quarter end		
7.6	Include in the box below a description of each facility above, including the lender, interest rate, maturity date and whether it is secured or unsecured. If any additional financing facilities have been entered into or are proposed to be entered into after quarter end, include a note providing details of those facilities as well.		

Mining exploration entity or oil and gas exploration entity quarterly cash flow report

8. Estimated cash available for future operating activities	\$A'000
8.1 Net cash from / (used in) operating activities (item 1.9)	(1,703)
8.2 (Payments for exploration & evaluation classified as investing activities) (item 2.1(d))	(60)
8.3 Total relevant outgoings (item 8.1 + item 8.2)	(1,763)
8.4 Cash and cash equivalents at quarter end (item 4.6)	9,601
8.5 Unused finance facilities available at quarter end (item 7.5)	-
8.6 Total available funding (item 8.4 + item 8.5)	9,601
8.7 Estimated quarters of funding available (item 8.6 divided by item 8.3)	5.45
<i>Note: if the entity has reported positive relevant outgoings (ie a net cash inflow) in item 8.3, answer item 8.7 as "N/A". Otherwise, a figure for the estimated quarters of funding available must be included in item 8.7.</i>	
8.8 If item 8.7 is less than 2 quarters, please provide answers to the following questions:	
8.8.1 Does the entity expect that it will continue to have the current level of net operating cash flows for the time being and, if not, why not?	
Answer: N/A	
8.8.2 Has the entity taken any steps, or does it propose to take any steps, to raise further cash to fund its operations and, if so, what are those steps and how likely does it believe that they will be successful?	
Answer: N/A	
8.8.3 Does the entity expect to be able to continue its operations and to meet its business objectives and, if so, on what basis?	
Answer: N/A	
<i>Note: where item 8.7 is less than 2 quarters, all of questions 8.8.1, 8.8.2 and 8.8.3 above must be answered.</i>	

Compliance statement

- 1 This statement has been prepared in accordance with accounting standards and policies which comply with Listing Rule 19.11A.
- 2 This statement gives a true and fair view of the matters disclosed.

Date: 31 October 2023.....

Authorised by:**Board of Directors**.....
(Name of body or officer authorising release – see note 4)

Notes

1. This quarterly cash flow report and the accompanying activity report provide a basis for informing the market about the entity's activities for the past quarter, how they have been financed and the effect this has had on its cash position. An entity that wishes to disclose additional information over and above the minimum required under the Listing Rules is encouraged to do so.
2. If this quarterly cash flow report has been prepared in accordance with Australian Accounting Standards, the definitions in, and provisions of, *AASB 6: Exploration for and Evaluation of Mineral Resources* and *AASB 107: Statement of Cash Flows* apply to this report. If this quarterly cash flow report has been prepared in accordance with other accounting standards agreed by ASX pursuant to Listing Rule 19.11A, the corresponding equivalent standards apply to this report.
3. Dividends received may be classified either as cash flows from operating activities or cash flows from investing activities, depending on the accounting policy of the entity.
4. If this report has been authorised for release to the market by your board of directors, you can insert here: "By the board". If it has been authorised for release to the market by a committee of your board of directors, you can insert here: "By the [name of board committee – eg Audit and Risk Committee]". If it has been authorised for release to the market by a disclosure committee, you can insert here: "By the Disclosure Committee".
5. If this report has been authorised for release to the market by your board of directors and you wish to hold yourself out as complying with recommendation 4.2 of the ASX Corporate Governance Council's *Corporate Governance Principles and Recommendations*, the board should have received a declaration from its CEO and CFO that, in their opinion, the financial records of the entity have been properly maintained, that this report complies with the appropriate accounting standards and gives a true and fair view of the cash flows of the entity, and that their opinion has been formed on the basis of a sound system of risk management and internal control which is operating effectively.

Quarterly Report Disclosure – 30 September 2023

Loyal Lithium Limited (ASX: LLI) provides the following disclosure required by ASX Listing Rule 5.3.4 regarding a comparison of its actual expenditure to date since re-listing on 2 August 2023 against the 'Use of Funds' statement in its Re-compliance Prospectus dated 5 June 2023 (Section 3.9) and Supplementary Prospectus dated 27 July 2023 (Section 3.7) ("Prospectus").

Use of Funds Description	Use of Funds (Sec 3.7 of the Supplementary Prospectus)	Proposed Use of Funds Year 1	Use of Funds Sep 2023 Qtr	Variance Year 1	Notes
Existing cash reserves	\$4,891,648				
Funds raised from the Public Offer	\$1,500,000		\$1,500,000		
Share Placements & Exercise of Options ²			\$6,729,335		
Total	\$6,391,648		\$8,229,335		
Allocation of funds					
Expenditure on Initial Lithium Projects ^{1 6}	\$1,004,999	1,004,999	\$717,755	(\$287,244)	Under Budget ⁶
Expenditure on the Hidden Lake Project ¹	\$1,880,952	1,447,352	\$657,968	(\$789,384)	Under Budget
Payment of environmental bond	\$140,588	\$140,588	\$0	(\$140,588)	Under Budget
Expenses of the Public Offer (net of recoverable GST) ⁴	\$694,410	\$694,410	\$547,706	(\$146,704)	Under Budget ⁴
Acquisition cash payments ⁵	\$38,500	\$38,500	\$39,708	\$1,208	Over Budget ⁵
Additional project evaluation/acquisitions ⁷	\$250,000	\$125,000	\$60,000	(\$65,000)	Under Budget
Working capital ³	\$2,132,199	\$1,500,000	\$399,463	(\$1,100,537)	Under Budget
TOTAL	\$6,141,648	\$4,950,849	\$2,422,599		

1 Please see Section 3.8 of the Prospectus for details on proposed exploration programs for the first 2 years Post-Listing (including the allocation of costs for each Lithium Project) and the Independent Geologist's Reports in Annexure A. Includes exploration activities on Australian Tenements, not included in the Prospectus.

2 Share Placement and Exercise of Options post the re-compliance.

3 Includes expenditure on non lithium projects

4 Includes costs associated with re-compliance and further capital raises since re listing.

5 Difference is regarding Forex differences

6 Expenditure on the Scotty Lithium Project exceeded the Proposed Exploration Costs detailed in the Prospectus. Additional costs of ~A\$176k payable to Bureau of Land Management for the Notice of Intent to Holding Mining Claims and Payment 2023-2024 Annual Maintenance Fees.

7 Regarding Hidden Lake acquisition