

STRATEGICALLY PLACED TO GROW IN NEWFOUNDLAND

NEWFOUNDLAND



CORPORATE PRESENTATION

November 2023



ASX: MZZ
OTCQB: MZZMF

DISCLAIMER



ASX: MZZ | OTCQB: MZZMF

Disclaimer and Forward-Looking Statements

This presentation is not a prospectus nor an offer of securities for subscription or sale in any jurisdiction nor a securities recommendation. The information in this presentation is an overview and does not contain all information necessary for investment decisions. In making investment decisions, investors should rely on their own examination of Matador Mining Limited (Matador or the Company) and consult with their own legal, tax, business and/or financial advisers in connection with any acquisition of securities or interest in the Company. The information contained in this presentation has been prepared in good faith by the Company. However, no representation or warranty, express or implied, is made as to the completeness or adequacy of any statements, estimates, opinions or other information contained in this presentation. To the maximum extent permitted by law, the Company, its directors, officers, employees and agents disclaim liability for any loss or damage which may be suffered by any person through the use of, or reliance on, anything contained in or omitted from this presentation. Certain information in this presentation refers to the intentions of the Company, but these are not intended to be forecasts, forward looking statements, or statements about future matters for the purposes of the Corporations Act 2001 (Cth) or any other applicable law. The occurrence of events in the future are subject to risks, uncertainties and other factors that may alter the Company's actual results, performance or achievements to differ from those referred to in this presentation to occur as contemplated. The presentation contains only a synopsis of more detailed information available in relation to the matters described in this document and accordingly no reliance may be placed for any purpose whatsoever on the sufficiency or completeness of such information and to do so could potentially expose you to a significant risk of losing any of the property invested by you or incurring by you of additional liability. Recipients of this presentation should conduct their own investigation, evaluation and analysis of the business, data and property described in this presentation. In particular, any estimates or projections or opinions contained herein necessarily involve significant elements of subjective judgment, analysis and assumptions and you should satisfy yourself in relation to such matters.

Mineral Resources

The information in this Presentation that relates to the Mineral Resource estimate for the Cape Ray Gold Project was announced on 30 May 2023. Matador confirms that it is not aware of any new information or data that materially affects the information included in the announcement of 30 May 2023 and that all material assumptions and technical parameters underpinning the Mineral Resource estimate in that announcement continue to apply and have not materially changed.

Mineral Resources are reported using a cut-off grade of 0.30 g/t gold for open pit and 2.00 g/t gold for underground. Assumptions for the open pit and underground grade cut-offs consider the following: a gold price of USD 1750 per troy ounce gold, selling costs of USD 5 per troy ounce gold, exchange rate of 1.3 USD:CAD, open pit mining costs of CAD 3 per tonne, underground mining costs of CAD 92.47 per tonne, processing costs of CAD 20 per tonne, G&A costs of CAD 5 per tonne processed, gold recovery of 96%, and royalty of 3% for Zone 4, 41 and Isle aux Morts and royalty of 1% for Window Glass Hill, Angus, PW Zone and Zone 51. The open pit Mineral Resources are constrained using optimized pit shells that have been generated using Lerchs Grossman algorithm with parameters outlined above, using a maximum of 50 degree pit slopes. The underground Mineral Resources are constrained using a 2.00 g/t gold grade shell below the optimized pit based on the assumptions summarised above.

The Mineral Resource Estimate for the Cape Ray Gold Project has been prepared by Trevor Rabb, P.Geo. (EGBC #39599 and PEGNL #11155) who is a Competent Person as defined by JORC 2012. EGBC (formerly APEGBC) and PEGNL (APEGNL) are Recognised Professional Organisations accepted for the purpose of reporting in accordance with appendix 5A of the Australian Securities Exchange Listing Rules. Mineral Resources for the Cape Ray Gold Project have an effective date of 22 February 2023.

Exploration Results

The information in this Presentation that relates to exploration results reported through Company ASX announcements that can be found on the Company's website: www.matadormining.com.au.

Matador confirms that it is not aware of any new information or data that materially affects the information included in those announcements.

MATADOR OVERVIEW

ROBUST SHAREHOLDER REGISTER TO SUPPORT LONG-TERM GROWTH STRATEGY

CAPITAL MARKETS

MARKETS : TICKERS

MZZ ASX | **MZZMF** OTCQB

MARKET CAPITALISATION⁽¹⁾

\$18 million

SHARES OUTSTANDING⁽¹⁾

315 million

DAILY AVG VOLUMES⁽²⁾

0.17 million shares

OPTIONS⁽¹⁾

8.8 million

HIGH-GRADE MINERAL RESOURCE⁽³⁾

INDICATED RESOURCES

6.2 Mt @ **2.25** g/t Au → **450** koz Au

INFERRED RESOURCES

3.5 Mt @ **1.4** g/t Au → **160** koz Au

INDICATED & INFERRED RESOURCES

9.7 Mt @ **1.96** g/t Au → **610** koz Au

FINANCIAL OVERVIEW

CASH BALANCE ⁽⁴⁾

C\$2.8 million / **A\$3.2** million

CAPITAL RAISING ⁽⁵⁾

C\$5.1 million / **A\$5.8** million

DEBT ⁽⁴⁾

nil

OWNERSHIP PROFILE⁽⁶⁾



1. As at 3 Oct 2023
2. 90-Day Avg Volumes as at 3 Oct 2023
3. ASX Announcement 30 May 2023
4. As at 30 Sep 2023
5. ASX Announcement 25 Oct 2023 – some proceeds are subject to shareholder approval
6. Excludes ownership via latest capital raising

OVERSUBSCRIBED FINANCING



ASX: MZZ | OTCQB: MZZMF

STRONG SUPPORT FROM EXISTING SHAREHOLDERS + ADDITION OF SEVERAL GLOBAL FUNDS

TOTAL GROSS PROCEEDS

~A\$5.8 million

AVERAGE PRICE

A\$0.050 per share

USE OF PROCEEDS

Exploration: Resource corridor & Greenfields
Corporate: General working capital

CHARITY FLOW THROUGH

~A\$3.8 million

PRICE: A\$0.056 per share

Price relative to Oct 20/23 close: **24.4% premium**

Price relative to Deal Price: **40% premium**

Within placement capacity

TRADITIONAL FLOW THROUGH

~A\$1.0 million

PRICE: A\$0.042 per share

Price relative to Oct 20/23 close: **6.7% discount**

Price relative to Deal Price: **5% premium**

Approximately A\$0.58m subject to shareholder approval ⁽¹⁾

“HARD DOLLAR”

~A\$1.0 million

PRICE: A\$0.040 per share

Price relative to Oct 20/23 close: **11.1% discount**

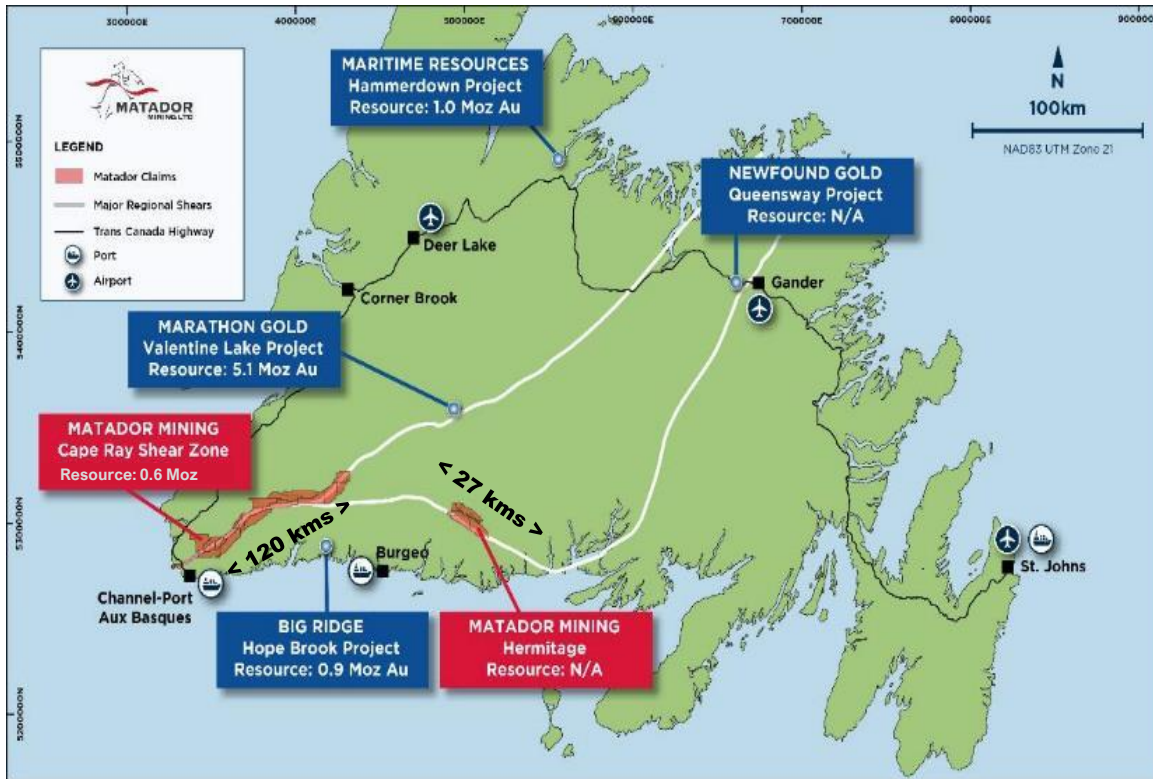
Price relative to 5D-VWAP: **14.3% discount**

Subject to shareholder approval ⁽¹⁾

1. Subject to shareholder approval via future shareholder meeting

MATADOR VALUE PROPOSITION

INCREDIBLE KEY ATTRIBUTES UNDERPINS THE MATADOR VALUE PROPOSITION



SIGNIFICANT LAND PACKAGE

On a proven multi-million-ounce gold structure

HIGH-GRADE, SHALLOW MINERAL RESOURCE

One of only a few explorers with a gold resource in Newfoundland

EMERGING, TOP-TIER JURISDICTION

Newfoundland ranked 4th for mining attractiveness by the Fraser's Institute

B2GOLD IS A STRATEGIC INVESTOR

Highly reputable & successful gold miner, builder and explorer

HIGHLY EXPERIENCED AND REPUTABLE TEAM

With a track record of making multi-million-ounce gold discoveries

SYSTEMATIC APPROACH TO EXPLORATION

To maximise return on investments, create long-term shareholder value

BOARD & MANAGEMENT



ASX: MZZ | OTCQB: MZZMF

SEASONED MINING & EXPLORATION EXPERIENCE WITH PROVEN TRACK RECORD OF SUCCESS



Sam Pazuki P. ENG, M.FIN

MANAGING DIRECTOR & CHIEF EXECUTIVE OFFICER

- Toronto-based executive with 20+ years of experience in the mining industry in senior leadership positions in engineering, business development, strategy and investor relations
- Previously served as Senior VP, Strategy & Corporate Development at OceanaGold and in various roles at EY Advisory Services and Enbridge



Crispin Pike B.SC, M.SC

VP EXPLORATION

- Newfoundland-based geologist with 17+ years of international experience in structural geology and geophysics applied to mineral exploration
- Prior to joining Matador, Crispin worked for the Newfoundland & Labrador Geological Survey for over six years.
- His experience also includes nine years as a structural geologist with Vale in North and South America



Carol Marinkovich

NON-EXECUTIVE DIRECTOR & COMPANY SECRETARY

- Perth-based executive with 25+ years experience in the mining industry
- Extensive experience in Corporate Governance Practices as a Company Secretary within Australia and Internationally



Justin Osborne BSc(Hons) Geology, FAusIMM, FSEG, MAICD

NON-EXECUTIVE CHAIR

- Perth-based geologist and executive with 30+ years' experience in the mining industry
- Previously served as Executive Director at Gold Road Resources
- Currently serves as Non-Executive Director of IGO, Hamelin Gold and Astral Resources



Kerry Sparkes M.SC., P. GEO

NON-EXECUTIVE DIRECTOR

- Canadian-based geologist and executive with 30+ years track record of significant mineral resource discoveries
- Founder and director of Orla Mining
- Previously served as VP Geology at Franco Nevada, VP Exploration at Rainy River Resources and Messina Minerals, Senior Geologist at Voisey's Bay Nickel Co., Exploration Manager of Archean Resources
- Currently serves as a Director of Aurion Resources and Prime Mining



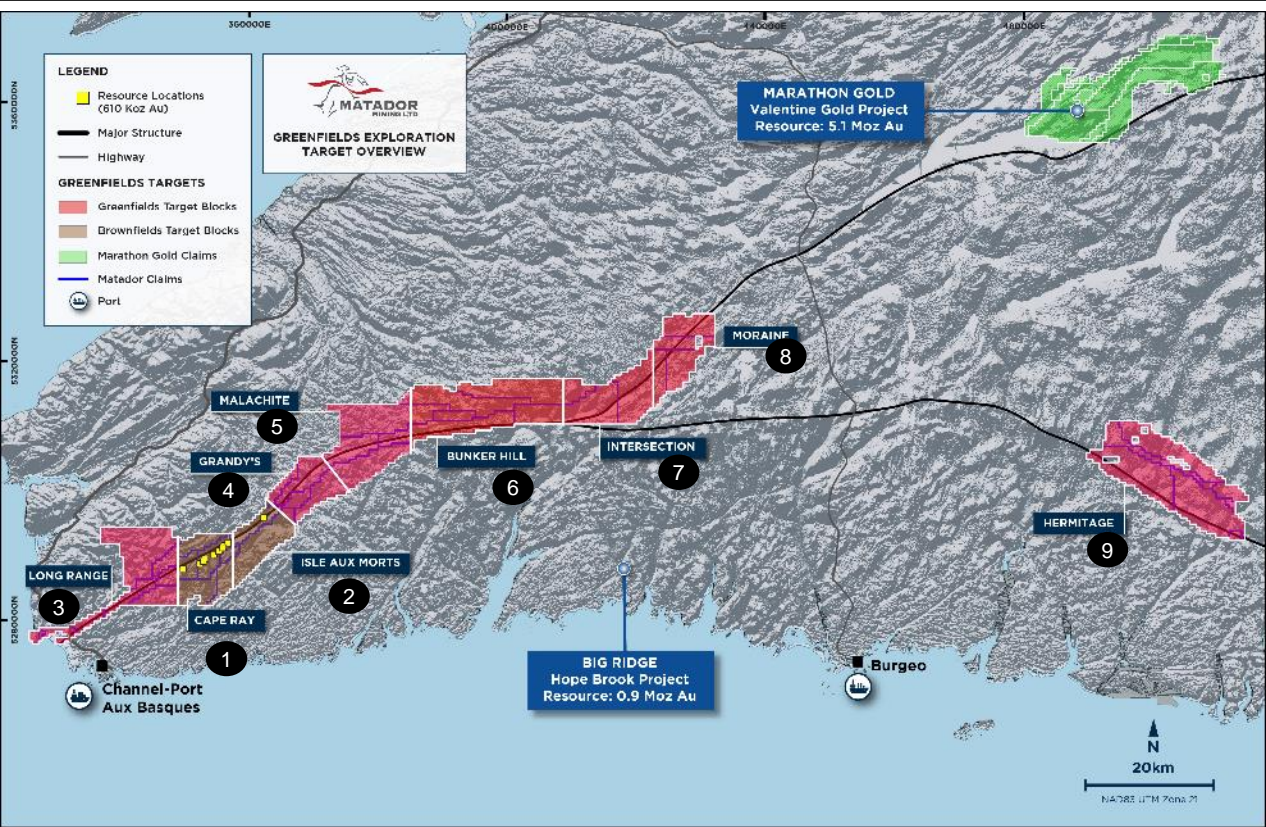
Dr Nicole Adshead-Bell Ph.D., Structural & Economic Geology

NON-EXECUTIVE DIRECTOR

- Vancouver-based executive with 27+ years combined technical, corporate, institutional and investment banking experience in the mining industry
- Currently serves as President of Cupel Advisory Corp and Non-Executive Director of Altius Minerals, Dundee Precious Metals and Hot Chili

LOOKING FOR MULTI-MILLION-OUNCE DEPOSITS

SEVERAL HIGHLY PROSPECTIVE OPPORTUNITIES WITHIN THE SIGNIFICANT LAND PACKAGE



750 SQUARE KILOMETRES OF POTENTIAL

MATADOR OPPORTUNITIES <i>(no particular order)</i>			
	Target	Size <i>(strike x width)</i>	Status
BROWNFIELDS			
1.	Cape Ray	10km x 4km	M&I&I Resource Drill ready targets
2.	Isle Aux Morts	8.5km x 4km	M&I&I Resource Drill ready targets
GREENFIELDS			
3.	Long Range	21km x 2km	Early & intermediate stage 5 total diamond drill holes, limited prospecting
4.	Grandy's	10km x 4km	Early stage 5 total drill holes completed
5.	Malachite	15km x 4km	Early & Intermediate stage 13 total drill holes completed
6.	Bunker Hill	24km x 6km	Early stage No drilling, very little exploration
7.	Intersection	15km x 6km	Early stage No drilling, no exploration
8.	Moraine	12.5km x 4km	Early stage No drilling, no exploration
9.	Hermitage	27km x 9km	Early stage No drilling, very little exploration

B2GOLD – STRATEGIC PARTNER



ASX: MZZ | OTCQB: MZZMF

B2GOLD MADE A STRATEGIC INVESTMENT INTO MATADOR IN NOVEMBER 2022

FIRST EVER INVESTMENT IN CANADA

FIRST EVER STRATEGIC PLACEMENT

B2Gold has a long, rich history and track record of exploring, acquiring, building and operating mines

STRONG BALANCE SHEET⁽¹⁾

Cash: US\$652 million (US\$1.45 billion total liquidity)

SIGNIFICANT PRODUCTION

Annual gold production⁽²⁾: 1,040,000 ounces

Three operating mines⁽²⁾: Fekola (595koz), Masbate (180koz) and Otjikoto (200koz)

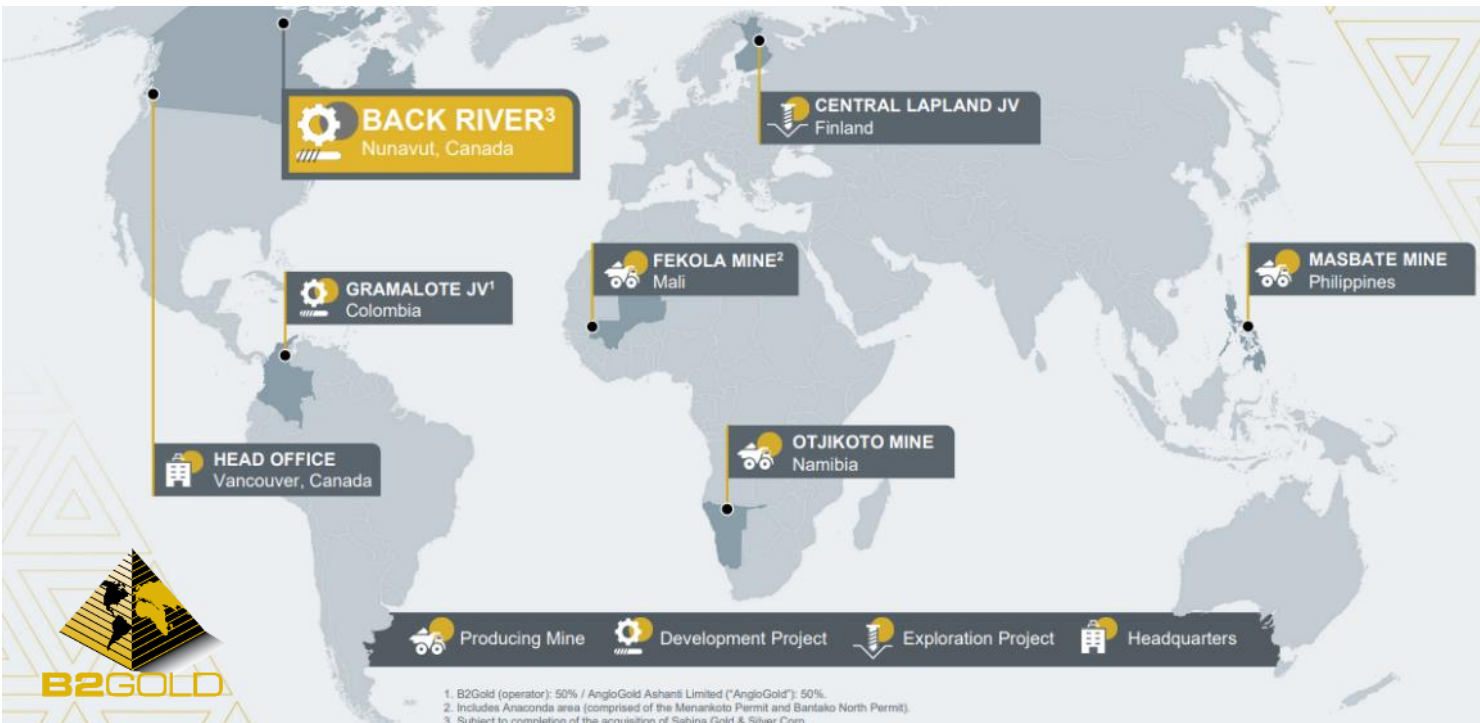
HIGHLY EXPERIENCED & CAPABLE TEAM

Mine builders: In-house development team

Global explorers: Track record of organic growth through Greenfields and brownfields exploration

CORPORATE CULTURE

ESG: Operating to the highest of standards financially, environmentally and socially



1. Source: B2Gold Financial Quarterly Reports
2. Source: B2Gold – midpoint of 2023 production guidance

BRAIN POWER AT CAPE RAY

Matador exploration team on brownfield and greenfield sites with B2Gold exploration leadership team: Andy Brown (VP Exploration), Claudia Gordillo (Chief Geologist) and Cam Bartsch (Chief Structural Geologist) as well as Brett Davis, a globally recognized structural geology expert



VP Exploration Crispin Pike walking through Greenfields opportunity with B2Gold SVP Exploration Vic King



HYBRID AUSTRALIAN-CANADIAN BEST-IN-CLASS EXPLORATION TO DELIVER INCREASED ROI



PROSPECTING, MAPPING & SAMPLING

BASAL TILL & BOTTOM OF HOLE SAMPLING

DIAMOND DRILLING

DATA REVIEW & ANALYSIS

Comprehensive review significant data & reports for target generation

BEGINNINGS OF MAJOR GLOBAL GOLD DISCOVERIES

BOTTOM OF HOLE / BASAL TILL SAMPLING HAS LED TO MAJOR GLOBAL DISCOVERIES

Project	Terrane	Exploration Method	Initial Results	SCALE
Ikkari	5 – 10m of glacial till Low-lying swamp areas	RC drilling Basal till	Intersected single sample: 0.2ppm Au	4.3 Moz +
Hemi	15-30m of colluvial cover with no surface geochemical signature	Aircore drilling Bottom-of-Hole (BOH)	Intersected 2 g/t Au in regolith	10 Moz
Gruyere	Permian glacial cover, 2-10m deep with no surface geochemical signature	RAB drilling BOH	Intersected 10-100ppb (0.01 – 0.1 g/t) anomaly approximately 800m in strike. Followed up with two lines of RC drilling which intersected mineralisation in bedrock immediately below the 10ppb anomaly	8 – 10 Moz
Tropicana	Very low-level 10ppb (0.1 g/t) soil geochemical anomaly in sand dune	Aircore drilling BOH	Intersected low grade 0.2 – 2 g/t in regolith	8 – 10 Moz
Sunrise Dam	Salt lake in Laverton District	Aircore drilling BOH		15 Moz
Invincible	Low level 15m playa cover on salt lake	Aircore & RC Drilling	Aircore intersected 100ppb (0.1 g/t) Au anomaly RC drilling	3 – 5 Moz
Matador	3 to 20m of glacial till	“Wiki” & RC drilling BOH/Basal Till	Anomalous gold 100ppb to multigram across 60-kms of strike	0.61 Moz And growing?

REFINED EXPLORATION STRATEGY

DESIGNED TO ALLOW EFFECTIVE EXPLORATION ON A LARGE LAND PACKAGE



ADVANCED STAGE

Diamond drilling for new resource discovery

Cape Ray | Isle aux Morts

BALANCED EXPLORATION PROGRAM

Mix of Brownfields and Greenfields exploration

Utilising the Company's best-in-class approach to exploration



INTERMEDIATE STAGE

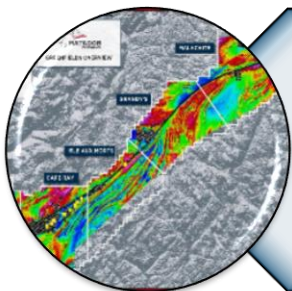
Bottom of hole / basal till sampling
Advanced geophysics (e.g. IP and EM)

Malachite Breakout | Long Range

BUILDING A PIPELINE OF OPPORTUNITIES

Effective approach to test the extensive land package

Rapidly advance targets to drill-ready status.



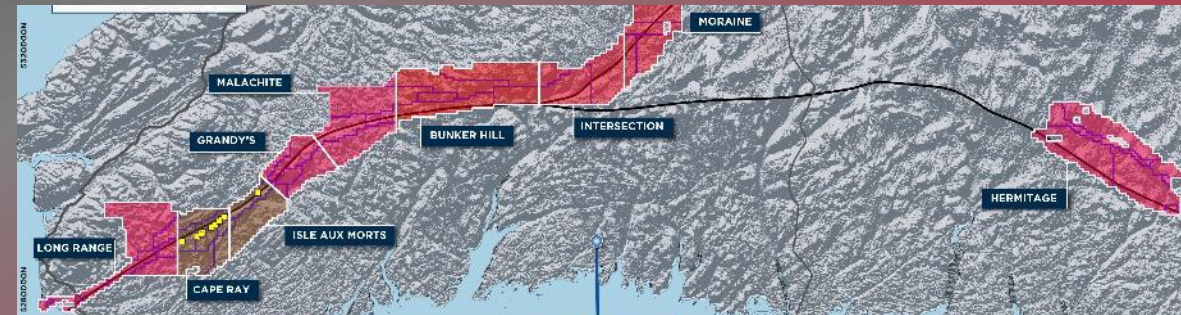
EARLY STAGE

Prospecting, sampling and mapping
Geophysics (e.g. gravity) and geochemistry

Hermitage | Bunker Hill | Intersection | Malachite | Long Range | Grandy's | Moraine

RETURN ON INVESTMENT

Ensure capital is allocated to exploration activities with potential to generate the highest risk-adjusted returns



RESOURCE CORRIDOR

BROWNFIELD EXPLORATION



ASX: MZZ | OTCQB: MZZMF

ONE OF ONLY A FEW COMPANIES WITH A DEFINED GOLD RESOURCE IN NEWFOUNDLAND

MINERAL RESOURCE UPDATED 2023

Higher quality resource incorporating all drill data to-date within resource corridor, and economically constrained within pit shells

MINERAL RESOURCE UPDATE HIGHLIGHTS

Positive indicators from updated resource estimate

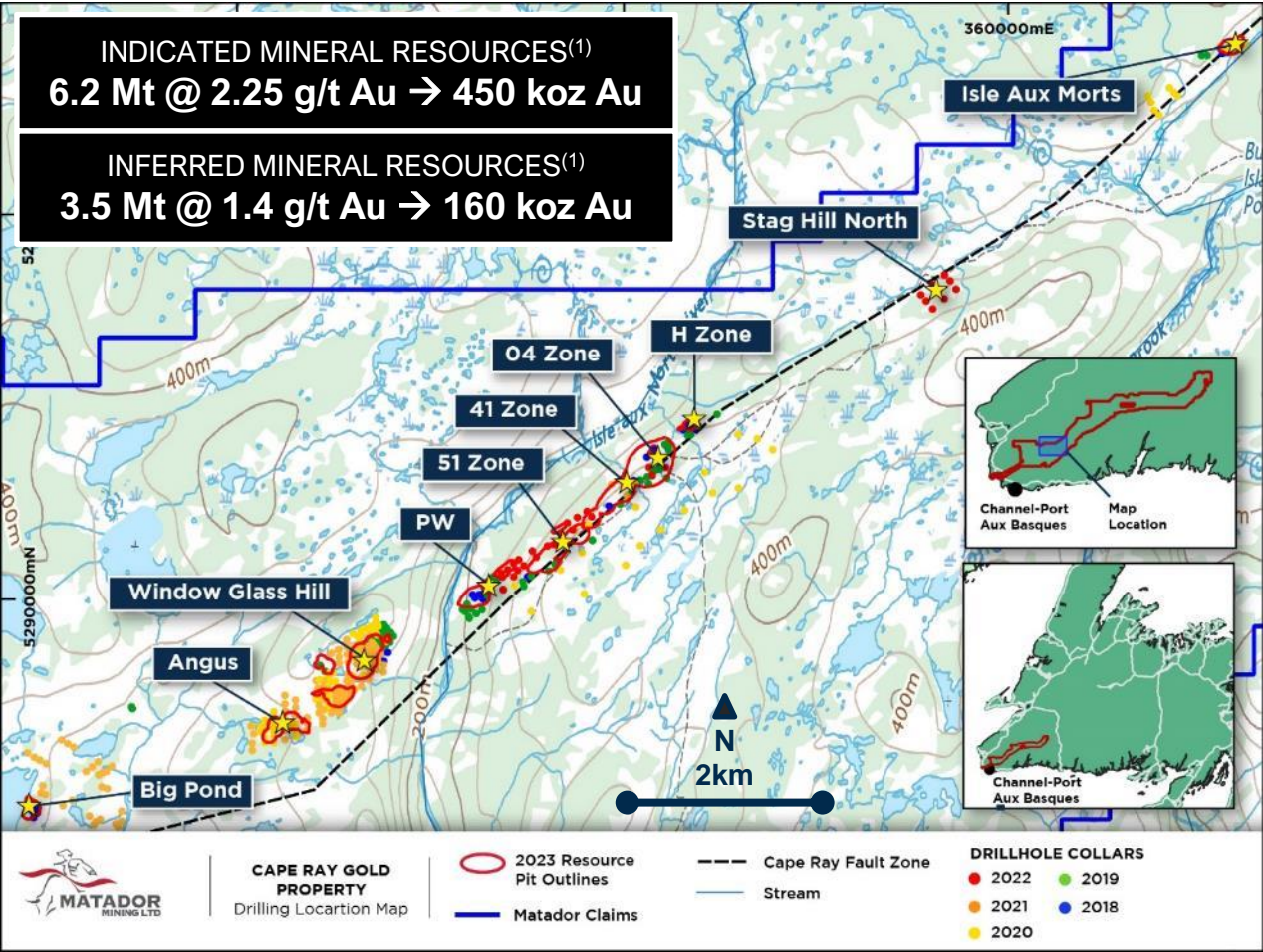
- 28% increase in Indicated Resources
- Minimal change to overall grade (1.96 g/t vs 2.00 g/t) despite decrease in cut-off grade

HIGH-GRADE AND SHALLOW

Approximately 96% of defined Resources are deposited less than 150 metres below surface

GROWTH POTENTIAL

Identified several areas of high interest for future drilling

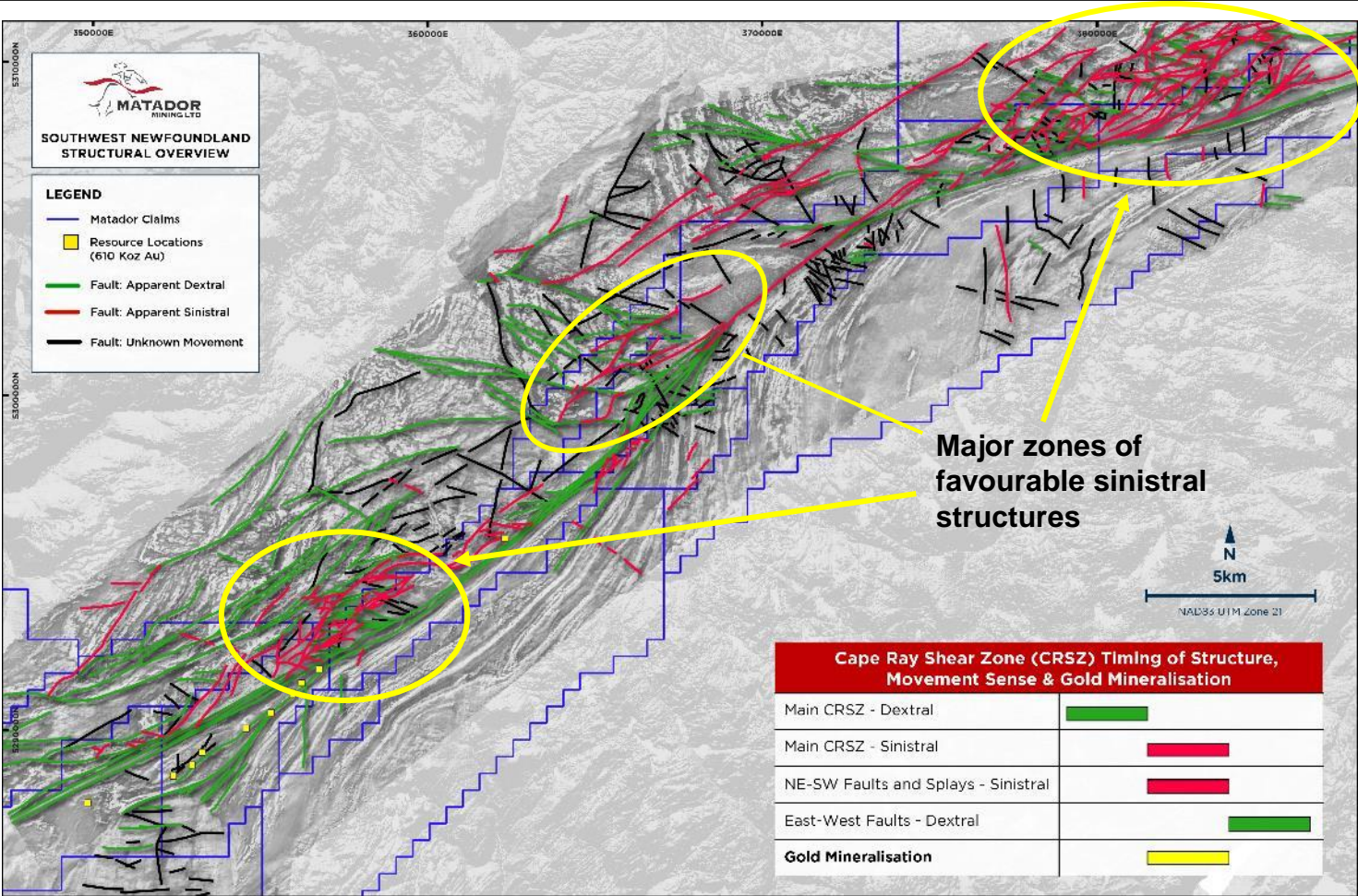


CAPE RAY SHEAR ZONE KINEMATIC FRAMEWORK



ASX: MZZ | OTCQB: MZZMF

NEW REGIONAL KINEMATIC FRAMEWORK PRESENTS SIGNIFICANT CHANGE TO PREVIOUS THINKING



COMPREHENSIVE STRUCTURAL REVIEW

Completed by world-renowned structural geologist

Review of drill core, geochemistry, geophysics

VARIABLE CONTRIBUTIONS TO GOLD FLUID TRANSPORT

Metal inventory hypothesised as sourced from intrusion-related fluids

Based on vein textures, geochemistry and mineralogy

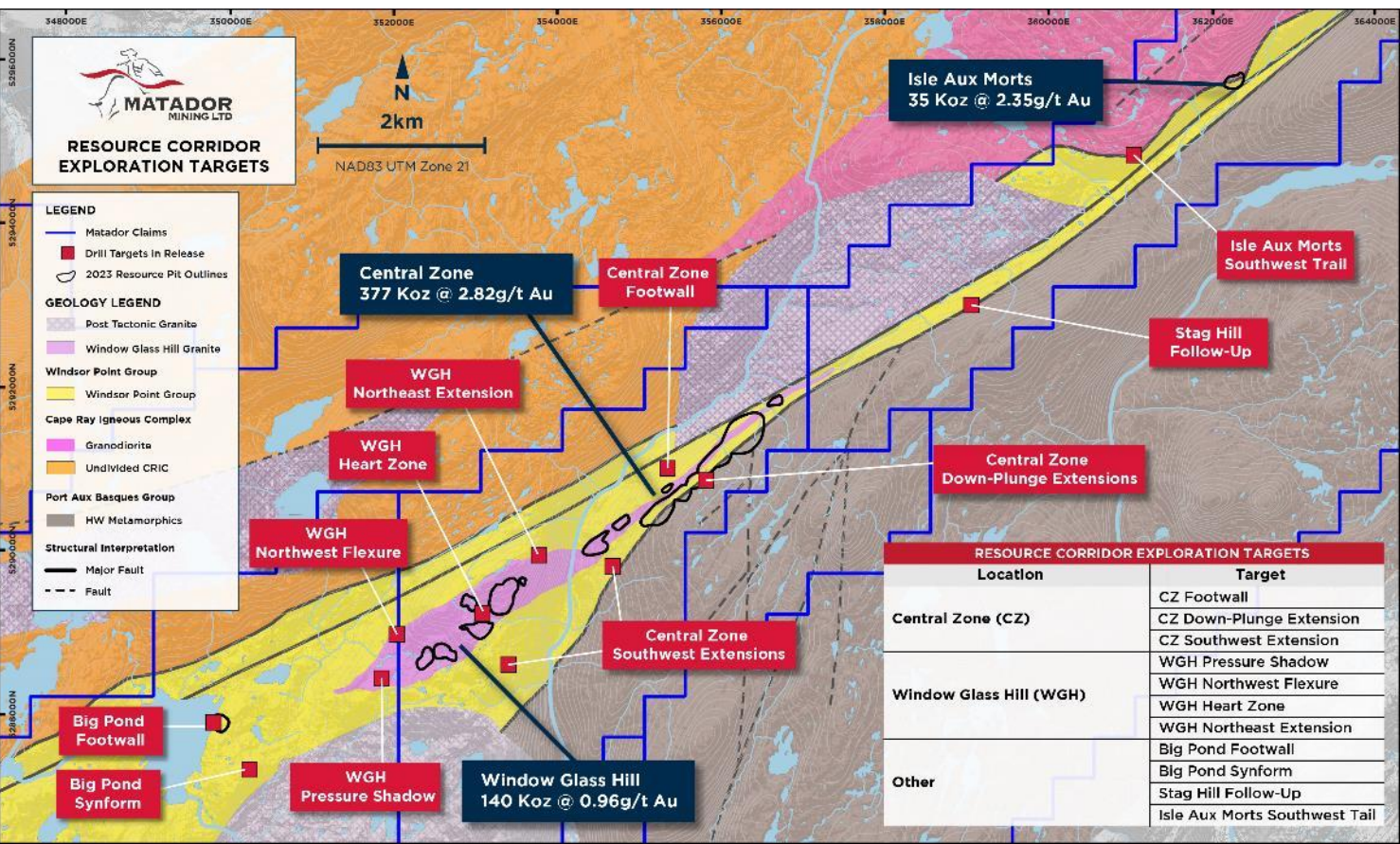
MAJOR CHANGE TO KINEMATIC FRAMEWORK

Gold likely associated with Sinistral event, not Dextral

Host mineralisation believed now to be epizonal-mesozonal orogenic and/or intrusion-related

ADVANCED STAGE TARGETS TARGETING MOZ

NEARLY A DOZEN NEW, UNTESTED BROWNFIELDS TARGETS IDENTIFIED FOR DIAMOND DRILLING



CENTRAL ZONE

Several new targets near high-grade resources

Test potential of the footwall for structural repetition

Extension potential along strike and down-plunge

WINDOW GLASS HILL

Several targets based on new geological thinking

Drilling of geophysical anomalies and targeting new high-grade ore shoots

ISLE AUX MORTS BLOCK

Limited exploration presenting new opportunities

Follow-up drilling of gold mineralisation at Stag Hill

Earlier-stage work to identify new targets

BIG POND

Structural and geochemical targets

Extension potential along strike, down-plunge, and footwall



MALACHITE

HIGH PRIORITY TARGET WITH LIMITED EXPLORATION WORK TO DATE YIELDING POSITIVE RESULTS



Confirmed gold in basement requiring follow-up
Wide alteration zones confirm mineral system

Targeting dozens of second and third order structures

Testing of targets via BOH a major enabler

Several targets identified through gold-in-till sampling

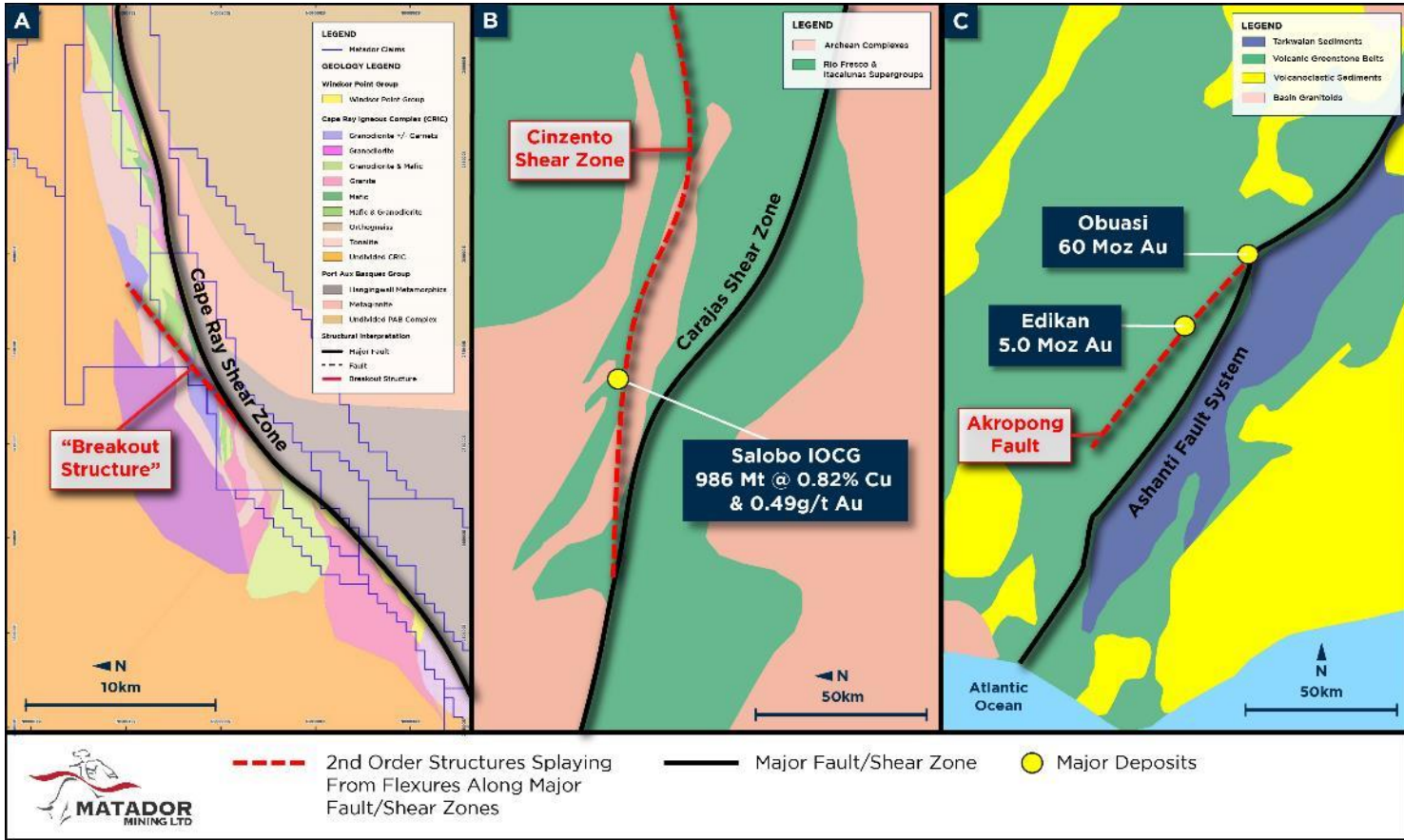
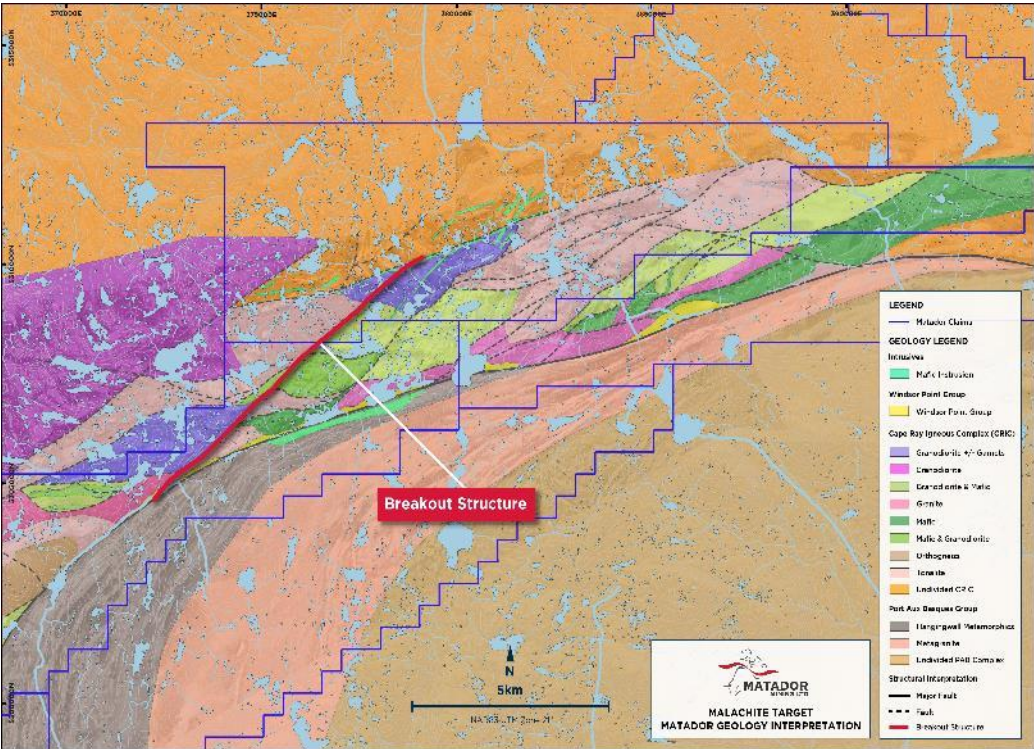
Some of the highest tenor results in Newfoundland

Discovered high-grade samples

Supporting target generation

MALACHITE BREAKOUT – A WORLD CLASS ANALOG

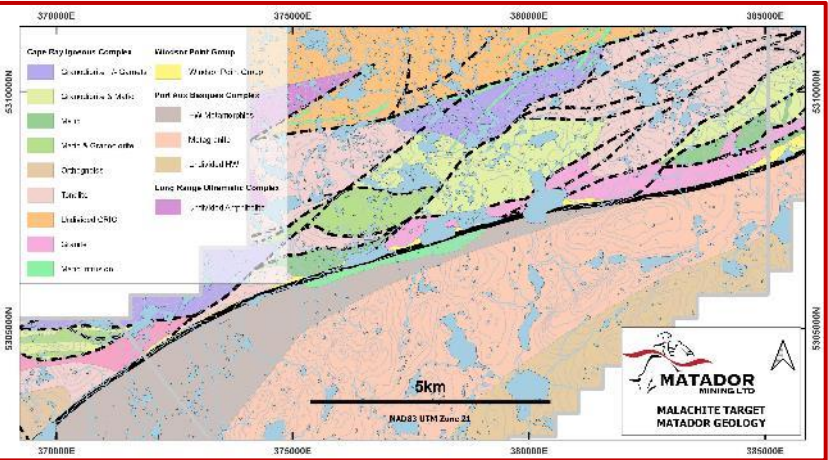
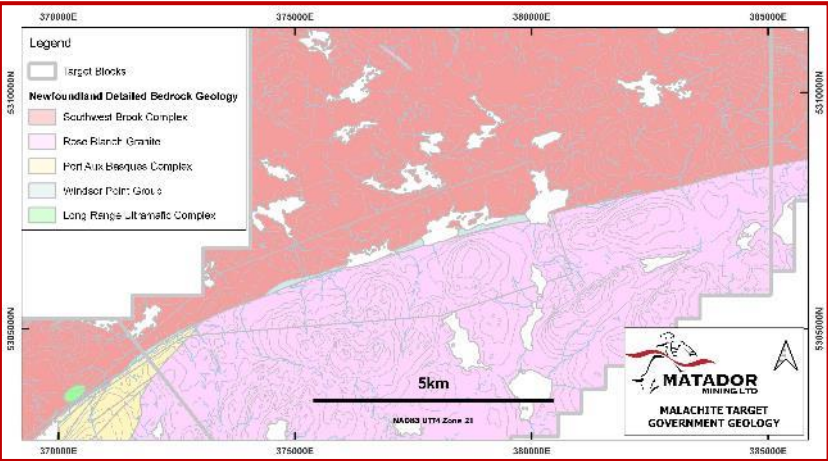
MALACHITE BREAKOUT STRUCTURE ANALOGOUS TO MAJOR GLOBAL GOLD DEPOSITS



MALACHITE PROSPECTIVITY

MALACHITE IS A VAST, LARGELY UNDEREXPLORED TARGET AREA WITH 15-KMS OF STRIKE, 4-KMS WIDE

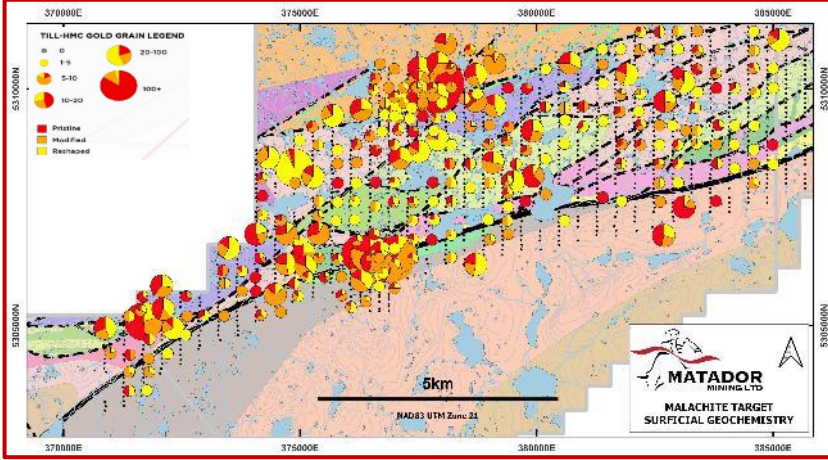
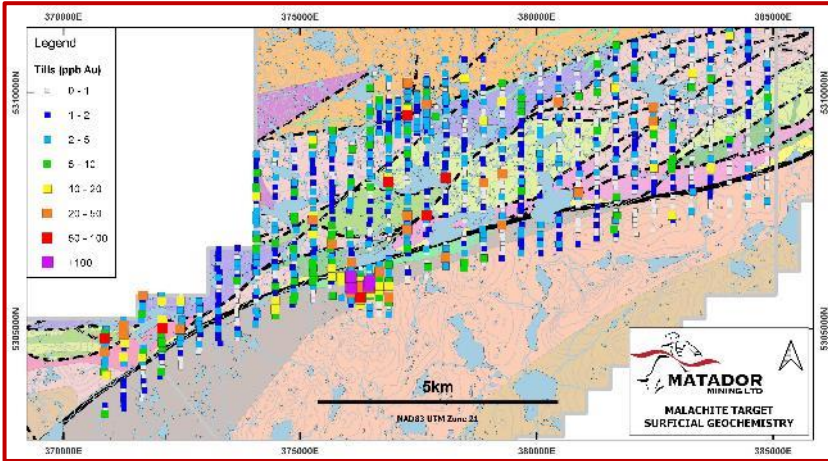
MAPPING



PROSPECTING⁽¹⁾



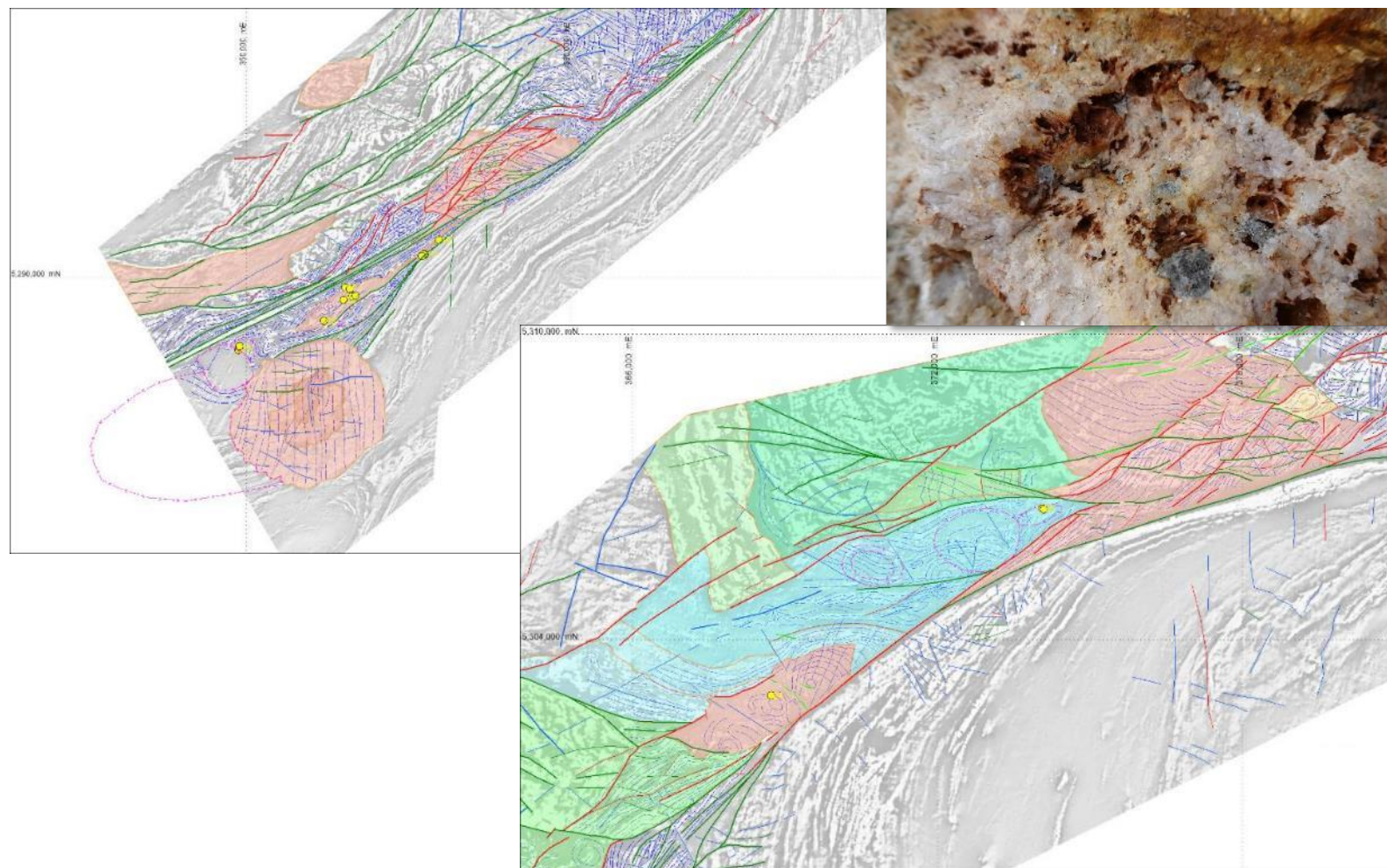
GEOCHEMISTRY⁽²⁾



1. See ASX release dated 12 Dec 2022
2. Figure modified from ASX release dated 8 Jun 2022

POTENTIAL FOR SUBSURFACE PLUTONS

SEVERAL GEOMETRIC ANOMALIES SUGGESTIVE OF BURIED PLUTONS



**EPIZONAL TEXTURES SUGGEST
HIGHER EMPLACEMENT DEPTHS AS
PREVIOUSLY THOUGHT**

**SOME OCCURRENCES WITHIN
EXISTING GOLD ANOMALIES**

**OVOID GEOMETRIES THAT MAY BE
PRODUCTS OF DEFORMATION
INFLUENCED BY SUB-SURFACE
PLUTONS**



HERMITAGE

HERMITAGE OVERVIEW

LARGEST ARSENIC & ANTIMONY ANOMALY IN NEWFOUNDLAND ON UNDEREXPLORED GOLD BELT

SITUATED ON A PROSPECTIVE GOLD BELT

Hermitage Flexure: Structure hosts other major gold discoveries including Newfound Gold's Queensway Project

Extensive land position: Company holds ~27kms of continuous strike

WELL SITUATED GEOLOGICAL SETTING

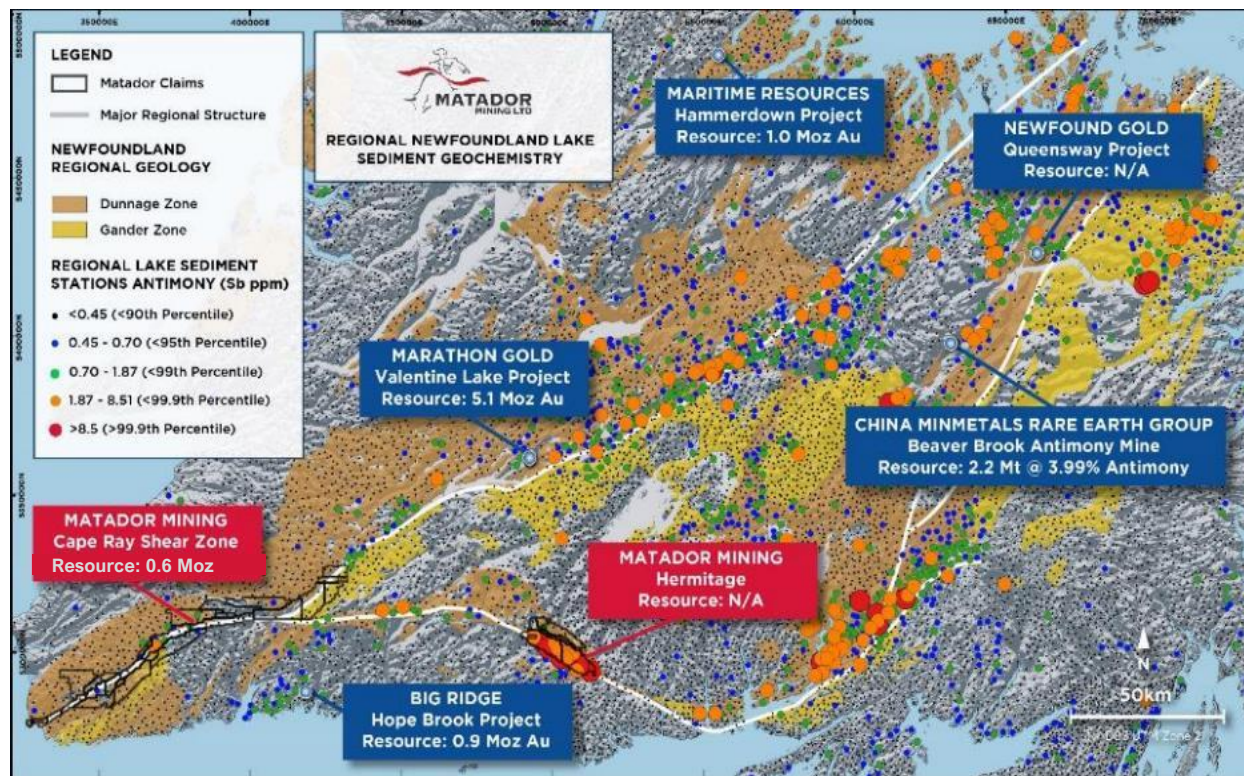
Structurally unique: Orientation vastly different to all other major geological structures in Newfoundland

Major splay: Hermitage flexure is a major regional splay off the CRSZ

REMOTE, VASTLY UNDEREXPLORED AREA

Historic work and data: Previous grassroots base metals work by mining giants: Teck, Falconbridge and Inco

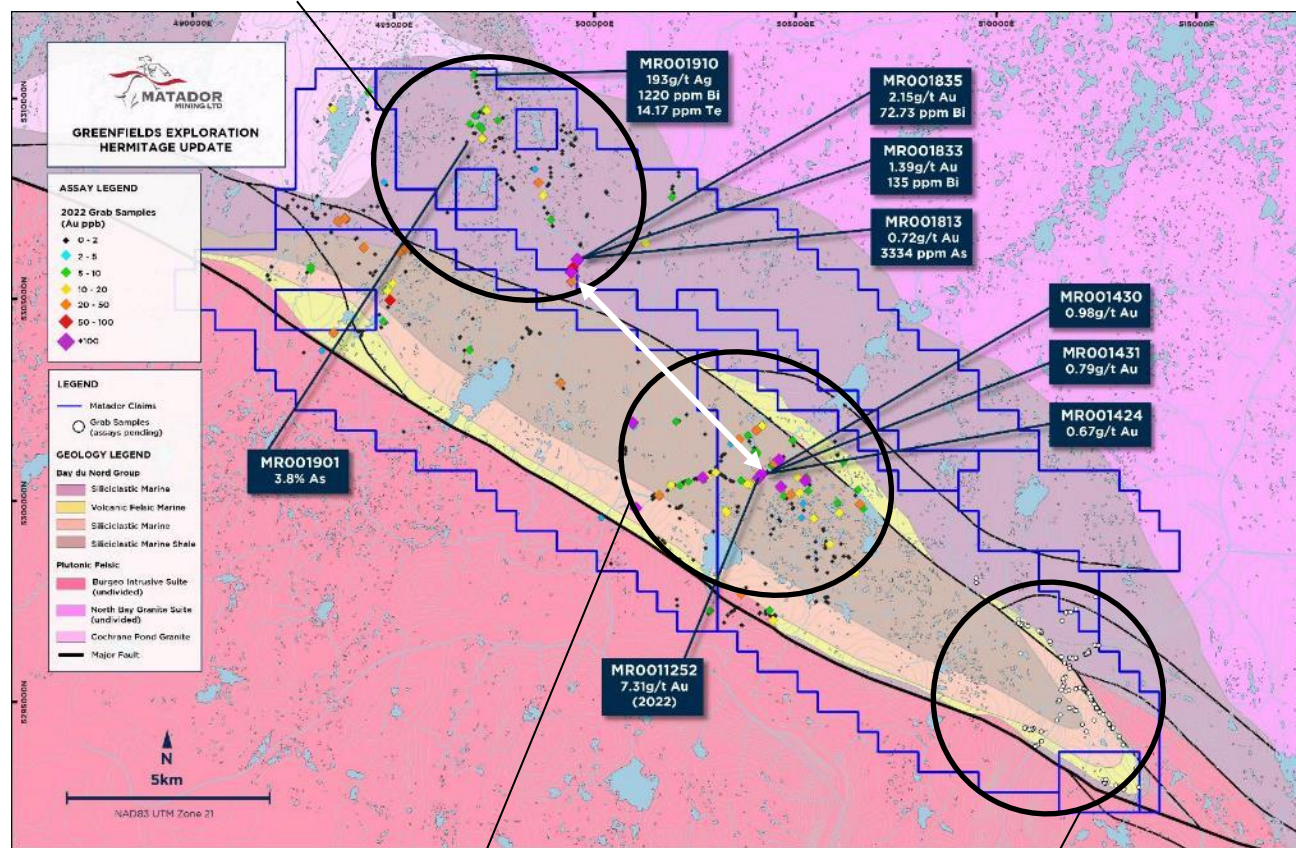
Large anomaly: Location of five out of eight major antimony anomalies



HERMITAGE PROSPECTING⁽¹⁾

2023 EXPLORATION RESULTS CONTINUE TO FAVOUR HERMITAGE AS A HIGH PRIORITY TARGET

2023 prospecting results released



2022 prospecting results

2023 prospecting
assays pending

HIGH-GRADE GOLD SAMPLES

Multigram gold: 7.31 g/t, 2.15 g/t, 2.10 g/t (all outcrops) with significant pathfinders

Scale: Over 17 samples delivered greater than 100 ppb Au over seven kilometres from 2022 discoveries.

SIGNIFICANT PATHFINDERS AKIN TO BENDIGO TERRANE

Pathfinder elements: Results indicate arsenic-gold and antimony-gold associations

Validating large anomaly: Results validate historic Government surveys indicating Hermitage as largest antimony & arsenic anomaly in NL

FAVOURABLE GEOLOGICAL FEATURES

Hydrothermal activity: Discovered series of large outcropping quartz veins and vein arrays in multiple locations

Geological complexity: Recent sampling and mapping identified differing structural setting to 2022 high-grade sample



LONG RANGE

LONG RANGE OVERVIEW

DISCOVERY OF MULTIGRAM GOLD SAMPLES THROUGH PROSPECTING

SIGNIFICANT HISTORIC RESULTS

High-grade samples: Historic, undrilled cluster of high-grade gold in rock chips associated with outcropping sulphide-bearing quartz veins

PROSPECTING GOLD RESULTS

Multigram gold: 4.38 g/t, 3.54 g/t, 2.33 g/t with significant pathfinders

Expanded strike: Multigram gold samples across 8-km strike, still open

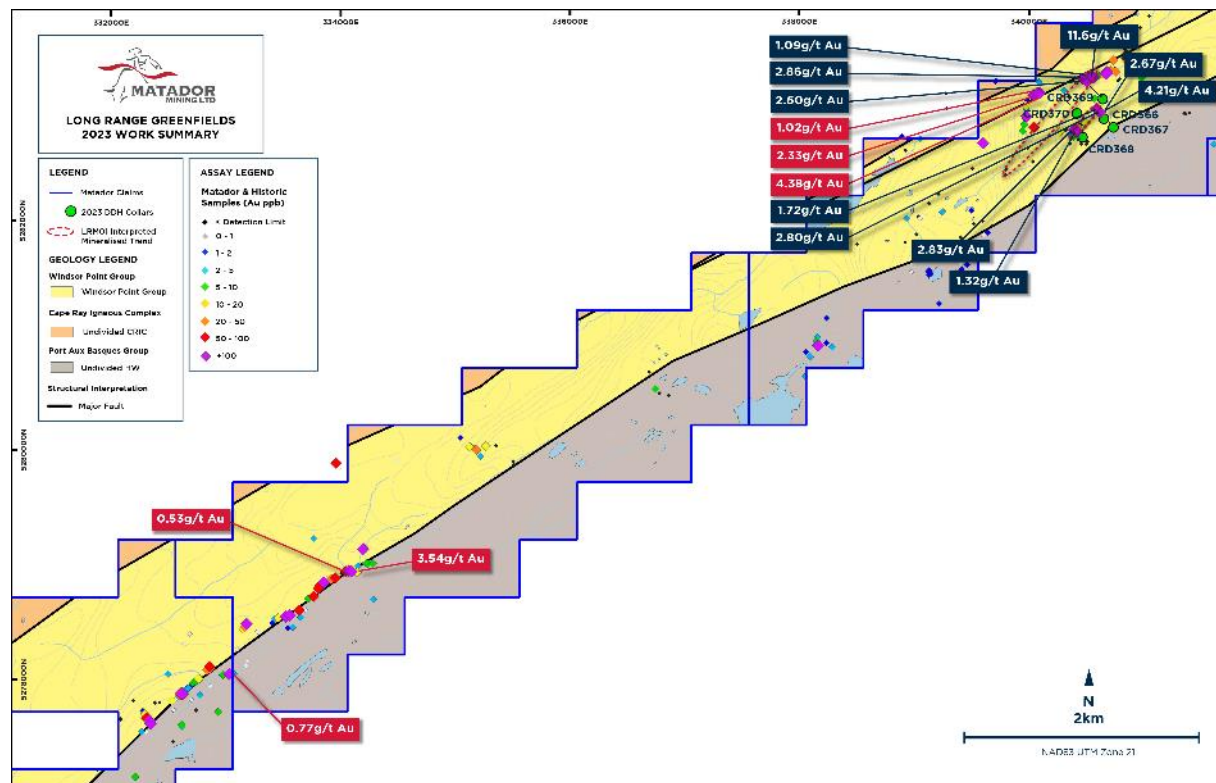
KEY PATHFINDER ELEMENTS

Tellurium significance: Tellurium (Te) values peak at 145 ppm → approx. 10 to 100 times greater than Te values in resource areas

Other key pathfinders: 107 g/t Ag, 215 ppm Bi, 1.38% Cu

DIAMOND DRILLING

Confirmed gold in basement: Five holes drilled near historic samples that included 43 samples with anomalous gold (e.g. 3.4 m @ 0.49 g/t)





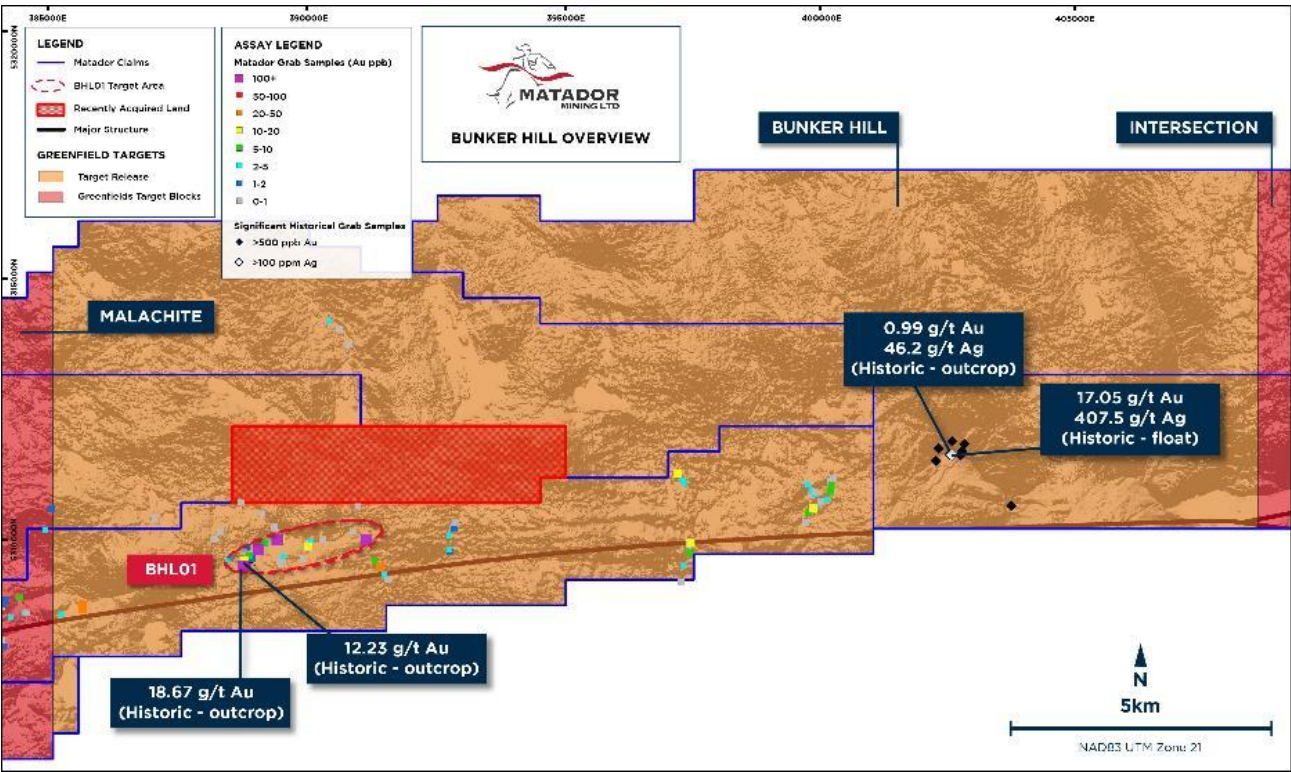
BUNKER HILL

BUNKER HILL TARGET AREA (1)



ASX: MZZ | OTCQB: MZZMF

BUNKER HILL TARGET AREA HAS A STRIKE LENGTH OF 24KM, 60% GREATER THAN THAT OF MALACHITE



MATADOR MULTIGRAM SAMPLE RESULTS

Anomalous gold mineralisation

Float samples: 3.52 g/t, 2.51 g/t, 1.72 g/t & 1.57 g/t

Strike extended

Peak gold assay (3.52 g/t) located 900 metres from historic high-grade outcrop (18.67 g/t)

Significant pathfinder elements

Including silver (27.7 g/t) & copper (0.24%)

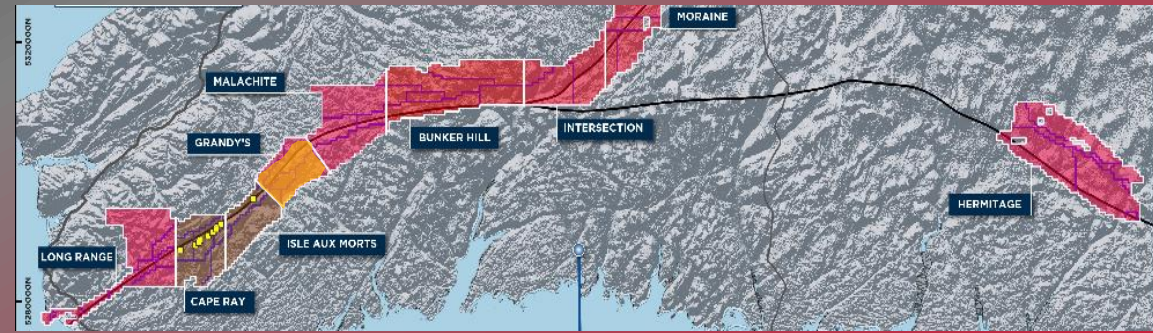
Regional exploration

Prospecting result 15 kilometres away delivering 17.05 g/t Au associated with increased levels of silver and copper

HISTORIC SAMPLES

Commodity	Results
Gold	18.67 g/t, 17.05 g/t
Silver	407.5 g/t, 35.3 g/t, 34.1 g/t
Copper	57%, 1.6%

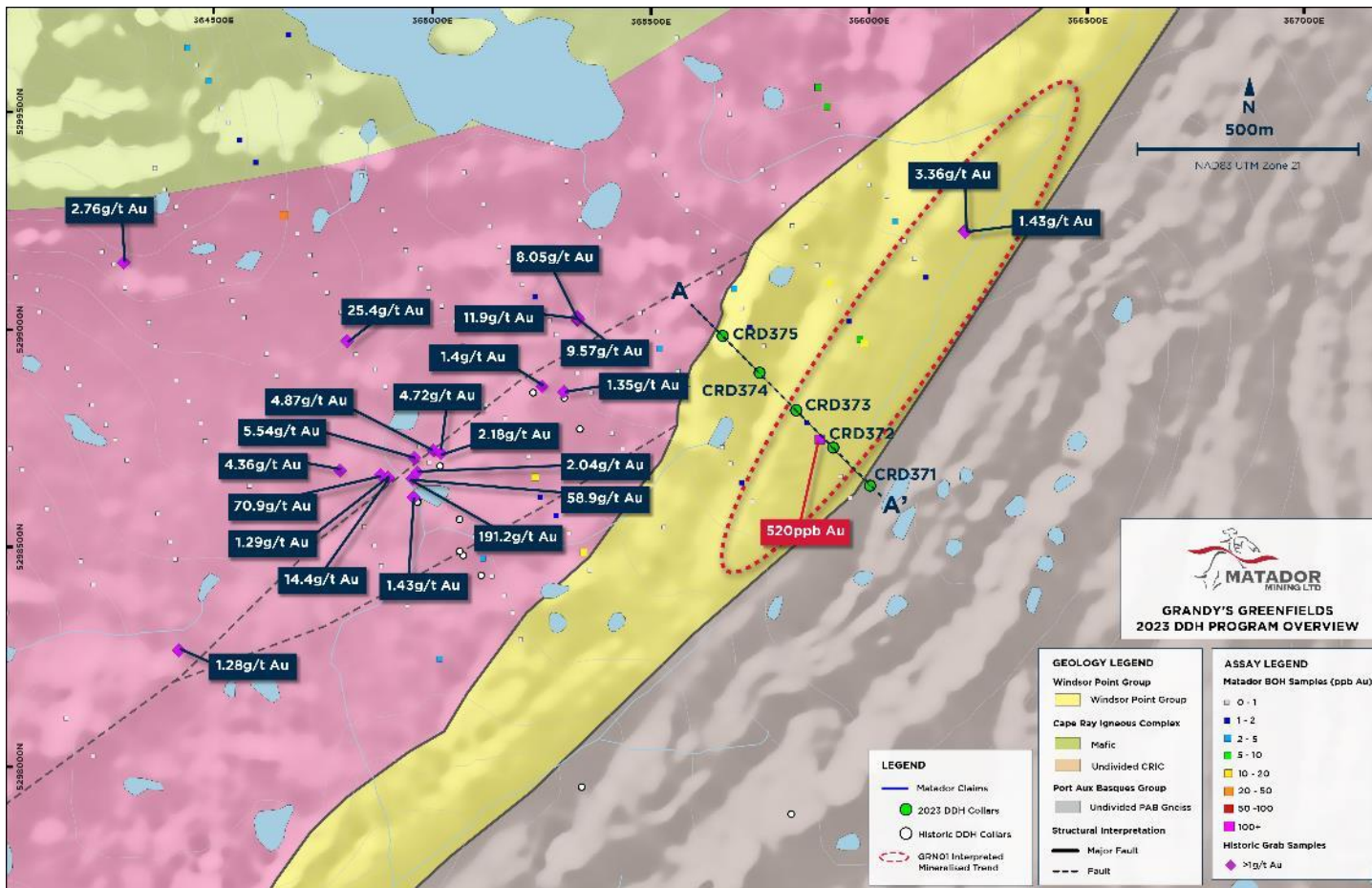
1. See ASX Announcements dated 21 Mar 2023 & 5 Apr 2023



GRANDY'S

GRANDY'S TARGET AREA

LOCATED EAST OF MALACHITE ON THE LARGE STRUCTURAL BEND OF THE CRSZ



DIAMOND DRILLING

Confirmed gold in basement: Five holes drilled near historic samples that included 43 samples with anomalous gold (e.g. 3.4 m @ 0.49 g/t)⁽¹⁾

SIGNIFICANT HISTORICAL RESULTS

2021 Bottom of hole samples

BOH recovered 520 ppb gold sample⁽¹⁾

High-grade rock chip samples (25.4 g/t gold)⁽¹⁾ and boulder (191 g/t gold)⁽¹⁾

LITHOLOGICAL TARGET

Samples and drilling targeted Windsor Point Group

PLANNED RC DRILLING

Prime target for future RC drilling as part of comprehensive BOH/Basal Till sampling program

A PORTFOLIO OF SIGNIFICANT OPPORTUNITIES

CAPE RAY

- Large geochemical and geophysical targets remain untested by drilling in the direct Brownfields environment
- Down-plunge, along strike and footwall resource extension opportunities
- Untested Windsor Point Group
- Untested indications of subsurface plutons/intrusions
- Increased understanding of the kinematics and timing of gold mineralisation – advantage previous explorers haven't had
- Large structures in footwall (Cape Ray Igneous Complex) and Hanging wall untested

ISLE AUX MORTS

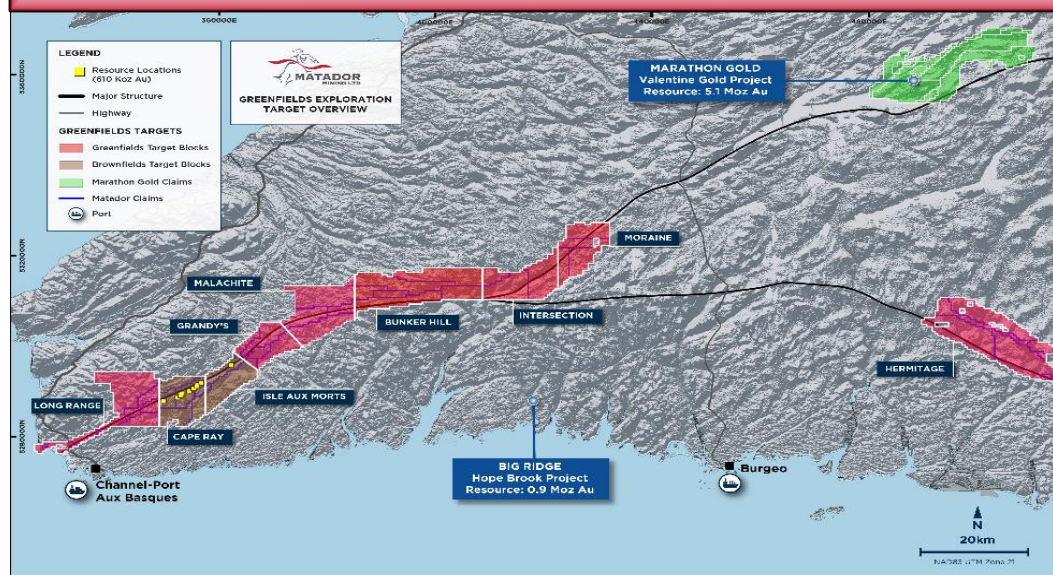
- Untested IAM deposit analogies
- Untested Windsor Point Group
- Open mineralisation from previous drill campaigns (Stag Hill)
- Anomalous geochemistry in key structural positions
- Increased understanding of the kinematics and timing of gold mineralisation – advantage previous explorers haven't had

LONG RANGE

- Untested Windsor Point Group throughout strike
- Complex structural geometries
- Historic and Matador anomalous geochemistry / prospecting results
- Bedrock gold mineralisation confirmed: prospecting and drilling (pending)
- Lack of systematic modern exploration conducted for large portion of target

MALACHITE

- Complex structural geometries: situated on first major bend in the CRSZ
- Large brittle structures splaying off the CRSZ
- World-class analogies to this Malachite's structural geometries such as Salobo and Obuasi
- Variable host lithologies
- Increased understanding of the kinematics and timing of gold mineralisation – advantage previous explorers haven't had
- Various large untested geochemical and geophysical anomalies
- Drilling has identified anomalous bedrock gold and large zones of hydrothermal fluid flow/alteration



HERMITAGE

- Confirmed bedrock mineralisation over large areas
- Great host lithologies. Analogous to global world-class deposits such as Fosterville, Bendigo
- Structural anomaly: NWN-ESE orientated Hermitage Flexure / Bay d'Espoir Shear Zone – anomalous to the islands general NE-SW trend: potential dilatant anomaly
- Hydrothermal systems identified. Vast swarms of veining and alteration
- True Greenfields potential

BUNKER HILL

- Structural anomaly to the NE-SW trending CRSZ: target is in the east-west portion
- Variable lithologies: Untested intra-shear granites same age as WGH. Evidence of episodic bimodal igneous activity.
- Sedimentary package: potential late basin extensional structural regime
- Favourable marker horizons and exploration targets in global goldfields (Yilgarn terrain) – theoretical attribute
- Large geochemical anomalies rich in base and precious metals
- Analogous age and structural setting to Lachlan Fold Belt (NSW, Aus) which hosts large gold-copper deposits (theoretical attribute)

INTERSECTION

- Intersection of two major structural features
- Major bend in the CRSZ back to the NE-SW orientation
- Underexplored
- Complex geology and structural history requiring more pragmatic modern day exploration work
- Untested WPG
- Underexplored

GRANDY'S

- Complex structural geometries: commencement of the first major bend in the CRSZ
- World-class analogies to Grandy's structural geometries such as Salobo and Obuasi – large CRSZ parallel footwall brittle structures and splays
- Variable host lithologies
- Increased understanding of the kinematics and timing of gold mineralisation – advantage previous explorers haven't had
- Various large untested geochemical and geophysical anomalies
- Drilling (assays pending) visually show large zones of hydrothermal fluid flow/alteration

SHARE PURCHASE PLAN (SPP)

OPPORTUNITY FOR EXISTING SHAREHOLDERS TO PURCHASE SHARES AT THE DEAL PRICE

KEY DATES

Event	Date
Record date for eligibility to participate in the SPP	24 October 2023
Announcement of SPP	25 October 2023
Dispatch SPP documentation	3 November 2023
Opening date of SPP	8 November 2023
Closing date of SPP	4 December 2023
Announce results of SPP	8 December 2023
Allotment of SPP shares	8 December 2023

KEY PRIORITIES

GROWING A BUSINESS WITH THE AIM OF DISCOVERING THE NEXT MOZ IN NEWFOUNDLAND

1 **RATIFY AND APPROVE EQUITY FINANCING**
THROUGH SPECIAL SHAREHOLDER MEETING

2 **PLAN FOR 2024 AND BEYOND**
PRIORITISING AND RANKING EXPLORATION TARGETS, PLANNING FOR A WINTER PROGRAM

3 **ADVANCE CORPORATE INITIATIVES**
CONTINUE TO SEEK OUT OPPORTUNITIES FOR A CANADIAN STOCK LISTING

4 **SUPPORT THE BUSINESS MODEL**
ASSETS, PEOPLE & OWNERS



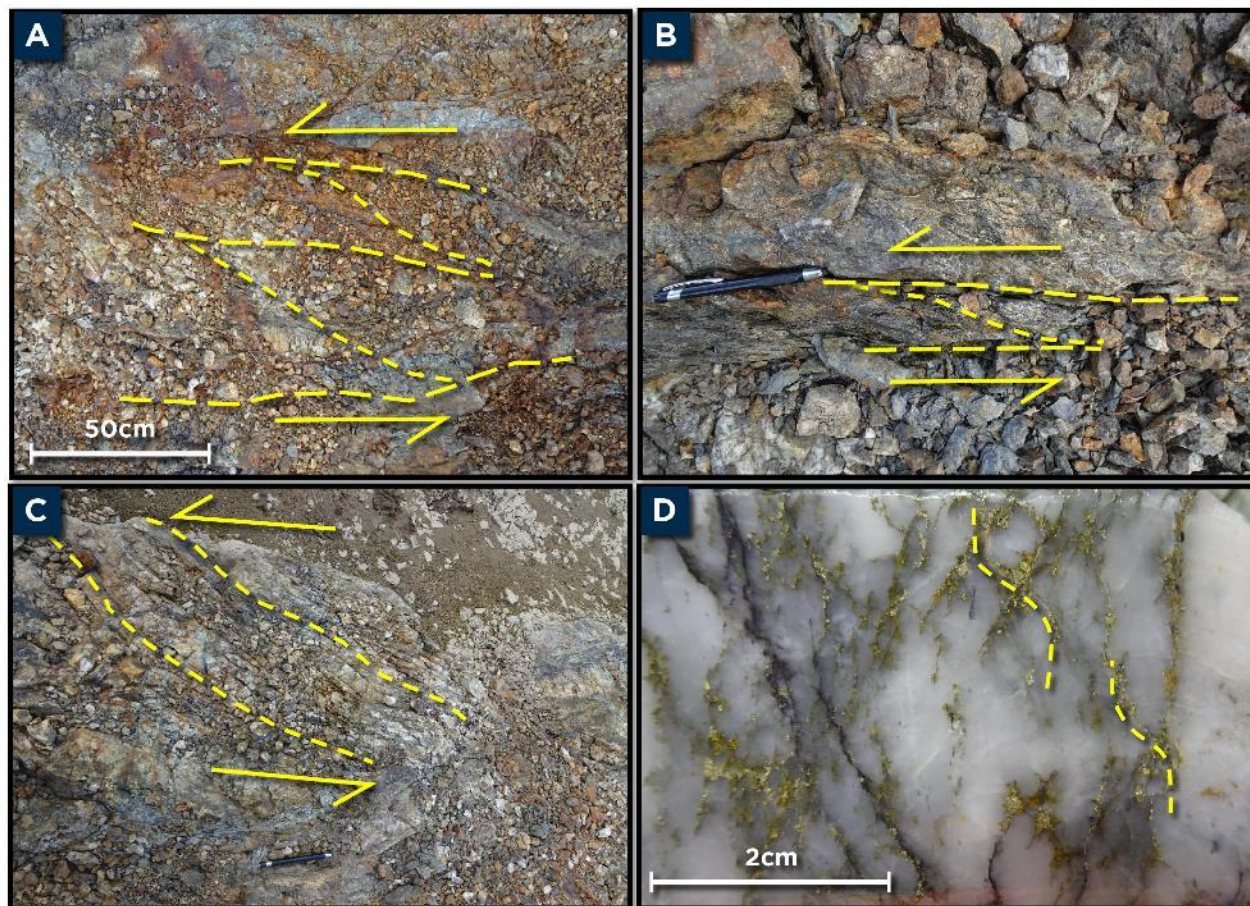
Matador Mining Ltd

24 Hasler Road
Osborne Park WA 6017
Australia
www.matadormining.com.au

Sam Pazuki
Managing Director & CEO
Ph: +61 8 6117 0478 (Australia)
Ph: +416 915 3178 (Canada)
E: info@matadormining.com.au

DEFINING THE STRUCTURAL CONTROLS ON GOLD

STRUCTURAL STUDY



KINEMATICS OF GOLD

Gold is associated with sinistral movement

Key outcrops in Central Zone define gold and sulphide mineralisation is controlled by a sinistral event

TIMING OF GOLD

Gold is later than previously interpreted

Relationship between mineralisation and geology suggests gold is late in the history

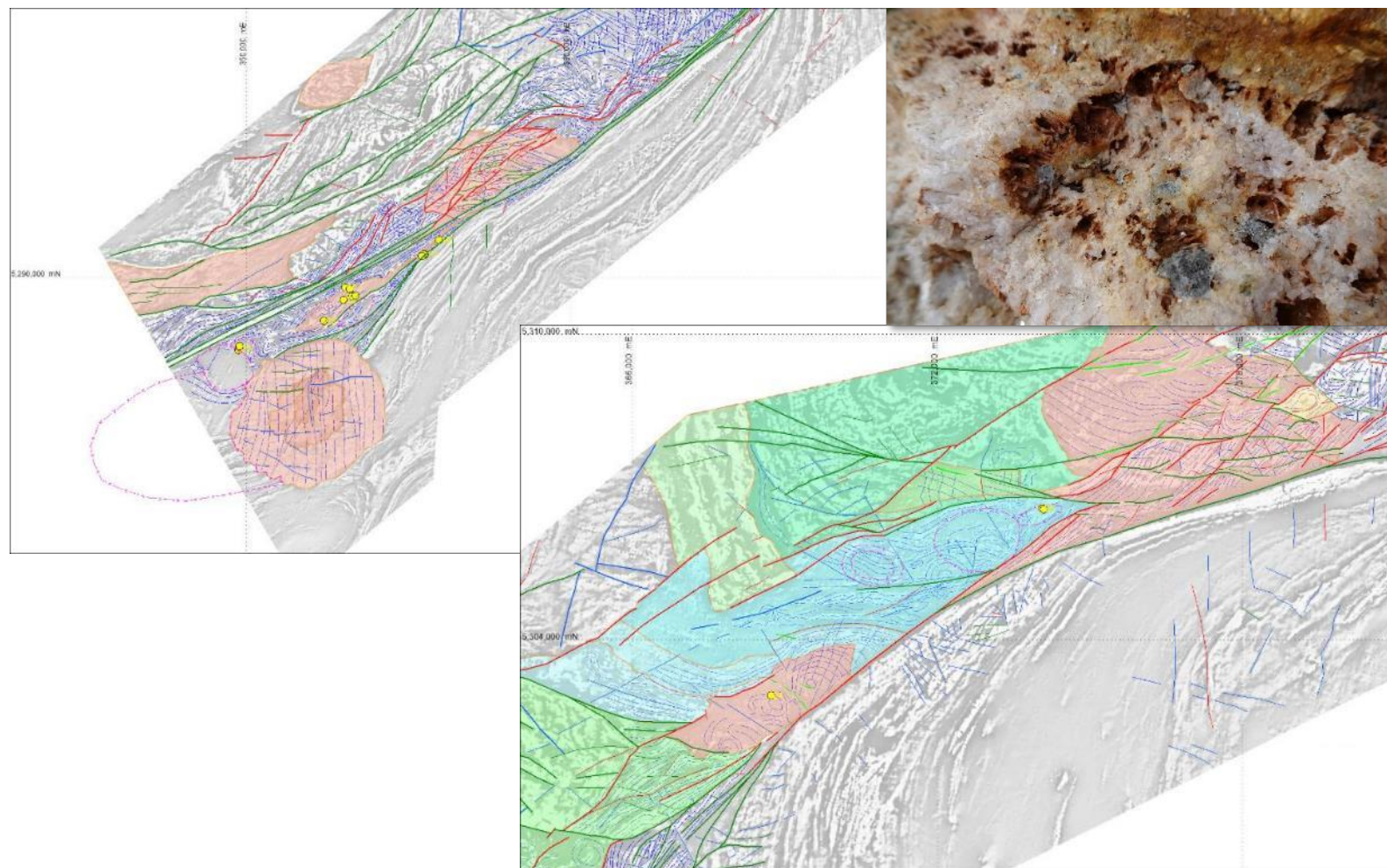
IMPLICATIONS FOR TARGETING

Unlocking new geometries and rock types

Targeting geometries conducive to opening space in a sinistral system as well as rock types that were previously thought to be too young for gold

POTENTIAL FOR SUBSURFACE PLUTONS

SEVERAL GEOMETRIC ANOMALIES SUGGESTIVE OF BURIED PLUTONS



EPIZONAL TEXTURES SUGGEST HIGHER EMPLACEMENT DEPTHS AS PREVIOUSLY THOUGHT

SOME OCCURRENCES WITHIN EXISTING GOLD ANOMALIES

OVOID GEOMETRIES THAT MAY BE PRODUCTS OF DEFORMATION INFLUENCED BY SUB-SURFACE PLUTONS

2023 MINERAL RESOURCE (1)



ASX: MZZ | OTCQB: MZZMF

UPDATED MINERAL RESOURCE ESTIMATE – CONSTRAINED ESTIMATE, INCLUSIVE OF 2020-2022 DRILLING

2023 MINERAL RESOURCE ESTIMATE				
	Cut-off Grade	Tonnes	Grade	Contained Metal
	g/t Au	Mt	g/t Au	koz Au
OPEN PIT – TOTAL INDICATED & INFERRED MINERAL RESOURCES				
Central Zone	0.30	4.2	2.82	377
Window Glass Hill	0.30	4.5	0.96	140
Isle Aux Morts	0.30	0.5	2.35	35
Big Pond	0.30	0.1	3.01	9
TOTAL OPEN PIT	0.30	9.3	1.88	560
UNDERGROUND – TOTAL INDICATED & INFERRED MINERAL RESOURCES				
Central Zone	2.00	0.4	3.80	49
TOTAL UNDERGROUND	2.00	0.4	3.80	49
OVERALL – TOTAL INDICATED & INFERRED MINERAL RESOURCES				
TOTAL RESOURCE		9.7	1.96	610

2023 MINERAL RESOURCE (1)

			OPEN PIT MINERAL RESOURCE ESTIMATE				UNDERGROUND MINERAL RESOURCE ESTIMATE			
Deposit		Zone	Cut-off Grade	Tonnes	Grade	Contained Metal	Cut-off Grade	Tonnes	Grade	Contained Metal
			g/t Au	kt	g/t Au	koz Au	g/t Au	kt	g/t Au	koz Au
INDICATED MINERAL RESOURCES	Central Zone	Zone 4	0.30	1,205	3.88	151	2.00	169	2.89	16
		Zone 51	0.30	546	5.15	90	2.00	91	4.70	14
		Zone 41	0.30	841	2.04	55	2.00	8	2.82	1
		PW	0.30	533	0.99	17	-	-	-	-
		H Zone	0.30	70	1.24	3	-	-	-	-
		Central Total	0.30	3,196	3.07	316	2.00	268	3.50	30
	WGH	WGH	0.30	2,512	1.01	81	-	-	-	-
		Angus	0.30	-	-	-	-	-	-	-
		WGH Total	0.30	2,512	1.01	81	-	-	-	-
	Isle Aux Morts	All	0.30	220	2.81	20	-	-	-	-
Big Pond	All	0.30	14	5.63	3	-	-	-	-	
TOTAL OP INDICATED			0.30	5,943	2.20	420	2.00	268	3.50	30
INFERRED MINERAL RESOURCES	Central Zone	Zone 4	0.30	180	3.43	20	2.00	21	3.19	2
		Zone 51	0.30	51	2.28	4	2.00	80	5.17	13
		Zone 41	0.30	104	3.16	11	2.00	36	3.29	4
		PW	0.30	620	1.32	26	-	-	-	-
		H Zone	0.30	4	0.81	0.1	-	-	-	-
		Central Total	0.30	959	1.97	61	2.00	137	4.38	19
	WGH	WGH	0.30	1,192	0.98	37	-	-	-	-
		Angus	0.30	842	0.79	21	-	-	-	-
		WGH Total	0.30	2,034	0.90	59	-	-	-	-
	Isle Aux Morts	All	0.30	244	1.93	15	-	-	-	-
	Big Pond	All	0.30	74	2.50	6	-	-	-	-
TOTAL OP INFERRED			0.30	3,311	1.32	141	2.00	137	4.38	19