



## DRILLING SET TO COMMENCE AT TETRIS

### DIAMOND DRILL RIG MOBILISED TO HIGH PRIORITY GREENFIELD TARGET AT MINYARI DOME PROJECT

Antipa Minerals Ltd (ASX: **AZY**) (**Antipa** or **the Company**) is pleased to advise that diamond core drilling is set to commence at the Tetris target situated within the 100% owned Minyari Dome Gold-Copper Project in the Paterson Province of Western Australia (Figure 2).

### Highlights

- **Diamond drill rig mobilised to the Tetris Target**, 35km north-east of the Minyari Deposit, to test a **bulls-eye shaped, sized and amplitude partially coincident magnetic-gravity high geophysical anomaly**.
- Tetris bears **significant geophysical likeness to the** large-scale 5.5 Moz gold and 222 kt copper **Havieron deposit**<sup>1</sup>.
- Planned 800m deep diamond core drill hole **represents the first hole in this highly prospective greenfield gold-copper target**.
- Exploration drilling at Tetris supported by Western Australian Government with **A\$220,000 in co-funding provided through the Exploration Incentive Scheme (EIS)**.
- Drilling at Tetris forms part of the larger CY2023 Phase 2 Minyari Dome Exploration Programme, **testing several key growth and discovery targets**.

### **Antipa's Managing Director, Roger Mason commented:**

*"We are pleased the diamond rig has been mobilised to site as part of our expanded CY2023 Phase 2 Exploration Programme. Drilling at Tetris represents a truly greenfield opportunity with the closest previous drill hole more the 15km away. This exciting target features a bulls-eye shaped geophysical likeness to that associated with the large, regional Havieron gold-copper deposit. With the rig on site and our exploration team ready to go, we are very eager to see what we can uncover in the coming weeks."*

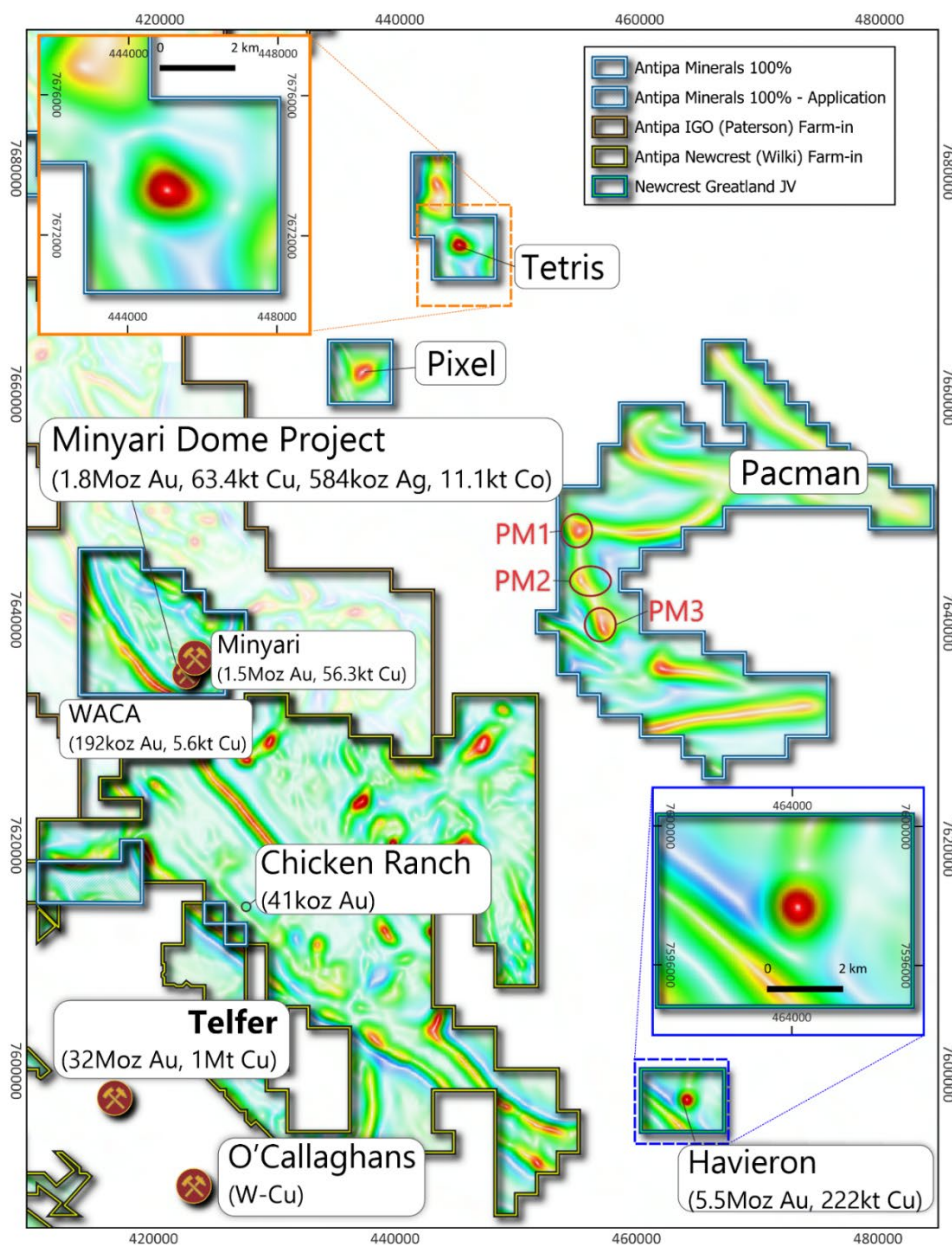
### **Expanded CY2023 Phase 2 Drilling Programme**

Drilling is underway in our expanded CY2023 Phase 2 programme at Minyari Dome scheduled for up to 10,000m of RC drilling, 4,200m of diamond core drilling and 5,000m of air core drilling (refer ASX release dated 10 October 2023). The drilling programme has been designed to test key growth and discovery targets including GEO-01, Pacman, Tetris and several other regional targets subject to budgeting and other exploration considerations.

<sup>1</sup> Refer Greatland Gold Plc's website ([www.greatlandgold.com](http://www.greatlandgold.com)) and London Stock Exchange (AIM: GGP) news releases ([www.londonstockexchange.com](http://www.londonstockexchange.com)) and Newcrest Mining Ltd ([www.newcrest.com.au](http://www.newcrest.com.au)) and Australian Stock Exchange (ASX: NCM) news releases ([www.asx.com.au](http://www.asx.com.au)) including the Mineral Resource statement released 19 August 2022.

## Drilling set to commence at Tetris

Diamond drill rig mobilised to the Tetris greenfield target, initial plan is to complete a single 800m deep diamond core drill hole, with the potential for follow-up to be based on results, as part of the broader CY2023 Phase 2 Exploration Programme. The high priority Tetris target, located 35km north-east of the Minyari deposit, bears significant geophysical likeness to the large-scale 5.5 Moz gold and 222 kt copper Havieron deposit (LSE: GGP) discovered in the region (Figures 1 and 3). This includes a similar bulls-eye shaped, sized and amplitude partially coincident magnetic-gravity high geophysical signature, which is hosted by interpreted equivalent stratigraphy under approximately 450m of cover. The closest drill hole to Tetris is located approximately 15km away.



**Figure 1: Plan showing 100% owned Minyari Dome Project (and partial region of Wilki Project) aeromagnetics highlighting comparison of the bulls-eye magnetic high anomalies for the 5.5 Moz gold and 222 kt copper Havieron deposit and the Tetris target. Both Havieron and Tetris also have partially coincident gravity high anomalies. Also note the Pacman and Pixel target magnetic high areas, with PM2 and PM3 including gravity high anomalies (not shown). NB: Over Airborne magnetic image and Regional GDA2020 / MGA Zone 51 co-ordinates, 20km grid (2 x insets with 4km grid and scale bars).**

Diamond core drill testing of the Tetris greenfield target is supported by a A\$220,000 Western Australian Government co-funding EIS grant.

**Release authorised by**

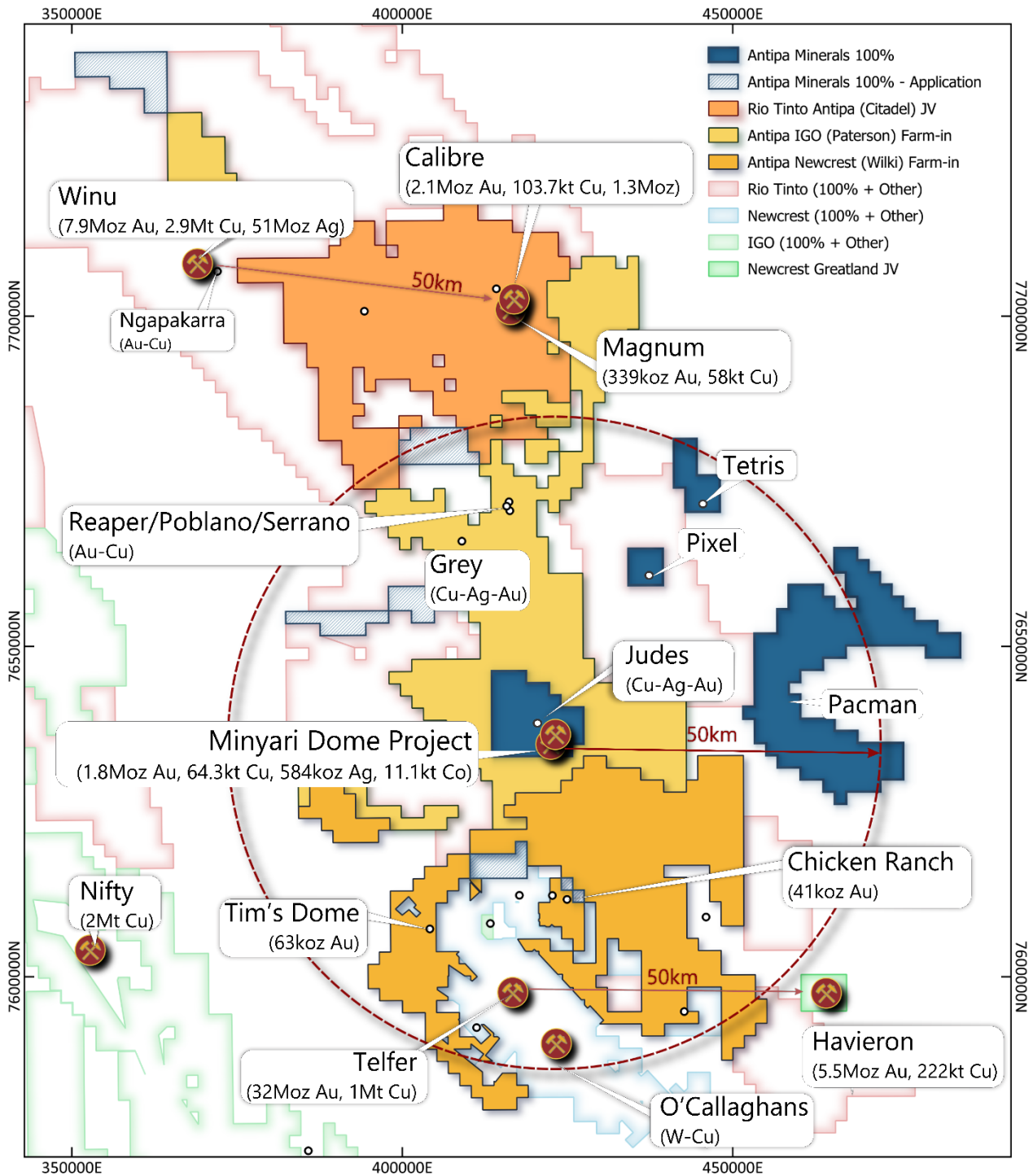
**Roger Mason**  
**Managing Director**

**For further information, please visit or contact:**

**Roger Mason**  
Managing Director  
Antipa Minerals Ltd  
+61 (0)8 9481 1103

**Mark Rodda**  
Executive Director  
Antipa Minerals Ltd  
+61 (0)8 9481 1103

**Michael Vaughan**  
Media Relations  
Fivemark Partners  
+61 (0)422 602 720



**Figure 2: Plan showing location of Antipa 100% owned tenements including gold-copper resources and the Tetris and Pacman EIS target locations, Rio Tinto-Antipa Citadel Joint Venture Project, including the Calibre and Magnum resources. Also shows Antipa-Newcrest Wilki Farm-in Project, Antipa-IGO Paterson Farm-in Project, Newcrest Mining Ltd's Telfer gold-copper-silver mine and O'Callaghans tungsten and copper deposit, Rio Tinto's Winu copper-gold-silver resource and development project, Newcrest-Greatland Gold's Havieron gold-copper development project and Cyprium's Nifty copper mine.**

NB: Rio and IGO tenement areas include related third-party Farm-ins/Joint Ventures.

NB: Regional GDA2020 / MGA Zone 51 co-ordinates, 50km grid.

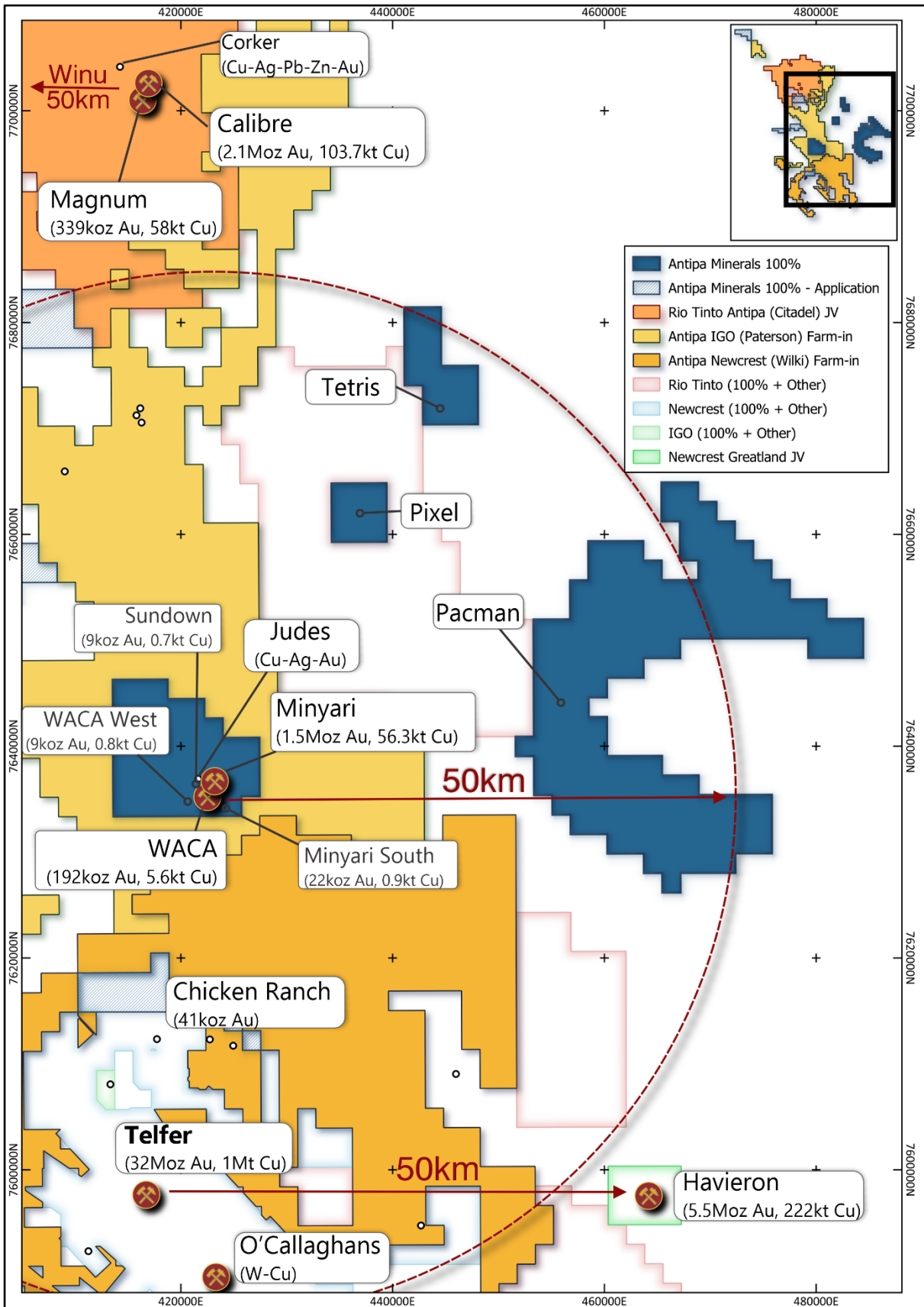


Figure 3: Project Location map showing Antipa's Minyari Dome (100%) Project, including gold-copper resources and the Tetriss and Pacman EIS target locations, and 35km proximity to Newcrest Mining Ltd's Telfer gold-copper-silver mine and 22 Mtpa processing facility.

NB: Regional GDA2020 / MGA Zone 51 co-ordinates, 20km grid.

**About Antipa Minerals:** Antipa Minerals Ltd (ASX: **AZY**) (**Antipa** or the **Company**) is a leading mineral exploration company with a strong track record of success in discovering world-class gold-copper deposits in the highly prospective Paterson Province of Western Australia. The Company's exploration and advancement programme is focused on identifying and unlocking the full potential of the region, which offers significant opportunities for profitable mining operations.

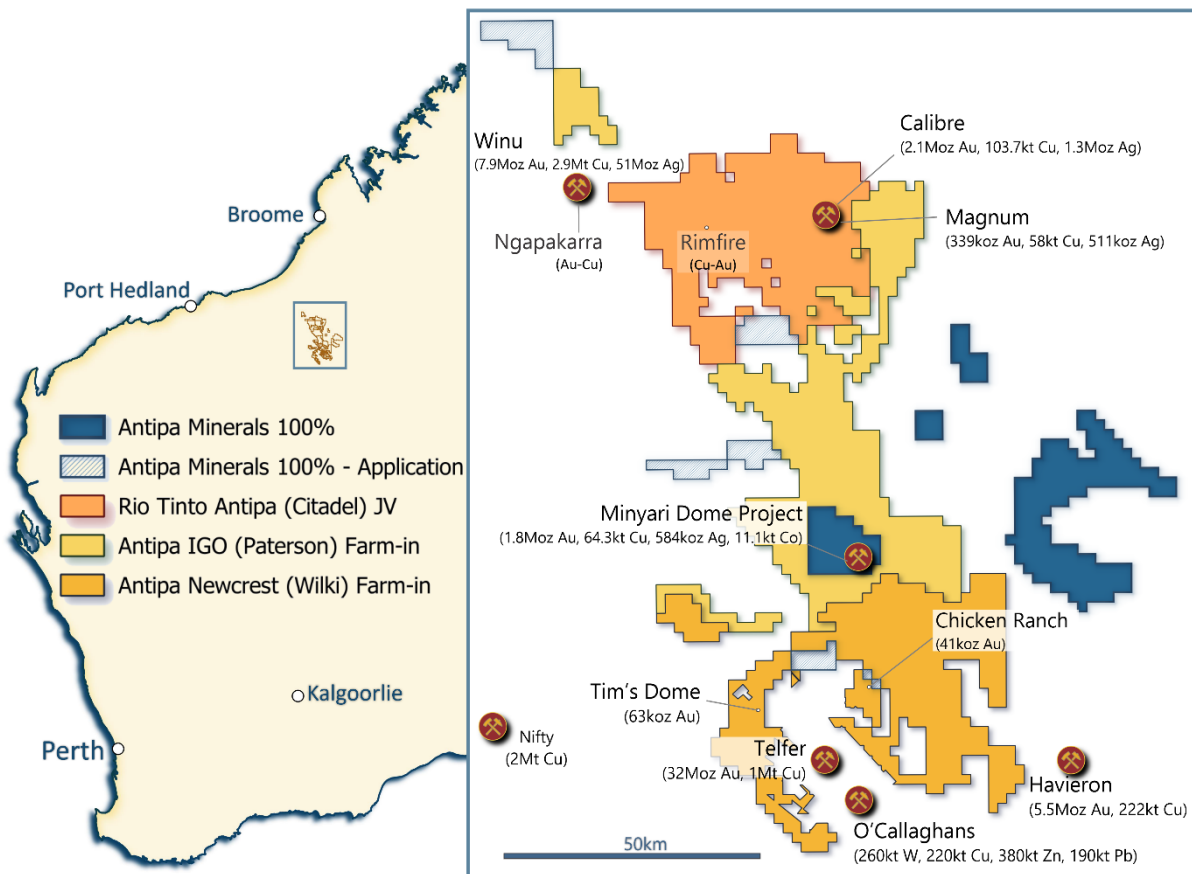
The Company's tenement holding covers over 5,100km<sup>2</sup> in a region that is home to Newcrest's world-class Telfer mine and some of the world's more recent large gold-copper discoveries including Rio Tinto's Winu and Newcrest-Greatland Gold's Havieron.

Exploration success has led to the discovery of several major mineral deposits on Antipa's ground, including the wholly owned, flagship 900km<sup>2</sup> Minyari Dome Gold-Copper Project. Minyari Dome currently hosts a 1.8 Moz gold resource (at 1.6 g/t) which was the subject of a Scoping Study (August 2022) indicating the potential for a sizeable initial development with further substantial upside.

Antipa is pursuing an aggressive drilling programme this year, targeting substantial and rapid growth to the existing gold-copper resources at Minyari Dome, delivering strong further value enhancement to the existing development opportunity, and making new significant gold-copper discoveries.

The 900km<sup>2</sup> Minyari Dome Project is complemented by three large-scale growth projects covering a total of 4,200km<sup>2</sup> which have attracted major listed miners to agree multi-million-dollar farm-in and joint venture (**JV**) arrangements:

- Citadel Project (33% Antipa): Rio Tinto JV over 1,200km<sup>2</sup>
- Wilki Project (100% Antipa): Newcrest farming-in 1,470km<sup>2</sup>
- Paterson Project (100% Antipa): IGO farming-in 1,550km<sup>2</sup>



**Forward-Looking Statements:** This document may include forward-looking statements. Forward-looking statements include, but are not limited to, statements concerning Antipa Mineral Ltd's planned exploration programme and other statements that are not historical facts. When used in this document, the words such as "could," "plan," "estimate," "expect," "intend," "may," "potential," "should," and similar expressions are forward-looking statements. Although Antipa Minerals Ltd believes that its expectations reflected in these forward-looking statements are reasonable, such statements involve risks and uncertainties and no assurance can be given that actual results will be consistent with these forward-looking statements.

**Table: Minyari Dome Project May 2022 Mineral Resource Estimate**

<b>Minyari Dome Project (Antipa 100%)</b>											
<b>Deposit</b>	<b>Au cut-off</b>	<b>Category</b>	<b>Tonnes (Mt)</b>	<b>Au grade (g/t)</b>	<b>Cu grade (%)</b>	<b>Ag grade (g/t)</b>	<b>Co (%)</b>	<b>Au (oz)</b>	<b>Cu (t)</b>	<b>Ag (oz)</b>	<b>Co (t)</b>
Minyari	0.5 Au	Indicated	15.00	1.17	0.19	0.54	0.04	567,000	27,800	259,600	5,930
Minyari	0.5 Au	Inferred	2.70	1.12	0.12	0.31	0.02	96,000	3,300	26,300	640
Minyari	1.5 Au	Indicated	4.40	2.30	0.26	0.83	0.03	328,000	11,400	118,400	1,450
Minyari	1.5 Au	Inferred	6.20	2.61	0.22	0.66	0.03	523,000	13,800	132,700	1,590
<b>Total Minyari</b>			<b>28.30</b>	<b>1.66</b>	<b>0.20</b>	<b>0.59</b>	<b>0.03</b>	<b>1,514,000</b>	<b>56,300</b>	<b>537,000</b>	<b>9,610</b>
WACA	0.5 Au	Indicated	1.69	0.97	0.11	0.17	0.02	52,000	1,900	9,400	310
WACA	0.5 Au	Inferred	1.54	1.02	0.12	0.18	0.02	51,000	1,800	9,100	300
WACA	1.5 Au	Inferred	1.63	1.69	0.11	0.17	0.03	89,000	1,900	9,000	560
<b>Total WACA</b>			<b>4.86</b>	<b>1.23</b>	<b>0.11</b>	<b>0.18</b>	<b>0.02</b>	<b>192,000</b>	<b>5,600</b>	<b>27,500</b>	<b>1,170</b>
Minyari South	0.5 Au	Inferred	0.15	4.51	0.56	1.04	0.05	22,000	900	5,100	80
<b>Total Minyari South</b>			<b>0.15</b>	<b>4.51</b>	<b>0.56</b>	<b>1.04</b>	<b>0.05</b>	<b>22,000</b>	<b>900</b>	<b>5,100</b>	<b>80</b>
Sundown	0.5 Au	Inferred	0.20	1.38	0.36	0.72	0.03	9,000	700	4,700	60
<b>Total Sundown</b>			<b>0.20</b>	<b>1.38</b>	<b>0.36</b>	<b>0.72</b>	<b>0.03</b>	<b>9,000</b>	<b>700</b>	<b>4,700</b>	<b>60</b>
WACA West	0.5 Au	Inferred	0.39	0.73	0.17	0.81	0.03	9,000	700	10,200	120
WACA West	1.5 Au	Inferred	0.01	0.86	0.50	0.05	0.01	304	55	17	1
<b>Total WACA West</b>			<b>0.40</b>	<b>0.73</b>	<b>0.18</b>	<b>0.79</b>	<b>0.03</b>	<b>9,304</b>	<b>755</b>	<b>10,217</b>	<b>121</b>
<b>Total Minyari Dome Project</b>			<b>33.92</b>	<b>1.60</b>	<b>0.19</b>	<b>0.54</b>	<b>0.03</b>	<b>1,746,304</b>	<b>64,255</b>	<b>584,517</b>	<b>11,041</b>

**Notes – Minyari Dome Project Table above:**

1. Discrepancies in totals may exist due to rounding.
2. The resource has been reported at cut-off grades above 0.5 g/t and 1.5 g/t gold equivalent (Aueq); the calculation of the metal equivalent is documented below.
3. The 0.5 g/t and 1.5 g/t Aueq cut-off grades assume open pit and underground mining, respectively.
4. The resource is 100% owned by Antipa Minerals.

**Table: Citadel Project (Antipa 33% and Rio Tinto 67% JV) May 2021 Mineral Resource Estimate**

<b>Citadel Project (Antipa 33%)</b>									
<b>Deposit</b>	<b>Au cut-off</b>	<b>Category</b>	<b>Tonnes (Mt)</b>	<b>Au grade (g/t)</b>	<b>Cu grade (%)</b>	<b>Ag grade (g/t)</b>	<b>Au (Moz)</b>	<b>Cu (t)</b>	<b>Ag (Moz)</b>
Calibre	0.5 Au	Inferred	92	0.72	0.11	0.46	2.10	104,000	1.3
Magnum	0.5 Au	Inferred	16	0.70	0.37	1.00	0.34	58,000	0.5
<b>Total Citadel Project (100% basis)</b>			<b>108</b>	<b>0.72</b>	<b>0.15</b>	<b>0.54</b>	<b>2.44</b>	<b>162,000</b>	<b>1.8</b>

**Notes – Citadel Project Table above:**

1. The resource has been reported at cut-off grades above 0.5 g/t and 0.8 g/t gold equivalent (Aueq); the calculation of the metal equivalent is documented below.
2. Both the 0.5 g/t and 0.8 g/t Aueq cut-offs assume large scale open pit mining.
3. The resource tonnages tabled are on a 100% basis, with Antipa's current joint venture interest being approximately 33%.
4. Small discrepancies may occur due to the effects of rounding.

**Table: Wilki Project (Antipa 100%) May 2019 Mineral Resource Estimate**

<b>Wilki Project (100%)</b>					
<b>Deposit</b>	<b>Au cut-off</b>	<b>Category</b>	<b>Tonnes (Mt)</b>	<b>Au grade (g/t)</b>	<b>Au (oz)</b>
Chicken Ranch	0.5 Au	Inferred	0.8	1.6	40,300
Tims Dome	0.5 Au	Inferred	1.8	1.1	63,200
<b>Total Wilki Project</b>			<b>2.4</b>	<b>1.3</b>	<b>103,500</b>

**Notes – Wilki Project Table above:**

1. Small discrepancies may occur due to the effects of rounding.
2. Wilki Project Mineral Resources are tabled on a 100% basis, with Antipa's current interest being 100%.

**Competent Persons Statement – Exploration Results:** The information in this document that relates to Exploration Results is based on and fairly represents information and supporting documentation compiled by Mr Roger Mason, a Competent Person who is a Member of The Australasian Institute of Mining and Metallurgy. Mr Mason is a full-time employee of the Company. Mr Mason is the Managing Director of Antipa Minerals Limited, is a substantial shareholder of the Company and is an option holder of the Company. Mr Mason has sufficient experience relevant to the style of mineralisation and type of deposit under consideration and to the activity being undertaking to qualify as a Competent Person as defined in the 2012 Edition of the 'Australasian Code for Reporting of Exploration Results, Mineral Resources and Ore Reserves'. The Company confirms that the form and context in which the Competent Person's findings are presented have not been materially modified from the original market announcements, all of which are available to view on [www.antipaminerals.com.au](http://www.antipaminerals.com.au) and [www.asx.com.au](http://www.asx.com.au). Mr Mason, whose details are set out above, was the Competent Person in respect of the Exploration Results in these original market announcements.

**Competent Persons Statement – Mineral Resource Estimations for the Minyari Dome Project Deposits, Calibre Deposit, Magnum Deposit and Chicken Ranch Area Deposits and Tim's Dome Deposit:** The information in this document that relates to the estimation and reporting of the Minyari Dome Project deposits Mineral Resources is extracted from the report entitled "Minyari Dome Project Gold Resource Increases 250% to 1.8 Moz" created on 2 May 2022 with Competent Persons Ian Glacken, Jane Levett, Susan Havlin and Victoria Lawns, the Tim's Dome and Chicken Ranch deposits Mineral Resources is extracted from the report entitled "Chicken Ranch and Tims Dome Maiden Mineral Resources" created on 13 May 2019 with Competent Person Shaun Searle, the Calibre deposit Mineral Resource information is extracted from the report entitled "Calibre Gold Resource Increases 62% to 2.1 Million Ounces" created on 17 May 2021 with Competent Person Ian Glacken, and the Magnum deposit Mineral Resource information is extracted from the report entitled "Calibre and Magnum Deposit Mineral Resource JORC 2012 Updates" created on 23 February 2015 with Competent Person Patrick Adams, all of which are available to view on [www.antipaminerals.com.au](http://www.antipaminerals.com.au) and [www.asx.com.au](http://www.asx.com.au). The Company confirms that it is not aware of any new information or data that materially affects the information included in the original market announcements and that all material assumptions and technical parameters underpinning the estimates in the relevant original market announcements continue to apply and have not materially changed. The Company confirms that the form and context in which the Competent Person's findings are presented have not been materially modified from the original market announcements.

The information in this document that relates to the **Scoping Study for the Minyari Dome Project** is extracted from the report entitled "Strong Minyari Dome Scoping Study Outcomes" reported on 31 August 2022 which was compiled by Competent Person Roger Mason, which is available to view on [www.antipaminerals.com.au](http://www.antipaminerals.com.au) and [www.asx.com.au](http://www.asx.com.au). The Company confirms that it is not aware of any new information or data that materially affects the information included in the original market announcement and that all material assumptions and technical parameters underpinning the study in the relevant original market announcement continue to apply and have not materially changed. The Company confirms that the form and context in which the Competent Person's findings are presented have not been materially modified from the original market announcement.



## Gold Metal Equivalent Calculations

### Gold Metal Equivalent Information – Minyari Dome Project Mineral Resource Gold Equivalent reporting cut-off grade:

The 0.5 g/t and 1.5 g/t Aueq cut-off grades assume open pit and underground mining, respectively.

A gold equivalent grade (**Aueq**) has been calculated from individual gold, copper, silver and cobalt grades. This equivalent grade has been calculated and declared in accordance with Clause 50 of the JORC Code (2012), using the following parameters:

- The metal prices used for the calculation are as follows:
  - US\$ 1,944 per oz gold
  - US\$ 4.74 per lb copper
  - US\$ 25.19 per oz silver
  - US\$ 77,380 per tonne cobalt
- An exchange rate (A\$:US\$) of 0.7301 was assumed
- Metallurgical recoveries for by-product metals, based upon Antipa test-work in 2017 and 2018, are as follows:
  - Copper = 85.0%, Silver = 85%, Cobalt = 68%
- The gold equivalent formula, based upon the above commodity prices, exchange rate and recoveries, is thus:
  - **Aueq** = (Au g/t) + (Ag g/t \* 0.011) + (Cu % \* 1.42) + (Co % \* 8.42)

### Gold Metal Equivalent Information - Calibre Mineral Resource Gold Equivalent reporting cut-off grade and Gold Equivalent grade:

A gold equivalent grade (**Aueq**) has been calculated from individual gold, copper and silver grades. This equivalent grade has been calculated and declared in accordance with Paragraph 50 of the JORC Code, using the following parameters:

- The metal prices used for the calculation are as follows:
  - US\$ 1,874 /oz gold
  - US\$ 4.50 /lb copper
  - US\$ 25.25 /oz silver
- An exchange rate (A\$:US\$) of 0.722 was assumed.
- Metallurgical recoveries, based upon Antipa test-work in 2014, are as follows:
  - Gold = 84.5%, Copper = 90.0%, Silver = 85.4%
- A factor of 105% (as with the previous estimate) has been applied to the recoveries for gold, copper and silver to accommodate further optimisation of metallurgical performance. Antipa believes that this is appropriate, given the preliminary status of the recovery test-work.
- Tungsten has not been estimated and does not contribute to the equivalent formula.
- The gold equivalent formula, based upon the above commodity prices, exchange rate, recoveries, and using individual metal grades provided by the Citadel Project Mineral Resource Estimate table, is thus:
  - **Aueq** = Au (g/t) + (1.75\*Cu%) + (0.014\*Ag g/t)

### Gold Metal Equivalent Information - Magnum Mineral Resource Gold Equivalent reporting cut-off grade:

A gold equivalent grade (**Aueq**) has been calculated from individual gold, copper, silver and tungsten grades. This equivalent grade has been calculated and declared in accordance with Paragraph 50 of the JORC Code, using the following parameters:

- The metal prices used for the calculation are as follows:
  - US\$ 1,227 /oz gold
  - US\$ 2.62 /lb copper
  - US\$ 16.97 /oz silver
  - US\$ 28,000 /t WO<sub>3</sub> concentrate
- An exchange rate (A\$:US\$) of 0.778 was assumed.
- Metallurgical recoveries, based upon Antipa test-work in 2014, are as follows:
  - Gold = 84.5%, Copper = 90.0%, Silver = 85.4% and W = 50.0%
- A factor of 105% (as with the previous estimate) has been applied to the recoveries for gold, copper and silver to accommodate further optimisation of metallurgical performance. Antipa believes that this is appropriate, given the preliminary status of the recovery test-work.
- Note that the tungsten recovery of 50% is considered indicative at this preliminary stage based on the initial metallurgical findings.
- Conversion of W% to WO<sub>3</sub>% grade requires division of W% by 0.804.
- The gold equivalent formula, based upon the above commodity prices, exchange rate, and recoveries, is thus:
  - **Aueq** = (Au (g/t) x 0.845) + ((%Cu x (74.32/50.69) x 0.90)) + ((Ag (g/t) x (0.70/50.69) x 0.854)) + ((%W/0.804 x (359.80/50.69) x 0.50))

It is the Company's opinion that all the metals included in the metal equivalents calculations above have a reasonable potential to be recovered and sold.