



**RED 5** Limited

ASX Code: RED

Resources Rising Stars  
Mark Williams (MD & CEO)  
November 2023



## Competent Person Statements for JORC 2012 Mineral Resource and Ore Reserves

- The information in this presentation that relates to the Mineral Resources for the King of the Hills deposit is extracted from the ASX announcement titled "Mineral Resource and Ore Reserve Update 30 June 2023" released on 7 September 2023. The information in this presentation relating to the King of the Hills regional and satellite deposits is extracted from the ASX announcement titled "Mineral Resource and Ore Reserve Update 30 June 2023" released on 7 September 2023. The information in this presentation relating to the King of the Hills Ore Reserve is extracted from the ASX announcement titled "Mineral Resource and Ore Reserve Update 30 June 2023" released on 7 September 2023.
- The information in this presentation that relates to the Mineral Resources and Ore Reserves for the Darlot Underground deposit relates to the ASX announcement titled "Mineral Resource and Ore Reserve Update 30 June 2023" released on 7 September 2023, which are available on the ASX web-site. Information in this presentation relating to Cables and Mission are from ASX announcements: "Mineral Resource and Ore Reserve Update 30 June 2023" released on 7 September 2023. All announcements are available on the ASX web-site.
- Red 5 confirms that it is not aware of any new information or data that materially affects the information included in the original market announcements, and that all material assumptions and technical parameters underpinning the estimates in the relevant market announcements continue to apply and have not materially changed. The Company confirms that the form and context in which the Competent Persons findings are presented have not been materially modified from the original market announcements.

## Forward-Looking Statements

- Certain statements made during or in connection with this presentation contain or comprise certain forward-looking statements regarding RED's Mineral Resources and Reserves, exploration activities, project development operations, production rates, life of mine, projected cash flow, capital expenditure, operating costs and other economic performance and financial condition as well as general market outlook. Although RED believes that the expectations reflected in such forward-looking statements are reasonable, such expectations are only predictions and are subject to inherent risks and uncertainties which could cause actual values, results, performance or achievements to differ materially from those expressed, implied or projected in any forward-looking statements and no assurance can be given that such expectations will prove to have been correct. Accordingly, results could differ materially from those set out in the forward-looking statements as a result of, among other factors, changes in economic and market conditions, delays or changes in project development, success of business and operating initiatives, changes in the regulatory environment and other government actions, fluctuations in metals prices and exchange rates and business and operational risk management. Except for statutory liability which cannot be excluded, each of RED, its officers, employees and advisors expressly disclaim any responsibility for the accuracy or completeness of the material contained in this Investor Presentation and excludes all liability whatsoever (including in negligence) for any loss or damage which may be suffered by any person as a consequence of any information in this presentation or any error or omission. RED undertakes no obligation to update publicly or release any revisions to these forward-looking statements to reflect events or circumstances after today's date or to reflect the occurrence of unanticipated events other than required by the Corporations Act and ASX Listing Rules. Accordingly, you should not place undue reliance on any forward-looking statement.

## Authorisation

- This presentation has been authorised for release by the Board.

# Red 5 asset overview



Red 5's assets comprise the King of the Hills (KOTH) Gold Mine, Darlot Gold Mine and a 3.25% net smelter royalty over the Siana Gold Mine

## KOTH Summary

Mineral Resource <sup>5</sup>	4.5Moz	2H FY2023 Production <sup>6</sup>	103koz
Ore Reserve <sup>5</sup>	2.5Moz	Indicative Production <sup>2</sup>	>200koz p.a.
Processing Plant Capacity <sup>1</sup>	5.5Mtpa	Mine Life (LOM) <sup>5</sup>	~14 years

1: Processing plant has recently been operating at run-rate capacity of 5.5Mtpa, above the design capacity of 4.0Mtpa (Red 5 ASX Release: 15 September 2020).

2: Indicative production is based on the guidance range of 195koz to 215koz for FY2024.

## Darlot Summary

Mineral Resource <sup>5</sup>	1.8Moz	Plant capacity (C&M) <sup>3</sup>	1.0Mtpa
Ore Reserve <sup>5</sup>	114koz		

3: The Darlot processing plant went into care and maintenance on 28 July 2022. Darlot UG continues to be mined and trucked to KOTH.

## Royalty from the Siana Gold Mine<sup>4</sup>

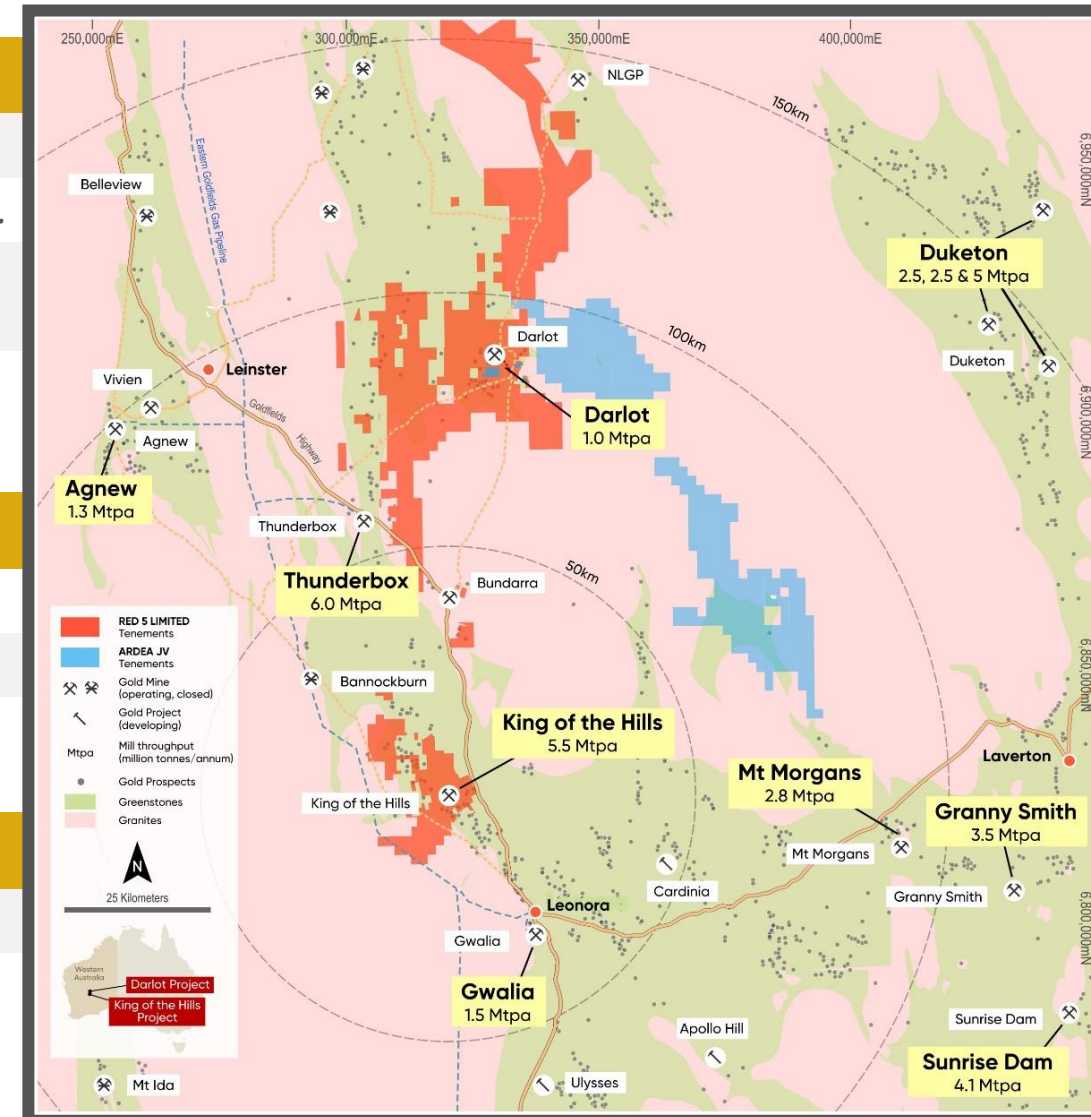
Terms<sup>7</sup> 3.25% net smelter royalty payable for up to 619koz of gold

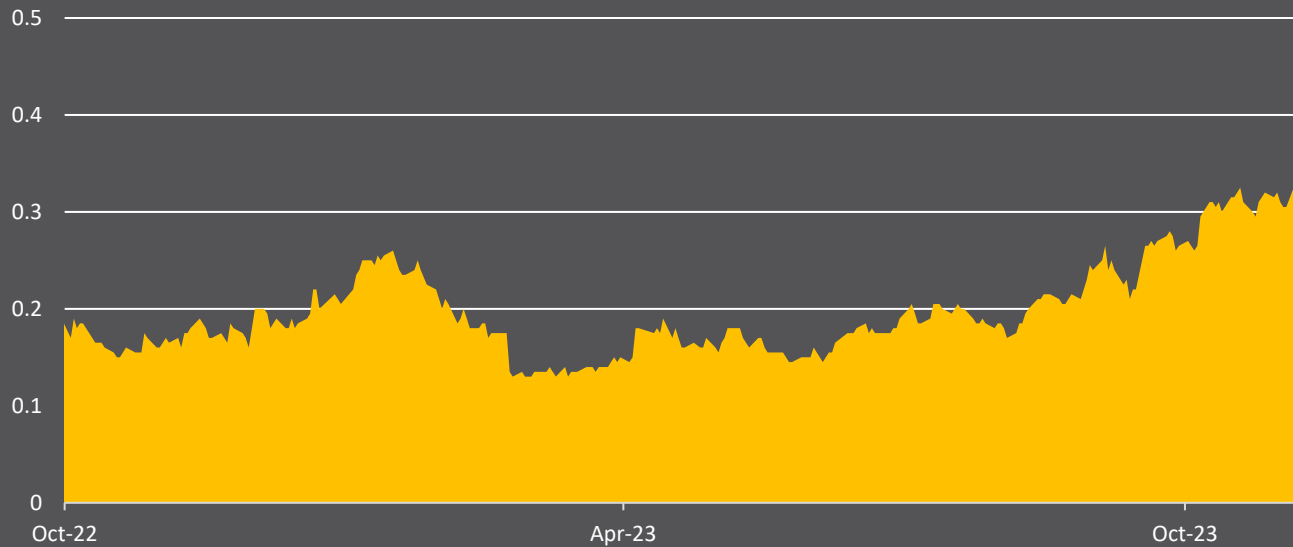
4: The Siana Gold Mine has recently restarted production under its new owners.

5. Red 5 ASX Release: 7 September 2023

7. Red 5 ASX Releases: 21 September 2021

6. Red 5 ASX Release: 5 July 2023





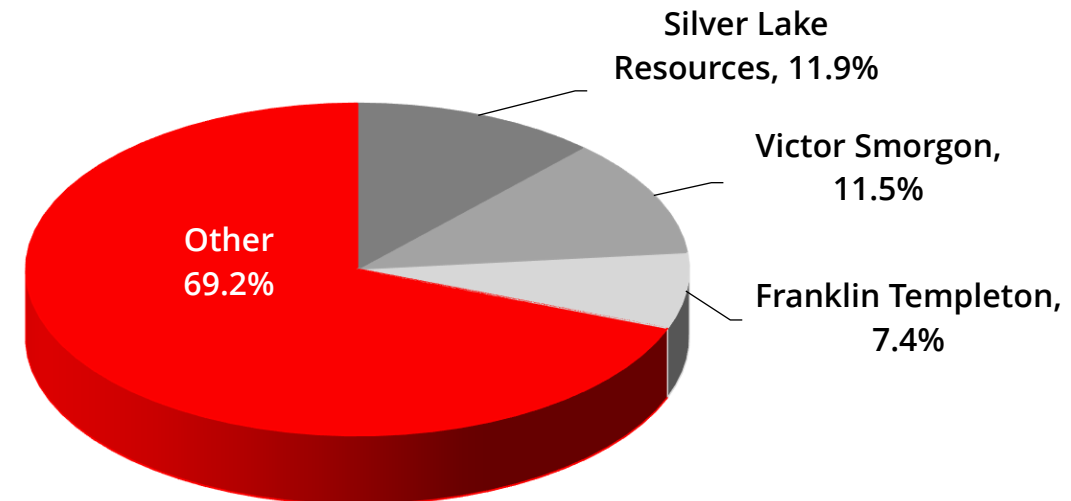
Share price at 8 Nov 2023	A\$0.335
Shares on issue at 8 Nov 2023	3,462M
Market capitalisation at 8 Nov 2023	A\$1,160M
Cash & bullion at 30 Sept 2023 <sup>1</sup>	A\$45M
Debt at 30 Sept 2023 <sup>1</sup>	A\$113M
Enterprise value at 8 Nov 2023	A\$1,228M

1. Unaudited as at 30 September 23.

## Our Company Vision

*“To be a successful multi-operational exploration and mining company, providing benefits to all stakeholders, through the consistent application of technical excellence, and responsible and sustainable industry practices.”*

## Shareholders





4 years from concept to production

Delivered a large, modern, low-cost process plant

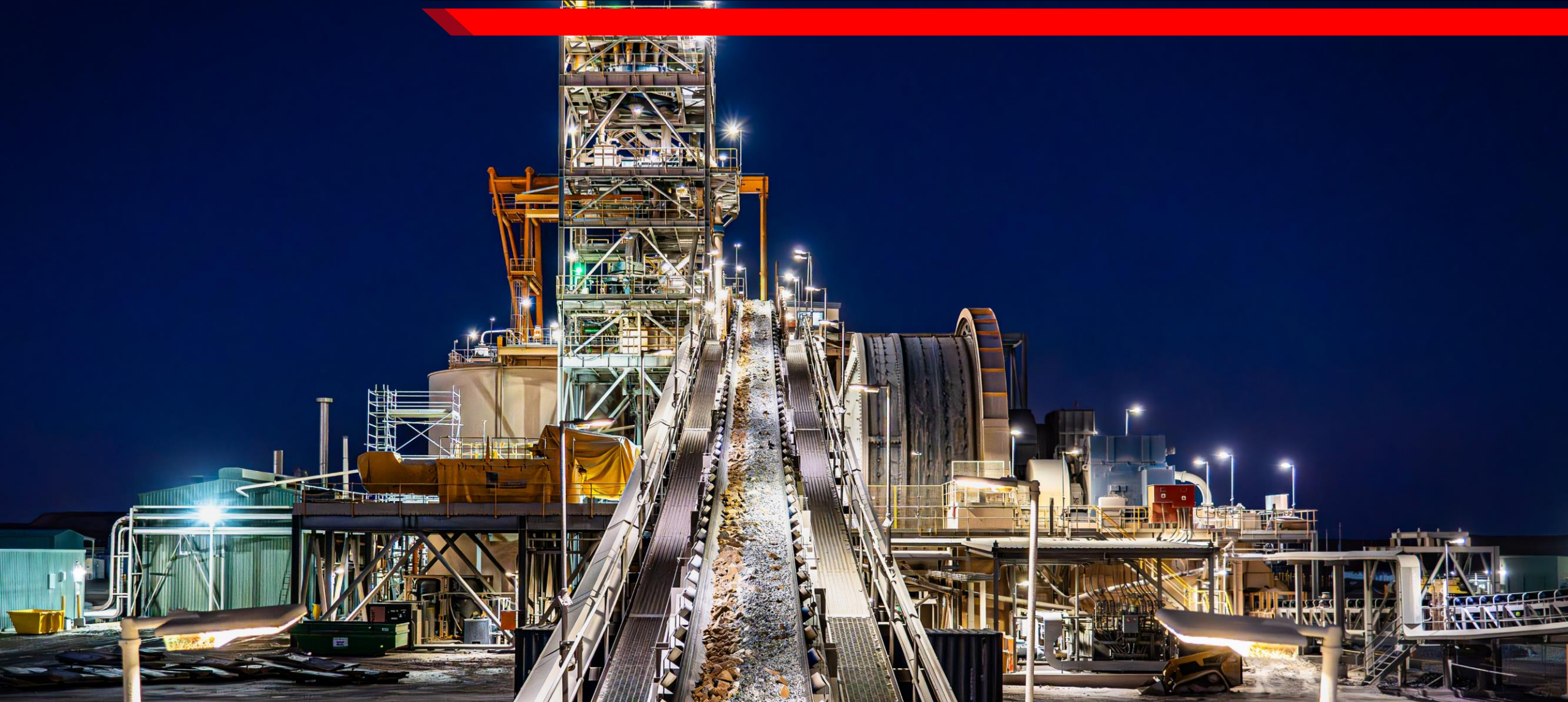
Constructed on time and on budget in 2022

FY24 guidance: 195-215koz, A\$1,850-A\$2,100/oz AISC

Delivering safe, profitable ounces and free cash flow

Accelerating repayment of debt

# SAG mill - throughput up to 5.5Mtpa (nameplate 4Mtpa)

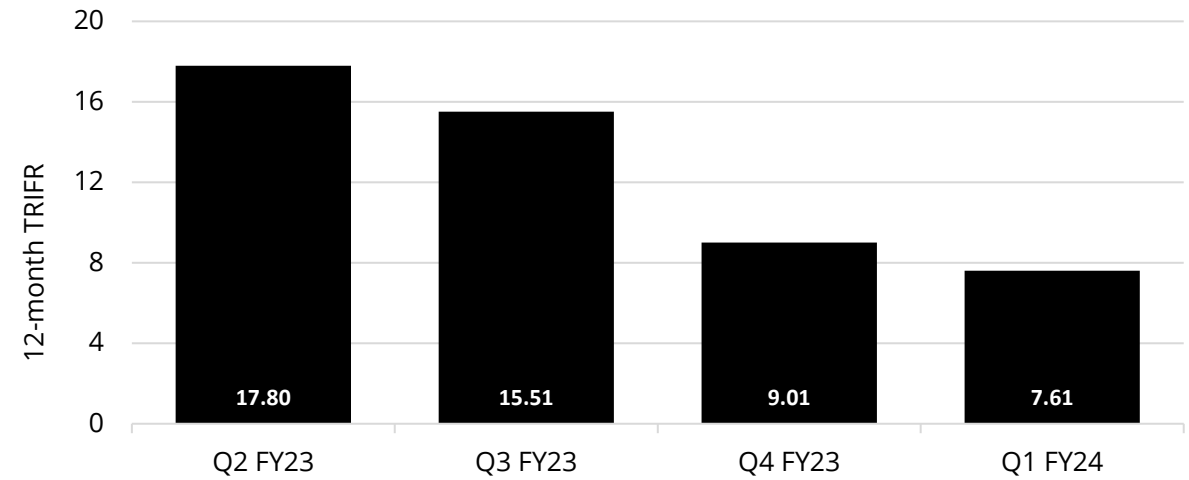


# Sept 2023 Quarter highlights

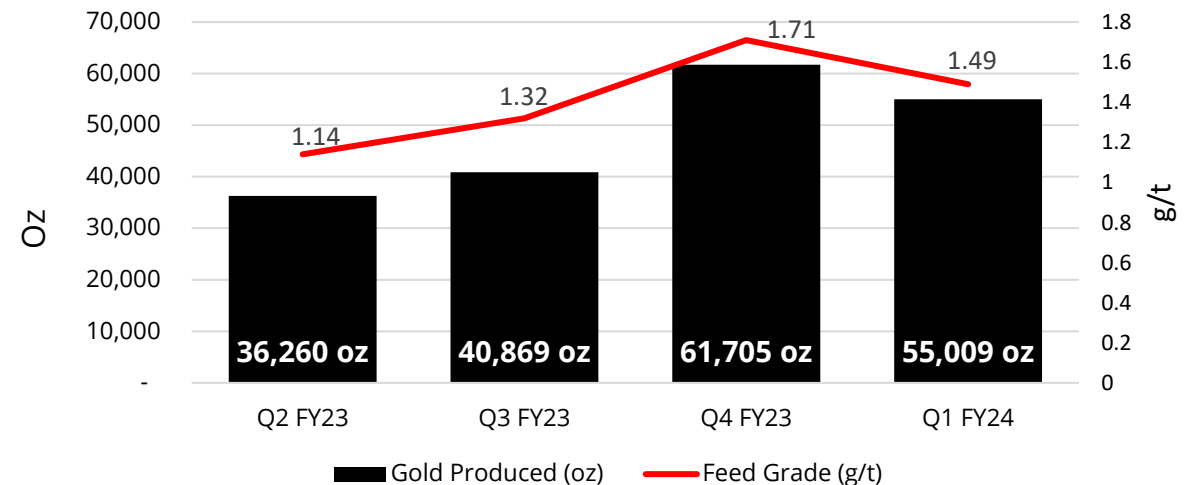


- One recordable injury for the quarter
  - *Continued safety improvement, with 12-month TRIFR reducing to 7.6 (June Quarter: 9.0)*
- 55,009oz of gold produced for Sept Quarter
  - *Sept Quarter AISC of \$1,696/oz and AIC of \$2,009/oz*
- \$44.6m cash and bullion on hand (30 Sept)
  - *Net debt position reduced by \$13.7m in Quarter*
  - *\$15.0m of Bank Debt repaid during Quarter, with \$112.8m outstanding at 30 Sept*
- **Well positioned to deliver at the top end of FY24 production guidance:**
  - *Production guidance of 195,000 – 215,000oz*
  - *AISC and growth capital guidance maintained at A\$1,850 - A\$2,100/oz and \$40m-\$46m*

## Quarterly 12-month TRIFR



## Quarterly KOTH gold production and feed grade

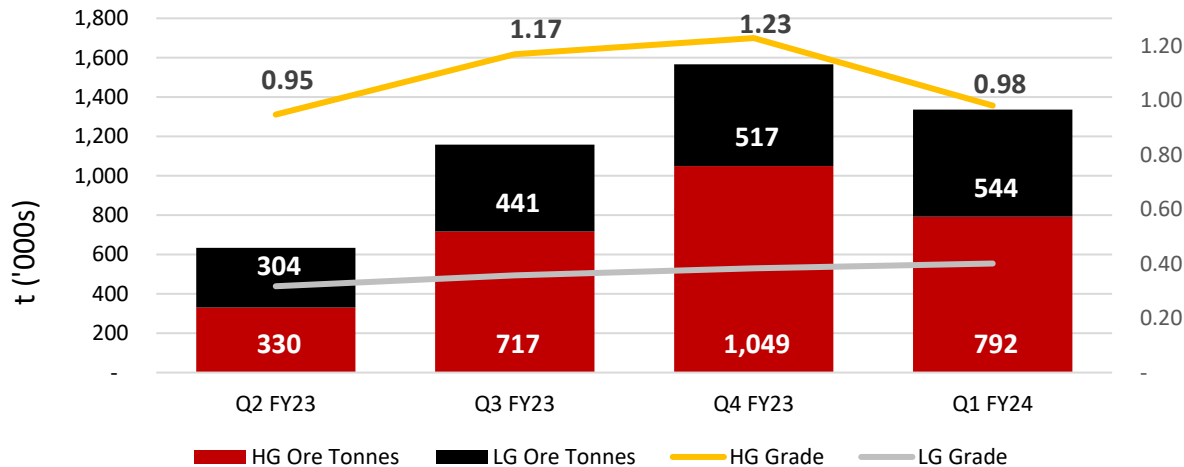


# Mining performance for Sept 2023 Quarter

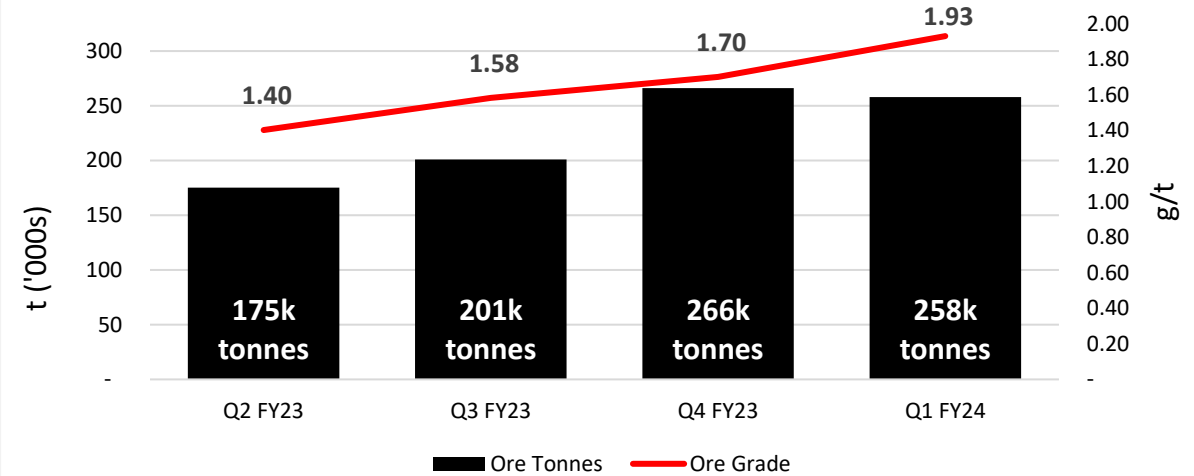


- All three mines are performing well, with operating cash flows of \$44.8m for the Quarter
- KOTH open pit HG ore reduced whilst management focused on setting up the pit for improved efficiencies
- KOTH underground continues to perform well, with grades exceeding forecast

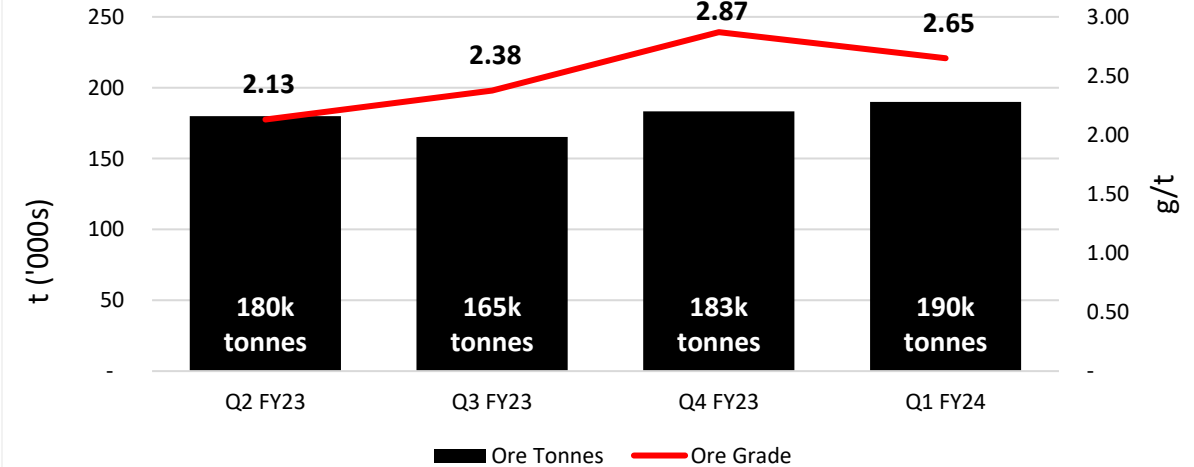
## Quarterly KOTH open pit performance



## Quarterly KOTH underground performance



## Quarterly Darlot underground performance

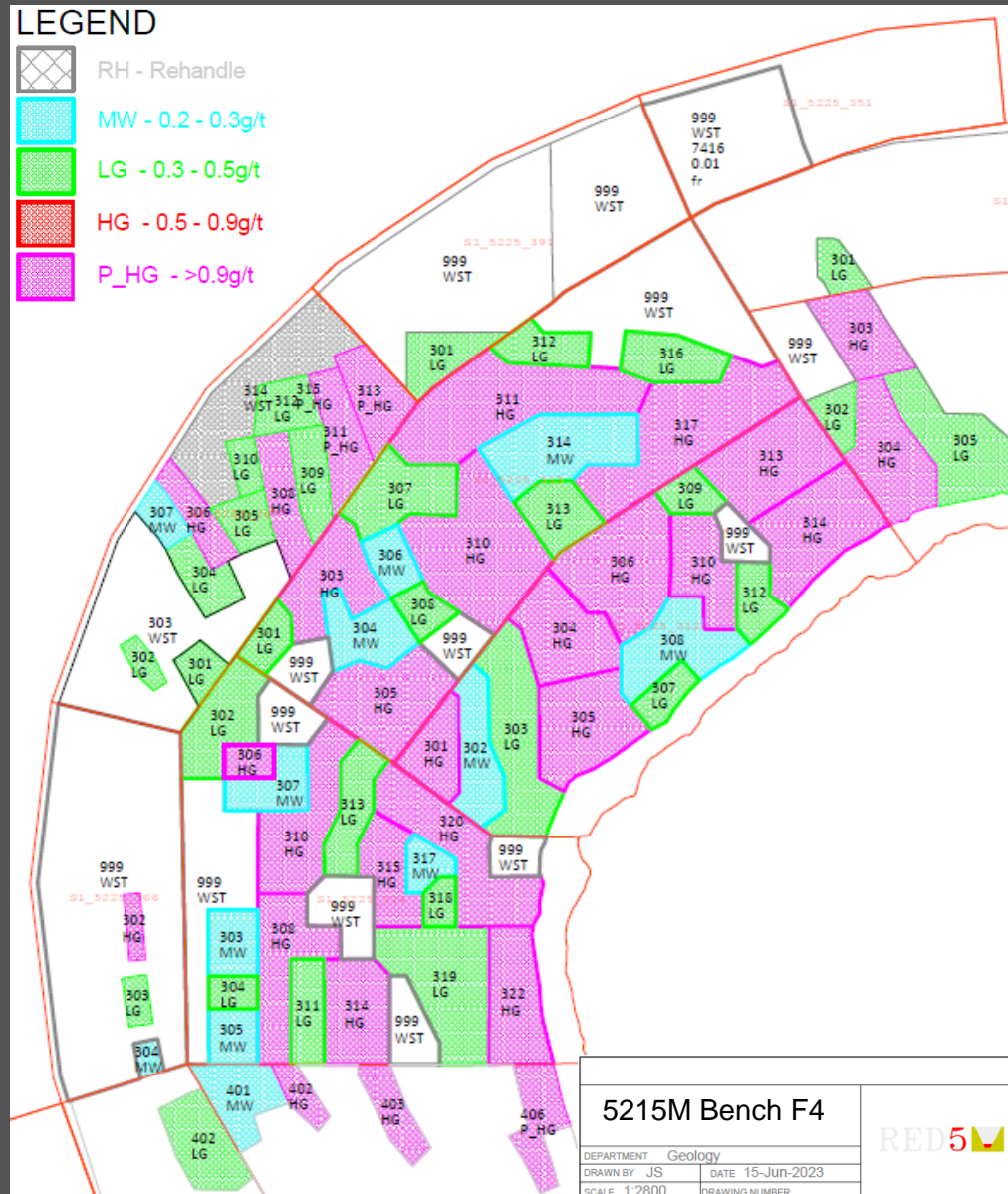




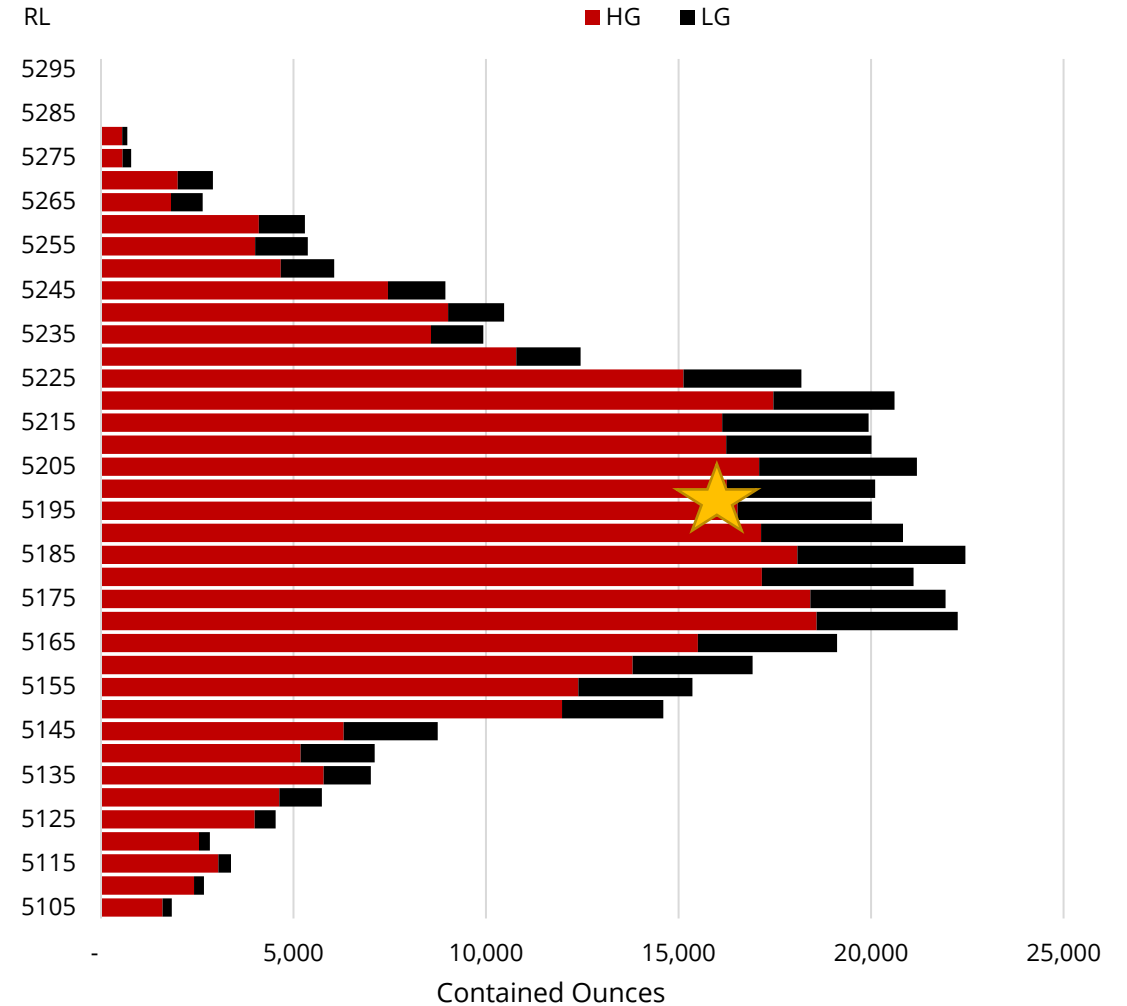
# Open pit currently mining the 5205 & 5195 mRL benches



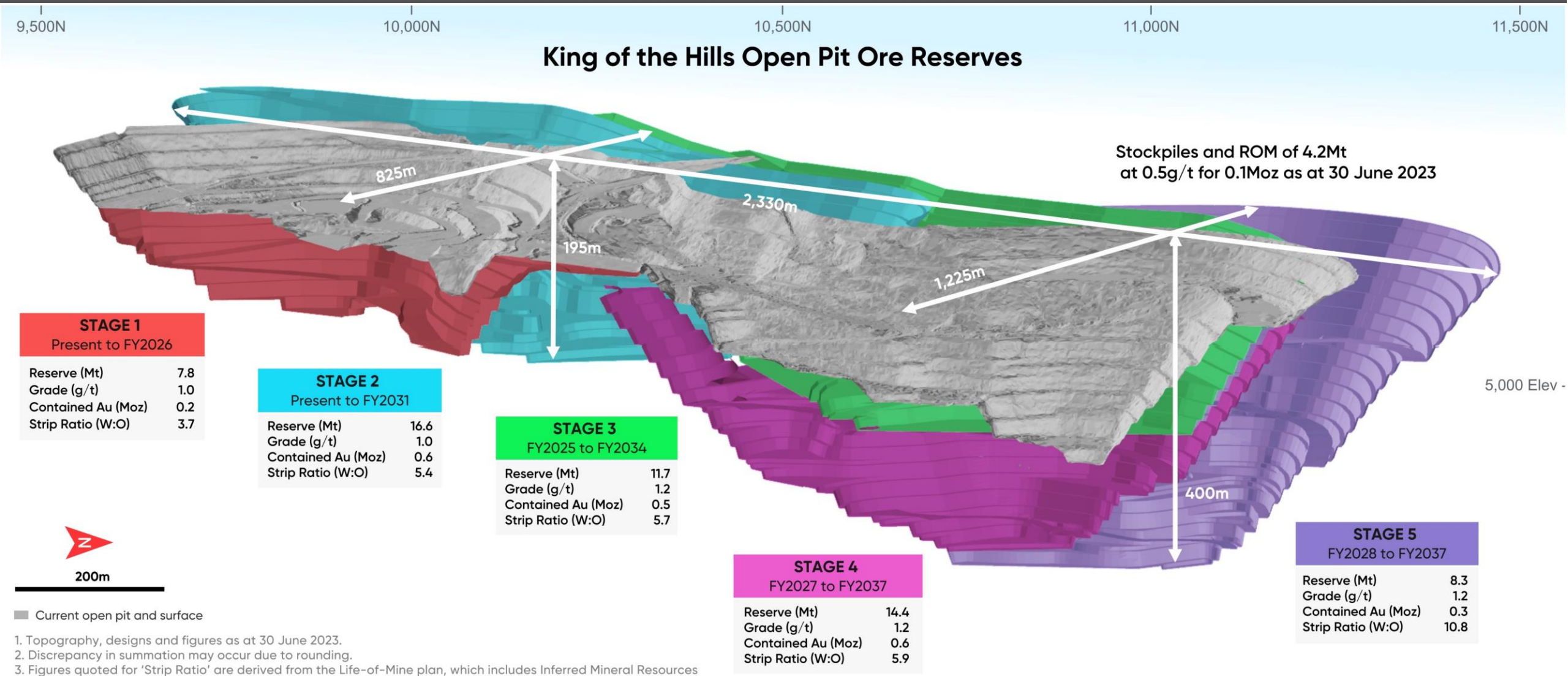
# Main ore zone provides for large, contiguous high-grade blocks



## Stage 1 KOTH open pit Ore Reserve model – contained ounces by RL



# H2 FY23 mining performance confirms long-term mine plan



1. Topography, designs and figures as at 30 June 2023.
2. Discrepancy in summation may occur due to rounding.
3. Figures quoted for 'Strip Ratio' are derived from the Life-of-Mine plan, which includes Inferred Mineral Resources

# Growth potential for KOTH mine<sup>1</sup>

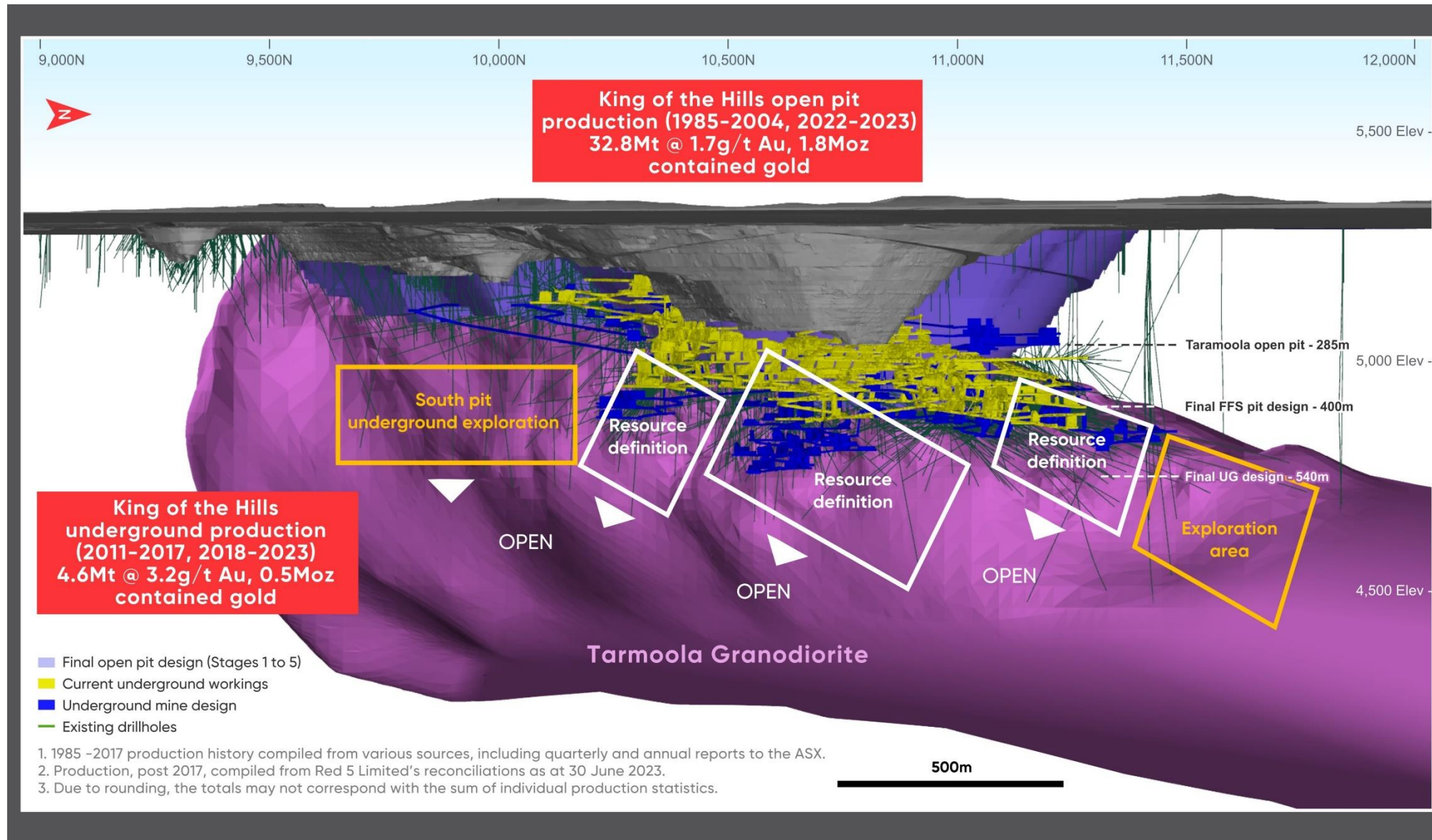


- Resource definition and grade control drilling continues to deliver high-grade assays

- 26.0m at 168.15g/t
- 16.5m at 16.50g/t
- 16.4m at 10.62g/t
- 29.5m at 5.11g/t
- 75.4m at 1.83g/t

- Grade control drilling now complete for over 85% of the FY24 mine plan

- Potential to extend along the Regal and Eastern Flanks

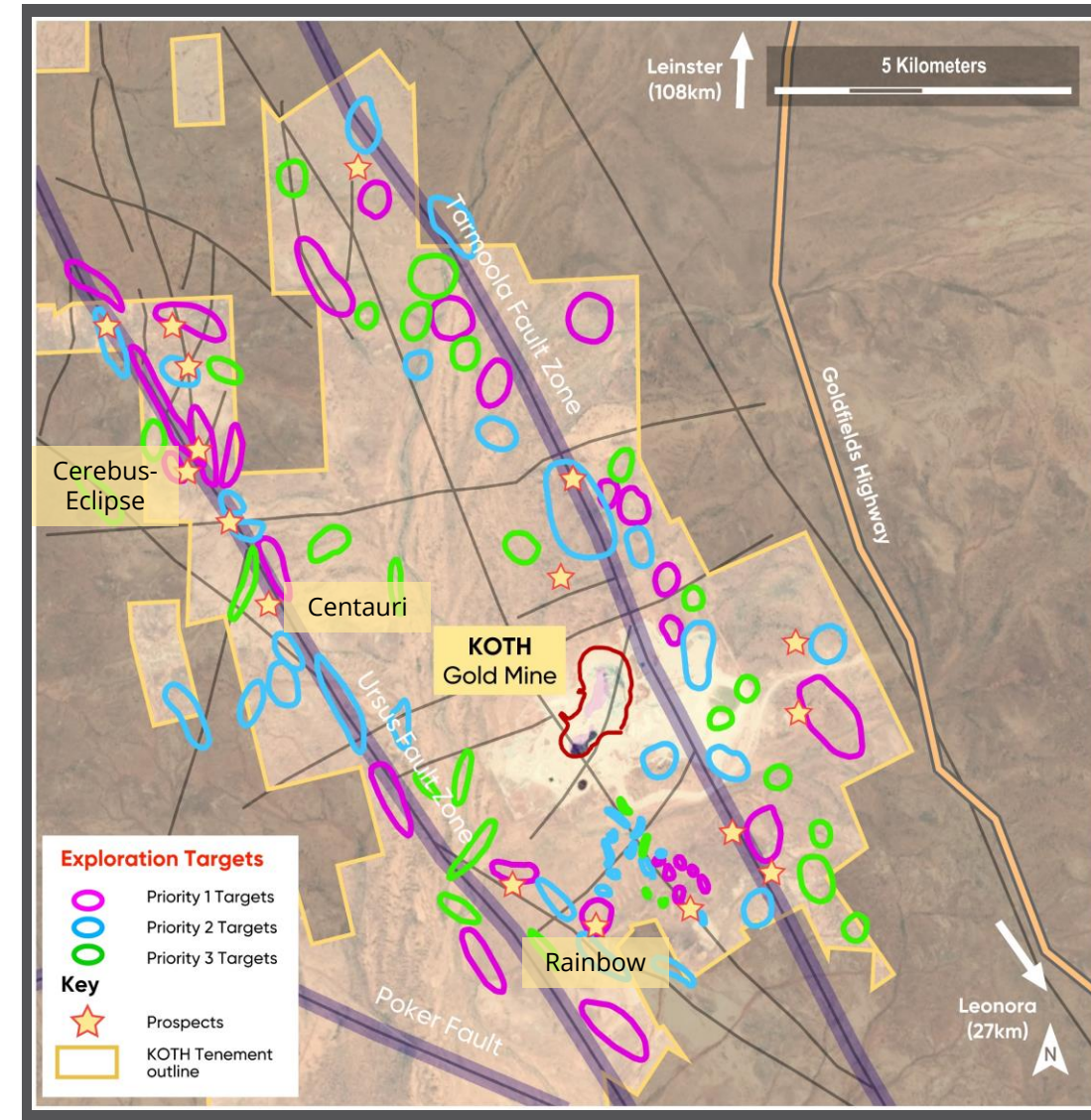


1. Red 5 ASX Release: 8 August 2023

# KOTH exploration – numerous surface targets



- Three satellite deposits are already in the LOM plan:
  - *Rainbow*
  - *Centauri*
  - *Cerebus-Eclipse*
- Integrated datasets have identified priority targets along the Tarmoola and Ursus Fault corridors
- Tarmoola Fault Corridor
  - *Poorly tested outside of the mine area*
  - *Bulk of historical AC/RAB drilling ineffective (failed to reach top of fresh rock)*
  - *10 high-priority targets defined by discrete gravity lows*
- Ursus Fault Corridor
  - *12 high-priority targets, all targeting discrete gravity lows or edges of the Raeside Batholith*
  - *Highest-priority targets where the Ursus structure splays and bends*

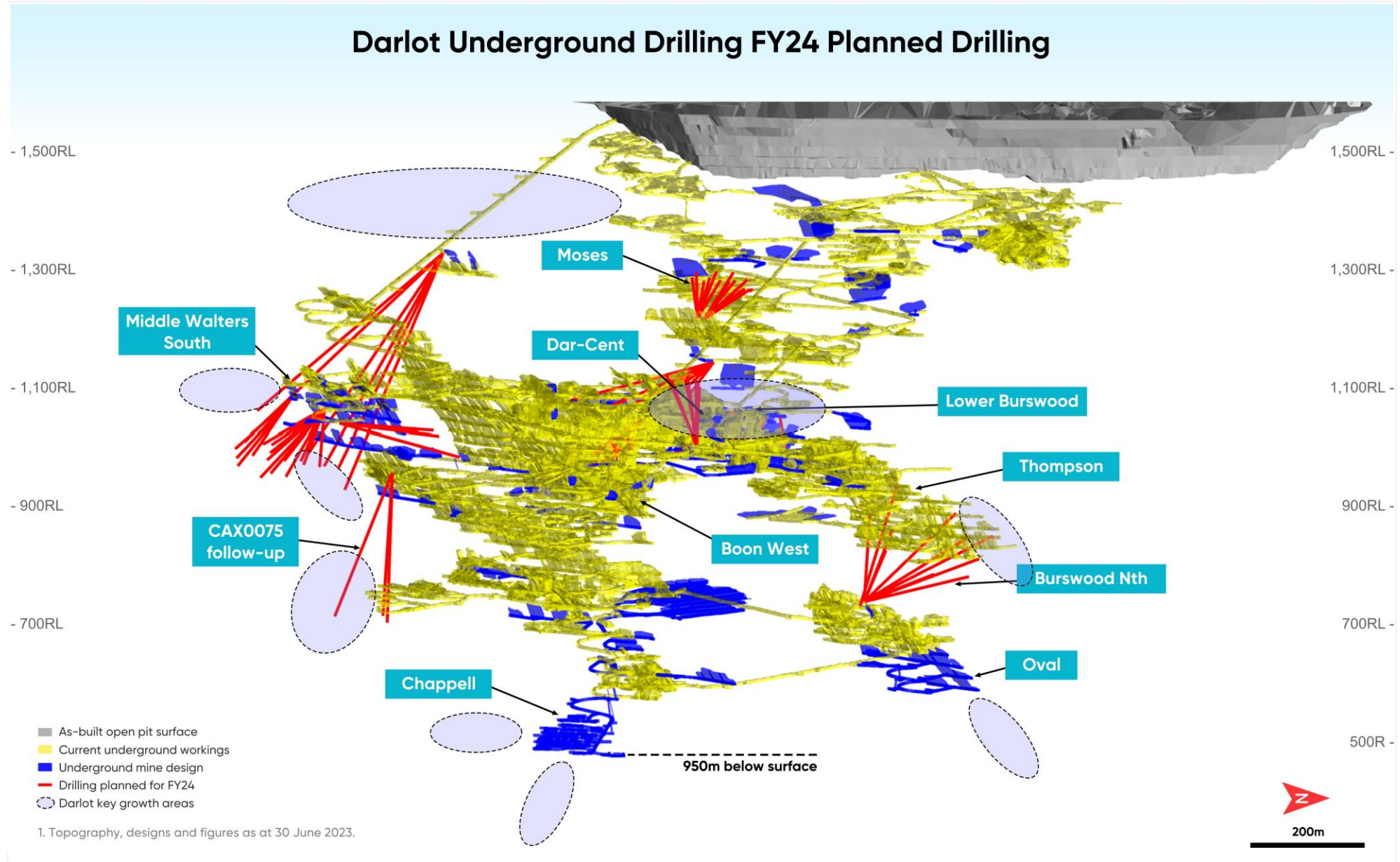


# Darlot adds value as satellite mine to KOTH



- Darlot benefiting from development investment and reduced cost base
- FY25 & 26 mine plan locked in
- Second jumbo scheduled in H2FY24
- FY24 focus on Resource conversion

- Middle Walters South<sup>1</sup>
- 4.4m at 16.0g/t
- Centurion<sup>1</sup>
- 4.6m at 30.7g/t
- Burswood<sup>1</sup>
- 1.8m at 15.0g/t
  - 2.4m at 12.5g/t



1. Topography, designs and figures as at 30 June 2023.

# “King of the Mills” in the Leonora district



- **KOTH process plant is the lowest cost mill in the Leonora district**

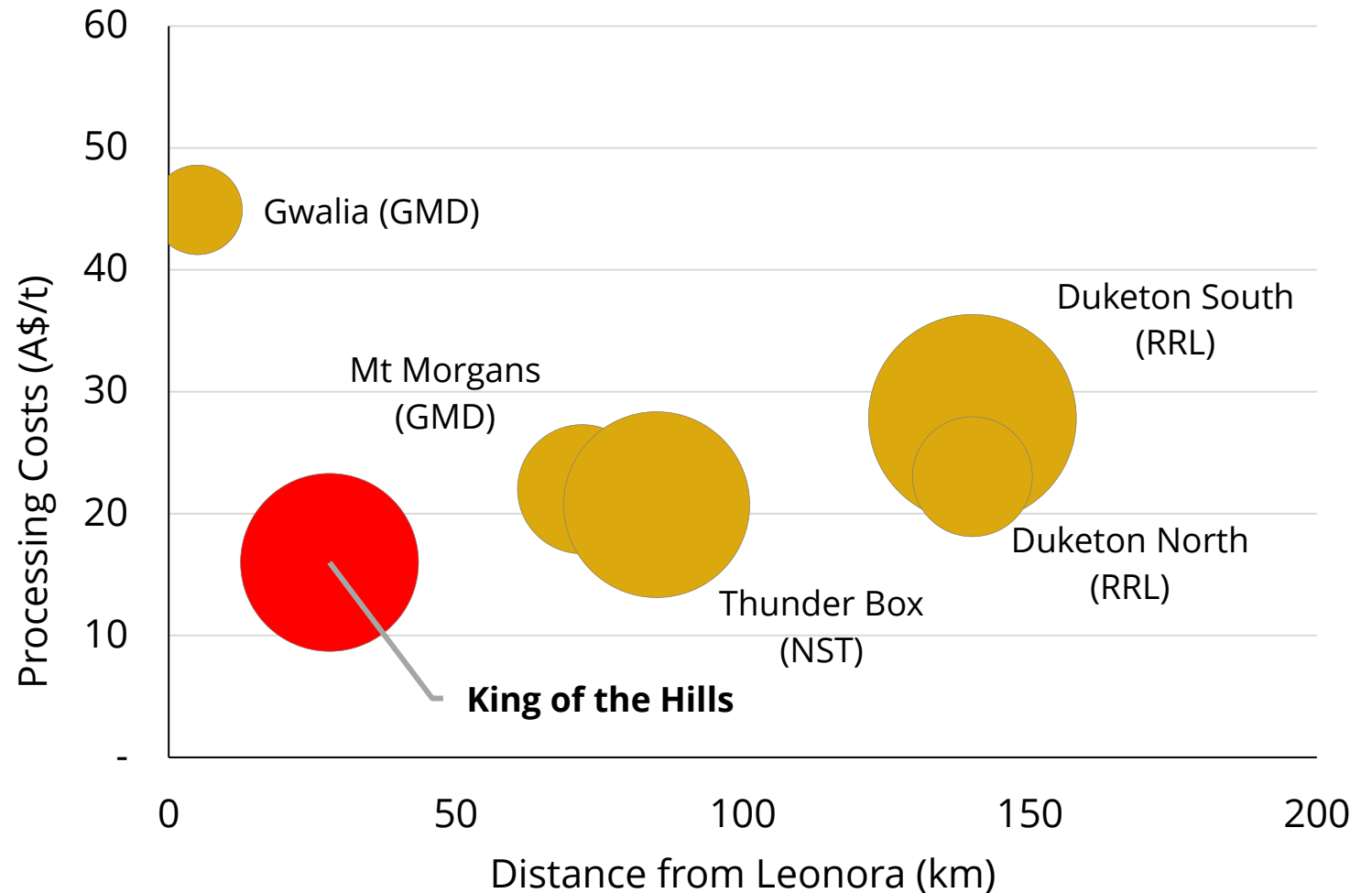
- Large mill drives site-wide economies of scale
- 30MW hybrid gas-solar power
- Operating up to 5.5Mtpa rate

- Future low-capital expansion potential

- Red 5 is evaluating optimal mill throughput expansion and options to accelerate open pit mining
- Potential for mill throughput to exceed current rates without any major capital expenditure

- **Major driver to unlock value for regional consolidation**

Regional process plants – mill size, unit cost and distance to Leonora



Bubble size (graph) = annualised mill throughput

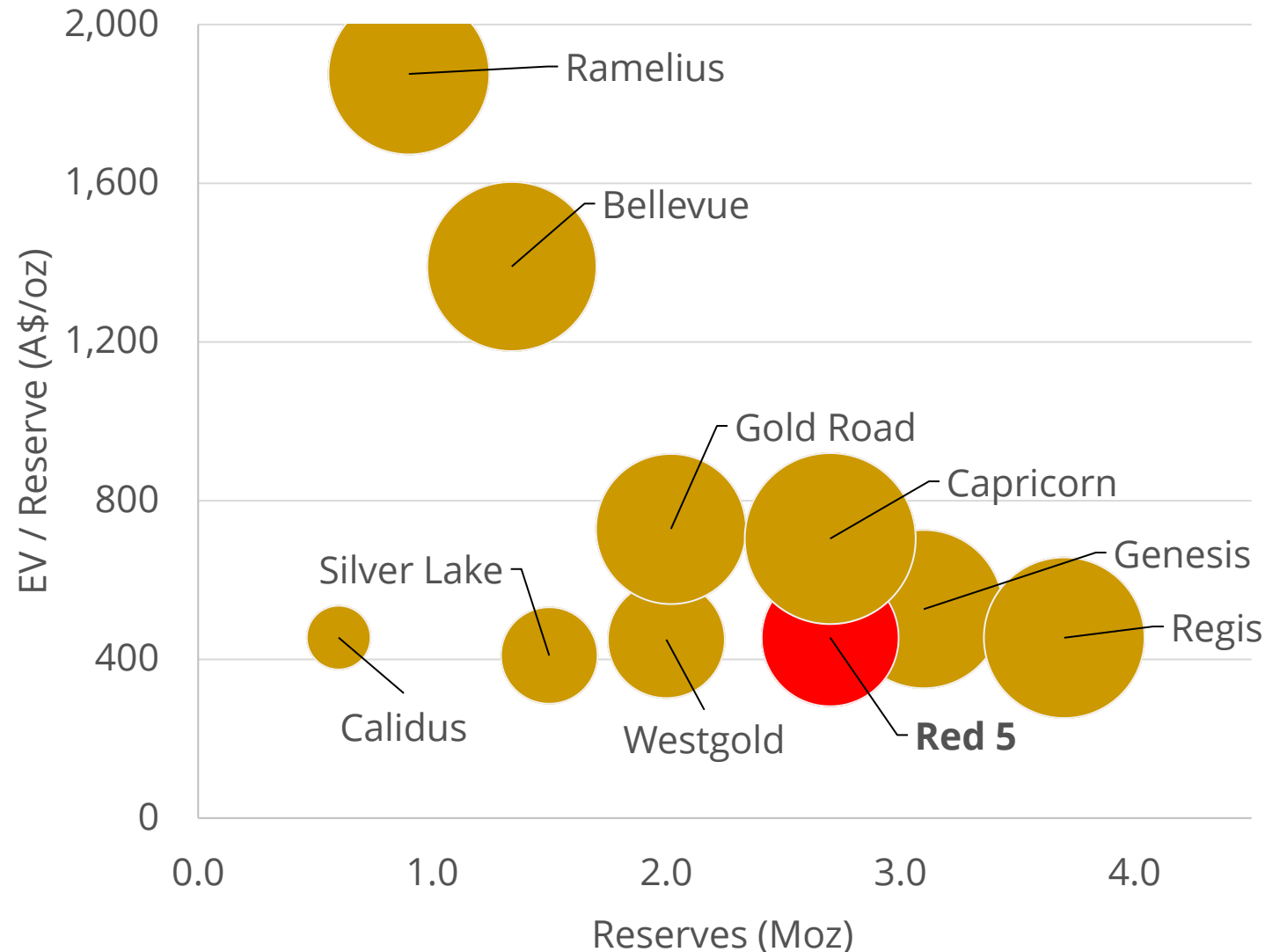
Sources: All comparative data sourced from public company disclosures

1. Red 5 ASX Release: 26 July 2023

# Standout value opportunity – de-risked steady-state operations



- Red 5 EV/Reserve relative to its peers
- Valuation of WA based-gold companies<sup>1</sup>
- Bubble size = Enterprise Value
- The new KOTH Gold Mine positions Red 5 as an emerging mid-tier Australian gold producer



Sources:  
1. S&P Capital IQ ; Goldnerds.com.au as 6 November 2023





ASX Code: RED

**RED**<sup>5</sup> Limited

**THANK YOU**



Level 2, 35 Ventnor Avenue, West Perth, Western Australia

6005 Australia



(61-8) 9322 4455



(61-8) 9481 5950





# Appendices

# Leadership Team with strong mining expertise



*Following the recent Board renewal process, Red 5 has a strong and capable Board and Executive team with many years of mining and development experience.*

## Board

**Russell Clark**  
Non-Executive Chair

Appointed Chair in Jul-2023. Mining Engineer with >40 yrs experience at Newmont, Grange Resources and Normandy Mining. Chair of CZR Resources and Pearl Gull Iron, NED of Tungsten Mining.

**Mark Williams**  
Managing Director & CEO

Mining Engineer with prior experience at Orica and Xstrata, including General Manager of US\$6bn Tampakan Copper Gold Project. MD since 2014.

**Andrea Sutton**  
Non-executive Director

Chemical Engineer with >25 yrs experience at Rio Tinto, including Chief Executive and MD at ERA. Director since Nov-2020.

**Ian Macpherson**  
Non-executive Director

Chartered Accountant with >30 yrs in the professional services industry. Specialist in capital structuring, equity and debt raising. Director since 2014.

**Peter Johnston**  
Non-executive Director

Appointed Director in Jul-2023. Global mining executive with > 35 yrs experience at Glencore, Minara Resources and WMC. Former Chair of Minerals Council of Australia.

## Management team

**Richard Hay**  
Chief Operating Officer

Geologist with 30+ years of executive and operations experience at Barrick Gold, Evolution Mining, and Gascoyne Resources.

**Patrick Duffy**  
Chief Corporate  
Development Officer

Chartered Accountant with prior experience at Glencore and Xstrata, including Director Strategy & Performance of US\$7bn Koniambo Project and CFO of US\$6bn Tampakan Project.

**Byron Dumpleton**  
Chief Geologist

Geologist with 30+ years of international experience. Prior experience at KCGM, WMC and Straits Resources.

**David Coyne**  
Chief Financial Officer

Chartered Accountant with 30+ years of senior executive experience at Spartan Resources (formerly Gascoyne), Peninsula Energy and Macmahon Holdings.

**Lisa Wynne**  
Company Secretary

Chartered Accountant with >15 years experience in Company Secretary and Chief Financial Officer roles for listed companies and not-for-profits.

# KOTH Mineral Resource of 4.5Moz<sup>1</sup>



## Total Open Pit & Underground KOTH Resource as at June 2023

Classification	Cut-off (g/t)	Mining Method	Tonnes (000t)	Gold (g/t)	Contained Gold (000oz)
Measured	0.4-1.0	OP+UG	4,092	1.1	145
Indicated	0.4-1.0	OP+UG	67,559	1.5	3,286
Inferred	0.4-1.0	OP+UG	13,630	1.5	657
<b>Total</b>	<b>0.4-1.0</b>	<b>OP+UG</b>	<b>85,282</b>	<b>1.5</b>	<b>4,087</b>
<b>KOTH JORC 2012 All material within A\$2,700 Pit Shell</b>					
Measured	0.4	OP	4,056	1.1	142
Indicated	0.4	OP	55,658	1.3	2,375
Inferred	0.4	OP	9,009	1.2	359
<b>Total</b>	<b>0.4</b>	<b>OP</b>	<b>68,722</b>	<b>1.3</b>	<b>2,876</b>
<b>KOTH JORC 2012 All material outside A\$2,700 Pit Shell</b>					
Measured	1.0	UG	37	2.3	3
Indicated	1.0	UG	11,901	2.4	911
Inferred	1.0	UG	4,622	2.0	297
<b>Total</b>	<b>1.0</b>	<b>UG</b>	<b>16,560</b>	<b>2.3</b>	<b>1,211</b>



1. Red 5 ASX Release: 7 September 2023. Total Mineral Resource of 4.5Moz includes KOTH satellite pits and stockpiles.

# KOTH Ore Reserve of 2.5Moz<sup>1</sup>



## Total KOTH Ore Reserves as at June 2023

Deposit	Mining Method	Cut-off (g/t)	JORC 2012 Classification	Tonnes (Mt)	Gold (g/t)	Contained Gold (Moz) <sup>2</sup>
KOTH	Open pit	0.4	Proved	4.6	0.8	0.1
KOTH	Open pit	0.4	Probable	54.2	1.2	2.0
KOTH	Underground	1.4	Probable	2.5	1.8	0.1
Rainbow	Open pit	0.3	Probable	2.1	0.8	0.05
Centauri	Open pit	0.3	Probable	0.3	1.2	0.01
Cerebus & Eclipse	Open pit	0.3	Probable	1.5	1.0	0.05
<b>Total</b>				<b>65.2</b>	<b>1.2</b>	<b>2.4</b>



1. Red 5 ASX Release: 7 September 2023. Total Reserve of 2.5Moz includes broken stockpiles. 2. Totals may not balance due to rounding.

# Top 20 Gold Deposits in Australia



Resources				Reserves			
	Mt	g/t	Moz		Mt	g/t	Moz
Cadia	3374	0.4	46.6	Cadia	1280	0.4	17.4
Golden Mile – KCGM	565	1.6	28.3	KCGM (100%)	286	1.3	12.2
Boddington	788	0.6	15.2	Boddington	525	0.6	10.6
Mallina Gold Project	278	1.3	11.7	Mallina Gold Project	121	1.5	6.0
Tanami	86	3.6	9.8	Tanami	33	5.4	5.7
Lake Cowal	273	1.0	8.8	Lake Cowal	130	1.0	4.3
Gruyere 100%	153	1.4	6.7	Gruyere 100%	99	1.3	4.0
Tropicana	107	1.8	6.3	St Ives	25	3.4	2.7
Gwalia	35	5.0	5.7	King of the Hills <sup>2</sup>	69	1.1	2.5
Sunrise Dam	91	1.9	5.4	Thunderbox Region	41	1.8	2.3
Jundee	60	2.8	5.4	Granny Smith	12	5.6	2.1
Mungari	98	1.7	5.3	Gwalia	13	5.1	2.1
King of the Hills <sup>1</sup>	97	1.4	4.5	Tropicana	37	1.8	2.1
Thunderbox Region	80	1.7	4.4	McPhlamys	61	1.0	2.0
Carosue Dam Region	63	2.1	4.2	Fosterville	7	8.0	1.7
Telfer	162	0.8	4.2	Jundee	13	3.6	1.5
Granny Smith	22	5.0	3.6	Carosue Dam Region	25	1.8	1.5
Bellevue	10	9.9	3.1	Bellevue	6.8	6.1	1.3
Fosterville	15	5.7	2.8	Mungari	21	1.6	1.2
McPhlamys	80	1.0	2.7	Sunrise Dam	19	1.9	1.2

1. Red 5 ASX Release: 7 September 2023

2. Red 5's KOTH Project compared with Ore Reserves for the top 10 operating mines in Australia. Red 5 ASX Release: 7 September 2023

# Australian Top 20 Gold Deposits<sup>1</sup>



	Resources				Reserves		
	Mt	g/t	Moz		Mt	g/t	Moz
<b>Cadia</b>	Newcrest						
Measured	32.0	0.30	0.3	Proven			
Indicated	2790.0	0.47	41.8	Probable	1280.0	0.42	17.4
Inferred	552.0	0.26	4.6				
Total	3374.0	0.43	46.6	Total	1280.0	0.42	17.4
<b>Telfer</b>	Newcrest						
Measured	3.3	0.41	0.0	Proven			
Indicated	138.3	0.72	3.2	Probable	26.6	0.91	0.8
Inferred	20.0	1.41	0.9				
Total	161.6	0.80	4.2	Total	26.6	0.91	0.8
Source: Newcrest Resource & Reserve release 11 Aug 2023 - Data as at 30 June 2023							
<b>Haverton</b>	Newcrest						
Measured	0.0	0.00	0.0	Proven	0.0	0.00	0.0
Indicated	40.0	3.20	4.1	Probable	20.0	3.70	2.3
Inferred	81.4	1.40	3.7				
Total	121.4	2.01	7.9	Total	20.0	3.55	2.3
Source: Newcrest Resource & Reserve release 11 Aug 2023 - Data as at 30 June 2023							
<b>Boddington</b>	Newmont						
Measured	332.2	0.64	6.9	Proven	239.4	0.7	5.2
Indicated	452.9	0.57	8.3	Probable	285.5	0.6	5.4
Inferred	2.8	0.5	0.1				
Total	787.9	0.60	15.2	Total	524.9	0.63	10.6
Source: Newmont Resource & Reserve Supplement 2022 - Data as at 31 Dec 2022							
<b>KCGM (100%)</b>	Northern Star						
Measured	119.8	0.71	2.8	Proven	119.8	0.70	2.8
Indicated	283.5	1.80	16.4	Probable	166.6	1.80	9.5
Inferred	161.3	1.77	9.2				
Total	564.7	1.56	28.3	Total	286.4	1.33	12.2
Source: Northern Star Reserve and Resource Statement 4 May 2023 - Data as at 31 March 2023							
<b>Tanami</b>	Newmont						
Measured	22.3	3.51	2.5	Proven	11.3	5.1	1.8
Indicated	50.8	3.48	5.7	Probable	21.6	5.5	3.8
Inferred	13.0	3.9	1.6				
Total	86.1	3.55	9.8	Total	32.9	5.35	5.7
Source: Newmont Resource & Reserve Supplement 2022 - Data as at 31 Dec 2022							
<b>Tropicana</b>	AngloGold/Regis Resources						
Measured	40.7	1.40	1.8	Proven	14.2	1.60	0.7
Indicated	33.6	1.80	2.0	Probable	22.5	1.90	1.4
Inferred	32.9	2.40	2.5				
Total	107.2	1.83	6.3	Total	36.7	1.78	2.1
Source: Regis Resource and Reserve Statement 23 Feb 2023 - Data as at 31 Dec 2022							
<b>Granny Smith</b>	Goldfields						
Measured	2.5	4.90	0.4	Proven	1.8	5.60	0.3
Indicated	10.7	4.60	1.6	Probable	9.9	5.60	1.8
Inferred	9.1	5.50	1.6				
Total	22.3	4.96	3.6	Total	11.8	5.60	2.1
Source: Goldfields 2022 Resource & Reserve Supplement - Data as at 31 Dec 2022							
<b>Gruyere 100%</b>	Goldfields/Gold Road						
Measured	20.0	1.08	0.7	Proven	19.8	1.06	0.7
Indicated	103.3	1.38	4.6	Probable	79.0	1.33	3.4
Inferred	29.5	1.48	1.4				
Total	152.7	1.36	6.7	Total	98.8	1.27	4.0
Source: Gold Road 2022 Resource & Reserve Supplement - Data as at 31 Dec 2022							

	Resources				Reserves		
	Mt	g/t	Moz		Mt	g/t	Moz
<b>St Ives</b>	Goldfields						
Measured	0.9	3.30	0.1	Proven	5.9	2.60	0.5
Indicated	9.4	2.90	0.9	Probable	18.7	3.70	2.2
Inferred	11.3	3.90	1.4				
Total	21.6	3.45	2.4	Total	24.6	3.40	2.7
Source: Goldfields 2022 Resource & Reserve Supplement - Data as at 31 Dec 2022							
<b>Agnew/EMU</b>	Goldfields						
Measured	0.1	5.60	0.0	Proven	0.0	8.20	0.0
Indicated	5.3	5.00	0.9	Probable	5.3	6.50	1.1
Inferred	4.0	4.70	0.6				
Total	9.5	4.87	1.5	Total	5.3	6.46	1.1
Source: Goldfields 2022 Resource & Reserve Supplement - Data as at 31 Dec 2022							
<b>Lake Cowal</b>	Evolution						
Measured	29.5	0.5	0.4	Proven	27.4	0.5	0.4
Indicated	204.9	1.0	6.8	Probable	102.1	1.2	3.9
Inferred	38.8	1.3	1.6				
Total	273.3	1.01	8.8	Total	129.5	1.04	4.3
Source: Evolution 2023 Resource & Reserve - Data as at 31 Dec 2022							
<b>Mungari</b>	Evolution						
Measured	1.4	4.7	0.2	Proven	0.4	5.5	0.1
Indicated	63.5	1.6	3.2	Probable	23.9	1.5	1.2
Inferred	32.7	1.8	1.9				
Total	97.5	1.7	5.3	Total	21.3	1.58	1.2
Source: Evolution 2023 Resource & Reserve - Data as at 31 Dec 2022							
<b>Duketon Region</b>	Regis						
Measured	21.0	0.80	0.6	Proven	12.0	0.60	0.2
Indicated	32.0	1.20	1.3	Probable	14.0	1.60	0.7
Inferred	12.0	1.60	0.6				
Total	65.0	1.20	2.5	Total	26.0	1.10	1.0
Source: Regis Resource & Reserve Statement 20 June 2023 - Data as at 31 Dec 2022							
<b>McPhlamys</b>	Regis						
Measured				Proven			
Indicated	77.0	1.10	2.6	Probable	61.0	1.03	2.0
Inferred	3.0	0.80	0.1				
Total	80.0	1.05	2.7	Total	61.0	1.03	2.0
Source: Regis Resource & Reserve Statement 20 June 2023 - Data as at 31 Dec 2022							
<b>Carosue Dam Region</b>	Northern Star						
Measured	16.1	1.90	1.0	Proven	12.6	1.80	0.7
Indicated	30.3	2.10	2.1	Probable	12.2	1.90	0.7
Inferred	16.9	2.20	1.0				
Total	63.3	2.10	4.2	Total	24.9	1.85	1.5
Source: Northern Star Reserve and Resource Statement 4 May 2023 - Data as at 31 March 2023							
<b>Thunderbox Region</b>	Northern Star						
Measured	20.0	1.50	1.0	Proven	12.2	1.50	0.6
Indicated	49.8	1.80	2.9	Probable	29.0	1.80	1.7
Inferred	9.9	1.60	0.5				
Total	79.7	1.72	4.4	Total	41.2	1.75	2.3
Source: Northern Star Reserve and Resource Statement 4 May 2023 - Data as at 31 March 2023							
<b>Mallina Gold Project</b>	De Grey						
Measured	4.7	1.70	0.3	Proven	0.0	0.00	0.0
Indicated	184.1	1.30	7.8	Probable	120.8	1.55	6.0
Inferred	89.2	1.30	3.7				
Total	278.0	1.30	11.7	Total	120.8	1.55	6.0
Source: De Grey Reserve and Resource release 15 June 2023 - Data as at September 2023							

	Resources				Reserves		
	Mt	g/t	Moz		Mt	g/t	Moz
<b>Sunrise Dam</b>	AngloGold Ashanti						
Measured	20.3	1.64	1.1	Proven	12.0	1.50	0.6
Indicated	26.1	1.59	1.3	Probable	6.6	2.71	0.6
Inferred	44.6	2.11	3.0				
Total	91.1	1.86	5.4	Total	18.6	1.94	1.2
Source: AngloGold Resource & Reserve Supplement 2022 - Data as at 31 Dec 2022							
<b>Gwalia</b>	Genesis						
Measured	6.0	4.50	0.9	Proven	1.5	7.30	0.4
Indicated	26.4	4.99	4.2	Probable	11.3	4.80	1.8
Inferred	3.1	6.16	0.6				
Total	35.5	5.01	5.7	Total	12.9	5.10	2.1
Source: Genesis Reserve & Resource Statement 3 July 2023							
<b>Jundee</b>	Genesis						
Measured	2.4	1.20	0.1	Proven	2.4	1.20	0.1
Indicated	41.8	2.90	3.9	Probable	10.9	4.10	1.4
Inferred	16.3	2.50	1.3				
Total	60.5	2.76	5.4	Total	13.3	3.56	1.5
Source: Northern Star Reserve and Resource Statement 4 May 2023 - Data as at 31 March 2023							
<b>Kanowna</b>	Genesis						
Measured	5.9	3.30	0.6	Proven	3.0	2.70	0.3
Indicated	29.7	2.00	1.9	Probable	6.0	2.40	0.5
Inferred	33.3	1.60	1.8				
Total	68.8	1.93	4.3	Total	9.0	2.52	0.7
Source: Northern Star Reserve and Resource Statement 4 May 2023 - Data as at 31 March 2023							
<b>Big Bell</b>	Westgold						
Measured	6.5	3.08	0.5	Proven	3.6	2.85	0.3
Indicated	9.9	3.23	1.0	Probable	6.3	3.31	0.7
Inferred	8.9	2.73	0.8				
Total	24.4	3.01	2.4	Total	9.8	3.14	1.0
Source: Westgold Resource & Reserve Release 11 September 2023 - Data as at 30 Jun 2023							
<b>Fosterville</b>	Agnico Eagle						
Measured	1.1	3.67	0.1	Proven	0.6	23.19	0.5
Indicated	9.7	5.18	1.6	Probable	6.0	6.39	1.2
Inferred	5.6	6.53	1.2				
Total	15.4	5.67	2.8	Total	6.6	7.95	1.7
Source: Agnico Eagle Limited 31 December 2022							
<b>King of the Hills</b>	Red 5						
Measured	6.7	0.88	0.2	Proven	7.2	0.80	0.2
Indicated	74.7	1.48	3.6	Probable	62.3	1.20	2.3
Inferred	15.2	1.48	0.7				
Total	96.5	1.44	4.46	Total	69.5	1.10	2.5
Source: Red 5 Resource and Reserve Statement, 7 Sept 2023, Resource update 30 June 2023							

1. Sources detailed in the table



ASX Code: RED

# RED 5 Limited

## THANK YOU



Level 2, 35 Ventnor Avenue, West Perth, Western Australia  
6005 Australia



(61-8) 9322 4455



(61-8) 9481 5950

