



TGMETALS

LAKE JOHNSTON PROJECT LITHIUM PEGMATITE DISCOVERY

LITHIUM | NICKEL | GOLD

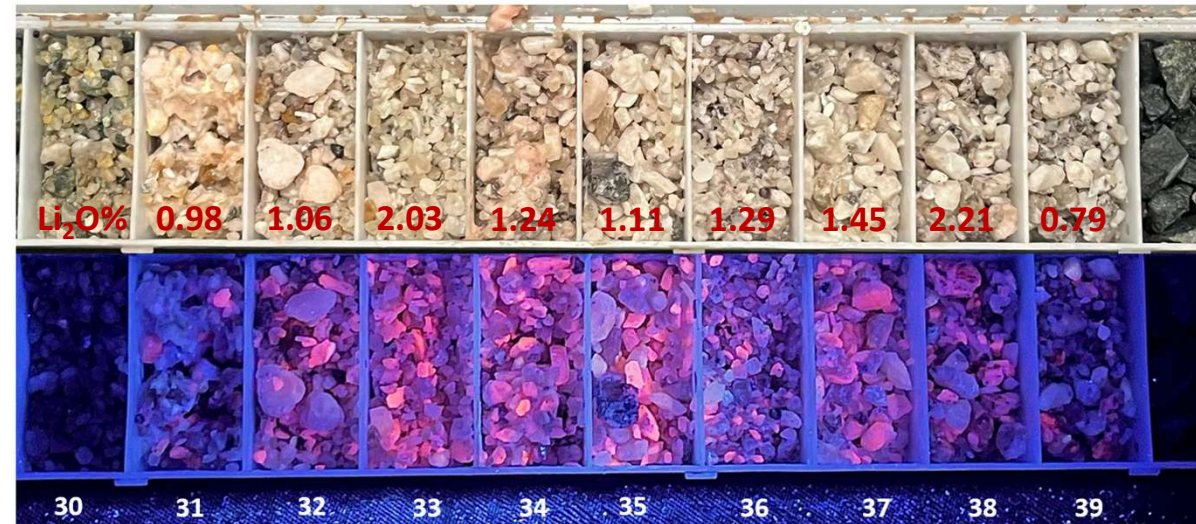
R I U R E S U R G E N C E C O N F E R E N C E

N O V E M B E R 2 0 2 3

ASX:TG6 | tgmets.com.au

High Grade Lithium Pegmatite Discovery

TGRC0006



TG Metals Limited is a Perth-based exploration company listed on the ASX. The Company is exploring and developing its recent high grade spodumene lithium pegmatite discovery at the **Burmeister Prospect** on its wholly owned exploration properties located in the **Lake Johnston Greenstone Belt of Western Australia.**

Disclaimer

This presentation has been prepared by TG Metals Limited. The information contained in this presentation is not investment or financial product advice and is not intended to be used as the basis for making an investment decision. The presentation has been prepared without taking into account the investment objectives, financial situation or particular needs of any particular person. No representation or warranty, express or implied, is made as to the fairness, accuracy, completeness or correctness of the information, opinions and conclusions contained in this presentation. To the maximum extent permitted by law, none of TG Metals Limited, its directors, employees or agents, not any other person accepts any liability, including, without limitation, any liability arising out of fault of negligence, for any loss arising from the use of the information contained in this presentation. In particular, no representation or warranty, express or implied is given as the accuracy, completeness or correctness, likelihood of achievement or reasonableness or any forecasts, prospects or returns contained in this presentation nor is any obligation assumed to update such information. Such forecasts, prospects or returns are by their nature subject to significant uncertainties and contingencies. No representation is made that, in relation to the tenements the subject of this presentation, TG Metals has now or will at any time in the future develop further resources or reserves within the meaning of the Australian Code for Reporting of Exploration Results, Mineral resources and Ore Reserves (The JORC Code).

Before making an investment decision, you should consider, with or without the assistance of a financial adviser, whether an investment is appropriate in light of your particular investment needs, objectives and financial circumstances. You should have consideration to the risks involved in investment in TG Metals Limited. By accepting this presentation, the recipient represents and warrants that it is a person to whom this presentation may be delivered or distributed without a violation of the laws of any jurisdiction.

This presentation is not to be disclosed to any other person or used for any other purpose and any other person who receives this presentation should not rely or act upon it. Information contained in this presentation is confidential information and the property of TG Metals Limited. It is made available strictly for the purposes referred to above. The presentation and any further confidential information made available to any recipient must be held in complete confidence and documents containing such information may not be reproduced, used or disclosed with the prior written consent of TG Metals Limited.

The material contained in this presentation does not constitute or contain an offer or invitation to subscribe for or purchase any securities in TG Metals nor does it constitute an inducement to make an offer or invitation with respect to those securities. No agreement to subscribe for or purchase securities in TG Metals will be entered into on the basis of this presentation.

Competent Persons Statement

Information in this presentation that relates to exploration results, exploration targets, geology, drilling and mineralisation is based on information compiled by Mr David Selfe who is a Fellow of the Australasian Institute of Mining and Metallurgy. Mr Selfe has sufficient experience that is relevant to the style of mineralization and type of deposit under consideration and to the activities that he is undertaking to qualify as a Competent Person as defined in the 2012 Edition of the Australasian Code for Reporting of Exploration Results, Mineral Resources and Ore Reserves. Mr Selfe has consented to the inclusion in this presentation of matters based on their information in the form and context in which it appears.

Forward looking statements

This presentation contains certain statements that may constitute “forward looking statement”. Such statements are only predictions and are subject to inherent risks and uncertainties, which could cause actual values, results, performance achievements to differ materially from those expressed, implied or projected in any forward looking statements.

Forward-looking statements are statements that are not historical facts. Words such as “expect(s)”, “feel(s)”, “believe(s)”, “will”, “may”, “anticipate(s)” and similar expressions are intended to identify forward-looking statements. These statements include, but are not limited to statements regarding future production, resources or reserves and exploration results. All such statements are subject to certain risks and uncertainties, many of which are difficult to predict and generally beyond the control of the Company, that could cause actual results to differ materially from those expressed in, or implied or projected by, the forward-looking information and statements. These risks and uncertainties include, but are not limited to: (i) those relating to the interpretation of drill results, the geology, grade and continuity of mineral deposits and conclusions of economic evaluations, (ii) risks relating to possible variations in reserves, grade, planned mining dilution and ore loss, or recovery rates and changes in project parameters as plans continue to be refined, (iii) the potential for delays in exploration or development activities or the completion of feasibility studies, (iv) risks related to commodity price and foreign exchange rate fluctuations, (v) risks related to failure to obtain adequate financing on a timely basis and on acceptable terms or delays in obtaining governmental approvals or in the completion of development or construction activities, and (vi) other risks and uncertainties related to the Company’s prospects, properties and business strategy. Our audience is cautioned not to place undue reliance on these forward-looking statements that speak only as of the date hereof, and we do not undertake any obligation to revise and disseminate forward-looking statements to reflect events or circumstances after the date hereof, or to reflect the occurrence of or non-occurrence of any events.

The Company believes that it has a reasonable basis for making the forward-looking Statements in the presentation based on the information contained in this and previous ASX announcements.

The Company is not aware of any new information or data that materially affects the information included in this ASX release, and the Company confirms that, to the best of its knowledge, all material assumptions and technical parameters underpinning the exploration results in this release continue to apply and have not materially changed.

Project Summary

TG Metals Limited is exploring for **lithium, nickel and gold** in the Lake Johnston Greenstone Belt of Western Australia

- The Lake Johnston Project is located ~300 km from Kalgoorlie in the Goldfields region of Western Australia
- The tenure covers +50 km strike of Lake Johnston Greenstone Belt, which consolidates the southern region for the first time
- Total tenement area of 356 km²
- New LCT pegmatites discovery in previously under explored region



Corporate Overview

CAPITAL STRUCTURE

| | |
|---|---------|
| Current shares on issue | 57.7M |
| Cash (as at 30 September 2023) | \$3.23M |
| Market Cap (Closing price 20/11/23 of \$0.92/share) | \$53.1M |
| Unlisted Options* | 14.59M |
| Performance Rights** | 5.1M |
| Enterprise Value | \$49.8M |

^Including 17m shares escrowed

* 7.86m Vendor & Seed options: 3 year expiry, \$0.20 and \$0.25 exercise

* 3m Director & Management options: 5 year expiry, \$0.30 exercise

* 3.225m Broker options: 30 June 2024 expiry, \$0.30 exercise

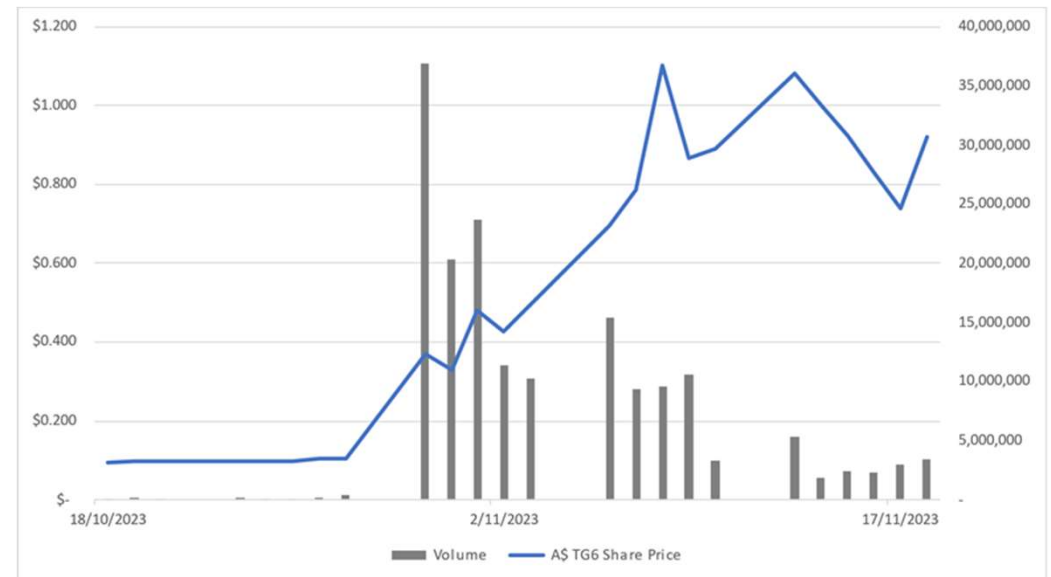
* 0.5m Corporate Advisor Options: 31 Oct 2024 expiry, \$0.30 exercise

** Various VWAP based incentive milestones (starting from 20 day VWAP exceeding \$0.40)

SHAREHOLDER COMPOSITION

| | |
|------------------------|-------|
| Top 50 Shareholders | 62% |
| Directors & Management | 6.53% |

SHARE PRICE PERFORMANCE (1 Month)



Board and Management

Experienced in exploration, project development, corporate, funding, M&A and offtake in the Resources sector



Mr Richard Bevan
Non Executive Chairman
B App Sc, MAICD

Richard has corporate and senior management experience including various directorships and CEO/MD roles in ASX listed and private companies, including most recently being the founding Managing Director of Cassini Resources Limited. He has been involved in a number of businesses in areas as diverse as healthcare, construction and engineering, resources and information services.

He is Non-executive Chair of Killi Resources Ltd (ASX:KLI) and Narryer Metals Ltd (ASX:NYM) and Non-executive director of Elmore Ltd (ASX:ELE).



Mr David Selfe
Chief Executive Officer
BSc Mineral Exploration and Mining Geology WA School of Mines, FAusIMM

David is an executive level geologist with experience in lateritic and sulphide nickel deposits, and base metals including copper-gold and copper-cobalt with ore estimation and grade control expertise. David also has experience in management of exploration programs for a mid tier resources companies, including establishment of grade control, reconciliation, ore resource, mining and exploration strategies for gold, lateritic nickel and copper projects and mergers and acquisitions.



Mr Brett Smith
Non Executive Director
BSc Hons Geology, MAusIMM, MAIG, MAICD

Brett is a geologist with a global experience of +30 years in a variety of commodities, as well as +20 years in investor engagement and corporate management of private and ASX listed companies including Managing Director of Corazon Mining Ltd (ASX:CZN) and Non-executive Director of Aruma Resources Ltd (ASX:AAJ). He has a technical focus on project generation, exploration and resource definition.



Ms Gloria Zhang
Non Executive Director
Qualifications: BCom Marketing & Management, MBA, MAICD

Gloria has 25+ years' experience in international business, banking, project management and marketing. She works as an international business advisor for several major ASX-listed companies, and is instrumental in capital raising, offtake negotiation and joint venture management. She was once held a senior management role in a Chinese mining company's Australian operation. Gloria is a Graduate Member of the Australian Institute of Company Directors. She is currently the Chairperson of The Australian Association of International Business and Managing Director of Intlang Corporate Consulting.



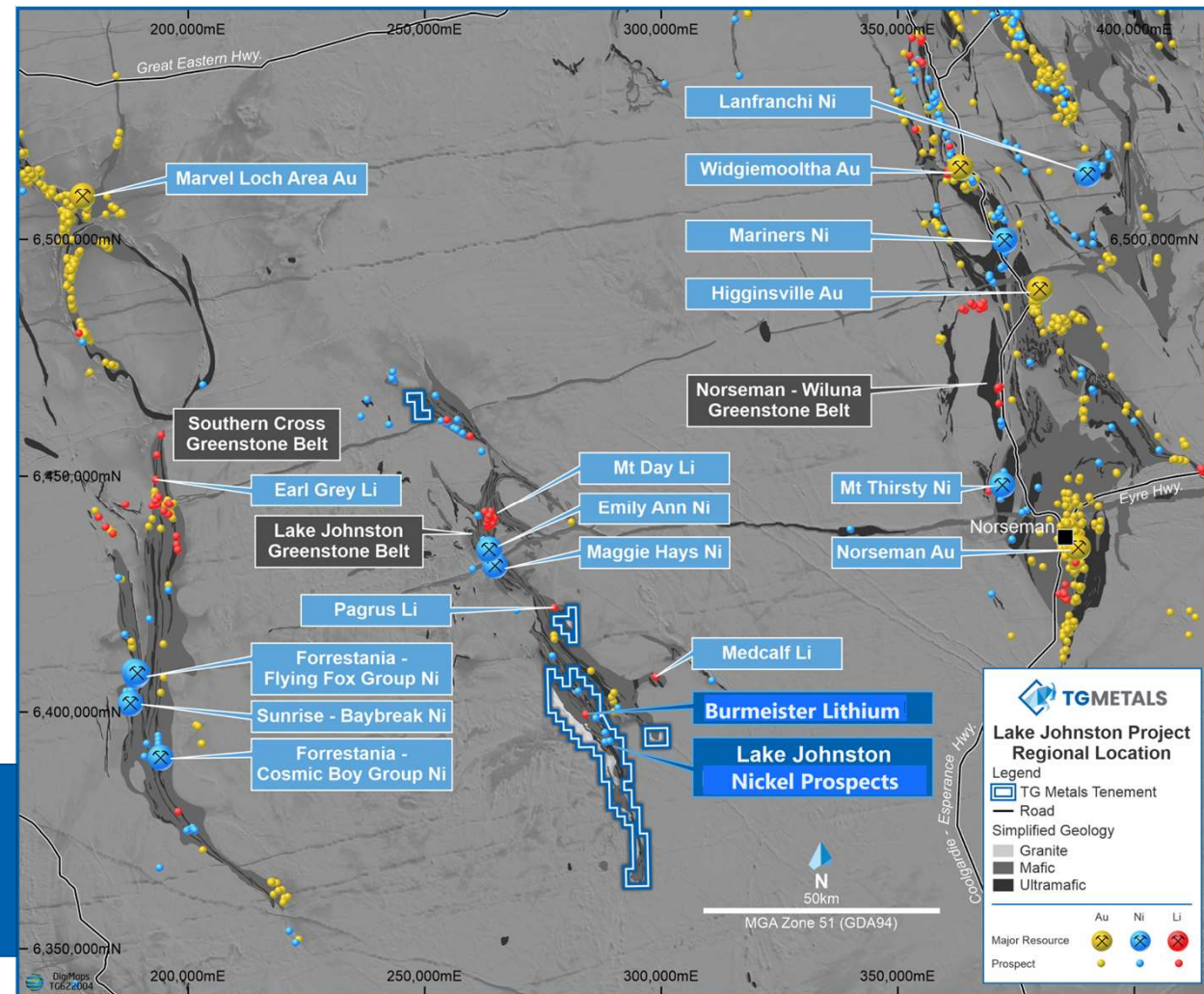
Ms Nicki Farley
Company Secretary
Qualifications: BA LLB, GAICD

Ms Farley has over 15 years' experience working within the legal and corporate advisory sector providing advice in relation to capital raisings, corporate and securities laws, mergers and acquisitions and corporate compliance. Ms Farley has held a number of secretarial roles for ASX listed companies.

Lake Johnston | A Significant Land Package

- The Lake Johnston Greenstone Belt is geologically similar to the prolific nickel & lithium bearing Southern Cross-Forrestania Greenstone Belt that hosts the large Earl Grey lithium deposit
- TG Metals has the most significant land package held by one company within the LJ Greenstone Belt, 356 km² and growing with acquisitions
- +50 km strike of Greenstone Belt
- Flat-lying LCT pegmatites with high lithium tenor intercepted below previously defined large lithium soil anomaly

Located between two prolific lithium bearing Greenstone Belts

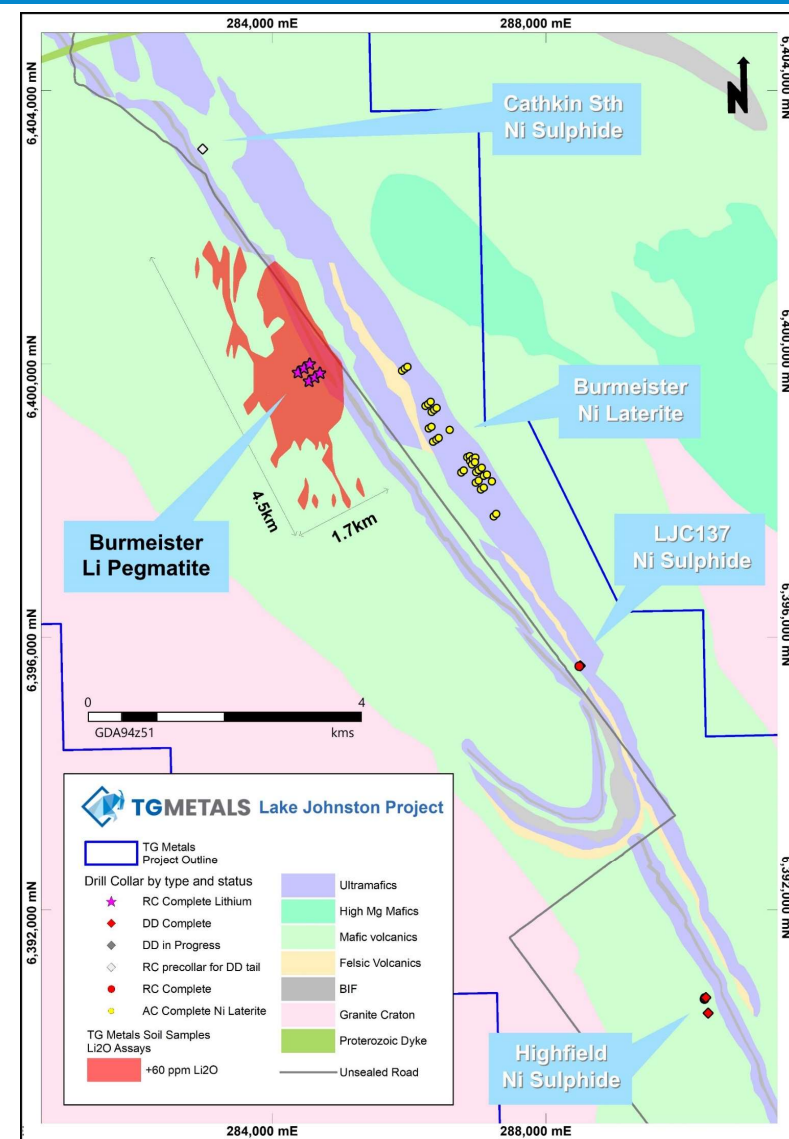


Lithium Discovery

Under Cover - Never Drilled Before

- First RC drilling on Burmeister lithium soil anomaly delivers high grade LCT pegmatite intercepts* including:
 - 9m @ 1.35% Li_2O , from 30m (inc. 1m @ 2.21%)
 - 8m @ 1.25% Li_2O , from 113m
 - 9m @ 1.62% Li_2O , from 87m (inc. 1m @ 2.28%)
- Drilling to date tested a small area within a large soil anomaly (4.5km x 1.7km)
- Stacked pegmatites, to be tested at depth, along strike and up and down dip
- Phase 2 drilling underway, RC to 300m depths and select diamond core tails

Targeted exploration strategy producing results



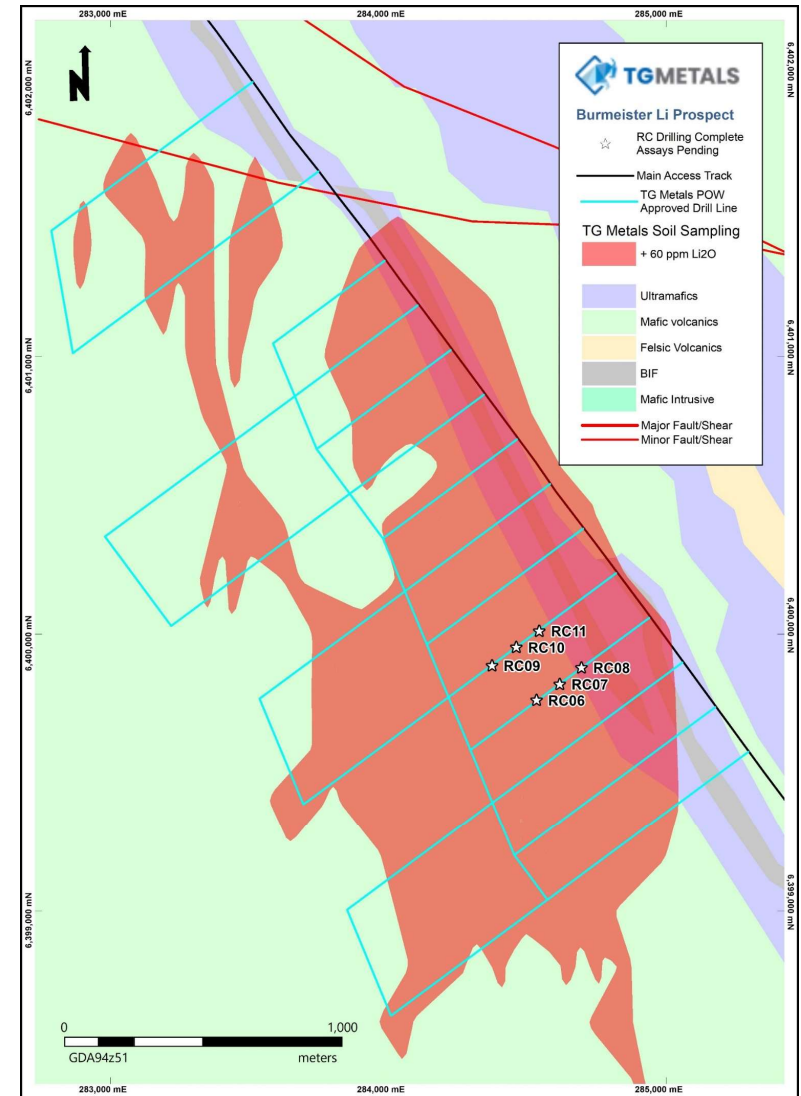
Lithium Discovery

Lithium Intercepts

- First RC drilling targeting orientation and thickness of buried pegmatites
- Widths of **up to 9m** with average grades **+1.25% Li₂O**, including individual metres of **+2.0% Li₂O** *

| Hole ID | FROM (m) | TO (m) | Intercept (m) | Li ₂ O % | Lithology |
|-----------|----------|--------|---------------|---------------------|-----------|
| TGRC0006 | 30.00 | 39.00 | 9.0 | 1.35 | Pegmatite |
| Including | 32.00 | 33.00 | 1.0 | 2.03 | Pegmatite |
| Including | 37.00 | 38.00 | 1.0 | 2.21 | Pegmatite |
| TGRC0007 | 26.00 | 32.00 | 6.0 | 0.79 | Pegmatite |
| Including | 29.00 | 30.00 | 1.0 | 1.12 | Pegmatite |
| TGRC0010 | 113.00 | 121.00 | 8.0 | 1.25 | Pegmatite |
| Including | 115.00 | 121.00 | 6.0 | 1.36 | Pegmatite |
| TGRC0011 | 87.00 | 96.00 | 9.0 | 1.62 | Pegmatite |
| Including | 87.00 | 88.00 | 1.0 | 2.28 | Pegmatite |
| Including | 88.00 | 96.00 | 8.0 | 1.53 | Pegmatite |

High grades over consistent widths

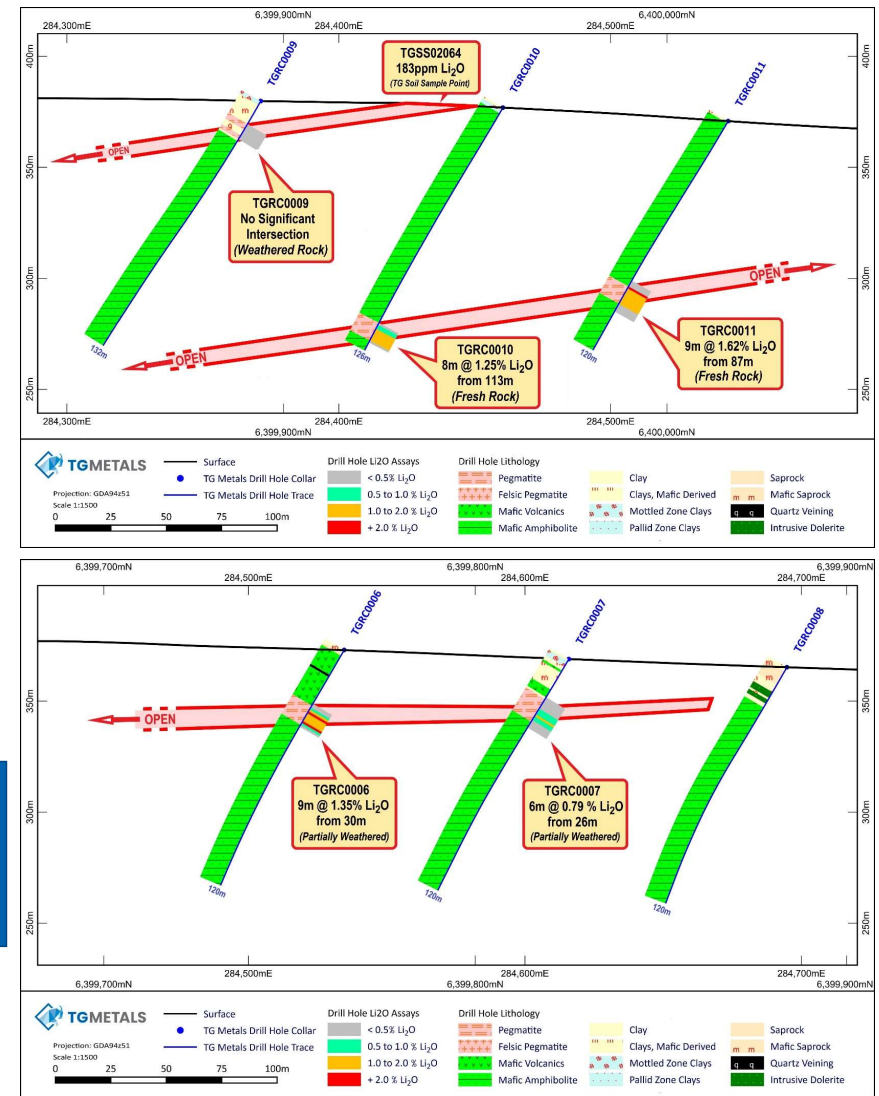


Lithium Discovery

Shallow Drilling

- Five of Six holes drilled hit pegmatite
- Drill lines 200m apart N-S
- Maximum hole depth 120m to 132m
- Strong, richly mineralized pegmatites indicative of a large system
- Spodumene identified as dominant, lithium mineral
- Shallow weathering profile in this area of the project

Pegmatites open down dip, up dip and along strike



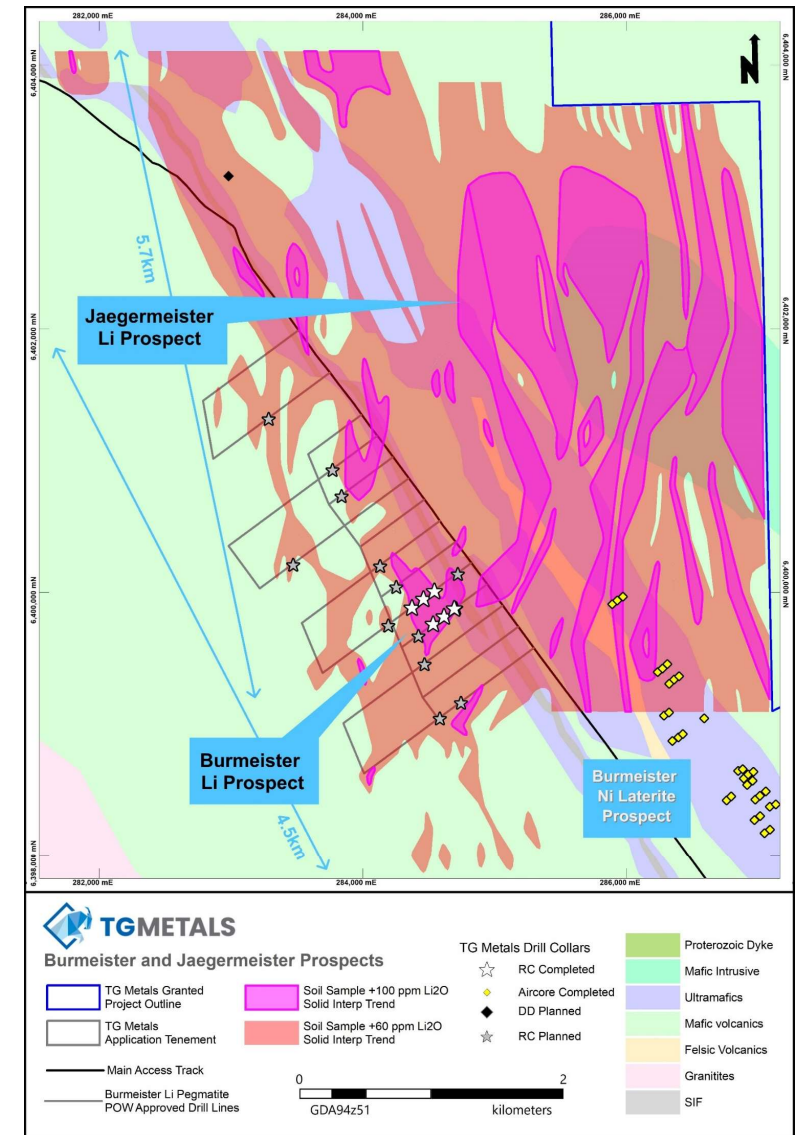
Potential Extensions

- Eastern soil anomaly – high tenor +100ppm
- Potential for further occurrences along all of western margin of the greenstone belt

Current exploration program:

- 2 Drill rigs onsite
- Phase 2 4000m, 13 hole RC drill program to test entire western lithium soil anomaly.
- Additional drill phases to follow based on outcomes
- RC Drill test eastern soil anomaly - Jaegermeister
- Extend soil sampling at targeted locations along the greenstone belt
- Drill below known pegmatite intercepts to test for repetitions

Shallow dipping pegmatites delivers large discovery area



Ongoing Drilling Programs



Exploration Results Drive Shareholder Value Resurgence of Lake Johnston

Explore, Discover & Develop World Class Mineral Deposits for the 21st Century



SYSTEMATIC ANALYSIS

Interrogation of historical data has focused application of new data acquisition - geochemistry and geophysics



APPRAISE AND DEFINE

First time **Lithium** Exploration – **High grade intercepts with first drilling**
Nickel Laterite – Phase 1
Aircore Drilling completed
Nickel Sulphide – Drilling
TEM Conductors



ANALYSIS

Lithium – RC drilling strikes high grades, **step out RC** (initial 4000m), core tail extension to hole #9, other extensions as required .
Nickel Laterite – initial assays confirm high grade
Nickel Sulphide – initial RC with diamond core tails



EXECUTION 2023

Flora/Fauna survey - Completed
Heritage Survey – Completed
LIDAR - Completed
POW and phase 1 aircore – Completed
Lithium RC Drilling – Ongoing
DDH Ni & Li Drilling - Ongoing



MULTIPLE COMMODITIES IN THE ONE LOCATION

Drilling ongoing. Targeted approach ensures best use of funds and highest probability of success – **Ongoing Assay Results**



Thank you

ASX:TG6 | tgmets.com.au

FOR MORE INFORMATION

David Selfe – CEO

Email: dselfe@tgmets.com.au

Call: 0439 030 921

Evvy Litopoulos – Investor Relations

Resolve IR

Email: evvy@resolveir.com

Keep up-to-date with us



[@TGMetals](https://twitter.com/TGMetals)



<https://www.linkedin.com/company/tg-metals-limited/>