

## Lithium Exploration Accelerates at Tambourah Projects

### Highlights

- Shaw River mapping and sampling has uncovered extensive pegmatites to be tested.
- Exploration applications at historic pegmatite area at the Peake NW project.
- Historic soil sampling identified multiple exploration targets at Haystack Well.

### Haystack Well

Tambourah Metals Ltd (ASX:TMB) is pleased to announce that the exploration program at Haystack Well has commenced following the completion of a Heritage survey within the Russian Jack project. The Haystack Well prospect is positioned in the southwest corner of the Russian Jack project. The Russian Jack project comprises of six exploration licences totalling 600 sq km.

Anomalous LCT trends were identified in a previous soil geochemical program at the Haystack Well prospect. Haystack Well is located approximately 100 km south of Marble Bar and 260 km southeast of Port Hedland, in the Pilbara Region of Western Australia. The tenement is approximately 57 square kilometres and is readily accessible via existing tracks from the Marble Bar Road. There are three locations that have had soil sampling programs completed, these include Haystack Well SW, Haystack Well East, and Haystack Well Nth.

The area at Haystack Well SW was initially sampled by Balx Pty Ltd<sup>1</sup> in 2017 and the historic soil sampling reports a 1.0 sq km area with most samples returning over 150ppm lithium and two samples recorded over 500 ppm Li. (Fig 3.) Field investigations recently confirmed the Haystack Well SW soil sampling locations are within 20 metres of several out cropping pegmatites.

At Haystack Well East soil sampling covers an area of 3.8 sq km area and peaked at 186 ppm Lithium. This area is located 200 metres south of the historic Twin Wells Alluvial Tin/Tantalum prospect<sup>1</sup>.

At Haystack Well Nth soil grid covers a 0.5 sq km area and reports multiple soil samples above 250 ppm Li in 2017 have been reviewed.<sup>1</sup>

---

<sup>1</sup> ASX : *Tambourah Completes Acquisition of Pilbara Projects*, 3 July 2023.

The Company will now proceed with further detailed groundwork, data review to progress these targets to the drill testing phase. The project contains indicators of localised L-C-T pegmatites and extensive stacked pegmatite swarms over a 650m wide area which contain Tantalum, Beryl, Corundum and Kunzite (Lithium oxide). There are historic Lithium soil anomalies that have been identified that peak up to 589ppm Li within an area of 1.5km strike length situated within the pegmatitic halo<sup>1</sup>. The anomaly is open in all directions and is located within the 10 km “Goldilocks Zone” from the presumed granite source. The soil anomalies equate to ~2.9km of contact strike-length, with the remaining ~20km to be adequately sampled<sup>2</sup>.

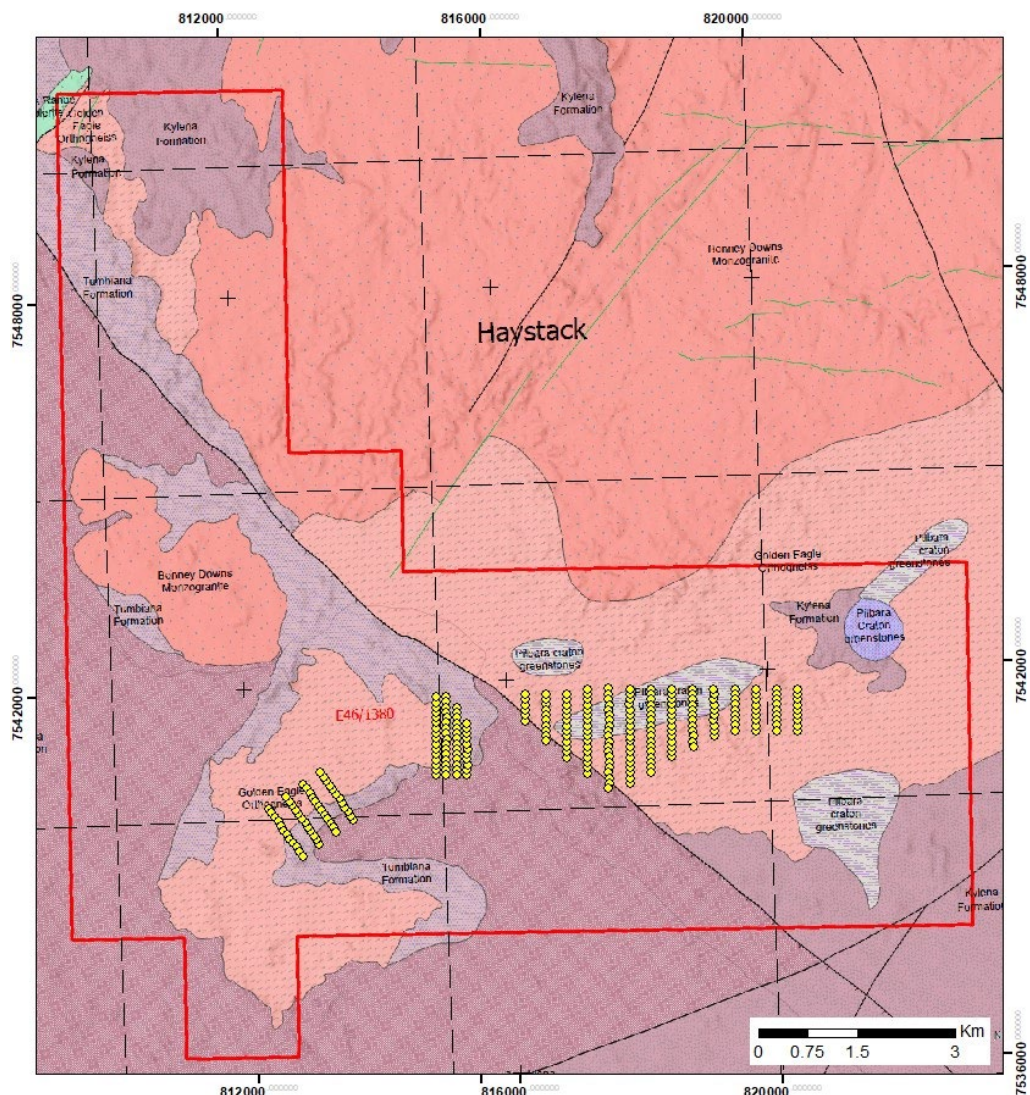


Figure 1: Haystack Well Sampling on Geological Map

<sup>2</sup> Minrex Resources ASX Announcement. MRR Expands Lithium Portfolio. 17 November 2021.

The company intends to complete mapping and close spaced sampling over the forthcoming weeks to confirm drill target locations based on the historic reports. TMB has recently completed an Ethnographic survey at Haystack Well and we thank the Palyku group for their participation.

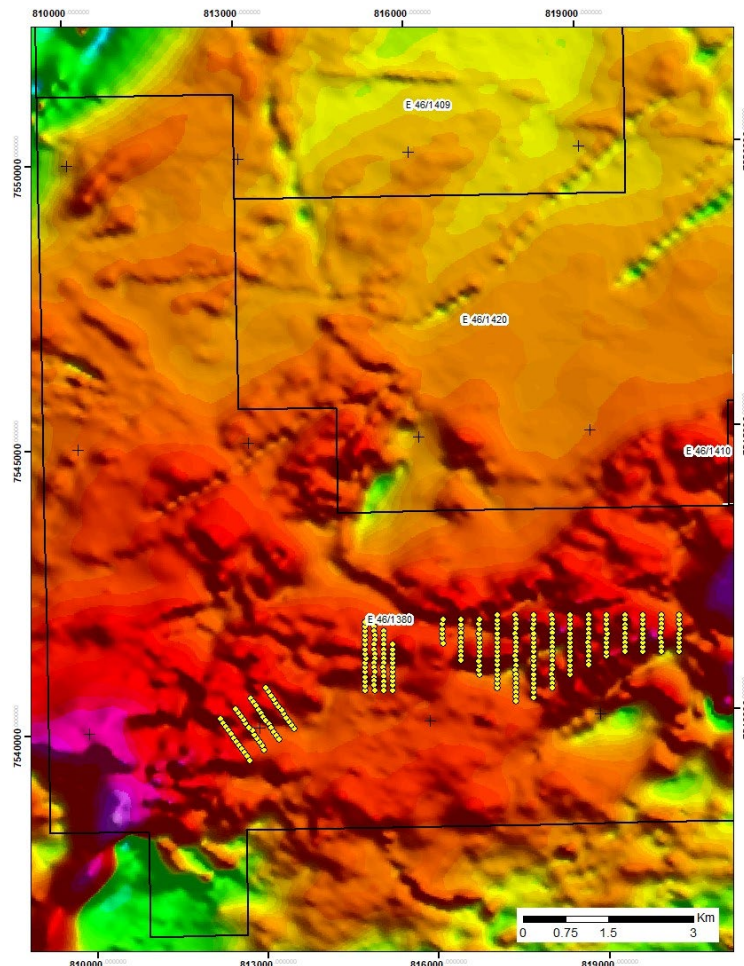


Figure 2: Balx Li sample locations on Magnetics

Rita Brooks Chairperson noted “We are very pleased to commence ground activities at Haystack Well. The company geologists have planned a program of mapping and sampling of the pegmatites in the three locations with Lithium values above 150 - 500 ppm Li. A drone survey is planned to highlight a number of untested pegmatites within the area, and we hope to identify the source of the high-value Lithium in soils in our current exploration program.”

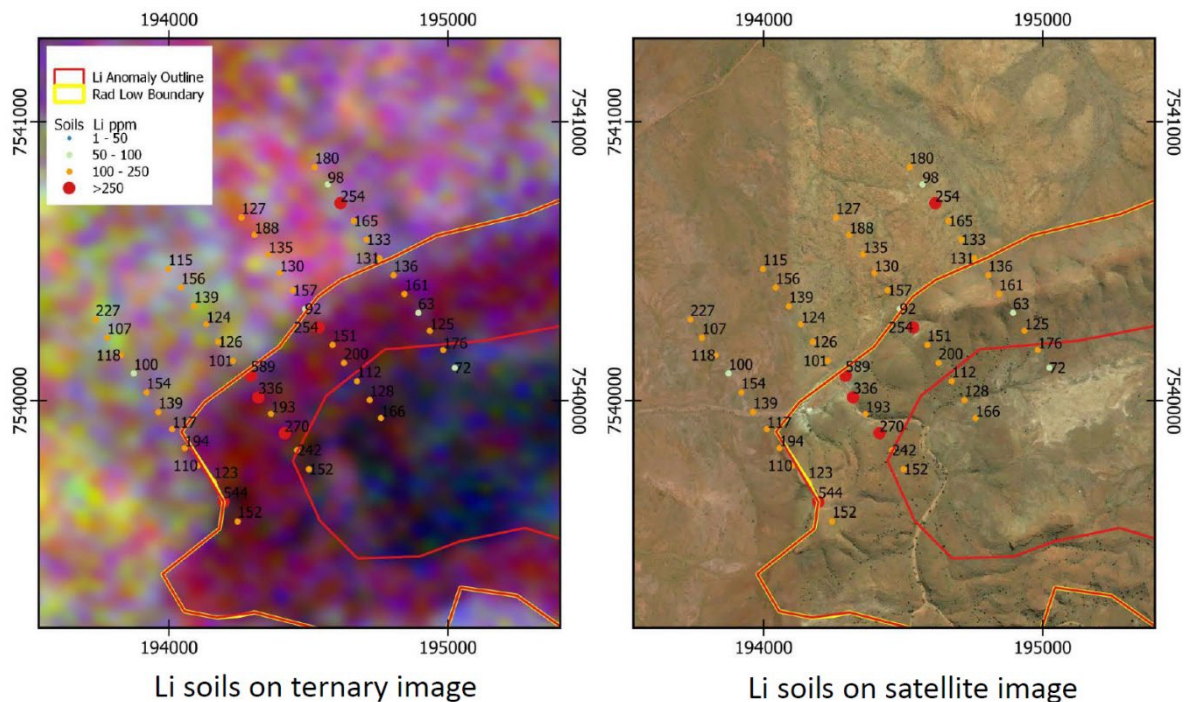


Figure 3: Li soil samples in radiometric and satellite images at Haystack Well SE

### Shaw River and Tambourah Nth Projects

At the Shaw River and Tambourah Nth Lithium exploration projects the company has completed first pass RC drilling of pegmatites. The samples are currently at the laboratory and the company is awaiting the results. The results will be announced when they are available.

Current Mapping and sampling programs at Shaw River have recorded extensive pegmatites up to 300 metres away from the historic workings and a drone survey is planned to refine the extent of these pegmatite outcrops.

## Lake Johnson SE Exploration Commences

Tambourah Metals is pleased to announce it has applied for two Exploration Licences in the Mt Day region to develop Lithium exploration projects in the emerging Lake Johnson province.

The Lake Johnson SE (LJ SE) exploration projects are located south of the Rio Tinto and Flynn Gold tenement holding and west of the TG 6 Metals exploration projects.

The company has commenced regional data compilation, and ground activities will follow upon the grant of the Exploration Licences. Several pegmatite targets have been noted in the historical data compilation within the project area.

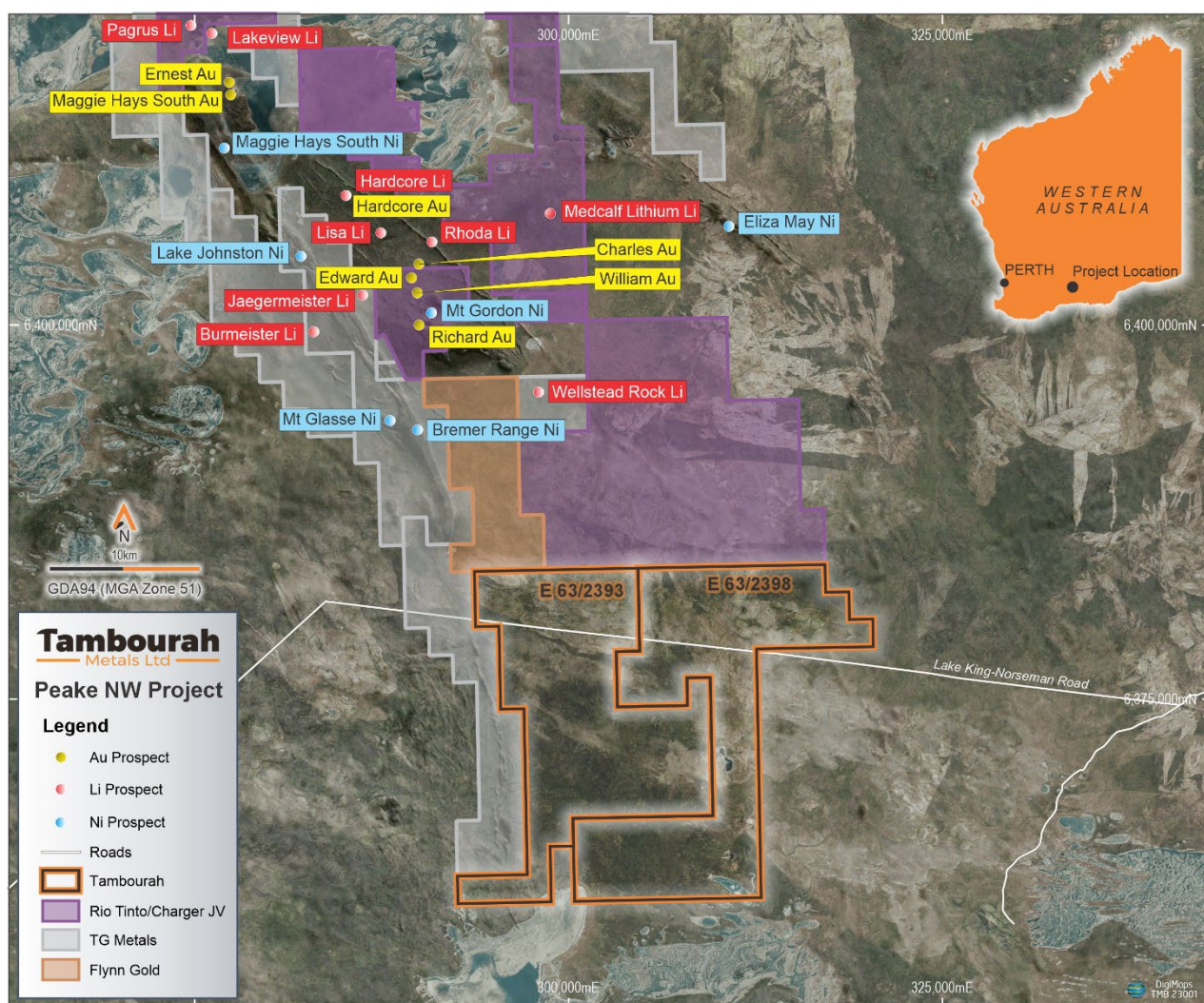


Figure 4: Peake NW Project Tenement Location

Authorised on Behalf of the Board of Tambourah Metals Ltd.

Rita Brooks

**Executive Chairperson**

E: [admin@tambourahmetals.com.au](mailto:admin@tambourahmetals.com.au)

P: + 61 8 9481 8669

## About Tambourah Metals

Tambourah Metals is an exciting junior exploration company established in 2020 to develop critical minerals in Western Australia. Tambourah has proposed exploration Lithium drilling programs at Tambourah Gold and Lithium project and its Russian Jack Lithium project in the Pilbara.

TMB is progressing exploration programs on multiple fronts:

- Developing Lithium projects in the Pilbara and the SE Yilgarn
- Targeting nickel sulphides at Achilles with 22 conductors Identified.
- Collaborating with CSIRO, assessing Lithium pegmatites at RJ project
- Progressing an earn-in with SQM at the Julimar Nth.

## Competent person statement

The information in this report that relates to Exploration Results is based on information compiled by Mr. Steve Nicholls, a consultant to the company, who is a Member of MAIG. Mr. Steve Nicholls has sufficient experience which is relevant to the style of mineralisation and type of deposits under consideration and to the activity which he is undertaking to qualify as a Competent Person as defined in the 2012 Edition of the 'Australasian Code for Reporting of Exploration Results, Mineral Resources and Ore Reserves'. Mr. Steve Nicholls consents to the inclusion in the report of the matters based on this information in the form and context in which it appears.

## Forward Looking Statements

Certain statements in this document are or may be "forward-looking statements" and represent Tambourah's intentions, projections, expectations, or beliefs concerning among other things, future exploration activities. The projections, estimates and beliefs contained in such forward-looking statements don't necessarily involve known and unknown risks, uncertainties, and other factors, many of which are beyond the control of Tambourah Metals, and which may cause Tambourah Metals actual performance in future periods to differ materially from any express or implied estimates or projections. Nothing in this document is a promise or representation as to the future. Statements or assumptions in this document as to future matters may prove to be incorrect and differences may be material. Tambourah Metals does not make any representation or warranty as to the accuracy of such statements or assumptions.

## Exploration Results

The references in this announcement to Exploration Results were reported in accordance with Listing Rule 5.7 in the announcements titled:

- *Tambourah Completes Acquisition of Pilbara Projects, 3 July 2023*

The Company confirms that it is not aware of any new information or data that materially affects the information included in the previous market announcements noted above.



Figure 5 : Tambourah Metals Project Locations

## About Tambourah Metals

Tambourah Metals is a junior exploration company established in 2020 to develop critical minerals in Western Australia. Tambourah has proposed exploration Lithium drilling programs at Tambourah Gold and Lithium project and its Russian Jack Lithium project in the Pilbara.

TMB is progressing exploration programs on multiple fronts:

- Developing six new Lithium projects in the Pilbara.
- Targeting nickel sulphides at Achilles with 22 conductors Identified.
- Collaborating with CSIRO, assessing Lithium pegmatites at Russian Jack.
- Progressing earn-in with SQM at Julimar Nth.