

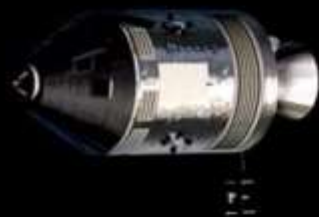
After a 10 year hiatus, a new lithium company emerges from the galaxy

ASX
LU7



Lithium Universe
LIMITED

BUILDING A LITHIUM FUTURE



Iggy Tan, Chairman



Lithium Trail Blazer is Back

- Ran Greenbushes Li in 1995, commissioned Li Carb Plant
- First mining executive - lithium-ion battery future
- Built Mt Cattlin Spodumene Mine (137 ktpa)
- Built Jiangsu Lithium Carbonate Plant (17 ktpa)
- GXY Mkt Cap < \$10 m (left 2013) - rose to \$2.5 b at merger
- First large scale integrated mine to refinery project



- 1 Mtpa mining
- 137,000 tpa concentrate
- DMS plant only
- On time, on budget
- Price US\$ 260/t, today ~US\$ 3,350/t ¹



**Mt Cattlin Spodumene
Operation**

- 17,000 tpa Li Carbonate
- Largest plant in the world at the time
- Start up issues but today at design rate
- Best quality Li Carbonate today
- Price US\$ 6,000/t, today spot of ~US\$31,425/t ²



**Jiangsu Lithium Carbonate
Plant**

Note:

1. Current Spodumene Concentrate(6%, CIF China) Price, USD/mt sourced from SMM at <https://www.metal.com/Lithium/201906260003> on 18th August 2023

2. Current Lithium Carbonate (99.5% Battery Grade) Price, USD/mt sourced from SMM at <https://www.metal.com/Lithium/20110225005> on 18th August 2023

Greenbushes Lithium Veteran

- Ran Greenbushes Mine for 25 years
- Spodumene concentrating experience
- Oversaw expansion from 200 Ktpa to 1.4 Mtpa
- Largest spodumene mine in the world
- Highest grade deposit



Patrick Scallan OAM
Non Executive Director

Why Canada?

- Australia produced >2.3 mt spodumene in 2022
- Australia pillar of China Li battery value chain
- Fertile ground for spodumene
- Not much production from Canada
- Many exploration companies now in Canada
- Australian expertise moving to Canada



“Canada wants to be the “Australia to North America”

Joe Lowry, Mr Lithium

“Lithium projects are taking too long to be built and there is not enough coming on line to meet future demand”

Iggy Tan
Non Executive Chairman

“There are many lithium explorers, but not many have the experience to build lithium projects”

**“We are not here to explore for
exploration's sake”**

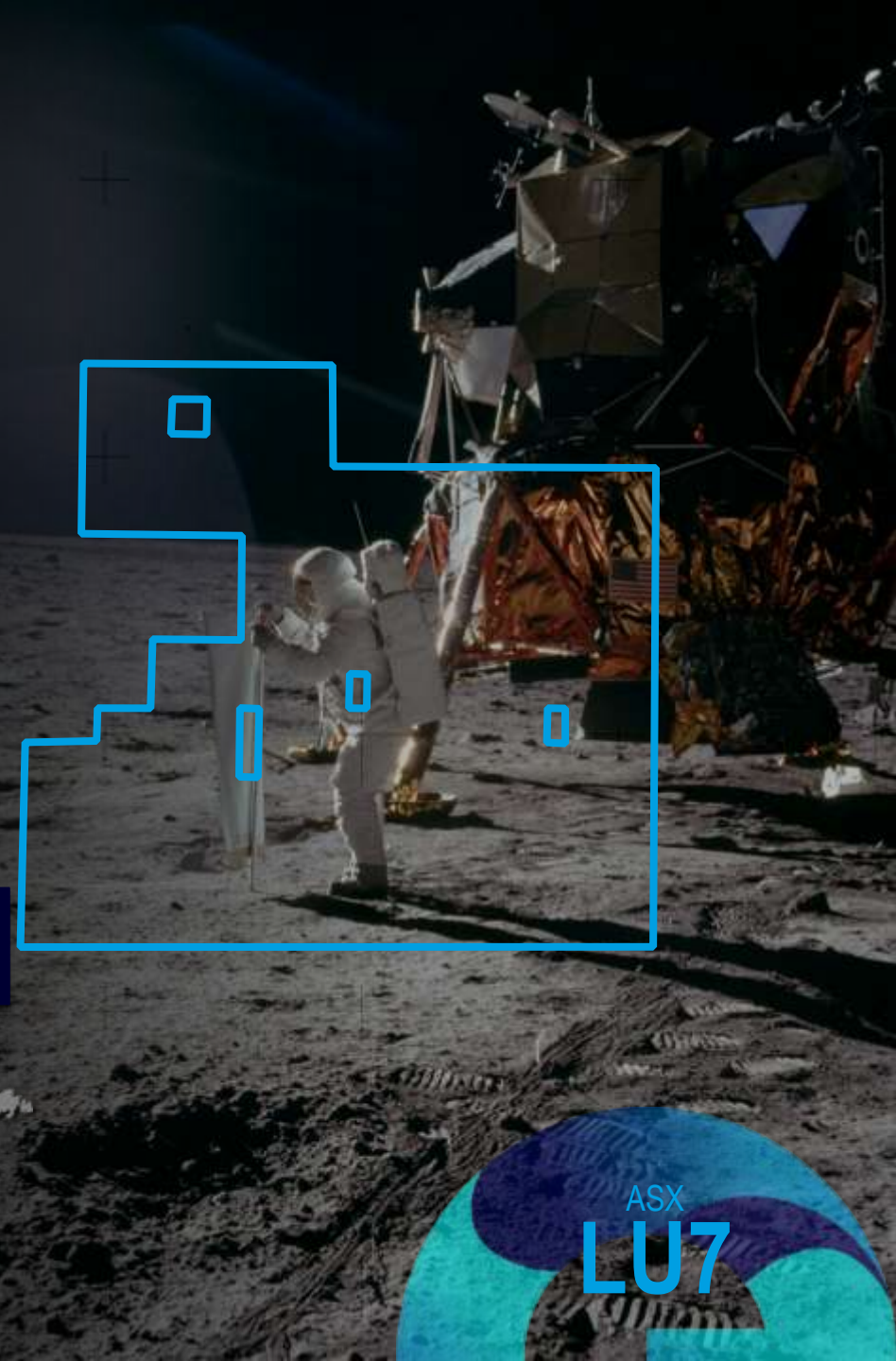


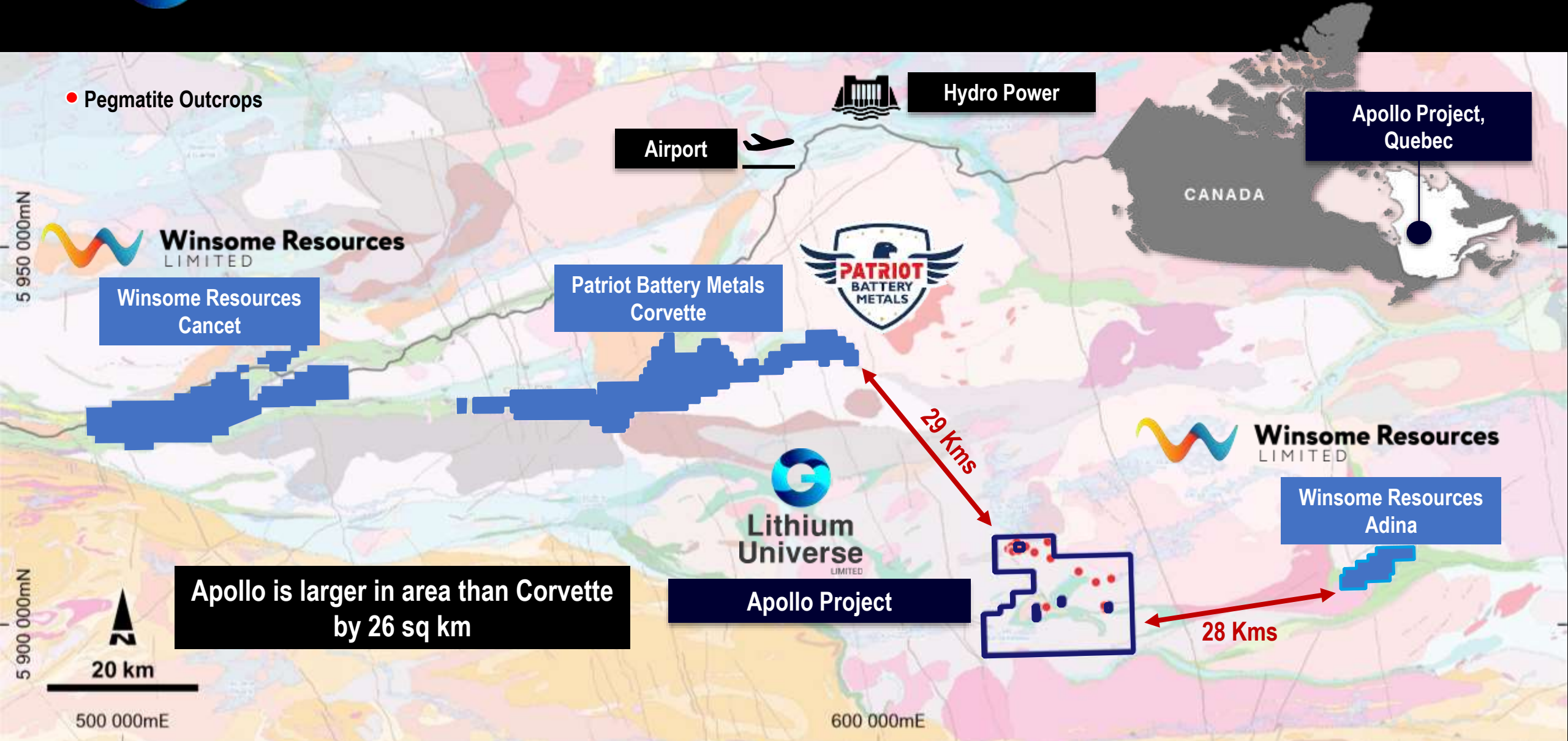
**“We are here to build a Lithium project in
Canada as quick as we can”**

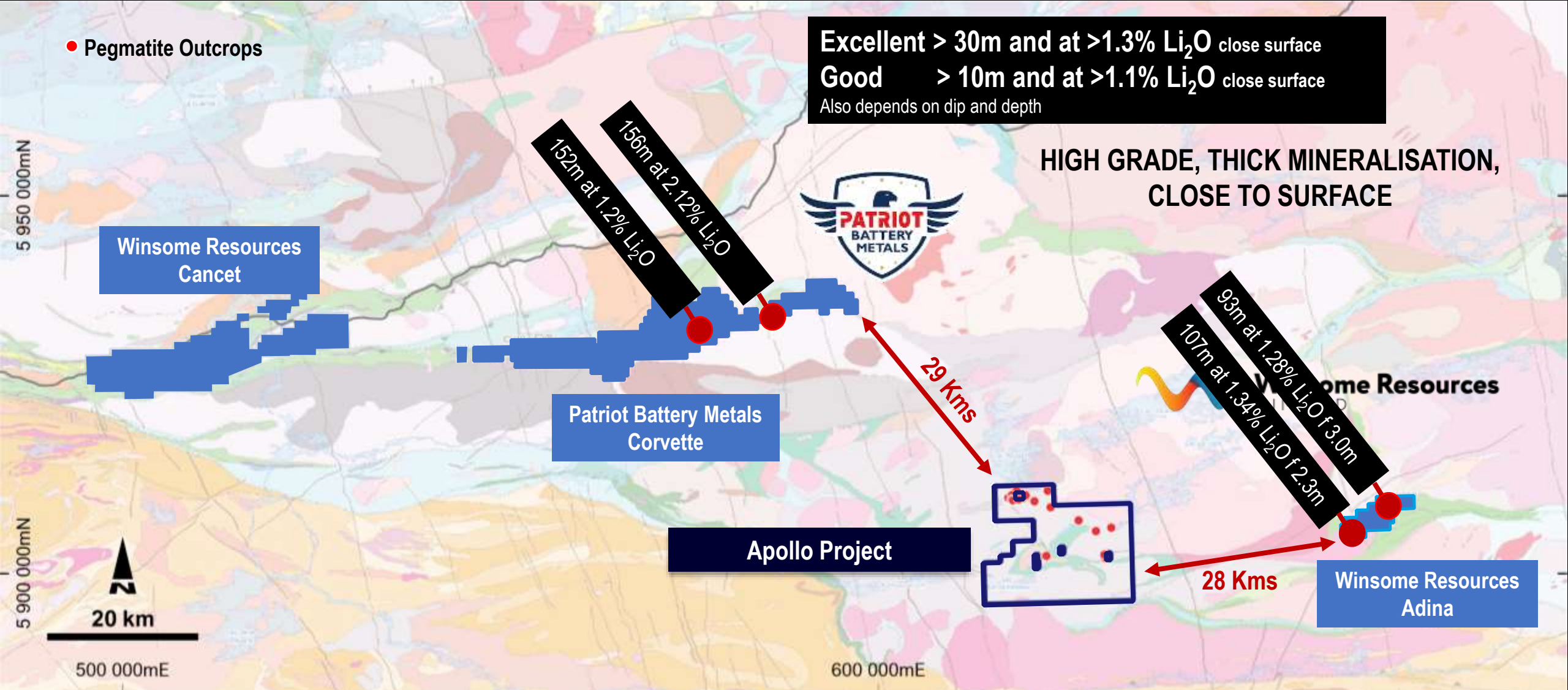


Apollo Vehicle to the Universe

- Situated in James Bay, Quebec
- Apollo (80%) Acquired in June 2023
- Large footprint of 466 claims & 240 km²
- When staked Lithium cycle was at its low point
- Between two unknown exploration companies
- NASA passion for discovery



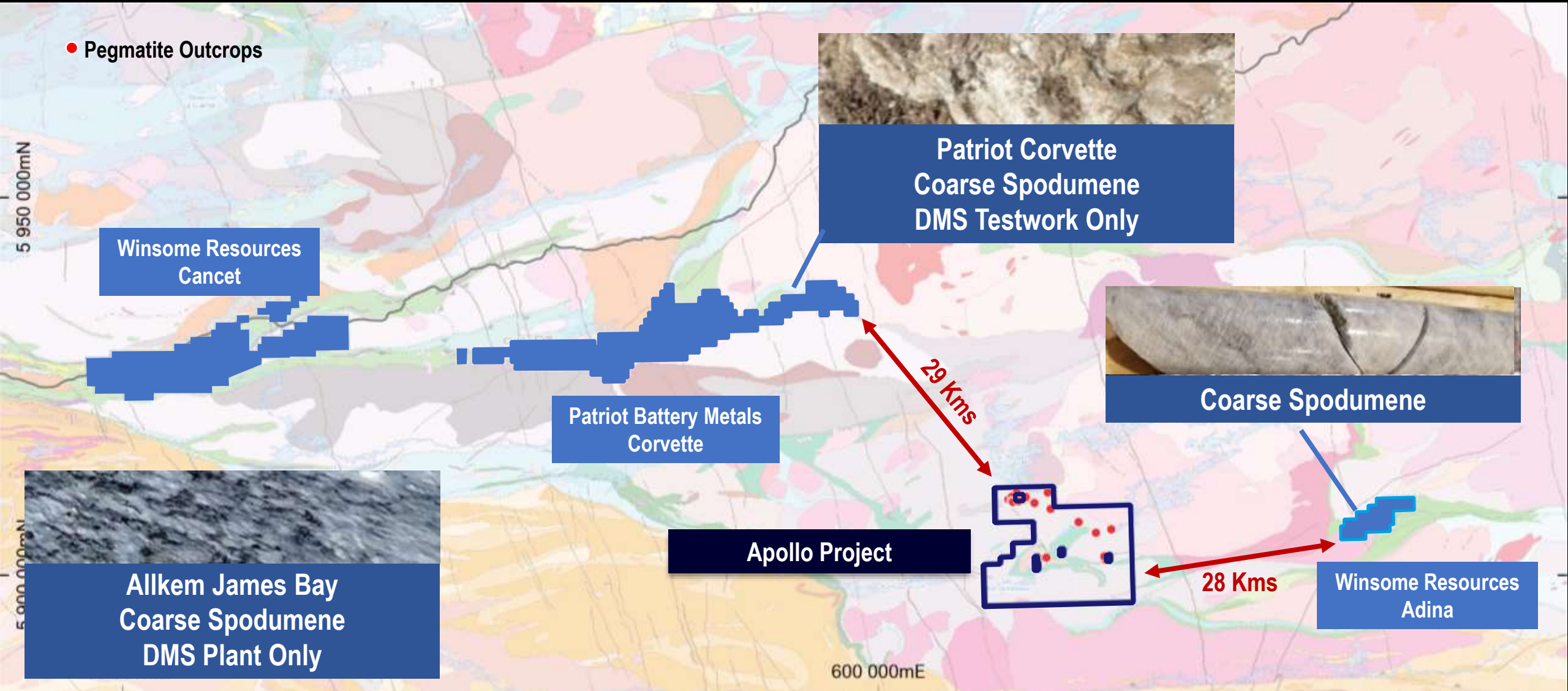




Exploration Commences at Apollo

- Partnered with Laurentia Exploration Inc
- High-resolution Airborne Magnetic Survey completed
- Micro-Gravity and soil sampling program
- Priority drilling targets identified





Benefits of Coarse Spodumene



Example of Spodumene crystal – For demonstration and not to represent any results at Apollo deposit

Mt Cattlin & James Bay are Coarse Spodumene Projects



Iggy Tan
Chairman
Ex Galaxy MD



Patrick Scallan
NED
Ex GM Talison Lithium

Lithium Dream Team

Alex Hanly
CEO



Dr Jingyuan Liu
NED
Ex Galaxy GM Technology



John Loxton
Head of Li Refinery
Ex Hatch Li Carb Plant

Terry Stark
Head of Mining
Ex Galaxy
GM Operations

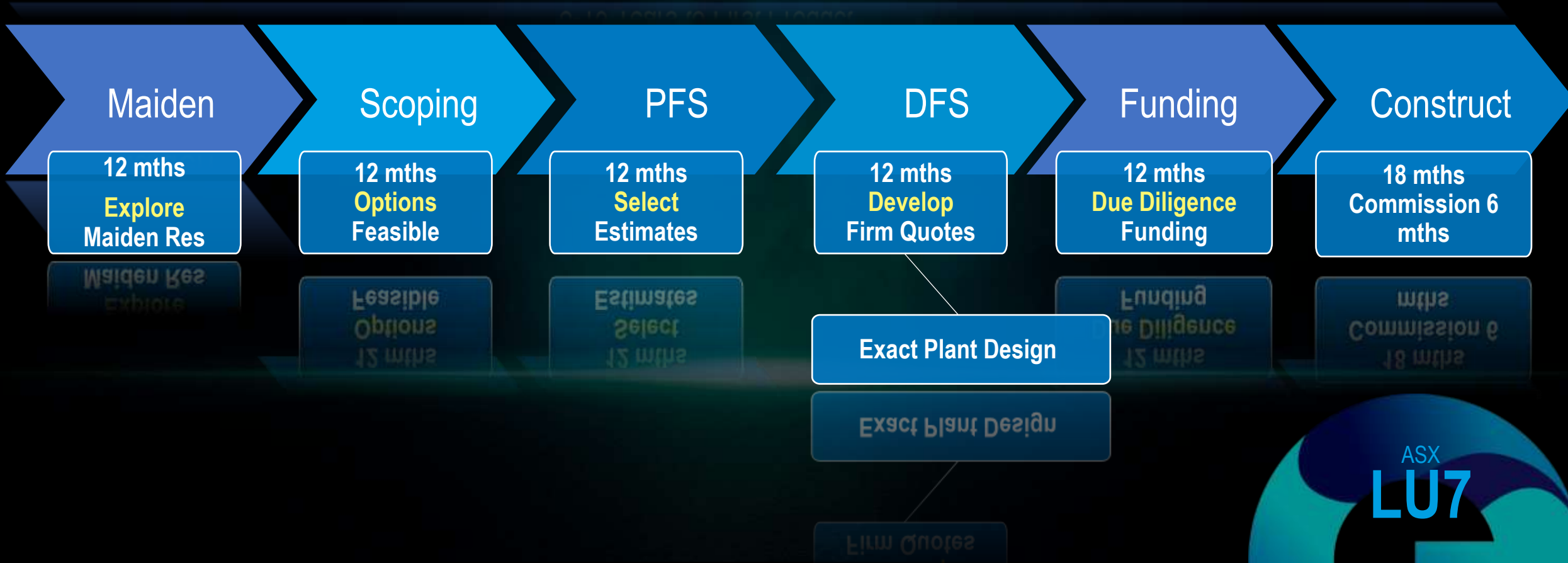


Roger Pover
Head of Processing
Ex Galaxy Plant Manager

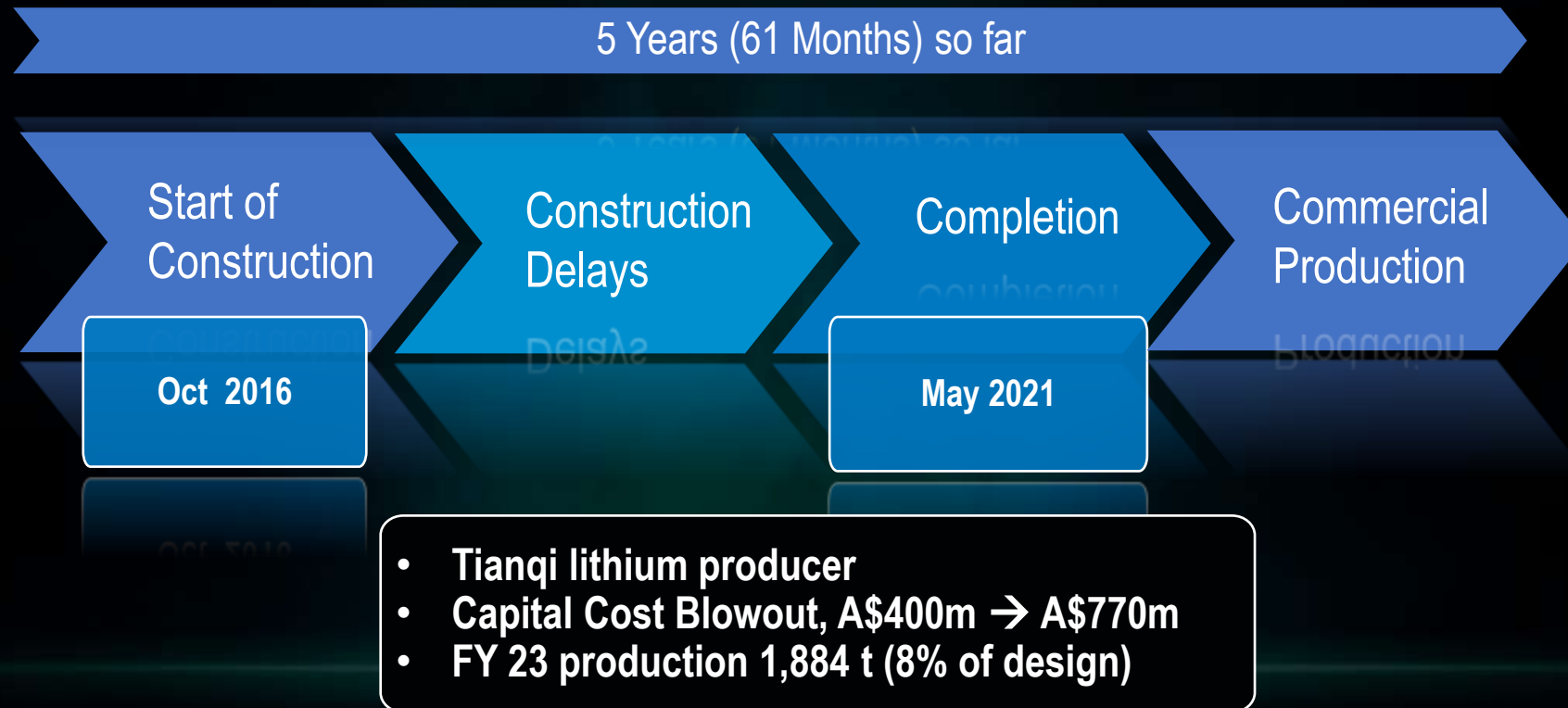


Huy Nguyen
Engineering Manager
Ex Mt Cattlin Construction

8-10 Years to First Product







Canada Lithium



- DFS completed 2011
- Started 2014
- Spent circa CAD 250m
- Produced 109 t LC
- Bankruptcy 2015

Nemaska Lithium



- DFS completed 2018
- Spent CAD 411 m
- Failed to start up 2019

Dream Team Track Record

Jiangsu Li Carbonate Plant



Why have these projects failed?

- Lack of Operating Maintenance direction at design
- Lack of overall plant operation understanding
- Limited Management oversight at design
- Limited Commissioning experience

That's why our Lithium Dream Team are Operators



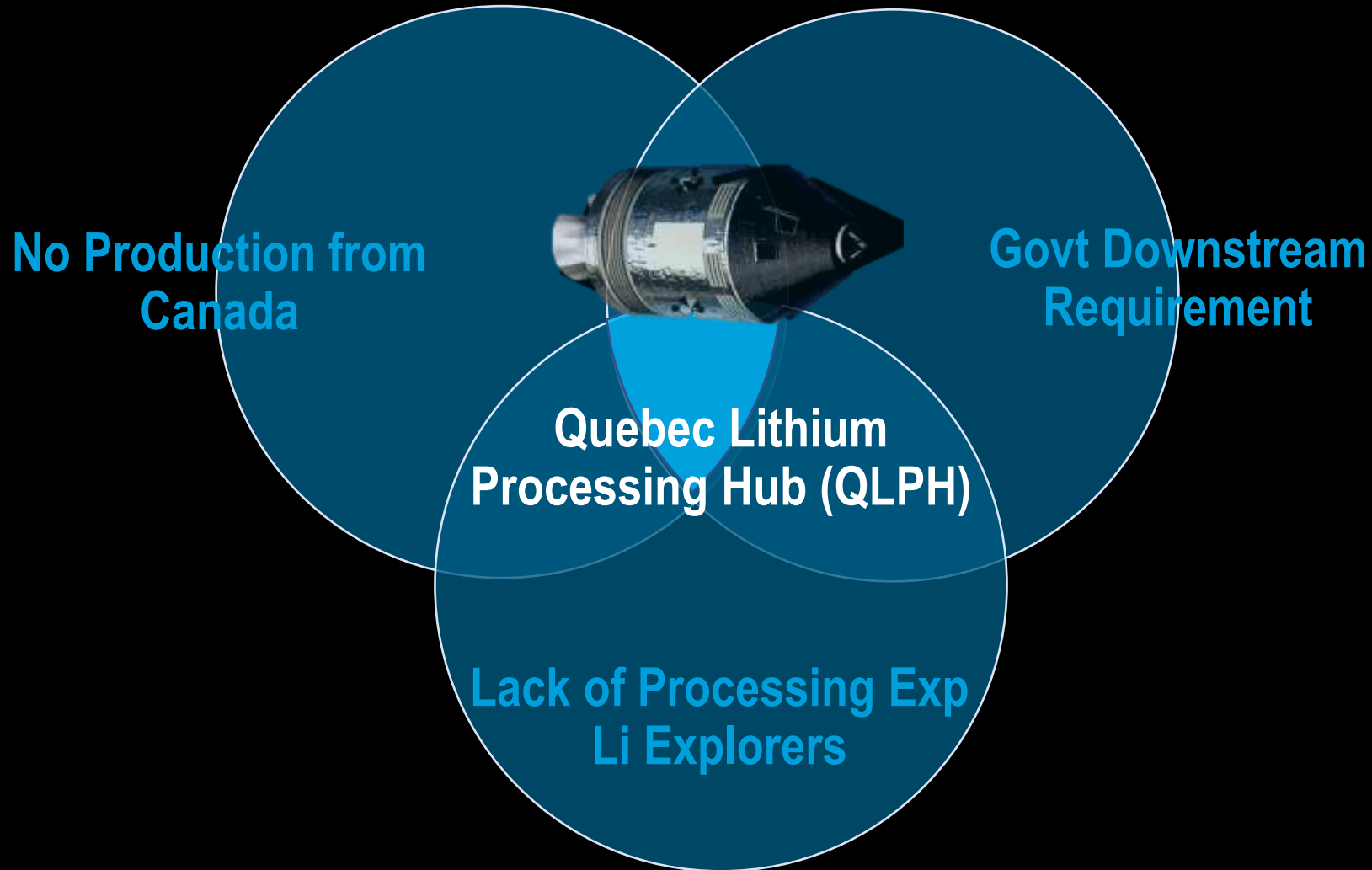
Canada Forcing Critical Minerals Strategy

- Ordered Sinomine to divest from Power Metals Corp
- Relinquish spodumene off-take contract
- Citing “multi-step security review”
- Established automotive industry → EVs
- Canada appears to be forcing a downstream lithium solution

Canada orders China to divest from country's mining companies

Move comes after 'multi-step' review by Canada's national security and intelligence agencies





Quebec Lithium Processing Hub (QLPH) Concept

Mine to Battery Grade Lithium Carbonate Strategy

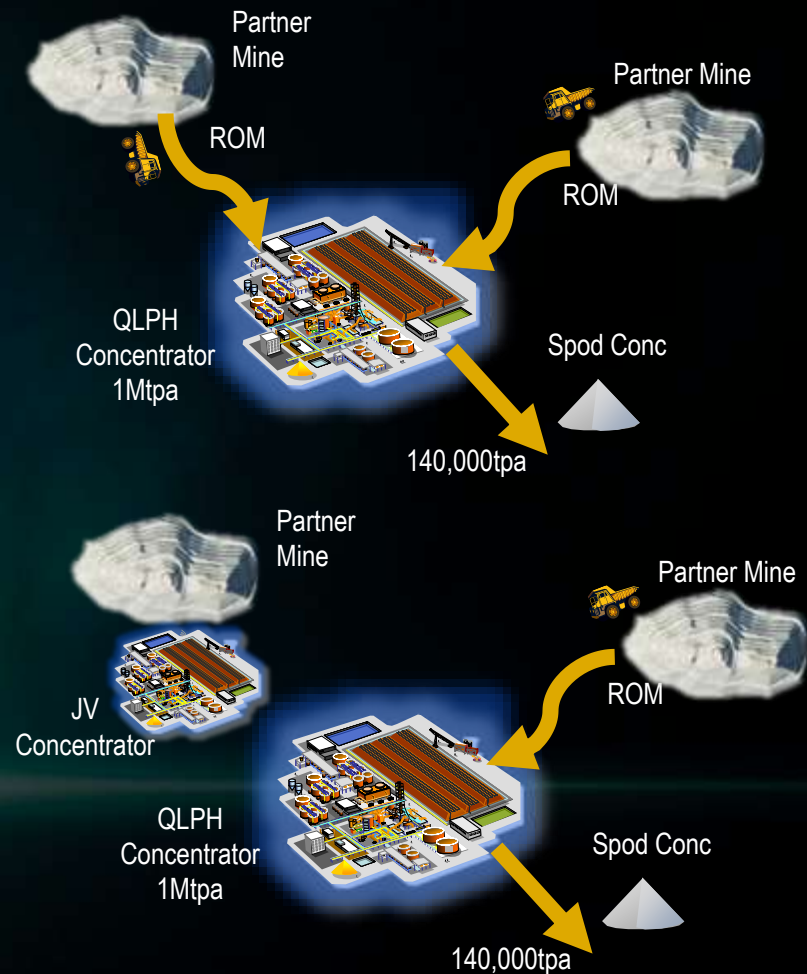


QLPH Concentrator

- Based on proven Mt Cattlin design
- 5 Year ROM off-take JV deal – local juniors
- Not a toll company – purchase ROM
- Brings early cash flow for juniors to develop mines

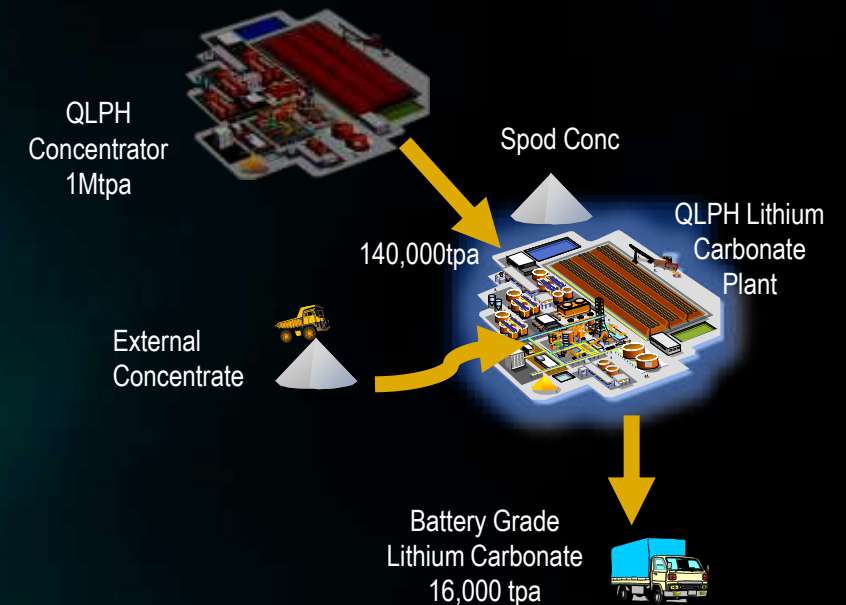
Concentrator JV

- After 5 years JV builds a concentrator on their project
- Replicate QLPH concentrator
- Helps juniors become a concentrate producer



Battery Grade Lithium Refinery

- 16,000 tpa battery grade lithium carbonate plant
- No a toll Company – Purchaser of Concentrate
- Based on proven Jiangsu design
- Battery grade LC sold to Canada, USA, Europe
- Meets Canadian Government critical minerals strategy
- Provides downstream solution for Canadian Li miners



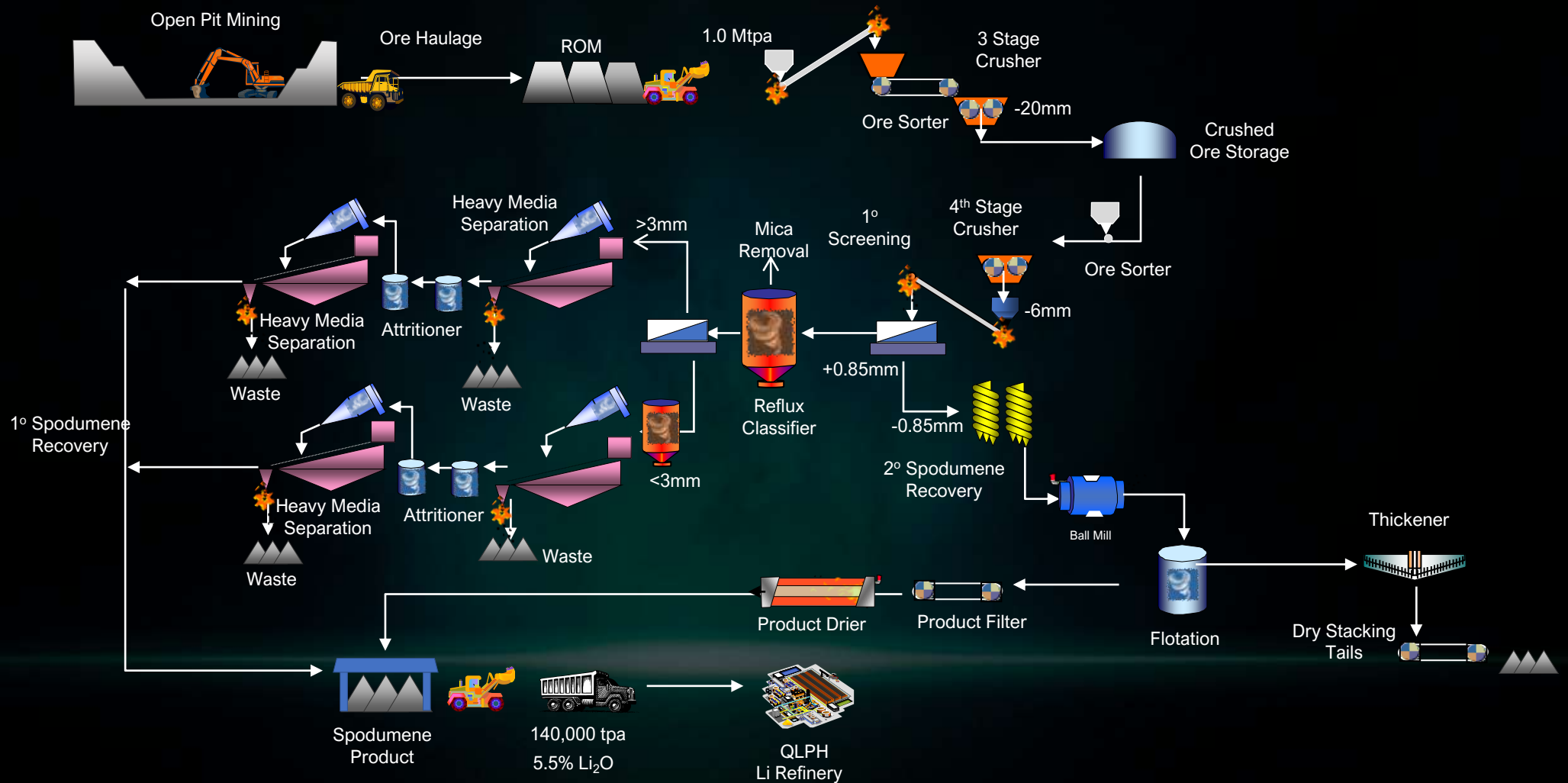
QLPH Concentrator Engineering Study

- Primero Engineering Co appointed
- Lithium experience – Bald Hill, Covalent, Core, James Bay
- International Co, Aust based, Toronto Office
- Today's price to build a Mt Cattlin style concentrator in Canada
- DFS level of study

2



PRIMERO



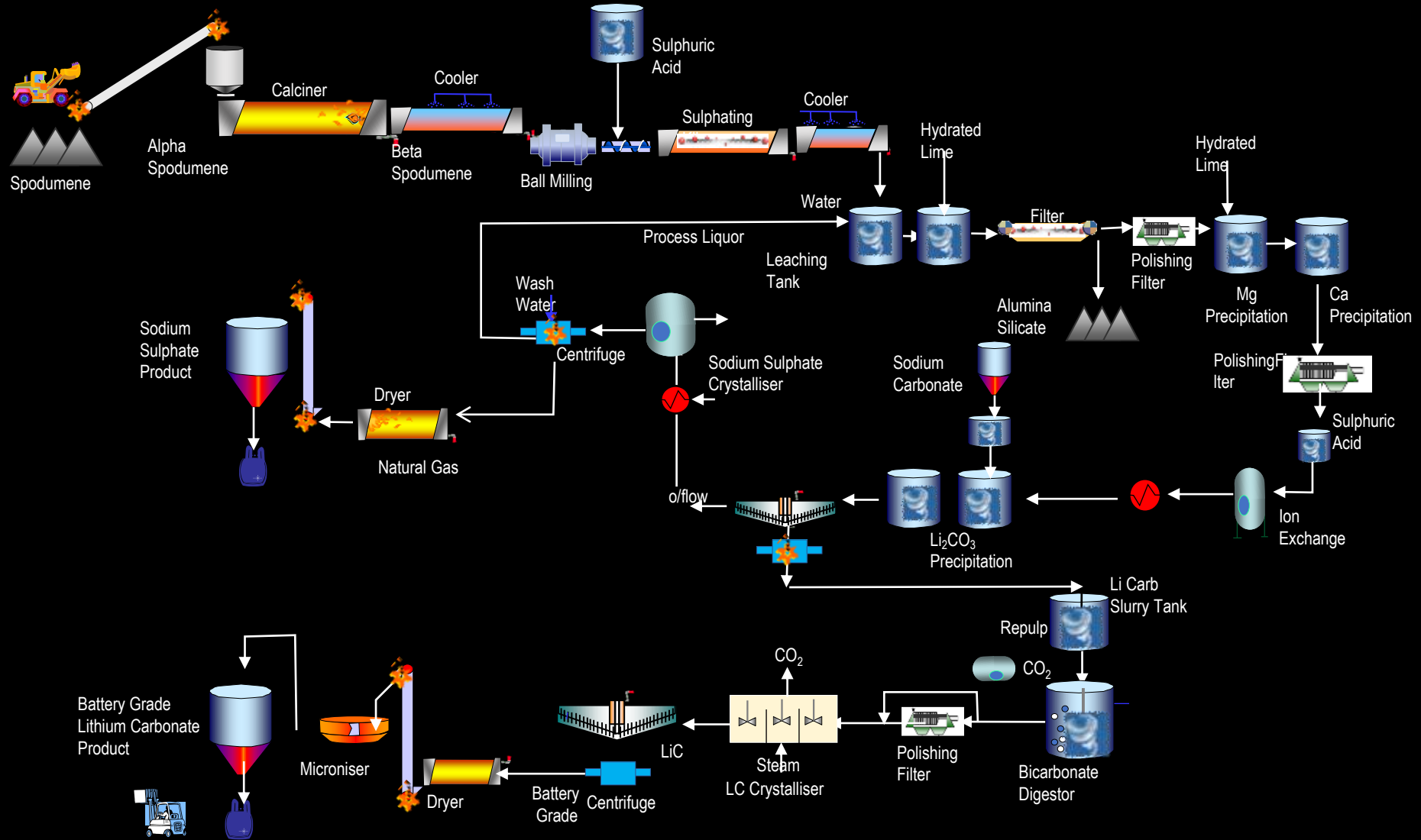
QLPH Lithium Carbonate Engineering Study

- Hatch Engineering Company appointed
- Canadian Co, Aust based, Canadian Offices
- Quebec experience (Raglan, Jansen, Gahcho Kué)
- Built Jiangsu Li Carbonate Plant
- Today's price to build a Jiangsu style refinery in Canada
- DFS level of study

3



HATCH



Filling the Downstream Gap

- Little Merchant Lithium Refineries in Nth America
- Big gap that needs to be plugged
- Our focus is to start at downstream and work upstream
- Strong investment interest
- Discussions with many juniors – target establish resource
- Location study for Li Refinery completed



Li Carb Refinery Location Study



- Hatch conducted study
- NG, HV electricity, water, rail, road, and port facilities
- Labor availability, costs, waste management
- Bécancour Industrial Park most favoured
- Bécancour port, St Lawrence River, 80km Québec City
- Commenced discussions with the industrial park

Why Li Carbonate not Li Hydroxide?

- We have a proven track record in Li Carbonate
- 47% Li Carbonate used around the world
- Li Carbonate feed for LFP lithium batteries
- LFP battery growth due to safety and costs
- Tesla moving to LFP batteries



Apollo Lithium Project

Between two major discoveries, large potential

Lithium Dream Team

Proven Lithium Track Record

Quebec Lithium Processing Hub Concept

Vertically integrated mine to battery grade lithium strategy

**Join us on our Mission to
the Universe**

Building a Lithium Future





FORWARD-LOOKING STATEMENTS

The Company wishes to remind investors that the presence of pegmatite does not necessarily equate to spodumene mineralization. Also that the presence of pegmatite and spodumene mineralization on nearby tenements does not necessarily equate to the occurrence on Lithium Universe Limited's tenements. This announcement contains forward-looking statements which are identified by words such as 'anticipates', 'forecasts', 'may', 'will', 'could', 'believes', 'estimates', 'targets', 'expects', 'plan' or 'intends' and other similar words that involve risks and uncertainties. Indications of, and guidelines or outlook on, future earnings, distributions or financial position or performance and targets, estimates and assumptions in respect of production, prices, operating costs, results, capital expenditures, reserves and resources are also forward looking statements. These statements are based on an assessment of present economic and operating conditions, and on a number of assumptions and estimates regarding future events and actions that, while considered reasonable as at the date of this announcement and are expected to take place, are inherently subject to significant technical, business, economic, competitive, political and social uncertainties and contingencies. Such forward-looking statements are not guarantees of future performance and involve known and unknown risks, uncertainties, assumptions and other important factors, many of which are beyond the control of our Company, the Directors and management. We cannot and do not give any assurance that the results, performance or achievements expressed or implied by the forward-looking statements contained in this announcement will actually occur and readers are cautioned not to place undue reliance on these forward-looking statements. These forward looking statements are subject to various risk factors that could cause actual events or results to differ materially from the events or results estimated, expressed or anticipated in these statements.

IMPORTANT NOTICE & DISCLAIMER

The purpose of this presentation is to provide background information to assist readers in obtaining a general understanding of Lithium Universe Limited (LU7 or the Company) and its objectives. Readers should make their own independent assessment of the information and take their own independent professional advice in relation to the information and any proposed action to be taken in on the basis of the information. To the maximum extent permitted by law, LU7 and its professional advisors and their related bodies corporate, affiliates and each of their respective directors, officers, partners, employees, advisers and agents and any other person involved in the preparation of this presentation disclaim all liability and responsibility (including without limitation any liability arising from fault or negligence) for any direct or indirect loss or damage which may arise or be suffered through use of or reliance on anything contained in, or omitted from, this presentation. Neither LU7 nor its advisors have any responsibility or obligation to inform the reader of any matter arising or coming to their notice after the date of this presentation, which may affect any matter referred to in the presentation. The distribution of this Presentation (including an electronic copy) outside Australia may be restricted by law. If you come into possession of this Presentation, you should observe such restrictions and seek your own advice on such restrictions. Any non-compliance with these restrictions may contravene applicable securities.

NOT AN OFFER

This presentation is not and should not be considered as an offer or invitation to apply for or purchase securities of the Company or as a recommendation or inducement to make an offer or invitation in respect of the Company's securities. This presentation is not a disclosure document under Australian law or under any other law. It does not purport to contain all the information any reader or prospective investor may require to make an investment decision and it does not contain all of the information required by Australian law or any other law to be disclosed in a prospectus. In particular, this presentation does not constitute an offer to sell, or the solicitation of an offer to buy, any securities in the United States. This Presentation may not be distributed or released in the United States.

Securities in the Company have not been, nor will be, registered under the U.S. Securities Act of 1933, or the securities laws of any state or other jurisdiction in the United States. Accordingly, the securities in the Company may not be offered or sold, directly or indirectly to, persons in the United States or persons who are acting for the account or benefit of a person in the United States unless they have been registered under the U.S. Securities Act or in a transaction exempt from, or not subject to, the registration requirements of the U.S. Securities Act and any other applicable U.S. laws.

NOT INVESTMENT ADVICE

The presentation is not investment or financial product advice (nor tax, accounting or legal advice) and is not intended to be used for the basis of making an investment decision.

NO LIABILITY

No representation or warranty, express or implied, is given as to the fairness, accuracy, completeness, reliability or adequacy of statements, estimates, opinions or other information, or the reasonableness of any assumption or statement in this presentation (any of which may change without notice), or the likelihood of achievement or reasonableness of forecasts or prospective statements in this presentation. Forecasts and prospective statements are by their nature subject to significant uncertainties and contingencies. Forecasts and prospective statements in this presentation are based on current expectations about future events and are subject to risks, uncertainties and assumptions that could cause actual results to differ materially from the expectations described.

This presentation has been approved for release by the Chairman of Lithium Universe Limited.