

MLS Launches Aggressive Lithium Exploration Program at Warrambie Project - 10km From Andover

- *Detailed gravity and seismic programs underway to detect covered spodumene-bearing lithium pegmatites for drilling in priority Andover 'look-alike' target zone*
- Metals Australia (MLS) has commenced an aggressive exploration program over a priority Andover 'look-alike' geophysical target at its 126km² Warrambie project in Western Australia's highly-prospective northwest Pilbara lithium province (see Figure 1 below).
- Warrambie is located just 10km east of Azure Minerals' (ASX: AZS) world-class Andover Project, which has produced spectacular drilling intersections of up to 209.4m @ 1.42% Li₂O¹ from spodumene-bearing pegmatites associated with a northeast trending structural corridor evident in magnetic imagery. Significantly, Warrambie covers a near identical series of northeast trending structures in magnetic rocks likely to be mafic intrusives similar to the Andover pegmatite host rocks (see Figure 1).

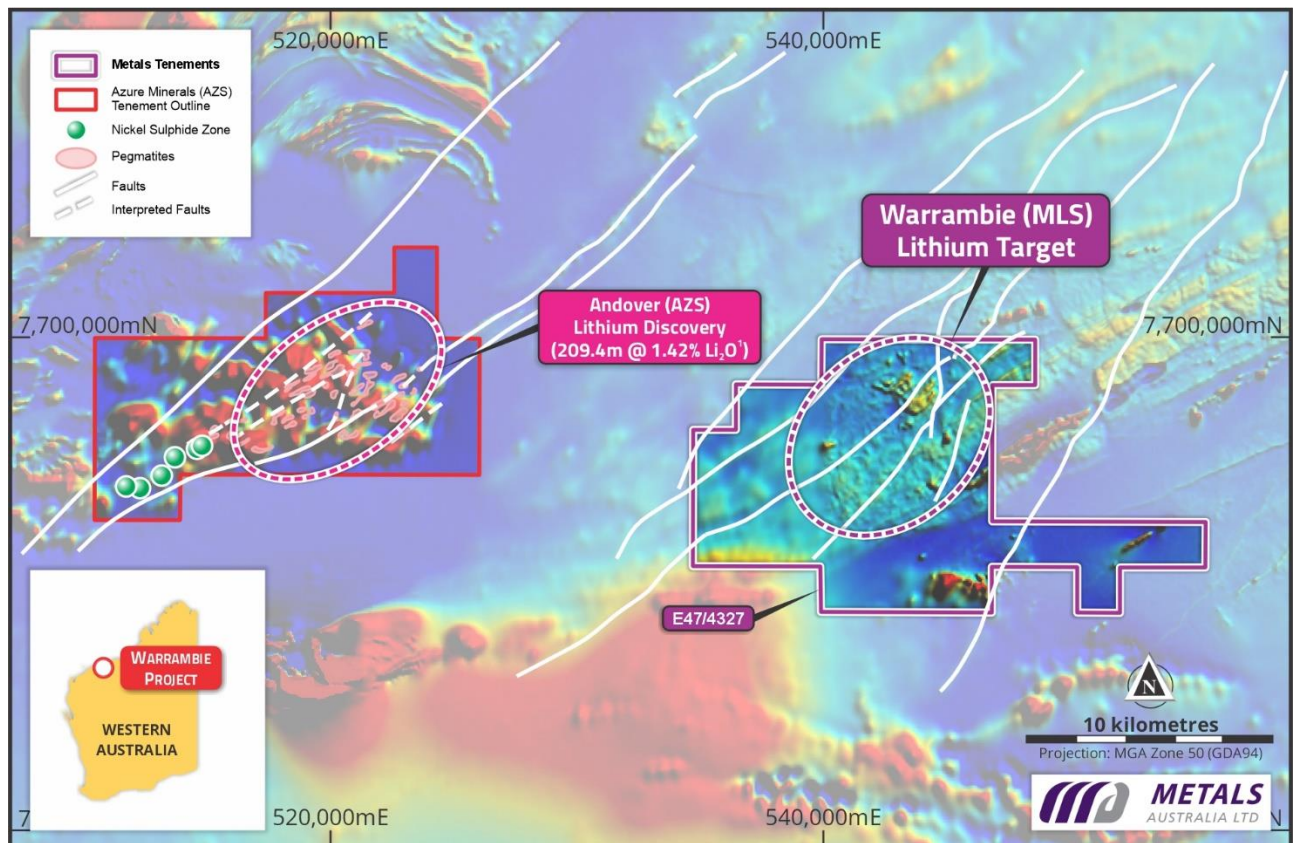


Figure 1: MLS Warrambie Project, 10km east of Andover Lithium Discovery, on magnetic imagery

- Multi-faceted exploration program including detailed gravity and passive seismic to detect covered lithium-pegmatite dykes - to be completed by December, and followed up with aircore drilling.

Metals Australia Chairman, Mike Scivolo, commented:

“We are delighted to get this aggressive exploration program underway, targeting an outstanding Andover look-alike target which the Company has identified at our 126km² Warrambie exploration licence in the highly prospective northwest Pilbara region of WA.

“Completion of these key geophysical programs before Christmas will allow the Company to define targets for covered spodumene pegmatites within a priority zone which shows a similar magnetic pattern to the world-class Andover lithium discovery, just 10km west of Warrambie.

“The geophysical programs will be followed by detailed soil sampling to detect lithium anomalies above covered pegmatite targets which will then be drill-tested.”

Metals Australia Limited (ASX: MLS) “MLS” or “the Company”) is pleased to announce that the Company has commenced an aggressive exploration program over a key Andover ‘look-alike’ target at its large Warrambie project (exploration licence E47/4327), located just 10km east of the Azure Minerals Ltd (ASX:AZS) Andover lithium project in Western Australia’s highly prospective northwest Pilbara region (see Figures 1 and 2).

The key target zone identified for lithium-bearing pegmatites on the 126km² Warrambie project is associated with a series of northeast trending structures interpreted from magnetic imagery, which intersect a complex of mafic intrusive rocks. This is a near identical setting to the Andover lithium pegmatite clustre – which is associated with a 5km wide, northeast trending, structural corridor in mafic intrusive rocks (see Figure 1 showing the Andover pegmatites and the Warrambie target).

The Warrambie lithium target lies in an area of shallow soil/alluvial cover. To detect soil covered lithium-bearing pegmatites the Company is utilising a range of geophysical methods, which include:

- i) Detailed magnetics to detect magnetic lows associated with fault structures which may host lithium bearing pegmatites.
- ii) Detailed gravity surveys to detect low-density pegmatite dykes which have intruded the higher density mafic intrusives.
- iii) Passive seismic to detect covered palaeo-ridges associated with the hard and resistant pegmatite dykes.

The detailed gravity and passive seismic programs are well underway and will build on a previous gravity survey carried out by the Company², targeting extensions/repeats of the nearby Sherlock Bay nickel sulphide deposit of Sabre Resources Ltd (ASX:SBR)³. These surveys will be completed within the next two weeks and the results will be imaged and modelled to define covered lithium-bearing pegmatite targets.

Warrambie is soil covered, however covered pegmatites will represent palaeo-ridges which occur close to the surface. Detailed soil sampling will be carried out over defined targets derived from the geophysical programs to locate lithium and other pathfinder element anomalies over potentially spodumene-bearing pegmatite targets.

Key targets identified will be tested with aircore drilling to identify lithium-bearing pegmatites similar to the Andover lithium discovery.

ABOUT METALS AUSTRALIA

Metals Australia Ltd is an active exploration and mining development company with a high-quality portfolio of battery minerals and metals projects in the well-established mining provinces of Australia and Canada.

Lac Rainy Graphite Project, Quebec, Canada (100%):

The Company's flagship **Lac Rainy Graphite Project** is located in a major graphite province in Quebec. Lac Rainy hosts a JORC-2012 Mineral Resource of **13.3Mt @ 11.5%** graphitic carbon (Cg) (including Indicated: **9.6Mt @ 13.1% Cg** and Inferred: **3.7Mt @ 7.3% Cg**)⁴, which is one of the highest grade in the region and has potential for major resource growth through further drilling. Metallurgical test work has generated high-grade flotation concentrate results of up to 97% graphitic carbon (Cg)⁵. A bulk concentrate sample despatched to Germany has produced premium battery grade 99.96% Cg purity spherical graphite⁶. Electrochemical (battery charging and durability) tests have confirmed Lac Rainy battery grade (99.96% Cg) spherical graphite is premium-quality lithium-ion battery anode material with exceptional battery charging capacity and outstanding discharge performance and durability⁷.

The Company recently announced widespread and exceptionally high-grade graphite sampling results⁸ from its Lac Rainy Graphite Project, including **a sample containing over 50% Cg** from a large EM anomaly west of the existing Mineral Resource. The average grade of 80 new samples is over 11% Cg and **the combined strike-length of the identified high-grade graphitic zones is over 36km, which represents 20-times the 1.6km strike-length currently drilled** and trenched which contains the existing Mineral Resource.

Corvette River Lithium Project, Quebec, Canada (100%):

The Company has also identified outstanding lithium potential^{9,10} at its **Corvette River Lithium Project** in the James Bay region of Quebec. These include the 100%-owned East Pontois, Felicie and West Pontois tenements, located within Patriot Battery Metals Inc.'s (ASX:PAT) CV Lithium Trend^{11,12}, and tenements at West and East Eade on the parallel Corvette South Trend. A total of 63 samples from 21 identified outcropping pegmatites have been submitted for analysis. Results are expected within two to three weeks.

Manindi Battery Minerals/Metals Project, Western Australia (80%):

Metals Australia holds an 80% interest in the **Manindi Lithium/Base Metals Project**, located approximately 500km northeast of Perth. Manindi has an existing high-grade zinc with copper resource of **1.08Mt @ 6.52% Zn, 0.26% Cu, 3.19% Ag for 70,102t Zn (2% Zn cut-off)**¹⁵ (including Measured: 37.7kt @ 10.22% Zn, 0.39% Cu, 6.24 g/t Ag; Indicated: 131.5kt @ 7.84% Zn, 0.32% Cu, 4.60 g/t Ag and Inferred: 906.7kt @ 6.17% Zn, 0.25% Cu, 2.86 g/t Ag). The Company has also been drilling and defining the project's high-grade lithium pegmatite potential and has initiated a metallurgical lithium-concentrate program and mineralogical work on bulk samples from recent diamond drilling¹³. The Company has also identified an intrusive-related vanadium-titanium with Ni-Cu-Co sulphides discovery¹⁴.

Warrambie Lithium and Nickel Project, Western Australia (80%):

The **Warrambie Project** is located in the northwest Pilbara region, where an aggressive exploration program is underway to assess the lithium potential. Warrambie is **located only 10km east of the Andover lithium project of Azure Minerals (ASX:AZS) which has produced drilling intersections of up to 209.4m @ 1.42% Li₂O**¹.

Other Projects:

The Company's **Tennant Creek Cu-Au Project** in the Northern Territory (NT) includes granted EL32725, directly along strike to the east of the Warrego copper-gold deposit (production 6.75Mt @ 1.9% Cu, 6.6 g/t Au¹⁶) and three EL applications both north and south of Tennant Creek along strike from high-grade Cu-Au deposits including the bluebird discovery of Tennant minerals Ltd (ASX:TMS)¹⁷.

The Company has completed a detailed gravity survey in the area of shallow cover directly east of the Warrego Cu-Au deposit in EL 32725. Processing, modelling and interpretation of the gravity survey data is nearing completion.

Drilling will be planned to test coincident gravity-magnetic targets in fresh rock, below the zone of weathering, targeting high-grade copper-gold discoveries similar to Bluebird and Warrego.

The Company also holds large exploration licences in the **Murchison Gold Project in WA**, including granted exploration licences, E51/2058 and E51/2059 (White Well and Star Well) along strike from the >5Moz Big Bell gold deposit.

Very little previous exploration has been carried out in the White Well and Star Well tenement areas due to extensive soil cover and the lack of recognition of greenstone lithologies and prospective splay structures that are interpreted from magnetics imagery to extend under sediment cover in untested areas and represent targets for the discovery of major gold deposits similar to Big Bell.

The Company will carry out detailed magnetics and gravity surveys to detect covered greenstones intersected by these key gold bearing structures that will be drill tested, targeting significant gold deposits under shallow cover.

REFERENCES

¹ Azure Minerals Ltd (ASX:AZS), 4th August 2023. 209m High-Grade Lithium Intersection at Andover.

² Metals Australia Limited, 7/11/22. EM anomalies – Nickel sulphide targets at Warrambie.

³ Sabre Resources Ltd, 12th June 2018. Resource Estimate Update for the Sherlock Bay Ni-Cu-Co Deposit.

⁴ Metals Australia Ltd, 15 June 2020. Metals Australia delivers High Grade Maiden JORC Resource at Lac Rainy.

⁵ Metals Australia Ltd, 30 June 2020. Metallurgical Testing Confirms Lac Rainy Graphite High Purity and Grade.

⁶ Metals Australia Ltd, 28 February 2023. Battery grade 99.96% Spherical Graphite for Lac Rainy.

⁷ Metals Australia Ltd, 23 May 2023. Outstanding Battery Test Results for Lac Rainy Graphite.

⁸ Metals Australia Ltd, 16 October 2023. Extensive High-Grade Graphite of More Than 50% at Lac Rainy.

⁹ Patriot Battery Metals Inc. (ASX:PMT). 22/11/23. Patriot Makes New Discovery at the Corvette Property as it Intercepts 100m of spodumene-Bearing Pegmatite at CV9, Quebec, Canada.

¹⁰ Patriot Battery Metals Inc. (ASX:PMT). 30/07/23. Patriot Announces the Largest Lithium Pegmatite Resource in the Americas at CV5, Corvette Property, Quebec, Canada.

¹¹ Metals Australia Ltd, 27 July 2023. Expanded Pegmatite Sampling Re-Commencing in the Corvette Area.

¹² Metals Australia Ltd, 02 October 2023. 63 Pegmatite Samples from Corvette River Tenements in Lab.

¹³ Metals Australia Ltd, 19 July 2022. Exceptional Lithium Pegmatite Intersections at Manindi.

¹⁴ Metals Australia Ltd, 29 September 2022. High Grade Titanium-Vanadium-Fe Intersection at Manindi.

¹⁵ Metals Australia Ltd, 10 May 2022. Spectacular 68m Zinc-Copper Drill Hit at Manindi.

¹⁶ Portergeo.com.au/database/mineinfo. Tennant Creek - Gecko, Warrego, White Devil, Nobles Nob, Juno, Peko, Argo

¹⁷ Tennant Minerals (ASX:TMS), 17 August 2022.: 63m @ 2.1% Copper and 4.6 g/t Gold Intersected at Bluebird.

This announcement was authorised for release by the Board of Directors.

*****ENDS*****

For further information, please refer to the Company's website or contact:

Michael Muhling,
Company Secretary
Metals Australia Limited
+61 (08) 9481 7833
info@metalsaustralia.com.au

ASX LISTING RULES COMPLIANCE

In preparing this announcement the Company has relied on the announcements previously made by the Company listed under "References". The Company confirms that it is not aware of any new information or data that materially affects those announcements previously made, or that would materially affect the Company from relying on those announcements for the purpose of this announcement.

CAUTIONARY STATEMENT REGARDING FORWARD-LOOKING INFORMATION

This document contains forward-looking statements concerning Metals Australia Limited. Forward-looking statements are not statements of historical fact and actual events, and results may differ materially from those described in the forward-looking statements as a result of a variety of risks, uncertainties, and other factors. Forward-looking statements are inherently subject to business, economic, competitive, political and social uncertainties and contingencies. Many factors could cause the Company's actual results to differ materially from those expressed or implied in any forward-looking information provided by the Company, or on behalf of, the Company. Such factors include, among other things, risks relating to additional funding requirements, metal prices, exploration, development and operating risks, competition, production risks, regulatory restrictions, including environmental regulation and liability and potential title disputes.

Forward looking statements in this document are based on the company's beliefs, opinions and estimates of Metals Australia Limited as of the dates the forward-looking statements are made, and no obligation is assumed to update forward looking statements if these beliefs, opinions and estimates should change or to reflect other future developments.

COMPETENT PERSON STATEMENT

The information in this report that relates to exploration results, Mineral Resources and Exploration Targets has been reviewed, compiled and fairly represented by Mr Jonathon Dugdale. Mr Dugdale is a Technical Advisor to Metals Australia Ltd and a Fellow of the Australian Institute of Mining and Metallurgy ('FAusIMM'). Mr Dugdale has sufficient experience, including over 35 years' experience in exploration, resource evaluation, mine geology and finance, relevant to the style of mineralisation and type of deposits under consideration to qualify as a Competent Person as defined in the 2012 Edition of the Joint Ore Reserves Committee ('JORC') Australasian Code for Reporting of Exploration Results, Minerals Resources and Ore Reserves. Mr Dugdale consents to the inclusion in this report of the matters based on this information in the form and context in which it appears.