

ASX ANNOUNCEMENT

8 December 2023

SPATIAL PLANNING APPLICATION SUBMITTED

South Harz Potash Limited (ASX:SHP) (**South Harz** or the **Company**) is pleased to announce that its wholly owned subsidiary, Südharz Kali GmbH, has achieved an important milestone and submitted the comprehensive Spatial Planning Application (**Application**) for its flagship Ohmgebirge Potash Development to the responsible regulatory authority, Thüringer Landesverwaltungsamt (**TLVwA**).

The Application documentation was prepared in conjunction with international environmental and permitting consultancy, ERM, and includes an explanatory report, an environmental impact study, a preliminary species protection assessment and a spatial impact assessment document. It is based on a brownfield development of Ohmgebirge which includes utilisation of the neighbouring Bernterode shaft infrastructure owned by NDH-E/DEUSA International GmbH (refer SHP ASX release dated 2 November 2023, *MOU Executed For Existing Shaft and Infrastructure Utilisation*).

Under the German Spatial Planning Act, the TLVwA now has a regulated period of six (6) months to consider and decide on the Application. During this time, the Application documentation will be made available to the public (expected to occur from January 2024) and further consultation facilitated.

As previously announced, a successful initial consultation meeting for South Harz's Ohmgebirge Spatial Planning impact assessment was held during September 2023 (refer SHP ASX release dated 21 September 2023, *Ohmgebirge Permitting Process On Track*). No significant concerns or objections to the proposed development of Ohmgebirge were raised through that initial hearing process.

The Spatial Planning procedure is a fundamental step in the approval process for all infrastructure and industrial projects in Germany which occupy more than 10 hectares surface area. It involves assessing the impact of a project on the landscape, environment, economy, and broader social aspects. The process is designed to ensure the balancing of interests between the project proponent and all local stakeholders.

Following targeted receipt of Spatial Planning approval in mid-2024, and post completion of the Ohmgebirge environmental baseline studies (expected Q1 CY 2024), South Harz is set to proceed with submission of a General Operating Permit application for build approval. The overall permitting process for Ohmgebirge is being led by highly experienced South Harz Regional Director, Dr Babette Winter.

South Harz Managing Director and CEO, Luis da Silva, stated, *"The German permitting process is streamlined and offers the benefit of one leading authority regulating each project development approval. This approach delivers a high degree of predictability in respect of the overall process and provides us with a strong degree of confidence with respect to the timely securement of these approvals."*

South Harz Regional Director, Babette Winter, commented, *"The submission of the Spatial Planning Application documentation is a significant day for South Harz and the Ohmgebirge Development. Our consultation with local stakeholders has been consistent, purposeful and constructive. It has also demonstrated the strong community support for development of Ohmgebirge and our commitment to world-class environmental and social practices."*

REGISTERED OFFICE

Unit 13,
6-10 Douro Place
West Perth WA 6005

CONTACT DETAILS

W: southharzpotash.com
E: info@southharzpotash.com
P: +61 (0) 408 447 493

ABN: 64 153 414 852**ASX Code:** SHP**Frankfurt Code:** A2DWXX**724.9 M** Ordinary Shares**113.5 M** Unlisted Options

This ASX release has been approved by Managing Director, Luis da Silva.

Investor and media enquiries

Luis da Silva

Managing Director and CEO
South Harz Potash Ltd
info@southharzpotash.com

Michael Vaughan

Fivemark Partners
+61 422 602 720
michael.vaughan@fivemark.com.au

REGISTERED OFFICE

Unit 13,
6-10 Douro Place
West Perth WA 6005

CONTACT DETAILS

W: southharzpotash.com
E: info@southharzpotash.com
P: +61 (0) 408 447 493

ABN: 64 153 414 852

ASX Code: SHP

Frankfurt Code: A2DWXX

724.9 M Ordinary Shares

113.5 M Unlisted Options

About South Harz

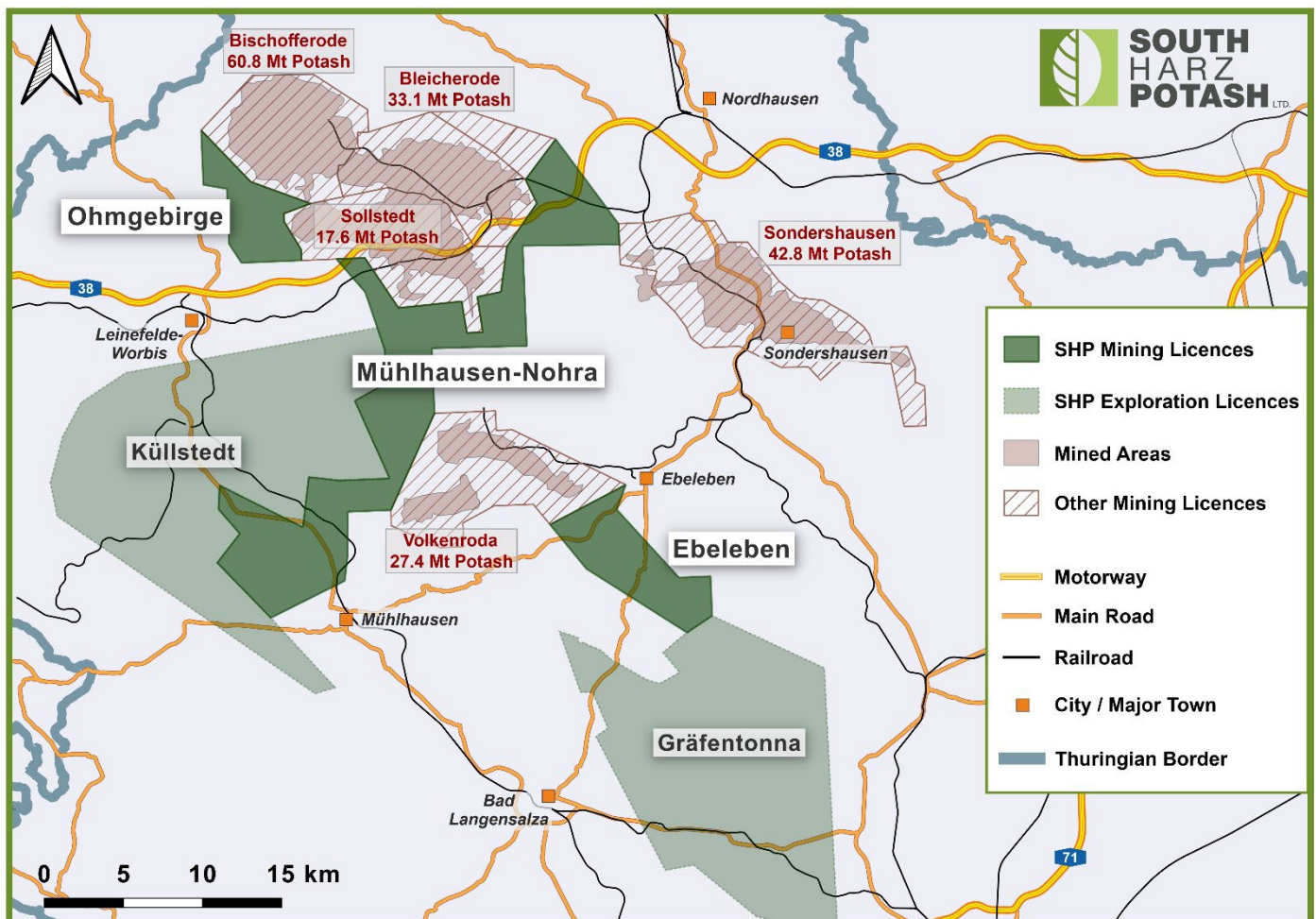
South Harz Potash (ASX: SHP) (**South Harz**) is a potash exploration and development company with its flagship project located in the South Harz Potash District region of Germany, midway between Frankfurt and Berlin.

The South Harz Project hosts a globally large-scale potash JORC (2012) Mineral Resource estimate of 5 billion tonnes at 10.6% K₂O of Inferred resources and 258 million tonnes at 13.5% K₂O of Indicated Resources across four wholly-owned project areas located favourably within central Europe.¹ This comprises three perpetual potash mining licences, Ohmgebirge, Ebeleben and Mühlhausen-Nohra, and two potash exploration licences, Küllstedt and Gräfentonna, covering a total area of approximately 659km.

With strong established infrastructure proximate to the key European market, the South Harz Project is well positioned to enable rapid economic development across multiple deposits.

South Harz Potash: Growing a responsible potash business in the heart of Germany

www.southharzpotash.com



1. Refer to South Harz ASX release dated 12 July 2022 for full Mineral Resource estimate details. In accordance with ASX Listing Rule 5.23, the Company is not aware of any new information or data that materially affects the information included in this release, and the Company confirms that, to the best of its knowledge, all material assumptions and technical parameters underpinning the estimates in these releases continue to apply and have not materially changed.