

Significant Expansion of Andover South Tenement Position

Highlights

- RGL significantly increases its tenement position south of the Azure Minerals Ltd Andover lithium discovery and Raiden Resources' Andover South lithium discovery.
- Tenement position grown to 470km² around Andover with the addition of the 207km² E47/5086, located immediately south of RGL's new Andover South Tenement E47/5072¹.

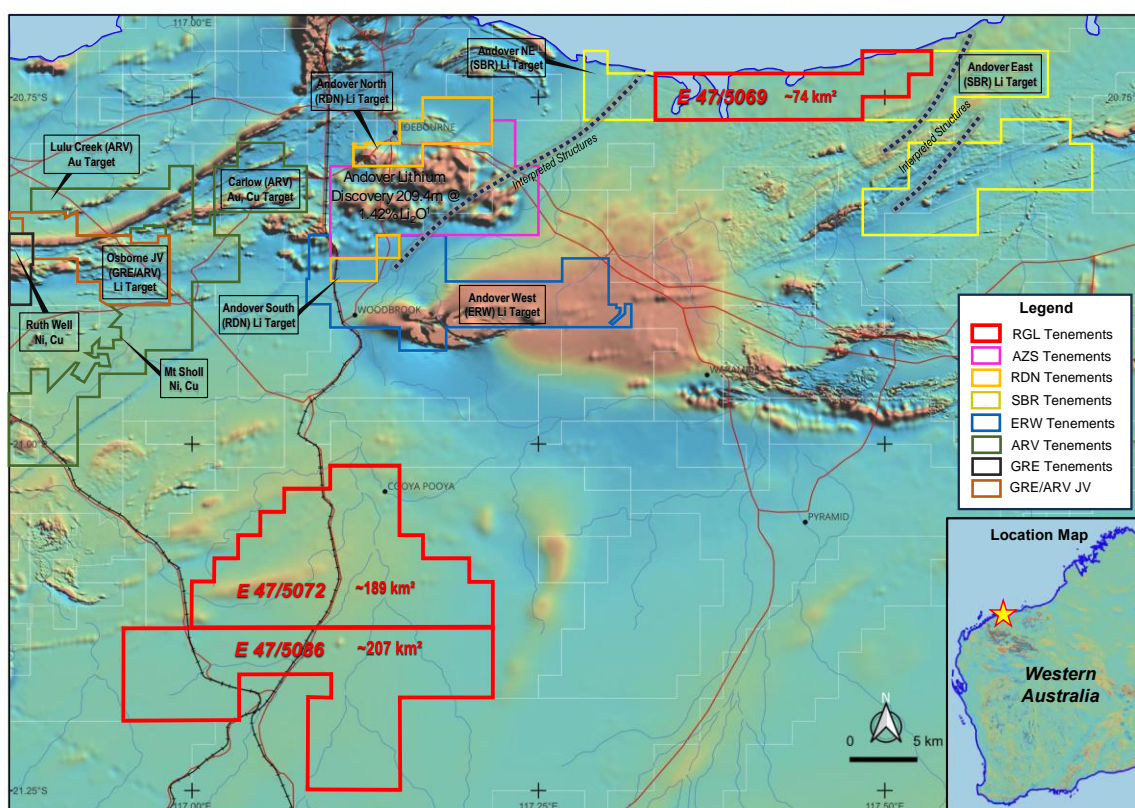


Figure 1 – Location of RGL's tenements with respect to Azure's Andover lithium discovery east of Karratha

Riversgold Limited (ASX: RGL, Riversgold or the Company) is pleased to announce the Company has added a further 207km² (E47/5086) via direct application to the recently announced 189km² tenement (E47/5072), which is 16.5km south of Azure Minerals Ltd's (ASX: AZS) Andover lithium discovery² and 14.5km south of Raiden Resources Limited's Andover South lithium target³ (Figure 1).

Riversgold Chairman, David Lenigas, commented: "RGL has very quickly build up a very large tenement position around Azure and Raiden's lithium discoveries near Karratha. We like the prospectivity of all of this land position for lithium, gold and nickel and have already commenced detailed exploration here."

¹ Riversgold Limited (ASX: RGL), 5 December 2023 - Big Increase in Andover Lithium Area Tenement Holding

² Azure Minerals Ltd (ASX: AZS), 4 August 2023 - 209m High-Grade Lithium Intersection at Andover.

³ Raiden Resources Limited (ASX: RDN), 9 November 2023 - Exceptional Lithium Results & Additional Spodumene XRD Confirmation at Andover South Project

This announcement has been authorised for release by the Board of Riversgold.

For further information, please contact

Julian Ford

Chief Executive Officer

P: (08) 6143 6747

E: jford@riversgold.com.au

Ed Mead

Technical Director

P: 0407 445 351

E: ed@meadcorporate.com

David Lenigas

Executive Chairman

P: +44 (0) 7881825378

E: dlenigas@riversgold.com.au

About Riversgold

Riversgold Ltd is an ASX-listed exploration company with a lithium-focused strategy in the world-renowned Pilbara and Yilgarn cratons in Western Australia. In 2022, the Company acquired a suite of four lithium-prospective exploration tenement applications covering 164km² in the Pilbara region. The key Tambourah Project is underexplored and has the potential to host a major lithium- system much like the nearby Pilgangoora and Wodgina deposits.