

21 December 2023

## DRILLING COMPLETED AT ROBERTS HILL

- Aircore drilling programme completed
- Drilled 174 holes totalling 13,475 metres
- Assay results due to be announced late January 2024

Mantle Minerals Limited (**ASX:MTL**) (“the Company”) is pleased to announce the drill program at Roberts Hill is now complete. Drilling commenced on the 27 October 2023 and the Company successfully completed 174 holes for a total of 13,475 meters at an average hole depth of about 78m. Assays are expected late January 2024.

The program established that overlying sediments, which would conceal any potential mineralisation, were about 30m downhole. This means that the drilling program tested an average 48m of basement rock. The Company is testing for Hemi-style mineralisation in the basement rock.

In addition, the Company plans to start reverse circulation drilling to drill below and follow up on any significant intersections from the air core drilling programme at Roberts Hill, around the start of Q2 2024.



*Figure 1. Aircore Drill Rig During the Recently Completed Drill Program*

Geophysical data from the Roberts Hill area, and surrounding tenements, suggests that the stratigraphy of Robert’s Hill area may be trending north-south and could connect with the stratigraphy that hosts the Hemi gold deposit. The current aircore drilling programme has tested this hypothesis, as well as other possible structures related to Hemi-style gold mineralisation.

The Company developed the exploration model and current drilling program from an in-depth review of the geological, geochemical and geophysical data from Roberts Hill, Mt Berghaus and their surrounding areas over the first half of 2023.

### Pardoo Nickel

The Company previously advised a resource estimate at the Pardoo Nickel Project would be published by the end of the calendar year. As the Company has prioritised its resources towards Roberts Hill and 2024 drilling at Mt Berghaus, the resource estimate will now be published in Q1 2024.

### Background

The Hemi deposit lies at the heart of De Grey’s 10.6M Oz gold mineralisation system immediately to the south of Mantle’s Roberts Hill tenements. Mantle is exploring for extensions of this system at Roberts Hill.

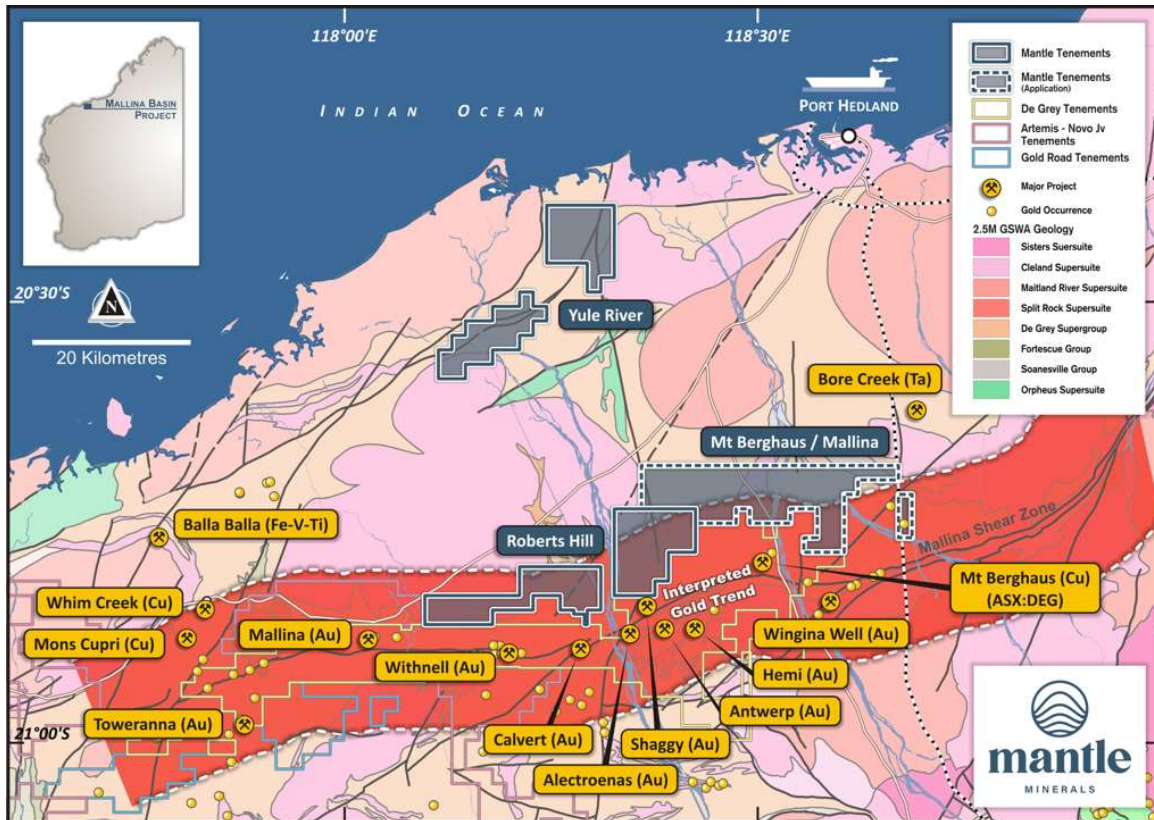


Figure 2. Project Location Map and Proximity to Hemi and the Interpreted Gold Trend



The Roberts Hill project is located within an interpreted gold trend extending from Whim Creek and Toweranna gold mines eastwards through Hemi and potentially beyond. The area is easily accessed by a 45 minutes' drive southwest of Port Hedland along the Great Northern Highway (Figure 2).

This announcement has been authorised for release by the Mantle Minerals Limited Board of Directors.

**For Further Information, please contact:**

**Nick Poll**

Executive Chairman  
+61 6102 2656

**Johnathon Busing**

Non-Executive Director/Company Secretary  
+61 8 6165 8858

**Competent Person Statement**

The information contained in this report to exploration results relates to information previously announced by the Company and the Company is not aware of any new information which materially affects the information included in those announcements. The information was compiled or reviewed by Mr Nick Poll. Mr Poll is the Company's Executive Chairman. Mr Poll has sufficient experience of relevance to the styles of mineralization and the types of deposits under investigation, and to the activities undertaken to qualify as a Competent Person as defined in the 2012 edition of the Joint Ore Reserve Committee (JORC) "Australasian Code for Reporting of Exploration Results, Mineral Resources and Ore Reserves".

**Forward-Looking Statement Disclaimer**

This announcement contains forward-looking statements that involve a number of risks and uncertainties. These forward-looking statements are expressed in good faith and believed to have a reasonable basis. These statements reflect current expectations, intentions, or strategies regarding the future and assumptions based on currently available information. Should one or more of the risks or uncertainties materialize, or should underlying assumptions prove incorrect, actual results may vary from the expectations, intentions, and strategies described in this announcement. No obligation is assumed to update forward-looking statements if these beliefs, opinions, and estimates should change or to reflect other future development