

emyria

(ASX:EMD)

New treatments
for improving Australia's mental health

January 2024

Company Overview & Strategic Update



DISCLAIMER to presentation

This presentation has been prepared by Emyria Limited ACN 625 085 734 (Company or Emyria). This presentation is not a financial product or investment advice or recommendation, offer or invitation by any person or to any person to sell or purchase securities in Emyria in any jurisdiction. This presentation contains general information only and does not consider the investment objectives, financial situation and needs of individual investors. Investors should make their own independent assessment of the information in this presentation and obtain their own independent advice from a qualified financial adviser having regard to their personal objectives, financial situation and needs before taking any action. No representation or warranty, express or implied, is made as to the accuracy, completeness, reliability or adequacy of any statements, estimates, opinions or other information, or the reasonableness of any assumption or other statement, contained in this presentation. Nor is any representation or warranty (express or implied) given as to the accuracy, completeness, likelihood of achievement or reasonableness of any forecasts, prospective statements or returns contained in this presentation. Such forecasts, prospective statements or returns are by their nature subject to significant uncertainties and contingencies, many of which are outside the control of Emyria. To the maximum extent permitted by law, Emyria and its related bodies corporate, directors, officers, employees, advisers and agents disclaim all liability and responsibility (including without limitation any liability arising from fault or negligence) for any direct or indirect loss or damage which may arise or be suffered through use or reliance on anything contained in, or omitted from, this presentation. An investment in Emyria securities should be considered speculative and is subject to investment and other known and unknown risks, some of which are beyond the control of Emyria. Emyria does not guarantee any rate of return or the absolute or relative investment performance of Emyria securities. The distribution of this presentation including in jurisdictions outside Australia, may be restricted by law. Any person who receives this presentation must seek advice on and observe any such restrictions.

This release may contain certain forward-looking statements with respect to matters including but not limited to the financial condition, results of operations and business of Emyria and certain of the plans and objectives of Emyria with respect to these items. These forward-looking statements are not historical facts but rather are based on Emyria's current expectations, estimates and projections about the industry in which Emyria operates, and its beliefs and assumptions. Words such as "anticipates," "expects," "intends," "plans," "believes," "seeks," "estimates"; "guidance" and similar expressions are intended to identify forward looking statements and should be considered an at-risk statement. Such statements are subject to certain risks and uncertainties, particularly those risks or uncertainties inherent in the process of developing technology and in the endeavour of building a business around such products and services. These statements are not guarantees of future performance and are subject to known and unknown risks, uncertainties and other factors, some of which are beyond the control of Emyria, are difficult to predict and could cause actual results to differ materially from those expressed or forecasted in the forward looking statements. Emyria cautions shareholders and prospective shareholders not to place undue reliance on these forward-looking statements, which reflect the view of Emyria only as of the date of this release. The forward-looking statements made in this announcement relate only to events as of the date on which the statements are made. Emyria will not undertake any obligation to release publicly any revisions or updates to these forward-looking statements to reflect events, circumstances or unanticipated events occurring after the date of this announcement except as required by law or by any appropriate regulatory authority.

All medicines carry risks and specialist prescribers, such as registered psychiatrists, are best placed to assess the suitability of a new medication against a patient's individual circumstances and medical history before proceeding. Adverse effects of MDMA include high blood pressure, increased pulse rate, faintness, and panic attacks, and in some rare cases it can cause loss of consciousness or trigger seizures. Other side effects include involuntary jaw clenching, decreased appetite, restless legs, nausea, headache, sweating and muscle/joint stiffness. These effects are unlikely at low doses in the treatment regimens used in psychedelic-assisted psychotherapy while appropriately managed in a controlled environment with direct medical supervision.



Greg Hutchinson
Non-Executive Chairman



With approved Authorised Prescribers, Emyria is advancing from *trials* to *treatment* which we believe is a world-first for a community-based service.

emyria (ASX:EMD) STRATEGIC OVERVIEW

The only ASX-listed entity integrating direct care delivery with drug development

MENTAL HEALTH FOCUS

We provide new treatments for large unmet mental health challenges, starting with PTSD

DRUG-ASSISTED THERAPIES

We are the first, community-based private clinic to commence MDMA-assisted therapy trials under TGA guidelines

IMMEDIATE PATIENT IMPACT & REVENUES

We are currently generating approximately \$1M in clinical billings per quarter fueling our growth and drug development initiatives

STRONG IP & NOVEL PRODUCTS

Data captured through our clinics creates intellectual property and supports our drug development programs

WORLD-CLASS TEAM & PARTNERS

Valued partners like the NIH & the University of Western Australia support our research ambitions

EMYRIA | CORPORATE OVERVIEW

Strategic investment from leading life science institutional investors

ASX: EMD TRADING INFORMATION

Share Price **A\$0.059**¹

6-Month low / high A\$0.05 / 0.14

Shares Outstanding 349,226,509

Market Capitalisation **A\$21.6M**

Debt (30 Sep 2023) *Nil*

SUBSTANTIAL SHAREHOLDERS

Shareholder **%**

Tenmile 6.8%

Top 20 56.3%



1

LEADERSHIP IN **MENTAL
HEALTH** - *AN AREA THAT
DESPERATELY NEEDS NEW
SOLUTIONS*



DEMAND FOR MENTAL HEALTH SERVICES IS HIGH

Prevalence of mental ill health in Australia ¹

- Over **2 in 5** experience a mental health disorder at some time in their life
- **1 in 5** have had a mental health disorder in the past 12 months
- **15%** of adults reported experiencing “high” to “very high” mental distress in the past 12 months



**Black Dog
Institute**

BUT, SUPPLY OF MENTAL HEALTH SERVICES IS STRUGGLING

More than **1 million** Australians are unable to access the care they need due to workforce shortages of trained mental health professionals ¹

Notably, **1 in 3** psychologists have closed books ²



**Black Dog
Institute**

EMYRIA *DELIVERS & DEVELOPS* NEW TREATMENTS TO IMPROVE MENTAL HEALTH

Emyria's 3-step strategy:



DELIVER INNOVATIVE CARE:

Our clinics offer care programs that comply with current regulatory standards, including treatments involving drugs that have undergone recent rescheduling

20,000 patients cared for to date ¹



CREATE REVENUE GROWTH:

We apply strong commercial discipline to ensure healthy and sustainable service revenues

\$1m / qtr from clinical services and growing each year ²



SCALE NATIONALLY, THEN INTERNATIONALLY:

We leverage our **revenues** to support capacity growth;
We use our **data** to support innovation and IP creation

30 treatments / month target first yr

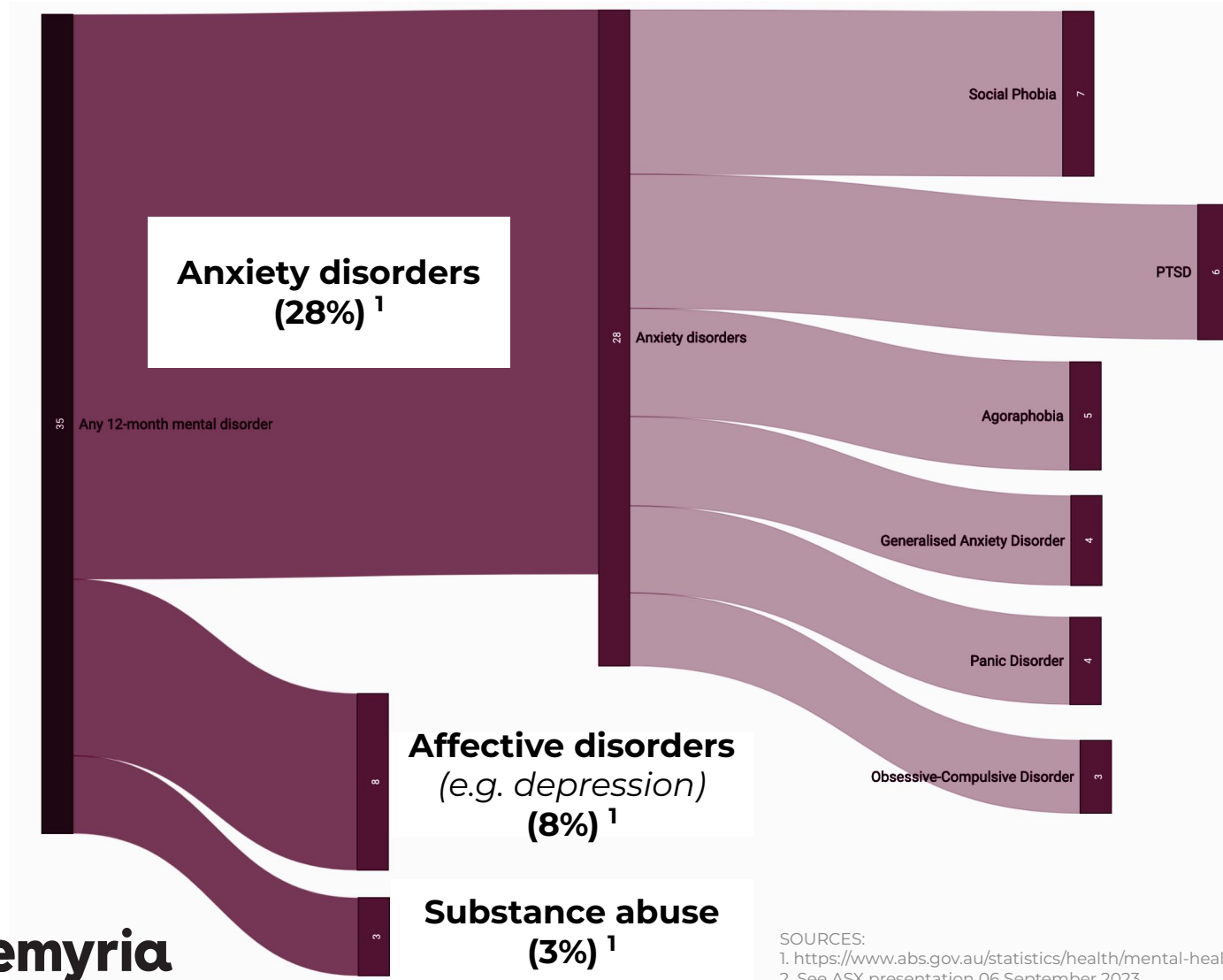
2

WE ARE EVALUATING
DRUG-ASSISTED
THERAPIES FOR **PTSD**



WHY POST-TRAUMATIC STRESS DISORDER ('PTSD')?

PTSD is a large unmet need and we are experts in caring for psychological trauma



➔ PTSD (6%)¹

Market for MDMA-AT for PTSD²

Total Addressable Market (TAM)
~1,000,000 (much greater globally)



Serviceable Addressable Market (SAM)
~800,000 Eligible for MDMA-AT
~22% have some clinical exclusion



Early Target Market
~6,000 patients
10% of patients suitable for MDMA-AT in Western Australia:

SOURCES:

1. <https://www.abs.gov.au/statistics/health/mental-health/national-study-mental-health-and-wellbeing/latest-release#key-statistics>

2. See ASX presentation 06 September 2023

WHY MDMA-ASSISTED THERAPY ('MDMA-AT') FOR PTSD?

1	PTSD IS PREVALENT & NEEDS NEW TREATMENTS	PTSD affects 6% of all Australians (~1M people) ¹ 60% more prevalent in first-responders ² 50% of patients develop treatment resistance ³
2	MDMA-AT SHOWS PROMISE IN CLINICAL TRIALS - RISKS ASSOCIATED WITH THE USE OF MDMA ARE SET OUT IN SLIDE 2	After 3 treatments, 70% of participants no longer met criteria for PTSD (<i>compared to ~48% in placebo group</i>). Results replicated across two, Phase 3 trials ^{4,5}
3	MDMA-AT IS COST EFFECTIVE	us\$132.9 million expected to be saved over 30 years per 1,000 treatments ⁶
4	EMYRIA KNOWS HOW TO DELIVER INNOVATIVE SERVICES	We've cared for 20,000+ and our team is experienced in providing services compliant with regulatory standards and have managed treatments involving rescheduled drugs
5	EMYRIA HAS A BUSINESS MODEL FOR GROWTH	\$1m / quarter current clinical billings, and growing, supports clinic expansion and novel drug development ⁷

SOURCES:

1. <https://www.phoenixaustralia.org/news/ptsd-awareness-day-2022/>
2. Bryant RA. The nature of PTSD in treatment-seeking first responders. Eur J Psychotraumatol. 2022 Jan 26;13(1):2011602.
3. Committee on the Assessment of Ongoing Efforts in the Treatment of Posttraumatic Stress Disorder; Board on the Health of Select Populations; Institute of Medicine. Washington (DC): National Academies Press (US); 2014 Jun 17.

4. Mitchell, J.M., et al. MDMA-assisted therapy for severe PTSD: Nat Med 27, 1025–1033 (2021)

5. Mitchell, J.M., et al. MDMA-assisted therapy for moderate to severe PTSD: Nat Med (2023). <https://doi.org/10.1038/s41591-023-02565-4>

6. Marseille E., et al. Updated cost-effectiveness of MDMA-assisted therapy for the treatment of posttraumatic stress disorder in the US Findings from a phase 3 trial. PLoS One. 2022 Feb 25;17(2):e0263252. doi: 10.1371/journal.pone.0263252

7. See September Quarter 4C, 2023

MDMA-ASSISTED THERAPY IS ATTRACTING SIGNIFICANT GLOBAL INVESTMENT

THE WALL STREET JOURNAL

World Business U.S. Politics Economy Tech **Finance** Opinion Arts & Culture Lifestyle


Ecstasy-for-Medicine Advocate Raises \$100 Million

Series A funding raises more than \$100 million for MAPS affiliate amid a flurry of deals by competitors

By [Matt Wirz](#) [Follow](#)

Updated Jan. 5, 2024 at 8:54 am ET

[Share](#) [Resize](#) [Listen \(2 min\)](#)



MAPS founder Rick Doblin has been a leader in the psychedelic legalization movement. PHOTO: JOHN LAMPARSKI/GETTY IMAGES

An affiliate of the Multidisciplinary Association for Psychedelic Studies, a nonprofit leader in the [pharmaceutical psychedelics industry](#), has raised more than \$100 million in a Series A private stock sale.

The MAPS Public Benefit Corporation needed the money to fund the final stages of its application for regulatory approval to sell MDMA, also known as Ecstasy, to

Jan 5th, 2024

MAPS raised USD \$100M to pursue the FDA registration and commercialisation of their MDMA product.¹

This creates a massive need for clinical services with the infrastructure and team capable of delivering these treatment in a safe and commercially viable way.

WHAT IS POST-TRAUMATIC STRESS DISORDER ('PTSD')?

A chronic, debilitating mental health disorder that can occur following a traumatic event

Key Stats

- PTSD affects **~6%** of adults (with higher incidence in first responders)¹
- Up to **50%** treatment resistance¹
- **US\$232.2B** annual total cost in USA²

Symptoms

Re-experiencing:

Intrusive memories, flashbacks, and nightmares

Avoidance:

Evading reminders of the trauma and feeling detached

Increased arousal:

Irritability, sleep issues, and easily startled

Mood & cognition:

Persistent negative emotions and distorted blame

Physical symptoms:

Palpitations, sweating, and gastrointestinal issues

Current Treatments



COUNSELLING & PSYCHOTHERAPY



PRESCRIPTION DRUGS



EXPOSURE THERAPY
Re-imagining events in a safe environment



GROUP THERAPY

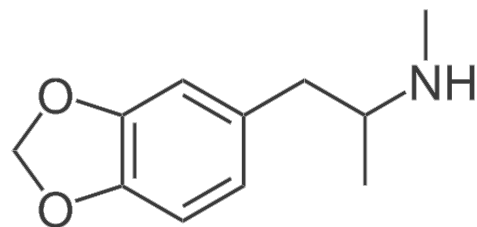
WHAT IS MDMA-ASSISTED THERAPY (MDMA-AT)?

Patients undergo psychotherapy sessions while under the influence of MDMA to enhance the therapeutic process

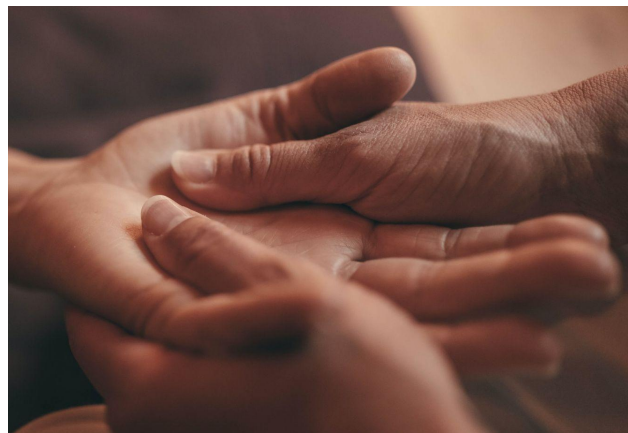
MDMA



PSYCHOTHERAPY



MDMA (3,4-methylenedioxyamphetamine or "ecstasy")



MDMA produces feelings of emotional connection, openness and fear extinction

Supportive intensive, trauma-informed psychotherapy is believed to be crucial to therapeutic benefit

Proposed Benefits with Skilled Therapy

MDMA-AT is thought to assist patients to access traumatic memories with reduced distress.

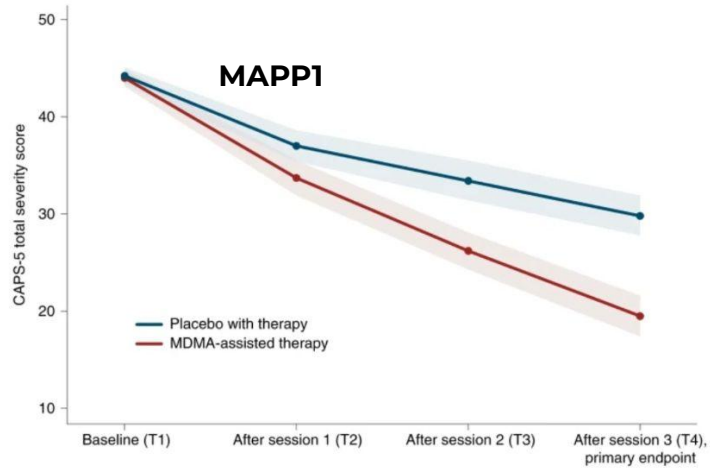
Improved feelings of trust and wellbeing while under the influence of medication can support communication and strengthen the therapeutic alliance between patient and therapist.

Risks & Exclusions

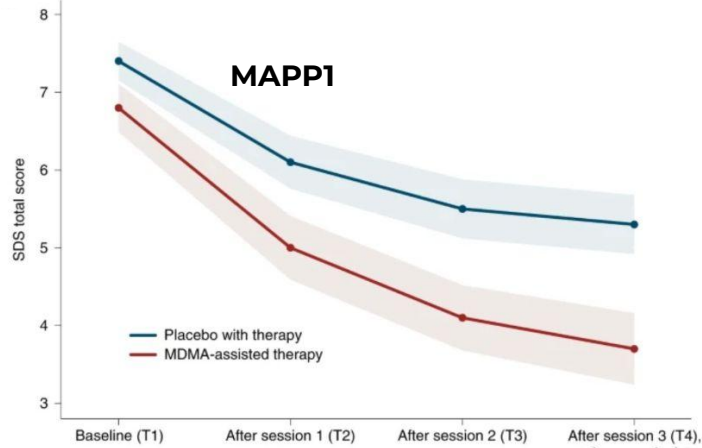
Patients with cardiovascular or psychotic disease are generally excluded. Main side effects can include anxiety, restlessness, fatigue, jaw-clenching, headache and transient increases in blood pressure and / or heart rate - all of which are closely monitored.¹

MDMA-AT SHOWING PROMISE FOR PTSD | TWO PHASE 3 TRIALS COMPLETED^{1,2} (MAPP1 & MAPP2)

Improves symptoms

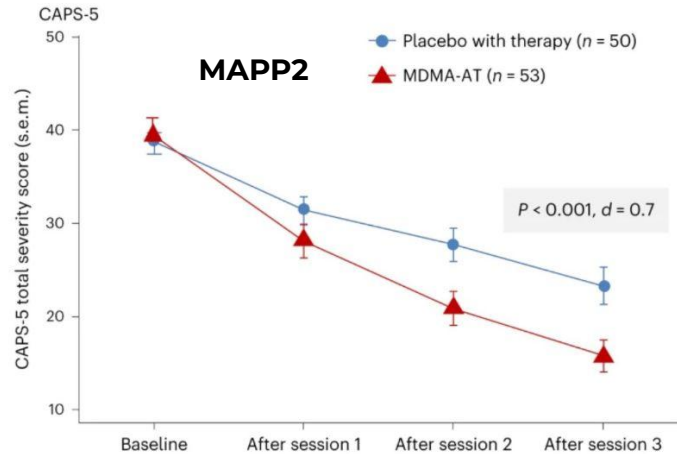


Improves function

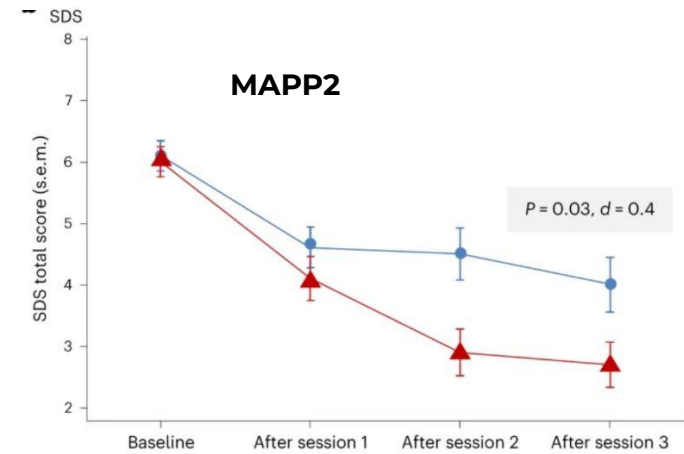


Key benefits after 3 treatment sessions

86.5% of MDMA-AT participants reported improvement, compared to 69% in placebo group.



MDMA-AT significantly reduced PTSD symptoms, as shown by the change in CAPS-5 total severity score from baseline to 18 weeks after baseline



MDMA-AT significantly improved quality of life, as shown by the change in Sheehan Disability Scale score from baseline to 18 weeks after baseline

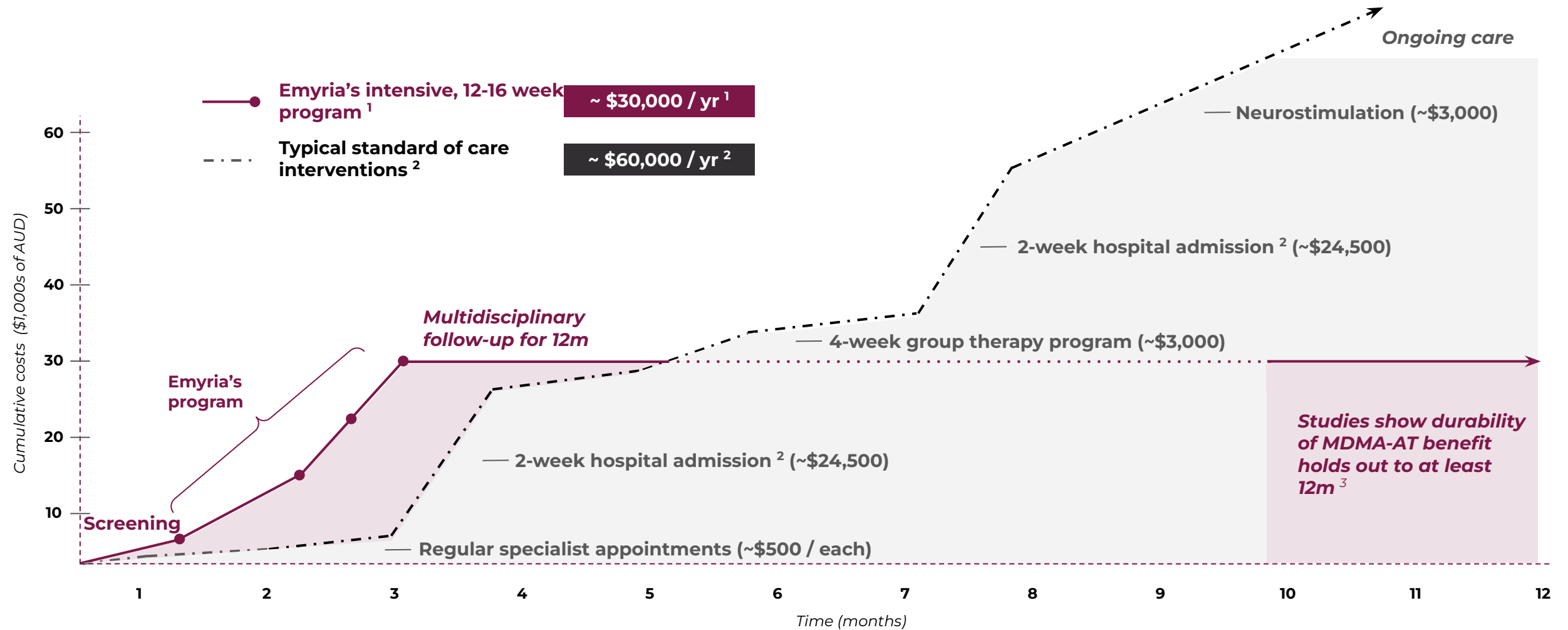
71.2% of MDMA-AT participants no longer met PTSD criteria, compared to 47.6% in the placebo group.

Risks associated with MDMA-AT are set out in Slide 2.

Further enhancements reported in various life areas, including familial, social, and professional aspects.

MDMA-AT COSTS¹ vs STANDARD OF CARE^{2,3}

If Phase 3 clinical trial remission rates can be achieved in real world settings, MDMA-AT is cost effective for PTSD



Sources:

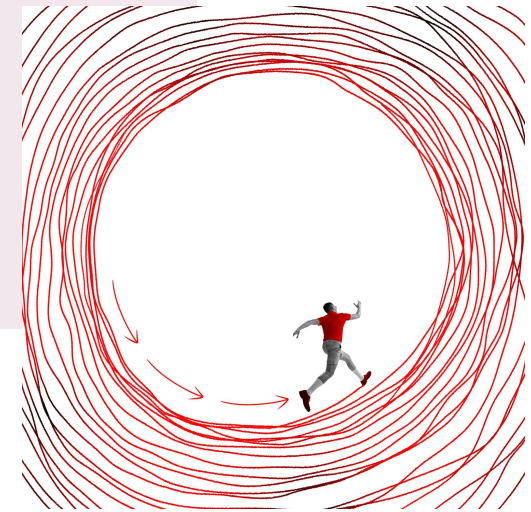
1. Costs are estimated based on estimates of direct clinician time required to delivery program

2. Standard of care costs based on conversations with clinical specialists. WA East Metropolitan Health Service reported Specialised Mental Health Care Days average cost of \$2,156 per day in FY 2022 / 2023 (<https://annualreport.emhs.health.wa.gov.au/key-performance-indicators/browse-kpis/average-cost-per-bed-day-in-specialised-mental-health-inpatient-services/>)

3. Marseille E, et al. The cost-effectiveness of MDMA-assisted psychotherapy for the treatment of chronic, treatment-resistant PTSD. PLoS One. 2020 Oct 14;15(10):e0239997. doi: 10.1371/journal.pone.0239997. PMID: 33052965; PMCID: PMC7556534.

3

DELIVERING IMMEDIATE **PATIENT IMPACT**



EMYRIA HAS MADE SIGNIFICANT PROGRESS IN THE LAST 24 MONTHS

While providing care to thousands of patients, we have developed and refined our treatment environment & care models

Dedicated facilities

multiple, fit-for-purpose consulting rooms¹

20+ clinicians trained

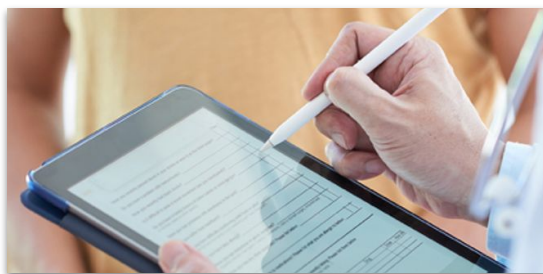
and ready to support psychedelic-assisted therapy¹

Robust data capture

systems³ - to generate insights that help improve care delivery and guide innovation

Approved Authorised

Prescribers working with a range of clinicians to provide multidisciplinary care before, during and after treatment⁴



Key advantages of the Emyria model:

- ✓ Commercially viable clinical services
- ✓ Designed to scale nationally, then globally
- ✓ Compliant with all regulatory requirements
- ✓ Generates robust Real-World Data to support innovation
- ✓ Versatile - team and infrastructure ready to evaluate new interventions
- ✓ Multidisciplinary and comprehensive “wrap-around” mental health care

SOURCES:

1. See ASX release 13 September 2023
2. See ASX release 21 September 2023
3. See ASX release 07 October 2021
4. See ASX release 10 January 2024

WHERE NEXT? LEVERAGE PTSD EXPERTISE TO TACKLE ADDITIONAL MENTAL HEALTH DOMAINS

35% of Australian adults experienced at least 1 mental health challenge in the last 12 months ¹

Start with PTSD



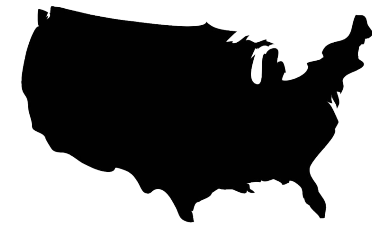
Multidisciplinary clinics providing evidence-based psychological trauma care

Expand to other mental health challenges





Add new services for conditions like treatment-resistant depression

Expand globally








Seek growth opportunities via strategic partnerships

emyria — OUR 12m ROADMAP —————>

#	PROGRAM	MILESTONE 1	MILESTONE 2
1	Launch new service 	 Emyria psychiatrists obtain Authorised Prescriber status	Provide full treatment for first 20 patients
2	Scale service nationally	Commence service in another AU state (via acquisition or licence)	Treat first 20 patients in another AU state
3	Launch second new service for depression	Obtain Authorised Prescriber status for second service	Treat first 5 patients with new service
4	Engage Payers	Secure a major payer partnership	Secure second major Payer
5	Secure intellectual property for MDMA analogues	Receive Clear Search Report from international patent examiner	Secure granted patents in national phase

OUR INDUSTRY PEERS

Innovative, premium clinical services can do well

	COMPANY	SECTOR	VALUATION or (REVENUES)
1	 Oak St. Health	A US health care network of primary care centers for older adults with Medicare	USD\$10.7B (acquired by CVS) ¹
2	 Healthia Your local healthcare leader	An integrated allied healthcare organisation with networks of optometry, podiatry, and physiotherapy clinics	A\$260M (acquired by Pacific Equity Partners) ²
3	 Sonic HealthPlus SONIC CLINICAL SERVICES	Occupational medicine and general practice services	(over A\$200M / year) ³
4	 one medical	A US chain of primary healthcare clinics	USD\$3.9B ⁴ (acquired by Amazon)
5	 cityblock	A US health care network focussed on Medicare and Medicaid	Has raised over USD\$800M ⁵

SOURCES:

- [1. https://www.cvshealth.com/news/company-news/cvs-health-completes-acquisition-of-oak-street-health.html](https://www.cvshealth.com/news/company-news/cvs-health-completes-acquisition-of-oak-street-health.html)
- [2. https://www.afr.com/street-talk/moelis-tapped-for-pep-s-1-80-a-share-bid-for-healthia-20230831-p5e0ux](https://www.afr.com/street-talk/moelis-tapped-for-pep-s-1-80-a-share-bid-for-healthia-20230831-p5e0ux)
- [3. https://investors.sonichealthcare.com/FormBuilder/_Resource/_module/T8Ln_c4ibUqyFnnNe9zNRA/docs/Reports/AR/SHL_Annual_Report_2023.pdf](https://investors.sonichealthcare.com/FormBuilder/_Resource/_module/T8Ln_c4ibUqyFnnNe9zNRA/docs/Reports/AR/SHL_Annual_Report_2023.pdf)
- [4. https://press.aboutamazon.com/2022/7/amazon-and-one-medical-sign-an-agreement-for-amazon-to-acquire-one-medical](https://press.aboutamazon.com/2022/7/amazon-and-one-medical-sign-an-agreement-for-amazon-to-acquire-one-medical)
- [5. https://www.cbinsights.com/company/cityblock-health/financials](https://www.cbinsights.com/company/cityblock-health/financials)

4

OUR **DRUG DEVELOPMENT** & IP PIPELINE



EMYRIA'S PHARMACEUTICAL DEVELOPMENT PIPELINE

Novel chemical entities and unique dose forms

PROGRAM DESCRIPTION	LEAD SERIES	DEVELOPMENT GOAL	STAGE	COMMERCIAL STATUS	CATEGORY LEADER
Novel, MDMA-inspired medicines <i>Developed with the University of Western Australia</i>					
<i>With partner, the University of Western Australia, we have created the world's largest library of novel, patentable, MDMA analogues.</i>	EMD-MX1	Faster-acting MDMA, with improved side-effect profile, for drug-assisted therapies	ACTIVE: Metabolic studies to evaluate half-lives of lead drug candidates.		Kinosis (Preclinical offer \$273M) ¹
<i>We're modifying the MDMA molecule to change its affects such as its selectivity for one or more of the three major neurotransmitters, it's onset of action and its side effect profile.</i>	EMD-MX2	Adjunct for Parkinson's disease to improve the side effects of a common treatment	ACTIVE: Release assays with the NIH for lead series to help identify most potent drug candidates for animal studies.		Levodopa (\$8B /yr) ²
<i>Our MDMA analogues are small, brain penetrating molecules with a range of potential applications.</i>	EMD-MX3	Other neurological indications	ACTIVE: Binding receptor screening with Eurofins to select candidates for further preclinical assays.		
Ultra-Pure CBD capsules <i>Highly bioavailable CBD</i>					
<i>Synthetically-derived Ultra-Pure cannabidiol in proprietary formulations to improve bioavailability.</i>	EMD-RX7/9	Prescription medicines for complex pain & anxiety	ACTIVE: FULLY FUNDED PRECLINICAL PROGRAM paid for by the NIH ³ currently preparing for rat PK studies ahead of Phase 1 & Pre-IND		Epidiolex (\$1B/yr) ⁴
	EMD-RX5	Pharmacy treatment for mild anxiety & stress	Phase 3 clinical trials partially completed ⁵	Partnered with ASPEN PHARMACARE AUSTRALIA ⁶	N/A

SOURCES:

- [1. https://www.sydney.edu.au/news-opinion/news/2023/05/05/sydney-spinout-kinosis-273m-develop-drugs-psychiatric-disorders.html](https://www.sydney.edu.au/news-opinion/news/2023/05/05/sydney-spinout-kinosis-273m-develop-drugs-psychiatric-disorders.html)
- [2. https://www.gminsights.com/pressrelease/parkinsons-disease-therapeutics-market](https://www.gminsights.com/pressrelease/parkinsons-disease-therapeutics-market)
- See ASX release 28 Nov 2022
- [4. https://investor.jazzpharma.com/news-releases/news-release-details/jazz-pharmaceuticals-announces-full-year-and-fourth-quarter-2022](https://investor.jazzpharma.com/news-releases/news-release-details/jazz-pharmaceuticals-announces-full-year-and-fourth-quarter-2022)
- See ASX release 06 September 2023
- See ASX release 04 April 2023

EMYRIA'S GROWING PATENT PORTFOLIO

Emyria's unique intellectual property ('IP') is guided by clinical data we collect and covers: **new chemical entities, dosage forms, methods of treatment and software**



	TITLE	OFFICIAL NO.	STATUS
	MDMA Analogues	2021903836	PCT filed
	Cannabidiol Dosing Regime	2021902001	PCT filed
	Cannabinoid Dosage Form	2022900479	PCT filed
	Use of Cannabidiol for the Treatment of Psychological Distress	2020904152	PCT filed
	Use Of Cannabidiol for the Treatment of Psychological Distress	2021901086	Provisional filed
	Use Of Cannabidiol for the Treatment of Irritable Bowel Syndrome Symptoms	2021901672	Provisional filed
	Use Of Cannabinoid Combination for the Treatment of Irritable Bowel Syndrome Symptoms	2021901674	Provisional filed
<i>Others in development covering unique delivery platforms, dose responses and clinical indications</i>		<i>Additional provisionals expected</i>	

5

EMYRIA'S **WORLD-CLASS TEAM**
& PARTNERS

WORLD-CLASS BOARD AND MANAGEMENT TEAM

Founded and scaled innovative clinical services; commercialised novel drug treatments



Greg Hutchinson
Non-Executive Chairman

- **Health Service Expansion:** Spearheads growth and innovation as CEO Sonic HealthPlus and through 5D Clinics; leads 40+ clinics
- **Strategic Vision:** Influential in Australia's health sector, aligning with mission to expand and innovate mental health treatment services



Prof Sir John Tooke
Non-Executive Director

- **Clinical Leadership:** Former President of the Academy of Medical Sciences, recognised for innovative clinical service design and policy
- **Global Health Payer Expertise:** Influential roles at BUPA and past advisor to Google DeepMind



Dr Karen Smith
Non-Executive Director

- **Biopharma Authority:** 100+ clinical trials and 20+ regulatory approvals
- **Strategic Growth:** Former Chief Medical Officer and Global Head of R&D at Jazz Pharma; drove growth through acquisitions & partnerships



Dr Mohit Kaushal
Non-Executive Director

- **Health IT Strategist:** Key role in Oak Street Health's \$10.6B acquisition by CVS Health; experienced driving growth in tech-centric organisations
- **Health Policy Expert:** Served in Obama administration's Health IT task force; Adjunct Professor at Stanford



Dr Michael Winlo
Managing Director

- **Clinical Data Expertise:** Ex-Palantir healthcare lead, merging Medical Doctor and Stanford MBA credentials to drive health innovation
- **Startup Scaling:** Utilising digital technology, frontline medical experience and business network to drive growth



EMYRIA'S GLOBAL CLINICAL ADVISORS

Experts in mental health, psychedelic-assisted therapies, neuroscience and drug development



Dr Jon Laugharne
MBBS, FRCP (UK), FRANZCP

Consultant psychiatrist and specialist in treatment of psychological trauma. Trained psychedelic therapist and MDMA-assisted therapy researcher



Claire Kullak
BSc (Nursing)

Trauma-informed mental health nurse, psychotherapist and nationally recognised EMDR trainer. Trained in psychedelic-assisted therapy and MDMA researcher



Dr Ben Sessa
MBBS(MD), MRCPsych

Specialist psychiatrist and psychedelic and cannabis researcher. Has led studies on LSD, psilocybin, and MDMA over 15 years, significantly advancing psychedelic-assisted therapy and mental health treatment



Dr Jenny Morgan
MBBS, FRANZCA

Consultant pain specialist with 25 years of experience managing complex chronic pain conditions



Dr David Gunn
MBBS, FRACGP

Cannabinoid expert with special interest in the management of substance abuse & mental health treatment



Prof Matt Piggott
BSc, PhD (Chemistry)

Professor and specialist in amphetamine chemistry and novel drug design



Dr Jeremy Tannenbaum
BSc, MBBS (Hons), FRANZCP

Dual specialist in Pain Medicine and Psychiatry. Researched psychedelics at Imperial College, London



Prof Mat-Martin Iverson
Professor, BSc Alta., PhD Br.Col.

Neuropharmacologist and oxytocin expert

CONTACT INFORMATION

Michael Winlo	mwinlo@emyria.com
Investors	investors@emyria.com
Media	media@emyria.com
General	info@emyria.com

INVESTOR HUB:

<https://investorhub.emyria.com/>

